

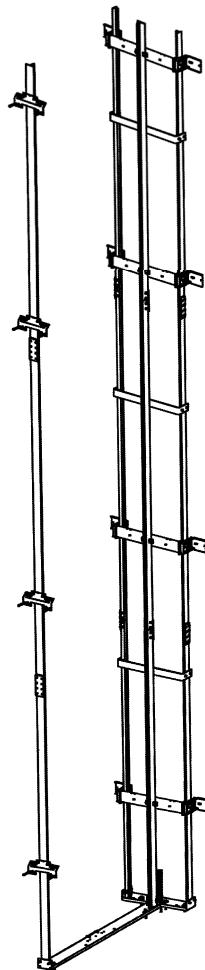
**Gen2[®] L,
Gen2[®] Underslung
Hoistway Material**

Spare Parts Leaflet

03-AAA29508C

March 12, 2014 / Page 1 of 13

W/O VINTAGE



OTIS

This document does not contain any
technical data subject to EAR or ITAR

**SERVICE ENGINEERING
Otis Elevator Company
Bloomfield, Connecticut USA**

Unpublished Work—© Otis Elevator Co.; 2014

Leaflet Description

This leaflet provides spare parts information for hoistway material used with the Gen2® limited duty elevator and Gen2 underslung systems.

Leaflet Revisions

Date Revised	Subject Matter Expert	Reason for Revision
July 30, 2009	Gary Mendrala	New SPL
April 7, 2010	Gary Mendrala	Added new p. 11
March 12, 2014	Gary Mendrala	Added Gen2 Underslung information

Related Drawings

Drawing No.	Title	Drawing No.	Title
AAA29508C	Hoistway Material Gen2L	AAA6108CL	Car and Counterweight Channel Rail Footing
AAA320GL	Spring Buffer	AAA22940AV	Anti-Snag Guard for Car and Counterweight Brackets
AAA26AFB	Car Rail Bracket	AAA26ZX	Rail Fasteners and Bracket Mounting Hardware
AAA6108CL	Car and Counterweight Channel Rail Footing	AAA318KF	Rail Fastenings for CWT Intermediate Tie Brackets

Related Documents

Document ID	Title	Document ID	Title
SPL C-3033	Sliding Guides and Lubricators	SPL 03-AAA320GM	Gen2 L Counterweight Spring Buffer
SPL 03-AAA320GL	Spring Buffer Gen2 L	SPL 03-AAA6136BE	Oil Buffer
SPL 03-AAA29508A	Gen2 Hoistway Material		

Subject Matter Expert

Name	Department
Gary Mendrala	OSC Service Engineering

About Spare Parts Leaflets...

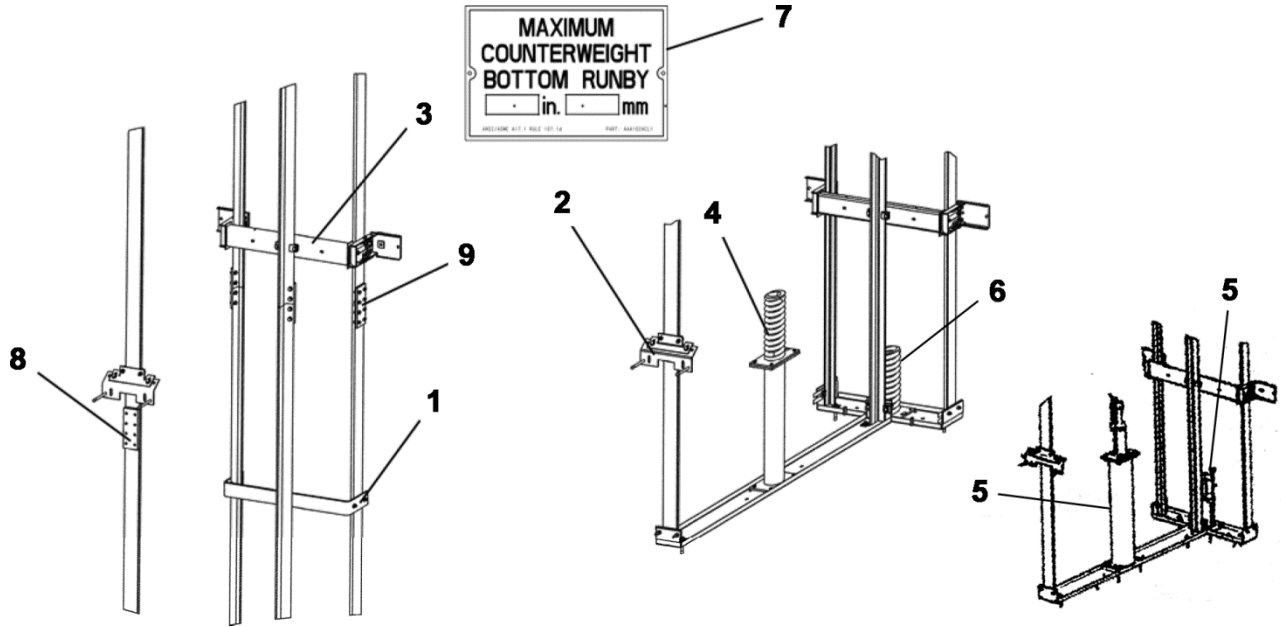
This document lists the lowest replaceable units (LRUs) for the standard version of the product. The LRUs are chosen by a team of Otis associates representing engineering and manufacturing.



While goal of this document is to make parts identification as easy as possible, the document cannot be all-inclusive. Elevator and escalator contracts classified as "special" or "custom" are not addressed here. For such contracts, please refer to specified information, the contract folder, TIPs, Field Education Articles, Construction Letters, etc. for further information.

If you have any suggestions about this document, please contact the subject matter expert listed on this page.

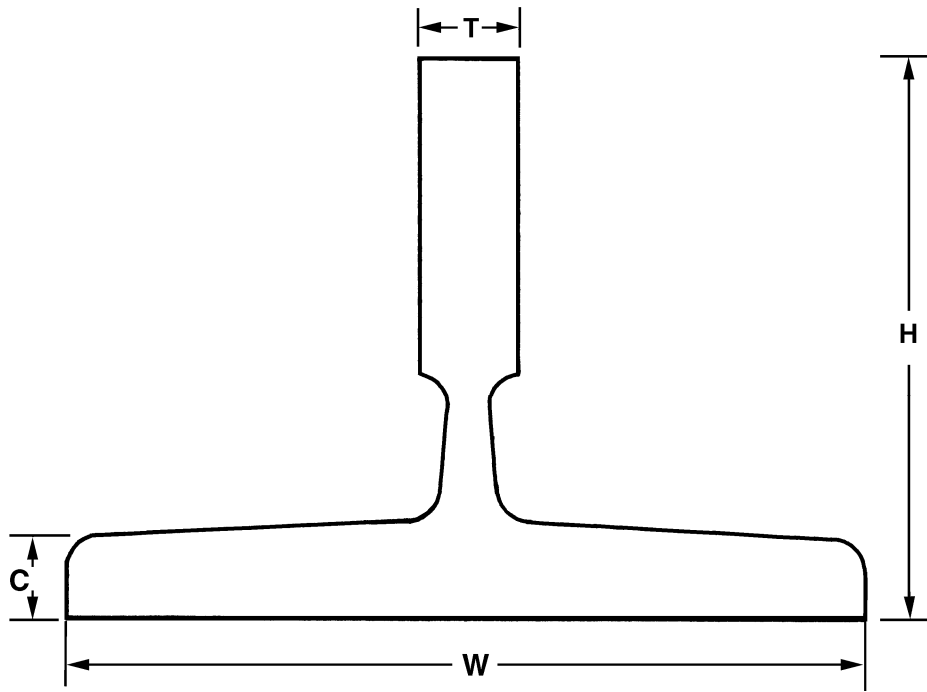
Hoistway Material

03-AAA29508C



W/O VINTAGE		
REF. No.	PART No.	DESCRIPTION
1	AAA318KF5	Assembly, Tie Bracket, Duty = 2100/2500 lb., CWT Rail = #2
	AAA318KF6	Assembly, Tie Bracket, Duty = 3000/3500 lb., CWT Rail = #2
	AAA318KF7	Assembly, Tie Bracket, Duty = 2100/2500 lb., CWT Rail = #1-1/2
	AAA318KF8	Assembly, Tie Bracket, Duty = 3000/3500 lb., CWT Rail = #1-1/2
	AAA318KF9	Assembly, Tie Bracket, Duty = 2100/2500 lb., CWT Rail = #1, 1-1/2
	AAA318KF10	Assembly, Tie Bracket, Duty = 3000/3500 lb., CWT Rail = #1, 1-1/2
2	---	Bracket and Attachment, Car Rail, Type AAA26AFB (special order per drawing AAA26AFB)
3	---	Bracket and Attachment, Car and CWT Combination Rail, Type AAA26AFA, (special order per drawing AAA26AFA)
4	---	Buffer, Car Spring, Type AAA320GL (see SPL 03-AAA320GL)
5	---	Buffer, Oil Car, Counterweight,  SPL 03-AAA6136BE
6	---	Buffer, Counterweight Spring, Type AAA320GM,  SPL 03-AAA320GM
7	AAA102ACL1	Plate, Data (CWT run by)
8	AAA386LKQ43	Plate, Fish (for car guide rail), Non-Seismic, Rail Size = #1, 1.5
	AAA386LYC2	Plate, Fish (for car guide rail), Zones 2-4, Rail Size = #1, 1.5
	AAA386LYC3	Plate, Fish (for car guide rail), Zones Title 24, Rail Size = #1
9	AAA386LKQ19	Plate, Fish (for CWT guide rail), Non-Seismic, Rail Size = #2
	AAA386LKQ20	Plate, Fish (for CWT guide rail), Non-Seismic, Rail Size = #1.5
	AAA386LKQ14	Plate, Fish (for CWT guide rail), Zones 2-4, Rail Size = #1.5

**Cross-Reference for Rail
Designation and Size**

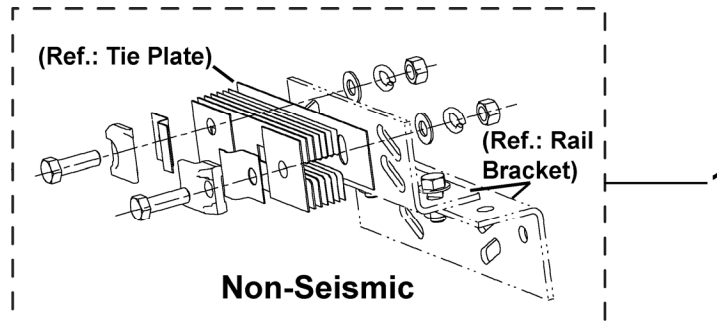


Rail Designation		Weight (lb./ft.)	Thickness (in.)	C (in.)	Height (in.)	Width (in.)
#2	T89	8.0	5/8	5/16	2-7/16	3-1/2
#1-1/2	T127-1	12.0	5/8	5/16	3-1/2	5
#1	T127-2	15.0	5/8	1/2	3-1/2	5
#3/4	T140-1	18.5	3/4	---	---	5-1/2
#1/2	T140-2	22.5	1-1/8	---	---	5-1/2
OA	---	30.0	1-1/4	---	---	5-1/2

Car & CWT Rail Clip Kits

—Non-Seismic Zone

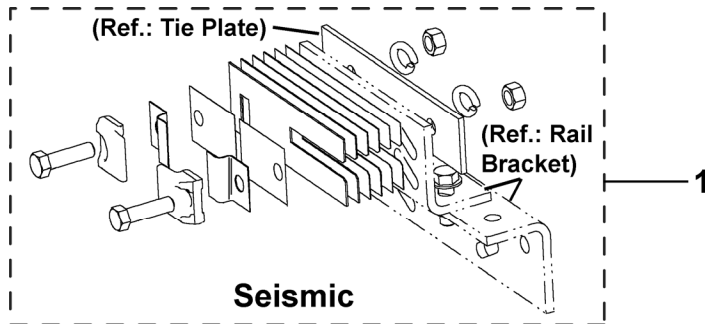
03-AAA29508C



REF. No.	W/O VINTAGE	Rail Fastener Kit (excluding rail brackets)			Zone	Tie Plate
	PART No.	Clip Style	Rail Size Designator			
			Otis	ISO		
1	AAA26ZX1	Steel Sliding	2	T89	Non-Seismic	with
	AAA26ZX2	Forged Non-Sliding	2	T89		
	AAA26ZX3	Forged Sliding	1-1/2	T127-1		
	AAA26ZX4	Forged Non-Sliding	1-1/2	T127-1		
	AAA26ZX5	Forged Sliding	1	T127-2		
	AAA26ZX6	Forged Non-Sliding	1	T127-2		
	AAA26ZX7	Forged Sliding	3/4	T140-1		
	AAA26ZX8	Forged Non-Sliding	1/2	T140-2		
	AAA26ZX9		OA	---		
	AAA26ZX22	Forged Sliding w/Brass Shim	1-1/2	T127-1		
	AAA26ZX23		1	T127-2		
	AAA26ZX24		3/4	T140-1		
	AAA26ZX49	Forged Sliding	1/2	T140-2		
	AAA26ZX55	Forged Sliding	1-1/2	T127-1		
	AAA26ZX56	Forged Sliding	1	T127-2		
	AAA26ZX29	Steel Sliding, w/Button	1	T127-2		
	AAA26ZX30		3/4	T140-1		
	AAA26ZX31		1-1/2	T127-1		
	AAA26ZX32	Steel Sliding	2	T89		
	AAA26ZX33	Forged Sliding	1-1/2	T127-1		
AAA26ZX34	Forged Sliding	1	T127-2			
AAA26ZX41	---	2	T89			
AAA26ZX45	Forged Sliding	1/2	T140-2			
						without

Car & CWT Rail Clip Kits

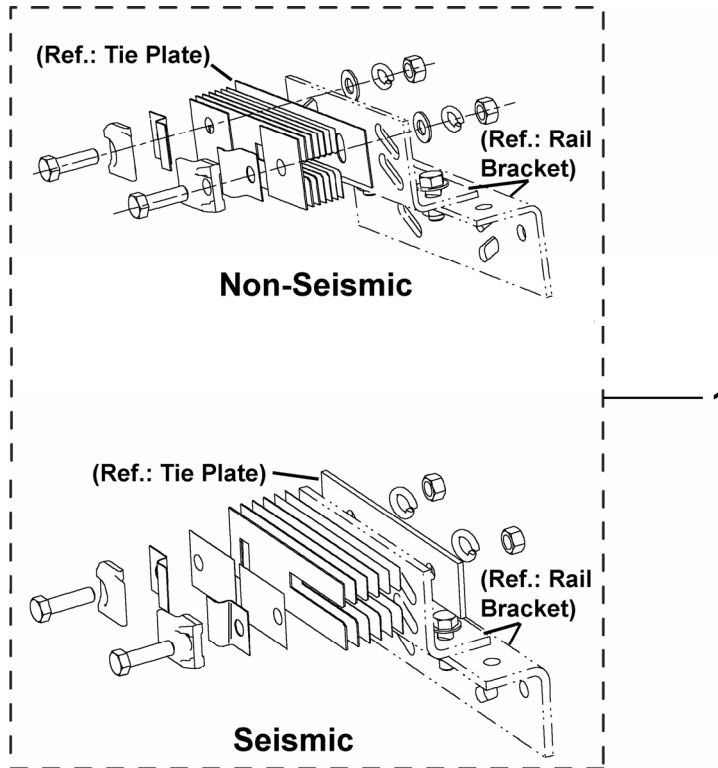
—Seismic



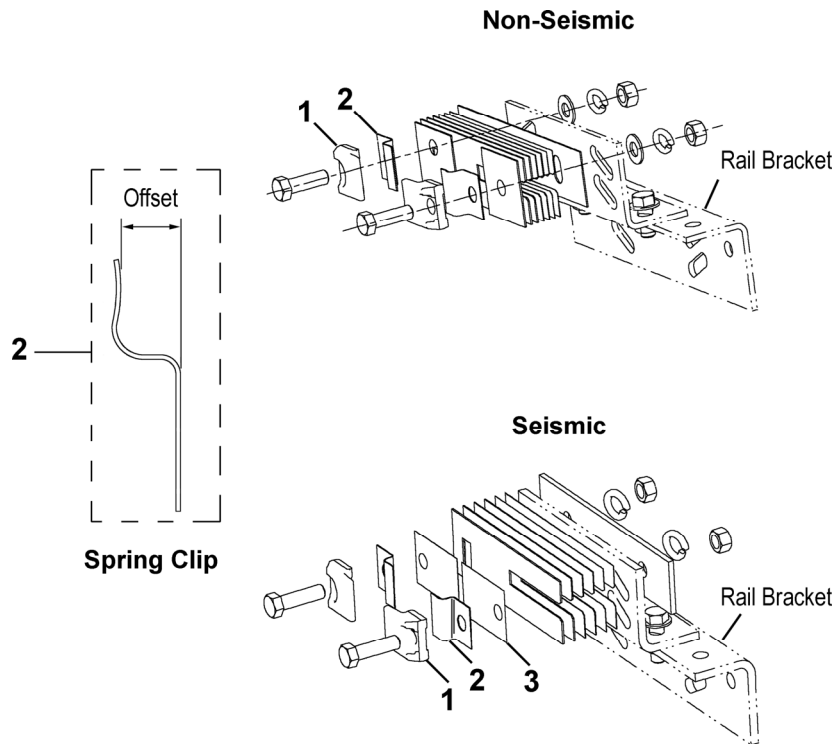
REF. No.	PART No.	Clip Style	W/O VINTAGE		Zone	Tie Plate
			Rail Fastener Kit (excluding rail brackets)			
			Rail Size Designator			
			Otis	ISO		
1	AAA26ZX10 AAA26ZX40 AAA26ZX53	Forged Sliding	1-1/2	T127-1	Seismic	with
	AAA26ZX11	Forged Non-Sliding	1-1/2	T127-1		
	AAA26ZX39 AAA26ZX12 AAA26ZX54	Forged Sliding	1	T127-2		
	AAA26ZX13	Forged Non-Sliding	1	T127-2		
	AAA26ZX14	Forged Sliding	3/4	T140-1		
	AAA26ZX48	Forged Sliding	1/2	T140-2		
	AAA26ZX21	Forged Sliding w/Brass Shim	3/4	T140-1		
	AAA26ZX20		1	T127-2		
	AAA26ZX25		1-1/2	T127-1		
	AAA26ZX26		1-1/2	T127-1		
	AAA26ZX27		1	T127-2		
	AAA26ZX28		3/4	T127-2		
	AAA26ZX15 AAA26ZX35 AAA26ZX37	Forged Sliding	1-1/2	T127-1	without	
	AAA26ZX16 AAA26ZX51	Forged Non-Sliding	1-1/2	T127-1		
	AAA26ZX17 AAA26ZX36 AAA26ZX38	Forged Sliding	1	T127-2		
	AAA26ZX18 AAA26ZX52	Forged Non-Sliding	1	T127-2		
	AAA26ZX46	Forged Sliding	1/2	T140-2		
	AAA26ZX19	Forged Non-Sliding	3/4	T140-1		

Car & CWT Rail Clip Kits— Non-Seismic and Seismic Zones

03-AAA29508C



REF. No.	W/O VINTAGE	Rail Fastener Kit (excluding rail brackets)				
	PART No.	Clip Style	Rail Size Designator		Zone	Tie Plate
			Otis	ISO		
1	AAA26ZX43	Forged Sliding	1-1/2	T127-1	Both	without
	AAA26ZX44	Forged Sliding	1	T127-2		



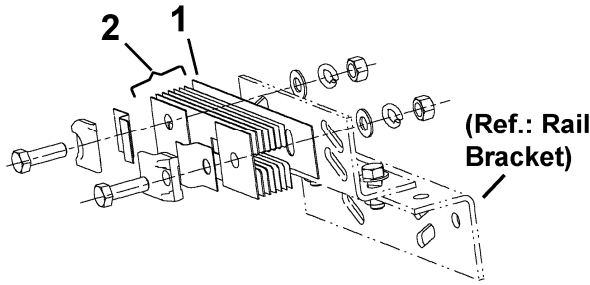
W/O VINTAGE

REF. No.	PART No.	Clip Style	Rail Size Designator		Zone	DESCRIPTION	
			Otis	ISO			
1	339FB1	Steel Sliding	2	T89	Non-Seismic	Clip, Rail	
	339E1	Forged Non-Sliding					
	339LT1	Forged Sliding	1-1/2	T127-1	Seismic & Non-Seismic		
	339GM1	Forged Non-Sliding					
	339MB1	Forged Sliding	1	T127-2			
			3/4	T140-1			
		339D1	Forged Non-Sliding	1	T127-2		Non-Seismic
		339J1		1/2	T140-2		
	339C1		OA	---			
2	93FD1	Forged Sliding	3/4, 1, & 1-1/2	T140-1, T127-2, & T127-1	Seismic & Non-Seismic	Clip, Spring, Offset = 0.37 in.	
	93HB1					Clip, Spring, Offset = 0.55 in.	
3	255EV1					Shim, Rail, Brass, 0.005 in.	

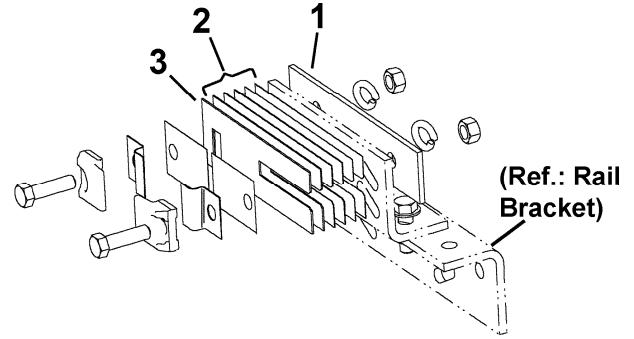
(Continued on next page)

Car & CWT Rail Clips Kits

03-AAA29508C

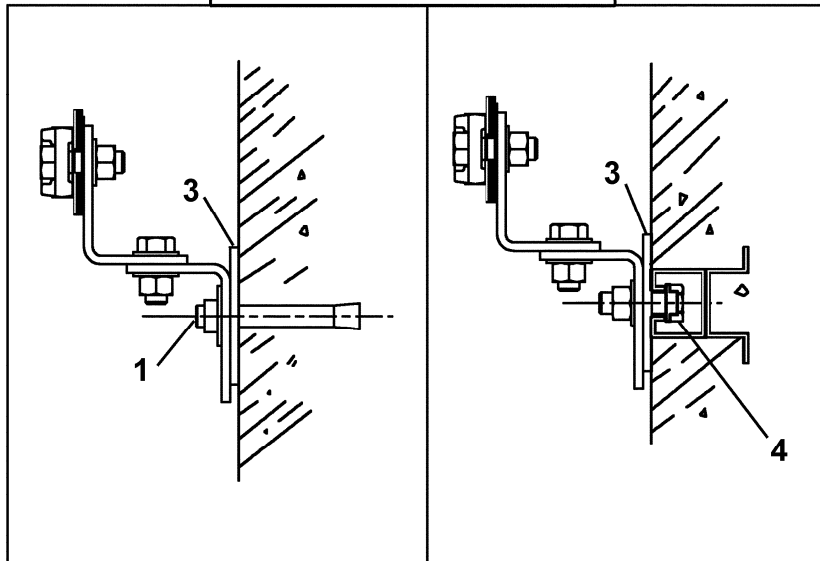
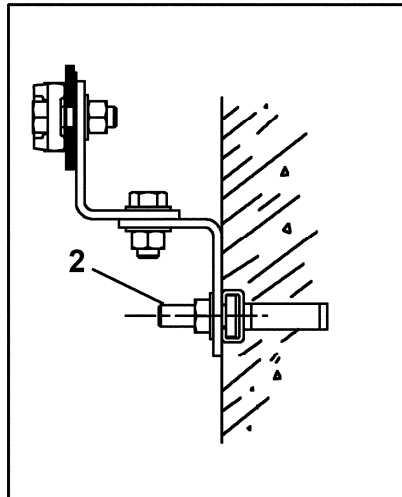


Non-Seismic

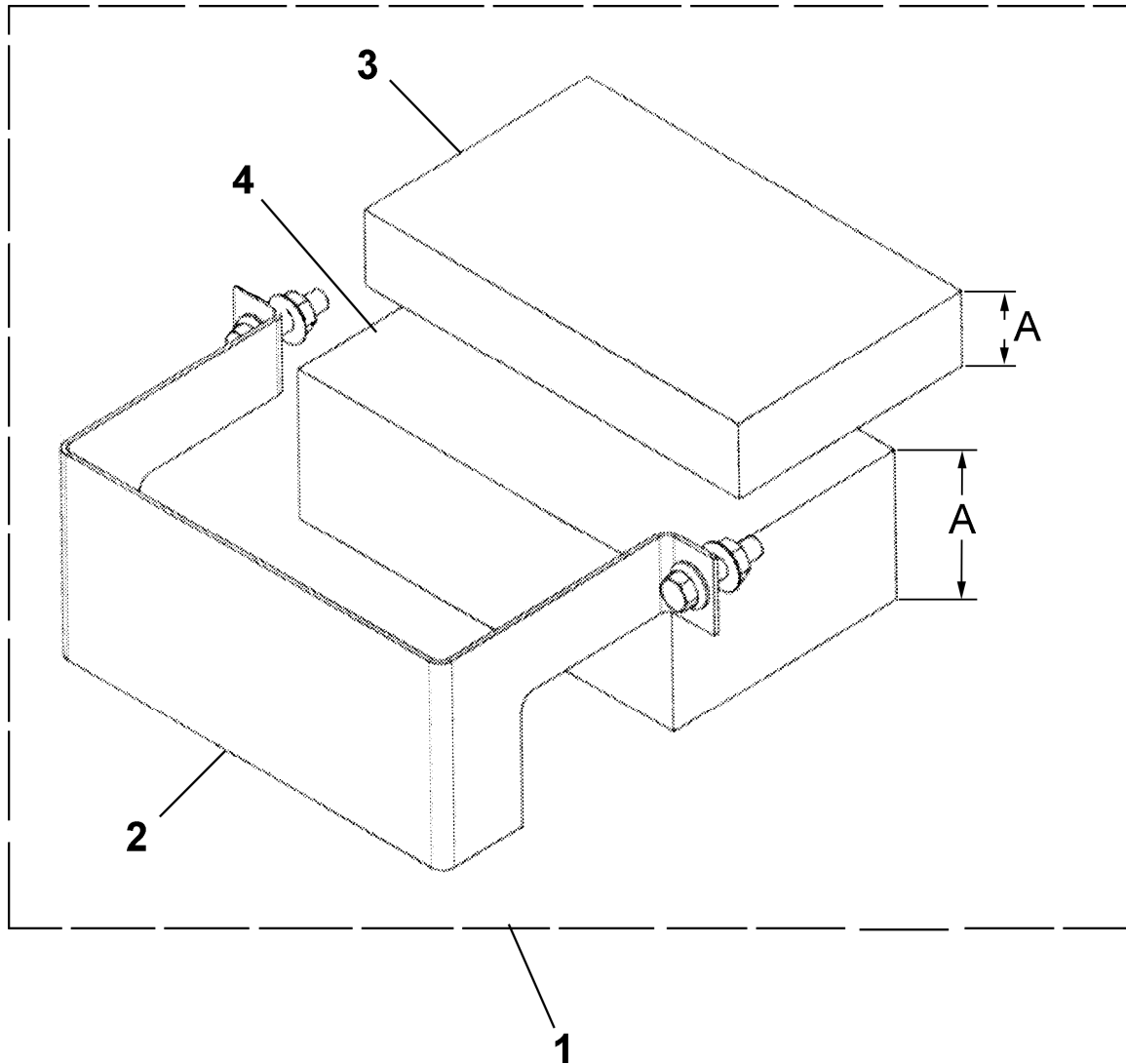


Seismic

REF. No.	PART No.	Clip Style	Rail Size Designator		Zone	DESCRIPTION	
			W/O VINTAGE	Otis			ISO
1	298PM1	Steel Sliding & Forged Non-Sliding		2	T89	Plate, Tie	
	298PM2	Forged Sliding & Forged Non-Sliding		1	T127-2		
				1-1/2	T127-1		
	298PM3	Forged Sliding		3/4	T140-1		
	298PM9	Forged Sliding & Forged Non-Sliding		1	T127-2		
				1-1/2	T127-1		
	298PM10	Forged Sliding		3/4	T140-1		
	298PM15	Forged Non-Sliding		1/2	T140-2		
			OA	---			
298PM16	Steel Sliding with Button		1	T127-2			
			1-1/2	T127-1			
298PM17	Steel Sliding with Button		3/4	T140-1			
2	255EH1	All		3/4	T140-1	Shim, Rail, 0.0336 in.	
	255EH2			1	T127-2	Shim, Rail, 0.0635 in.	
	255EH4			1-1/2	T127-1	Shim, Rail, 0.0187 in.	
				2	T89		
	255J13	Forged Non-Sliding		1/2	T140-2	Shim, Rail, 0.0312 in.	
	255J14			OA	---	Shim, Rail, 0.0625 in.	
	255J20			OA	---	Shim, Rail, 0.015 in.	
3	255EH3	Forged Sliding		3/4	T140-1	Shim, Brass, 0.32 in., Brass	
				1	T127-2		
				1-1/2	T127-1		

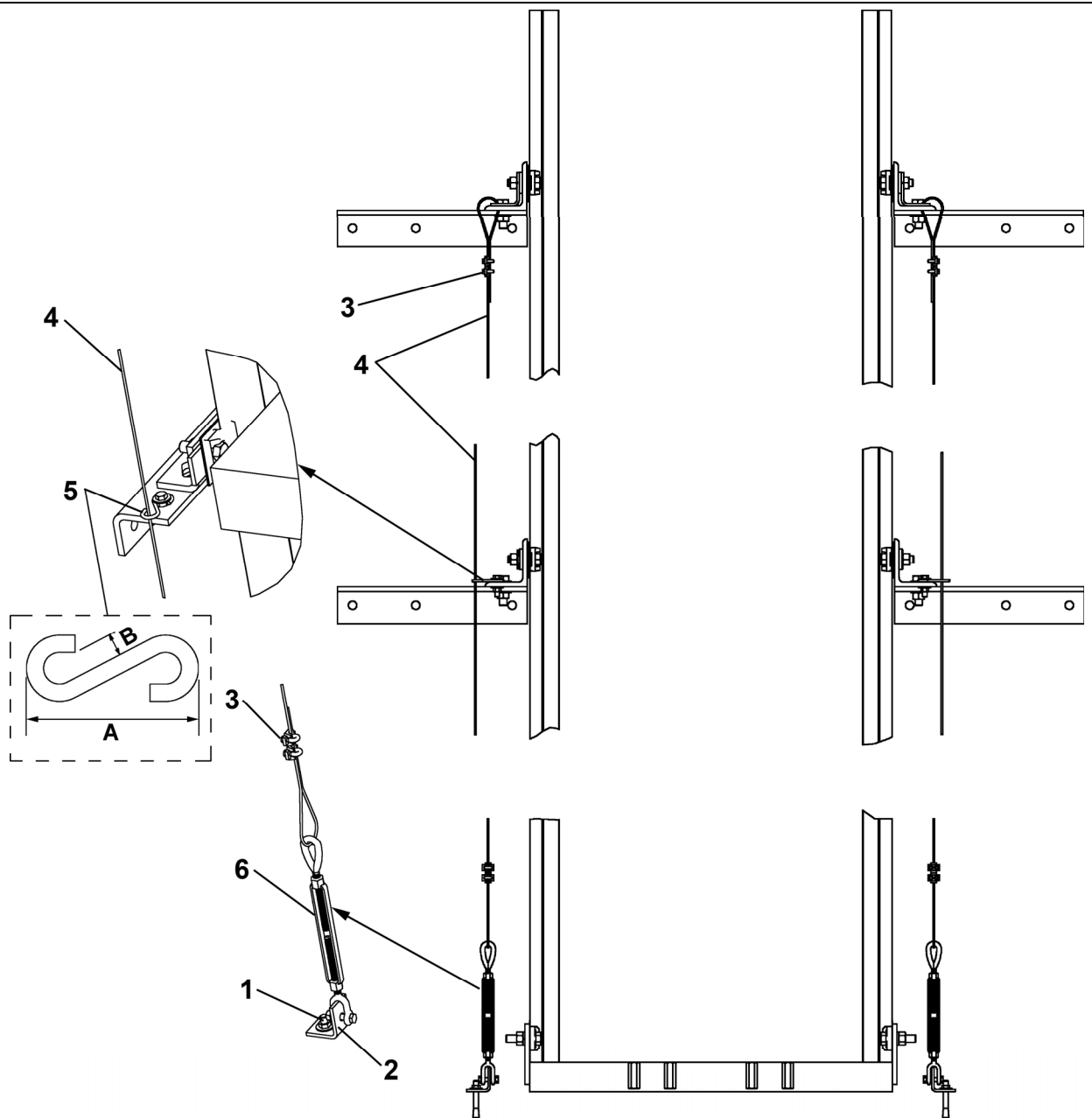


REF. No.	W/O VINTAGE		APPLICATION
	PART No.	DESCRIPTION	
1	54E4	Anchor, Wedge	Concrete Wall 5/8 UNC x 1-1/2 L Thread
	54E20		5/8 UNC x 2-1/2 L Thread
	54E21		Concrete Masonry Unit (CMU) 5/8 UNC Thread
2	AAA65GV1	Bolt, M16 Thread	with Halfen Inserts, Non-Seismic
	AAA65GV2	Bolt, M16 Thread	with Halfen Inserts, Seismic
3	127XA10	Washer, Packing	Concrete, Brick, CMU, Wood Beam
4	AAA130BH1	Washer, Insert	Steel Inserts (in brick or concrete)



W/O VINTAGE		
REF. No.	PART No.	DESCRIPTION
1	AAA22940BC1	Assembly, G2L Rail Shim Kit (set of four)
2	AAA339QB1	Clip, w/Fasteners (1 each)
3	AAA255NG1	Shim, Rail, A = 1 in. (1 each)
4	AAA255NG2	Shim, Rail, A = 2 in. (1 each)

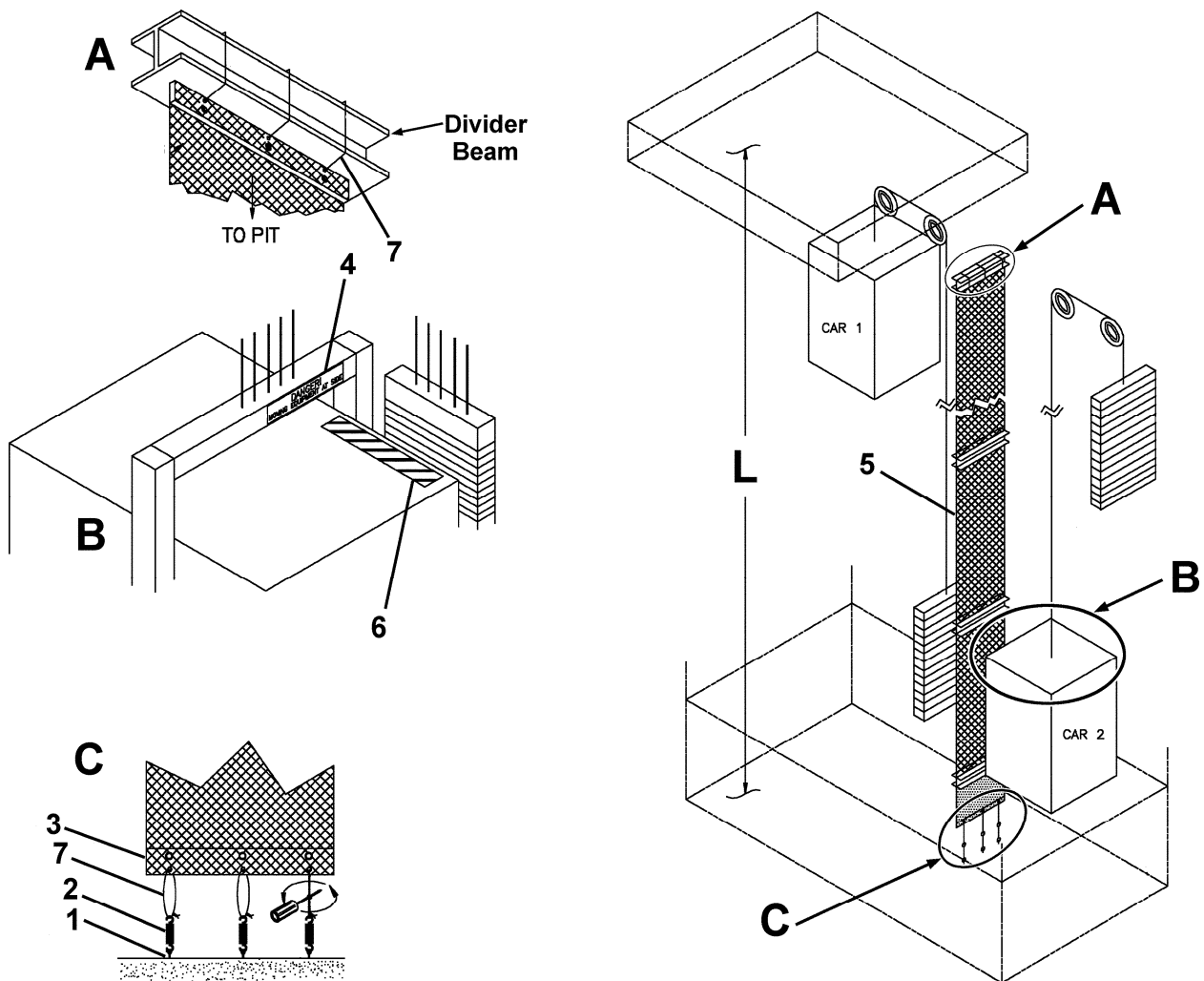
NOTE: This kit should be used to shim rails upward for Gen2 L installations.
The maximum lift is 3 in.



W/O VINTAGE		
REF. No.	PART No.	DESCRIPTION
1	54E12	Anchor, Wedge
2	AAA316HHL1	Bracket
3	336JW1	Clamp
4	AAA712Y2	Rope, Wire, Length = rise + pit + overhead + 4 ft.
5	509W8	S-Hook, A = 2.25 in., B = 0.75 in
	509W1	S-Hook, A = 1.75 in., B = 0.625 in
6	AAA485P1	Turnbuckle

Hoistway Screen Components

03-AAA29508C



REF. No.	W/O VINTAGE PART No.	DESCRIPTION
1	54E11	Anchor, Wedge
2	AAA91AV1	Assembly, Spring Extension
3	AAA299AMN1	Bar, Aluminum
4	AAA102ABY2	Label: "Danger! - Moving Equipment at Side"
5	AAA273F1	Netting, Pearl Weave (L ≤ 140 ft.)
6	AAA102ACS1	Sticker, Caution, Yellow and Black, 2 x 4 in.
7	AAA800A2	Wire, 14-Gauge, Black Annealed, 50 ft.