

Spring Buffer—Holeless

Spare Parts Leaflet

03-AAA320FY

October 17, 2012 / Page 1 of 10

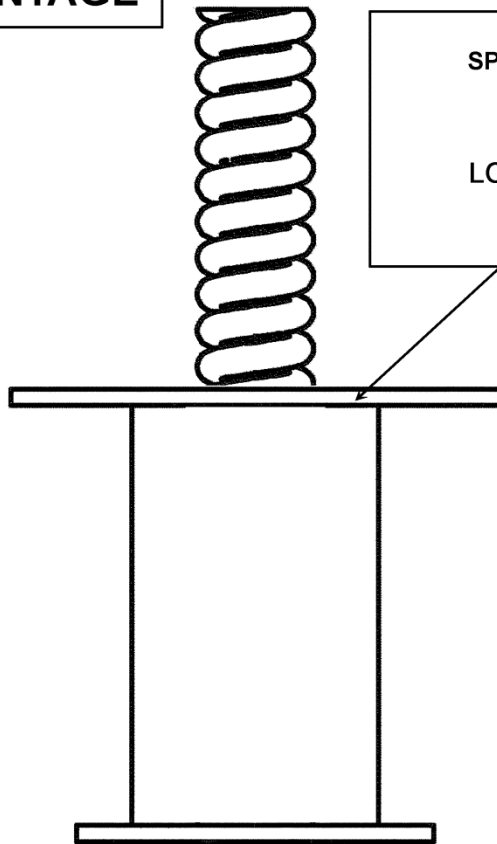
W/O VINTAGE

Spring Buffer Data Plate
Typical Setup

SPRING P/N
STROKE

LOAD RATING

See NOTE



NOTE: The spring buffer load rating is not the max striking load, but is the load required to compress the spring an amount equal to its stroke.

Unpublished Work—© Otis Elevator Co.; 2012

OTIS

Safety First!

SERVICE ENGINEERING

Otis Elevator Company

Bloomfield, Connecticut USA

Leaflet Description

This leaflet provides parts information for the AAA320FY spring buffer, used on LVML holeless elevator system.

Leaflet Revisions

Date Revised	Subject Matter Expert	Reason for Revision
August 20, 2004	Troy Chicoine	New SPL
October 17, 2012	Gary Mendrala	Added arrangements 9–56 and shim kit p/n on 10

Related Drawings

Drawing No.	Title	Drawing No.	Title
AAA320FY	Holeless Buffer Assembly	AAA90DU	Spring
---	---	---	---

Related Documents

Document ID	Title
SPL 03-AAA320FV	Telescopic Buffer Bumper
SPL 03-AAA320EP	Buffer Stand

Subject Matter Expert

Name	Department
Troy Chicoine	OSC Service Engineering

About Spare Parts Leaflets...

This document lists the lowest replaceable units (LRUs) for the standard version of the product. The LRUs are chosen by a team of Otis associates representing engineering and manufacturing.

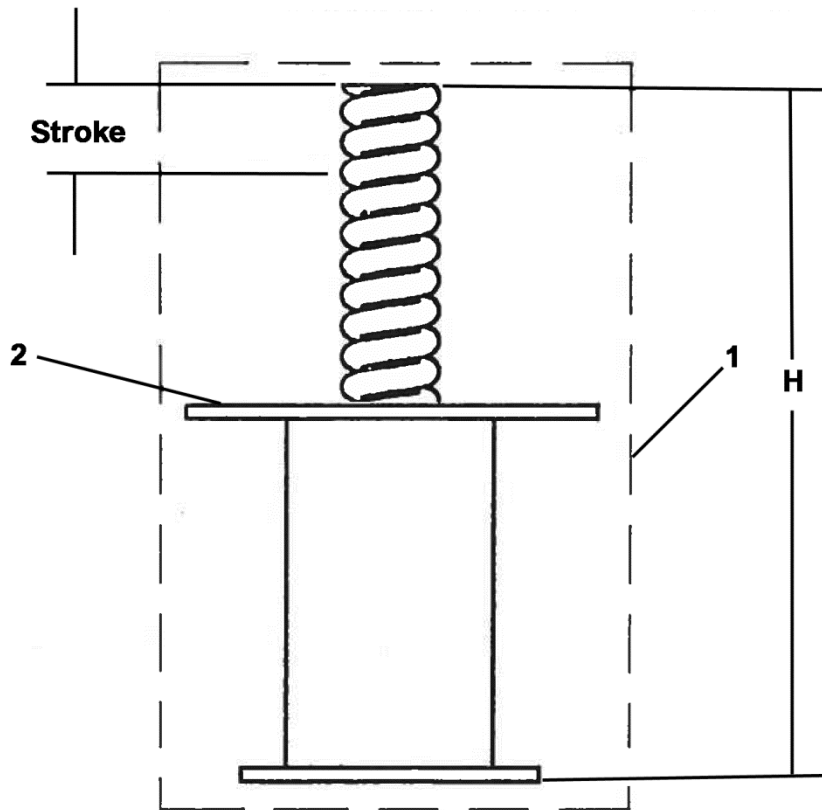
While goal of this document is to make parts identification as easy as possible, the document cannot be all-inclusive. Elevator and escalator contracts classified as “special” or “custom” are not addressed here. For such contracts, please refer to specified information, the contract folder, TIPs, Field Education Articles, Construction Letters, etc. for further information.

If you have any suggestions about this document, please contact the subject matter expert listed on this page.

Holeless Buffer Assembly

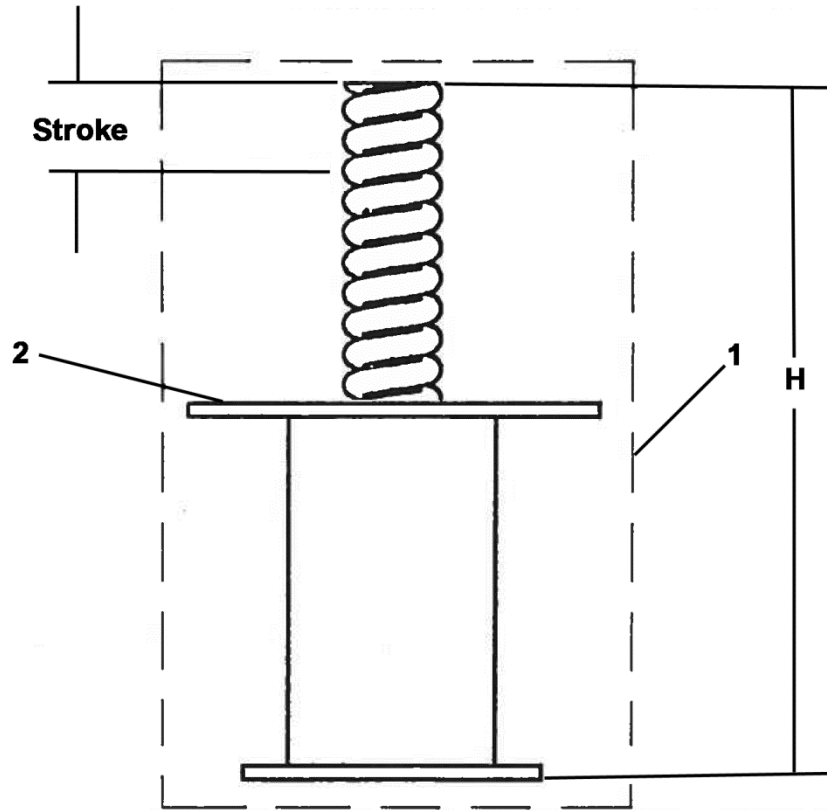
03-AAA320FY

1.50 in., 2.50 in. Stroke



W/O VINTAGE

REF. No.	PART No.	USED W/ SPRING	H (height, in.)	DESCRIPTION	STROKE (in.)	ALLOWABLE STRIKING LOAD (lb.)	
						MIN	MAX
1	AAA320FY1	AAA90DU6	31.76	Assembly, Spring Buffer	1.50	2900	5900
	AAA320FY2	AAA90DU7				5901	9500
	AAA320FY3	AAA90DU6	43.76			2900	5900
	AAA320FY4	AAA90DU7				5901	9500
	AAA320FY5	AAA90DU2	28.76		2.50	2900	5900
	AAA320FY6	AAA90DU3				5901	9500
	AAA320FY7	AAA90DU2	40.76		2900	5900	
	AAA320FY8	AAA90DU3			5901	9500	
2	102DP46	AAA90DU2	---	Tag, Data			
	102DP47	AAA90DU3	---				
	102DP48	AAA90DU6	---				
	102DP49	AAA90DU7	---				

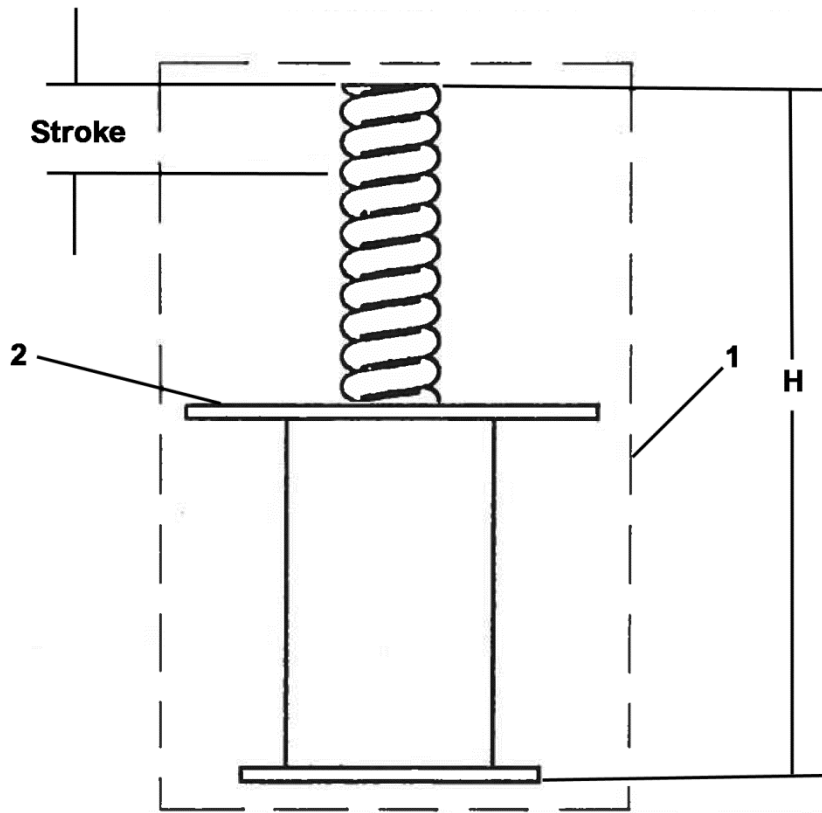


W/O VINTAGE

REF. No.	PART No.	USED W/ SPRING	H (height, in.)	DESCRIPTION	ALLOWABLE STRIKING LOAD (lb.)	
					MIN	MAX
1	AAA320FY9	90ND5	32.36	Assembly, Spring Buffer	2424	6060
	AAA320FY10	90TD4			6061	9014
	AAA320FY11	90AL2			9015	13500
	AAA320FY12	90ZD3			13501	20125
	AAA320FY13	90ND5	31.41		2424	6060
	AAA320FY14	90TD4			6061	9014
	AAA320FY15	90AL2			9015	13500
	AAA320FY16	90ZD3			13501	20125
2	102DP50	90ND5	---	Tag, Data		
	102DP51	90TD4	---			
	102DP52	90AL2	---			
	102DP53	90ZD3	---			

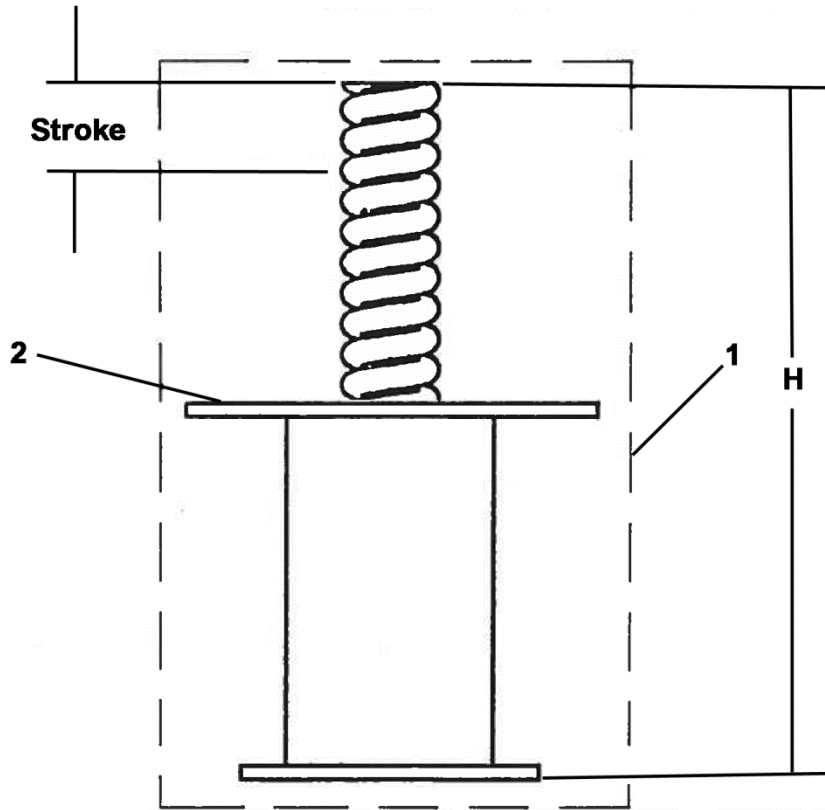
Holeless Buffer Assembly Stroke 3.75 in.

03-AAA320FY



W/O VINTAGE

REF. No.	PART No.	USED W/ SPRING	H (height, in.)	DESCRIPTION	ALLOWABLE STRIKING LOAD (lb.)	
					MIN	MAX
1	AAA320FY17	90ND5	44.37	Assembly, Spring Buffer	2424	6060
	AAA320FY18	90TD4			6061	9014
	AAA320FY19	90AL2			9015	13500
	AAA320FY20	90ZD3			13501	20125
	AAA320FY21	90ND5	43.42		2424	6060
	AAA320FY22	90TD4			6061	9014
	AAA320FY23	90AL2			9015	13500
	AAA320FY24	90ZD3			13501	20125
2	102DP50	90ND5	---	Tag, Data		
	102DP51	90TD4	---			
	102DP52	90AL2	---			
	102DP53	90ZD3	---			

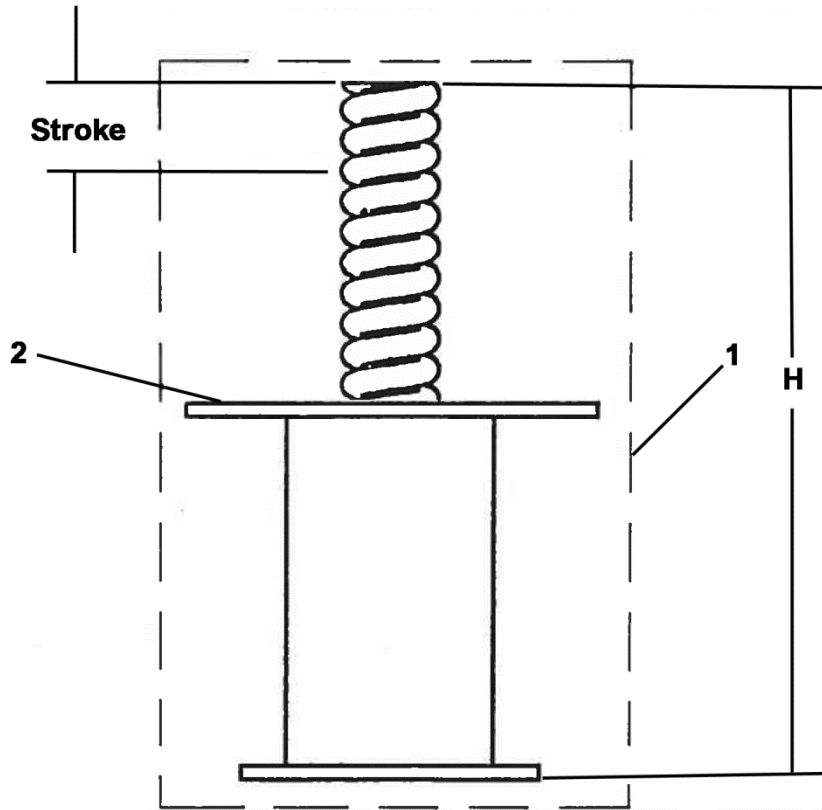


W/O VINTAGE

REF. No.	PART No.	USED W/ SPRING	H (height, in.)	DESCRIPTION	ALLOWABLE STRIKING LOAD (lb.)	
					MIN	MAX
1	AAA320FY25	90ND5	56.37	Assembly, Spring Buffer	2424	6060
	AAA320FY26	90TD4			6061	9014
	AAA320FY27	90AL2			9015	13500
	AAA320FY28	90ZD3			13501	20125
	AAA320FY29	90ND5	55.43		2424	6060
	AAA320FY30	90TD4			6061	9014
	AAA320FY31	90AL2			9015	13500
	AAA320FY32	90ZD3			13501	20125
2	102DP50	90ND5	---	Tag, Data		
	102DP51	90TD4	---			
	102DP52	90AL2	---			
	102DP53	90ZD3	---			

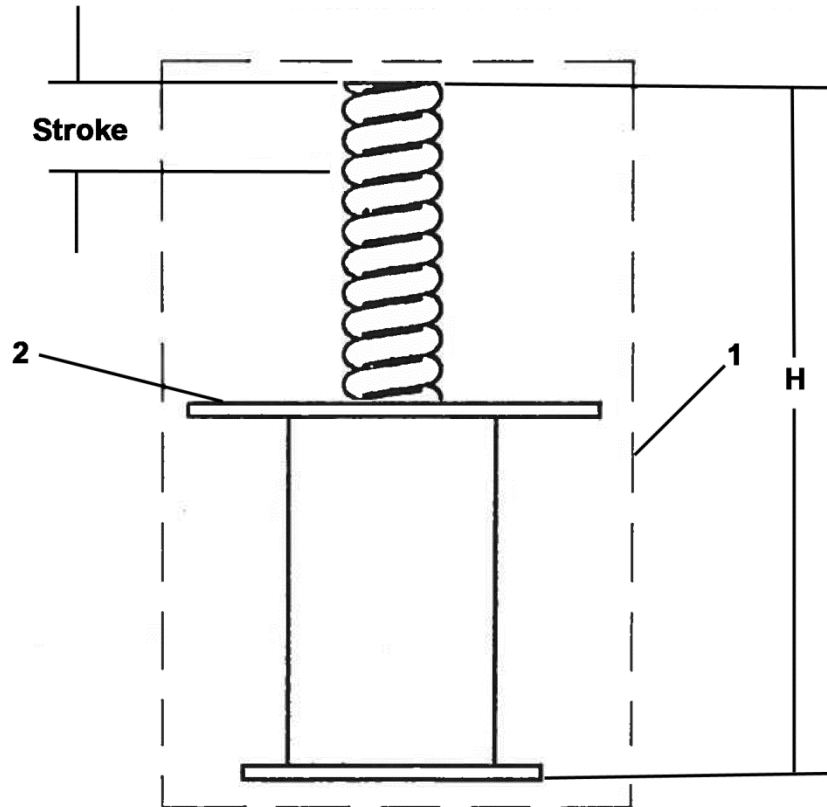
Holeless Buffer Assembly Stroke 3.75 in.

03-AAA320FY



W/O VINTAGE

REF. No.	PART No.	USED W/ SPRING	H (height, in.)	DESCRIPTION	ALLOWABLE STRIKING LOAD (lb.)	
					MIN	MAX
1	AAA320FY33	90ND5	31.61	Assembly, Spring Buffer	4040	6060
	AAA320FY34	90TD4			6061	9014
	AAA320FY35	90AL2			9015	13500
	AAA320FY36	90ZD3			13501	20125
	AAA320FY37	90ND5	30.67		4040	6060
	AAA320FY38	90TD4			6061	9014
	AAA320FY39	90AL2			9015	13500
	AAA320FY40	90ZD3			13501	20125
2	102DP50	90ND5	---	Tag, Data		
	102DP51	90TD4	---			
	102DP52	90AL2	---			
	102DP53	90ZD3	---			

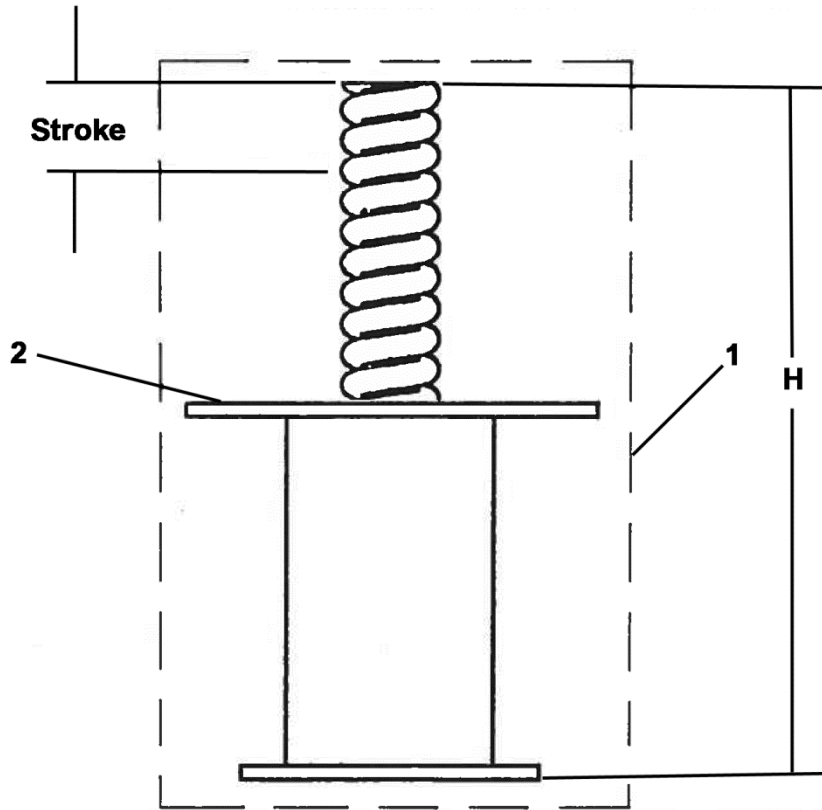


W/O VINTAGE

REF. No.	PART No.	USED W/ SPRING	H (height, in.)	DESCRIPTION	ALLOWABLE STRIKING LOAD (lb.)	
					MIN	MAX
1	AAA320FY41	90ND5	43.62	Assembly, Spring Buffer	4040	6060
	AAA320FY42	90TD4			6061	9014
	AAA320FY43	90AL2			9015	13500
	AAA320FY44	90ZD3			13501	20125
	AAA320FY45	90ND5	42.67		4040	6060
	AAA320FY46	90TD4			6061	9014
	AAA320FY47	90AL2			9015	13500
	AAA320FY48	90ZD3			13501	20125
2	102DP50	90ND5	---	Tag, Data		
	102DP51	90TD4	---			
	102DP52	90TD4	---			
	102DP53	90ZD3	---			

Holeless Buffer Assembly Stroke 3.75 in.

03-AAA320FY

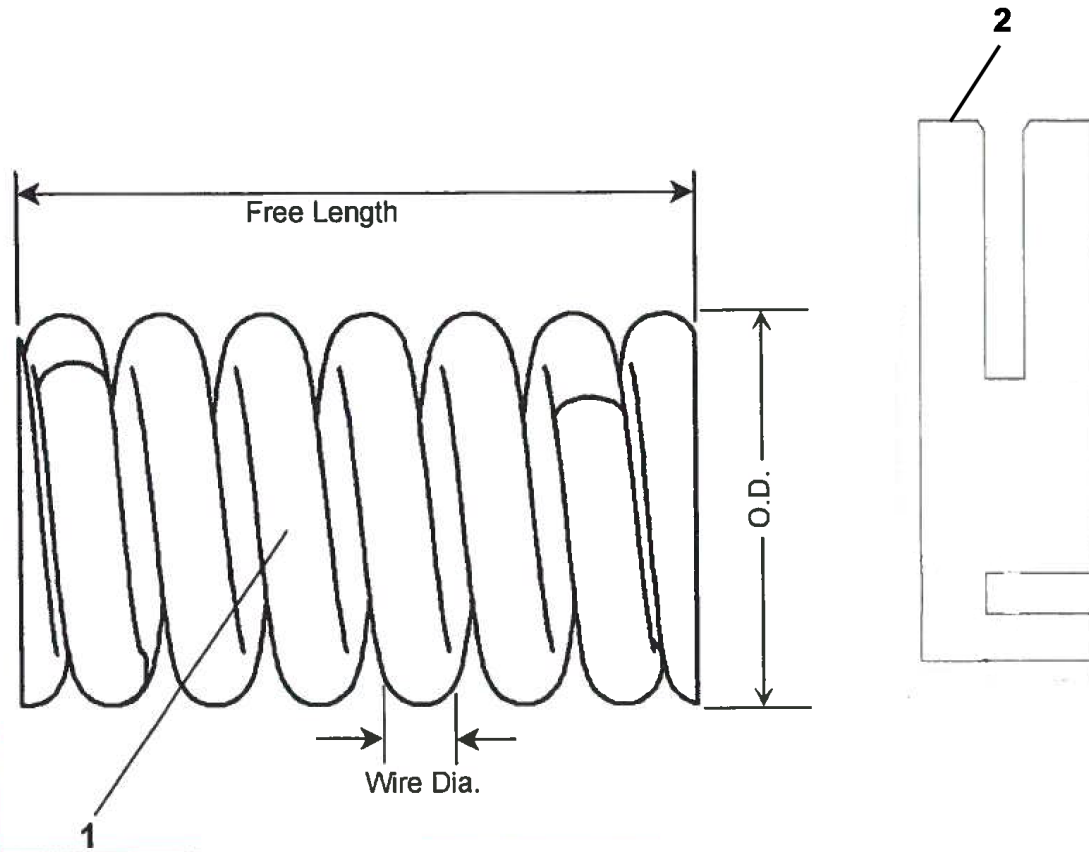


W/O VINTAGE

REF. No.	PART No.	USED W/ SPRING	H (height, in.)	DESCRIPTION	ALLOWABLE STRIKING LOAD (lb.)	
					MIN	MAX
1	AAA320FY49	90ND5	55.63	Assembly, Spring Buffer	4040	6060
	AAA320FY50	90TD4			6061	9014
	AAA320FY51	90AL2			9015	13500
	AAA320FY52	90ZD3			13501	20125
	AAA320FY53	90ND5	54.68		4040	6060
	AAA320FY54	90TD4			6061	9014
	AAA320FY55	90AL2			9015	13500
	AAA320FY56	90ZD3			13501	20125
2	102DP50	90ND5	---	Tag, Data		
	102DP51	90TD4	---			
	102DP52	90AL2	---			
	102DP53	90ZD3	---			

Spring, Shims

03-AAA320FV



		W/O VINTAGE				
REF. No.	PART No.	WIRE DIA. (in.)	O.D. (in.)	LENGTH (in.)	DESCRIPTION	
1	AAA90DU2	1.38	6.25	15.50	Spring	
	AAA90DU3	1.75	8.19	15.50		
	AAA90DU6	1.19	4.44	14.50		
	AAA90DU7	1.50	5.69	14.50		
	90ND5	0.81	3.63	18.50		
	90TD4	1.00	4.50	18.50		
	90AL2	1.25	5.75	18.62		
	90ZD3	1.50	6.88	18.50		
2	AAA320FY400	---	---	---	Shim Kit, Includes 8 Shims, 0.388 in. Total Thickness	