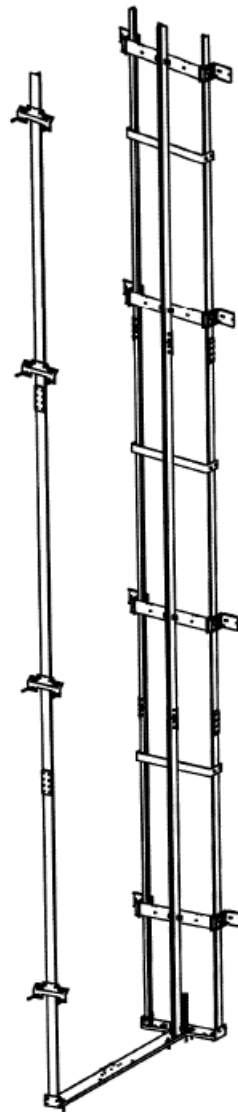


**Gen3 Core (200)
Hoistway Material
(2100–3500 lb. Duties)**

**Spare Parts Leaflet
03-WAA29508E**

April 26, 2023 / Page 1 of 9



OTIS

This document does not contain any technical data subject to EAR or ITAR

**SERVICE ENGINEERING
Otis Elevator Company
Bloomfield, Connecticut USA**

Unpublished Work—© Otis Elevator Co.; 2023

Leaflet Description

This spare parts leaflet covers the hoistway material spare parts used on the 2100–3500 lb. duties Gen3 Core 150/200.

Leaflet Revisions

Date Revised	Subject Matter Expert	Reason for Revision
October 19, 2022	Maoyou Yu	New SPL
April 26, 2023	Maoyou Yu	Updated Ref. 1 on p. 3

Related Drawings

Drawing No.	Title	Drawing No.	Title
FAA320FC	Car PU buffer	AAA26ZX	Rail Fasteners and Bracket Mounting Hardware
ODS0804AAC,	Car and Cwt rail brackets ODS	AAA22940AV	Anti-Snag Guard for Car and Counterweight Brackets
ODS0803AAE	Car Rail ODS	ODS0805AAF	Cwt Rail ODS

Related Documents

Document ID	Title
SPL 03-FAA320FC	Car Buffer

Subject Matter Expert

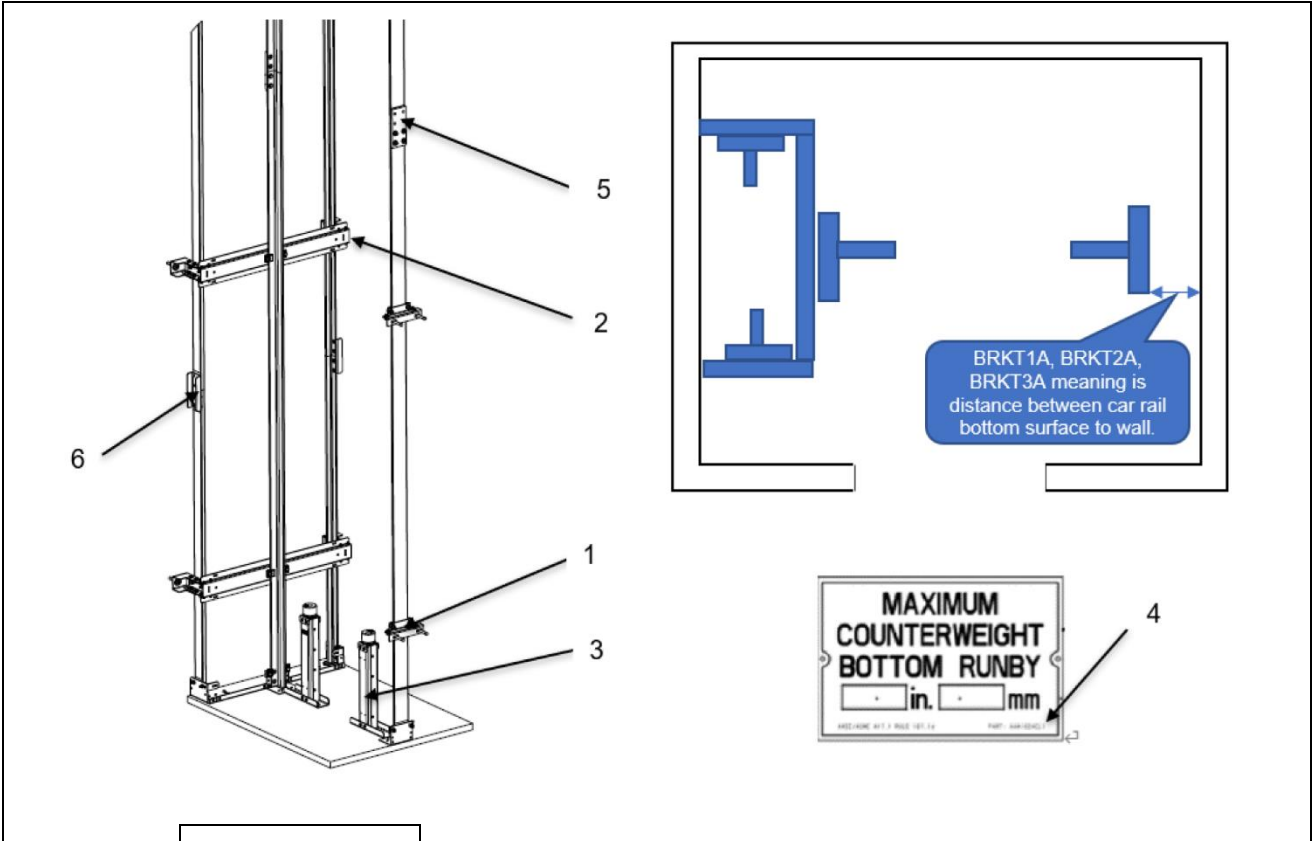
Name	Department
Maoyou Yu	Engineer LDC/Shanghai

About Spare Parts Leaflets...

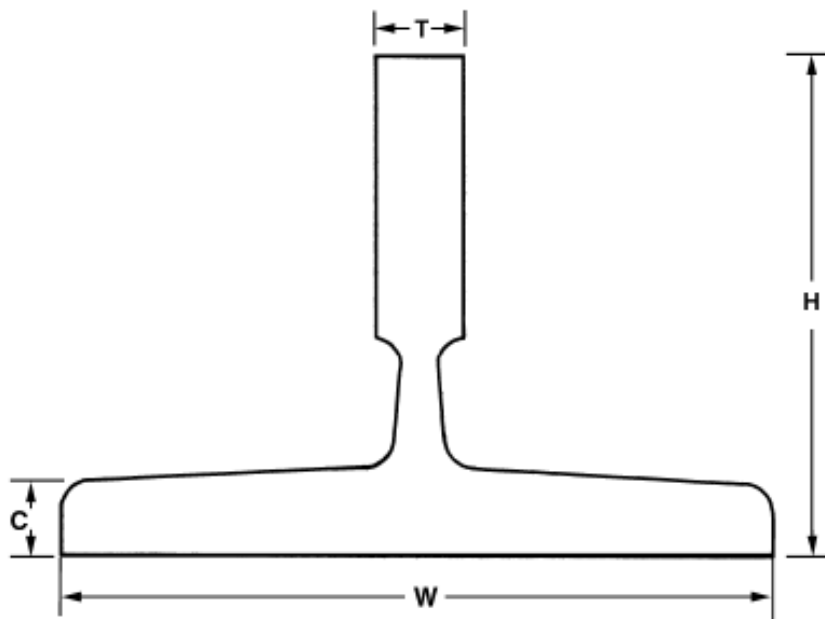
This document lists the lowest replaceable units (LRUs) for the standard version of the product. The LRUs are chosen by a team of Otis associates representing engineering and manufacturing.

While goal of this document is to make parts identification as easy as possible, the document cannot be all-inclusive. Elevator and escalator contracts classified as “special” or “custom” are not addressed here. For such contracts, please refer to specified information, the contract folder, TIPs, Field Education Articles, Construction Letters, etc. for further information.

If you have any suggestions about this document, please contact the subject matter expert listed on this page.



W/O VINTAGE		
REF. No.	Part No.	DESCRIPTION
1	---	Bracket and Attachment, Car Rail (Car rail bracket drawing numbers are AAA22100AB and AAA22100BH. For detailed part number, including rail bracket and its fasteners; contact customer service.
2	---	Bracket and Attachment, Car and CWT Combination Rail (combo-bracket drawing number is WAA22100E for Non-seismic, WAA22100F for seismic). Detailed part numbers include rail bracket and its fasteners. Contact customer service and order records.
3	---	Buffer, Car PU, Type FAA320FC (see SPL 03-FAA320FC)
4	AAA102ACL1	Plate, Data (CWT run by)
5	AAA386MQG1	Fishplate with internal thread, Non-Seismic, Rail Size = # 1.5, Min value of BRKT1A through BRKT3A should be less than 50.8 mm
	AAA386LKQ2	Fishplate without internal thread, Non-Seismic, Rail Size = # 1.5, Min value of BRKT1A through BRKT3A should be more than or equal to 50.8 mm
	AAA386MQH1	Fishplate with two stiffeners, Zones 2–4, Rail Size = #1.5, Min value of BRKT1A through BRKT3A should be less than 76.2 mm
	AAA386MQG2	Fishplate without stiffeners, Zones 2–4, Rail Size = #1.5, Min value of BRKT1A through BRKT3A should be more than or equal to 76.2 mm
6	AAA347CGG1	Plate, Fish, Non-Seismic, Rail Size = # 2
	AAA386LZW2	Plate, Fish, Zones 2–4, Rail Size = #1.5

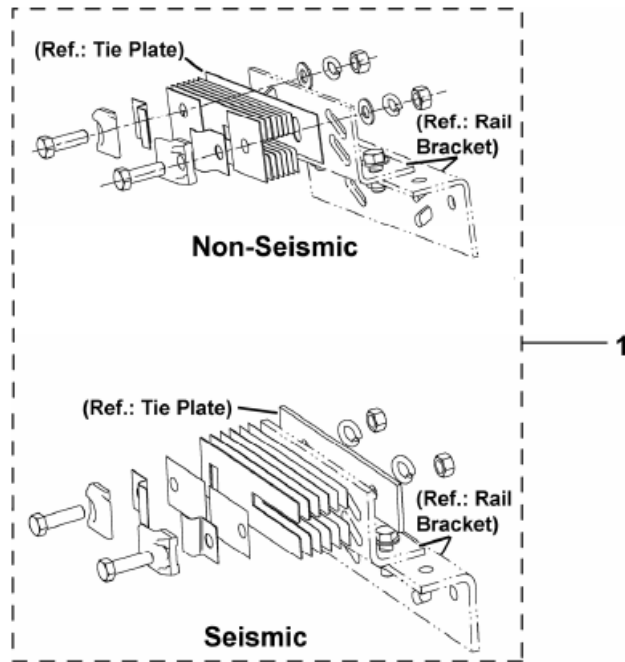


Rail Designation	Weight (lb./ft.)	Thickness (in.)	C (in.)	Height (in.)	Width (in.)	Description
#2/T89	8.0	5/8	5/16	2-7/16	3-1/2	For part numbers, contact customer service and order records
#1-1/2/T127-1	12.0	5/8	5/16	3-1/2	5	

Car Rail Clip Kits for Car rail Bracket

Non-Seismic and Seismic Zones

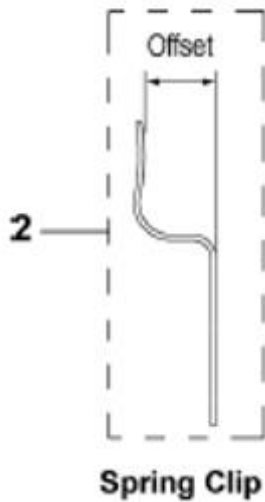
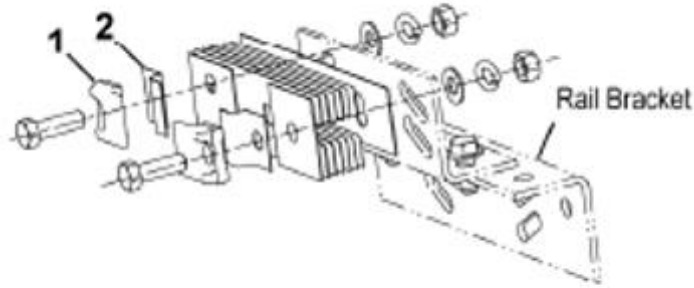
03-WAA29508E



W/O VINTAGE		Rail Fastener Kit (excluding rail brackets)			
REF. No.	PART No.	Clip Style	Rail Size Designator	Zone	Tie Plate
1	AAA26ZX57	Forged Sliding	1-1/2/T127-1	None-Seismic	without
	AAA26ZX64	Forged Sliding	1-1/2/T127-1	Seismic	without

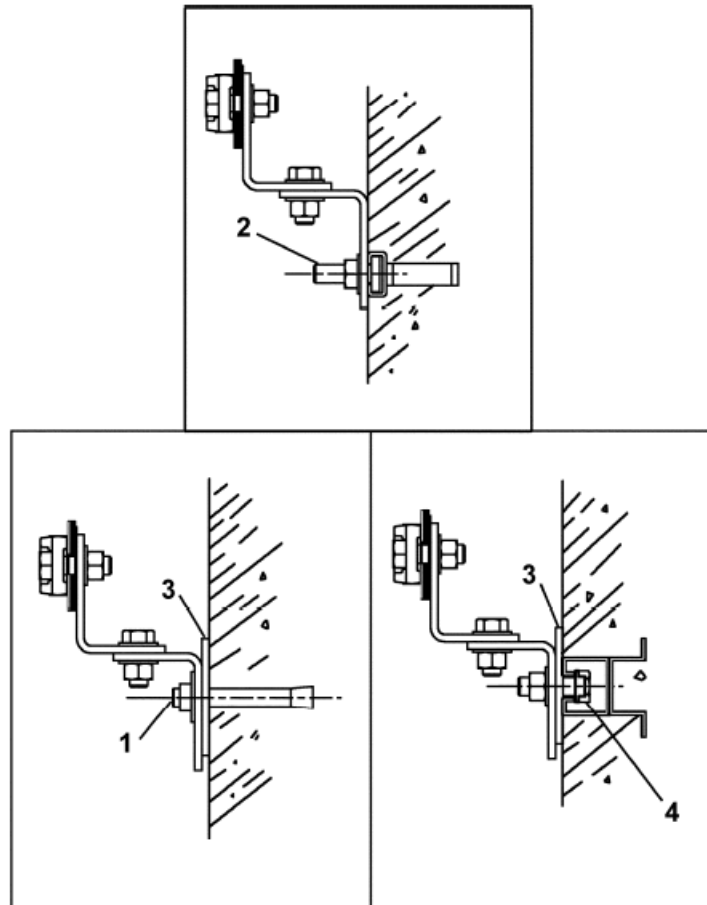
* Not shown

Non-Seismic and Seismic Zones

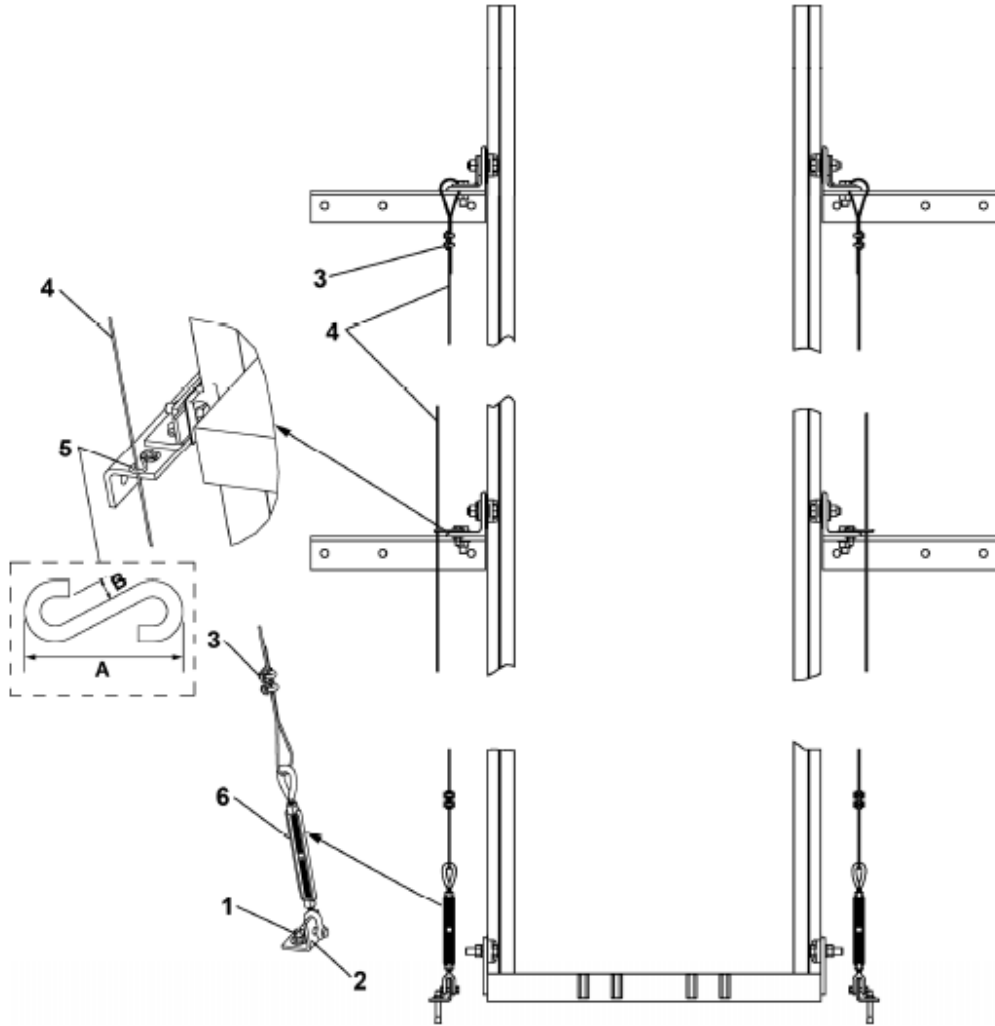


W/O VINTAGE		Rail Fastener Kit (excluding rail brackets)			
REF. No.	PART No.	Clip Style	Rail Size Designator	Zone	DESCRIPTION
1	AAA339QC3	Steel Sliding	2/T89	None-Seismic	Clip, Rail
	339LT1	Forged Sliding	1-1/2/T127-1	Seismic & Non-Seismic	
2	93FD1	Forged Sliding	1-1/2/T127-1	Seismic & Non-Seismic	Clip, Spring, Offset = 0.37 in.

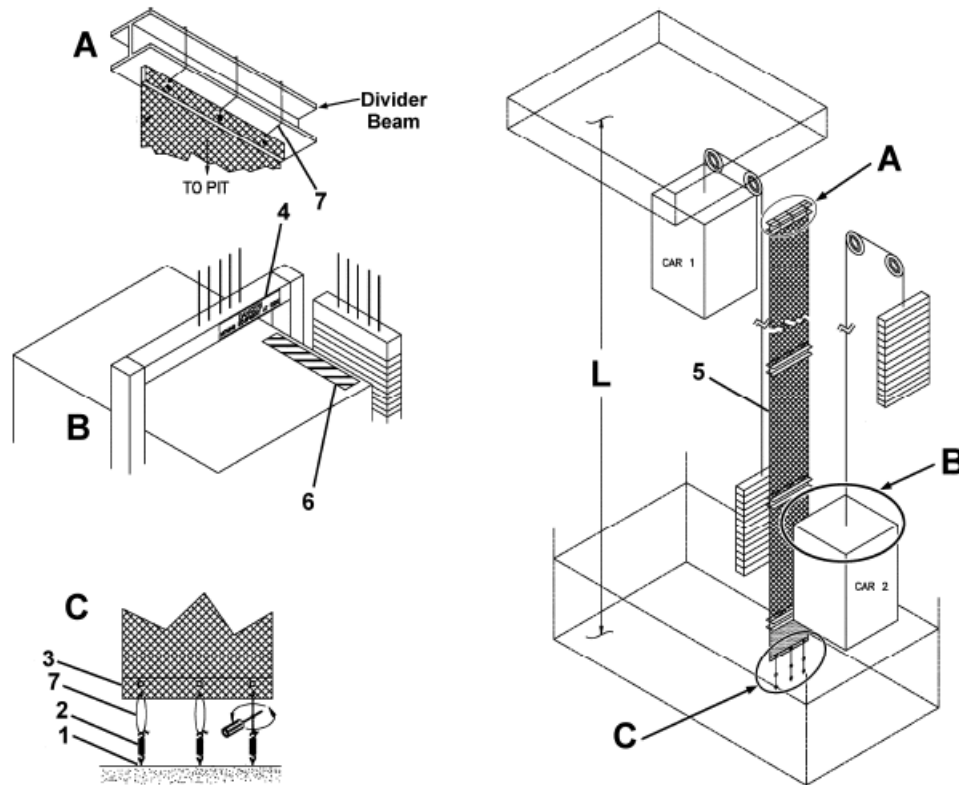
* Not shown



WAA29508E			
REF. No.	PART No.	DESCRIPTION	APPLICATION
1	54E25	Anchor, Wedge	Concrete Wall 5/8 UNC x 1-1/2 L Thread
2	AAA65GV5	Bolt, M16 Thread	HILTI Anchoring System, Seismic
	AAA65GV1		HALFEN Anchoring System, Non-Seismic
3	127XA10	Washer, Packing	Concrete, Brick, CMU, Wood Beam
4	AAA386LXH5	Washer, Insert	Steel Inserts (in brick or concrete)



WAA29508E		
REF. No.	PART No.	DESCRIPTION
1	54E12	Anchor, Wedge
2	AAA316HHL1	Bracket
3	336JW1	Clamp
4	AAA712Y2	Rope, Wire, Length = rise + pit + overhead + 4 ft. (Order by foot)
5	509W8	S-Hook, A = 2.25 in., B = 0.75 in.
	509W1	S-Hook, A = 1.75 in., B = 0.625 in.
6	AAA485P1	Turnbuckle



WAA29508E		
REF. No.	PART No.	DESCRIPTION
1	54E11	Anchor, Wedge
2	AAA91AV1	Assembly, Spring Extension
3	AAA299AMN1	Bar, Aluminum
4	AAA102ABY2	Label, "Danger! - Moving Equipment at Side"
5	AAA273F1	Netting, Pearl Weave Material Plastic or Metallic (L ≤ 140 ft.)
	AAA273F2	Netting, Pearl Weave Material Plastic or Metallic (L ≤ 70 ft.)
	AAA273F3	Netting, Pearl Weave Material Plastic or Metallic (L ≤ 45 ft.)
	AAA273F4	Netting, Pearl Weave Material Plastic or Metallic (L ≤ 20 ft.)
	AAA273F5	Netting, Pearl Weave Material Plastic or Metallic (L ≤ 10 ft.)
6	AAA102ACS1	Sticker, Caution, Yellow and Black, 2 x 4 in.
7	AAA800A2	Wire, 14-Gauge, Black Annealed, 50 ft.