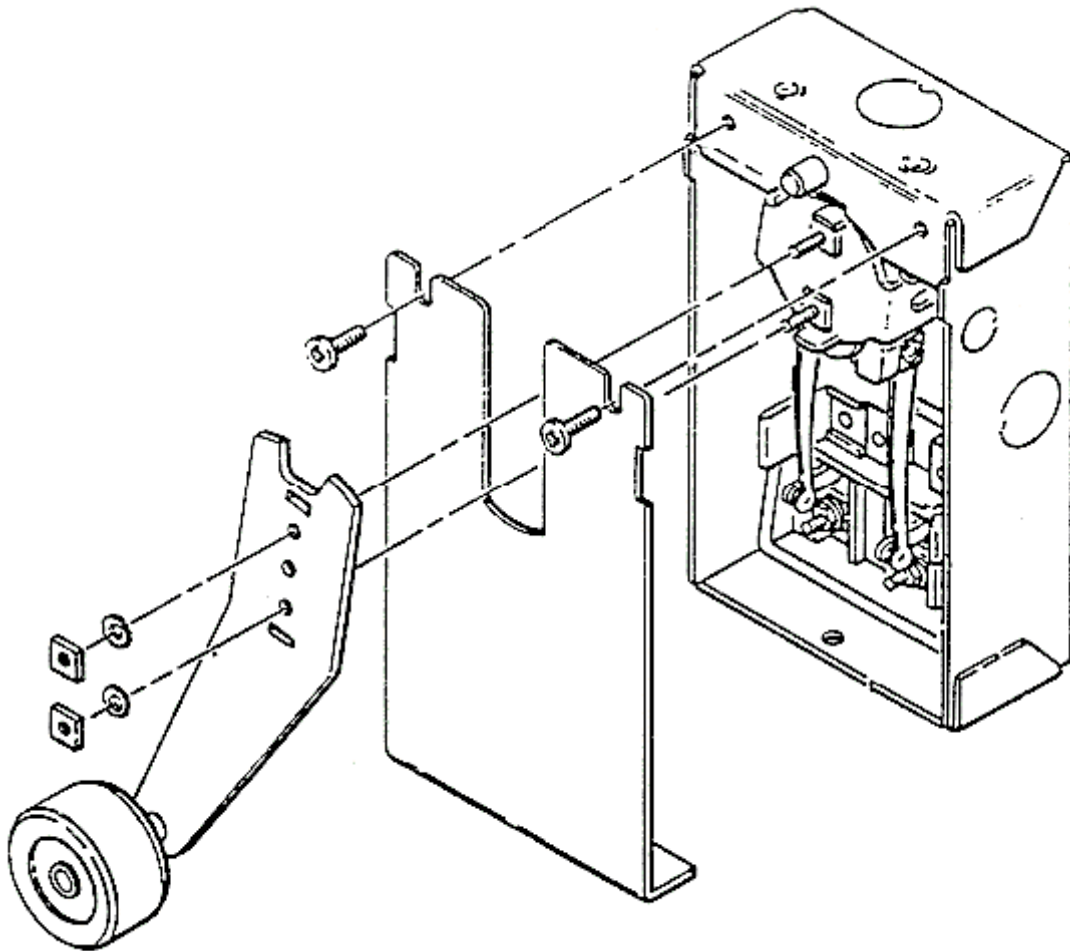


Type 6098
Mechanical Switches

Spare Parts Leaflet
05-6098 (revision H)
May 1982 / Page 1 of 22



OTIS

This document does not contain any
technical data subject to EAR or ITAR

SERVICE ENGINEERING
Otis Elevator Company
Bloomfield, Connecticut USA

Unpublished Work—© Otis Elevator Co.; 1982

General Information

The 6098 mechanical switches although made in several types, all use one or another of what is known as the 6151 contact box and contacts, shown in Figs. 33 to 44 inclusive. These contact boxes, in turn, are composed of different arrangements of a few simple parts which are small and easily adjusted.

The switches shown in Figs. 1 to 26 inclusive are shown with the covers most commonly used. These same switches, however, can be furnished with oil pots by the use of suitable oil tight covers, Figs. 27, 28 and 29, instead of the plain ones. A more complete description of switches with oil pots will be found on page 2A.

The moisture proof and explosion proof switches consist of the 6151 contact boxes enclosed in heavy cast iron housings and housing covers, Fig. 30, 31, and 32. Regular switch arms Ref. 50 to 73 are used, the two small rectangular perforations fitting over corresponding lugs on the outer face of the large pin, which on its inner end, connects to the switch arm hub Ref. 119. The small hole in the center of the pin is tapped for a machine screw, which holds the arm in place. The gasket Ref. 88 is used in moisture proof switches only; in other respects, construction of the latter is identical with that of the explosion proof switches.

The switches with regular covers and those with oil pots can readily be identified from the material list number stamped on the front, as shown in Figs. 7 and 8; the moisture and explosion proof types have the number stamped on one of the round bosses on the lower part of the cover. The material list numbers have been purposely omitted from the other illustrations, since there can be several variations of each switch, depending on which contact box, Figs. 33 and 44, is used.

The illustrations in this leaflet are numbered from Fig. 1 to Fig. 45 inclusive; the reference numbers commence at 50 and end with 133. This is done to avoid any possible confusion which might result from the same number representing both a figure and a part.

6098 Mechanical Switches, With Oil Pot

These switches are provided with covers having a receptacle in which the contacts are immersed in oil to protect them against non-inflammable corrosive vapors, or to eliminate the noise of striking contacts. These switches are neither moisture proof nor explosion proof and must be mounted vertically; the top knockouts should be used for wiring.

Each is provided with sufficient #16 solid copper "Flemenol" wire to run to the nearest pull box. Standard stranded wire must not be used; oil causes the rubber to deteriorate and the space between the strands causes the oil to be siphoned from the pot.

With each switch there is furnished a 1/4 pint can of oil. Otis specification #24 which is to be used if the switch is to be mounted on the car. If the switch is to be mounted in the hoistway, use **Otis Brake-Magnet Oil** only. After filling the cover with the correct oil to about 1" from the top of oil pot, replace cover slowly to prevent gushing of oil. When the oil needs replenishment, either kind can be secured from any Otis office.

When used on the car as a **Door-Zone Limit**, the switch is secured to the mounting bracket with rubber sound - isolating fastening which is furnished with the mounting parts. With this fastening, the switch case must not be secured to rigid conduit.

The following complete switches are no longer available, for replacement see table below.

Type 6098 Mechanical Switches

Switch	Replaced By	Switch	Replaced By	Switch	Replaced By	Switch	Replaced By
6098AY1	A6098AY1	6098FC3	A6098FC3	6098FC15	A6098FC15	6098HC7	A6098HC7
6098AY2	A6098AY2	6098FC4	A6098FC4	6098FC16	A6098FC16	6098HC8	A6098HC8
6098AY3	A6098AY3	6098FC5	A6098FC5	6098GC1	A6098GC1	6098HC9	A6098HC9
6098AY4	A6098AY4	6098FC6	A6098FC6	6098GC2	A6098GC2	6098HC10	A6098HC10
6098AY5	A6098AY5	6098FC7	A6098FC7	6098GC3	A6098GC3	6098HC11	A6098HC11
6098AY6	A6098AY6	6098FC8	A6098FC8	6098GC4	A6098GC4	6098HC12	A6098HC12
6098AY7	A6098AY7	6098FC9	A6098FC9	6098HC1	A6098HC1	6098HC13	A6098HC13
6098AY8	A6098AY8	6098FC10	A6098FC10	6098HC2	A6098HC2	6098HC14	A6098HC14
6098CC1	A6098CC1	6098FC11	A6098FC11	6098HC3	A6098HC3	6098HC15	A6098HC15
6098CC2	A6098CC2	6098FC12	A6098FC12	6098HC4	A6098HC4	6098HC16	A6098HC16
6098FC1	A6098FC1	6098FC13	A6098FC13	6098HC5	A6098HC5		
6098FC2	A6098FC2	6098FC14	A6098FC14	6098HC6	A6098HC6		

Index to parts for switches show in this leaflet.

Material List	See Page	Material List	See Page	Material List	See Page	Material List	See Page	Material List	See Page	Material List	See Page	Material List	See Page
6098C1	6	6098AL1	7	6098BZ1	8	6098HC1	10	A6098B7	10A	A6098B37	10A	A6098GC3	11
6098C2	6	6098AL2	7	6098BZ2	8	6098HC2	10	A6098B8	10A	A6098B38	10A	A6098GC4	11
6098C3	6	6098AL3	7	6098CC1	8	6098HC3	10	A6098B9	10A	A6098AY1	11	A6098GC5	11
6098C4	6	6098AS1	7	6098CC2	8	6098HC4	10	A6098B10	10A	A6098AY2	11	A6098GC6	11
6098C5	6	6098AY1	7	6098CE1	8	6098HC5	10	A6098B11	10A	A6098AY3	11	A6098GC7	11
6098C6	6	6098AY2	7	6098CE2	8	6098HC6	10	A6098B12	10A	A6098AY4	11	A6098GC8	11
6098C7	6	6098AY3	7	6098CE3	8	6098HC7	10	A6098B13	10A	A6098AY5	11	A6098HC1	12
6098C8	6	6098AY4	7	6098CE4	8	6098HC8	10	A6098B14	10A	A6098AY6	11	A6098HC2	12
6098D1	6	6098AY5	7	6098CM1	8	6098HC9	10	A6098B15	10A	A6098AY7	11	A6098HC3	12
6098D2	6	6098AY6	7	6098CM2	8	6098HC10	10	A6098B16	10A	A6098AY8	11	A6098HC4	12
6098D3	6	6098AY7	7	6098FC1	9	6098HC11	10	A6098B17	10A	A6098CC1	11	A6098HC5	12
6098D4	6	6098AY8	7	6098FC2	9	6098HC12	10	A6098B18	10A	A6098CC2	11	A6098HC6	12
6098D5	6	6098BC1	7	6098FC3	9	6098HC13	10	A6098B19	10A	A6098FC1	11	A6098HC7	12
6098D6	6	6098BC2	7	6098FC4	9	6098HC14	10	A6098B20	10A	A6098FC2	11	A6098HC8	12
6098E1	6	6098BC3	7	6098FC5	9	6098HC15	10	A6098B21	10A	A6098FC3	11	A6098HC9	12
6098E2	6	6098BC4	7	6098FC6	9	6098HC16	10	A6098B22	10A	A6098FC4	11	A6098HC10	12
6098E3	6	6098BC5	7	6098FC7	9	6098ZA1	10	A6098B23	10A	A6098FC5	11	A6098HC11	12
6098E4	6	6098BC6	7	6098FC8	9	6098ZA2	10	A6098B24	10A	A6098FC6	11	A6098HC12	12
6098E5	6	6098BJ1	8	6098FC9	9	6098ZA3	10	A6098B25	10A	A6098FC7	11	A6098HC13	12
6098E6	6	6098BJ2	8	6098FC10	9	6098ZA4	10	A6098B26	10A	A6098FC8	11	A6098HC14	12
6098E7	6	6098BJ3	8	6098FC11	9	A6098A1	10A	A6098B27	10A	A6098FC9	11	A6098HC15	12
6098E8	6	6098BJ4	8	6098FC12	9	A6098A2	10A	A6098B28	10A	A6098FC10	11	A6098HC16	12
6098E9	6	6098BJ5	8	6098FC13	9	A6098A3	10A	A6098B29	10A	A6098FC11	11	SF6012F11	12
6098E10	6	6098BJ6	8	6098FC14	9	A6098A4	10A	A6098B30	10A	A6098FC12	11		
6098E11	6	6098BJ7	8	6098FC15	9	A6098B1	10A	A6098B31	10A	A6098FC13	11		
6098E12	6	6098BJ8	8	6098FC16	9	A6098B2	10A	A6098B32	10A	A6098FC14	11		
6098E13	6	6098BJ9	8	6098GC1	9	A6098B3	10A	A6098B33	10A	A6098FC15	11		
6098E14	6	6098BJ10	8	6098GC2	9	A6098B4	10A	A6098B34	10A	A6098FC16	11		
6098E15	6	6098BJ11	8	6098GC3	9	A6098B5	10A	A6098B35	10A	A6098GC1	11		
6098E16	6	6098BJ12	8	6098GC4	9	A6098B6	10A	A6098B36	10A	A6098GC2	11		

For description of switches, see pages 3, 4, and 5.

For arms and adapters, see pages 18, 19.

Description of Switches

05-6098

Returning Spring at Location		See Fig. No.	M.L. and Name of Switch	Uses Contact Box Page 17, See Fig.
R Part No. of Spring	L Part No. of Spring			
<i>BRAKE TYPE SWITCH - SINGLE POLE MAKING</i>				
90YA18		25	6098AL2 Without Oil Pot - With Arm 287BA5	36
<i>BRAKE TYPE SWITCH - SINGLE POLE BREAKING</i>				
90YA18		25	6098AL1 Without Oil Pot- With Arm 287BA5	37
90YA18		25	6098AL3 Without Oil Pot- With Arm 287BA5	37
90YA18		26	6098AS1 Without Oil Pot- With Arm 287BA5	37
90HB8		8 & 30	6098BZ1 Explosion Proof- With Arm 287BA5	37
90HB8		8 & 30	6098BZ2 Moisture Proof - With Arm 287BA5	37
<i>CAM TYPE SWITCH - SINGLE POLE BREAKING</i>				
		17	6098C1 Without Oil Pot - With Arm 287J3 and Cam 327JA3	35
		17 & 28	6098C2 With Oil Pot - With Arm 287J3 and Cam 327JA3	35
		17 & 31	A6098AY1 Explosion Proof - With Arm 287J3 and Cam 327JA3	35
		17 & 31	A6098AY2 Moisture Proof- With Arm 287J3 and Cam 327JA3	35
		18	6098C3 Without Oil Pot - With Arm 287J4 and Cam 327JA4	34
		18 & 29	6098C4 With Oil Pot - With Arm 287J4 and Cam 327JA4	34
		18 & 32	A6098AY5 Explosion Proof - With Arm 287J4 and Cam 327JA4	34
		18 & 32	A6098AY6 Moisture Proof- With Arm 287J4 and Cam 327JA4	34
<i>CAM TYPE SWITCH - DOUBLE POLE BREAKING</i>				
		17	6098C5 Without Oil Pot - With Arm 287J3 and Cam 327JA3	39
		17 & 28	6098C6 With Oil Pot - With Arm 287J3 and Cam 327JA3	39
		17 & 31	A6098AY3 Explosion Proof - With Arm 287J3 and Cam 327JA3	39
		17 & 31	A6098AY4 Moisture Proof- With Arm 287J3 and Cam 327JA3	39
		18	6098C7 Without Oil Pot - With Arm 287J4 and Cam 327JA4	38
		18 & 29	6098C8 With Oil Pot - With Arm 287J4 and Cam 327JA4	38
		18 & 32	A6098AY7 Explosion Proof - With Arm 287J4 and Cam 327JA4	38
		18 & 32	A6098AY8 Moisture Proof- With Arm 287J4 and Cam 327JA4	38
<i>EXIT PANEL SWITCH, CAR SWINGING SIDE - SINGLE POLE MAKING</i>				
90YA18		23	6098CM1 Without Oil Pot - With Arm 287AB1	41
	90YA18	24	6098CM2 Without Oil Pot - With Arm 287AB2	42
<i>FLOOR STOP TYPE SWITCH - SINGLE POLE DOUBLE THROW WITH AUX. CONTACT</i>				
		11	A6098A1 Without Oil Pot - With Arm A287E2, with Roller	33
		11 & 27	A6098A2 With Oil Pot - With Arm A287E2, with Roller	33
		11 & 30	A6098CC1 Moisture Proof - With Arm A287E2, with Roller	33
		11 & 30	A6098CC2 Explosion Proof - With Arm A287E2, with Roller	33
<i>GATE TYPE SWITCH - SINGLE POLE MAKING</i>				
		10	6098E1 Without Oil Pot - With Arm 287P1	35
		10 & 27	6098E3 With Oil Pot - With Arm 287P1	35
	90YA18	10 & 30	A6098HC1 Moisture Proof - With Arm 287P1	35
	90YA18	10 & 30	A6098HC5 Explosion Proof - With Arm 287P1	35
		9	6098E2 Without Oil Pot - With Arm 287P2	34
		9 & 27	6098E4 With Oil Pot - With Arm 287P2	34
	90YA18	9 & 30	A6098HC2 Moisture Proof - With Arm 287P2	34
	90YA18	9 & 30	A6098HC6 Explosion Proof - With Arm 287P2	34
		13	6098E9 Without Oil Pot - With Arm 287P3, with Weight	35
	90YA18	13 & 30	A6098HC9 Moisture Proof - With Arm 287P3, with Weight	35
	90YA18	13 & 30	A6098HC13 Explosion Proof - With Arm 287P3, with Weight	35
		14	6098E10 Without Oil Pot - With Arm 287P4, with Weight	34
	90YA18	14 & 30	A6098HC10 Moisture Proof - With Arm 287P4, with Weight	34
	90YA18	14 & 30	A6098HC14 Explosion Proof - With Arm 287P4, with Weight	34
		10 & 27	6098E13 With Oil Pot - With Arm 387P3, with Weight	35
		9 & 27	6098E14 With Oil Pot - With Arm 287P4, with Weight	34

Returning Spring at Location		See Fig. No.	M.L. and Name of Switch		Uses Contact Box Page 17, See Fig.
R Part No. of Spring	L Part No. of Spring				
<i>GATE TYPE SWITCH - DOUBLE POLE MAKING</i>					
		13	6098E11	Without Oil Pot - With Arm 287P3, with Weight	39
	90YA18	13 & 30	A6098HC11	Moisture Proof - With Arm 287P3, with Weight	39
	90YA18	13 & 30	A6098HC15	Explosion Proof - With Arm 287P3, with Weight	39
		14	6098E12	Without Oil Pot - with Arm 287P4, with Weight	38
90YA18		14 & 30	A6098HC12	Moisture Proof - With Arm 287P4, with Weight	38
90YA18		14 & 30	A6098HC16	Explosion Proof - With Arm 287P4, with Weight	38
		10	6098E5	Without Oil Pot - With Arm 287P1	39
		10 & 27	6098E7	With Oil Pot - With Arm 287P1	39
90YA18		10 & 30	A6098HC3	Moisture Proof - With Arm 287P1	39
	90YA18	10 & 30	A6098HC7	Explosion Proof - With Arm 287P1	39
		9	6098E6	Without Oil Pot - With Arm 287P2	38
		9 & 27	6098E8	With Oil Pot - With Arm 287P2	38
90YA18		9 & 30	A6098HC4	Moisture Proof - With Arm 287P2	38
90YA18		9 & 30	A6098HC8	Explosion Proof - With Arm 287P2	38
		10 & 27	6098E15	With Oil Pot - With Arm 287P3, with Weight	39
		9 & 27	6098E16	With Oil Pot - With Arm 287P4, with Weight	38
<i>INTERLOCK SWITCH, BI-PARTING DOOR - DOUBLE POLE MAKING AND BREAKING</i>					
90YA18		21	6098BJ1	Without Oil Pot - With Arm 287AM3	34
	90YA18	22	6098BJ2	Without Oil Pot - With Arm 287AM4	35
		21	6098BJ7	Without Oil Pot - With Arm 287AM7	34
		22	6098BJ8	Without Oil Pot - With Arm 287AM8	35
<i>INTERLOCK SWITCH, BI-PARTING DOOR - DOUBLE POLE MAKING</i>					
		21	6098BJ5	Without Oil Pot - With Arm 287AM3	38
		22	6098BJ6	Without Oil Pot - With Arm 287AM4	39
		21	6098BJ11	Without Oil Pot - With Arm 287AM3	38
		22	6098BJ12	Without Oil Pot - With Arm 287AM4	39
<i>INTERLOCK SWITCH, BI-PARTING DOOR - SINGLE POLE MAKING AND BREAKING</i>					
90YA18		21	6098BJ3	Without Oil Pot - With Arm 287AM1	40
	90YA18	22	6098BJ4	Without Oil Pot - With Arm 287AM2	40
		21	6098BJ9	Without Oil Pot - With Arm 287AM5	40
		22	6098BJ10	Without Oil Pot - With Arm 287AM6	40
<i>LIMIT TYPE SWITCH - SINGLE POLE MAKING</i>					
90YA18		4	A6098B1	Without Oil Pot - With Arm 287F4, with Roller	34
90YA18		4 & 27	A6098B2	With Oil Pot - With Arm 287CH1, with Roller	34
90YA18		4 & 30	A6098FC1	Moisture Proof - With Arm 287F4, with Roller	34
90YA18		4 & 30	A6098FC5	Explosion Proof - With Arm 287F4, with Roller	34
	90YA18	3	A6098B9	Without Oil Pot - With Arm 287F8, with Roller	35
	90YA18	3 & 27	A6098B10	With Oil Pot - With Arm 287CH2, with Roller	35
	90YA18	3 & 30	A6098FC9	Moisture Proof - With Arm 287F8, with Roller	35
	90YA18	3 & 33	A6098FC13	Explosion Proof - With Arm 287F8, with Roller	35
	90YA18	4	A6098B29	Without Oil Pot - With Arm 287CH1, with Roller	34
	90YA18	3	A6098B30	Without Oil Pot - With Arm 287CH2, with Roller	35
<i>LIMIT TYPE SWITCH - DOUBLE POLE MAKING</i>					
90YA18		4	A6098B5	Without Oil Pot - With Arm 287F4, with Roller	38
90YA18		4 & 27	A6098B6	With Oil Pot - With Arm 287CH1, with Roller	38
90YA18		4 & 30	A6098FC3	Moisture Proof - With Arm 287F4, with Roller	38
90YA18		4 & 30	A6098FC7	Explosion Proof - With Arm 287F4, with Roller	38
	90YA18	3	A6098B13	Without Oil Pot - With Arm 287F8, with Roller	39
	90YA18	3 & 27	A6098B14	With Oil Pot - With Arm 287CH2, with Roller	39
	90YA18	3 & 30	A6098FC11	Moisture Proof - With Arm 287F8, with Roller	39
	90YA18	3 & 30	A6098FC15	Explosion Proof - With Arm 287F8, with Roller	39
	90YA18	4	A6098B33	Without Oil Pot - With Arm 287CH1, with Roller	39
	90YA18	3	A6098B34	Without Oil Pot - With Arm 287CH2, with Roller	39

Description of Switches

05-6098

Returning Spring at Location		See Fig. No.	M.L. and Name of Switch		Uses Contact Box Page 17, See Fig.
R Part No. of Spring	L				
<i>LIMIT TYPE SWITCH - SINGLE POLE BREAKING</i>					
90YA18		2	A6098B3	Without Oil Pot - With Arm 287F2, with Roller	35
90YA18		2 & 27	A6098B4	With Oil Pot - With Arm 287CH3, with Roller	35
90HB8		2 & 30	A6098FC2	Moisture Proof - With Arm 287F2, with Roller	35
90HB8		2 & 30	A6098FC6	Explosion Proof - With Arm 287F2, with Roller	35
	90YA18	1	A6098B11	Without Oil Pot - With Arm 287F6, with Roller	34
	90YA18	1 & 27	A6098B12	With Oil Pot - With Arm 287CH4, with Roller	34
	90HB8	1 & 30	A6098FC10	Moisture Proof - With Arm 287F6, with Roller	34
	90HB8	1 & 30	A6098FC14	Explosion Proof - With Arm 287F6, with Roller	34
		7	6098BC1	Without Oil Pot - With Arm 287BA3, with Pin	34
90YA18		8	6098BC2	Without Oil Pot - With Arm 287BA3, with Pin	35
90YA18		2	A6098B23	Without Oil Pot - With Arm 287F19, with Roller	35
	90YA18	1	A6098B24	Without Oil Pot - With Arm 287F20, with Roller	34
90YA18		2	A6098B31	Without Oil Pot - With Arm 287CH3, with Roller	34
	90YA18	1	A6098B32	Without Oil Pot - With Arm 287CH4, with Roller	35
<i>LIMIT TYPE SWITCH - SINGLE POLE MAKING AND BREAKING, WITH AUX. CONTACTS</i>					
90YA18		4	A6098B17	Without Oil Pot - With Arm 287CH3, with Roller	33+
	90YA18	3	A6098B18	Without Oil Pot - With Arm 287CH3, with Roller	33+
90YA18		4	A6098B21	Without Oil Pot - With Arm 287CH1, with Roller	33+
	90YA18	3	A6098B22	Without Oil Pot - With Arm 287CH2, with Roller	33+
<i>LIMIT TYPE SWITCH - DOUBLE POLE BREAKING</i>					
90YA18		2	A6098B7	Without Oil Pot - With Arm 287F2, with Roller	39
90YA18		2 & 27	A6098B8	With Oil Pot - With Arm 287CH3, with Roller	39
90HB8		2 & 30	A6098FC4	Moisture Proof - With Arm 287F2, with Roller	39
90HB8		2 & 30	A6098FC8	Explosion Proof - With Arm 287F2, with Roller	39
	90YA18	1	A6098B15	Without Oil Pot - With Arm 287F6, with Roller	38
	90YA18	1 & 27	A6098B16	With Oil Pot - With Arm 287CH4, with Roller	38
	90HB8	1 & 30	A6098FC12	Moisture Proof - With Arm 287F6, with Roller	38
	90HB8	1 & 30	A6098FC16	Explosion Proof - With Arm 287F6, with Roller	38
	90YA18	5	6098BC3	Without Oil Pot - With Arm 287BA4, with Roller	38
90YA18		6	6098BC4	Without Oil Pot - With Arm 287BA4, with Roller	39
	90YA18	7	6098BC5	Without Oil Pot - With Arm 287BA3, with Pin	38
90YA18		8	6098BC6	Without Oil Pot - With Arm 287BA3, with Pin	39
90YA18		2 & 46	A6098B19	Without Oil Pot - With Arm 6098FH1	39
	90YA18	1 & 47	A6098B20	Without Oil Pot - With Arm 6098FH2	38
90YA18		2	A6098B35	Without Oil Pot - With Arm 287CH3, with Roller	39
	90YA18	1	A6098B36	Without Oil Pot - With Arm 287CH4, with Roller	38
<i>LIMIT TYPE SWITCH - DOUBLE POLE BREAKING AND MAKING</i>					
	90YA18	12 & 30	6098CE1	Moisture Proof - With Arm A287E2, with Roller	40
90YA18		12 & 30	6098CE2	Moisture Proof - With Arm A287E2, with Roller	40
	90YA18	12 & 30	6098CE3	Explosion Proof - With Arm A287E2, with Roller	40
90YA18		12 & 30	6098CE4	Explosion Proof - With Arm A287E2, with Roller	40
<i>LIMIT TYPE SWITCH - DOUBLE POLE SINGLE THROW WITH AUX. CONTACTS</i>					
		12	A6098A3	Without Oil Pot - With Arm A287E2, with Roller	44
		12	A6098A4	Without Oil Pot - With Arm A287E2, with Roller	43
<i>PUMP SWITCH, DIRECT DISPLACEMENT - SINGLE POLE MAKING AND BREAKING (SAN FRANCISCO DESIGN)</i>					
90YA18		4	SF6012F1	Without Oil Pot - With Arm 287F4, with Roller	*
<i>SAFETY SHOE TYPE SWITCH - SINGLE POLE MAKING</i>					
90YA18		16	6098ZA3	Without Oil Pot - With Arm 287W2	34
90YA18		16	6098ZA4	Without Oil Pot - With Arm 287W3	35
90YA18		4	A6098B25	Without Oil Pot - With Arm 287F2, with Roller	33+++
	90YA18	3	A6098B26	Without Oil Pot - With Arm 287F6, with Roller	33++
90YA18		3	A6098B27	Without Oil Pot - With Arm 287CH3, with Roller	33++
	90YA18	3	A6098B28	Without Oil Pot - With Arm 287CH4, with Roller	33+++
<i>SAFETY SHOE TYPE SWITCH - SINGLE POLE BREAKING</i>					
90YA18		15	6098ZA1	Without Oil Pot - With Arm 287W1	35
	90YA18	16	6098ZA2	Without Oil Pot - With Arm 287W2	34

Returning Spring at Location		See Fig. No.	M.L. and Name of Switch	Uses Contact Box Page 17, See Fig.
R	L			
Part No. of Spring				
TRIPPER TYPE SWITCH - SINGLE POLE BREAKING				
90YA18		19	6098D1 Without Oil Pot - With Arm 287H1 and Tripper 446B2	34
90YA18		19 & 28	6098D2 With Oil Pot - With Arm 287H1 and Tripper 446B2	34
90YA18		19 & 31	A6098GC1 Moisture Proof - With Arm 287H1 and Tripper 446B2	34
90YA18		19 & 31	A6098GC3 Explosion Proof - With Arm 287H1 and Tripper 446B2	34
	90YA18	20	6098D3 Without Oil Pot - With Arm 287H2 and Tripper 446B2	35
	90YA18	20 & 29	6098D4 With Oil Pot - With Arm 287H2 and Tripper 446B2	35
	90YA18	20 & 32	A6098GC2 Moisture Proof - With Arm 287H2 and Tripper 446B2	35
	90YA18	20 & 32	A6098GC4 Explosion Proof - With Arm 287H2 and Tripper 446B2	35
TRIPPER TYPE SWITCH - DOUBLE POLE BREAKING				
90YA18		19	6098D6 Without Oil Pot - With Arm 287H1 and Tripper 446B2	38
90YA18		19 & 31	A6098GC5 Moisture Proof - With Arm 287H1 and Tripper 446B2	38
90YA18		19 & 31	A6098GC7 Explosion Proof - With Arm 287H1 and Tripper 446B2	38
	90YA18	20	6098D5 Without Oil Pot - With Arm 287H2 and Tripper 446B2	39
	90YA18	20 & 32	A6098GC6 Moisture Proof - With Arm 287H2 and Tripper 446B2	39
	90YA18	20 & 32	A6098GC8 Explosion Proof - With Arm 287H2 and Tripper 446B2	39

*Same as 6151B1 except the Base A306G2 instead of A306G5.
 ++Same as Fig. 33 except the base contact A306G10 instead of A306G7
 +++Same as Fig. 33 except base contact A306G11 instead of A306G7

List of Parts

Fig. No.	Ref. No.	Part or ML No.	Description	Material List and Quantity														
				6098C								6098D						
				1	2	3	4	5	6	7	8	1	2	3	4	5	6	
19	55	287H1	Arm Switch, with Pin	-	-	-	-	-	-	-	-	-	1	1	-	-	-	1
20	56	287H2	Arm Switch, with Pin	-	-	-	-	-	-	-	-	-	-	-	1	1	1	-
17	57	287J3	Arm Switch, with Roller	1	1	-	-	1	1	-	-	-	-	-	-	-	-	-
18	58	287J4	Arm Switch, with Roller	-	-	1	1	-	-	1	1	-	-	-	-	-	-	-
-	-	6151B1	Box & Contacts (for details see p. 17, Fig. 34)	-	-	1	1	-	-	-	-	-	1	1	-	-	-	-
-	-	6151B2	Box & Contacts (for details see p. 17, Fig. 35)	1	1	-	-	-	-	-	-	-	-	-	1	1	-	-
-	-	6151C1	Box & Contacts (for details see p. 17, Fig. 38)	-	-	-	-	-	-	-	1	1	-	-	-	-	-	1
-	-	6151D1	Box & Contacts (for details see p. 17, Fig. 39)	-	-	-	1	-	1	-	-	-	-	-	-	-	1	-
-	-	320T1+	Bumper, rubber (for stop pin on box)	-	-	-	-	-	-	-	-	-	-	-	-	-	-	-
17	78	A346MB5	Cover, Switch Box with Pin, Lining & Cam	1	-	-	-	1	-	-	-	-	-	-	-	-	-	-
18	79	A346MB6	Cover, Switch Box with Pin, Lining & Cam	-	-	1	-	-	-	1	-	-	-	-	-	-	-	-
19	80	A346MB7	Cover, Switch Box with Pin, Lining & Tripper	-	-	-	-	-	-	-	-	-	1	-	-	-	-	1
20	81	A346MB8	Cover, Switch Box with Pin, Lining, & Tripper	-	-	-	-	-	-	-	-	-	-	-	1	-	-	1
28	-	346BC3	Cover, Oil Tight Switch Box with Cam	-	1	-	-	-	1	-	-	-	-	-	-	-	-	-
29	-	346BC4	Cover, Oil Tight Switch Box with Cam	-	-	-	1	-	-	-	1	-	-	-	-	-	-	-
28	-	346BC5	Cover, Oil Tight Switch Box with Tripper	-	-	-	-	-	-	-	-	-	-	1	-	-	-	-
29	-	346BC6	Cover, Oil Tight Switch Box with Tripper	-	-	-	-	-	-	-	-	-	-	-	-	1	-	-
19, 20	98*	907A18	Spring, Movable Contact Base Returning (used at location given in "Description of Switches")	-	-	-	-	-	-	-	-	-	1	1	1	1	1	1

Fig. No.	Ref. No.	Part or ML No.	Description	Material List and Quantity															
				6098E															
				1	2	3	4	5	6	7	8	9	10	11	12	13	14	15	16
10	59	287P1	Arm Switch	1	-	1	-	1	-	1	-	1	-	-	-	-	-	-	
9	60	287P2	Arm Switch	-	1	-	1	-	1	-	1	-	-	-	-	-	-	-	
13	61	287P3	Arm Switch, with Weight	-	-	-	-	-	-	-	-	1	-	1	-	1	-	1	
14	62	287P4	Arm Switch, with Weight	-	1	-	1	-	-	-	-	-	1	-	1	-	1	-	
-	-	6151B1	Box & Contacts (for details see p. 17, Fig. 35)	1	-	1	-	-	-	-	-	1	-	-	-	1	-	-	
-	-	6151B2	Box & Contacts (for details see p. 17, Fig. 35)	-	-	-	-	-	1	-	1	-	-	-	1	-	-	-	
-	-	6151C1	Box & Contacts (for details see p. 17, Fig. 38)	-	-	-	-	-	1	-	1	-	-	-	1	-	-	1	
-	-	6151D1	Box & Contacts (for details see p. 17, Fig. 39)	-	-	-	-	1	-	-	-	-	-	1	-	-	-	1	
-	-	320T1	Bumper, rubber (for stop pin on box)	-	-	-	-	-	-	-	-	-	-	-	-	-	-	-	
9, 10-14	77	A346MB1	Cover, Switch Box with Lining	1	1	-	-	1	1	-	-	1	1	1	1	-	-	-	
27	-	346BC2	Cover, Oil Tight Switch Box	-	-	1	1	-	-	1	1	-	-	-	-	1	1	1	

+ Not currently used, available for service replacement
 *Arrow indicates location, the part itself not showing in the illustration

List of Parts

05-6098

Fig. No	Ref. No.	Part or ML No.	Description	Material List and Quantity																		
				6098AL_			6098AS_	6098AY_								6098BC_						
				1	2	3	1	1	2	3	4	5	6	7	8	1	2	3	4	5	6	
17	57	287J3	Arm, Switch, with Roller	-	-	-	-	1	1	1	1	-	-	-	-	-	-	-	-	-	-	-
18	58	287J4	Arm, Switch, with Roller	-	-	-	-	-	-	-	-	1	1	1	1	-	-	-	-	-	-	-
7, 8	71	287BA3	Arm, Switch, with Pin	-	-	-	-	-	-	-	-	-	-	-	-	1	1	-	-	1	1	-
5, 6	72	287BA4	Arm, Switch, with Roller	-	-	-	-	-	-	-	-	-	-	-	-	-	1	1	-	-	-	-
25, 26	73	287BA5	Arm, Switch, with Pin	1	1	1	1	-	-	-	-	-	-	-	-	-	-	-	-	-	-	-
25	74	299HC2	Bar, Connecting	1	1	1	-	-	-	-	-	-	-	-	-	-	-	-	-	-	-	-
-	-	6151B1	Box & Contacts (for details, see p. 17, Fig. 34)	-	-	-	-	-	-	-	-	1	1	-	-	1	-	-	-	-	-	-
-	-	6151B2	Box & Contacts (for details, see p. 17, Fig. 35)	-	-	-	-	1	1	-	-	-	-	-	-	-	1	-	-	-	-	-
-	-	6151B3	Box & Contacts (for details, see p. 17, Fig. 36)	-	1	-	-	-	-	-	-	-	-	-	-	-	-	-	-	-	-	-
-	-	6151B4	Box & Contacts (for details, see p. 17, Fig. 37)	1	-	1	1	-	-	-	-	-	-	-	-	-	-	-	-	-	-	-
-	-	6151C1	Box & Contacts (for details, see p. 17, Fig. 38)	-	-	-	-	-	-	-	-	-	-	1	1	-	-	1	-	1	-	-
-	-	6151D1	Box & Contacts (for details, see p. 17, Fig. 39)	-	-	-	-	-	-	1	1	-	-	-	-	-	-	-	1	-	1	-
25	75	316KV2	Bracket, with Pin	1	1	1	-	-	-	-	-	-	-	-	-	-	-	-	-	-	-	-
26	76	316PY1	Bracket	-	-	-	1	-	-	-	-	-	-	-	-	-	-	-	-	-	-	-
-	-	320T1†	Bumper, rubber(for Stop Pin on Box)																			
-	-	334H1★	Bushing, rubber, 1/2" ID, 1" OD, 5/16" thick (for Outlet - moisture and explosion proof switches)	-	-	-	-	1	1	1	1	1	1	1	1	-	-	-	-	-	-	-
-	-	334H2★	Bushing, rubber, 11/16" ID, 1-3/16" OD, 5/16" thick (for Outlet - moisture and explosion proof switches)	-	-	-	-	2	2	2	2	2	2	2	2	-	-	-	-	-	-	-
5-8, 26	77	A346MB1	Cover, Switch Box, with Lining	-	-	-	1	-	-	-	-	-	-	-	-	1	1	1	1	1	1	1
25	82	A346MB10	Cover, Switch Box, with Lining	1	1	1	-	-	-	-	-	-	-	-	-	-	-	-	-	-	-	-
32	86	6368A4	Cover, Housing, with Cam	-	-	-	-	-	-	-	1	1	1	1	-	-	-	-	-	-	-	-
31	87	6368A5	Cover, Housing, with Cam	-	-	-	-	1	1	1	1	-	-	-	-	-	-	-	-	-	-	-
31, 32	88	376HA1	Gasket (for Moisture Proof Switches)	-	-	-	-	-	1	-	1	-	1	-	1	-	-	-	-	-	-	-
31, 32	89	A396PA1	Housing, Switch (for Moisture or Explosion Proof Switches)	-	-	-	-	1	1	1	1	1	1	1	1	-	-	-	-	-	-	-
31, 32	90	287CA1*	Lever, Switch (for Moisture or Explosion Proof Switches)	-	-	-	-	1	1	1	1	1	1	1	1	-	-	-	-	-	-	-
25	91	288AB1	Lever	2	2	1	-	-	-	-	-	-	-	-	-	-	-	-	-	-	-	-
25	92	288AB2	Lever (for 6098AL3 only)	-	-	1	-	-	-	-	-	-	-	-	-	-	-	-	-	-	-	-
26	93	432F1	Lug (Arm to Rod)	-	-	-	1	-	-	-	-	-	-	-	-	-	-	-	-	-	-	-
26	94	72AH2	Nut (for Rod)	-	-	-	1	-	-	-	-	-	-	-	-	-	-	-	-	-	-	-
25	95	79AA3	Pin, brass, 1/4" diam., 25/32" long (for Lever to Bar)	1	1	1	-	-	-	-	-	-	-	-	-	-	-	-	-	-	-	-
25	96	79AF1	Pin, brass, 1/4" diam., 1" long (for Lever to Bar)	1	1	1	-	-	-	-	-	-	-	-	-	-	-	-	-	-	-	-
26	97	96H29	Rod, 5/16" diam., 5-3/4" long (for Lug)	-	-	-	1	-	-	-	-	-	-	-	-	-	-	-	-	-	-	-
5-8, 25-26	98*	90YA18	Spring, Movable Contact Base Returning (used at location given in "Description of Switches")	1	1	1	1	-	-	-	-	-	-	-	-	1	1	1	1	1	1	1

Fig. No	Ref. No.	Part or ML No.	Description	Material List and Quantity																									
				6098BJ_												6098BZ_		6098CC		6098CE_				6098CM					
				1	2	3	4	5	6	7	8	9	10	11	12	1	2	1	2	1	2	3	4	1	2				
11, 12	50	A287E2	Arm, Switch, w/Roller	-	-	-	-	-	-	-	-	-	-	-	-	-	-	-	1	1	1	1	1	1	-	-			
21	65	287AM1	Arm, Switch, w/2 Pins	-	-	1	-	-	-	-	-	-	-	-	-	-	-	-	-	-	-	-	-	-	-	-			
22	66	287AM2	Arm, Switch, w/2 Pins	-	-	-	1	-	-	-	-	-	-	-	-	-	-	-	-	-	-	-	-	-	-	-			
21	67	287AM3	Arm, Switch, w/Pin	1	-	-	-	1	-	-	-	-	-	1	-	-	-	-	-	-	-	-	-	-	-	-			
22	68	287AM4	Arm, Switch, w/Pin	-	1	-	-	-	1	-	-	-	-	-	-	1	-	-	-	-	-	-	-	-	-	-			
21▲	65	287AM5	Arm, Switch, w/2 Pins & Link	-	-	-	-	-	-	-	-	-	1	-	-	-	-	-	-	-	-	-	-	-	-				
22▲	66	287AM6	Arm, Switch, w/2 Pins & Link	-	-	-	-	-	-	-	-	-	-	1	-	-	-	-	-	-	-	-	-	-	-				
21▲	67	287AM7	Arm, Switch, w/Pin & Link	-	-	-	-	-	-	1	-	-	-	-	-	-	-	-	-	-	-	-	-	-	-				
22▲	68	287AM8	Arm, Switch, w/Pin & Link	-	-	-	-	-	-	-	1	-	-	-	-	-	-	-	-	-	-	-	-	-	-				
23	69	287AB1	Arm, Switch	-	-	-	-	-	-	-	-	-	-	-	-	-	-	-	-	-	-	-	-	-	1				
24	70	287AB2	Arm, Switch	-	-	-	-	-	-	-	-	-	-	-	-	-	-	-	-	-	-	-	-	-	1				
8	73	287BA5	Arm, Switch, w/Pin	-	-	-	-	-	-	-	-	-	-	-	-	-	-	1	1	-	-	-	-	-	-				
-	-	A6151A1	Box & Contacts (for details, see p. 17, Fig. 33)	-	-	-	-	-	-	-	-	-	-	-	-	-	-	-	1	1	-	-	-	-	-	-			
-	-	6151B1	Box & Contacts (for details, see p. 17, Fig. 34)	1	-	-	-	-	-	1	-	-	-	-	-	-	-	-	-	-	-	-	-	-	-				
-	-	6151B2	Box & Contacts (for details, see p. 17, Fig. 35)	-	1	-	-	-	-	-	1	-	-	-	-	-	-	-	-	-	-	-	-	-	-				
-	-	6151B4	Box & Contacts (for details, see p. 17, Fig. 37)	-	-	-	-	-	-	-	-	-	-	-	-	-	1	1	-	-	-	-	-	-					
-	-	6151C1	Box & Contacts (for details, see p. 17, Fig. 38)	-	-	-	-	1	-	-	-	-	-	-	-	1	-	-	-	-	-	-	-	-	-				
-	-	6151D1	Box & Contacts (for details, see p. 17, Fig. 39)	-	-	-	-	-	1	-	-	-	-	-	1	-	-	-	-	-	-	-	-	-	-				
-	-	6151E1	Box & Contacts (for details, see p. 17, Fig. 40)	-	-	1	1	-	-	-	-	-	1	1	-	-	-	-	-	-	-	-	-	-	-				
-	-	6151F1	Box & Contacts (for details, see p. 17, Fig. 41)	-	-	-	-	-	-	-	-	-	-	-	-	-	-	-	-	-	-	-	-	-	1				
-	-	6151F2	Box & Contacts (for details, see p. 17, Fig. 42)	-	-	-	-	-	-	-	-	-	-	-	-	-	-	-	-	-	-	-	-	-	1				
-	-	320T1†	Bumper, rubber (for Stop Pin in Box)	-	-	-	-	-	-	-	-	-	-	-	-	-	-	-	-	-	-	-	-	-	-				
-	-	334H1★	Bushing, rubber, 1/2" ID, 1" OD, 5/16" thick (for outlet moisture and explosion proof switches)	-	-	-	-	-	-	-	-	-	-	-	-	-	-	1	1	1	1	1	1	1	1				
-	-	334H1★	Bushing, rubber, 11/16" ID, 1-3/16" OD, 5/16" thick (for outlet, moisture and explosion proof switches)	-	-	-	-	-	-	-	-	-	-	-	-	-	-	-	2	2	2	2	2	2	2	2			
21-24	77	A346MB1	Cover, Switch Box w/Lining	1	1	1	1	1	1	1	1	1	1	1	1	1	1	-	-	-	-	-	-	-	1	1			
30	83	6368A1	Cover, Housing (for Moisture or Explosion Proof Housing)	-	-	-	-	-	-	-	-	-	-	-	-	-	-	1	1	1	1	1	1	1	1				
30	88	376HA1	Gasket (for moisture or explosion proof switches)	-	-	-	-	-	-	-	-	-	-	-	-	-	-	-	1	1	-	-	-	-	-				
30	89	A396PA1	Housing, Switch (for moisture or explosion proof switches)	-	-	-	-	-	-	-	-	-	-	-	-	-	-	1	1	1	1	1	1	1	1				
30	90*	287CA1	Lever, Switch (for moisture or explosion proof switches)	-	-	-	-	-	-	-	-	-	-	-	-	-	-	1	1	1	1	1	1	1	1				
8	98*	90HB8	Spring, Movable Contact Base Returning (used at location given in "Description of Switches")	-	-	-	-	-	-	-	-	-	-	-	-	-	-	1	1	-	-	-	-	-	-				
12, 21-24	98*	90YA18	Spring, Movable Contact Base Returning (used at location given in "Description of Switches")	1	1	1	1	-	-	-	-	-	-	-	-	-	-	-	-	-	-	-	-	1	1	1	1	1	1

*Arrow indicates location, the parts themselves not showing in the illustration.

★Not illustrated.

†Not currently used, available for service replacement when required.

▲Similar to the above Fig No. illustration except for Link which is not shown.

List of Parts

05-6098

Fig. No	Ref. No.	Part or ML No.	Description	Material List and Quantity																SF6012F_	
				A6098HC_																	
				1	2	3	4	5	6	7	8	9	10	11	12	13	14	15	16	1	
4	52	287F4	Arm, Switch, w/Roller	-	-	-	-	-	-	-	-	-	-	-	-	-	-	-	-	-	1
10	59	287P1	Arm, Switch	1	-	1	-	1	-	1	-	-	-	-	-	-	-	-	-	-	-
9	60	287P2	Arm, Switch	-	1	-	1	-	1	-	1	-	-	-	-	-	-	-	-	-	-
13	61	287P3	Arm, Switch, w/Weight	-	-	-	-	-	-	-	-	1	-	1	-	1	-	1	-	-	-
14	62	287P4	Arm, Switch, w/Weight	-	-	-	-	-	-	-	-	-	1	-	1	-	1	-	1	-	-
-	-	6151B1	Box & Contacts (for details, see p. 17, Fig. 34)	-	1	-	-	-	1	-	-	-	1	-	-	-	1	-	-	-	1▲
-	-	6151B2	Box & Contacts (for details, see p. 17, Fig. 35)	1	-	-	-	1	-	-	-	1	-	-	-	1	-	-	-	-	-
-	-	6151C1	Box & Contacts (for details, see p. 17, Fig. 38)	-	-	-	1	-	-	-	1	-	-	-	1	-	-	-	1	-	-
-	-	6151D1	Box & Contacts (for details, see p. 17, Fig. 39)	-	-	1	-	-	-	1	-	-	-	1	-	-	-	1	-	-	-
-	-	320T1†	Bumper, rubber (for Stop Pin on box)																		
-	-	334H1★	Bushing, rubber, 1/2" ID, 1" OD, 5/16" thick (for moisture and explosion proof switches)	1	1	1	1	1	1	1	1	1	1	1	1	1	1	1	1	1	1
-	-	334H2★	Bushing, rubber, 11/16" ID, 1-3/16" OD, 5/16" thick (for moisture and explosion proof switches)	2	2	2	2	2	2	2	2	2	2	2	2	2	2	2	2	2	2
4	77	A346MB1	Cover, Switch Box, w/Lining	-	-	-	-	-	-	-	-	-	-	-	-	-	-	-	-	-	1
30	83	636A1	Cover, Housing	1	1	1	1	1	1	1	1	1	1	1	1	1	1	1	1	1	1
30	88	376HA1	Gasket (for moisture proof switches)	1	1	1	1	-	-	-	-	1	1	1	1	-	-	-	-	-	1
30	89	A396PA1	Housing, Switch	1	1	1	1	1	1	1	1	1	1	1	1	1	1	1	1	1	1
30	90*	287CA1	Lever, Switch	1	1	1	1	1	1	1	1	1	1	1	1	1	1	1	1	1	1
4, 9-14	98*	90YA18	Spring, Movable Base Returning (used at location given in "Description of Switches")	1	1	1	1	1	1	1	1	1	1	1	1	1	1	1	1	1	1

▲ San Francisco removes base #A306G5 and replaces it with base A306G2.
 * Arrow indicates location, the parts themselves not showing in the illustration.
 ★ Not illustrated.
 † Not currently used, available for service replacement, when required.

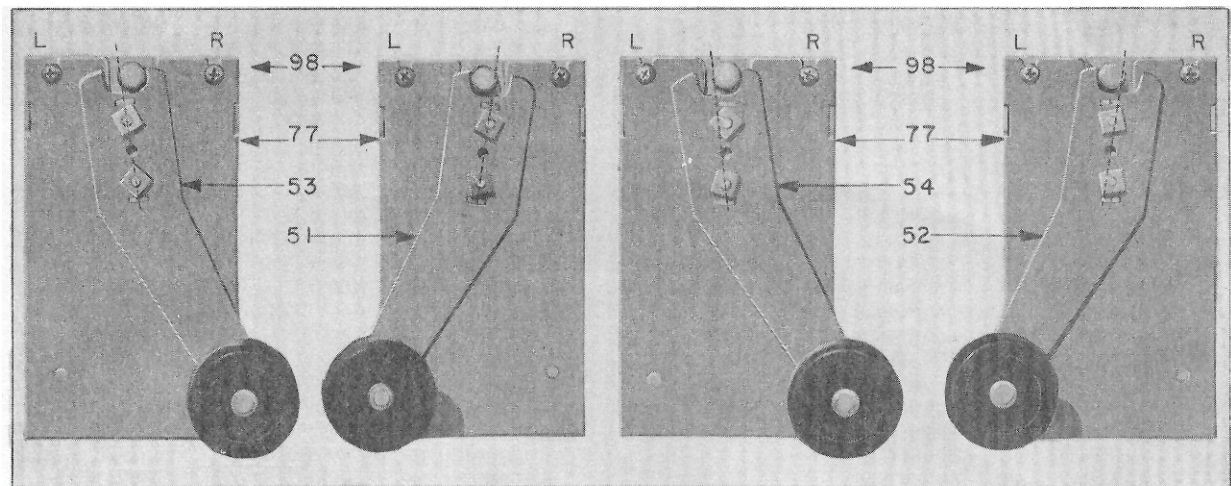


FIG. 1
Breaking

FIG. 2
Breaking

FIG. 3
Making

FIG. 4
Making

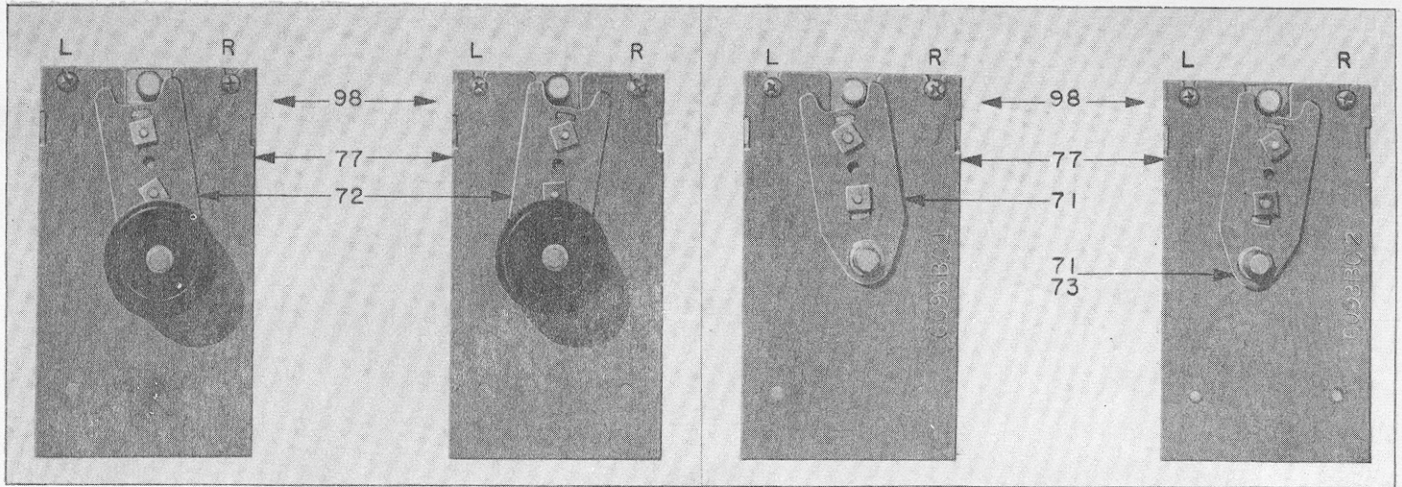


FIG. 5
Breaking

FIG. 6
Breaking

FIG. 7
Breaking

FIG. 8
Breaking

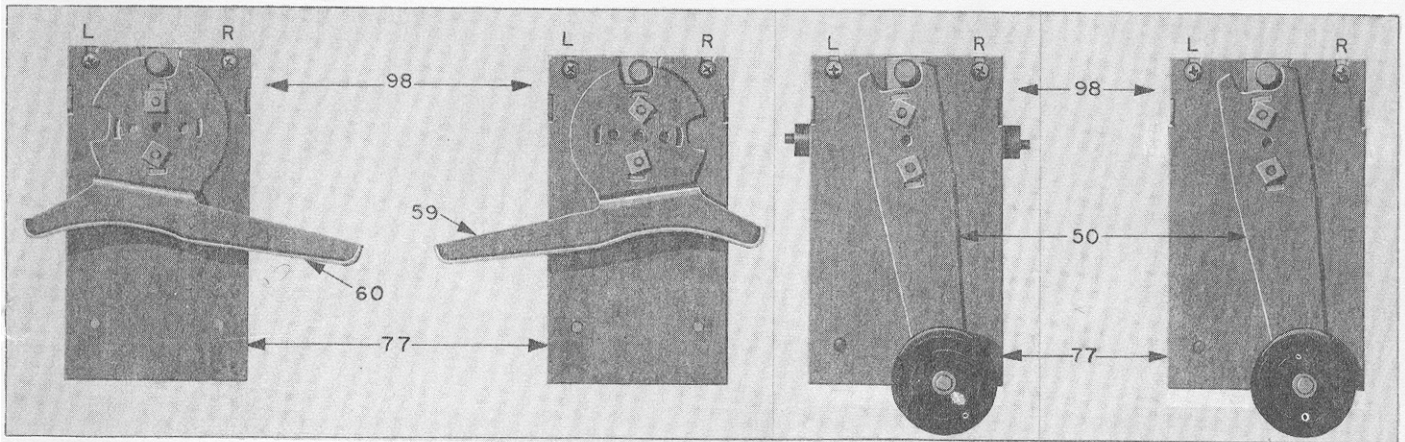


FIG. 9
Making

FIG. 10
Making

FIG. 11
Floor Stop Type Breaking and Making

FIG. 12
Breaking and Making

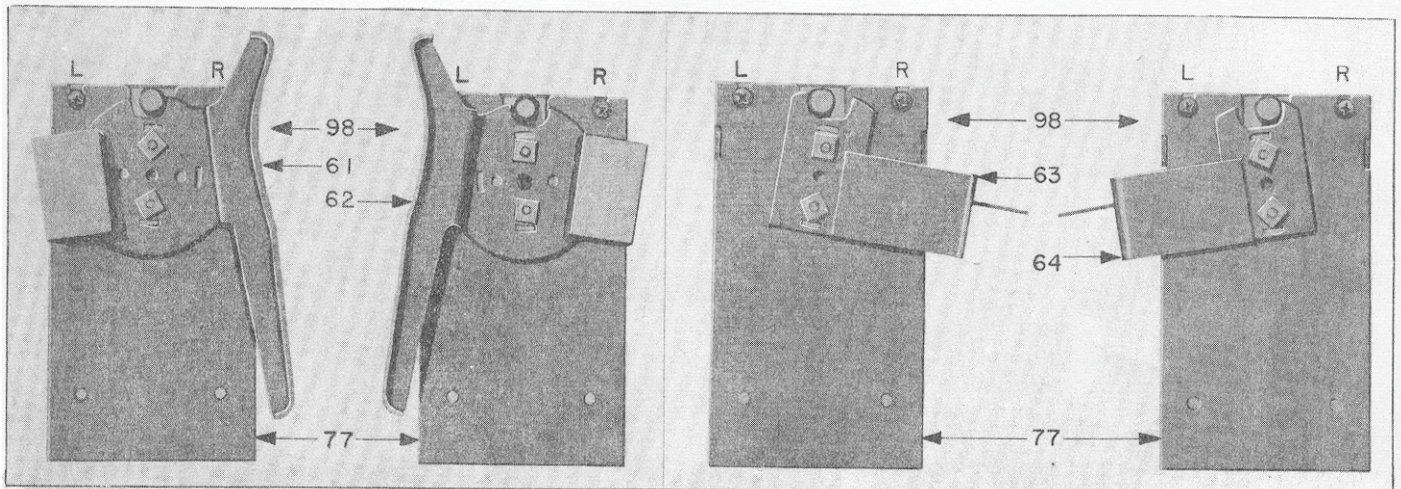


FIG. 13
Making

FIG. 14
Making

FIG. 15
Breaking

FIG. 16
Breaking

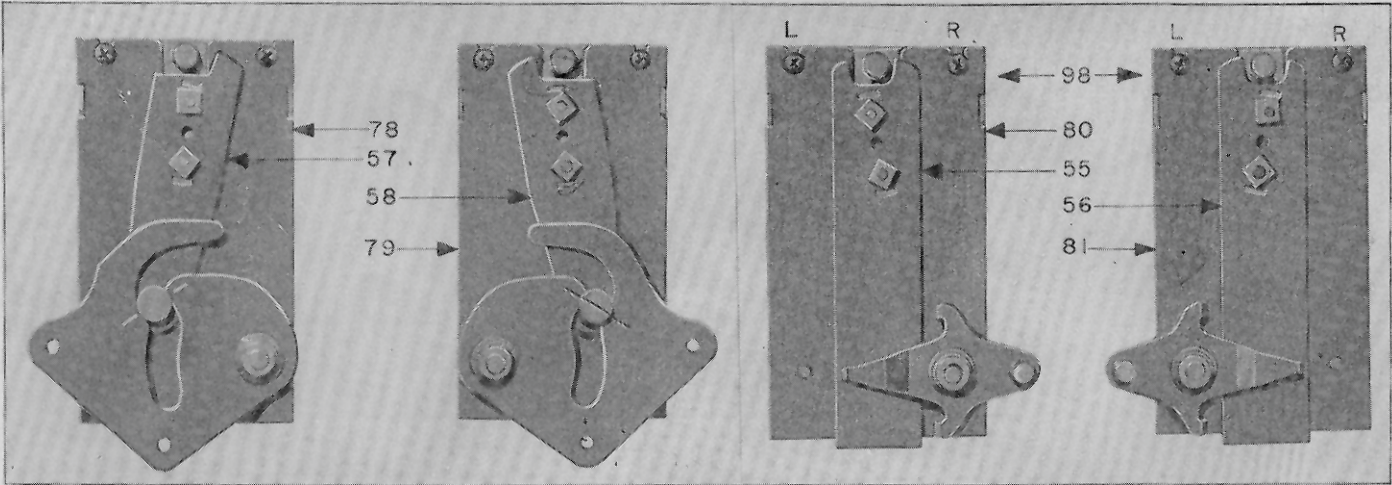


FIG. 17
Breaking

FIG. 18
Breaking

FIG. 19
Breaking

FIG. 20
Breaking

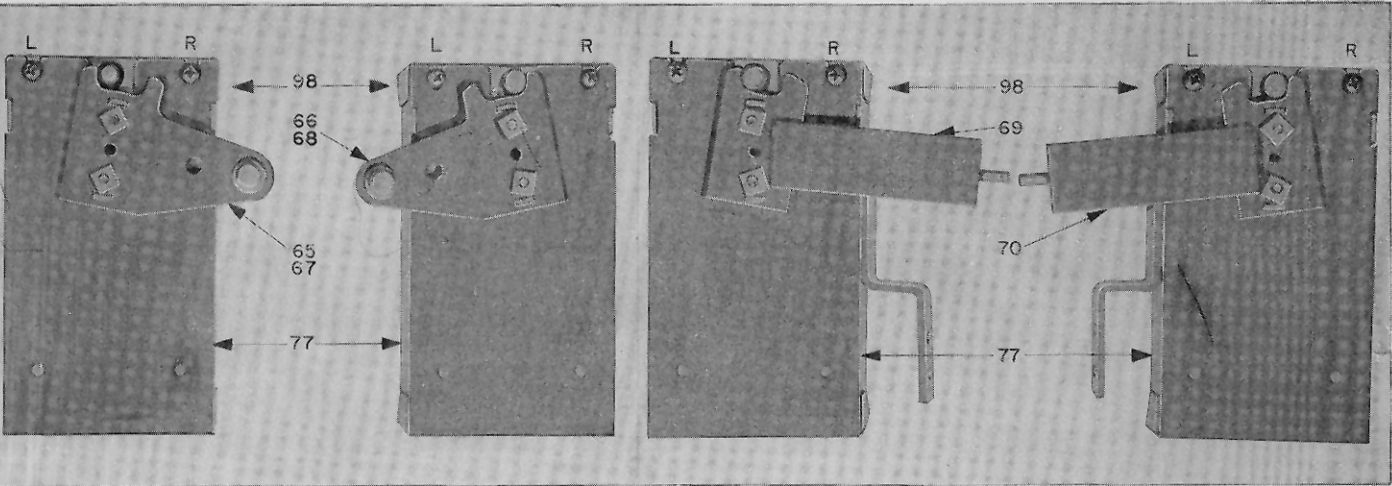


FIG. 21
Breaking

FIG. 22
Breaking

FIG. 23
Breaking

FIG. 24
Breaking

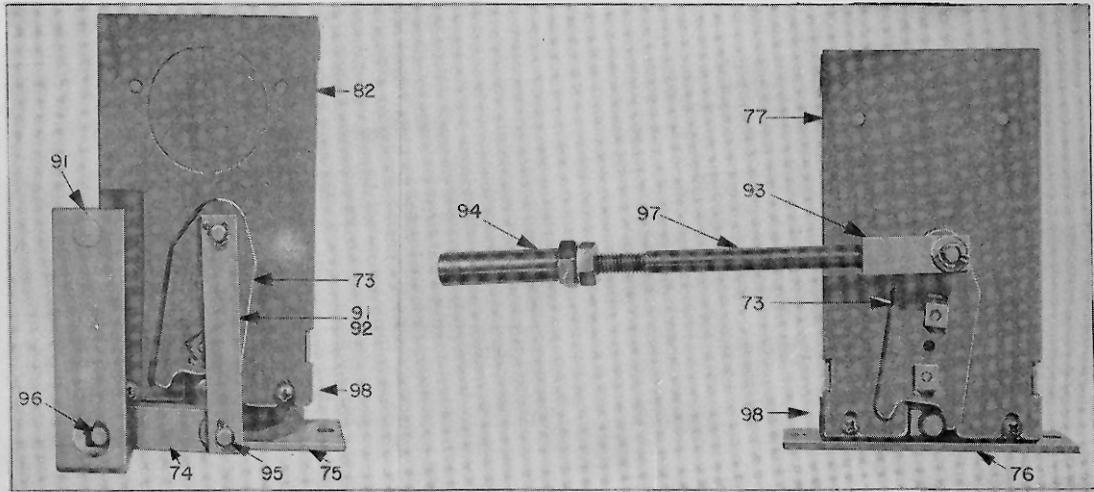


FIG. 25
Making or Breaking

FIG. 26
Breaking

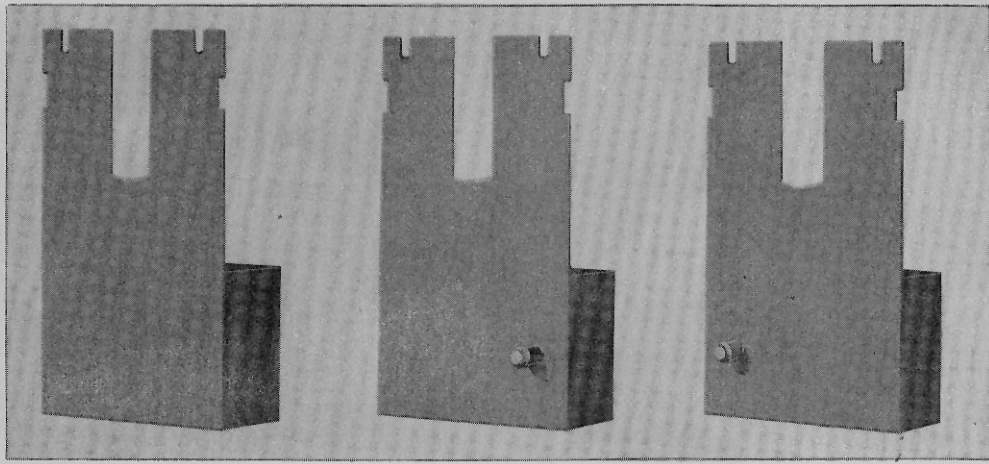


FIG. 27

FIG. 28

FIG. 29

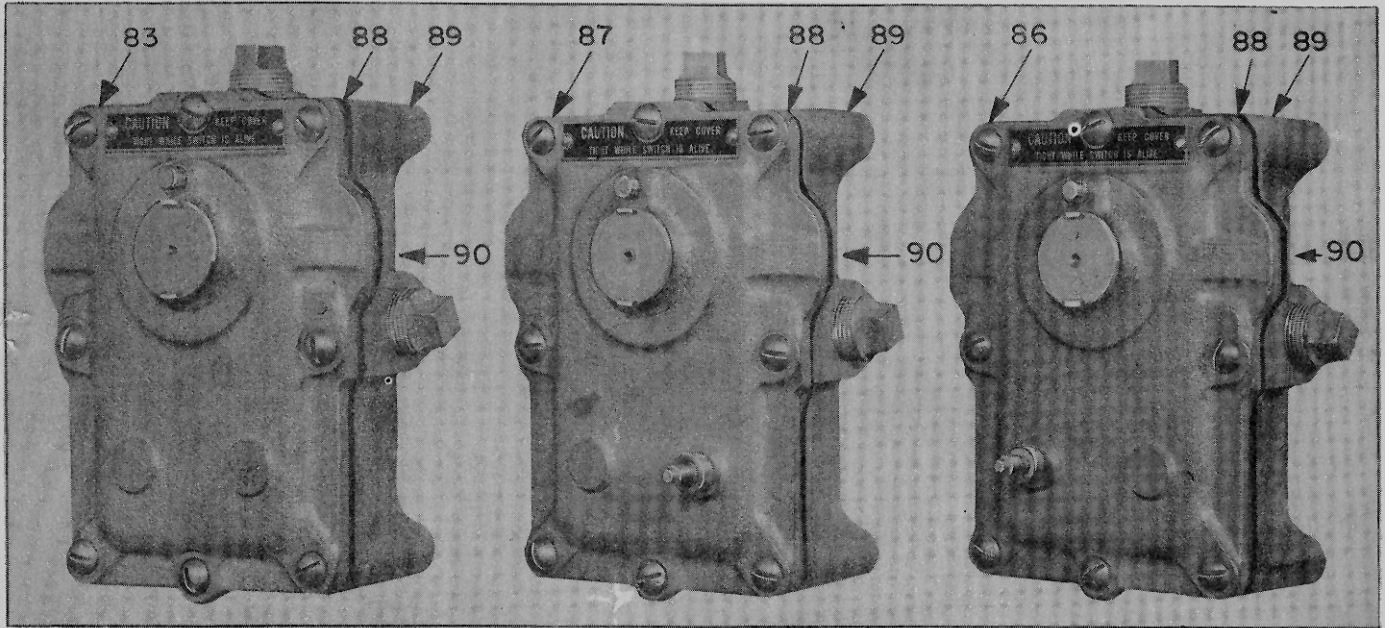


FIG. 30

FIG. 31

FIG. 32

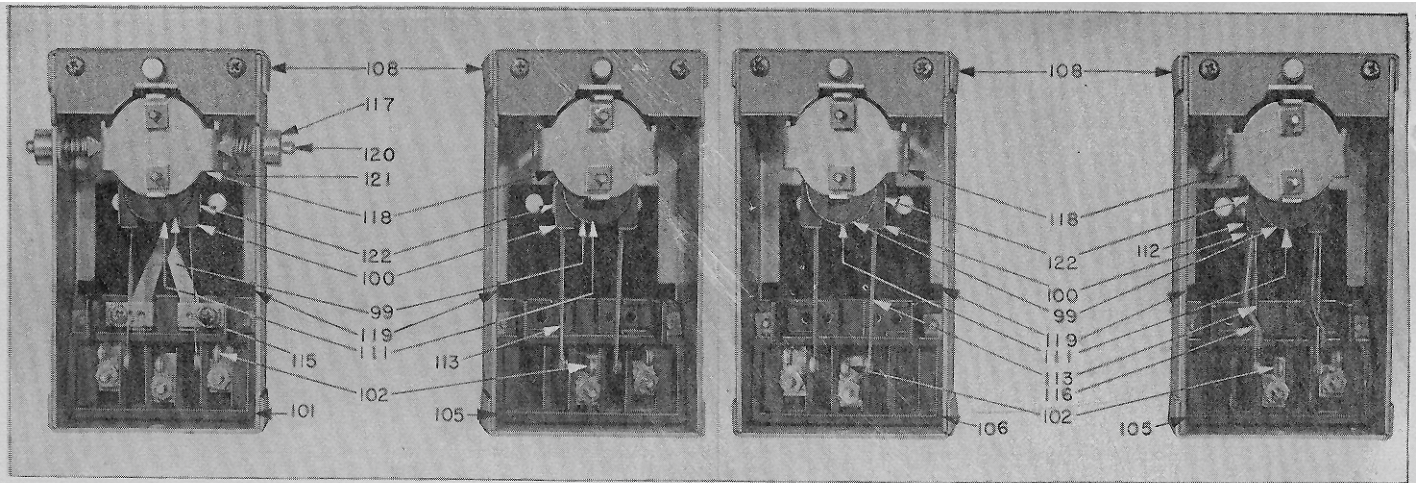


FIG. 33

FIG. 34

FIG. 35

FIG. 36

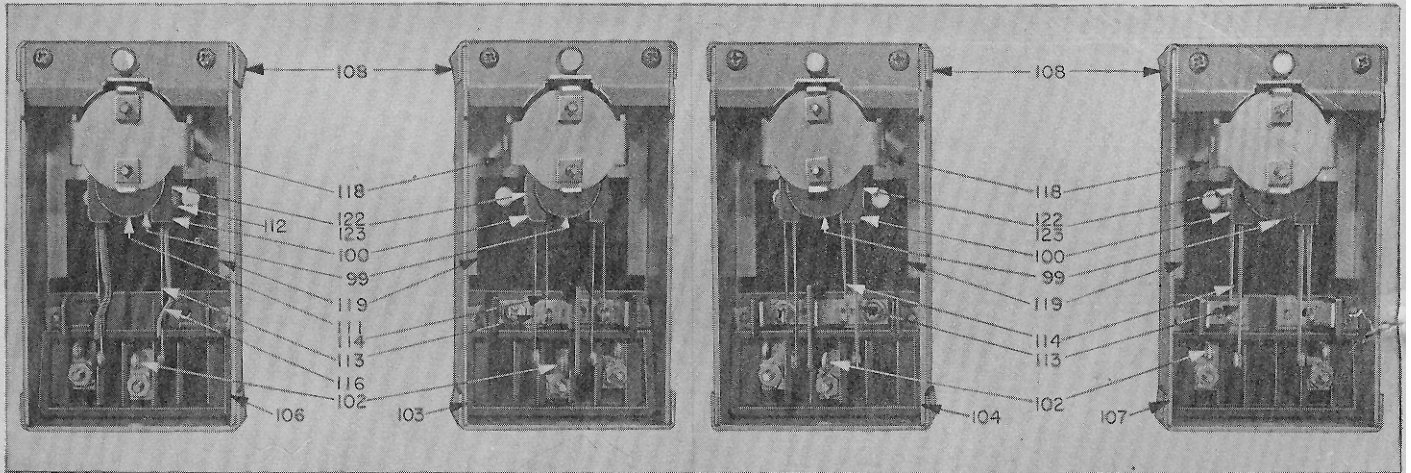


FIG. 37

FIG. 38

FIG. 39

FIG. 40

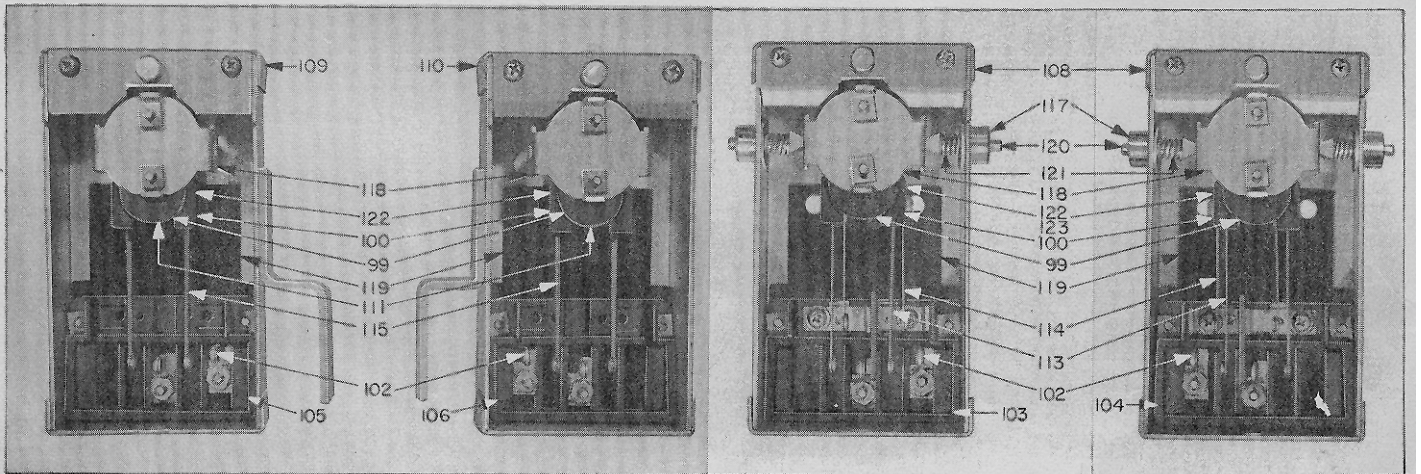


FIG. 41

FIG. 42

FIG. 43

FIG. 44

Description of 6151 Contact Boxes

Fig. 33	ML A6151A1:	Single Pole, Double Throw, with Aux. Contact	Fig. 39	ML 6151D1:	Double Pole, Single Throw
Fig. 33+	ML A6151A2:	Single Pole, Double Throw, with Aux. Contacts	Fig. 44	ML 6151D2:	Double Pole, Single Throw
Fig. 34	ML 6151B1:	Single Pole, Single Throw	Fig. 40	ML 6151E1:	Single Pole, Make and Break
Fig. 35	ML 6151B2:	Single Pole, Single Throw	Fig. 41	ML 6151F1:	Single Pole, Single Throw
Fig. 36	ML 6151B3:	Single Pole, Single Throw	Fig. 42	ML 6151F2:	Single Pole, Single Throw
Fig. 37	ML 6151B4:	Single Pole, Single Throw	Fig. 40++	ML A6151P1:	Single Pole, Make and Break
Fig. 38	ML 6151C1:	Double Pole, Single Throw	Fig. 40+++	ML A6151R1:	Single Pole, Make and Break
Fig. 43	ML 6151C2:	Double Pole, Single Throw			

+Same as Fig. 33 except without Ref. 117, 120, and 121 for details of contact boxes see page 17A.

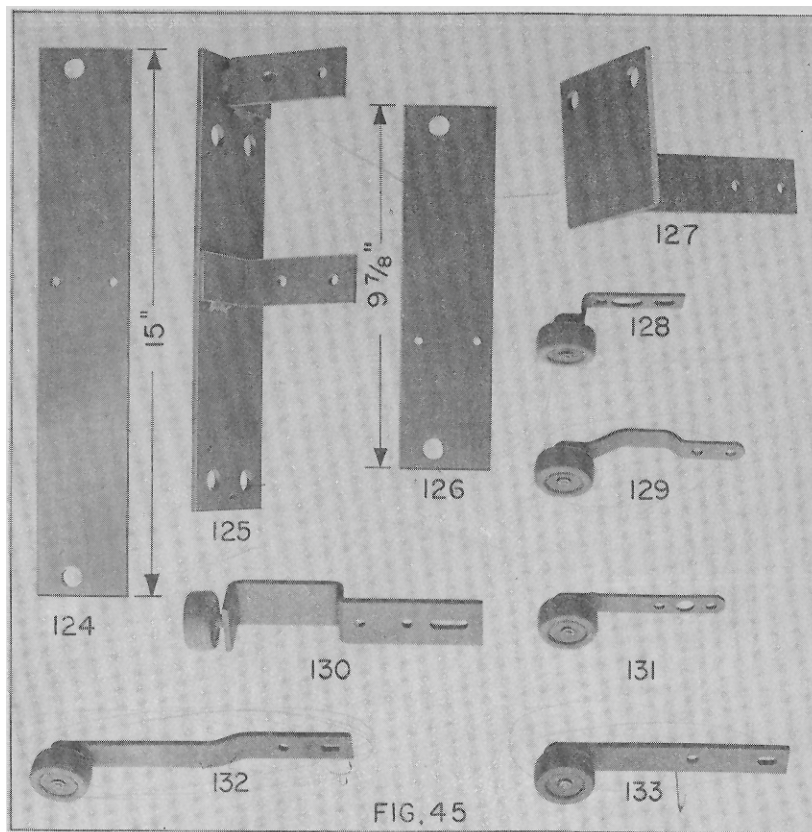
List of Parts

Fig. No	Ref. No.	Part or ML No.	Description	Material List and Quantity														
				A6151A_		6151_										A6151_		
				1	2	B1	B2	B3	B4	C1	C2	D1	D2	E1	F1	F2	P1	R1
33-44	99	275E1	Barrier, Insulating	1	1	1	1	1	1	1	1	1	1	1	1	1	1	1
33-44	100	B306F1	Base, Contact (movable)	1	1	1	1	1	1	1	1	1	1	1	1	1	1	1
33	101	A306C2	Base, Contact (stationary) consisting of:	1	1	-	-	-	-	-	-	-	-	-	-	-	-	-
			1-Base Contact #A306G1*	-	-	-	-	-	-	-	-	-	-	-	-	-	-	-
			2-Connectors #176H1*	-	-	-	-	-	-	-	-	-	-	-	-	-	-	-
			2-Contacts, Aux. #150F4*	-	-	-	-	-	-	-	-	-	-	-	-	-	-	-
33	102		3-Contacts #150H4	-	-	-	-	-	-	-	-	-	-	-	-	-	-	-
38, 43	103	A306G3	Base, Contact (stationary) consisting of:	-	-	-	-	-	1	1	-	-	-	-	-	-	-	-
			1-Base Contact #A306G1*	-	-	-	-	-	-	-	-	-	-	-	-	-	-	-
			1-Connector #176E1*	-	-	-	-	-	-	-	-	-	-	-	-	-	-	-
			1-Connector #176F1*	-	-	-	-	-	-	-	-	-	-	-	-	-	-	-
38, 43	102		2-Contacts #150H4	-	-	-	-	-	-	-	-	-	-	-	-	-	-	-
39, 44	104	A306G4	Base, Contact (stationary) consisting of:	-	-	-	-	-	-	-	1	1	-	-	-	-	-	-
			1-Base Contact #A306G1*	-	-	-	-	-	-	-	-	-	-	-	-	-	-	-
			1-Connector #176E1*	-	-	-	-	-	-	-	-	-	-	-	-	-	-	-
			1-Connector #176F3*	-	-	-	-	-	-	-	-	-	-	-	-	-	-	-
39, 44	102		2-Contacts #150H4	-	-	-	-	-	-	-	-	-	-	-	-	-	-	-
34, 36, 41	105	A306G5	Base, Contact (stationary) consisting of:	-	-	1	-	1	-	-	-	-	-	-	1	-	-	-
			1-Base Contact #A306G1*	-	-	-	-	-	-	-	-	-	-	-	-	-	-	-
34, 36, 41	102		2-Contacts #150H4	-	-	-	-	-	-	-	-	-	-	-	-	-	-	-
35, 37, 42	106	A306G6	Base, Contact (stationary) consisting of:	-	-	-	1	-	1	-	-	-	-	-	-	1	-	-
			1-Base Contact #A306G1*	-	-	-	-	-	-	-	-	-	-	-	-	-	-	-
			2-Contacts #150H4	-	-	-	-	-	-	-	-	-	-	-	-	-	-	-
35, 37, 42	102		2-Contacts #150H4	-	-	-	-	-	-	-	-	-	-	-	-	-	-	-
40	107	A306G7	Base, Contact (stationary) consisting of:	-	-	-	-	-	-	-	-	-	1	-	-	-	-	-
			1-Base Contact #A306G1*	-	-	-	-	-	-	-	-	-	-	-	-	-	-	-
			2-Connector #176E1*	-	-	-	-	-	-	-	-	-	-	-	-	-	-	-
40	102		2-Contacts #150H4	-	-	-	-	-	-	-	-	-	-	-	-	-	-	-
40++	107	A306G10	Base, Contact (stationary) consisting of:	-	-	-	-	-	-	-	-	-	-	-	-	-	1	-
			1-Base Contact #A306G1*	-	-	-	-	-	-	-	-	-	-	-	-	-	-	-
			2-Connector #176E1*	-	-	-	-	-	-	-	-	-	-	-	-	-	-	-
40++	102		2-Contacts #150H4	-	-	-	-	-	-	-	-	-	-	-	-	-	-	-
40+++	107	A306G11	Base, Contact (stationary) consisting of:	-	-	-	-	-	-	-	-	-	-	-	-	-	-	1
			1-Base Contact #A306G1*	-	-	-	-	-	-	-	-	-	-	-	-	-	-	-
			2-Connectors #176E1*	-	-	-	-	-	-	-	-	-	-	-	-	-	-	-
40+++	102		2-Contacts #150H4	-	-	-	-	-	-	-	-	-	-	-	-	-	-	-
33-40, 43, 44				-	-	-	-	-	-	-	-	-	-	-	-	-	-	-
40+, 40+++	108	B308GA2	Box, Switch, with Pin	1	1	1	1	1	1	1	1	1	1	1	-	-	1	1
41	109	308BD1	Box, Switch, with Pin and Bracket	-	-	-	-	-	-	-	-	-	-	-	1	-	-	-
42	110	308D2	Box, Switch, with Pin and Bracket	-	-	-	-	-	-	-	-	-	-	-	-	1	-	-
33-37, 41, 42	111	176D1	Connector	1	1	1	1	1	-	-	-	-	-	-	1	1	-	-
36, 37	112	176AA1	Connector (for guide)	-	-	-	2	2	-	-	-	-	-	-	-	-	-	-
33-40, 43, 44				-	-	-	-	-	-	-	-	-	-	-	-	-	-	-
40+, 40+++	113	932A2	Contact, Spring	-	-	2	2	2	2	2	2	2	2	2	-	-	1	1
33-40, 43, 44				-	-	-	-	-	-	-	-	-	-	-	-	-	-	-
40+, 40+++	114	150P4	Contact, Spring	-	-	-	-	-	2	2	2	2	2	-	-	-	1	1
33	115	150H2	Contact, Spring	2	2	-	-	-	-	-	-	-	-	2	2	-	-	-
40+, 40+++	114	150P44	Contact, Spring	-	-	-	-	-	-	-	-	-	-	-	-	-	1	1
40+, 40+++	115	150P45	Contact, Spring	-	-	-	-	-	-	-	-	-	-	-	-	-	1	1
36, 37	116	385J1	Guide, Contact Spring	-	-	-	2	2	-	-	-	-	-	-	-	-	-	-
33, 43, 44	117	396BA1	Housing, Spring	2	-	-	-	-	-	2	-	2	-	-	-	-	-	-
33-44	118	A397A1	Hub, Switch Arm	1	1	1	1	1	1	1	1	1	1	1	1	1	1	1
33-44	119	A429C1	Lining (for stationary contact base)	1	1	1	1	1	1	1	1	1	1	1	1	1	1	1
33, 43, 44	120	77TA1	Pin, Spring	2	-	-	-	-	-	2	-	2	-	-	-	-	-	-
33, 43, 44	121	90CB6	Spring (for Pin)	2	-	-	-	-	-	2	-	2	-	-	-	-	-	-
33-44	122	128H1	Washer 1/32" thick (for spring contacts)	2	2	2	2	2	3	3	3	3	2	2	2	2	4	4
38-40, 43, 44				-	-	-	-	-	-	-	-	-	-	-	-	-	-	-
40+, 40+++	123	128H3	Washer 1/8" thick (for spring contacts)	-	-	-	-	-	1	1	1	1	2	-	-	-	1	1

*Not furnished separately: for replacement order assembled base;

++Same as Fig 40 except for base A306G10 instead of A306G7;

+++Same as Fig. 40 except base A306G11 instead of A306G7.



ROLLER ARMS (WITH ROLLER) - FIG. 45

The following Roller Arms (or Strikers now used for new installations are also used for Service changeovers when the 6098E Gate Switches replace other types.

Ref No.	Part No. of Arm	Where Used
128	288NB2	With Bostwick Passenger Sliding Gate, Freight Enclosure; Dwg. 6098FB
129	A288LB2	With 6378A Safety Manually Operated Passenger Gate; Dwg. A6098AB
130	288JB2	With Vertical Sliding Wood Gate, Freight Enclosure; Dwg. 6098GB
130	288JB2	With Vertical Sliding Wire Mesh Gate, Freight Enclosure; Dwg. 6098HB
*	288DS2	With Vertical Sliding Wood or Wire Mesh Gate, Freight Enclosure; Dwg. 6098BN
131	288KB2	With Bostwick Manually Operated Passenger Gate; Dwg. 6098BB
131	288KB2	Same - for Car Design #4247; Dwg. 6098CB
132	288MB3	With Bostwick Service Sliding Gate, Freight Enclosure; Dwg. 6098DB
**	288BF2	With Bi-Parting Gate, R-1 or R-2 Dumbwaiter Car; Dwg. 6098AP (Arm 6-3/8" lg.)
**	288BF4	With Bi-Parting Gate, S-1 or S-2 Dumbwaiter Car; Dwg. 6098AP (Arm 7-3/4" lg.)
133	288MB4	With Lazy Tong Sliding Freight Gate, Freight Enclosure; Dwg. 6098EB and 6098BG (Arm 6" lg.)
133	288MB6	With Lazy Tong Sliding Freight Gate, Freight Enclosure; Dwg. 6098EB and 6098BP (Arm 13-1/2" lg.)
133	A287AW2	With 6806 Vertical Lifting Car Gate; Dwg. A6098DF

* Similar to Ref. 130, except roller on side; ** Similar to Ref. 132; ● Similar to Ref. 133.

Unpublished Work—Otis Elevator Co., 1982

Ref. No.	Part No. of Arm	Where Used
●	288KM1	With Single Slide, 2 Speed, Center Opening or 2 Speed Center Opening, Type 6970A Operator, Type AU Hangers (Arm 5-1/16" long)
●	B288KM1	With Single Slide, 2 Speed, Center Opening or 2 Speed Center Opening, Type 6970A Operator, Type AU Hangers (Arm 6-3/4" long)

ADAPTER AND ADAPTER PLATES - FIG. 45

For use when Type A6098B Limit Switches replace other types.

Ref. No.	Part No.	Description	For Switch	When Replacing
124	386EK1	Plate, Adapter	A6098B5	2-K-2
124	386EK1	Plate, Adapter	A6098B7	2-K-1
125	270B1	Adapter	A6098B3	"A"
126	386DK1	Plate, Adapter	A6098B1	1-K-2 or 10-K-2
126	386DK1	Plate, Adapter	A6098B3	1-K-1 or 10-K-1
127	270A1	Adapter	A6098B3	N-1
127	270A1	Adapter	A6098B7	N-2