

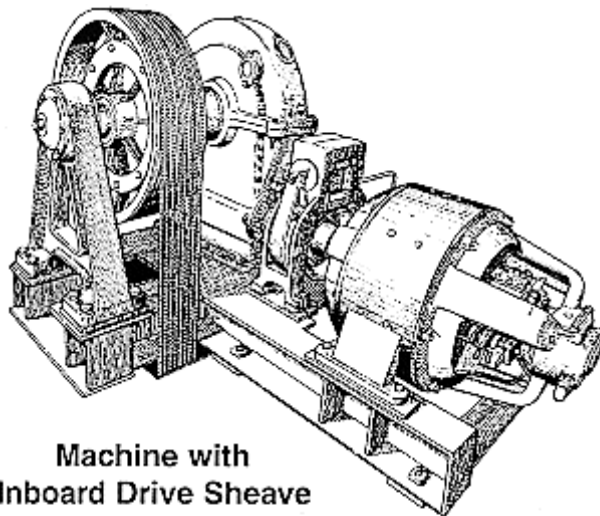
SPL 06-6119A - #1 SWT Machine Yonkers And Hamilton Manufacture (with Roller Bearing Sheaveshaft)

Unpublished Work - (c) Otis Elevator Company. Any unauthorized reproduction, disclosure, or distribution of copies or content by any person of any portion of this work may be a violation of Copyright Law of the United States of America. All rights reserved.

September 1997

Page 1

NOTE: ALL VINTAGE DATES IN THIS LEAFLET ARE APPROXIMATE AND TO BE USED FOR REFERENCE ONLY!



**Machine with
Inboard Drive Sheave**

NAO:

- 6119A (1934)
- A6119A (1935 - 1944)
- B6119A (1944 - 1948)
- C6119A (1948 - 1961)
- D6119A (1961 - 1963)
- E6119A (1963 - 1964)
- F6119A (1964 - prod. end)

INTN'L:

- 6119CE (1955 - 1961)
- A6119CE (1961 - 1963)
- B6119CE (1963 - 1964)
- C6119CE (1964 - prod. end)

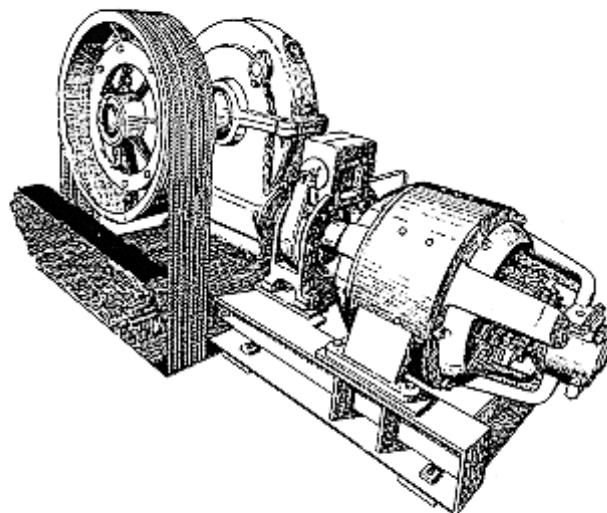
NAO:

- 6119BL (1953 - 1955)
- A6119BL (1956 - 1963)
- B6119BL (1963)
- C6119BL (1964 - prod. end)

- 6119CJ (1955 - 1963)
- A6119CJ (1963 - 1964)
- B6119CJ (1964 - prod. end)

INTN'L:

- 6119CL (1957 - 1963)
- A6119CL (1963 - 1964)
- B6119CL (1964 - prod. end)



**Machine with
Overhung Drive Sheave**

SPL 06-6119A - #1 SWT Machine Yonkers And Hamilton Manufacture (with Roller Bearing Sheaveshaft)

Page 2

REVISED DATE	RESPONSIBLE ENGINEER	PRIMARY REASON FOR REVISION
05/30/97	Rob Choquette	SPL does not yet exist - New SPL

Leaflet Description

This spare parts leaflet is intended to supply all necessary ordering data for the NAO-produced roller bearing sheaveshaft versions of the #1 SWT machine, also known as the "6119" or "19BT" machine. This version of the #1 machine was introduced about 1934 and produced in NAO until the late 1970s. Production took place in the Yonkers, USA plant up to 1965, and continued in the Hamilton, Canada plant until the late 1970s. When the early sleeve bearing sheaveshaft version of the #1 machine was succeeded by this new roller bearing type, the new machine was known as the **6119 SWT** in order to differentiate it from its predecessor. In the 1950s, a new machine naming convention was developed, and the #1 machine was called a **19BT** machine. Note that the post-1934 #1 SWT, the 6119 SWT, & the 19BT are all the same machine.

Versions of the #1 SWT machine have also been produced by other Otis operations including the UK, Germany, and Brazil. Although these are derivatives of the NAO design, they were produced to different drawings and parts are NOT interchangeable with the NAO version. The term "**International**" as used in this leaflet refers to the NAO "exported" version of the machine, intended for international contracts but supplied by NAO Yonkers Works. The international versions of the machine are not expected to be found in NAO, but may be found in ETO or elsewhere in the world.

The **6119 SWT** version of the machine had two distinguishing features compared to the earlier sleeve bearing design. First, the sheaveshaft is supported on roller bearings versus poured babbitt sleeve bearings. Second, the wormshaft thrust bearing is of the "angular contact" ball bearing type, an improvement over the earlier Otis manufactured flat "plate" type thrust bearing.

Sheaveshaft bearings: Tapered roller bearings were used on units supplied in NAO (except on overhung sheave basement machines). Spherical roller sheaveshaft bearings were supplied on "International" units.

SPL 06-6119A - #1 SWT Machine Yonkers And Hamilton Manufacture (with Roller Bearing Sheaveshaft)

Page 3

Wormshaft: The wormshaft utilizes either an "early" or "late" type of angular contact thrust bearing, depending on the vintage. The "early" and "late" thrust bearing types are not interchangeable. See page 8 for illustration of distinguishing features.

Early type thrust bearing: The "early" type was supplied from about 1934 to 1955 and originally used 207W/6800DP type thrust bearings. For service replacement, the "early" type now uses a 2700AAN kit with a different bearing, sleeve, and adapter parts (This "early" kit is also usable on some pre-1934 #1 SWT machines. See Spare Parts Leaflet C-627 for more information). **Distinguishing features:** Domed cover, castle nut, and a shaft diameter of 1.12 inches.

Late type thrust bearing: The "late" type was supplied from about 1955 until the end of production and uses A6800AN type thrust bearings. All parts for the "late" thrust bearing have remained the same and are available for service replacement. **Distinguishing features:** Flat cover, bearing nut and tabbed washer, and a shaft diameter of 1.37 inches.

Note: Service wormshafts supplied since 1955 use the "late" type thrust bearing.

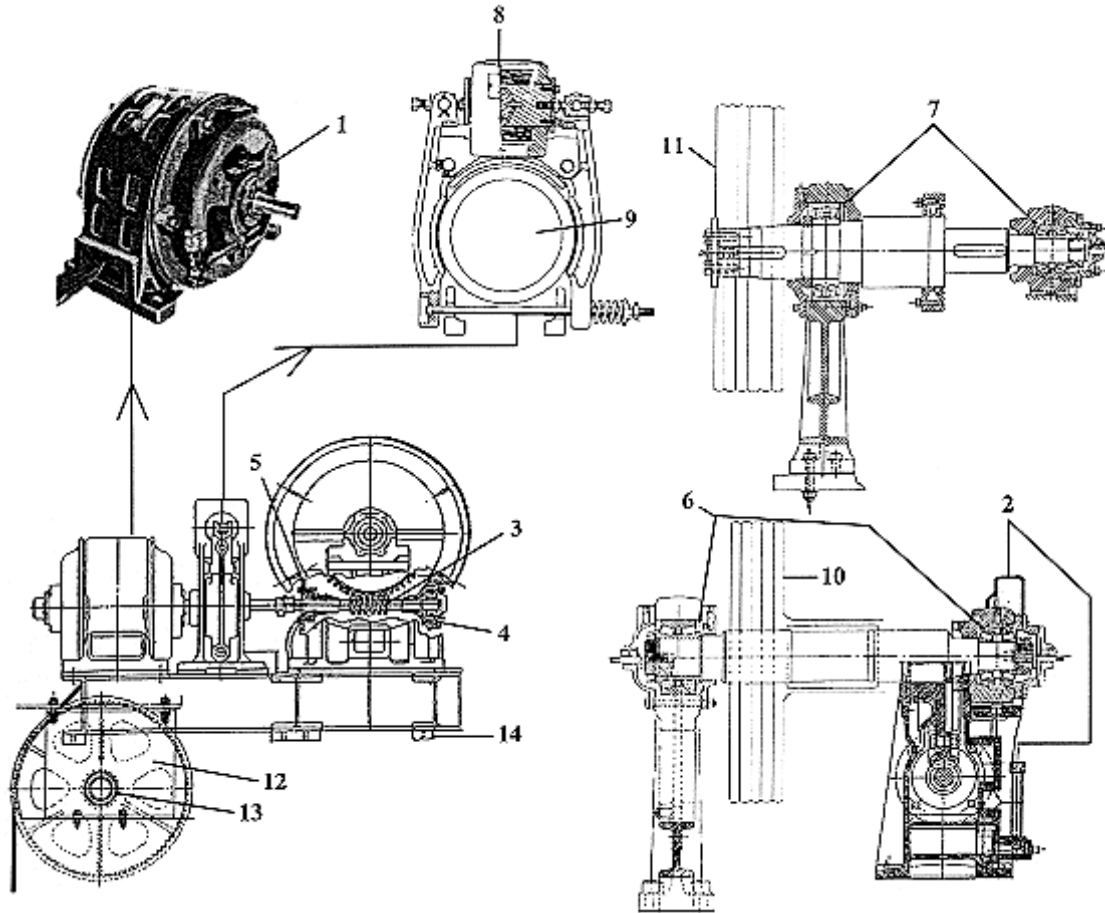
Note that **brakes** and **motors** are separate components which are covered in their own leaflets as indicated. In addition, although it is not specifically mentioned, this leaflet can also be used for special 6119 versions such as **escalator** or **externally geared units**. If you are unsure of the correct parts to order, consult your records or contact OSC for information.

This Spare Parts Leaflet (SPL) is prepared to assist you in determining the Lowest Replaceable Units (LRU) supported by the Otis Service Center for the standard version of the product titled on the preceding page. The parts are chosen by Otis associates from: Engineering, Field Engineering, Service Engineering, and Manufacturing. We attempt to make part identification as easy as possible. The SPL, however, cannot be all inclusive. Elevator and escalator contracts classified as either "special" or "custom" are not addressed. Alternative sources of information such as: the Contract Folder, Technical Information Publications, Field Education Articles, Construction Letters, etc. may give the information you are after. You live in the real world of maintaining your elevator and escalator contracts. On a daily basis, situations arise regarding parts identification and at times, for some reason, the part you need is not in the SPL. If you think a standard part not listed should be - let us know. We will respond.

Rob Choquette - Service Engineering

SPL 06-6119A - #1 SWT Machine Yonkers And Hamilton Manufacture (with Roller Bearing Sheaveshaft)

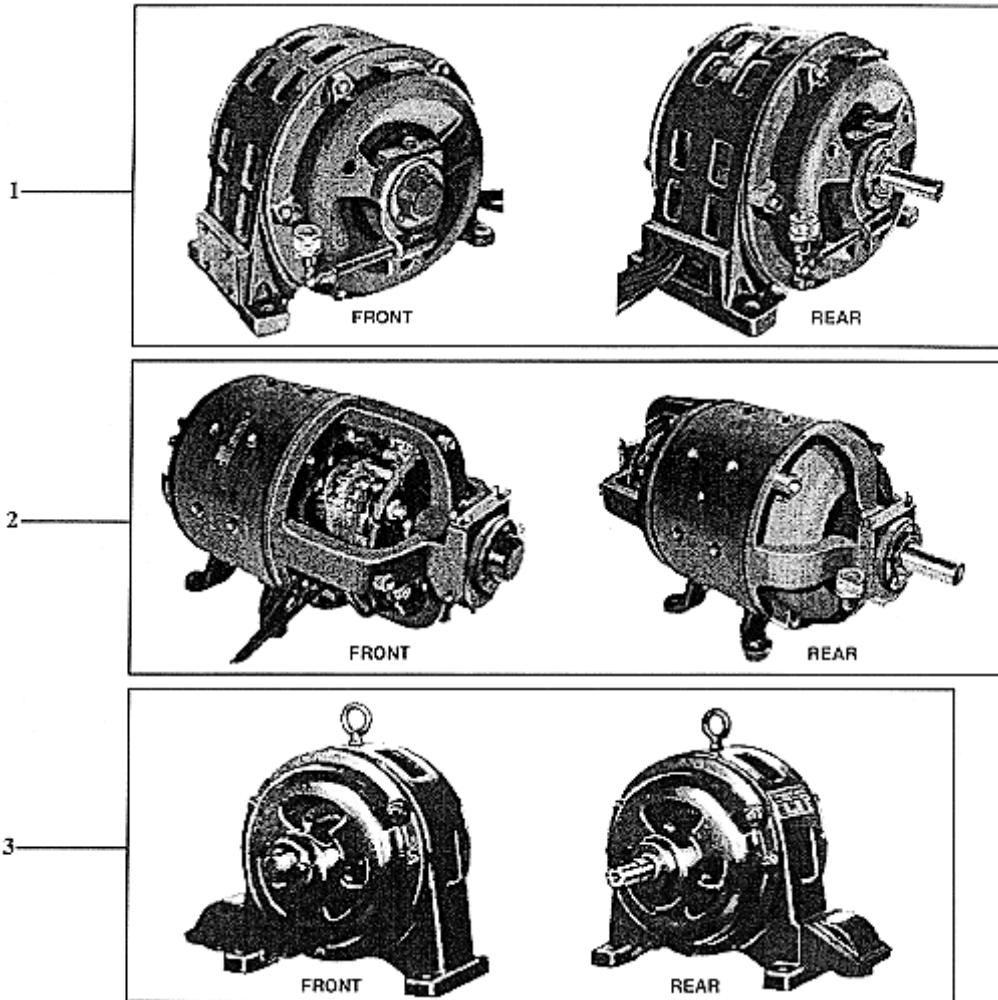
Page 4 - #1 SWT MACHINE, TABLE OF CONTENTS



Ref. #	Part # or ML	Description
1	See Also Page 5	Motors, AC & UMV
2	See Also Page 6	Upper & Lower Gearcase
3	See Also Page 7	Worm & Gear Sets
4	See Also Page 8	Wormshaft Parts - Part 1; Thrust Bearing & Outside Housing
5	See Also Page 9	Wormshaft Parts - Part 2; Inside Housing & Packing
6	See Also Pages 10-11	Sheaveshaft Parts, Inboard Sheave
7	See Also Page 12-13	Sheaveshaft Parts, Overhung Sheave
8	See Also SPL C-958F	Brake, 7D
	See Also SPL C-959G	Brake, 9D
9	See Also Page 15	Brake Coupling, 7D & 9D Brake
10	See Also Page 16	Drive Sheave, Inboard Sheave
11	See Also Page 17	Drive Sheave, Overhung Sheave
12	See Also Page 18	Deflector Sheave
13	See Also Page 19	Deflector Sheave Sundries
14	See Also Page 20	Sound Isolation Equipment

SPL 06-6119A - #1 SWT Machine Yonkers And Hamilton Manufacture (with Roller Bearing Sheaveshaft)

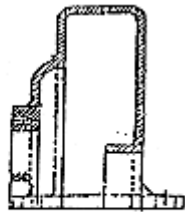
Page 5 - #1 SWT MACHINE AC & UVM MOTORS



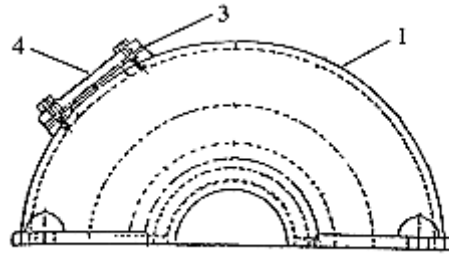
Ref. #	Part # or ML	Description
	VINTAGE	
	1934 to prod. end	
1	See Also SPL C-1003	Motor, Type 60ES, AC, 1 and 2 speed
	See Also SPL C-1004	Motor, Type 83ES, AC, 1 and 2 speed
	Contact OSC	Motor, Type 93ES
	Contact OSC	Motor, Type 95ES
2	See Also SPL C-998A	Motor, Type 63G, DC
	See Also SPL C-999B	Motor, Type 77G, DC
3	See Also SPL C-497C	Motor, 2-1/2 AC, Squirrel Cage Type
	See Also SPL C-209A	Motor, 3 AC, Collector Ring Type
	Contact OSC	Motor, 3-3/4 AC, Collector Ring Type
	See Also SPL C-206C or C-210A	Motor, 5 AC, International Division Only

SPL 06-6119A - #1 SWT Machine Yonkers And Hamilton Manufacture (with Roller Bearing Sheaveshaft)

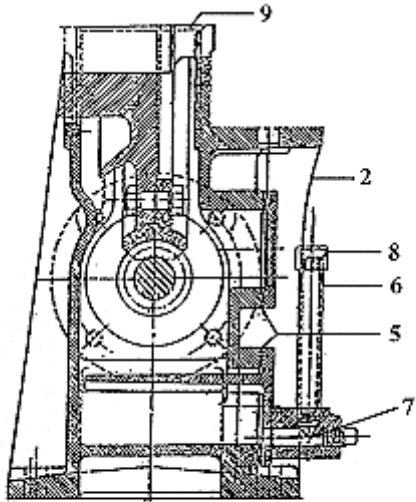
Page 6 - UPPER & LOWER GEARCASE



Upper Gearcase
"End View"



Upper Gearcase
"Side View"



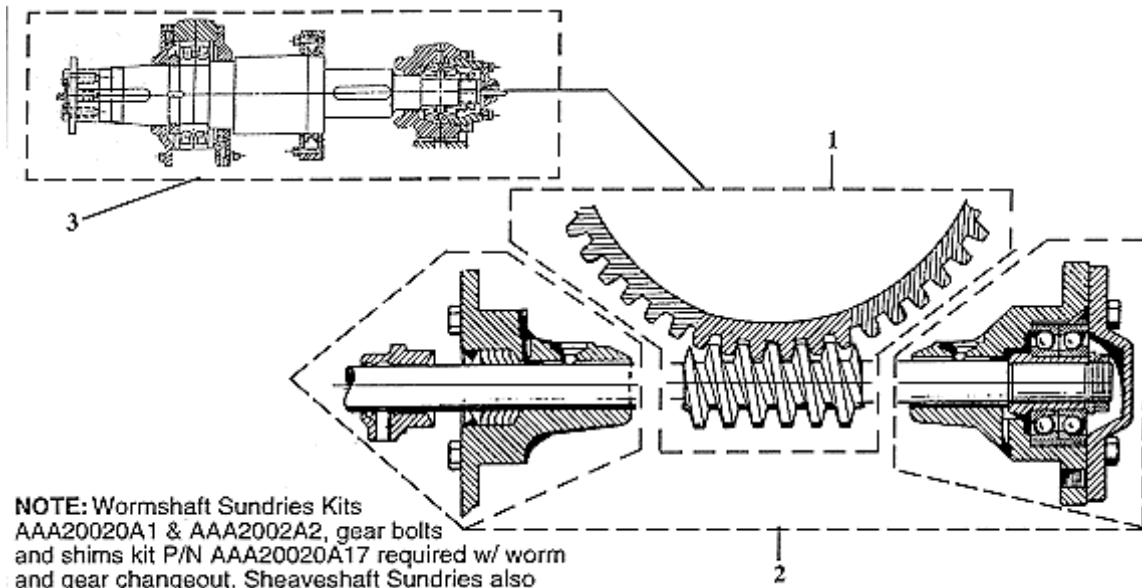
Lower Gearcase
"End View"

NOTE: Upper and lower gearcases are not available as spare parts. Part numbers specified are for reference only. Base part number can be obtained on upper and lower gearcase castings (i.e. "B330F").

VINTAGE				Description
Ref. #	1934 to 1949	1950 to 1963	1964 to Prod. End	
1	A330F2	B330F2 or A330G2	C330F2	Gearcase, Upper (Ref.)
2		C330E1	D330E1	Gearcase, Lower (Ref.)
3		376KA3	376KA1	Gasket, Inspection Cover
4		346KV1	346LG1	Cover, Steel Inspection
			AAA346AWH8	Cover, Clear Plastic
5		124139		Gasket, Inspection Cover
6		808908		Pipe, Oil Height Gauge
7		Standard Commercial 1/2" Pipe Close Nipple		Pipe, 1/2" Standard Steel Close Nipple
8		89835		Cap, 1/2" Female Pipe
9		376BF1	For order specify 2	Gasket, Gearcase Main

SPL 06-6119A - #1 SWT Machine Yonkers And Hamilton Manufacture (with Roller Bearing Sheaveshaft)

Page 7 - WORM & GEAR SETS



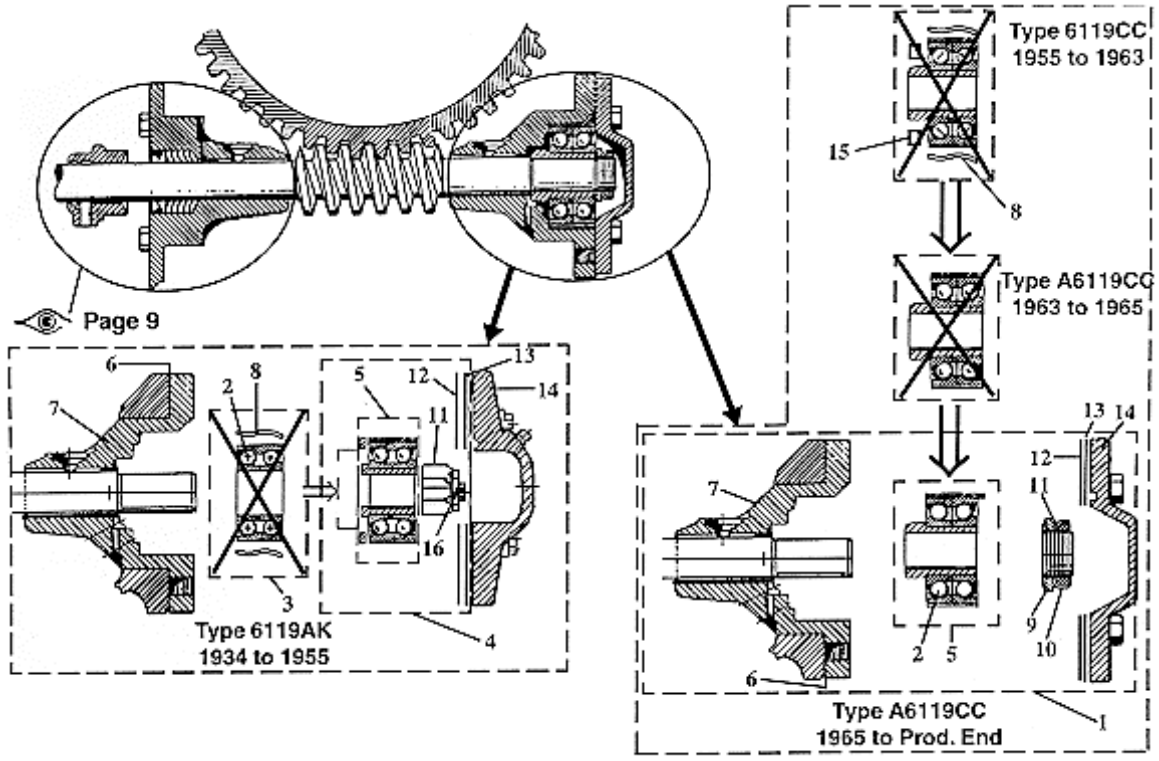
NOTE: Wormshaft Sundries Kits AAA20020A1 & AAA2002A2, gear bolts and shims kit P/N AAA20020A17 required w/ worm and gear changeout. Sheaveshaft Sundries also recommended.

SPL 06-6119A - #1 SWT Machine Yonkers And Hamilton Manufacture (with Roller Bearing Sheaveshaft)

		VINTAGE**					
		1964 to Prod. End	1955 to 1964	1948 to 1955	1934 to 1948	Canadian (Hamilton)	
Ref. #	Gear Ratio	Current P/N	Superceded P/Ns**				Description
1	15-3/4:1	490GM2/ A200G8	6800P2/ 200AD1	490AT2/ 200AD1	490AT2/ 200AD1	Consult OSC	Worm and Gear Set. All Worm and Gears are Supplied as matched sets from OSC to guarantee predictable installation and life.
	21-2/3:1	490EK2/ A200G1	Same as Current	B490W2/ A200G1	B490W2/ A200G1		
	27-1/3:1	490EN2/ A200G2	490EN2/ B200D1	C490P2/ B200D1	C490P2/ B200D1		
	31/1/2:1	490EP2/ A200G3	490EP2/ B200F1	C490J2/ B200F1	C490J2/ B200F1		
	43-1/2:1	490EG2/ A200G4	490EG2/ A200H1	B490H2/ A200H1	B490H2/ A200H1		
	54:1	A490EH2/ A200G5	490EH2/ A200J1	B490T2/ A200J1	A490T2/ 200J1		
	62:1	A490EF2/ A200G6	490EF2/ A200E1	B490R2/ A200E1	B490R2/ A200E1		
	86:1	A490EJ2/ A200G7	490EJ2/ 200AH1	490AZ2/ 200AH1	490AZ2/ 200AH1		
2	REQUIRED WITH WORM AND GEAR CHANGEOUT (see Note): Wormshaft Sundries See Also page 8 & 9						
3	**Recommended with worm and gear changeout: Sheaveshaft Sundries(Bearings) See Also pgs. 10-11, Ref. 1 (machines with inboard sheave) or pgs. 12-13 Ref. 1 (machines with overhung sheave).						
**Vintage dates and superceded part numbers are for reference only. If unclear, contact OSC.							

SPL 06-6119A - #1 SWT Machine Yonkers And Hamilton Manufacture (with Roller Bearing Sheaveshaft)

Page 8 - WORMSHAFT PARTS - PART 1; THRUST BEARING & OUTSIDE HOUSING PARTS

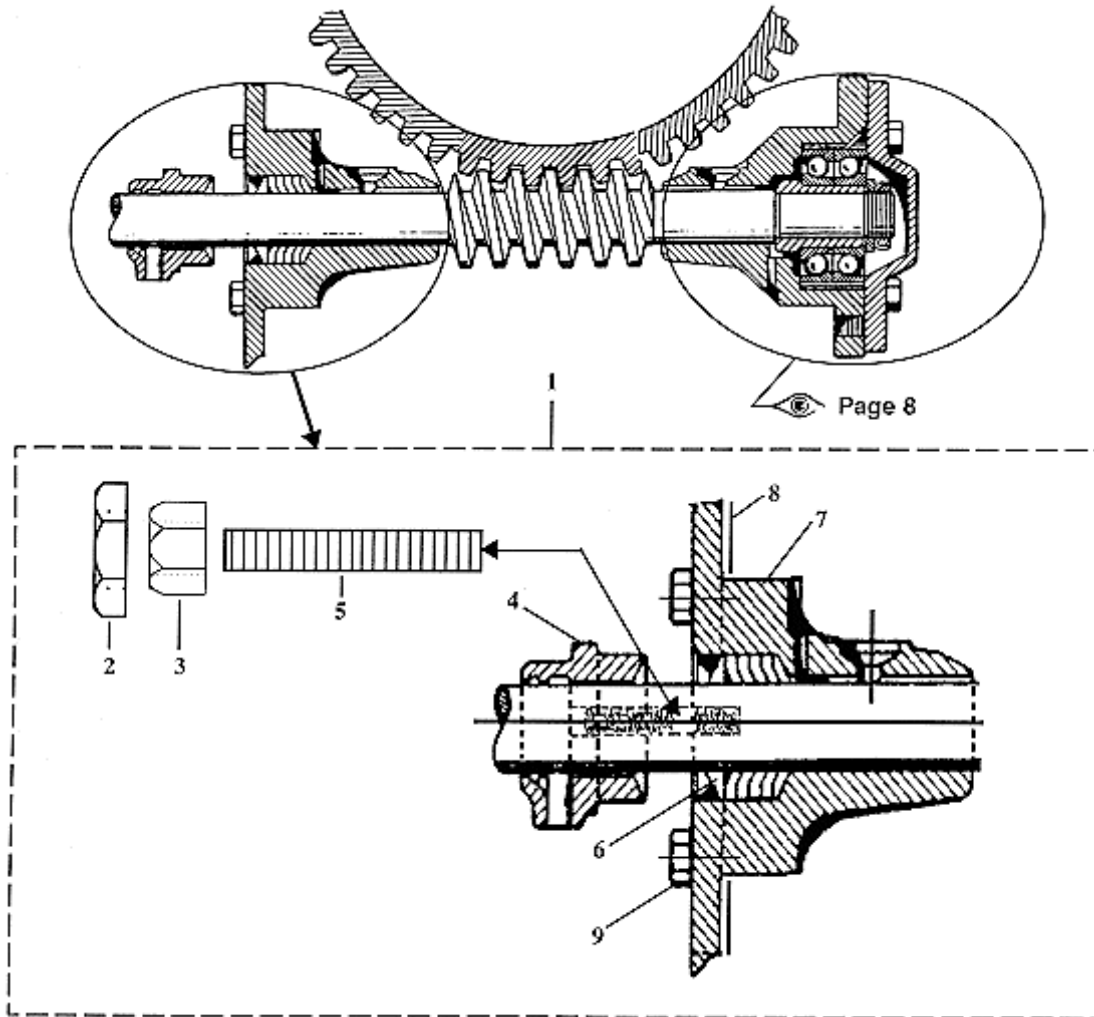


SPL 06-6119A - #1 SWT Machine Yonkers And Hamilton Manufacture (with Roller Bearing Sheaveshaft)

VINTAGE			
	Type 6119AK 1934 to 1955	Type 6119CC 1955 to 1963	Type A6119CC 1963 to prod. end
Ref. #	Part # or ML		Description
1	N/A	AAA20020A1	
2	207W2 Replaced by item 3	207AR4 Replaced by item 5	
3	6800DP4 Replaced by item 4	N/A	
4	2700AAN2	N/A	
5	6800DP14	A6800AN1	
6	376J6		Gasket, Thrust Housing (0.005" paper)
7	396AT1	396DN1	
8	93AR1		N/A
9	N/A	462W47	
10	N/A	130AA8	
11		72BV8	
	72AM4		
	CAA72A1		
12	376J4		Gasket, Housing to Cover (0.003" Green) For order specify 3
13	376J5		Gasket, Housing to Cover (0.0075" Clear) For order specify 4
14	A346EY1	A346YV1	
15	N/A	33D11	N/A
16	3/16" Pin	N/A	
		Pin, Cotter, 3/16" x 2"	

SPL 06-6119A - #1 SWT Machine Yonkers And Hamilton Manufacture (with Roller Bearing Sheaveshaft)

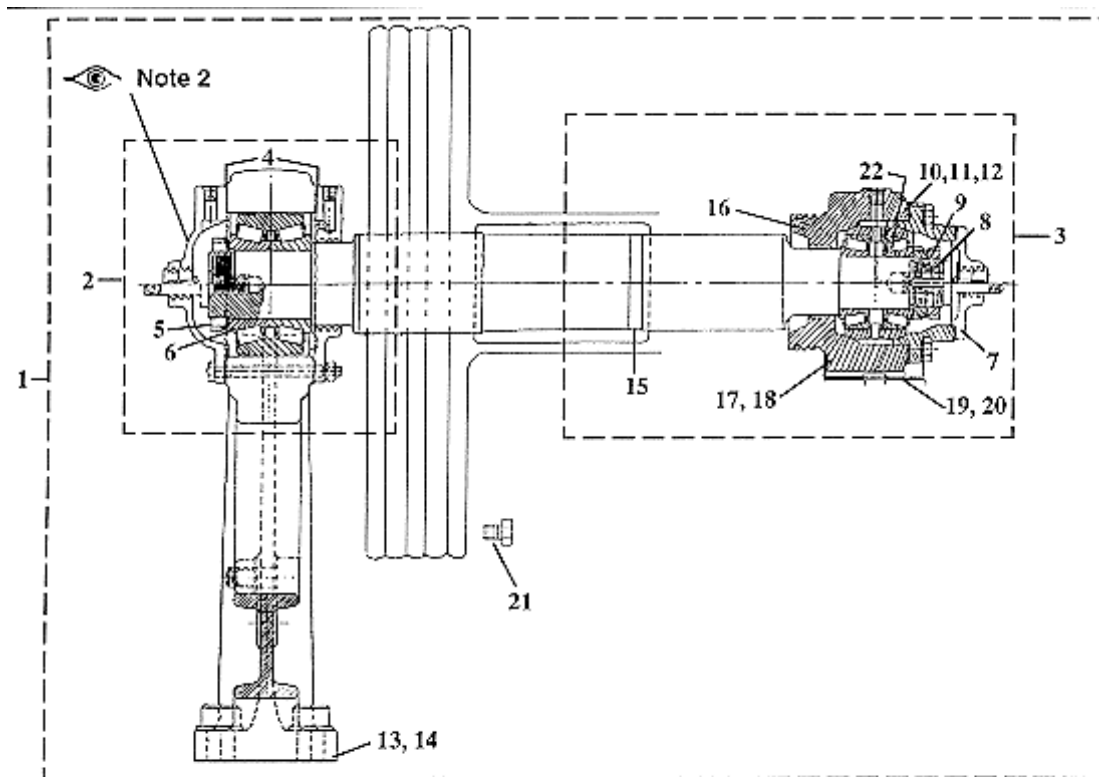
Page 9 - WORMSHAFT PARTS - PART 2; INSIDE HOUSING & PACKING



VINTAGE 1934 to Current		
Ref. #	Part # or ML	Description
1	AAA20020A2	Kit, Inside Housing Parts Complete
2	Nut,HexJam,1/2-13UNC	Nut, Jam (Qty. 2)
3	Nut,HexFin,1/2-13UNC	Nut, Hex (Qty. 2)
4	381D1	Gland, Packing
5	96H31	Stud, Threaded, Gland (Qty. 2)
6	182A3	Packing, Complete
7	396AW1	Housing, Inside
8	376J6	Gasket
9	Bolt,HexFin,5/8-11UNCx1-1/2	Bolt, Hex (Qty. 4)

SPL 06-6119A - #1 SWT Machine Yonkers And Hamilton Manufacture (with Roller Bearing Sheaveshaft)

Page 10 - SHEAVESHAFT PARTS - INBOARD SHEAVE



- NOTES:** 1 - International (Export) Machines Use Spherical Roller Bearings vs. Tapered Roller Bearings
2 - Type_6119A Machines Have a 6-5/8" Bolt Circle on the Pedestal Stand Cover. Type_6119CE Have a 7-3/8" Bolt Circle.

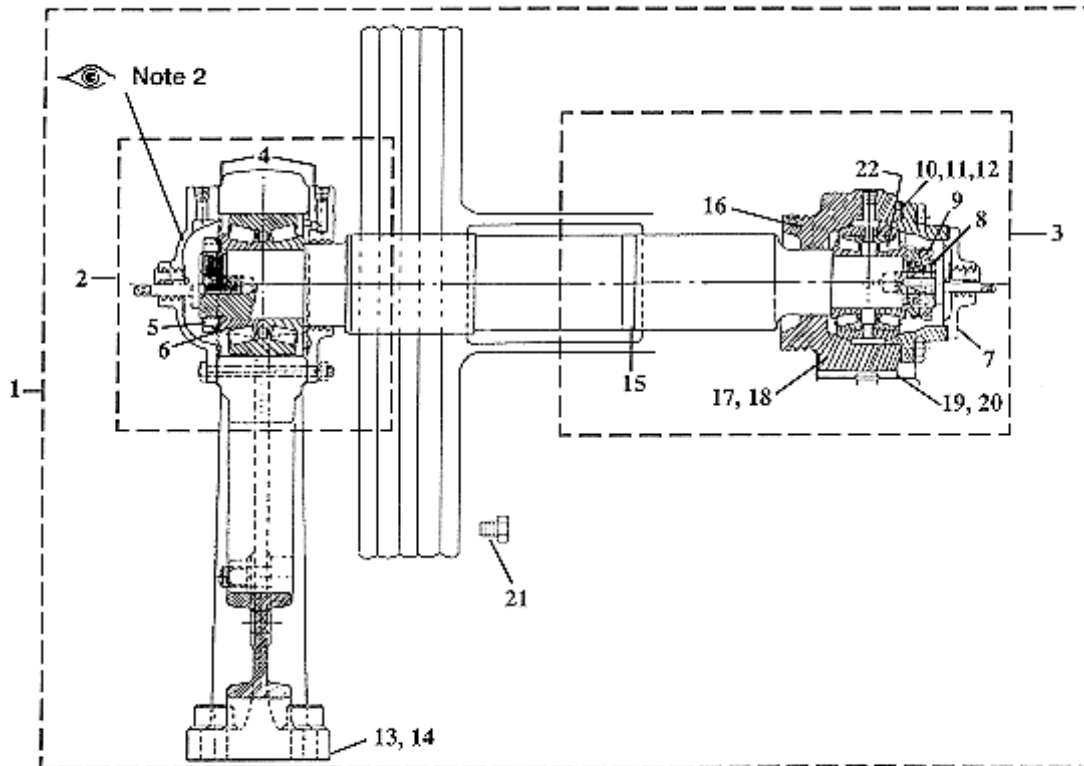
SPL 06-6119A - #1 SWT Machine Yonkers And Hamilton Manufacture (with Roller Bearing Sheaveshaft)

VINTAGE (See Note 2)			
		Type _6119A NAO	Type _6119CE Intn'l Div. Only
Ref. #	Part # or ML		Description
	1934 to 1978	1955 to 1965	
1	AAA20020A3	AAA20020A4	Kit, Sheaveshaft Sundries Complete; Recommended for Worm & Gear Changeout. Includes Ref. 2, 3 And 13 Through 20
2	AAA20020A5		Kit, Bearing Replacement, Sheave End, Includes Bearing & Ref. 4, 5, 6
		AAA20020A6	Kit, Bearing Replacement, Sheave End, Includes Bearing & Ref. 4
3	AAA20020A7		Kit, Bearing Replacement, Gearcase End, Includes Bearing & Ref. 7-12
		AAA20020A8	Kit, Bearing Replacement, Gearcase End, Includes Bearing & Ref. 8, 9, 10
4	376J1	376J14	Gasket, Bearing Stand, Inner & Outer Cover For order specify 2
5	72BV2	N/A	Nut, Bearing
6	130AA2	N/A	Washer, Tabbed, Bearing Nut
7	376H1	N/A	Gasket, End Cover
8	72BV1	72BV12	Nut, Bearing For order specify 2
9	130AA1	130AA12	Washer, Tabbed, Bearing Nut
10	255E1		Shim, Housing to Cover (0.005") For order specify 3
11	255E2	N/A	Shim, Housing to Cover (0.007") For order specify 3
(Sheaveshaft Parts - Inboard Sheave, continued on next page)			

SPL 06-6119A - #1 SWT Machine Yonkers And Hamilton Manufacture (with Roller Bearing Sheaveshaft)

Page 11

(Continued from previous page)



NOTES: 1 - International (Export) Machines Use Spherical Roller Bearings vs. Tapered Roller Bearings
2 - Type _6119A Machines Have a 6-5/8" Bolt Circle on the Pedestal Stand Cover. Type _6119CE Have a 7-3/8" Bolt Circle.

SPL 06-6119A - #1 SWT Machine Yonkers And Hamilton Manufacture (with Roller Bearing Sheaveshaft)

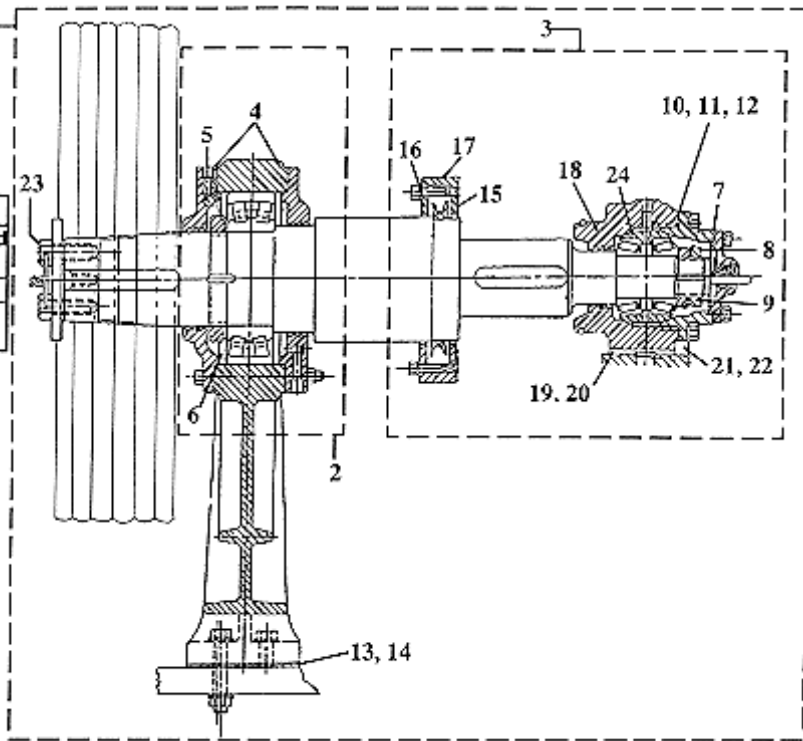
VINTAGE (See Note 2)			
Type _6119A NAO		Type _6119CE Intn'l Div. Only	
Ref. #	1934 to 1978	1955 to 1965	
	Part # or ML		Description
12	255E3	N/A	Shim, Housing to Cover (0.020") For order specify 1
13	255LA1		Shim, Vertical, Sheave End Bearing Stand (0.006") For order specify 6
14	255LA2		Shim, Vertical, Sheave End Bearing Stand (0.008") For order specify 16
15	376BG1		Gasket, Sheaveshaft Bore For order specify 2
16	2700B1		Kit, Neoprene Tube Seal, 3/16" I.D. x 18" Long
17	255YB3		Shim, Lateral, Gear End Bearing Stand (0.006") For order specify 10
18	255YB4		Shim, Lateral, Gear End Bearing Stand (0.008") For order specify 20
19	255CA1		Shim, Vertical, Gear End Bearing Stand (0.006") For order specify 10
20	255CA2		Shim, Vertical, Gear End Bearing Stand (0.008") For order specify 12
21	BTFH3-3/4x3-1/4		Bolt, Sheave Retaining For order specify 6
22	396Y1		Housing, Bearing (Self Aligning)

SPL 06-6119A - #1 SWT Machine Yonkers And Hamilton Manufacture (with Roller Bearing Sheaveshaft)

Page 12 - SHEAVESHAFT PARTS - OVERHUNG SHEAVE

NOTE: To Identify Vintage by Bearing O.D., See Table Below:

VINTAGE	O.D. DIMENSION	
	Sheave End Bearing	Gearcase End Bearing
6119BL	7.87"	3.67"
6119CJ	8.46"	4.72"
6119CL	7.87"	



SPL 06-6119A - #1 SWT Machine Yonkers And Hamilton Manufacture (with Roller Bearing Sheaveshaft)

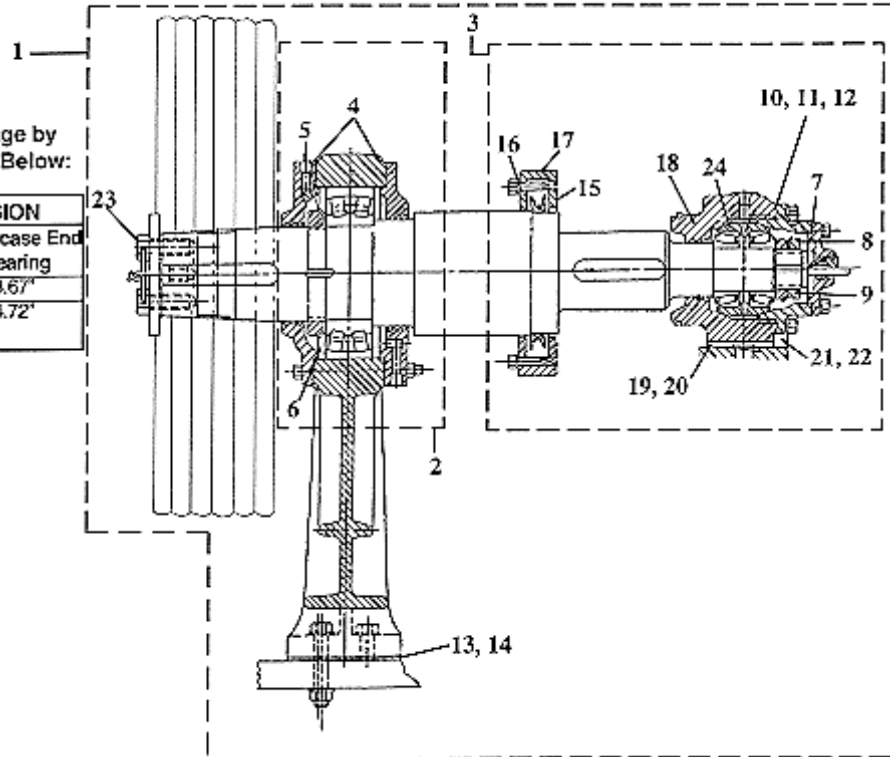
VINTAGE				
Type _6119BL NAO		Type _6119CJ NAO		Type _6119CL Intn'l Div. Only
Ref. #	1954 to prod. end	1955 to prod. end	1957 to prod. end	Description
Part # or ML				
1	AAA20020A9	AAA20020A10	AAA20020A11	Kit, Sheaveshaft Sundries Complete; Recommended for Worm and Gear Changeout. Includes Ref. 2, 3 & 13 22
2	AAA20020A12		AAA20020A14	Kit, Bearing Rep.,? Sheave End, Incl. Bearing & Ref. 4, 5, 6
		AAA20020A13		Kit, Bearing Rep., Sheave End, Incl. Bearing & Ref. 4
3	AAA20020A15			Kit, Bearing Rep., Gearcase End, Incl. Bearing & Ref. 7-12
		AAA20020A16		Kit, Bearing Rep., Gearcase End, Incl. Bearing & Ref. 8, 9, 10
4	376J11	376T15	376J11	Gasket, Bearing Stand, Inner & Outer Cover For order specify 2
5	72BV5	N/A	72BV5	Nut, Bearing
6	130AA5	N/A	130AA5	Washer, Tabbed, Bearing Nut
7	376H1	N/A		Gasket, End Cover
8	72BV1	72BV12		Nut, Bearing For order specify 2
9	130AA1	130AA12		Washer, Tabbed, Bearing Nut
10	255E1			Shim, Housing to Cover (0.005") For order specify 3
11	255E2	N/A		Shim, Housing to Cover (0.007") For order specify 3
12	255E3	N/A		Shim, Housing to Cover (0.020") For order specify 1
(Sheaveshaft Parts - Overhung Sheave, continued on next page)				

SPL 06-6119A - #1 SWT Machine Yonkers And Hamilton Manufacture (with Roller Bearing Sheaveshaft)

(Continued from previous page)

NOTE: To Identify Vintage by Bearing O.D., See Table Below:

VINTAGE	O.D. DIMENSION	
	Sheave End Bearing	Gearcase End Bearing
6119BL	7.87"	3.67"
6119CJ	8.48"	4.72"
6119CL	7.87"	



SPL 06-6119A - #1 SWT Machine Yonkers And Hamilton Manufacture (with Roller Bearing Sheaveshaft)

VINTAGE				
	Type _6119BL NAO	Type _6119CJ NAO	Type _6119CL Intn'l Div. Only	
Ref. #	1954 to prod. end	1955 to prod. end	1957 to prod. end	
	Part # or ML			Description
13	255LA1			Shim, Vertical, Sheave End Bearing Stand (0.006") For order specify 10
14	255LA2			Shim, Vertical, Sheave End Bearing Stand (0.008") For order specify 32
15	376BG1			Gasket, "V" Seal Cover For order specify 2
16	50ABK-21			Seal, "V" Shape (21" Long Req'd)
17	91AK2			Spring, Seal Retainer
18	2700B1			Kit, Neoprene Tube Seal, 3/16" I.D. x 18" Long
19	255YB3			Shim, Lateral, Gear End Bearing Stand (0.006") For order specify 10
20	255YB4			Shim, Lateral, Gear End Bearing Stand (0.008") For order specify 20
21	255CA1			Shim, Vertical, Gear End Bearing Stand (0.006") For order specify 10
22	255CA2			Shim, Vertical, Gear End Bearing Stand (0.008") For order specify 12
23	58AD35			Bolt, Sheave Retaining For order specify 3
24	396Y1	N/A		Housing, Bearing (Self Aligning)

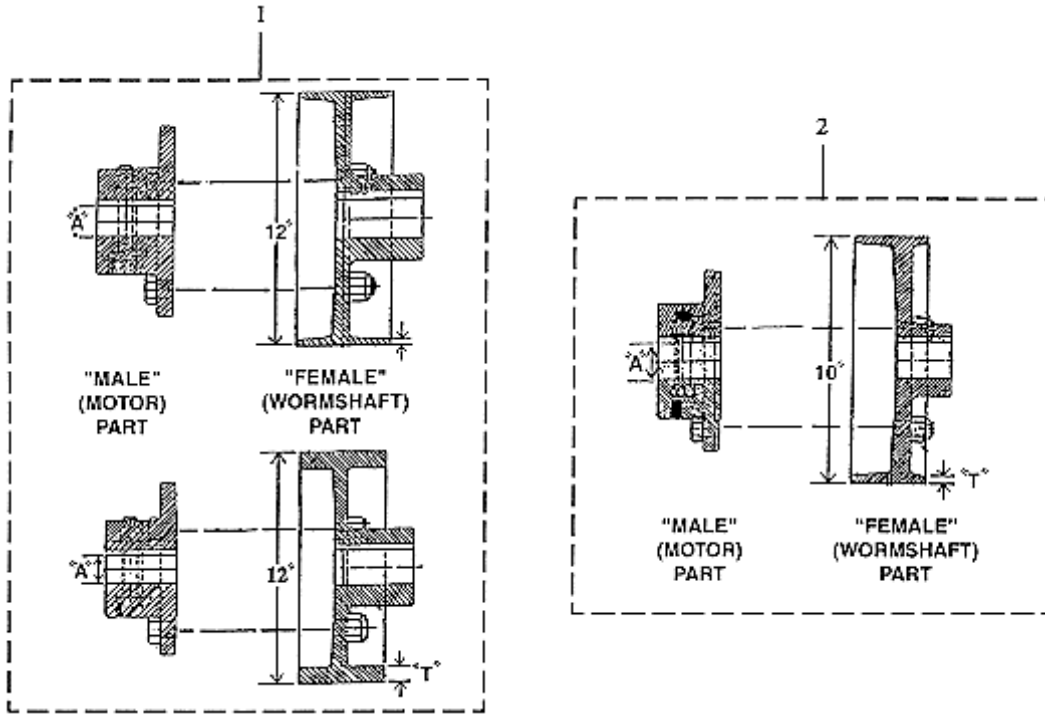
SPL 06-6119A - #1 SWT Machine Yonkers And Hamilton Manufacture (with Roller Bearing Sheaveshaft)

Page 14

This page left blank intentionally.

SPL 06-6119A - #1 SWT Machine Yonkers And Hamilton Manufacture (with Roller Bearing Sheaveshaft)

Page 15 - BRAKE COUPLING; 7D & 9D BRAKE

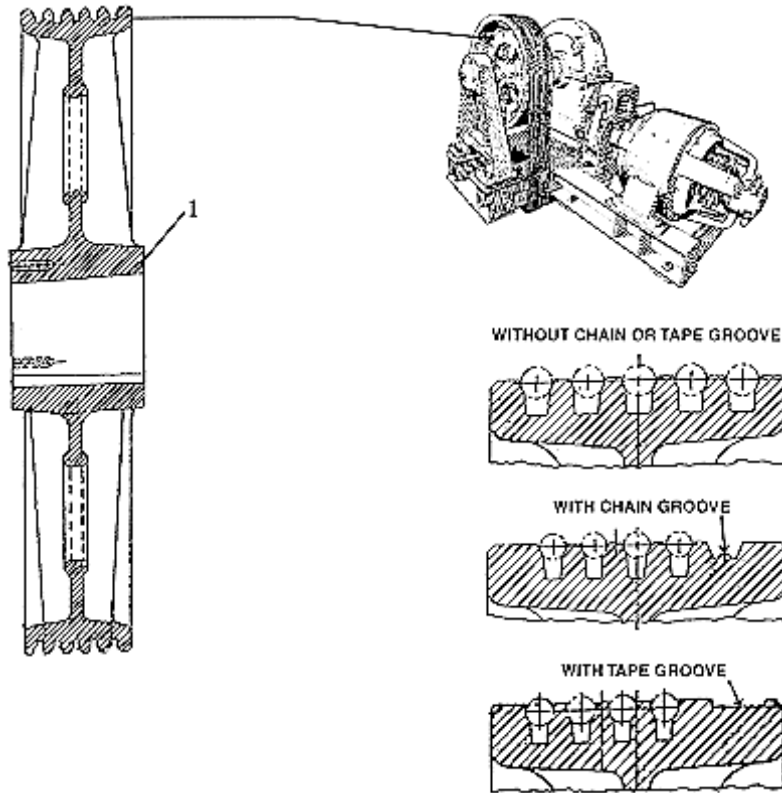


VINTAGE
1934 to 1978
Part # or ML

Ref. #	Brake Type	Motor Type	Complete Coupling	Female Part # (Ref.)	Male Part # (Ref.)	"T" Dim.	"A" Dia.		
1	9D	60ES or 63G	216G7	216G2	216C1	0.25"	1.3125"		
		83ES or 95ES	216G9	216G2	216C3	0.25"	1.625"		
		77G	216G11	216G2	216C5	0.25"	1.875"		
		2-1/2 AC	216G7		216C1		1.3125"		
		3 AC or 3-3/4 AC	216G8		216C2		1.4375"		
		63G or 5AC	216G7	International Division Only!!					
		2	7D	2-1/2 AC	216B11	216B4	216A5	0.25"	1.3125"
				3 AC	216B14		216A6		1.4375"
63G	216B11			216A5	1.3125"				
	216B18			216A8	1.125"				
77G	216B21			216A10	1.875"				

SPL 06-6119A - #1 SWT Machine Yonkers And Hamilton Manufacture (with Roller Bearing Sheaveshaft)

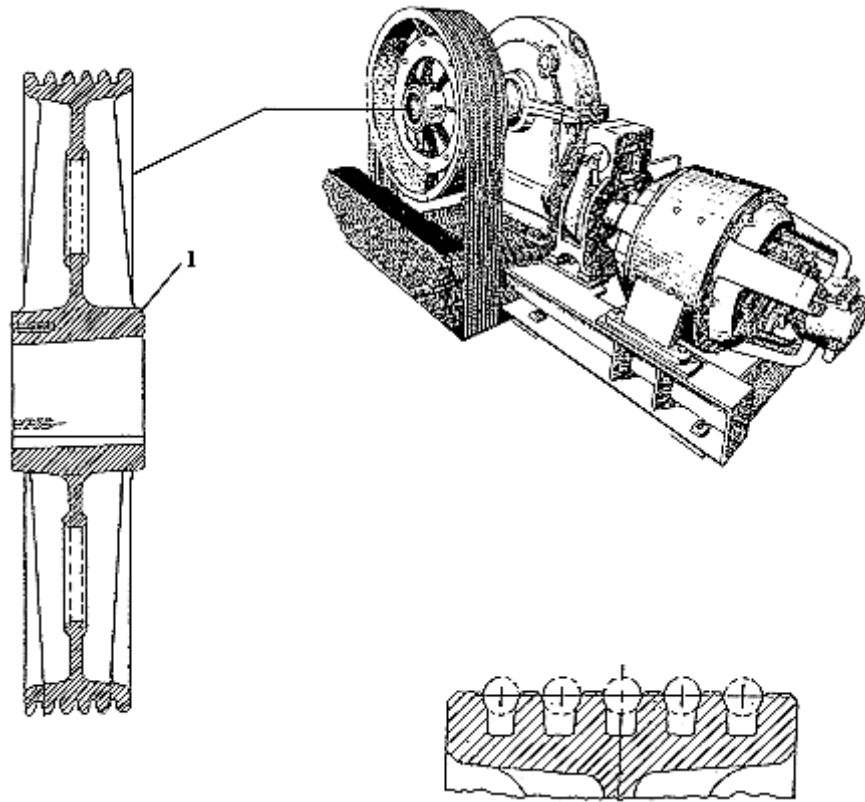
Page 16 - DRIVE SHEAVE; INBOARD SHEAVE



VINTAGE									
1934 to 1978									
Part # or ML					Description				
Ref. #	With Grooving Type				Sheave Diameter	Ropes		Chain/Tape Groove	
	30° Prog.	90°	105°	42°		#	Æ		
1	260W2	260W6	260W10	260W14	24"	4	1/2"	W/O	
	N/A	RX260W500	RX260W501	N/A		3	5/8"		
	260W4	260W8	260W12	260W16		4	1/2"		
	260W21	260W23	260W25	260W27	5/8"		TAPE		
	260W29	260W30	260W31	260W32	27"	5/8"	W/O		
	260W22	260W24	260W26	260W28			TAPE		
	N/A	260W17	260W18	N/A	5	1/2"	W/O		
	N/A	260W19	260W20	N/A		5/8"			
	260AB13	260AB14	260AB15	260AB16	30"	4	1/2"	CHAIN	
	260AB5	260AB6	260AB7	260AB8			5/8"		
	260AB21	260AB22	260AB23	260AB24		5	1/2"	W/O	
	N/A	260AB17	260AB18	N/A			5/8"		
	N/A	260AB19	260AB20	N/A			4		1/2"
	260AR5	260AR6	260AR7	260AR8		5/8"			
	260AR1	260AR2	260AR3	260AR4					

SPL 06-6119A - #1 SWT Machine Yonkers And Hamilton Manufacture (with Roller Bearing Sheaveshaft)

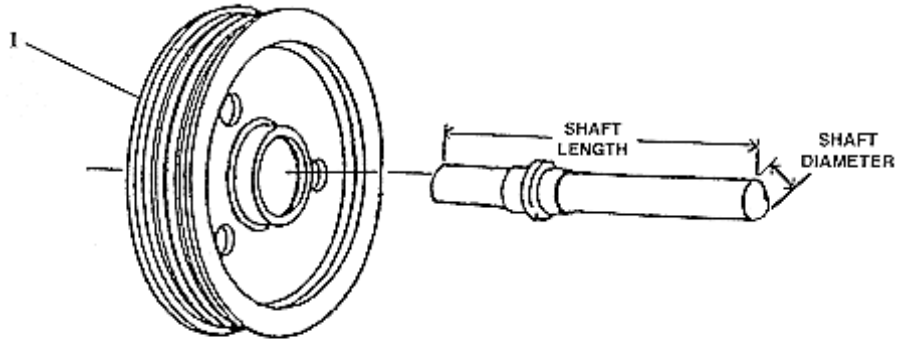
Page 17 - DRIVE SHEAVE; OVERHUNG SHEAVE (MACHINE BELOW)



VINTAGE						
1934 to 1978						
Part # or ML						
Ref. #	With Grooving Type			Sheave Diameter	Description	
	30° Prog.	90°	105°		#	Æ
	260AN1	260AN2	260AN3	24"	3	1/2"
	260AN4	260AN5	260AN6		4	
	260AN7	260AN8	260AN9		5	
	260AL1	260AL2	260AL3	27"	3	
1	260AL7	260AL8	260AL9		4	
	260AL13	260AL14	260AL15		5	
	260AL4	260AL5	260AL6	30"	3	
	260AL10	260AL11	260AL12		4	
	260AL16	260AL17	260AL18		5	

SPL 06-6119A - #1 SWT Machine Yonkers And Hamilton Manufacture (with Roller Bearing Sheaveshaft)

Page 18 - DEFLECTOR SHEAVE

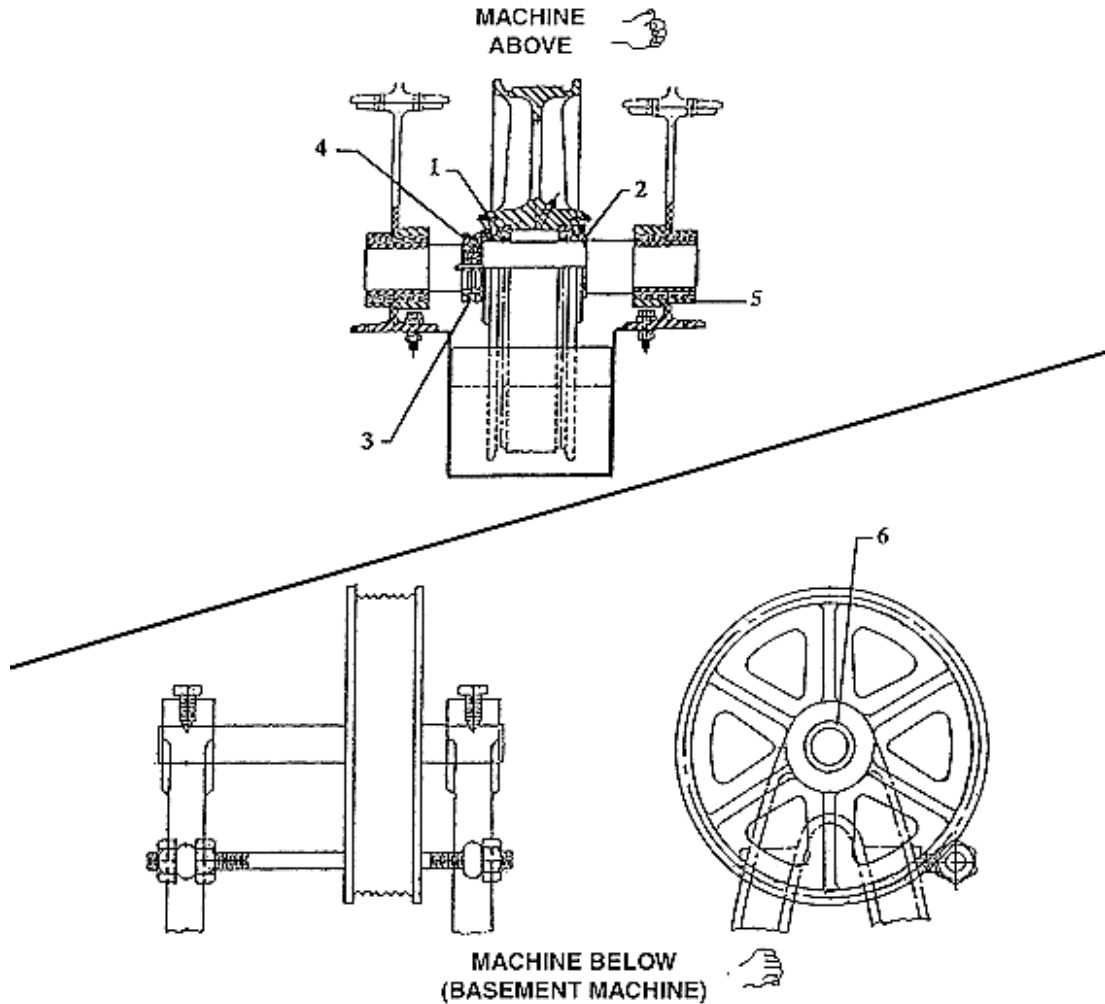


👁 Page 19 for Deflector Sheave Sundries

Ref. #	VINTAGE		Description						
	Part # or ML	1934 to 1978	Sheave Diameter	Ropes #	Æ	Shaft Diameter	Shaft Length	Shaft Part #	Assembly Type
1	263AD5	26"	4	1/2"	2.875"	23.313"	495AV3	6119BG	
	263AY5					24.75"	495CG2	6119CP	
	263AD6					23.313"	495AV3	6119BG	
	263AY1					24.75"	495CG2	6119CP	
	263AY2		6	5/8"		23.313"	495AV3	6119BG	
	263AD7		5			24.75"	495CG2	6119CP	
	263AY3		6			2.753"	20.875"	C495AB2	C6328C
	263AY4		4			2.875"	19.313"	B495E2	D6328A
	263D1		5			2.875"	16.938"	A495E2	C6328A
	263D2		6			2.875"	24.75"	495CG2	6119CP
	263D3	4	2.753"	20.875"	C495AB2	C6328C			
	A263E3	5	2.875"	19.313"	B495E2	C6328A			
	A263E1	6	2.875"	16.938"	A495E2	C6328A			
	A263E2	4	30"	5/8"	2.875"	19.313"	B495E2	C6329	
	Contact OSC	3.00"				29.938"	495BX2	RX6328D	

SPL 06-6119A - #1 SWT Machine Yonkers And Hamilton Manufacture (with Roller Bearing Sheaveshaft)

Page 19 - DEFLECTOR SHEAVE SUNDRIES

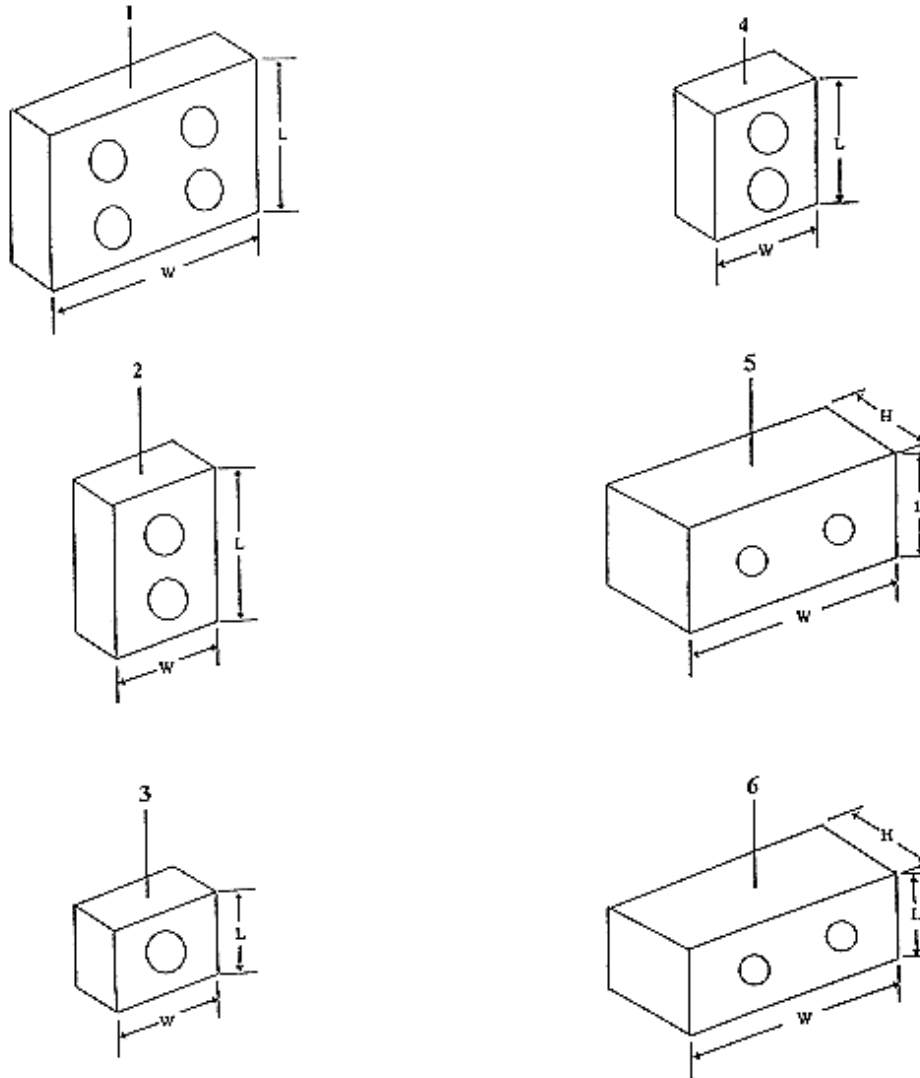


NOTE: To determine shaft type, find deflector sheave on Page 18.

VINTAGE								Description
1934 to 1978								
Part # or ML								
Shaft Type								
Ref. #	495AV3	495CG2	B495E2	495BX2	C495AB2	B495E2	A495E2	
1	N/A	209B11						Bearing, Roller For order specify 2
2		462JA1						Spacer, Bearing
3		130AA3						Washer, Tabbed
4		72BV3						Nut, Bearing Retainer
5	N/A			310BE1		N/A		Bushing, Rubber Isolated
6	321AN2	N/A						Bushing, Bronze

SPL 06-6119A - #1 SWT Machine Yonkers And Hamilton Manufacture (with Roller Bearing Sheaveshaft)

Page 20 - SOUND ISOLATION EQUIPMENT



VINTAGE 1934 to 1978		
Ref. #	Part # or ML	Description
1	310BE1	Isolation, Sound, Rectangular, 6" Length x 6" W, (4) 1" Dia. Holes
2	310BE2	Isolation, Sound, Rectangular, 6" Length x 3" W, (2) 1" Dia. Holes
3	310BE3	Isolation, Sound, Rectangular, 3" Length x 3" W, (1) 1" Dia. Holes
4	310BE4	Isolation, Sound, Rectangular, 5" Length x 3" W, (2) 1" Dia. Holes
5	310BL1	Isolation, Block, Wood, 4" Length x 6" W x 3" H, (2) 0.565" Dia. Holes
6	310FV1	Isolation, Block, Wood, 3" Length x 6" W x 3" H, (2) 0.563" Dia. Holes