

# SPL 06-6176A - No. 2 SWT Machine Yonkers & Hamilton Manufacture (With Roller Bearing Sheaveshaft)

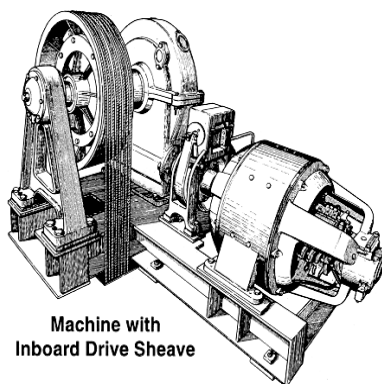
Unpublished Work - © Otis Elevator Company. Any unauthorized reproduction, disclosure, or distribution of copies or content by any person of any portion of this work may be a violation of Copyright Law of the United States of America. All rights reserved.

March 1998

Unpublished Work - © Otis Elevator Company. Any unauthorized reproduction, disclosure, or distribution of copies or content by any person of any portion of this work may be a violation of Copyright Law of the United States of America. All rights reserved.

**NOTE:** All vintage dates in this leaflet are approximate and to be used for reference only.

## Page 1



Machine with  
Inboard Drive Sheave

### NAO:

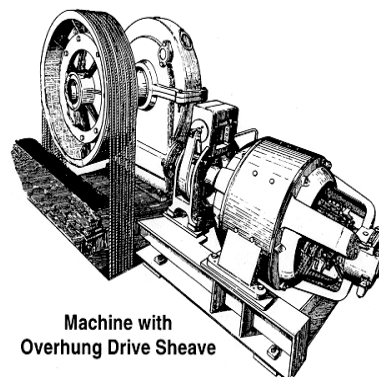
6176BX (early 1963)  
A6176BX (1963 - 1964)  
B6176BX (1964 - 1965)  
C6176BX (1965 - prod. end)

### NAO:

6176A (1934 - 1935)  
A6176A (1935 - 1943)  
B6176A (1943 - 1947)  
C6176A (1947 - 1961)  
D6176A (1961 - 1963)  
E6176A (1963 - 1964)  
F6176A (1964 - 1965)  
G6176A (1965 - prod. end)

### INTERNATIONAL:

6176BM (1955 - 1961)  
A6176BM (1961 - 1963)  
B6176BM (1963 - 1964)  
C6176BM (1964 - 1965)  
D6176BM (1965 - prod. End)



Machine with  
Overhung Drive Sheave

**SPL 06-6176A - No. 2 SWT Machine Yonkers & Hamilton Manufacture (With Roller Bearing Sheaveshaft)**

**Page 2 – History**

<b>History</b> <b>06-6176A/BM/BX</b> <b>First Published: March 1998</b>		<b>No. 2 SWT Machine</b>
---	--	--------------------------

<b>REVISED DATE</b>	<b>RESPONSIBLE ENGINEER</b>	<b>PRIMARY REASON FOR REVISION</b>
March 1998	Rob Choquette	SPL does not exist. Create new SPL and add history page.

**Leaflet Description**

This spare parts leaflet is intended to supply all necessary ordering data for the NAO-produced roller bearing sheaveshaft version of the No. 2 SWT machine, also known as the "6176" or "27BT" machine. This version of the No. 2 machine was introduced about 1934 and produced in NAO until the late 1970s. Production took place in the Yonkers, USA plant up to 1965, and continued in the Hamilton, Canada plant until the late 1970s. When the early sleeve bearing sheaveshaft version of the No. 2 machine was succeeded by this new roller bearing type, the new machine was known as the **6176 SWT** in order to differentiate it from its predecessor. In the late 1950s, a new machine naming convention was developed and the No. 2 machine was called the 27BT machine. Note that the post-1934 No. 2 SWT, the 6176 SWT, and the **27BT** are all the same machine.

Versions of the No. 2 SWT machine have also been produced by other Otis operations including the UK, Germany, and Brazil. Although these were derivatives of the NAO design, they were produced to different drawings, and parts are NOT interchangeable with the NAO version. The term "**International**" as used in this leaflet refers to the NAO "exported" version of the machine, intended for international contracts but supplied by NAO Yonkers Works. The international versions of the machine are not expected to be found in NAO, but may be found in ETO or elsewhere in the world.

The **6176 SWT** version of the machine had two distinguishing features compared to the earlier sleeve bearing design. First, the sheaveshaft is supported on roller bearings versus poured babbitt sleeve bearings. Second, the wormshaft thrust bearing is of the "angular contact" ball bearing type, an improvement over the earlier Otis manufactured flat "plate" type thrust bearing.

**Sheaveshaft Bearings:** Tapered roller bearings were used on units supplied in NAO (except on overhung sheave basement machines). Spherical roller sheaveshaft bearings were supplied on "International" units.

**Wormshaft:** The wormshaft utilizes either an "early" or "late" type of angular contact thrust bearing, depending on the vintage. The "early" and "late" thrust bearing types are not interchangeable. See page 8 for illustration of distinguishing features.

## SPL 06-6176A - No. 2 SWT Machine Yonkers & Hamilton Manufacture (With Roller Bearing Sheaveshaft)

### Page 3 - History (Continued)

**Early Type Thrust Bearing:** The "early" type was supplied from about 1934 to 1955 and originally used 207W/6800DP-type thrust bearings. For service replacement, the "early" type now uses a 2700AAN kit with a different bearing, sleeve, and adapter parts (This "early" kit is also usable on some pre-1934 No. 2 SWT machines. See Spare Parts Leaflet C-627 for more information). Distinguishing features: Domed cover, castle nut, and a shaft diameter of 1.499 inches.

**Late Type Thrust Bearing:** The "late" type was supplied from about 1955 until the end of production and uses A6800AN-type thrust bearings. All parts for the "late" thrust bearing have remained the same and are available for service replacement. **Distinguishing features:** Flat cover, bearing nut and tabbed washer, and a shaft diameter of 1.574 in.

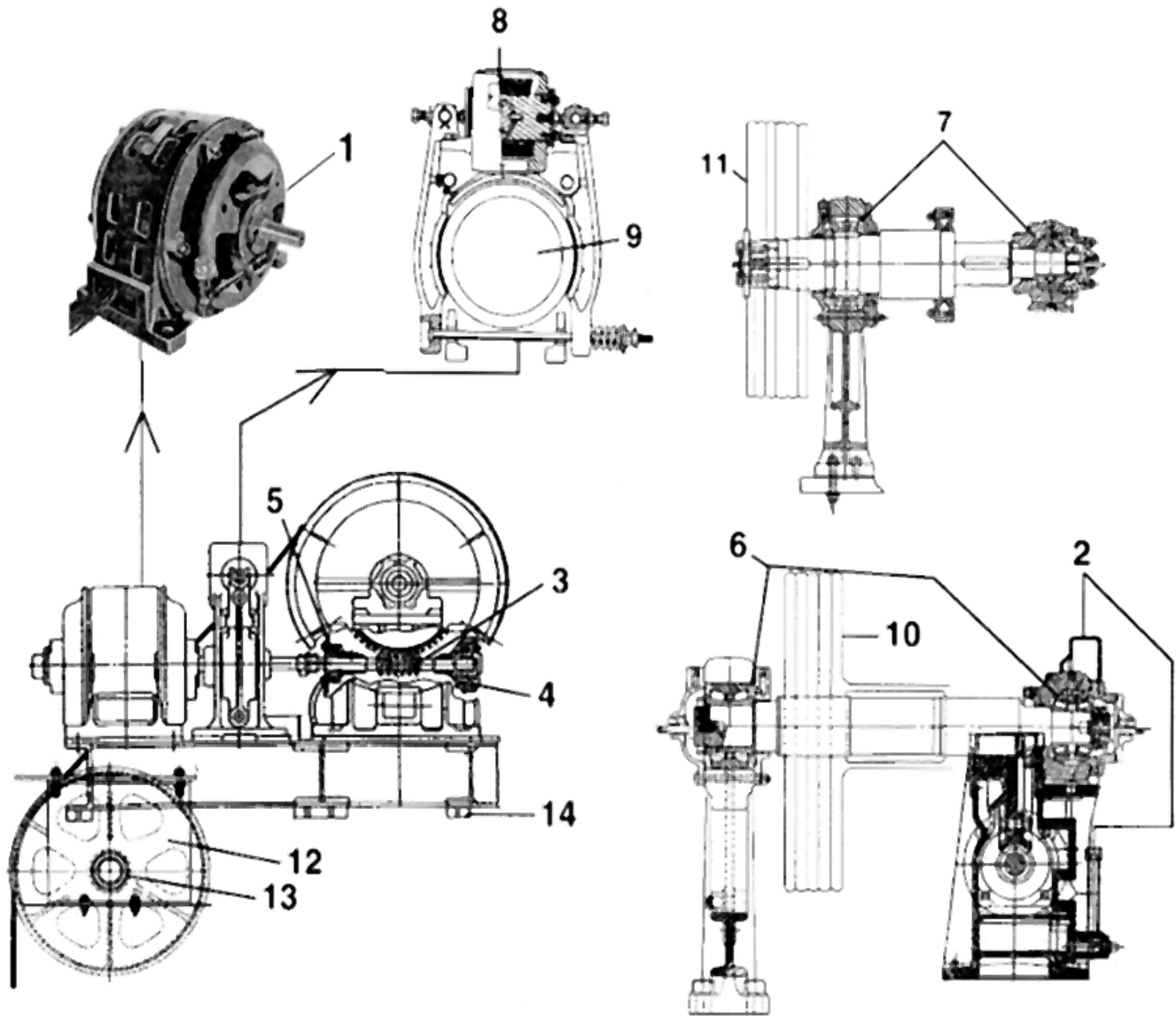
**Note:** Service wormshafts supplied since 1955 use the "late" type thrust bearing.

Note that **brakes** and **motors** are separate components that are covered in their own leaflets as indicated. In addition, although it is not specifically mentioned, this leaflet can also be used for special 6176 versions such as escalator or externally geared units. If you have a pre-1934 machine or you are unsure of the correct parts to order, consult your records or contact OSC for information.

This Spare Parts Leaflet (SPL) is prepared to assist you in determining the Lowest Replaceable Units (LRU) supported by the Otis Service Center for the standard version of the product titled on the preceding page. The parts are chosen by Otis associates from: Engineering, Field Engineering, Service Engineering, and Manufacturing. We attempt to make part identification as easy as possible. The SPL, however, cannot be all inclusive. Elevator and escalator contracts classified as either "special" or "custom" are not addressed. Alternative sources of information such as: the Contract Folder, Technical Information Publications, Field Education Articles, Construction Letters, etc. may give the information you are after. You live in the real world of maintaining your elevator and escalator contracts. On a daily basis, situations arise regarding parts identification and at times, for some reason, the part you need is not in the SPL. If you think a standard part not listed should be -- let us know. We will respond.

SPL 06-6176A - No. 2 SWT Machine Yonkers & Hamilton Manufacture (With Roller Bearing Sheaveshaft)

Page 4 - Table of Contents

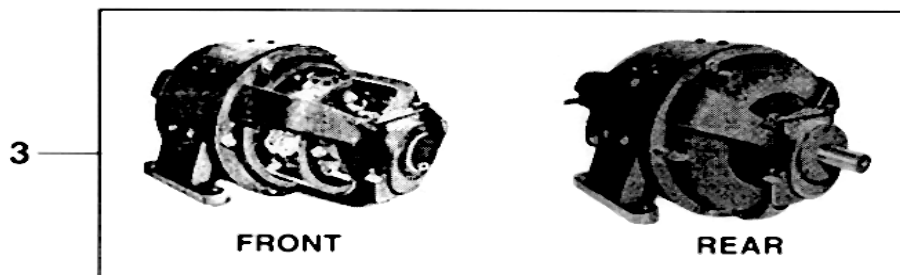
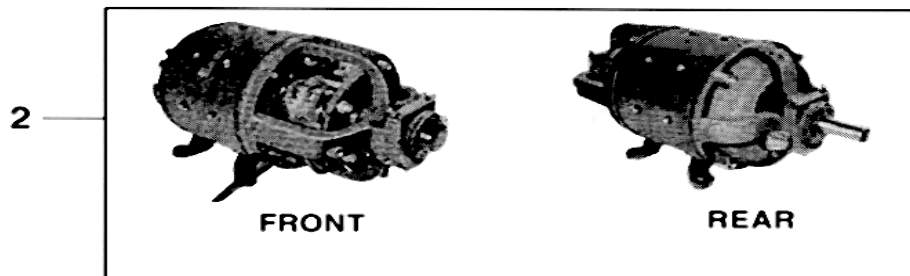
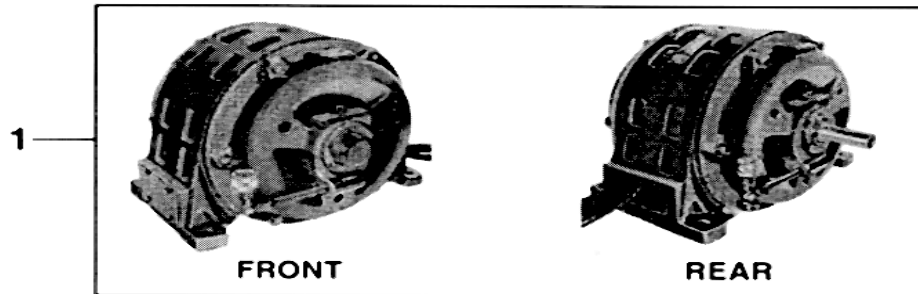


**SPL 06-6176A - No. 2 SWT Machine Yonkers & Hamilton Manufacture (With Roller Bearing Sheaveshaft)**

<b>Ref. No.</b>	<b>Part or ML</b>	<b>Description</b>
1	See p. 5	Motors, AC & UMV
2	See p. 6	Upper & Lower Gearcase
3	See p. 7	Worm & Gear Sets
4	See p. 8	Wormshaft Parts - Part 1; Thrust Bearing & Outside Housing
5	See p. 9	Wormshaft Parts - Part 2; Inside Housing & Packing
6	See p. 10-11	Sheaveshaft Parts, Inboard Sheave
7	See p. 12-13	Sheaveshaft Parts, Overhung Sheave
8	See SPL C-959G	Brake, 9D
	See SPL C-960E	Brake, 11D
9	See p. 14	Brake Coupling, 9D & 11D Brake
10	See p. 15	Drive Sheave, Inboard Sheave
11	See p. 16	Drive Sheave, Overhung Sheave
12	See p. 17	Deflector Sheaves
13	See p. 18	Deflector Sheave Sundries
14	See p. 19	Sound Isolation Equipment

SPL 06-6176A - No. 2 SWT Machine Yonkers & Hamilton Manufacture (With Roller Bearing Sheaveshaft)

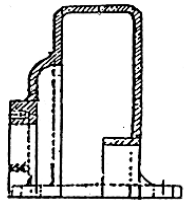
Page 5 - AC & UVM Motors



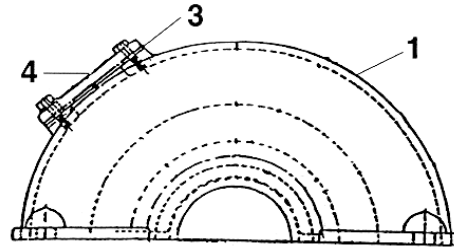
Ref. No.	Vintage	
	1934 to prod. end	
Ref. No.	Part or M.L.	Description
1	See SPL C-1004	Motor, Type 83ES, AC, 1- and 2-speed
	See SPL C-207A (1-speed) or C-498A (1- & 2-speed)	Motor, Type 10AC, 1- and 2-speed
	SPL C-207A (1-speed) or C-283A (2-speed) or C-498A (1- & 2-speed)	Motor, Type 17AC, 1- and 2-speed
2	See SPL C-999B	Motor, Type 77G, DC
3	See SPL C-1000B	Motor, Type 89F, DC
	See SPL C-1001A	Motor, Type 98G, DC

SPL 06-6176A - No. 2 SWT Machine Yonkers & Hamilton Manufacture (With Roller Bearing Sheaveshaft)  
Bearing Sheaveshaft)

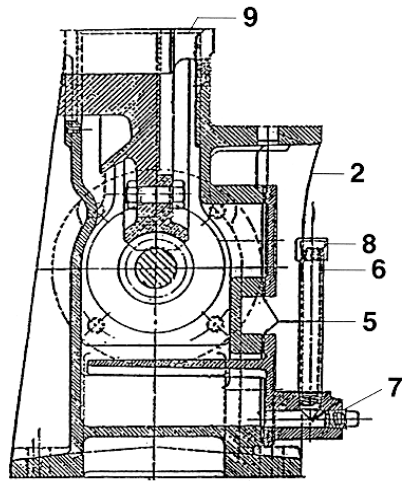
Page 6 - Upper & Lower Gearcase



Upper Gearcase  
"End View"



Upper Gearcase  
"Side View"



Lower Gearcase  
"End View"

**\*NOTE:** Upper and lower gearcases are not available as spare parts. Part numbers specified are for reference only. Base part number can be obtained on upper and lower gearcase castings (i.e., "B330Z").

**SPL 06-6176A - No. 2 SWT Machine Yonkers & Hamilton Manufacture (With Roller Bearing Sheaveshaft)**

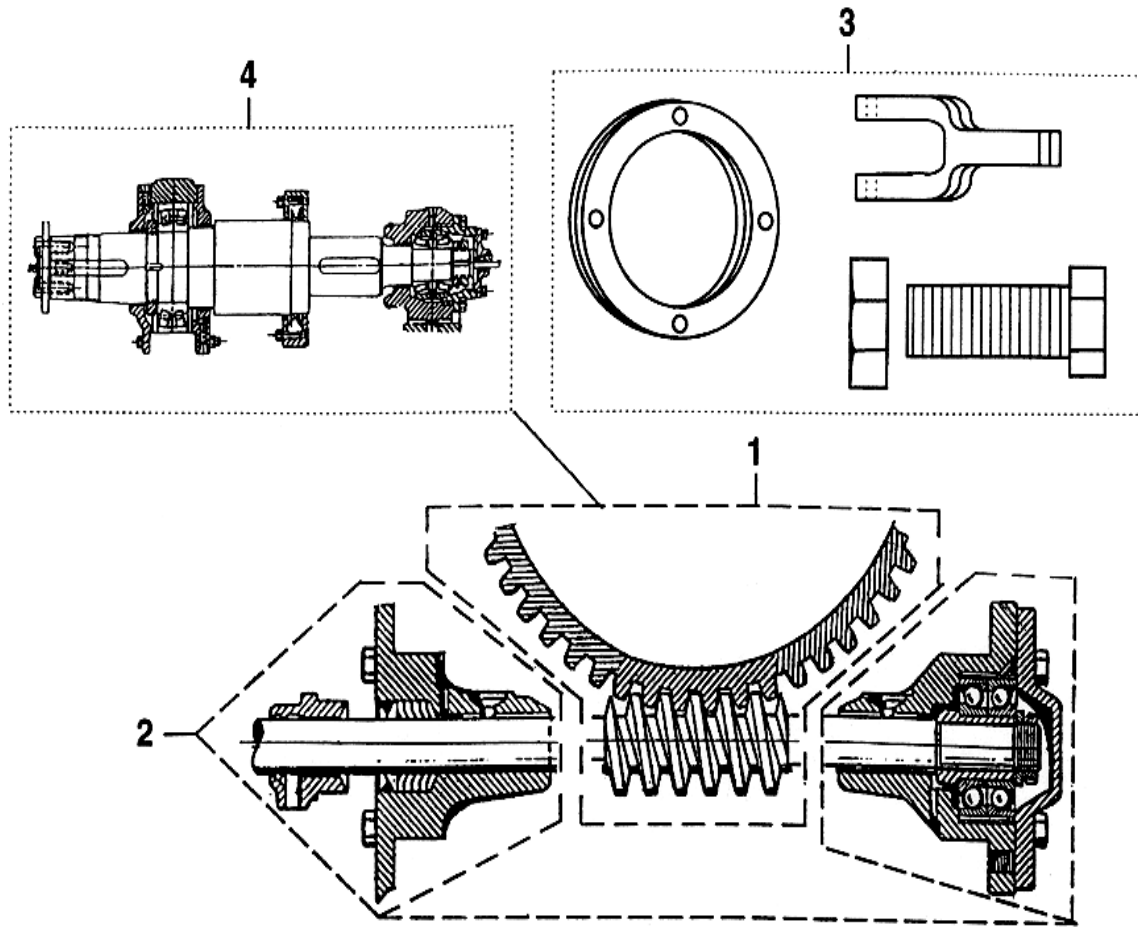
Page 6 - Upper & Lower Gearcase

				<b>VINTAGE</b>		
				1934 to 1963	1963 to 1965	1965 to Prod. End
<b>Ref. No.</b>	<b>Part or M.L.</b>			<b>Description</b>		
1	<u>330W2</u> or <u>330R2</u>			Gearcase, Upper (Ref.)		
2	A330Z1	B330Z1	C330Z1	Gearcase, Lower (Ref.)		
3	376KA3	376KA1		Gasket, Inspection Cover		
4	346KV1	<del>346LG1</del>		Cover, Steel Inspection		
	N/A	AAA346AWH8		Cover, Clear Plastic		
5	376BC1			Gasket, Inspection Cover		
6	808908	N/A		Pipe, Oil Height Gauge 6 1/2 in. L		
	N/A	377KA6		Pipe, Oil Height Gauge 8 1/2 in. L		
		377KA4		Pipe, Oil Height Gauge 5 1/2 in. L		
7	Local Purchase			Pipe, 1/2 in. Standard Steel Close Nipple		
8	89835			Cap, 1/2 in. Female Pipe		
9	376BH1			Gasket, Gearcase Main, Order 2		



SPL 06-6176A - No. 2 SWT Machine Yonkers & Hamilton Manufacture (With Roller Bearing Sheaveshaft)

Page 7 - Worm & Gear Sets



**NOTE:** Three wormshaft sundries kits are required with worm and gear changeout: Wormshaft sundries (Outside & inside housing parts complete see ref. 2 ), and gear bolts and shims (see ref. 3).

Sheaveshaft sundries also recommended (see ref. 4).

**SPL 06-6176A - No. 2 SWT Machine Yonkers & Hamilton Manufacture (With Roller Bearing Sheaveshaft)**

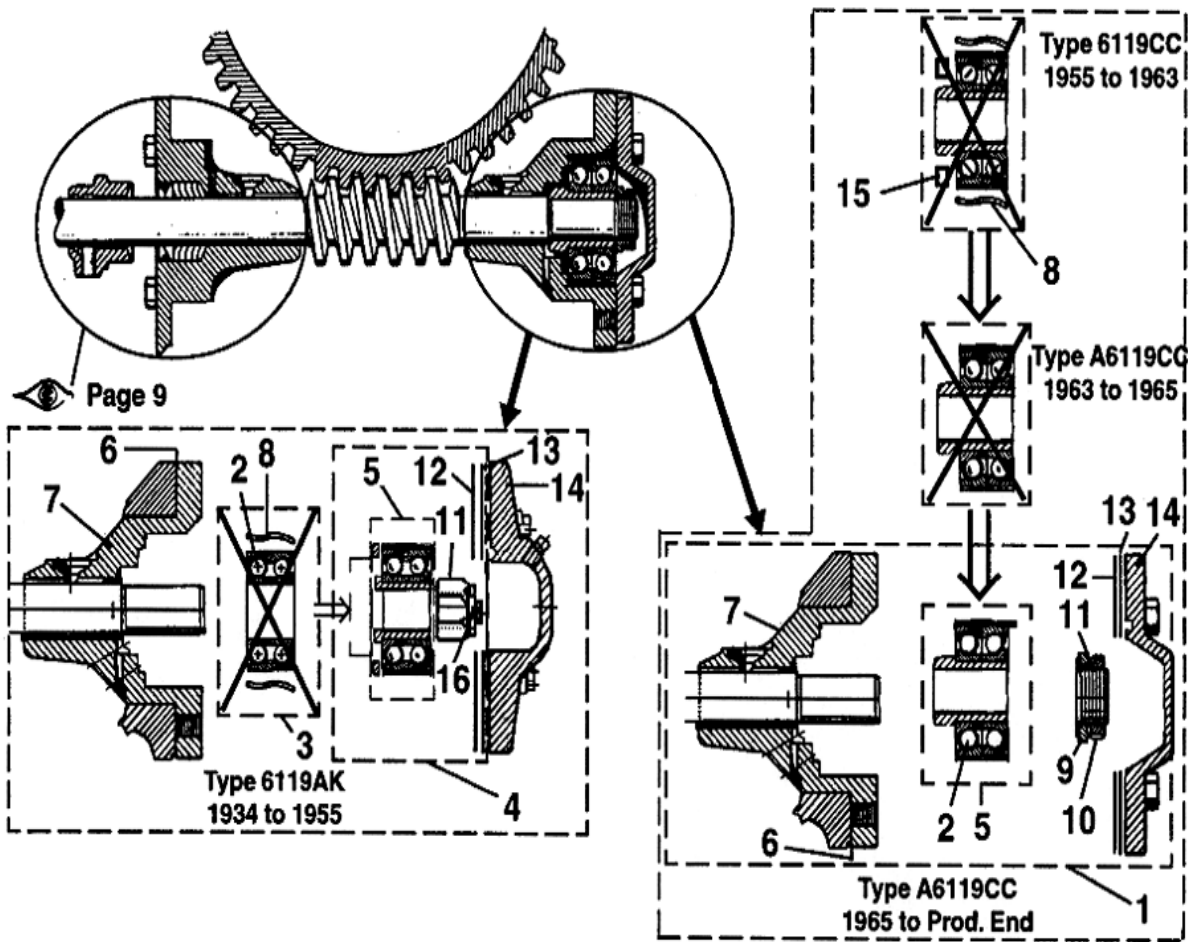
**Page 7 - Worm & Gear Sets**

		VINTAGE <sup>^</sup>				
		1964 to Prod. End	1954 to 1964	1934 to 1954	Canadian (Hamilton)	
Ref. No.	Gear Ratio	Current P/N	P/Ns in these columns are superseded to current P/Ns			Description
1	11-7/8:1	490FH2/200AP1	<del>Same as Current</del>	N/A	Consult OSC	<b>Worm and Gear Set.</b> All Worm and Gears are supplied as matched sets from OSC to guarantee predictable installation and life.
	13-4/7:1	490FJ2/200AP2	490FJ2/200AN1	490BM2/200AN1		
	15-5/6:1	490EW2/200AP3	490EW2/A200KA1	B490FB2/A200KA1		
	21-1/4:1	490EY2/200AP4	490EY2/B200W1	C490EA2/B200W1		
	28-1/3:1	490FC2/200AP6	490FC2/B200GA1	C490BB2/B200GA1		
	31-2/3:1	490FD2/200AP5	490FD2/B200T1	C490GA2/B200T1		
	42-1/2:1	490FE2/200AP7	490FE2/A200Y1	B490DA2/A200Y1		
	59:1	490FF2/200AP8	490FF2/A200P1	A490HA2/200P1		
	65:1	490FG2/200AP9	490FG2/A200R1	B490CA2/A200R1		
	84:1	6800AD14/80146 4	<del>Same as Current</del>	185561/801464		
2	Wormshaft Sundries; Required with worm and gear changeout (see note): See pp. 8 & 9, ref. 1					
3	-----	AAA20020B12	Kit, gear bolts, nuts, and shims required to set gear height & backlash; Required with worm and gear changeout (see note).			
4	Sheaveshaft Sundries (Bearings): Recommended with worm and gear changeout: See pp. 10, Ref. 1 (machines with inboard sheave) or p. 12, Ref. 1 (machine with overhung sheave).					

<sup>^</sup> Vintage dates and superseded part numbers are for reference only. If unclear consult OSC.

SPL 06-6176A - No. 2 SWT Machine Yonkers & Hamilton Manufacture (With Roller Bearing Sheaveshaft)

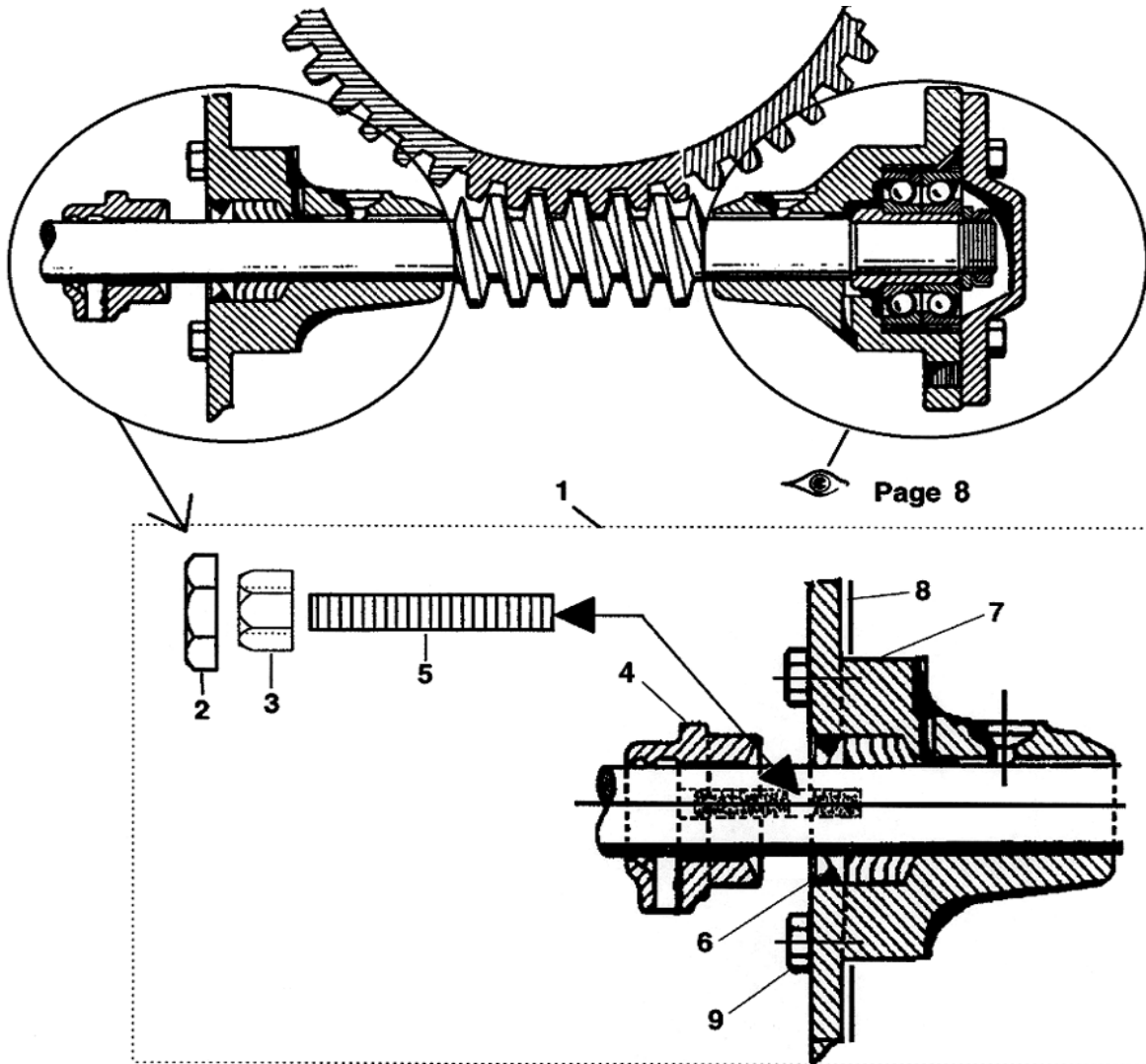
Page 8 - Wormshaft Parts - Part 1: Thrust Bearing & Outside Housing Parts



**SPL 06-6176A - No. 2 SWT Machine Yonkers & Hamilton Manufacture (With Roller Bearing Sheaveshaft)**

**Page 8 - Wormshaft Parts - Part 1: Thrust Bearing & Outside Housing Parts**

				Vintage		
				6176AM 1934 to 1955	6176BD 1955 to 1963	A6176BD and RXA6176BD 1963 to Prod. End
Ref. No.	P/N or M.L.			Description		
1	N/A	AAA20020B1		Kit, Thrust Bearing Complete w/Housing & Cover		
2	207W3*	207AR5**		Thrust Bearing (for *, use 2700AAN3; for **, A6800AN2)		
3	6800DP6*	N/A		Assembly, Thrust Bearing w/Anti-Rotation Tab (for *, use 2700AAN3)		
4	2700AAN3	N/A		Kit, Initial Thrust Bearing Replacement w/Sleeve		
5	6800DP16	A6800AN2		Kit, Subsequent Thrust Bearing Replacement		
6	376T6			Gasket, Thrust Housing (0.005 in. Paper)		
7	396AV1	396DR1		Housing, Wormshaft Outside Thrust		
8	93AR1		N/A	Spring, Anti-Rotation (Quantity 6)		
9	N/A	462W48		Disc, Thrust Bearing Retainer		
10	N/A	130AA10		Washer, Tabbed, Bearing Nut		
11	N/A	72BV7		Nut, Shaft Bearing, (2.0 in. ID, 2.25 in. OD)		
	72AM2	N/A		Nut, Shaft Hex, (2.25 in. Across Flats)		
	CAA72A2	N/A		Nut, Shaft Hex, (2.50 in. Across Flats)		
12	376T4			Gasket, Housing to Cover (0.003 in. Green)		
13	376T5			Gasket, Housing to Cover (0.0075 in. Clear)		
14	A346FJ1	A346AAD1		Cover, Thrust Bearing		
15	N/A	33D12	N/A	Seal, Oil		
16	1/4 in. Pin	N/A		Pin, Cotter, 1/4 in. x 2 1/2 in.		



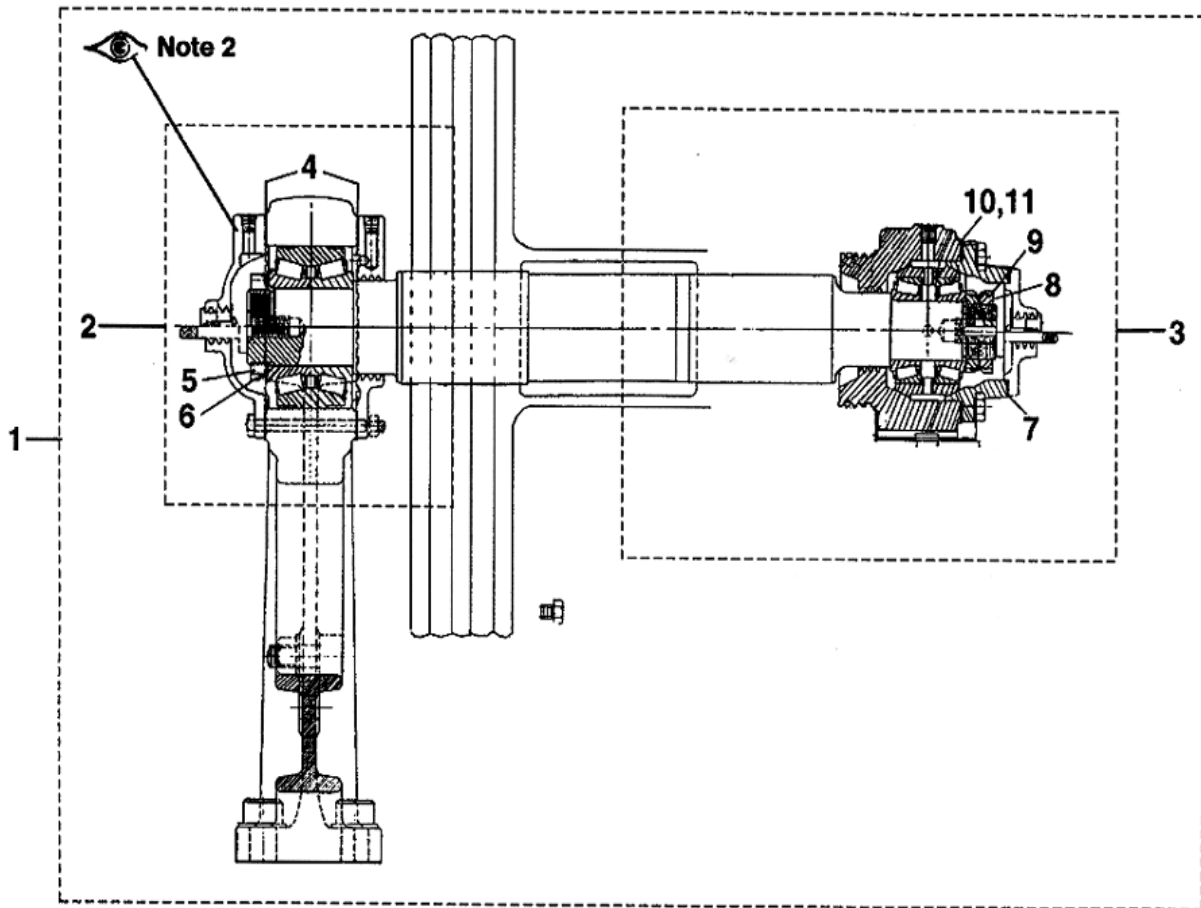
**SPL 06-6176A - No. 2 SWT Machine Yonkers & Hamilton Manufacture (With Roller Bearing Sheaveshaft)**

**Page 9 - Wormshaft Parts - Part 2: Inside Housing & Packing**

Vintage		
1934 to Current		
<b>Ref. No.</b>	<b>P/N or M.L.</b>	<b>Description</b>
<b>1</b>	<b>AAA20020B2</b>	<b>Kit, Inside Housing Parts Complete</b>
<b>2</b>	<b>Nut, Hex Jam, 1/2-13 UNC</b>	<b>Nut, Jam (Quantity 2)</b>
<b>3</b>	<b>Nut, Hex Fin, 1/2-13 UNC</b>	<b>Nut, Hex (Quantity 2)</b>
<b>4</b>	<b>381E1</b>	<b>Gland, Packing</b>
<b>5</b>	<b>96H31</b>	<b>Stud, Threaded, Gland (Quantity 2)</b>
<b>6</b>	<b>182A4</b>	<b>Packing, Complete</b>
<b>7</b>	<b>396AX1</b>	<b>Housing, Inside</b>
<b>8</b>	<b>376T6</b>	<b>Gasket</b>
<b>9</b>	<b>Bolt, Hex Fin , 5/8-11 UNC x 1-3/4</b>	<b>Bolt, Hex (Quantity 6)</b>

SPL 06-6176A - No. 2 SWT Machine Yonkers & Hamilton Manufacture (With Roller Bearing Sheaveshaft)

Page 10 - Sheaveshaft Parts - Inboard Sheave



- NOTES:** 1. International (export) machines use spherical roller bearings vs. tapered roller bearings.
2. Type\_6176A machines have a 8 in. bolt circle on the pedestal stand cover. Type\_6176BM have a 8-5/8 in. bolt circle.

**SPL 06-6176A - No. 2 SWT Machine Yonkers & Hamilton Manufacture (With Roller Bearing Sheaveshaft)**

**Page 10 - Sheaveshaft Parts - Inboard Sheave**

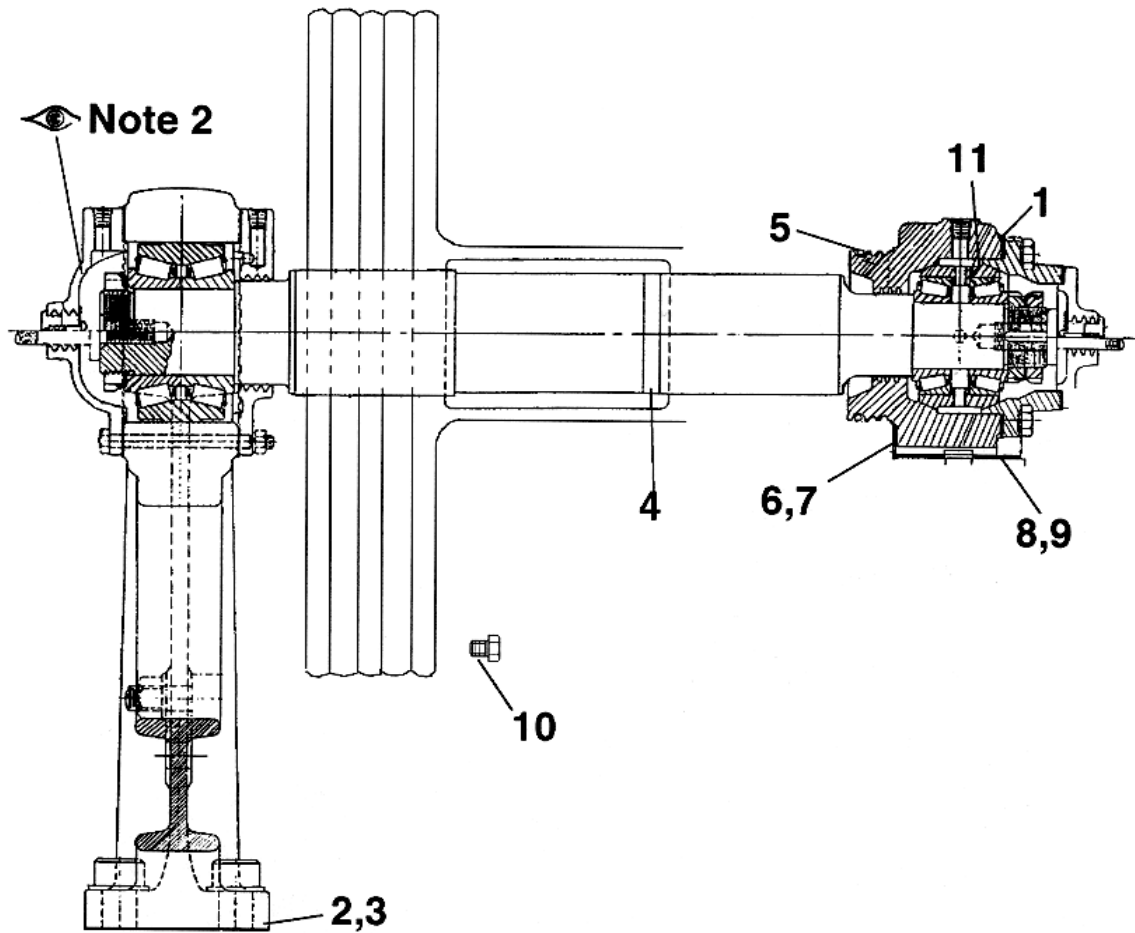
Ref. No.	Vintage (See Note 2)		Description
	Type _6176A NAO; 1934 to Prod. End	Type _6176BM Intn'l Div. Only 1955 to Prod End	
	P/N or M.L.		
1	AAA20020B3	AAA20020B4	Kit, Sheaveshaft Sundries Complete; Recommended for Worm and Gear Changeout. Includes Ref. 2-3 on p. 10 & Ref. 2-9 on p. 11
2	AAA20020B5		Kit, Bearing Replacement, Sheave End, Includes Bearing & Ref. 4-6
		AAA20020B6	Kit, Bearing Replacement, Sheave End, Includes Bearing & Ref. 4
3	AAA20020B7		Kit, Bearing Replacement, Gearcase End, Includes Bearing & Ref. 7-11 on p. 10 & Ref. 1 on p. 11
		AAA20020B8	Kit, Bearing Replacement, Gearcase End, Includes Bearing & Ref. 8, 9, 11
4	376R1	376J15	Gasket, Bearing Stand, Inner & Outer Cover
5	72BV3	N/A	Nut, Bearing
6	130AA3	N/A	Washer, Tabbed, Bearing Nut
7	376H1	N/A	Gasket, End Cover
8	72BV2	72BV13	Nut, Bearing, Order 2
9	130AA2	130AA13	Washer, Tabbed, Bearing Nut
10	255LC1	N/A	Shim, Housing to Cover (0.005 in.), Order 2
11	255LC2	255HB17	Shim, Housing to Cover (0.007 in.), Order (2) 255LC2 or (1) 255HB17

(Sheaveshaft Parts - Inboard Sheave, continued on next page)



SPL 06-6176A - No. 2 SWT Machine Yonkers & Hamilton Manufacture (With Roller Bearing Sheaveshaft)

Page 11 - Sheaveshaft Parts - Inboard Sheave  
(Continued)



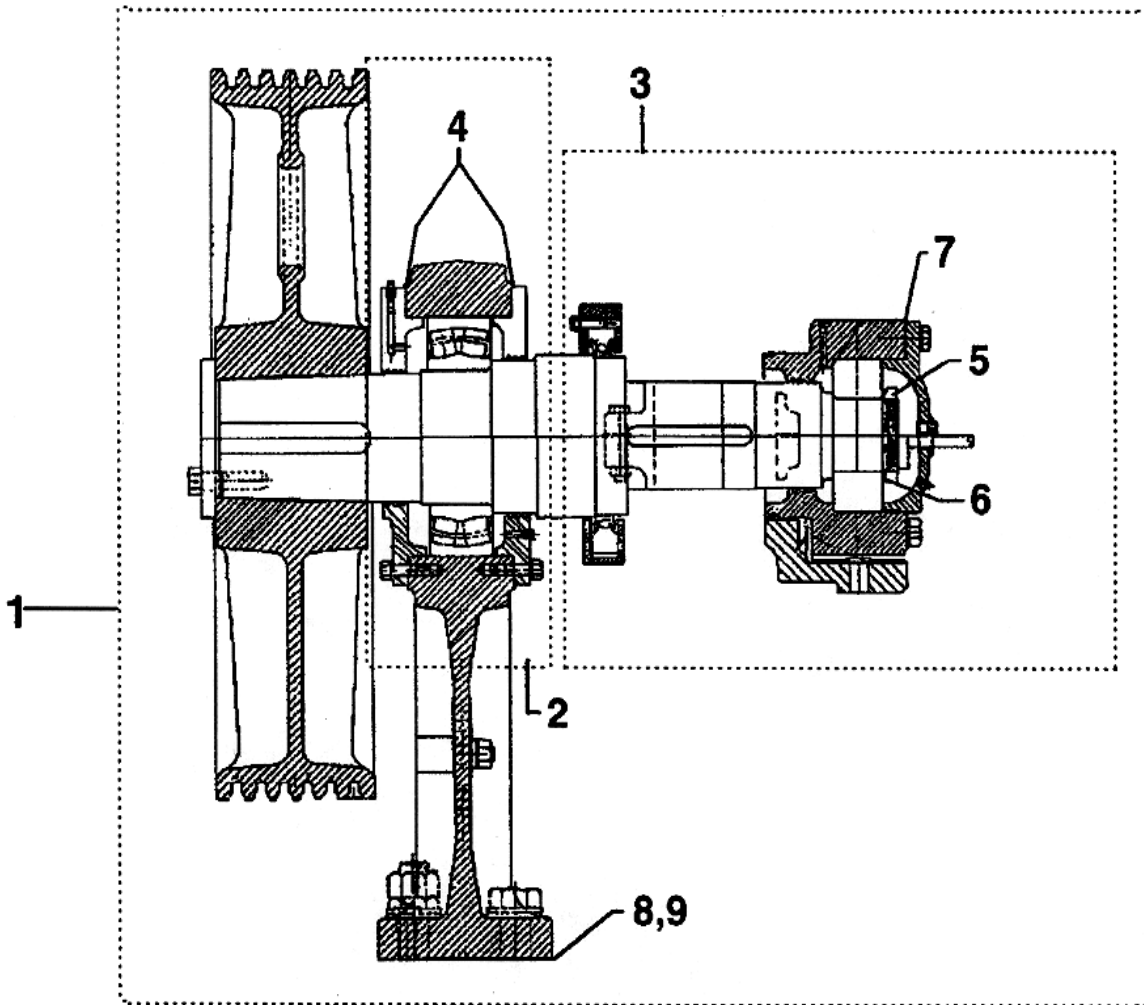
**NOTES:** 1 - International (export) machines use spherical roller bearings vs. tapered roller bearings.

2 - Type\_6176A machines have a 8 in. bolt circle on the pedestal stand cover. Type\_6176BM have a 8-5/8 in. bolt circle.

**SPL 06-6176A - No. 2 SWT Machine Yonkers & Hamilton Manufacture (With Roller Bearing Sheaveshaft)**

Page 11 - Sheaveshaft Parts - Inboard Sheave (Continued)

Ref. No.	Vintage (See Note 2)		Description
	Type _6176A NAO; 1934 to Prod. End	Type _6176BM Intn'l Div. Only 1955 to Prod End	
	P/N or M.L.		
1	255LC3	N/A	Shim, Housing to Cover (0.020 in.), Order 2
2	255KA1		Shim, Vertical, Sheave End Bearing Stand (0.0063 in.), Order 6
3	255KA2		Shim, Vertical, Sheave End Bearing Stand (0.0086 in.), Order 16
4	376BG1		Gasket, Sheaveshaft Bore, Order 4
5	2700B2		Kit, Neoprene Tube Seal, 1/4 in. ID x 24 in. L
6	255YB1		Shim, Lateral, Gear End Bearing Stand (0.006 in.), Order 10
7	255YB2		Shim, Lateral, Gear End Bearing Stand (0.0082 in.), Order 20
8	255HA1		Shim, Vertical, Gear End Bearing Stand (0.006 in.), Order 10
9	255HA2		Shim, Vertical, Gear End Bearing Stand (0.0082 in.), Order 12
10	STANDARD 3/4 in. X 4 1/2 in.		Bolt, Sheave Retaining, Order 8
11	396EA1	N/A	Housing, Bearing (Self-Aligning)

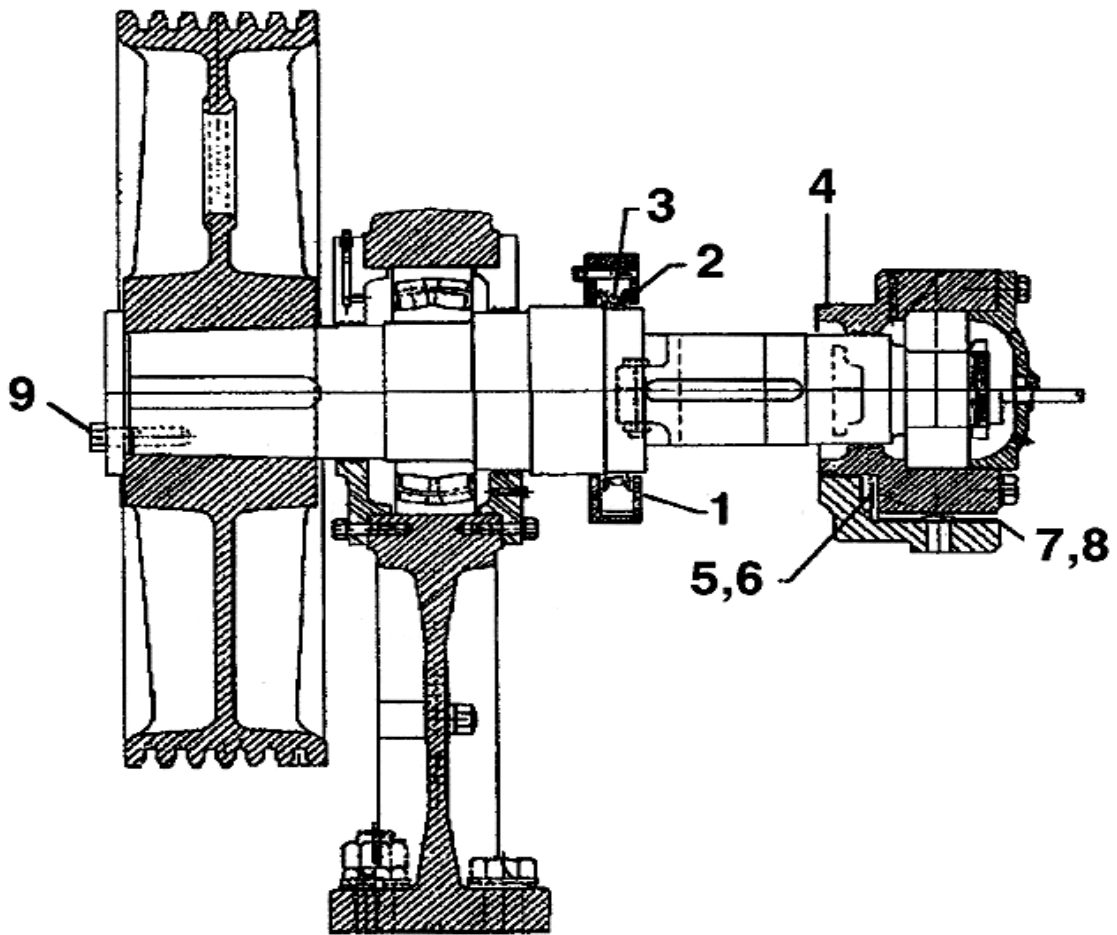


**SPL 06-6176A - No. 2 SWT Machine Yonkers & Hamilton Manufacture (With Roller Bearing Sheaveshaft)**

**Page 12 - Sheaveshaft Parts - Overhung Sheave**

Ref. No.	Vintage	Description
	Type _6176BX_ NAO 1963 to Prod. End	
	P/N or M.L.	
1	AAA20020B9	Kit, Sheaveshaft Sundries Complete; Recommended for Worm and Gear Changeout. Includes Ref. 2,3,8, & 9 on p. 12; & Ref. 1-8 on p. 13
2	AAA20020B10	Kit, Bearing Replacement, Sheave End, Includes Bearing & Ref. 4
3	AAA20020B11	Kit, Bearing Replacement, Gearcase End, Includes Bearing & Ref. 5, 6, 7
4	376T16	Gasket, Bearing Stand, Inner & Outer Cover, Order 2
5	72BV13	Nut, Bearing
6	130AA13	Washer, Tabbed, Bearing Nut
7	255HB17	Shim, Housing to Cover (0.0075 in.)
8	255LA16	Shim, Vertical, Sheave End Bearing Stand (0.006 in.), Order 10
9	255LA17	Shim, Vertical, Sheave End Bearing Stand (0.0082 in.), Order 20

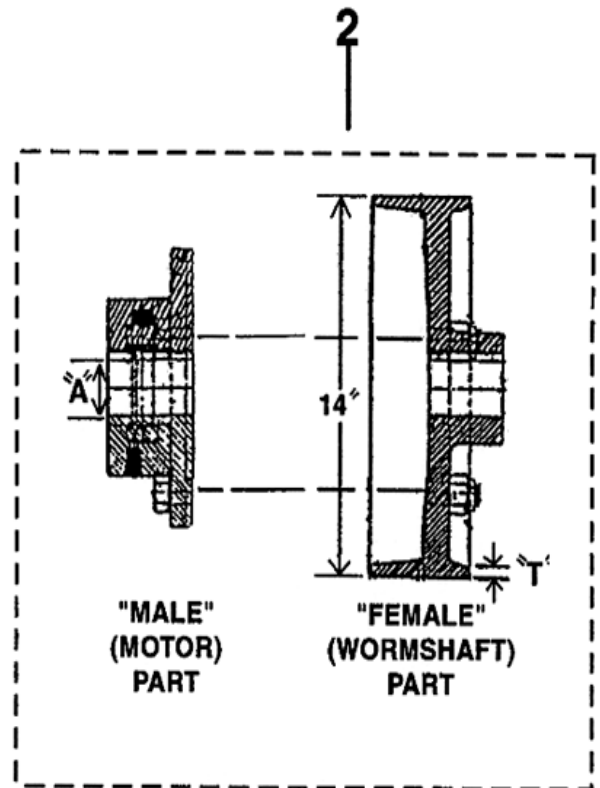
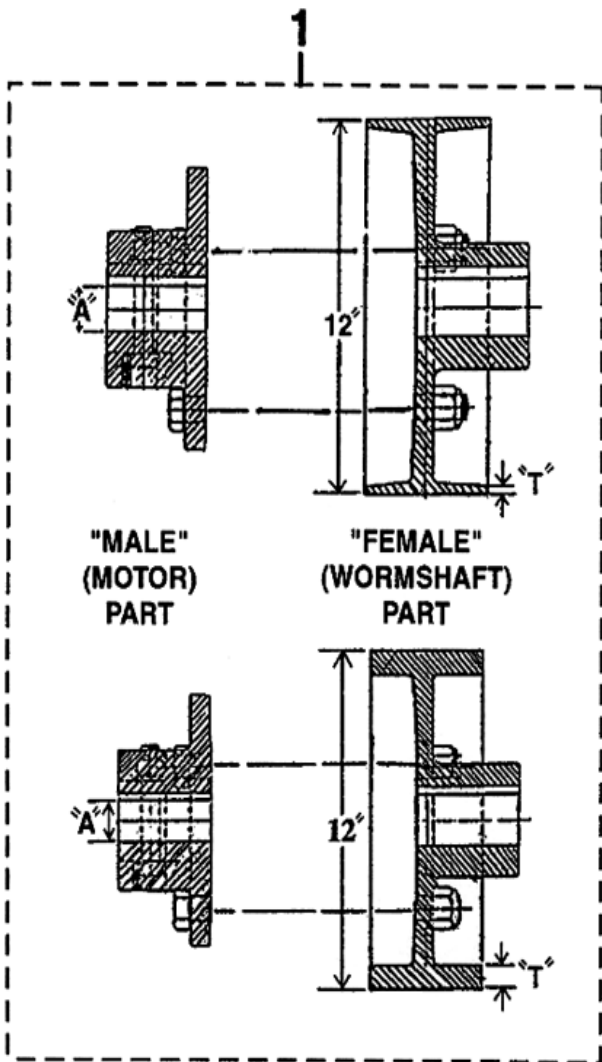
Page 13 - Sheaveshaft Parts - Overhung Sheave  
(Continued)



**SPL 06-6176A - No. 2 SWT Machine Yonkers & Hamilton Manufacture (With Roller Bearing Sheaveshaft)**

**Page 13 - Sheaveshaft Parts - Overhung Sheave**

Ref. No.	Vintage	
	Type _6176BX - NAO 1963 to Prod. End	
Ref. No.	P/N or M.L.	Description
1	376BD3	Gasket, "V" Seal Cover
2	50ABK-24	Seal, "V" Shape (24 in. L Required)
3	91AK1	Spring, Seal Retainer
4	2700B2	Kit, Neoprene Tube Seal
5	255YB1	Shim, Lateral, Gear End Bearing Stand (0.006 in.), Order 10
6	255YB2	Shim, Lateral, Gear End Bearing Stand (0.0082 in.), Order 20
7	255HA1	Shim, Vertical, Gear End Bearing Stand (0.006 in.), Order 10
8	255HA2	Shim, Vertical, Gear End Bearing Stand (0.0082 in.), Order 12
9	58AD6	Bolt, Sheave Retaining, Order 3



**SPL 06-6176A - No. 2 SWT Machine Yonkers & Hamilton Manufacture (With Roller Bearing Sheaveshaft)**

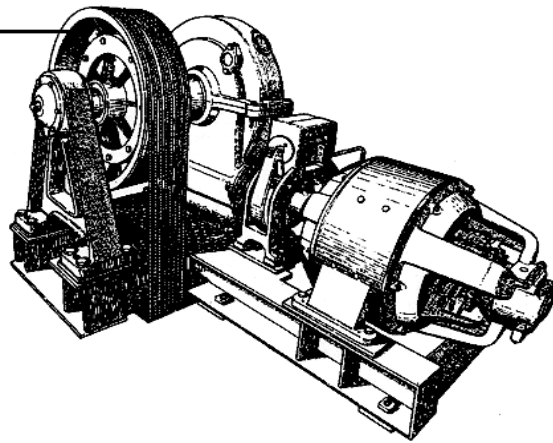
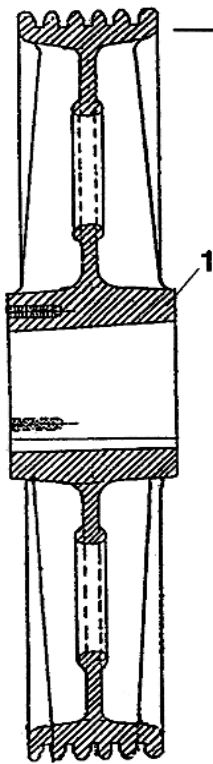
Page 14 - Brake Coupling: 9D & 11D Brake

Vintage							
1934 to Prod. End							
P/N or M.L.							
Ref. No.	Brake Type	Motor Type	Complete Coupling	Female P/N (Ref.)	Male P/N (Ref.)	"T" Dim. (in.)	"A" Dia. (in.)
1	9D	10 AC or 17 AC	216G12	216G1	216J1	0.25	2
			216H9	216H2		1.125	
		77G	216G6	216G1	216C5	0.25	1.875
			216H8	216H2		1.125	
		83ES	216G4	216G1	216C3	0.25	1.625
			216H7	216H2		1.125	
		89F	216G13	216G1	216J2	0.25	2.125
			216H10	216H2		1.125	
		98G	216G13	216G1			
		2	11D	10AC or 17AC	216W7	216W2	216J1
	216C3				1.625		
83ES	216W6						
	89F or 98G	216W12		216J2		2.125	

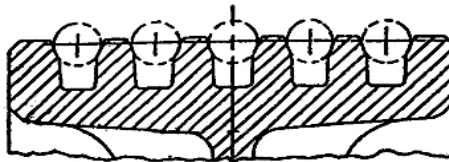


SPL 06-6176A - No. 2 SWT Machine Yonkers & Hamilton Manufacture (With Roller Bearing Sheaveshaft)

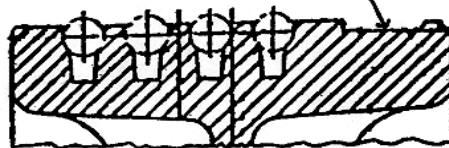
Page 15 - Drive Sheave: Inboard Sheave



WITHOUT CHAIN OR TAPE GROOVE



WITH TAPE GROOVE



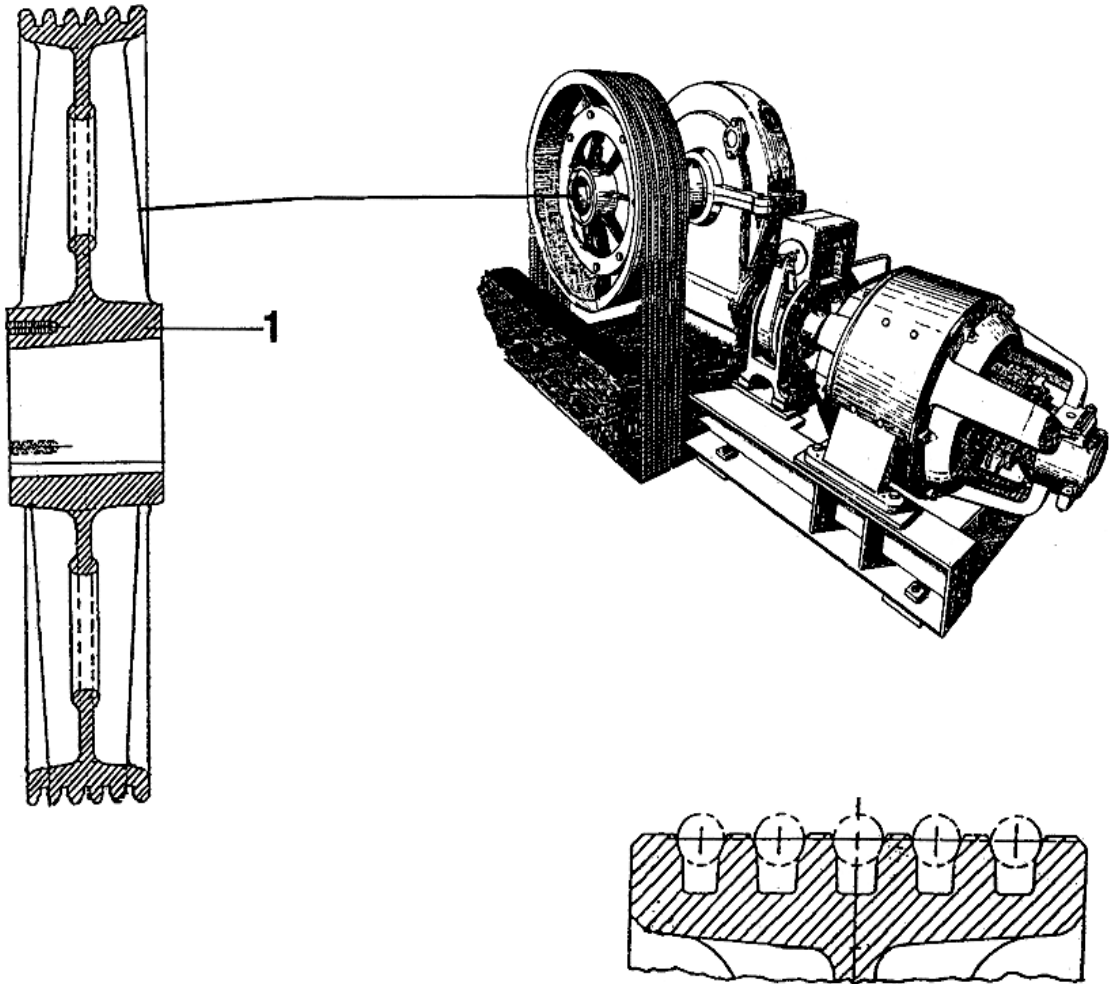
**SPL 06-6176A - No. 2 SWT Machine Yonkers & Hamilton Manufacture (With Roller Bearing Sheaveshaft)**

Page 15 - Drive Sheave: Inboard Sheave

Vintage							
1934 to Prod. End							
P/N or M.L.							
Ref. No.	W/Grooving Type			Sheave Diameter (in.)	Ropes		Tape Groove
	30° Prog.	90°	105°		No.	OD	
1	260T4	260T22	260T40	27	4	5/8 in.	W/O
	260T5	260T23	260T41		5		
	260T6	260T24	260T42		6		
	260T10	260T28	260T46	30	4		
	260T11	260T29	260T47		5		
	260T12	260T30	260T48		6		
	260T16	260T34	260T52	33	4		
	260T17	260T35	260T53		5		
	260T18	260T36	260T54		6		
	260AS1	260AS2	260AS3	27	6		W/ Tape Groove
	260AS7	260AS8	260AS9		5		
	260AS4	260AS5	260AS6	30	6		
	260AS10	260AS11	260AS12		5		

SPL 06-6176A - No. 2 SWT Machine Yonkers & Hamilton Manufacture (With Roller Bearing Sheaveshaft)

Page 16 - Drive Sheave: Overhung Sheave



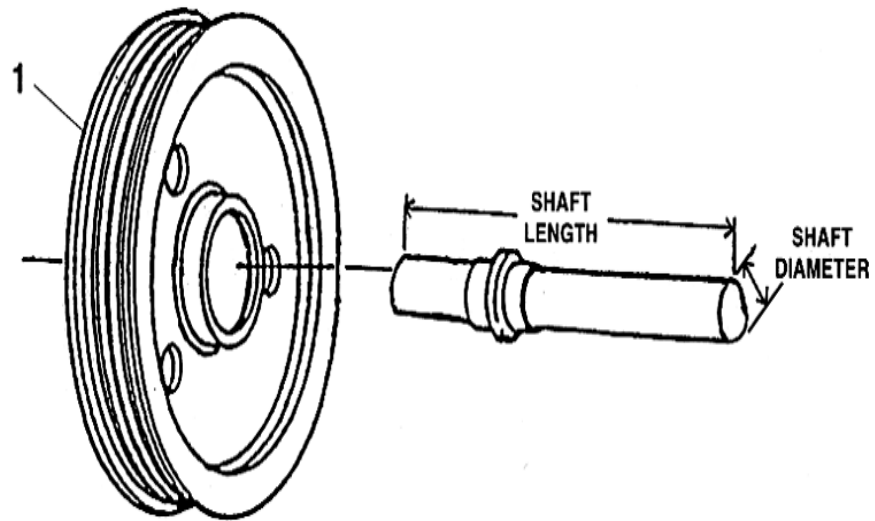
**SPL 06-6176A - No. 2 SWT Machine Yonkers & Hamilton Manufacture (With Roller Bearing Sheaveshaft)**

Page 16 - Drive Sheave: Overhung Sheave

Vintage						
1934 to Prod. End						
P/N or M.L.						
Ref. No.	W/Grooving Type			Sheave Dia. (in.)	Ropes	
	30° Prog.	90°	105°		No.	OD (in.)
1	260AV2	260AV14	260AV26	27	5	1/2
	260AV3	260AV15	260AV27		6	
	260AV5	260AV17	260AV29		5	5/8
	260AV6	260AV18	260AV30		6	
	260AV8	260AV20	260AV32	30	5	1/2
	260AV9	260AV21	260AV33		6	
	260AV11	260AV23	260AV35		5	5/8
	260AV12	260AV24	260AV36		6	

**SPL 06-6176A - No. 2 SWT Machine Yonkers & Hamilton Manufacture (With Roller Bearing Sheaveshaft)**

**Page 17 - Deflector Sheave**



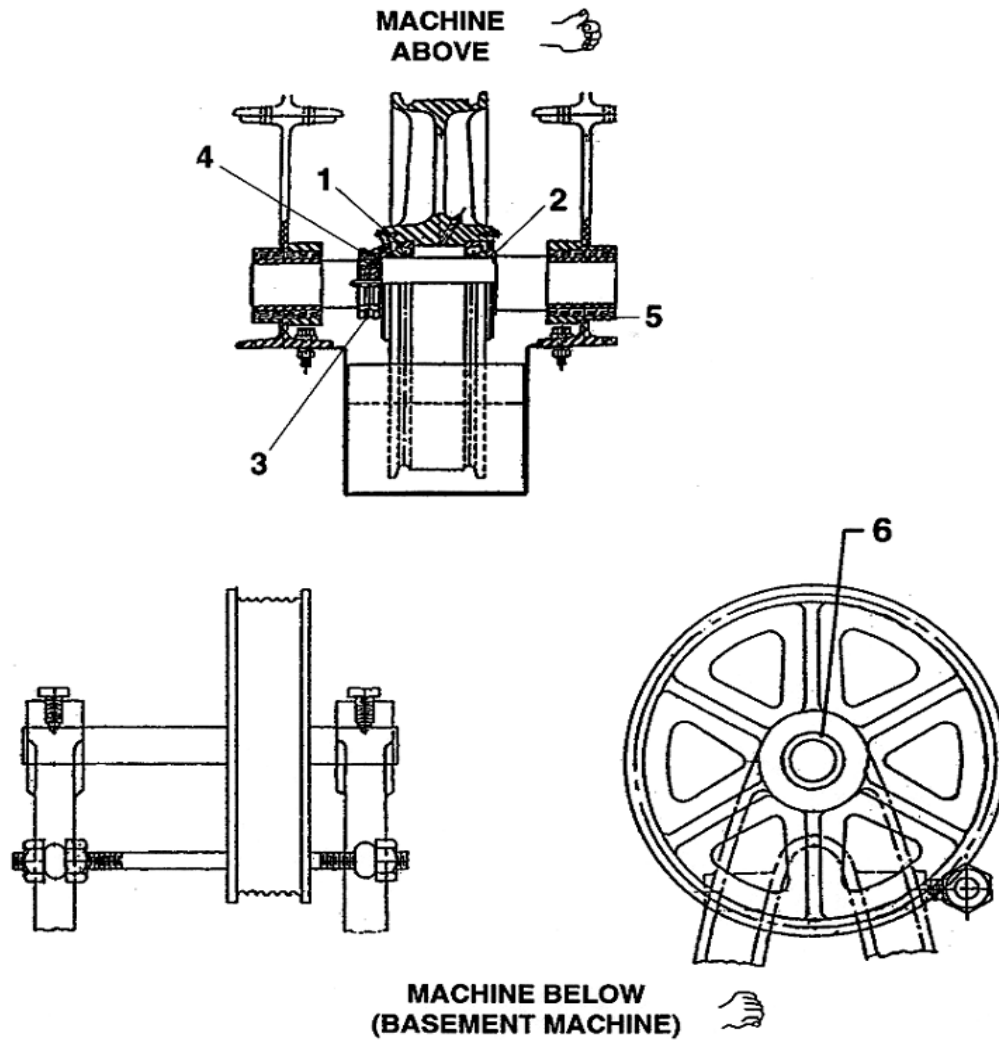
**See p. 18 for Deflector Sheave Sundries**

**SPL 06-6176A - No. 2 SWT Machine Yonkers & Hamilton Manufacture (With Roller Bearing Sheaveshaft)**

Page 17 - Deflector Sheave

Ref. No.	Vintage		Sheave Diameter (in.)	Ropes		Shaft Diameter (in.)	Shaft Length (in.)	Shaft P/N	Tape Groove	Assembly Type
	Prod. End P/N or M.L.	1934 to		No.	OD (in.)					
1	A263Z1	26	4	5/8	3.375	28.5	495AV2	W/O	6119BG	
	A263Z2									5
	A263Z1									6
	263AY6	27	4	1/2	2.872	29.4375	495CG4			6119CP
	263AY5									
	263AY3		5	5/8						
	263AY1		6	1/2						
	263AY4	5/8								
	263AY2	1/2								
	A263E3	30	4	5/8	2.872	19.3125	B495E2		C6329A	
						16.9375	A495E2		B6329A	
					2.752	20.875	C495AB2		C6328C	
	263E3		5		5	2.872	17.9375		495E2	A6329A
	A263E1					2.872	19.3125		B495E2	C6329A
							16.9375		A495E2	B6329A
			2.752			20.875	C495AB2		C6328C	
	263E1					17.9375	495E2		A6329A	
	263T1		2.872			19.3125	B495E2		CHAIN	
	263AT2				19.3125	B495E2	WITH		C6329A	
			3		22.625	495BY2			6329F	
	A263E2		6		6	2.872	19.3125		B495E2	W/O
				2.752		20.875	C495AB2		C6328C	
				16.9375		A495E2	B6329A			
	263E2			2.872	17.9375	495E2	A6329A			
263AT1		19.3125		B495E2	WITH	C6329A				
	3	22.625		495BY2		6329F				

Page 18 - Deflector Sheave Sundries



**NOTE:** To determine the shaft type, find deflector sheave on p. 17.

**SPL 06-6176A - No. 2 SWT Machine Yonkers & Hamilton Manufacture (With Roller Bearing Sheaveshaft)**

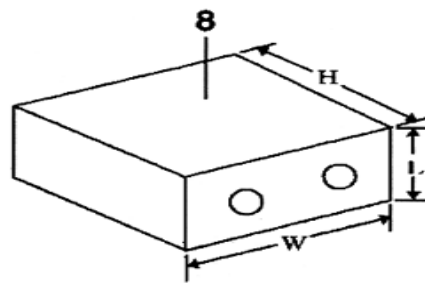
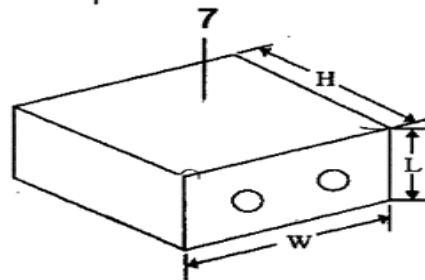
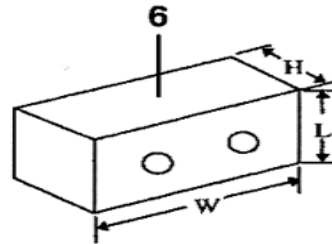
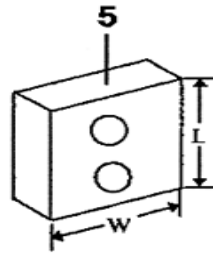
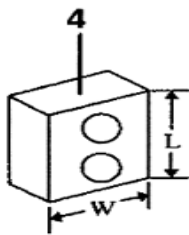
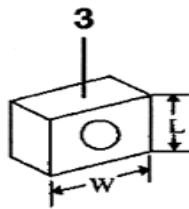
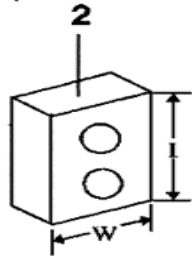
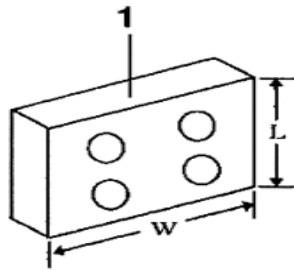
Page 18 - Deflector Sheave Sundries

		Vintage						
		1934 to 1978						
Ref.	P/N or M.L.							Description
	Shaft Type							
No.	495AV2	495CG4	B495E2	A495E2	C495AB2	495E2	495BY2	
1	N/A	209B11						Bearing, Roller Order 2
2		462JA1						Spacer, Bearing
3		130AA3						Washer, Tabbed
4		72BV3						Nut, Bearing Retainer, Order 2
5	N/A			321BL1		N/A		Bushing, Rubber Isolated
6	321AN23	N/A						Bushing, Bronze



SPL 06-6176A - No. 2 SWT Machine Yonkers & Hamilton Manufacture (With Roller Bearing Sheaveshaft)

Page 19 - Sound Isolation Equipment



**SPL 06-6176A - No. 2 SWT Machine Yonkers & Hamilton Manufacture (With Roller Bearing Sheaveshaft)**

Page 19 - Sound Isolation Equipment

Ref. No.	Vintage	
	P/N or M.L.	1934 to Prod. End
1	310BE1	Isolation, Sound, Rectangular, 6 in. L x 6 in. W, (4) 1 in. Diameter Holes
2	310BE2	Isolation, Sound, Rectangular, 6 in. L x 3 in. W, (2) 1 in. Diameter Holes
3	310BE3	Isolation, Sound, Rectangular, 3 in. L x 3 in. W, (1) 1 in. Diameter Hole
4	310BE4	Isolation, Sound, Rectangular, 5 in. L x 3 in. W, (2) 1 in. Diameter Holes
5	310BE14	Isolation, Sound, Rectangular, 6 in. L x 4 in. W, (2) 1 in. Diameter Holes
6	310BL1	Isolation, Block, Wood, 4 in. L x 6 in. W x 3 in. H, (2) 0.565 in. Diameter Holes
7	310BL2	Isolation, Block, Wood, 4 in. L x 6 in. W x 6 in. H, (2) 0.565 in. Diameter Holes
8	310BL4	Isolation, Block, Wood, 4 in. L x 6 in. W x 6 in. H, (1) 0.691 in. Diameter Hole