

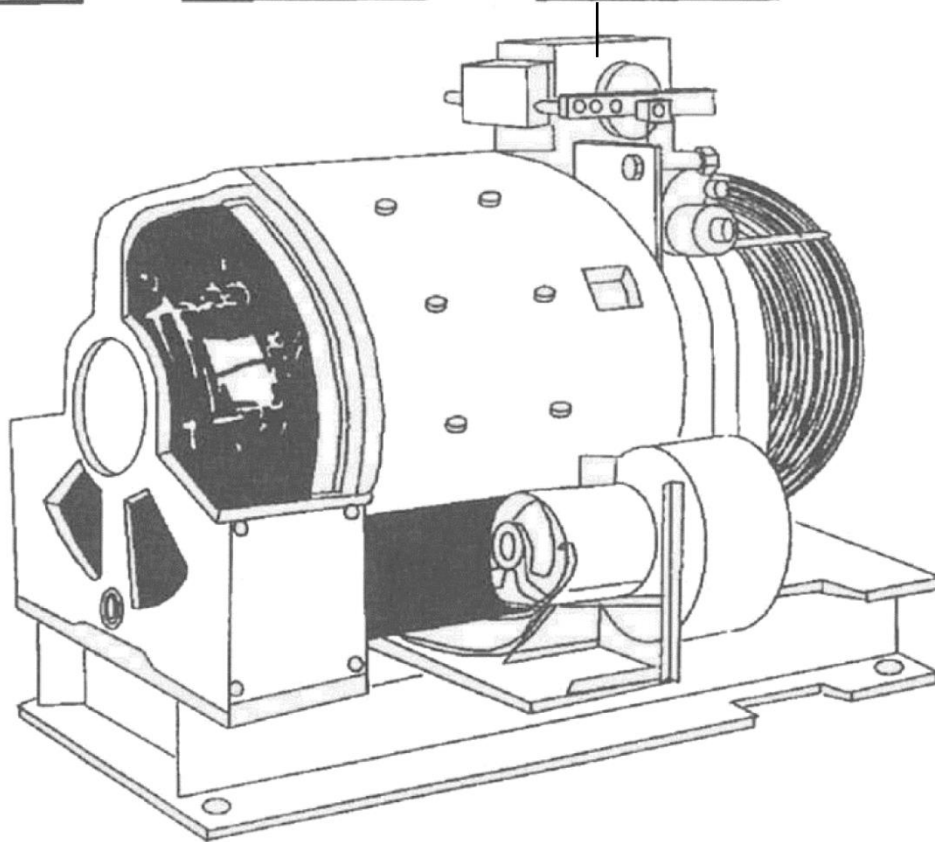
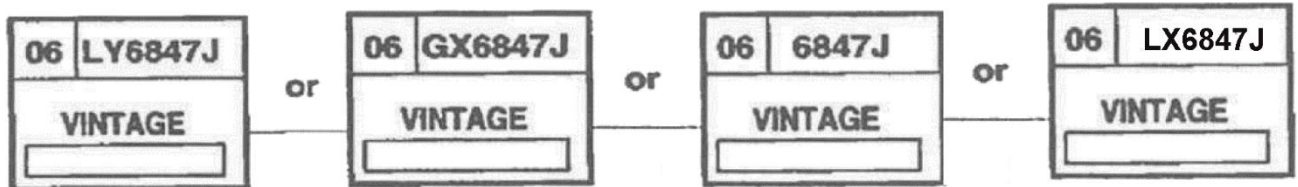
131HT Machine Gearless DC

(European Manufactured; Not in Yonkers)

Spare Parts Leaflet

06-6847J

June 21, 2023 / Page 1 of 9



OTIS

This document does not contain any technical data subject to EAR or ITAR

SERVICE ENGINEERING

Otis Elevator Company

Bloomfield, Connecticut USA

Unpublished Work—© Otis Elevator Co.; 2023

Leaflet Description

This leaflet provides spare parts information for 131HT gearless DC machines. The 131HT machines were manufactured in five different locations: Yonkers, Liverpool, Germany, Nippon, and China. The material list and data plate mounted on the machine will help identify vintage and manufacturing location. Letters GX, LX, LY indicate that the machine was manufactured in Liverpool or Germany.

Leaflet Revisions

Date Revised	Subject Matter Expert	Reason for Revision
October 1996	---	New SPL
October 10, 2018	Gary Mendrala	Added Brake Switch Kit Information
July 14, 2021	Gary Mendrala	Added machine vintage manufacturing information
June 21, 2023	Gary Mendrala	Added p/n AAA251BT8 on p. 8

Related Drawings

Drawing No.	Title
6847J	131HT Gearless Machine Liverpool, Germany Manufactured

Related Documents

Document ID	Title
SPL 06-F6847J	131HT Gearless Machine (Yonkers Manufactured)
SPL 06-D6847J	131HT Gearless Machine (Nippon Manufactured)
SPL 06-BLYB6847J	131HT Gearless Machine (China Manufactured)

Subject Matter Expert

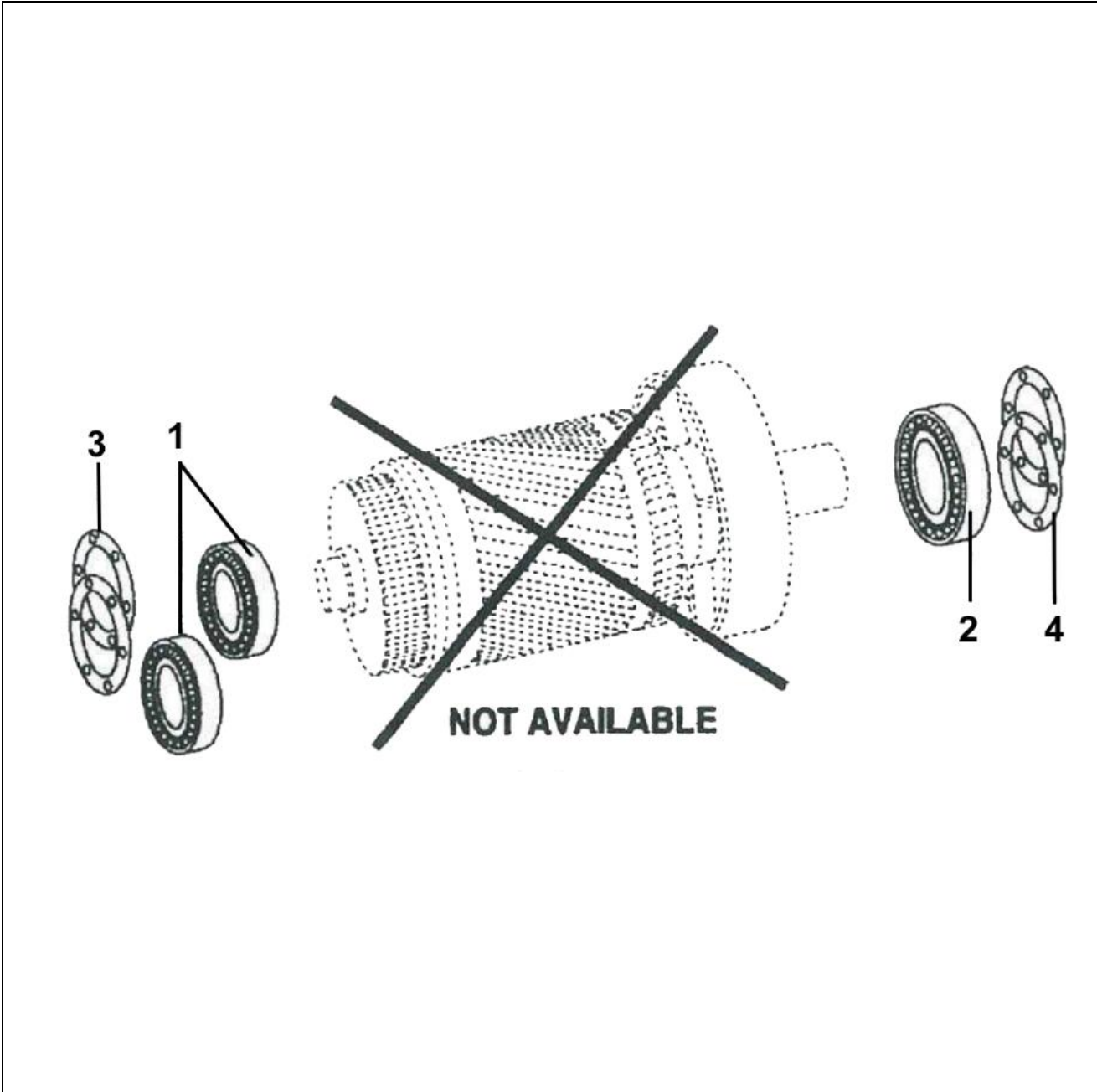
Name	Department
Gary Mendrala	OSC Service Engineering

About Spare Parts Leaflets...

This document lists the lowest replaceable units (LRUs) for the standard version of the product. The LRUs are chosen by a team of Otis associates representing engineering and manufacturing.

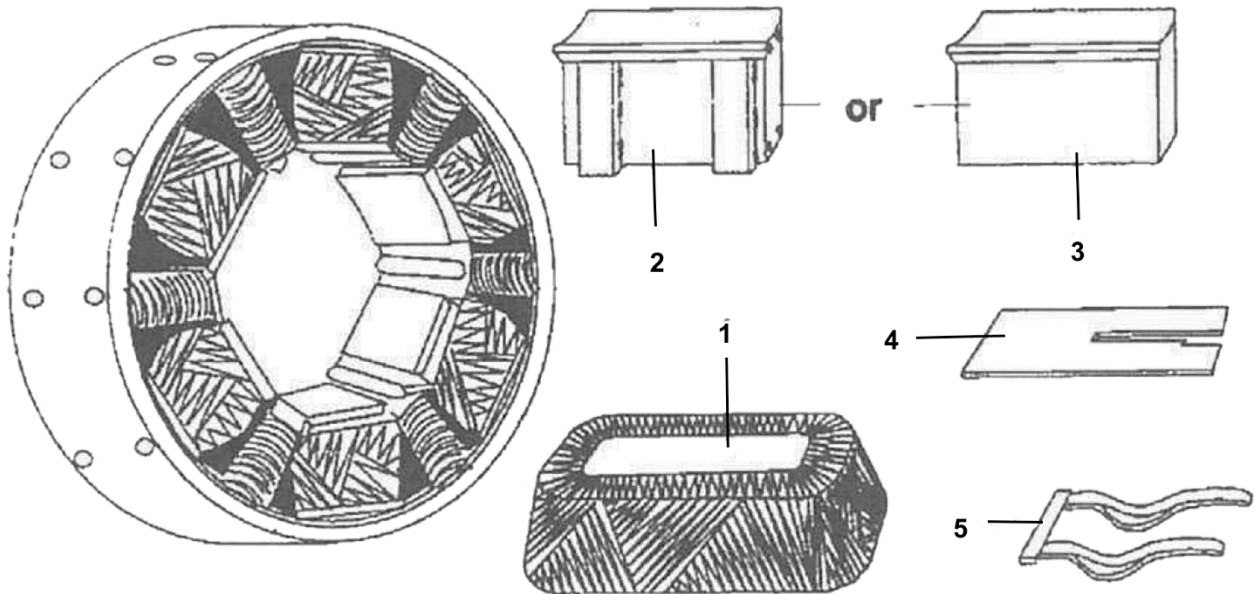
While goal of this document is to make parts identification as easy as possible, the document cannot be all-inclusive. Elevator and escalator contracts classified as "special" or "custom" are not addressed here. For such contracts, please refer to specified information, the contract folder, TIPs, Field Education Articles, Construction Letters, etc. for further information.

If you have any suggestions about this document, please contact the subject matter expert listed on this page.



VINTAGE								
UK		Germany		L	G			
W/O	L01	W/O	G01	L02	L02	L03	L04	
Ref. No.	Part or ML							Description
1	209W1							Bearing
2	GO209D1							Bearing
3	255BM3							Shim, Color: Green
	255BM4							Shim, Color: Blue
4	255CG1							Shim

NOTE: Contact spare lending for rebuild of the existing armature.



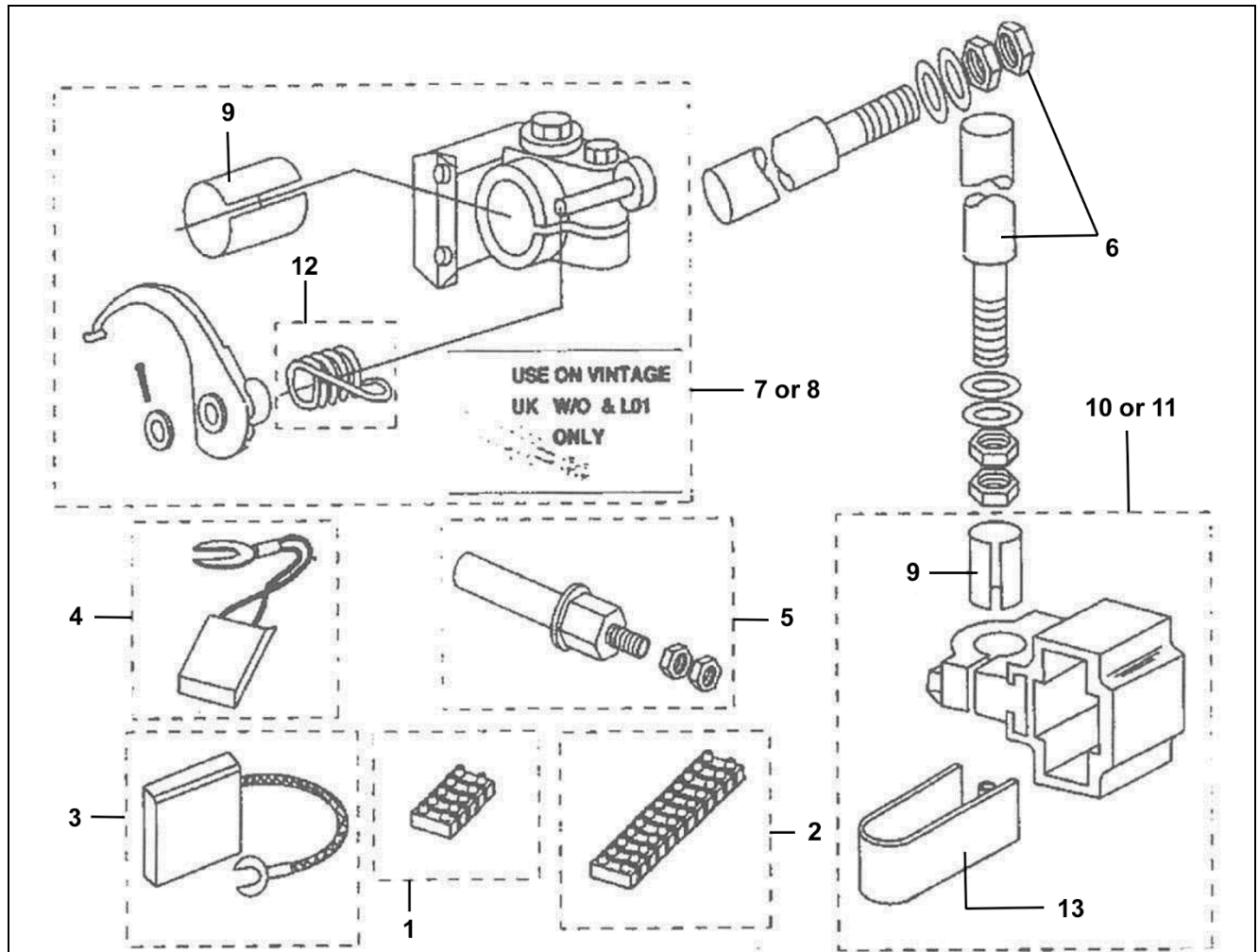
VINTAGE												
1965-1970		1957-1967		UK		GERMANY		L	G			
UK		GERMANY		W/O	L01	W/O	G01	L02	L02	L03	L04	
REF. NO.	PART OR ML										DESCRIPTION	
1	221BD1		LX221BD1		LXGX221BD503 (*see note below)						Coil, Field **	
2	355AJ1	---	355AJ1		---						Pole Piece (Imperial)	
	LX355AJ1	---	LX355AJ1	---						Pole Piece (Metric)		
3	---	GX355AJ1	---		GX355AJ1						Pole Piece (Metric)	
4	255BL5										Shim	
5	---					LO94F1					Spring	

***IMPORTANT:** Do not mix field coils from different sets. Interchangeable as sets only.

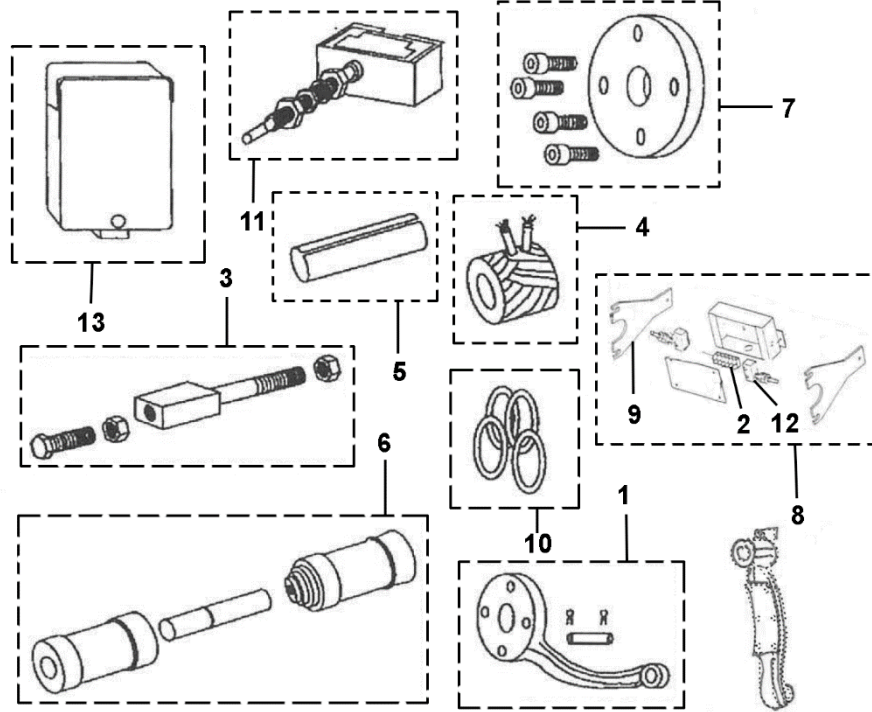
**Specify complete set of 6 coils required.

131HT Machine Gearless DC

06-6847J



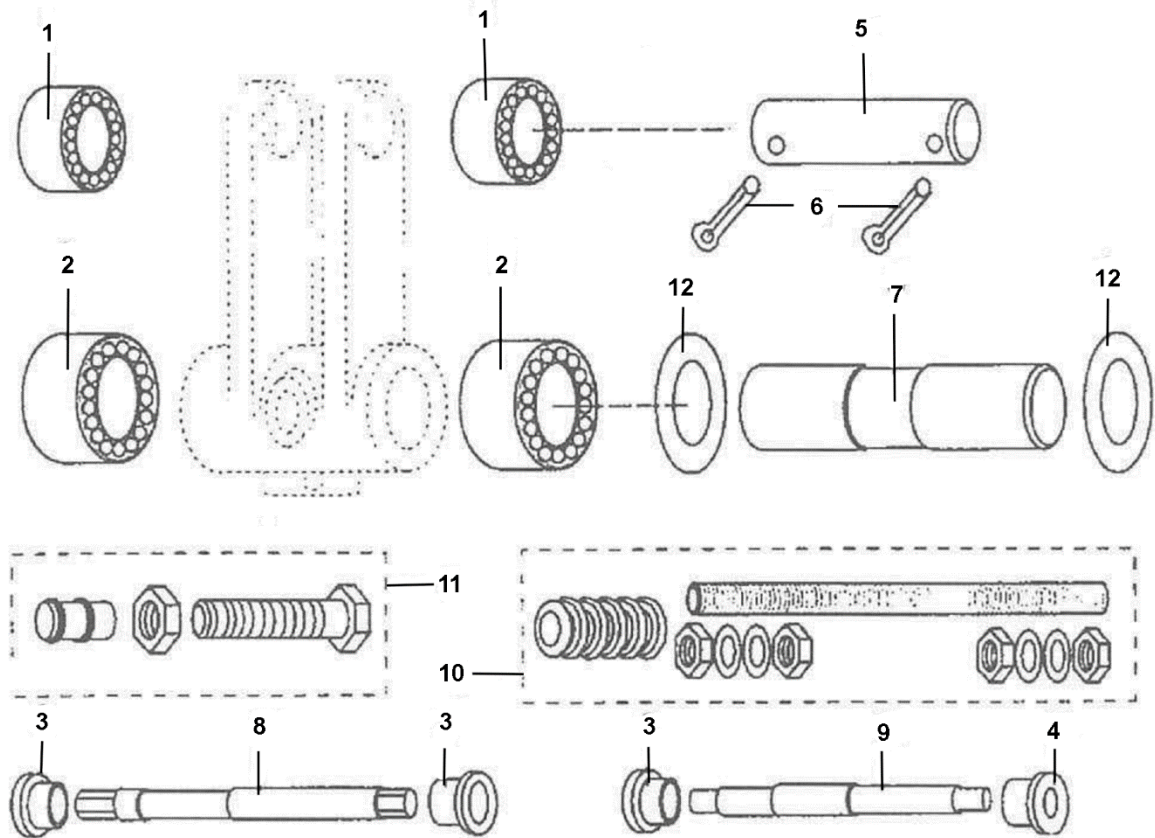
Ref. No.	VINTAGE							Description	
	UK		Germany		L	G			
	W/O	L01	W/O	G01	L02	L02	L03	L04	
1			---					LO303PJ6	Block, Terminal (brake switch)
2		---						LO303PJ1	Block, Terminal (12 way)
3				---				LO5000E813	Brush (constant force) (set of 12)
4								---	Brush (set of 12)
5	LO2000FA319							---	Brush, Stem & hardware
6		---						LO2000FA830	Brush, Stem & hardware
7	LO2000FA320				6134B8			---	Holder, Brush 22 mm ID FP
8, 9	LO2000FA321				LO2000FA318			---	Holder, Brush 22.5 mm ID, Insulation Strip FP
10								6134J7	Holder, Brush 22 mm ID CP
11, 8								LO5000E706	Holder, Brush, 22.5 mm ID (strip insulation) CP
12		---			92A2			---	Spring
13								93FC2	Spring (constant force)



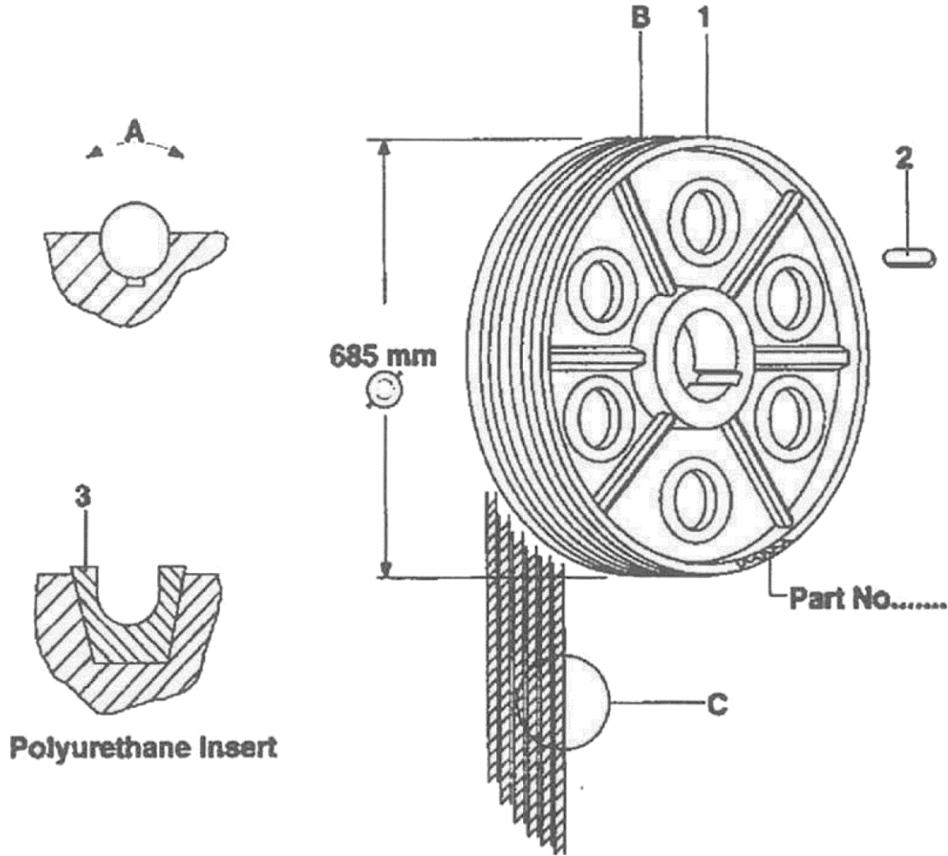
Ref. No.	VINTAGE								Description
	UK		Germany		L	G	L03	L04	
	W/O	L01	W/O	G01	L02	L02	L03	L04	
1			LO5000E416				---		Arm, Brake Switch
2			303G2						Board, Terminal
3	---		LO2000FA836						Bolt & Hardware
4			222JA15						Coil, Magnet
5			136R10						Core, Tube Magnet
6			LO5000E426						Cores, Magnet, & Pin
7			---				346AMA1		Disc, Brake
8			7013J1						Kit, Brake Switch
9			288WE1						Lever
*			GXA416Y4						Lining, Brake (2 per M/C)
*			445C3						Rivet (4 per brake lining)
10			128AG53						Shim, Brake (washer)
11			---				177AP1		Switch
12			177Y1						Switch
13			6931A1						Switch, Brake

* For brake relining, see TIP 6.0-1, *Replacement of Brake Linings*.

All gearless machines must use brake arms or shoes that lined with green gripper and factory bonded. OSC makes every effort to rework the same brake arms and shoes.

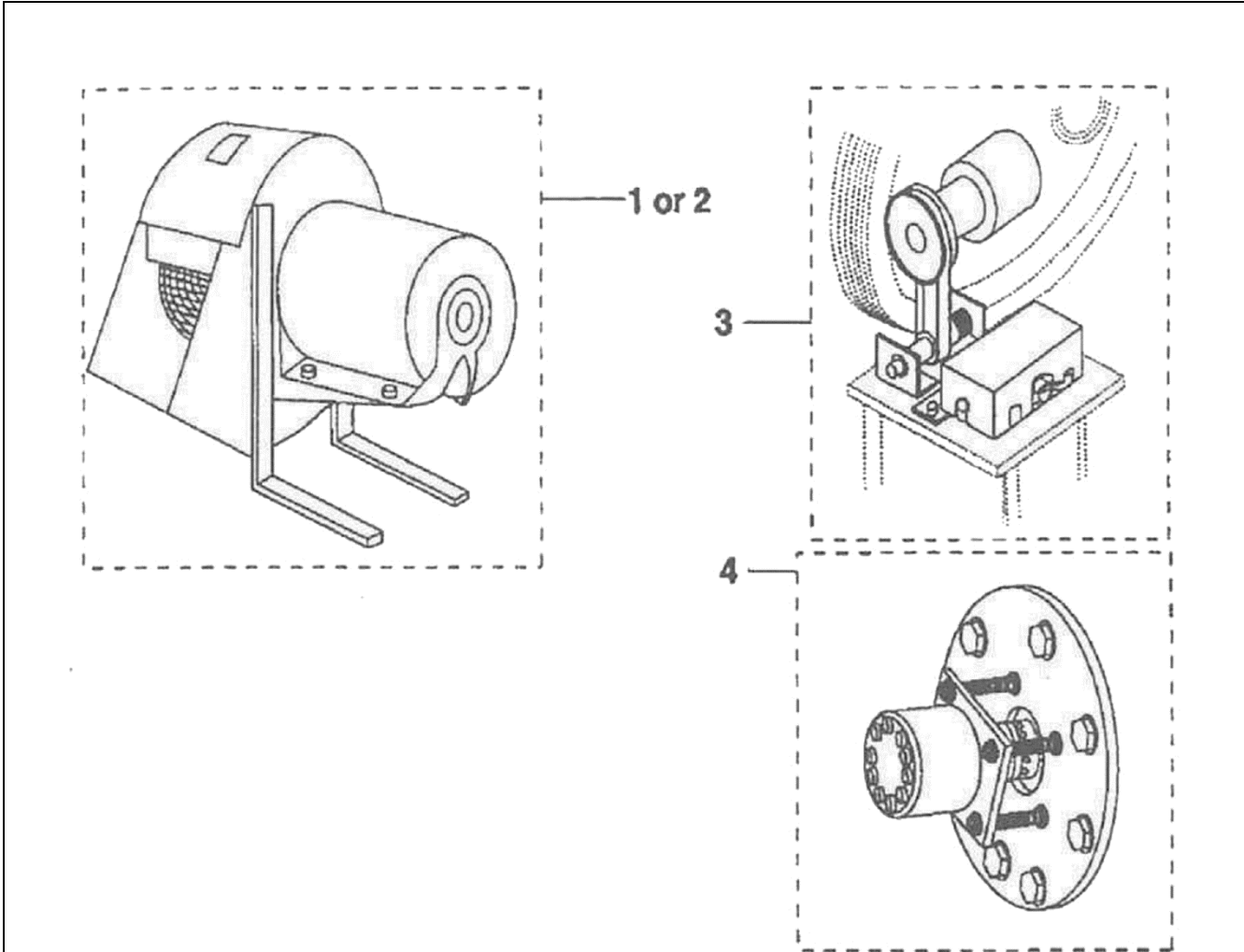


Ref. No.	Vintage					Description
	UK		Germany		UK	
	W/O	L01	W/O	G01	G01, L02, L03, L04	
1			209A6			Bearing, 22 mm
2			209A7			Bearing, 22 mm
3			335H14			Bush (used with 77TL1 and GO77FW1)
4		---	GX335H501			Bush (used with GO77FW1 only)
5			LO82J1			Pin (used on lever)
6			---			Pin, Cotter 3 mm Dia., 30 mm Long (used w/ LO82J1)
7			LX77LG3			Pin (used on lever)
8		77TL1	---			Pivot
9		---	GO77FW1			Pivot
10			LO5000E502			Rod, Brake & Hardware
11		LO2000FA332	LO2000FA842 (metric)			Striker Pin & Hardware
12			128AL2			Washer, 50 mm x 32 mm bore x 3 mm thick approx.)



Polyurethane Insert

Ref. No.	UK W/O L01 Germany W/O G01		Description	A	B	C
	L Vintage L02	Vintage L03		Undercut Groove	Number of Grooves	Rope Dia.
1	G Vintage L02	L04	Standard Drive Sheave with Rim	105 deg.	5	13 mm dia.
				90 deg.	5	
				105 deg.	6	
				90 deg.	6	
				105 deg.	4	
				90 deg.	4	
			Standard Drive Sheave without Rim	105 deg.	5	
				90 deg.	5	
				105 deg.	6	
				90 deg.	6	
			Poly Sheave with Rim	Poly Insert	4	
				Poly Insert	5	
			Poly Sheave without Rim	Poly Insert	4	
				Poly Insert	5	
2			192D37	Key		
3	---		251BT3 AAA251BT8	Polyurethane Insert, 1 off per groove		



This item does not apply to machines supplied to NAO. Blower to be supplied locally. A right-hand blower unit is mounted on the right hand side of the machine when viewed from the commutator end. Left hand opposite.

Ref. No.	VINTAGE								Description
	UK		Germany		L	G			
	W/O	L01	W/O	G01	L02	L02	L03	L04	
1		---					LO6091Y1		Fan Unit, RH (as shown)
2		---					LO6091Y2		Fan Unit, LH (opposite)
3		---					---		Shaft Encoder, see SPL 06-LY7119AB
4		---					---		Primary Velocity Transducer, see SPL 06-HT200750-1