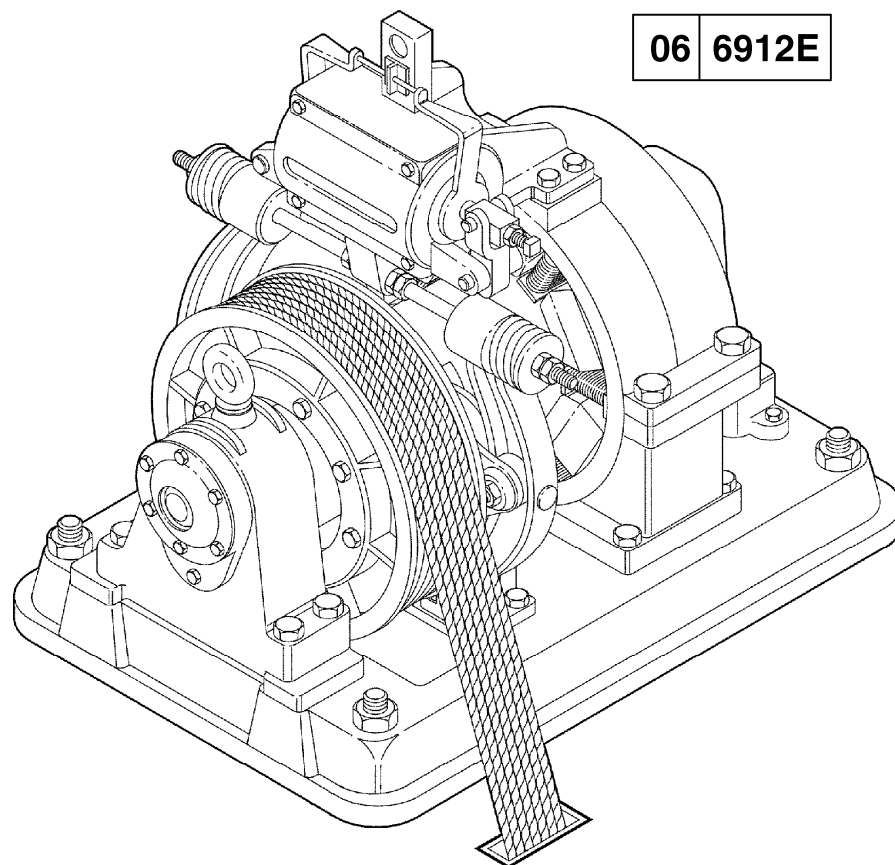


#72 Machine Double- Wrap Traction

Spare Parts Leaflet

06-6912E

February 5, 2014 / Page 1 of 18



OTIS

SERVICE ENGINEERING
Otis Elevator Company
Bloomfield, Connecticut USA

Unpublished Work—© Otis Elevator Co.; 2014

Leaflet Description

This leaflet details the spare parts for #72 double-wrap traction machines. 1924 and prior #72 machine is the same as the latest 12-20H (hollow shaft) machine. SPL for the 12-20H machine is not available.

Leaflet Revisions

Date Revised	Subject Matter Expert	Reason for Revision
August 3, 2005	Val Sheynkman	New Leaflet
February 14, 2008	Val Sheynkman	Updated information
April 7, 2009	Val Sheynkman	Updated and clarified information
March 3, 2010	Val Sheynkman	Updated blower description on page 16
June 1, 2011	Val Sheynkman	Added a new p. 16
March 14, 2012	Val Sheynkman	Updated parts list on p. 14
January 16, 2013	Val Sheynkman	Updated ref. 1 on p. 14
February 5, 2014	Val Sheynkman	Updated ref. 5 on p. 12

Related Drawings

Drawing No.	Title	Drawing No.	Title
199-TM A199TM B199TM	General Arrangement 72 Machine	A-34-TM	Magnet Shoe Brake
6912E A6912E	General Arrangement 72 Machine	6912D	72 Machine Brake General Arrangement

Related Documents

Document ID	Title
---	---

Subject Matter Expert

Name	Department
Val Sheynkman	OSC Service Engineering

About Spare Parts Leaflets...

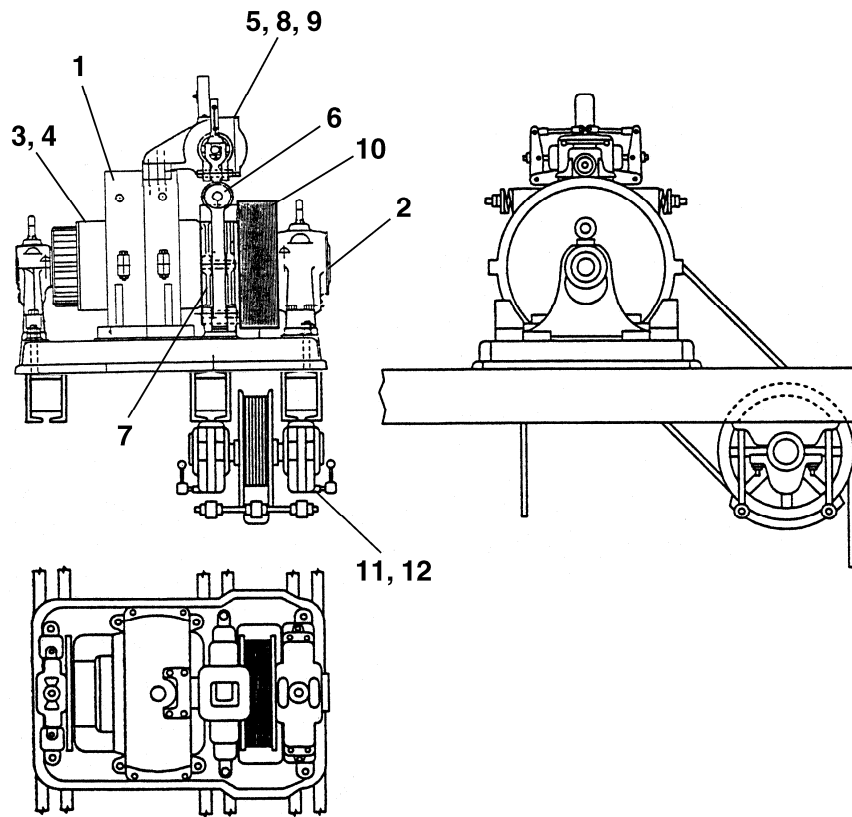
This document lists the lowest replaceable units (LRUs) for the standard version of the product. The LRUs are chosen by a team of Otis associates representing engineering and manufacturing.

While goal of this document is to make parts identification as easy as possible, the document cannot be all-inclusive. Elevator and escalator contracts classified as "special" or "custom" are not addressed here. For such contracts, please refer to specified information, the contract folder, TIPs, Field Education Articles, Construction Letters, etc. for further information.

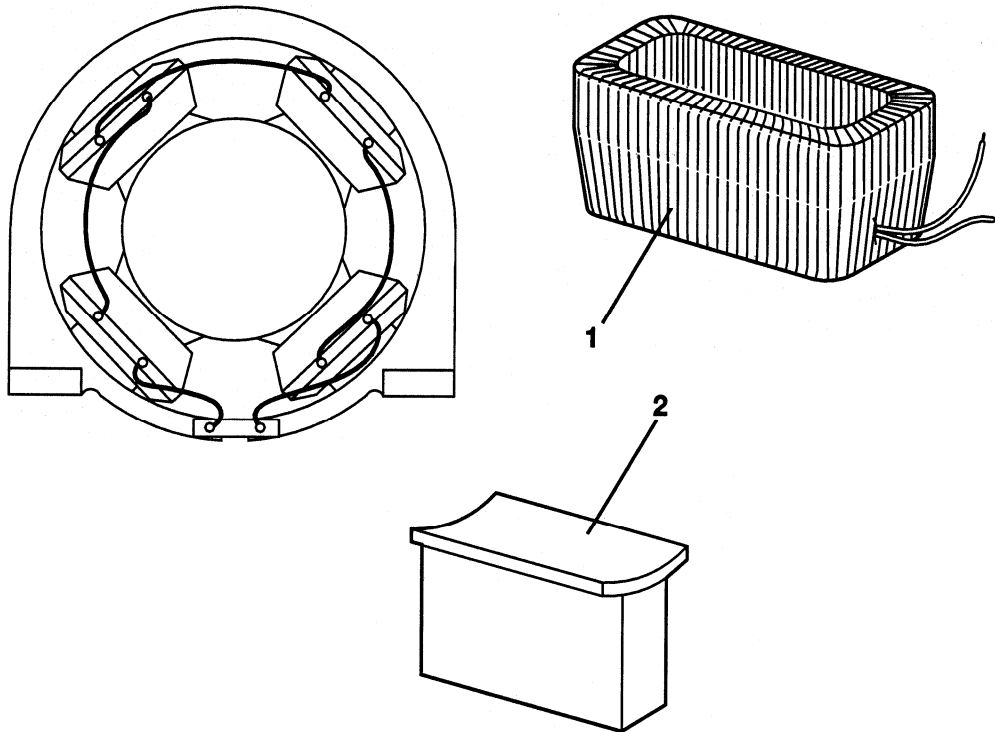
If you have any suggestions about this document, please contact the subject matter expert listed on this page.

Table of Contents

06-6912E



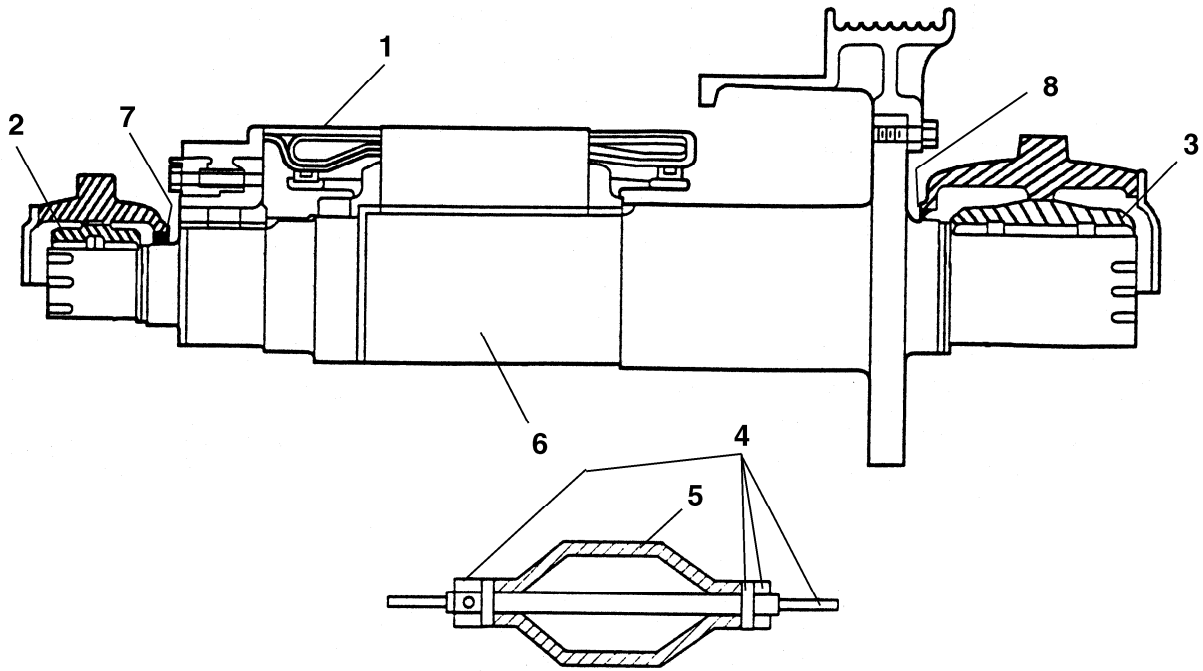
REF. No.	PAGE	DESCRIPTION
1	4	Motor Field Coils
2	5	Armature Shaft
3	6	Brush Holders and Brushes
4	7	Brush Stem Rigging Parts
5	8	Brake Assembly
6	9	Brake Arm Assembly Parts
7	10	Brake Shoe and Lining Assembly
8	11	Upgraded Brake
9	12	Brake Assembly Magnets & Coil
10	13	Drive Sheave
11	14	Secondary Sheave & Shaft w/Babbitted Bearings
12	15	Secondary Sheave and Shaft w/Roller Bearings
---	16	Blower Motor and Miscellaneous Parts
---	17	Sheave Guard




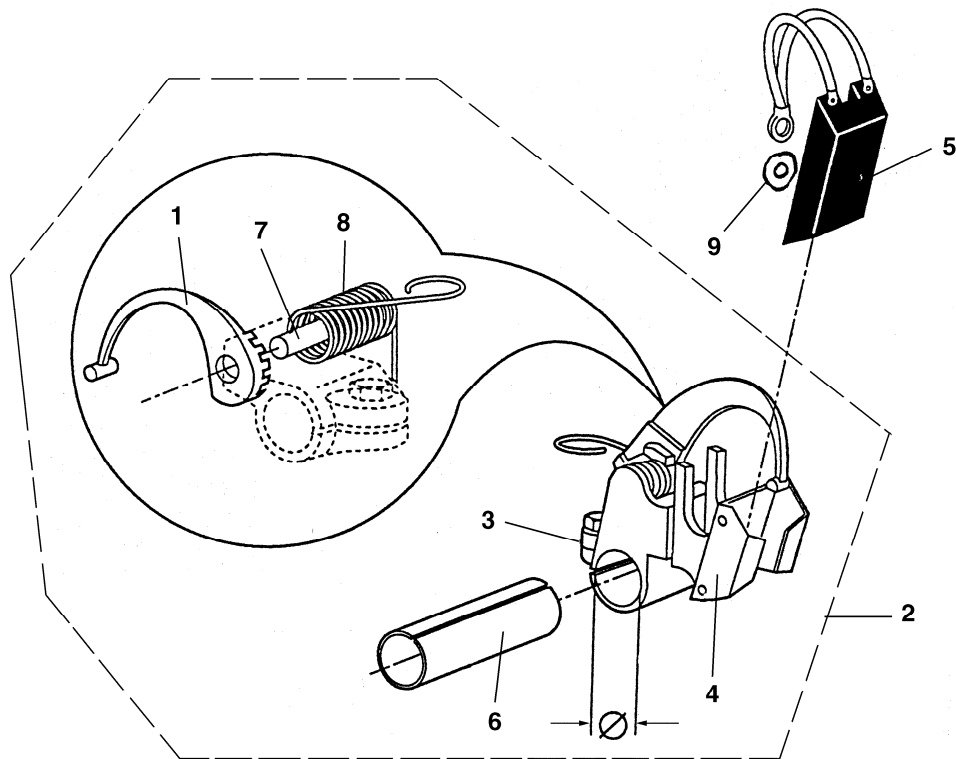
VINTAGE		
199-TM, 6912E		
REF. No.	PART No.	DESCRIPTION
1	485849 221AX1 221BT1	Coil, Field
2	49844 355AE1	Piece, Pole

Armature Shaft

06-6912E



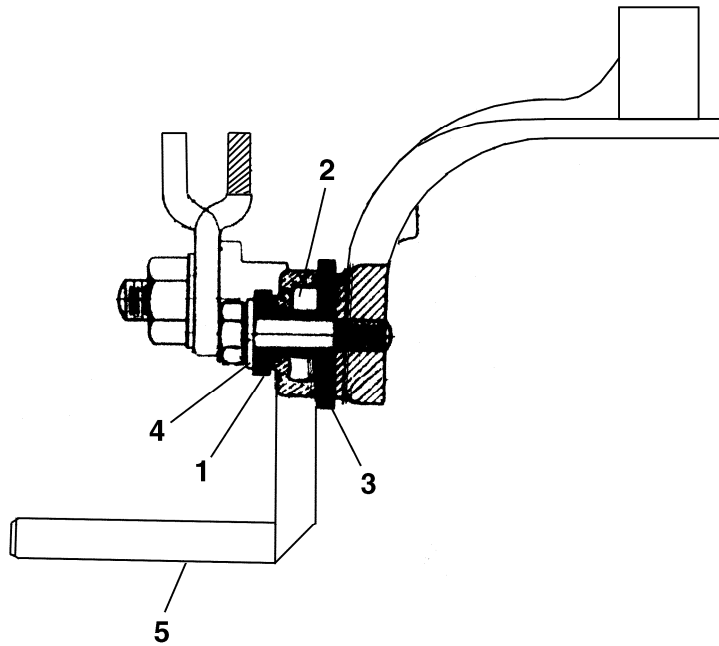
W/O VINTAGE		
REF. No.	PART No.	DESCRIPTION
1	---	Armature, Coil-Contact Set, Contact OSC Spare Lending
2	404522 104522A	Bearing, Front End
3	404524 104524A	Bearing, Rear End
---	AAA332BP1	Chain, 1/4 in. Brass Oil
4	AAA21410E5	Kit, Hollow Shaft Repair,  TIP 6.1.0-5, Installation Instructions
5	---	Shaft, Hollow
6	460L2	Shaft, Solid Armature
7	AAA488M2	Strip, Felt, Front End (3/8 in. x 5/8 in. x 19-5/8 in.) Pre-1935
	33A1	Seal, Oil, Front End, Post-1935
8	AAA488M2	Strip, Felt, Rear End (3/8 in. x 5/8 in. x 29 in.) Pre-1935
	33A4	Seal, Oil, Rear End, Post-1935



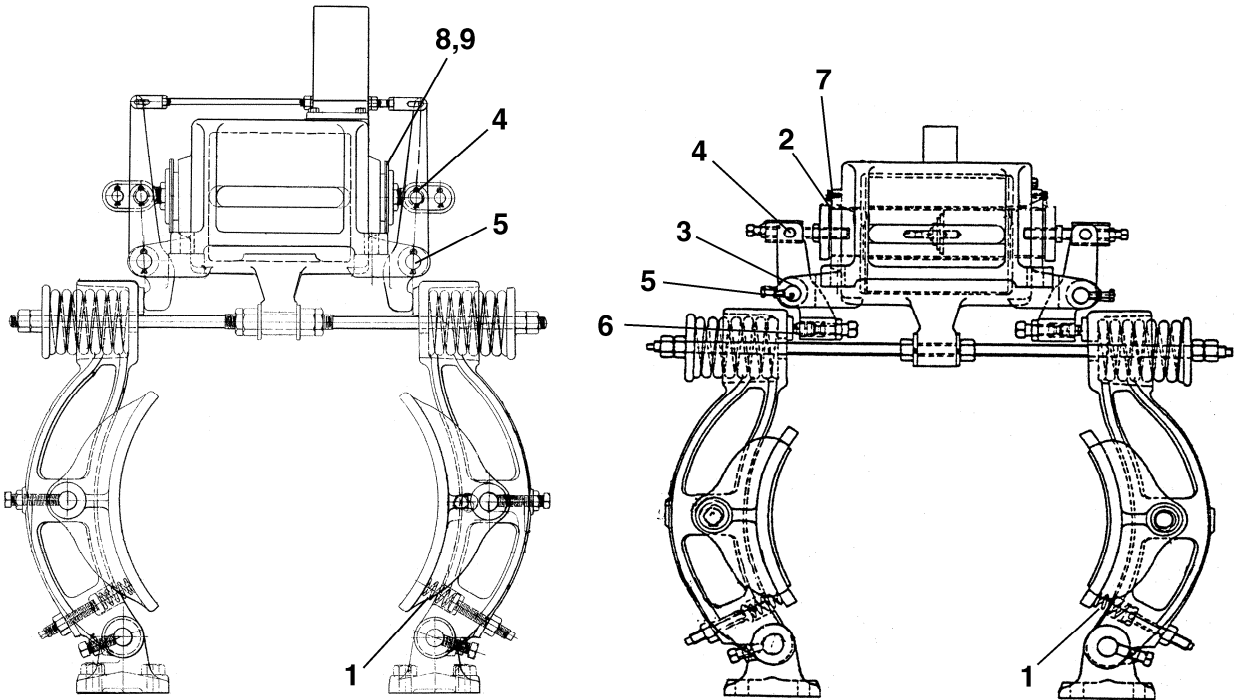
VINTAGE		
REF. No.	PART No.	DESCRIPTION
1	288CD1	Arm, Brush Holder
2	6134G1	Assembly, Brush Holder for 5/8 in. x 1-1/2 in. Brush, "D" = 0.625 in.
	6134G2	Assembly, Brush Holder for 5/8 in. x 1 in. Brush, "D" = 0.625 in.
	6134G3	Assembly, Brush Holder for Voltage Feedback 5/8 in. x 1 in. Brushes, "D" = 0.650 in.
3	130622 306GM1	Base, Brush Holder for p/n 6134G1 & 2
	306GM2	Base, Brush Holder for p/n 6134G3
4	130620 178T2	Box, Brush Holder for p/n 6134G1
	178T1	Box, Brush Holder for p/n 6134G2 & 3
5	240F25	Brush, Carbon 5/8 in. x 1-1/2 in.
	240F27	Brush, Carbon 5/8 in. x 1 in.
6	298DF128	Insulating Strip, Mylar for p/n 6134G3 Brush Holder
7	808040	Pin
8	92A4	Spring
9	810371 128A8	Washer, Brass

Brush Stem Rigging Parts

06-6912E



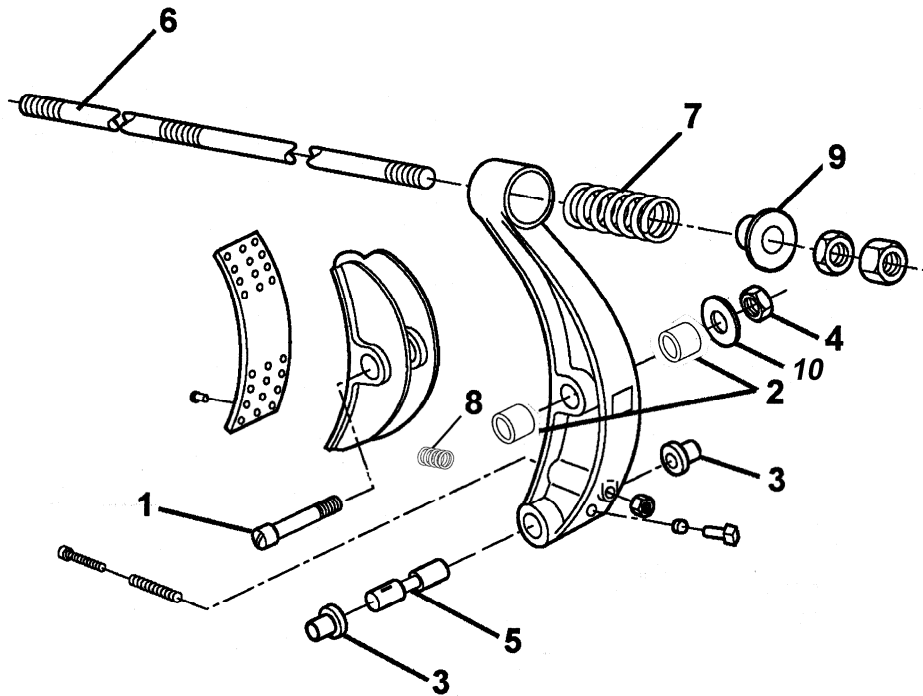
W/O VINTAGE		
REF. No.	PART No.	DESCRIPTION
1	10838	Washer, Insulating
2	806655	Bushing, Insulating (for brush stem)
3	126085	Plate, Insulating
4	85490 127AE8	Washer, Standard 1/2 in.
5	131145	Stem, Brush

06-6912E**Brake Assembly**

REF. No.	VINTAGE		DESCRIPTION
	34-TM	6912D	
REF. No.	PART No.		DESCRIPTION
1	90KC2		Spring, Lower Brake Arm
	90JC12 (furnished 1955 to 1958)		
2	---	320BH1	Bumper, Rubber
3	---	335H22	Bushing
4	82AH1		Pin, 1 x 4 x 5/8 in.
5	83339		Pin (L = 5.75 in.)
6	81BN2		Pin
7	---	128AG55	Washer, Brass (ten of each core)
8	85294 128AG55	---	Washer, Brass (use up to ten of p/n 128AG55 for each core instead of one p/n 85294)
9	800980	---	Washer, leather (one for each core), I.D. = 4 in., O.D. = 5.5 in.

Brake Arm Assembly Parts

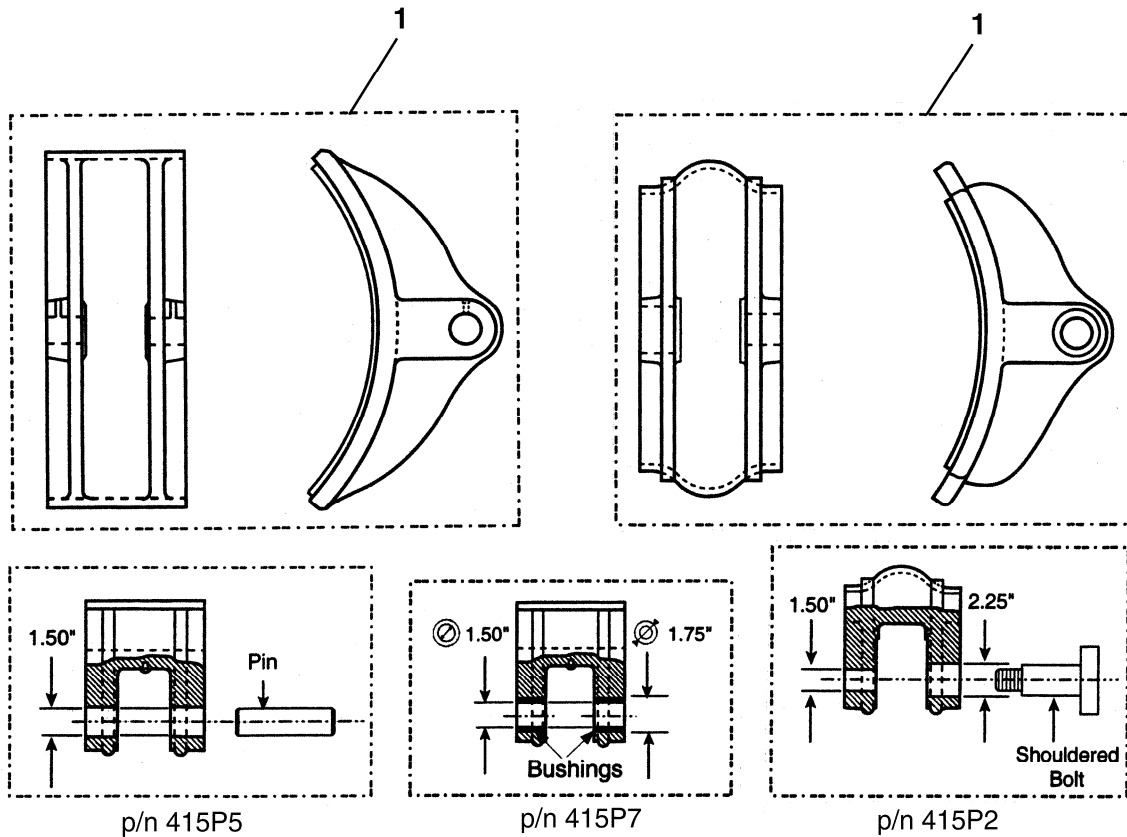
06-6912E



VINTAGE	
A-34TM	6912D

REF. No.	PART No.		DESCRIPTION
1	---	59BH2	Bolt, Shouldered
	85005	---	Pin, 1-1/2 in. \varnothing , 6.88 in. L
2	---	335E74	Bushing, Bronze
3	---	335H25	Bushing, Bronze (in machine's field frame)
4	---	67G15	Nut, Elastic Stop
5	77GB4		Pin, 1.50 in. \varnothing , 6.63 in. L
6	119349		Rod
7	90ND6		Spring, 5.5 in. \varnothing , 8.875 in. L
8	90KC2		Spring, 1.5 in. \varnothing , 2.75 in. L
9	80460		Washer (spring seat)
10	---		Washer, 1-1/4 in. \varnothing , (SAE)

Continued on Next Page

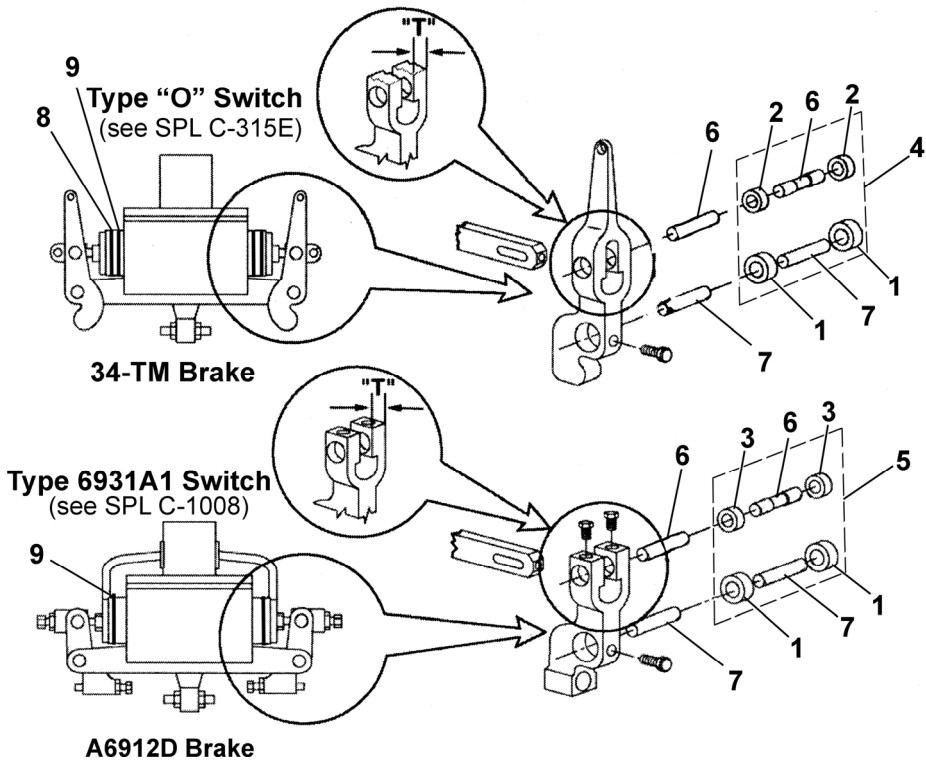


VINTAGE		DESCRIPTION
REF. No.	PART No.	
1	415P5	Brake, Shoe
	415P7	
	415P2	

NOTE: All gearless machines must use brake arms that are lined with Green Gripper® lining supplied factory-bonded by OSC for US offices.

Upgraded Brake (Upper Pivots & Lever Arms)

06-6912E

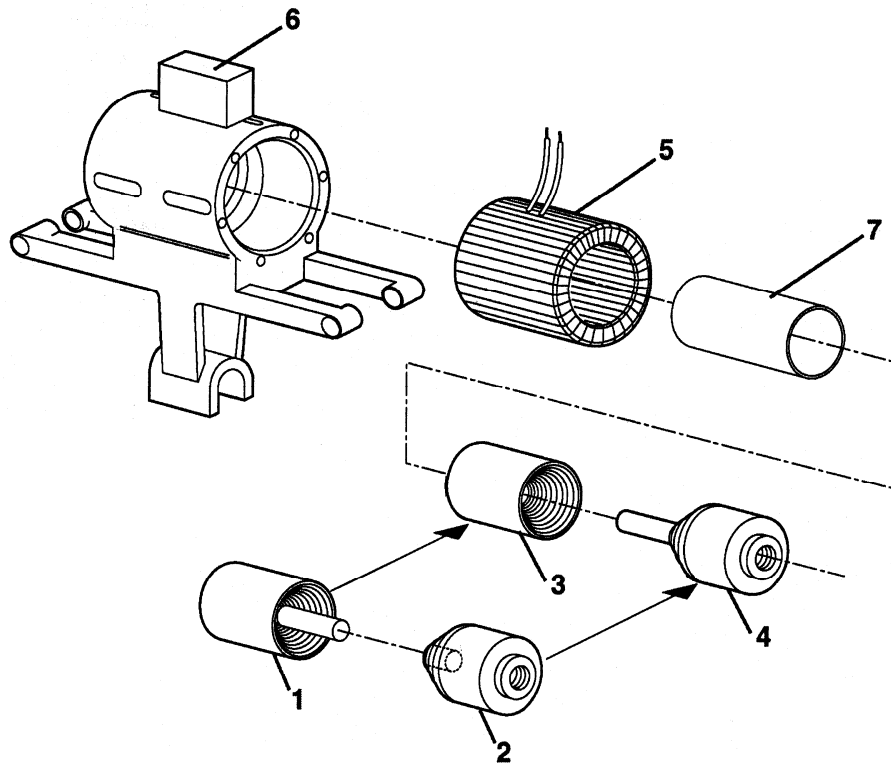


VINTAGE		
34-TM	6912D	Needle Bearing Upgrade (see NOTE 2)

REF. NO.	PART or ML		DESCRIPTION	"T"
1	---	209A7	Bearing, Needle	---
2	---	209A15	Bearing, Needle	3/4 in.
3	---	VP-704375	Bearing, Needle	1 in.
4	---	2700AD5	Kit for Both Levers, Consisting of References 1, 2, 6, 7	
5	---	2700AD2	Kit for Both Levers, Consisting of References 1, 3, 6, 7	
6	82AH1	---	Pin (original version)	
	---	GS1-82AH1	Pin (needle bearing, upgraded version for ref. 4 or ref. 5, NOTE 1)	
7	83339	---	Pin (original version)	
	---	GS1-82R1	Pin (needle bearing, upgraded version for ref. 4 or ref. 5, NOTE 1)	
8	85294 128AG26 128AG55		Washer, Brass (for 34-TM – 8 pieces for each side) (for 6912D – 10 pieces for each side)	
9	800980	---	Washer, Leather	

NOTE 1: Only order if ref. 1, 2, and 3 are present.

NOTE 2: Contact OSC for brake upgrade. Refer to service engineering letter #9A, dated 01/15/1965.

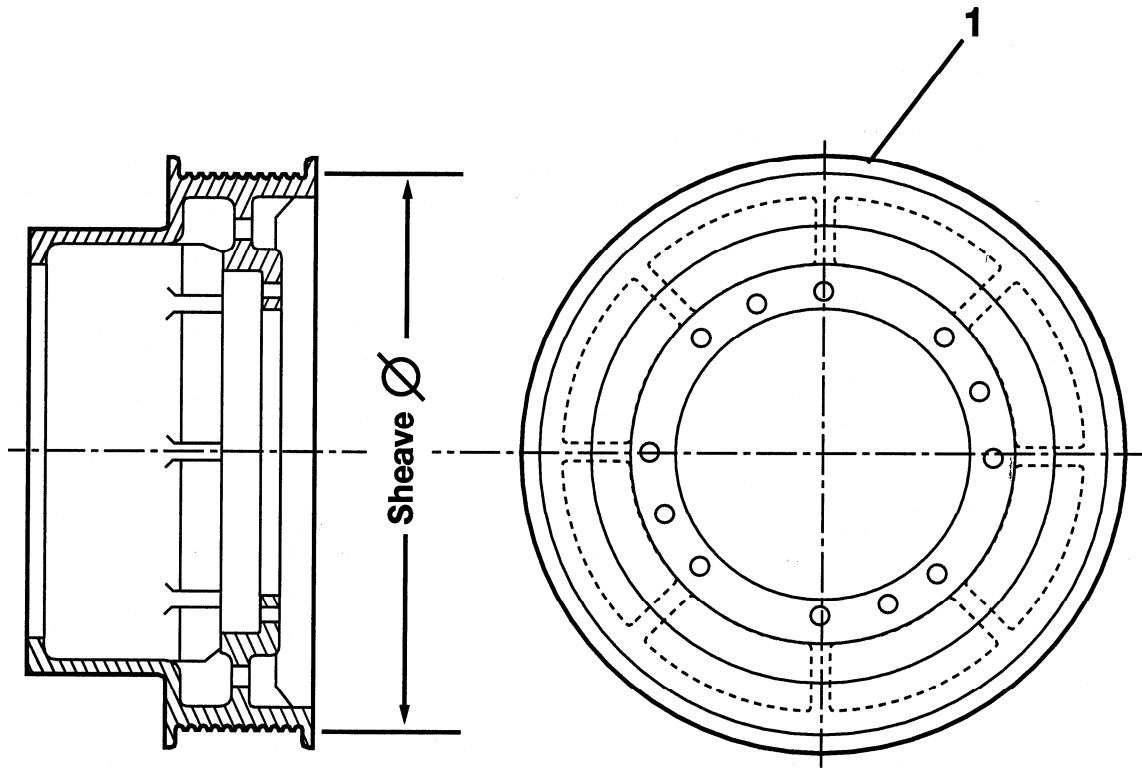


REF. No.	VINTAGE		DESCRIPTION
	34-TM	6912D	
REF. No.	PART No.		DESCRIPTION
1	---		Assembly, Magnet Core, Female w/Pin, Note
2	---		Assembly, Magnet Core, Male, w/Liner Insert, Note
3	GS1-400CJ5		Assembly, Magnet Core, Female, w/Switch Arm
4	GS1-400CH6		Assembly, Magnet Core, Male w/Switch Arm
5	666-III-1 115555		Coil, Brake (Res. = 15 Ohms)
	666-III-2 115581		Coil, Brake (Res. = 55 Ohms)
	666-III-3 115611		Coil, Brake (Res. = 200 Ohms)
	666-III-4 134634		Coil, Brake (Res. = 36 Ohms)
	666-III-5 141546		Coil, Brake (Res. = 23 Ohms)
	666-III-6 151184		Coil, Brake (Res. = 19 Ohms)
	666-III-7 183999		Coil, Brake (Res. = 6.7 Ohms)
6	"O" Switch	---	See SPL C-315E
	---	6931A1	Switch, Brake
7	136AG2		Tube, Magnet Core

***NOTE:** If either reference 1 or 2 need replacing, you must order both Ref. 3 (p/n GS1-400CJ5) and Ref. 4 (p/n GS1-400CH6).

Drive Sheave

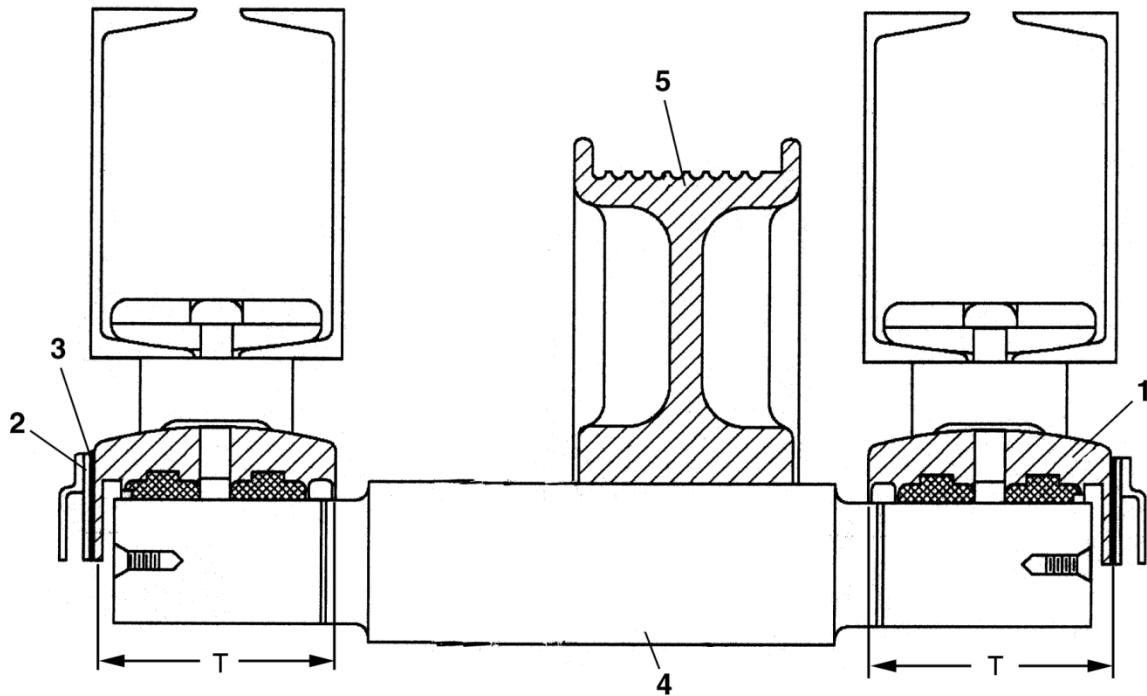
06-6912E



REF. No.	VINTAGE		SHEAVE \varnothing	GROOVES		REMARKS
	PART No.	GROOVING TYPE		Qty.	Rope \varnothing	
1	261E1	30 Undercut	30 in.	10	1/2 in.	---
	807742 261E6			12		Old Casting 559-SH-1
	815045 261C1	Round Seat	26 in.			Old Casting 749-SH-1

06-6912E

Secondary Sheave & Shaft w/Babbitted Bearings



**VINTAGE
199-TM, 6912E**

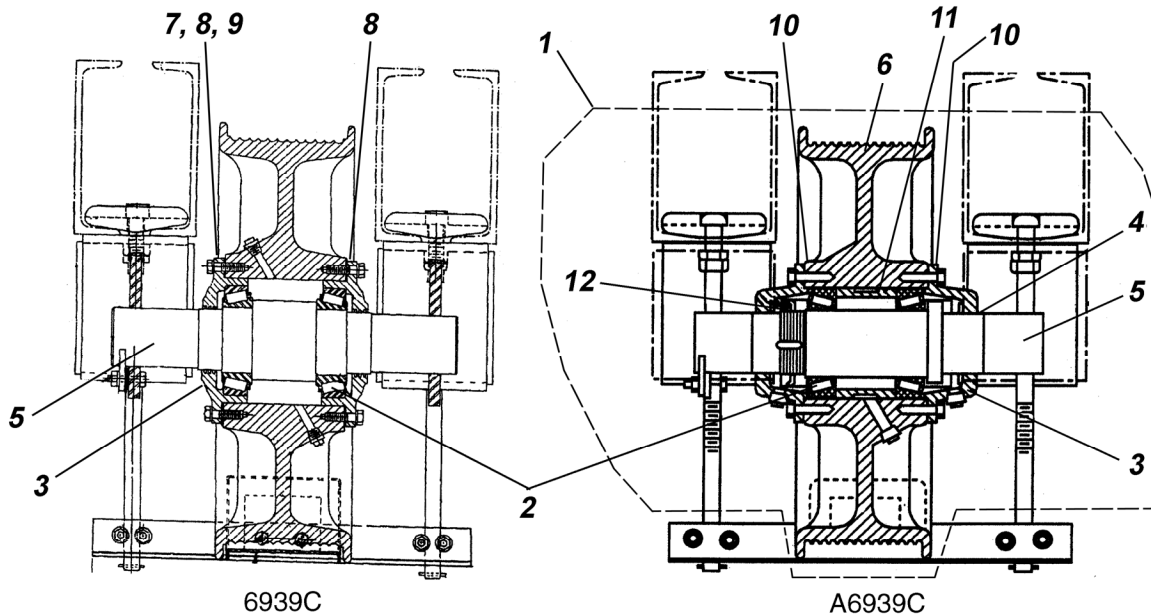
Production Pre 1948	Production Post 1948
--------------------------------	---------------------------------

REF. No.	PART No.	DESCRIPTION	REMARKS
1	405230 210AJ1	---	Bearing, Secondary Sheave Shaft, T = 8.25 in.
	---	A210AJ2	Bearing, Secondary Sheave Shaft, T = 9.25 in.
2	105233	Gasket, Vellumoid, 1/8 in. Thick	
3	105232	Guard, Inside Oil, 1/16 in. Thick	
4	404520 495AE1 A495AE1	Shaft, Secondary Sheave	See NOTE
5	840570	Sheave, Secondary, \varnothing 28 in., 10 Grooves, 1/2 in. Rope (Casting 105-SH-4)	See NOTE

NOTE: Parts listed in references 4 and 5 are no longer available. To replace them, order secondary sheave shaft assembly (p/n A6939C1), which includes the mounting bracket and hardware. Contact OSC Service Engineering for assistance with upgrade as shown on p. 16.

Secondary Sheave and Shaft w/Roller Bearings

06-6912E



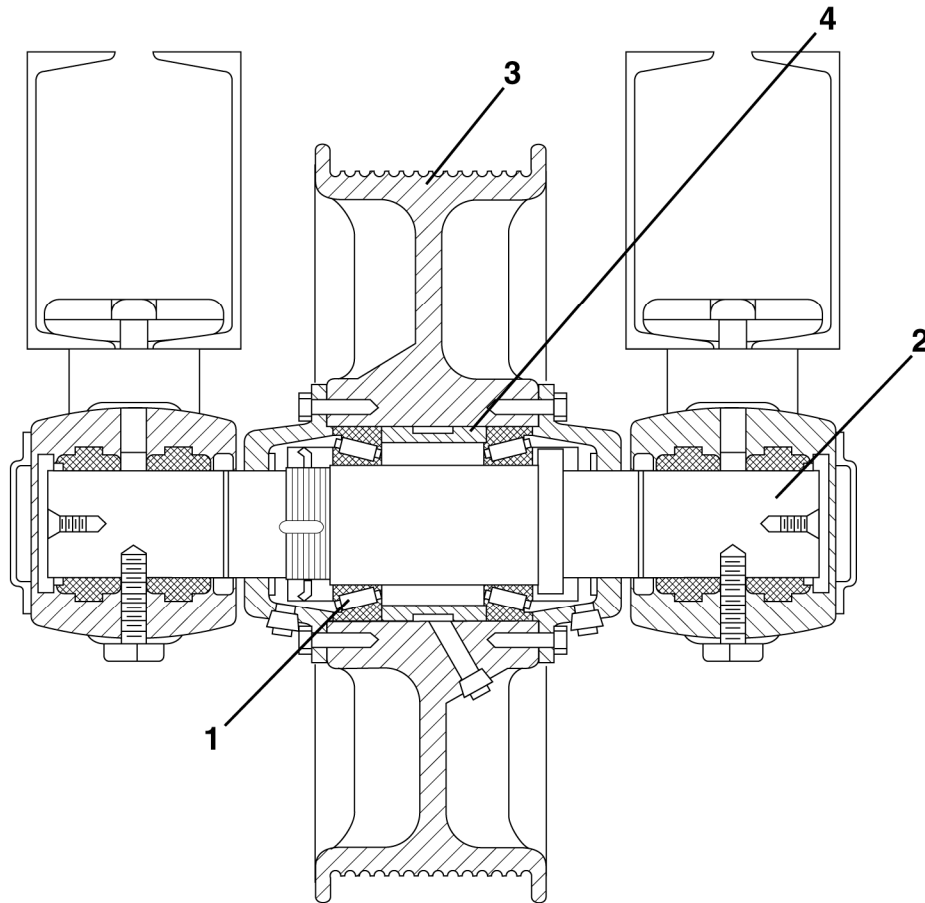
REF. No.	PART No.		DESCRIPTION
	6939C	A6939C	
1		A6939C400	Assembly, Secondary Sheave (p/n A262P1) & Shaft w/Roller Bearings
		A6939C401	Assembly, Secondary Sheave (p/n A262P2) & Shaft w/Roller Bearings
		A6939C402	Assembly, Secondary Sheave (p/n A262P3) & Shaft w/Roller Bearings
2		209B27	Bearing Roller
3	---	A346XR1	Cover
	346XR1 346AFM1	---	Cover, NOTE 1
4	---	33 D21	Seal
5	---	A495BM2	Shaft, L = 23 in.
	495BM1	---	Shaft, L = 23 in.
6	---	A262P1	Sheave, Secondary, \varnothing 28 in. (1/2 in. Rope, 10 Grooves)
		A262P2	Sheave, Secondary, \varnothing 28 in. (1/2 in. Rope, 12 Grooves, Pitch 5/8 in.)
		A262P3	Sheave, Secondary, \varnothing 28 in. (1/2 in. Rope, 12 Grooves, Pitch 9/16 in.)
	262P...	---	Sheave, Secondary, NOTE 2
7	255SC1	---	Shim, Green, 0.003 in. Thick
8	255SC2	---	Shim, Trans-Matte, 0.0075 in. Thick
9	255SC3	---	Shim, Yellow, 0.020 in. Thick
10	---	255HB39	Shim, Green, 0.003 in. Thick
11	---	172KL1	Sleeve, Spacer
12	---	130AA5	Washer

NOTE 1: For replacement instructions, see TA-III-7-1 and use cover p/n 346AFM1.

NOTE 2: This sheave is no longer available individually. To replace this sheave, order secondary sheave/shaft assembly: A6939C400 (sheave with 10 grooves), or A6939C401 (sheave with 12 grooves and groove pitch 5/8 in.), or A6939C402 (sheave with 12 grooves and groove pitch 9/16 in.)

06-6912E

Secondary Sheave Babbitted To Roller Bearings Conversion

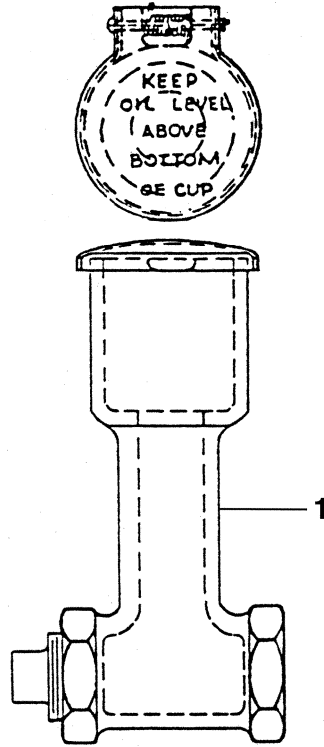


VINTAGE GS1-B11TM		
REF. No.	PART No.	DESCRIPTION
1	209B27	Bearing, Roller
2	GS1-A495BM2	Shaft
4	GS1-172KL1	Sleeve

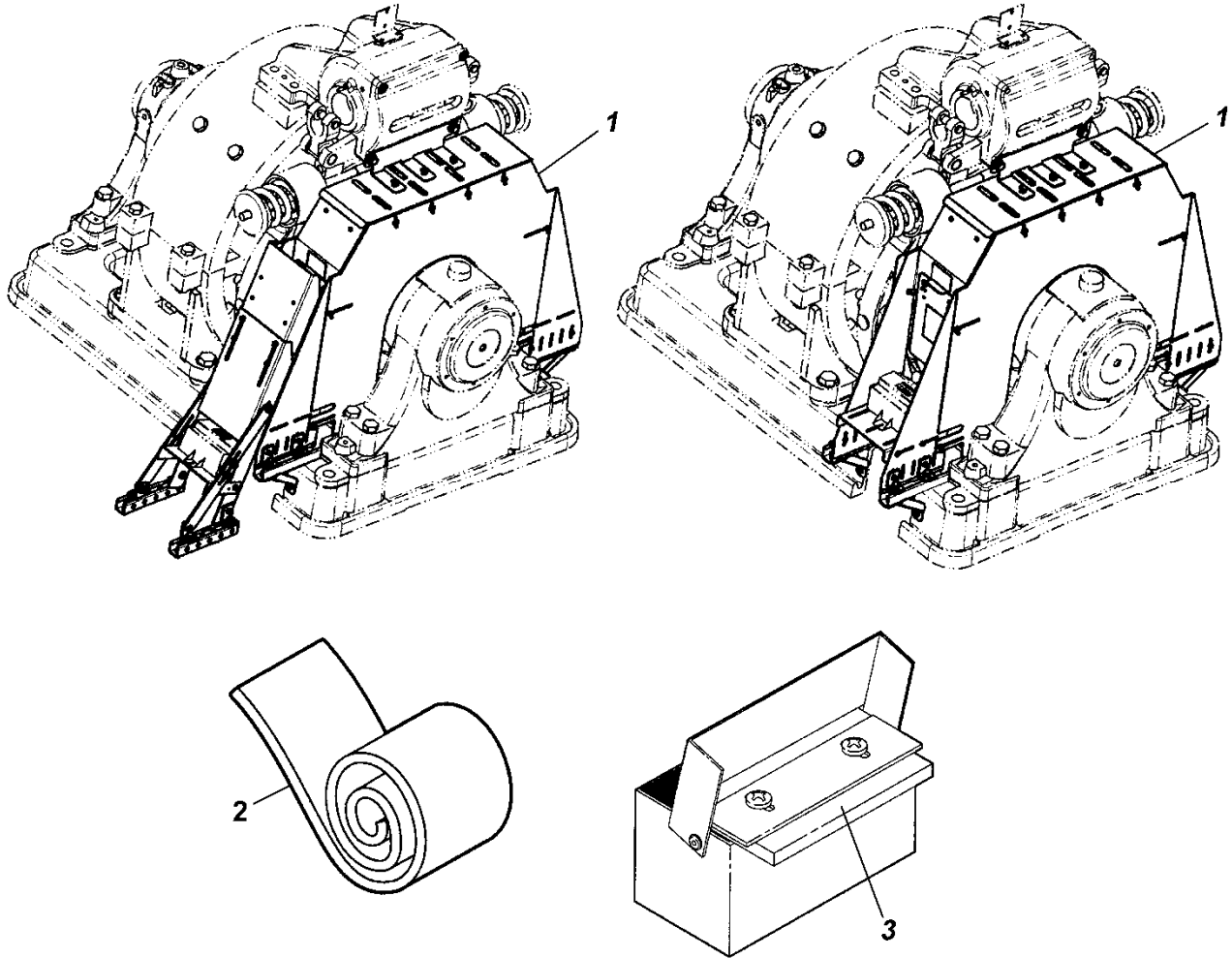
REF. No.	VINTAGE GS1-B11TM		GROOVES		SHEAVE ∅
	PART No.	DESCRIPTION	QTY.	ROPE ∅	
3	A262P1	Sheave, Secondary	10	1/2 in.	28 in.
	A262P2	Sheave, Secondary	12	1/2 in.	28 in.

Blower Motor and Miscellaneous Parts

06-6912E



VINTAGE		
199-TM, 6912E		
REF. No.	PART No.	DESCRIPTION
1	6757A1	Assembly, Oil Overflow
---	6091P7 6091P8 2700ACB1	Blower, 115 V, Squirrel Cage Type



W/O VINTAGE		
REF. No.	PART No.	DESCRIPTION
1	---	Guard, Sheave (to order sheave guard, see TIP 6.1.1-15)
2	AAA297AY3	Strip, Carpet
3	AAA488M4	Wick, Lubricator Replacement