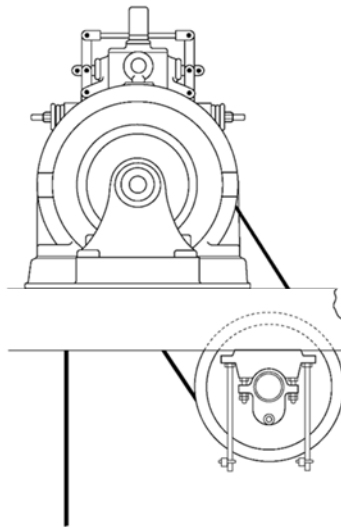
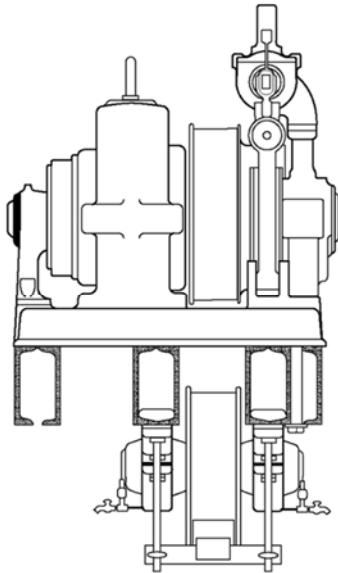


**#74 Machine**  
Single- & Double-Wrap Traction

Spare Parts Leaflet

06-6913F

November 27, 2019 / Page 1 of 22



**74 Double-Wrap Traction**

W/O Vintage:

**74**

Type 395-TM 1923-1927

**74A**

Type A395-TM 1927-1929

Type B395-TM 1929-1931

**74C**

Type 538-TM 1929-1929

**74D**

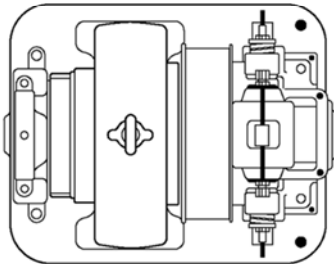
Type 624-TM 1931-1945

Type A624-TM 1946-1949

Type B624-TM 1949-1954

Type 6913D 1954-1956

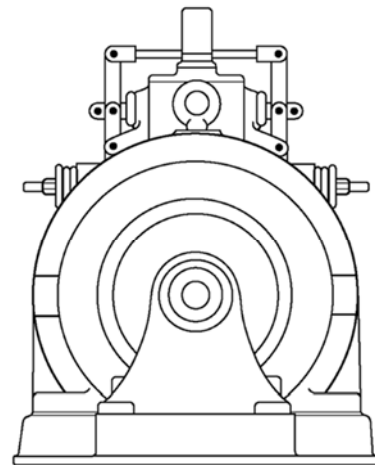
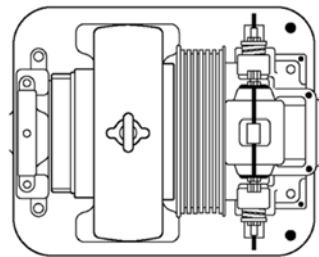
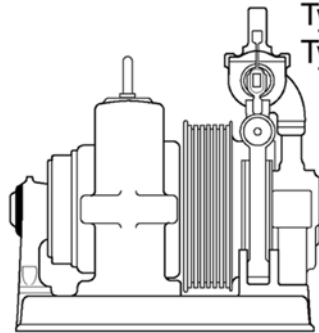
Type A6913D 1956



**74 Single-Wrap Traction**

W/O Vintage:

Type 6913A 1952



This document does not contain any technical data subject to EAR or ITAR

SERVICE ENGINEERING

Otis Elevator Company

Bloomfield, Connecticut USA

Unpublished Work—© Otis Elevator Co.; 2019

## Leaflet Description

This leaflet details the spare parts for both #74 single- and double-wrap traction machines. The cross-reference vintage table below lists the years a particular vintage machine was manufactured.

VINTAGE TABLE			
TYPE	YEARS	TYPE	YEARS
<b>DOUBLE-WRAP TRACTION (DWT)</b>		<b>DOUBLE-WRAP TRACTION, CONTINUED</b>	
<b>#74</b>		<b>#74D</b>	
Type 395-TM	1923–1927	Type 624-TM	1931–1945
<b>#74A</b>		Type A624-TM	1946–1949
Type A395-TM	1927–1929	Type B624-TM	1949–1954
Type B395-TM	1929–1931	Type 6913D	1954–1956
<b>#74B</b>		Type A6913D	1956–
Type 538-TM	1929	<b>SINGLE-WRAP TRACTION (SWT)</b>	
<b>#74C</b>		Type 6913A	1952–
Type 538-TM	1929		

## Leaflet Revisions

Date Revised	Subject Matter Expert	Reason for Revision
July 1998	V. Sheynkman	New leaflet
November 23, 2005	Val Sheynkman	Updated parts; Added sheave guard information
February 15, 2008	Val Sheynkman	Corrected or updated part numbers
March 31, 2009	Val Sheynkman	Updated parts list and illustration on p. 20
April 23, 2009	Val Sheynkman	Corrected p/n in ref. 7 on p. 14
January 23, 2013	Val Sheynkman	Added new page 21
March 5, 2014	Val Sheynkman	Updated illustration and shaft information on p. 21
November 27, 2019	Gary Mendrala	Corrected page 16

## Related Drawings

Drawing No.	Drawing No.	Drawing No.	Drawing No.
546-SH	558-SH	6913E	6939B

## Related Documents

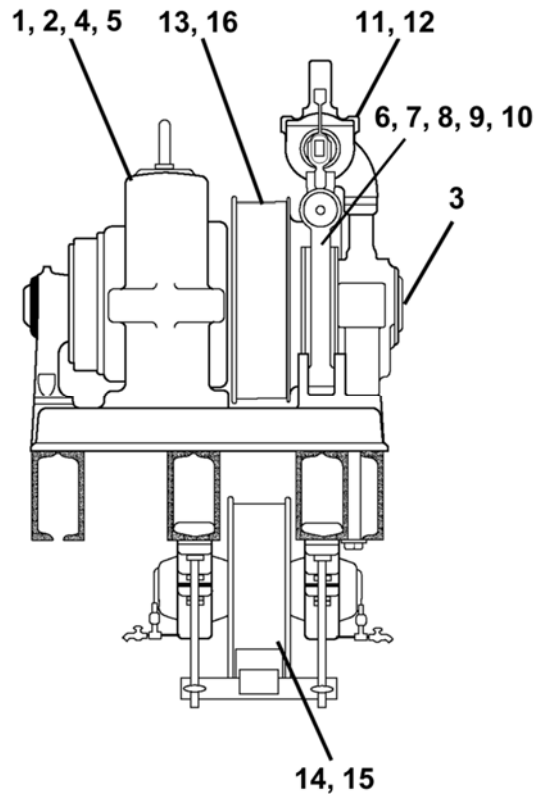
Document ID	Title
TIP 6.1.0-5	Hollow Shaft Repair Bolt and NO-CAL Hollow Shaft PVT Mounting Kit Installation Procedure
TIP 6.1.1-16	Installation Procedure for Sheave Full Cover Guard (w/Carpet Wiper) for 74 and 77 Machines


## Subject Matter Expert

Name	Department
Gary Mendrala	OSC Service Engineering

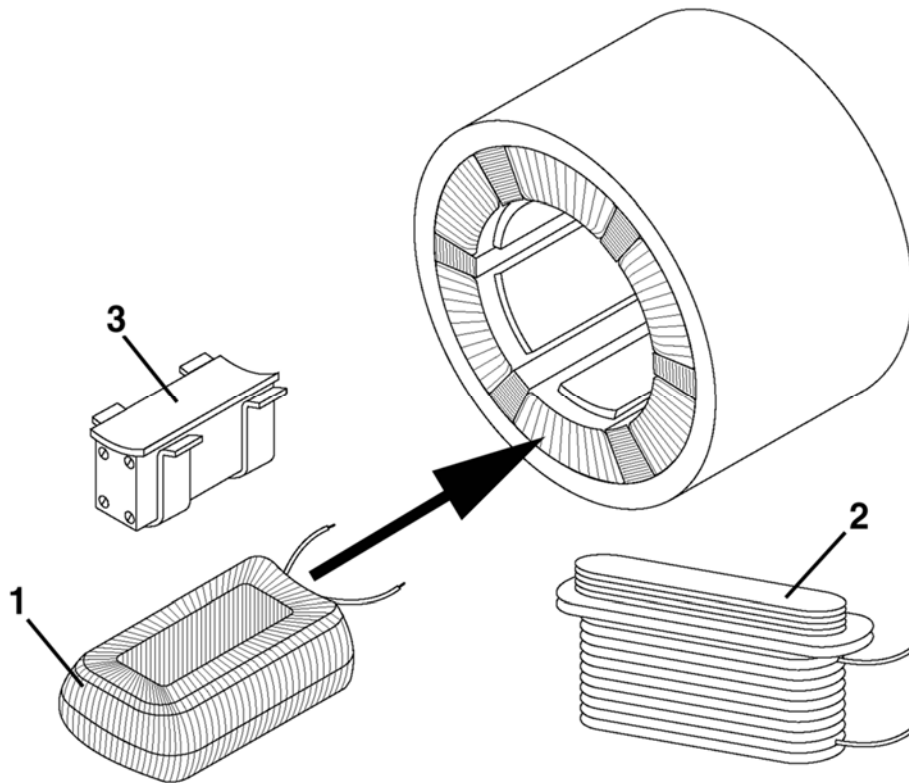
# Table of Contents

06-6913F



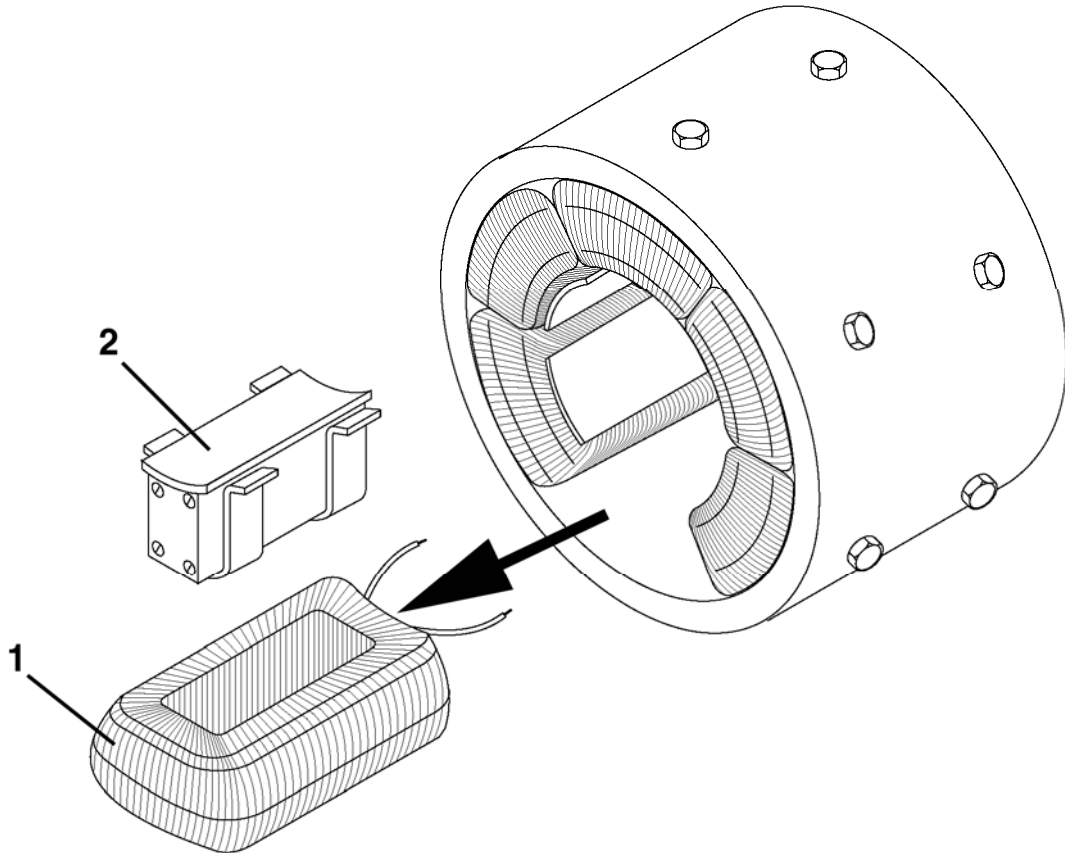
REF. No.	PAGE	DESCRIPTION
1	4	Coils, Motor Field, for Types 74, 74A, 74C Machines
2	5	Coils, Motor Field, for Type 74D Machine
3	6	Shaft, Armature
4	7	Parts, Brush Holder
5	8	Brush Stem Rigging Parts
6	9	Assembly, Brake, 74 Brake for 74 Machine
7	10	Assembly, Brake, 74A Brake for 74A Machine
8	11	Assembly, Brake, 74B Brake for 74A Machine
9	12	Assembly, Brake, Arm Parts for 74D Brake  74A, 74D Machines
10	13	74 Machine Brake Shoe and Lining Assembly
11	14	Assembly, Brake, Upper Lever
12	15	Assembly, Brake, Magnets & Coil
13	16	Sheave, Drive, Double-Wrap Traction
	17	Sheave, Drive, Single-Wrap Traction
14	18	Sheave, Type 6571B Secondary, & Shaft w/Babbitted Bearings
	19	Sheave, Type A6571B Secondary, & Shaft w/Babbitted Bearings
15	20	Sheave, Type 6939B Secondary, & Shaft w/Roller Bearings
16	21	Sheave Guard

# Motor Field Coils Types 74, 74A, 74C Machines



VINTAGE
395-TM, 538-TM

REF. No.	PART No.	DESCRIPTION
1	144145	Coil, Field, 185–240 V, for UMW Control MMM (Set of 6)
	144147	Coil, Field, 185–240 V, for UMW Control C.S. or 230 V Resistance Control (Set of 6)
	144149	Coil, Field, 500 V, for Resistance Control (Set of 6)
2	144131	Coils, Field, Interpole, for 742 Turn Armature
	144133	Coils, Field, Interpole, for 790 Turn Armature
	144135	Coils, Field, Interpole, for 868 Turn Armature
	144137	Coils, Field, Interpole, for 928 Turn Armature
	144139	Coils, Field, Interpole, for 1041 Turn Armature
	144141	Coils, Field, Interpole, for 1212 Turn Armature
	144143	Coils, Field, Interpole, for 1392 Turn Armature
3	143623	Piece, Pole

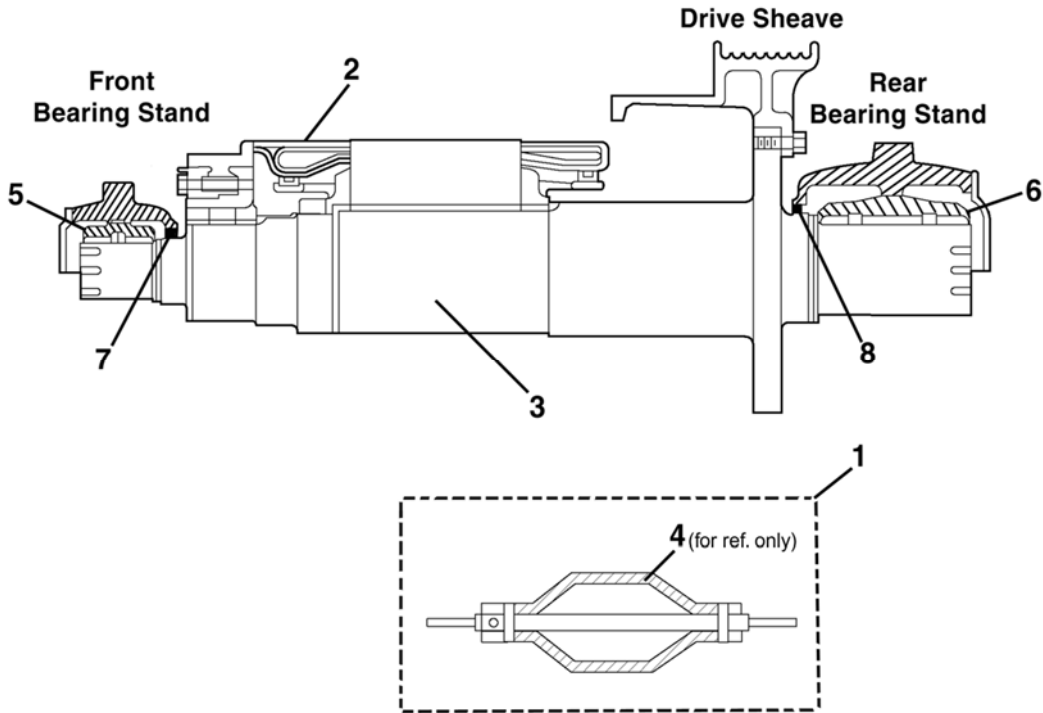


	VINTAGE	
	624-TM	
REF. No.	PART No.	DESCRIPTION
1	5411-III-*	Coil, Field (Set of 6)
	5412-III-*	
2	355AF1	Piece, Pole


\* There are multiple coil possibilities. To order the proper coil, supply data plate information.

06-6913F

# Armature Shaft

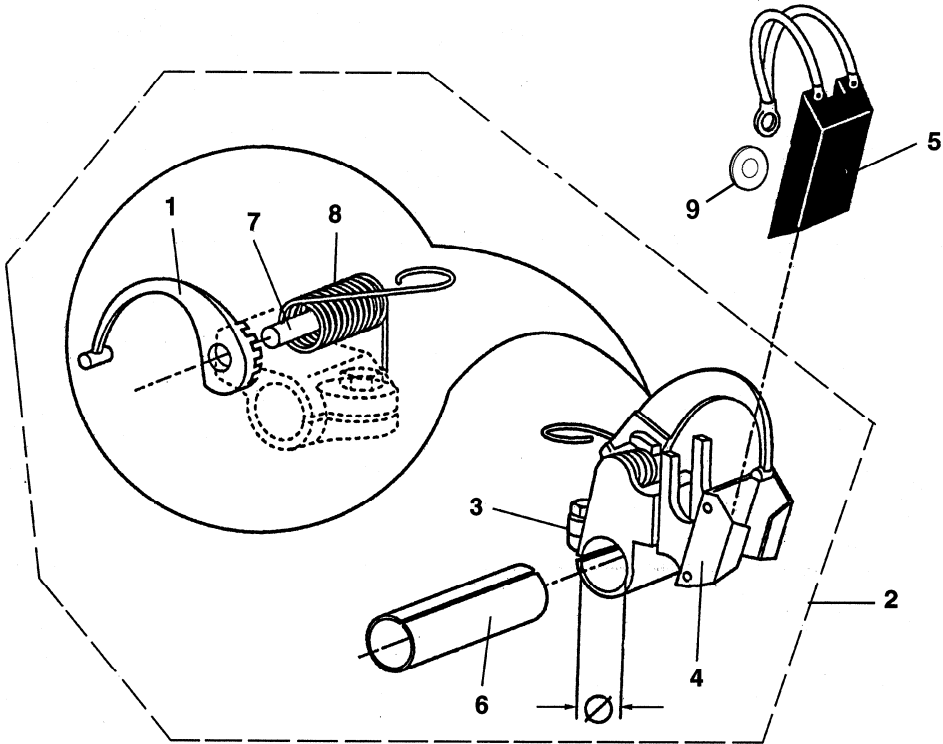


VINTAGE  
395-TM, 624-TM, 6913D

REF. NO.	PART or ML	PRODUCTION	DESCRIPTION
---	AAA332BP1	---	Chain, 1/4 in. Chain Oil
1	AAA21410E4	---	Kit, Hollow Shaft Repair Bolt (  TIP 6.1.0-5)
2	---	---	Set, Armature Coil—Contact OSC Spare Lending
3	460N2	1930–1949	Shaft, Armature, Solid
		Post–1949	
4	---	---	Shaft, Armature, Hollow (hollow shaft is not a part of the repair bolt kit)
5	126053	Pre–1930	Sleeve, Motor Shaft Front Bearing (Cadtex Babbitt)
	206T1	Post–1930	
6	430870 473805 206W2 206W1	---	Sleeve, Motor Shaft Rear Bearing (Cadtex Babbitt)
7	AAA488M2	Pre–1938	Strip, Felt, Front End
	33A3	1938–1949	Seal, Oil, Front End
	33E2	Post–1949	
8	AAA488M9	Pre–1938	Strip, Felt, Rear End
	33A6	1938–1949	Seal, Oil, Rear End
	33E4	Post–1949	

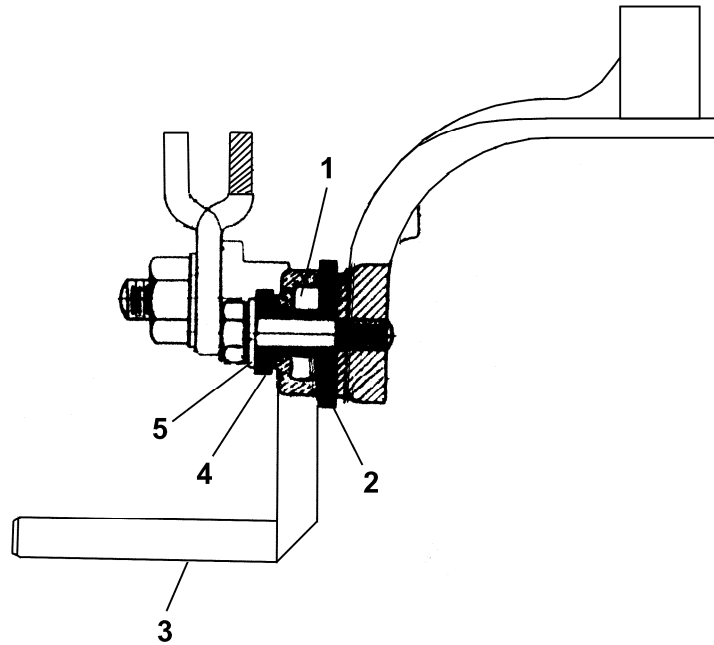
# Brush Holder Parts

06-6913F



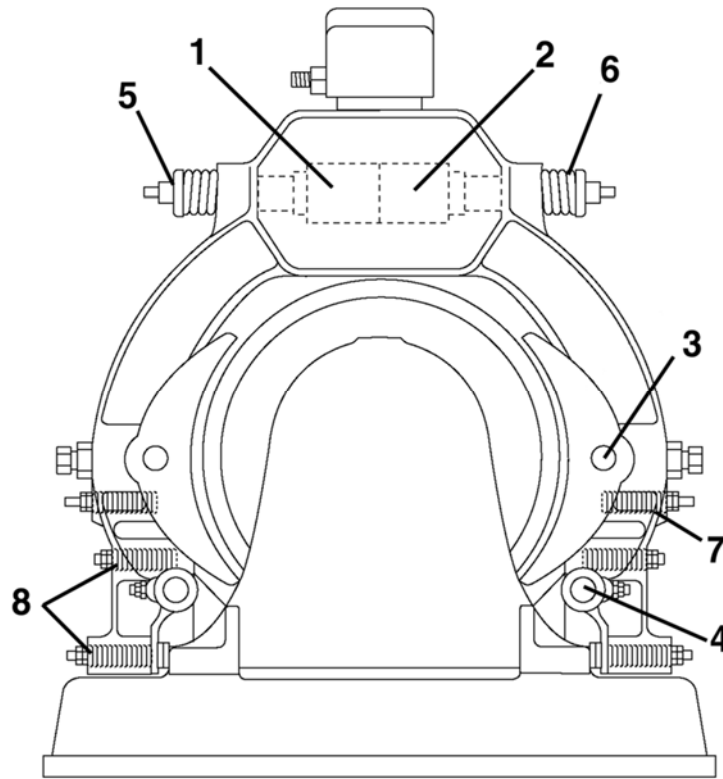
VINTAGE  
395-TM, 624-TM,  
6913D

REF. No.	PART No.	DESCRIPTION
1	288CD1	Arm, Brush Holder
2	6134G1	Assembly, Brush Holder for 5/8 in. x 1-1/2 in. Brush, "D" = 0.625 in.
	6134G4	Assembly, Brush Holder for 3/8 in. x 1 in. Brush, "D" = 0.625 in.
	6134G5	Assembly, Brush Holder for Voltage Feedback 3/8 in. x 1 in. Brushes, "D" = 0.650 in.
3	430622 306GM1	Base, Brush Holder for p/n 6134G1 & 4
	306GM2	Base, Brush Holder for p/n 6134G5
4	430620 178T2	Box, Brush Holder for p/n 6134G1
	178H2	Box, Brush Holder for p/n 6134G4 & 5
5	240F25	Brush, Carbon 5/8 in. x 1-1/2 in.
	240F26	Brush, Carbon 3/8 in. x 1 in.
6	298DF128	Insulating Strip, Mylar for p/n 6134G3 Brush Holder
7	808040	Pin
8	92A4	Spring
9	840374 128A8	Washer, Brass



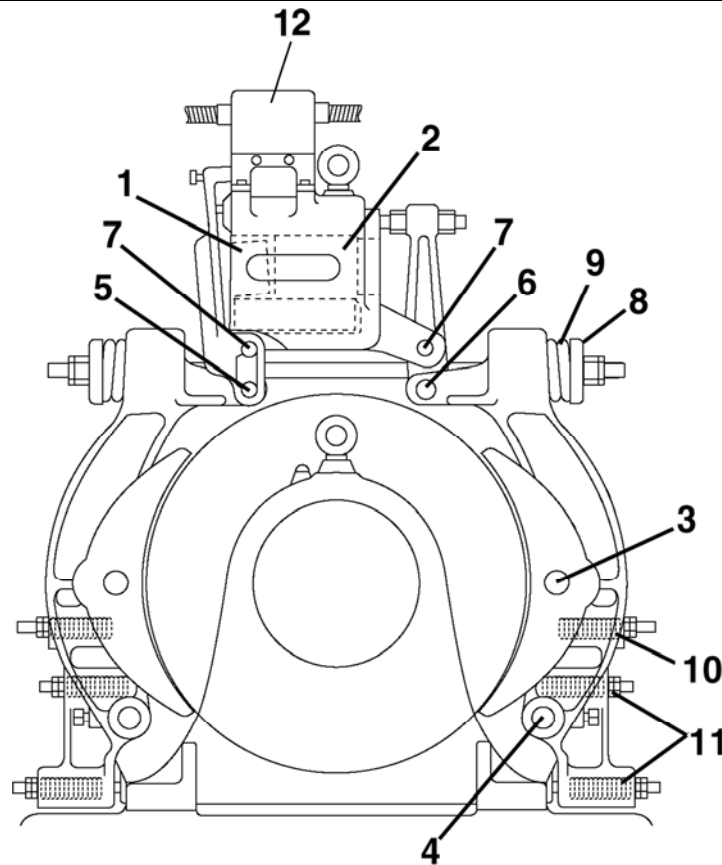
VINTAGE		
395-TM		
REF. No.	PART No.	DESCRIPTION
1	806655	Bushing, Insulating (for brush stem)
2	126085	Plate, Insulating
3	126083	Stem, Brush
4	10838	Washer, Insulating
5	85490 127AE8	Washer, Standard, 1/2 in.




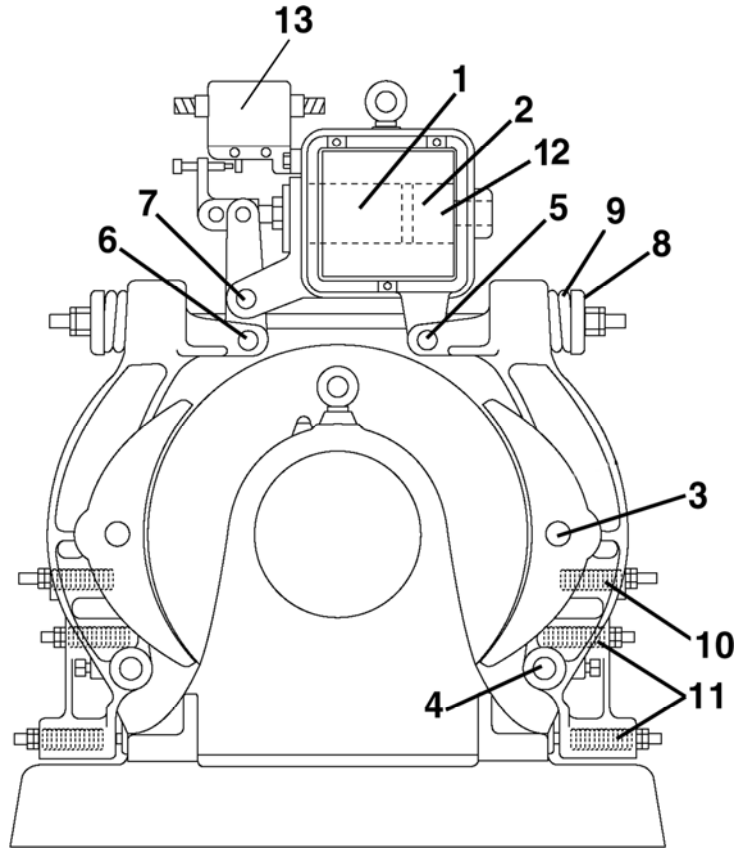


VINTAGE
395-TM

REF. No.	PART No.	DESCRIPTION
1	126711	Core, Magnet, w/Four Tapped Holes 5/16 in.
2	126712	Core, Magnet, w/o Tapped Holes
3	806938	Pin, Brake Shoe, 1-3/4 in. $\varnothing$ , 7-3/4 in. L
4	806939	Pin, Brake Arm, 1-3/4 in. $\varnothing$ , 8-7/8 in. L
5	810083	Seat, Spring
6	<del>810085</del> 90ND1	Spring, 5 in. $\varnothing$ , 7.5 in. L
7	<del>806948</del> 90SC6	Spring, Brake Shoe, 1-3/4 in. $\varnothing$ , 6-1/4 in. L
8	<del>806947</del> 90AD5	Spring, Stop, 1-3/4 in. $\varnothing$ , 5-5/8 in. L



VINTAGE		
A395-TM		
REF. No.	PART No.	DESCRIPTION
1	140655	Core, Magnet, Movable
2	140440	Core, Magnet, Stationary
3	806938	Pin, Brake Shoe, 1-3/4 in. $\varnothing$ , 7-3/4 in. L
4	806939	Pin, Brake Arm, 1-3/4 in. $\varnothing$ , 8-7/8 in. L
5	811278	Pin, Magnet Case Hinge
6	810088	Pin, 1-1/8 in. $\varnothing$ , 7 in. L
7	810087	Pin, 1-3/8 in. $\varnothing$ , 7-1/2 in. L
8	810083	Seat, Spring
9	<del>810085</del> 90ND1	Spring, 5 in. $\varnothing$ , 7.5 in. L
10	<del>806948</del> 90SC6	Spring, Brake Shoe, 1-3/4 in. $\varnothing$ , 6-1/4 in. L
11	<del>806947</del> 90AD5	Spring, Stop, 1-3/4 in. $\varnothing$ , 5-5/8 in. L
12	---	 SPL C-740 Brake Switch

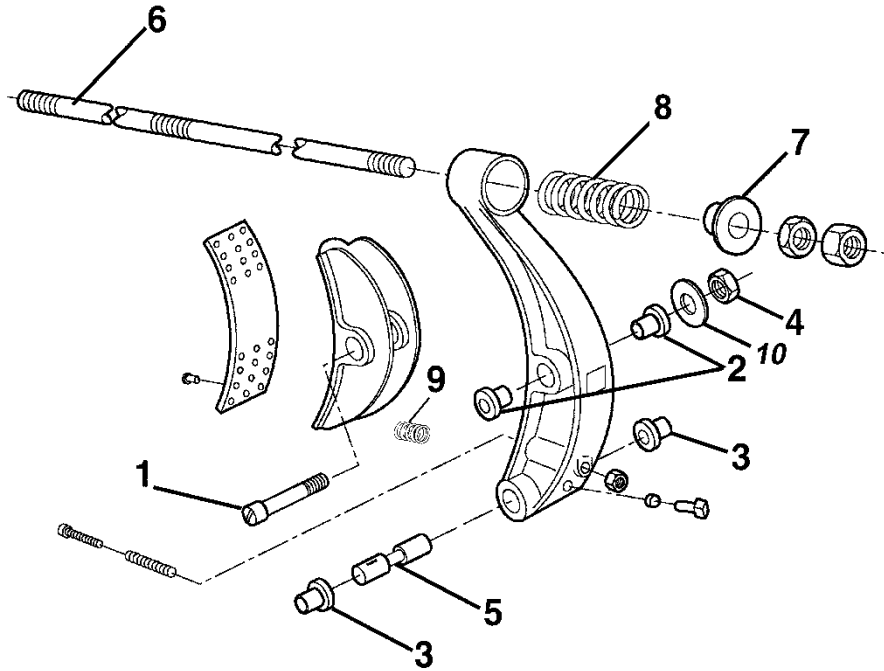


VINTAGE
A395-TM, B395-TM

REF. No.	PART No.	DESCRIPTION
1	149727	Core, Magnet, Movable
2	149728	Core, Magnet, Stationary
3	806938	Pin, Brake Shoe, 1-3/4 in. $\varnothing$ , 7-3/4 in. L
4	806939	Pin, Brake Arm, 1-3/4 in. $\varnothing$ , 8-7/8 in. L
5	811278	Pin, Magnet Case Hinge
6	810088	Pin, 1-1/8 in. $\varnothing$ , 7 in. L
7	810087	Pin, 1-3/8 in. $\varnothing$ , 7-1/2 in. L
8	810083	Seat, Spring
9	810085 90ND1	Spring, 5 in. $\varnothing$ , 7.5 in. L
10	806948 90SC6	Spring, Brake Shoe, 1-3/4 in. $\varnothing$ , 6-1/4 in. L
11	806947 90AD5	Spring, Stop, 1-3/4 in. $\varnothing$ , 5-5/8 in. L
12	811276	Washer, Leather
13	---	SPL C-740 Brake Switch

# Brake Assembly Arm Parts

## 74D Brake for 74A & 74D Machines



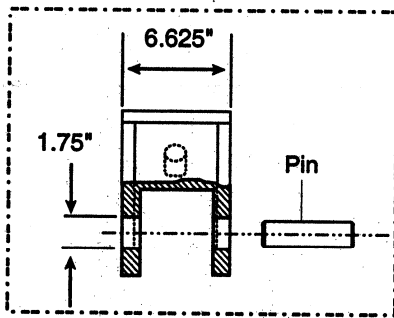
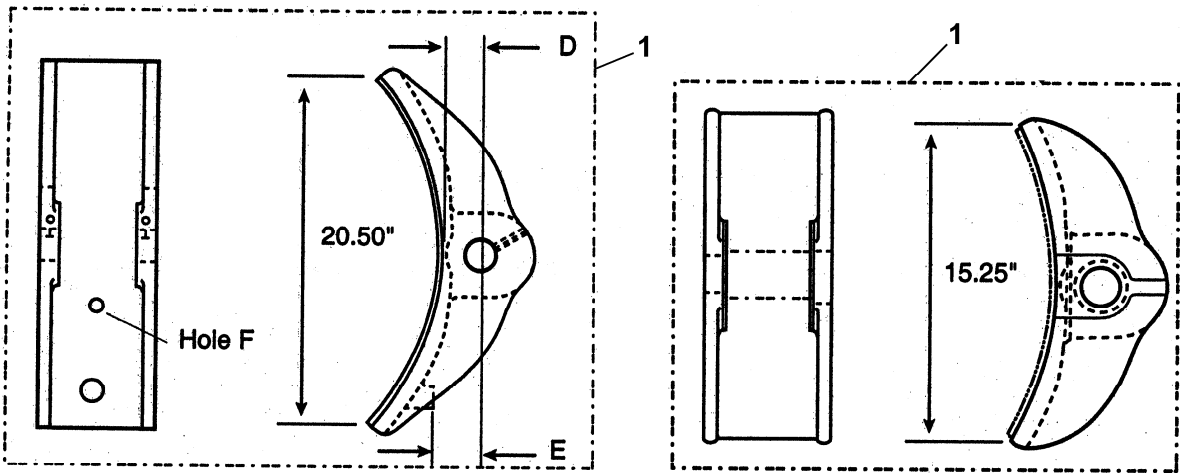
VINTAGE	
395-TM	6913E
624-TM	A6913E

395-TM	6913E
624-TM	A6913E

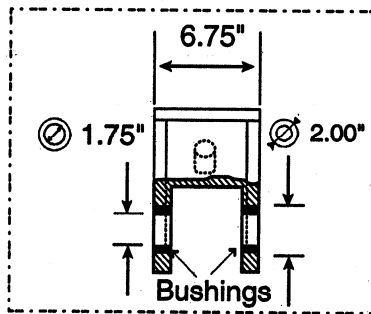
REF. NO.	PART or ML		DESCRIPTION
1	806938	59BF2	Bolt, Shouldered
2	---	335E72	Bushing, Bronze
3	---	335H28	Bushing, Bronze (in Field Frame)
4	67G16		Nut, Elastic Stop
5	83368	77GB7	Pin, 1.75 in. $\varnothing$ , 8 in. L
6	160230		Rod
7	810083		Seat, Spring
8	840085	90ND1	Spring, 5 in. $\varnothing$ , 7.5 in. L
9	<del>8925</del>	90KC2	Spring, 1.5 in. $\varnothing$ , 2.75 in. L
10	---		Washer, 1/2 SAE

# 74 Machine Brake Shoe and Lining Assembly

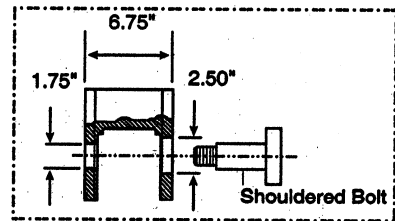
06-6913F



P/N's A415R5, A415R7, A415R9



P/N A415R11



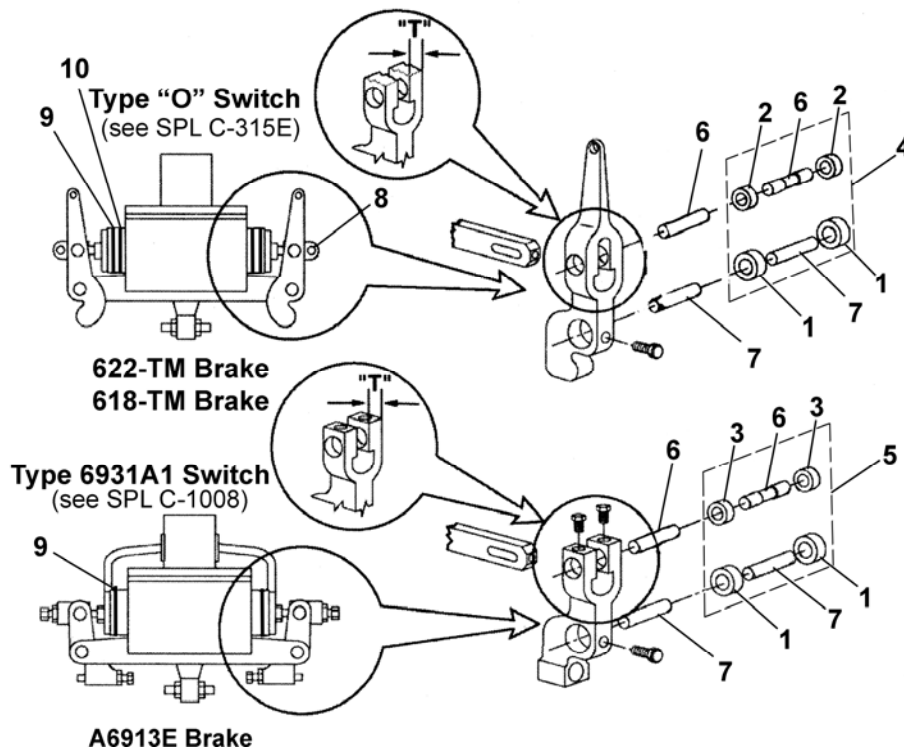
P/N A415R2

REF. No.	PART No.	DESCRIPTION
	VINTAGE 395-TM, A395-TM, B395-TM, 6913E, A6913E	
1	A415R2	Shoe, Brake Without Hole "F". D=2.5 in.
	A415R5*	Shoe, Brake With Hole "F". D=3 in., E=3.25 in.
	A415R7*	Shoe, Brake With Hole "F". D=2.25 in., E=2.5 in.
	A415R9*	Shoe, Brake Without Hole "F". D=2.25 in.
	A415R11*	Shoe, Brake With Hole "F". D=3 in., E=3.25 in.

**NOTE:** All gearless machines must use brake arms that are lined with Green Gripper® lining supplied factory-bonded by OSC for US offices.

\* Returned and re-worked upon receipt by OSC per individual machine number. Customers get same arms in return.

# 74 Machine Brake Assembly— Upper Lever

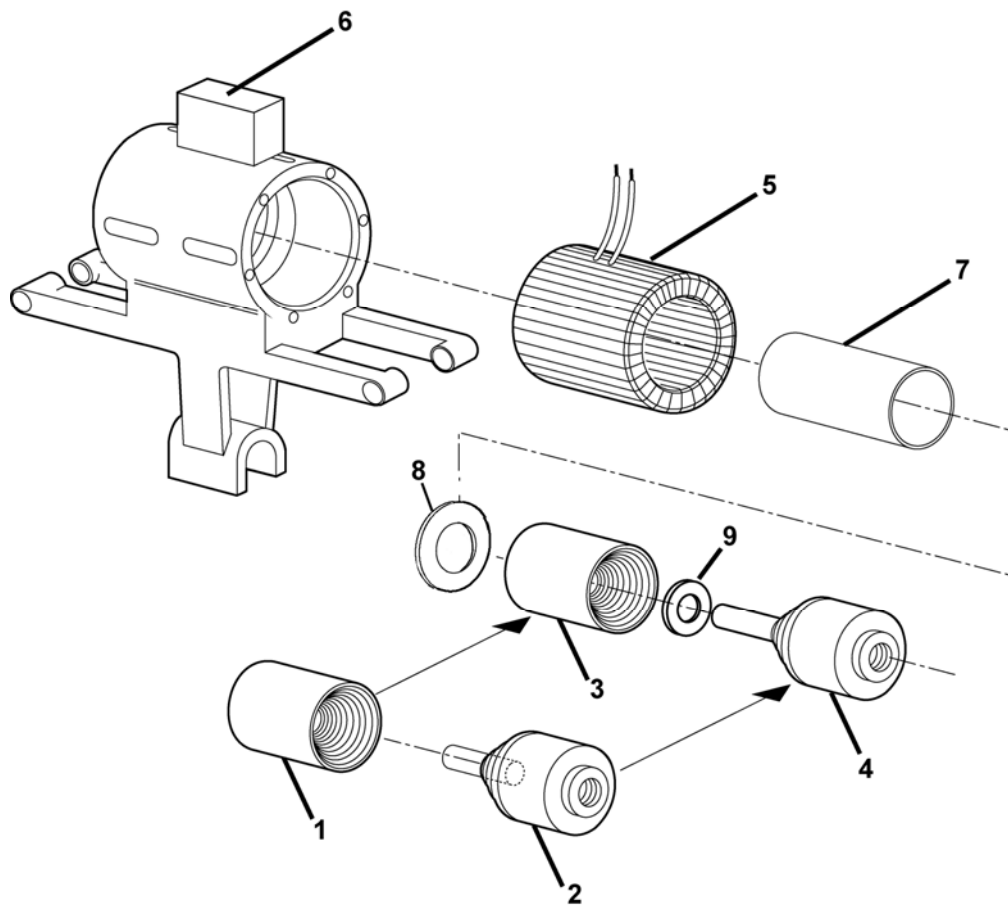


VINTAGE		
622-TM 618-TM	A6913E	Needle Bearing Upgrade

REF. NO.	PART or ML		DESCRIPTION	"T"
1	---	209A7	Bearing, Needle	---
2	---	209A15	Bearing, Needle	3/4 in.
3	---	VP-704375	Bearing, Needle	1 in.
4	---	2700AD5	Kit for Both Levers, Consisting of References 1, 2, 6, 7	
5	---	2700AD2	Kit for Both Levers, Consisting of References 1, 3, 6, 7	
6	83326	82AH1	Pin (original version)	
	---	GS1-82AH1	Pin (needle bearing, upgraded version for ref. 4 or ref. 5,  NOTE 1)	
7	83339	---	Pin (original version)	
	---	GS1-82R1	Pin (needle bearing, upgraded version for ref. 4 or ref. 5  NOTE 1)	
8	810863	---	Pin	
9	812406		Washer, Brass (for 622-TM, 618-TM – 8 pieces for each side) (for A6913E and upgraded – 10 pieces for each side)	
	128AG29			
	128AG54			
10	812407	---	Washer, Leather	

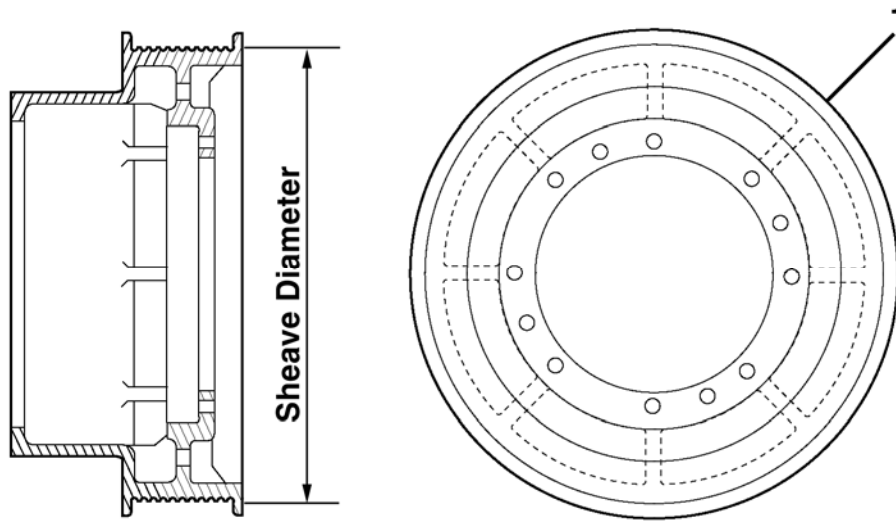
**NOTE 1:** Only order if ref. 1, 2, and 3 are present.

**NOTE 2:** Contact OSC for brake upgrade. Refer to service engineering letter #9A, dated 01/15/1965.



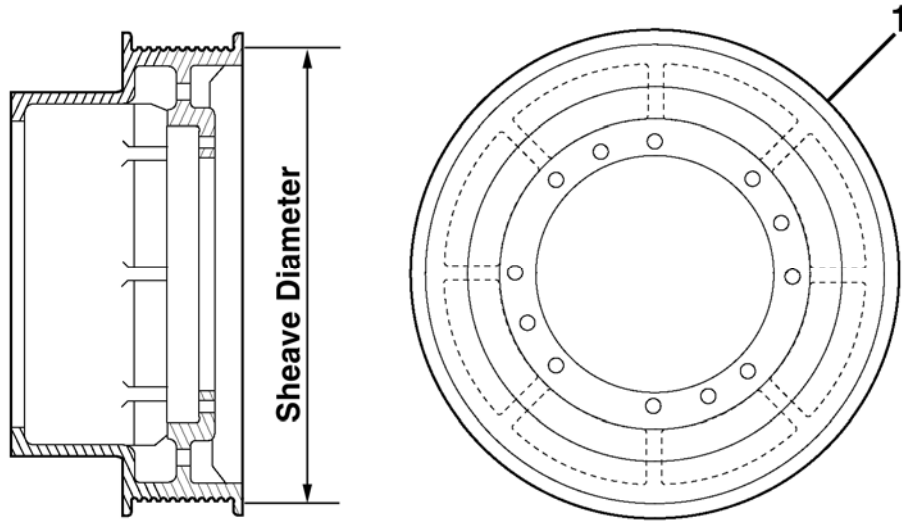
		VINTAGE		
		622-TM	6913E	
REF. NO.	PART or ML	DESCRIPTION		
1	400CE1*	Assembly, Magnet Core, Female w/Pin		
2	400CG4*	Assembly, Magnet Core, Male, w/Liner Insert		
3	GS1-400CE5	Assembly, Magnet Core, Female, w/Liner Insert & Switch Arm		
4	GS1-400CG6	Assembly, Magnet Core, Male, w/Pin & Switch Arm		
5	173094	Coil, Brake. 14 Ohms		
	185784	Coil, Brake. 6 Ohms		
	131587	Coil, Brake. 15 Ohms		
6	6931A1	Switch, Brake		
7	473688      136AG3	Tube, Magnet Core, 18.25 in. L, 5 in. ⌀		
8	128AG54	Washer (use quantity as required), 5-3/4 in. ⌀, 1/64 in. Thick		
9	GS2-128AG1      ---	Washer		

**NOTE:** If either reference 1 or 2 need replacing, you must order both ref. 3 (p/n GS1-400CE5) and ref. 4 (p/n GS1-400CG6).



REF. NO.	VINTAGE		DESCRIPTION		
	PART (DWG. NUMBER)	SHEAVE	ROPE	GROOVES	
				SEATING	NO.
1	807561	30 in.	1/2 in.	Round	12
	814156		1/2 in.	Round	16
	807562	36 in.	5/8 in.	Round	12
	807563		1/2 in.	Round	12
	807758		5/8 in.	Round	10
	806906		1/2 in.	Round	16

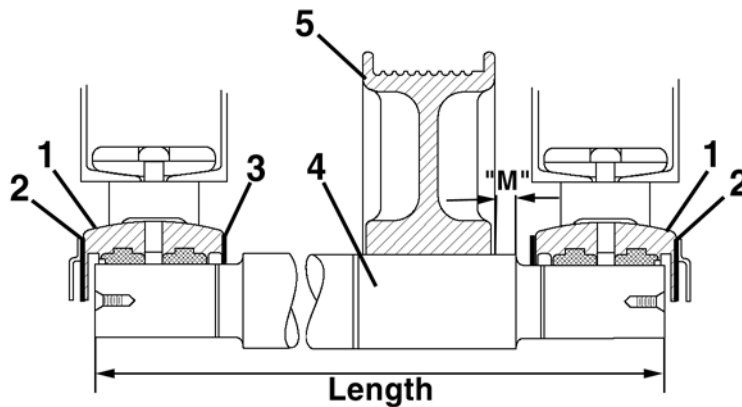




		VINTAGE			
		395-TM, 622-TM, 6913D		DESCRIPTION	
REF. NO.	PART (DWG. NUMBER)	SHEAVE	ROPE	GROOVES	
				TYPE	NO.
1	186024	36 in.	5/8 in.	90° Undercut	6
	186025			90° Undercut	7
	186026			105° Undercut	6
	186027			105° Undercut	7

06-6913F

## Secondary Sheave and Shaft (62 in. or 32-3/4 in.) w/Babbitted Bearings



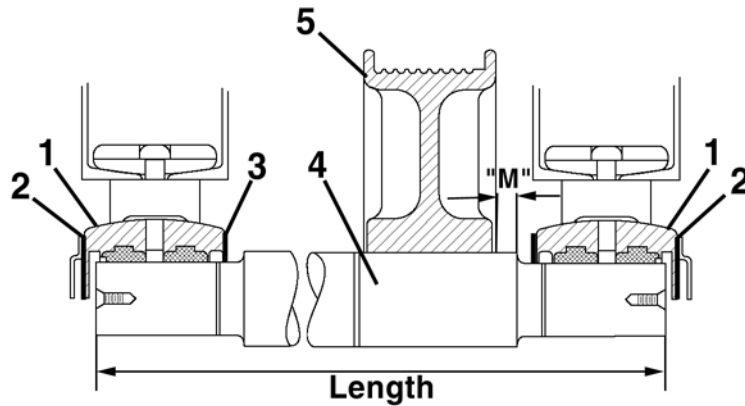
VINTAGE
395-TM 624-TM, A624-TM

REF. NO.	PART or ML	DESCRIPTION
1	403275 210AK1	Bearing, Shaft, Secondary Sheave, not Bored for Oil Seal, Type 6571B
---	AAA332BP1	Chain, 1/4 in. Brake Oil
2	376H3	Gasket, Type 6571B
3	403277 376BD2	Gasket, Vellumoid, Type 6571B
4	806935	Shaft, Secondary Sheave, 62 in. L
	<del>85934</del> 495AF1	Shaft, Secondary Sheave, 32-3/4 in. L

REF. NO.	PART or ML	DESCRIPTION	SHEAVE	ROPES ⊗ (in.)	GROOVES	"M" (in.)
5	804292	Sheave, Secondary	33	5/8	12	1-1/8 in.
	262G1					
	804933			1/2	12	
	262G2			1/2	16	
	<del>804995</del>		27	1/2	12	---
	807945		27	1/2	16	---
	814157					

# Secondary Sheave and Shaft (33-1/2 in.) w/Babbitted Bearings

06-6913F



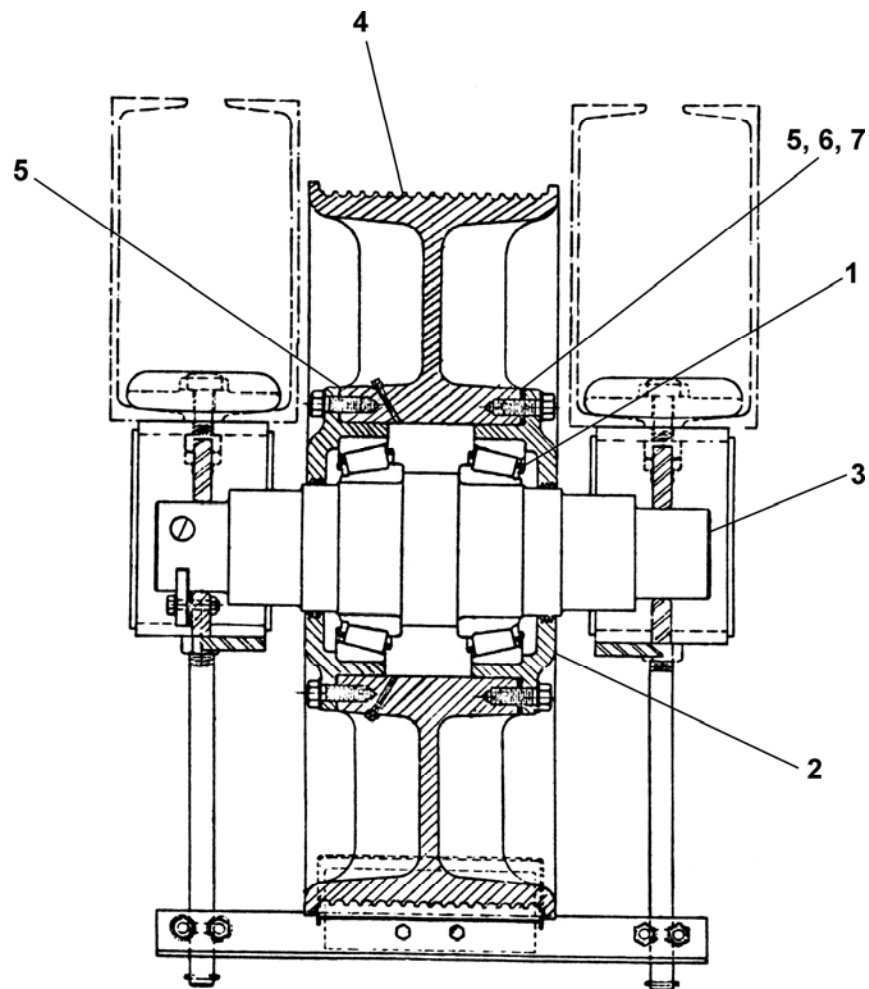
VINTAGE  
B624-TM  
6913D, A6913D




REF. NO.	PART or ML	DESCRIPTION	
1	A210AK1	Bearing, Secondary Sheave Shaft	Type A6571B
2	376H4	Gasket	
3	33D5	Seal, Oil	
4	A495AF1	Shaft, Secondary Sheave, 33-1/2 in. L	

REF. NO.	PART or ML	DESCRIPTION	SHEAVE ⊗	ROPES (in.)	GROOVES	"M" (in.)
5	A262G1	Sheave, Secondary	33	5/8	12	0
	A262G2		33	1/2	12	
	A262G3		33	1/2	16	

06-6913F

# Type 6939B Secondary Sheave Assembly w/Roller Bearing

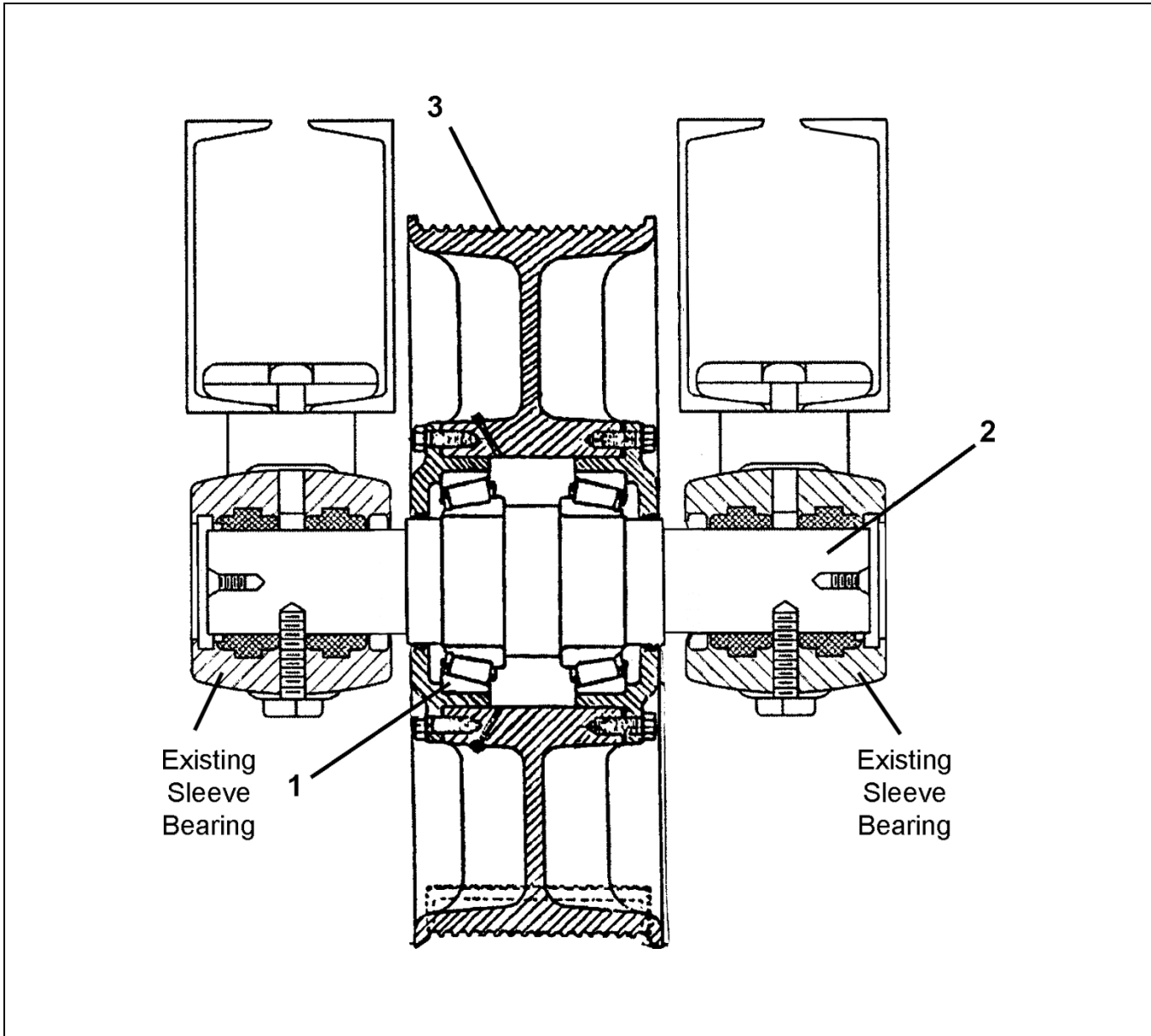


REF. NO.	VINTAGE	DESCRIPTION			
	395-TM, 6913D	SHEAVE	ROPES	GROOVES	
	PART or ML		 (in.)		
1	206B26 209B34	Bearing, Roller, $\varnothing = 10$ in.			
2	346XH4 2-346XH1	Cover,  NOTE			
3	495BK1	Shaft, Secondary Sheave			
4	262J1	33	5/8	12	
	262J 2	33	1/2	16	
	262J4	33	1/2	12	
5	255VB22	Shim, Green, 0.003 in. Thick			
6	255VB23	Shim, Trans-Matte, 0.0075 in. Thick			
7	255VB24	Shim, Yellow, 0.020 in. Thick			

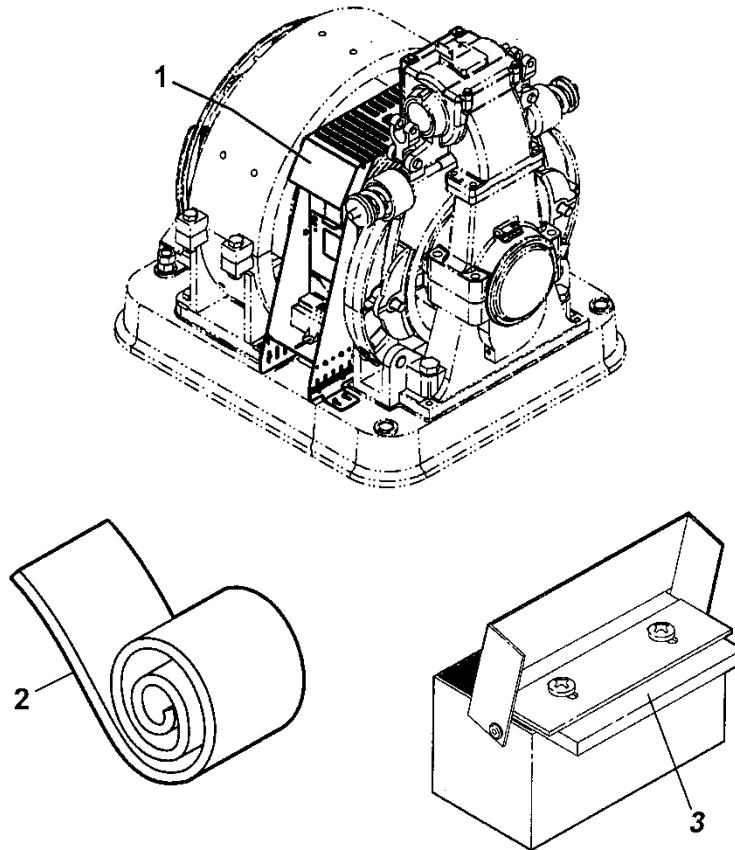
**NOTE:** For replacement instructions, see TA-III-7-1.

# Secondary Sheave Babbitted to Roller Bearings Conversion

06-6913F



REF. NO.	VINTAGE	DESCRIPTION	GROOVES		SHEAVE
	PART or ML		QTY.	ROPES ⊗ (in.)	
1	209B34	Bearing, Roller			
2	---	Shaft, <b>NOTE:</b> Contact OSC Engineering			
3	262J1	Sheave, Secondary	12	5/8 in.	33 in.
	262J2	Sheave, Secondary	16	1/2 in.	33 in.
	262J4	Sheave, Secondary	12	1/2 in.	33 in.



W/O VINTAGE		
REF. No.	PART No.	DESCRIPTION
1	---	Guard, Sheave (to order sheave guard, see TIP 6.1.1-16)
2	AAA297AY3	Strip, Carpet
3	AAA488M4	Wick, Lubricator Replacement