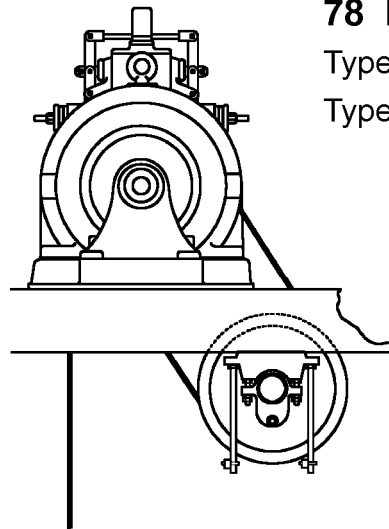
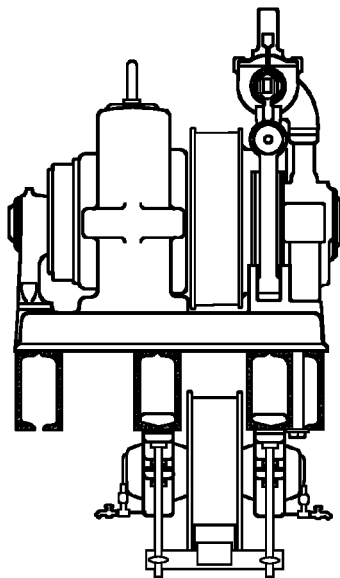


**#78 Machine**  
**Double-Wrap Traction**

**Spare Parts Leaflet**

**06-6950A**

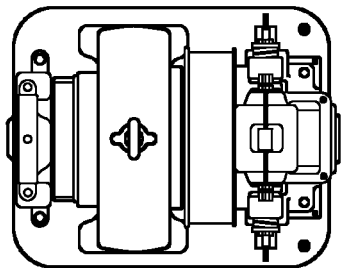
**July 1, 2003 / Page 1 of 6**



**78 Double-Wrap Traction**

Type 255 TM

Type 6950A



**OTIS**

This document does not contain any  
technical data subject to EAR or ITAR

**SERVICE ENGINEERING**  
**Otis Elevator Company**  
**Bloomfield, Connecticut USA**

Unpublished Work—© Otis Elevator Co.; 2003

**06-6950A**

# History

## Leaflet Description

The #78 machine is a DC gearless machine. A standard #78 is arranged for double-wrap traction (DWT). This leaflet covers the service parts for the NSAA manufactured #78 machine.

## Leaflet Revisions

Date Revised	Subject Matter Expert	Reason for Revision
July 1, 2003	Nicholas Grant	New SPL

## Related Drawings

Drawing No.	Title	Drawing No.	Title
6950A	#78 Assembly & General Arrangement Drawing	255-TM	#78 General Arrangement Drawing
589-SH	Drive Sheave	161-SH	Drive Sheave
A55-SH	Drive Sheave	A54-SH	Drive Sheave

## Related Documents

Document ID	Title
T.I.P. 6.0-1	Replacement of Brake Linings
T.I.P. 6.1.0-5	Gearless Machines with Hollow Armature Shaft
Service Engineering Letter 9A	Application of Brakes for Service Work

## Subject Matter Expert

Name	Department
Nicholas Grant	OSC, Service Engineering

## About Spare Parts Leaflets...

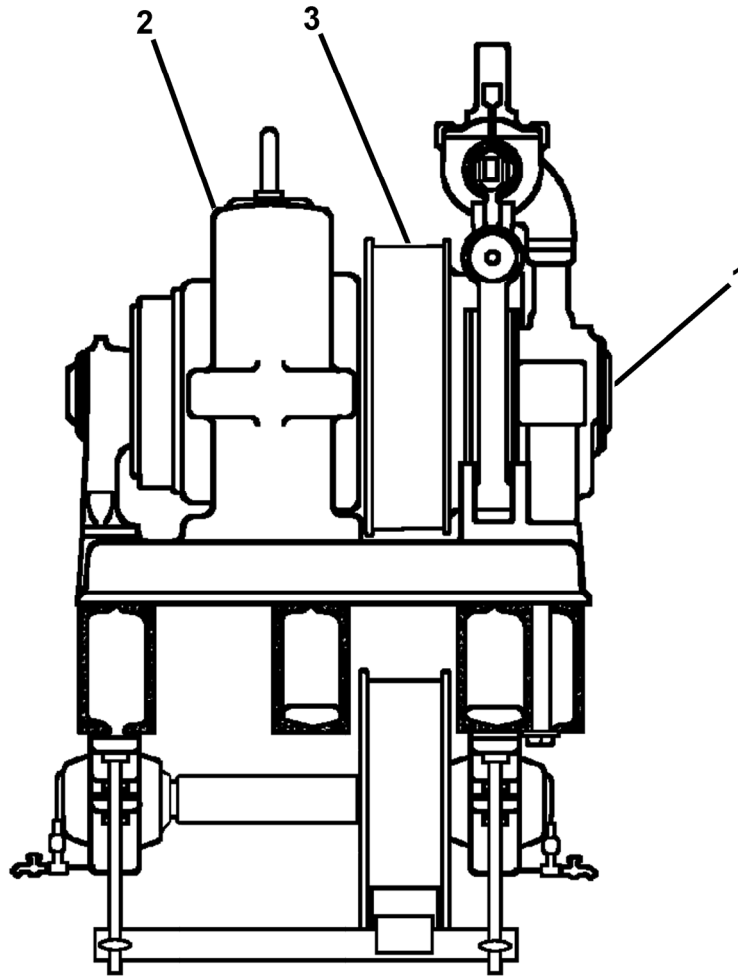
This document lists the lowest replaceable units (LRUs) for the standard version of the product. The LRUs are chosen by a team of Otis associates representing engineering and manufacturing.

While goal of this document is to make parts identification as easy as possible, the document cannot be all-inclusive. Elevator and escalator contracts classified as "special" or "custom" are not addressed here. For such contracts, please refer to specified information, the contract folder, TIPs, Field Education Articles, Construction Letters, etc. for further information.

If you have any suggestions about this document, please contact the subject matter expert listed on this page.

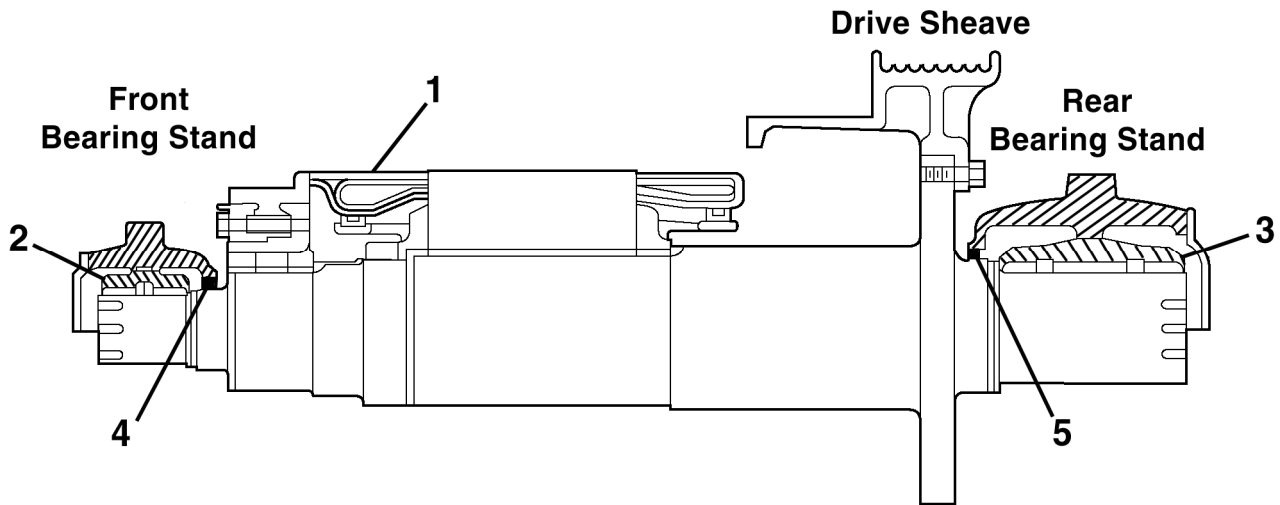
# Table of Contents

06-6950A



REF. NO.	PAGE No.	DESCRIPTION
1	4	Shaft, Armature
2	5	Parts, Brush Holder
3	6	Sheave, Drive

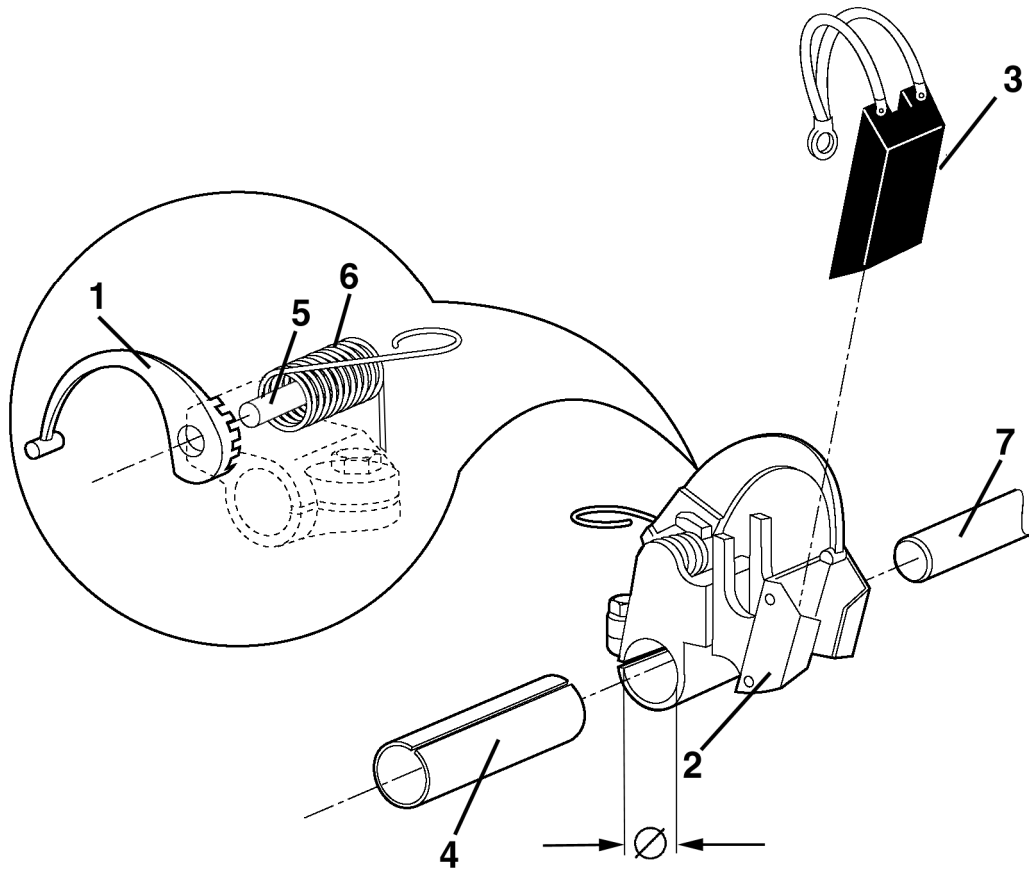
**Armature Shaft**



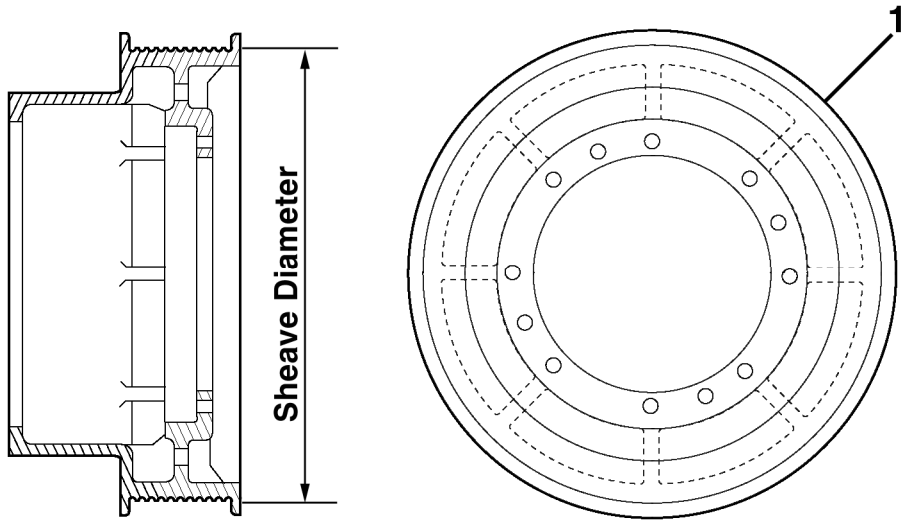
<b>W/O VINTAGE</b>		
<b>REF. No.</b>	<b>PART No.</b>	<b>DESCRIPTION</b>
1	---	Set, Armature Coil (contact OSC Spare Lending)
2	132551	Sleeve, Front Bearing (machine above)
	173949	Sleeve, Front Bearing (machine below)
3	132652	Sleeve, Rear Bearing (machine above)
	174241	Sleeve, Rear Bearing (machine below)
4	33A5	Seal, Oil, Front End (post 1933)
5	33A8	Seal, Oil, Rear End (post 1933)

# Brush Holder Parts

06-6950A



REF. No.	W/O VINTAGE	DESCRIPTION
	PART No.	
1	288CD1	Arm, Brush Holder
2	6134F1	Assembly, Brush Holder, 0.875 $\varnothing$ , for Brush p/n 240F28
	6134F2	Assembly, Brush Holder, 0.900 $\varnothing$ , for Brush p/n 240F26
	6134F3	Assembly, Brush Holder, 0.875 $\varnothing$ , for Brush p/n 240F24
3	240F26	Brush, 3/8 in. x 1.0 in.
	240F24	Brush, 1/2 in. x 2.0 in.
	240F28	Brush, 1/2 in. x 1-1/2 in.
4	298DF128	Insulator, for Brush Holder Assembly p/n 6134F2
5	808040	Pin
6	92A4	Spring
7	---	Stem, Brush



REF No.	W/O VINTAGE	DESCRIPTION		
	PART No.	Sheave $\varnothing$	Rope $\varnothing$	Grooves
1	801749	30 in.	5/8 in.	12
	83892	36 in.	3/4 in.	
	83891		5/8 in.	
	808571	40 in.	3/4 in.	