

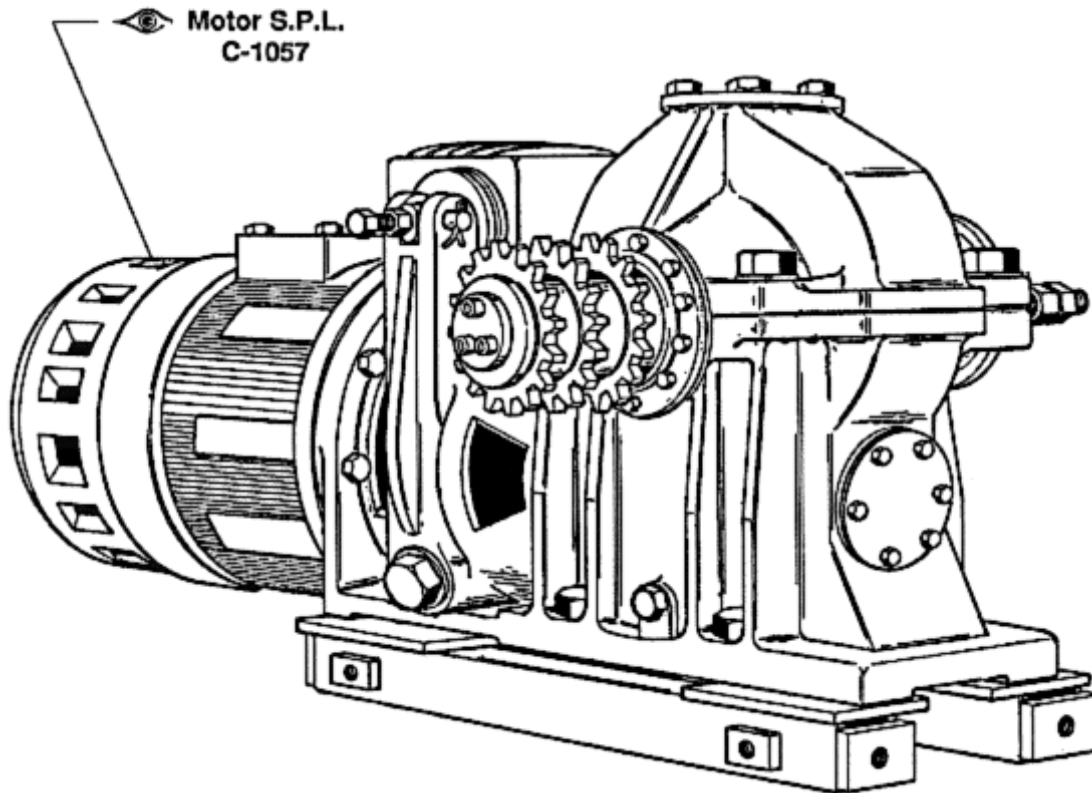
SPL 06-7078AG - 22CE Machine

Unpublished Work - © Otis Elevator Company. Any unauthorized reproduction, disclosure, or distribution of copies or content by any person of any portion of this work may be a violation of Copyright Law of the United States of America. All rights reserved.

October 1988

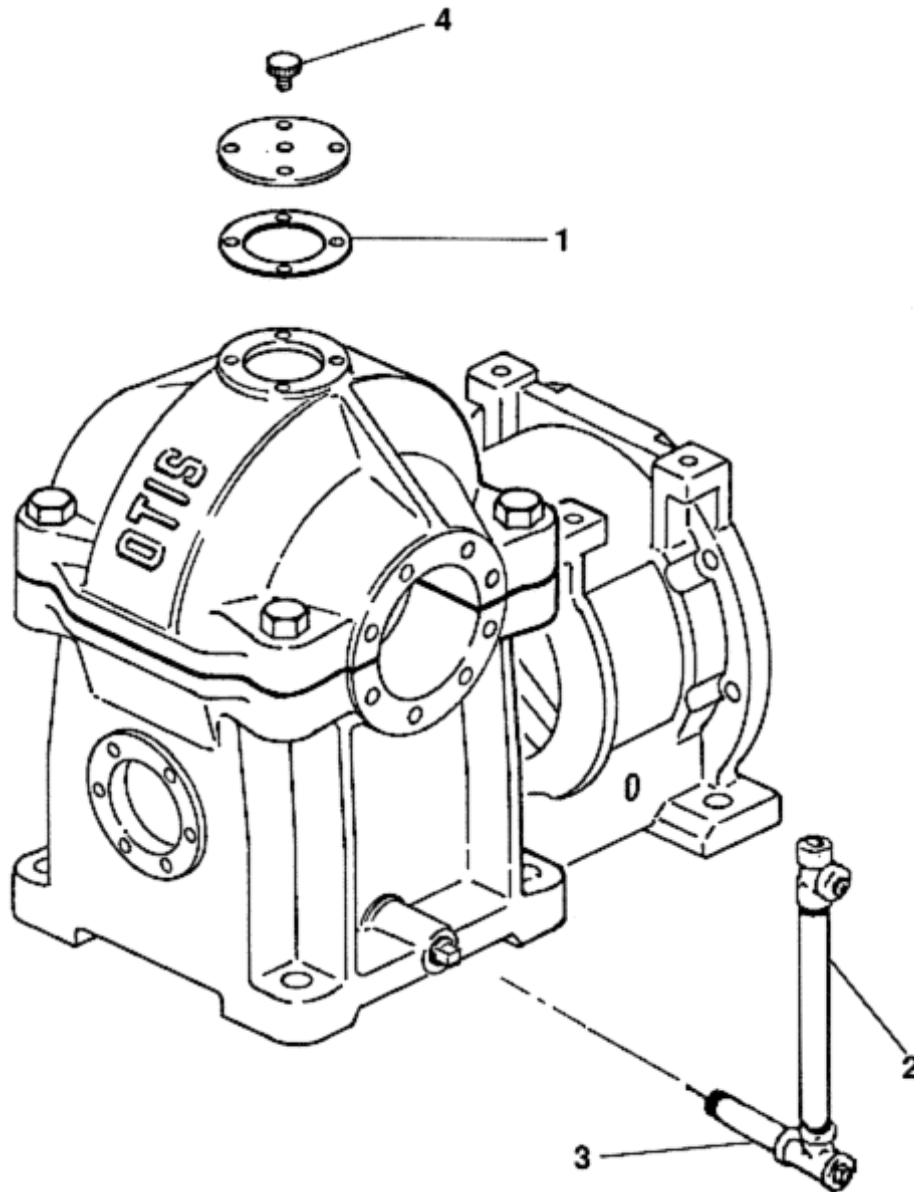
Page 1

W/O  
VINTAGE

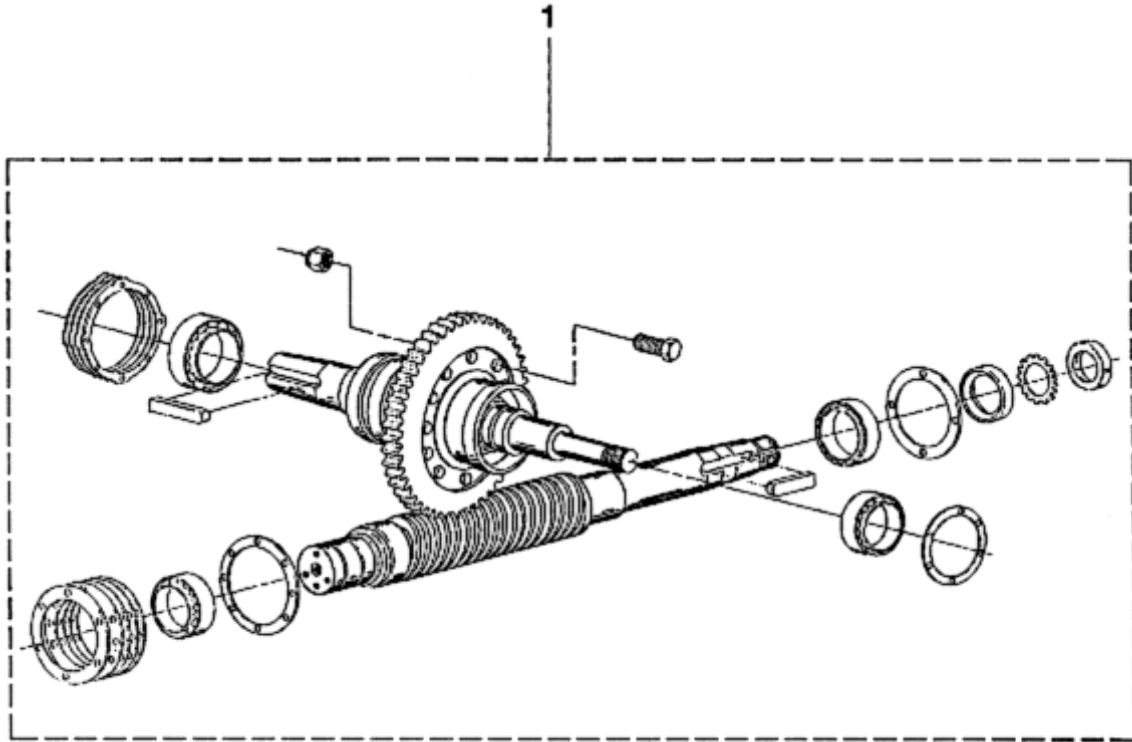


SPL 06-7078AG - 22CE Machine

Page 2 - MACHINE SPARE PARTS



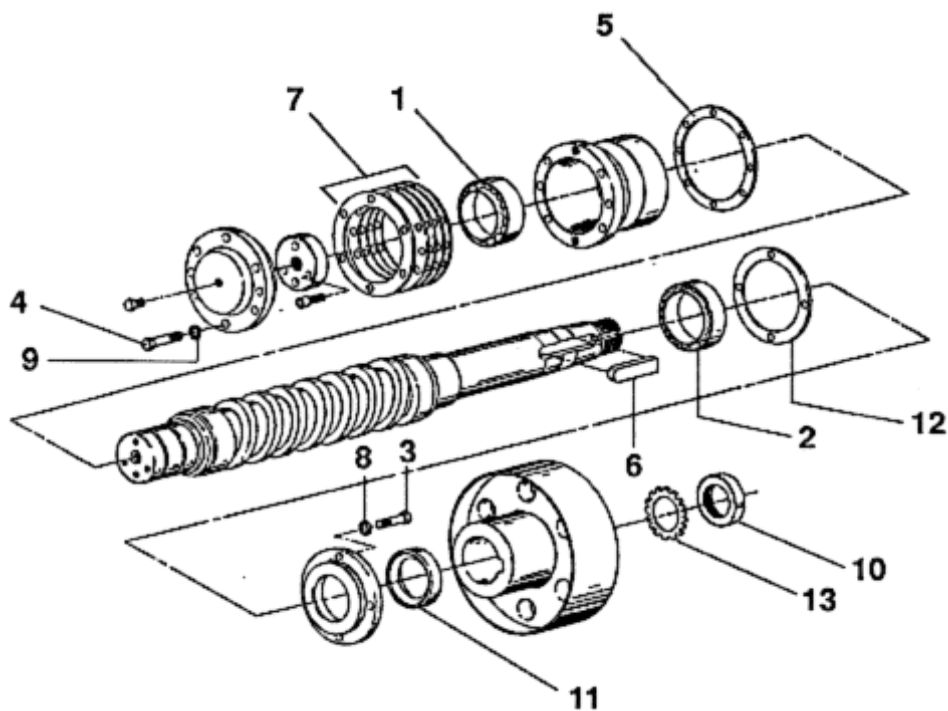
REF. No.	Without VINTAGE PART OR ML	DESCRIPTION
1	376H10	10 Gasket
2	377KA2	Pipe
3	377KA8	Pipe
4	435AT1	Ventilator, Air



	Without VINTAGE	
REF. No.	PART OR ML	DESCRIPTION
1	2700CAS1	Kit, Worm Shaft and Worm Gear, (for 90 fpm).
	2700CAS2	Kit, Worm Shaft and Worm Gear. (for 90/120 fpm)

## SPL 06-7078AG - 22CE Machine

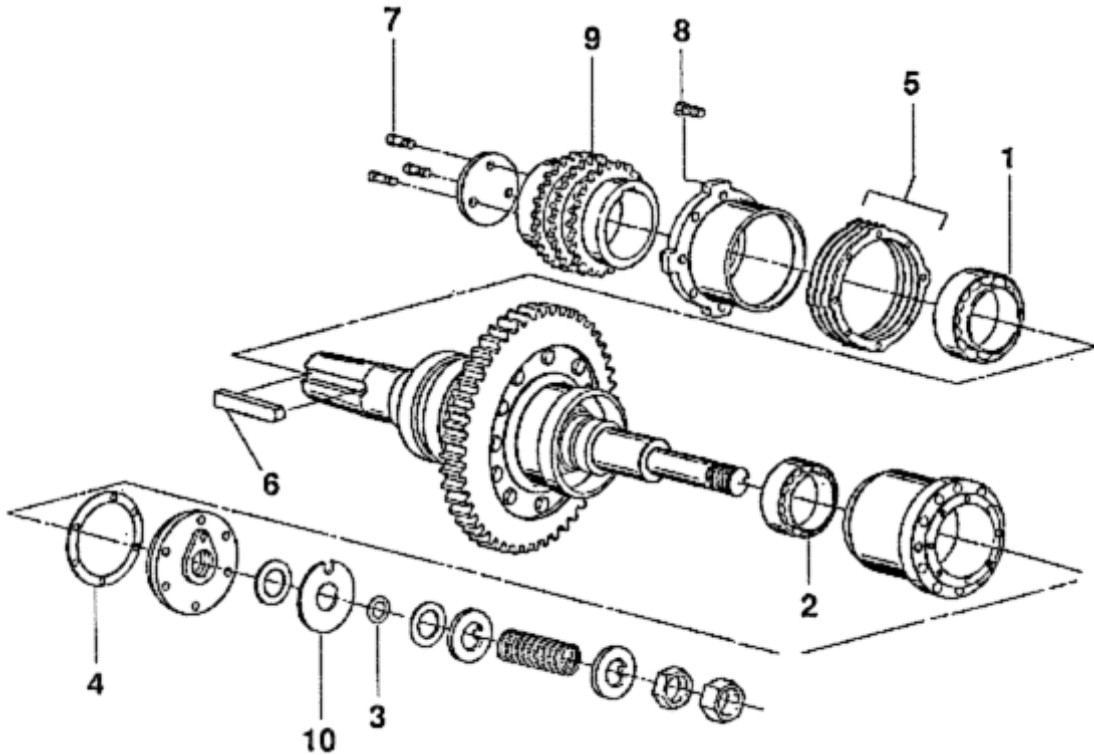
Page 4



REF. No.	Without VINTAGE PART OR ML	DESCRIPTION
1	209AB4	Bearing
2	207Z56	Bearing
3	BTFH3/8X1	Bolt, Finished Hex Head, 3/8X1
4	BTFH518X2-1/2	Bolt, Finished Hex Head, 518X2-112
5	376J51	Gasket
6	192G44	Key
7	2700CAS6Kit,	Shims (for worm shaft)
8	WSRSP3/8-1120	Lockwasher, Internal, 3/8"
9	WSRLK5/8	Lockwasher, Spring, 5/8
10	72BV11	Nut
11	33M2	Oil Seal
12	255HB50	Shim
13	130AA11	Washer

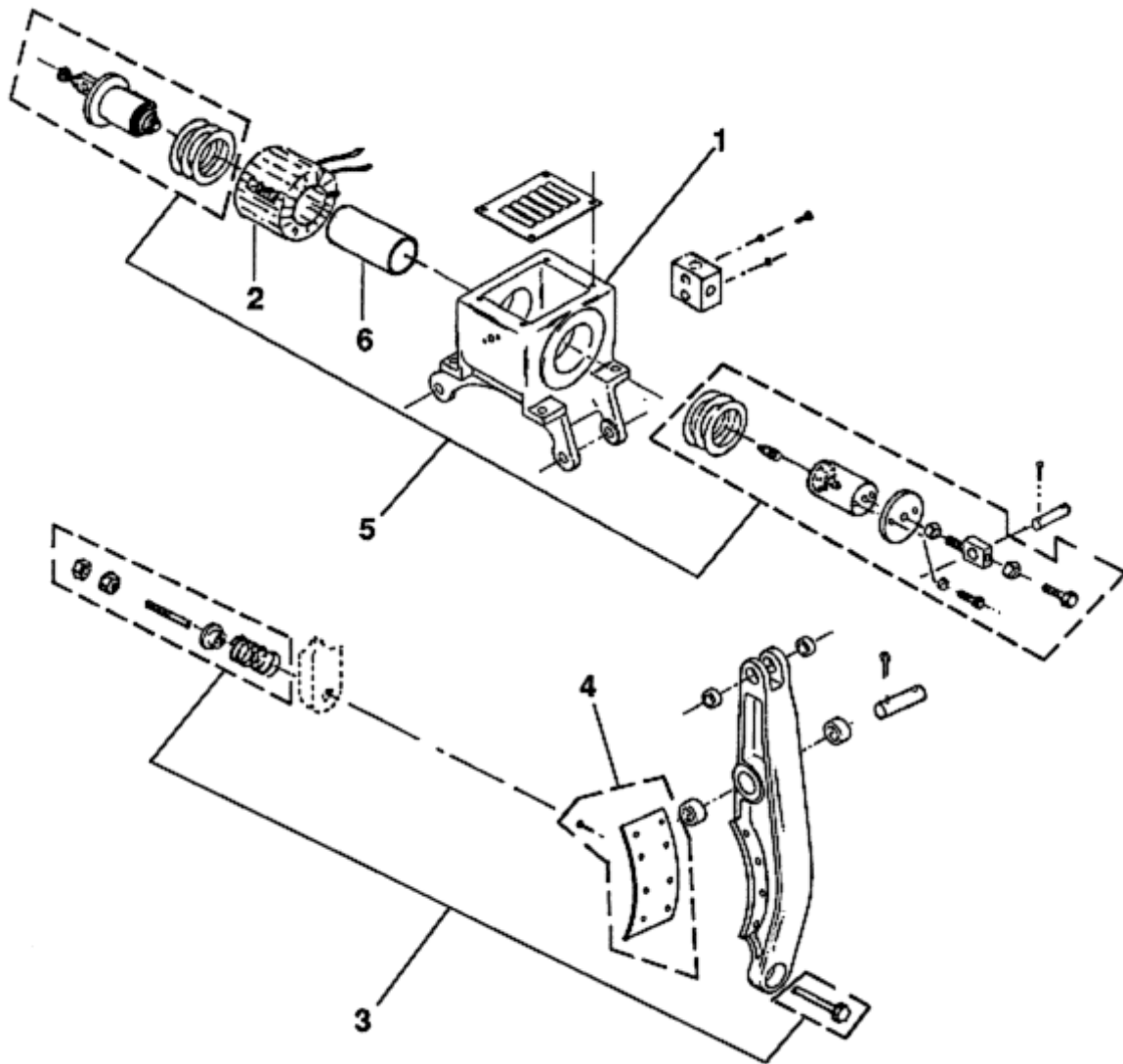
SPL 06-7078AG - 22CE Machine

Page 5



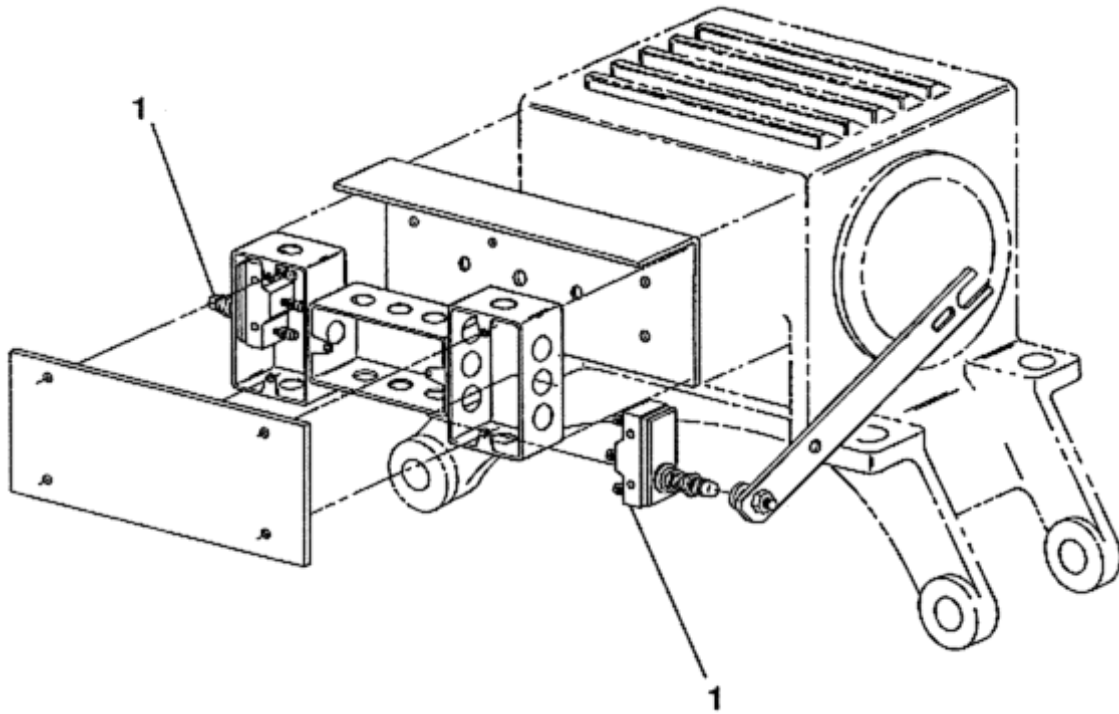
REF. No.	Without VINTAGE PART OR ML	DESCRIPTION
1	209B29	Bearing
2	209B30	Bearing
3	335E40	Bushing
4	376J43	Gasket
5	2700CAS7	Kit, Shims (for gear shaft)
6	192D69	Key
7	124CN5	Screw
8	SCCPHSOC5/8-11X2	Screw, Flanged Hex Cap
9	195GL12	Sprocket, Drive, 20 Teeth (for 90/120 fpm)
	195GL3	Sprocket, Drive, 21 Teeth (for 90 fpm)
10	131BE1	Washer

Page 6 - BRAKE PARTS



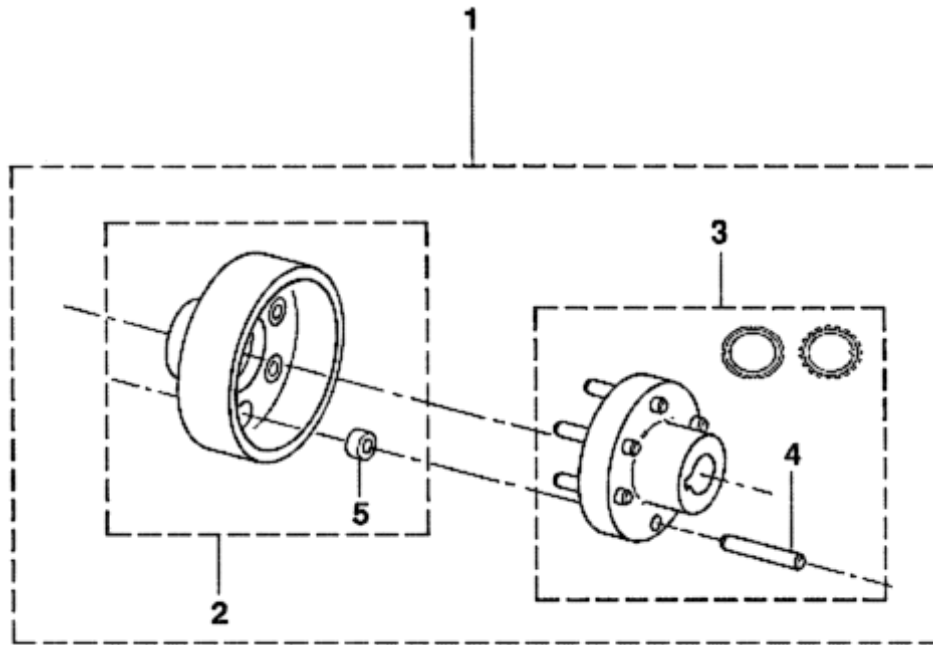
REF. No.	Without VINTAGE PART OR ML	DESCRIPTION
1	TYPE7078DN	Assembly, Brake Switch See Also Detail Page 7
2	222J11	Coil
3	2700CAS5	Kit, Brake Bolt Lever
4	2700CAS4	Kit, Brake Lining
5	2700CAS3	Kit, Male & Female Brake Magnet Core w/Shims
6	136R11	Tube Magnet Core

Page 7 - BRAKE SWITCH



	Without VINTAGE	
REF. No.	PART OR ML	DESCRIPTION
1	177Y1	Brake Switch

Page 8 - BRAKE COUPLING



Without VINTAGE		
REF. No.	PART OR ML	DESCRIPTION
1	A7078B1	Assembly, Brake Coupling
2	A215AT2	Assembly, Coupling, Female
3	2700CAS8	Assembly, Coupling, Male
4	78FA41	Pin
5	456C5	Roller