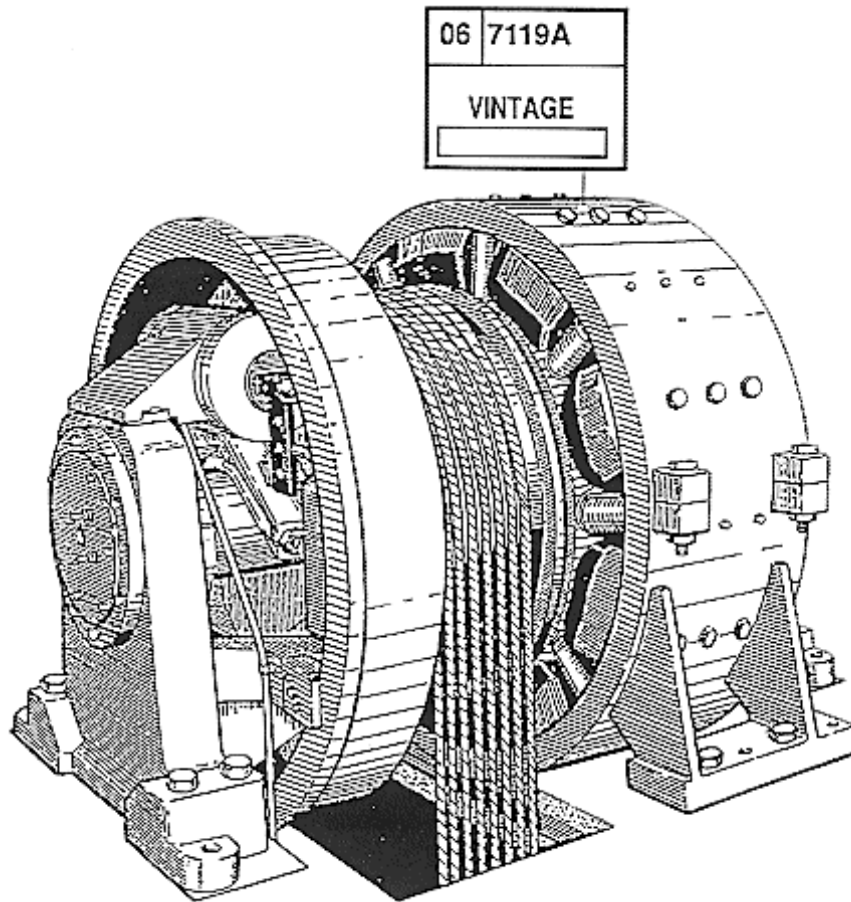


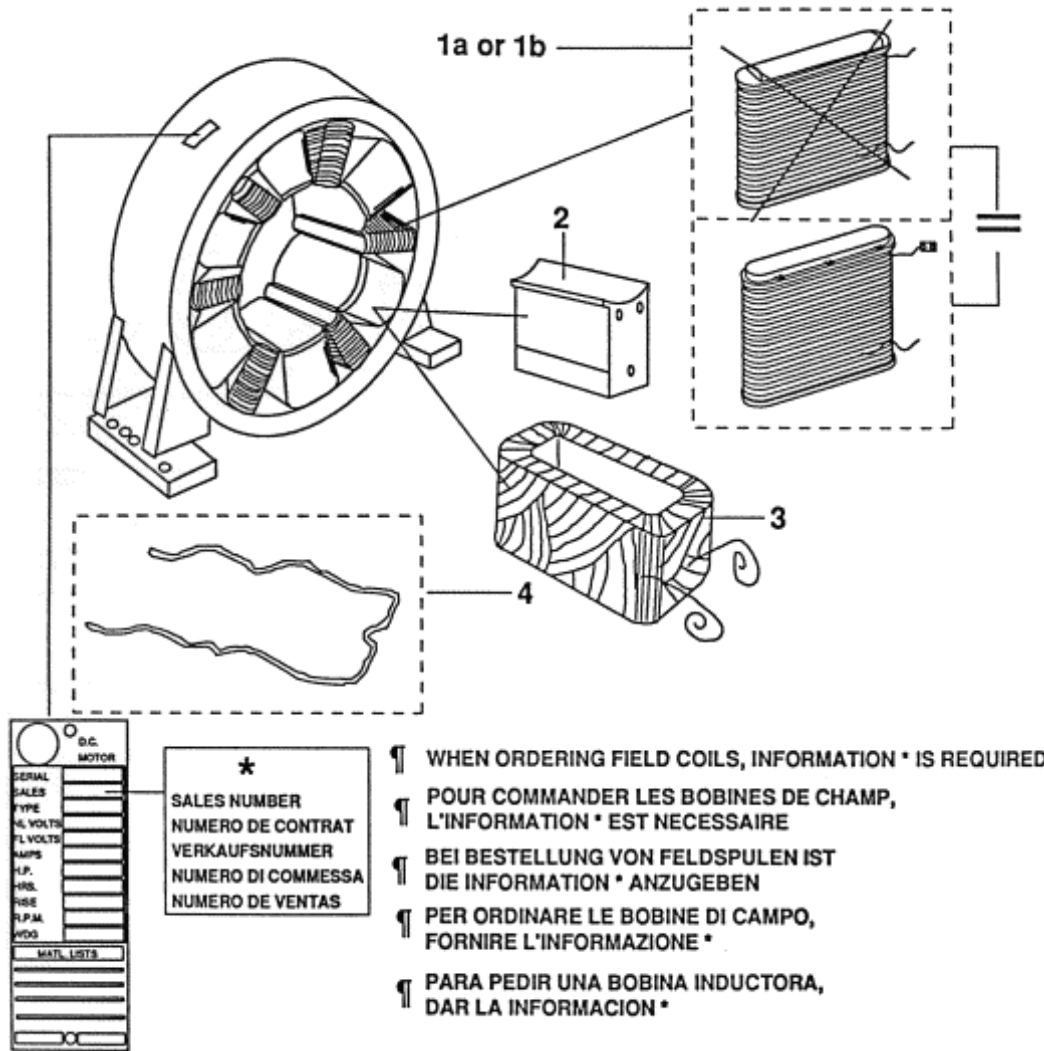
# SPL 06-7119A - Machine Gearless DC - 155 HT

Unpublished Work - © Otis Elevator Company. Any unauthorized reproduction, disclosure, or distribution of copies or content by any person of any portion of this work may be a violation of Copyright Law of the United States of America. All rights reserved.

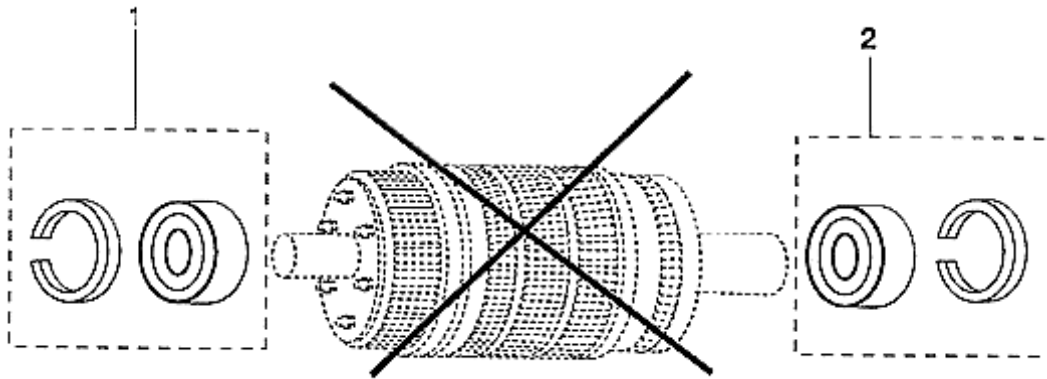
January 1995

Page 1

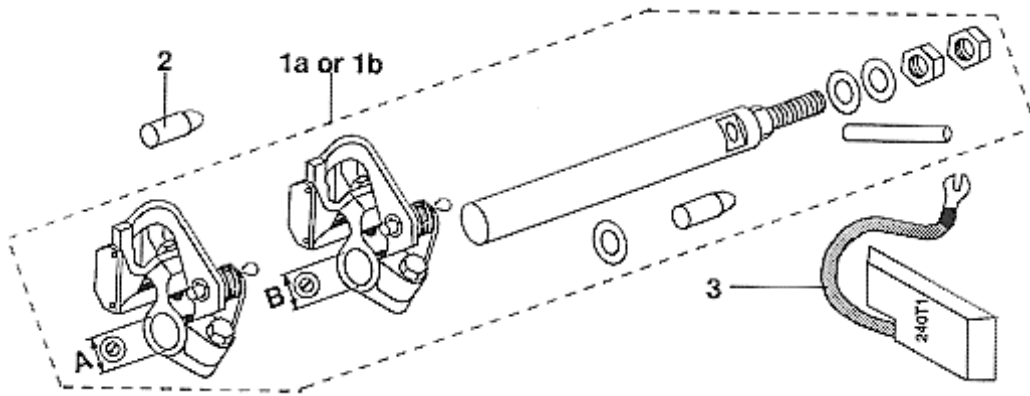




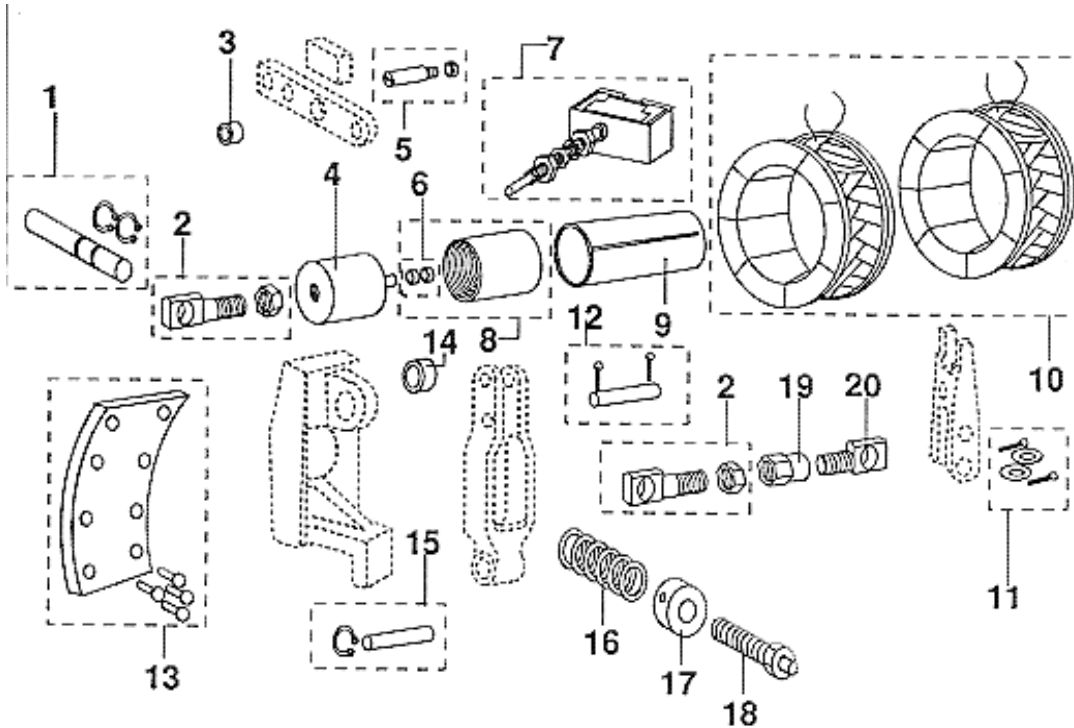
VINTAGE L01		L02	
REF No.	PART or ML		DESCRIPTION
1a	LAX219AH1		As Shown On Picture INTERPOLE COILS For Order Specify SET OF 6
1b	---	LXA219AH1	Interpole Coils for Order Specify Number Req.
	---	LXA219AH2	Interpole Coils for Order Specify Set of 6 Interpole Coils for Order Specify Number Req.
2	LX355AT500		Pole Piece
3	---‡		Field Coil
4	LX94AD1		Field Coil Spring



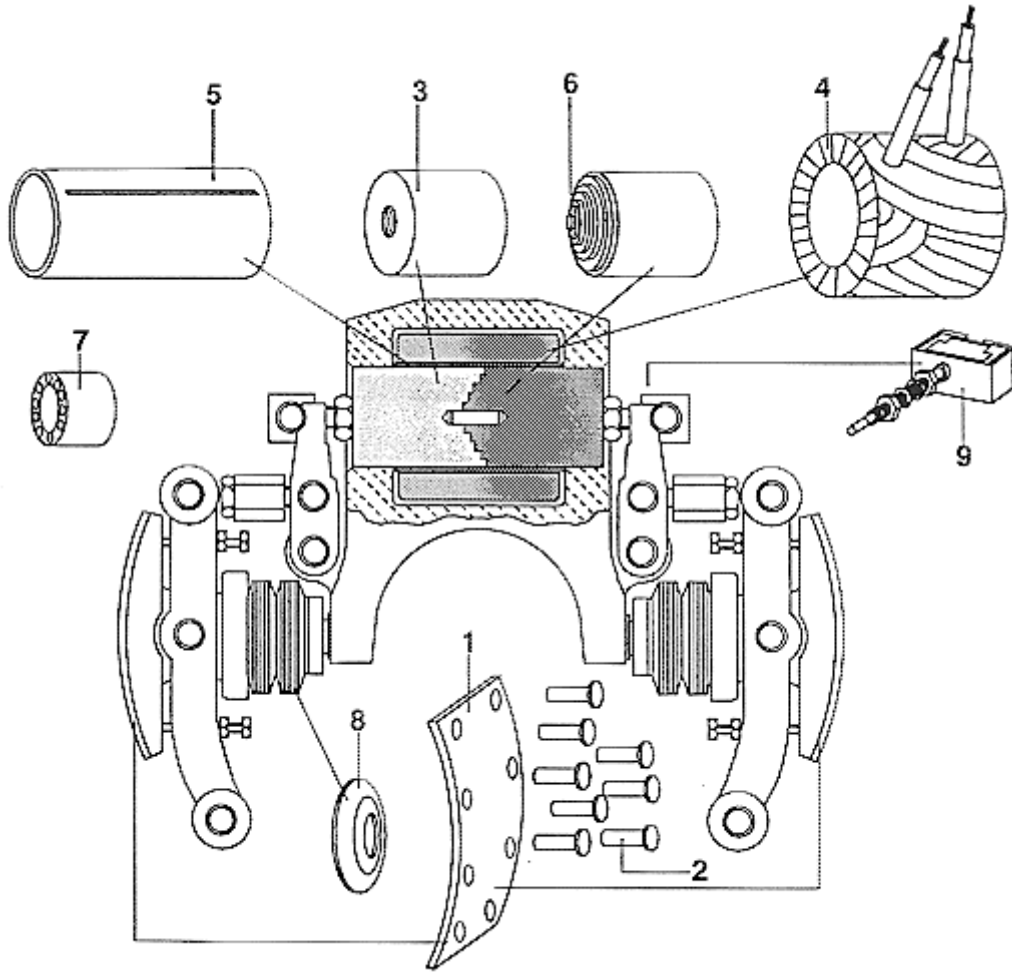
VINTAGE L01 L02		
REF No.	PART or ML	DESCRIPTION
1	LO2000FA233	Roller Bearings + Wicks
2	LO2000FA234	Roller Bearings + Wicks



VINTAGE L01 L02				
REF No.	PART or ML	DESCRIPTION		
1a	LO2000LD90	Brush Holder + Stem + Hardware for fastening	A = 22 mm ⊕	B = 22 mm ⊕
1b	LO2000LD91	Brush Holder + Stem + Insulation + Hardware for fastening	A = 23mm ⊕	B = 22 mm ⊕
2	444AX7	Protective Plug		
3	240T1	Brush for Order Specify 12 Off		

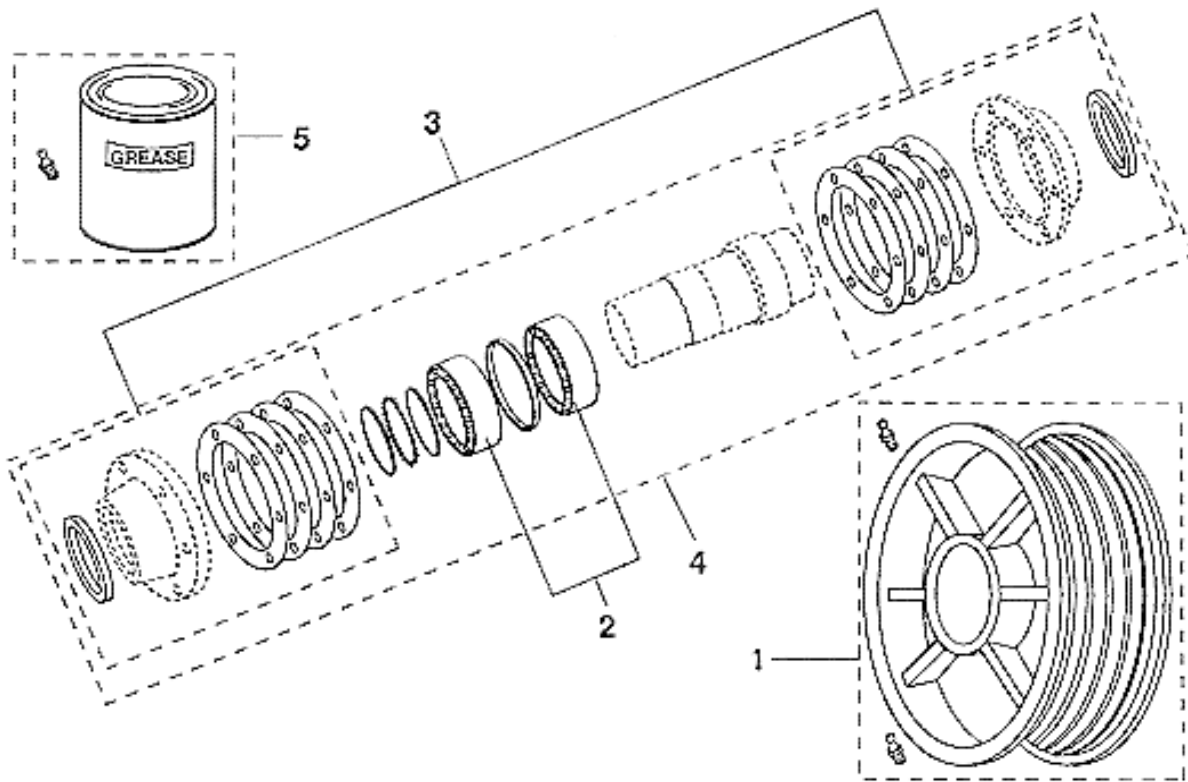


VINTAGE L01 L02		
REF No.	PART or ML	DESCRIPTION
1	LO2000FA213	Pin + Rings
2	LO2000FA212	Eyebolt + Hardware for Fastening
3	335E86	Oiless Bushing
4	400FF2	Magnet Core + Pin
5	LO2000FA217	Pin + Washer
6	LO2000FA210	Bearings
7	177AP1	Micro Switch Assembly
8	400FE2	Magnet Core
9	136R10	Tube, Magnet Core
10	LO2000FA211	Brake Coils
11	LO2000FA214	Pin + Felt Washers + Hardware for Fastening
12	LO2000FA221	Pin + Cotter Pins
13	LO2000FA215	Brake Lining + Rivets
14	212W3	Bearing
15	LO2000FA224	Pin + Retaining Ring
16	90JD4	Spring
17	72DS1	Nut
18	77VW1	Shouldered Rod
19	72CN2	Nut
20	56AL4	Eyebolt



TYPE LOA6022B INTERNAL BRAKE

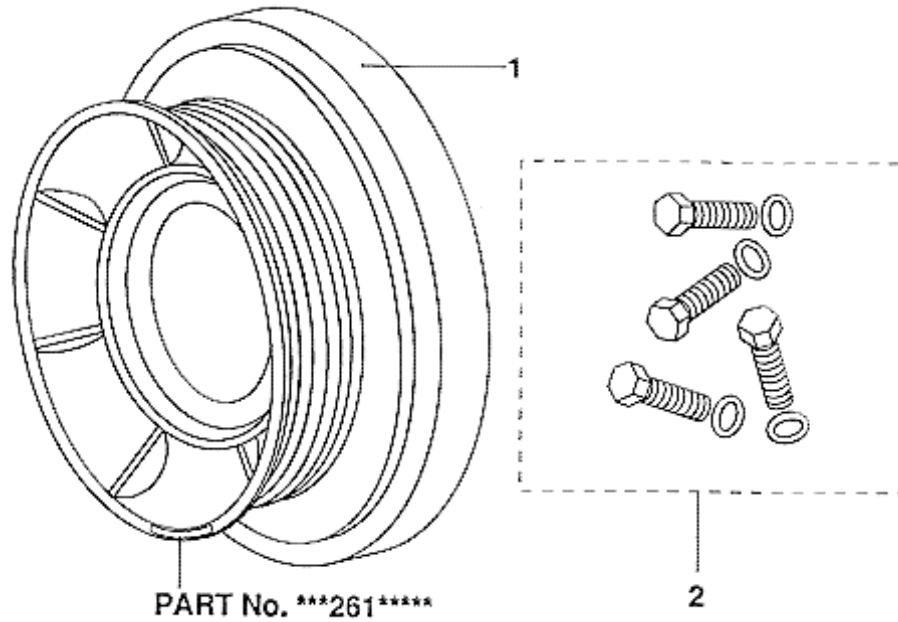
VINTAGE L01 L02					
REF No.	PART or ML	DESCRIPTION			
1	LO416G1	Lining, Brake <table border="1" style="display: inline-table; vertical-align: middle;"><tr><td>ORDER</td></tr><tr><td> </td></tr><tr><td> </td></tr></table> 2 Per Machine	ORDER		
ORDER					
2	145C4	Rivets, Brake Lining <table border="1" style="display: inline-table; vertical-align: middle;"><tr><td>ORDER</td></tr><tr><td> </td></tr><tr><td> </td></tr></table> 8 Per Machine	ORDER		
ORDER					
3	LOA400Y2	Core, Magnet			
4	LX222J500	Coil Magnet Taped			
5	LO136E1	Tube Magnet Core			
6	LOA400AA1	Magnet Core			
7	209A2	Bearing Needle			
8	LO94D1	Spring Disc <table border="1" style="display: inline-table; vertical-align: middle;"><tr><td>ORDER</td></tr><tr><td> </td></tr><tr><td> </td></tr></table> Number Required	ORDER		
ORDER					
9	LX177AP500	Switch			



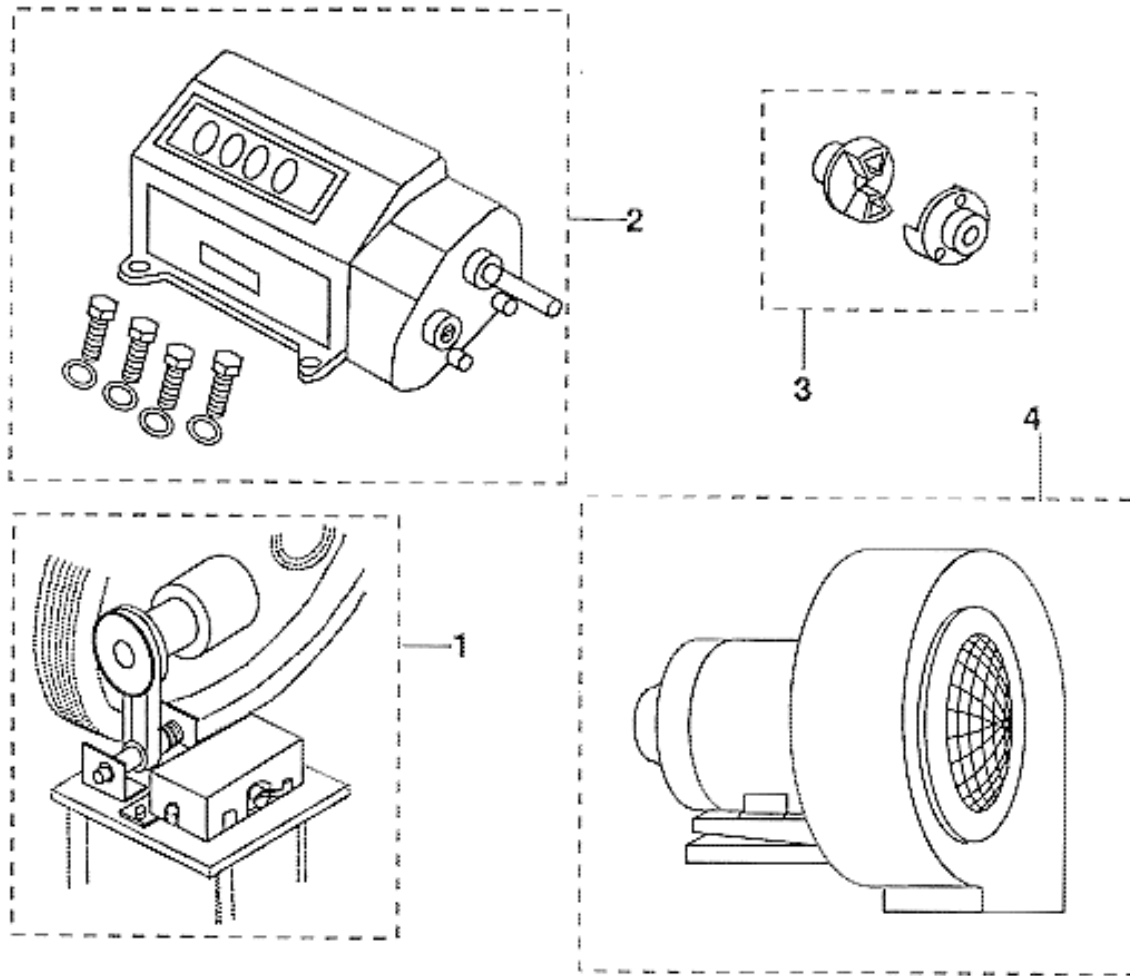
**Instruction For Replacement Of Sheave And/Or Roller Bearing.**

Grease to be packed by hand between all rollers and between cage and races at assembly. After assembly, remove one pipe plug from sheave and add 3 lb (1.36Kg) of grease via grease nipple supplied.

VINTAGE L01 L02		
REF No	PART or M.L.	DESCRIPTION
1	LO2000FA239	Secondary Sheave + Pipe Plugs
2	209B27	Roller Bearing
3	LO2000FA243	Oil Seal + Shims
4	LO2000FA242	Bearings + Ring + Locknuts + Lockwasher + Oil Seals + Shims
5	LO2000FA244	Grease (2.27 Kg. Can) Otis Spec No. 13 (Mobil Armvac No. 781) + Grease Nipple



VINTAGE L01		L02	DESCRIPTION		
REF No.	PART OR ML		NUMBER OF GROOVES	↑ GROOVE U/CUT	BRAKE TYPE
	With	Without			
1	LX261J504	---	12	30°	Standard Brake
	---	LX261J1	12	30°	
	LX261J506	---	12	45°	
	---	LX261J505	12	45°	
	LX261J500	---	10	30°	
	---	LX261J501	10	30°	
	LX261J502	---	8	30°	
	---	LX261J507	10	45°	
	---	LX261J503	8	30°	
	LO261A2	---	12	45°	Compact Brake
---	LO261A1	12	45°		
2	LO2000FA341		Hardware		



VINTAGE L01		L02	DESCRIPTION	
REF No.	PART or ML			
1	---	SPL 06-LY7119AB	Primary Velocity Transducer	
2	LO2000FA231		Mileage Recorder + Hardware for fastening	
3	LO2000FA232		Coupling + Hardware for fastening	
4	LO6091W1		Fan	380 / 440 Volts 50 Cycles
	LO6091W2		Unit	380 / 440 Volts 60 Cycles
	LO6091W3			208 Volts 60 Cycles