

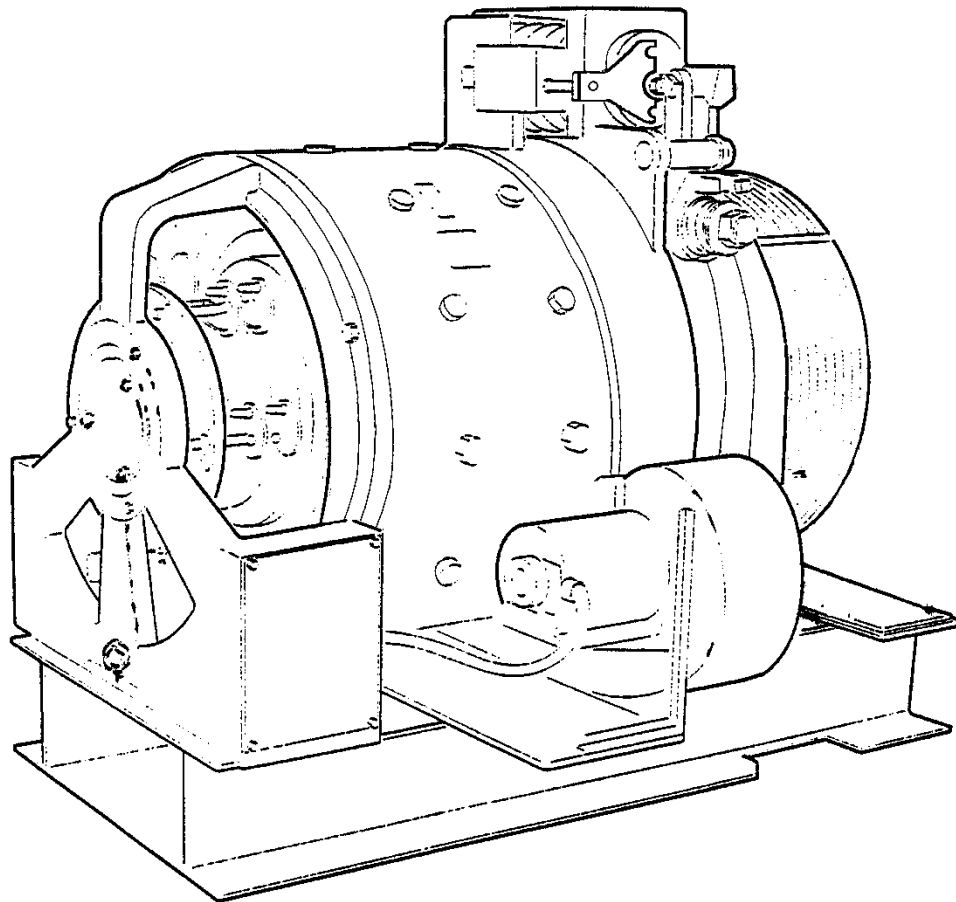
**139HT Machine
(Yonkers Manufacture)**

Spare Parts Leaflet

06-7146B

June 21, 2023 / Page 1 of 15

**W/O
VINTAGE**



OTIS

This document does not contain any
technical data subject to EAR or ITAR

**SERVICE ENGINEERING
Otis Elevator Company
Bloomfield, Connecticut USA**

Unpublished Work—© Otis Elevator Co.; 2023

Leaflet Description

This leaflet provides spare parts information for Yonkers Manufacture 139HT machine without vintage. To order spare parts for machines manufactured by United Kingdom, see SPL 06-LY7146B. For identification purposes, United Kingdom machines have a serial number/component code identity tag (see Figure 1) attached to the brake frame and a data plate, GO102JN1 (see Figure 2) attached to the field frame. Yonkers plant manufactured machines have a data plate, p/n 102GH1 (see Figure 3) attached to the field frame. The 139HT gearless machine was manufactured in four different locations. Check vintage data plate on the machine to identify the location origin.

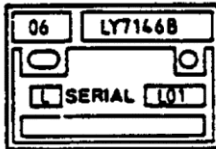


Figure 1

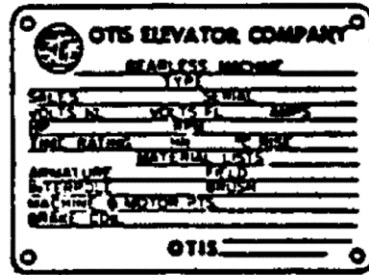


Figure 3

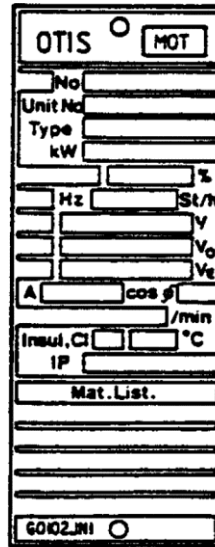


Figure 2

Leaflet Revisions

Date Revised	Subject Matter Expert	Reason for Revision
May 1986	- - -	New leaflet
May 22, 2006	Val Sheynkman	Updated illustrations and parts throughout
July 11, 2007	Val Sheynkman	Updated illustrations and parts
June 19, 2013	Val Sheynkman	Updated p. 15
August 12, 2015	Gary Mendrala	Updated liner part number on p 11.
May 3, 2017	Gary Mendrala	Added p/n A95BF2 Rod
October 10, 2018	Gary Mendrala	Updated brake switch kit information
March 18, 2020	Gary Mendrala	Added p/n 177CA5 on p. 12
May 19, 2021	Gary Mendrala	Added vintage tag information; Updated sheave descriptions
March 23, 2022	Gary Mendrala	Added p/n 72CB1 on p. 8
June 21, 2023	Gary Mendrala	Added p/n AAA251BT5 on p. 11

Related Drawings

Drawing No.	Title	Drawing No.	Title
AAA20016D	Auxiliary Brake	7146B	139HT Gearless Machine

Related Documents

Document ID	Title
TIP 6.1.0-19	Gearless Machine Commutator Guard Installation
TIP 6.1.1-14	Installation Procedure for Full Cover Sheave Guard (w/Carpet Wiper) for 130HT, 131HT, & 139HT Machines
SPL 06-7119AB	Encoder, Speed on Machine Shaft Encoder
SPL 06-HT200750-1	Encoder, Speed on Machine Primary Velocity Elevonic 101
SPL 06-LY7146B	Machine, 139HT, Gearless, Liverpool Manufacture
SPL 06-ALY7146B	Machine, 139HT, Gearless, China Manufacture
SPL 06-AAA7146E	Machine, 139HT, Gearless, Bloomington Manufacture
TIP 6.1.1-18	Installation of Auxiliary Brake
TIP 6.0-1	Replacement of Brake Linings
TIP 6.0-16	Machine Brake Installation Kit

Subject Matter Expert

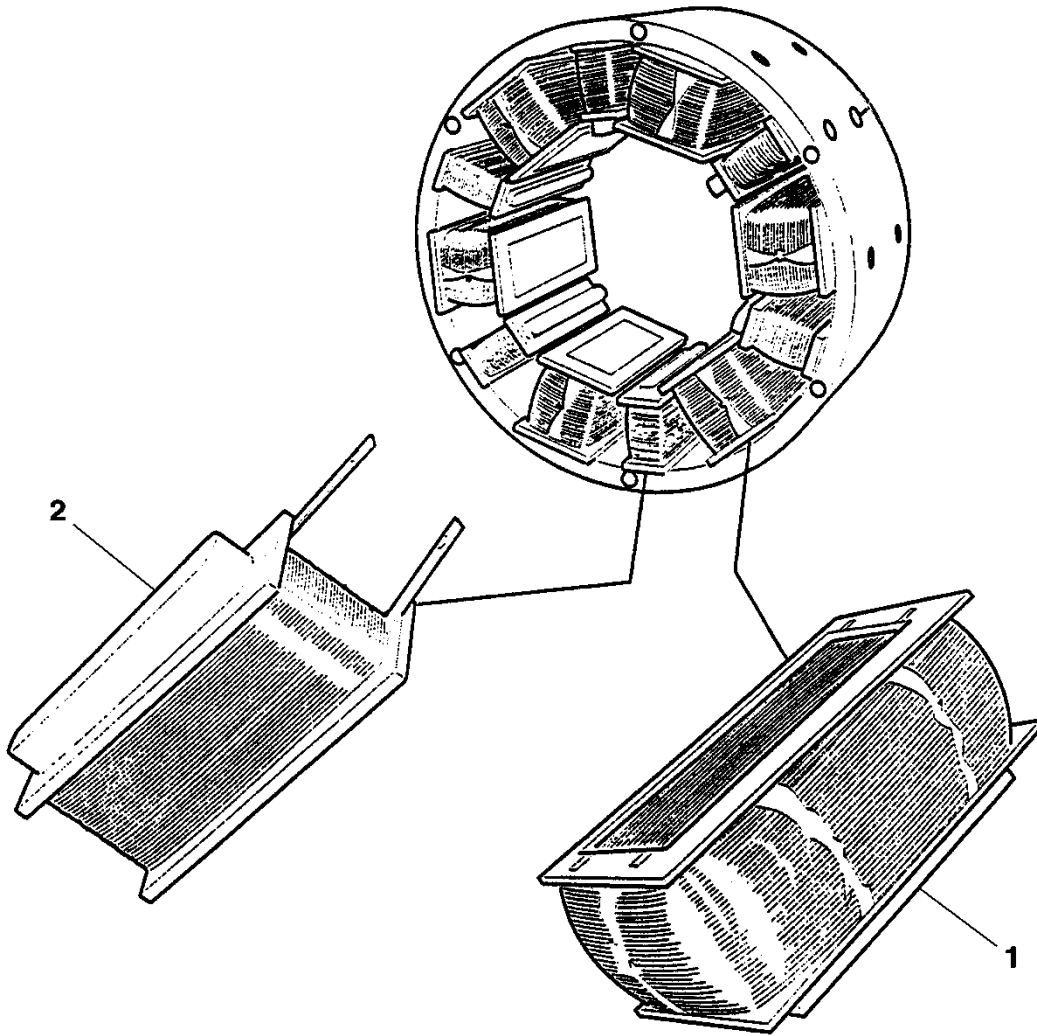
Name	Department
Gary Mendrala	OSC Service Engineering

About Spare Parts Leaflets...

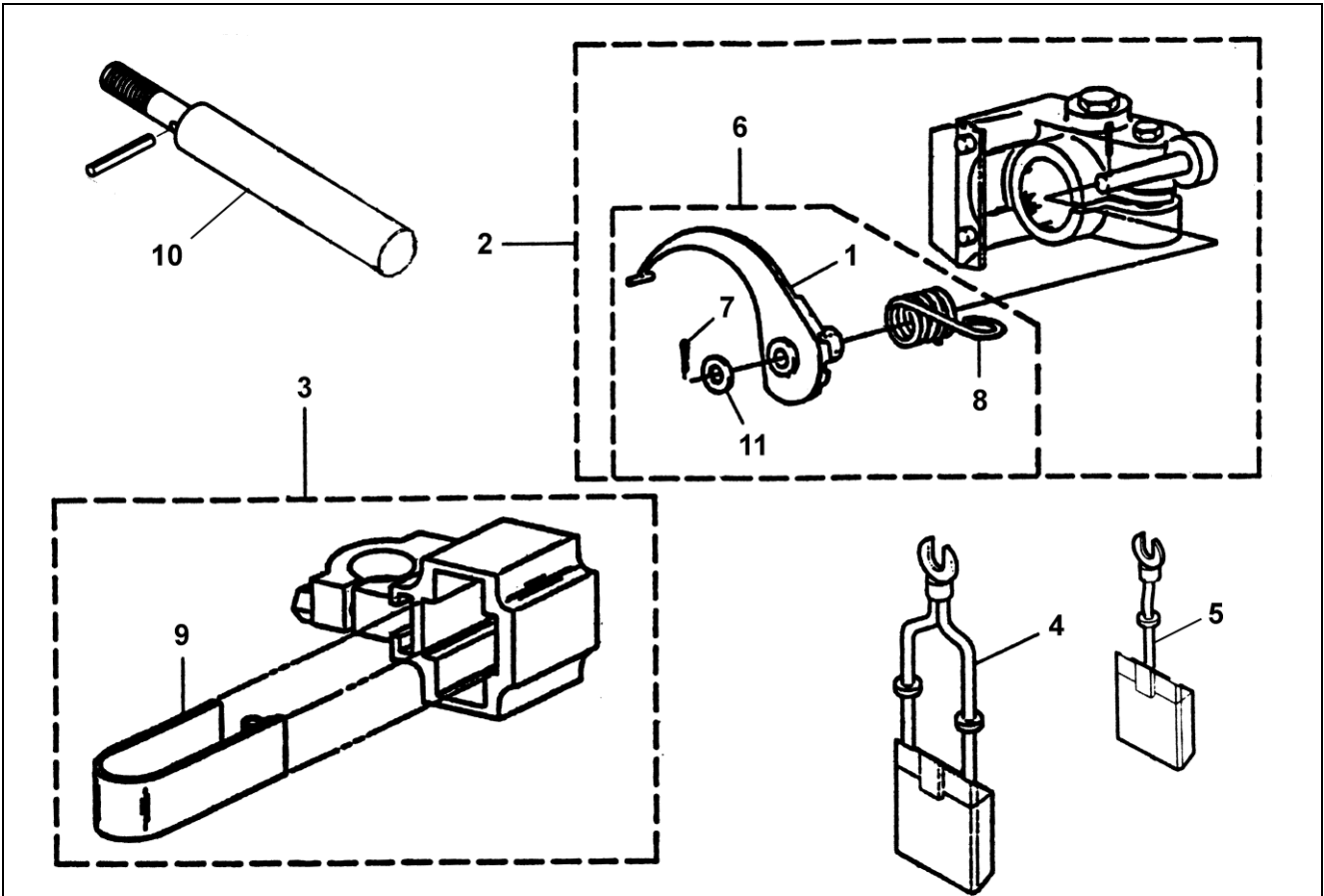
This document lists the lowest replaceable units (LRUs) for the standard version of the product. The LRUs are chosen by a team of Otis associates representing engineering and manufacturing.

While goal of this document is to make parts identification as easy as possible, the document cannot be all-inclusive. Elevator and escalator contracts classified as “special” or “custom” are not addressed here. For such contracts, please refer to specified information, the contract folder, TIPs, Field Education Articles, Construction Letters, etc. for further information.

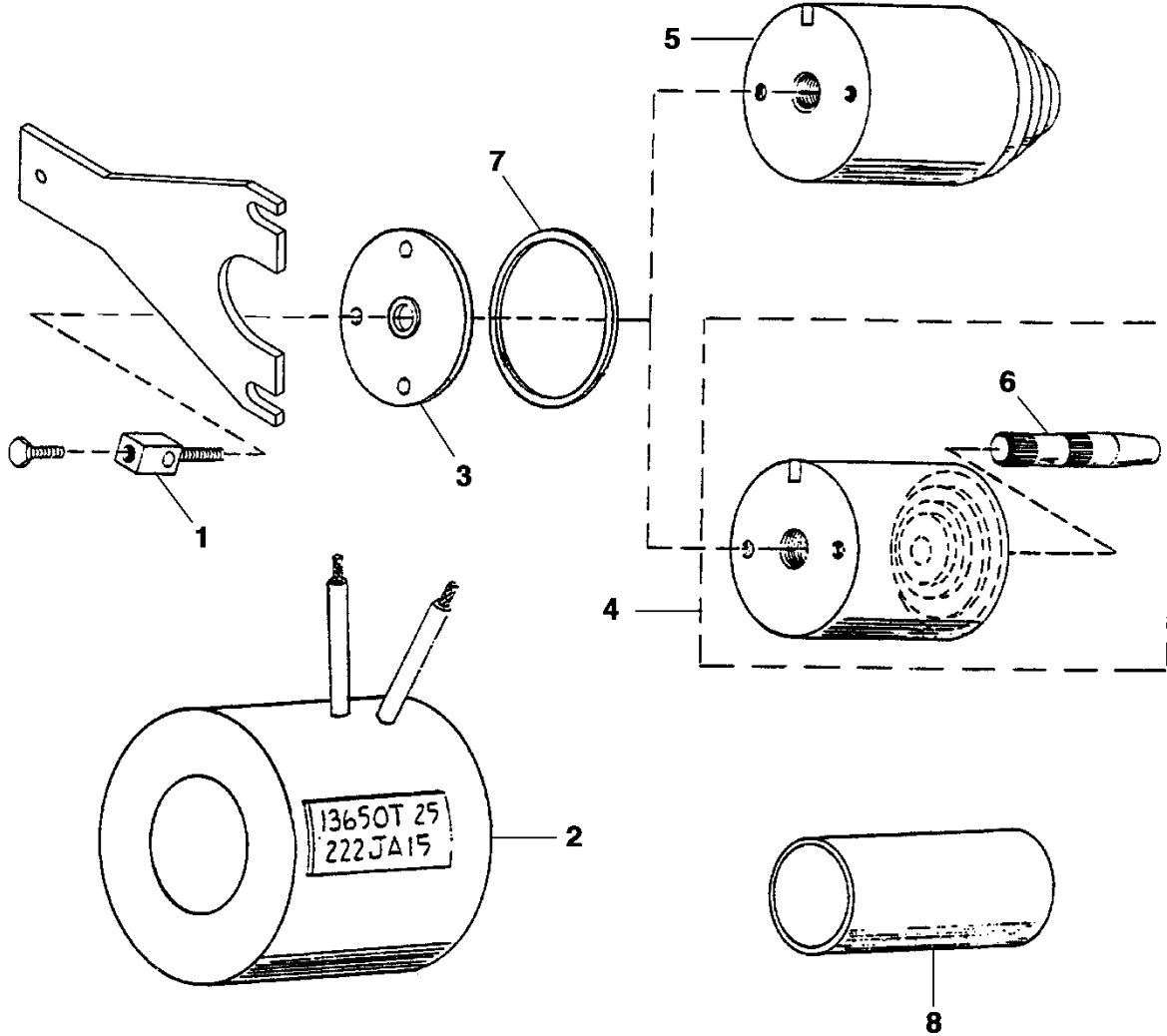
If you have any suggestions about this document, please contact the subject matter expert listed on this page.



		W/O VINTAGE			
REF. No.	PART No.	DESCRIPTION			
1	221DP4 LO5000E703	Coil, Field, <table border="1" style="display: inline-table; vertical-align: middle;"><tr><td>ORDER</td></tr><tr><td> </td></tr><tr><td> </td></tr></table> Set of Six	ORDER		
ORDER					
2	249AS4 2700ADD6 LO5000E704 2700ADD6	Coil, Interpole, <table border="1" style="display: inline-table; vertical-align: middle;"><tr><td>ORDER</td></tr><tr><td> </td></tr><tr><td> </td></tr></table> Set of Six, w/Hardware	ORDER		
ORDER					



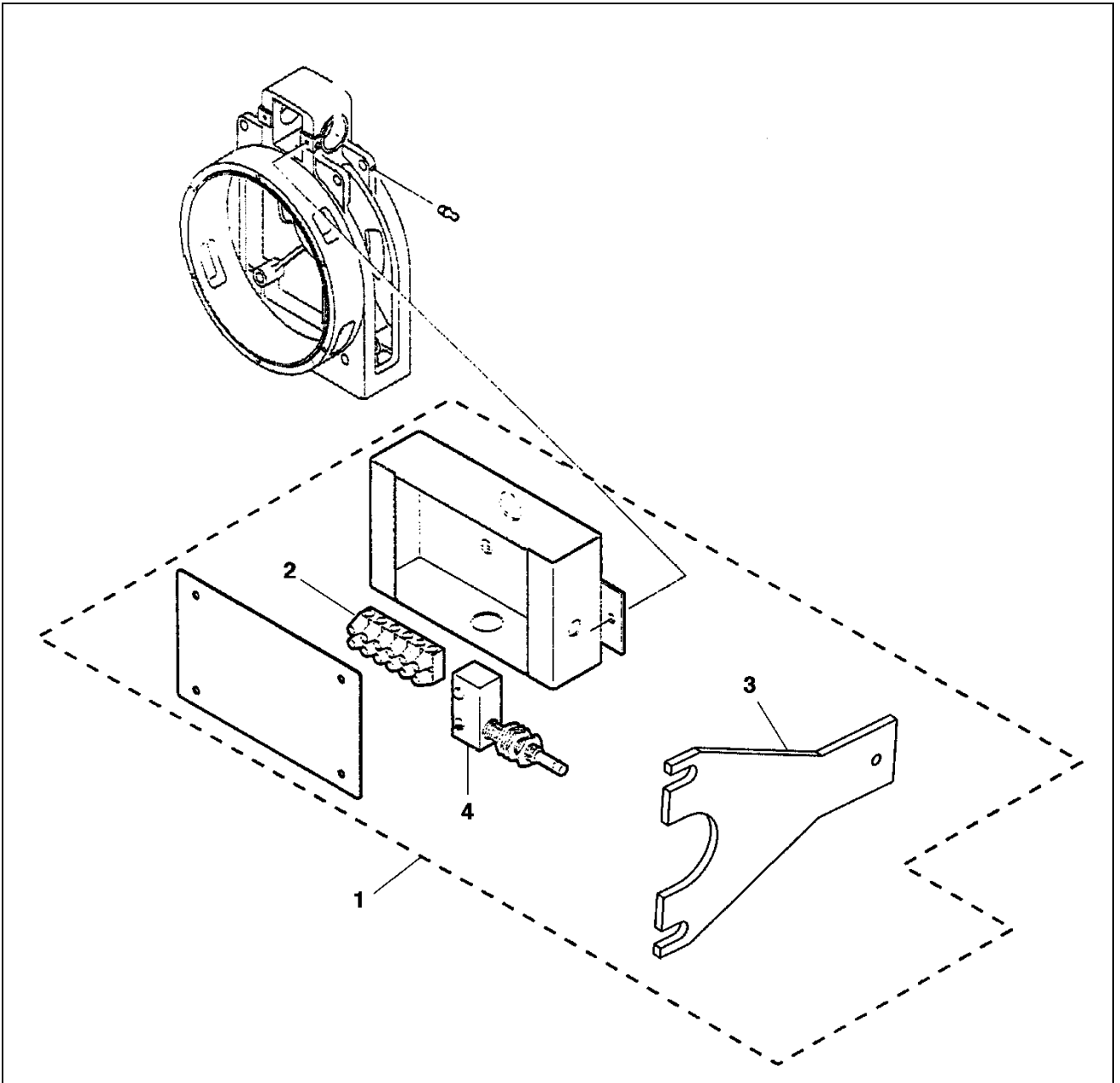
W/O VINTAGE		
REF. No.	PART No.	DESCRIPTION
1	288CD4	Arm, Spring
2	6134B5	Assembly, Brush Holder, ⌀ 0.875 in.
3	4-6134J4 6134J4	Assembly, Brush Holder, ⌀ 0.876 in.
4	4-240T8 240P7	Brush, Shunt-Double (W → Ref. 3)
5	240T7 240P3	Brush, Shunt-Single (W → Ref. 2)
6	AAA20200P200	Kit, Brush Arm
7	PIN-COT1/16x1/2	Pin, Cotter, 1/16x1/2
8	92A4	Spring, Torsion
9	93FC2	Spring, Constant Force
10	474R1	Stem, Brush
11	128AF12	Washer



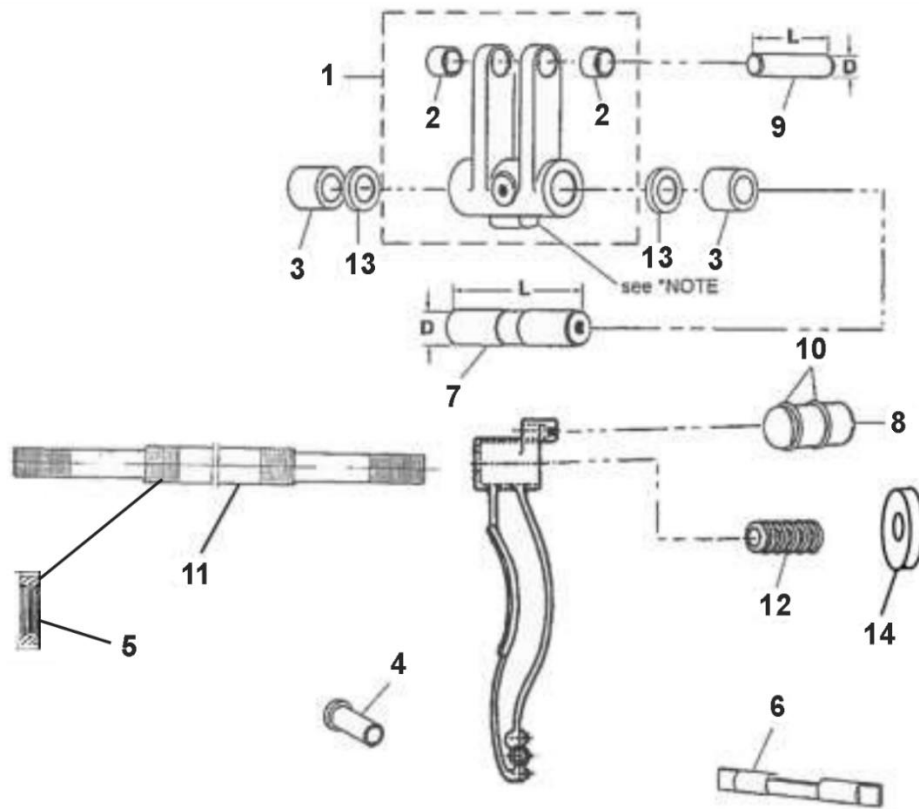
W/O VINTAGE		
REF. No.	PART No.	DESCRIPTION
1	65GA3	Bolt
2	222JA15	Coil
3	346AMA1	Cover
4	400DB4	Magnet Core, Female
5	400DD4	Magnet Core, Male
6	77RG2 AAA81MF2	Pin
7	128AG53	Shim
8	136R10	Tube

139HT Machine Brake Switch

06-7146B



W/O VINTAGE		
REF. No.	PART No.	DESCRIPTION
1	7013J1	Assembly, Brake Switch
2	303G2	Board, Terminal
3	288WE1	Lever, Brake Switch
4	177Y1	Switch, Brake

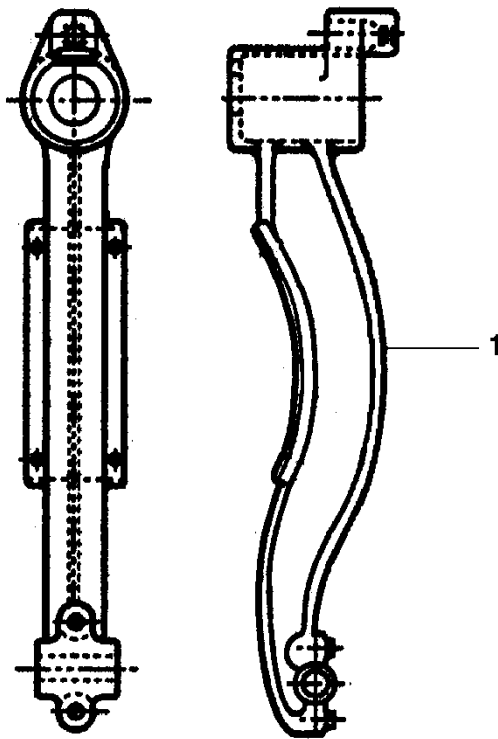


	W/O VINTAGE	
REF. No.	PART No.	DESCRIPTION
1	B288HX2 *AAA288AAG4	Assembly, Lever
2	209A6	Bearing, \varnothing 1.250 in.
3	209A7	Bearing, \varnothing 1.500 in. (in brake frame at upper pivot)
4	335H44 335H43	Bushing (in brake frame at lower pivot)
5	72CB1	Nut, Spanner
6	77TL2	Pin, Eccentric
7	77LG3	Pin, L = 6.38 in., \varnothing D = 1.25 in.
8	81BN2	Pin (two O-rings, ref. 9 are included)
9	82R4	Pin, L = 3.44 in., \varnothing D = 0.873 in.
10	172JK1	Ring, O, ID = 0.921 in., OD = 1.19 in.
11	A95BF2	Rod, Length 32.5 in.
12	90JD11	Spring
13	128AL2	Washer, Bronze
14	133AD2	Washer

* **NOTE:** p/n AAA288AAG4 lever has the pressed-in heat treated load bearing plug.

139HT Machine Brake Arm and Lining Assembly

06-7146B

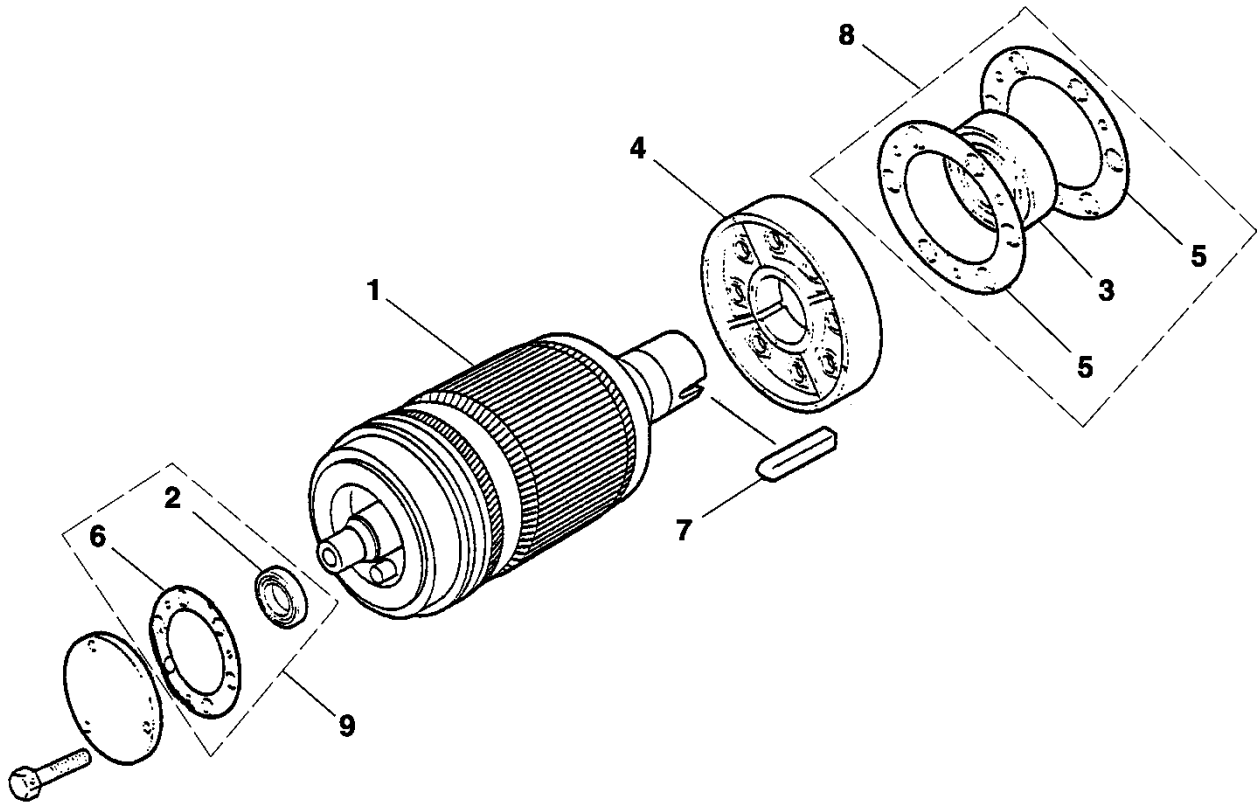


	W/O VINTAGE	
REF. No.	PART No.	DESCRIPTION
1*	A286Y2	Arm, Brake

* For details see TIP 6.0-1, *Replacement of Brake Linings*.

NOTE: All gearless machines must use brake arms that are lined with Green Gripper lining, supplied factory-bonded by OSC for US offices.

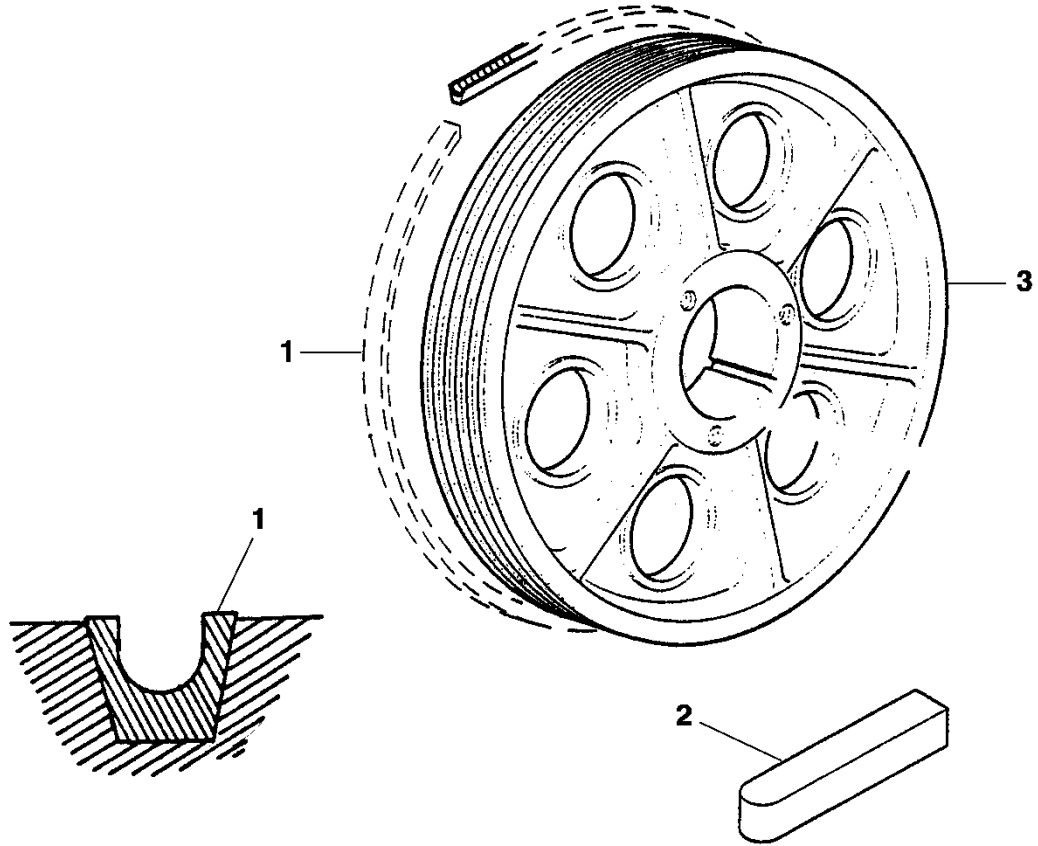
OSC makes every attempt of reworking same brake arms.



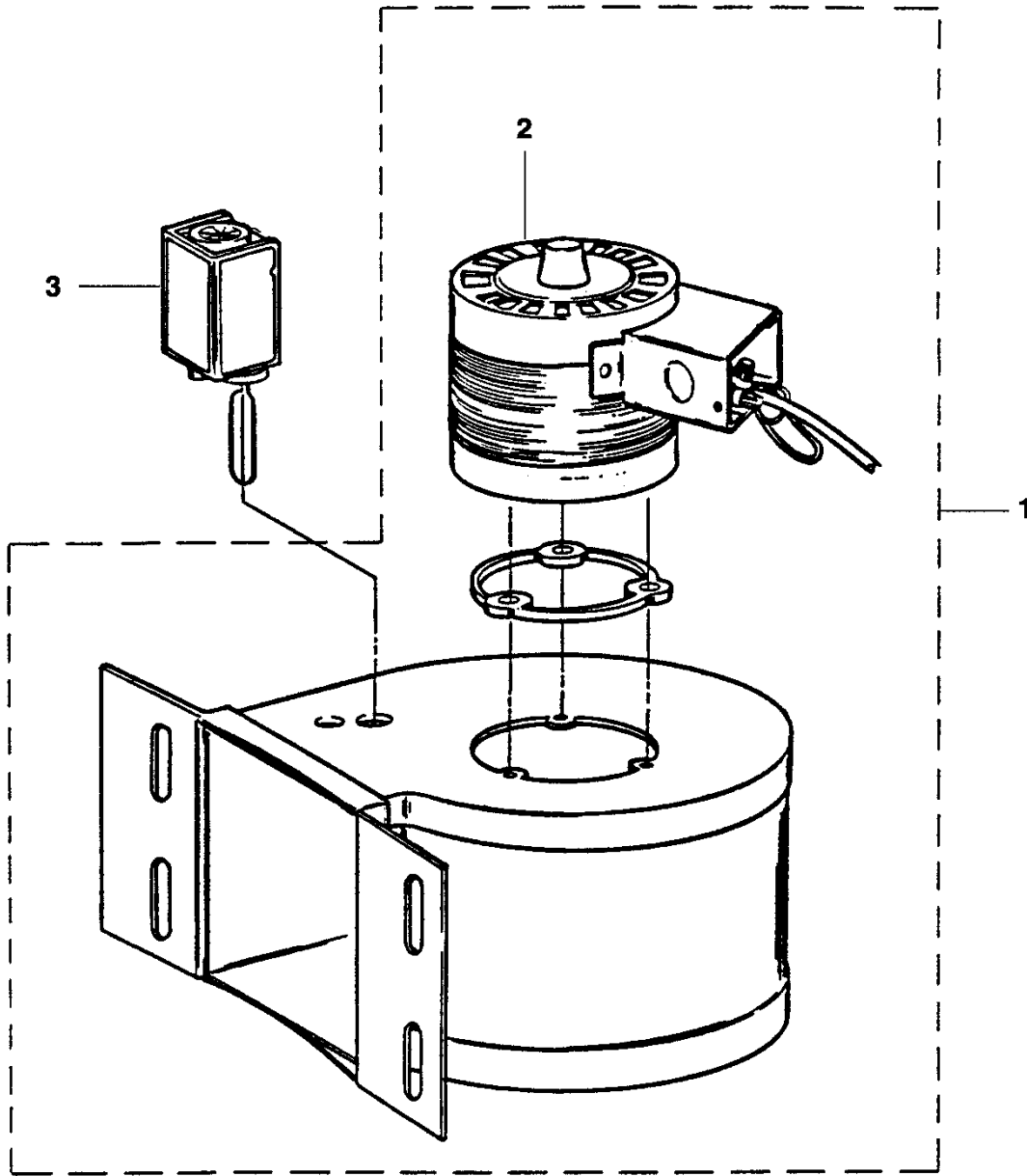
W/O VINTAGE		
REF. No.	PART No.	DESCRIPTION
1	2063K1 LO5000E433	Assembly, Armature (contact spare lending)
2	207Z73	Bearing, Ball
3	209G14	Bearing, Roller
4	498Y2 AAA198AAA2	Brake, Pulley
5	376T16 AAA376FT3	Gasket, Brake End
6	A376CB2 LO376BV1	Gasket, Commutator End
7	192G107	Key, 0.75 x 0.75 x 3.0 in.
8	LO5000E431	Kit, Bearing and Gaskets
9	LO5000E432	Kit, Bearing and Gaskets

139HT Machine Drive Sheave

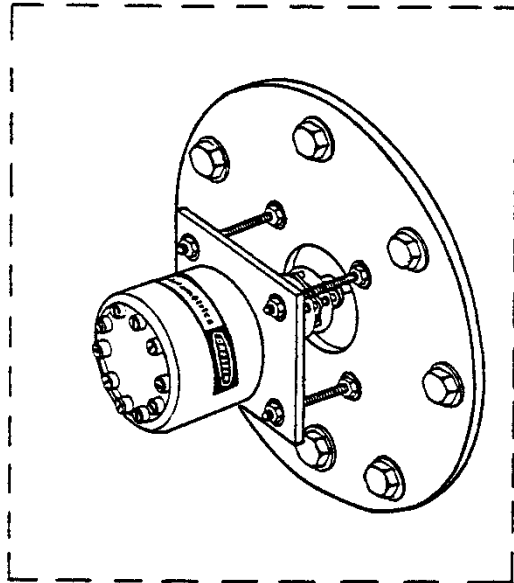
06-7146B



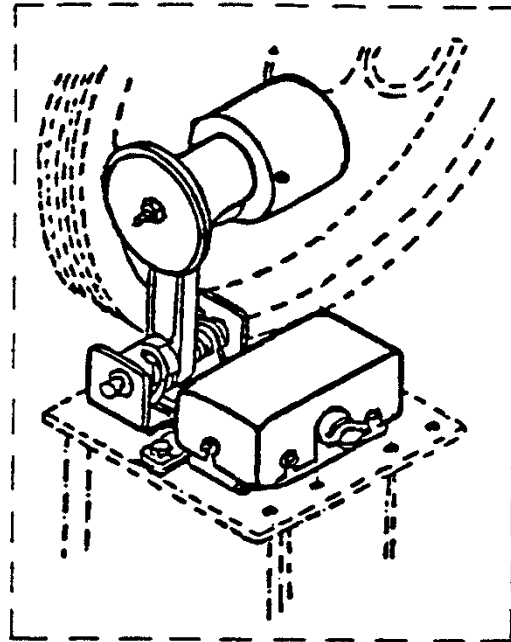
	W/O VINTAGE	
REF. No.	PART No.	DESCRIPTION
1	251BT13 AAA251BT5 B251BT13 AAA251BT5	Insert, Polyurethane, 1/2 in. Rope, 24 in. Diameter Joined Liner
2	192D37	Key
3	260BY1	Sheave, Drive, 24 in., 7 Ropes, 1/2 in. Dia., No Flanges





W/O VINTAGE		
REF. No.	PART No.	DESCRIPTION
1	6091BA1 6091BA2	Assembly, Blower
2	6333DH1	Motor
3	177CA1 177CA3 177CA5	Switch, Air Flow



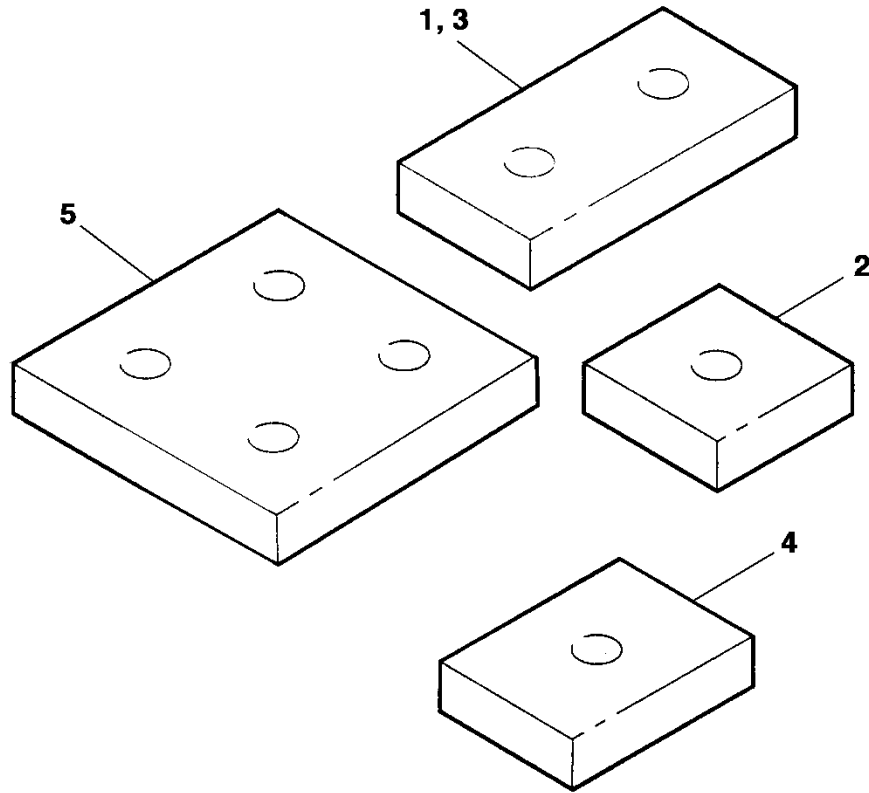
1



2

W/O VINTAGE		
REF. No.	PART No.	DESCRIPTION
1	---	Encoder, Shaft, Type 7119AB,  SPL 06-7119AB
2	HT200750-1	PVT Unit,  SPL 06-HT200750-1

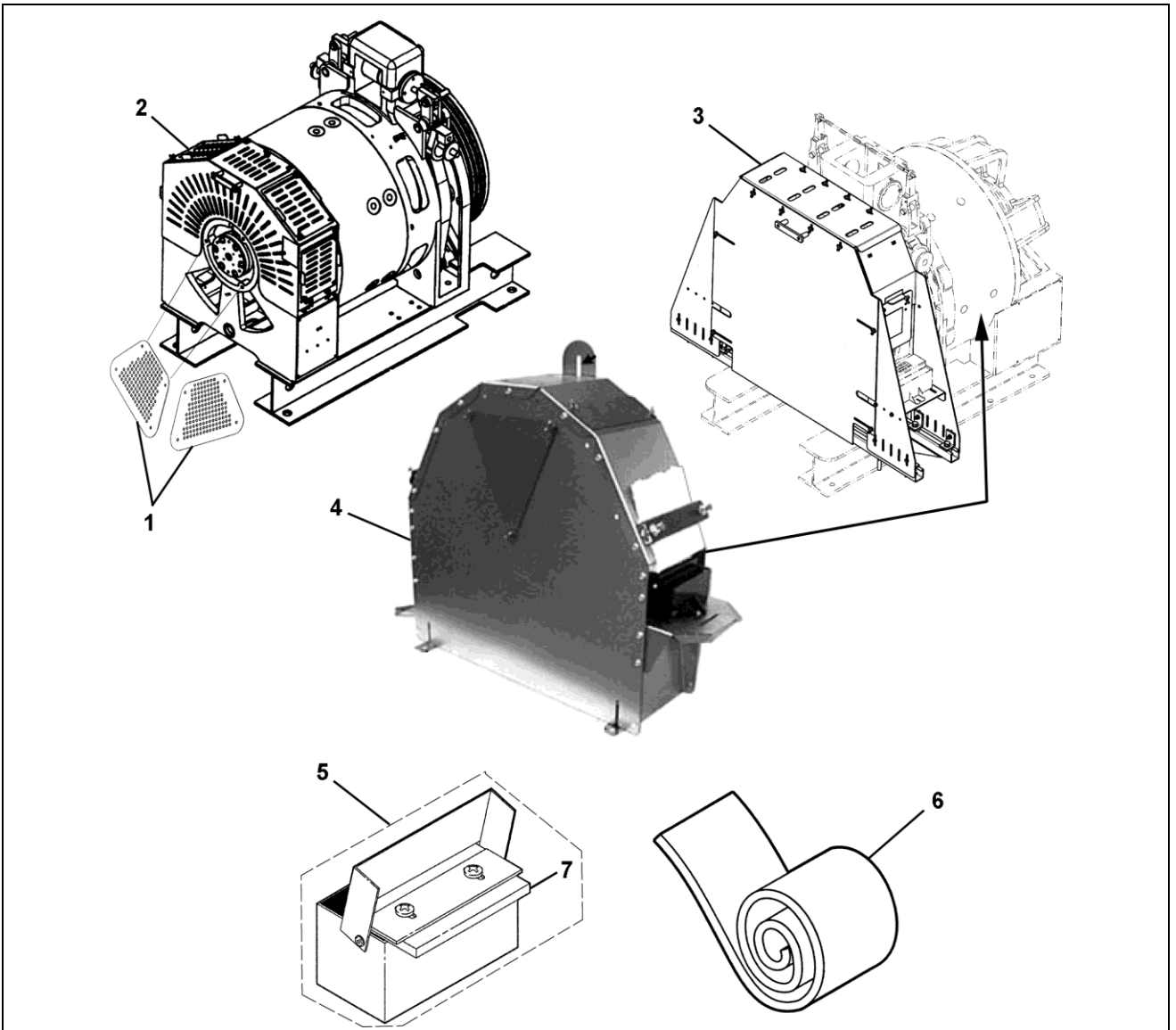
Sound Isolation Pads



	W/O VINTAGE	
REF. No.	PART No.	DESCRIPTION
1	310BE2	Pad, Rubber, 6 x 3 w/Two Holes, Hole $\varnothing = 1$ in.
2	310BE3	Pad, Rubber, 3 x 3 w/One Hole, Hole $\varnothing = 1$ in.
3	310JJ1	Pad, Polyurethane (Yellow), 6 x 3, w/Two Holes, Hole $\varnothing = 1$ in.
4	310JJ3	Pad, Polyurethane (Yellow), 6 x 3, w/One Hole, Hole $\varnothing = 1$ in.
5	310BE1	Pad, Rubber, 6 x 6, w/Four Holes, Hole $\varnothing = 1$ in.

Sheave and Commutator End Guards for 139HT Machine

06-7146B



	W/O VINTAGE	
REF. No.	PART No.	DESCRIPTION
1	---	Guard, Additional Motor, TIP 6.1.1-19
2	---	Guard, Commutator End, TIP 6.1.0-19
3	---	Guard, Sheave, TIP 6.1.1-14
4	---	Guard, Sheave for Canada, TIP 6.1.1-17
5	AAA508AH3	Lubricator
6	AAA297AY4	Strip, Carpet
7	AAA488M5	Felt, Wick