

306DT MACHINE

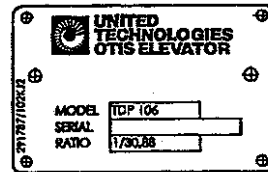
Spare Parts Leaflet

06-7575AR

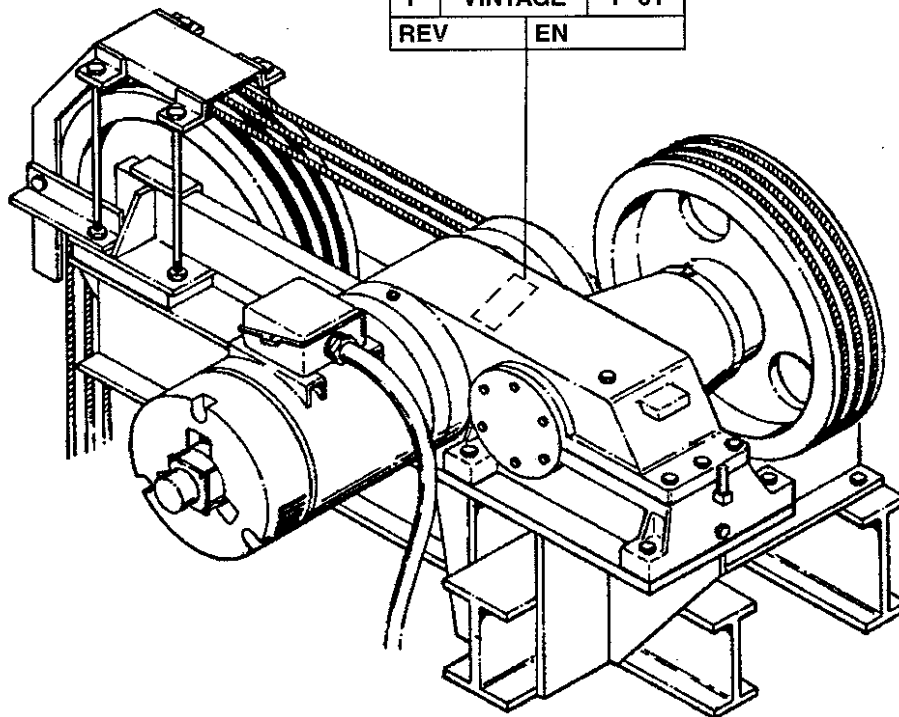
September 11, 2024 / Page 1 of 12

OBSOLESCENCE NOTICE

The product listed in this SPL is obsolete. Some components may still be available, but Otis recommends an upgrade (see TIP 32.2-1 for potential upgrade).



06	7575AR	
Y	VINTAGE	Y 01
REV	EN	



Unpublished Work—© Otis Elevator Co.; 2024

OTIS

Safety First!

SERVICE ENGINEERING

Otis Elevator Company

Bloomfield, Connecticut USA

Leaflet Description

This SPL is intended to supply all necessary ordering data for the 306DT (a.k.a. Leroy-Somers Model TDP 106) helical geared machine. The 306DT was used on MRVF applications from early 1984 to approximately 1986 when the 315DT machine was introduced. The initial 100 gearboxes were shipped with a **“short” output/ sheave shaft** (635 mm [25 in.]). These shafts have a taper length (shaft end to full diameter) of 154 mm (6.06 in.). The sheave rim clears the bedplate by approximately 10 mm (.38 in.). “Short” shaft machines use 1F-260CL type drive sheaves (see page 9).

The balance of the units were equipped with a **“long” output/ sheave shaft** (648 mm [25.5 in.]). These shafts have a taper length (shaft end to full diameter) of 123 mm (4.85 in.). The sheave rim clears the bedplate by approximately 25 mm (1.0 in.). “Long” shaft machines use 260CL type drive sheaves (see page 9).

Unlike worm gear machines, the 306DT utilizes a **helical gear arrangement** for speed reduction similar to the 215DT and 315DT machines. The gear reduction unit consists of an input/motor shaft, an intermediate shaft, and an output/drive sheave shaft. The input shaft of the gearbox is assembled with the motor shaft and runs through the gearbox to a disk brake on the sheave side of the machine.

If repairs to any gear are required, OSC supplies a complete rebuild kit (see page 6). Motors can be rewound through the OSC Spare Lending department. In contrast to the 315DT machine, the motor and output shaft are supplied as a one-piece factory assembly.

Leaflet Revisions

Date Revised	Subject Matter Expert	Reason for Revision
September 1986	Jeff Costley (Technical Writer)	New SPL
April 1998	Rob Choquette	Update parts, leaflet layout, and history page.
February 3, 2010	Jesse Richter	p. 4 correct reference to encoder document.
March 23, 2011	Tom Charney	Updates parts and illustrations.
September 11, 2024	Juan Murillo	Added Obsolescence Notice on page 1.

Related Drawings

Drawing No.	Title
7575AR	306DT Machine Assembly and Arrangement

Related Documents

Document ID	Title
TIP 6.2.8-1	306DT Machines for MRVF
TIP 6.2.8-2	Must Change for All 306 Machines Shipped to Date
TIP 6.2.8-3	Gearbox Lubricant, 306DTk, 215DT & 215EEC Machines
TIP 6.2.8-4	Adjustment for 306DT Machine Brake
TIP 6.2.8-5	306DT Machine Rework Instructions
OMM 6.2.2	Geared Machines
SWP 6.0-A	Machines & Brakes

Continued on Next Page

History

06-7575AR

Subject Matter Expert

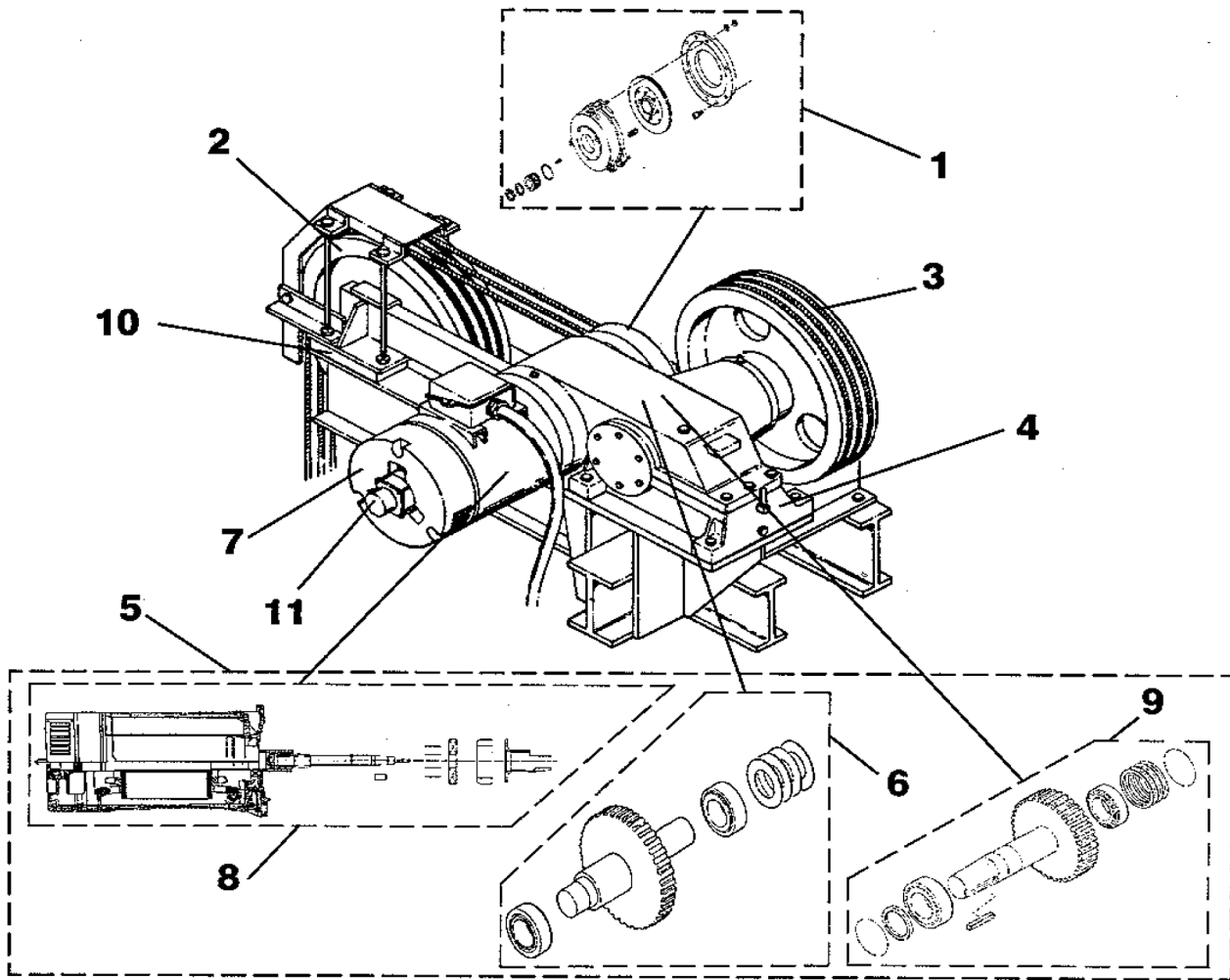
Name	Department
Tom Charney	OSC Service Engineering

About Spare Parts Leaflets...

This document lists the lowest replaceable units (LRUs) for the standard version of the product. The LRUs are chosen by a team of Otis associates representing engineering and manufacturing.

While goal of this document is to make parts identification as easy as possible, the document cannot be all-inclusive. Elevator and escalator contracts classified as “special” or “custom” are not addressed here. For such contracts, please refer to specified information, the contract folder, TIPs, Field Education Articles, Construction Letters, etc. for further information.

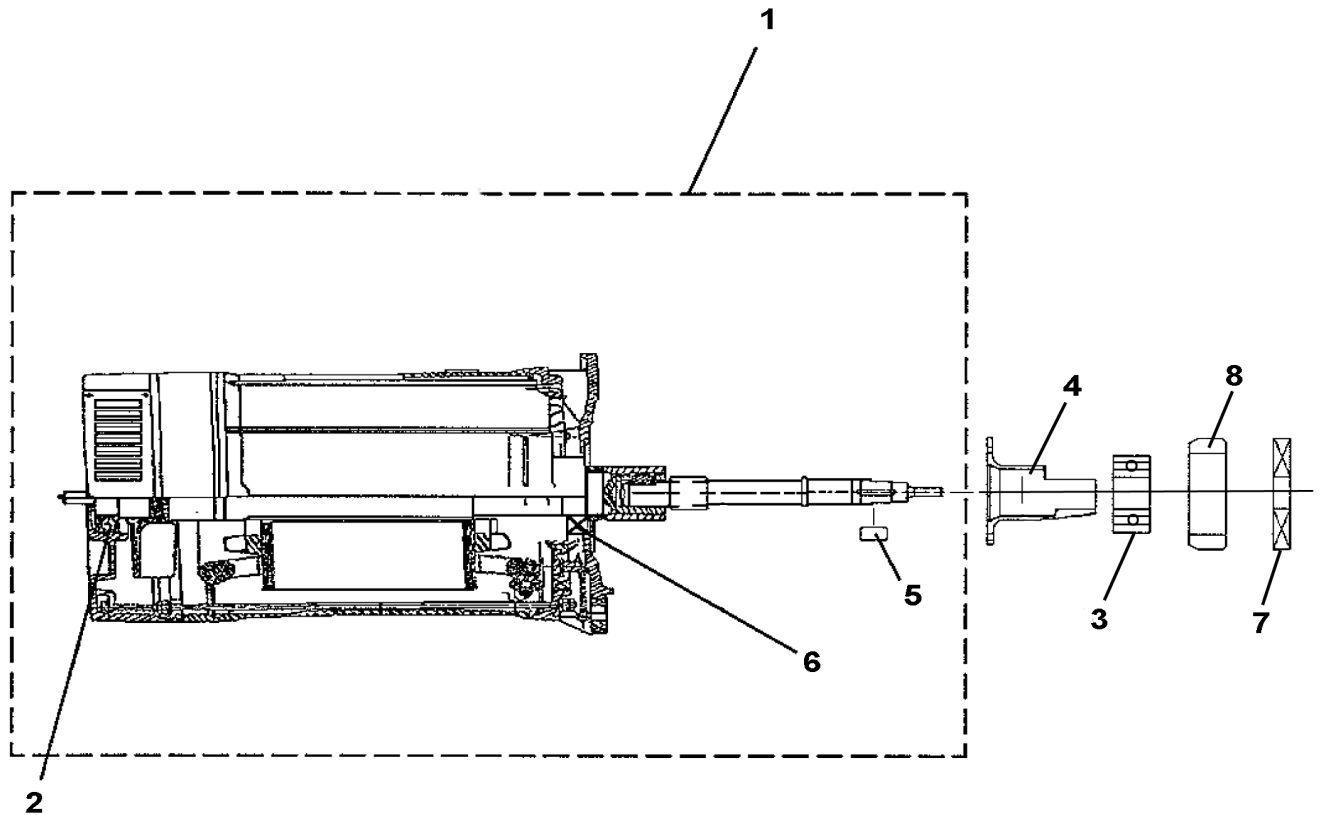
If you have any suggestions about this document, please contact the subject matter expert listed on this page.



VINTAGE Y 01		
REF. NO.	PART or ML	DESCRIPTION
1	👁 Page 9	Brake Parts
2	👁 Page 11	Deflector Sheave Parts
3	👁 Page 10	Drive Sheave Parts
4	👁 Page 6	Gearbox/Gearcase
5	👁 Page 7	Helical Gear Sets
6	👁 Page 8	Intermediate Shaft Parts
7	👁 Page 5	Motor
8	👁 Page 5	Motor/Input Shaft Assembly Parts
9	👁 Page 8	Output/Sheave Shaft Parts
10	👁 Page 12	Sound Isolation Equipment
11	----	Encoders, See SPL 06-AAA07575AAA

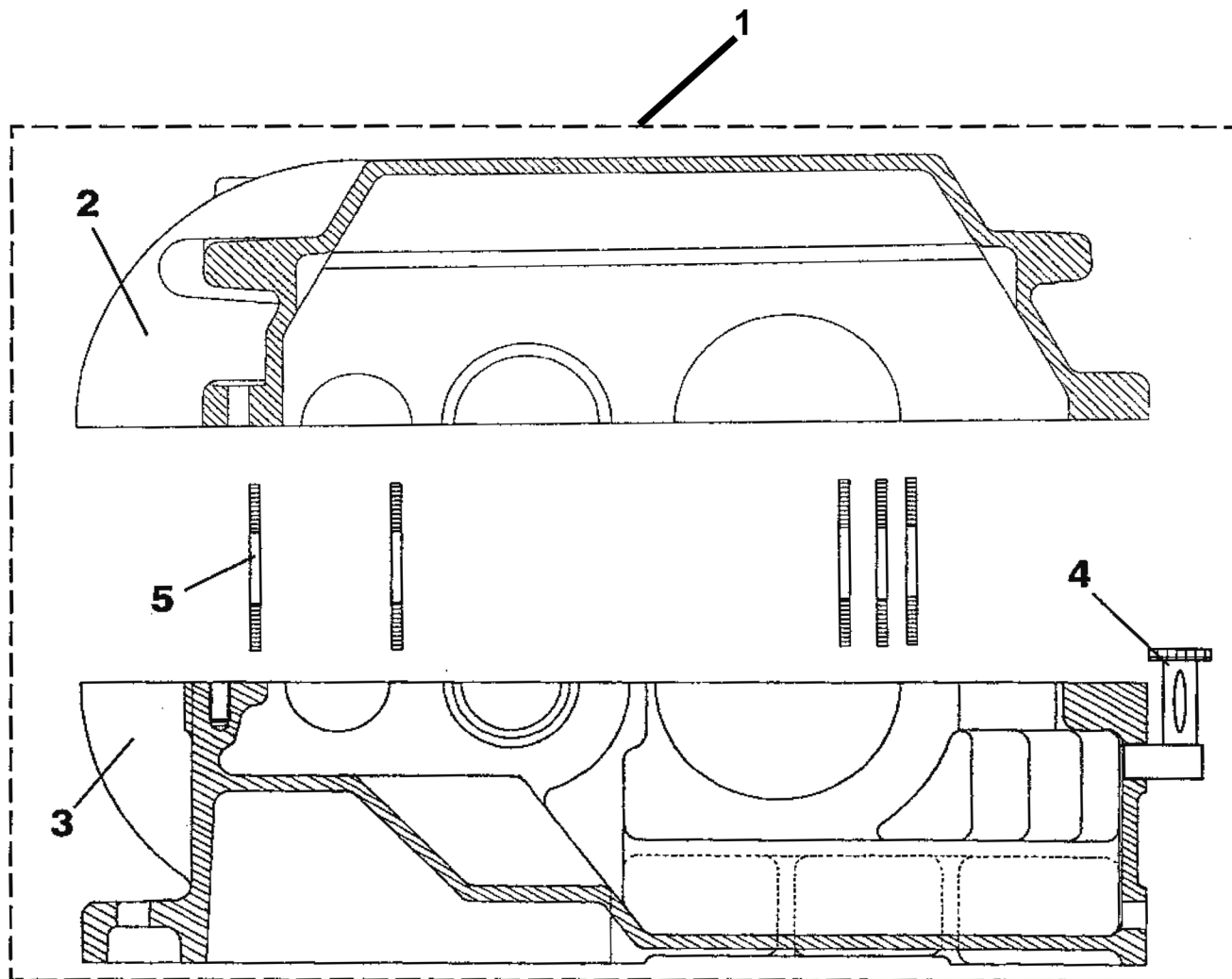
Motor/Input Shaft Assembly

06-7575AR



NOTE: New motors are no longer available for this application. To rewind the existing motor, contact OSC Customer Service (800) 600-6847 or Spare Lending.

VINTAGE Y 01		
REF. NO.	PART or ML	DESCRIPTION
1	AAA6333EY2	Assembly, Motor/Input Shaft, NOTE
2	207Z83	Bearing
3	7575AR/22206 209G27	Bearing, Input Shaft
4	AAA396NN1	Housing, Retainer Cover
5	---	Key, p. 9, ref. 4
6	2700ADD4	Kit, Motor Bearing Oil Seal
7	7575AR/45x62x8 AAA33AS4	Seal, Oil
8	AAA465CQ1	Sleeve

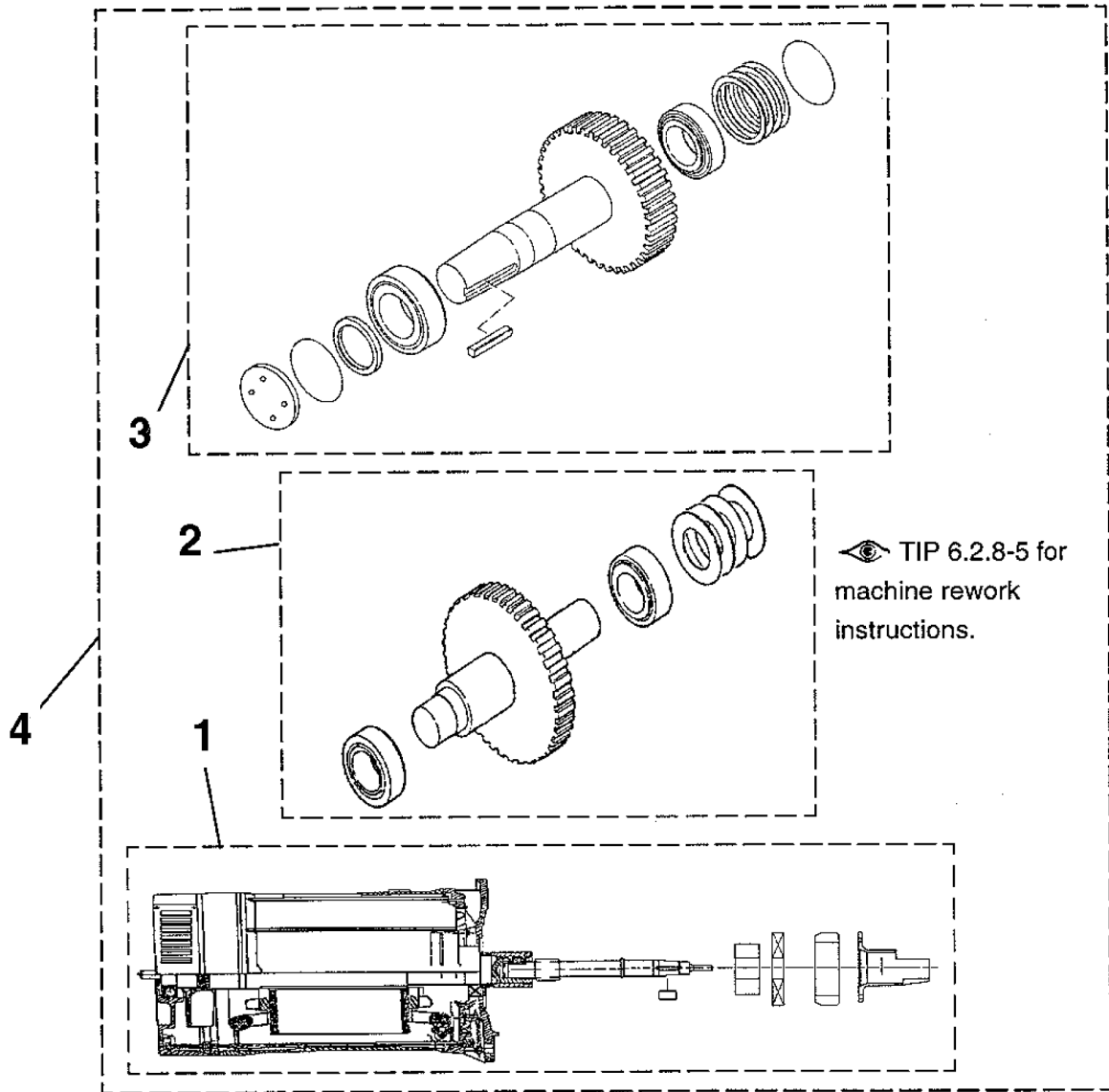


Note: Gearcases are not available as spare parts. Part numbers are for reference only.

VINTAGE Y 01		
REF. NO.	PART or ML	DESCRIPTION
1	AAA330GY2	Gearcase, Complete NOTE
2	AAA330GZ1	Gearcase, Upper NOTE
3	AAA330GY1	Gearcase, Lower NOTE
4	7575AR/OL25GH60	Gauge, Oil, 1/4 NPT
5	AAA98HQ1	Stud, 5.12 in. (130 mm long)
	AAA98HQ2	Stud, 2.56 in. (65 mm long)
	AAA98HQ3	Stud, 8.07 in. (205 mm long)
	AAA98HQ4	Stud, 7.28 in. (185 mm long)
	AAA98HQ5	Stud, 4.92 in. (125 mm long)

Helical Gear Sets

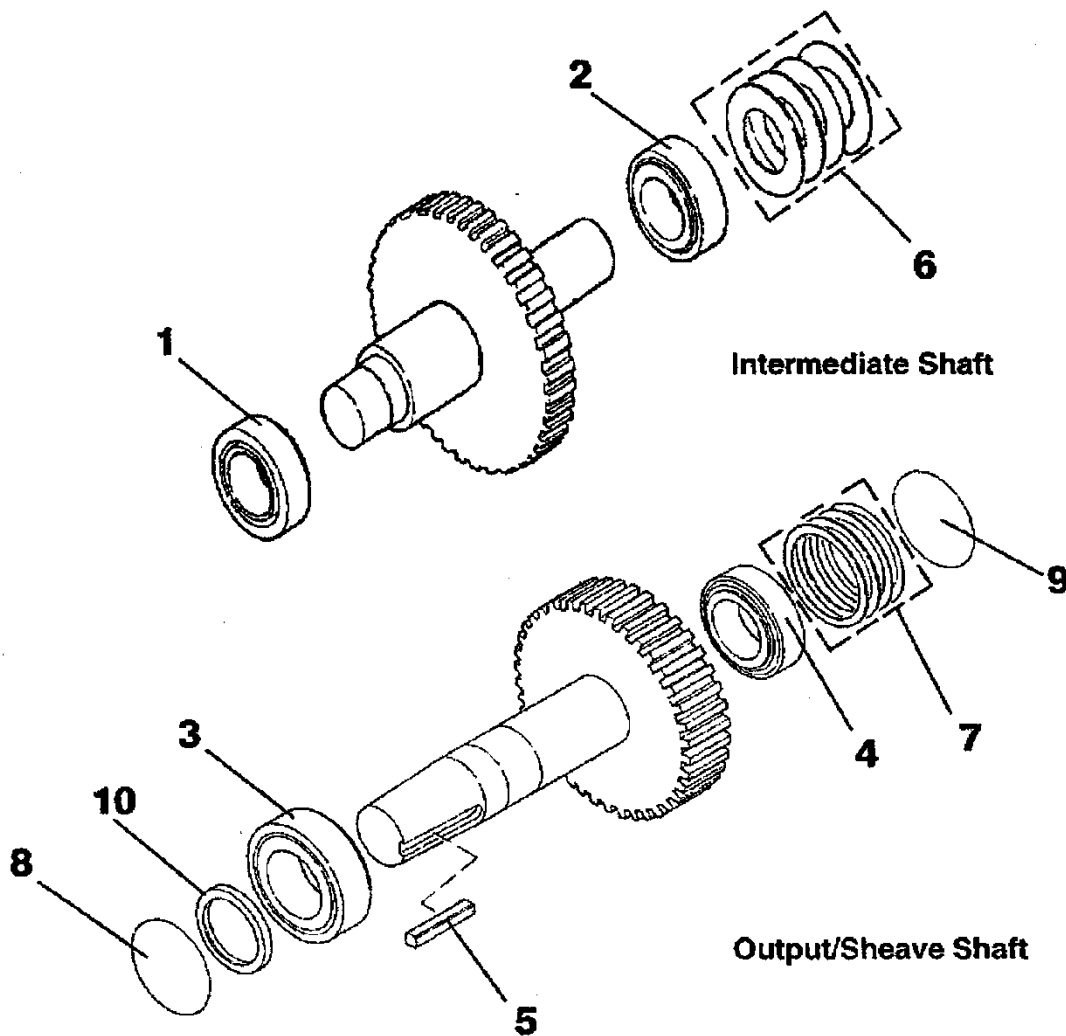
06-7575AR



VINTAGE Y 01

REF. NO.	PART or ML	DESCRIPTION	REMARKS
1	AAA6333EY2	Assembly, Motor/Input Shaft Page 5 for Replacement Parts	---
2	7575AP3	Assembly, Intermediate Shaft Page 8 for Replacement Parts	---
3	7575AP4	Assembly, Output Shaft Page 8 for Replacement Parts	---
4	7575AP2	Kit, 306DT Service Rebuild, Complete. Includes: Motor/Input Shaft Assembly, Intermediate Shaft Assembly, Output Shaft Assembly, & All Required Sundries for a Complete Machine Rebuild. p. 2.	Long Shaft
	7575AP9		Short Shaft

Shaft Parts

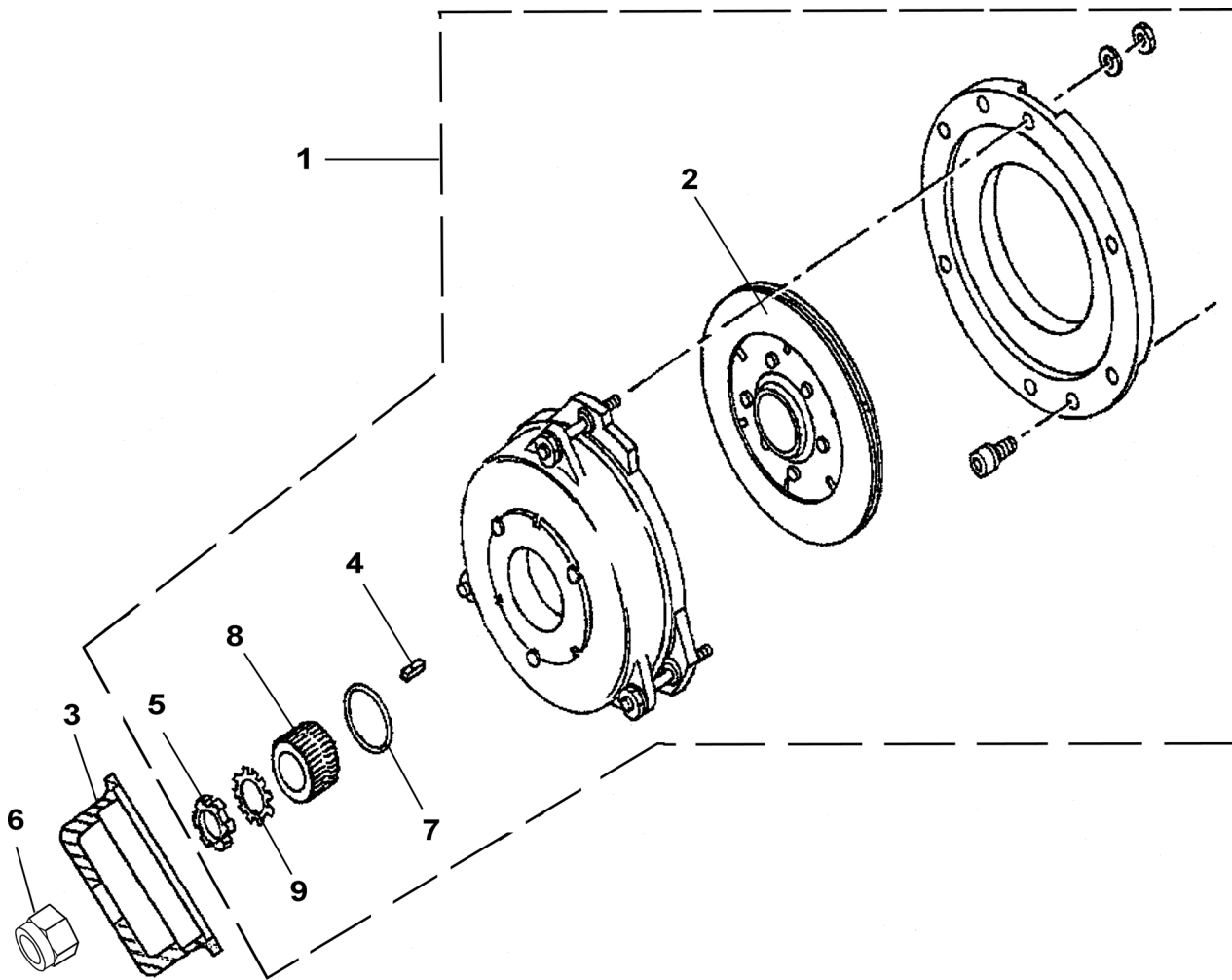


VINTAGE Y 01

REF. NO.	PART or ML	DESCRIPTION
1	AAA209AS5	Bearing, Tapered Roller, Intermediate Shaft, 45 mm Inside Diameter
2	AAA209AS6	Bearing, Tapered Roller, Intermediate Shaft, 40 mm Inside Diameter
3	AAA209AS7	Bearing, Tapered Roller, Intermediate Shaft, 80 mm Inside Diameter
4	AAA209AS8	Bearing, Tapered Roller, Intermediate Shaft, 85 mm Inside Diameter
5	AAA194BB2	Key, Output Shaft, Sheave Shaft
6	AAA255HD8	Kit, Shim Set: (4) 0.002 in., (4) 0.005 in., & (4) 0.020 in. Thick Shims
7	AAA255HD4	Kit, Shim Set: (4) 0.002 in., (4) 0.005 in., & (4) 0.020 in. Thick Shims
8	7575AR/150x3 182H65	O-Ring, \varnothing 150 x 3 mm
9	7575AR/150x3 182H66	O-Ring, \varnothing 134 x 3 mm
10	AAA33AS3	Seal, Oil, 85 x 110 x 12 mm

Brake Parts

06-7575AR

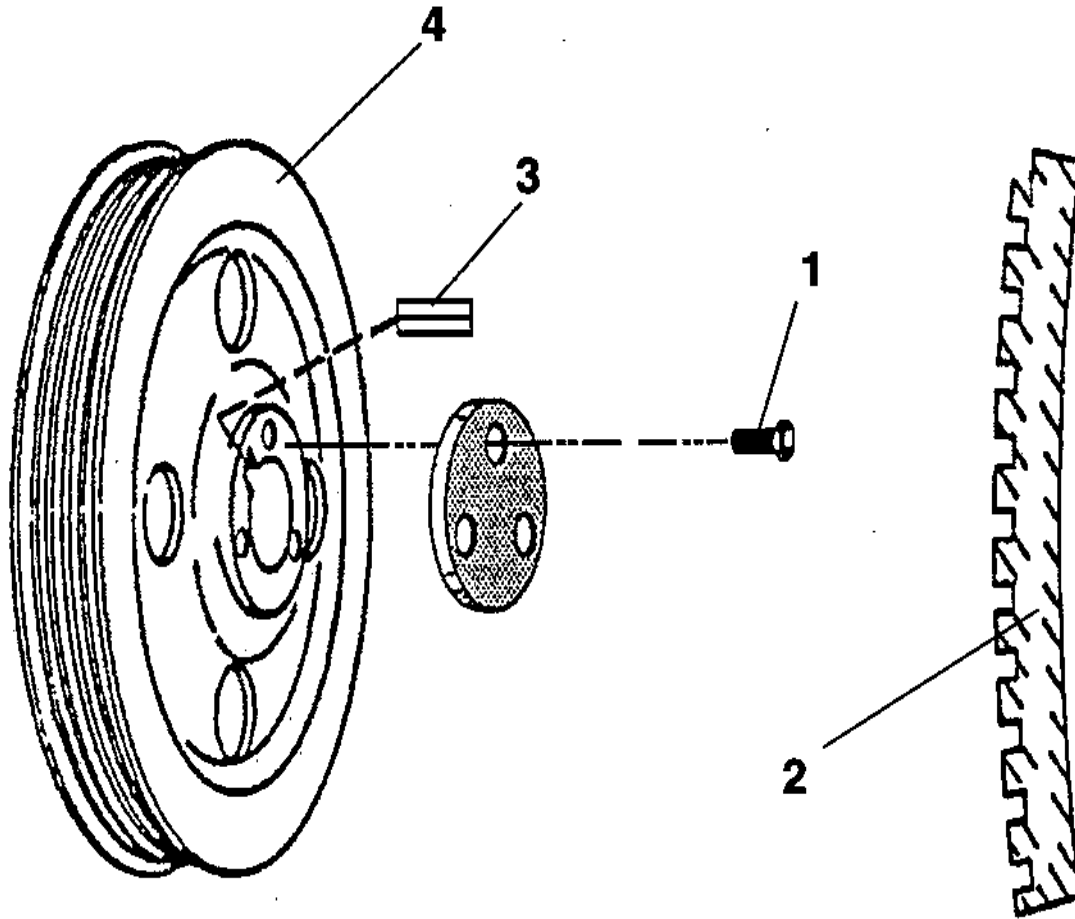


TIP 6.2.8-4 for air gap and torque adjustment.

VINTAGE Y 01

REF. NO.	PART or ML	DESCRIPTION
1	AAA7575BB1	Brake Assembly, Complete
2	AAA7575BC1	Brake Disk Assembly
3	AAA329BJ1	Cap, Brake
4	AAA194BB4	Key, 6 x 7 x 34 mm
	AAA194BB7	Key, 8 x 7 x 27 mm
5	72FJ1	Nut, Bearing Type, M25 x 1.5
6	DIN982 M12-8-Z	Nut, M12 Nylon (ISO7041 M12-8-Z)
7	7575AW/60 x 3 182H67	O-ring, 58 x 3 mm (Length = 181 mm)
8	AAA397BK1	Splined Hub, Includes O-Ring Ref. 6
9	130AT1	Washer, Tabbed, M25

Drive Sheave Parts

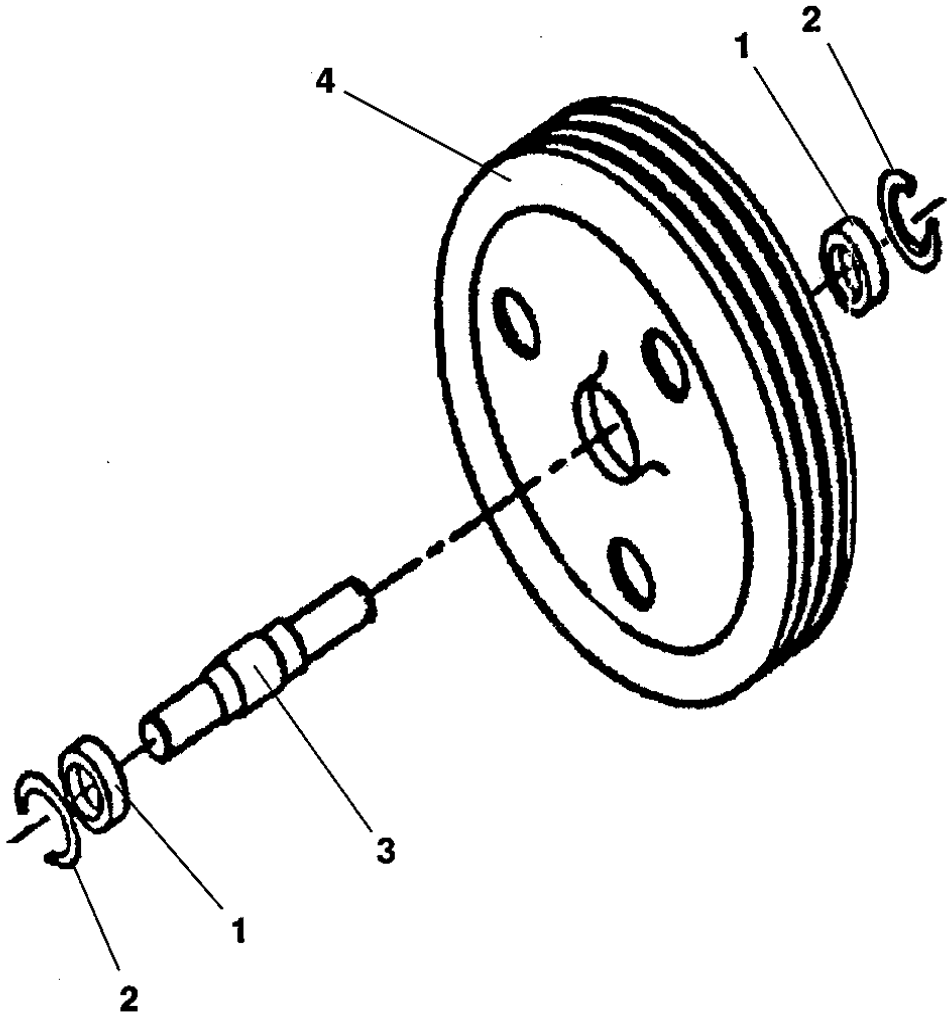


VINTAGE Y 01

REF. NO.	PART or ML	DESCRIPTION		
1	58AD67	Bolt, Sheave Retaining, <table border="1" style="display: inline-table; vertical-align: middle;"><tr><td>ORDER</td></tr><tr><td>3</td></tr></table>	ORDER	3
ORDER				
3				
2	B251BV11 AAA251BV6	Insert, Treaded, for use with 260CL & 1F-260CL Drive Sheaves		
3	----	Key, Page 8, Ref. 5		
4	260CL4	Sheave, Drive, 25 in. (635 mm) (3) 5/8 in. Ropes w/ B251BV11 Treaded Insert. For "long" output/sheave shaft, Page 2.		
	1F-260CL2	Sheave, Drive, 25 in. (635 mm) (3) 5/8 in. Ropes w/ B251BV11 Treaded Insert. For "short" output/sheave shaft, Page 2.		
	260CL6	Sheave, Drive, 25 in. (635 mm) (4) 5/8 in. Ropes w/ B251BV11 Treaded Insert. For "long" output/sheave shaft, Page 2.		
	1F-260CL4	Sheave, Drive, 25 in (635 mm). (4) 5/8 in. Ropes w/ B251BV11 Treaded Insert. For "short" output/sheave shaft, Page 2.		

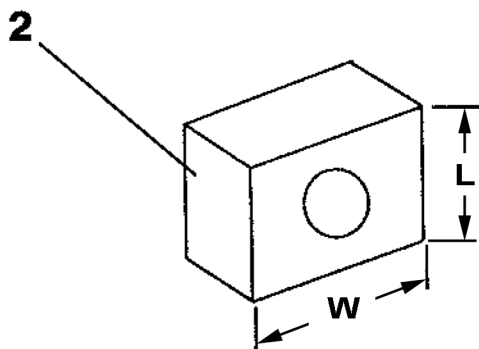
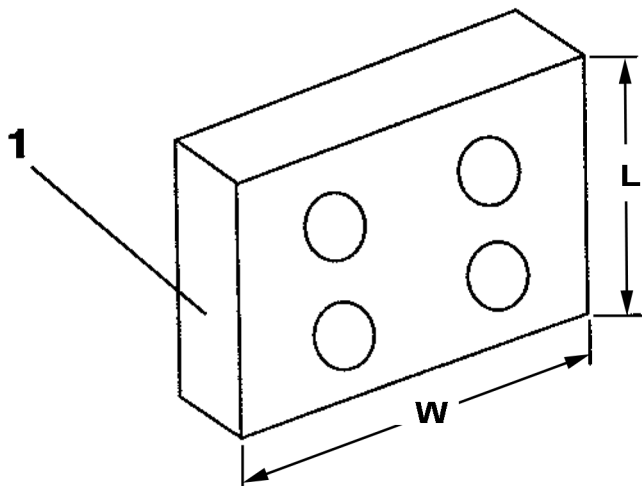
Deflector Sheave Assembly

06-7575AR



VINTAGE Y 01

REF. NO.	PART or ML	DESCRIPTION
1	207Z90	Bearing
2	172PM20	Ring, Retaining, #472
3	495DM1	Shaft, Deflector Sheave
4	B263BG1	Sheave, Deflector, 25 in. (635 mm) ↻ (3) 5/8 in. Ropes
	263BL1	Sheave, Deflector, 25 in. (635 mm) ↻ (4) 5/8 in. Ropes



VINTAGE Y 01		
REF. NO.	PART or ML	DESCRIPTION
1	310BE1	Isolation, Sound, Rectangular, 6 in. L x 6 in. w, (4) 1 in. dia. Holes
2	310BE3	Isolation, Sound, Rectangular, 3 in. L x 3 in. w, (1) 1 in. dia. Holes