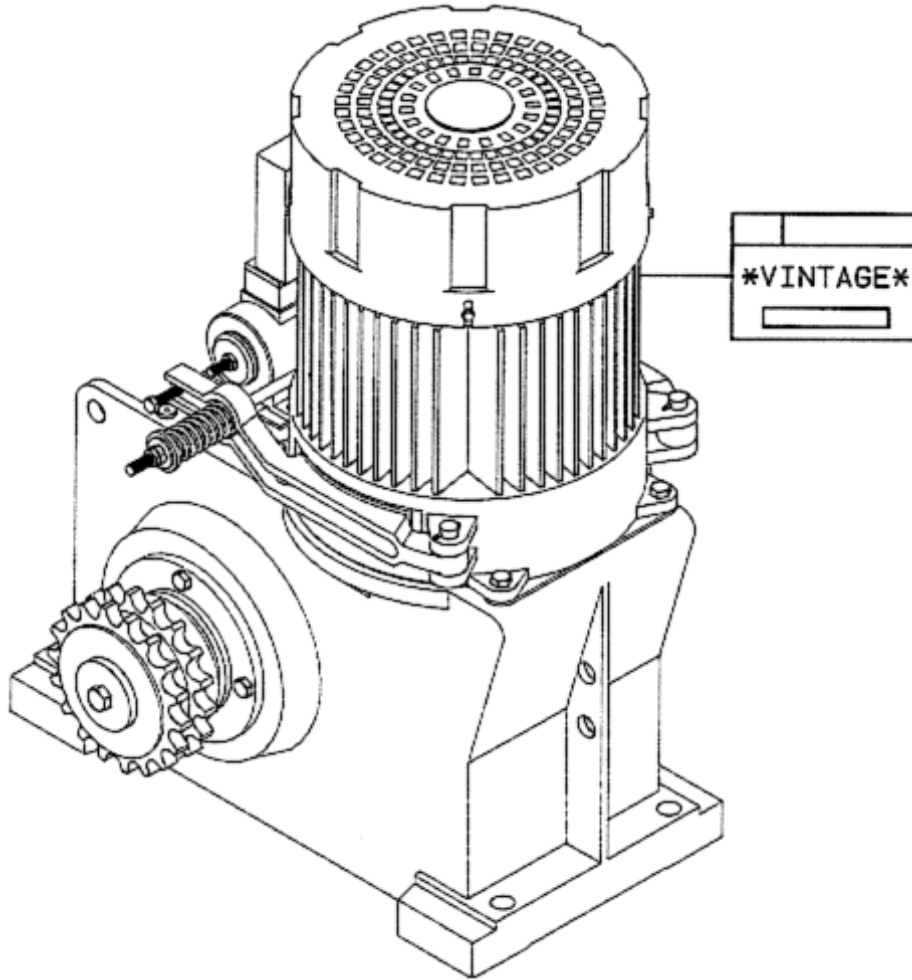


SPL 06-9703AD - Machine Escalator Chain Drive 16 VEC-RH

Unpublished Work - © Otis Elevator Company. Any unauthorized reproduction, disclosure, or distribution of copies or content by any person of any portion of this work may be a violation of Copyright Law of the United States of America. All rights reserved.

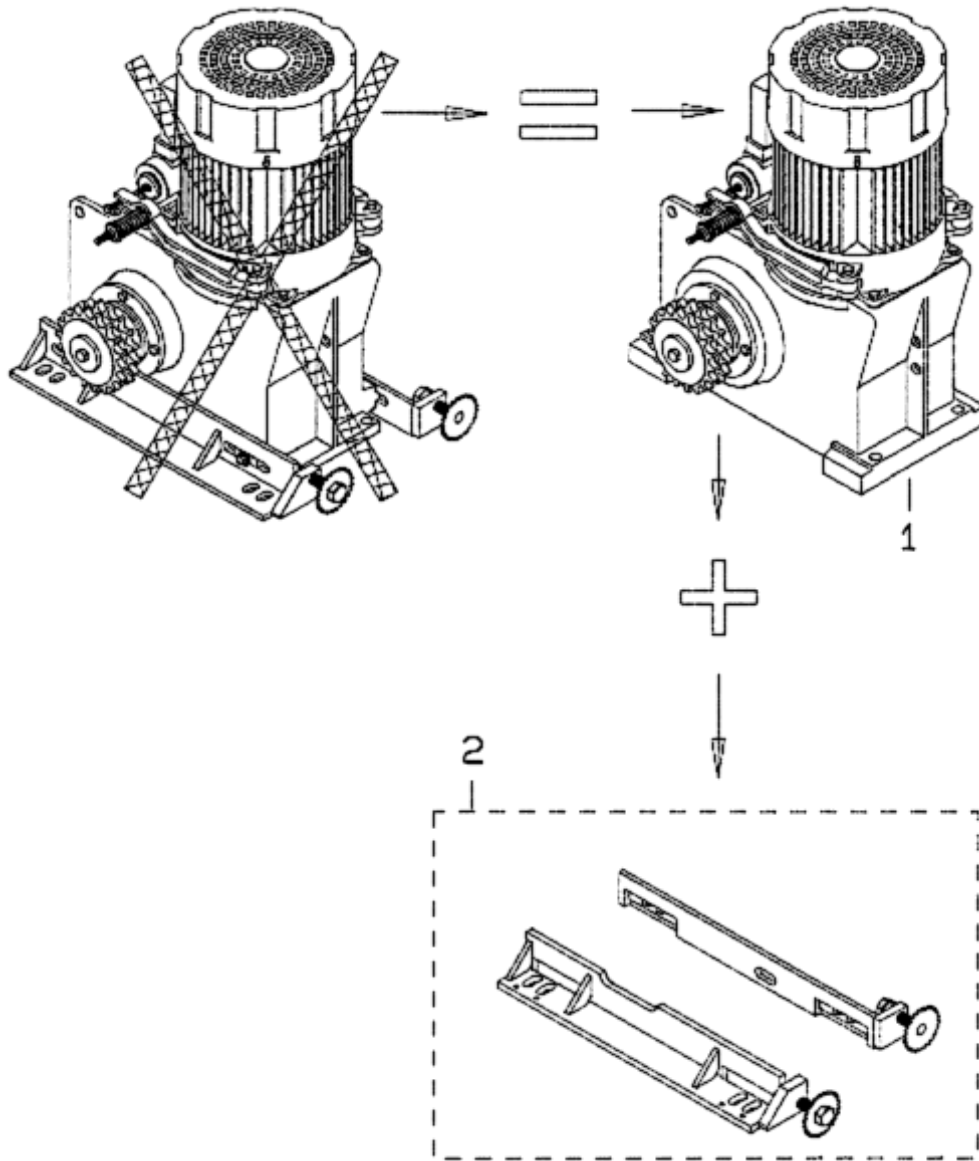
January 1993

Page 1



SPL 06-9703AD - Machine Escalator Chain Drive 16 VEC-RH

Page 2



VINTAGE G.01 & G.02

REF.	PART NO.	DESCRIPTION			
1	---	To <table border="1" style="display: inline-table; vertical-align: middle;"><tr><td>ORDER</td></tr><tr><td> </td></tr><tr><td> </td></tr></table> Page 3	ORDER		
ORDER					
2	GO2500AX11	Adapter			

SPL 06-9703AD - Machine Escalator Chain Drive 16 VEC-RH

TO ORDER A MACHINE PROVIDE THE FOLLOWING INFORMATIONS.
 RENSEIGNEMENT A FOURNIR POUR COMMANDER UNE MACHINE.
 BEI DER BESTELLUNG EINER MASCHINE SIND FOLGENDE ANGABEN ZU MACHEN.
 INFORMAZIONI DA FORNIRE PER ORDINARE UNA MACCHINA.
 INFORMACION NECESSARIA PARA HACER UN PEDIDO DE MAQUINA.
 INFORMAÇÕES NECESSÁRIAS PARE FAZER UM PEDIDO DE MÁQUINA.

TYPE OF MACHINE
 TYPE DE MACHINE
 MASCHINENTYP
 TIPO DELLA MACCHINA
 TIPO DE MAQUINA
 TIPO DE MÁQUINA

CONTRACT NUMBER
 NOMBRE DE COMMANDE
 AUFTRAGSNUMMER
 NUMERO DI CONTRATTO
 NUMERO DE CONTRATO
 NÚMERO DE CONTRATO

WORM SHAFT
 ARBRE A VIS
 SCHNECKENWELLE
 VITE PER PETUE
 TORNILLO SIN FIN
 VEIO SEM FIM

WORM WHEEL
 ROUE A VIS
 SCHNECKENRAD
 ROUTA EL ICOIDALE
 CORONA
 RODA DE COROA

BRAKE SHEAVE
 TAMBOUR DE FREIN
 BREMSSCHEIBE
 DISCO DEL FRENO
 DISCO DE FRENO
 TAMBOR DE FREIO

STATOR WITH WINDING
 STATOR AVEC BOBINAGE
 STATOR MIT WICKLUNG
 STATORE CON AVVOLGIMENTO
 INDUCIDO EMBOBINADO
 ESTACTOR BOBINADO

①

②

③

④

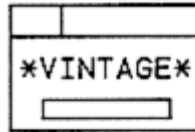
⑤

⑥

kW

V

Hz



OTIS 0

NO

UNIT NO

TYPE

kW

Hz

St/r

V

V₀

V_E

A cosφ

/min

INSUL. CL. °C

MAT. LIST

60102JN1

⑦

⑧

⑨

⑩

⑨

⑧

①

⑤

④

②

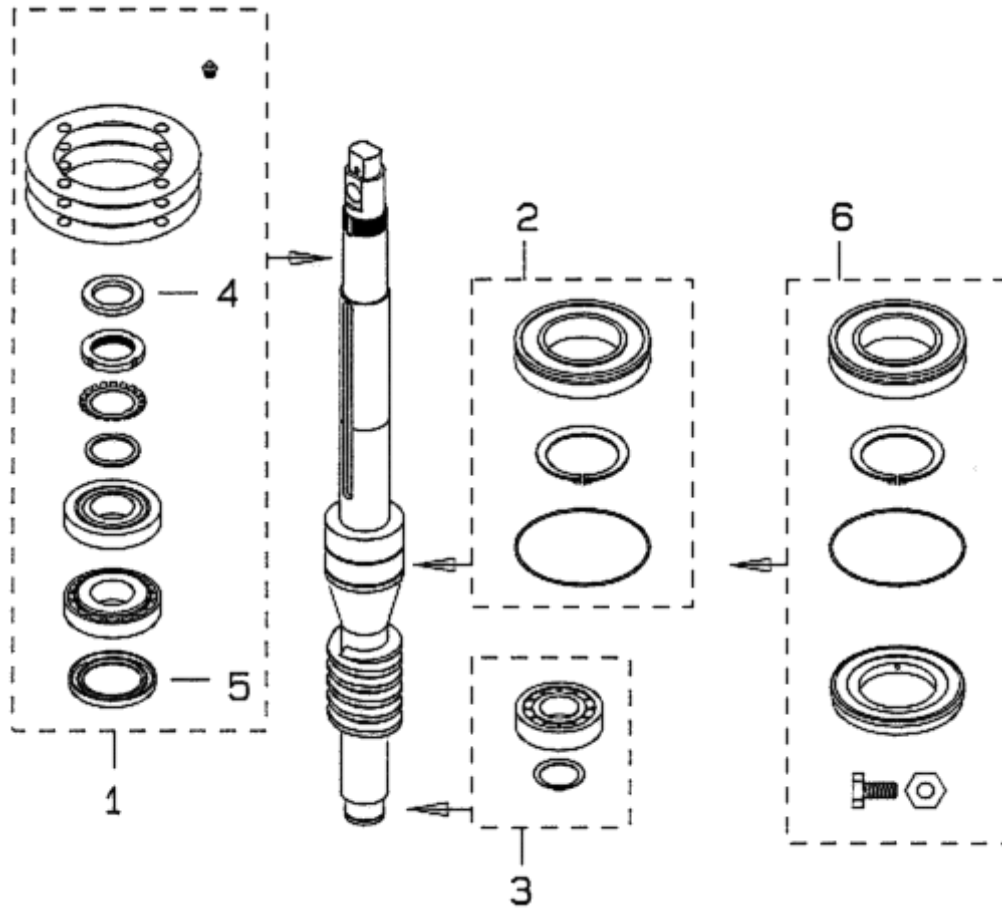
⑦

⑥

③

SPL 06-9703AD - Machine Escalator Chain Drive 16 VEC-RH

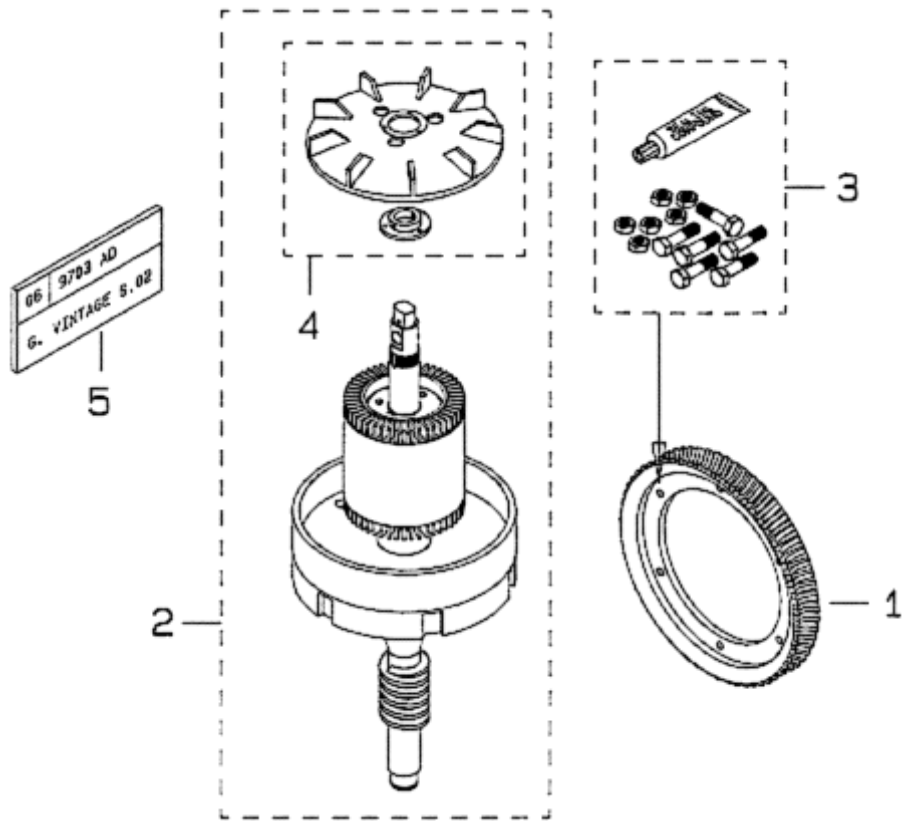
Page 4



	9703 AD	9704... ≤ 11.7 kW >11.7 kW	
	VINTAGE G.01 & G. 02	VINTAGE G.01	
REF.	PART NO.		DESCRIPTION
1	GO2500AX17	GO2500AX18	Bearing Complete
2	GO2500AX24		Bearing Complete
3	GO2500AX4		Bearing Complete
4	GO2500AX13		Oil Seal
5	GO2500AX15	GO2500AX14	Oil Seal
6	GO2500AX19		Bearing w/Oil Retaining Ring

SPL 06-9703AD - Machine Escalator Chain Drive 16 VEC-RH

Page 5

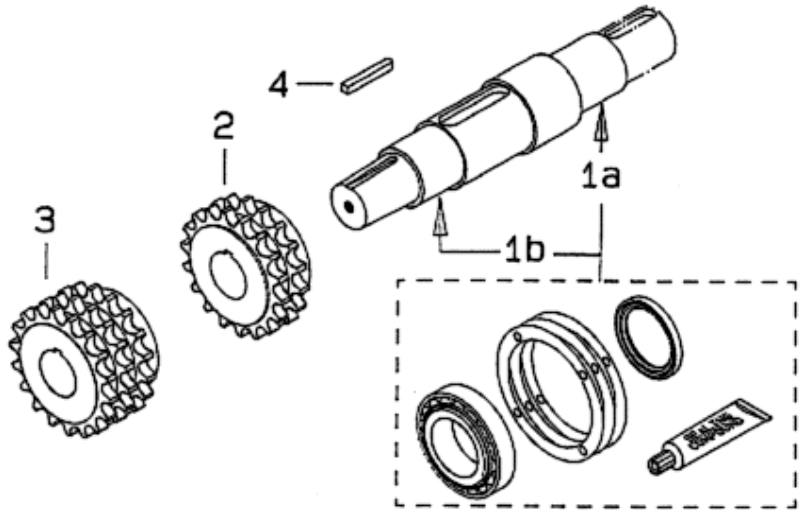


9703 AD	9704... <11.7 kW >11.7 kW
VINTAGE G.01 & G.02	VINTAGE G.01

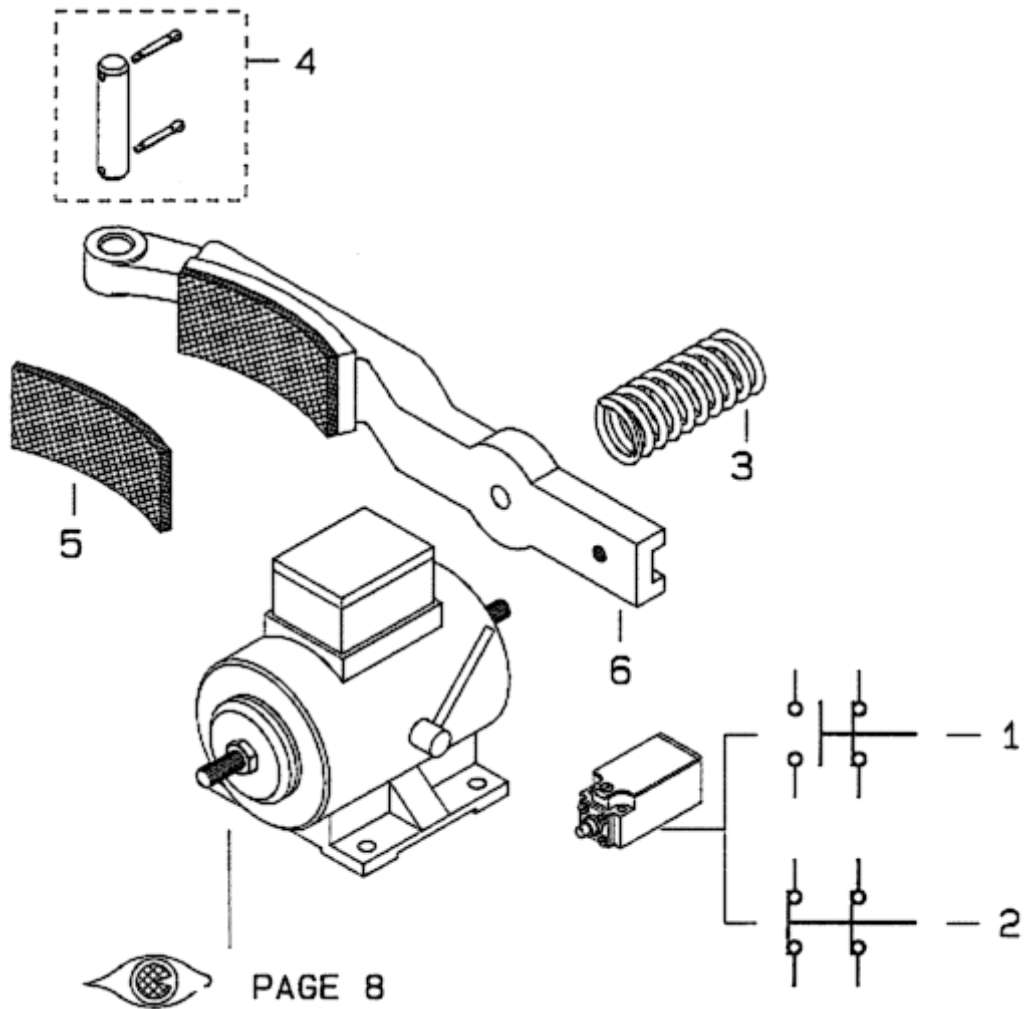
REF.	PART NO.	DESCRIPTION	
1	GO200J2	17 1/4: 1	Worm Wheel
	GO200J4	22 2/3: 1	
	GO200J5	28 1/2: 1	
	GO200J6	37 1/2: 1	
2	---	Worm Shaft Complete See Also Page 3, Ref. 3 & 5. 9703AD VINTAGE G.01 To order specify REF. No. 2 + 5	
3	GO2500AX1	Fastening Parts	
4	GO2500AX12	Fan	
5	GOA102JG219	---	Vintage Tag

SPL 06-9703AD - Machine Escalator Chain Drive 16 VEC-RH

Page 6



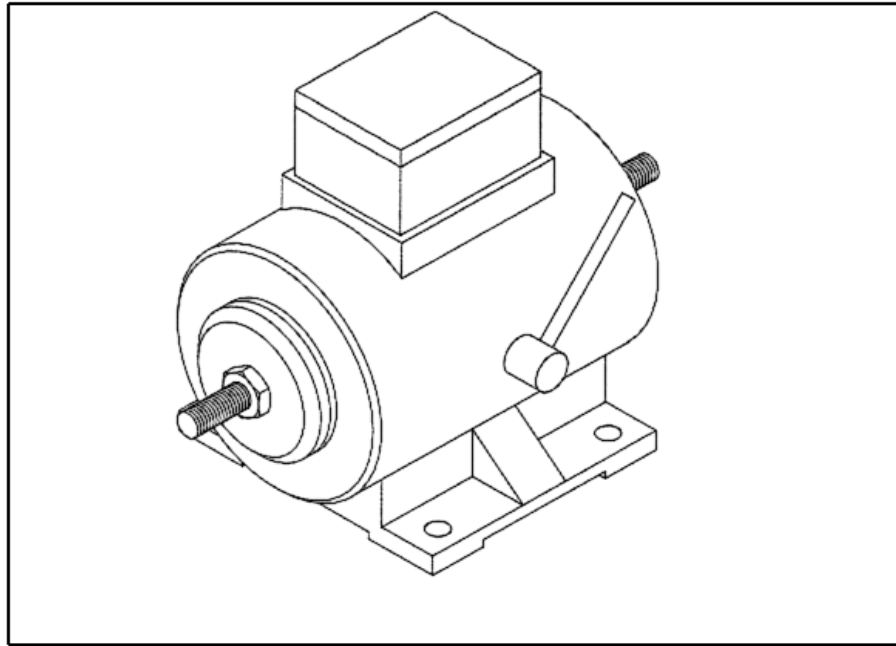
9703 AD		9704. . .				
VINTAGE G.01 & G.02		SINGLE DRIVE		DUAL DRIVE		
		VINTAGE G.01				
REF.	PART NO.			DESCRIPTION		
1a	GO2500AX5		GO2500AX5		Bearing Complete	
1b			GO2500AX9			
2	GO195HS1	GO195JP1	---		17 Teeth	Sprocket
	GO195HS2	GO195JP2			18 Teeth	
	GO195HS3	GO195JP3			19 Teeth	
	GO195HS4	GO195JP4			20 Teeth	
	GO195HS5	GO195JP5			21 Teeth	
	GO195HS6	GO195JP6			22 Teeth	
3	---		GO195HR1	17 Teeth		
			GO195HR2	18 Teeth		
			GO195HR3	19 Teeth		
			GO195HR4	20 Teeth		
			GO195HR5	21 Teeth		
			GO195HR6	22 Teeth		
4	GX192D501	192D24	Key			



ALL VINTAGES		
REF.	PART NO.	DESCRIPTION
1	GO177AG7	Switch
2	GO177BX1	
3	GO90AE1	Spring
4	GO2500AX6	Fastening Parts
5	GO416G2	Brake Lining
6	GO286T1	Brake Lever
	GO286AF1	Brake Lever With Electrical Contacts

SPL 06-9703AD - Machine Escalator Chain Drive 16 VEC-RH

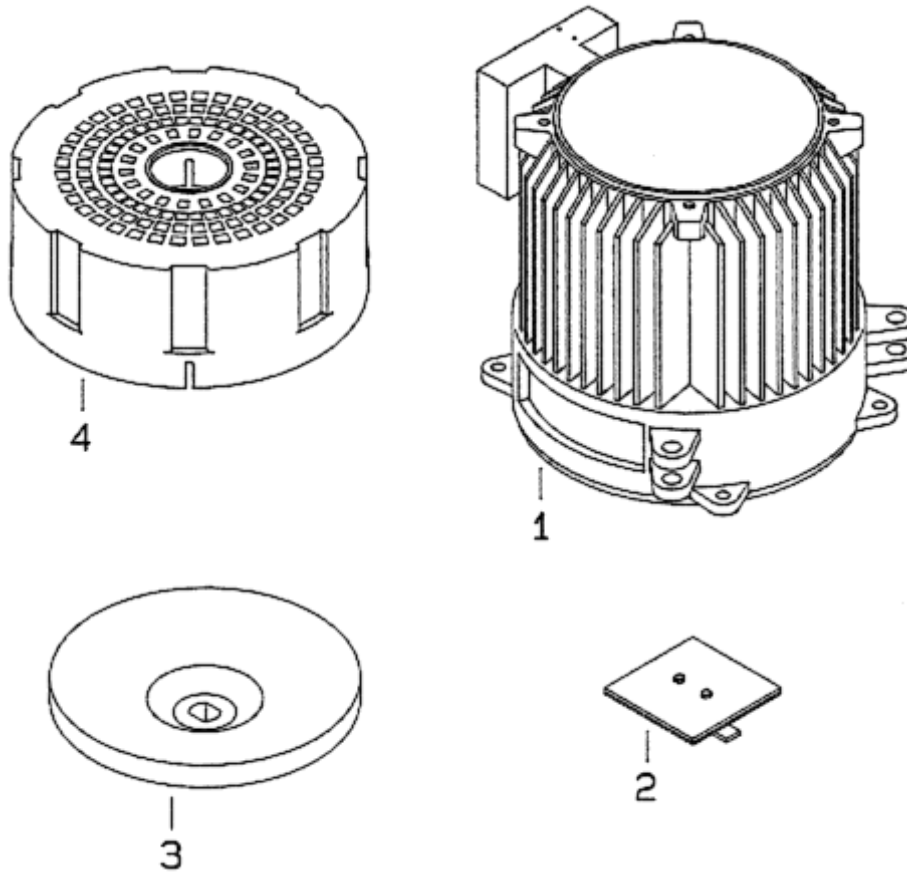
Page 8



ALL VINTAGES				
PART NO. G0222P	MAGNET FORCE PER SYSTEM	VOLTAGE	GLANDS for CABLES	ARRANGEMENT
1	230-480 N	220 VAC	PG 11	
2	510-550 N			
3	650-800 N			
4	230-480 N			
5	510-550 N	110 VAC	PG 13.5	Both Braking Coils Can Be Controlled Separately
6				
7	230-480 N	220 VAC	NPT1/2"-14	CSA Standard
8	510-550 N			
9				
10	230-480 N	120 VAC		
11		220 VAC		

SPL 06-9703AD - Machine Escalator Chain Drive 16 VEC-RH

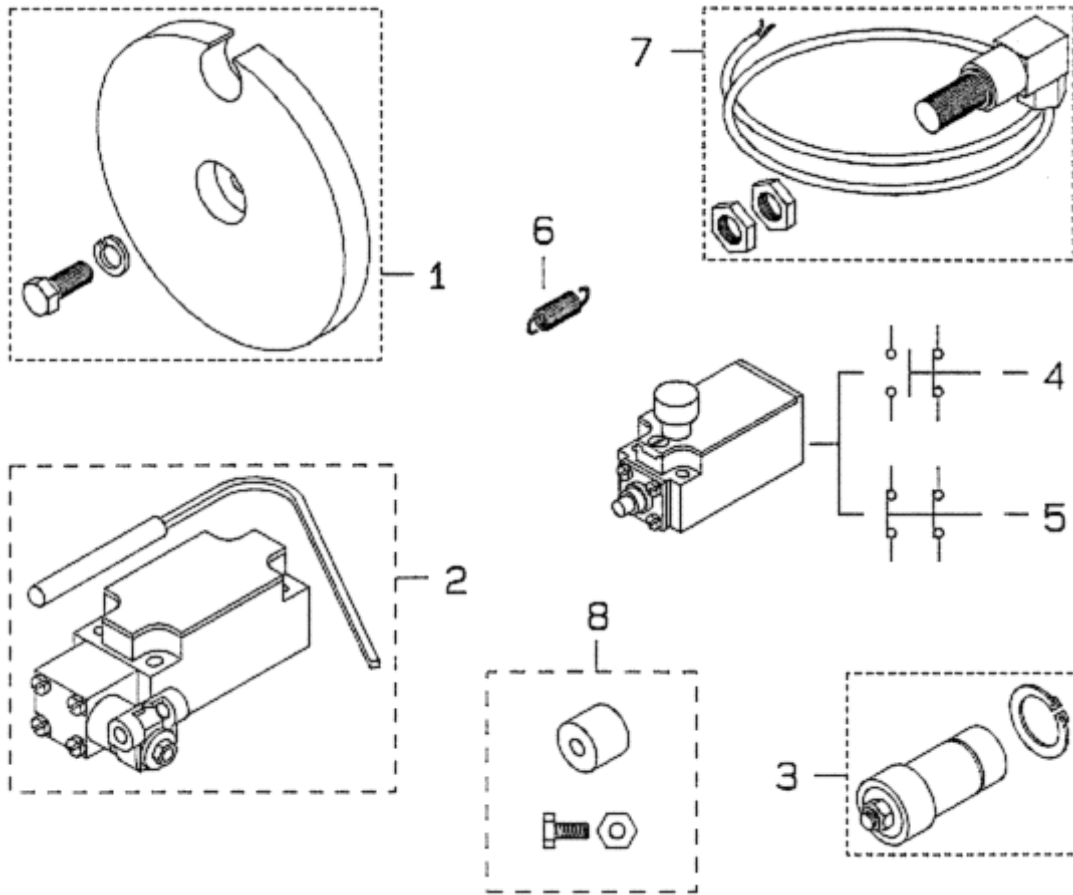
Page 9



ALL VINTAGES		
REF.	PART NO.	DESCRIPTION
1	---	Stator Complete See Also Page 3, Ref. 6
2	GOA329W1	Cover Complete
3	MCO290D5	Hand-Wheel
4	GO346NB1	Motor 3324 Fan Cowling, Plastic
	GO346MT1	Motor 2744
	GO346NX1	Motor 2744 Fan Cowling, Metal
	GO346NX2	Motor 3324

SPL 06-9703AD - Machine Escalator Chain Drive 16 VEC-RH

Page 10



ALL VINTAGES		
REF.	PART NO.	DESCRIPTION
1	GO2500AX8	Dog + Hardware for Fastening
2	GO177BM1	Non Reversing Switch
3	GO465BG1	50 Cycles Overspeed Governor
	GO465BG2	60 Cycles
4	GO177AG5	Overspeed Governor Switch
5	GO177BX4	
6	GO91E1	Spring
7	GO2500DE7	Impulse Generator
8	GO2000BG1	Test Weight Complete (for Overspeed Governor)