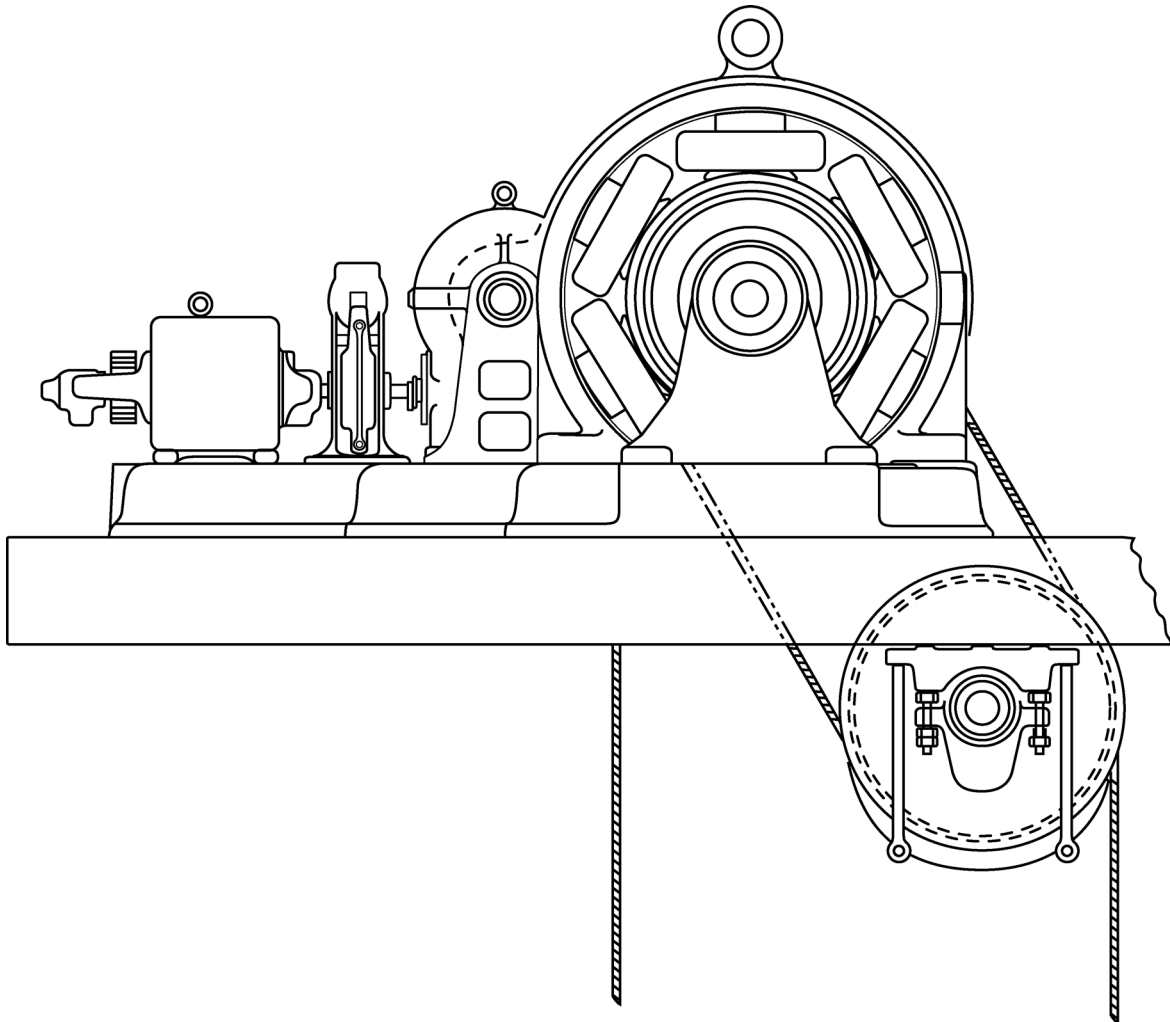


**Machine, Gearless
#84 Double-Wrap
Traction**

Spare Parts Leaflet

06-A381TM

January 21, 2015 / Page 1 of 7



OTIS

**SERVICE ENGINEERING
Otis Elevator Company
Bloomfield, Connecticut USA**

Unpublished Work—© Otis Elevator Co.; 2015

Leaflet Description

The 84 and 84A are DC gearless machines. A No. 874 machine is a No. 84 or No. 84A machine retrofitted with a 74D brake. A standard No. 84, 84A, or 874 machine is arranged for double wrap traction (DWT). This leaflet covers the service parts for the NSAA manufactured machines.

Leaflet Revisions

Date Revised	Subject Matter Expert	Reason for Revision
June 11, 2003	Nicholas Grant	New leaflet, initial release.
January 21, 2015	Val Sheynkman	Updated p. 6; Updated document template

Related Drawings

Drawing No.	Title	Drawing No.	Title
A381TM	#84 General Arrangement Drawing	D383-TM	#84 General Arrangement Drawing
RG-100-5	#874 General Arrangement Drawing	562-SH 563-SH	Drive Sheave

Related Documents

Document ID	Title
SPL 06-6913F	#74 Machine Single- & Double-Wrap Traction
T.I.P. 6.0-1	Replacement of Brake Linings
T.I.P. 6.1.0-5	Gearless Machines with Hollow Armature Shaft
Service Engineering Letter 9A	Application of Brakes for Service Work
Service Engineering Letter 26	Changing #84 or #84A Machine to M.M.M.

Subject Matter Expert

Name	Department
Val Sheynkman	OSC, Service Engineering

About Spare Parts Leaflets...

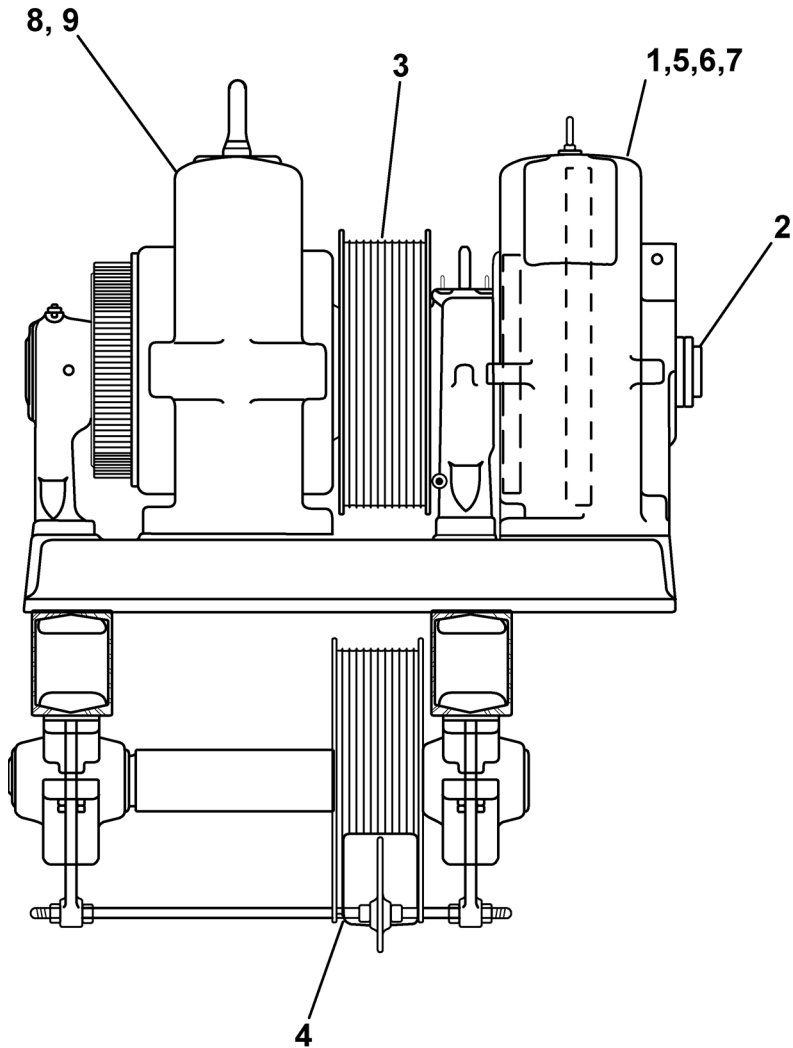
This document lists the lowest replaceable units (LRUs) for the standard version of the product. The LRUs are chosen by a team of Otis associates representing engineering and manufacturing.

While goal of this document is to make parts identification as easy as possible, the document cannot be all-inclusive. Elevator and escalator contracts classified as "special" or "custom" are not addressed here. For such contracts, please refer to specified information, the contract folder, TIPs, Field Education Articles, Construction Letters, etc. for further information.

If you have any suggestions about this document, please contact the subject matter expert listed on this page.

Table of Contents

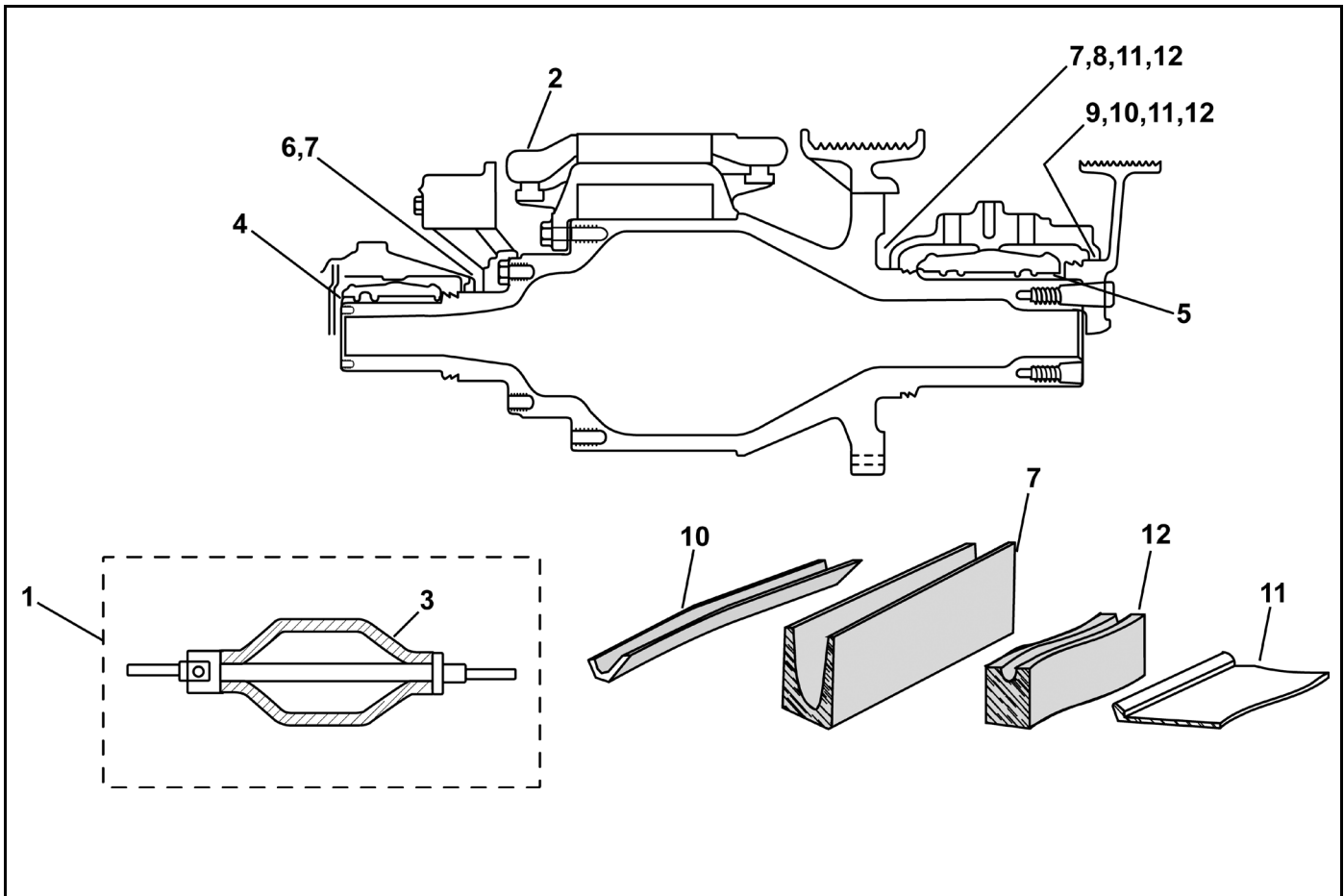
06-A381TM




REF. No.	PAGE No.	DESCRIPTION
1	5	Assembly, Brake
2	4	Shaft, Armature
3	6	Sheave, Drive, Double-Wrap Traction
4	7	Sheave, Secondary
5	---	Assembly, Brake, Arm Parts for 74D Brake
6	---	Assembly, Brake, Magnets and Coil for 74D Brake
7	---	Assembly, Brake, Upper Lever for 74D Brake
8	---	Coils, Motor Field
9	---	Parts, Brush Holder

See SPL 06-6913F

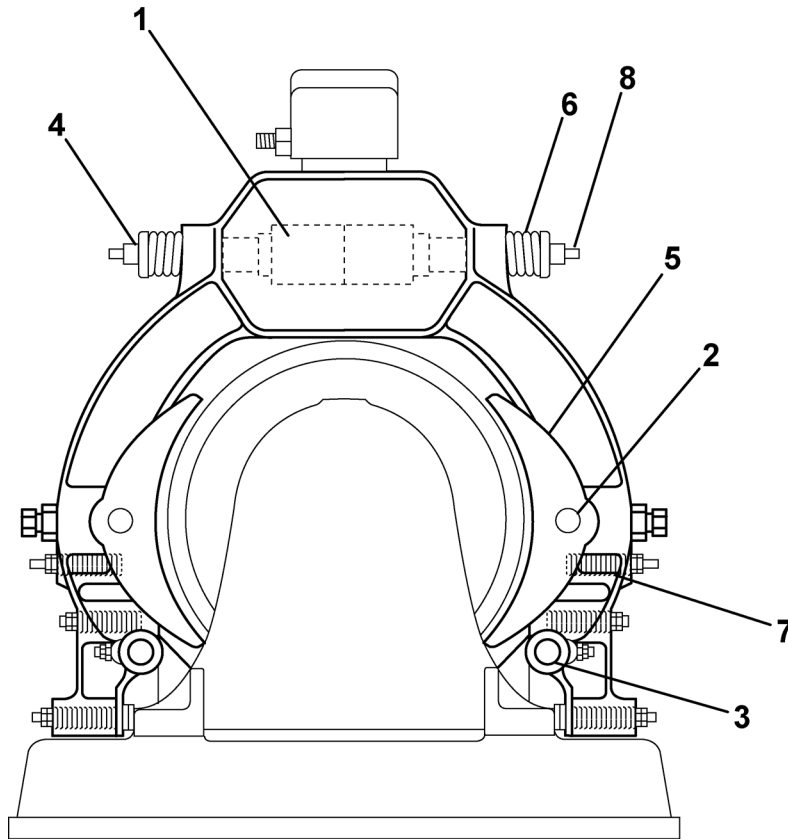
Armature Shaft



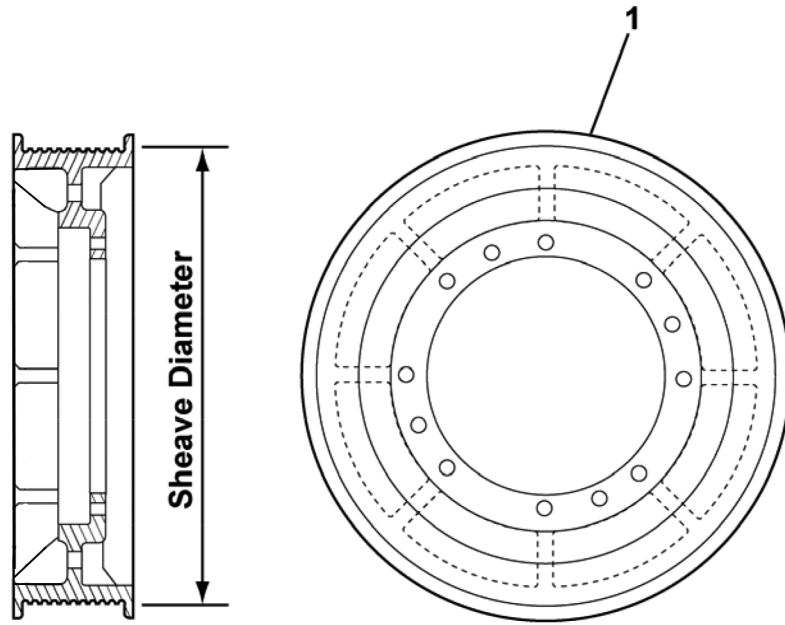
REF. No.	MACHINE TYPE		DESCRIPTION
	#84	#84A	
1	---		Kit, for Reinforcing Hollow Armature Shaft ( TIP 6.1.0-5)
2	---		Set, Armature Coil (contact OSC Spare Lending)
3	---		Shaft, Armature, Hollow
4	1-A361TM1		Sleeve, Motor Shaft Front Bearing (Cadtex babbitt)
5	206W1		Sleeve, Motor Shaft Rear Bearing (Cadtex babbitt)
6	33A19	---	Seal, Commutator End
7	---	VP-768350	Extrusion, Rubber, 5 ft. L
8	33A20	---	Seal, Sheave End, Inside
9	33A21	---	Seal, Sheave End, Outside
10	---	VP-768300	Extrusion, Rubber, 3 ft. L
11	---	VP-768450	Extrusion, Rubber, 6-1/2 ft. L
12	---	VP-768500	Extrusion, Rubber, 6 ft. L

Brake Assembly

06-A381TM



REF. No.	PART No.	DESCRIPTION
1	126307 133909	Core, Magnet, Adjustable
2	806668	Pin, Brake Shoe, 1-3/4 in. \varnothing , 6-3/8 in. L
3	806667	Pin, Brake Arm, 1-3/4 in. \varnothing , 10-1/2 in. L
4	806646	Seat, Spring
5	126563	Shoe, Brake w/Lining (see TIP 6.0-1)
6	860648 90RD4	Spring, 4 in., 8.1/2 in. L
7	806649 90NC3	Spring, Brake Shoe, 1-5/8 in. \varnothing , 2-3/4 in. L
8	126015	Rod, Brake Lever

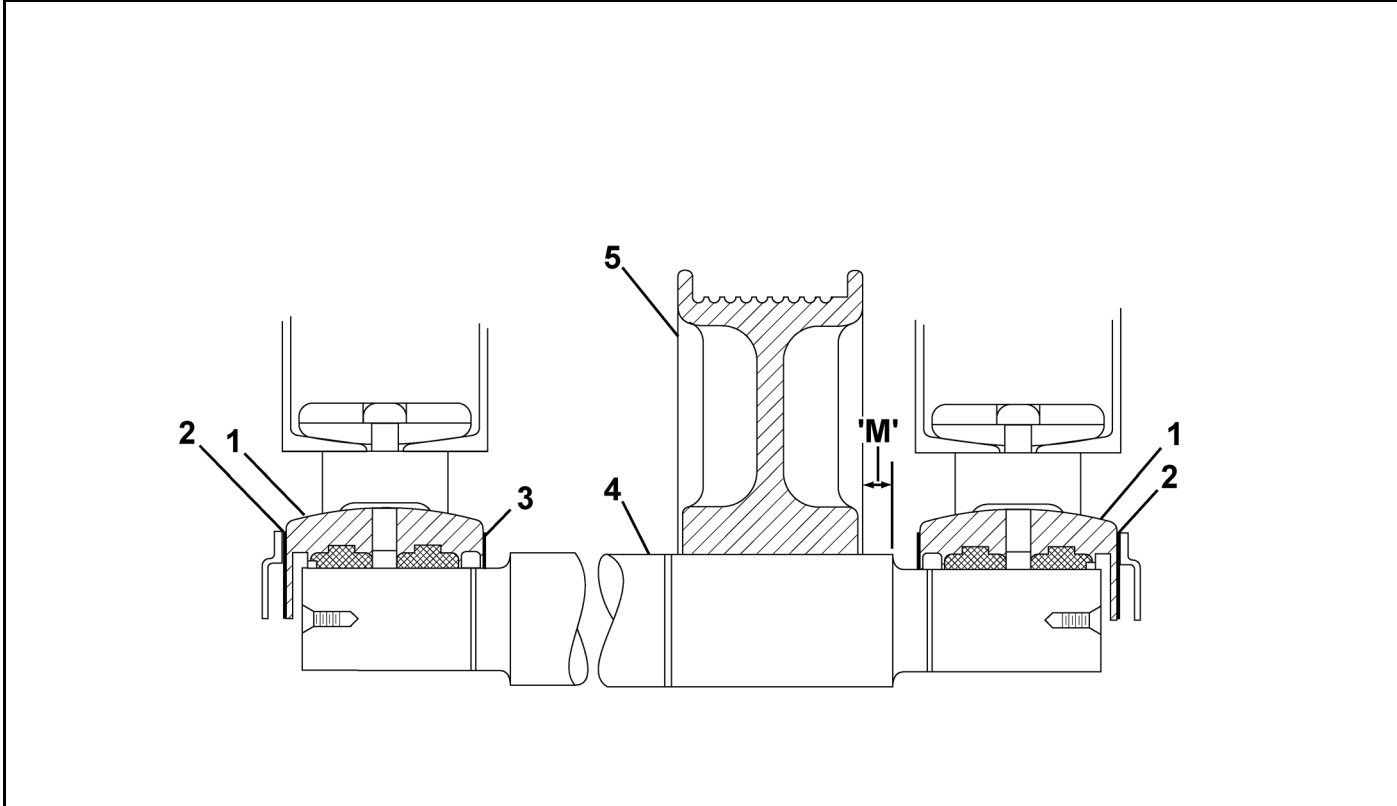


REF. No.	MACHINE TYPE		DESCRIPTION			
	#84	#84A	#874	Sheave \varnothing (in.)	No. of Grooves	Rope \varnothing (in.)
1	807890	807890-874		30 See NOTE	12	1/2
	807889	807889-874				5/8
	808630	808630-874			10	
	807893	---		36	12	1/2
	807892	---			10	5/8
	807891	---			12	

NOTE: See Service Engineering letter No. 26, dated 01/15/1065, Note 3.

Secondary Sheave and Shaft With Babbitted Bearings

06-A381TM



REF. NO.	PART or ML	DESCRIPTION	
1	403275 210AK1	Bearing, Shaft, Secondary Sheave, not Bored for Oil Seal	Type 6571B
2	376H3	Gasket	
3	103277 376BD2	Gasket, Vellumoid	
4	806653	Shaft, Secondary Sheave, 55-1/4 in. L	

REF. NO.	PART or ML	DESCRIPTION	Ropes		'M' (in.)
			Sheave \varnothing	No. of Grooves \varnothing (in.)	
5	804292 262G1	Sheave, Secondary	33	12 5/8	1-1/8 in.
	807933 262G2		33	12 1/2	
	807760		33	10 5/8	
	807945		27	12 1/2	---
	83859		27	12 5/8	---