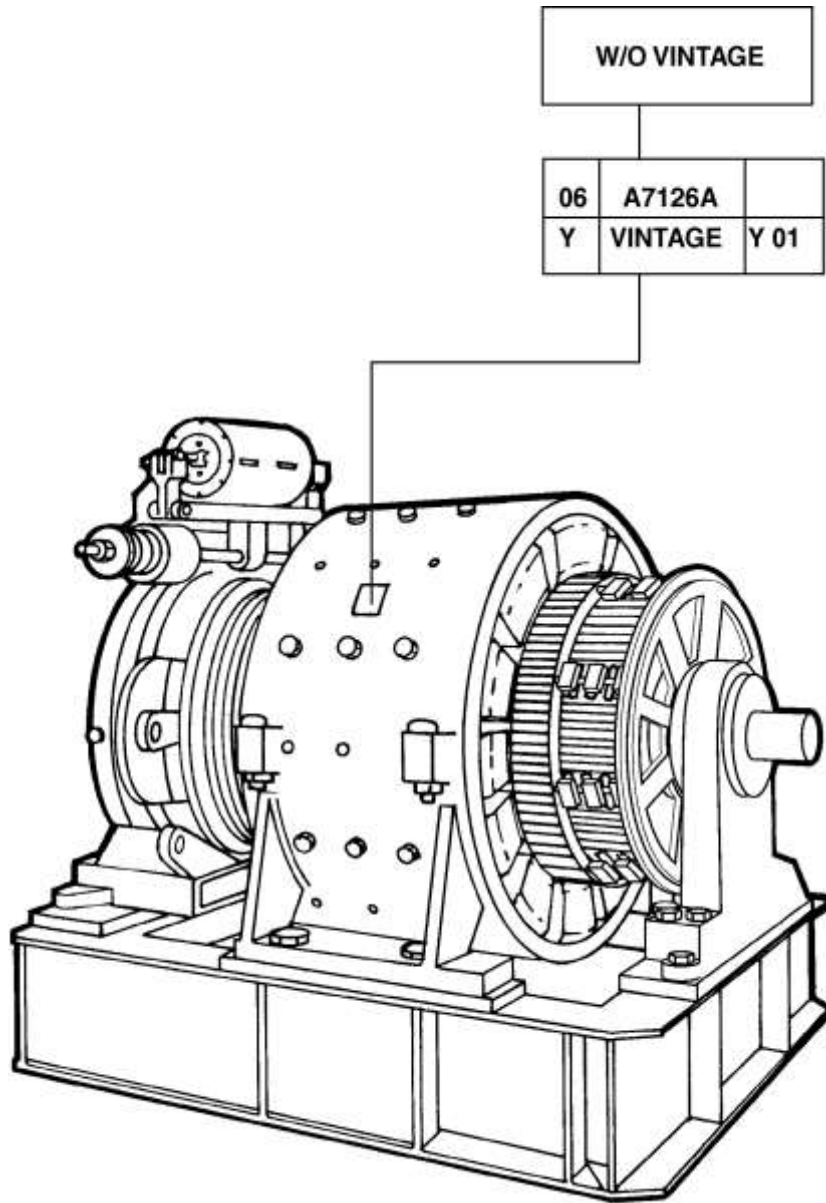


# 339HT Machine

## Spare Parts Leaflet

### 06-A7126A

March 23, 2022 / Page 1 of 12



# OTIS

**SERVICE ENGINEERING**  
**Otis Elevator Company**  
**Bloomfield, Connecticut USA**

Unpublished Work—© Otis Elevator Co.; 2022

**Leaflet Description**

The 339HT is a DC drive gearless machine. It is Otis' largest DC machine to date (1997) and has been produced at both the NAA Yonkers and Bloomington plants. The standard 339HT is arranged only for Double Wrap Traction (DWT).

This leaflet provides the service parts for the 339HT machine.

**Leaflet Revisions**

<b>Date Revised</b>	<b>Subject Matter Expert</b>	<b>Reason for Revision</b>
June 1998	Jesse Richter	New leaflet
June 1, 2000	Nicholas Grant	Update parts and artwork
September 14, 2016	Gary Mendrala	Updated document template; Corrected p/n A494HN2 in ref. 5 on p. 8
March 23, 2022	Gary Mendrala	Added sheaves p/ns 1-261P1 and 1-262AA1

**Related Drawings**

<b>Drawing No.</b>	<b>Title</b>	<b>Drawing No.</b>	<b>Title</b>
7126A	339HT Machine	A7126A	(after July 1979)
A261P	Drive Sheave	A7126C	Sec. Sheave Assy (DWT)
7126G	Sound Isolation	7126R	Sound Isolation
1-261P	Drive Sheave	A7126C	Secondary Sheave Assembly
1-262AA	Secondary Sheave		

**Related Documents**

<b>Document ID</b>	<b>Title</b>
SPL 06-AAA21430E	Encoders for Geared, Gearless & Mod Machines
TIP 6.1.0-3	Gearless Machine Brakes, Core Guides, Bearings

**Subject Matter Expert**

<b>Name</b>	<b>Department</b>
Gary Mendrala	OSC Service Engineering

**About Spare Parts Leaflets...**

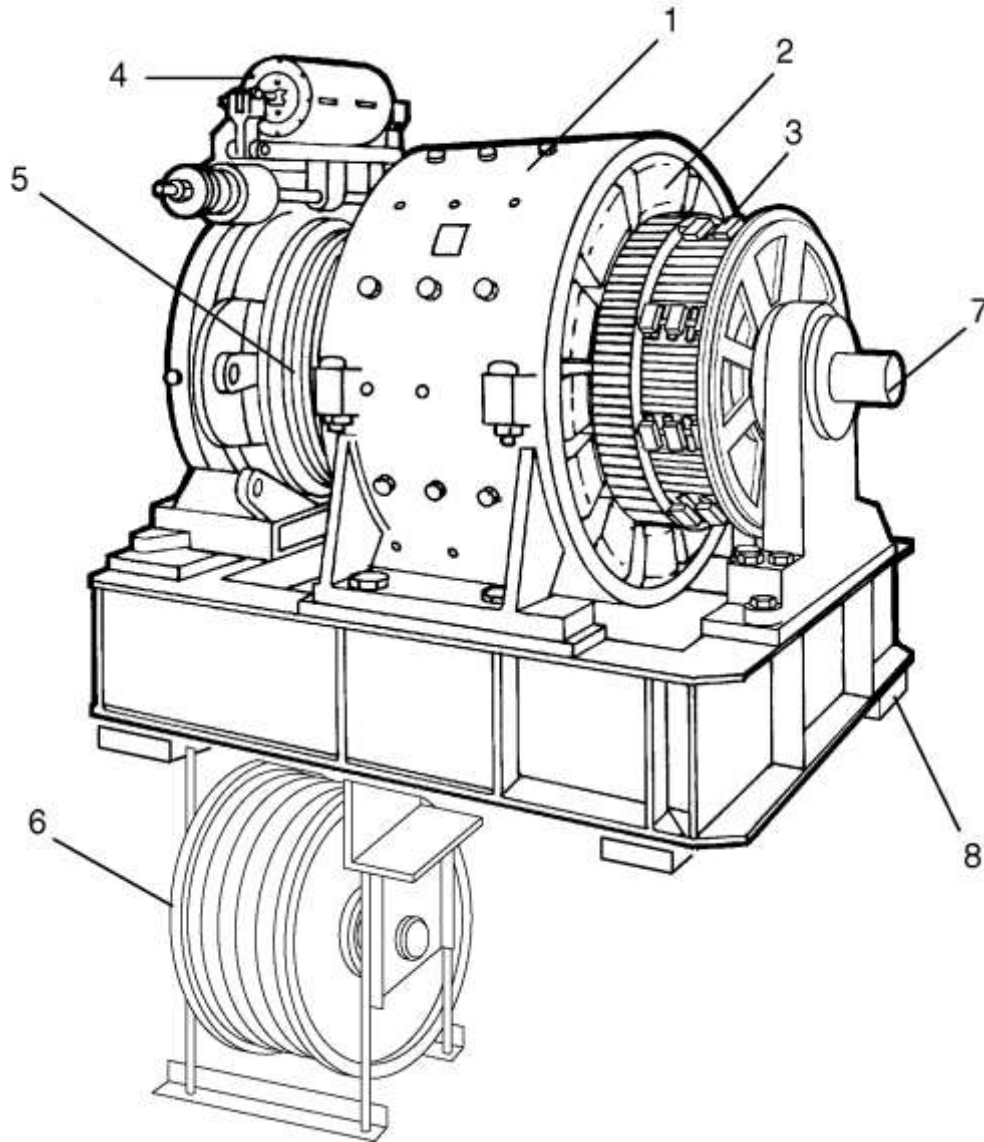
This document lists the lowest replaceable units (LRUs) for the standard version of the product. The LRUs are chosen by a team of Otis associates representing engineering and manufacturing.

While goal of this document is to make parts identification as easy as possible, the document cannot be all-inclusive. Elevator and escalator contracts classified as "special" or "custom" are not addressed here. For such contracts, please refer to specified information, the contract folder, TIPs, Field Education Articles, Construction Letters, etc. for further information.

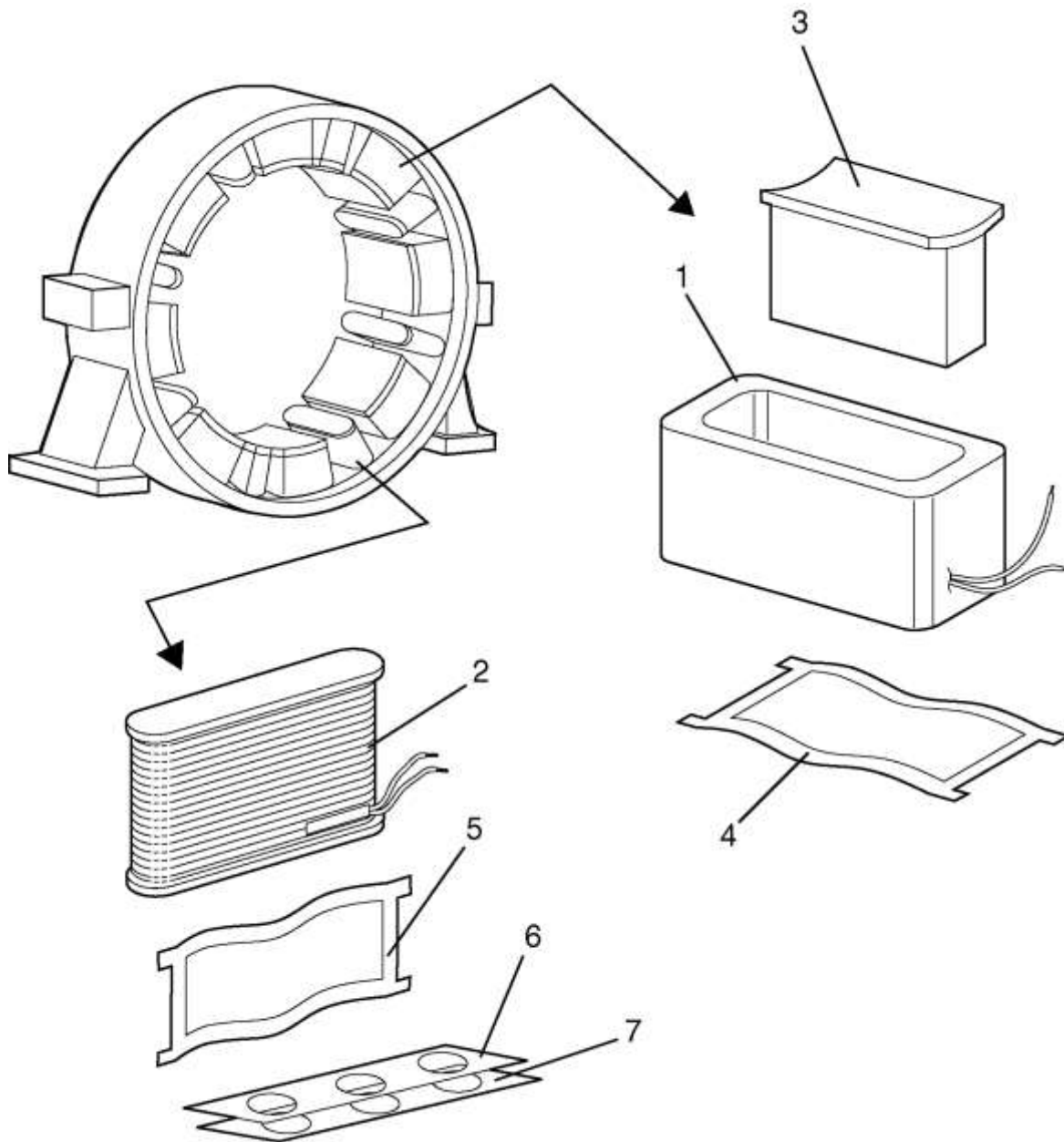
If you have any suggestions about this document, please contact the subject matter expert listed on this page.

# Table of Contents

**06-A7126A**



REF. NO.	PAGE	DESCRIPTION
1	p. 4	Motor Field Coils
2	p. 5	Armature Shaft Bearings & Armature Coils
3	p. 6	Brush Holders & Brushes
4	p. 7 & 8	Brake Parts
5	p. 9	Drive Sheave
6	p. 10	Secondary Sheave (DWT)
7	p. 11	Encoder & Tachometer Generator
8	p. 12	Sound Isolation

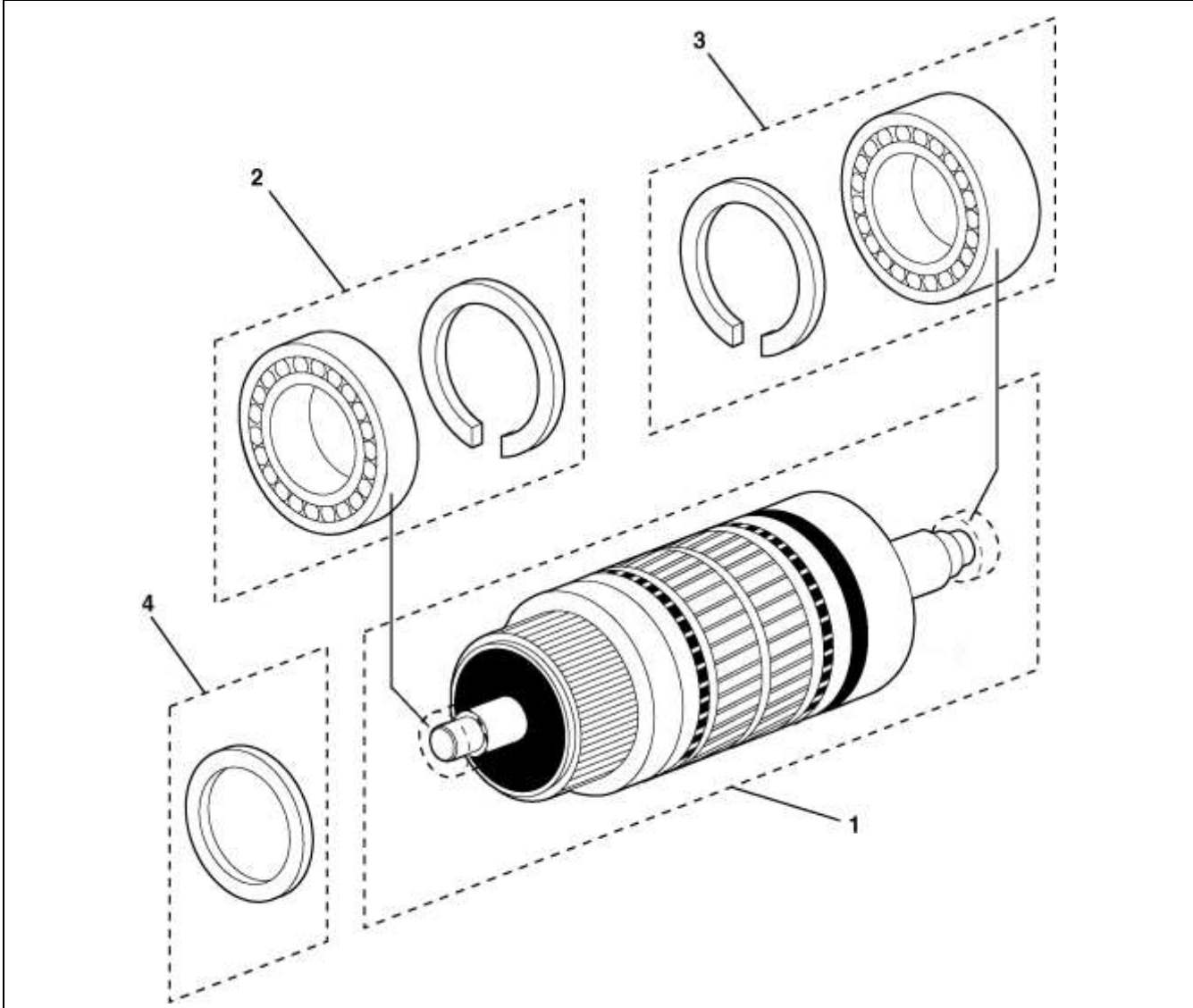


VINTAGE	
W/O	Y 01

REF. No.	PART No.	DESCRIPTION
1	221DJ1	Coils, Field, Set of 8
2	219AK1	Coils, Interpole, Set of 8
3	355AW1	Pole Piece, Field Coil
4	94AG1	Spring, Field Coil
5	94AD5	Spring, Interpole Coil
6	255AF5	Shim, 0.03 in., Steel, for Interpole Coil
7	255AF6	Shim, 0.032 in., Brass, for Interpole Coil

# Armature Shaft Bearings & Armature Coils

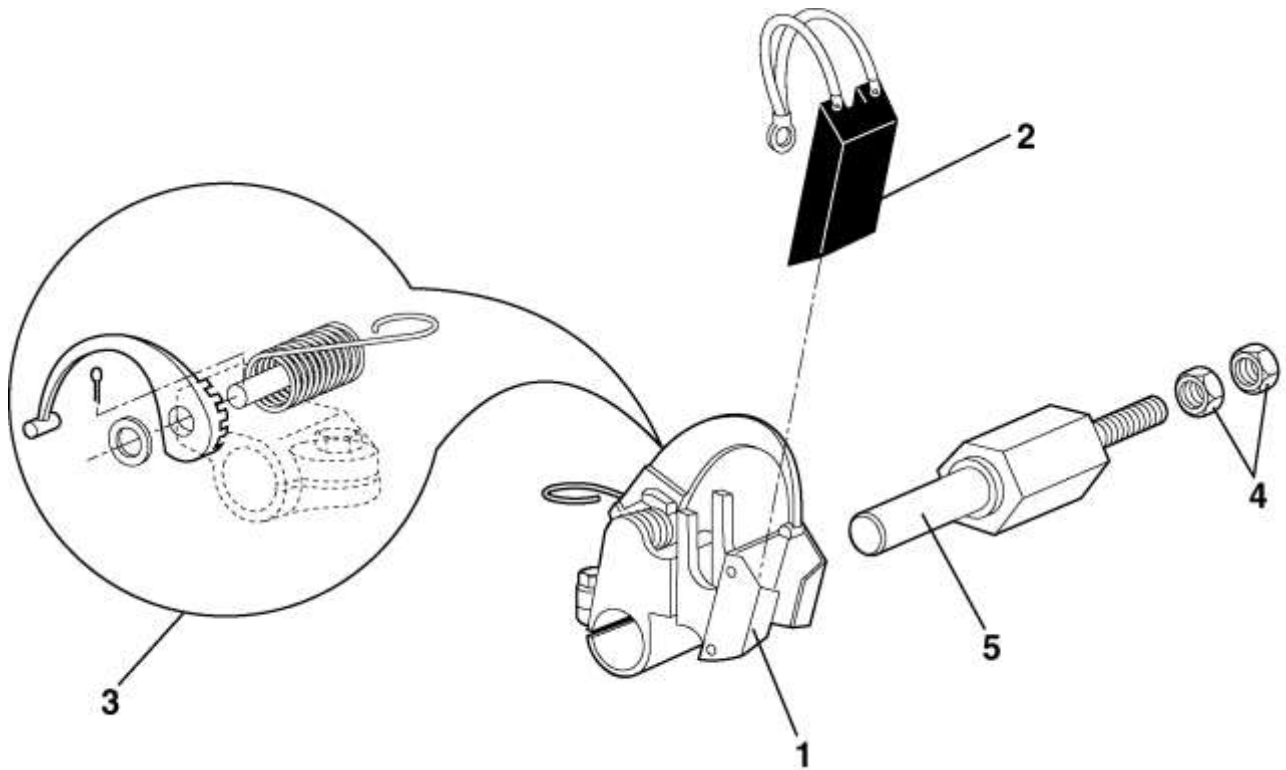
**06-A7126A**



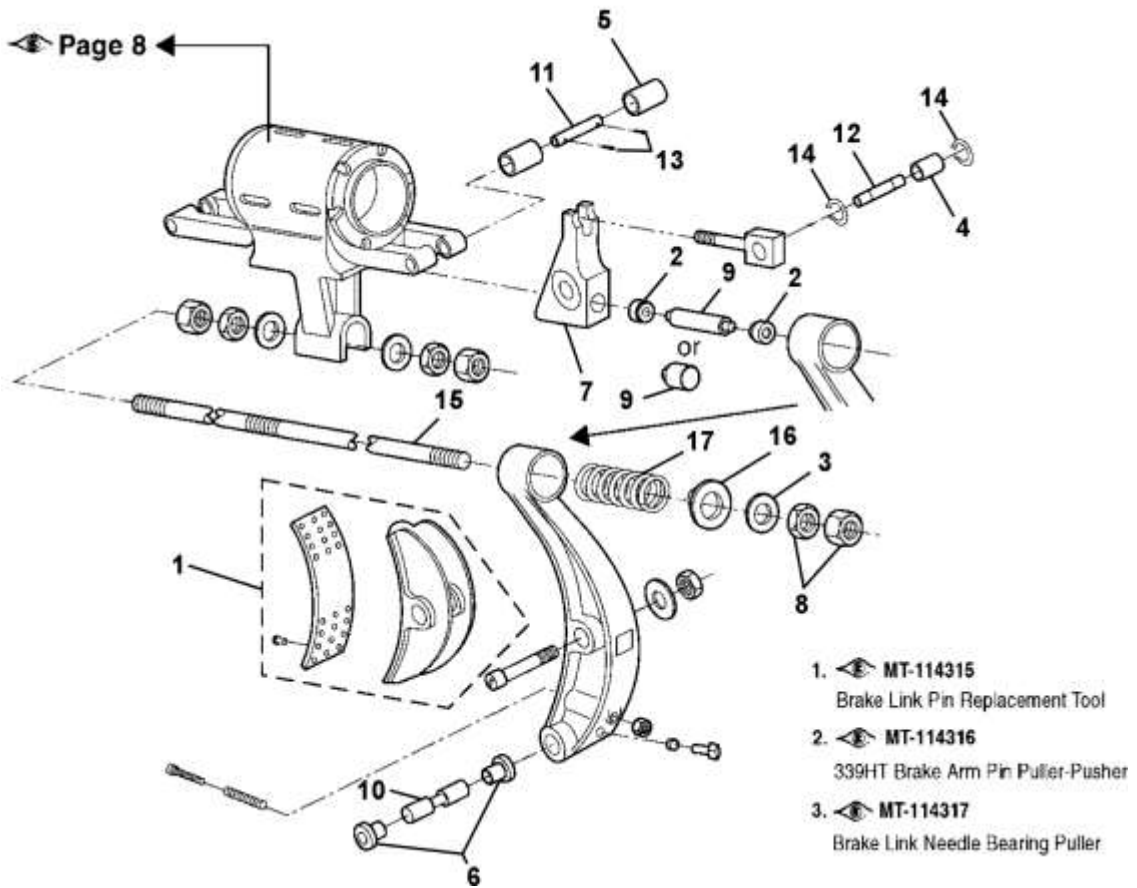
<b>VINTAGE</b>	
<b>W/O</b>	<b>Y 01</b>

<b>REF. No.</b>	<b>PART No.</b>	<b>DESCRIPTION</b>
1	A7126A303	Assembly, Armature—Contact OSC Spare Lending
2*	---	Kit, Bearing, Commutator End <small>ORDER</small> : (1) each: 209G10 Bearing, 376FH2 Gasket, 376J33 Gasket, & 488B18 Felt Seal
3*	---	Kit, Bearing, Sheave End <small>ORDER</small> : (1) each: 209G11 Bearing, 376FH1 Gasket, 376J34 Gasket, & 488B19 Felt Seal
4	488B20	Seal, Felt, Tacho Generator Extension Shaft (Commutator End)

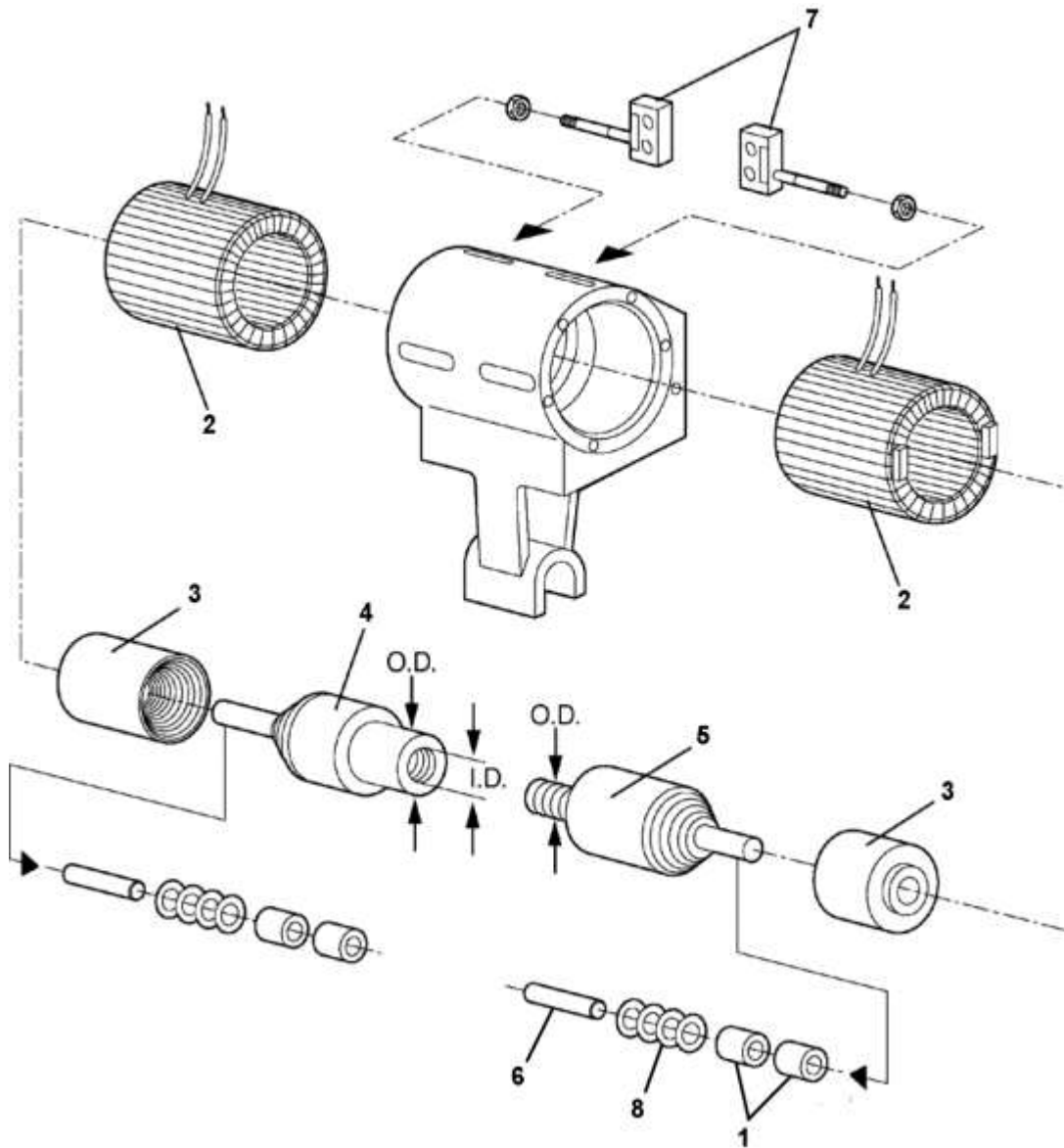
\* The kits are not lined up. Order all the quantities of parts listed for each kit.



REF. No.	VINTAGE		DESCRIPTION
	W/O	Y 01	
REF. No.	PART No.		DESCRIPTION
1	6134H3		Assembly, Brush Holder
2	240T6	240T10 AAA240AR207	Brush
3	2700CAR19		Kit, Arm: Spring + Arm + Washer + Cotter Pin
4	---		Nut, Brass, Hex 5/8-11
5	474AA2		Stem, Brush



		<b>VINTAGE</b>		
		<b>W/O</b>	<b>Y 01</b>	
<b>REF. No.</b>	<b>PART No.</b>		<b>DESCRIPTION</b>	
1	415AF2		Assembly, Brake Shoe w/Lining	
2	---	AAA209AV1	Bearing, Spherical	
3	207BG1		Bearing, Spring Seat	
4	209A11		Bearing, Upper Outer Brake Arm (2)	
5	209A12		Bearing, Upper Inner Brake Arm (2)	
6	335H41		Bushing (2)	
7	430DY1	430DY2	Link, Upper Lever	
8	---		Nut, Spring Adjusting, 2-4.5 Hex	
9	81CN2 81CY2	AAA494LL1	Pin, Brake	
10	77GB9		Pin, Lower Brake Arm (1)	
11	82A70		Pin, Upper Inner Brake Arm (1)	
12	82AP1		Pin, Upper Outer Brake Arm (1)	
13	---		Pin, Cotter, 5/16 x 3 (2)	
14	172DE13		Ring, Snap (2)	
15	98EE1		Rod	
16	133BH1		Seat, Spring	
17	90ZD1		Spring	

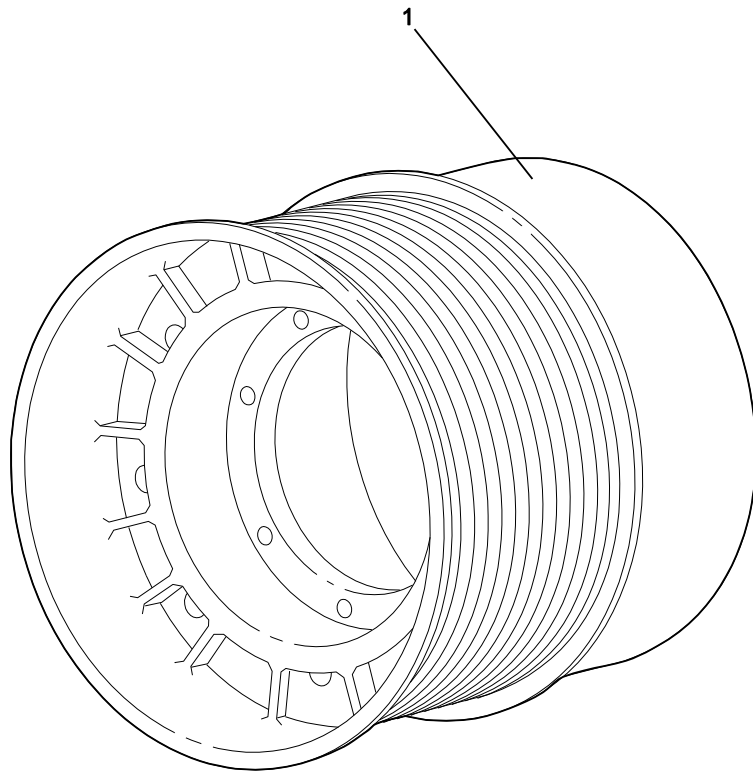


		VINTAGE		DESCRIPTION
		W/O	Y 01	
REF. No.	PART No.			
1	212T5	Bushing (2 per side)		
2	222FM1	Coil		
3	400FM2	Core, Brake, Female		
4	400FN2	Core, Brake, Male, 2 in. $\varnothing$ , w/External Thread		
5	400FP2	Core, Brake, Male, 3.5 in. $\varnothing$ , 2 in. $\varnothing$ w/Internal Thread		
6	A494HN2	Shaft		
7	177AP1	Switch, Brake		
8	128AF58	Washer, Brass (4 per side)		

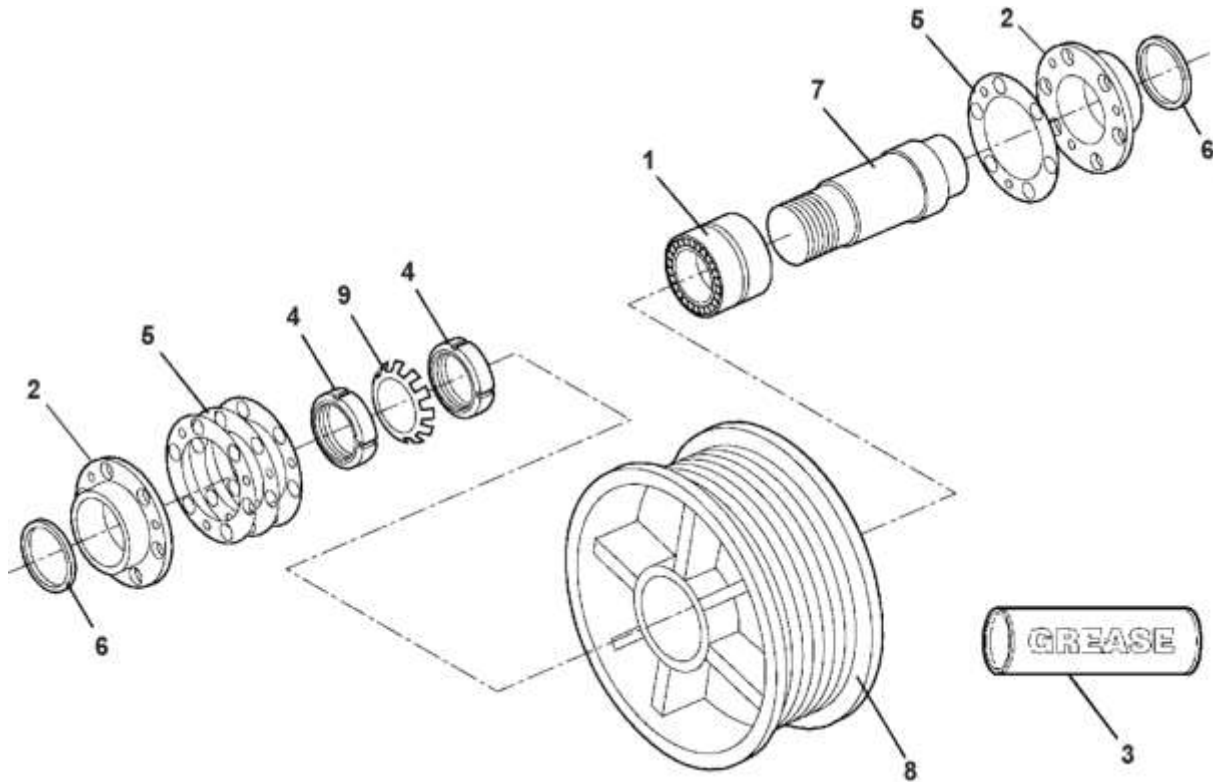


# Drive Sheave

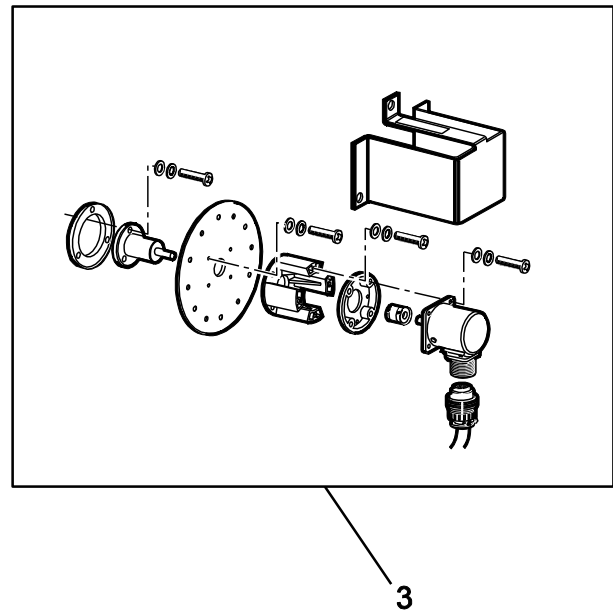
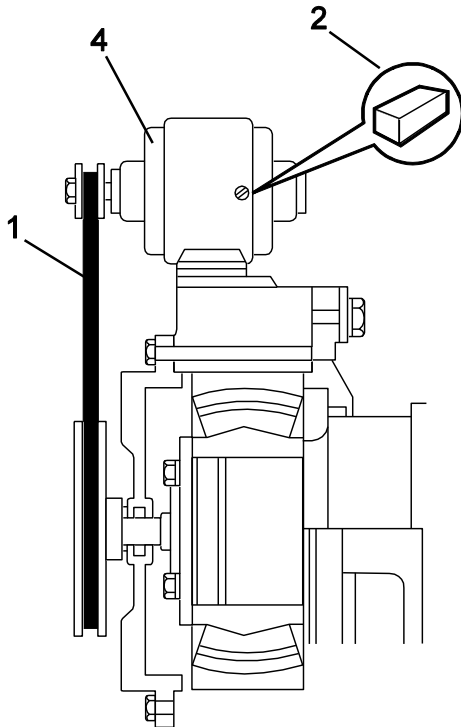
**06-A7126A**




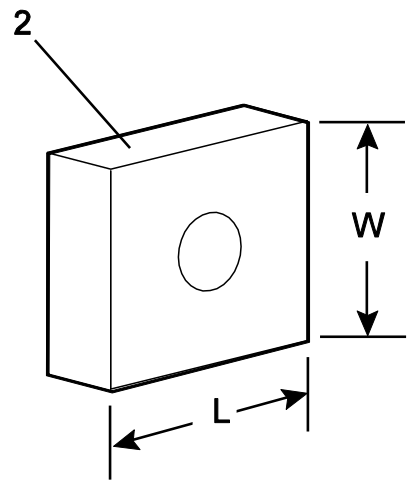
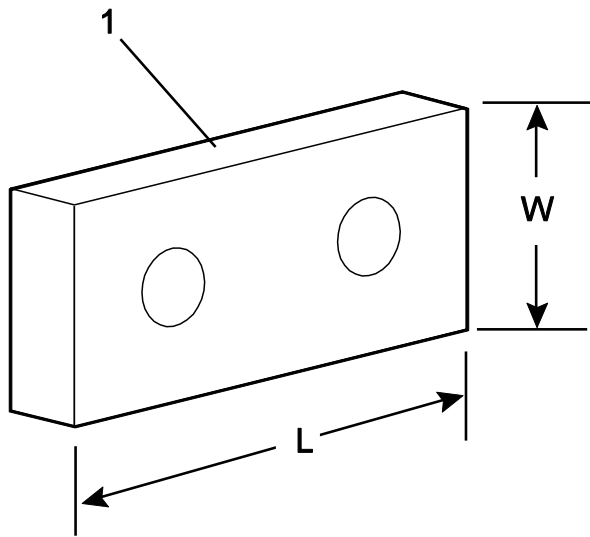
REF. NO.	VINTAGE		DESCRIPTION	ROPES		GROOVES
	W/O	Y01		No.	Ø	
1	PART or ML		Sheave, Drive, 46 in. Ø	No.	Ø	No.
	261P4	A261P4		7	7/8 in.	14
	261P3	A261P3		8	3/4 in.	16
	261P1	A261P1		8	7/8 in.	16
	261P2	A261P2		8	13/16 in.	16
	---	1-262P1		6	7/8 in.	12



REF. NO.	VINTAGE		DESCRIPTION	ROPES		GROOVES No.
	W/O	Y01		No.	Ø	
1	209AA1		Bearing, Roller	---	---	---
2	346AHH1		Cover	---	---	---
3	VP-420240		Grease #12, 14 oz. Tube	---	---	---
4	72BV19		Nut	---	---	---
5	255HB68		Shim (Order 14)	---	---	---
6	33D27		Seal, Oil	---	---	---
7	495CX3		Shaft	---	---	---
8	262AA4	A262AA4	Sheave, Secondary, 46 in. Ø	7	7/8 in.	14
	262AA3	A262AA3		8	3/4 in.	16
	262AA1	A262AA1		8	7/8 in.	16
	262AA2	A262AA2		8	13/16 in.	16
	---	1-262AA1		6	7/8 in.	12
9	130AA19		Washer, Tabbed	---	---	---



REF. NO.	VINTAGE		DESCRIPTION
	W/O	Y01	
	PART or ML		
1	297R1	---	Belt, for Tacho Generator
2	186207	---	Brush, for Tacho Generator
3	---	---	Encoder, Type AAA21430T  SPL 06-AAA21430E
4	7093A2	---	Tachometer Generator



REF. NO.	VINTAGE		DESCRIPTION
	W/O	Y01	
REF. NO.	PART or ML		DESCRIPTION
1	310JJ1		Block, Sound Isolation, 6 in. L x 3 in. W, with (2) 1 in. $\varnothing$ Holes
2	310JJ2		Block, Sound Isolation, 3 in. L x 3 in. W, with (1) 1 in. $\varnothing$ Hole