


# Gearless Machine D25


## Spare Parts Leaflet

### 06-AAA20220A

January 27, 2021 / Page 1 of 7



**Otis**  
A United Technologies Company



LR35786  
C US

D25 GEARLESS ELEVATOR TRACTION MACHINE

MACHINE ASSEMBLY: AAA20220A  
 BRAKE ASSEMBLY: AAA20236A  
 STATOR ASSEMBLY: ABA20220C

\_\_\_\_\_ kW                      8 POLE                      3 PHASE

\_\_\_ VOLTS FL    \_\_\_ Hz    \_\_\_ RPM    \_\_\_ AMPS FL

INS. CLASS F    45° C AMB    TEMP RISE 35K

240 STARTS/hr    AND 40 %ED    60 MINUTE DUTY

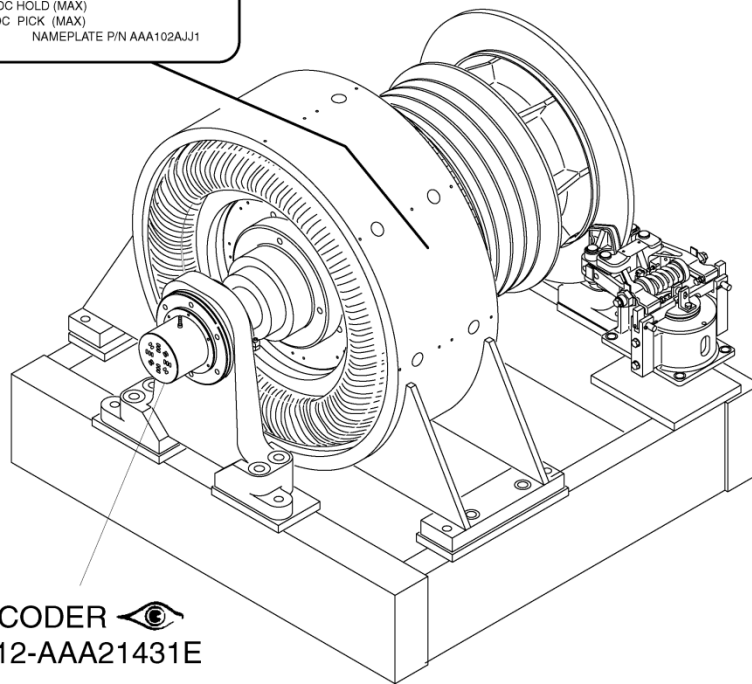
WEIGHT: 6100 kg                      MFG DATE: \_\_\_\_\_

CONTRACT NO. \_\_\_\_\_                      SERIAL NO. \_\_\_\_\_

INVERTER DUTY MOTOR  
 SHEAVE END BEARING NO. 209G16  
 OPP. END BEARING NO. 209G15    06 R-A-20220A

BRAKE RATING PER COIL  
 CURRENTS: 2.3 AMPS DC HOLD (MAX)  
 3.6 AMPS DC PICK (MAX)

MADE IN USA                      NAMEPLATE P/N AAA102AJJ1



ENCODER   
SPL 12-AAA21431E

# OTIS

This document does not contain any technical data subject to EAR or ITAR

SERVICE ENGINEERING  
 Otis Elevator Company  
 Bloomfield, Connecticut USA

Unpublished Work—© Otis Elevator Co.; 2021

**Leaflet Description**

This SPL lists the LRUs for the D25 AC gearless machine.

**Leaflet Revisions**

<b>Date Revised</b>	<b>Subject Matter Expert</b>	<b>Reason for Revision</b>
November 1, 1995	Jeffrey S. Costley, Technical Writer	New SPL
July 3, 2013	Val Sheynkman	Bring SPL into new SPL template; update page 8
November 9, 2016	Gary Mendrala	Added a NOTE on p. 5
January 27, 2021	Gary Mendrala	Added ISO pad, bushing, and shim on p. 3

**Related Drawings**

<b>Drawing No.</b>	<b>Title</b>	<b>Drawing No.</b>	<b>Title</b>
AAA20220A	D25 Machine Assembly	AAA20236A	Assembly Disc Brake D25 M/C
---	---	---	---

**Related Documents**

<b>Document ID</b>	<b>Title</b>
OMM 6.0-A	Machines and Brakes

**Subject Matter Expert**

<b>Name</b>	<b>Department</b>
Gary Mendrala	OSC Service Engineering

**About Spare Parts Leaflets...**

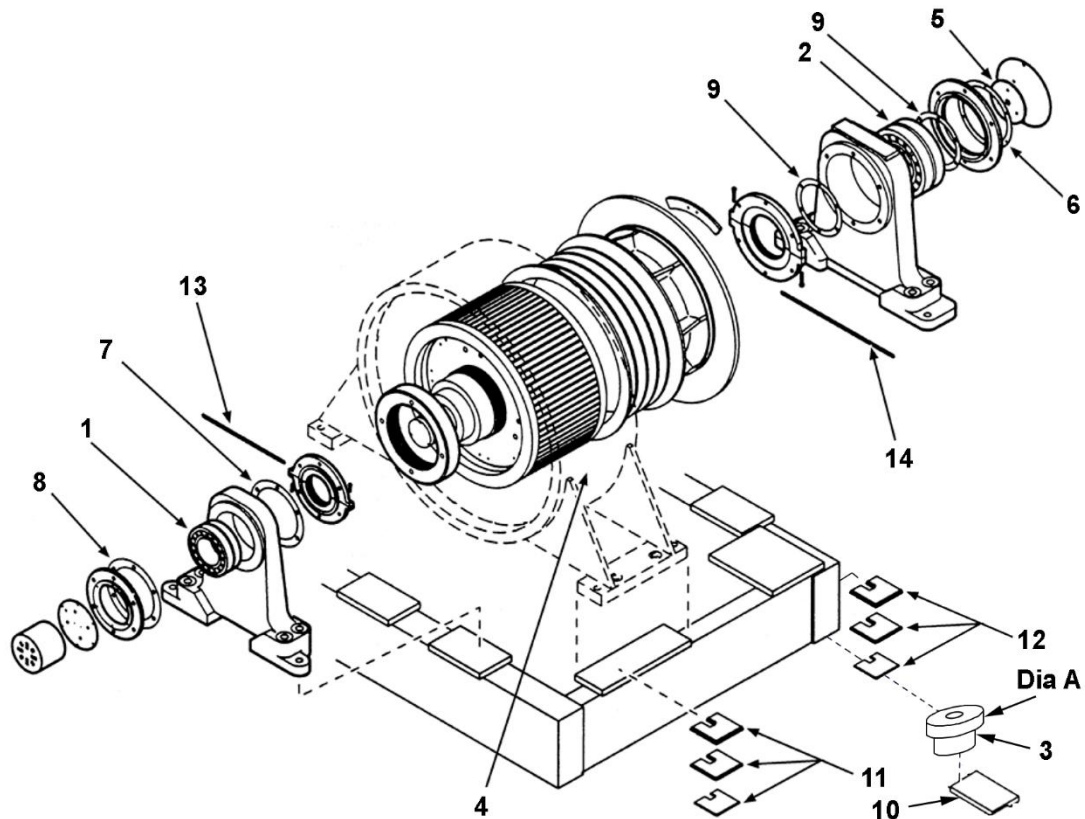
This document lists the lowest replaceable units (LRUs) for the standard version of the product. The LRUs are chosen by a team of Otis associates representing engineering and manufacturing.

While goal of this document is to make parts identification as easy as possible, the document cannot be all-inclusive. Elevator and escalator contracts classified as "special" or "custom" are not addressed here. For such contracts, please refer to specified information, the contract folder, TIPs, Field Education Articles, Construction Letters, etc. for further information.

If you have any suggestions about this document, please contact the subject matter expert listed on this page.

# D25 Machine Assembly

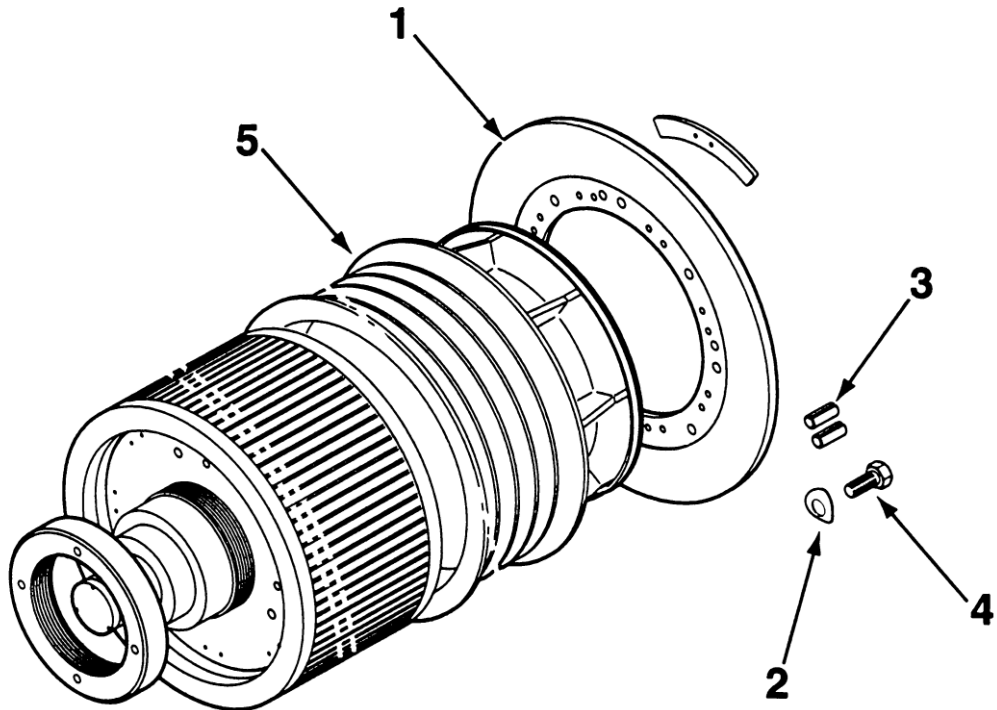
**06-AAA20220A**










AAA20220A		
REF. No.	PART No.	DESCRIPTION
1	209G15	Bearing, Front, 130 mm $\varnothing$ , 230 mm $\varnothing$
2	209G16	Bearing, Rear, 180 mm $\varnothing$ , 320 mm $\varnothing$
3	344AD2	Bushing, Dia. A = 1.75 in.
	344AD3	Bushing, Dia. A = 2.00 in.
4	102FC1	Data Plate, Lubrication (general location, part not shown)
5	353BC17	Disk, 7.95 in. $\varnothing$
6	376H9	Gasket, Neoprene Sponge, 10.5 in. $\varnothing$ , 12.5 in. $\varnothing$ , (Qty. 6), 5/16 in. Holes, 0.125 in. Thickness
7	376T20	Gasket, Paper, 9.125 in. $\varnothing$ , 12.3215 in. $\varnothing$ , 0.005 in. Thickness
8	376T21	Gasket, Paper, 9.125 in. $\varnothing$ , 12.6875 in. $\varnothing$ , 0.005 in. Thickness
9	376T25	Gasket, Plastic, 12.6562 in. $\varnothing$ , 16.4375 in. $\varnothing$ , 0.003 in. Thickness
10	310BE1	Pad, ISO, 6 x 6 Non-Seismic
	310BE2	Pad, ISO, 3 x 6 Seismic
11	255AB158	Shim, Steel, 0.0077 in. Thick (qty. 12)
	255AB72	Shim, Steel, 0.0149 in. Thick (qty. 20)
	255AB73	Shim, Steel, 0.0299 in. Thick (qty. 8)
12	255HA20	Shim, 0.120 in. Thick
	255HA21	Shim, 0.033 in. Thick
	255HA22	Shim, 0.015 in. Thick
13	488B6	Wick, Felt, 19.0625 in. L
14	488B7	Wick, Felt, 26.125 in. L

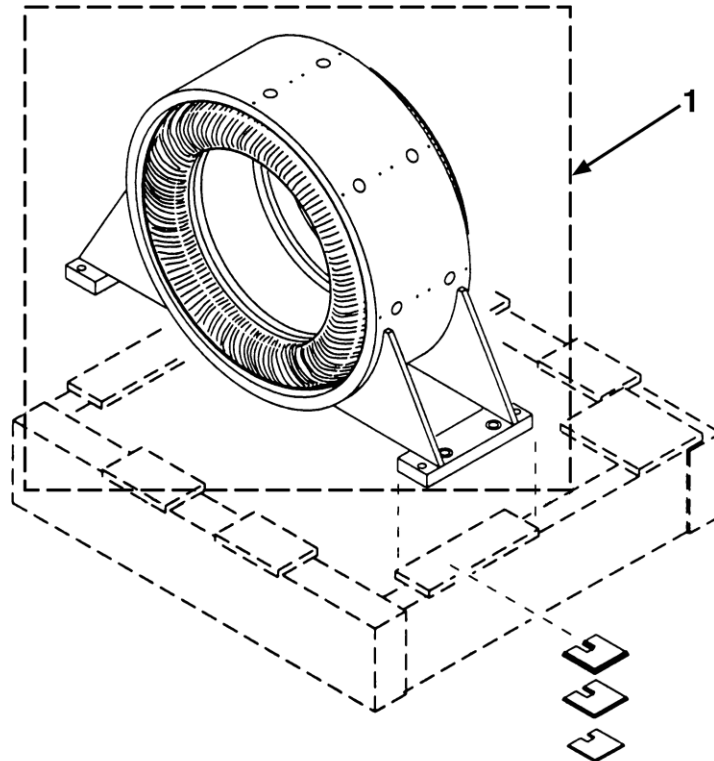
# AAA20220B Rotor Assembly

**06-AAA20220A**



AAA20220A		
REF. No.	PART No.	DESCRIPTION
1	AAA353CX1	Disk, Brake, 960 mm 
2	DIN128A-M16-430HV-Z	Lockwasher, Curved Spring, M16
3	ISO8752-16X40Z	Pin, Straight, Spring-Type, Slotted, 16 mm x 40 mm
4	ISO4017M16X40-8.8Z	Screw, Hex Head, M24 x 100 mm (qty. 8 needed)
5	AAA261AA1	Sheave,  (qty. 4) 5/8 in. Ropes
	AAA261AA2	Sheave,  (qty. 5) 5/8 in. Ropes
	AAA261AA6	Sheave,  (qty. 6) 1/2 in. Ropes
	AAA261AA3	Sheave,  (qty. 6) 5/8 in. Ropes
	AAA261AA4	Sheave,  (qty. 7) 5/8 in. Ropes
	AAA261AA5	Sheave,  (qty. 8) 5/8 in. Ropes

**NOTE:** Stator assembly does not include stator frame.

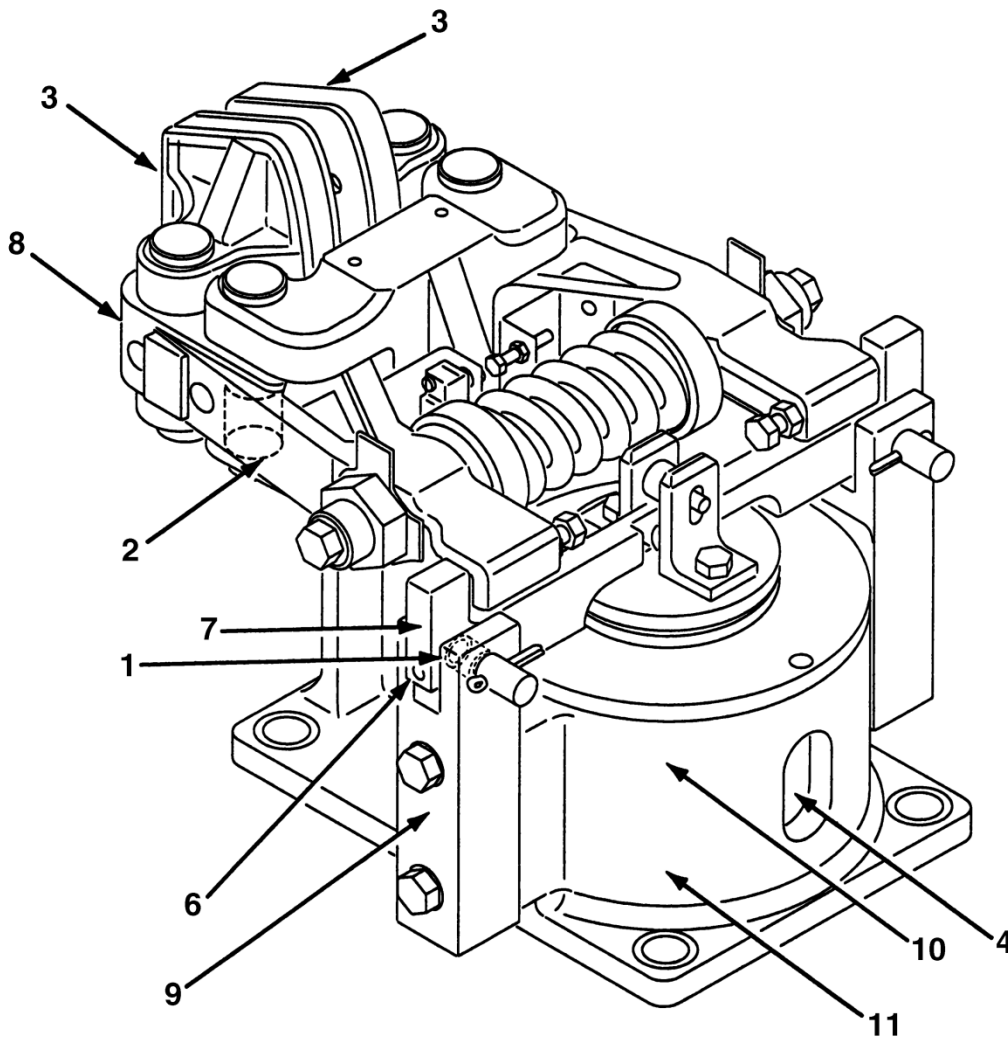


AAA20220A		
REF. No.	PART No.	DESCRIPTION
1*	AAA20220C2	Assembly, Stator, <b>W</b> → Meidensha Drive, 3.5 Meter/Sec., 330/380 Vr/Vp, 5.8 f Hz.
	AAA20220C3	Assembly, Stator, <b>W</b> → Meidensha Drive, 4 Meter/Sec., 330/380 Vr/Vp, 6.7 f Hz.
	AAA20220C4	Assembly, Stator, <b>W</b> → Meidensha Drive, 5 Meter/Sec., 330/380 Vr/Vp 8.3 f Hz.
	AAA20220C5	Assembly, Stator, <b>W</b> → Meidensha Drive, 6 Meter/Sec., 330/380 Vr/Vp, 10.0 f Hz.
	AAA20220C6	Assembly, Stator, <b>W</b> → Meidensha Drive, 7 Meter/Sec., 330/380 Vr/Vp, 11.7 f Hz.
	AAA20220C1	Assembly, Stator, <b>W</b> → Otis Drive, 6 Meter/Sec., 360/425 Vr/Vp, 10.0 f Hz.

\* Reference number 1 is an item that would be refurbished. It is not cost effective to fabricate as new. Contact OSC or another competent motor rebuilding facility for refurbishment.

# AAA20236A Brake Assembly

06-AAA20220A



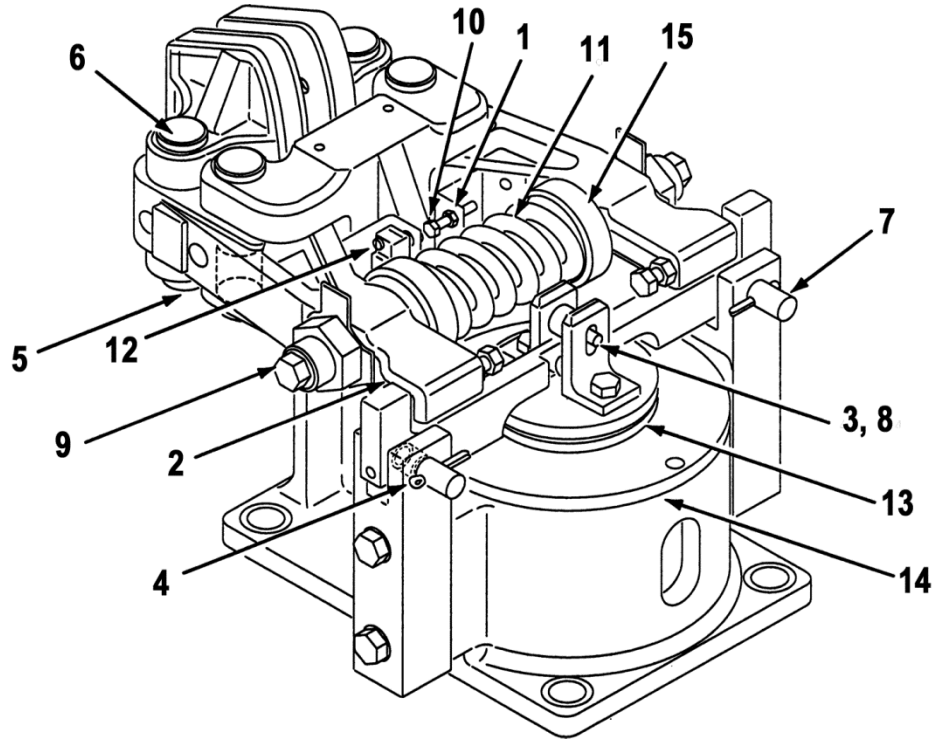
AAA20220A		
REF. No.	PART No.	DESCRIPTION
1	209AF6	Bearing, Needle, Roller, 26 mm $\varnothing$ (part of ref. 7)
2	209AF7	Bearing, Needle, Roller, 37 mm $\varnothing$ (part of ref. 8)
3	AAA415AJ2	Brake Shoe
4	AAA222FS2	Coil, Magnet, Brake, 2650 Turns, 21 $\Omega$ (not shown)
5	435C1	Fitting, Grease, (part of ref. 10, part not shown)
6	AAA435AX1	Fitting, Grease
7	AAA288VL2	Lever Assembly, Brake
8	AAA288TS2	Lever; Brake Arm
9	AAA338AY1	Lever, Clevis
10	AAA400GL2	Magnet Core, Female (part not shown)
11	AAA400GK2	Magnet Core, Male (part not shown)




Continued on next page

**NOTE:** Refer to OMM 6.0-A for brake maintenance. For pivot pins, use grease p/n VP-420241.

# AAA20236A Brake Assembly

06-AAA20220A



AAA20220A		
REF. No.	PART No.	DESCRIPTION
1	ISO4035M6-04-Z	Nut, Jamb, M6 (for activating screw to brake switch)
2*	AAA81GH2	Pin Assembly, with two 'O' Rings (part not shown)
3	ISO1234-3.2X16Z	Pin, Cotter, 3,2 x 16 mm L
4	ISO1234-5X40Z	Pin, Cotter, 8 x 40 mm L
5	ISO1234-8X50Z	Pin, Cotter, 8 x 50 mm L
6	AAA81EN1	Pin, 152 mm L,  Disc Brake Assembly
7	AAA81EP1	Pin, Lever, 90 mm L
8	AAA81ER1	Pin, Solenoid, 56 mm L
9	AAA98FT1	Rod, Spring Adjusting, 165 mm L
10	ISO4017M6X40-8.8B	Screw, Hex Head, M46 x 40 mm L (for Brake Switch)
11	AAA90DN1	Spring, Compression, 165 mm L, 8 Active Coils (approx.)
12	AAA635L1	Switch, Pushbutton, for Brake, 125 V, 15A AC, Single Pole, Double Throw
*	AAA20236F3	Tool, Manual, Brake Release (Not Shown)
13	128AG53	Washer
14	AAA131DW1	Washer, Felt, 195 mm  , for Brake Coil (Part Not Shown)
15	AAA133BN1	Washer, Spring Seat, 88 mm 

\* Part not shown.