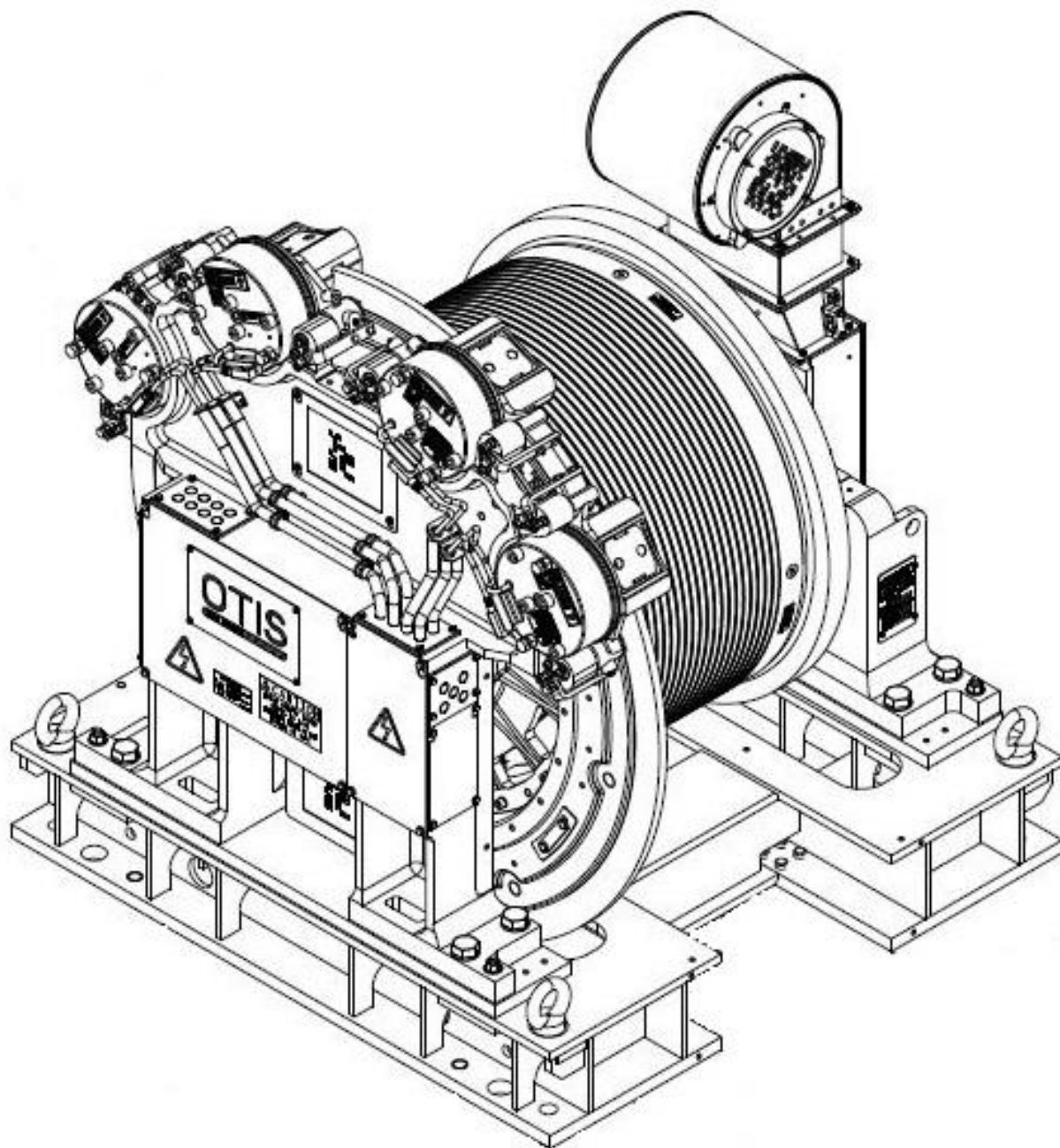


ELEVATOR MACHINE
SkyMotion 260 (25T)

Spare Parts Leaflet
06-AAA20220DF



OTIS

This document does not contain any
technical data subject to EAR or ITAR

SERVICE ENGINEERING
Otis Elevator Company
Bloomfield, Connecticut USA

Unpublished Work—© Otis Elevator Co.; 2021

ELEVATOR MACHINE

SkyMotion 260 (25T)

Spare Parts Leaflet

06-AAA20220DF

This leaflet provides spare parts information for the PM gearless machine, type AAA20220DF (also known as SkyMotion 260 or 25T machine). AAA20220DF covers duty loads up to 3600kg with 1:1 roping and elevator speeds up to 10 m/s.

Leaflet Revisions

Date	Subject Matter Expert	Reason for Revision
Nov. 11, 2016	James Hubbard	Original document
Jan. 23, 2018	James Hubbard	Descriptions updated for clarity, parts added.
Mar. 2, 2018	James Hubbard	Parts added
Apr. 18, 2018	Cole Murphy	Update made to blower filter part number
Jun. 25, 2018	Cole Murphy	Changed part numbers for brake release tool and carpet wiper
Sept. 27, 2019	James Hubbard	Added traction sheave liners, Removed sheaves with undercut grooves since these are obsolete and never used - p. 16
Mar. 15, 2021	James Hubbard	TRACTION SHEAVE - Added traction sheave liner groove kit PN. SECONDARY SHEAVE ASSEMBLY - Revised secondary sheave PN's due to redesign
Sept. 17, 2021	James Hubbard	BRAKE ASSY – Added brake switch lever, Revised Note 1

Related Drawings

Drawing No.	Title	Drawing No.	Title
AAA20220DF	MACHINE ASSEMBLY	AAA29509AN	BRAKE
AAA20257D	MOTOR	AAA20700W	SECONDARY SHEAVE ASSEMBLY
AAA20850H AAA20850J	ISOLATION ARRT. ISO. ARRT (Seismic)	AAA29509AL	GUARDING

Related Documents

Document ID	Title
DO-O309CY_ODF	ORDER DATA SHEET FOR SKYMOTION 260 MACHINE
AAA20220DF_BD	BASIC DATA FOR SKYMOTION 260 MACHINE

Subject Matter Expert

Name	Department
JAMES HUBBARD	OTIS ENGINEERING CENTER - FARMINGTON

About Spare Parts Leaflets

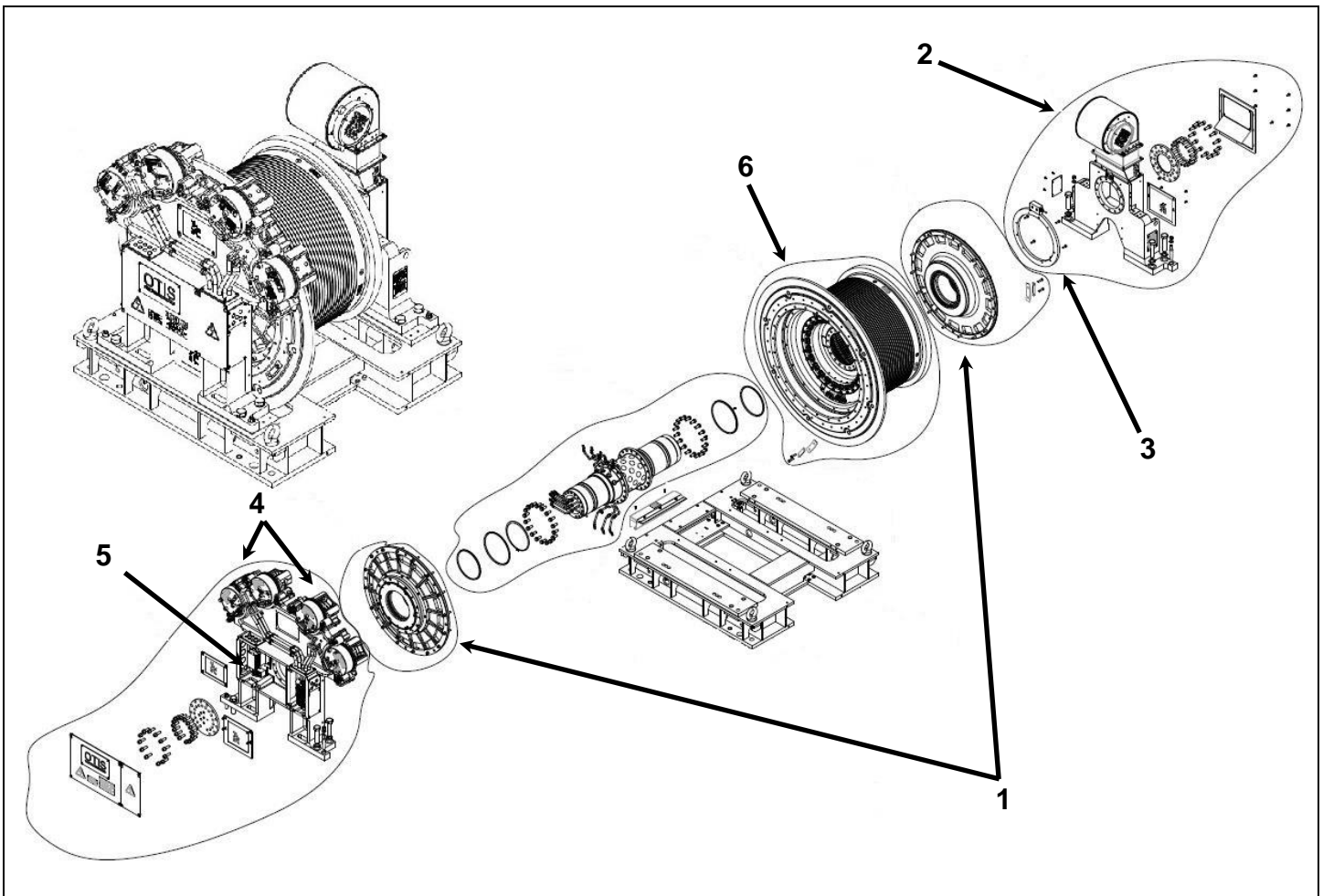
This document lists the lowest replaceable units (LRUs) for the standard version of the product. The LRUs are chosen by a team of Otis associates representing engineering and manufacturing.

While goal of this document is to make parts identification as easy as possible, the document cannot be all-inclusive. Elevator and escalator contracts classified as “special” or “custom” are not addressed here. For such contracts, please refer to specified information, the contract folder, TIPS, Field Education Articles, Construction Letters, etc. for further information.

If you have any suggestions about this document, please contact the subject matter expert listed on this page.

ELEVATOR MACHINE SkyMotion 260 (25T)

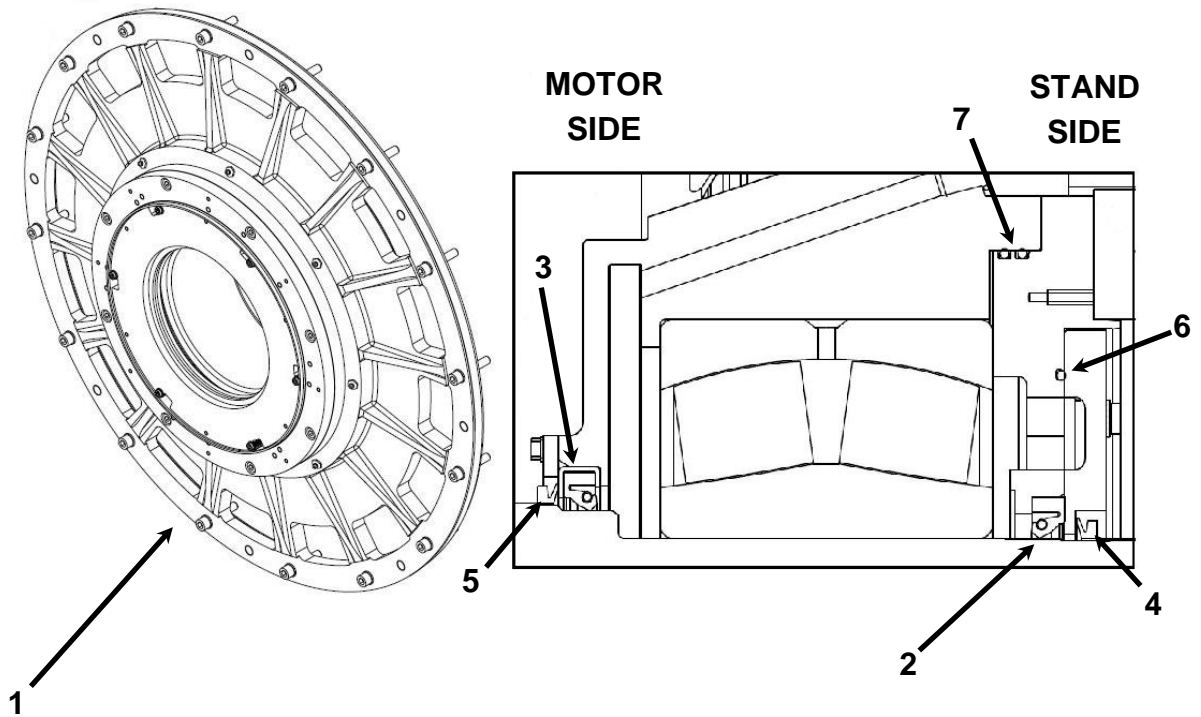
Spare Parts Leaflet
06-AAA20220DF



No.	DESCRIPTION
1	👁 BEARING CARTRIDGE ASSEMBLY DETAIL
2	👁 BLOWER ASSEMBLY DETAIL
3	👁 ENCODER ASSEMBLY DETAIL
4	👁 BRAKE ASSEMBLY DETAIL
5	👁 TERMINAL BOX ASSEMBLY DETAIL
6	👁 TRACTION SHEAVE ASSEMBLY DETAIL

ELEVATOR MACHINE SkyMotion 260 (25T)

Spare Parts Leaflet
06-AAA20220DF



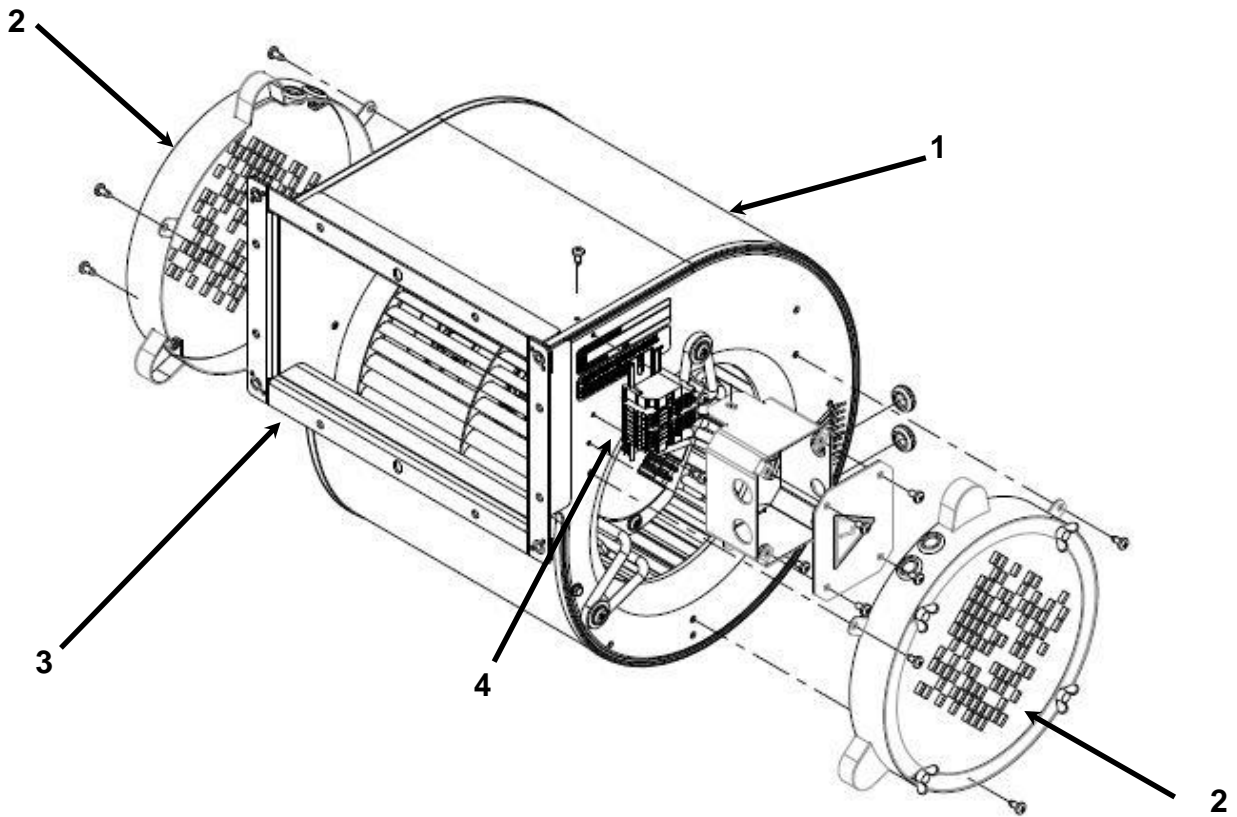
BEARING CARTRIDGE ASS'Y				
No.	PART No.	DESCRIPTION	QTY	USED FOR
1	AAA20220DC1	BEARING CARTRIDGE	1	AAA20220DF
2	AAA172WM1	SEAL, LIP	1	
3	AAA172WN1	SEAL, LIP	1	
4	AAA33BW1	SEAL, V-RING	1	
5	AAA33BW2	SEAL, V-RING	1	
6	AAA172WL2	RING, O-RING	1	
7	AAA172WL3	RING, O-RING	2	

NOTES:

1. BEARING LUBRICANT USED IN THE BEARING CARTRIDGE (ITEM 1) IS OTIS GREASE #12
2. IN CASE OF A DEFECTIVE BEARING OR LEAKING BEARING, THE ENTIRE BEARING CARTRIDGE (ITEM 1) MUST BE REPLACED. IT IS NOT POSSIBLE TO REPLACE THE BEARINGS ALONE.
3. REPLACEMENT OF THE SEALS OR O-RING (ITEMS 2-7) SHOULD ONLY BE ATTEMPTED IN THE UNUSUAL CASE OF OIL LEAKING WITH RELATIVELY NEW BEARINGS.

ELEVATOR MACHINE SkyMotion 260 (25T)

Spare Parts Leaflet
06-AAA20220DF



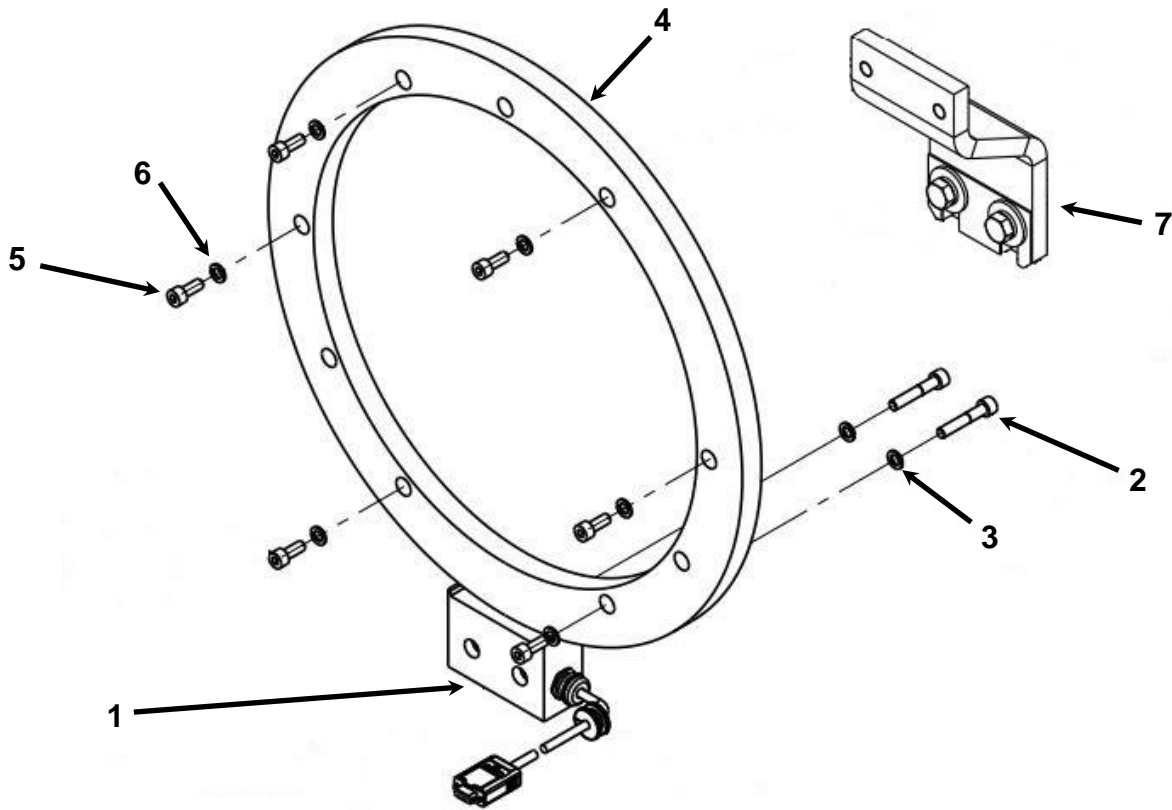
BLOWER ASS'Y				
No.	PART No.	DESCRIPTION	QTY	USED FOR
1	AAA29509X10	BLOWER	1	AAA29509X1
2	AAA737AD10	FILTER, BLOWER	2	
3	AAA376HV1	GASKET, BLOWER	1	
4	AAA21303EC5	TERMINAL BLOCK ASSY, BLOWER	1	

NOTE:

1. WHEN THE BLOWER (ITEM 1) IS REPLACED, IT IS RECOMMENDED TO REPLACE THE GASKET (ITEM 3) AT THE SAME TIME.

ELEVATOR MACHINE SkyMotion 260 (25T)

Spare Parts Leaflet
06-AAA20220DF



ENCODER ASS'Y

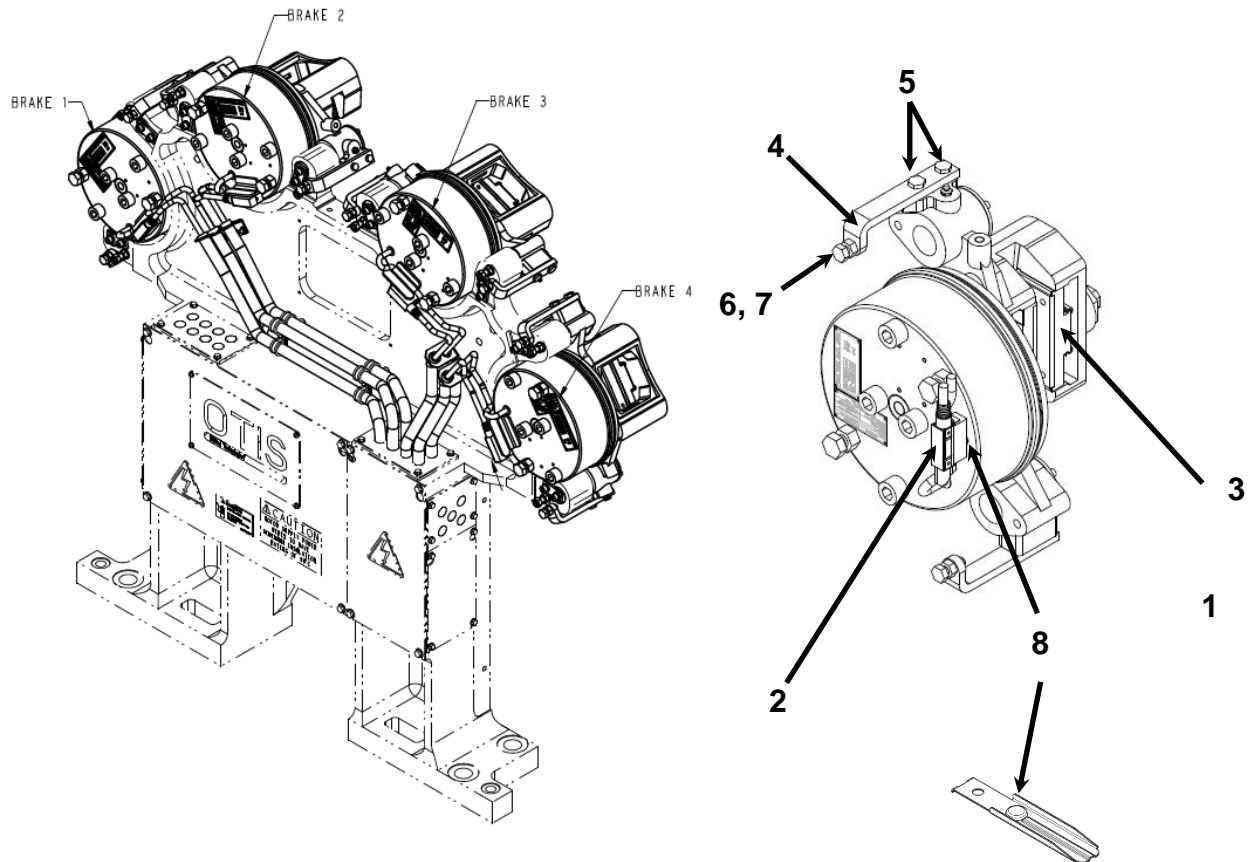
No.	PART No.	DESCRIPTION	QTY	USED FOR
1	AAA633AL3	SENSOR HEAD, ENCODER	1	AAA633AL1
2	ISO4762M8X40-8.8Z	M8 X 40 CAP SCREW	2	
3	DIN128A-M8-430HV-Z	M8 LOCK WASHER	2	
4	AAA633AL2	ENCODER WHEEL	1	
5	ISO4762M8X20 – 8.8Z	M8 X 20 CAP SCREW	6	
6	DIN128A-M8-430HV-Z	M8 LOCK WASHER	6	
7	AAA316KLR1	BRACKET ASSEMBLY	1	

NOTES:

1. THE ENCODER WHEEL SHOULD NOT NEED TO BE REPLACED UNLESS THERE IS OBVIOUS VISIBLE DAMAGE TO THE OUTER DIAMETER SURFACE.

ELEVATOR MACHINE SkyMotion 260 (25T)

Spare Parts Leaflet 06-AAA20220DF



BRAKE ASS'Y				
No.	PART No.	DESCRIPTION	QTY	USED FOR
1	AAA20236AD11	BRAKE CALIPER Position 1 and 3	1	AAA20220DF
	AAA20236AD12	BRAKE CALIPER Position 2 and 4	1	AAA20220DF
SEE NOTE 1	AAA102AYM1	LABEL, EMERGENCY BRAKE (ASME)	1	AAA20220DF
	AAA102AYN1	LABEL, BRAKE (ASME)	1	
	DAA102WF1	LABEL, BRAKE (GB)	1	
2	AAA177EX1	SWITCH ASSY	1	AAA20236AD1 AAA20236AD2
3	AAA415AY1	PAD KIT (2 PADS)	1	
4	AAA316HYB1	BRACKET (SEE NOTE 2)	1	
5	NON1241M8X25-8.8Z	M8 X 25 HEX HD SCREW	2	
6	AAA124JR1	ADJUSTMENT SCREW	1	
7	ISO8673M10X1-8-Z	NUT	1	
8	AAA287DL1	LEVER, BRAKE SWITCH	1	

NOTES:

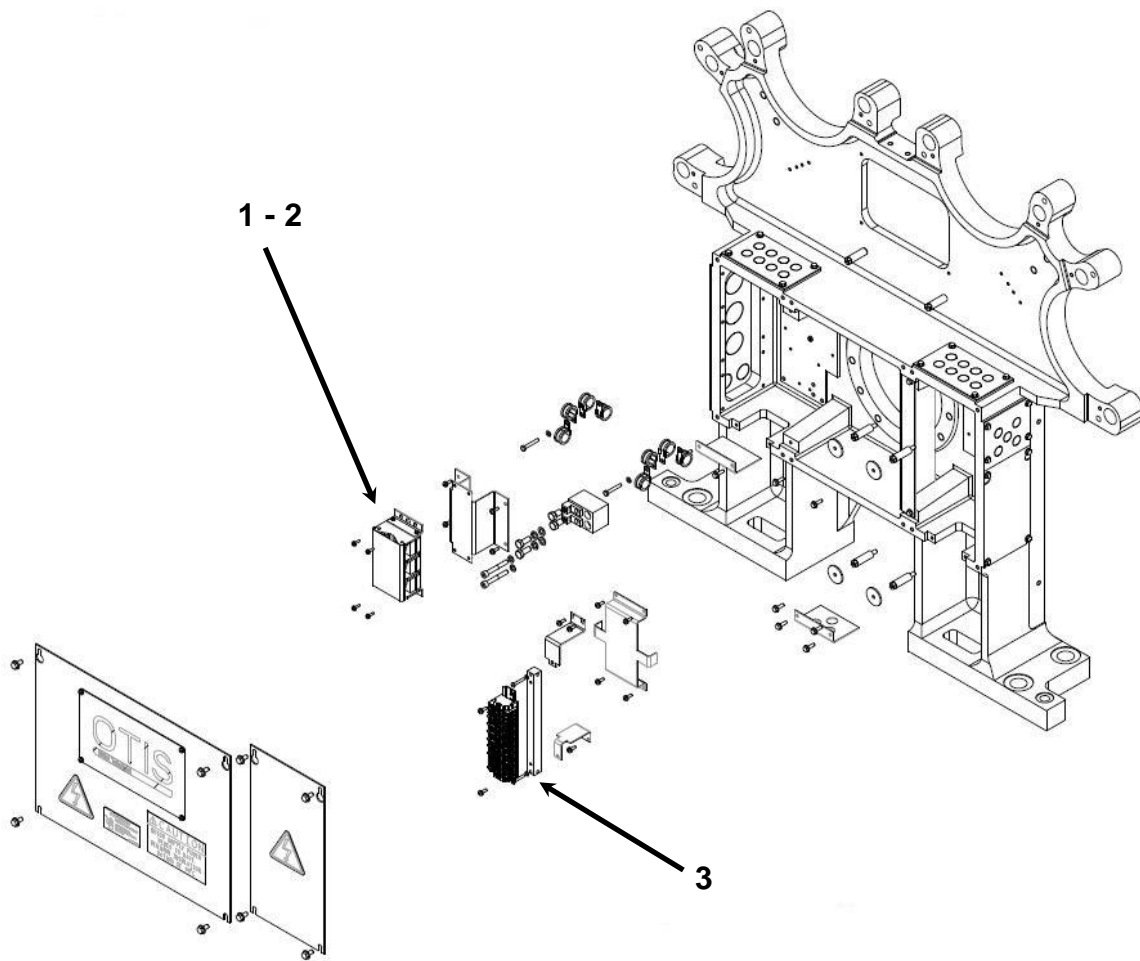
ELEVATOR MACHINE
SkyMotion 260 (25T)

Spare Parts Leaflet
06-AAA20220DF

1. IN CASE OF BRAKE CALIPER [ITEM 1] REPLACEMENT, THE EXISTING "EMERGENCY BRAKE" LABEL WHICH INCLUDE CONTRACT SPECIFIC INFORMATION MUST BE TRANSFERRED TO THE NEW BRAKE CALIPER
2. THE BRACKET SHOULD BE REPLACED AS AN ASSEMBLY INCLUDING ITEMS 4, 5, 6, AND 7.

ELEVATOR MACHINE SkyMotion 260 (25T)

Spare Parts Leaflet
06-AAA20220DF

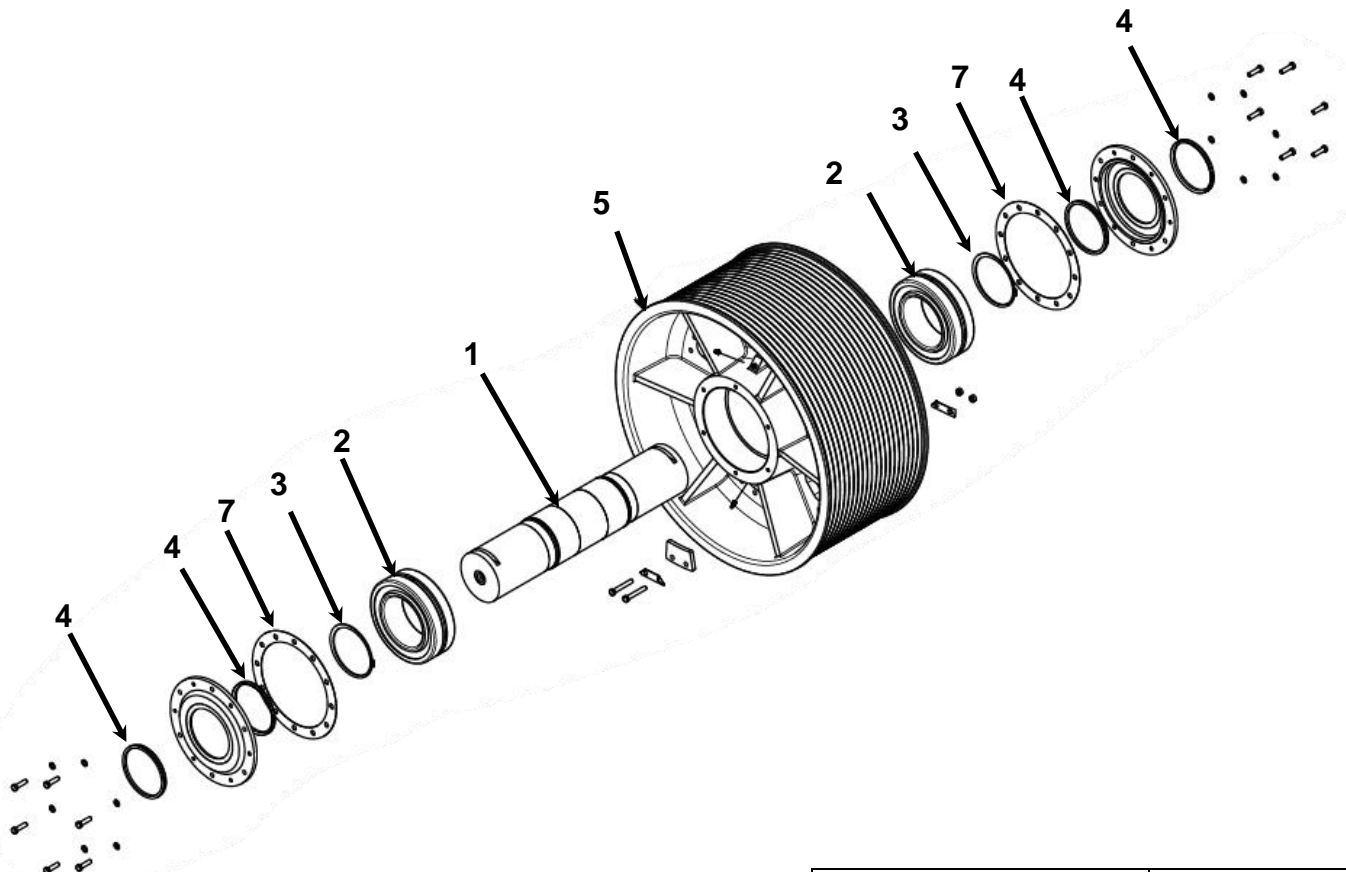
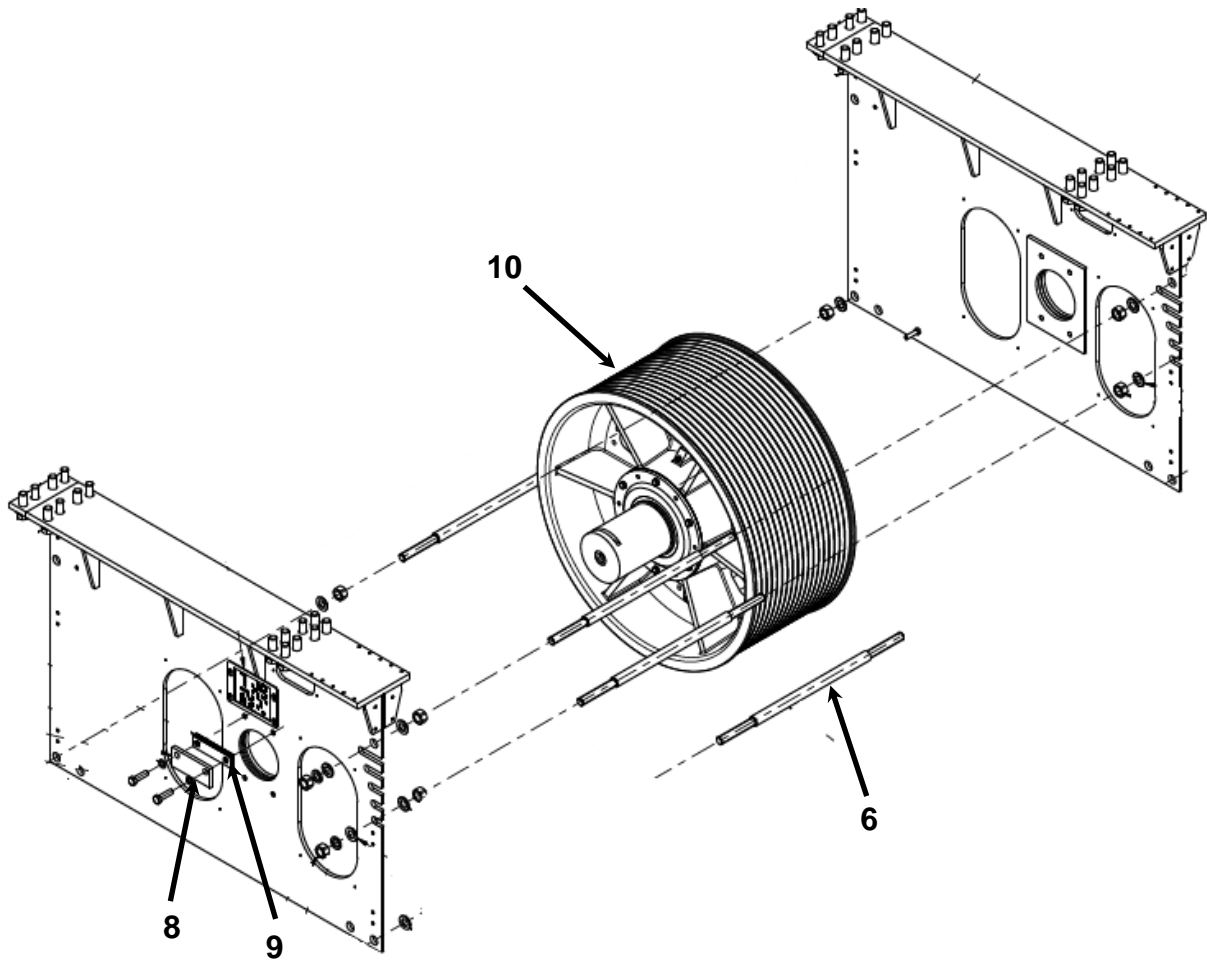


TERMINAL BOX ASS'Y

No.	PART No.	DESCRIPTION	QTY	USED FOR
1	AAA303GK1	TERMINAL BLOCK – MOTOR (Single Drive – 3 Phase)	1	AAA20220DG
	AAA124FD5	M4 X 16 SEMS SCREW	4	
2	AAA303GK2	TERMINAL BLOCK – MOTOR (Tandem Drive – 6 Phase)	1	
	AAA124FD5	M4 X 16 SEMS SCREW	4	
3	AAA21303FF1	TERMINAL BLOCK ASSEMBLY – SIGNALS	1	
	AAA124FD14	M5 X 16 SEMS SCREW	2	

ELEVATOR MACHINE SkyMotion 260 (25T)

Spare Parts Leaflet
06-AAA20220DF



ELEVATOR MACHINE

SkyMotion 260 (25T)

Spare Parts Leaflet
06-AAA20220DF

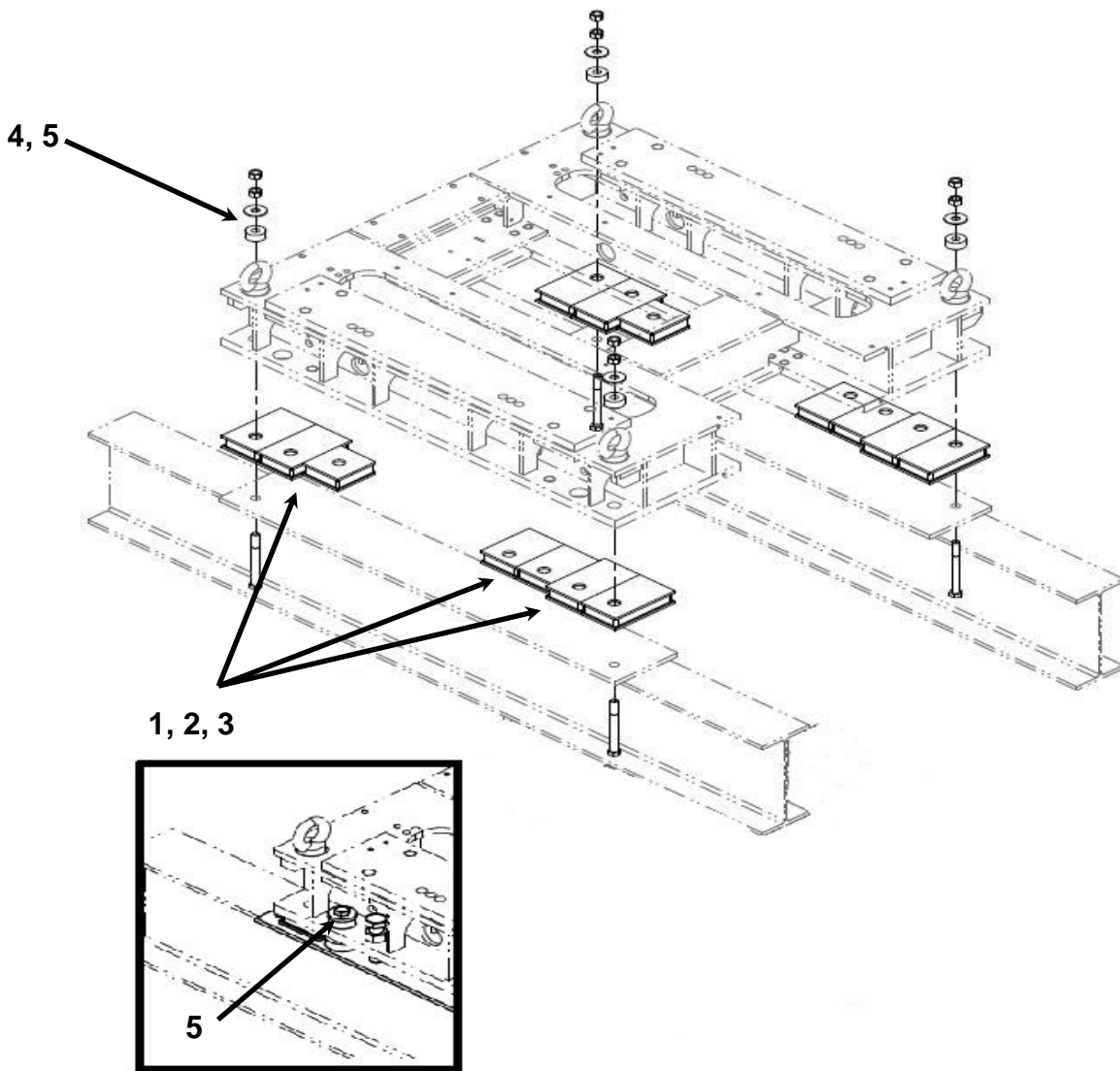
DEFLECTOR SHEAVE ASS'Y				
No.	PART No.	DESCRIPTION	QTY	USED FOR
1	AAA495GQ1	SHAFT	1	AAA20700W
2	AAA212AK2	BEARING, SPHERICAL	2	
3	DIN471N-170-440HV-B	Ø170 RETAINING RING (SHAFT)		
4	AAA33BG1	SEAL	2 (Per Side)	
5	AAA265HC1	SHEAVE (DWT 18MM ROPE, 18 GROOVES)	1	
	AAA265HC2	SHEAVE (DWT 16MM ROPE, 20 GROOVES)	1	
	AAA265HC3	SHEAVE (SWT 18MM ROPE, 12 GROOVES)	1	
6	AAA98QX1	ROD	1	
7	AAA376JN1	GASKET	2	
8	AAA192AT1	KEY	1	
9	AAA255NW1	SHIM	1	
10 (NOTE 1)	AAA20700W599	SHEAVE / SHAFT / BEARING ASS'Y (DWT 18MM ROPE, 18 GROOVES)	1	
	AAA20700W598	SHEAVE / SHAFT / BEARING ASS'Y (DWT 16MM ROPE, 18 GROOVES)	1	
	AAA20700W597	SHEAVE / SHAFT / BEARING ASS'Y (SWT 18MM ROPE, 12 GROOVES)	1	

NOTE:

- SECONDARY SHEAVE ASSEMBLIES PRODUCED BEFORE DECEMBER 2020: THE COMPLETE SHEAVE / SHAFT / BEARING ASSEMBLY MUST BE REPLACED IN CASE OF ISSUES WITH THE SHEAVE OR BEARINGS.**

ELEVATOR MACHINE SkyMotion 260 (25T)

Spare Parts Leaflet
06-AAA20220DF

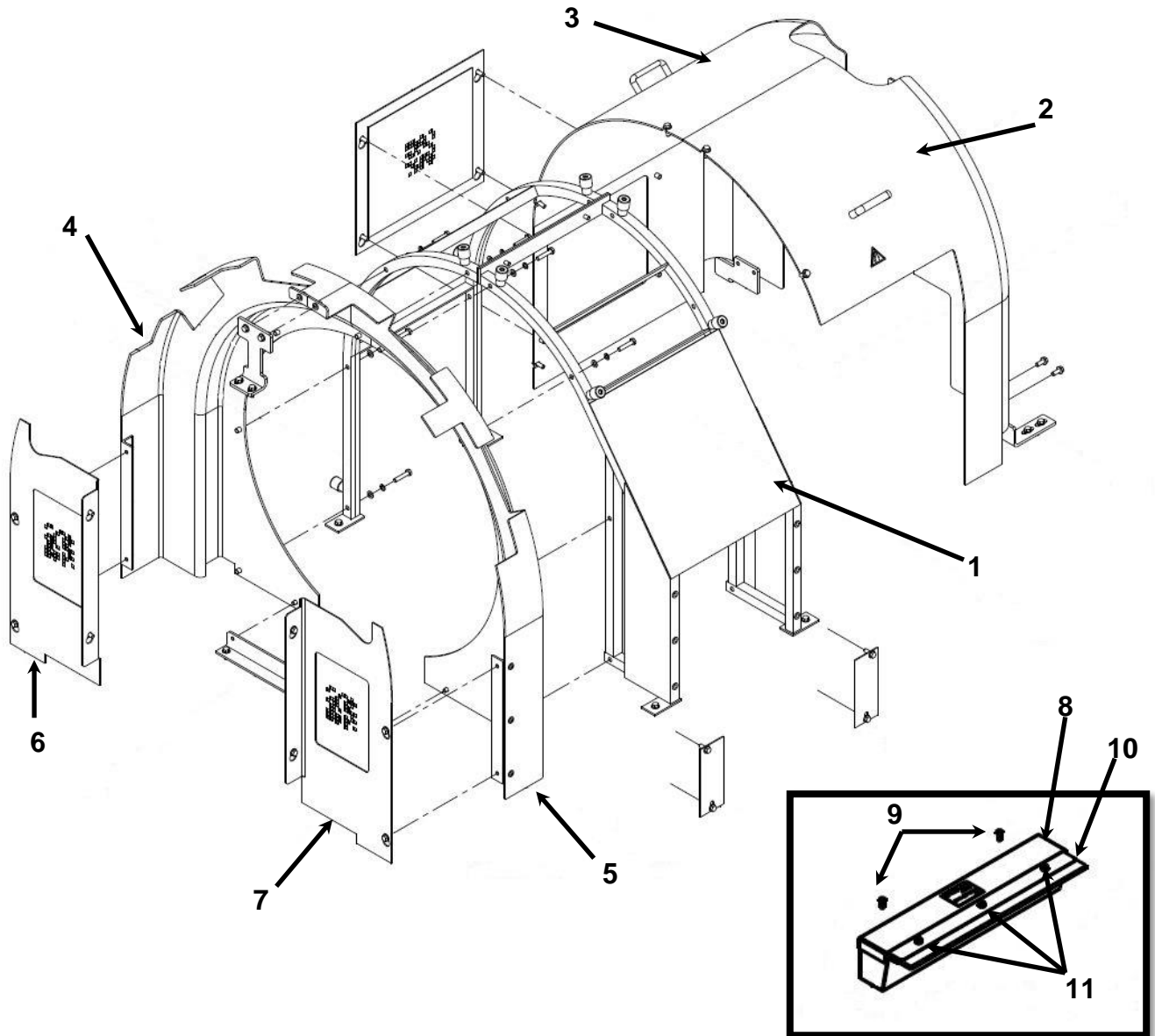


SEISMIC

No.	ISOLATION ASS'Y PART No.	DESCRIPTION	QTY	USED FOR
1	JAA310BGB1	ISOLATION PAD - RUBBER (220MM X 130MM)	1	AAA20850H AAA20850J
2	JAA310BGB2	ISOLATION PAD - RUBBER (170MM X 130MM)	1	
3	JAA310BGB3	ISOLATION PAD - RUBBER (130MM X 130MM)	1	
4	JAA321AET1	ISOLATION BUSHING – RUBBER (55MM MAJOR DIA.)	1	AAA20850H
5	AAA321MC1	ISOLATION BUSHING – RUBBER (65MM MAJOR DIA.)	1	AAA20850J (Seismic)

ELEVATOR MACHINE SkyMotion 260 (25T)

Spare Parts Leaflet
06-AAA20220DF



GUARDING				
No.	PART No.	DESCRIPTION	QTY	USED FOR
1	AAA384BCC1	FRAME; ROPE DROP >=925MM AND <=1250MM	1	AAA20220DF_ _ _ AAA29509AL
	AAA384BCA1	FRAME; ROPE DROP >=1251MM AND <=1600MM	1	
	AAA384BCB1	FRAME; ROPE DROP >=1600MM AND <=1820MM	1	
2	AAA384BBV4	GUARD, SHEAVE, LH, DEFLECTOR SHEAVE SIDE	1	
3	AAA384BBV1	GUARD, SHEAVE, LH, NON- DEFLECTOR SHEAVE SIDE	1	

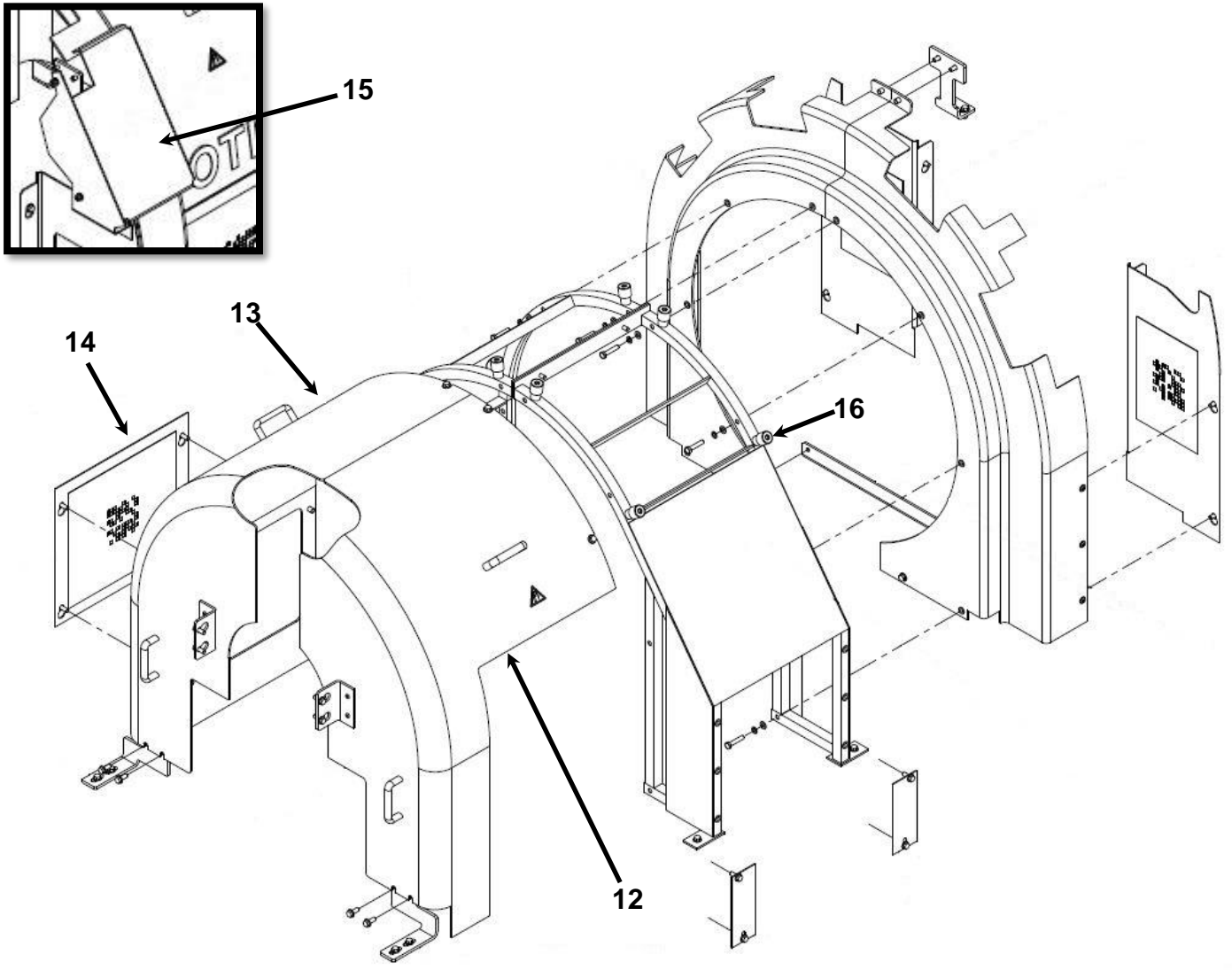
**ELEVATOR MACHINE
SkyMotion 260 (25T)**

**Spare Parts Leaflet
06-AAA20220DF**

4	AAA384BBT1	GUARD, BRAKE, SIDE 1	1	
5	AAA384BBT2	GUARD, BRAKE, SIDE 2	1	
6	AAA384BBY1	GUARD, BRAKE STAND, 1	1	
7	AAA384BBY2	GUARD, BRAKE STAND, 2	1	
8	JAA508AAP6	ROPE LUBRICATOR	1	AAA508AS1
9	DIN6921M6X16-8.8Z	M6 X 16 HEX FLANGE BOLT	2	
10	JAA488AAD6	WICK, ROPE LUBRICATOR	1	
11	DIN6921M6X30-8.8Z	M6 X 30 HEX FLANGE BOLT	3	

ELEVATOR MACHINE SkyMotion 260 (25T)

Spare Parts Leaflet
06-AAA20220DF



GUARDING (cont.)

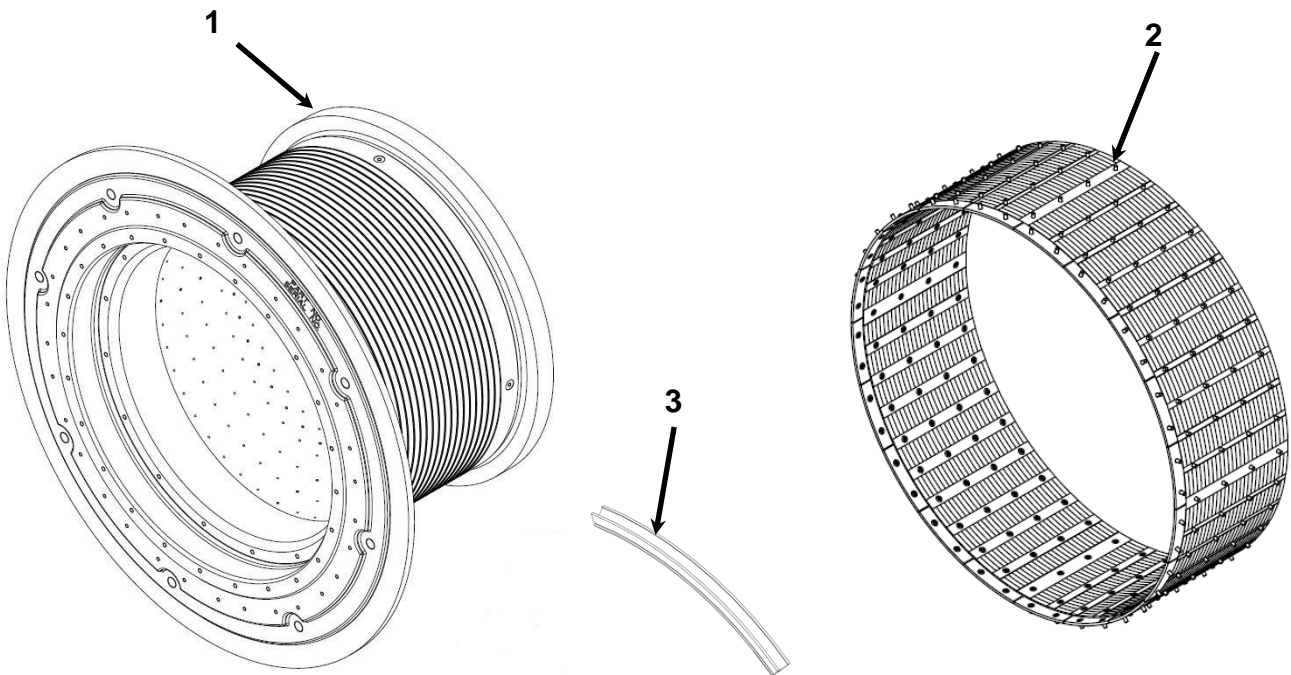
No.	PART No.	DESCRIPTION	QTY	USED FOR
12	AAA384BBV3	GUARD, SHEAVE, LH, DEFLECTOR SHEAVE SIDE	1	AAA20220DF____ AAA29509AL
13	AAA384BBV2	GUARD, SHEAVE, LH, NON-DEFLECTOR SHEAVE SIDE	1	
14	AAA384BBX1	GUARD, ROPE WINDOW	1	
15	AAA384BCE1	GUARD, 3 BRAKE COVER	1	
16	AAA374AEP13	RUBBER CAP	1	

NOTE:

1. ITEM 15 IS ONLY NEEDED IN 3 BRAKE APPLICATIONS (NOT USED IN NSAA)

ELEVATOR MACHINE SkyMotion 260 (25T)

Spare Parts Leaflet
06-AAA20220DF



No.	TRACTION SHEAVE		GROOVES			
	PART No.	DESCRIPTION	NO.	PITCH	ROPE Ø	PITCH Ø
1	AAA265GV1	SHEAVE, ROUND SEAT, DWT	18	22	18	925
	AAA265GV2	SHEAVE, ROUND SEAT, DWT	20	19.6	16	925
	AAA261AR1	SHEAVE, SHEAVE LINER, SWT	12	29	18	925
2	AAA421BA1	ROTOR ASSEMBLY, MAGNET A-MOTOR (260MM LENGTH)	--	--	--	--
	AAA421BA2	ROTOR ASSEMBLY, MAGNET B-MOTOR (400MM LENGTH)	--	--	--	--
	AAA421BA3	ROTOR ASSEMBLY, MAGNET A-MOTOR (JAPAN MAGNETS, 260MM LENGTH)	--	--	--	--
	AAA421BA4	ROTOR ASSEMBLY, MAGNET B-MOTOR (JAPAN MAGNETS, 400MM LENGTH)	--	--	--	--
3	AAA251FD400	LINER (INSERT), TRACTION SHEAVE (NOTE 3)	--	--	--	--

NOTES:

1. THE REPLACEMENT TRACTION SHEAVE (ITEM 1) MUST BE ORDERED WITH THE MOTOR ROTOR (ITEM 2) PRE-ASSEMBLED IN THE TRACTION SHEAVE.
2. MACHINES IN JAPAN MUST HAVE ROTOR (ITEM 2) WITH JAPANESE MAGNETS.

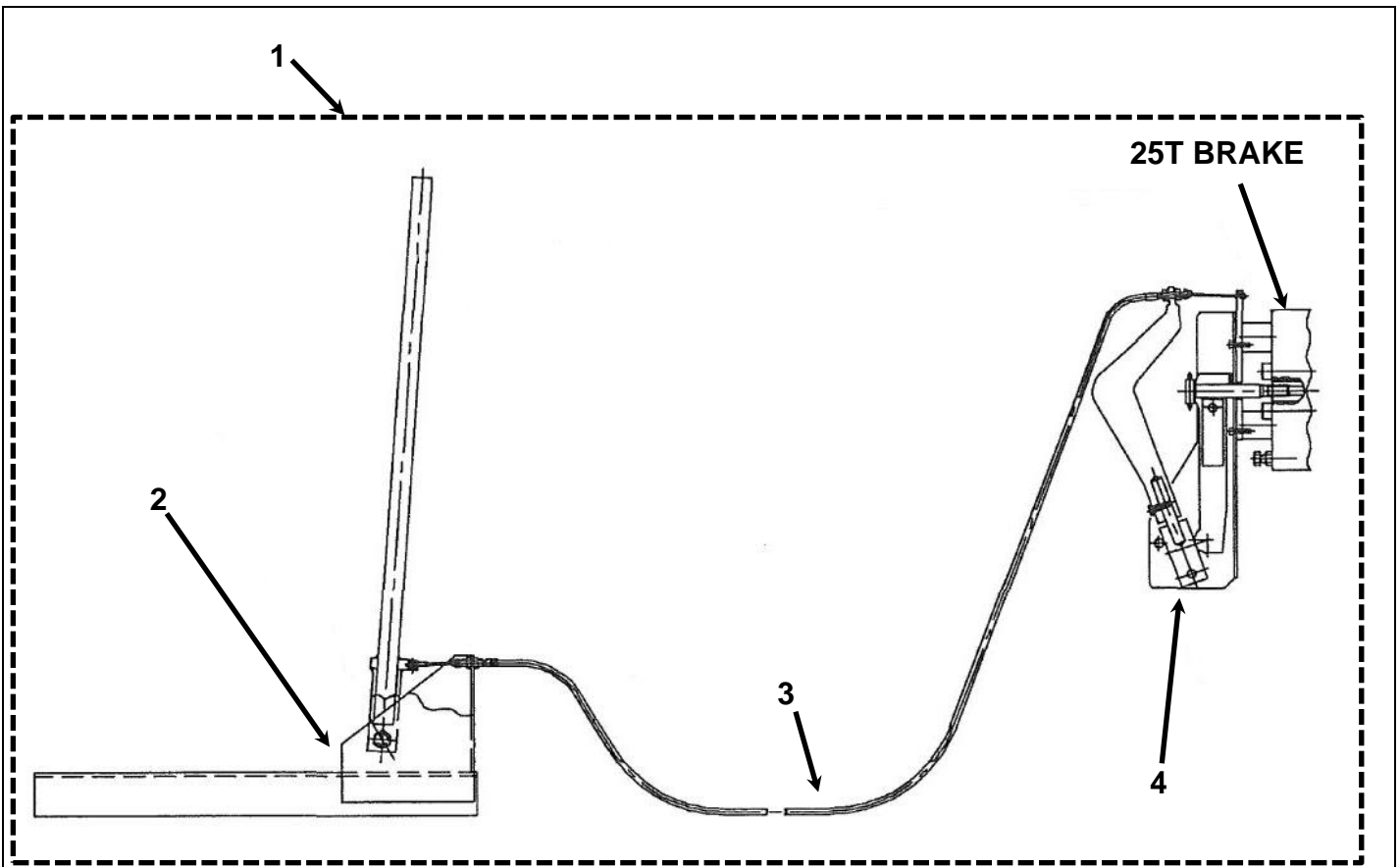
ELEVATOR MACHINE
SkyMotion 260 (25T)

Spare Parts Leaflet
06-AAA20220DF

3. AAA251FD400 INCLUDES (8) LINER SEGMENTS FOR ONE FULL GROOVE. THE QUANTITY REQUIRED FOR A FULL MACHINE EQUALS THE NUMBER OF HOIST ROPES. IT IS RECOMMENDED TO ORDER 1 EXTRA LINER SET PER BANK OF MACHINES IN CASE OF DAMAGE DURING INSTALLATION.

ELEVATOR MACHINE SkyMotion 260 (25T)

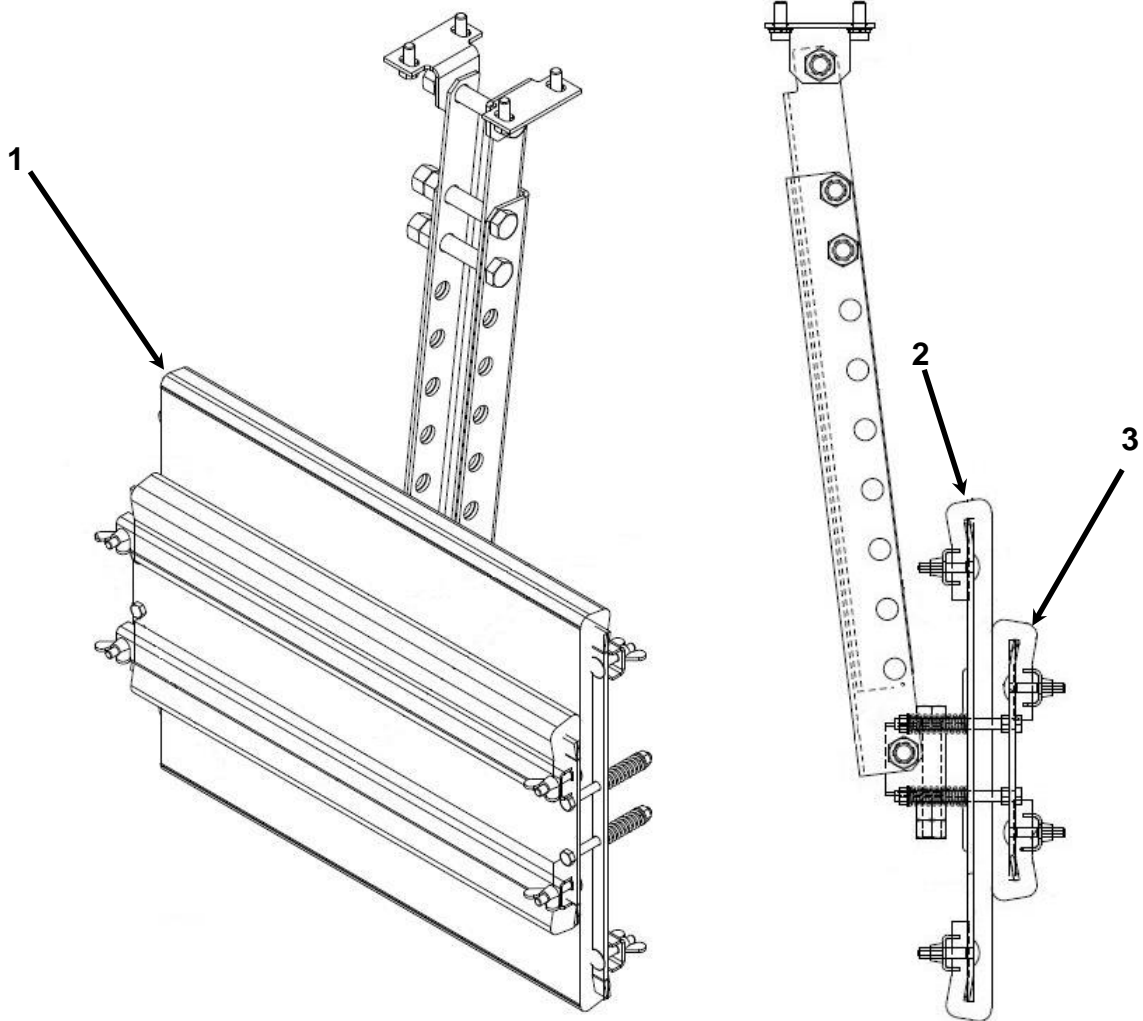
Spare Parts Leaflet
06-AAA20220DF



MANUAL BRAKE RELEASE TOOL				
No.	PART No.	DESCRIPTION	QTY	USED FOR
1	AAA29515E1	BRAKE RELEASE TOOL ASSEMBLY, 3 CALIPERS	1	AAA20236AD1 AAA20236AD2
	AAA29515E2	BRAKE RELEASE TOOL ASSEMBLY, 4 CALIPERS	1	
2	AAA29515E20	BRAKE RELEASE TOOL, HAND LEVER	1	
3	AAA29515E30	BRAKE RELEASE TOOL, CABLE	1	
4	AAA295E10	BRAKE RELEASE TOOL, BRAKE LEVER	1	

ELEVATOR MACHINE SkyMotion 260 (25T)

Spare Parts Leaflet 06-AAA20220DF



ROPE CLEANER				
No.	PART No.	DESCRIPTION	QTY	USED FOR
1	AAA27000AAJ1	CARPET WIPER, ASSEMBLY	1	AAA20220DF_---- AAA293BF1
2	AAA297CD1	CARPET	1	AAA27000AAJ1
3	AAA297CD2	CARPET	1	AAA27000AAJ1