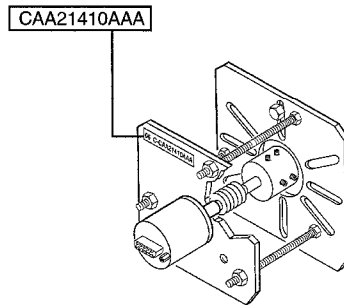
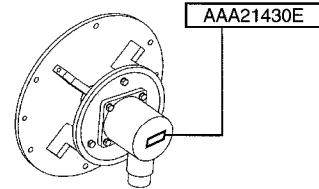
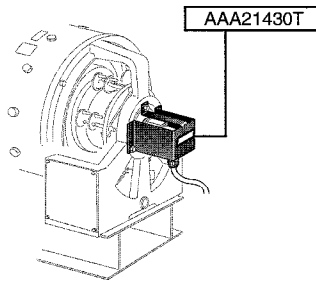
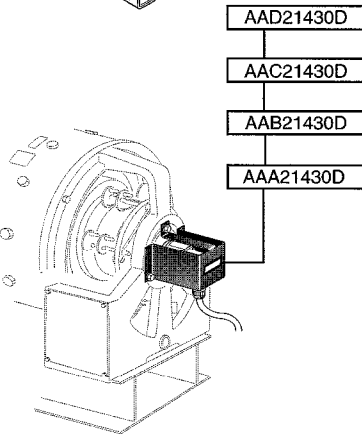
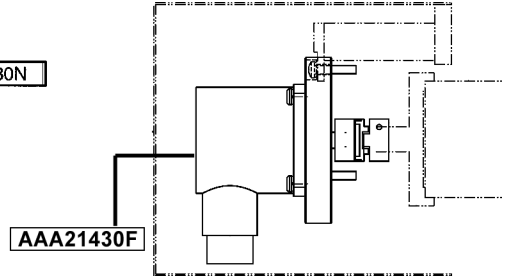
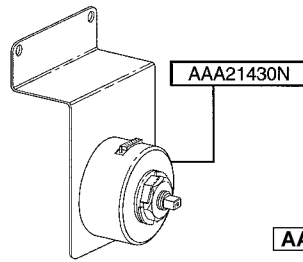
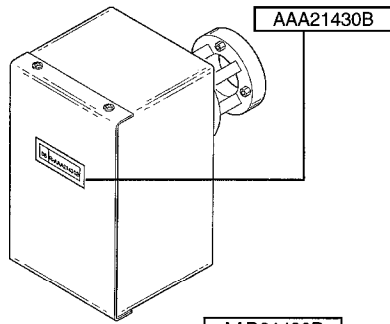


Encoders for Geared, Gearless & Mod Machines

Spare Parts Leaflet 06-AAA21430E

August 26, 2015 / Page 1 of 24



OTIS

SERVICE ENGINEERING
Otis Elevator Company
Bloomfield, Connecticut USA

Unpublished Work—© Otis Elevator Co.; 2015

Leaflet Description

This leaflet consolidates all type 21410 and 21430 motor encoder mounting assembly SPLs into one master SPL. Included are the Mod encoder mounting assembly CAA21410AAA, the motor encoders 21430 series assemblies AAA21430B and AAA21430D, and others as shown on the cover of this SPL. Please note that each encoder type has two pages at minimum: one lists the complete assembly, the other(s) lists service parts. To facilitate correct parts selection, service parts for all revision levels (AAA-, AAB-, AAC-, AAD-, etc.) are located on the same page. For more detailed application or parts descriptions, please refer to each individual encoder drawing (given on your encoder's vintage tag or listed below). Upgrades and improvements to existing encoder assemblies are developed periodically. Refer to TIP category 3.5.1 for the latest options, which may have been released between updates to this SPL.

Leaflet Revisions

| Date Revised | Subject Matter Expert | Reason for Revision |
|---------------------|--------------------------------|--|
| March 1993 | --- | SPL for encoder type 21430B published as 06-AAA21430B |
| September 1993 | --- | SPL for encoder type 21430D published as 06-AAA21430D |
| Mach 1994 | --- | 06-AAA21430D updated & revised |
| May 1998 | A. Bozorgzadeh & J. Richter | all motor encoders consolidated into one leaflet |
| August 17, 1999 | J. Richter | Added part: alignment tool |
| February 25, 2005 | Jesse Richter | Added detail to modernization encoders pp. 18-25, added AAA21430F |
| January 5, 2007 | Jesse Richter | Added cable lengths in the description; updated cross-reference. |
| August 5, 2008 | Jesse Richter | Updated illustration and revised descriptions for Ref. 1, 3, 4, and 5 on page 21. |
| January 20, 2010 | Craig Metcho | New part numbers AAA21430E4, AAA21430E5, AAA21430F4, AAA21430F5, AAA21430N3, AAA21430N6, ABA174RH8, ABA174RH9, ABA174RH12, ABA174RH13 were added on pp. 9 through 14 |
| February 17, 2010 | Jesse Richter | Removed Craig Metcho's name from the SME line on History pages |
| February 23, 2011 | Chris Koenig | Update motor table p.22. Added controller models pp. 23, 24. |
| August 26, 2015 | Chris Koenig and Jesse Richter | Updated pp. 4, 14, 23, and 24 |

(Continued on next page)

History (cont.)

06-AAA21430E

Related Drawings

| Drawing No. | Title | Drawing No. | Title |
|-------------------------------------|--|-------------|--|
| CAA21410AAA | Arrangement & Assembly of All Modernization Encoder Mounting | AAA21430B | Assembly & Arrangement, Encoder (E311) |
| AAA21430D AAB21430D AAD21430D | Assembly & Arrangement, Encoder Mounting | AAA21430E | Assembly, Encoder Mounting |
| AAB21430N | Encoder Assembly, GEM/MVS | AAA21430T | Assembly & Arrangement, Encoder Mounting |
| AAA21430F | Assembly & Arrangement, Encoder Mounting | --- | --- |

Related Documents

| Document ID | Title |
|--------------|---|
| TIP 3.5.1-8 | Mach. Vibration Caused by Inconsistent PVT Pulses & Premature Encoder & Coupling Failures |
| TIP 3.5.1-9 | HUCO Encoder Couplings |
| TIP 3.5.1-10 | Revised PVT Shaft Extension on Gearless Machines |
| TIP 3.5.1-12 | PVT Installation for Modernization |

Subject Matter Expert

| Name | Department |
|---------------|-------------------------|
| Jesse Richter | OSC Service Engineering |

About Spare Parts Leaflets...

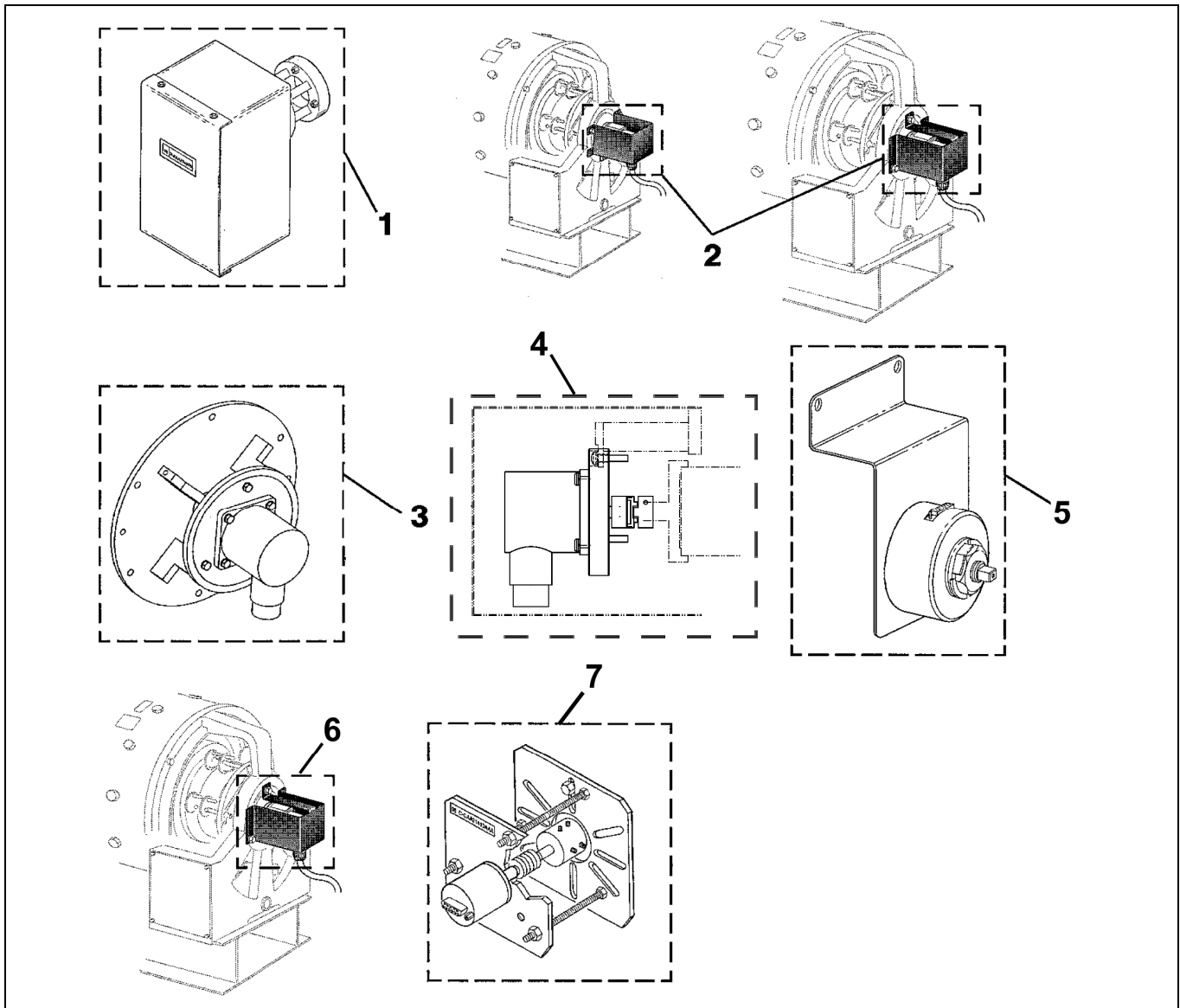
This document lists the lowest replaceable units (LRUs) for the standard version of the product. The LRUs are chosen by a team of Otis associates representing engineering and manufacturing.

While goal of this document is to make parts identification as easy as possible, the document cannot be all-inclusive. Elevator and escalator contracts classified as "special" or "custom" are not addressed here. For such contracts, please refer to specified information, the contract folder, TIPs, Field Education Articles, Construction Letters, etc. for further information.

If you have any suggestions about this document, please contact the subject matter expert listed on this page.

06-AAA21430E

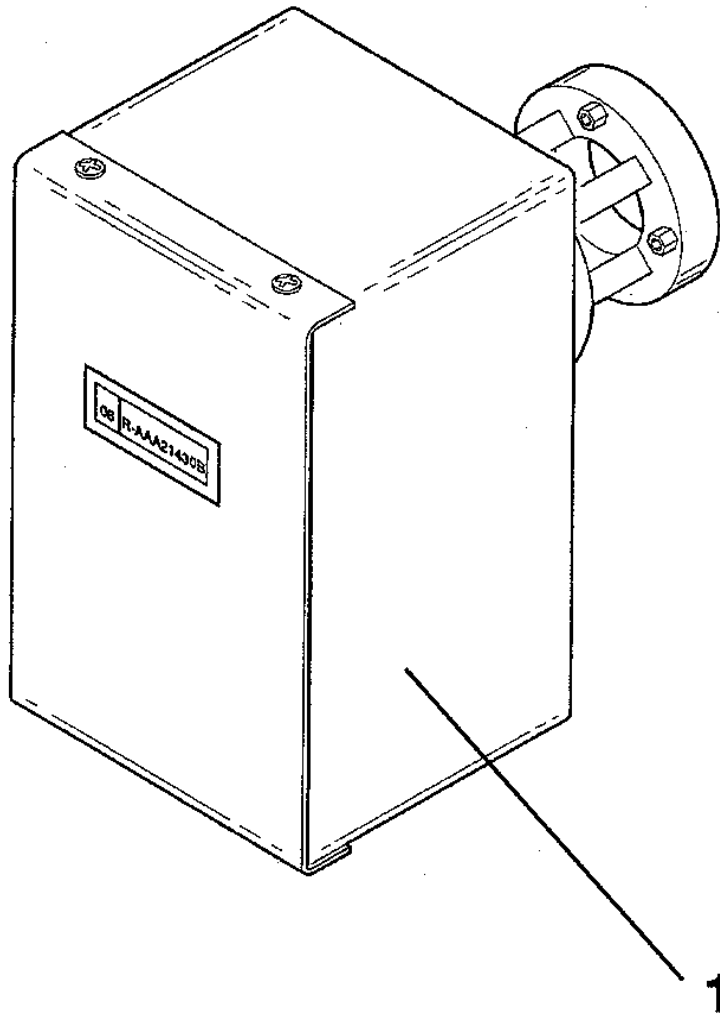
Table of Contents



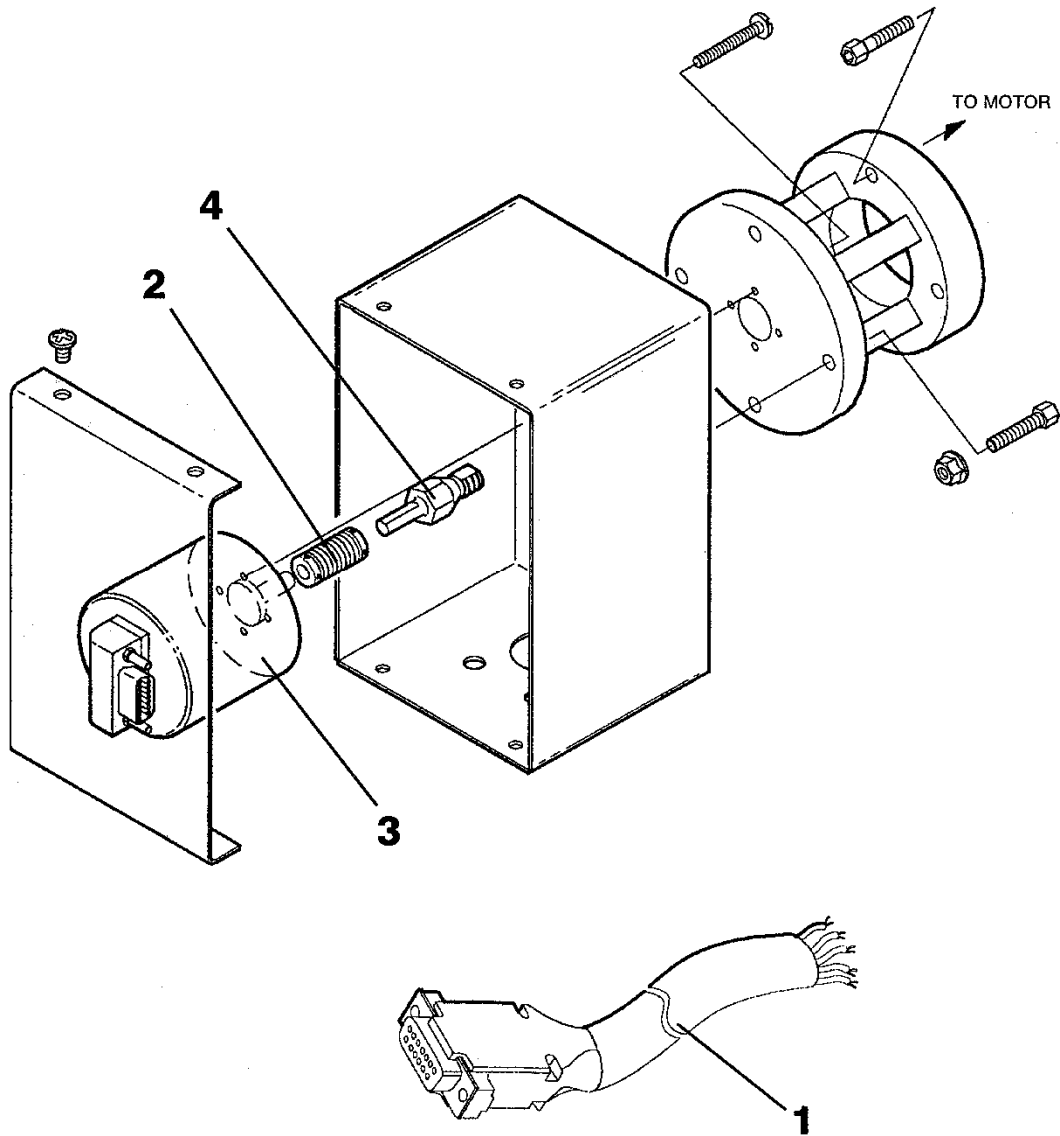
| REF. NO. | DESCRIPTION | TYPE | PAGE NO. |
|----------|--|-------------|----------|
| 1 | Encoder, 311VF & GEM Models | AAA21430B | 5 & 6 |
| 2 | Encoder, Gearless Machines (HT series), Mfg. start date ~ 10/1/1991 (HES, Elevonic® 411) | AAA21430D | 7 & 8 |
| 3 | Encoder, D25 Machine (HVS-HMR, Elevonic® 411) | AAA21430E | 9 & 10 |
| 4 | Encoder, 156MST Machine (HVS for 500, 700, & 800 F.P.M.) | AAA21430F | 11 & 12 |
| 5 | Encoder, GEM and MVS Models, Imperial 525AC and 527AC, Otis 30T | AAA21430N | 13 & 14 |
| 6 | Encoder, Gearless Machines (HT series), Mfg. start date ~ 4/17/98 | AAA21430T | 15 & 16 |
| 7 | Encoder, Modernization Equipment | CAA21410AAA | 17-24 |


AAA21430B Encoder Assembly

06-AAA21430E



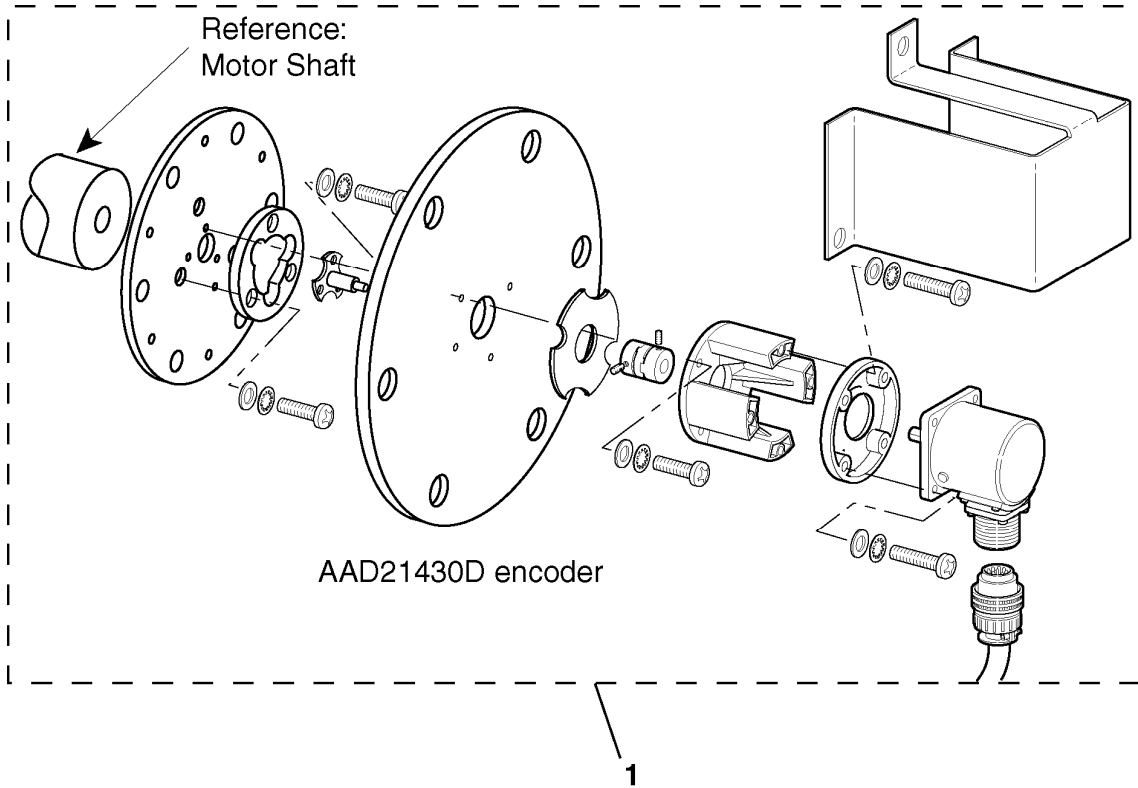
| W/O VINTAGE | | |
|-------------|------------|--|
| REF. NO. | PART No. | DESCRIPTION |
| 1 | AAA21430B1 | Assembly, Encoder, Elevonic® 311VF and Geared Elevonic Model (GEM) |



| REF. NO. | W/O VINTAGE | DESCRIPTION |
|----------|------------------------|---|
| | PART No. | |
| 1 | AAA174RH2 ABA174RH2 | Cable Assembly, 5 Twisted Pairs, Cable Length = 50 ft. (for Elevonic® 311VF) |
| | AAA174RH3 ABA174RH3 | Cable Assembly, 5 Twisted Pairs, Cable Length = 20 ft. (for GEM) |
| 2 | 215BN1 | Coupling,  TIP 3.5.1-8 |
| | ABA215BX2 | |
| 3 | AAA633F2 | Encoder |
| 4 | AAA494LG1 | Shaft, Stub |

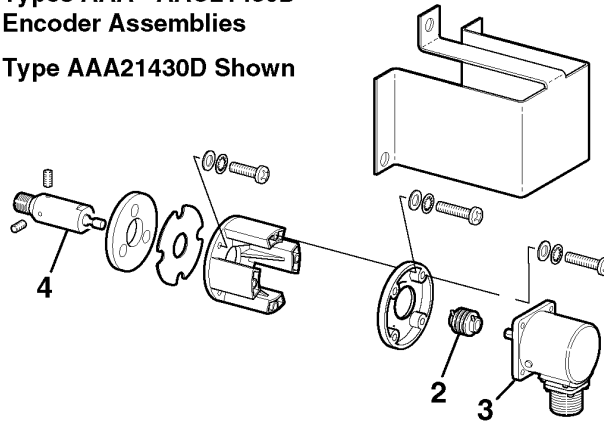
AAD21430D Encoder Assembly

06-AAA21430E

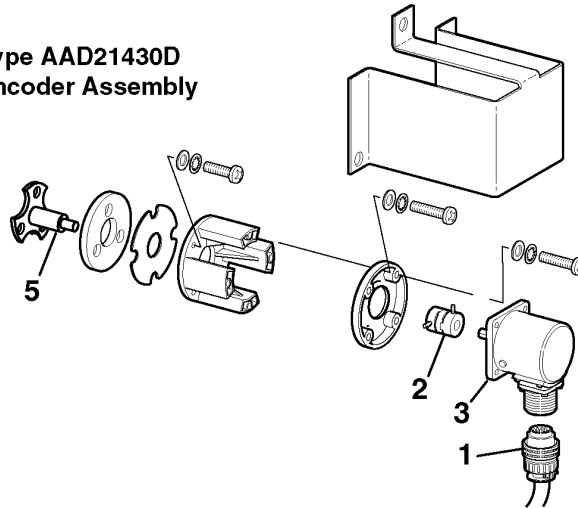



| REF. No. | PART No. | DESCRIPTION | MACHINE | MACHINE MOUNTING END |
|----------|--|---|----------|----------------------|
| | AAA21430D AAB21430D AAC21430D AAD21430D | | | |
| 1 | AAD21430D1 | Encoder Assembly (shown) | 139HT | Commutator |
| | AAD21430D3 | | 155HT | Drive Sheave |
| | AAD21430D4 | | 219HT | Commutator |
| | AAD21430D5 | | 269HT | Commutator |
| | AAD21430D12 | | 269HT | Drive Sheave |
| | AAD21430D11 | | 339HT | Commutator |
| | AAD21430D2 | | 139HTMOD | Commutator |
| | AAD21430D8 | Encoder Assembly, Field Retrofit NOTE: Contains parts: coupling, shaft extension, disc (armature shaft), and safety wire | 155HT | Drive Sheave |
| | AAD21430D9 | | 219HT | Commutator |
| | AAD21430D10 | | 269HT | Commutator |
| | AAD21430D13 | | 269HT | Drive Sheave |
| | AAD21430D15 | | 339HT | Commutator |

Types AAA - AAC21430D
Encoder Assemblies
Type AAA21430D Shown



Type AAD21430D
Encoder Assembly

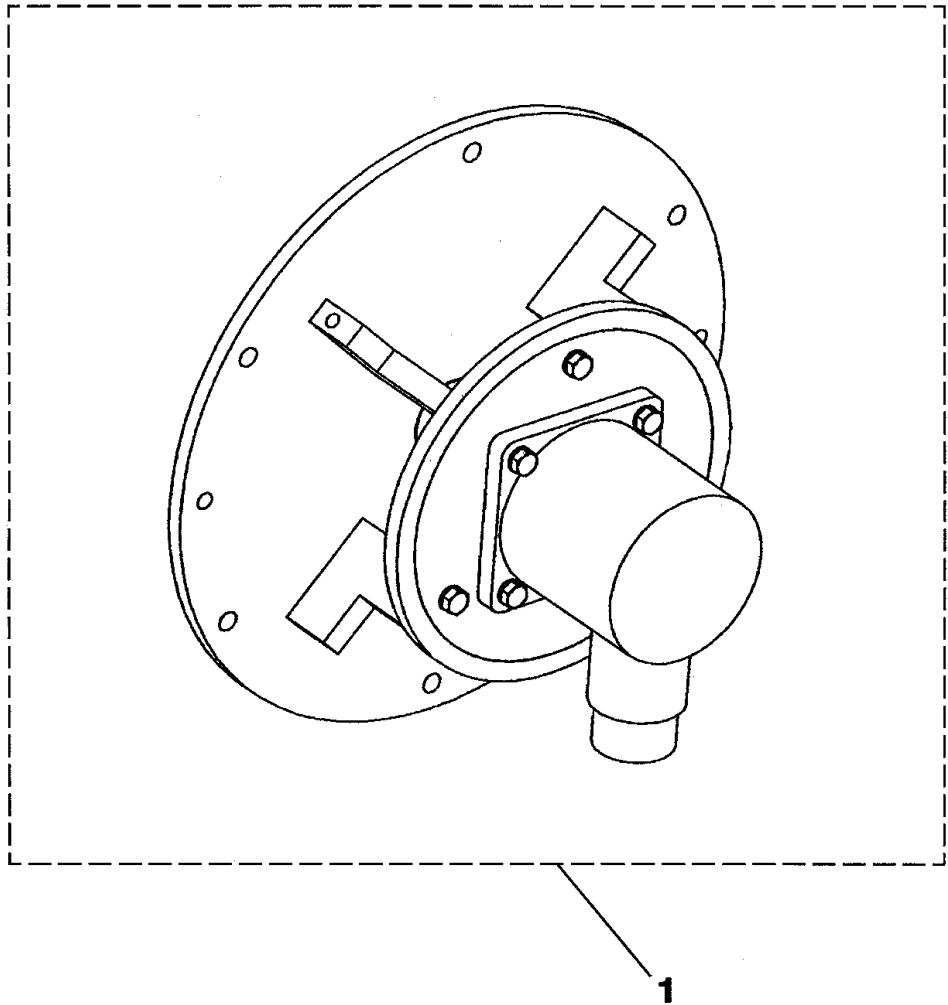


| | AAA21430D | AAB21430D | AAC21430D | AAD21430D | |
|----------|-----------|-----------|-----------|-----------|---|
| REF. No. | PART No. | | | | DESCRIPTION |
| 1 | --- | | | 174GK1 | Cable, Cable Length = 50 ft., NAA only |
| 2 | 215BN3 | 215BN7 | | | Coupling, Flexible,  TIP 3.5.1-9 |
| 3 | A633D1 | | | | Encoder, 10,000 PPR |

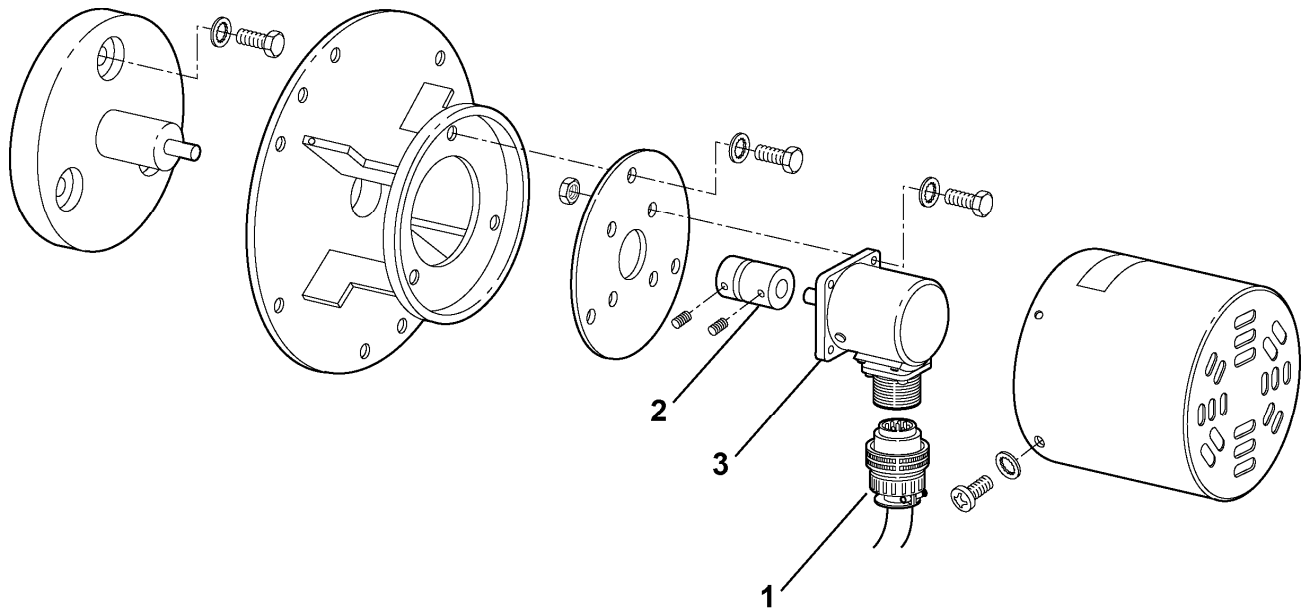
| | AAA21430D | AAB21430D | AAC21430D | AAD21430D | |
|----------|--------------------------------|-----------|-----------|------------------------------|--|
| REF. No. | DESCRIPTION | | | | |
| 4 | Shaft Extension, Type ABA180EW | | | --- | |
| 5 | --- | | | Shaft Extension, Type A494JY | |


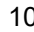
AAA21430E Encoder Assembly

06-AAA21430E



| AAA21430E | | |
|------------------|-----------------|---|
| REF. No. | PART No. | DESCRIPTION |
| 1 | AAA21430E1 | Encoder Assembly, D25 AC Gearless Machine, NAA, w/A633D1 Encoder (shown) |
| | AAA21430E2 | Encoder Assembly, D25 AC Gearless Machine, Nippon Otis |
| | AAA21430E3 | Encoder Assembly, D25 AC Gearless Machine (HVS-HMR), w/AAA659C3 Encoder, Cable Length = 49 ft. |
| | AAA21430E4 | Encoder Assembly, D25 AC Gearless Machine (HVS-HMR), w/AAA659C3 Encoder, Cable Length = 100 ft. |
| | AAA21430E5 | Encoder Assembly, D25 AC Gearless Machine (HVS-HMR), w/AAA659C3 Encoder, Cable Length = 240 ft. |

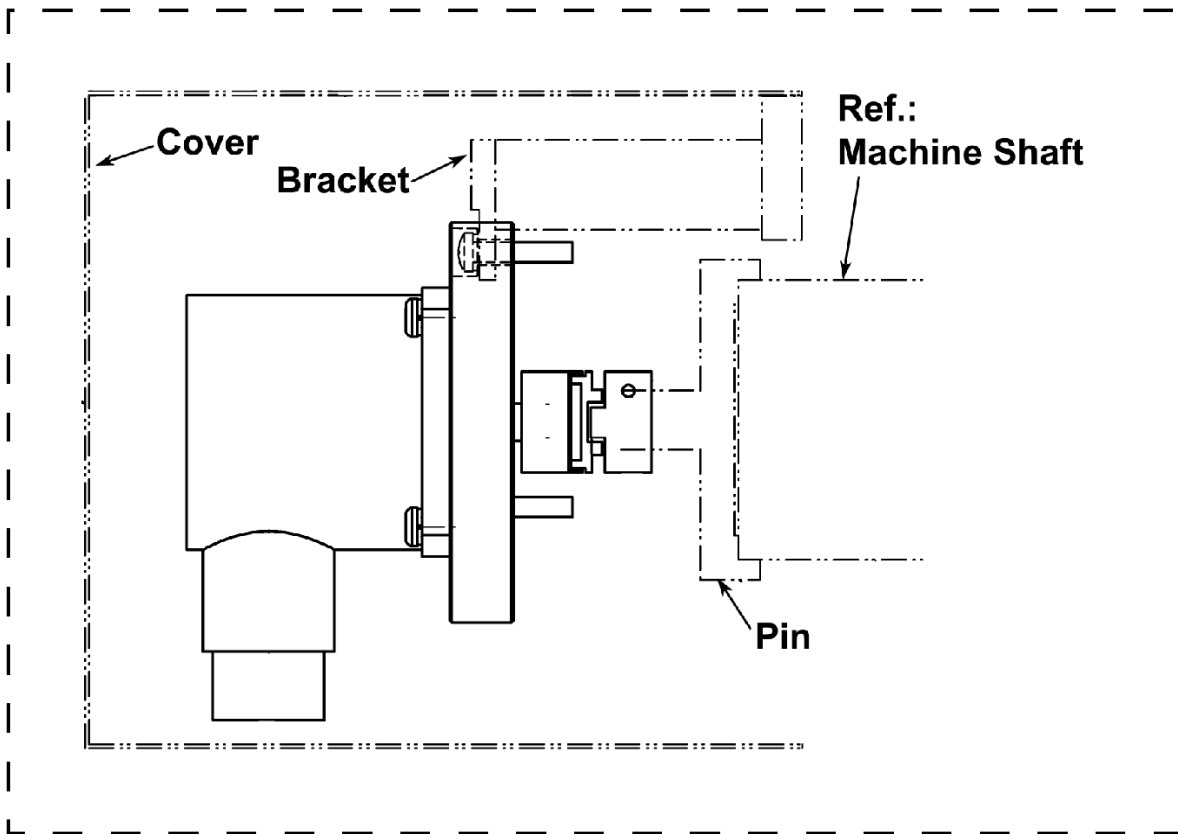


| AAA21430E | | |
|------------------|-----------------|--|
| REF. No. | PART No. | DESCRIPTION |
| 1 | 174GK1 | Cable (shown), Cable Length = 50 ft., NAA only (for A633D1 encoder) |
| | ABA174RH5 | Cable (not shown), Cable Length = 49 ft., NAA only (for AAA659C3 encoder) |
| | ABA174RH9 | Cable (not shown), Cable Length = 100 ft., NAA only (for AAA659C3 encoder) |
| | ABA174RH13 | Cable (not shown), Cable Length = 240 ft., NAA only (for AAA659C3 encoder) |
| 2 | 215BN7 | Coupling (for NAA),  TIP 3.5.1-9 |
| | 215BN21 | Coupling (for Nippon Otis) |
| 3 | AAA659C3 | Encoder (not shown), 10,000 PPR,  D25 AC Gearless Machine (elevator model: HVS-HMR) (HA725100002X103) |
| | A633D1 | Encoder (shown), 10,000 PPR (for NAA) (HA7251000002X101) |
| | JO629P6 | Encoder (not shown), 5,000 PPR (for Nippon Otis E411 HSVF) |


AAA21430F Encoder Assembly (for 156MST Machine)

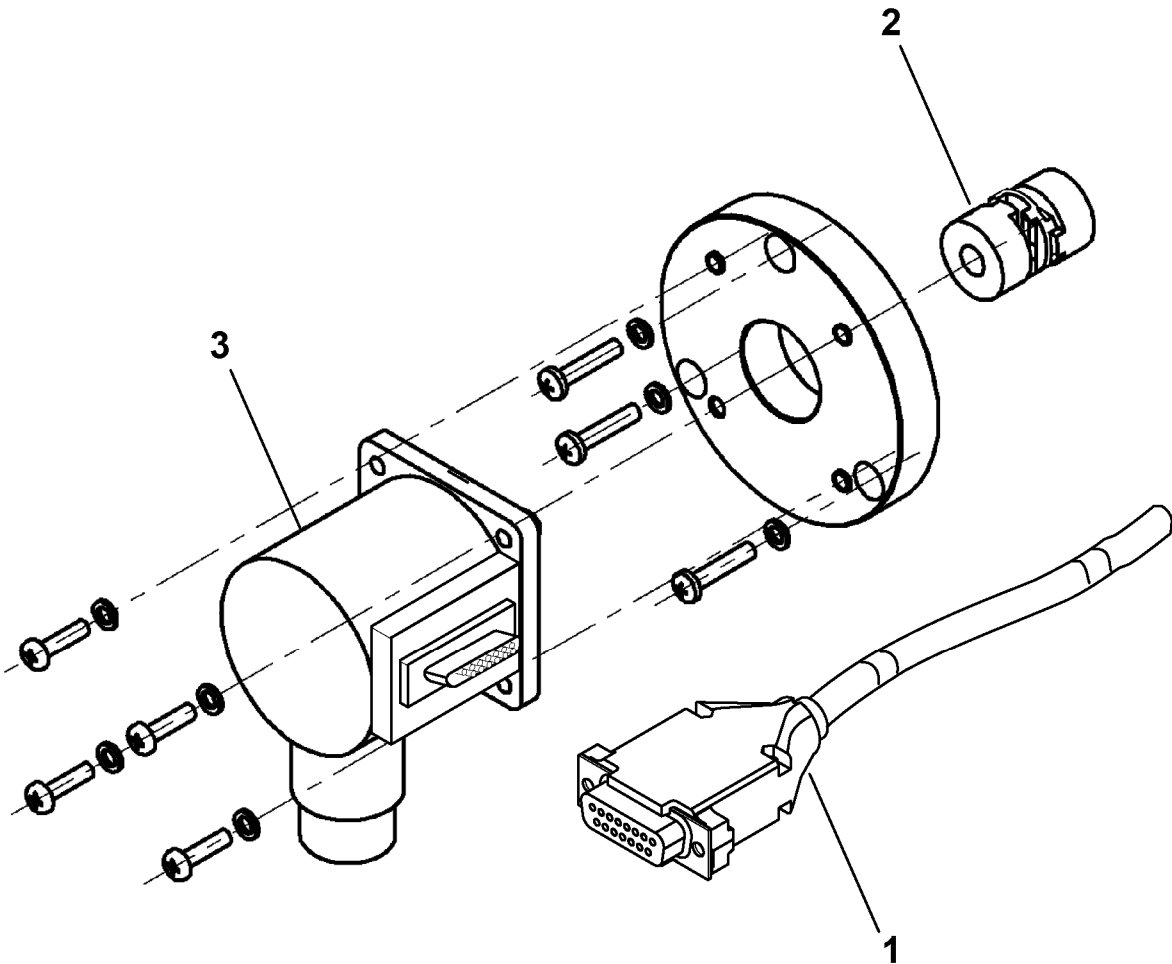
06-AAA21430E


NOTE: “ :: = ” = Nippon Arrangement Parts



| W/O VINTAGE | | | |
|-------------|------------|---------------------------------------|---|
| REF. No. | PART No. | DESCRIPTION | CONDITION |
| 1* | AAA21430F1 | Assembly, Encoder, (w/156MST Machine) | PAO with OVF Drive |
| | AAA21430F3 | Assembly, Encoder (w/156MST Machine) | NAA w/E411VL, Cable Length = 49 ft. |
| | AAA21430F4 | Assembly, Encoder (w/156MST Machine) | NAA w/E411VL, Cable Length = 100 ft. |
| | AAA21430F5 | Assembly, Encoder (w/156MST Machine) | NAA w/E411VL, Cable Length = 240 ft. |

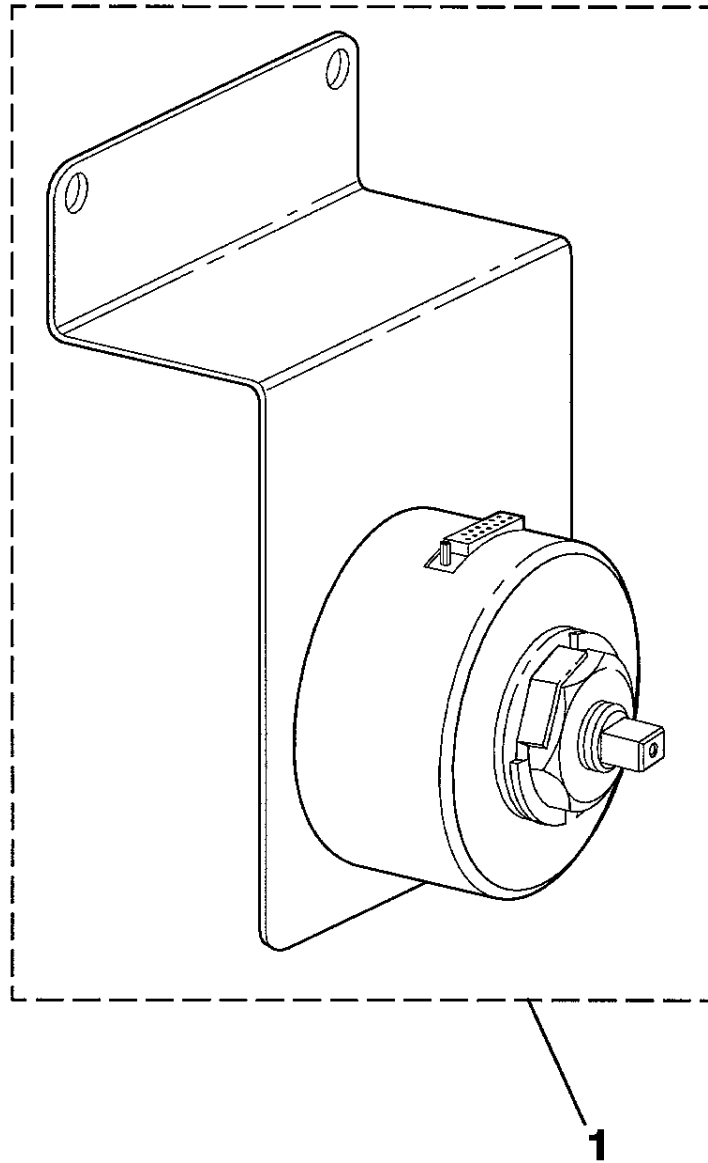
* Also  SPL 06-JAA20220AAE



| | | W/O VINTAGE |
|-----------------|-----------------|---|
| REF. No. | PART No. | DESCRIPTION |
| 1 | ABA174RH2 | Cable, PVT Encoder (9873), Cable Length = 50 ft. |
| | ABA174RH8 | Cable, PVT Encoder (9874), Cable Length = 100 ft. |
| | ABA174RH12 | Cable, PVT Encoder (9874), Cable Length = 240 ft. |
| 2 | 215BN7 | Coupling, 32.5 mm (1.28 in.) L,  TIP 3.5.1-9 |
| 3 | AAA659C3 | Encoder (for NAA), (HA725100002X103), Shown |
| | A633D1 | Encoder (for PAO) (25F0-11-B04-2500-ACTO), See p. 23 |

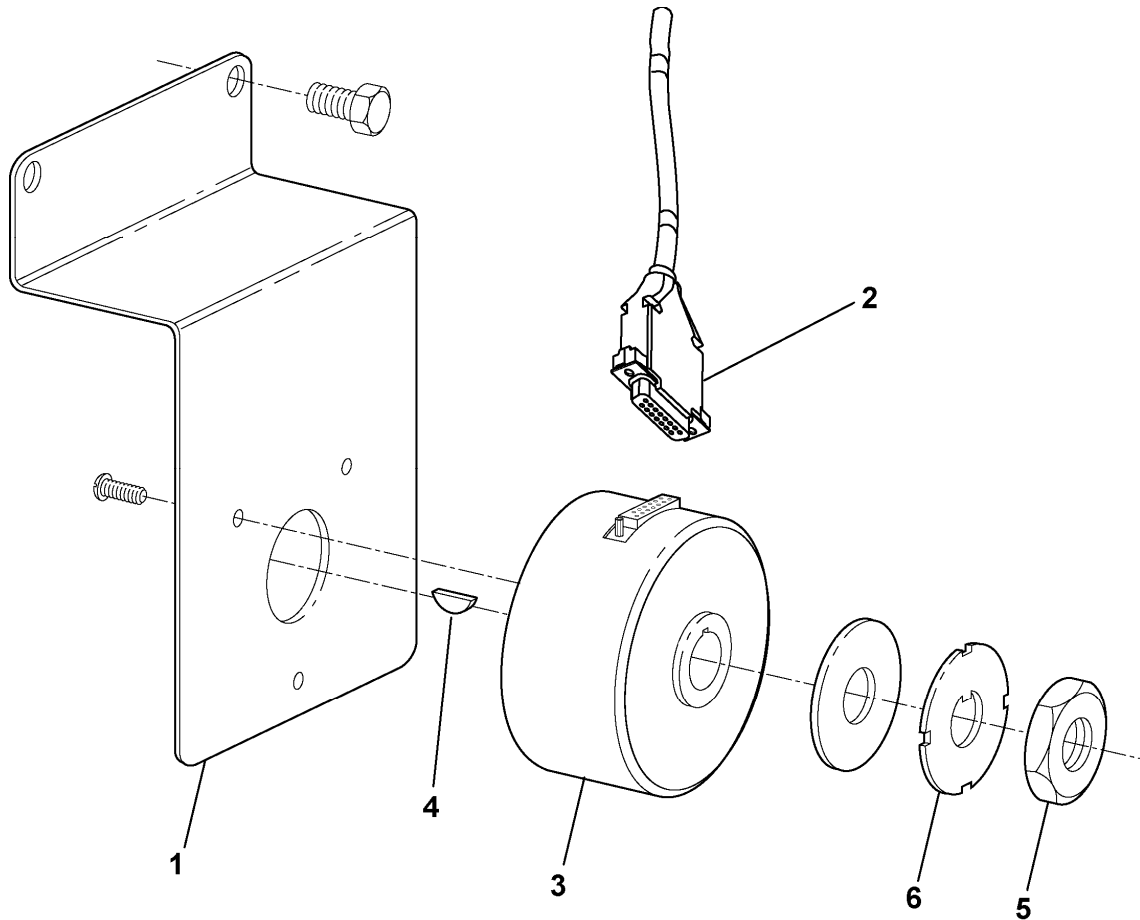
AAA21430N Encoder Assembly

06-AAA21430E



| AAA21430N | | |
|------------------|-----------------|---|
| REF. No. | PART No. | DESCRIPTION |
| 1 | AAA21430N1 | Encoder Assembly, GEM/MVS (Motor Size V180), Cable Length = 50 ft. |
| | AAA21430N2 | Encoder Assembly, GEM/MVS (Motor Size V225), Cable Length = 50 ft. |
| | AAA21430N3 | Encoder Assembly, GEM/MVS (Motor Size V180), Cable Length = 100 ft. |
| | AAA21430N4 | Encoder Assembly, GEM/MVS (Motor Size V225), Cable Length = 100 ft. |
| | AAA21430N5 | Encoder Assembly, GEM/MVS (Motor Size V180), Cable Length = 240 ft. |
| | AAA21430N6 | Encoder Assembly, GEM/MVS (Motor Size V225), Cable Length = 240 ft. |

06-AAA21430E AA _ 21430N Encoder Service Parts

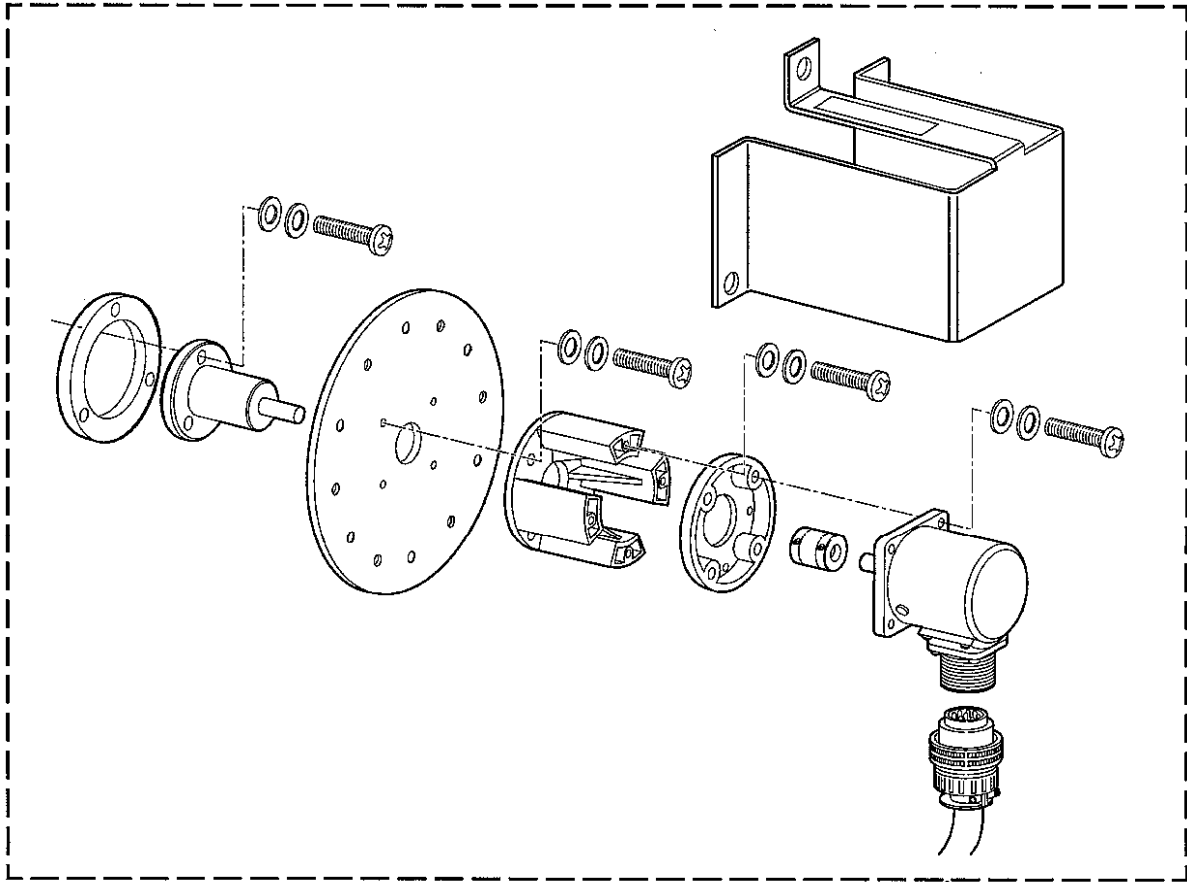


**AAA21430N
AAB21430N**

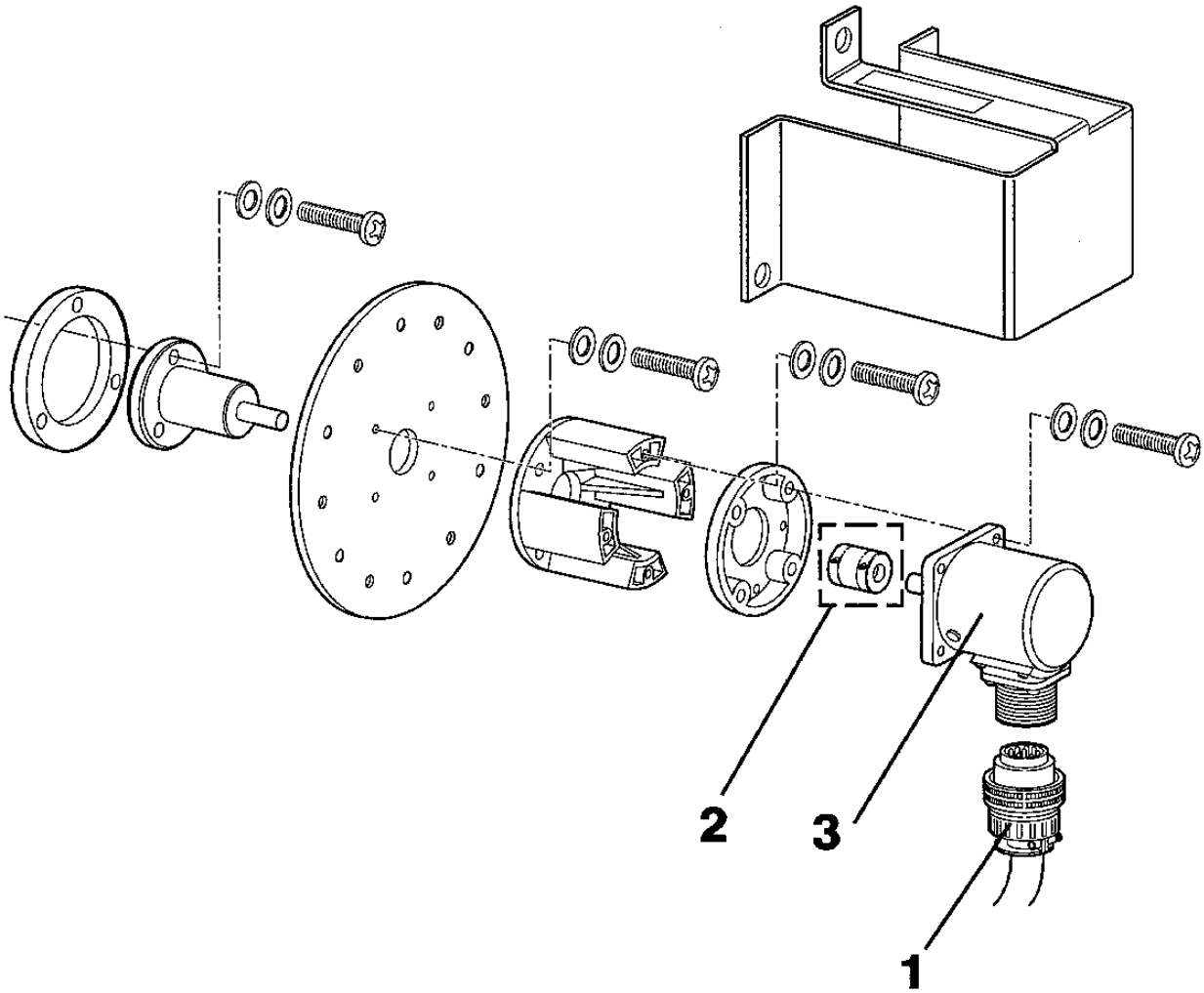
| REF. No. | PART No. | DESCRIPTION |
|----------|----------------------|--|
| 1 | TAA316VV1 | Bracket (Motor Size V180) |
| | TAA316AM1 | Bracket (Motor Size V225) |
| 2 | ABA174RH2 | Cable (encoder to controller), Cable Length = 50 ft. |
| | ABA174RH8 | Cable (encoder to controller), Cable Length = 100 ft. |
| | ABA174RH12 | Cable (encoder to controller), Cable Length = 240 ft. |
| 3 | AAA633L4 ABA633L1 | Encoder, GEM/MVS |
| | AAA633W1 | Encoder, Imperial 525AC, 527AC Machines; Otis 30T Machines |
| | 192BA5 | Key, 5 mm x 5 mm x 15 mm |
| 5 | TAA72B1 | Locknut, M30 |
| 6 | TAA130B1 | Lockwasher, Tab |

AAA21430T Encoder Assembly

06-AAA21430E

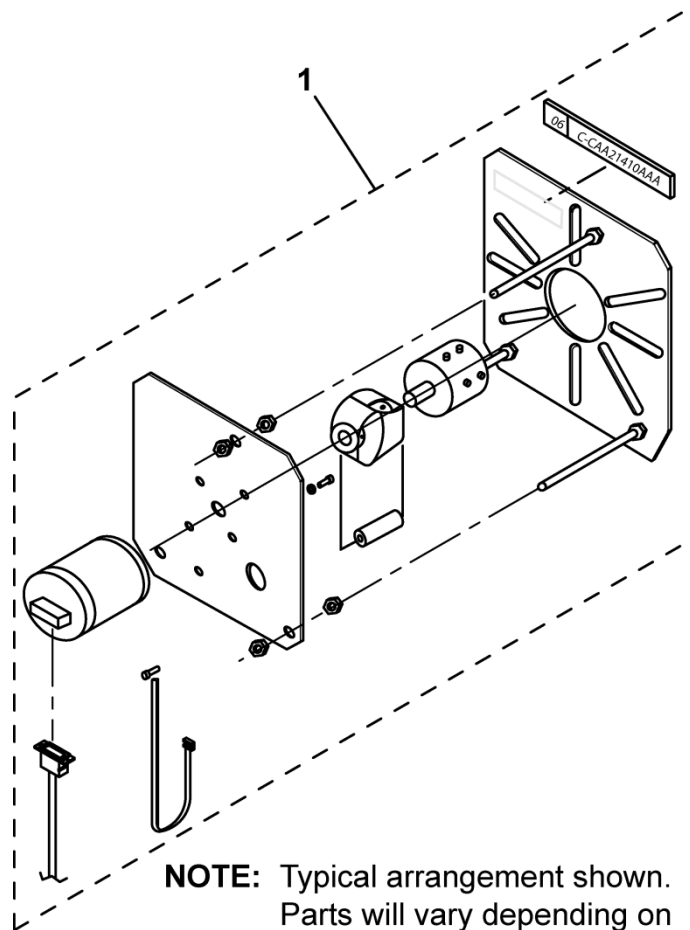


| AAA21430T | | | |
|------------------|-----------------|--------------------|----------------------------|
| REF. No. | PART No. | DESCRIPTION | MACHINE APPLICATION |
| 1 | AAA21430T1 | Encoder Assembly | 139HT, 139 MOD |
| | AAA21430T2 | Encoder Assembly | 155HT |
| | AAA21430T3 | Encoder Assembly | 219HT |
| | AAA21430T4 | Encoder Assembly | 269HT (Commutator Side) |
| | AAA21430T5 | Encoder Assembly | 339HT |
| | AAA21430T6 | Encoder Assembly | 269HT (Sheave Side) |



| AAA21430T | | |
|------------------|-----------------|--|
| REF. No. | PART No. | DESCRIPTION |
| 1 | 174GK1 | Cable, Cable Length = 50 ft., NAA Only |
| 2 | AAA215BZ2 | Coupling, Flexible |
| 3 | A633D1 | Encoder |

Geared Machines Motor Mounting Kits

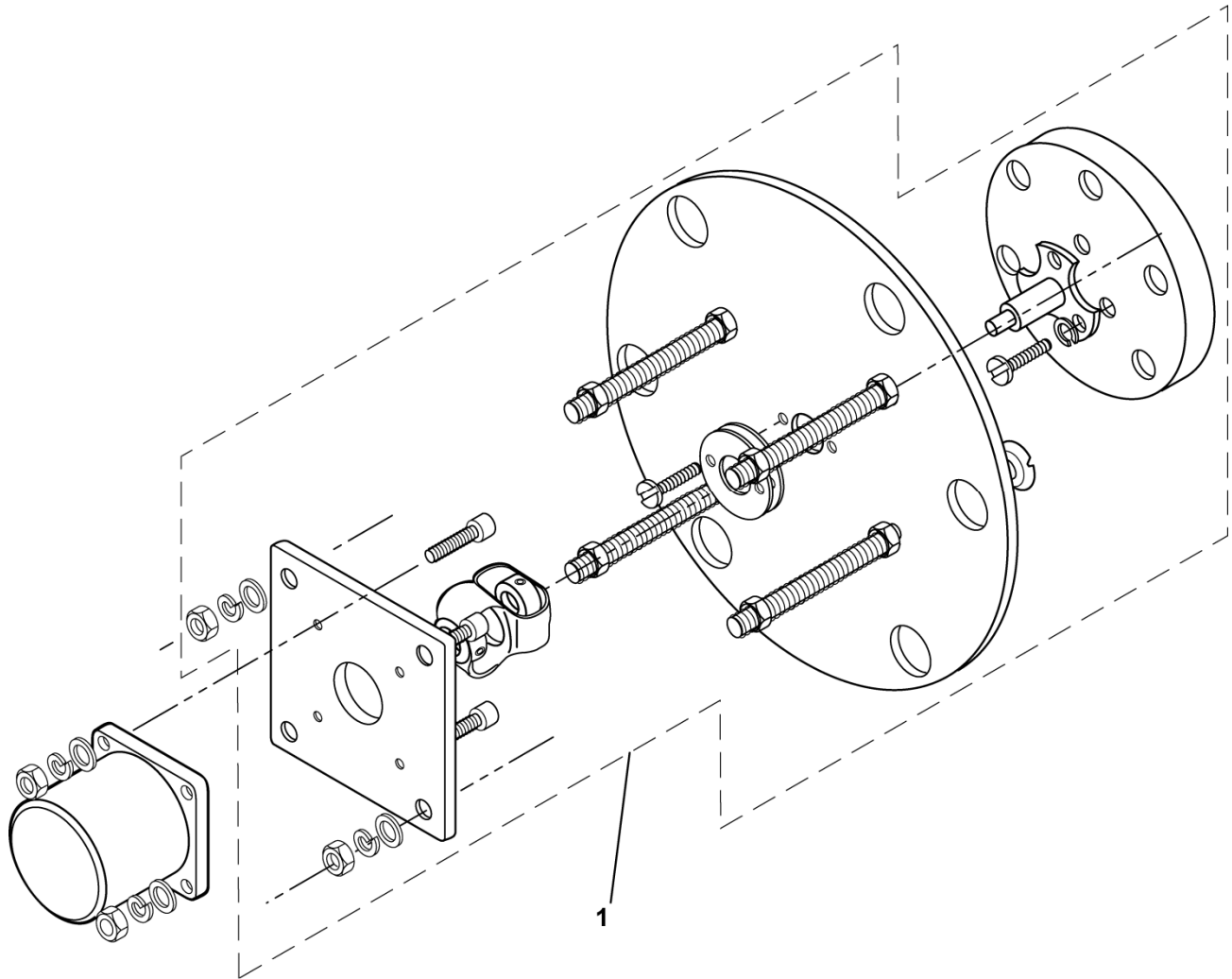


NOTE: Typical arrangement shown.
Parts will vary depending on application arrangement.

| CAA21410AAA | | | | |
|--------------------|-----------------|-------------|---|---|
| REF. No. | PART No. | TYPE | DESCRIPTION | GEARED MACHINE APPLICATIONS |
| 1 | CAA21410AAA200 | 1 | Kit, Motor Encoder Mounting for Geared Machines, See p. 23 for Encoders | Otis Machine with 0-1/4S or 39F Motor |
| | CAA21410AAA202 | | | Otis Machines with 0-1/2S, 2-1/4S (1.281 end shaft height), or 51G Motor |
| | CAA21410AAA203 | | | Otis Machines with 1-1/4S, 1-1/2S, 2-1/4S (1.531 end shaft height), 2-1/2S, 3-1/2S, 4-1/2S, 89F, 77G, 98G, 112G, 139G, 77L, 89L, 98L, or 112L Motor |
| | CAA21410AAA204 | | | Otis Machines with 63G, 65G, or 63L Motor |
| | CAA21410AAA205 | | | Non-Otis Motors |
| | CAA21410AAA206 | --- | Kit, Sound Isolation Upgrade | Geared Machine |

06-AAA21430E

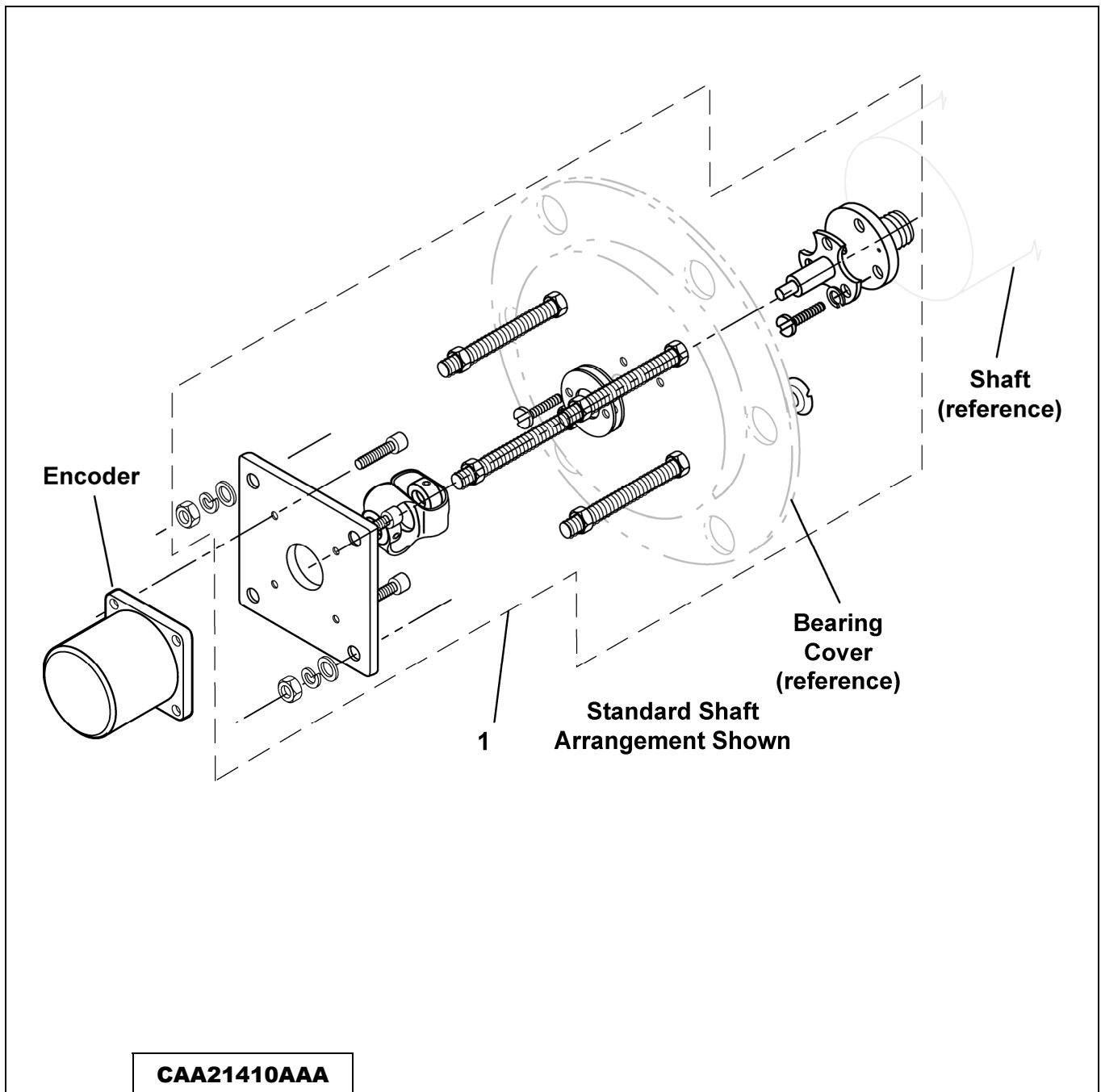
**CAA21410AAA Modernization Encoder Type 2
Gearless Machines Motor Mounting Kits**



| CAA21410AAA | | | | |
|-------------|----------------|------|---|-------------------------------|
| REF. No. | PART No. | TYPE | DESCRIPTION | GEARLESS MACHINE APPLICATIONS |
| 1 | CAA21410AAA101 | 2 | Kit, Motor Encoder Mounting for Gearless Machines, See p. 23 for Encoders | 130HT, 131HT (commutator end) |
| | CAA21410AAA102 | | | 139HT (commutator end) |
| | CAA21410AAA103 | | | 155HT (commutator end) |
| | CAA21410AAA104 | | | 219HT (commutator end) |
| | CAA21410AAA105 | | | 219HT (sheave end) |
| | CAA21410AAA106 | | | 269HT (commutator end) |
| | CAA21410AAA107 | | | 269HT (sheave end) |

**CAA21410AAA Modernization Encoder Type 3
Non-Otis Machines Motor Mounting Kits**

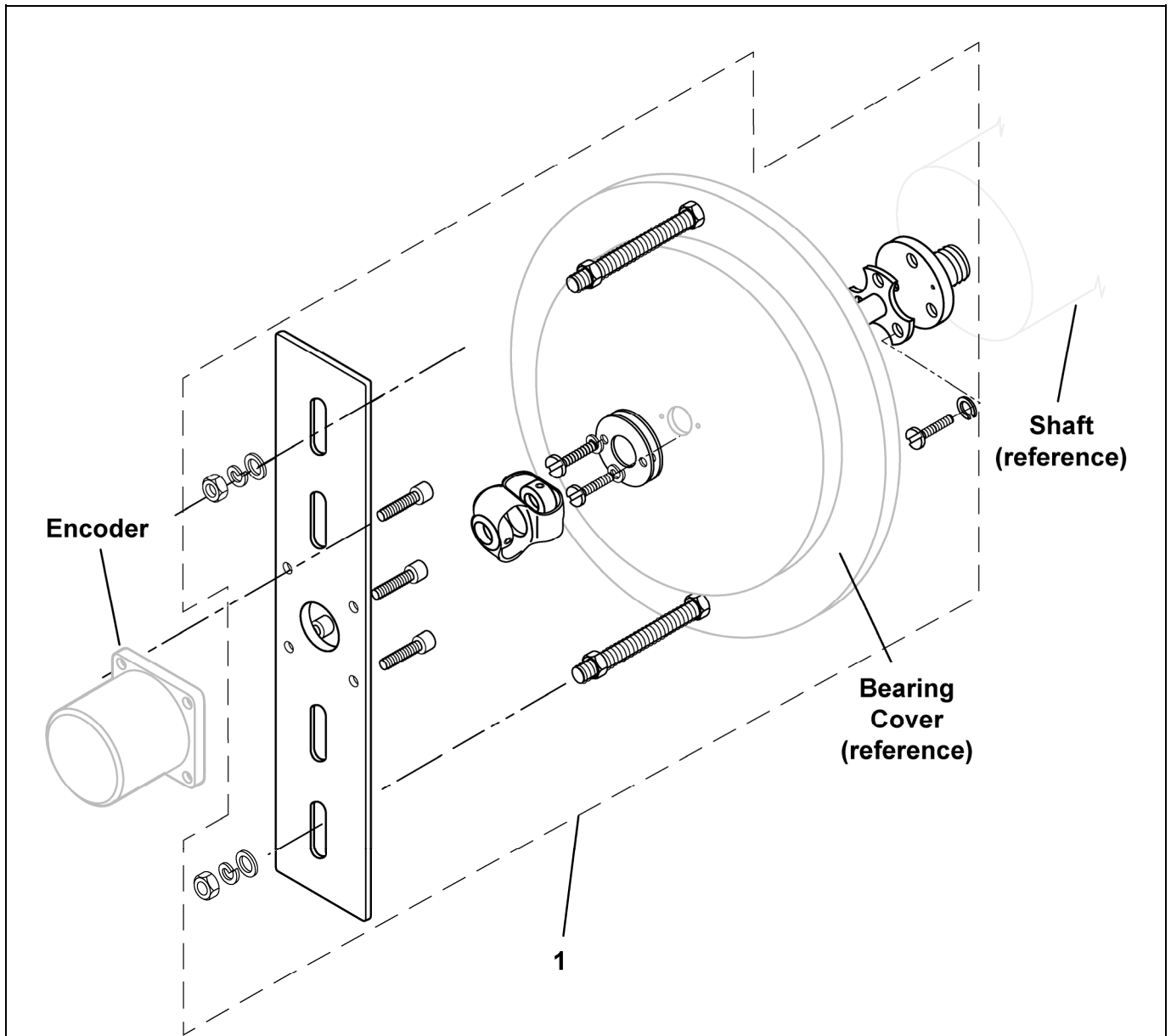
06-AAA21430E



| CAA21410AAA | | | | |
|--------------------|-----------------|-------------|---|-----------------------------|
| REF. No. | PART No. | TYPE | DESCRIPTION | MACHINE APPLICATIONS |
| 1 | CAA21410AAA205 | 3 | Kit, Motor Encoder Mounting for Non-Otis Machines, See p. 23 for Encoders | Non-Otis Motors |
| | CAA21410AAA206 | --- | Kit, Sound Isolation Upgrade | Geared Machine |

06-AAA21430E

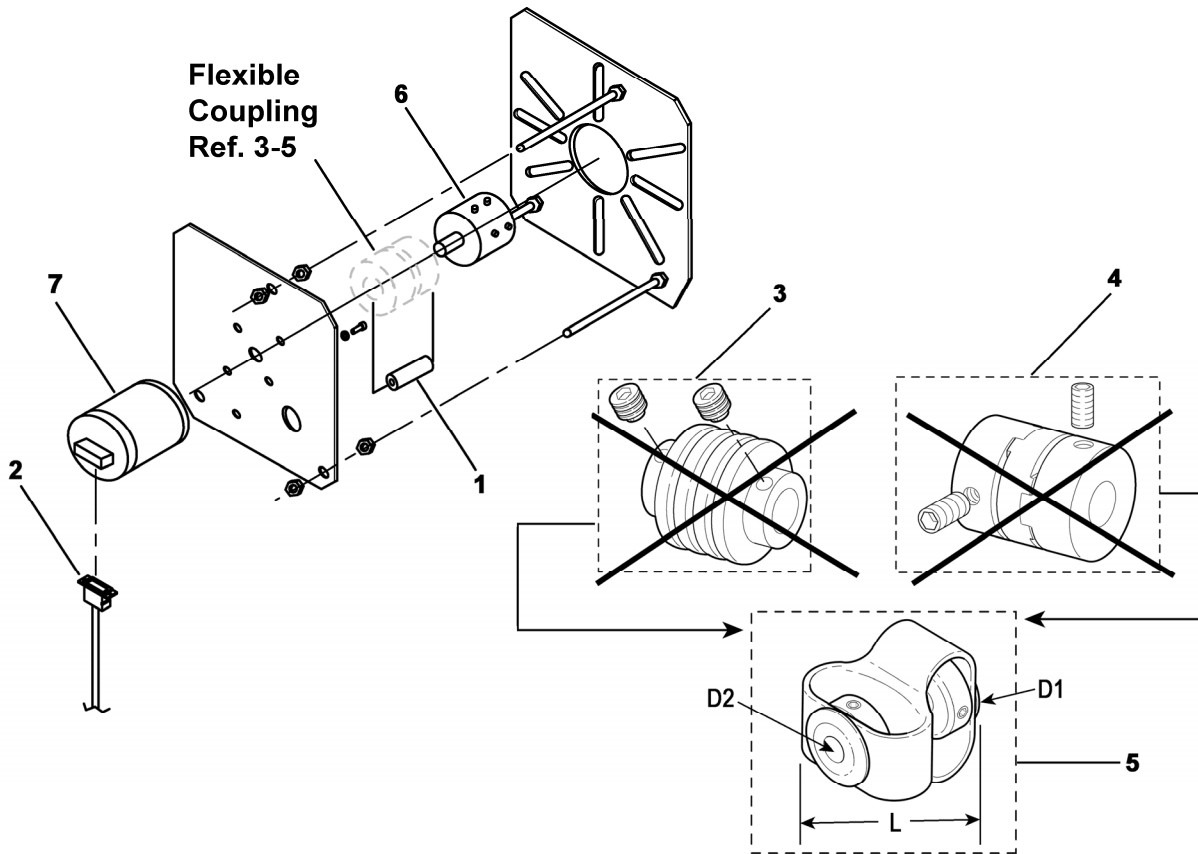
**CAA21410AAA Modernization Encoder Type 4
No. 70, 72, 74, & 77A Machines Motor Mounting Kits**



| CAA21410AAA | | | | |
|-------------|----------------|------|---|---|
| REF. No. | PART No. | TYPE | DESCRIPTION | GEARLESS MACHINE APPLICATIONS |
| 1 | CAA21410AAA108 | 4 | Kit, Motor Encoder Mounting for Gearless Machines, See p. 23 for Encoders | No. 70, No. 72 Machines |
| | CAA21410AAA109 | | | No. 74 Machine (sheave or commutator end), No. 77A Machine (commutator end) |
| | CAA21410AAA111 | | | No. 77A Machine (sheave end) |

Replacement Parts for CAA21410AAA Encoder Assemblies

06-AAA21430E



| CAA21410AAA | | |
|-------------|----------------------|--|
| REF. No. | PART No. | DESCRIPTION |
| 1 | CAA135A1 | Bushing, 1.250 in. L (alignment tool), for Geared Machine |
| | CAA135A3 | Bushing, 1.620 in. L (alignment tool), for Gearless Machine |
| 2 | --- | Cable Assembly (encoder), See p. 24 |
| 3 | 215BN5 ABA215BX2 | Coupling, Metallic "Bellows" Type, D1 = 0.25 in. x D2 = 0.25 x L = 1.32 in., (equipment mfg. ~November 1988–February 1994) |
| 4 | 215BN13 ABA215BX1 | Coupling, 3-Piece, D1 = 0.375 in. x D2 = 0.375 x L = 1.89 in., (equipment mfg. ~March 1994–April 1998) |
| 5 | ABA215BX1 | Coupling, D1 = 0.375 in. x D2 = 0.375 x L = 1.75 in., (for Gearless Machines: Nos. 70, 72, 74D, 77A, 131HT, 139HT, 155HT, 219HT, 269HT and Non-Otis) |
| | ABA215BX2 | Coupling, D1 = 0.25 in. x D2 = 0.25 x L = 1.12 in., (for Geared Machines) |
| | ABA215BX4 | Coupling, D1 = 0.375 in. x D2 = 0.25 x L = 1.75 in., (for some gearless machines and non-Otis machines) |
| 6 | --- | Coupling, Type CBA00218AAA, See p. 22 |
| 7 | --- | Encoder, See p. 23 |

06-AAA21430E

Type CBA00218AAA Coupling

Mfg. Period Approx. Before April 2001

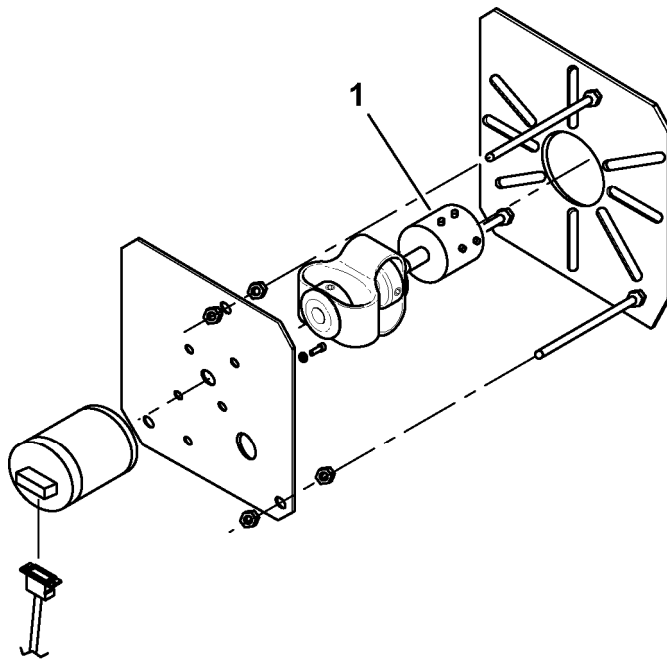


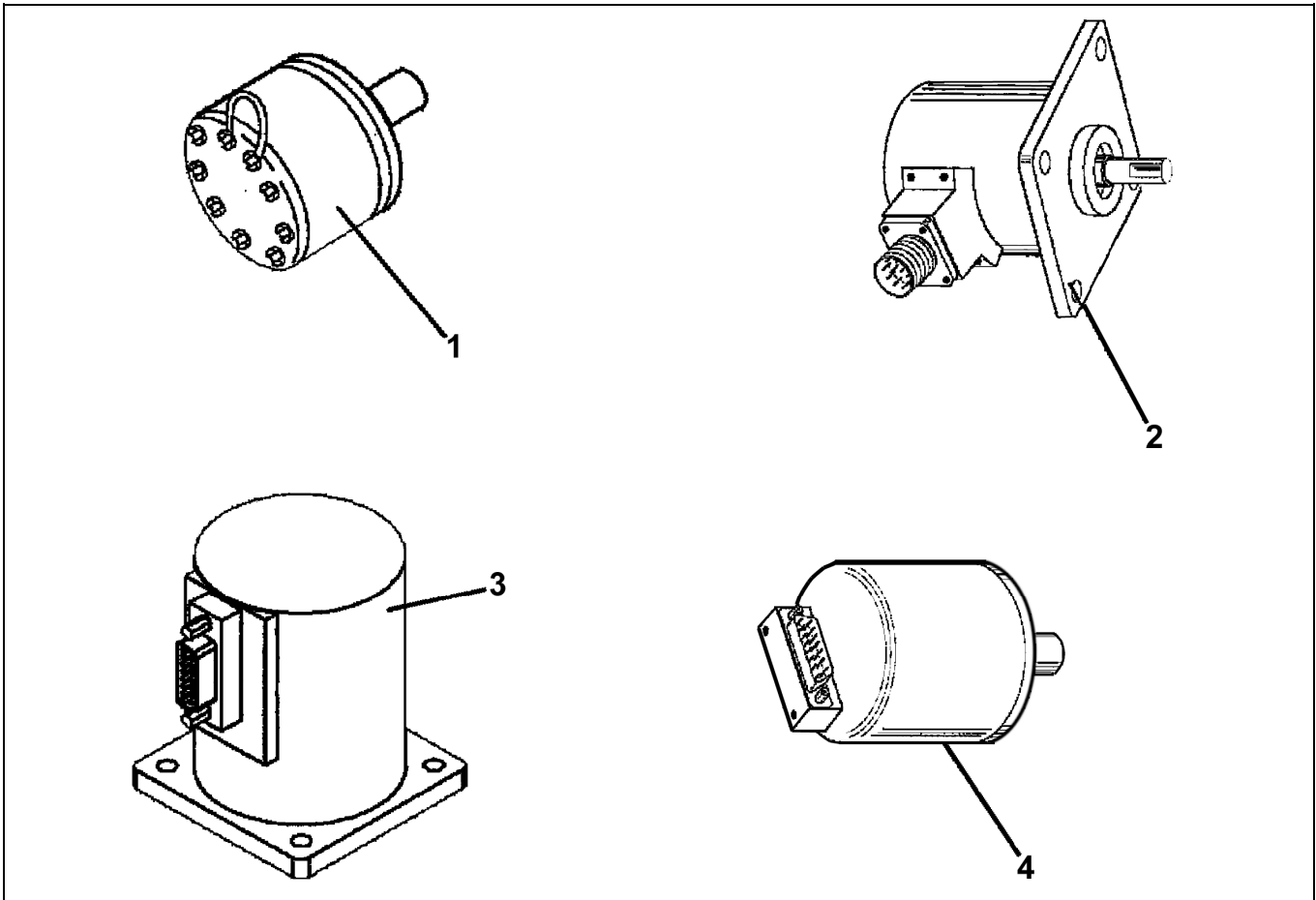
Table: Coupling Selection by Motor Type

| Part Number: CBA00218AAA _ _ _ | | | |
|--------------------------------|---------|--------|-----|
| 001 | 002 | 003 | 004 |
| 14AT | 3AC | 17AC | 63G |
| 0-1/4S | 3-1/2AC | 89F | 65G |
| 1/2AC | 5AC | 77G | 63L |
| 3/4AC | 7-1/2AC | 98G | --- |
| 1AC | 0-1/2S | 112G | --- |
| 35ES | 2-1/4S | 1-1/4S | --- |
| 40ES | 2AC | 1-1/2S | --- |
| 39F | 2-1/2AC | 2-1/4S | --- |
| --- | 3-3/4AC | 2-1/2S | --- |
| --- | 4AC | 4-1/2S | --- |
| --- | 60ESL | 45ES | --- |
| --- | 49ES | 10AC | --- |
| --- | 51G | 15AC | --- |
| --- | 60KSL | 3-1/2S | --- |
| --- | --- | 89L | --- |
| --- | --- | 98L | --- |
| --- | --- | 101KS | --- |
| --- | --- | 77L | --- |
| --- | --- | 83ES | --- |
| --- | --- | 95ES | --- |
| --- | --- | 139G | --- |
| --- | --- | 76KS | --- |
| --- | --- | 83KS | --- |

| REF. No | PART No. | DESCRIPTION |
|---------|--------------------|---|
| | CAA21410AAA | |
| 1 | CBA00218AAA001 | Coupling, 1.625 in. L x 0.875 in. Diameter |
| | CBA00218AAA002 | Coupling, 2.0 in. L x 1.281 in. Diameter |
| | CBA00218AAA003 | Coupling, 2.375 in. L x 1.530 in. Diameter |
| | CBA00218AAA004 | Coupling, 2.0 in. L x 1.156 in. Diameter |
| | | Use Motor List Table to Determine Coupling Part Number. |

Encoders for CAA21410AAA Assemblies

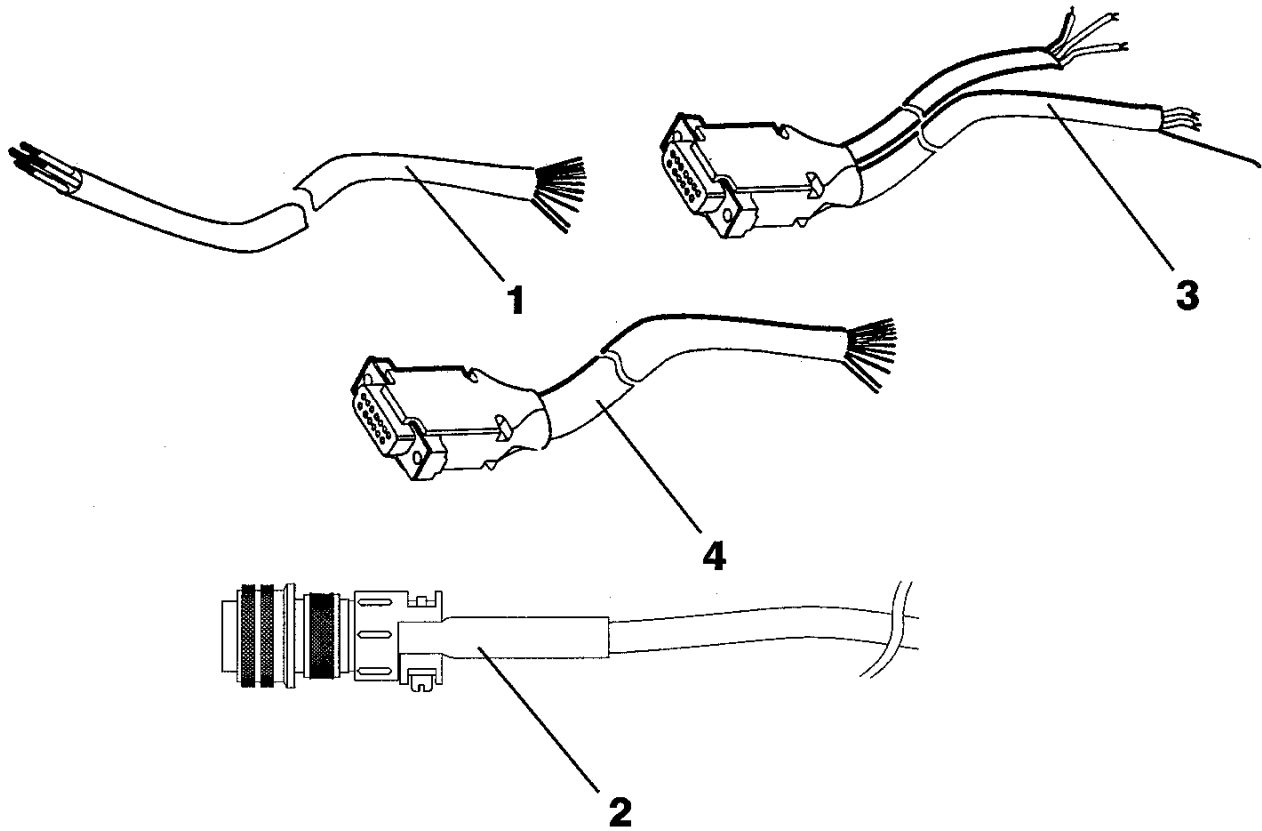
06-AAA21430E



| CAA21410A | | APPLICATION | | |
|-----------|----------------------|---|--|--|
| REF. No. | PART No. | DESCRIPTION | CONTROLLER | MACHINE |
| 1 | 633B1 | Encoder, 1,024 Pulses/Revolution | Gamma D, E311M, E335MW | Geared |
| 2 | A633D1 | Encoder, 10,000 Pulses/Revolution | E411M, E411M-HS | 70, 72, 74D, 77A |
| 3 | AAA659C4 AAA659C3 | Encoder, 10,000 Pulses/Revolution | E411MV | 70, 72, 74D, 77A, 131HT– 269HT & Non-Otis < 200 RPM |
| | AAA659C3 | Encoder, 10,000 Pulses/Revolution | E411MMS, Elevonic® R-Series, Elevonic® Skyrise® Modernization | 70–77A, 131HT–269HT & Non-Otis |
| | AAA659C4 | Encoder, 5,000 Pulses/Revolution | E411MMS, E411MV, Elevonic® R-Series, Elevonic® Skyrise® Modernization | 139HT, 155HT & Non-Otis > 200RPM |
| 4 | AAA633F2 AAA633F3 | Encoder, 90° Connector 1,024 Pulses/Revolution | E311MV, E335M | Geared |
| | AAA633F3 | Encoder, 90° Connector 1,024 Pulses/Revolution | E411MMS, Elevonic® R-Series | Geared |

06-AAA21430E

Cables for CAA21410AAA Assemblies



| CAA21410A | | | APPLICATION | | |
|-----------|-----------|------------------------|---|--|-------------------------------|
| REF. No | PART No. | DESCRIPTION | CONTROLLER | MACHINE TYPE | ENCODER |
| 1 | AAA174NK7 | Cable Assembly, 50 ft. | E311M, Gamma D | Geared | 633B |
| | AAA174NK9 | Cable Assembly, 50 ft. | E335MW | Geared | 633B |
| 2 | AAA174NK8 | Cable Assembly, 50 ft. | E411M | 70, 72, 74, 77A, 131HT–269HT & Non-Otis | A633D |
| 3 | AAA174SX1 | Cable Assembly, 50 ft. | E311MV, E411M, & E411MV | 70, 72, 74D, 77A, 131HT–269HT & Non-Otis < 200 RPM | AAA633F AAA659C |
| | | | | 139HT, 155HT & Non-Otis > 200 RPM (E411MV Only) | |
| 4 | CAA174G1 | Cable Assembly, 50 ft. | E335MW | Geared | AAA633F |
| | AAA174YC1 | Cable, 50 ft. | E411MMS, Elevonic® R-Series, Elevonic® Skyrise® Modernization | All Applications | AAA633F AAA659C AAA633W |
| | AAA174YC2 | Cable, 100 ft. | | | |