


139HT Machine

Spare Parts Leaflet

06-AAA7146E

June 21, 2023 / Page 1 of 13

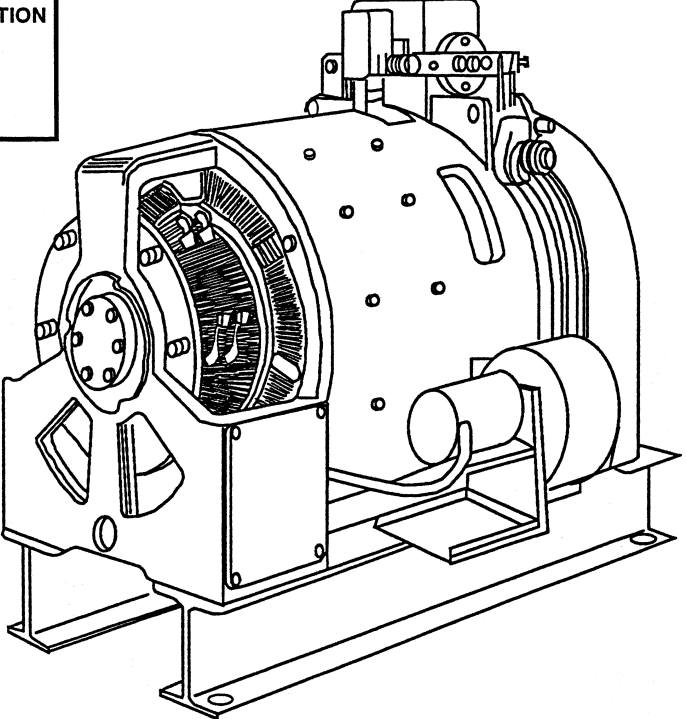
		OTIS ELEVATOR COMPANY	
GEARLESS MACHINE			
SALES	_____	SERIAL	_____
VOLTS	DC	DC	DC
AMPS	FL	A	HP
RPM	INSULATION CLASS		
TIME RATING	HR	°C	
MAX AMBIENT TEMP 40° c			
FIELD VOLTS	DC		
AMPS	A		
MATERIALISTS			
ARMATURE	FIELD		
INTERPOLE	BRUSH		
MACHINE & MOTOR PTS			
BRAKE COIL			
BRAKE RATING	VOLTS	DC	
	WATTS	W	
	DUTY	HR	

VINTAGES
AAA7146E
ABA7146E
ABB7146E

NOTE!: Machines built to this assembly drawing, A..7146E, can be manufactured by several Otis manufacturing facilities. Some parts described in the leaflet are dependent upon the manufacturing source. Use the guide to the left to determine the source of your machine.

R - AAA7146E — Data tag located on left side of frame when facing drive sheave

MANF. SOURCE	LETTER DESIGNATION
CTOEC, China	D
Tatung, Taiwan	E
United Kingdom	L
NAO, Bloomington	R



This document does not contain any technical data subject to EAR or ITAR

SERVICE ENGINEERING
Otis Elevator Company
Bloomfield, Connecticut USA

Unpublished Work—© Otis Elevator Co.; 2023

Leaflet Description

This leaflet provides spare parts information for type 139HT machines. The 139HT gearless machine was manufactured in four different locations. Check vintage data plate on the machine to identify the location of origin.

Leaflet Revisions

Date Revised	Subject Matter Expert	Reason for Revision
April 1997	- - -	New Leaflet
June 27, 2006	Val Sheynkman	Updated parts and illustrations throughout.
March 2, 2011	Val Sheynkman	Corrected part number in ref. 11 on p. 8
January 18, 2012	Val Sheynkman	Corrected part number in ref. 11 on p. 8
August 12, 2015	Gary Mendrala	Updated liner part number on p. 10
October 10, 2018	Gary Mendrala	Updated illustration on p. 6
March 18, 2020	Gary Mendrala	Added p/n 177CA5 on p. 11
May 19, 2021	Gary Mendrala	Updated sheave description; Added vintage information
June 21, 2023	Gary Mendrala	Added new p/ns AAA251BT5 and AAA251BT8 on p. 10

Related Drawings

Drawing No.	Title
AAA7146E	General Arrangement and Assembly 139HT Machine and 139HT MOD
ABA7146E	General Arrangement and Assembly 139HT Machine and 139HT MOD
ABB7146E	General Arrangement and Assembly 139HT Machine and 139HT MOD

Related Documents

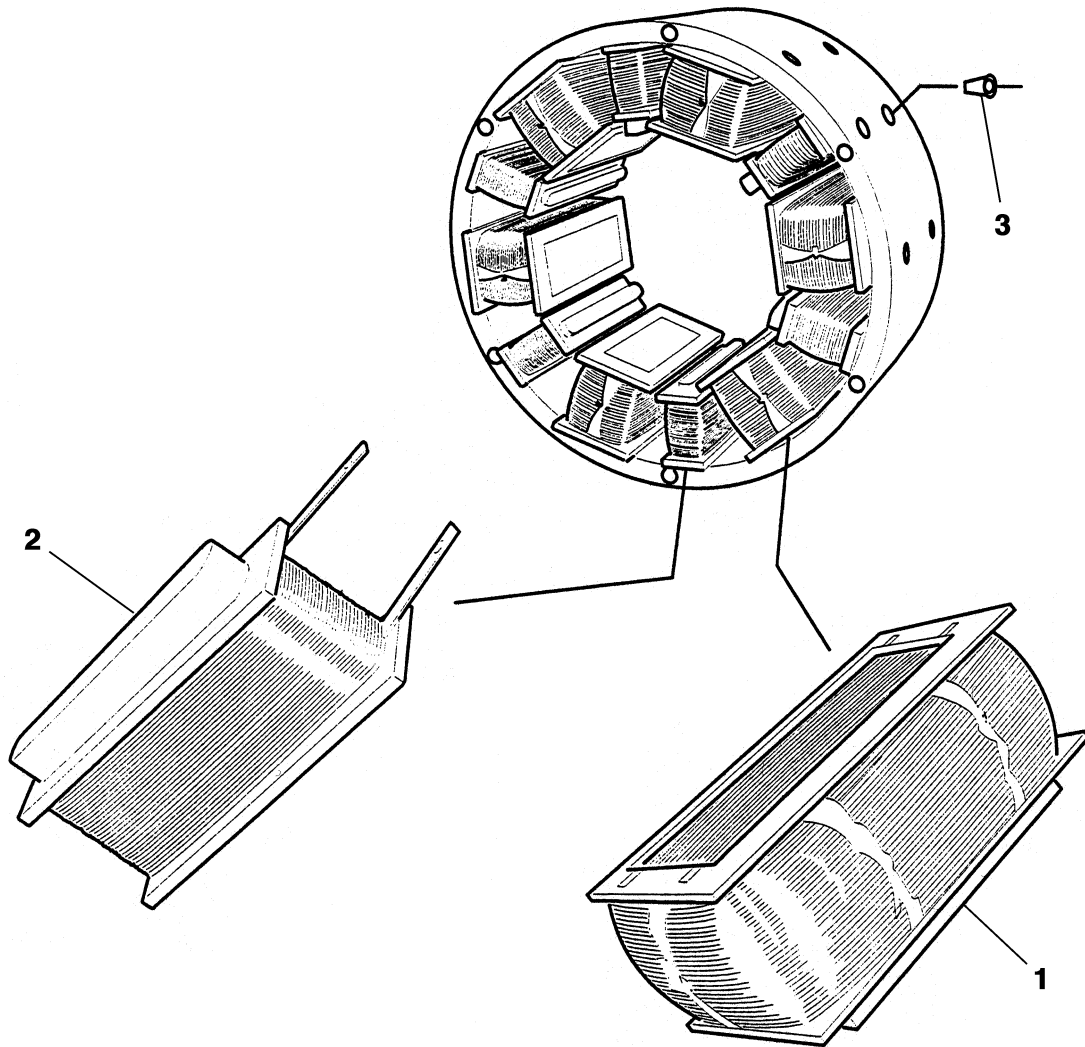
Document ID	Title
SPL 06-7119AB	Shaft Encoders
SPL 06-AAA21430D	Encoder Assembly, Gearless Machines (Superseded by 06-AAA21430E)
SPL 06-AAA21430E	Encoders for Geared, Gearless & Mod Machines
SPL 06-7146B	139HT Gearless Machine Yonkers Manufacture
SPL 06-ALY7146B	139HT Gearless Machine China Manufacture
SPL 06-LY7146B	139HT Gearless Machine Liverpool Manufacture
TIP 6.1.0-19	Gearless Machine Commutator Guard Installation
TIP 6.1.1-14	Installation Procedure for Full Cover Sheave Guard (w/Carpet Wiper) for 130HT, 131HT, and 139HT Machines
TIP 6.0-1	Replacement of Brake Linings
TIP 6.0-16	Machine Brake Switch Kit

Subject Matter Expert

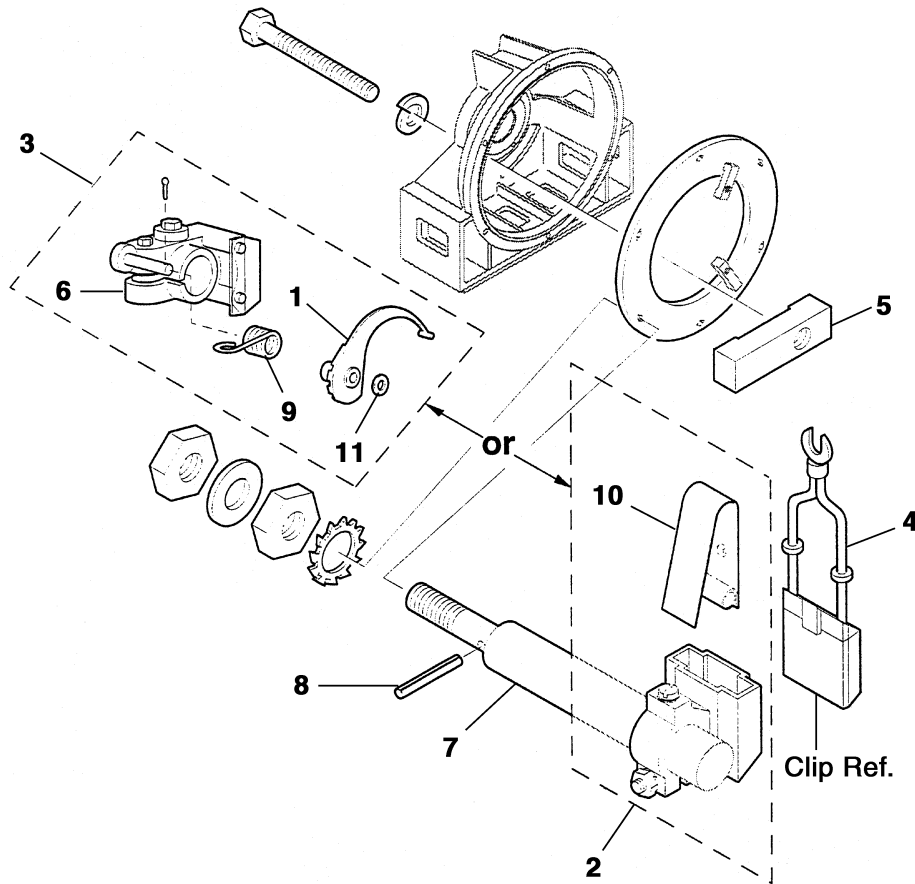
Name	Department
Gary Mendrala	Otis Service Engineering

139HT Machine Field Coils

06-AAA7146E



REF. No.	PART No.	DESCRIPTION			
	AAA7146E ABA7146E ABB7146E				
1	AAA221DS1	Coils, Field, <table border="1" style="display: inline-table; vertical-align: middle;"><tr><td>ORDER</td></tr><tr><td> </td></tr><tr><td> </td></tr></table> Set of 6	ORDER		
ORDER					
2	AAA219AV4 2700ADD6	Coil, Interpole, <table border="1" style="display: inline-table; vertical-align: middle;"><tr><td>ORDER</td></tr><tr><td> </td></tr><tr><td> </td></tr></table> Set of 6	ORDER		
ORDER					
3	444AX34	Plug, Plastic			

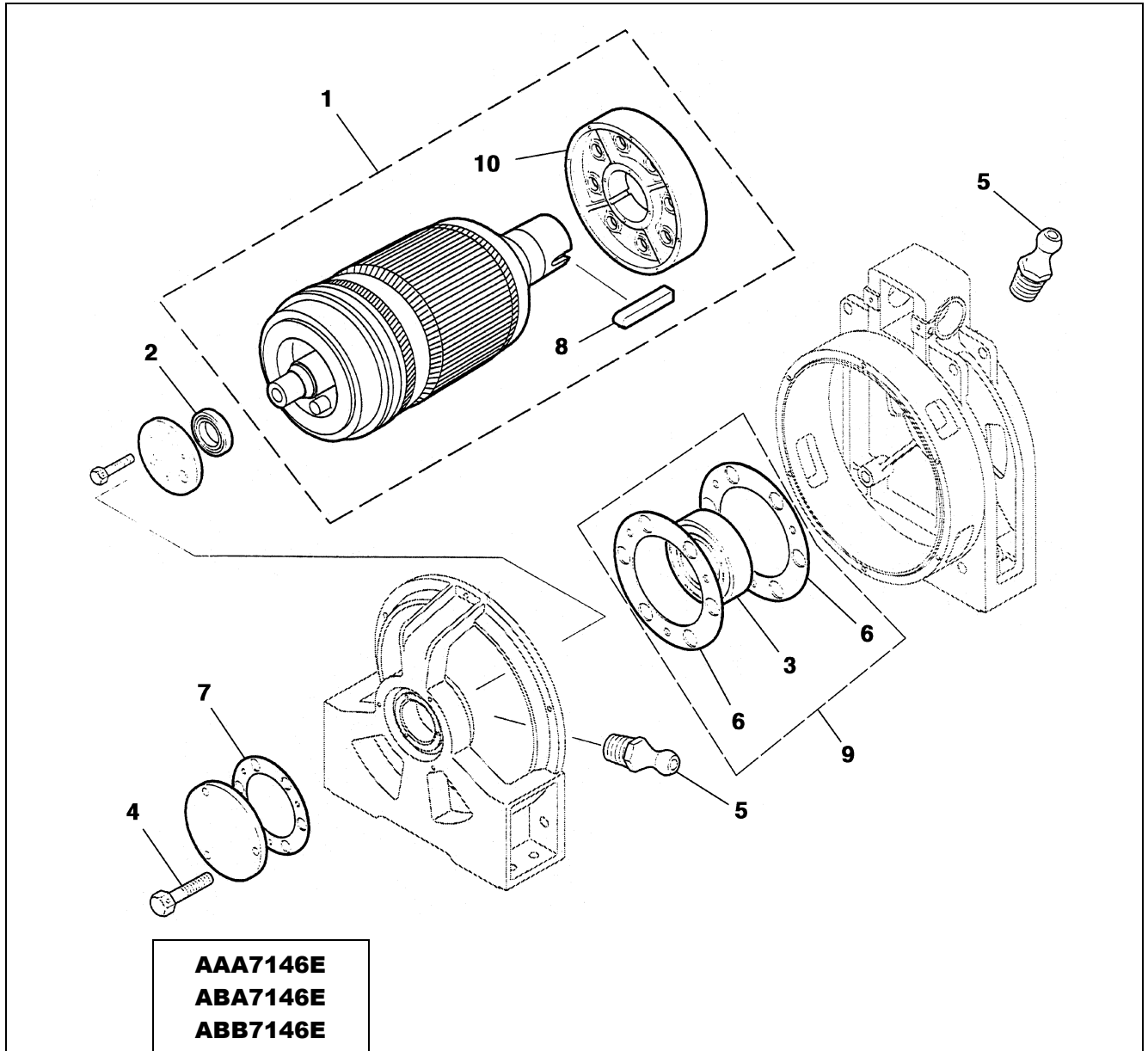


**AAA7146E
ABA7146E
ABB7146E**

REF. No.	PART No.	DESCRIPTION
1	AAA288AAJ1	Arm, Spring
2	6134J7	Assembly, Constant Force Brush Holder, w/Spring (machines manufactured in NAO [R], ETO [L], & CTOEC [D])
3	AAA6134T1	Assembly, Spring Torsion Brush Holder (machines manufactured in ETO-SERV [L] or TATUNG [E])
4	240P8	Brush, Carbon, w/o Clip (for p/n 6134J7 brush holder)
	240P9	Brush, Carbon, w/Clip (for p/n AAA6134T1 brush holder)
5	AAA336LP1	Clamp, Brush Ring
6	AAA178AD3	Holder, Brush (spring torsion)
7	AAA474AAC1	Stem, Brush
8	81AX2	Pin
9	92A4	Spring
10	93FC2	Spring, Constant Force
11	128AF12	Washer

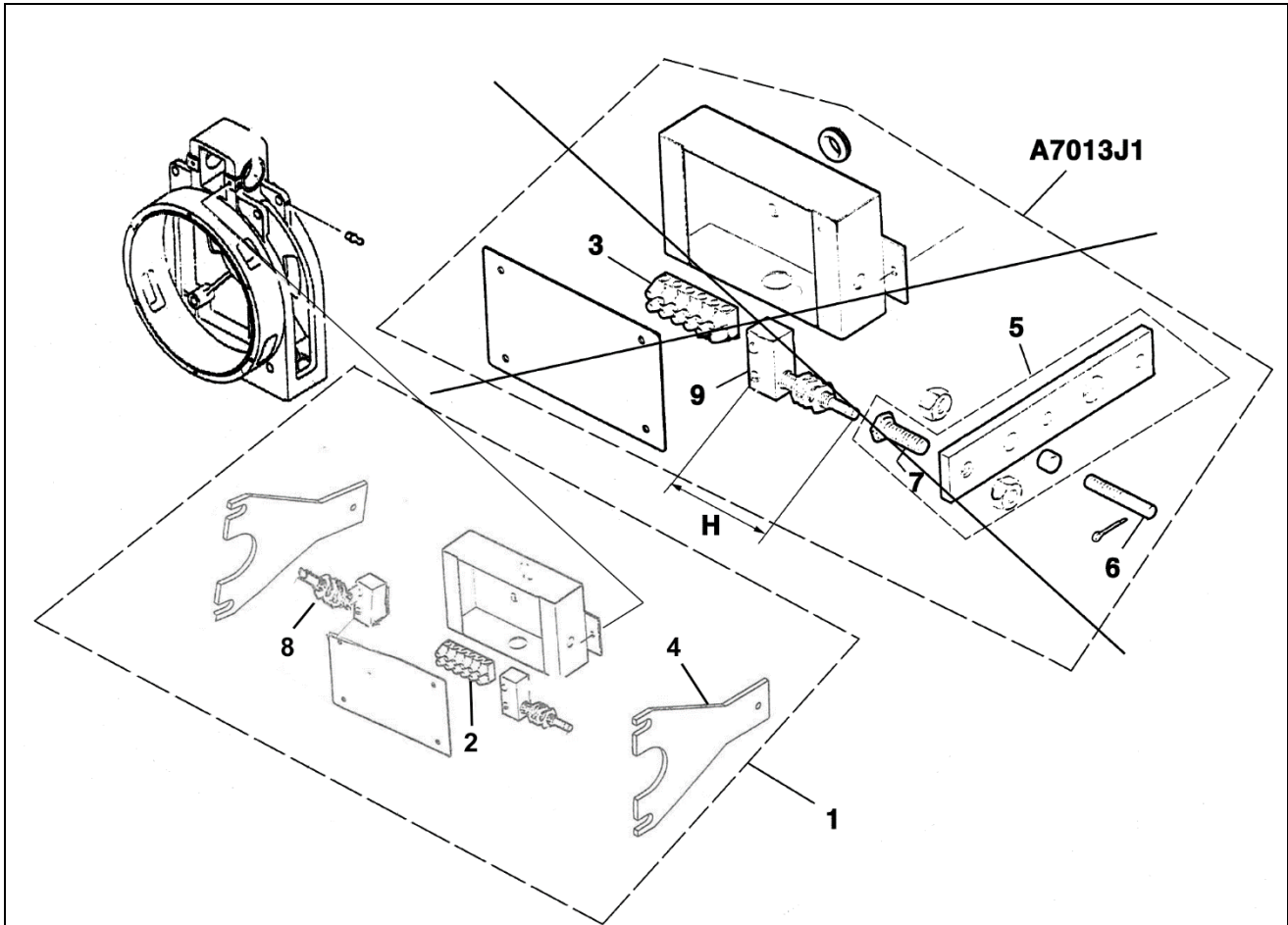
139HT Machine Armature

06-AAA7146E



AAA7146E
ABA7146E
ABB7146E

REF. No.	PART No.	DESCRIPTION
1	AAA245AS1	Assembly, Armature (contact spare lending)
2	207Z73	Bearing, Ball, 5.5 in. \varnothing
3	209G14	Bearing, Roller, 9.84 in. \varnothing
4	AAA58AAA1	Bolt, Hex Head, M20 x 50 mm
5	AAA435AX4	Fitting, Grease
6	AAA376FT3	Gasket, Paper, 311 mm \varnothing , 0.12 mm Thick
7	AAA376FT2 LO376BV1	Gasket, Vellumoid, 197 mm \varnothing , 1.5 mm Thick
8	192G107	Key, Brake Pulley, 3/4 x 3.0 in.
9	LO5000E431	Kit, Bearing Arm Gaskets
10	AAA198AAA2	Pulley, Brake

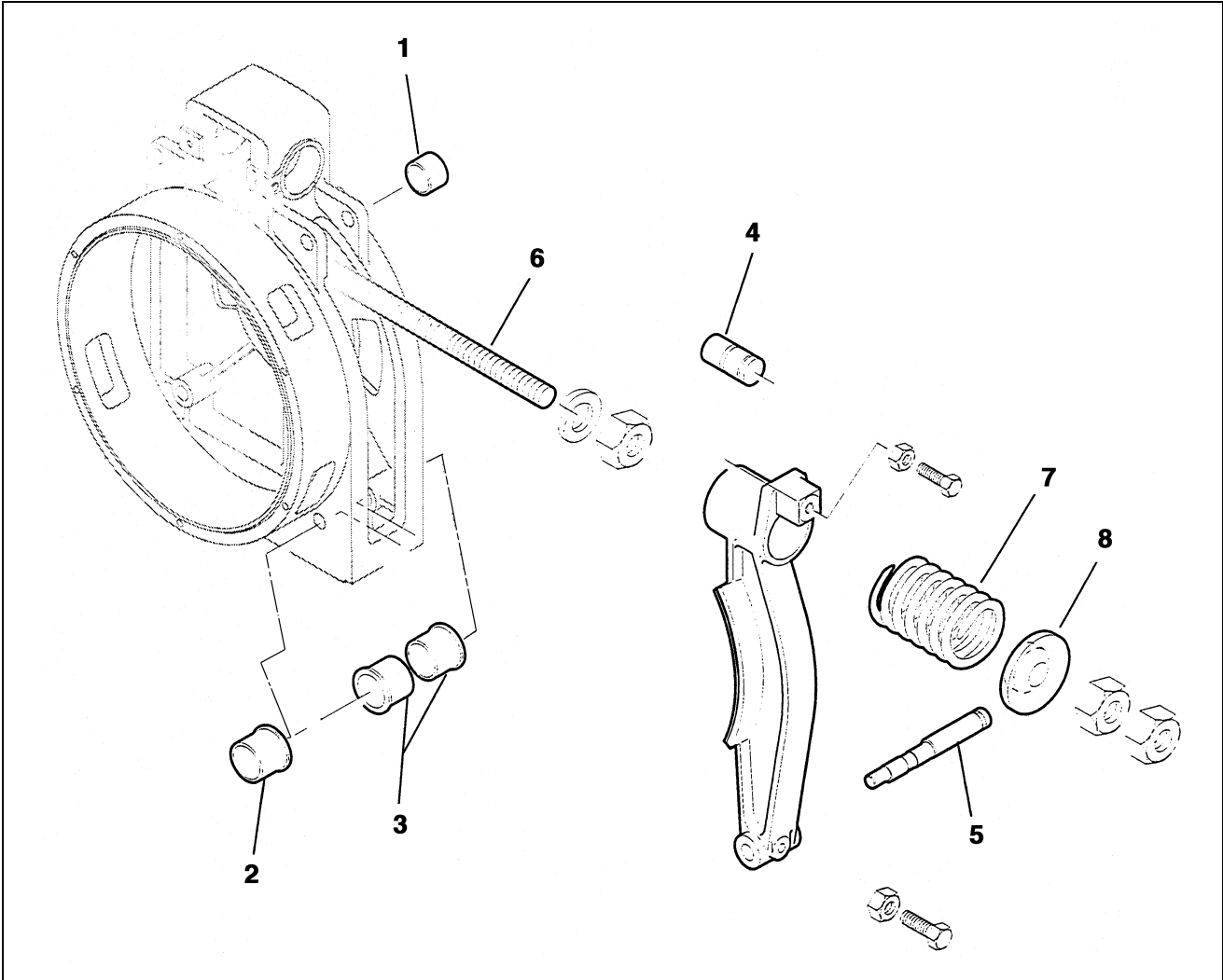


AAA7146E
ABA7146E
ABB7146E

REF. No.	PART No.	DESCRIPTION
1	A7013J1 2700ADE1 7013J1	Assembly, Brake Switch
2	303G2	Board, Terminal (for p/n 7013J1 switch)
3	AAA303DT6	Board, Terminal (for p/n A7013J1 switch)
4	288WE1	Lever, Brake Switch (for 7013J1 switch)
5	AAA288AAF2	Lever, Brake Switch (for A7013J1 switch)
6	AAA96AAB2	Pin, Threaded, 10 mm
7	ABA58AAB1	Screw, Brass, Hex Head, M12 x 35 mm
8	177Y1	Switch, Brake (for 7013J1 switch), H = 1.5 in.
9	177AP1	Switch, Brake (for A7013J1 switch) H = 3.734 in.

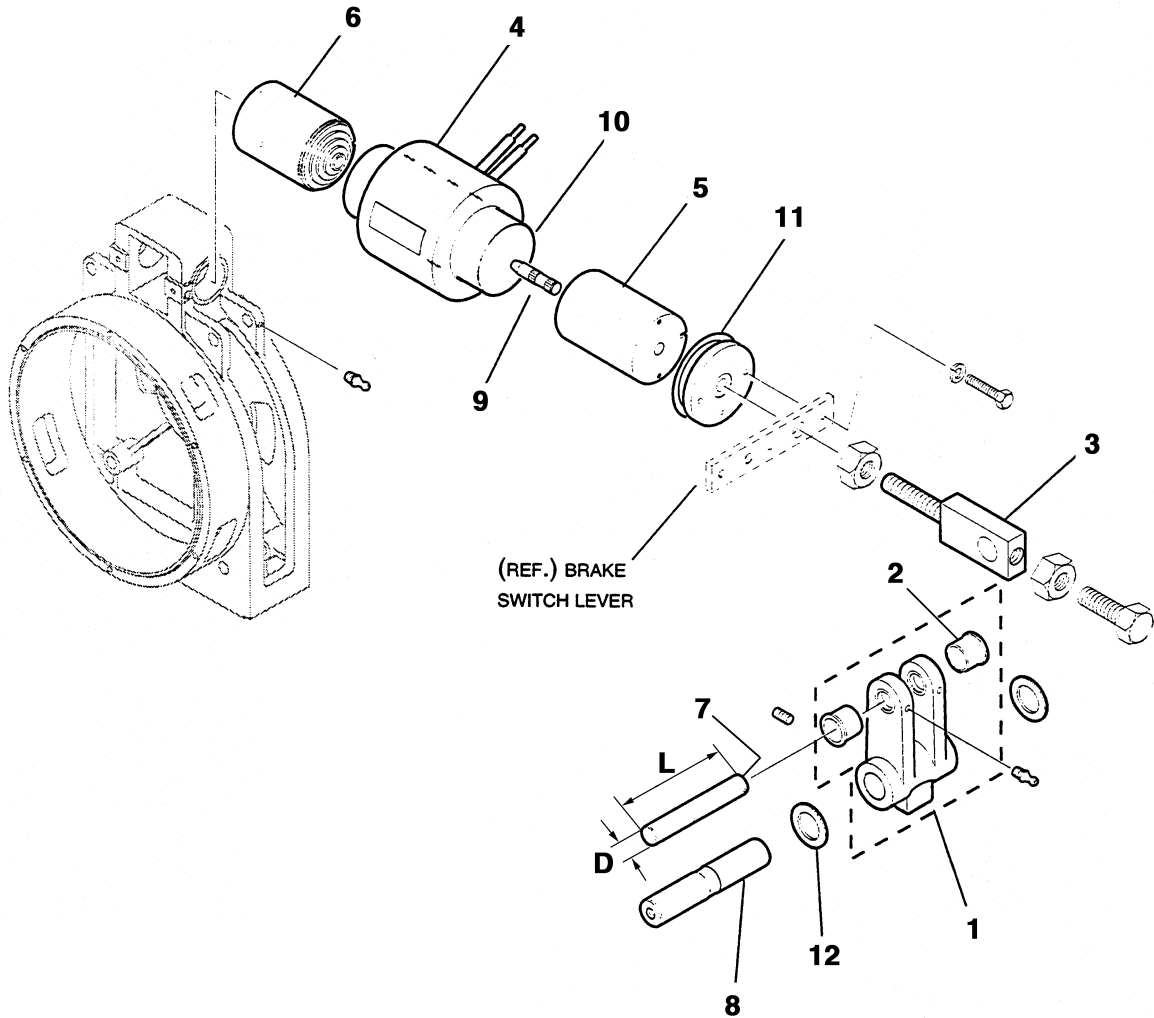
Machine Brake Lever

06-AAA7146E



**AAA7146E
ABA7146E
ABB7146E**

REF. No.	PART No.	DESCRIPTION
1	209A7	Bearing, 1.5 in. \varnothing , 1.25 in. \varnothing , 1 in. Long (in brake frame at upper pivot)
2	AAA335AE2	Bearing, 22.253 mm Bore \varnothing (in brake frame at lower pivot)
3	AAA335AE1	Bearing, 31.763 mm Bore \varnothing (in brake frame at lower pivot)
4	81BN2	Pin
5	AAA77AAD2	Pin, Eccentric, 245 mm
6	AAA96AAA1	Rod
7	90JD4	Spring
8	ABA133AAB1	Washer

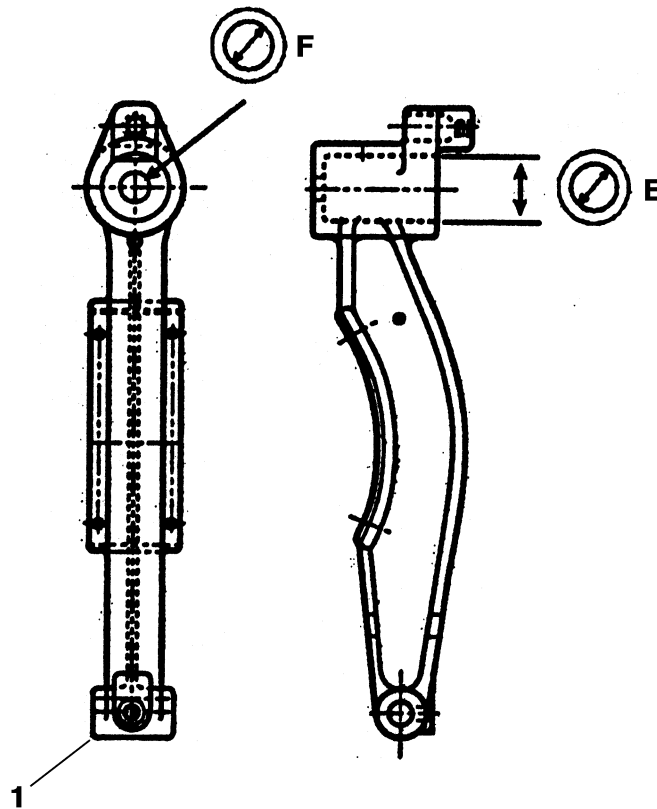


AAA7146E
ABA7146E
ABB7146E

REF. No.	PART No.	DESCRIPTION
1	AAA288AAG2	Assembly, Lever, w/Two p/n 209A6 Bearings
2	209A6	Bearing, 1.250 in. Ⓢ
3	AAA65FK1	Bolt
4	AAA222FS1 AAA222FS2	Coil, Brake, 2650 Turns
5	AAA400AAB1	Magnet Core, Female
6	AAA400AAA1	Magnet Core, Male
7	AAA82AAB1	Pin, L = 136,53 mm, D = 22,18 mm
8	AAA77AAF2	Pin
9	AAA77AAG1	Pin, Guide
10	136R10	Tube, Magnet Core
11	128AG53	Shim, Washer
12	128AL2	Washer, Bronze

Brake Arm and Lining Assembly

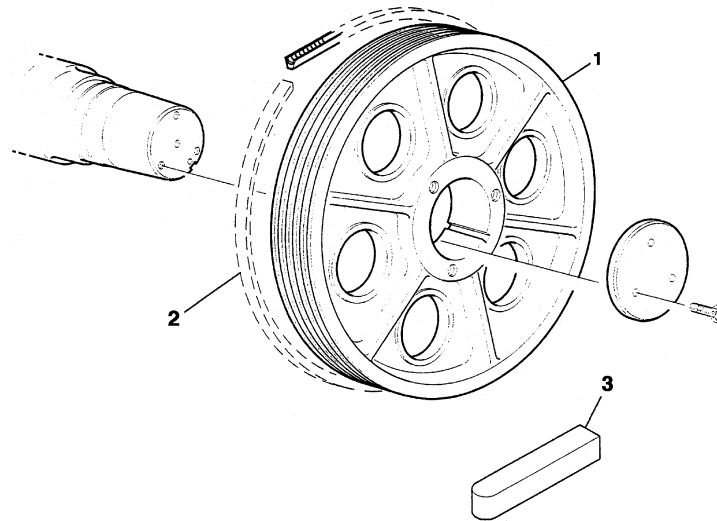
06-AAA7146E



REF. No.	PART No.	DESCRIPTION
	AAA7146E ABA7146E ABB7146E	
1*	ACA286AAA2	Arm, Brake, E = 76 mm, F = 33 mm
	ACA286AAA4	Arm, Brake, E = 92 mm, F = 51 mm

* For details see TIP 6.0-1, *Replacement of Brake Linings*.

NOTE: All gearless machines must use brake arms that are lined with green gripper lining, supplied factory-bonded by OSC to our offices. OSC makes every attempt to rework same brake arms.



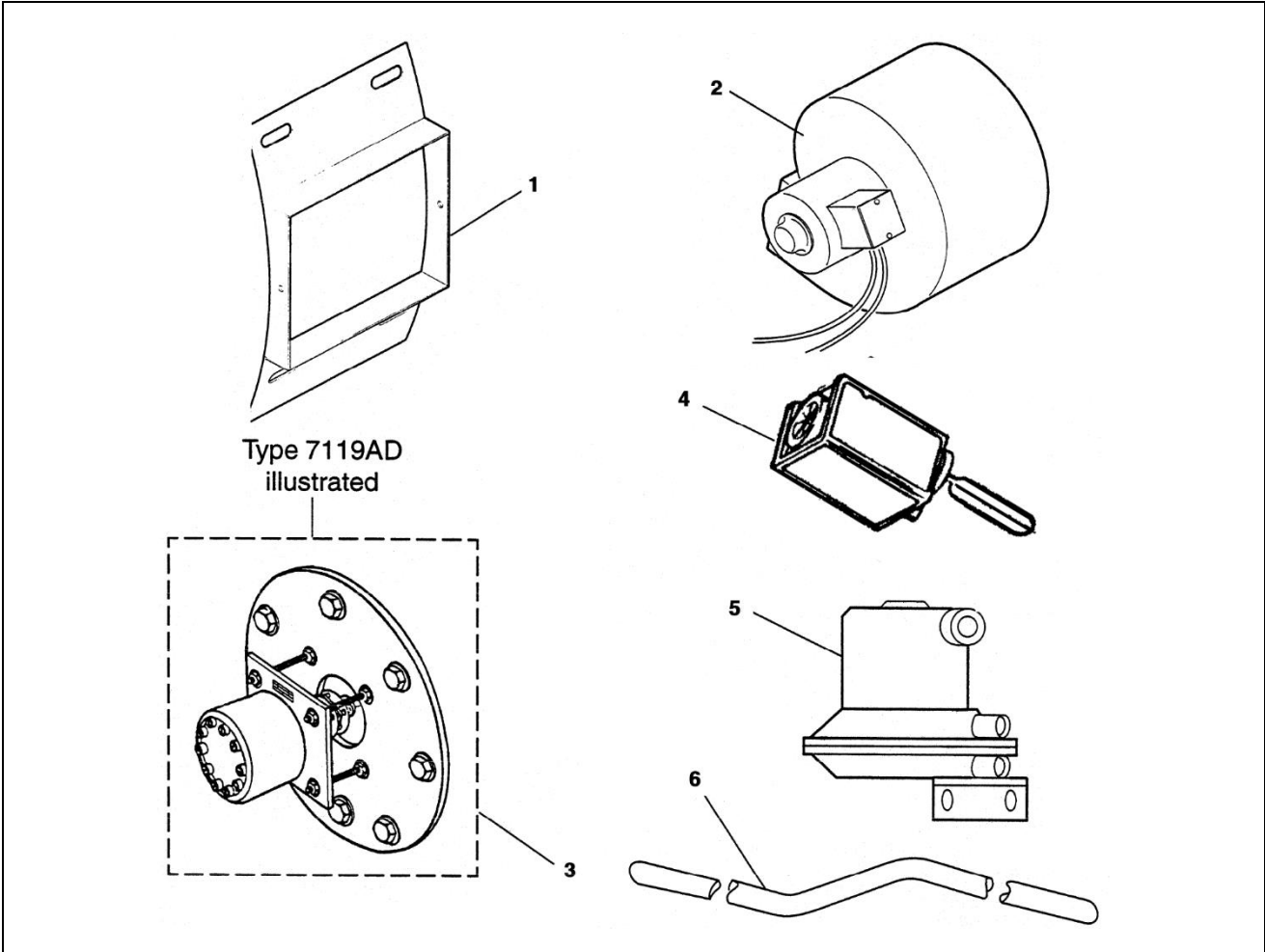
**AAA7146E
ABA7146E
ABB7146E**

REF. No.	PART No.	DESCRIPTION	DEG. UNDERCUT	NO. OF ROPES	SHEAVE DIA.	MANUF. SOURCE			
1	AAA260CV1	Drive Sheave	1/2 in. Poly Insert	7	610 mm (24 in. Nom.)	*NAO, ETO, CTOEC			
	AAA260CV5		90						
	AAA260CV6		105						
	AAA260CV3		1/2 in. Poly Insert	6					
	AAA260CV7		90						
	AAA260CV8		105						
	AAA260AAA17		90	6	685 mm (27 in. Nom.)				
	AAA260AAA18		105						
	AAA260AAA11		1/2 in. Poly Insert	5					
	AAA260AAA15		90						
	AAA260AAA16		105						
	AAA260AAA9		1/2 in. Poly Insert	4					
	AAA260AAA13		90						
	AAA260AAA14		105						
	AAA260CB5		90	7	610 mm		*ETO-SVC, TATUNG		
	AAA260CV6		105						
AAA260CV7	90								
AAA260CV8	105	6							
2	A251BT15 A251BT13 B251BT13 AAA251BT5	Insert, Polyurethane (for AAA260CV1 & 3), Diameter Joined Liner	<table border="1"><tr><td>ORDER</td></tr><tr><td></td></tr><tr><td></td></tr></table>	ORDER					Qty. 6 or 7 (1/2 in. Rope, 24 in.)
	ORDER								
	A251BT3 B251BT3 AAA251BT8	Insert, Polyurethane (for AAA260AAA9 & 11), Diameter Joined Liner	<table border="1"><tr><td>ORDER</td></tr><tr><td></td></tr><tr><td></td></tr></table>	ORDER			Qty. 4 or 5 (1/2 in. Rope, 27 in.)		
ORDER									
3	192D37	Key, Drive Sheave, 3/4 x 4-1/4 in.							

* Manufacturing source of the machine. Refer to data plate on your machine and manufacturing source—letter designation—shown on the cover of this leaflet.

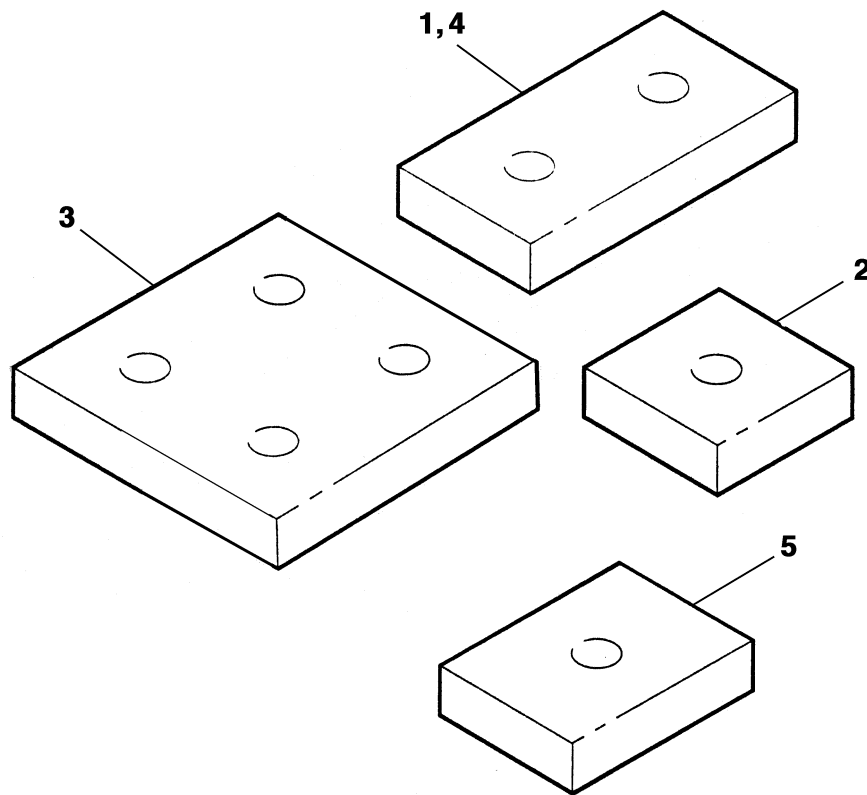
139HT Machine Blower, Encoder

06-AAA7146E



AAA7146E
ABA7146E
ABB7146E

REF. No.	PART No.	DESCRIPTION
1	270Z2	Adaptor, for Blower Motor
2	6091BA1 6091BA2	Assembly, Blower, NAO
	AAA6091AF1	Assembly, Blower, ETO
3	---	Assembly, Encoder, Type 7119AD, E401, SPL 06-7119AB
	---	Assembly, Encoder, Type A**21430D, E401, SPL 06-AAA21430D
	---	Assembly, Encoder, Type A**21430T1, SPL 06-AAA21430E
4	177CA1 177CA3 177CA5	Switch, Air Flow
5	AAA177DY1	Switch, Pressure, ETO
6	AAA137AT1	Tube, Sensor, ETO

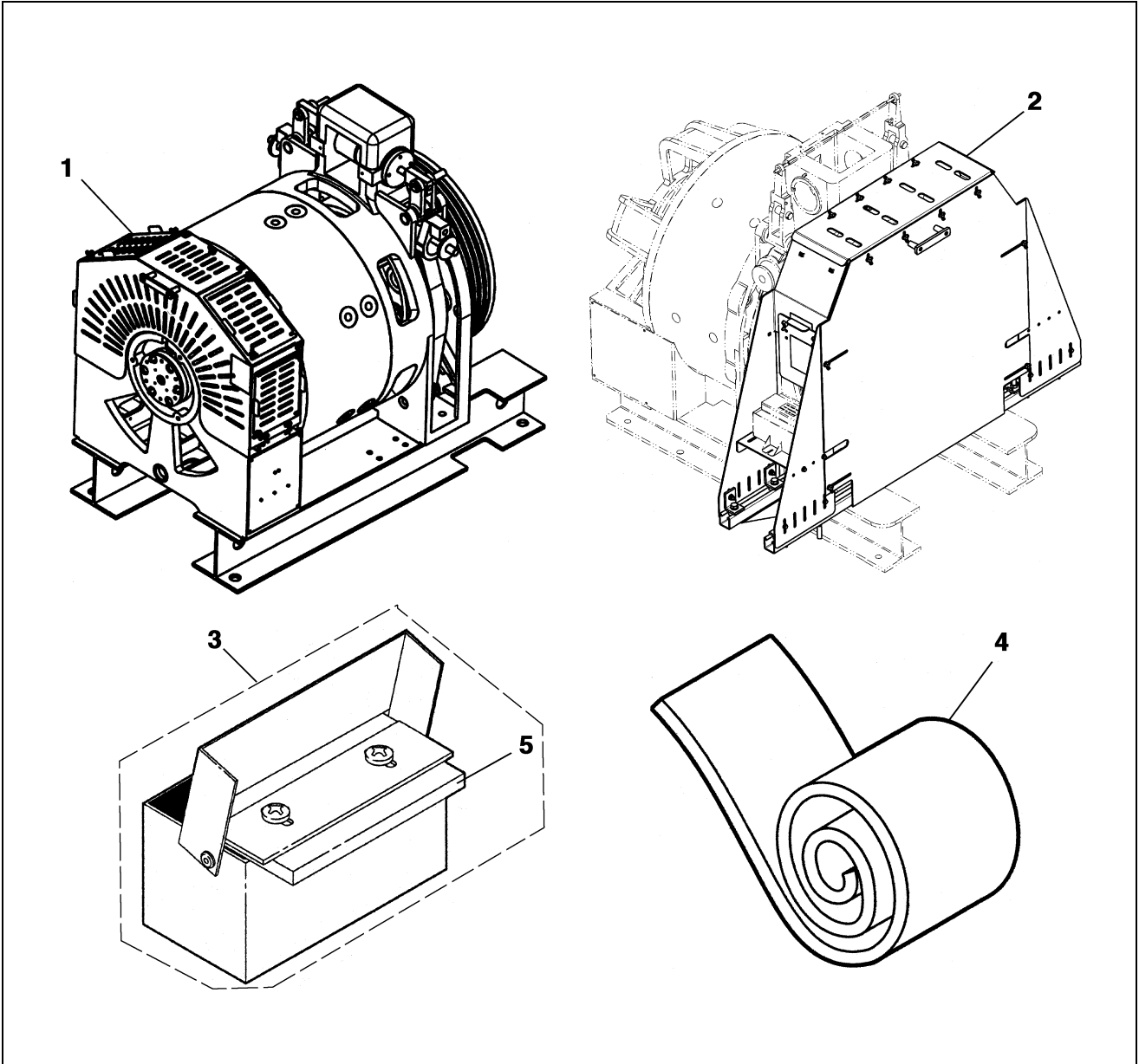


**AAA7146E
ABA7146E
ABB7146E**



REF. No.	PART No.	DESCRIPTION
1	310BE2	Pad, Rubber, 6 x 3 w/Two Holes, Hole $\varnothing = 1$ in.
2	310BE3	Pad, Rubber, 3 x 3 w/One Hole, Hole $\varnothing = 1$ in.
3	310BE1	Pad, Rubber, 6 x 6, w/Four Holes, Hole $\varnothing = 1$ in.
4	310JJ1	Pad, Polyurethane, 6 x 3, w/Two Holes, Hole $\varnothing = 1$ in.
5	310JJ3	Pad, Polyurethane, 6 x 3, w/One Hole, Hole $\varnothing = 1$ in.

Sheave Guard for 139HT Machine

06-AAA7146E



AAA7146E
ABA7146E
ABB7146E

REF. No.	PART No.	DESCRIPTION
1	---	Guard, Commutator End,  TIP 6.1.0-19
2	---	Guard, Sheave,  TIP 6.1.1-14
3	AAA508AH3	Lubricator
4	AAA297AY4	Strip, Carpet
5	AAA488M5	Wick, Felt