

**Machine, Gearless DC**

**130HT**

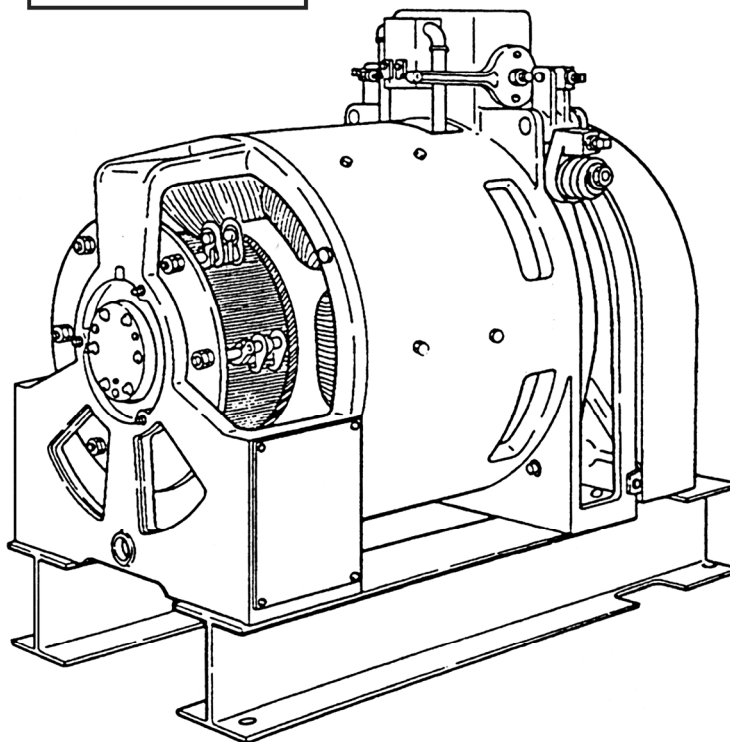
**(Yonkers, NY Manufacture)**

**Spare Parts Leaflet**

**06-B6847A**

**February 14, 2008 / Page 1 of 11**

**W/O  
VINTAGE**



**OTIS**

**SERVICE ENGINEERING**  
Otis Elevator Company  
Bloomfield, Connecticut USA

**06-B6847A**

# History

## Leaflet Description

The 130HT is a DC gearless machine. A standard 130HT is arranged for 2:1 roping and single-wrap traction (SWT). This leaflet describes the lowest replaceable parts for all versions of the Yonkers, New York manufactured 130HT machine.

**NOTE:** The 130HT machine was sourced from multiple Otis facilities. Some replacement parts are unique to a machine's manufacturing source. Use the contract's 2020 Forms if available, or the vintage tag and/or the data nameplate as an aid to identify the machine source, and then use the appropriate SPL listed under *Related Documents* below.

## Leaflet Revisions

Date Revised	Subject Matter Expert	Reason for Revision
December 11, 2003	Nicholas Grant	New SPL
February 14, 2008	Val Sheynkman	Updated Information

## Related Drawings

Drawing No.	Title	Drawing No.	Title
B6847A	Assembly, 130HT Machine	6913A	Assembly, Brake Switch

## Related Documents

Document ID	Title
SPL C-1008	Type 6931A Mechanical Switch
TIP 6.0-1	Replacement of Brake Linings
TIP 6.1.0-17	Reworking Bearing Journals
TIP 6.1.1-14	Installation Procedure for Sheave Guard (with Carpet Wiper)
TIP 6.1.0-19	Gearless Machine Commutator Guard Installation

## Subject Matter Expert

Name	Department
Val Sheynkman	OSC, Service Engineering

## About Spare Parts Leaflets...

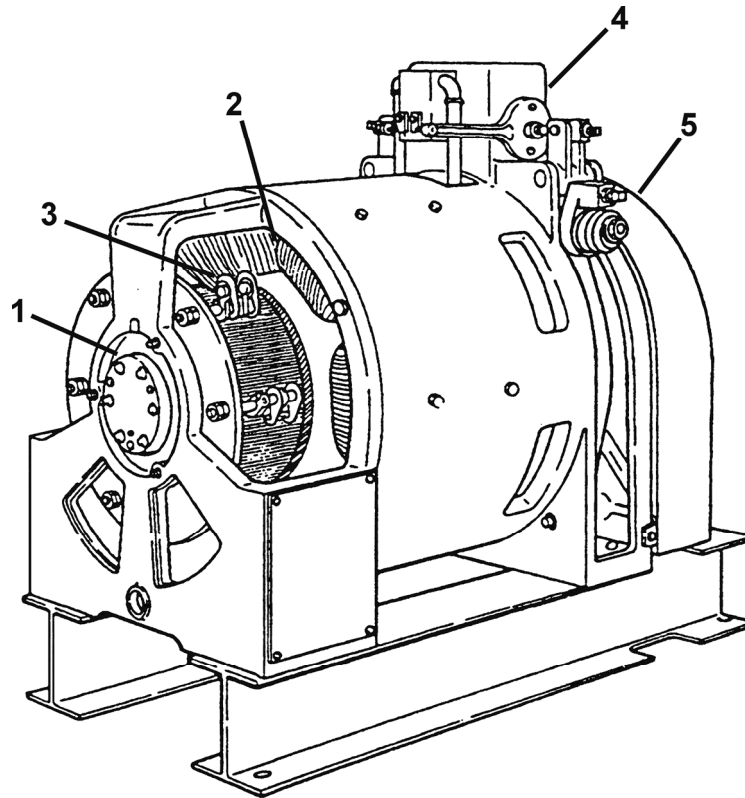
This document lists the lowest replaceable units (LRUs) for the standard version of the product. The LRUs are chosen by a team of Otis associates representing engineering and manufacturing.

While goal of this document is to make parts identification as easy as possible, the document cannot be all-inclusive. Elevator and escalator contracts classified as "special" or "custom" are not addressed here. For such contracts, please refer to specified information, the contract folder, TIPs, Field Education Articles, Construction Letters, etc. for further information.

If you have any suggestions about this document, please contact the subject matter expert listed on this page.

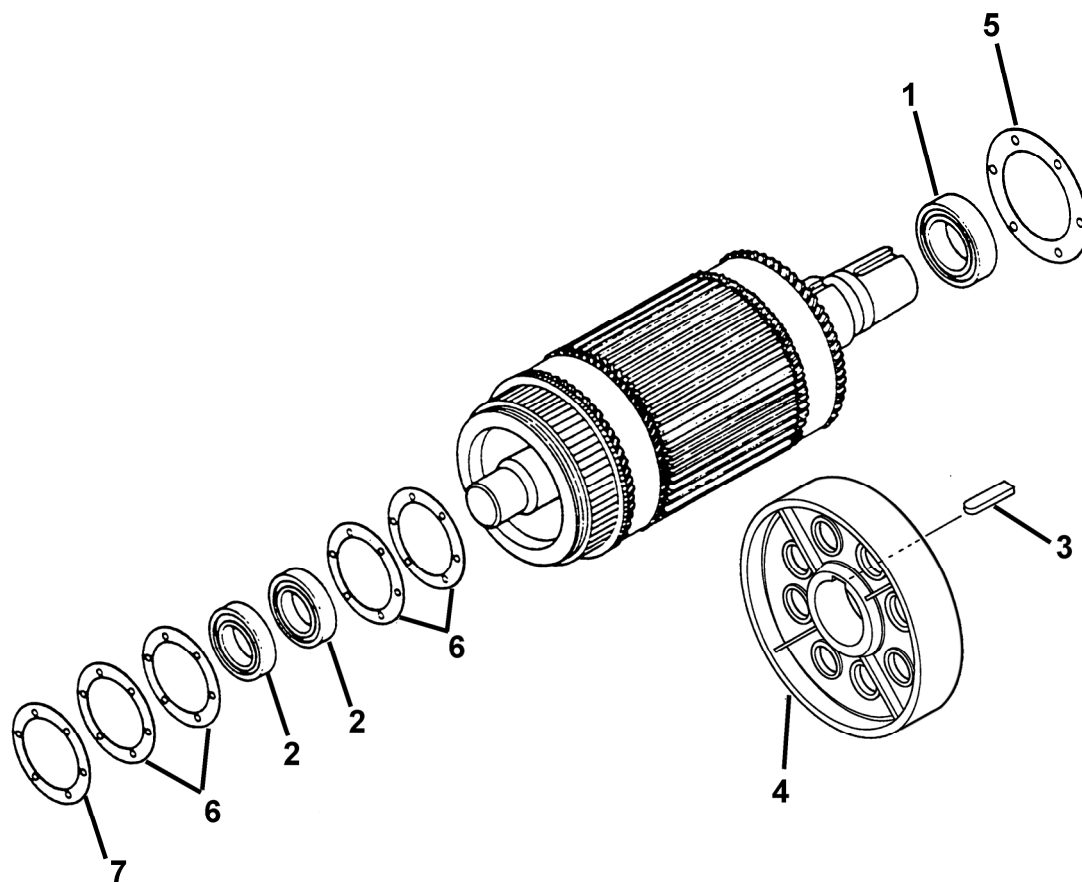
# Table of Contents

06-B6847A



REF. No.	PAGE No.	DESCRIPTION
1	4	Armature Shaft Assembly
2	5	Motor Field Coils & Pole Pieces
3	6	Brush Holders & Brushes
4	7-9	Brake Parts
5	10	Drive Sheave
---	11	Sheave and Commutator End Guards for 130HT Machine

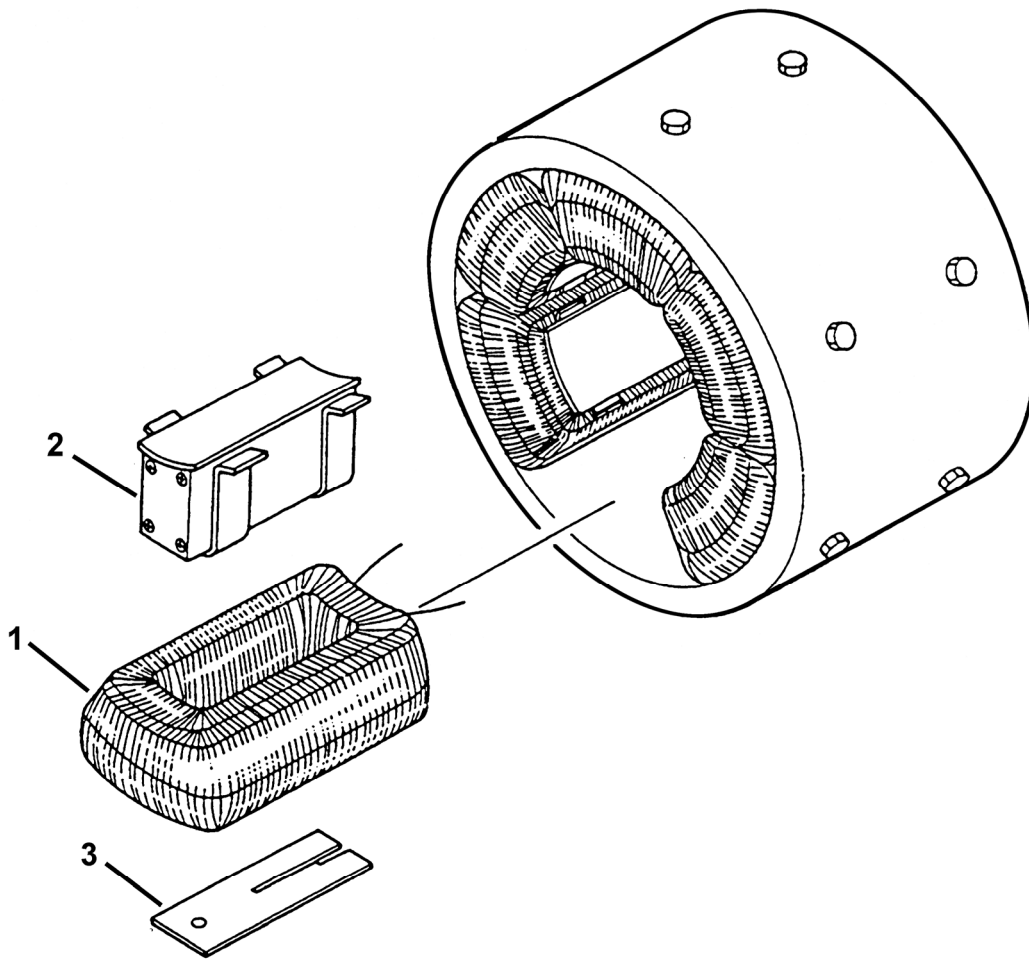
# Armature Assembly



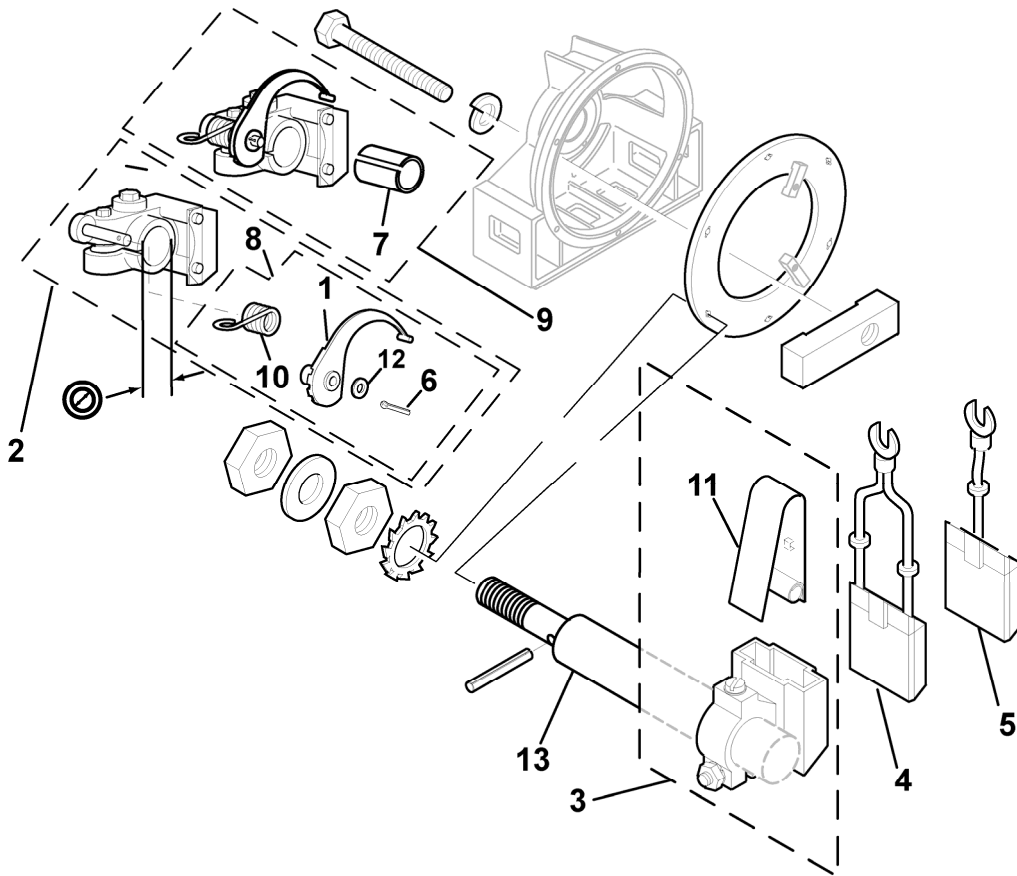
W/O VINTAGE		
REF. No.	PART No.	DESCRIPTION
1	209P1	Bearing, Roller, 10.6 in. $\varnothing$
2	209B21	Bearing, Roller, 4.9 in. $\varnothing$
3	192G107	Key
4	198T1	Pulley, Brake
5	255CG1	Shim, Plastic, Green, 13.0 in. $\varnothing$ , 0.003 in. Thick
6	255BM4 255BM3	Shim, Plastic, Green, 6-15/16 in. $\varnothing$ , 0.003 in. Thick
	255BM2 255BM4	Shim, Plastic, Blue, 6-15/16 in. $\varnothing$ , 0.005 in. Thick
7	376GE4 AAA376FT1	Gasket, 7.25 in. $\varnothing$ , 0.059 in. Thick

# Field Coils

**06-B6847A**



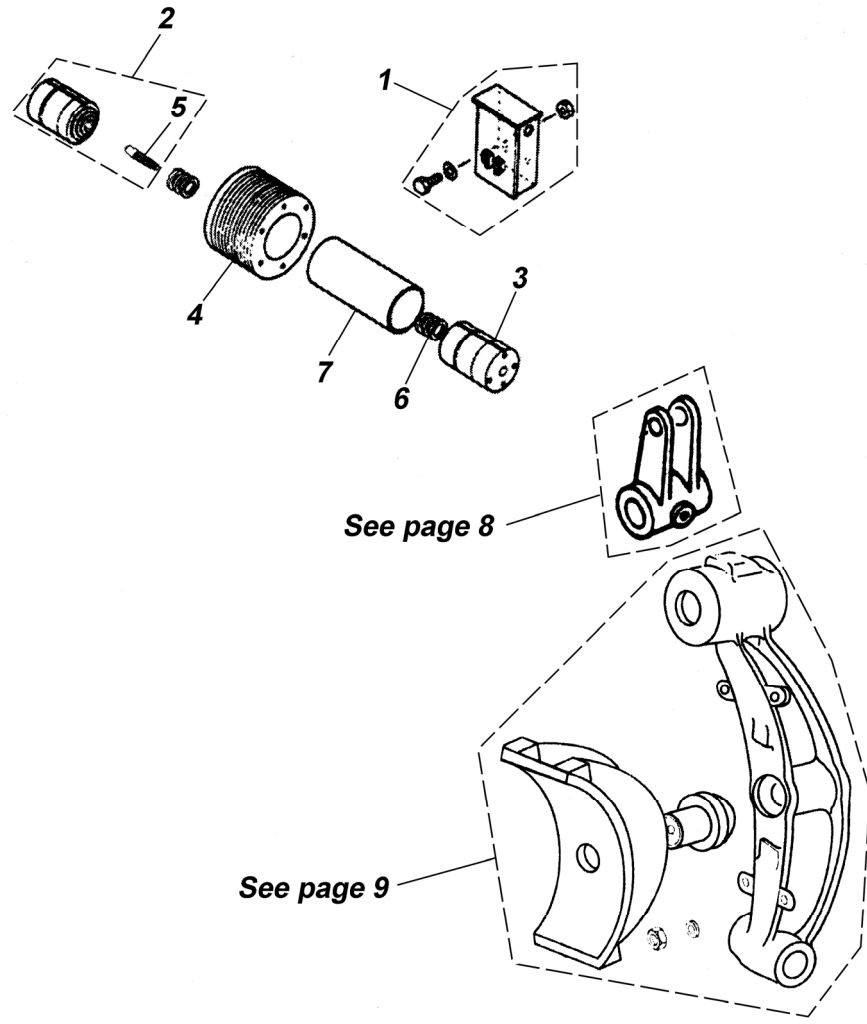
<b>W/O VINTAGE</b>		
<b>REF. No.</b>	<b>PART No.</b>	<b>DESCRIPTION</b>
1	221AL2	Coil, Field (set of 6)
2	355AA1	Pole Piece
3	255BL4	Shim



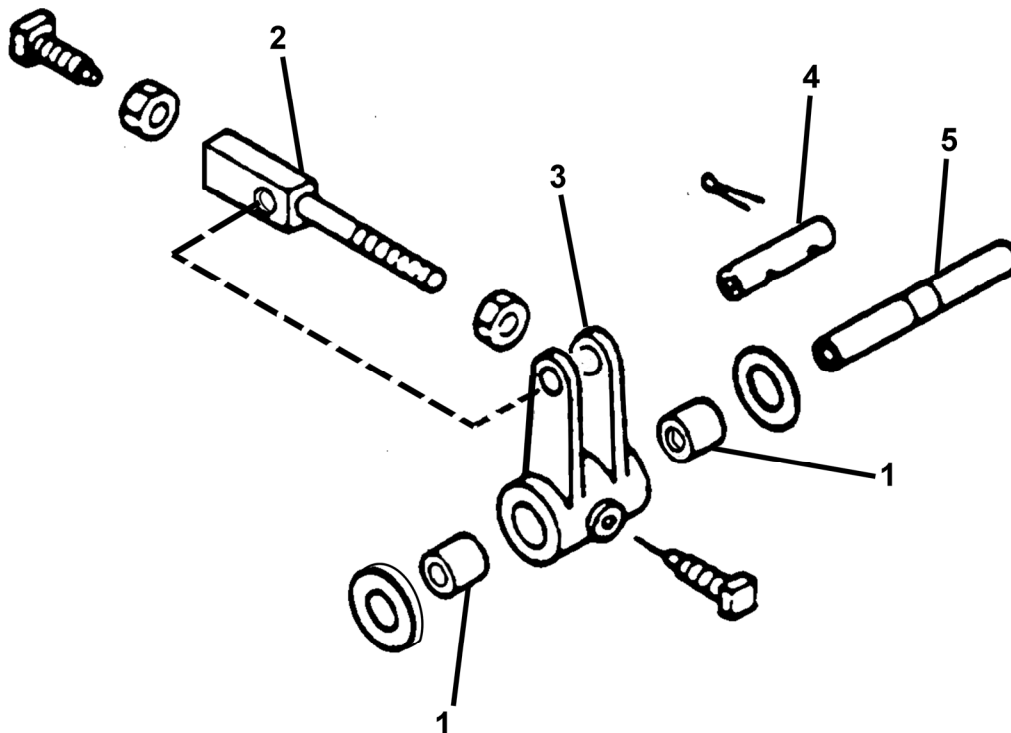
W/O VINTAGE		
REF. No.	PART No.	DESCRIPTION
1	288CD4	Arm
2	6134B5	Brush Holder Assembly, (⊗) 0.875 in.
	6134B6	Brush Holder Assembly, (⊗) 0.902 in.
3	1-6134J4	Brush Holder Assembly, (⊗) 0.902 in.
	6134J4	
4	240P7	Brush, Shunt-Double
5	240P3	Brush, Shunt-Single
6	---	Cotter Pin, 1/16 x 1/2 in.
7	298DF129	Insulating Strip
8	LO5000E705	Kit, Arm + Spring + Washer + Cotter Pin
9	LO2000FA318	Kit, Brush Holder (⊗) 0.902 in. + Insulation Strip
10	92A4	Spring
11	93FC2	Spring
12	128AF12	Washer
13	474H2	Stem, Brush


# Brake Assembly-Brake Core Parts

**06-B6847A**



	<b>W/O VINTAGE</b>	
<b>REF. No.</b>	<b>PART No.</b>	<b>DESCRIPTION</b>
1	6098AL1	Assembly, Brake Switch
2	400DJ4	Assembly, Magnet Core, Female with Pin
3	400DH4	Assembly, Magnet Core, Male
4	222J15	Coil, Magnet
5	81BM1	Pin (brake core)
6*	128AG52	Washer
7	136R3	Tube (brake cores)

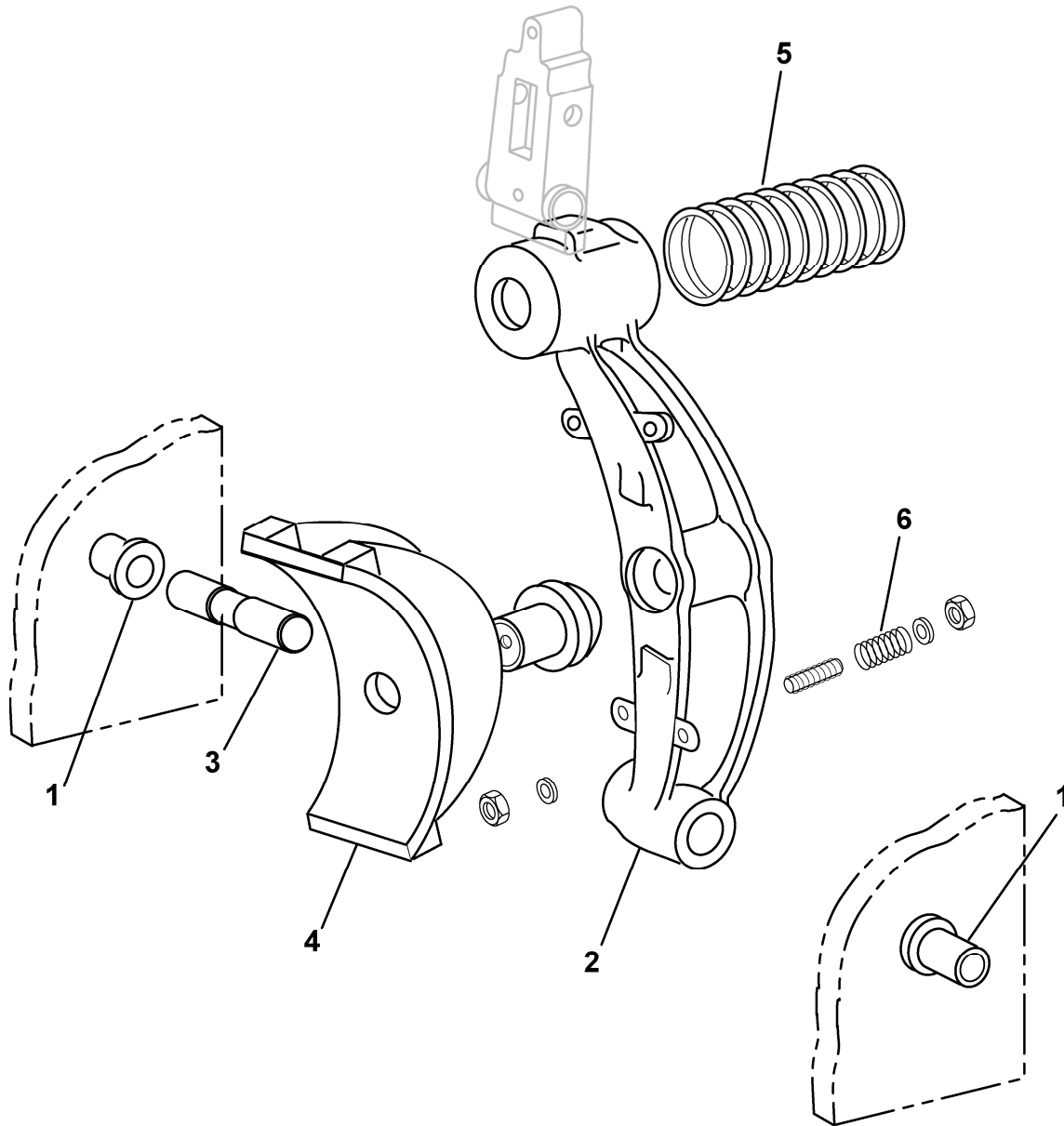


W/O VINTAGE		
REF. No.	PART No.	DESCRIPTION
	---	Assembly, Brake Lever,  page 9
1	335H14 335H43	Bushing
2	65GA3	Bolt
3	B288GG1	Lever
4	82R3	Pin
5	77LG1 77LG3	Pin



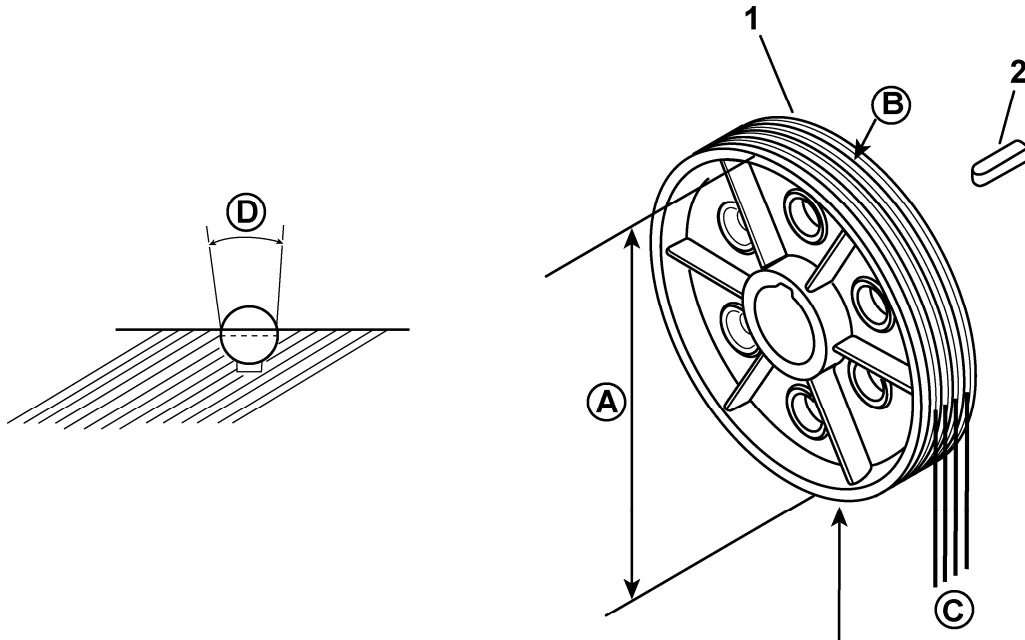
# Brake Levers

06-B6847A



W/O VINTAGE		
REF. No.	PART No.	DESCRIPTION
1	335H44 335H43	Bushing (to brake frame)
2	286R1	Lever, Brake
3	77LG3	Pin (to brake frame)
4	415G2	Shoe, Brake, with Lining (see TIP 6.0-1)
5	90JD11	Spring
6	90LB5	Spring, ⌀ 9/16 in.

# Sheave Assembly



**NOTE:** If part number is not shown, supply the following information:

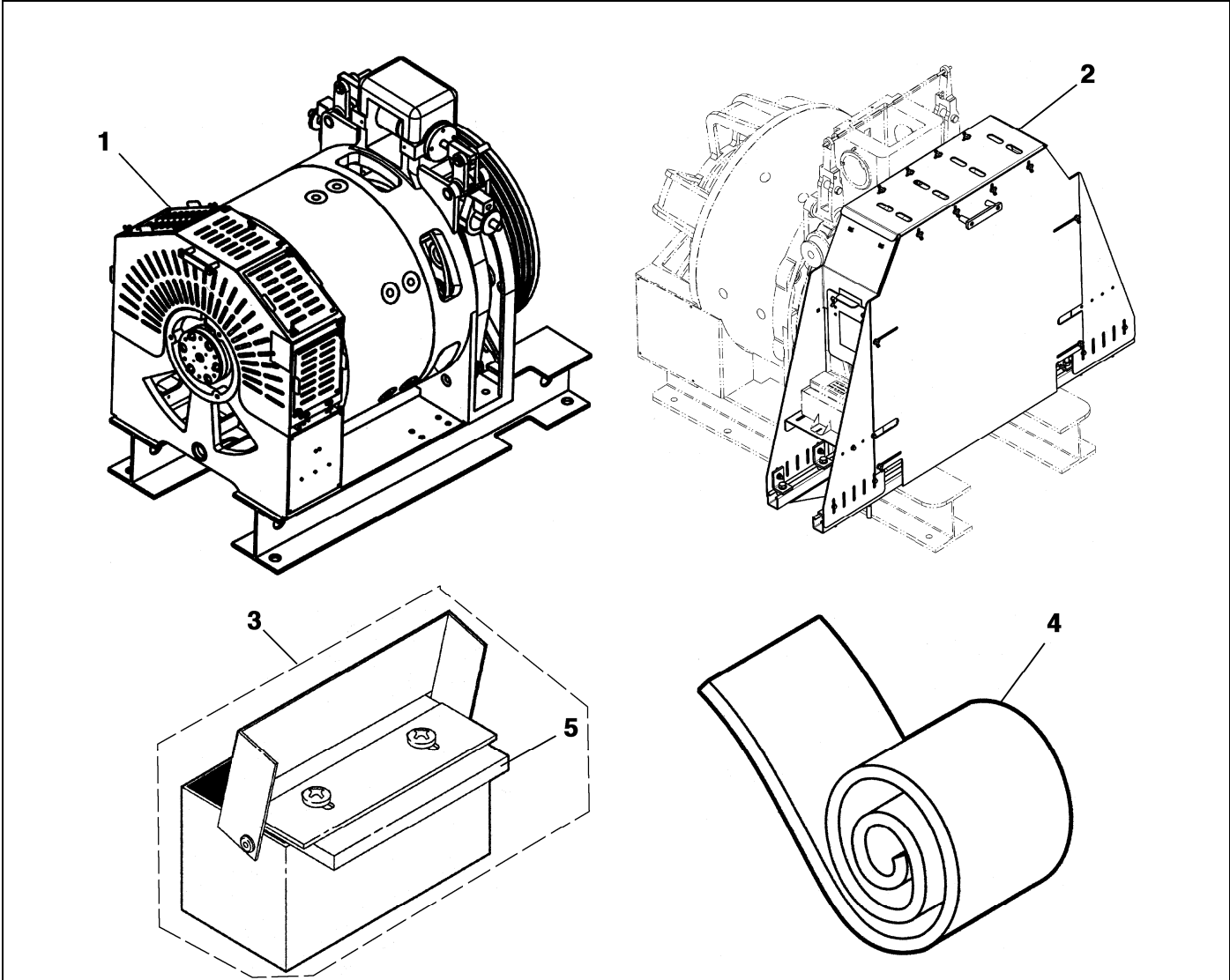
- A. Diameter of sheave
- B. Number of grooves
- C. Rope diameter
- D. Undercut groove

**Stamped Part Number**



W/O VINTAGE					
REF. No.	PART No.	DESCRIPTION			
			No. of Ropes	Rope (in.)	Undercut Groove (degrees)
1	260AJ1	Sheave, Drive	6	0.5	105
	260AJ2		5		
	260AJ3		6		90
	260AJ4		5		
2	192D37	Key			
3	251BT3 B251BT3	Insert, Polyurethane			

# Sheave and Commutator End Guards for 130HT Machine

**06-B6847A**



**W/O VINTAGE**

REF. No.	PART No.	DESCRIPTION
1	---	Guard, Commutator End,  TIP 6.1.0-19
2	---	Guard, Sheave,  TIP 6.1.1-14
3	AAA508AH3	Lubricator
4	AAA297AY4	Strip, Carpet
5	AAA488M5	Wick, Felt