

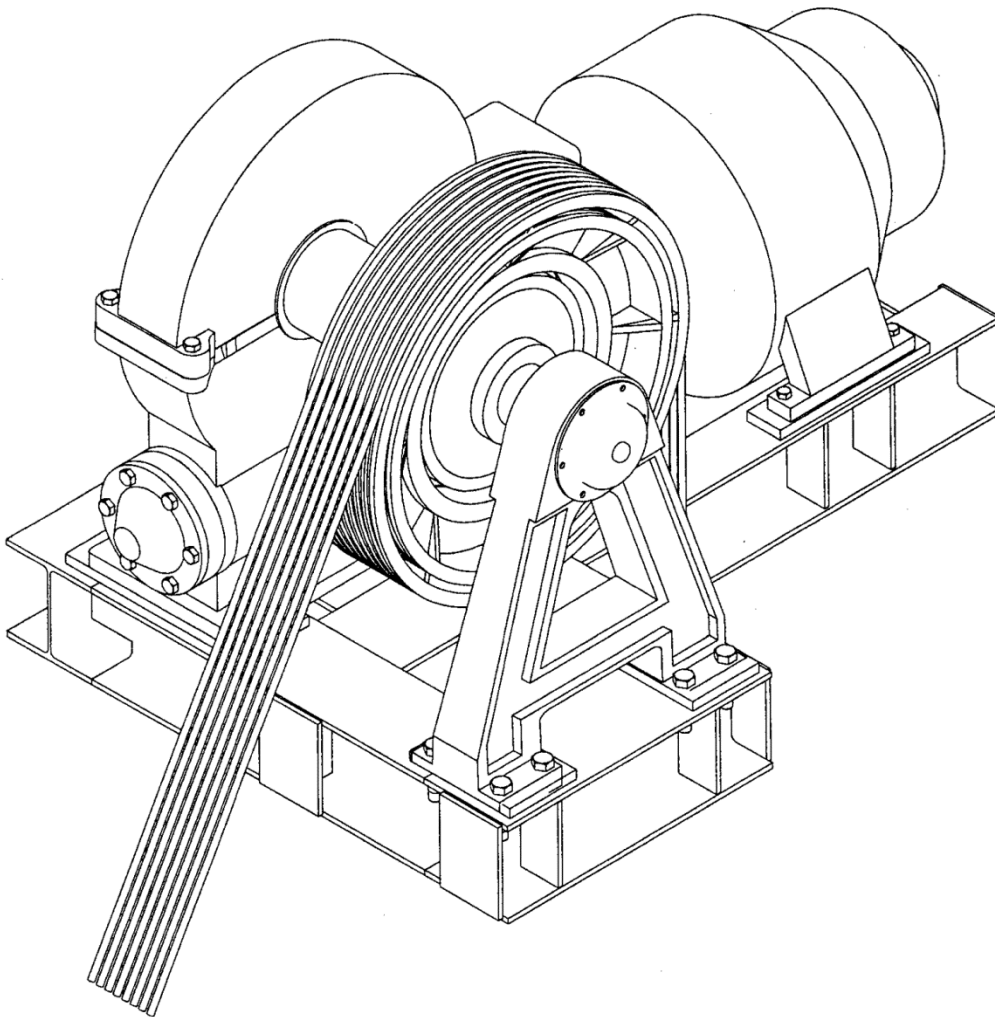
# 38BT Machine

**Spare Parts Leaflet**

**06-B6853A**

**August 26, 2020 / Page 1 of 21**

**W/O  
VINTAGE**



# OTIS

This document does not contain any technical data subject to EAR or ITAR

**SERVICE ENGINEERING**  
**Otis Elevator Company**  
**Bloomfield, Connecticut USA**

Unpublished Work—© Otis Elevator Co.; 2020

**Leaflet Description**

The 38BT machine was derived from the older Otis #4 machine. The earlier #4 machines used babbitt sleeve-type sheave shaft bearings. For the 38BT, the design was changed to utilize Timken style tapered roller bearings. This SPL is intended to provide spare parts information for the later machines with the tapered roller type sheave shaft bearings produced after 1948, whether referred to as a #4 SWT or a 38BT.

**Leaflet Revisions**

<b>Date Revised</b>	<b>Subject Matter Expert</b>	<b>Reason for Revision</b>
February 13, 2013	Tom Charney	New SPL
February 15, 2017	Tom Charney	Corrected part number in Ref. 11 on p. 9
August 26, 2020	Tom Charney	Updated part number information in Ref. 7 on p. 10

**Related Drawings**

<b>Drawing No.</b>	<b>Title</b>	<b>Drawing No.</b>	<b>Title</b>
---	---	---	---

**Related Documents**

<b>Document ID</b>	<b>Title</b>
---	---

**Subject Matter Expert**

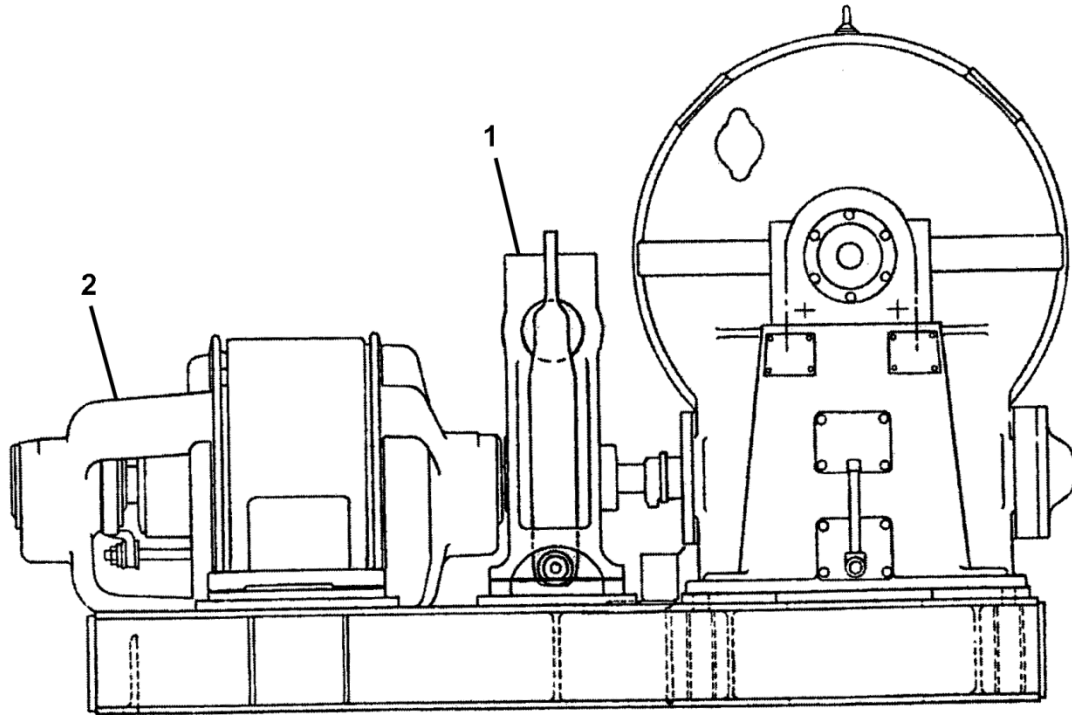
<b>Name</b>	<b>Department</b>
Tom Charney	OSC Service Engineering




**About Spare Parts Leaflets...**

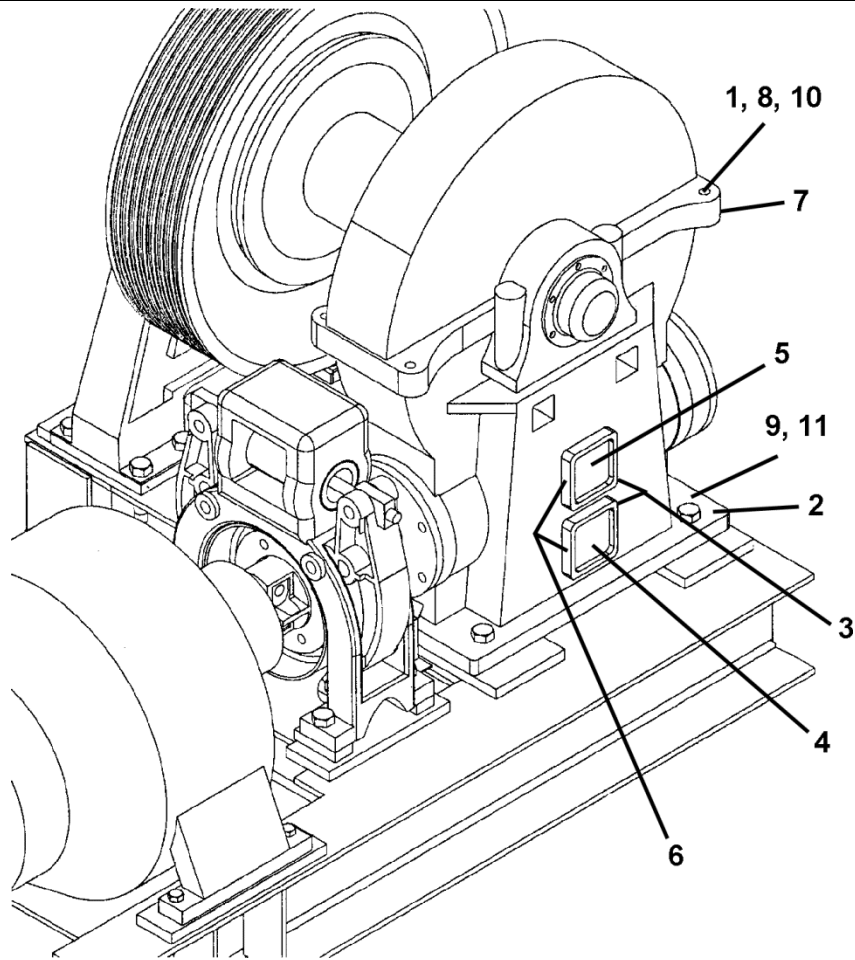
This document lists the lowest replaceable units (LRUs) for the standard version of the product. The LRUs are chosen by a team of Otis associates representing engineering and manufacturing.

While goal of this document is to make parts identification as easy as possible, the document cannot be all-inclusive. Elevator and escalator contracts classified as “special” or “custom” are not addressed here. For such contracts, please refer to specified information, the contract folder, TIPs, Field Education Articles, Construction Letters, etc. for further information.

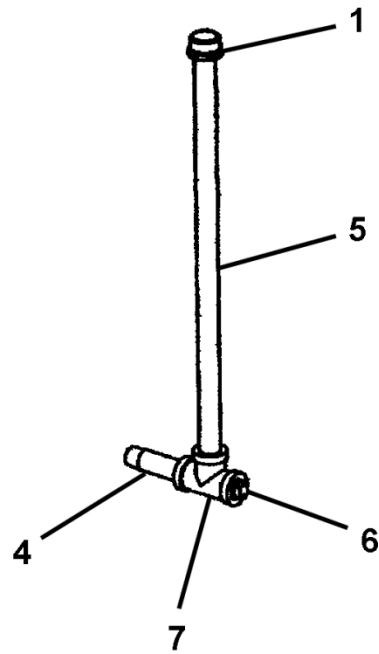
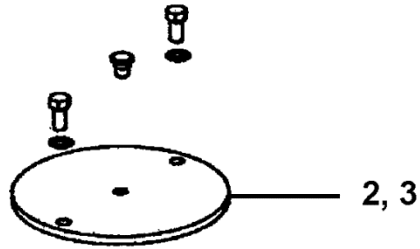
If you have any suggestions about this document, please contact the subject matter expert listed on this page.



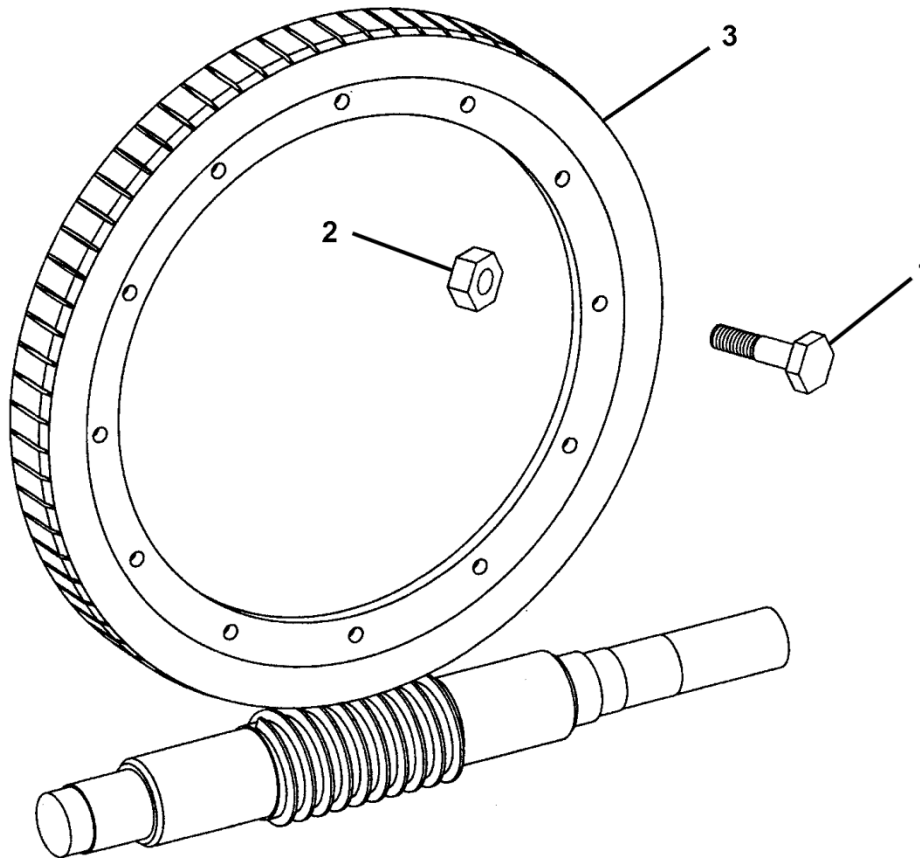
W/O VINTAGE		
REF. No.	PART No.	DESCRIPTION
1	---	Brake, Type 11-D,  SPL C-960E
2	---	Motor, Type 98G,  SPL C-1001A
	---	Motor, Type 112G,  SPL C-1002B



<b>W/O VINTAGE</b>		
<b>REF. No.</b>	<b>PART No.</b>	<b>DESCRIPTION</b>
1	58XA40	Bolt, 3/4 x 4-1/2 in.
2	58XA68	Bolt, 1-1/8 x 3-1/2 in.
3	BTFH 1/2X1	Bolt, 1/2 x 1 in.
4	346JZ2 A346JZ1	Cover, Clean Out Hole
5	346JY4 A346JY1	Cover, Hand Hole
6	376BC1	Gasket, Hole Cover
7	376CC1	Gasket, Gearcase (2 required)
8	NUT FH3/4-10	Nut, 3/4 in. - 10
9	NUT FH5/8	Nut, 5/8 in.
10	NUT FHJ3/4-10	Nut, Jam, 3/4 in. - 10
11	80C1	Pin, Taper



W/O VINTAGE		
REF. No.	PART No.	DESCRIPTION
1	377DE3	Cap, Pipe, M.I., 1/2 in.
2	AAA20141C4	Kit, Clear Cover, 2-Bolt
3	AAA20141C5	Kit, Clear Cover, 1-Bolt
4	441DK3	Nipple, Pipe Std. Close, 1/2 in.
5	377KA7 377KA2	Pipe, Std.
6	377DF3	Plug, Pipe, C.I., 1/2 in.
7	377EG3	Tee, Pipe, C.I., 1/2 in.

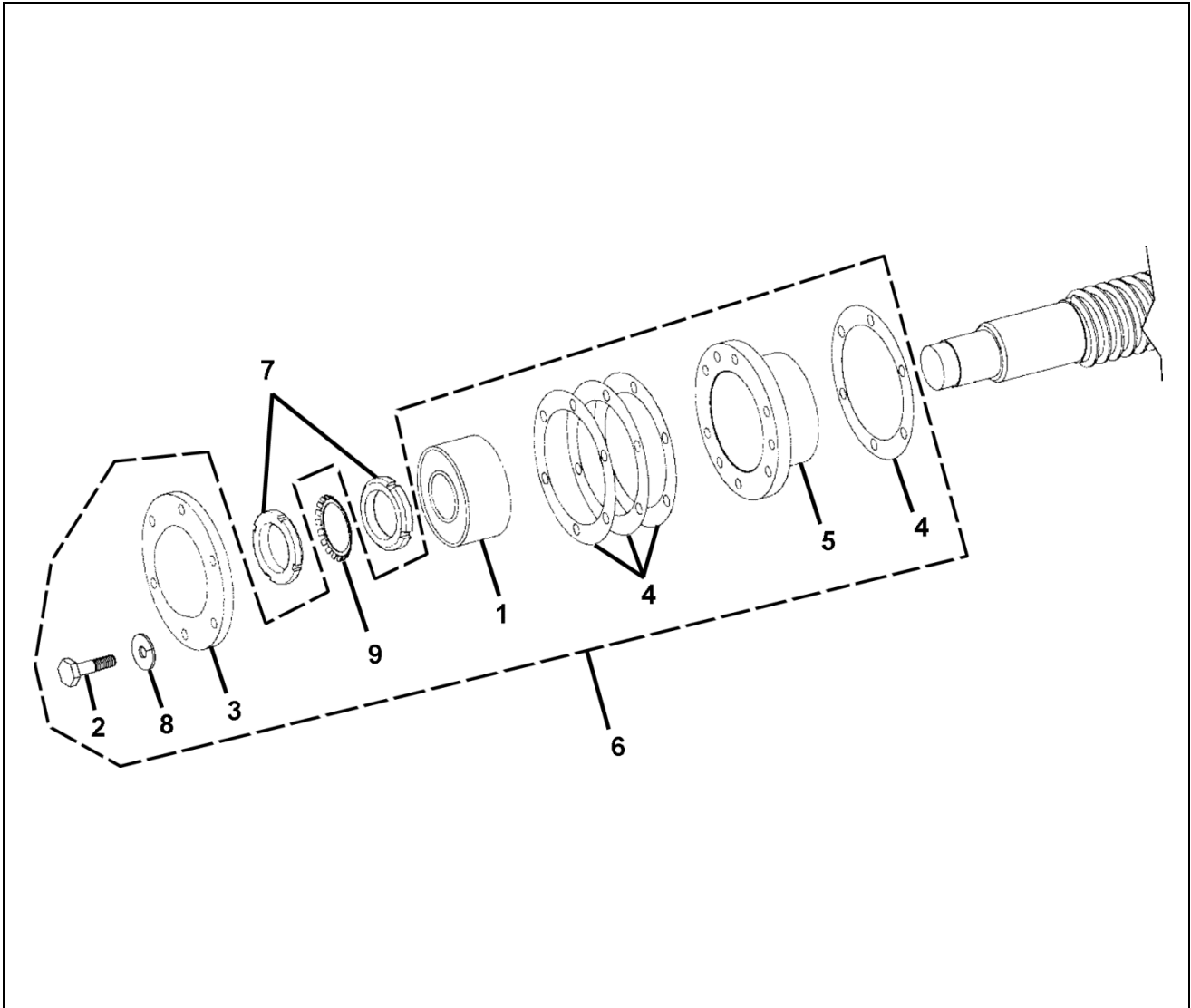


REF. No.	GEAR RATIO	W/O VINTAGE (A6853W)	W/O VINTAGE (6853W & 6853B) SEE NOTE	Description
		Part No.	Part No.	
1	---	84D7		Bolt, Body Fit, Oversized
2	---	67H8		Nut, Elastic Stop
3	16-1/5:1	490GK3/ 200BC1	GS1-490GK3/ 200BC1	Worm and Gear Sets
	20-1/4:1	490GK15/ 200BC2	GS1-490GK15/ 200BC2	
	28-1/3:1	490GK5/ 200BC3	GS1-490GK5/ 200BC3	
	38-1/2:1	490GK13/ 200BC4	GS1-490GK13/ 200BC4	
	50-1/2:1	490GK9/ 200BC5	GS1-490GK9/ 200BC5	
	60:1	---	GS1-490GK17/805562	

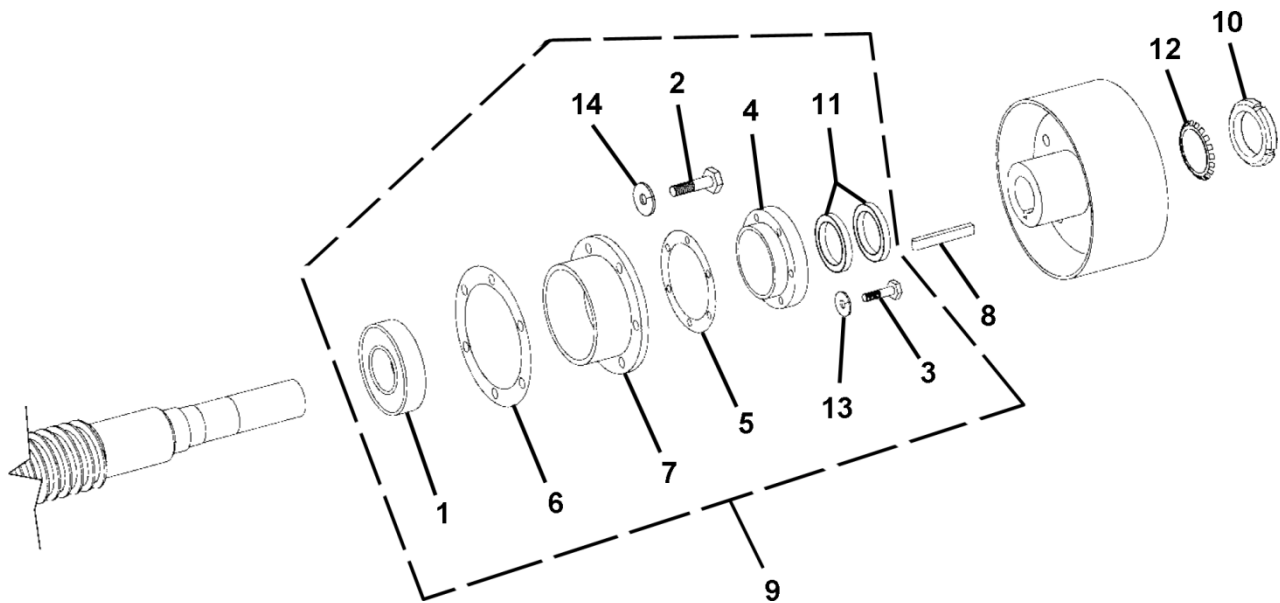
**NOTE:** Part numbers in this column are used when upgrading earlier, sleeve bearing type machines to the later roller bearing arrangement and the existing, straight bore brake coupling is retained.

# 38BT Thrust Bearing

**06-B6853A**



<b>W/O VINTAGE (A6853W)</b>		
<b>REF. No.</b>	<b>PART No.</b>	<b>DESCRIPTION</b>
1	207AR11	Bearing, Thrust
2	VP-711325	Bolt, Thrust Cover, 3/4 in. x 3 in.
3	346AEW1	Cover, Thrust
4	255HB40	Gasket & Shim
5	396FF1	Housing, Thrust
6	186208	Kit, Thrust Bearing & Housing, Complete
7	72BV6	Nut, Thrust
8	130F31	Washer, Spring Lock, 3/4 in.
9	130AA6	Washer, Thrust Side

**06-B6853A****38BT Inside Bearing****W/O VINTAGE  
(A6853W)**

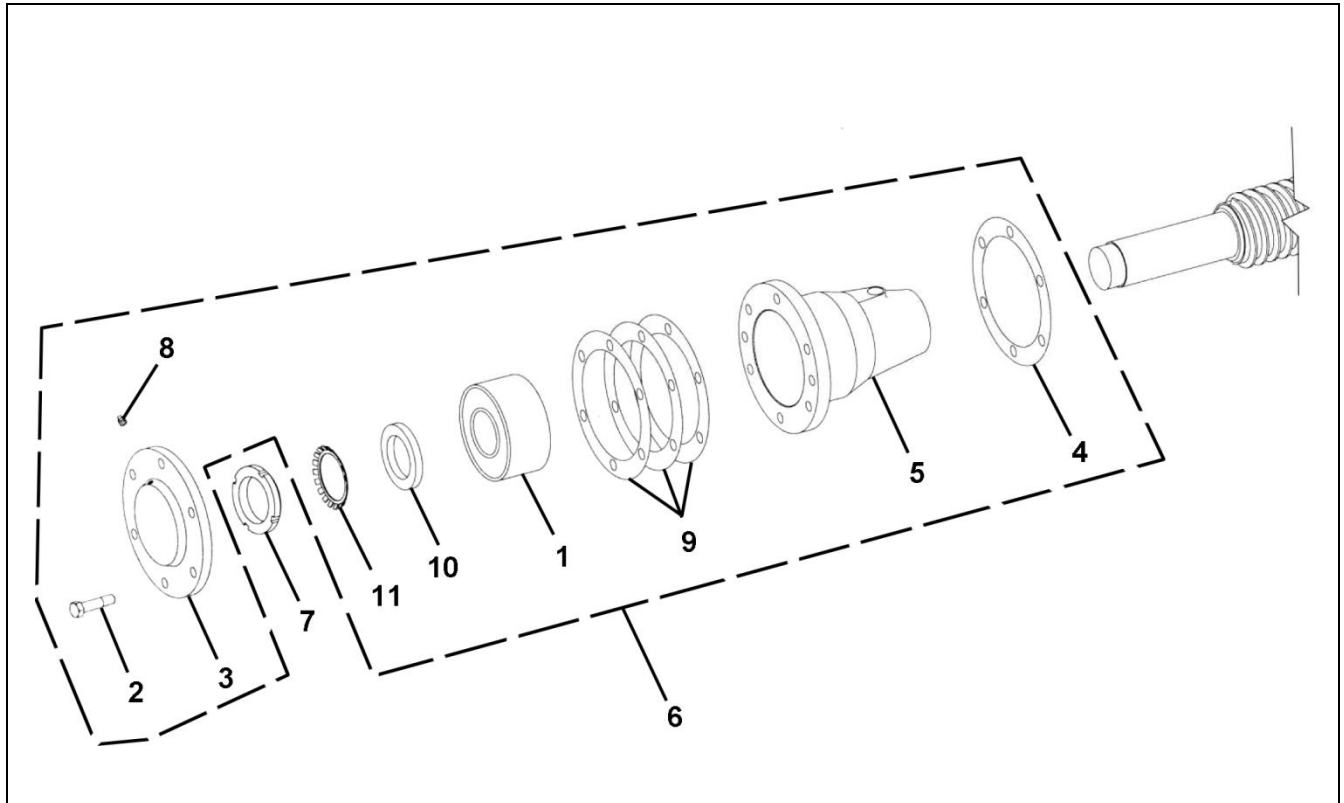
<b>REF. No.</b>	<b>PART No.</b>	<b>DESCRIPTION</b>
1	207Z50	Bearing, Inside
2	BTFH 3/4X1-3/4	Bolt, 3/4 x 1-3/4 in.
3	BTFH 1/4X1	Bolt, 1/4 x 1 in.
4	346AEY1	Cover, Inside, 1/2 in. Thick Flange, <b>See NOTE.</b>
5	255HB43	Gasket
6	255HB40	Gasket
7	396FG1	Housing, Inside
8	192G59	Key, 2 Round Ends
9	186209	Kit, Inside Bearing and Housing, Complete
10	72BV2	Nut, Inside
11	33D25	Seal, Oil (Solid) – Order Qty. 2
	33D26	Seal, Oil (Split) – Order Qty. 2
12	130AA2	Washer, Inside
13	WSR LK 1/4	Washer, Spring Lock, 1/4 in.
14	130F31	Washer, Spring Lock, 3/4 in.

**NOTE:** Early machines have a 1/4 in. thick flange on this part. When changing the worm shaft, it is recommended to replace the early thin housing with the current thick housing for improved seal retention.



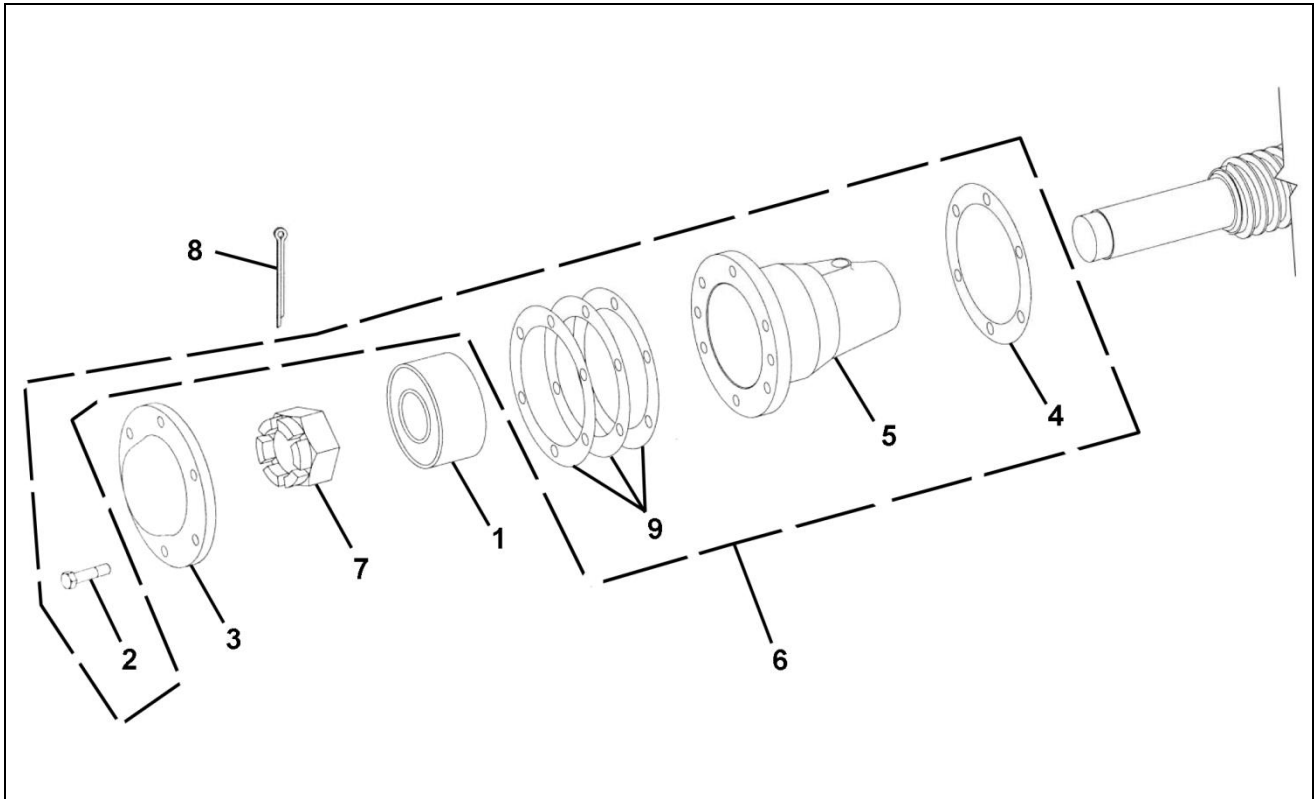
# 38BT Thrust Side Worm Shaft Parts

06-B6853A



W/O VINTAGE (6853W)		
REF. No.	PART No.	DESCRIPTION
1	207AR6 A6800AN3	Bearing, Thrust, w/ Anti-Rotation Tab, See <b>NOTE</b>
2	58XA38	Bolt, 3/4 x 3-3/4 in.
3	<del>346AAC1</del> A346AAC1	Cover, Thrust, Notched
4	376T9	Gasket
5	396DS1	Housing, Thrust
6	186187A	Kit, Thrust Bearing and Housing Complete, see <b>NOTE</b>
7	72BV11	Nut, Bearing
8	377DF1	Plug, Pipe, 1/4 in.
*	33D13	Seal, Oil, <b>Eliminated</b>
9	376T10	Shim, 0.003 in. Thick, Green
	376T11	Shim, 0.0075 in. Thick, Transparent
10	462W49	Spacer
*	93AR1	Spring, Anti-Rotation, <b>Eliminated</b>
11	130AA11	Washer, Tabbed

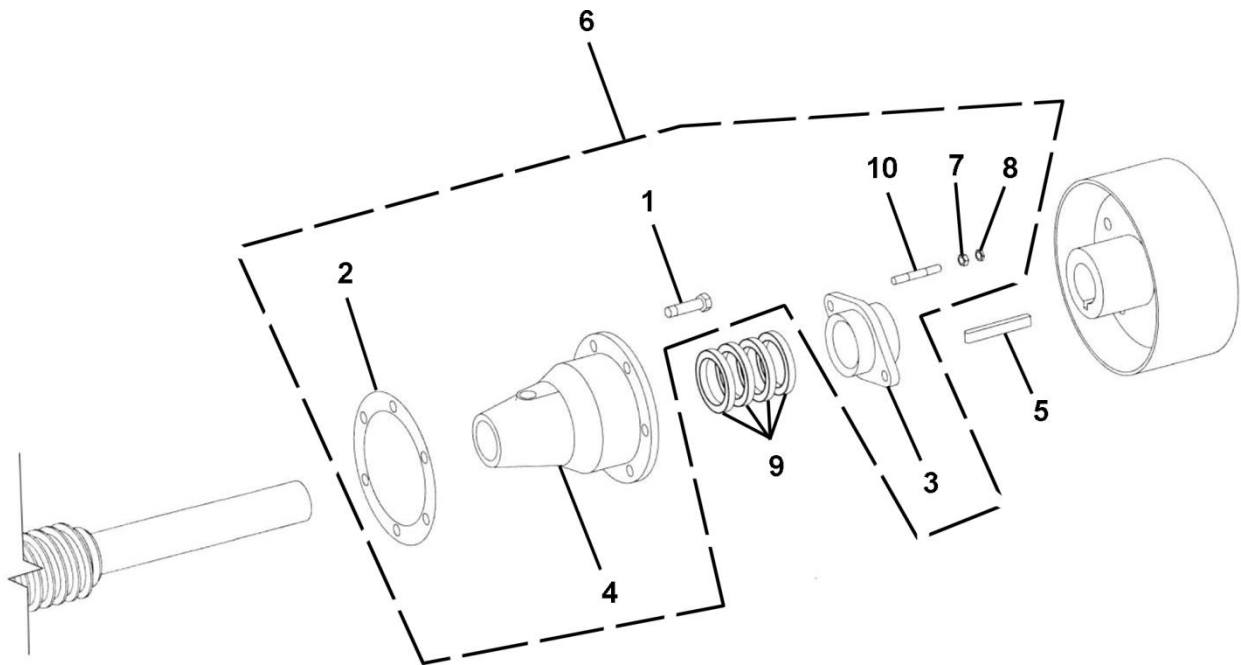
**NOTE:** Material on this page is only used when the existing worm shaft is retained. When replacing the worm and gear set, use material per page 7.



**W/O VINTAGE  
(6853B)**

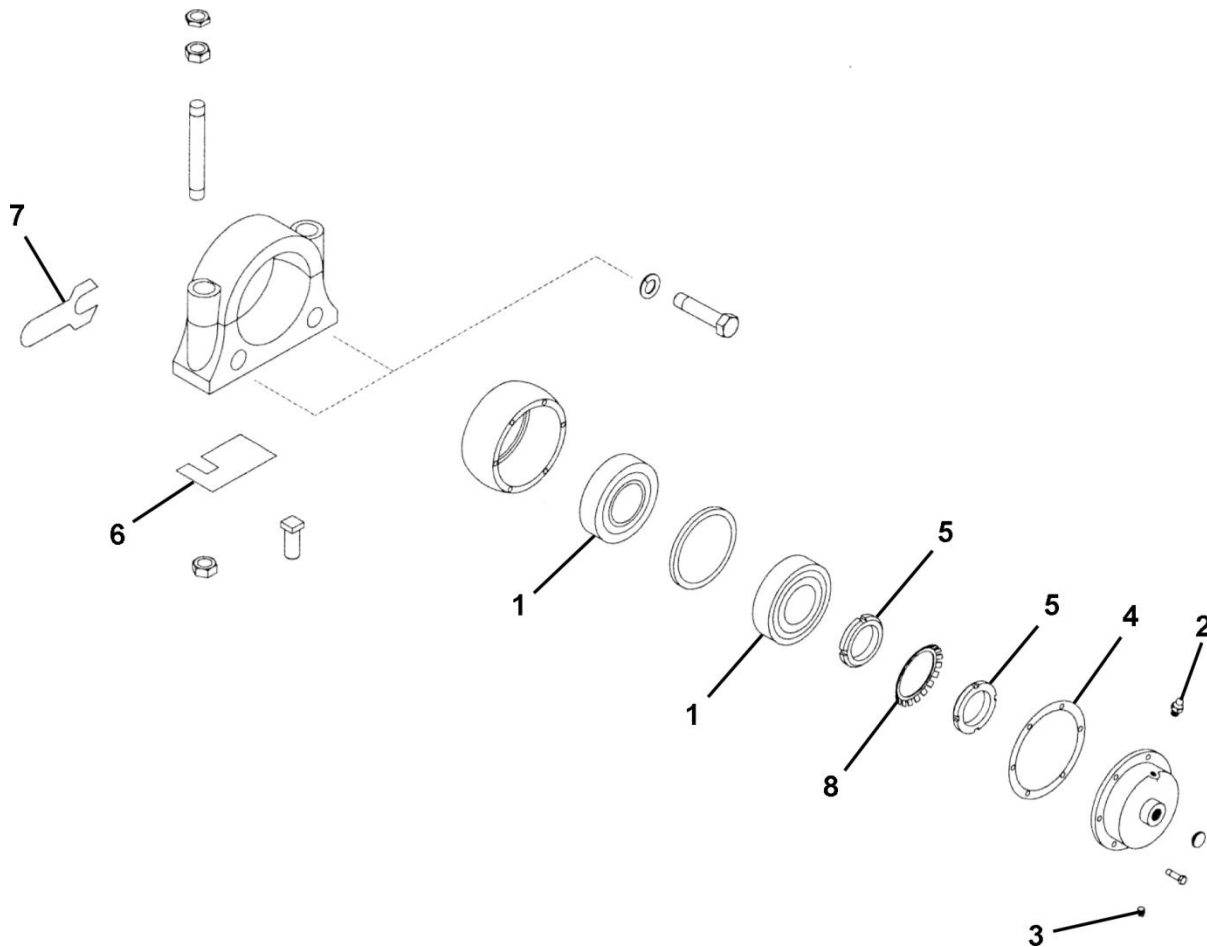
REF. No.	PART No.	DESCRIPTION
1	207AR4 6800DP10	Bearing, Thrust, w/ Anti-Rotation Tab, see <b>NOTE</b>
2	58XA39	Bolt, Thrust Cover
3	346NL4 6800DR9	Cover, Thrust, Notched
4	376T9	Gasket
5	396CG1	Housing, Thrust
6	186082	Kit, Housing Replacement, see <b>NOTE</b>
7	72AM2 CAA72A2	Nut, Bearing
8	-	Pin, Cotter, 1/4 x 2-1/2 in.
9	376T10	Shim, 0.003 in. Thick, Green
	376T11	Shim, 0.0075 in. Thick, Transparent
*	93AR4	Spring, Anti-Rotation, <b>Eliminated</b>

**NOTE:** Material on this page is only used when the existing worm shaft is retained. When replacing the worm and gear set, use material per page 7.



<b>W/O VINTAGE (6853W + 6853B)</b>		
<b>REF. No.</b>	<b>PART No.</b>	<b>DESCRIPTION</b>
1	58XA31	Bolt, Inside Housing, 3/4 x 2 in.
2	376T9	Gasket
3	381G1	Gland
4	396CE1	Housing, Inside, see <b>NOTE</b>
5	192D36	Key, 1 Round End, 3/4 in. Square x 3-3/4 in. Long
	192D35	Key, 1 Round End, 5/8 in. Square x 8 in. Long
6	165908A	Kit, Inside Housing, see <b>NOTE</b>
7	NUT FH1/2CP	Nut, 1/2 in. - 13
8	NUT FHJ1/2CP	Nut, Jam, 1/2 in. - 13
9	182A6	Packing
10	96H96	Rod, Gland

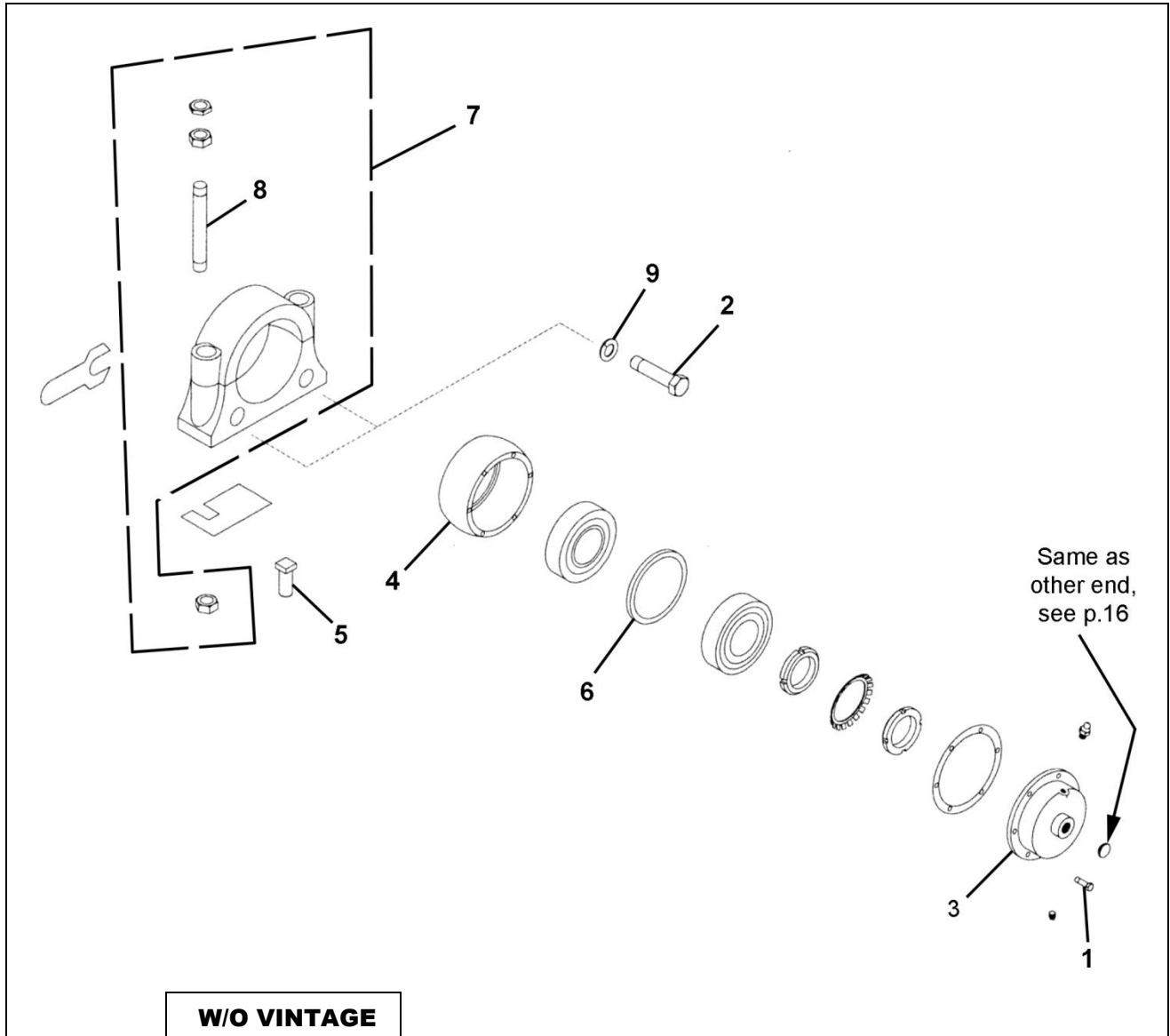
**NOTE:** Material on this page is only used when the existing worm shaft is retained. When replacing the worm and gear set, use material per page 8.



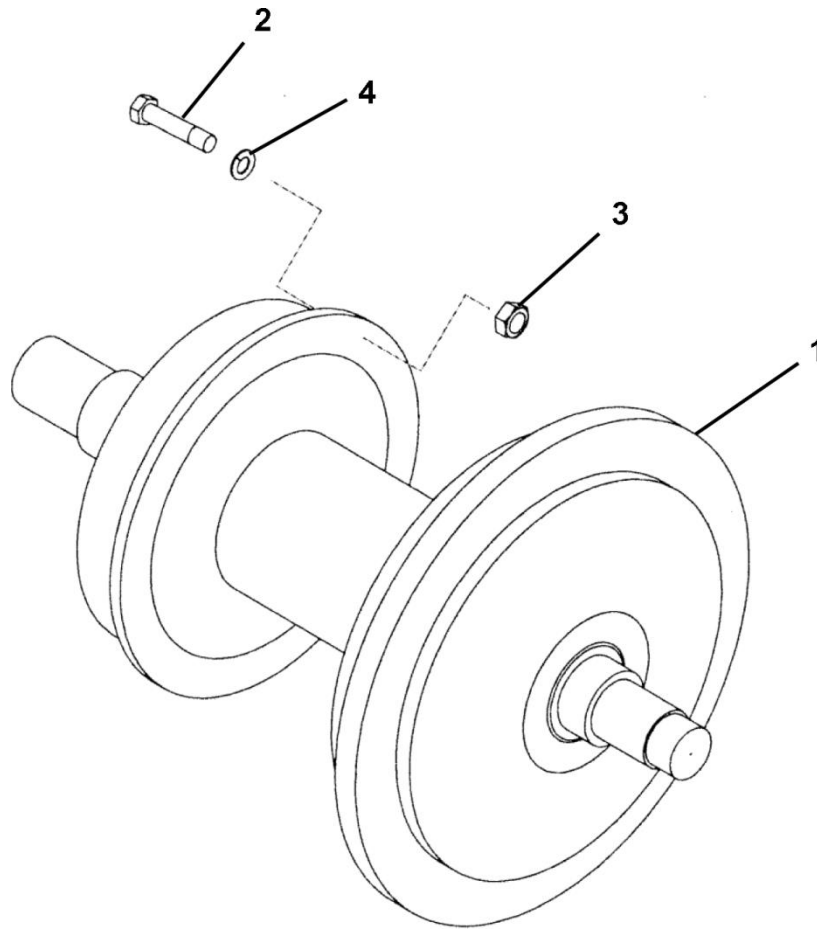
<b>W/O VINTAGE</b>		
<b>REF. No.</b>	<b>PART No.</b>	<b>DESCRIPTION</b>
1	209B12	Bearing (2 Required)
2	435C1	Fitting, Lubricator
3	435R1	Fitting, Vent
4	376T3	Gasket, Gear Side Cover
5	72BV6	Nut, Gear Side Shaft
6	255AE1	Shim, Bearing Stand, 0.0063 in. Thick, Vertical Support
	255AE2	Shim, Bearing Stand, 0.0086 in. Thick, Vertical Support
7	255YB1	Shim, Bearing Stand, 0.006 in. Thick, Lateral Support
	255YB2	Shim, Bearing Stand, 0.0082 in. Thick, Lateral Support
8	130AA6	Washer, Tabbed

# 38BT Gear Side Sheave Shaft Parts

06-B6853A



W/O VINTAGE		
REF. No.	PART No.	DESCRIPTION
1	BTFH 1/2X1-1/4	Bolt, 1/2 x 1-1/4 in.
2	BTFH 3/4X5-1/4	Bolt, 3/4 x 5-1/4 in.
3	346NJ1	Cover, Bearing
4	<del>396AD4</del> A396AD2	Housing, Bearing
5	77ZA1	Pin, Centering, Bearing Stand
6	462AD1	Spacer, Bearing
7	472AB2	Stand, Bearing
8	96P21	Stud, 1-1/8 in.
9	130F31	Washer, Spring Lock, 3/4 in.

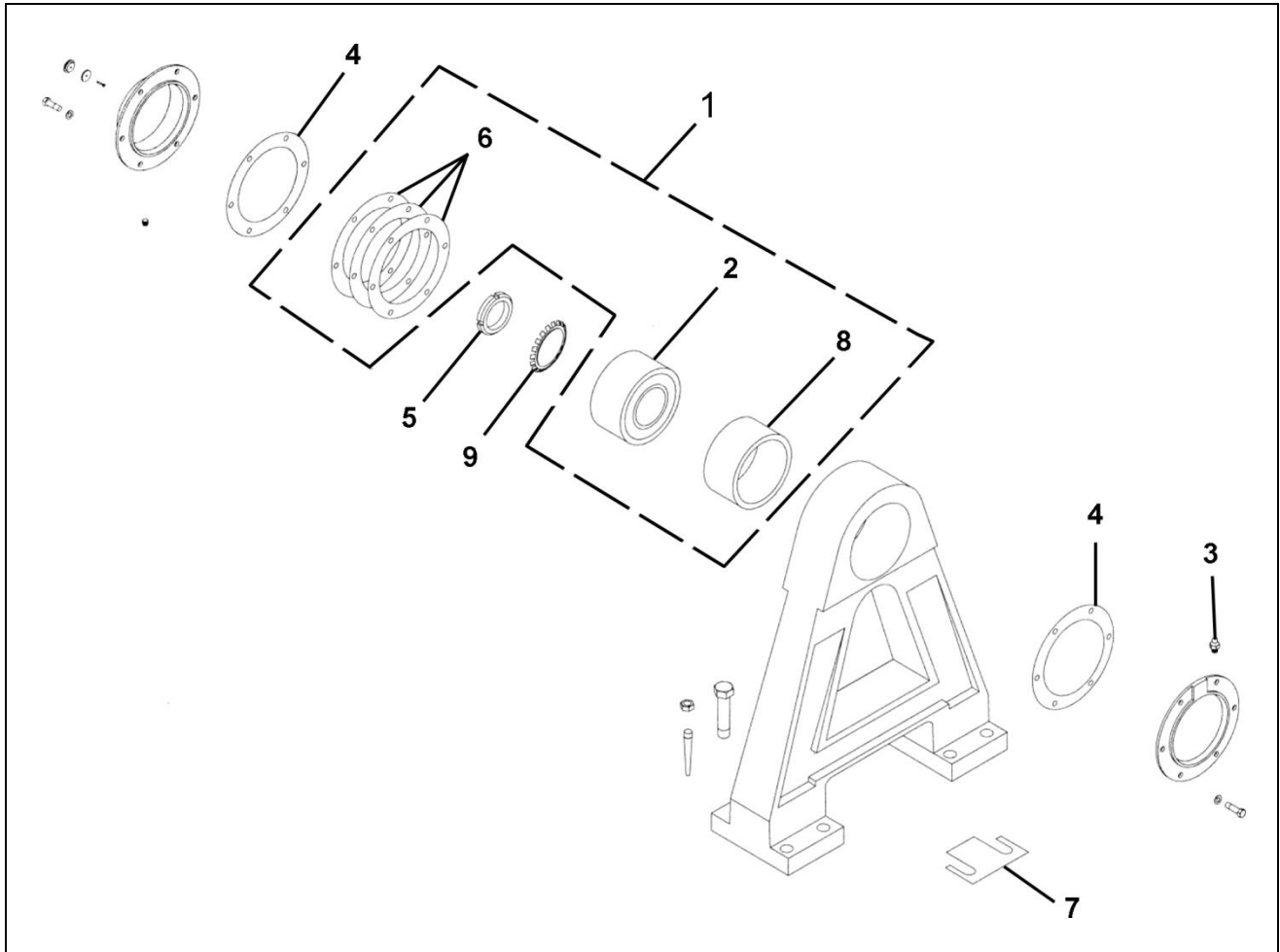


<b>W/O VINTAGE</b>		
<b>REF. No.</b>	<b>PART No.</b>	<b>DESCRIPTION</b>
1	500AA3 A500AA3	Assembly, Sheave Shaft
2	58XA104	Bolt, Sheave Retaining, 3/4 in. – 10 x 5-1/2 in.
3	NUT FH3/4-10	Nut, 3/4 in. – 10
*	50ABK	Seal, “Drum Neck” (Order 3 ft. and cut to suit)
*	91AK2	Spring, Seal Retaining (Order 2 ft. and cut to suit)
4	130F31	Washer, Spring Lock, 3/4 in.

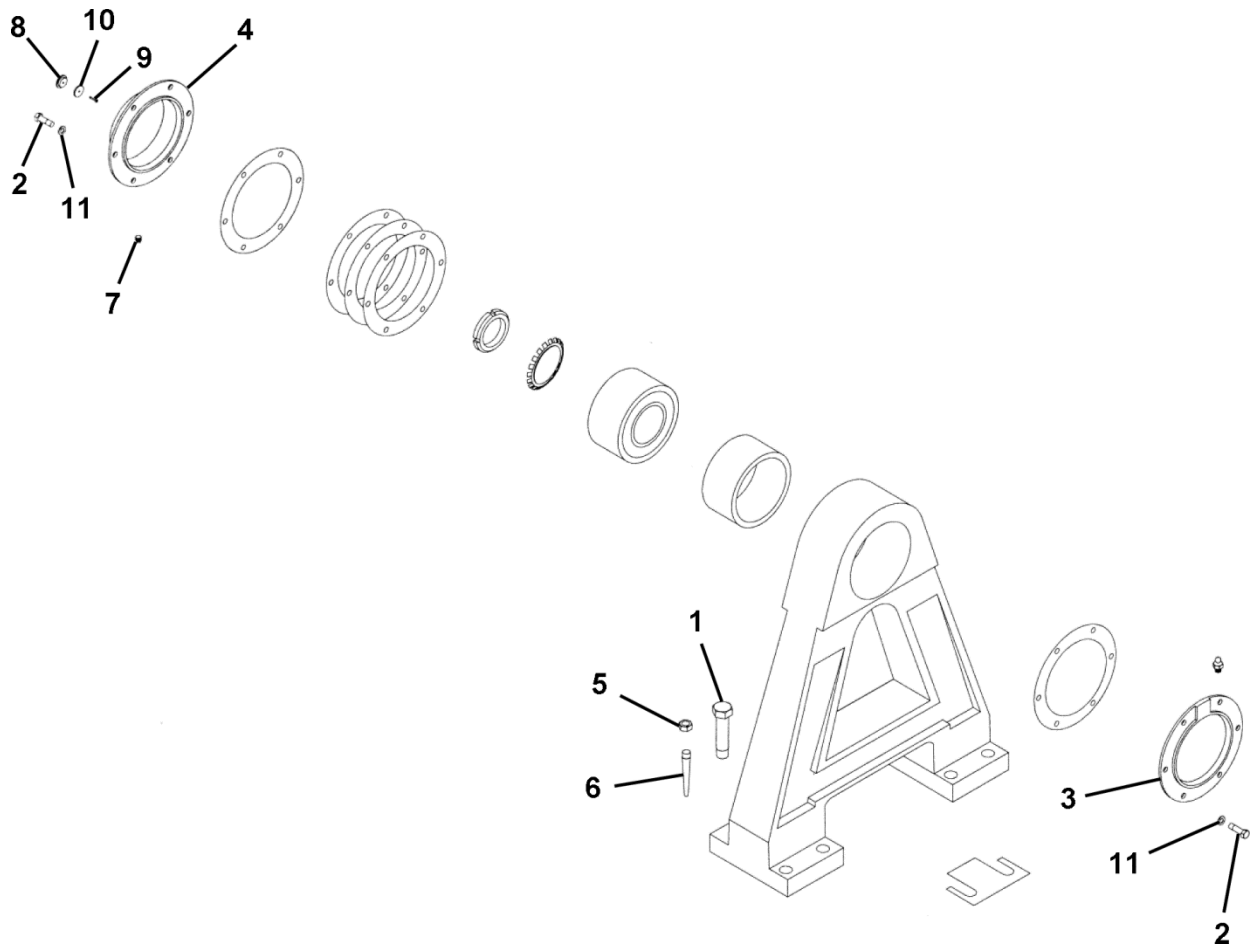
\* Part not shown.

# 38BT Sheave Side Bearing Parts

**06-B6853A**



W/O VINTAGE		
REF. No.	PART No.	DESCRIPTION
1	209D3 2700ADD7	Bearing, Kit
2	209D13	Bearing, Sheave Side
3	435C2	Fitting, Lubrication
4	376JA2	Gasket, Cover
5	72BV5	Nut, Bearing
6	255HB83	Shim, Bearing Cover, 0.003 in. Thick
	255HB84	Shim, Bearing Cover, 0.0075 in. Thick
	255HB85	Shim, Bearing Cover, 0.020 in. Thick
7	255LA6	Shim, Outboard Bearing Stand, 0.006 in. Thick
	255LA7	Shim, Outboard Bearing Stand, 0.0082 in. Thick
8	462W58	Sleeve, Bearing
9	130AA5	Washer, Tabbed

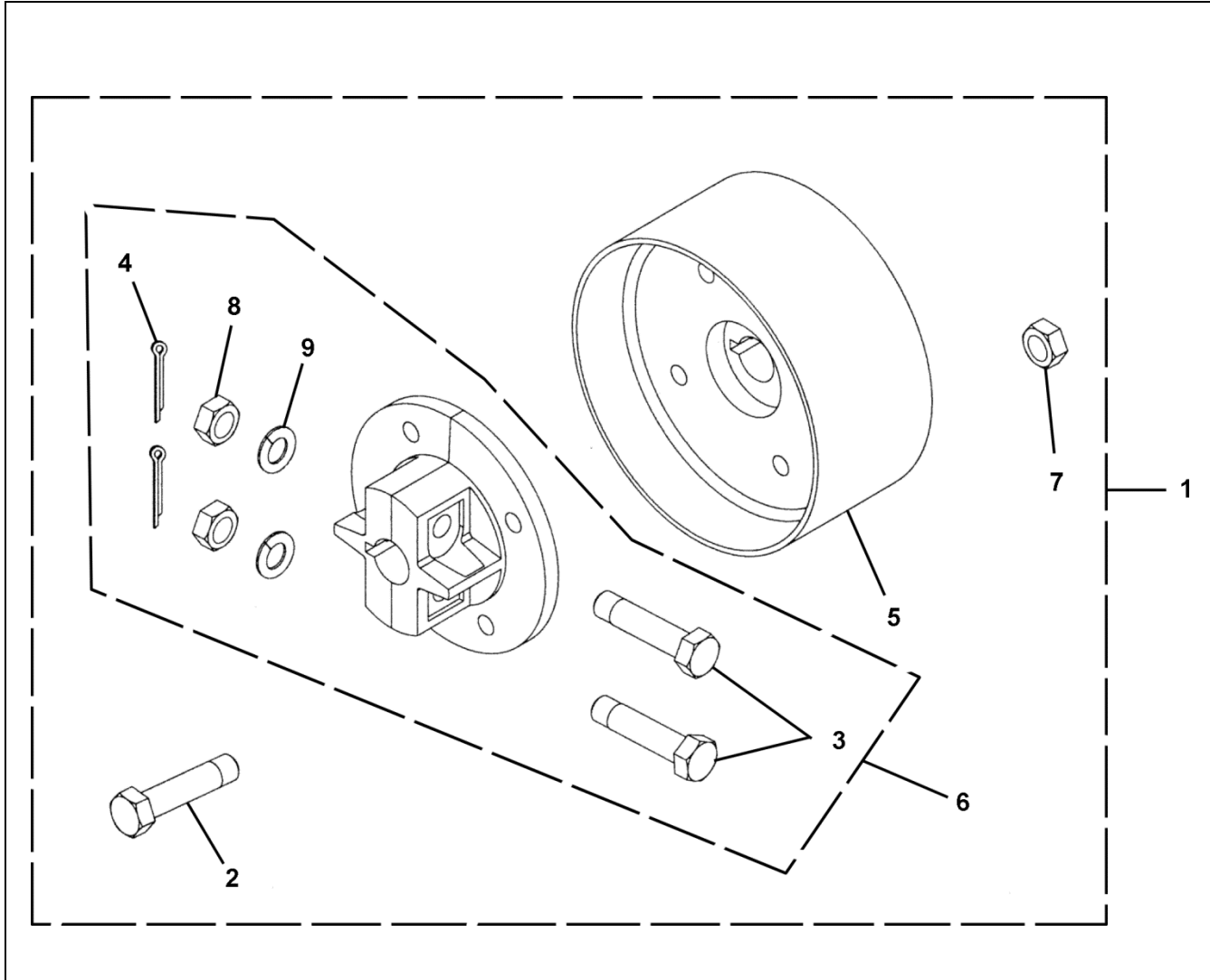
**06-B6853A****38BT Bearing Stand Parts**

	<b>W/O VINTAGE</b>	
<b>REF. No.</b>	<b>PART No.</b>	<b>DESCRIPTION</b>
1	58XA75	Bolt, 1-1/4 in. – 7 x 3-1/2 in.
2	BTFH 5/8X1-3/4	Bolt, 5/8 in. – 11 x 1-3/4 in.
3	346MG1	Cover, Inner
4	346NK1	Cover, Outer
5	NUT FH5/8	Nut, 5/8 in. – 11
6	80C1	Pin, Taper
7	377DF1	Plug, Pipe, 1/4 in.
8	444P1	Plug, Side Cover
9	SCMA P1/4-20X7/8	Screw, 1/4-20 x 7/8 in.
10	127VB18	Washer, 1/4" Oversized
11	130F30	Washer, Spring Lock, 5/8 in.

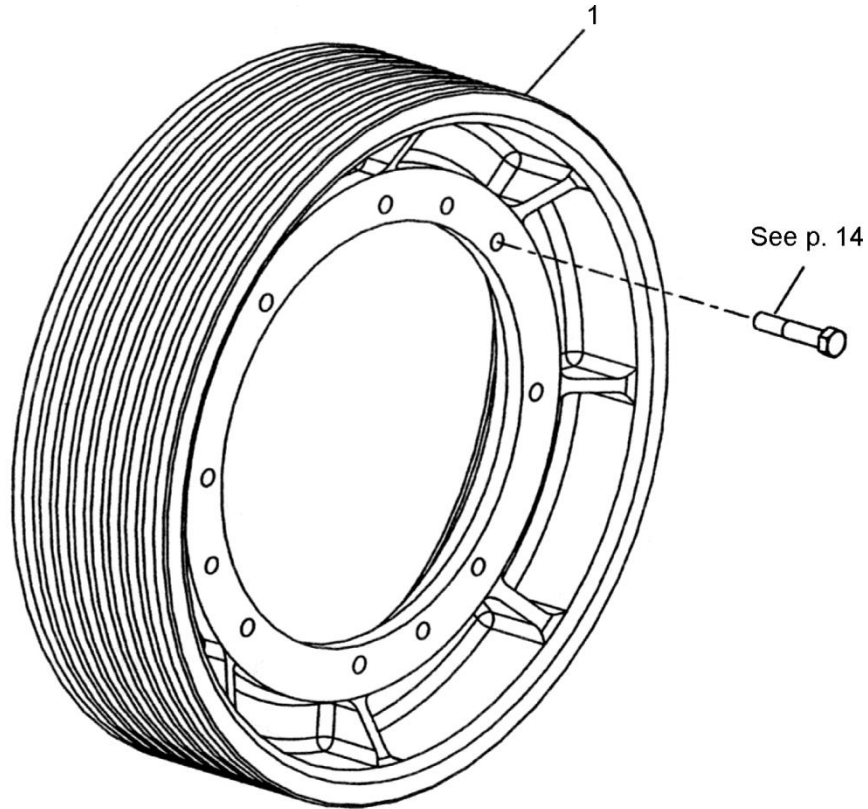


# 38BT Machine Brake Coupling

**06-B6853A**



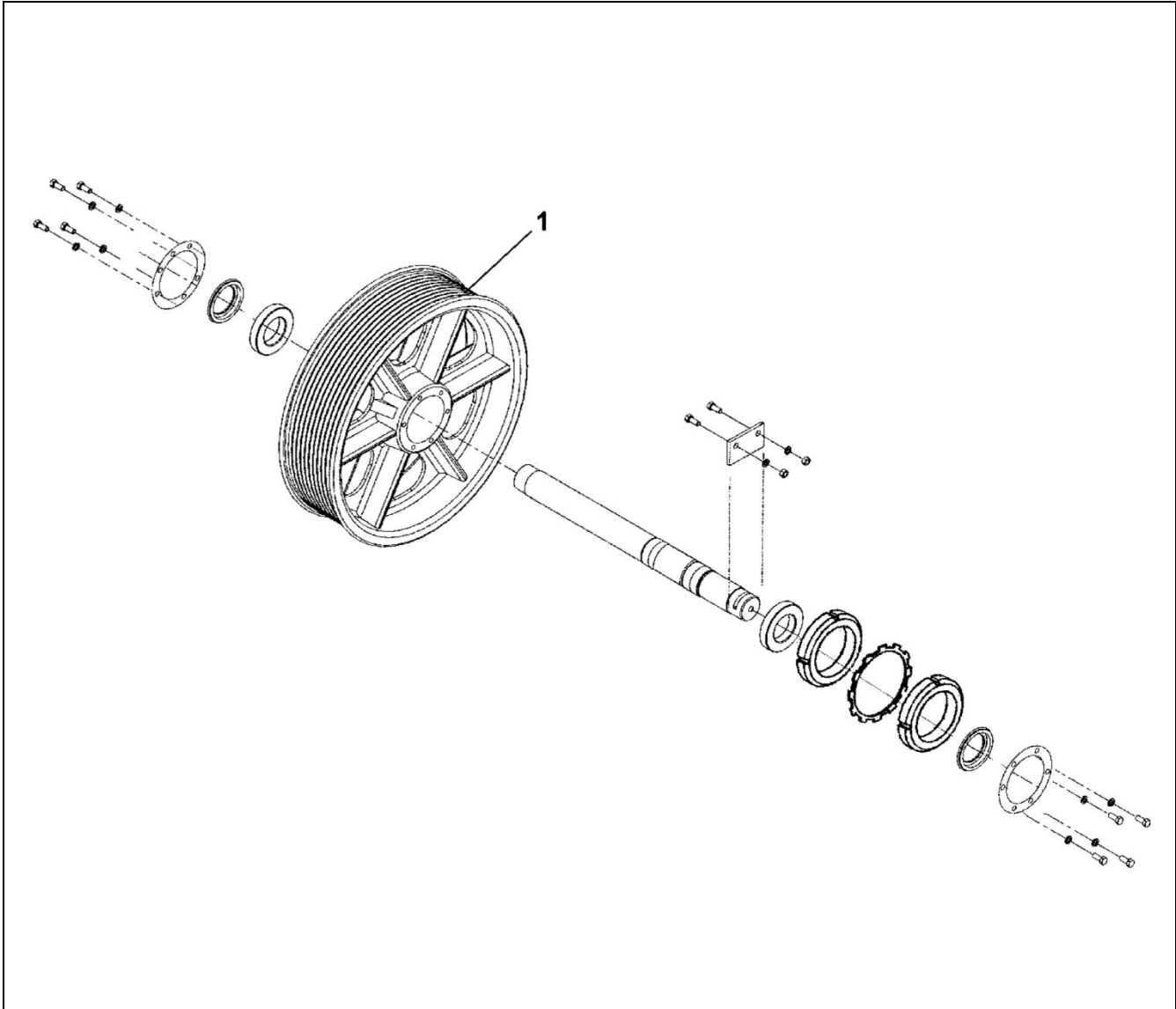
		<b>W/O VINTAGE</b>		
<b>REF. No.</b>	<b>Part No.</b>		<b>DESCRIPTION</b>	
1	216W14	7006R1	Assembly, Coupling Complete	
2	83B2	83B10	Bolt	
3	83B9		Bolt	
4	PIN COT1/8X1-1/2		Cotter Pin, 1/8 in. x 1-1/2 in.	
5	216W13	---	Coupling, Female, Straight Bore	
	---	216AL1	Coupling, Female, Tapered Bore	
6	216J2	216AM1	Coupling, Male	
7	67H6		Nut	
8	70F8		Nut	
9	130F32		Washer, Spring Lock, 7/8 in.	

**06-B6853A****38BT Drive Sheave**

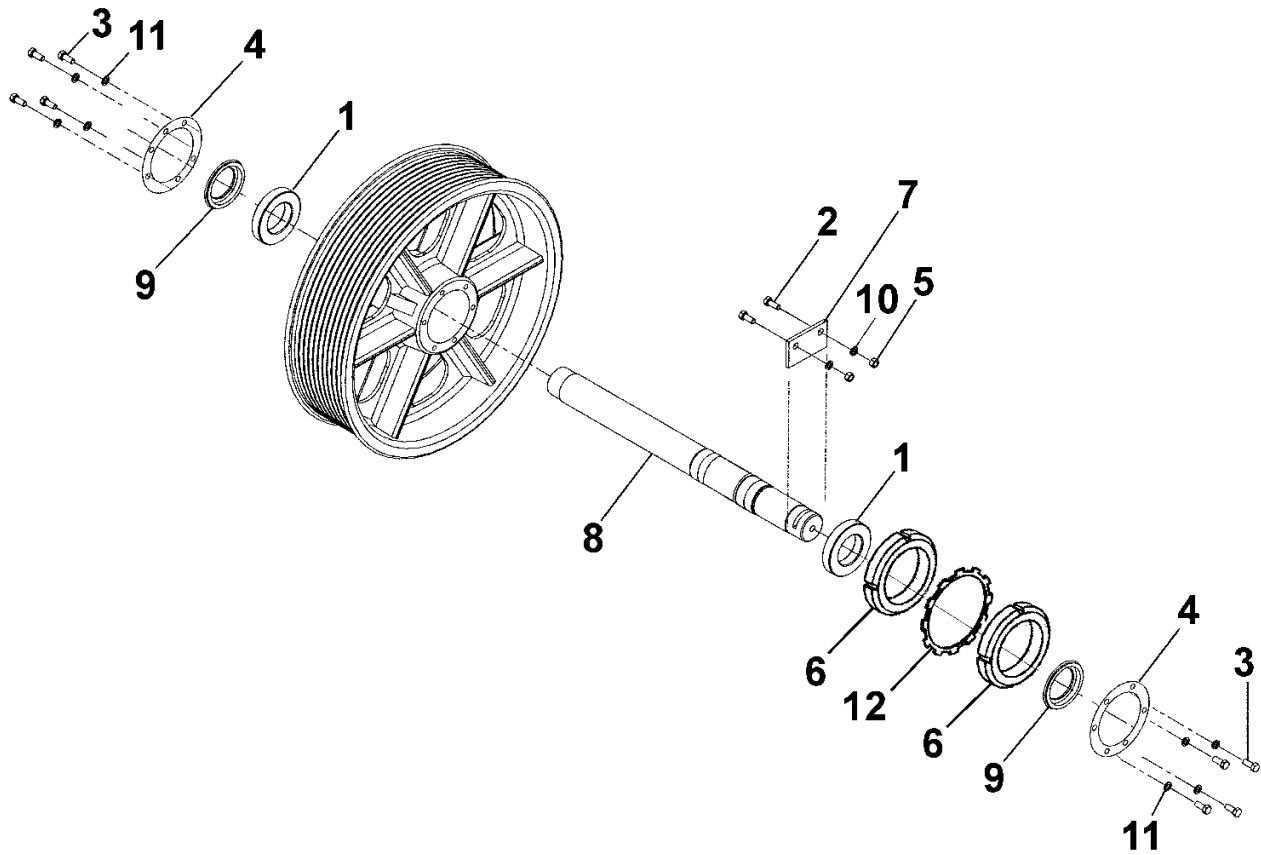
	W/O VINTAGE						
	PART No.			DESCRIPTION			
	PROGRESSIVE GROOVE TYPE	UNDERCUT GROOVE TYPE		ROPES		RIM WIDTH "W" (in.)	SHEAVE DIA (in.)
REF. No.	30°	90°	105°	No.	DIA (in.)		
1	808012 260AA7	808013 260AA8	808014 260AA9	6	5/8	6-3/4	34
	---	260AF3	260AF4				
	807268	807270	806438	7			
	807269	807271 260AF1	806439 260AF2	8			
	808029	808030 260AG3	808031 260AG4	6		8-3/4	38
	811850	811851	811852	7			
	807505	807506 260AG1	807507 260AG2	8			
	807256	807257	807258	6			
	---	---	807510	7		40	
	807511	807512	807513	8			
	807853	807854	807855	6		6-3/4	44

# Deflector Sheave

**06-B6853A**



		<b>W/O VINTAGE</b>			
		<b>B6854A, A6854A, 6854A</b>		<b>ROPES</b>	
<b>REF. NO.</b>	<b>PART NUMBER</b>	<b>NO.</b>	<b>SIZE (in.)</b>	<b>DESCRIPTION</b>	
1	263BA6	6	1/2	Sheave, Deflector, 30 in. Diameter	
	A263AK2 263BA2		5/8		
	263BA4	7			
	A263AK1 263BA1	8			
	263AK2	6		Sheave, Deflector, 34 in. Diameter	
	263AK1	8			



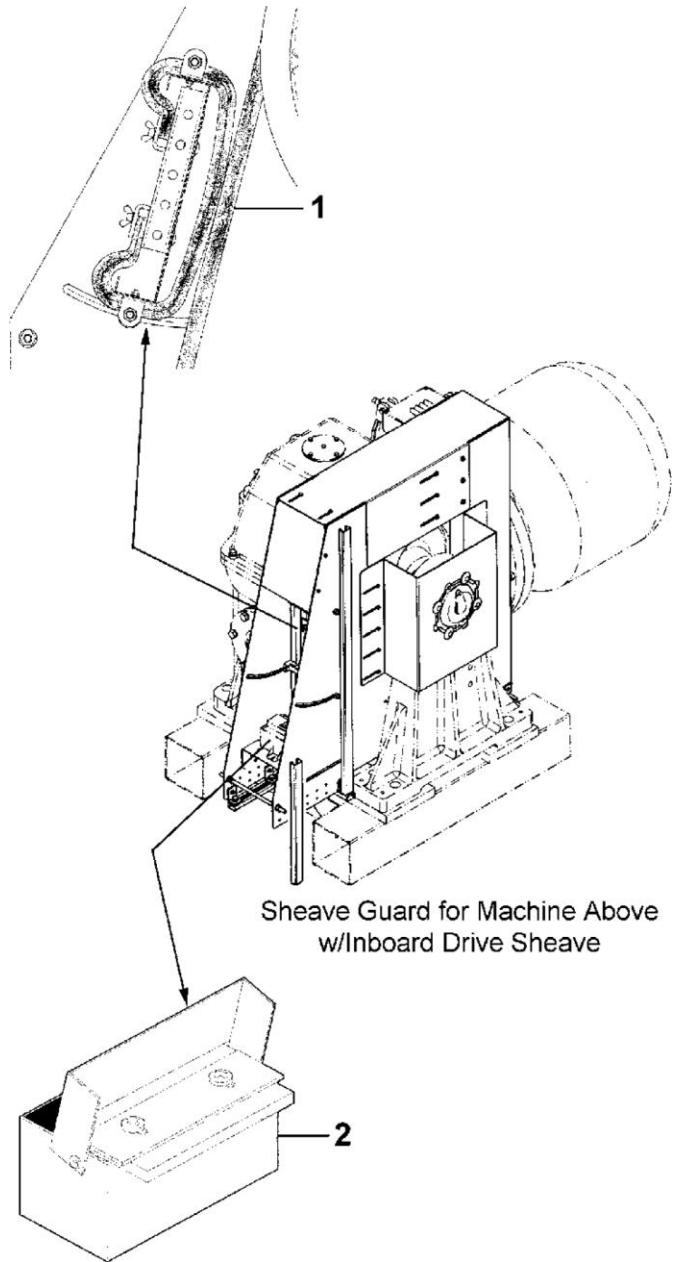
**W/O VINTAGE**  
**B6854A, A6854A,**  
**6854A**

REF. No.	PART NUMBER	DESCRIPTION
1	209B15	Bearing
2	See Description	Bolt, 1/2 in. - 13 x 1-3/4 in., Zinc Plated, Grade 5 (or higher)
3	See Description	Bolt, 1/2 in. - 13 x 1-3/8 in., Zinc Plated, Grade 5 (or higher)
4	172FD2	Cover
*	435C2	Fitting, Grease
5	NUT FH1/2CP	Nut, 1/2 in. - 13, Zinc Plated
6	72BV5	Nut, Bearing
7	386VH1	Plate, Retainer
8	495AP2	Shaft
9	462JA4	Spacer
10	130F29	Washer, 1/2 in. Spring Lock, Zinc Plated
11	130A8	Washer, 5/16 in. Spring Lock, Zinc Plated
12	130AA5	Washer, Tabbed

\* Parts not shown.

# Sheave Guards

**06-B6853A**



<b>W/O VINTAGE</b>		
<b>REF. No.</b>	<b>PART No.</b>	<b>DESCRIPTION</b>
1	AAA297AY5	Strip, Carpet, 8.7 in. Wide
2	AAA488M5	Wick, Lubricator, 9 in. Wide

**NOTE:** See TIP 6.2.5-1, #4 and 38BT Overhead Geared Machine Sheave Guard, for sheave guard, carpet wiper, and rope lubricator installation instructions.