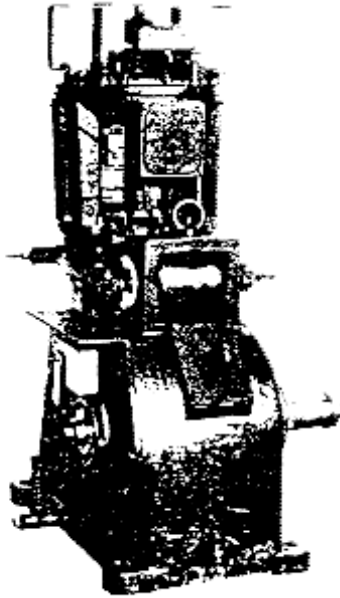
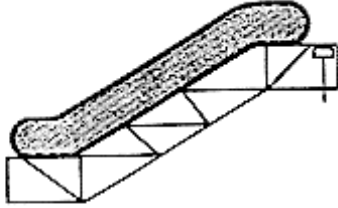


SPL 06-BAA20400A - 16 VEC Machine With Motor 2744

Unpublished Work - © Otis Elevator Company. Any unauthorized reproduction, disclosure, or distribution of copies or content by any person of any portion of this work may be a violation of Copyright Law of the United States of America. All rights reserved.

June 1993

Page 1



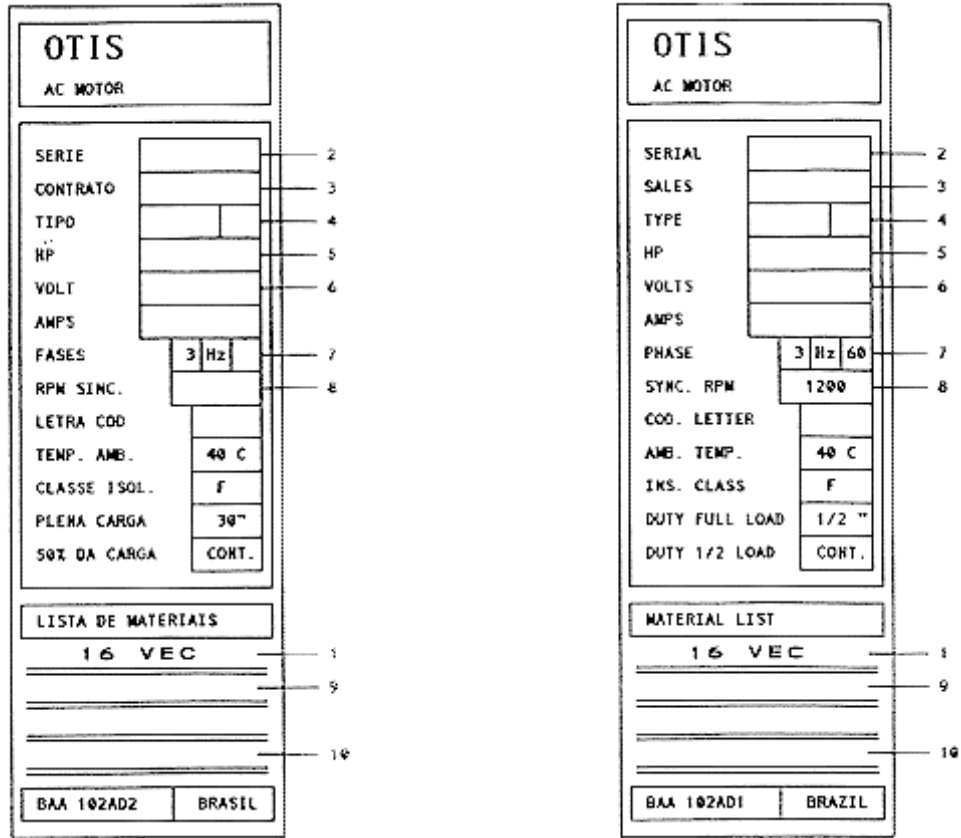
SPL 06-BAA20400A - 16 VEC Machine With Motor 2744

Page 2

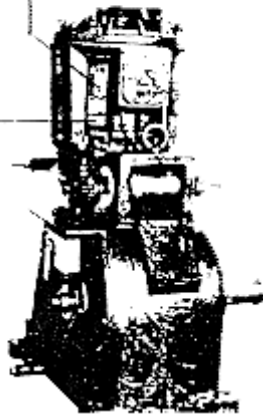
TO ORDER A MACHINE PROVIDE THE FOLLOWING INFORMATIONS.
INFORMACIONES NECRSARIAS PARA HACER UM PEDIDO DE MACHINA.
INFORMACOES NECESSARIAS PARA FAZER UM PEDIDO DE MAQUINA.

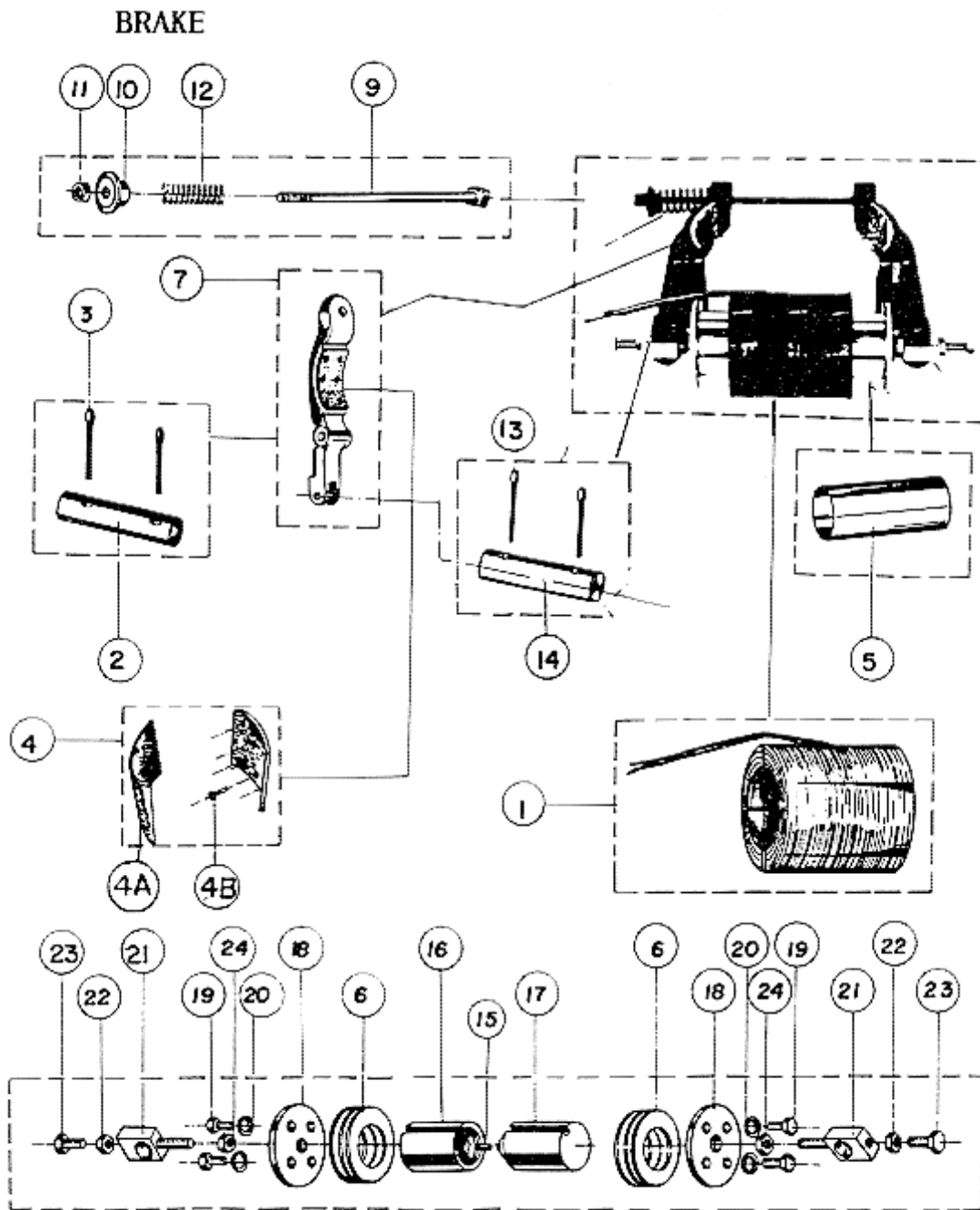
TYPE OF MACHINE TIPO DE TRATOR TIPO DE MAQUINA	1
SERIAL NUMBER NUMERO DE SERIE NUMERO DE SERIE	2
CONTRACT NUMBER NUMERO DE CONTRATO NUMERO DE CONTRATO	3
TYPE OF MOTOR TIPO DE MOTOR TIPO DE MOTOR	4
HP, CV OR Kw HP, CV OR Kw HP, CV OR Kw	5
VOLTS VOLT VOLTS	6
FREQUENCY FREQUENCIA FREQUENCIA	7
RPM RPM RPM	8
STATOR WITH WINDING INDUCIDO EMBOBINADO ESTATOR BOBINADO	9
COMPLETE MACHINE TRATOR COMPLETO MAQUINA COMPLETA	10

SPL 06-BAA20400A - 16 VEC Machine With Motor 2744



06 BAA 20400A
B VINTAGE B01





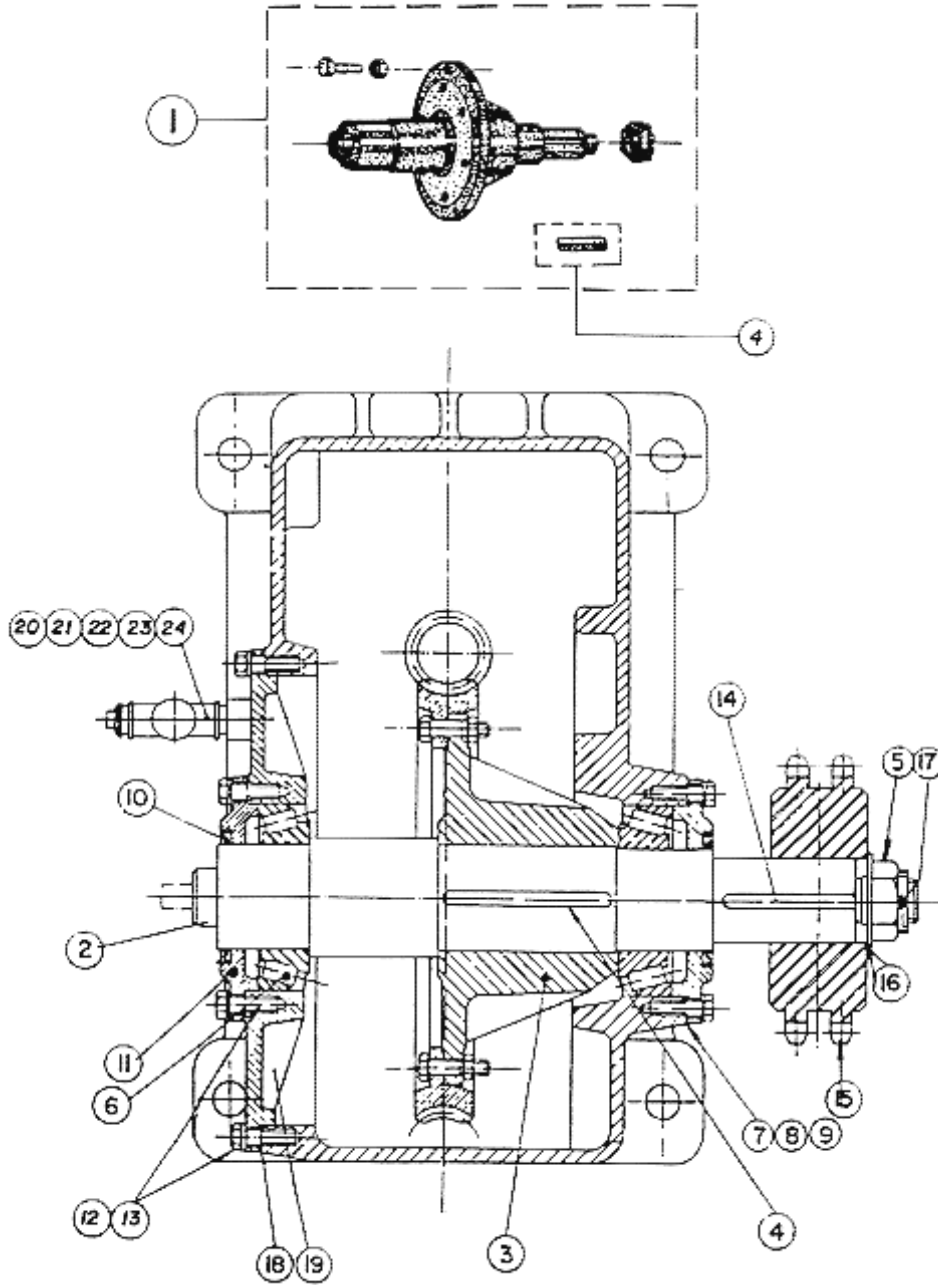
SPL 06-BAA20400A - 16 VEC Machine With Motor 2744

Page 5 - BRAKE

VINTAGE B01				
REF. NUM.	QTD	DESCRIPTION	PART NUMBER	
1	1	MAGNETIC COIL	BAA234C1	
2	1	PIN	82A5	
3	2	COTTER PIN	13XX181100	
4	4A	LINING	NAO	416AJ1
			LAO	416AJ1
	4B	16	RIVET	145C2
5	1	TUBE MAGNET CORE	136R12	
6	12	SHIM	255CK3	
7	2	COMPLETE LEVER	NAO	BAA286A1
			LAO	286AL2
8	1	BOLT	GX60D47	
9	1	WASHER	133AF1	
10	1	HEX. NUT (M12 DIN 934)	43SD182500	
11	1	SPRING	BX90KC4	
12	2	COTTER PIN (3x25 DIN 94)	13XX181200	
13	1	PIN	BO82E1	
14	1	PIN	81BM1	
15	1	CORE	AGX400FH1	
16	1	CORE	AGX400FG1	
17	2	DISC	353BB2	
18	2	HEX. SCREW (CS M8x20 DIN 933)	40SD184980	
19	2	LOCK WASHER (B8 DIN 127)	03PG181000	
20	2	BOLT	GX65BA2	
21	2	CTR NUT (M16x1.5 DIN 936)	14SD180800	
22	2	HEX. SCREW (CS BM12x1.5x40 DIN 561)	40SD181530	
23	2	CTR NUT (M16x1.5 DIN 936)	14SD180800	

Page 6 - SHAFT ASSEMBLY

S H A F T A S S E M B L Y



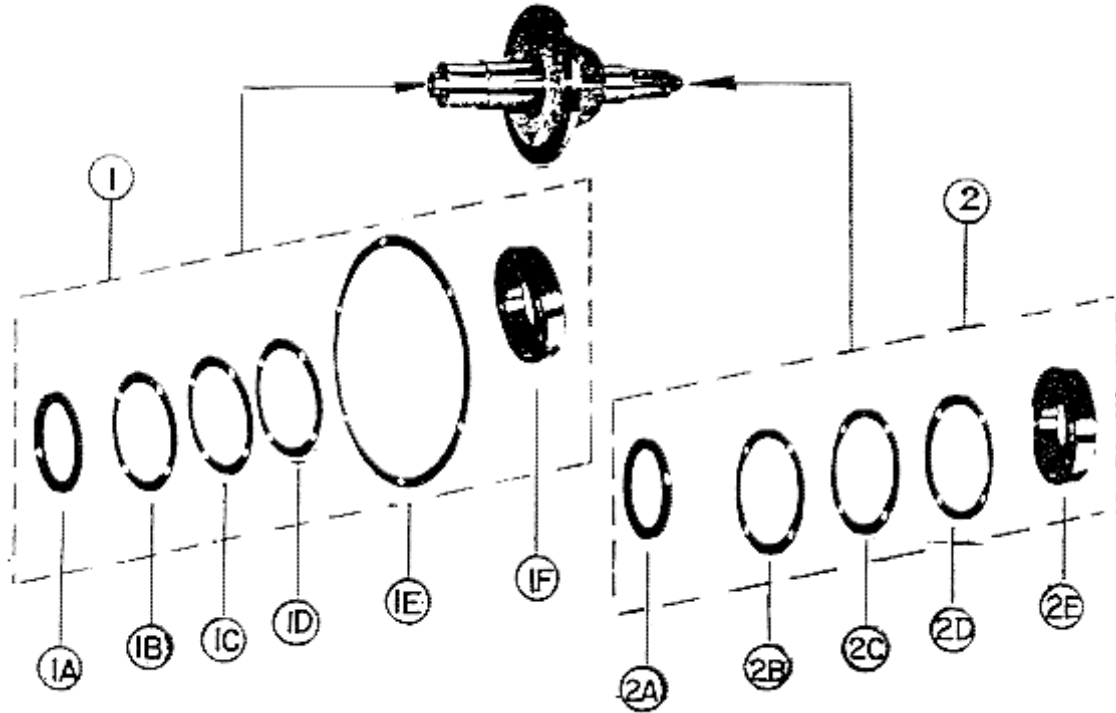
SPL 06-BAA20400A - 16 VEC Machine With Motor 2744

Page 7

VINTAGE B01							
REF. NUM.	DESCRIPTION					PART NUMBER	
1	MOUN TING SHAFT					BAA494G2	
2	SHAFT					BAA494G1	
3	HUB					397AB1	
4	KEY					192G13	
5	FIN NUT (M42x1.5 DIN 937)					43SD183430	
6	ROLLER BEARING					GO209A2	
7	GASKET					GX376J502	
8	SHIM					GX255HB501	
9	SHIM					GX255HB502	
10	SEAL					GO33C20	
11	COVER					AGX346KW501	
12	LOCK WASHER (PRS B12 DIN 127)					O3PG182800	
13	HEX. SCR (CS M12x35 DIN 933)					40SD185340	
14	KEY					192D24	
15	SPROCKET	CYCLES	50HZ		60HZ		
		STEP	600	1000	600	1000	
		PART NUMBER	BAA195B2	BAA195B1	BAA195C1	GOA195AP1	
16	WASHER (43 DIN 125)					O3PB182800	
17	COTTER PIN (8x75 DIN 94)					13XX182050	
18	GASKET					376JA6	
19	COVER					AGX396BR501	
20	PIPE					BX377KA502	
21	PIPE (3/4 - B1 DIN 2982)					39XX180200	
22	TEE (3/4 - B1 DIN 2950)					54XX180300	
23	PLUG (3/4 T9 DIN 2950)					05XX180400	
24	PIPE CAP (3/4 T2 DIN 2950)					53XX180300	

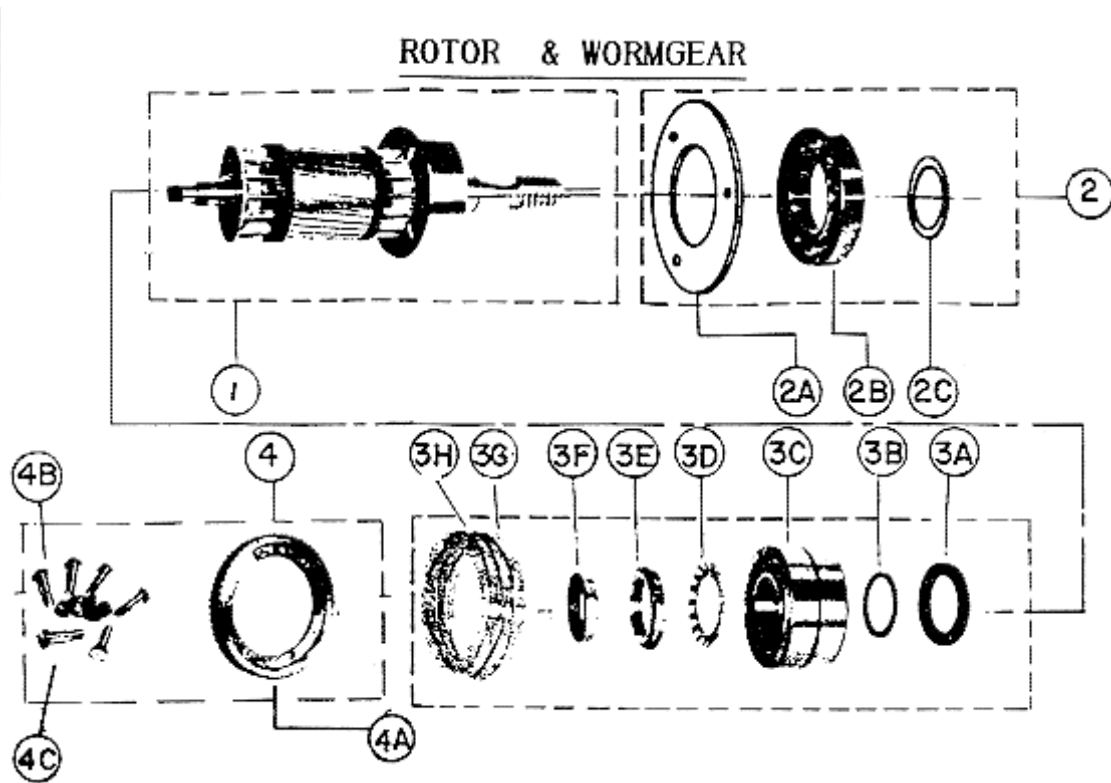
Page 8 - SPROCKET SHAFT ASSEMBLY

SPROCKET SHAFT ASSEMBLY



VINTAGE B01				
REF. NUM.		QTD	DESCRIPTION	PART NUMBER
1	1A	1	SEAL	GO33C20
	1B	1	GASKET	GX376J502
	1C	6	SHIM	GX255HB501
	1D	6	SHIM	GX255HB502
	1E	1	GASKET	376JA6
	1F	1	ROLLER BEARING	GO209A2
2	2A	1	SEAL	GO33C20
	2B	1	GASKET	GX376J502
	2C	6	SHIM	GX255HB501
	2D	6	SHIM	GX255HB502
	2E	1	ROLLER BEARING	GO209A2

Page 9 - ROTOR & WORMGEAR



VINTAGE B01			
REF. NUM.	QTD	DESCRIPTION	PART NUMBER
1	1	WORM SHAFT+ROTOR+PULLEY+FAN	BAA20400D1
2	2A	COVER	BGX346PZ2
	2B	ROLLER BEARING	207Z41
	2C	RETAINING RING AC 80x2.5 DIN 471	O1RF031200
3	3A	SEAL A50x72x8 DIN3760	47XX180100
	3B	APACER	GX462W501
	3C	ROLLER BEARING	207AR9
	3D	WASHER	BX130AA1
	3E	NUT	BX72BJ11
	3F	SEAL	33D15
	3G	SHIM	GX255HB503
	3H	SHIM	GX255HB504
4	4A	WORM GEAR	200AZ6
	4B	HEX. BOLT	BAA84A1
	4C	NUT M12x1.5 DIN 982	43SD183525

S T A T O R



VINTAGE B01

GIVE INFORMATION ③ ON PAGE 2, WHEN ORDERING A STATOR.

FORNECER A INFORMACAO ③ DA PAG. 2 , QUANDO PEDIR UM ESTATOR.

AL PEDIR UN ESTATOR, DAR INFORMACION ③ DE LA PAGINA 2.