

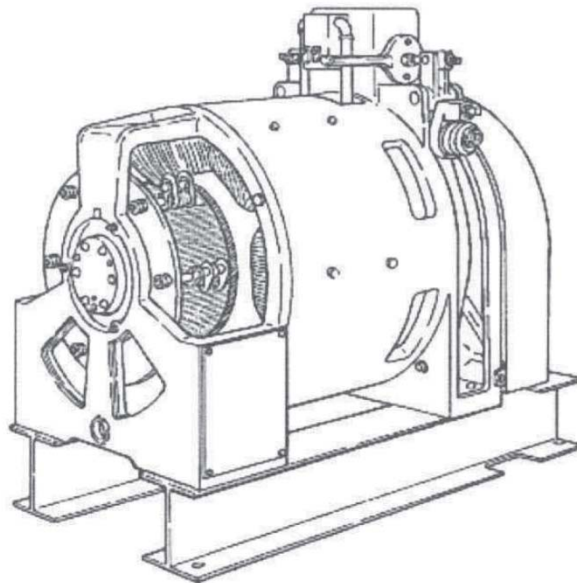
131HT Machine  
(Manufactured by  
Nippon Otis)

Spare Parts Leaflet

06-D6847J

October 10, 2018 / Page 1 of 10

ML. No.	JX2065F500	}	Machine Motor and Brake Parts
or	JX2065F501		
	JX6931A1	}	Brake Switch
	JX2063E1		Armature
	6134B5	}	Brush Holder
	6134B6		
DWG. No.	D6847J		ARR. & ASSY.
	6847W		MTG. Brush Holder
	JX260AJ		Driving Sheave



**OTIS**

This document does not contain any  
technical data subject to EAR or ITAR

SERVICE ENGINEERING

Otis Elevator Company

Bloomfield, Connecticut USA

Unpublished Work—© Otis Elevator Co.; 2018

## Leaflet Description

This leaflet provides spare parts information for 131HT Machines manufactured by Nippon Otis.

### Leaflet Revisions

Date Revised	Subject Matter Expert	Reason for Revision
April 1987	----	New SPL
October 10, 2018	Gary Mendrala	Updated information to include brake switch kit information; Updated document template

### Related Drawings

Drawing No.	Title	Drawing No.	Title
---	---	---	---

### Related Documents

Document ID	Title
---	---

### Subject Matter Expert

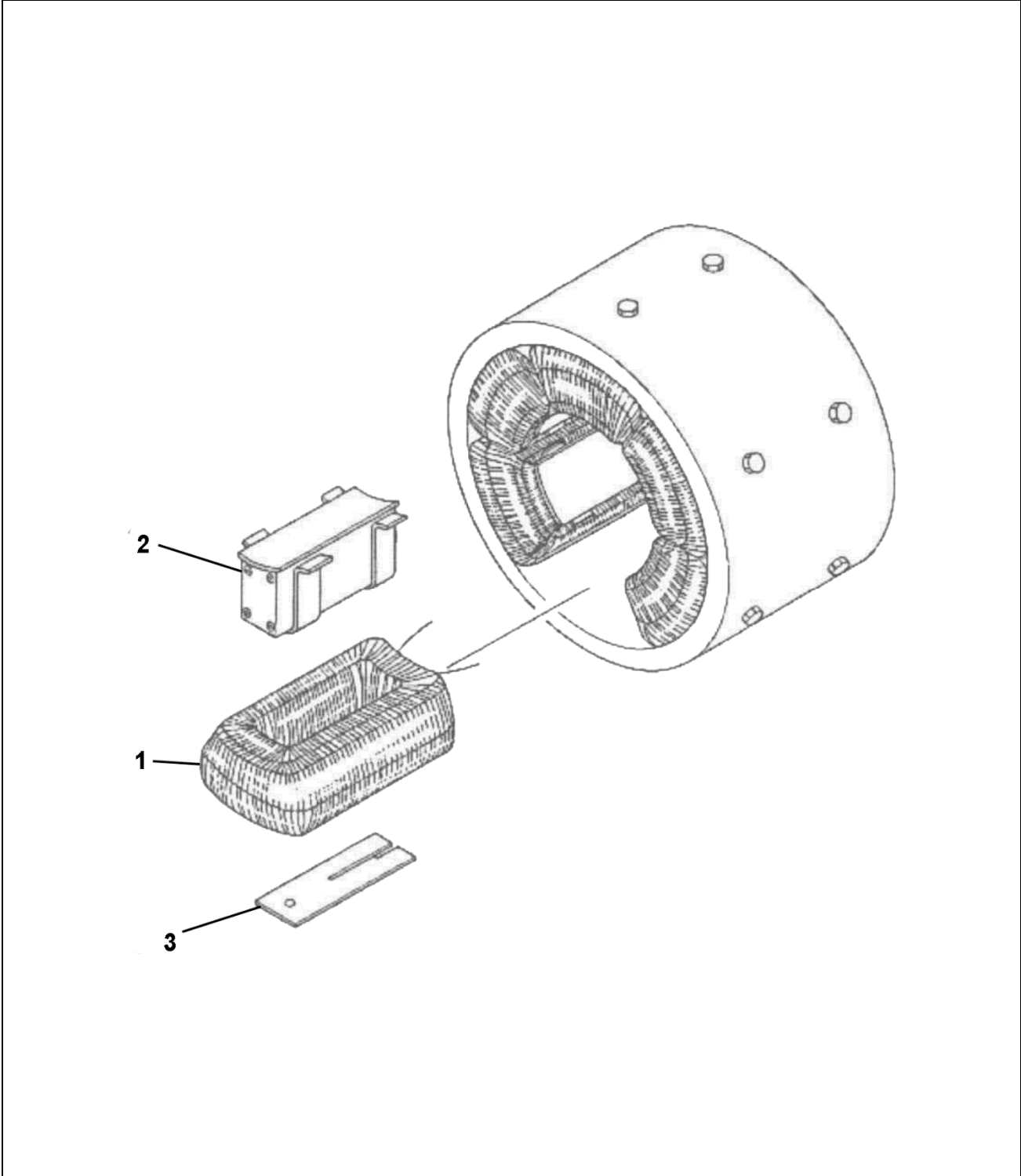
Name	Department
Gary Mendrala	OSC Service Engineering

### About Spare Parts Leaflets...

This document lists the lowest replaceable units (LRUs) for the standard version of the product. The LRUs are chosen by a team of Otis associates representing engineering and manufacturing.

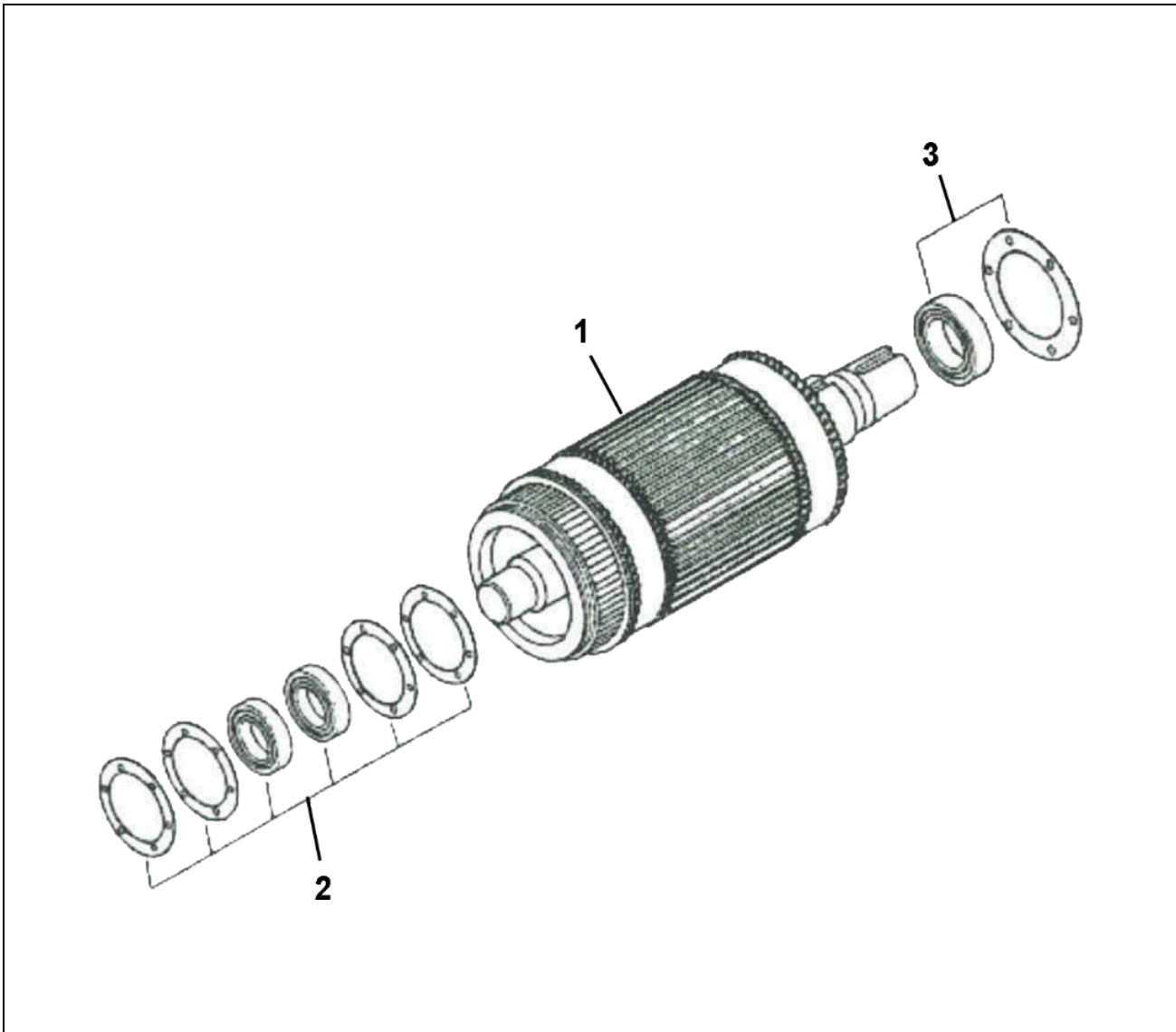
While goal of this document is to make parts identification as easy as possible, the document cannot be all-inclusive. Elevator and escalator contracts classified as “special” or “custom” are not addressed here. For such contracts, please refer to specified information, the contract folder, TIPs, Field Education Articles, Construction Letters, etc. for further information.

If you have any suggestions about this document, please contact the subject matter expert listed on this page.



Ref. No.	Description	Part No.	Quantity
1	Coils, Field	221BD1	6
2	Pole Piece	JX355AJ1	6
3	Shim	255BL5	(20)

# Type 131HT Gearless Machine Armature Assembly

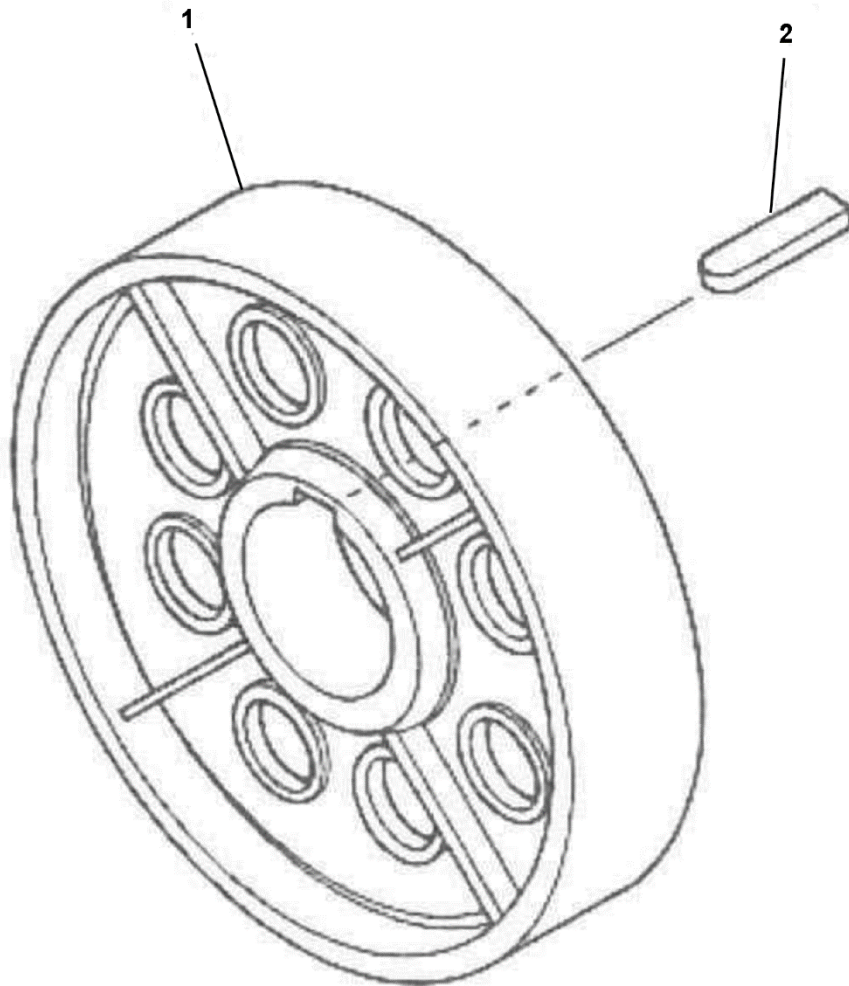


Ref. No.	Description	Part No.	Quantity	
1	Assembly, Armature (contact spare lending)	JX2063E1*	1	
2	Bearing and Gasket	Bearings	209B21	2
		Gaskets (Shims)	A376CB1	1
			255BM3	5
			255BM4	5
3	Bearing and Gasket	Bearing	209P1	1
		Gaskets (Shims)	255CG1	2

**\* Except Following Parts**

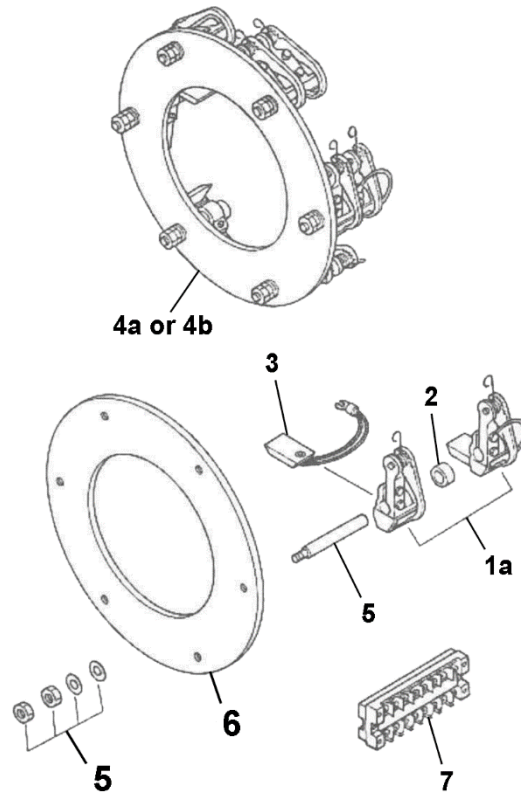
- (1) 198Y1 Pulley, Brake
- (1) 192G107 Key, Steel
- (1) 192D37 Key, Steel

Brake Pulley



Ref. No.	Description	Part No.	Quantity
1	Brake Pulley	198Y1	1
2	Key, Steel	192G107	1

# Type 131HT Gearless Machine Brush and Holder Assembly



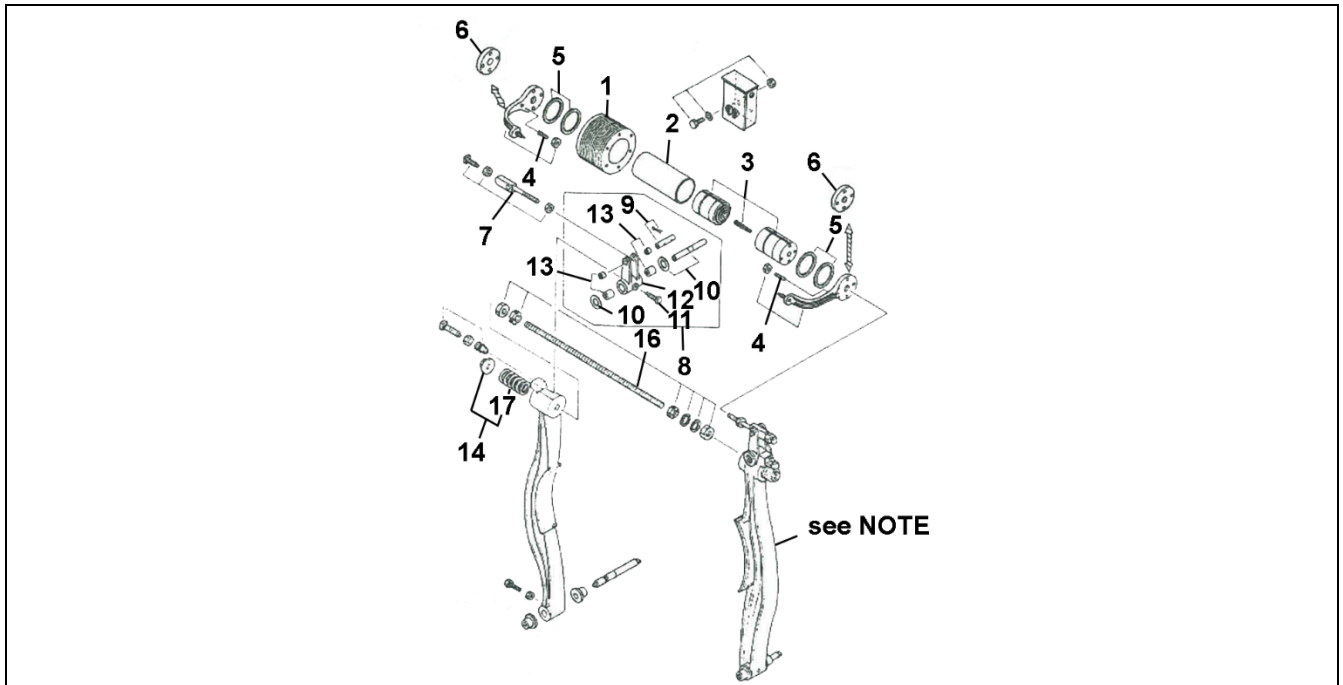
Ref. No.	Description		Part No. & ML No.	Quantity
1a	Brush Holder	Elevonic 401	6134B5*	12
	I.D = 22.3 mm (0.878 in.)	Other		10
1a+2	Brush Holder + Insulation Strip	Elevonic 401	ML No.	0
	I.D = 22.9 mm (0.903 in.)	Other	6134B6	2
2	Insulation Strip (Other than Elevonic 401)		298DF129	2
3	Brush		240P3**	12
4a	(12)1a+(12)3+5+6	Brush Ring Set Complete	-	(Elevonic 401)
4b	(12)1a+(2)2+(12)3+5+6	Brush Ring Set Complete	-	(Other)
5	Brush Stems and Fastening	Brush Stems	J0474A1	6
		Washers	127VB42	6
			JJX127VB94	6
		Wash. Bellv.	130R6	6
		Pins, Spring	JX81AX44	6
		Nuts, Fin, Hex.	M12x1.25	12
	Jam (Brass)			
6	Brush Ring		J0172DD1	1
7	Term. Board		303P3	1
	SCR. Pan HD.		M5x0.8x16	2

\* Not for use with strip insulation.

\*\* All the brushes used on this motor must be of the same grade.

# Type 131HT Gearless Machine Brake Parts Assembly

06-D6847J

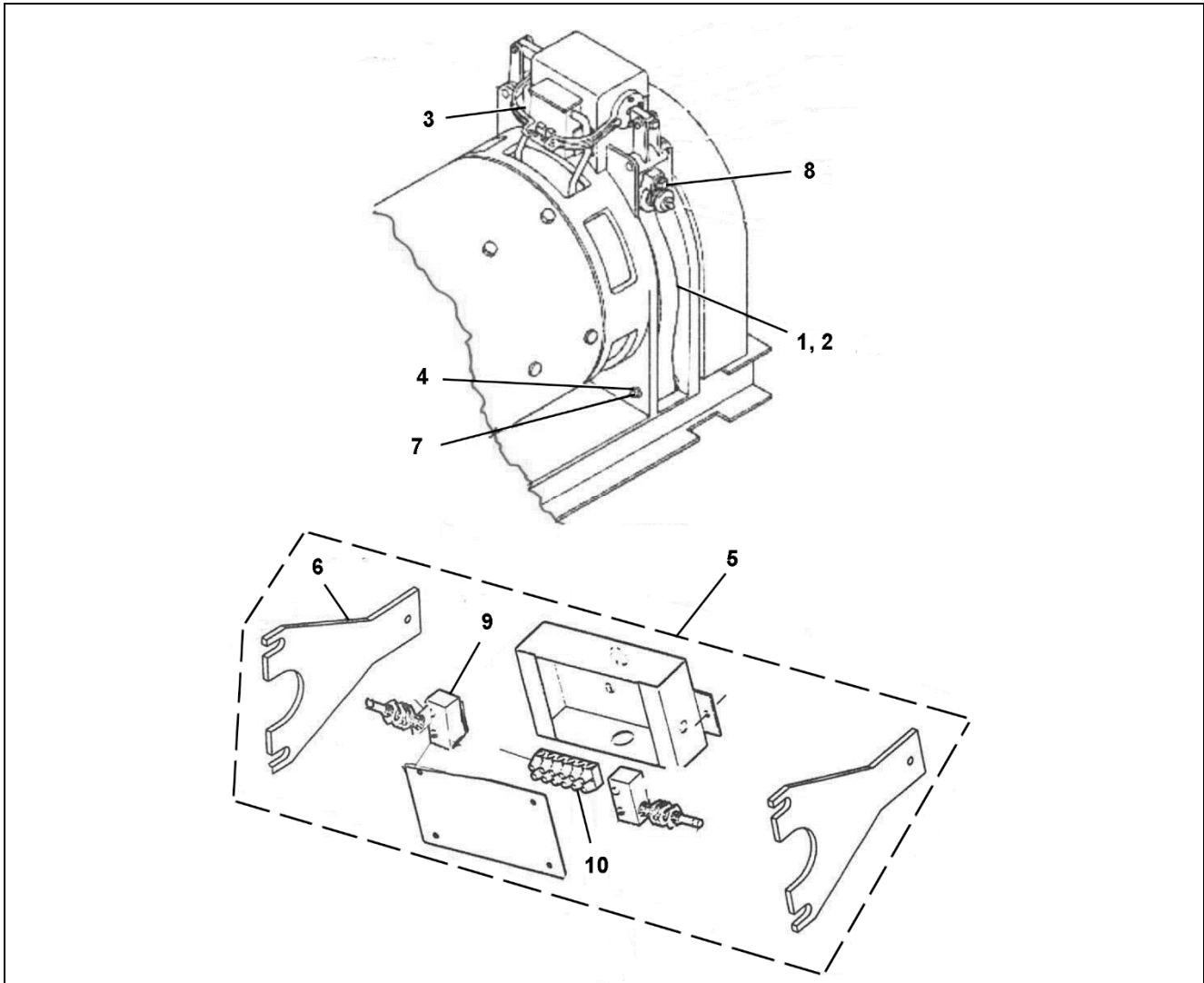


Ref. No.	Description	Part No.	Quantity	
1	Coil, Magnet, Taped	222JA15	1	
2	Tube, Magnet Core	136R10	1	
3	Cores, w/ Pin	Core, Male	JX400DB1	1
		Pin	77RG2	1
		Core, Female	JX400DD4	1
4	Arms, Switch	287AZ2	2	
5	Washers, w/ Screw	Washers	128AG53	13
		Screw Pan Mach	M5x0.8x10	2
6	Disc (Without Switch)	JX353BB501	2	
7	Fastening, for Magnet Cores	Bolts	JX65GA3	2
		Bolts, Fin, & SPR. L/W	M8x32	2
		SQ, HD, Set Screw Half Dog Point	M20x1.5x64	2
		Nuts, Fin, Hex.	M20x1.5	2
		Nuts, Fin, Hex. Jam	M20x1.5	2
8	Kit, Brake Lever	---	(2)	
9	Pin and Cutter Pin	Pin	82R3	2
		Cutter Pin	3x32	4
10	Pin	77LG3	2	
11	Screw, Set SQ, HD, Cup Point	M10x22	22	
12	Lever	JXA288HX1	2	
13	Bearing Needle	For Lever	209A6	4
		For Brake Frame	209A7	4
14	Spring and Rod Parts 16 + 17	-	(1)	
16	Rod, w/ Fastening	Rod	JXA95BF2	1
		Nuts, Fin, Full & Jam	M22	Each 2
		Nuts, Special	JX72CB1	2
		Nuts, Int. L/W	M30	2
17	Spring, Compression	90JD11	2	

**NOTE:** For brake relining, see TIP 6.0-1, *Replacement of Brake Linings*. All gearless machines must use brake arms or shoes that are lined with green gripper and are factory bonded. OSC makes every attempt to rework the same brake arms and shoes.

# Type 131HT Gearless Machine

## Brake Parts Assembly



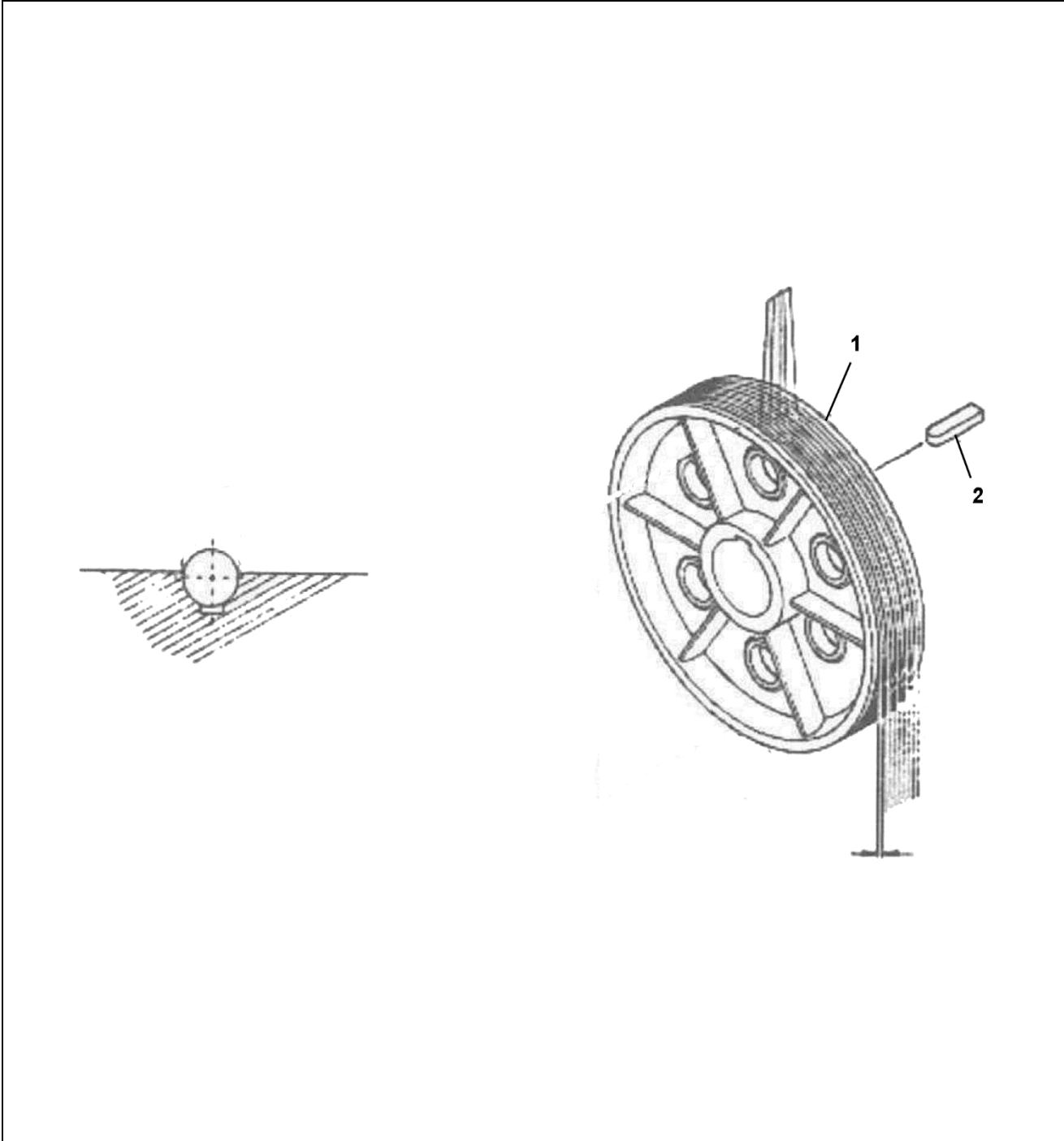
Ref. No.	Description	Part No.	Quantity	
1	Brake Lever, Pin & Bushing	---	---	
2	Brake Lever and Set Bolt, See <b>NOTE</b>	Brake Lever	AJXA288Y1	2
		Bolts, Hex. Fin.	M10x40	2
		Nuts, Fin. Jam	M10	2
3	Brake, Switch	JX6931A1	1	
4	Bushing	335H14	4	
5	Kit, Brake Switch	7013J1	1	
6	Lever	288WE1	2	
7	Pin	J077ER1	2	
8	Pin and Set Screw	Pin	81BN2	2
		Set SCR. SQ. HD Cut Point	M22x1.5x64	2
		Nuts, Fin. Jam	M22x1.5	2
9	Switch	177Y1	2	
10	Terminal, Board	303G2	1	

**NOTE:** For brake relining, see TIP 6.0-1, *Replacement of Brake Linings*. All gearless machines must use brake arms or shoes that are lined with green gripper and are factory bonded. OSC makes every attempt to rework the same brake arms and shoes.



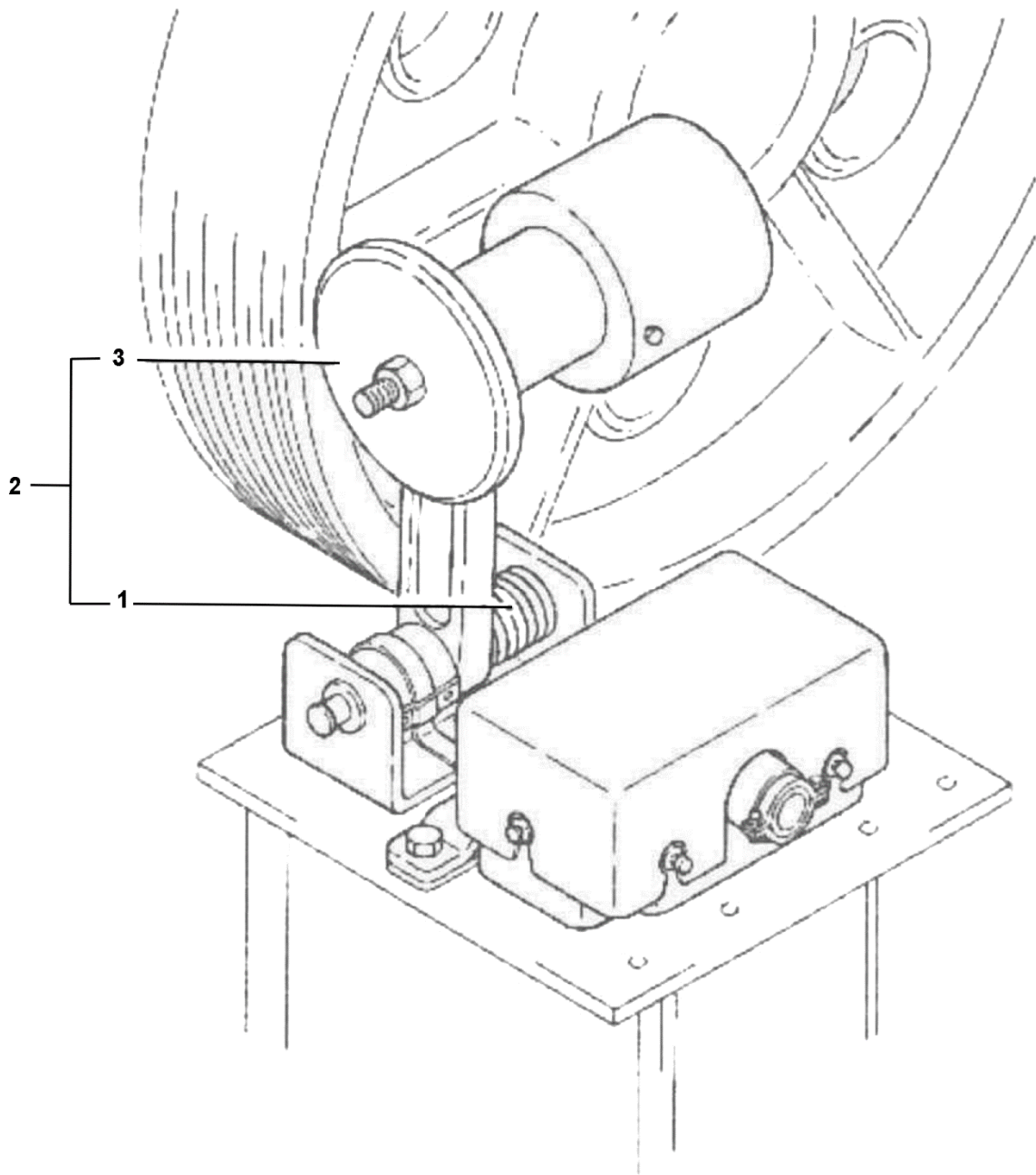
# Type 131HT Gearless Machine Driving Sheave

06-D6847J



Ref. No.	Description	Part No.	Quantity
1	Driving Sheave, Type JX260AJ	---	1
2	Key, Steel	192D37	1

# Type 131HT Gearless Machine Primary Velocity Transducer



Ref. No.	Description	Part No.	Quantity
1	Spring, Torsion	HT200985-1	1
2	Transducer, Primary Velocity	HT200750-1	1
3	Wheel, Friction	HT200983-1	1