

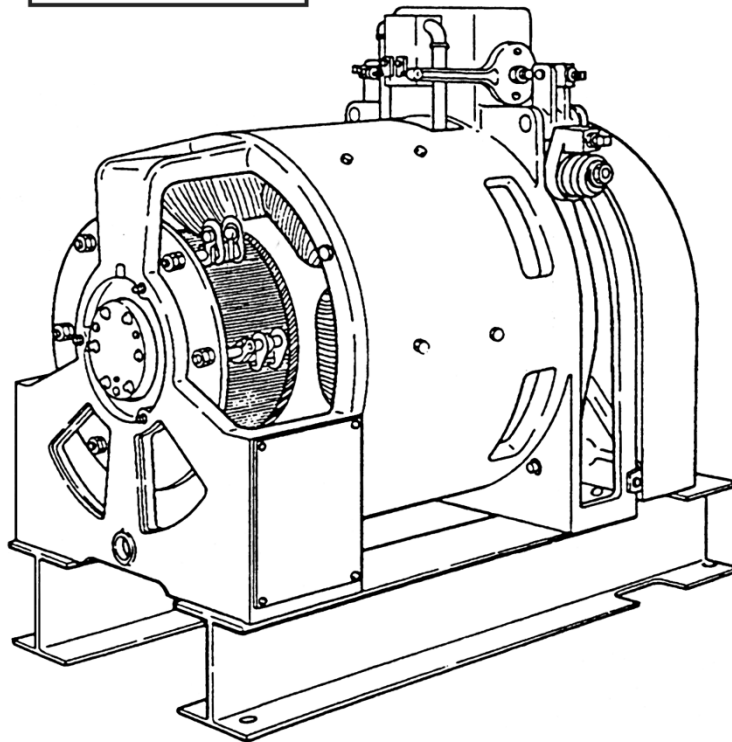
Machine, Gearless DC
131HT
(Yonkers, NY Manufacture)

Spare Parts Leaflet

06-F6847J

June 21, 2023 / Page 1 of 14

W/O
VINTAGE



OTIS

This document does not contain any
technical data subject to EAR or ITAR

SERVICE ENGINEERING
Otis Elevator Company
Bloomfield, Connecticut USA

Unpublished Work—© Otis Elevator Co.; 2023

06-F6847J

History

Leaflet Description

The 131HT is a DC gearless machine. A standard 131HT is arranged for 2:1 roping and single-wrap traction (SWT). This leaflet describes the lowest replaceable parts for all versions of the Yonkers, New York manufactured 131HT machine.

NOTE: The 131HT machine was sourced from multiple Otis facilities. Some replacement parts are unique to a machine's manufacturing source. Use the contract's 2020 Forms if available, or the vintage tag and/or the data nameplate as an aid to identify the machine source, and then use the appropriate SPL listed under *Related Documents* below.

Leaflet Revisions

Date Revised	Subject Matter Expert	Reason for Revision
July 1, 2003	Nicholas Grant	Update part numbers, improve illustrations, update leaflet to current SPL style
July 16, 2007	Val Sheynkman	Updated parts and illustrations
March 11, 2011	Val Sheynkman	Corrected part number spelling in ref. 1 on p. 10
January 23, 2013	Val Sheynkman	Updated Ref. 4–5 on p. 6
August 12, 2015	Val Sheynkman	Updated pp. 7 and 10
October 10, 2018	Gary Mendrala	P/N 2700ADE1 was replaced by p/n 7013J1
March 18, 2020	Gary Mendrala	Added p/n 177CA5 to p. 11
June 21, 2023	Gary Mendrala	Added new p/n AAA251BT8 on p. 10

Related Drawings

Drawing No.	Title	Drawing No.	Title
F6847J	Assembly, 131HT Machine	6913A	Assembly, Brake Switch

Related Documents

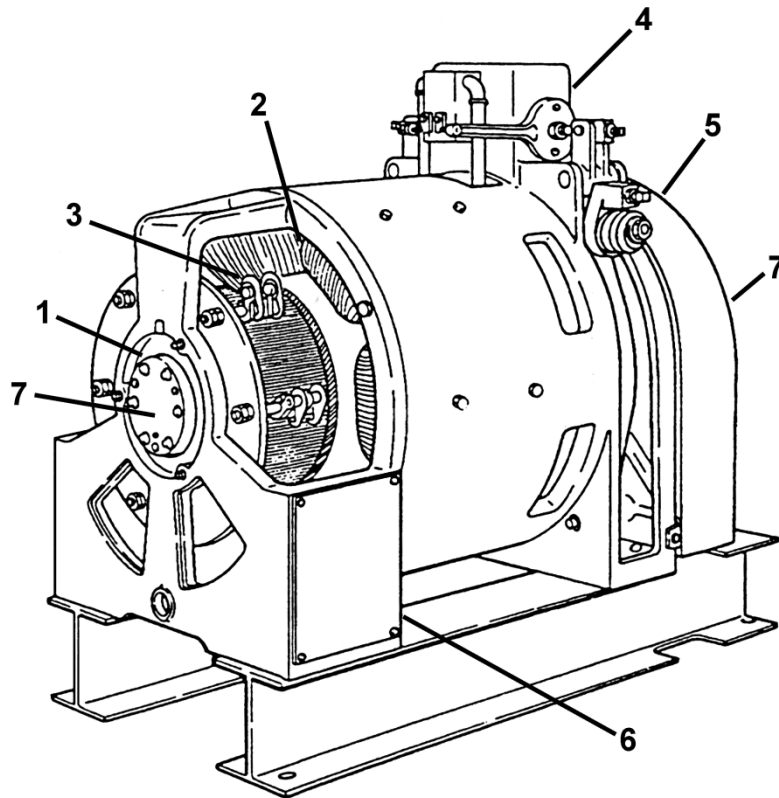
Document ID	Title
SPL 06-BLY6847J	131HT Gearless Machine (China Manufacture)
SPL JPN-3009 (AKA: 06-D6847J)	131HT Machine (Nippon Otis Manufacture)
SPL 06-LY6847J	131HT Machine (United Kingdom & Germany Manufacture)
SPL C-1008	Type 6931A Mechanical Switch
TIP 6.0-1	Replacement of Brake Linings
TIP 6.1.1-13	131HT/139HT/156MST Brake Levers
TIP 6.1.1-14	Installation Procedure for Sheave Guard (with Carpet Wiper)
TIP 6.1.0-19	Gearless Machine Commutator Guard Installation
TIP 6.0-16	Machine Brake Installation Kit

Subject Matter Expert

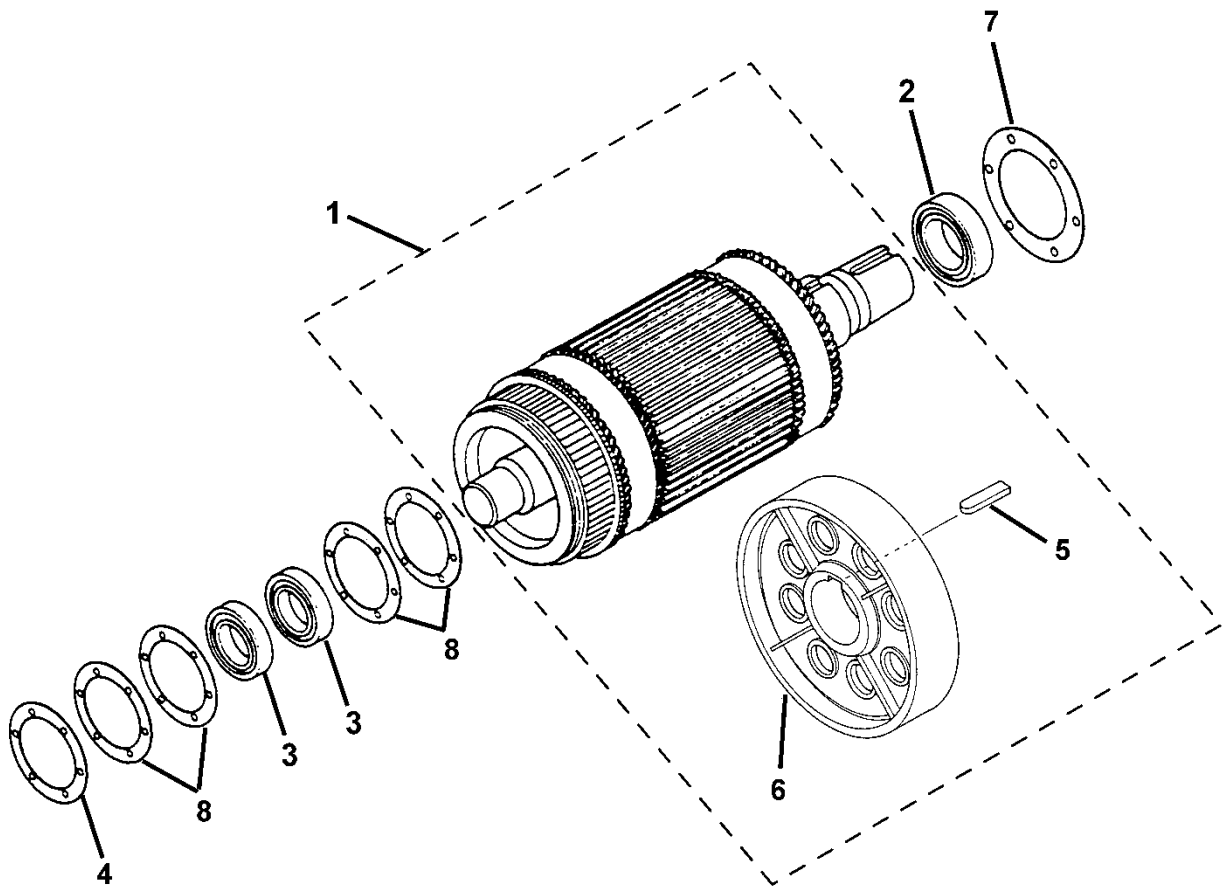
Name	Department
Gary Mendrala	OSC, Service Engineering

Table of Contents

06-F6847J



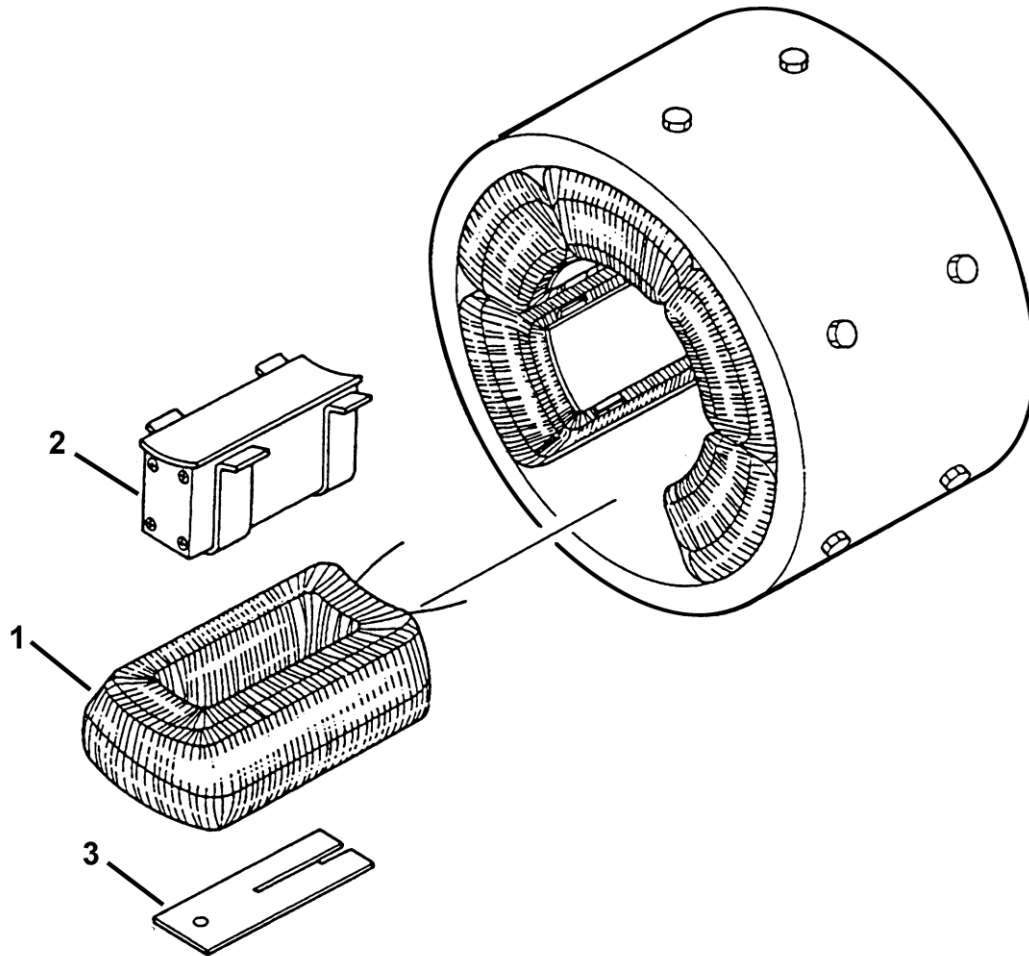
REF. No.	PAGE No.	DESCRIPTION
1	4	Armature Shaft Assembly
2	5	Motor Field Coils & Pole Pieces
3	6	Brush Holders & Brushes
4	7-9	Brake Parts
5	10	Drive Sheave
6	11	Blower Assembly
7	12	Encoders & Transducers (velocity devices)
---	13	Sound Isolation Pads
---	14	Sheave and Commutator End Guards

06-F6847J**131HT Machine Armature Assembly**

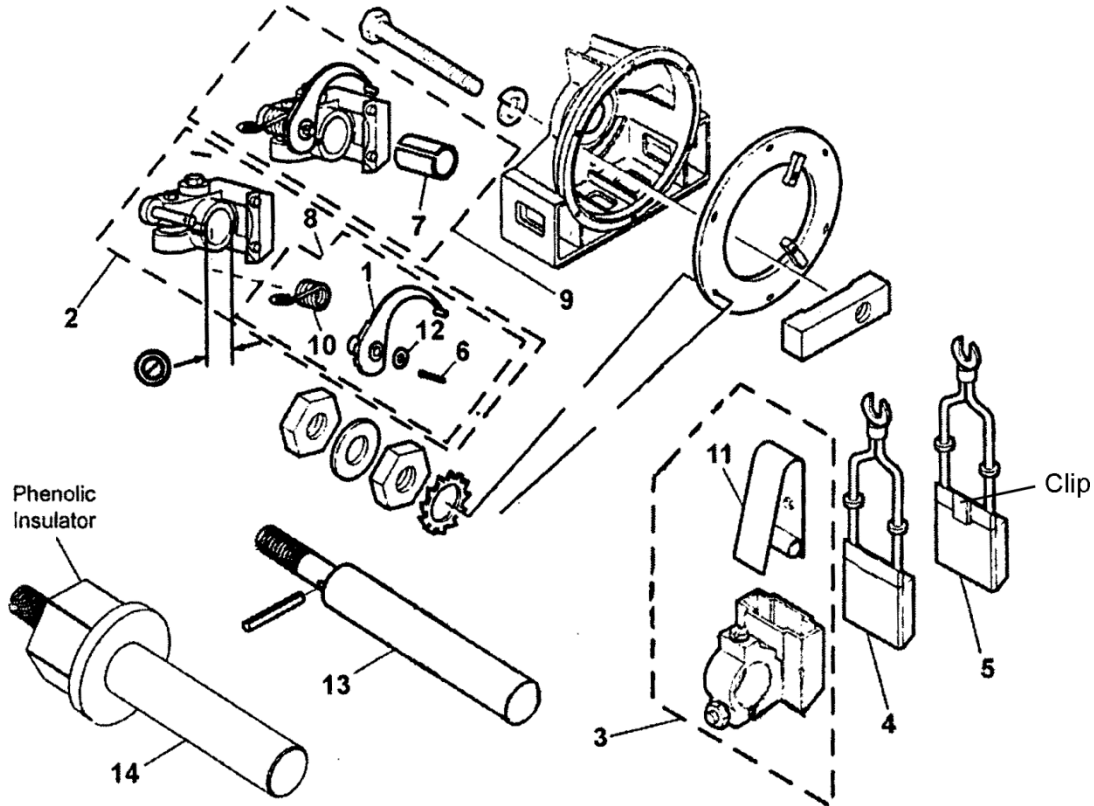
W/O VINTAGE		
REF. No.	PART No.	DESCRIPTION
1	2063E1	Assembly, Armature and Brake Pulley (contact Spare Lending)
2	209P1	Bearing, Roller, 10.6 in. \varnothing
3	209B21	Bearing, Roller, 4.9 in. \varnothing
4	AAA376FT1	Gasket, 7.25 in. \varnothing , 0.059 in. Thick
5	192G107	Key
6	498Y4 AAA198AAA1	Pulley, Brake, 21 in. \varnothing
7	255CG1	Shim, Plastic, Green, 13.0 in. \varnothing , 0.003 in. Thick
8	255BM3	Shim, Plastic, Green, 6-15/16 in. \varnothing , 0.003 in. Thick
	255BM4	Shim, Plastic, Blue, 6-15/16 in. \varnothing , 0.005 in. Thick

131HT Machine Field Coils

06-F6847J



	W/O VINTAGE	
REF. No.	PART No.	DESCRIPTION
1	221BD1	Coil, Field (set of 6)
2	355AJ1	Pole Piece
3	255BL5	Shim

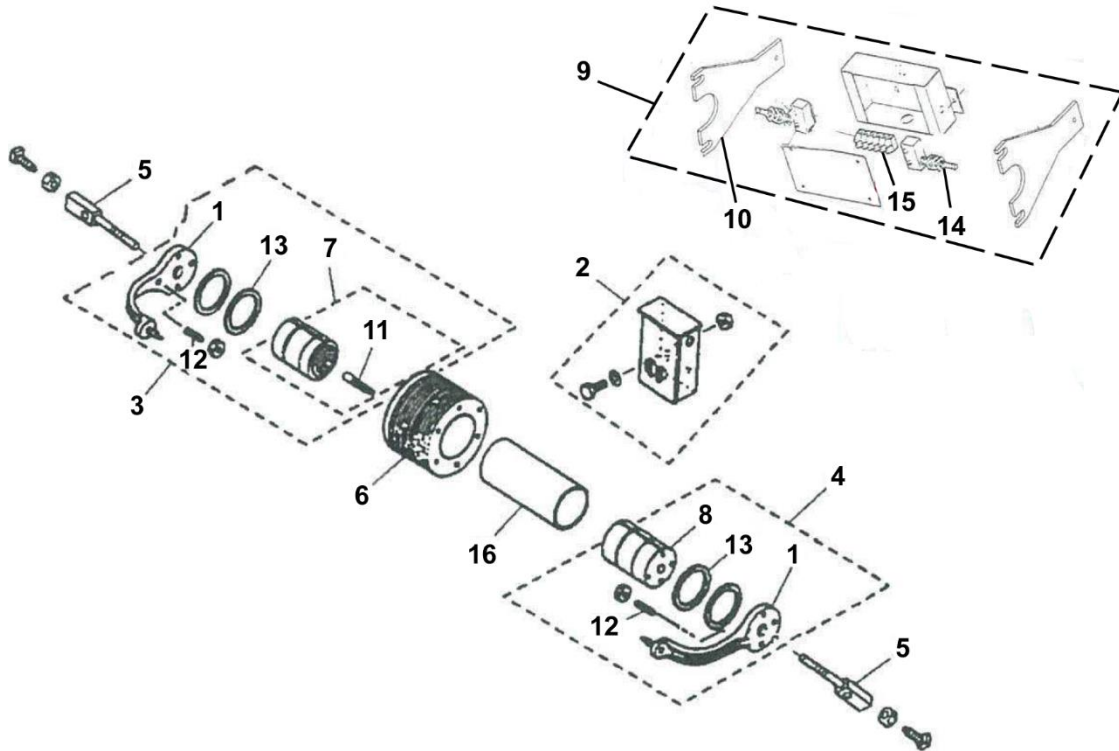



W/O VINTAGE

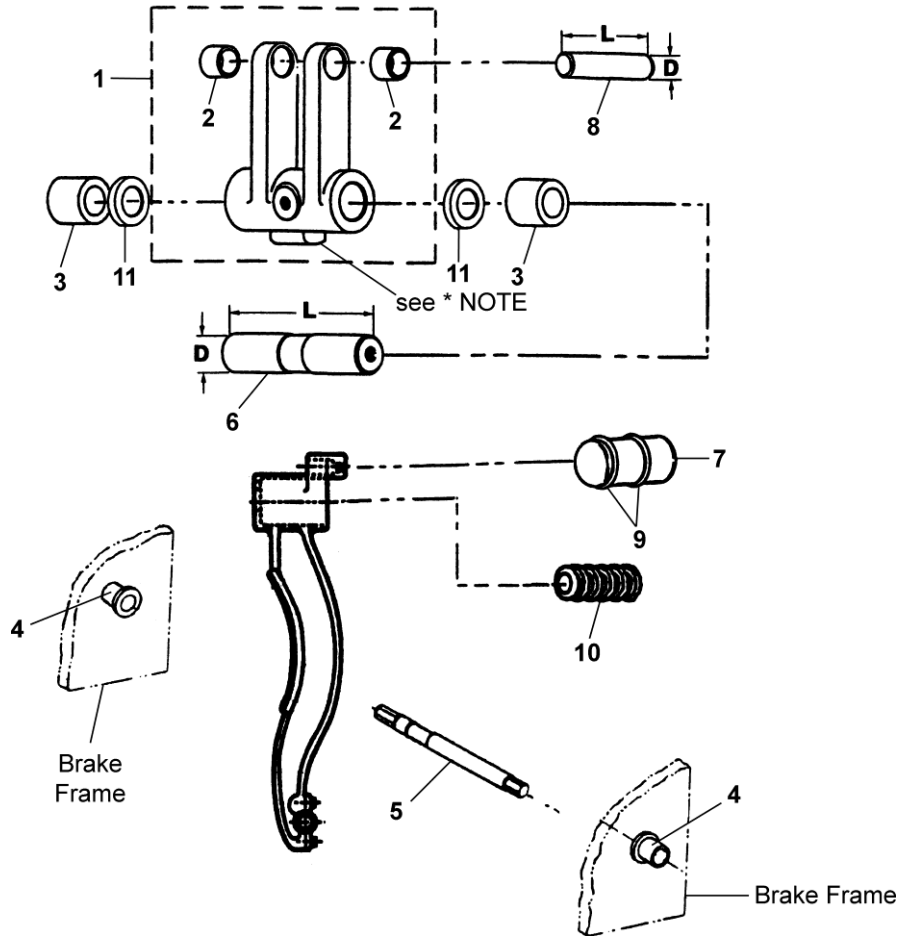
REF. No.	PART No.	DESCRIPTION
1	288CD4	Arm
2	6134B5	Brush Holder Assembly, ⌀ 0.875 in.
	6134B6	Brush Holder Assembly, ⌀ 0.902 in.
3	1-6134J4 6134J4	Brush Holder Assembly, ⌀ 0.902 in.
4	240P7	Brush, Shunt-Double, without Clip (W → Ref. 3)
5	240P3	Brush, Shunt-Double, with Clip (W → Ref. 2)
6	---	Cotter Pin, 1/16 x 1/2 in.
7	298DF129	Insulating Strip
8	LO5000E705	Kit, Arm + Spring + Washer + Cotter Pin
9	LO2000FA318	Kit, Brush Holder ⌀ 0.902 in. + Insulation Strip
10	92A4	Spring
11	93FC2	Spring
12	128AF12	Washer
13	474R1	Stem, Brush (post-1969, without molded insulator)
14	474H2	Stem, Brush (pre-1969, with phenolic molded insulator)

131HT Machine Brake Assembly- Brake Core Parts

06-F6847J



W/O VINTAGE		
REF. No.	PART No.	DESCRIPTION
1	287AZ2	Arm (brake switch actuator)
2	6931A1	Assembly, Brake Switch,  SPL C-1008
3	400DB3	Assembly, Magnet Core, Female with Pin
4	400DD3	Assembly, Magnet Core, Male
5	65GA3	Bolt
6	222JA15	Coil, Magnet
7	400DB4	Core, Magnet, Female with Pin
8	400DD4	Core, Magnet, Male
9	2700ADE1 7013J1	Kit, Microswitch Brake: Includes: Switch, Cover, Box, Levers, Terminal Block, Bushings, and Sundries.
10	288WE1	Lever
11	77RG2 AAA81MF2	Pin (brake core)
12	96R4	Rod
13	128AG53	Shim
14	177Y1	Switch
15	303G2	Terminal, Board
16	136R10	Tube (brake cores)

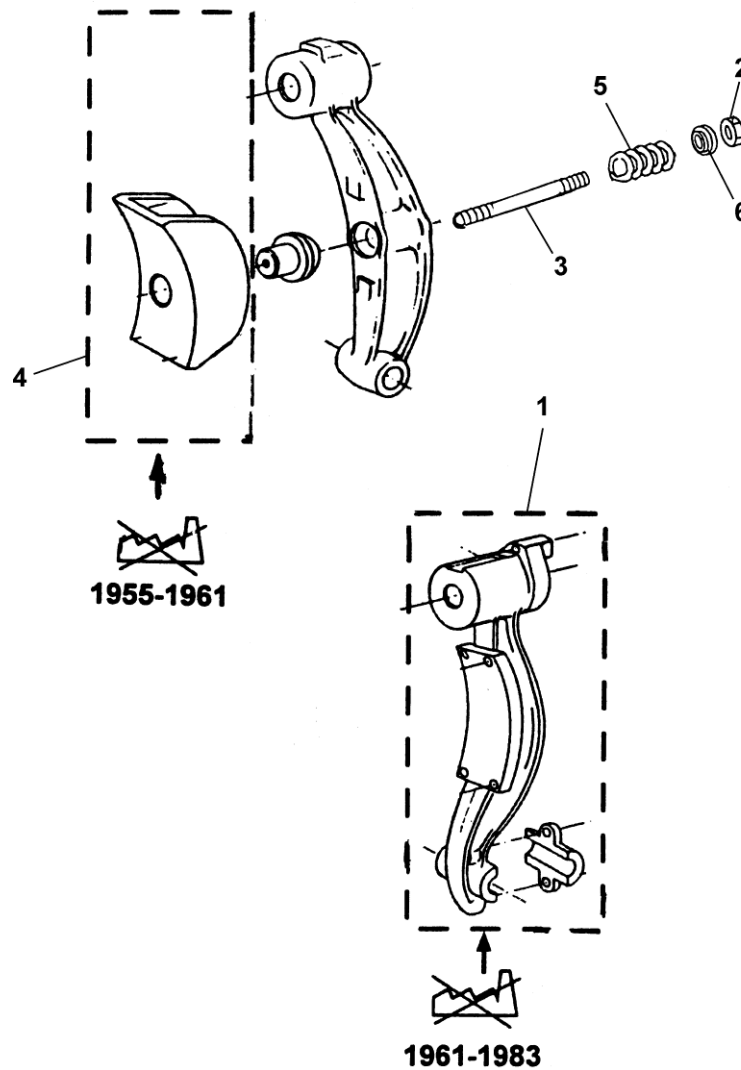
06-F6847J**131HT Machine Brake Assembly**

REF. No.	W/O VINTAGE PART No.	DESCRIPTION
1	B288HX2 *AAA288AAG4	Assembly, Lever
2	209A6	Bearing, \varnothing 1.250 in.
3	209A7	Bearing, \varnothing 1.500 in. (in brake frame at upper pivot)
4	335H14 335H43	Bushing (in brake frame at lower pivot)
5	77TL1	Pin, Eccentric
6	77LG3	Pin, L = 6.38 in., \varnothing D = 1.25 in.
7	81BN2	Pin (two O-Rings, ref. 9, are included)
8	82R4	Pin, L = 3.44 in., \varnothing D = 0.873 in.
9	172JK1	Ring, O, ID = 0.921 in., OD = 1.19 in.
10	90JD11	Spring
11	128AL2	Washer, Bronze

* **NOTE:** p/n AAA288AAG4 lever has the pressed-in heat treated load bearing plug.

06-F6847J

131HT Machine Brake Levers



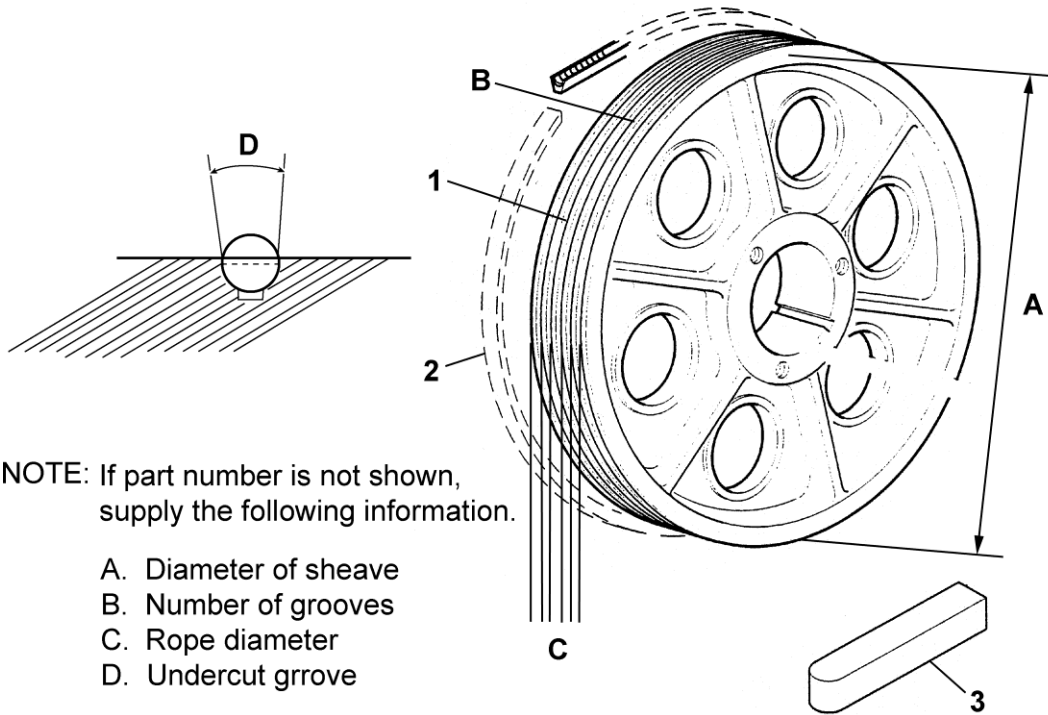
W/O VINTAGE		
REF. No.	PART No.	DESCRIPTION
1*	A286Y2	Arm, Brake
2	67G8	Nut
3	96H79	Rod
4*	415H2	Shoe, Brake
5	90BC4	Spring
6	133E4	Washer

* For details see TIP 6.0-1, *Replacement of Brake Linings*.

NOTE: All gearless machines must use brake arms or shoes that are lined with green gripper lining supplied factory-bonded by OSC to our offices. OSC makes every attempt to rework same brake arms and shoes.

06-F6847J

131HT Machine Drive Sheave



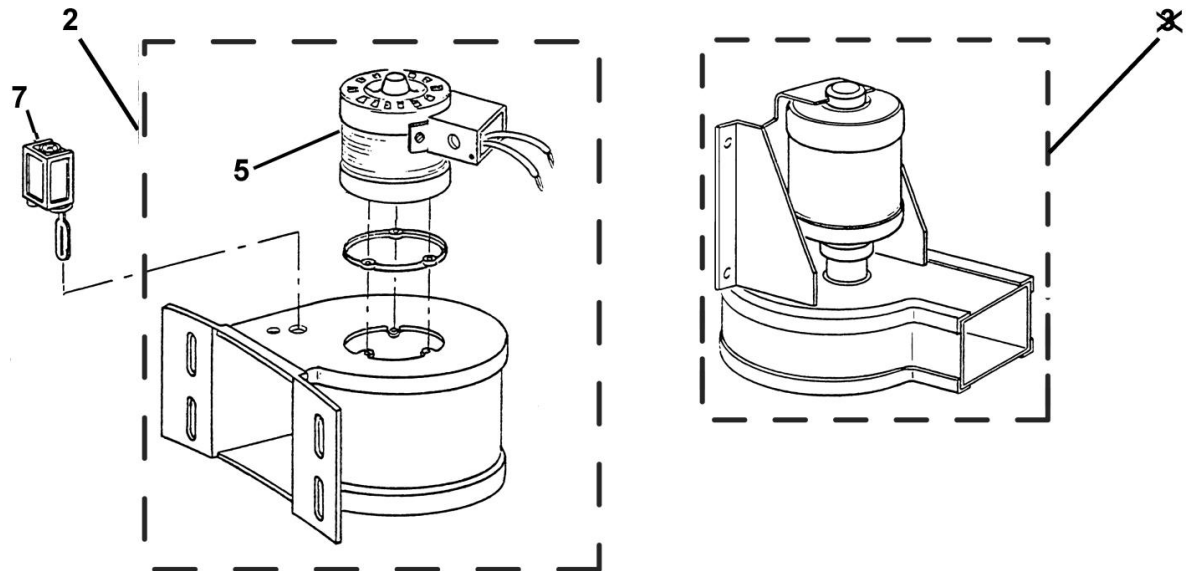
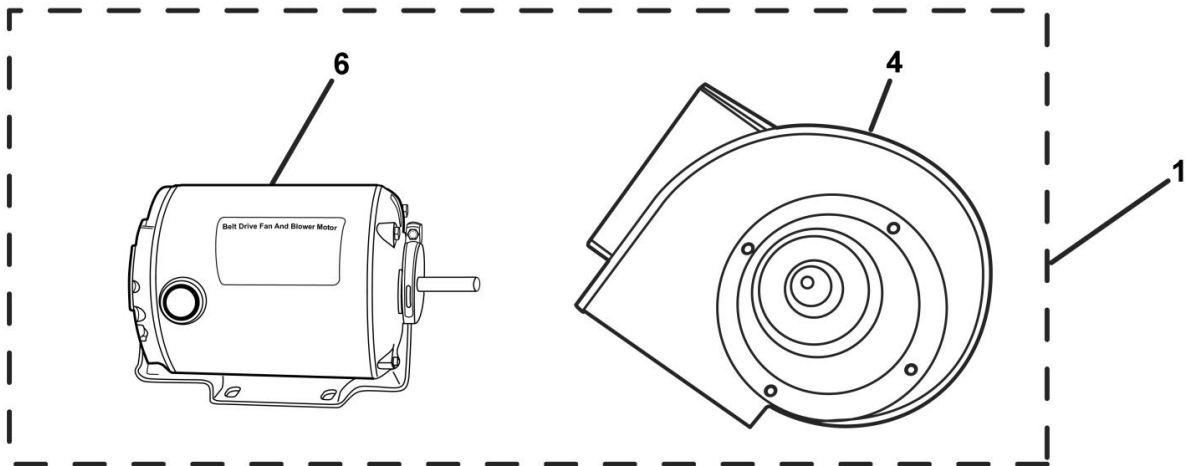
NOTE: If part number is not shown, supply the following information.

- A. Diameter of sheave
- B. Number of grooves
- C. Rope diameter
- D. Undercut groove

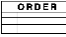
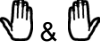

W/O VINTAGE					
REF. No.	PART No.	DESCRIPTION			
			No. of Grooves	Rope (in.)	Undercut Groove (degrees)
1	260BP1	Drive Sheave	4	0.5	---
	260BP4	A = 27 in. Grooved for 0.5 in. Rope Sheave Liners, ref. 2	5		---
	260AJ1	Drive Sheave A = 27 in. with Undercut Grooves	6		105
	260AJ2		5		90
	260AJ3		6		
	260AJ4		5		
2	254BT3 B254BT3 AAA254BT8 B254BT3 AAA254BT8	Insert, Polyurethane, 1/2 Rope Joined, 27 in. Sheave			
3	192D37	Key			

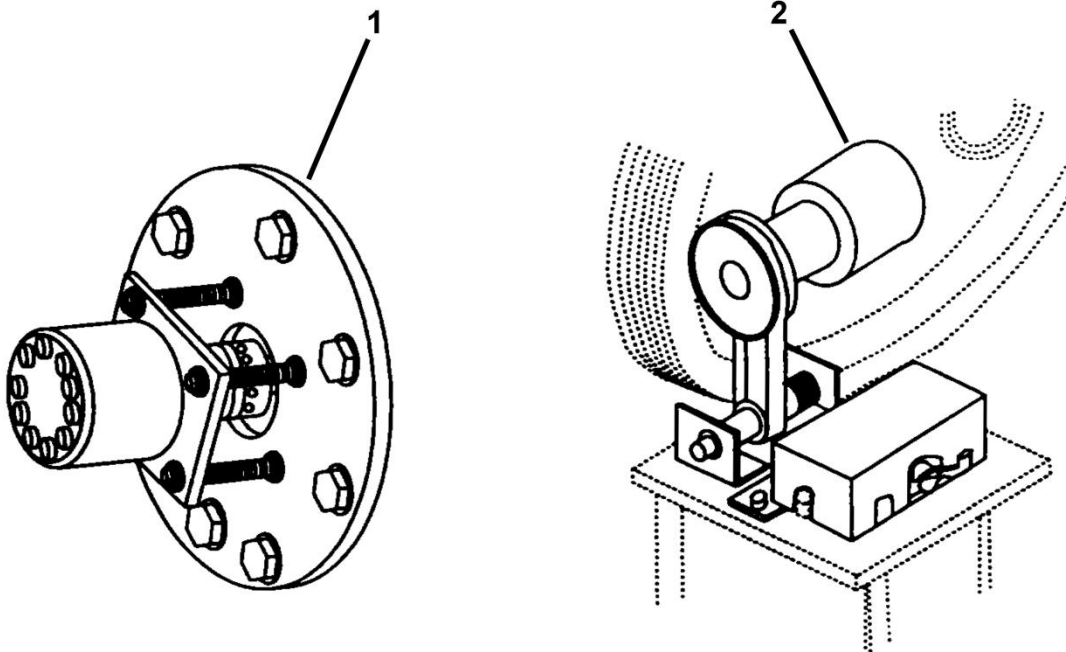
131HT Machine Blower Assembly



06-F6847J



W/O VINTAGE

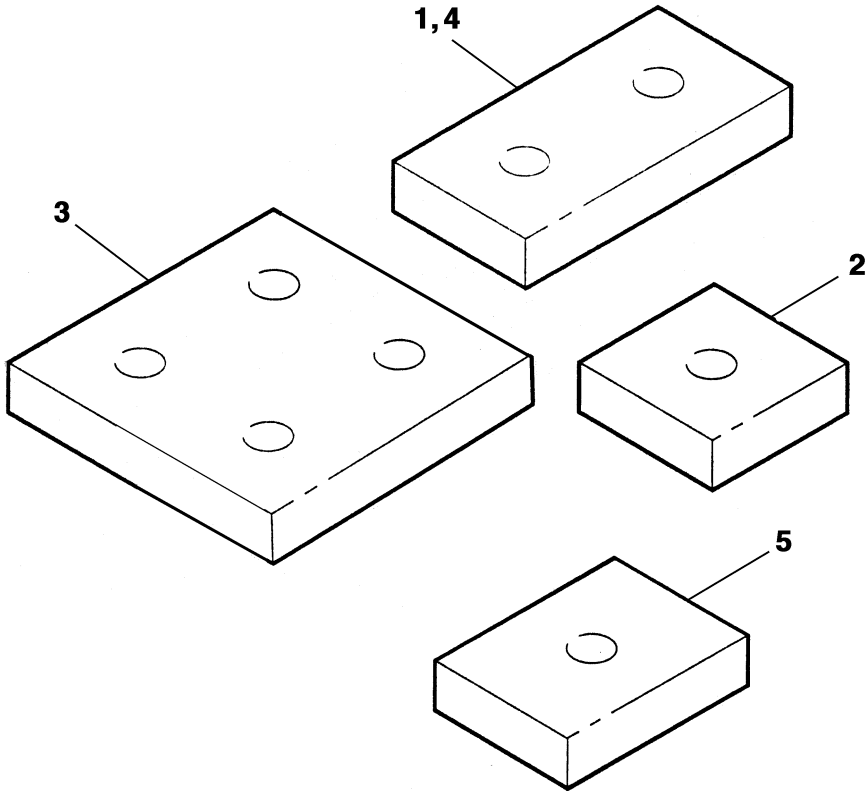
REF. No.	PART No.	DESCRIPTION	W/O VINTAGE	
			HZ	Machine Hand
1	2700ADD3	Assembly, Blower Kit	---	---
2	6091BA2	Blower	60	---
3	---	Blower, Type 6091H  Ref. 1	50 & 60	 & 
4	VP-708021	Blower, Cooling		
5	6333DH1	Motor, 1/6 H.P.		
6	VP-814821	Motor, 1/3 H.P.		
7	177CA3 177CA5	Switch, Air Flow		



W/O VINTAGE		
REF. No.	PART No.	DESCRIPTION
1	---	Encoder, Shaft,  SPL 06-7119AB
2	---	Transducer, Primary Velocity,  SPL 06-HT200750-1

131HT Machine Sound Isolation Pads

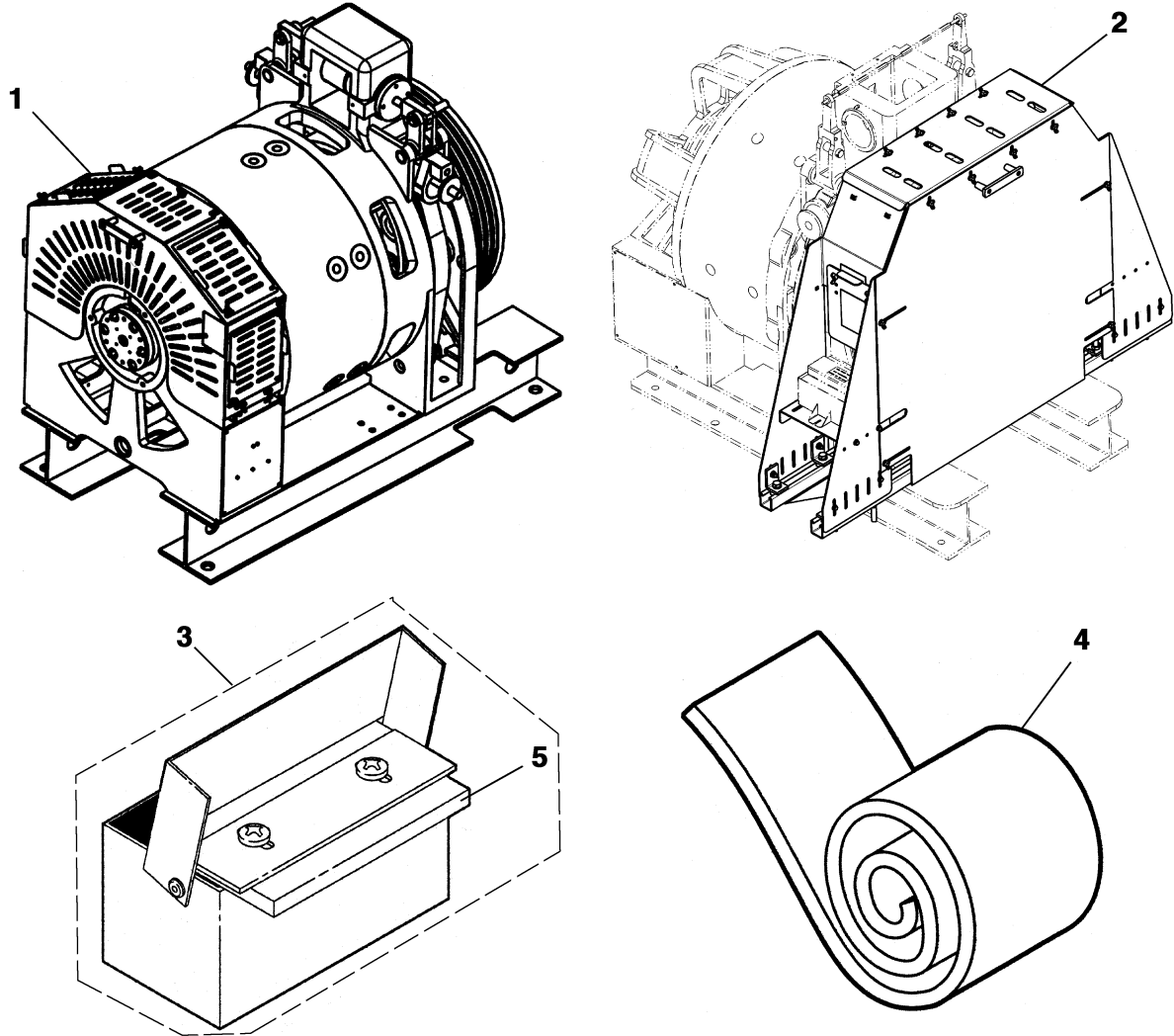
06-F6847J





	W/O VINTAGE	
REF. No.	PART No.	DESCRIPTION
1	310BE2	Pad, Rubber, 6 x 3 w/Two Holes, Hole $\varnothing = 1$ in.
2	310BE3	Pad, Rubber, 3 x 3 w/One Hole, Hole $\varnothing = 1$ in.
3	310BE1	Pad, Rubber, 6 x 6, w/Four Holes, Hole $\varnothing = 1$ in.
4	310JJ1	Pad, Polyurethane, 6 x 3, w/Two Holes, Hole $\varnothing = 1$ in.
5	310JJ3	Pad, Polyurethane, 6 x 3, w/One Hole, Hole $\varnothing = 1$ in.

06-F6847J

**Sheave and Commutator End Guards
for 131HT Machine**



W/O VINTAGE		
REF. No.	PART No.	DESCRIPTION
1	---	Guard, Commutator End,  TIP 6.1.0-19
2	---	Guard, Sheave,  TIP 6.1.1-14
3	AAA508AH3	Lubricator
4	AAA297AY4	Strip, Carpet
5	AAA488M5	Wick, Felt