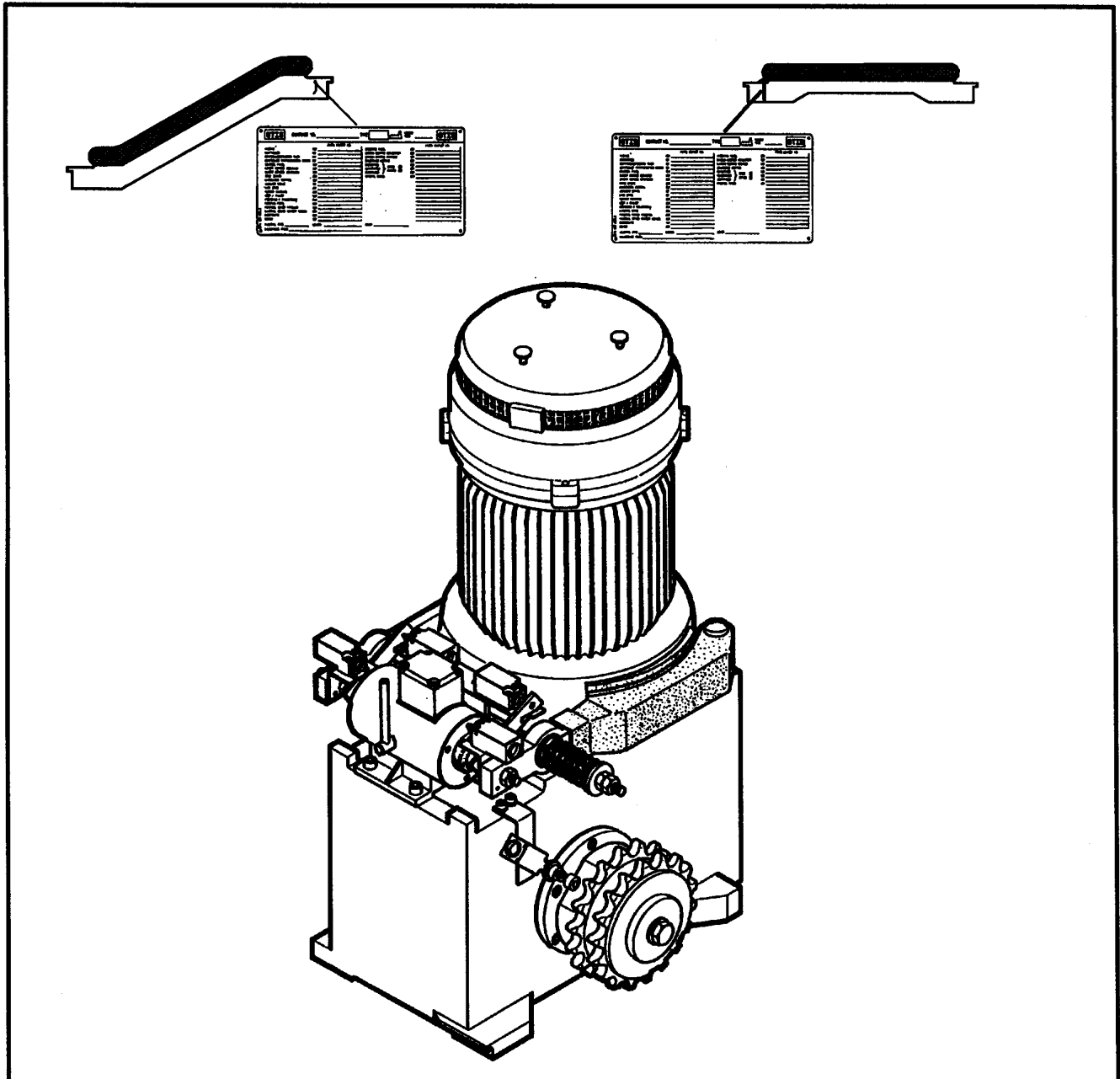


MACHINE ESCALATOR / MACHINE TRAV-O-LATOR CHAIN DRIVE EC 143

* 06-G..20401A



Revision-History:			
Rev Date: 2009-06-16	Revised By: Ercan, A.	Approved By: Ercan, A.	(Signature and Date) Ercan, Abdullah / 2009-06-17
Description of Change	Document update by changing ref no.5 on page 5		
Reason for Change	Supplier is delivering brake levers in one piece rather than set. It has been changed from one set to one piece.		

OTIS

TYPE TAG GEARBOX
PLAQUE DE CARACTERISTIQUES L'ENGRENAGE
GETRIEBETYPENSCHILD
ALTAIRGA DATI DELL'INGRANAGGIO
CHAPA DE CARACTERISTICAS DEL ENGRANAJE

OMS NO GEARBOX
OMS NO L'ENGRENAGE
OMS NR GETRIEBE
OMS NO DELL'INGRANAGGIO
OMS NO DEL ENGRANAJE

DELIVERY DATE
DATE DE LIVRAISON
LIEFERDATUM
DATI DE CO
FECHA DE

See SPL 06/OMS-KIT

Date: July 2007

CONTRACT NUMBER
NOMBRE DE COMMANDE
AUFTRAGSNUMMER
NUMERO DI CONTRAT
NUMERO DE CONTRATO

TYPE OF GEAR
TYPE DE L'ENGRENAGE
GETRIEBETYP
TIPPI DELL'INGRANAGGIO
TIPOS DE ENGRANAJE

GEAR RATIO
RAPPORT DE REDUCTION
GETRIEBEÜBERSETZUNG
RAPPORTO DI RIDUZIONE
RELACION DE DESMULTI-
PLICACION DEL ENGRANAJE



OMS NO	
DELIV-D	
UNIT NO	
TYPE	
RATIO	

GAA 20401 A

F.NO.

PART OR M.L.

DESCRIPTION

TYPE TAG MOTOR
PLAQUE DE CARACTERISTIQUES MOTOR
MOTORTYPENSCHILD
TARGA DATI DI MOTORE
CHARACTERISTICAS DE MOTOR

OMS NO MOTOR
OMS NO MOTEUR
OMS NR MOTOR
OMS NO MOTORE
OMS NO MOTOR



DELIVERY DATE
DATE DE LIVRAISON
LIEFERDATUM
DATI DE CO
FECHA DE

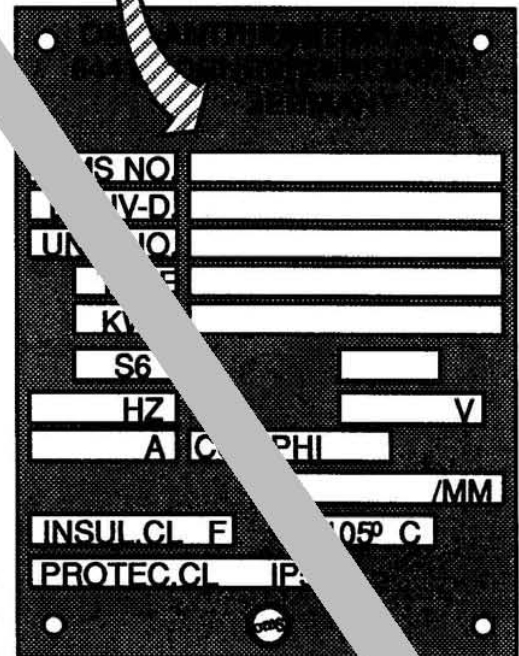
See SPL 06/OMS-KIT

Date: July 2007

CONTRACT NUMBER
NOMBRE DE COMMANDE
AUFTRAGSNUMMER
NUMERO DI CONTRATTO
NUMERO DE CONTRATO

TYPE OF MOTOR
TYPE DE MOTEUR
MOTORTYPEN
TIPI DI MOTORE
TIPOS DE MOTOR

kW _____
V _____

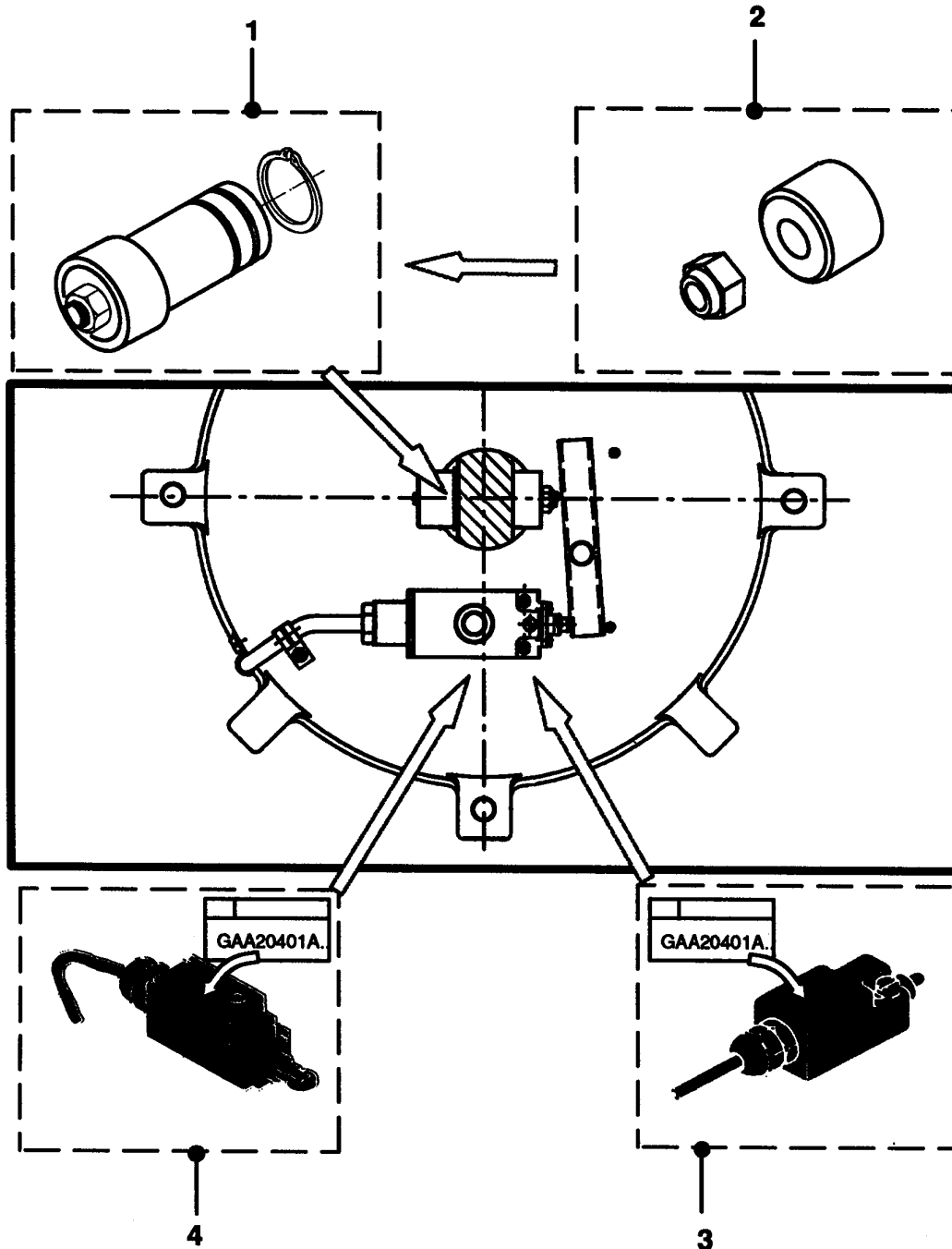


GAA 20401 A

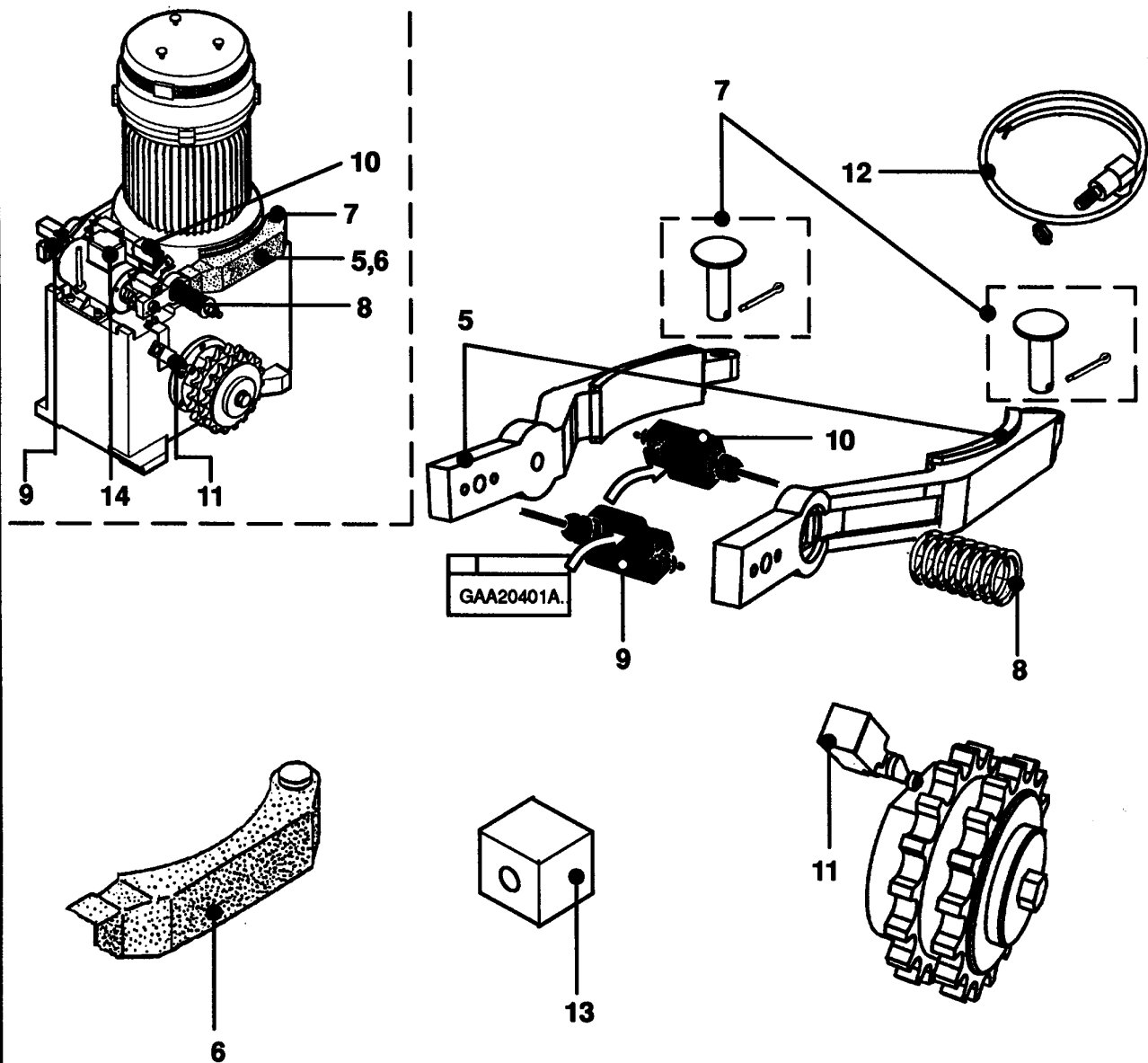
F.NO.

PART OR M.L.

DESCRIPTION

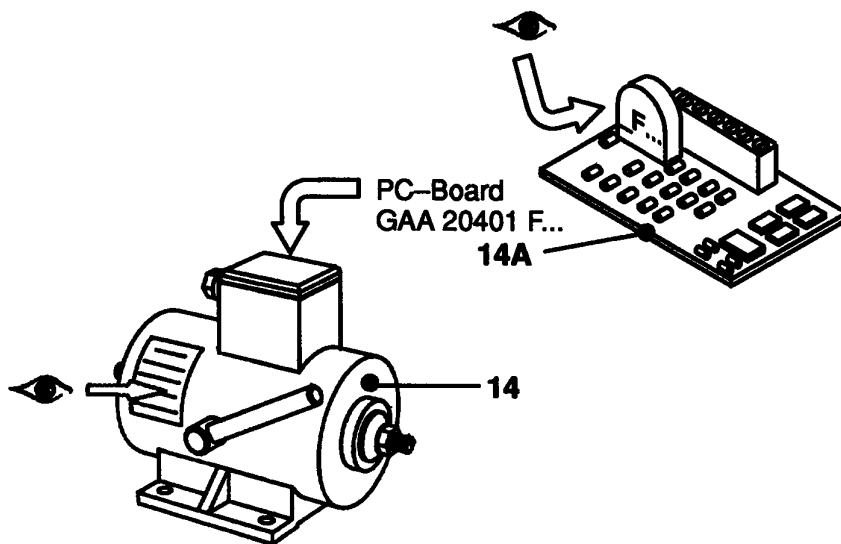


GAA 20401 A		
REF.NO.	PART OR M.L.	DESCRIPTION
1	GAA 20401 A 500 *	Overspeed Governor 50 Hz
	GAA 20401 A 501 *	Overspeed Governor 60 Hz
2	GO 2000 BG 1	Test set for Overspeed Governor
3	GAA 20401 A 505 *	Overspeed Governor Switch (from 06-90)
4	GAA 20401 A 503 *	Overspeed Governor Switch (until 06-90)

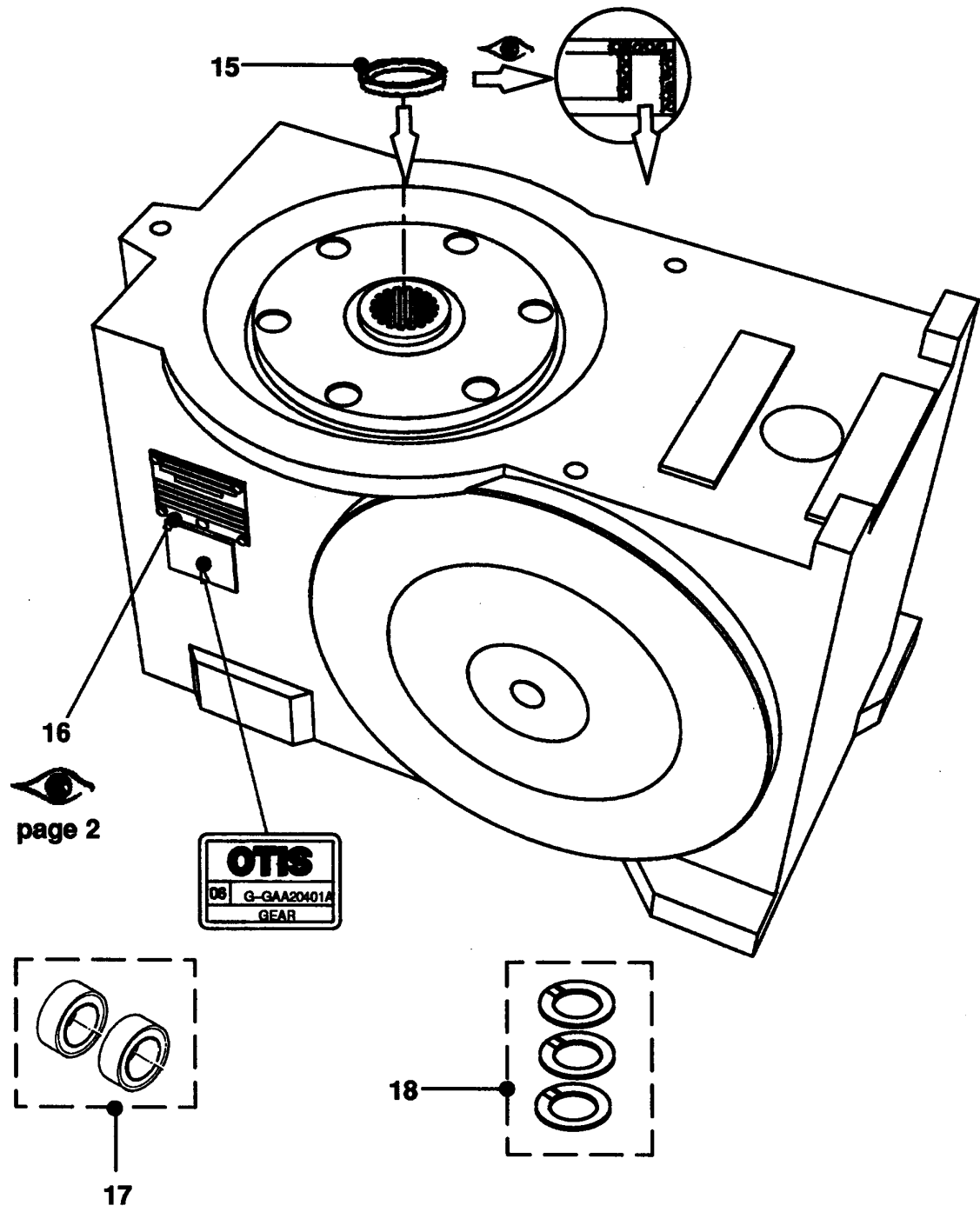


GAA 20401 A

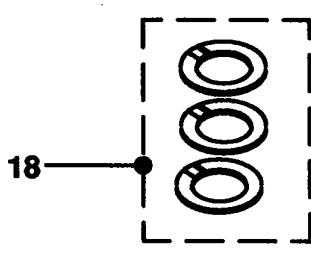
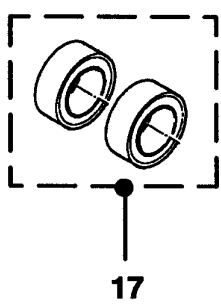
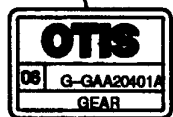
REF.NO.	PART OR M.L.	DESCRIPTION
5	GAA 20401 A 506 *	Brake Lever (one piece)
6	GAA 20401 A 545	Brake Lever Cover
7	GAA 20401 A 507	Set : Pin & Cotter pin
8	GAA 20401 A 508	Spring
9	GAA 20401 A 510	Brake Lining Wear Switch
	GAA 20401 B 512 ↻	
10	GAA 20401 A 512	Brake Function Switch
	GAA 20401 B 512 ↻	
11	GAA 20401 A 513 ↻ GAB 20401 A 513	Friction Reversing Switch (for breaking distance emergency device ,NRD)
	GAC 20401 A 513 ↻	
12	GAA 20401 A 515	Impuls Generator M 12 x 1
13	GOA 309 D 1	Junction Box for Impulse Generator



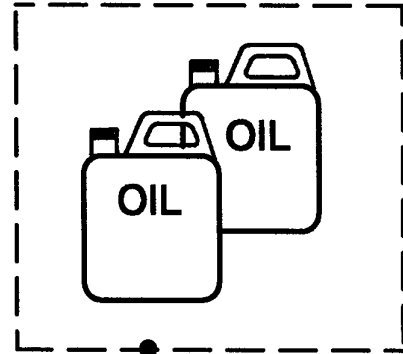
GAA 20401 A		
REF.NO.	PART OR M.L.	DESCRIPTION
14	GAA 20401 A 550	Brake Solenoid GO 222P1 / M1 230V
	GAA 20401 F 550 *	Brake Solenoid 230 V O-20W
14A	GAA 20401 F 580	PC - Board for GAA 20401 F 550
14	GAA 20401 A 551	Brake Solenoid GO 222P2 / M2 230V
	GAA 20401 F 551 *	Brake Solenoid 230 V O-21W
14A	GAA 20401 F 581	PC - Board for GAA 20401 F 551
14	GAA 20401 A 552	Brake Solenoid GO 222P5 / M3 230V
	GAA 20401 F 552 *	Brake Solenoid 230 V O-22W (Dual circuit brake system)
14A	GAA 20401 F 582	PC - Board for GAA 20401 F 552
14	GAA 20401 A 553	Brake Solenoid GO 222P10 120V
	GAA 20401 F 562 *	Brake Solenoid 120 V O-10CW
14A	GAA 20401 F 584	PC - Board for GAA 20401 F 562
14	GAA 20401 A 554	Brake Solenoid GO 222P11 230V
	GAA 20401 F 554 *	Brake Solenoid 230 V O-20CW
14A	GAA 20401 F 580	PC - Board for GAA 20401 F 554



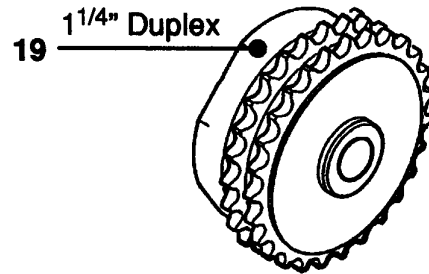
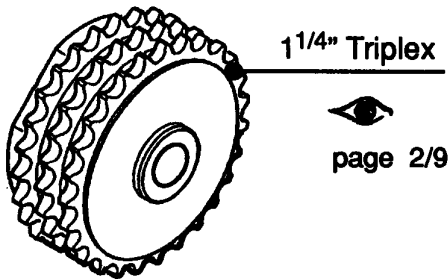
16
 eye icon
 page 2



GAA 20401 A		
REF.NO.	PART OR M.L.	DESCRIPTION
15	GAA 20401 A 517	Worm Shaft Seal
16	GAA 20401 A 518 + GAA 20401 A ...	Gearbox complete $i = 26,6 : 1$ + Sprocket PAGE 7/9
	GAA 20401 A 519 + GAA 20401 A ...	Gearbox complete $i = 20,0 : 1$ + Sprocket PAGE 7/9
17	GAA 20401 A 522	Set of Bearings for Worm Shaft
18	GAA 20401 A 523	Set of Shims for axial Backlash adjusting

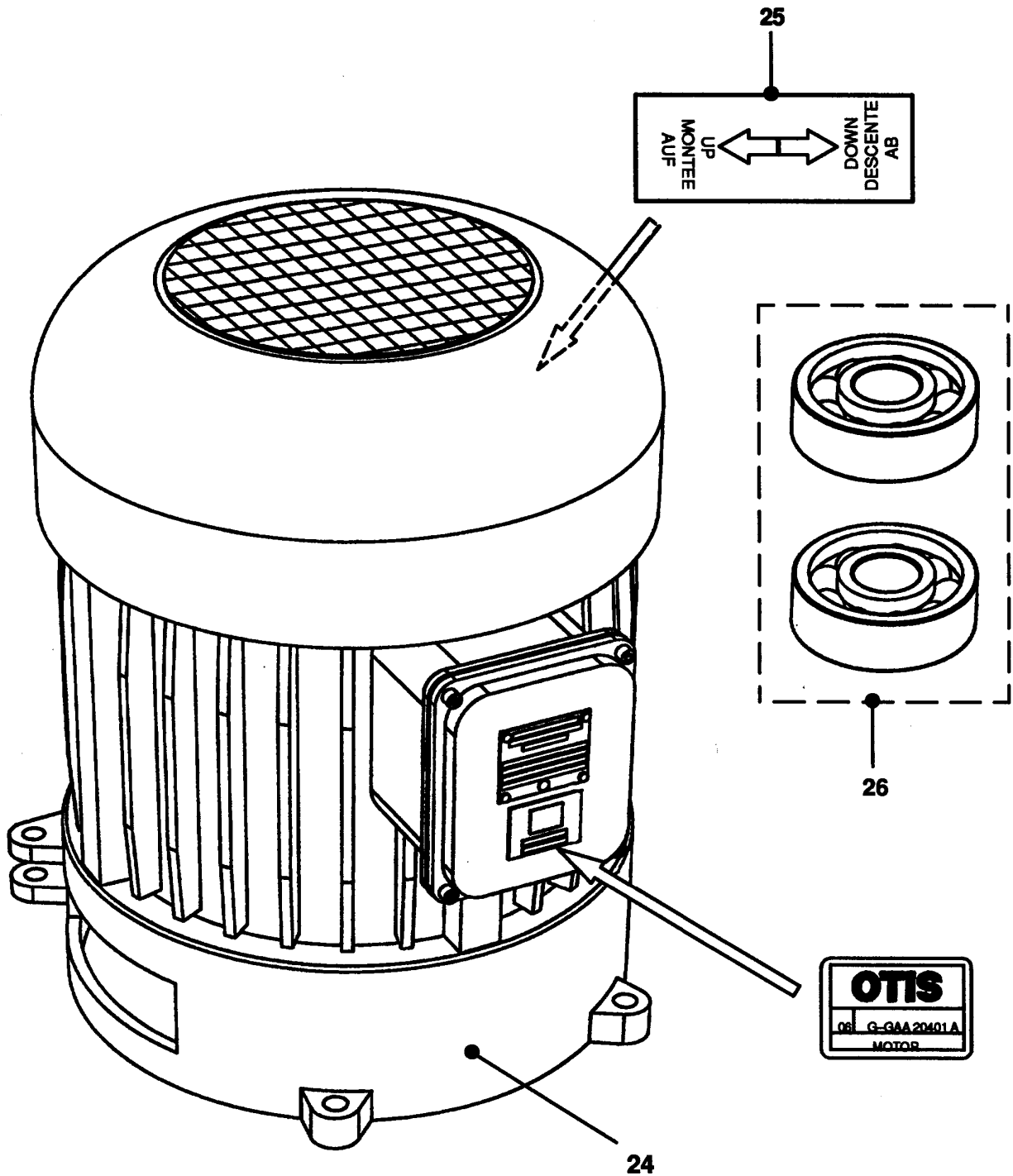



20 See Nota

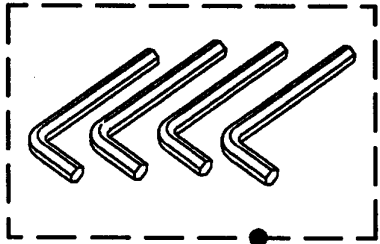


Nota: for oil GAA20401A534, order GAA20401A534-2L & GAA20401A534-500ML

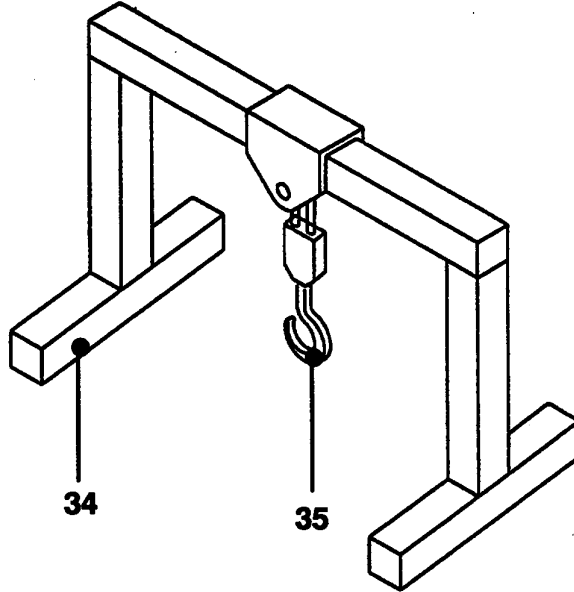
GAA 20401 A										
Ref.N°	PART OR M.L.	NO. of TEETH								
	Chain 1 1/4" Duplex	17	18	19	20	21	22	23	24	
19	GAA 20401 A...	...526	...527	...528	...529	...530	...531	...532	...533	
20	GAA 20401 A 534	Oil , 2 x 5 l Synthetic oil : Klüber Syntheso HT 150 (FO16)								
21	GAA 20401 A 540	Repair kit:coupling package								
22	GAA 20401 A 541	Backlash shim package Gear								
23	GAA 20401 A 542	Special tools for Worm Shaft adjustment								



GAA 20401 A		
Ref.N°	PART OR M.L.	
24		Motor unit complete  page 3
25	GO 102 RD 1	Direction Tag
26	GAA 20401 A 524	Set of Bearings for Motor Size up to 7.5 kW
	GAA 20401 A 525	Set of Bearings for Motor Size over 7,5 kW



31



34

35



28



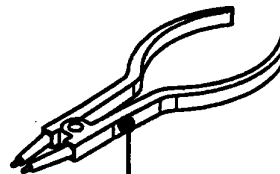
27



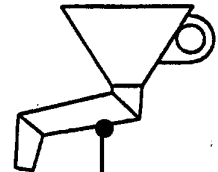
29



30



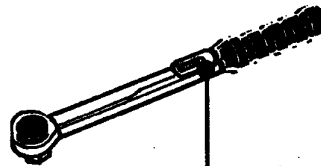
33



36



37



32

GAA 20401 A

REF.NO.	PART OR M.L.	DESCRIPTION
27	GAA 20401 B 764	Mounting paste
28	GAA 20401 B 766	Screw retaining paste
29	GAA 20401 B 768	Grease for V-Seal-Ring
30	GAA 20401 B 769	Sealing compound
31	GAA 20401 B 770	Set of allen key
32	GAA 20401 B 771	torque wrench 50-200 Nm
33	GAA 20401 B 772	Retaining ring plier
34	GAA 20401 B 773	Assembly stand
35	GAA 20401 B 774	Lifting device
36	GAA 20401 B 775	Funnel tube
37	—————	Oil level indicator (10101309050)