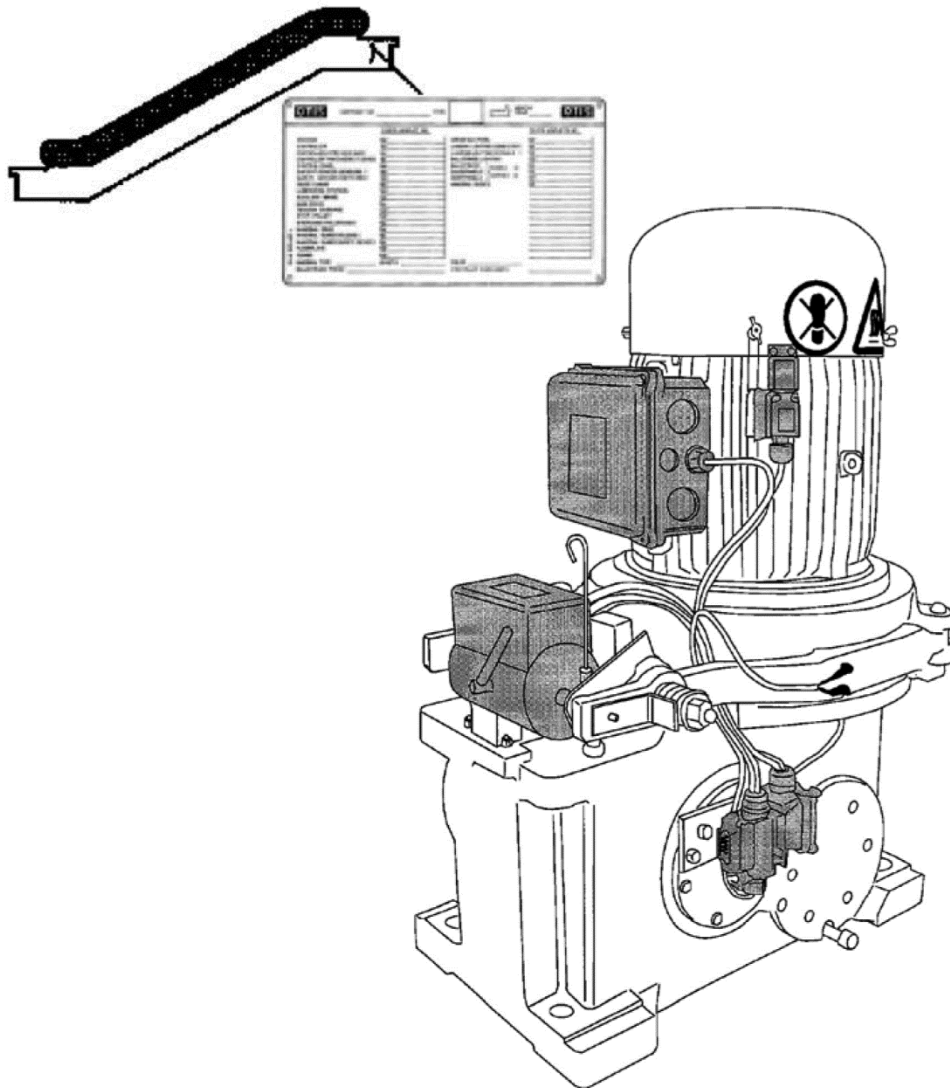


# Escalator Machine EC-H2

**Spare Parts Leaflet**

**06-GAA20401F**

03/14/2005 / Page 1 of 20



# OTIS

**ESCALATOR ENGINEERING**  
Otis Elevator Company  
PDC HANGZHOU

**Leaflet Description**

Escalator Machine EC-H2

**Leaflet Revisions**

| <b>Date Revised</b> | <b>Subject Matter Expert</b> | <b>Reason for Revision</b>   |
|---------------------|------------------------------|--|
| June 30, 2005       | Yang Wenhai                  | New SPL  |
| March 27, 2014      | Yangjianye Jesse             | Page 18, add motor fan and repair kit  |
| May 22, 2014        | Henry Zhu                    | Add motor blocking (safety) device in page 19 and add page 20 for 7.5kW motors |

**Related Drawings**

| <b>Drawing No.</b> | <b>Title</b> | <b>Drawing No.</b> | <b>Title</b> |
|--------------------|--------------|--------------------|--------------|
|                    |              |                    |              |
|                    |              |                    |              |

**Related Documents**

| <b>Document ID</b> | <b>Title</b> |
|--------------------|--------------|
|                    |              |
|                    |              |

**Subject Matter Expert**

| <b>Name</b> | <b>Department</b>              |
|-------------|--------------------------------|
| Yang Wenhai | Hangzhou Escalator Engineering |

**About Spare Parts Leaflets...**

This document lists the lowest replaceable units (LRUs) for the standard version of the product. The LRUs are chosen by a team of Otis associates representing engineering and manufacturing.

While goal of this document is to make parts identification as easy as possible, the document cannot be all-inclusive. Elevator and escalator contracts classified as "special" or "custom" are not addressed here. For such contracts, please refer to specified information, the contract folder, TIPs, Field Education Articles, Construction Letters, etc. for further information.

If you have any suggestions about this document, please contact the subject matter expert listed on this page.

## Type tag Gear box

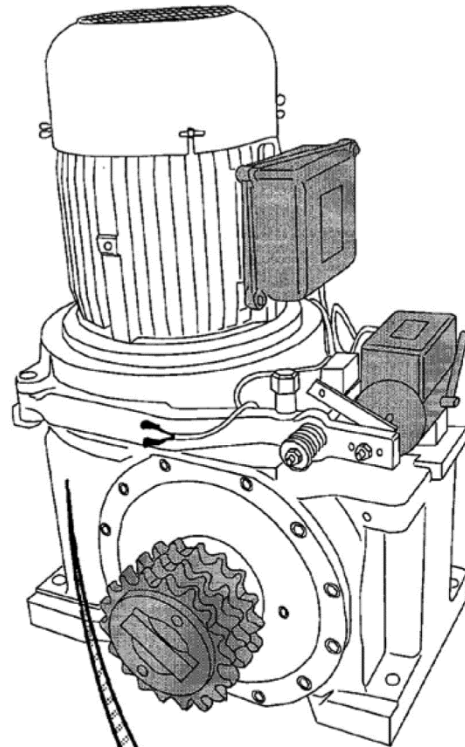
OMS no. gear

Delivery date

contract no.

type of gear

gear ratio



|   |  |
|---|--|
| MS-ANTRIEBSTECHNIK<br>FRANKENBERG/HESSEN<br>GERMANY |  |
| OMS NO  |  |
| DELIV-D   |  |
| UNIT NO   |  |
| TYPE  |  |
| RATIO   |  |

Type tag Motor

OMS no. gear \_\_\_\_\_

Delivery date \_\_\_\_\_

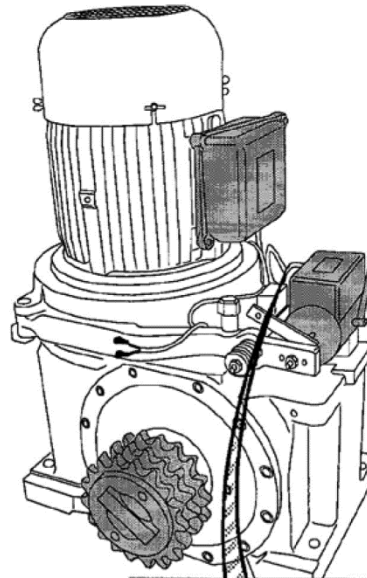
contract no. \_\_\_\_\_


type of motor \_\_\_\_\_

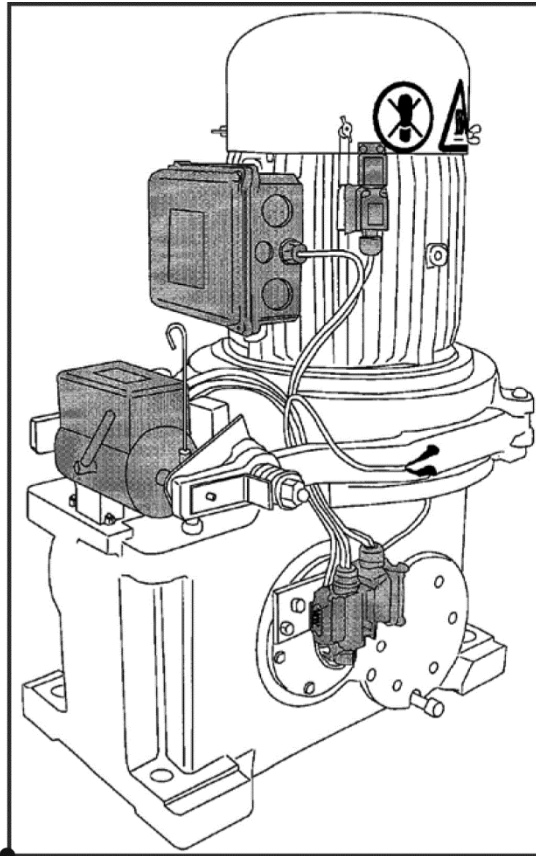
KW \_\_\_\_\_

V \_\_\_\_\_

Hz \_\_\_\_\_

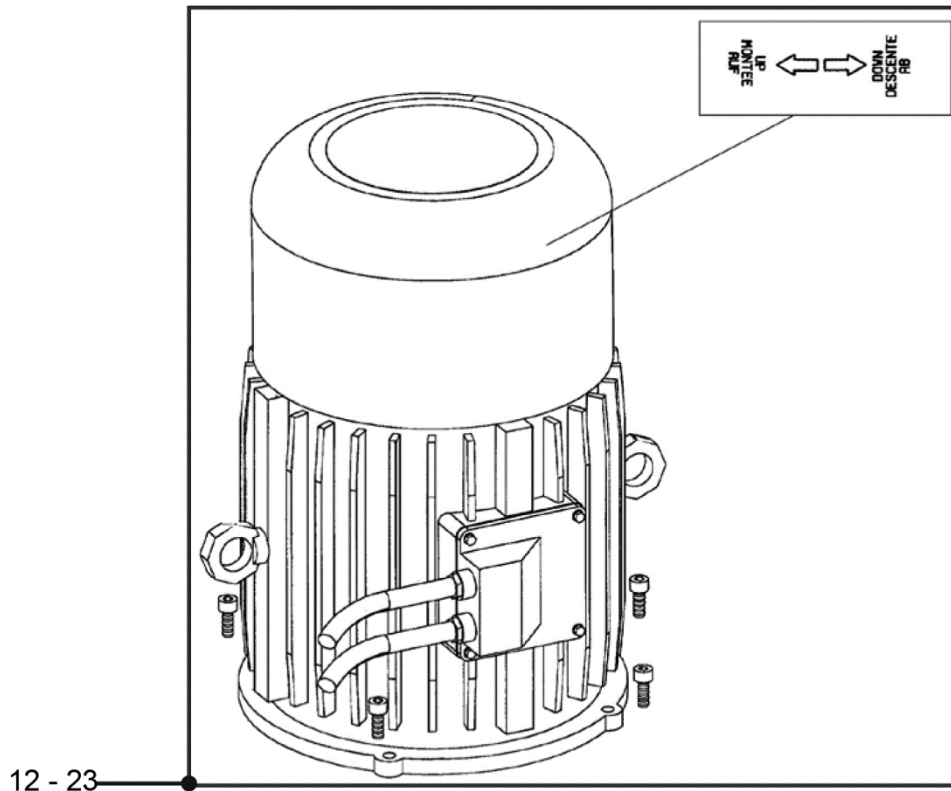


|   |               |
|---|---------------|
| ○ OMS ANTRIEBSTECHNIK ○   |               |
| 6441 KORNBERG/HESSEN  |               |
| GERMANY   |               |
| OMS NO  | _____         |
| DELIV-D   | _____         |
| UNIT NO   | _____         |
| TYPE  | _____         |
| KW  | _____         |
| S6  | _____         |
| _____ HZ  | _____ V       |
| _____ A   | COS PHI _____ |
| _____   | _____ /MM     |
| INSUL CL F  | 105° C        |
| PROTEC. CL  | IP55          |
| ○  ○ |               |

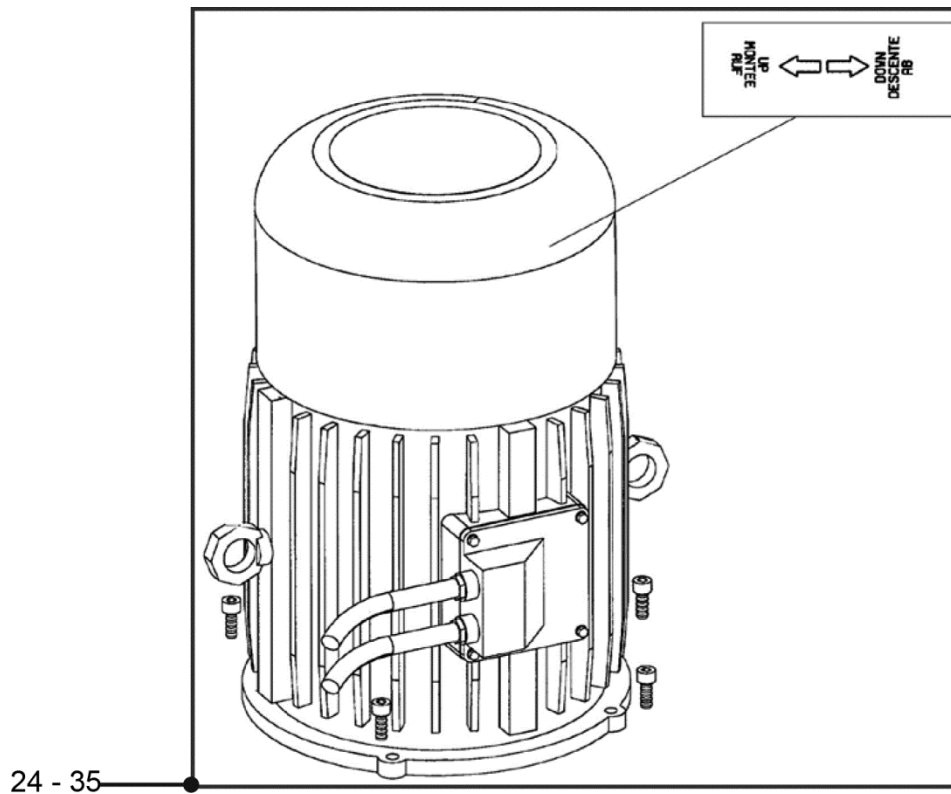


1 - 11

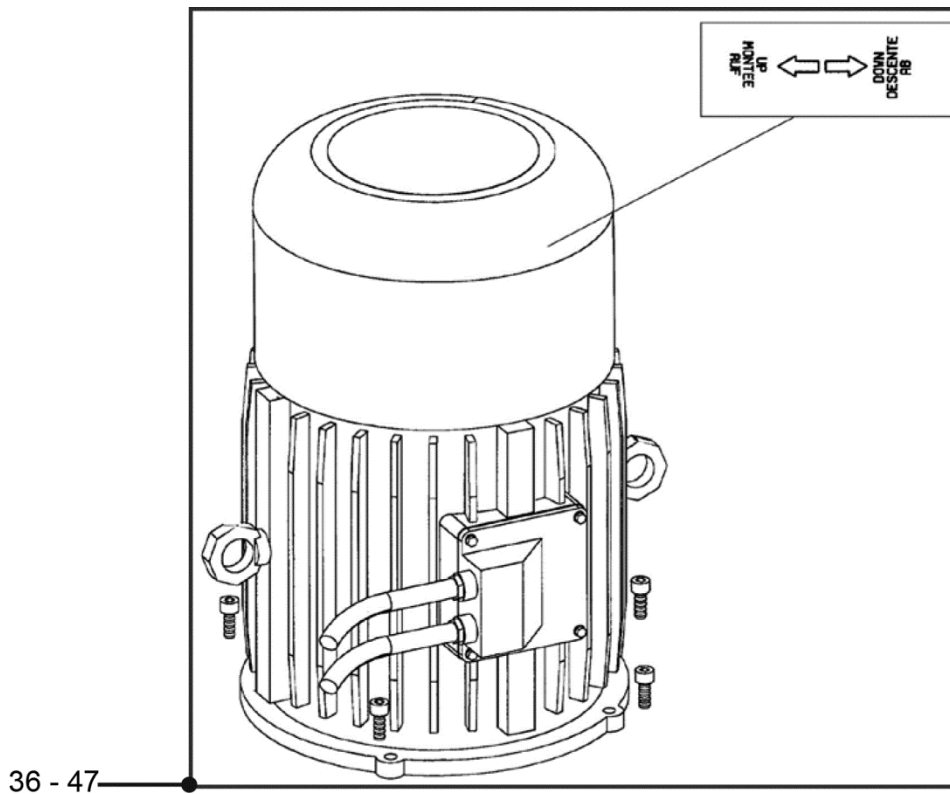
| <b>GAA20401F</b> |                 |   |
|------------------|-----------------|---|
| <b>REF. No.</b>  | <b>PART No.</b> | <b>DESCRIPTION</b>  |
| 1                | GAA20401F1      | Escalator machine (11.7KW/motor, 50Hz, 380 - 415V, indoor)  |
| 2                | GAA20401F2      | Escalator machine (11.7KW/motor, 50Hz, 380 - 415V, outdoor) |
| 3                | GAA20401F3      | Escalator machine (15KW/motor, 50Hz, 380 - 415V, indoor)    |
| 4                | GAA20401F4      | Escalator machine (15KW/motor, 50Hz, 380 - 415V, outdoor)   |
| 5                | GAA20401F5      | Escalator machine (18.6KW/motor, 50Hz, 380 - 415V, indoor)  |
| 6                | GAA20401F6      | Escalator machine (18.6KW/motor, 50Hz, 380 - 415V, outdoor) |
| 7                | GAA20401F7      | Escalator machine (24KW/motor, 50Hz, 380 - 415V, indoor)    |
| 8                | GAA20401F8      | Escalator machine (24KW/motor, 50Hz, 380 - 415V, outdoor)   |
| 9                | GAA20401F9      | Escalator machine (30KW/motor, 50Hz, 380 - 415V, indoor)    |
| 10               | GAA20401F10     | Escalator machine (30KW/motor, 50Hz, 380 - 415V, outdoor)   |
| 11               | GAA20401F999    | Escalator machine (Per Spec.)                               |



| <b>GAA20401F</b> |                 |  |
|------------------|-----------------|--|
| <b>REF. No.</b>  | <b>PART No.</b> | <b>DESCRIPTION</b>                               |
| 12               | GAA20401F210    | Motor (11.7KW/motor, 50Hz, 200 - 208V, TYPE 160) |
| 13               | GAA20401F212    | Motor (11.7KW/motor, 50Hz, 350V, TYPE 160)       |
| 14               | GAA20401F213    | Motor (11.7KW/motor, 50Hz, 380V, TYPE 160)       |
| 15               | GAA20401F214    | Motor (11.7KW/motor, 50Hz, 405 - 415V, TYPE 160) |
| 16               | GAA20401F215    | Motor (11.7KW/motor, 50Hz, 440V, TYPE 160)       |
| 17               | GAA20401F216    | Motor (11.7KW/motor, 50Hz, 460 - 480V, TYPE 160) |
| 18               | GAA20401F220    | Motor (15.0KW/motor, 50Hz, 200 - 208V, TYPE 160) |
| 19               | GAA20401F222    | Motor (15.0KW/motor, 50Hz, 350V, TYPE 160)       |
| 20               | GAA20401F223    | Motor (15.0KW/motor, 50Hz, 380V, TYPE 160)       |
| 21               | GAA20401F224    | Motor (15.0KW/motor, 50Hz, 405 - 415V, TYPE 160) |
| 22               | GAA20401F225    | Motor (15.0KW/motor, 50Hz, 440V, TYPE 160)       |
| 23               | GAA20401F226    | Motor (15.0KW/motor, 50Hz, 460 - 480V, TYPE 160) |

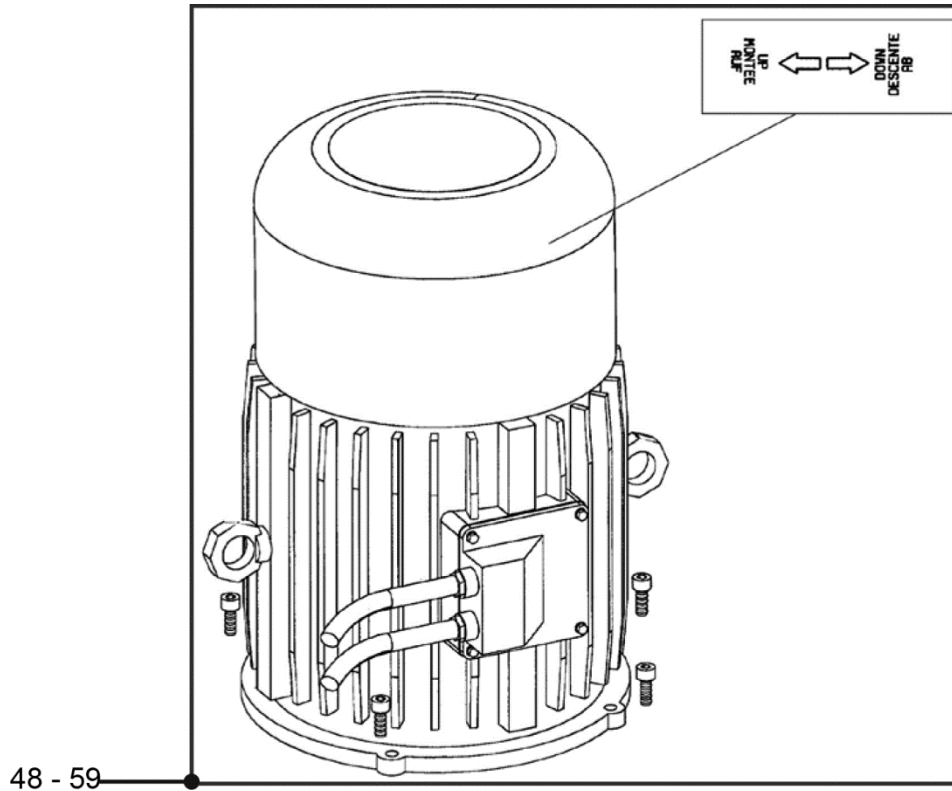


| <b>GAA20401F</b> |                 |  |
|------------------|-----------------|--|
| <b>REF. No.</b>  | <b>PART No.</b> | <b>DESCRIPTION</b>                               |
| 24               | GAA20401F230    | Motor (18.6KW/motor, 50Hz, 200 - 208V, TYPE 180) |
| 25               | GAA20401F232    | Motor (18.6KW/motor, 50Hz, 350V, TYPE 180)       |
| 26               | GAA20401F233    | Motor (18.6KW/motor, 50Hz, 380V, TYPE 180)       |
| 27               | GAA20401F234    | Motor (18.6KW/motor, 50Hz, 405 - 415V, TYPE 180) |
| 28               | GAA20401F235    | Motor (18.6KW/motor, 50Hz, 440V, TYPE 180)       |
| 29               | GAA20401F236    | Motor (18.6KW/motor, 50Hz, 460 - 480V, TYPE 180) |
| 30               | GAA20401F240    | Motor (24.0KW/motor, 50Hz, 200 - 208V, TYPE 225) |
| 31               | GAA20401F242    | Motor (24.0KW/motor, 50Hz, 350V, TYPE 225)       |
| 32               | GAA20401F243    | Motor (24.0KW/motor, 50Hz, 380V, TYPE 225)       |
| 33               | GAA20401F244    | Motor (24.0KW/motor, 50Hz, 405 - 415V, TYPE 225) |
| 34               | GAA20401F245    | Motor (24.0KW/motor, 50Hz, 440V, TYPE 225)       |
| 35               | GAA20401F246    | Motor (24.0KW/motor, 50Hz, 460 - 480V, TYPE 225) |

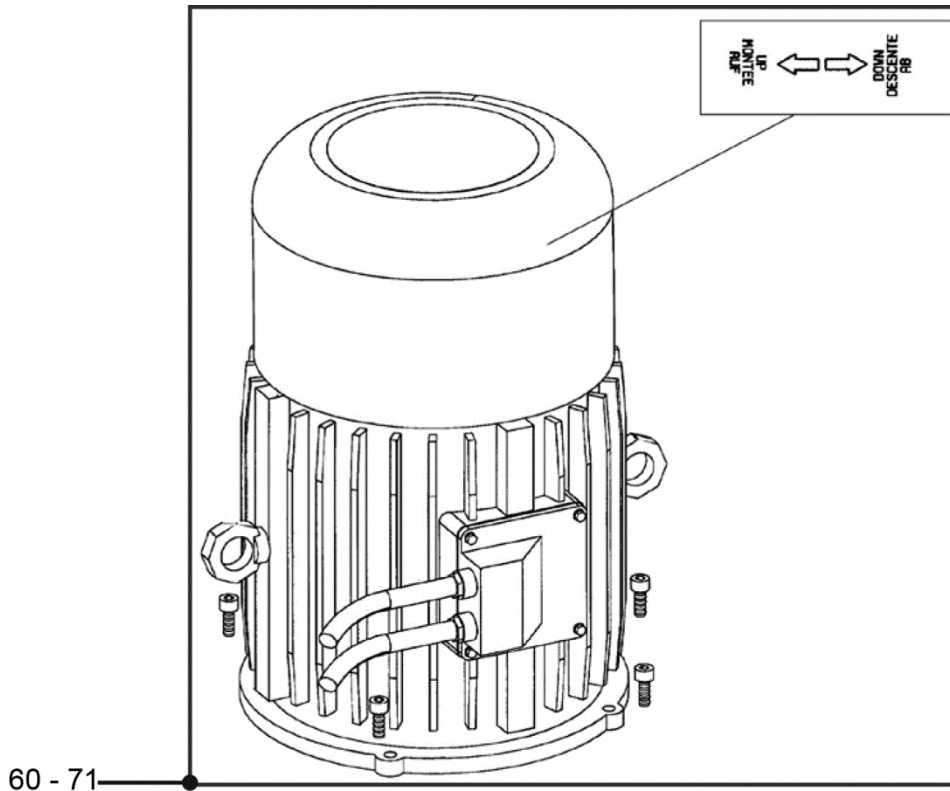


| <b>GAA20401F</b> |                 |  |
|------------------|-----------------|--|
| <b>REF. No.</b>  | <b>PART No.</b> | <b>DESCRIPTION</b>                                 |
| 36               | GAA20401F250    | Motor (30.0KW/motor, 50Hz, 200 - 208V, TYPE 225)   |
| 37               | GAA20401F252    | Motor (30.0KW/motor, 50Hz, 350V, TYPE 225)         |
| 38               | GAA20401F253    | Motor (30.0KW/motor, 50Hz, 380V, TYPE 225)         |
| 39               | GAA20401F254    | Motor (30.0KW/motor, 50Hz, 405 - 415V, TYPE 225)   |
| 40               | GAA20401F255    | Motor (30.0KW/motor, 50Hz, 440V, TYPE 225)         |
| 41               | GAA20401F256    | Motor (30.0KW/motor, 50Hz, 460 - 480V, TYPE 225)   |
| 42               | GAA20401F310    | Motor (11.7KW/motor, 60Hz, 200 - 208V, TYPE AF160) |
| 43               | GAA20401F311    | Motor (11.7KW/motor, 60Hz, 220V, TYPE AF160)       |
| 44               | GAA20401F313    | Motor (11.7KW/motor, 60Hz, 380V, TYPE AF160)       |
| 45               | GAA20401F315    | Motor (11.7KW/motor, 60Hz, 440V, TYPE AF160)       |
| 46               | GAA20401F316    | Motor (11.7KW/motor, 60Hz, 460 - 480V, TYPE AF160) |
| 47               | GAA20401F317    | Motor (11.7KW/motor, 60Hz, 575 - 600V, TYPE AF160) |

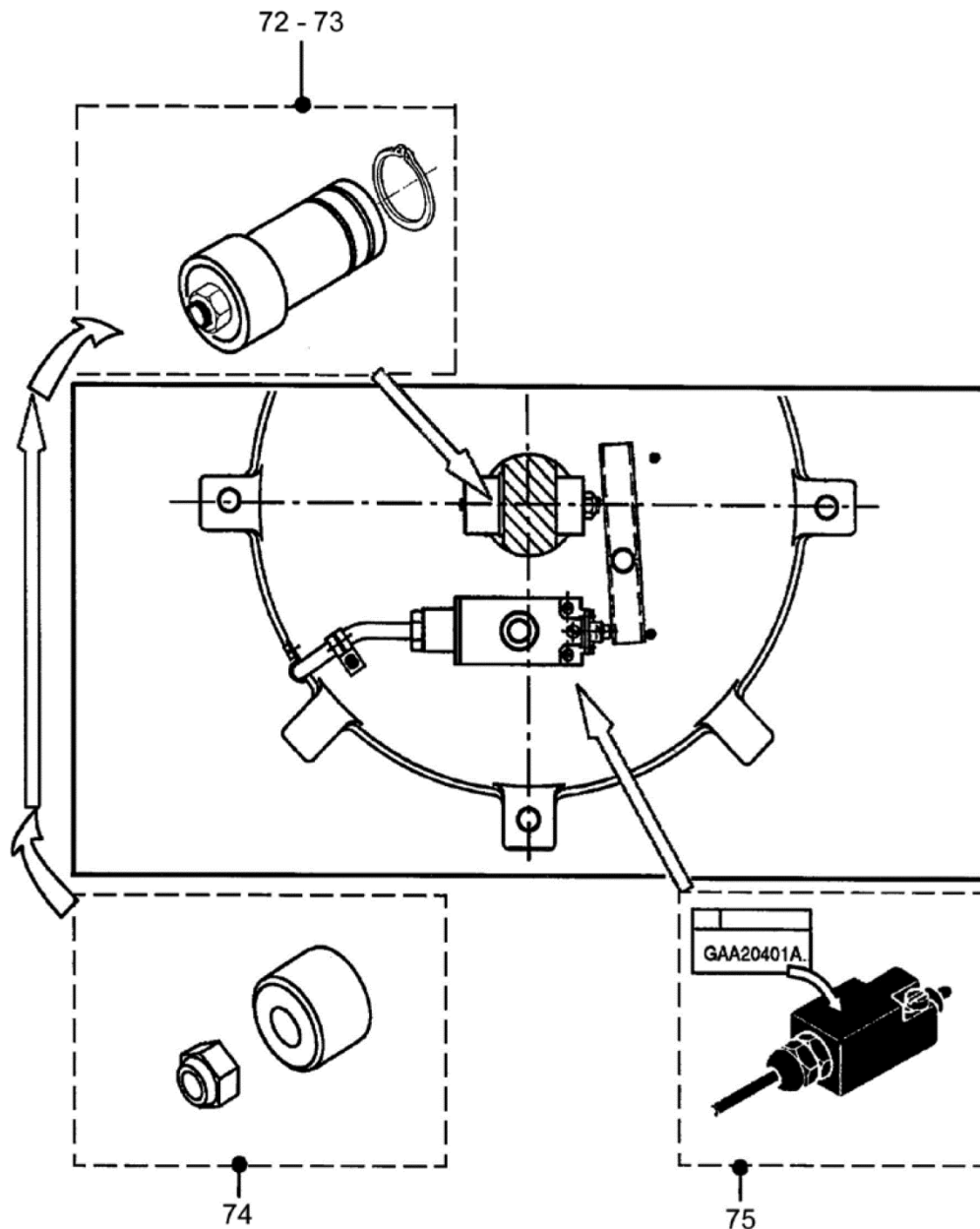




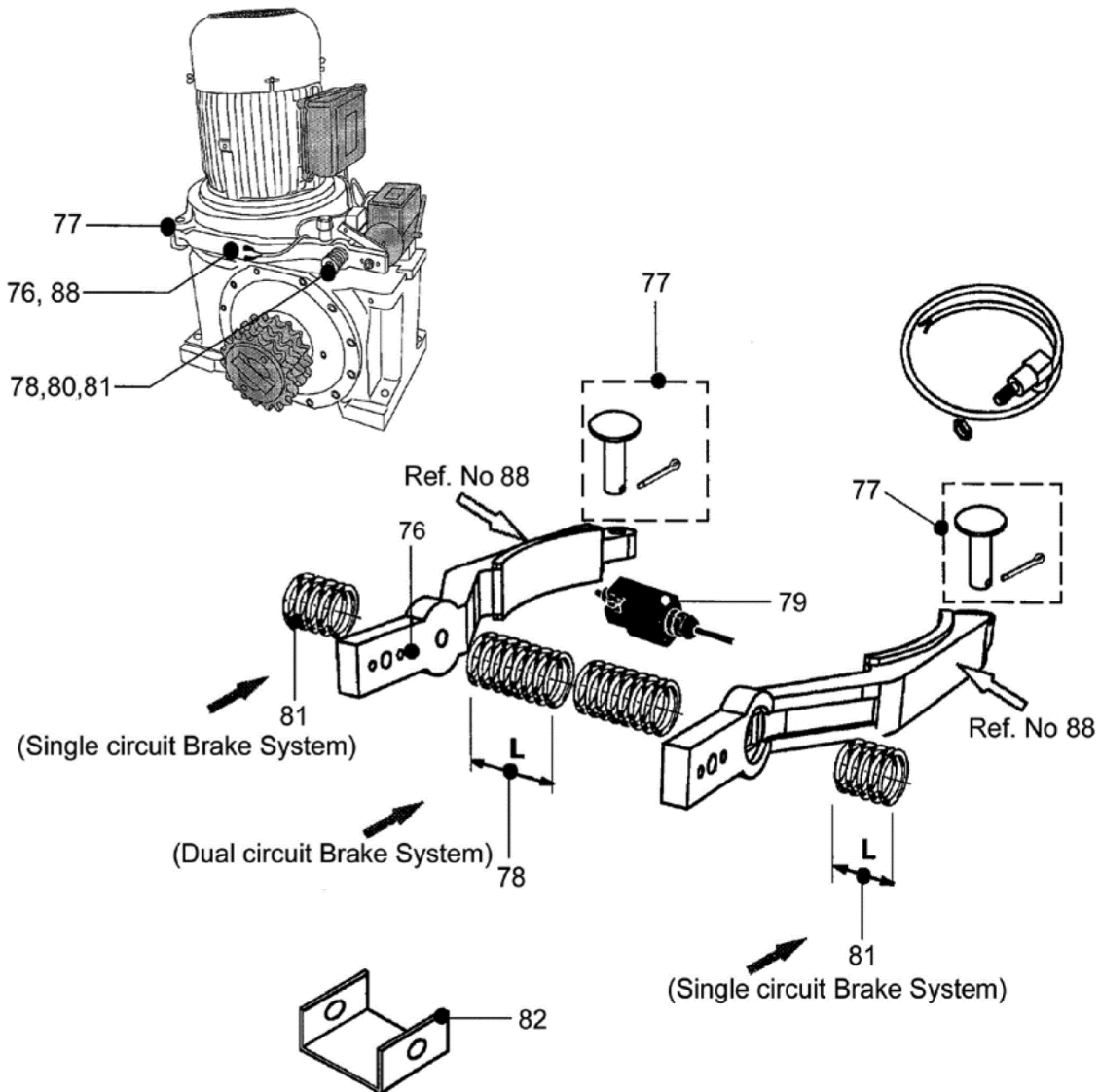
| <b>GAA20401F</b> |                 |  |
|------------------|-----------------|--|
| <b>REF. No.</b>  | <b>PART No.</b> | <b>DESCRIPTION</b>                               |
| 48               | GAA20401F320    | Motor (15.0KW/motor, 60Hz, 200 - 208V, TYPE 160) |
| 49               | GAA20401F321    | Motor (15.0KW/motor, 60Hz, 220V, TYPE 160)       |
| 50               | GAA20401F323    | Motor (15.0KW/motor, 60Hz, 380V, TYPE 160)       |
| 51               | GAA20401F325    | Motor (15.0KW/motor, 60Hz, 440V, TYPE 160)       |
| 52               | GAA20401F326    | Motor (15.0KW/motor, 60Hz, 460 - 480V, TYPE 160) |
| 53               | GAA20401F327    | Motor (15.0KW/motor, 60Hz, 575 - 600V, TYPE 160) |
| 54               | GAA20401F330    | Motor (18.6KW/motor, 60Hz, 200 - 208V, TYPE 225) |
| 55               | GAA20401F331    | Motor (18.6KW/motor, 60Hz, 220V, TYPE 225)       |
| 56               | GAA20401F333    | Motor (18.6KW/motor, 60Hz, 380V, TYPE 225)       |
| 57               | GAA20401F335    | Motor (18.6KW/motor, 60Hz, 440V, TYPE 225)       |
| 58               | GAA20401F336    | Motor (18.6KW/motor, 60Hz, 460 - 480V, TYPE 225) |
| 59               | GAA20401F337    | Motor (18.6KW/motor, 60Hz, 575 - 600V, TYPE 225) |



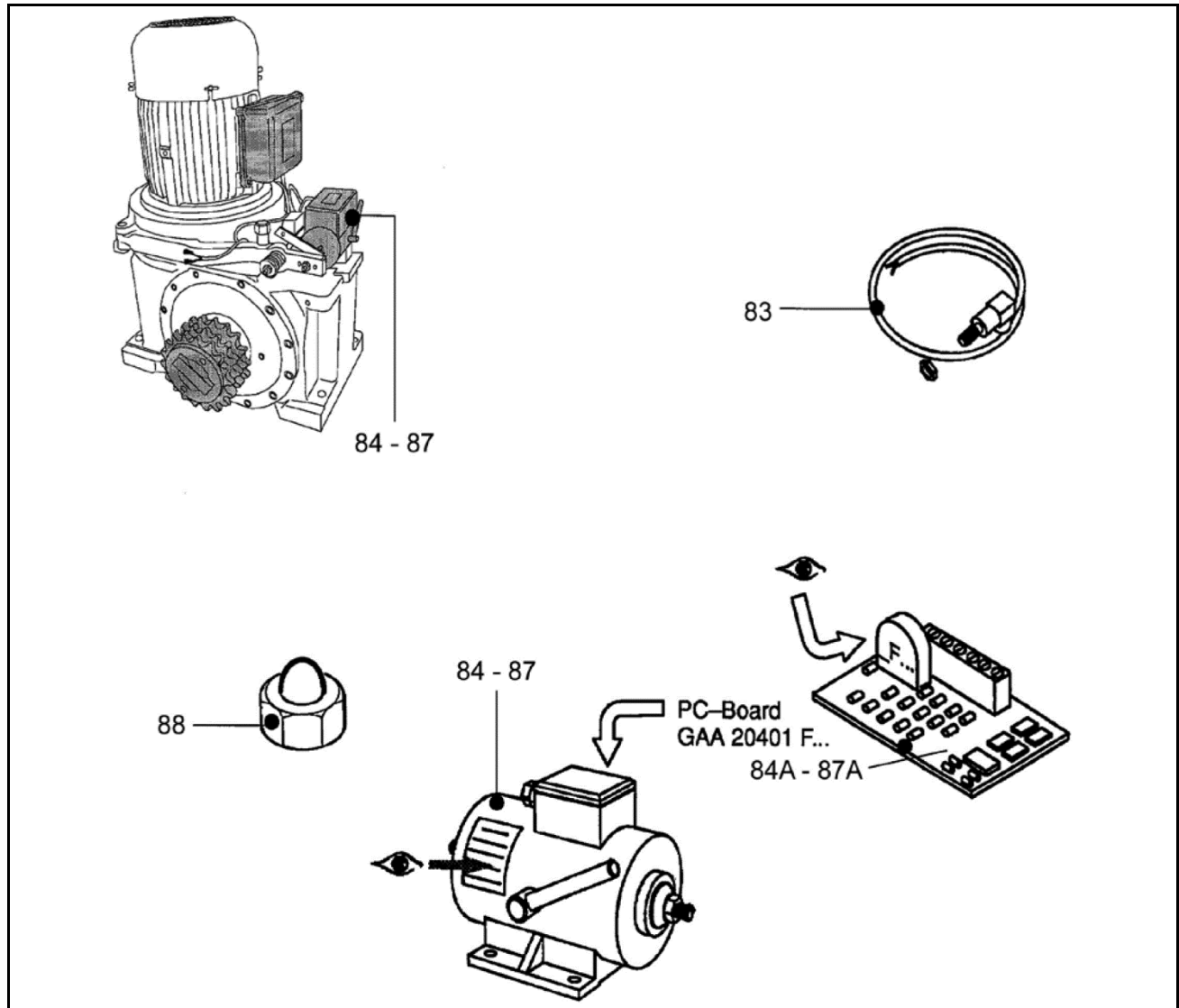
| <b>GAA20401F</b> |                 |  |
|------------------|-----------------|--|
| <b>REF. No.</b>  | <b>PART No.</b> | <b>DESCRIPTION</b>                                 |
| 60               | GAA20401F340    | Motor (24.0KW/motor, 60Hz, 200 - 208V, TYPE AF225) |
| 61               | GAA20401F341    | Motor (24.0KW/motor, 60Hz, 220V, TYPE AF225)       |
| 62               | GAA20401F343    | Motor (24.0KW/motor, 60Hz, 380V, TYPE AF225)       |
| 63               | GAA20401F345    | Motor (24.0KW/motor, 60Hz, 440V, TYPE AF225)       |
| 64               | GAA20401F346    | Motor 24.0KW/motor, 60Hz, 460 - 480V, TYPE AF225)  |
| 65               | GAA20401F347    | Motor (24.0KW/motor, 60Hz, 575 - 600V, TYPE AF225) |
| 66               | GAA20401F350    | Motor (30.0KW/motor, 60Hz, 200 - 208V, TYPE AF225) |
| 67               | GAA20401F351    | Motor (30.0KW/motor, 60Hz, 220V, TYPE AF225)       |
| 68               | GAA20401F353    | Motor (30.0KW/motor, 60Hz, 380V, TYPE AF225)       |
| 69               | GAA20401F355    | Motor (30.0KW/motor, 60Hz, 440V, TYPE AF225)       |
| 70               | GAA20401F356    | Motor (30.0KW/motor, 60Hz, 460 - 480V, TYPE AF225) |
| 71               | GAA20401F357    | Motor (30.0KW/motor, 60Hz, 575 - 600V, TYPE AF225) |







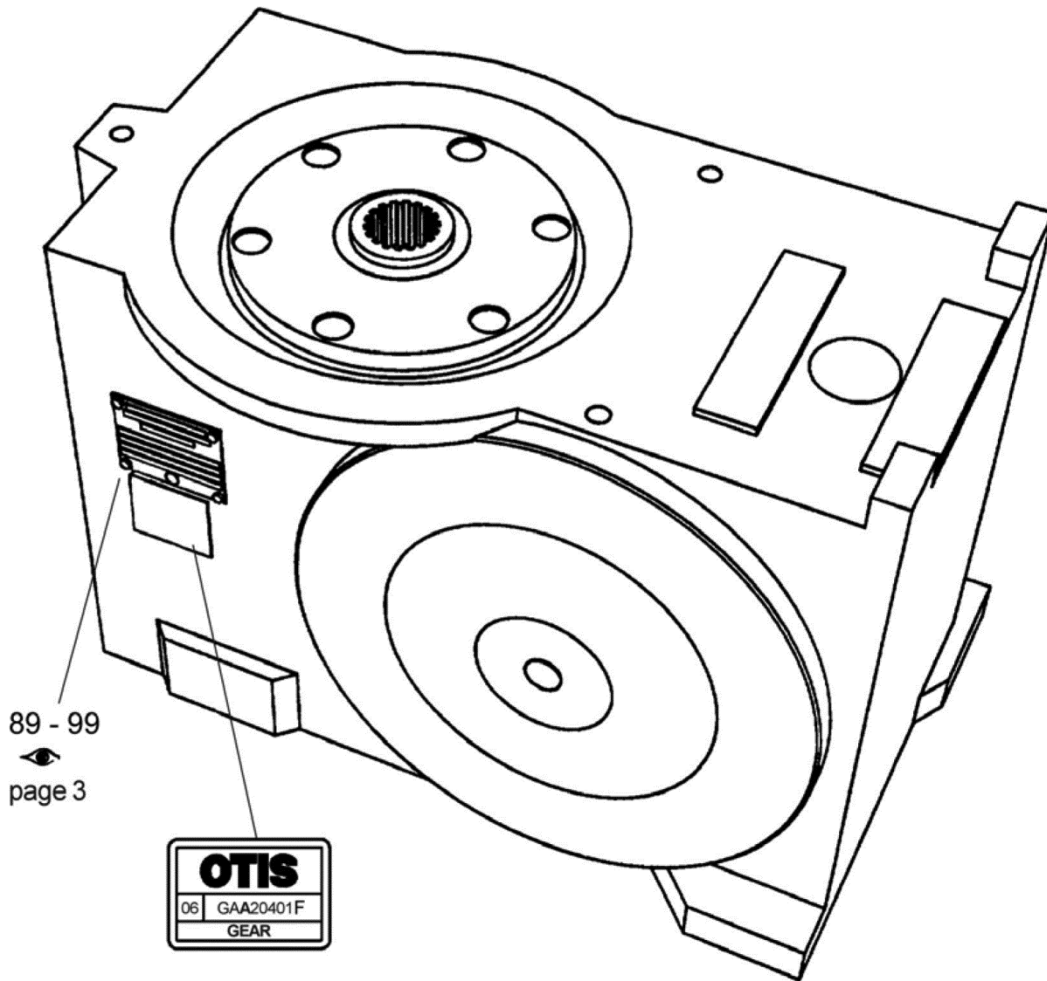
| GAA20401F |              |                                 |
|-----------|--------------|---------------------------------|
| REF. No.  | PART No.     | DESCRIPTION                     |
| 72        | GAA20401B502 | Overspeed Governor 50Hz         |
| 73        | GAA20401B503 | Overspeed Governor 60Hz         |
| 74        | GO2000BG1    | Test set for Overspeed Governor |
| 75        | GAA20401A505 | Overspeed Governor Switch       |



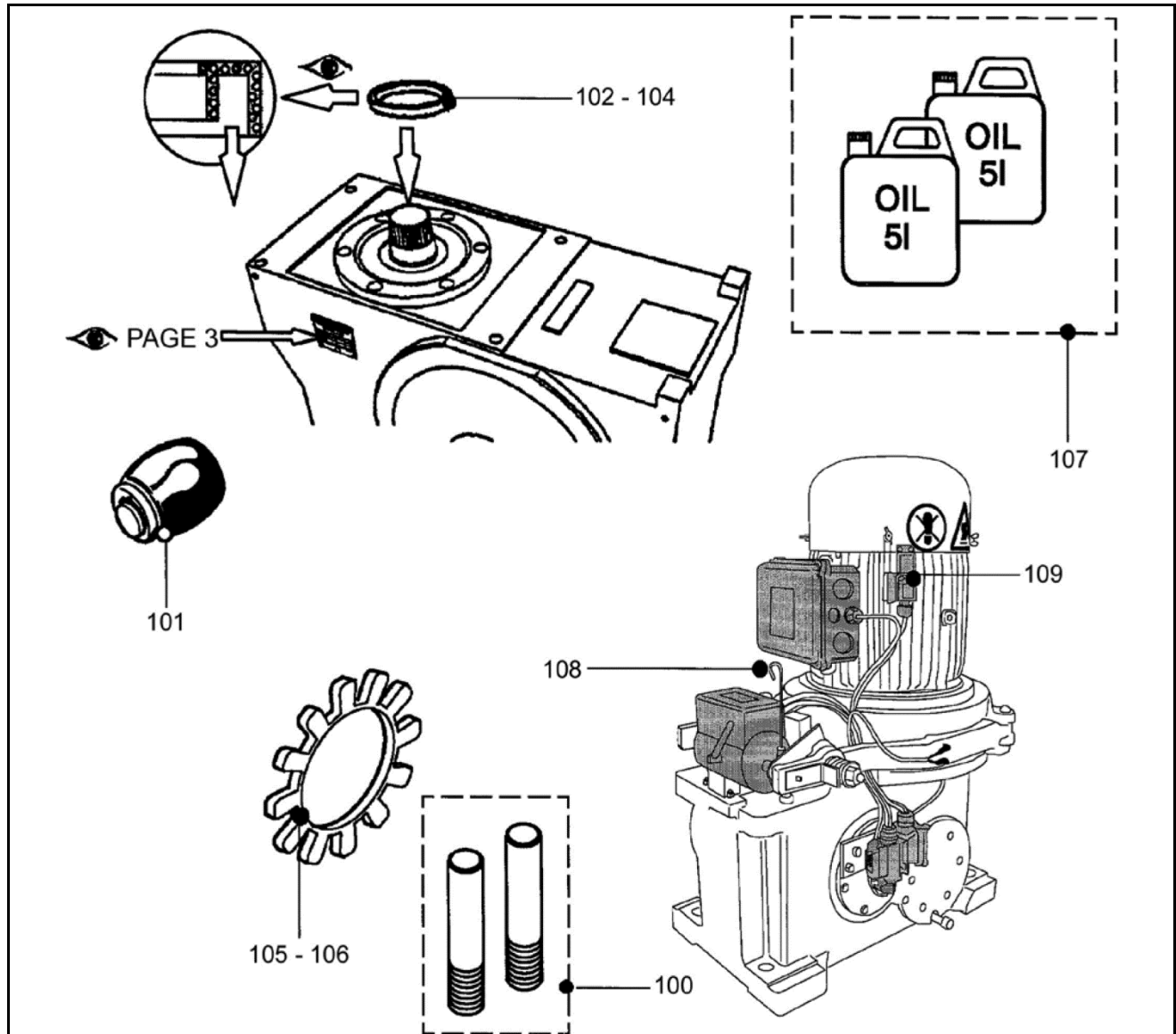
| <b>GAA20401F</b> |                 |  |
|------------------|-----------------|--|
| <b>REF. No.</b>  | <b>PART No.</b> | <b>DESCRIPTION</b>                                 |
| 76               | GAA20401B506    | Brake lever (1 piece)                              |
|                  | GAA20401B508    | Brake lever w/ brake lining wear contact (1 piece) |
| 77               | GAA20401A507    | Pin & Cotter pin (1 piece)                         |
| 78               | GAA20401A508    | Spring (Dual circuit brake system) L=92mm          |
| 79               | GAA20401F025    | Brake function switch                              |
| 80               | GAA20401F016    | Set: Limiter for brake spring                      |
| 81               | GAA20401F020    | Set: Spring (Single circuit brake system) L=46.5mm |
| 82               | GAA20401F021    | Spring Limiter (Single circuit)                    |



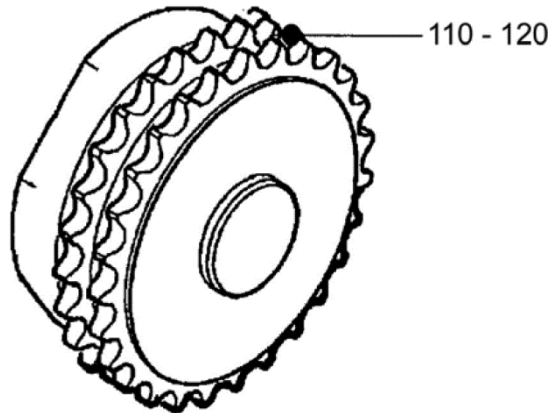
| GAA20401F |              |  |
|-----------|--------------|--|
| REF. No.  | PART No.     | DESCRIPTION  |
| 83        | GAA20401A515 | Impuls Generator M12x1   |
| 84        | GAA20401F501 | Brake Solenoid O-21H 230V                               |
| 84A       | GAA20401F531 | PC-Board for GAA20401F501  |
| 85        | GAA20401F502 | Brake Solenoid O-22H 230V  (Dual circuit Brake System)  |
| 85A       | GAA20401F532 | PC-Board for GAA20401F502  |
| 86        | GAA20401F505 | Brake Solenoid O-21CH 230V                              |
| 86A       | GAA20401F531 | PC-Board for GAA20401F505  |
| 87        | GAA20401F506 | Brake Solenoid O-22CH 230V  (Dual circuit Brake System) |
| 87A       | GAA20401F532 | PC-Board for GAA20401F506  |
| 88        | GAA20401B534 | Set: Cap for Brake Lining Wear Control Contact   |



| <b>GAA20401F</b> |                 |   |        |
|------------------|-----------------|---|--------|
| <b>REF. No.</b>  | <b>PART No.</b> | <b>DESCRIPTION</b>                                      |        |
| 89               | GAA20401F101    | Gear Case EC H2-18 (Chain Machine 11.7-18.6KW)          | i=22.4 |
| 90               | GAA20401F102    | Gear Case EC H2-18 (Chain Machine 11.7-18.6KW)          | i=24.0 |
| 91               | GAA20401F103    | Gear Case EC H2-24 (Chain Machine 24.0-30.0KW)          | i=22.4 |
| 92               | GAA20401F104    | Gear Case EC H2-24 (Chain Machine 24.0-30.0KW)          | i=24.0 |
| 93               | GAA20401F105    | Gear Case EC H2-18 (Dual Drive 2x15.0-2x18.6KW)         | i=22.4 |
| 94               | GAA20401F106    | Gear Case EC H2-18 (Dual Drive 2x15.0-2x18.6KW)         | i=24.0 |
| 95               | GAA20401F107    | Gear Case EC H2-24K (Coupling Machine 11.7-24.0KW)      | i=22.4 |
| 96               | GAA20401F108    | Gear Case EC H2-24K (Coupling Machine 11.7-24.0KW)      | i=24.0 |
| 97               | GAA20401F109    | Gear Case EC H2-24Duplex (Coupling Machine 11.7-24.0KW) | i=22.4 |
| 98               | GAA20401F110    | Gear Case EC H2-24Duplex (Coupling Machine 11.7-24.0KW) | i=24.0 |
| 99               | GAA20401F111    | Gear Case EC H2-24 (Chain Machine 11.7-30.0KW)          | i=20.1 |



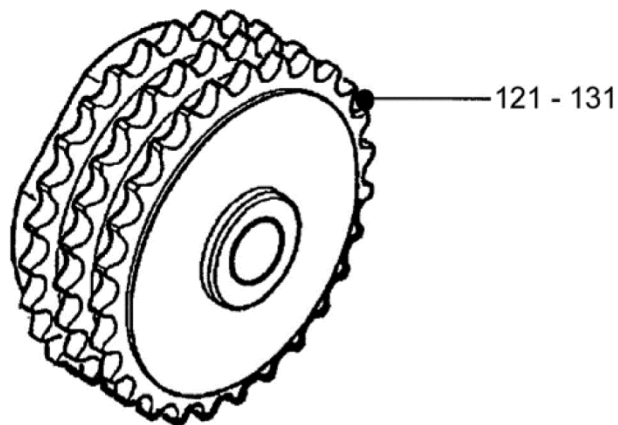
| GAA20401F |              |  |
|-----------|--------------|--|
| REF. No.  | PART No.     | DESCRIPTION  |
| 100       | GAA20401F004 | Set: Guide screw for motor   |
| 101       | GAA20401B597 | Buffer for dual drive & intermediate gear (12 piece compl. W Hardware) |
| 102       | GAA20401F011 | Input shaft seal (repair kit)  |
| 103       | GAA20401F012 | Output shaft seal $\Phi 90$  |
| 104       | GAA20401F013 | Output shaft seal $\Phi 95$  |
| 105       | GAA20401F014 | Motor coupling clutch - buffer ring $\Phi 140$                         |
| 106       | GAA20401B762 | Motor coupling clutch - buffer ring $\Phi 122$                         |
| 107       | GAA20401C540 | Oil, 2x5l synthetic oil, OTIS NO. 54                                   |
| 108       | GAA20401F019 | Oil level indicator  |
| 109       | GAA20401F023 | Hand wheel safety switch (preventing manipulation of the actuator)     |



| <b>GAA20401F</b> |                 |                    |
|------------------|-----------------|--------------------|
| <b>REF. No.</b>  | <b>PART No.</b> | <b>DESCRIPTION</b> |
| 110              | GAA20401B601    | Sprocket, 17 teeth |
| 111              | GAA20401B602    | Sprocket, 18 teeth |
| 112              | GAA20401B603    | Sprocket, 19 teeth |
| 113              | GAA20401B604    | Sprocket, 20 teeth |
| 114              | GAA20401B605    | Sprocket, 21 teeth |
| 115              | GAA20401B606    | Sprocket, 22 teeth |
| 116              | GAA20401B607    | Sprocket, 23 teeth |
| 117              | GAA20401B608    | Sprocket, 24 teeth |
| 118              | GAA20401B609    | Sprocket, 25 teeth |
| 119              | GAA20401B610    | Sprocket, 26 teeth |
| 120              | GAA20401B611    | Sprocket, 27 teeth |

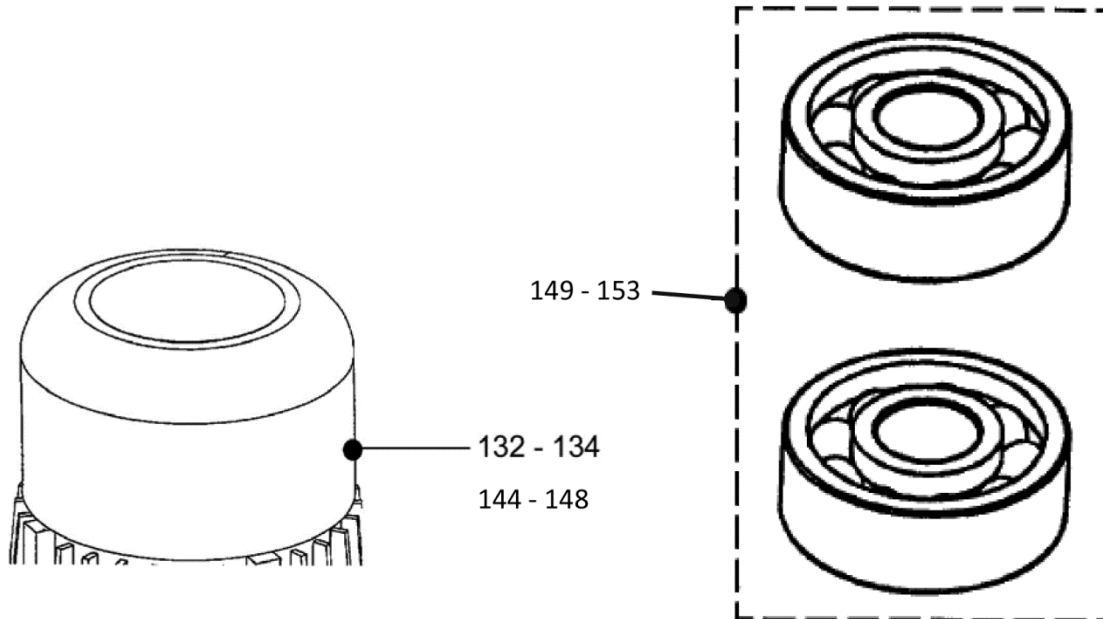
DIN8187 / DIN8188  
1-1/4 duplex



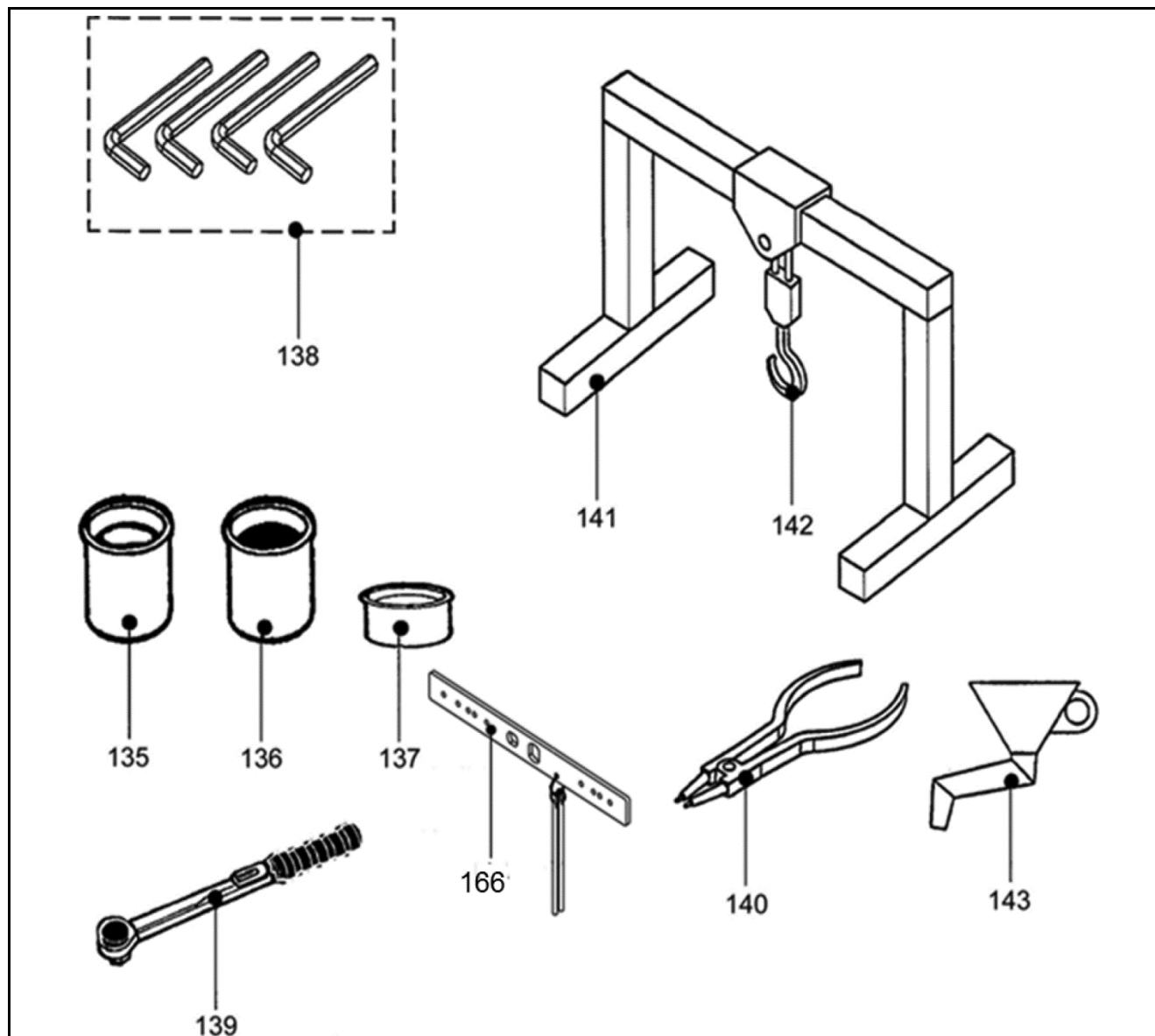


| <b>GAA20401F</b> |                 |                    |
|------------------|-----------------|--------------------|
| <b>REF. No.</b>  | <b>PART No.</b> | <b>DESCRIPTION</b> |
| 121              | GAA20401B612    | Sprocket, 17 teeth |
| 122              | GAA20401B613    | Sprocket, 18 teeth |
| 123              | GAA20401B614    | Sprocket, 19 teeth |
| 124              | GAA20401B615    | Sprocket, 20 teeth |
| 125              | GAA20401B616    | Sprocket, 21 teeth |
| 126              | GAA20401B617    | Sprocket, 22 teeth |
| 127              | GAA20401B618    | Sprocket, 23 teeth |
| 128              | GAA20401B619    | Sprocket, 24 teeth |
| 129              | GAA20401B620    | Sprocket, 25 teeth |
| 130              | GAA20401B621    | Sprocket, 26 teeth |
| 131              | GAA20401B622    | Sprocket, 27 teeth |

DIN8187 / DIN8188 1-1/4 triplex

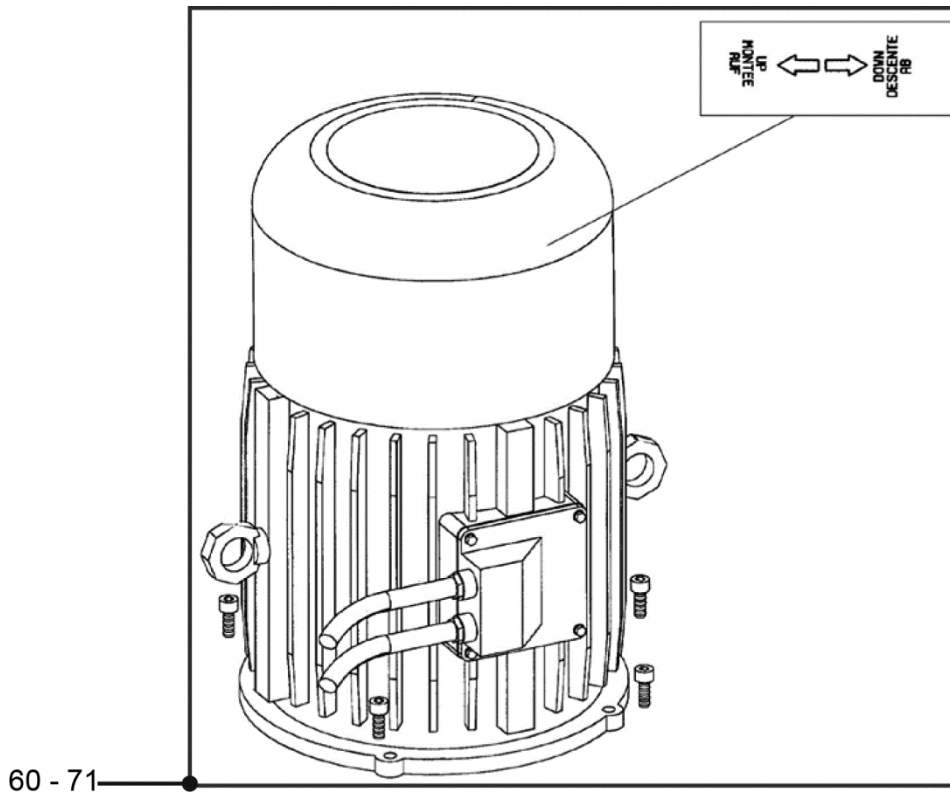


| <b>GAA20401F</b> |                 |   |
|------------------|-----------------|---|
| <b>REF. No.</b>  | <b>PART No.</b> | <b>DESCRIPTION</b>                                  |
| 132              | GAA20401F031    | Cover for Motor type 160                            |
| 133              | GAA20401F032    | Cover for Motor type 180                            |
| 134              | GAA20401F033    | Cover for Motor type 225                            |
| 144              | GAA20401F017    | Fan for Motor type 160 (up to 15kW, Emod motor)     |
| 145              | GAA20401F018    | Fan for Motor type 180/225 (up to 30kW, Emod motor) |
| 146              | GAA20401F028    | Fan for Motor type 160 (ATB motor)                  |
| 147              | GAA20401F029    | Fan for Motor type 180 (ATB motor)                  |
| 148              | GAA20401F030    | Fan for Motor type 225 (ATB motor)                  |
| 149              | GAA20401F007    | Repair kit for motor type 160 (Emod Motor)          |
| 150              | GAA20401F008    | Repair kit for motor type 180 (Emod Motor)          |
| 151              | GAA20401F009    | Repair kit for motor type 225 (Emod Motor)          |
| 152              | GAA20401F034    | Repair kit for motor type 160 (ATB Motor)           |
| 153              | GAA20401F035    | Repair kit for motor type 180/225 (ATB Motor)       |



**GAA20401F**

| REF. No. | PART No.     | DESCRIPTION                   |
|----------|--------------|-------------------------------|
| 135      | GAA20401B764 | Mounting paste shaft seal     |
| 136      | GAA20401B766 | Screw retaining paste         |
| 137      | GAA20401B769 | Sealing compound              |
| 138      | GAA20401B770 | Set of allen key              |
| 139      | GAA20401B771 | Torque wrench 50-200Nm        |
| 140      | GAA20401B772 | Retaining ring plier          |
| 141      | GAA20401B773 | Assembly stand                |
| 142      | GAA20401B774 | Lifting device                |
| 143      | GAA20401B775 | Funnel tube                   |
| 166      | GAA27ED1     | Motor blocking(safety) device |



| <b>GAA20401F</b> |                 |  |
|------------------|-----------------|--|
| <b>REF. No.</b>  | <b>PART No.</b> | <b>DESCRIPTION</b>                               |
| 154              | GAA20401F200    | Motor (7.5KW/motor, 50Hz, 200 - 208V, TYPE Y160) |
| 155              | GAA20401F202    | Motor (7.5KW/motor, 50Hz, 350V, TYPE Y160)       |
| 156              | GAA20401F203    | Motor (7.5KW/motor, 50Hz, 380V, TYPE Y160)       |
| 157              | GAA20401F204    | Motor (7.5KW/motor, 50Hz, 400 - 415V, TYPE Y160) |
| 158              | GAA20401F205    | Motor (7.5KW/motor, 50Hz, 440V, TYPE Y160)       |
| 159              | GAA20401F206    | Motor (7.5KW/motor, 50Hz, 460 - 480V, TYPE Y160) |
| 160              | GAA20401F300    | Motor (7.5KW/motor, 60Hz, 200 - 208V, TYPE Y160) |
| 161              | GAA20401F301    | Motor (7.5KW/motor, 60Hz, 220V, TYPE Y160)       |
| 162              | GAA20401F303    | Motor (7.5KW/motor, 60Hz, 380V, TYPE Y160)       |
| 163              | GAA20401F305    | Motor (7.5KW/motor, 60Hz, 440V, TYPE Y160)       |
| 164              | GAA20401F306    | Motor (7.5KW/motor, 60Hz, 460 - 480V, TYPE Y160) |
| 165              | GAA20401F307    | Motor (7.5KW/motor, 60Hz, 575 - 600V, TYPE Y160) |