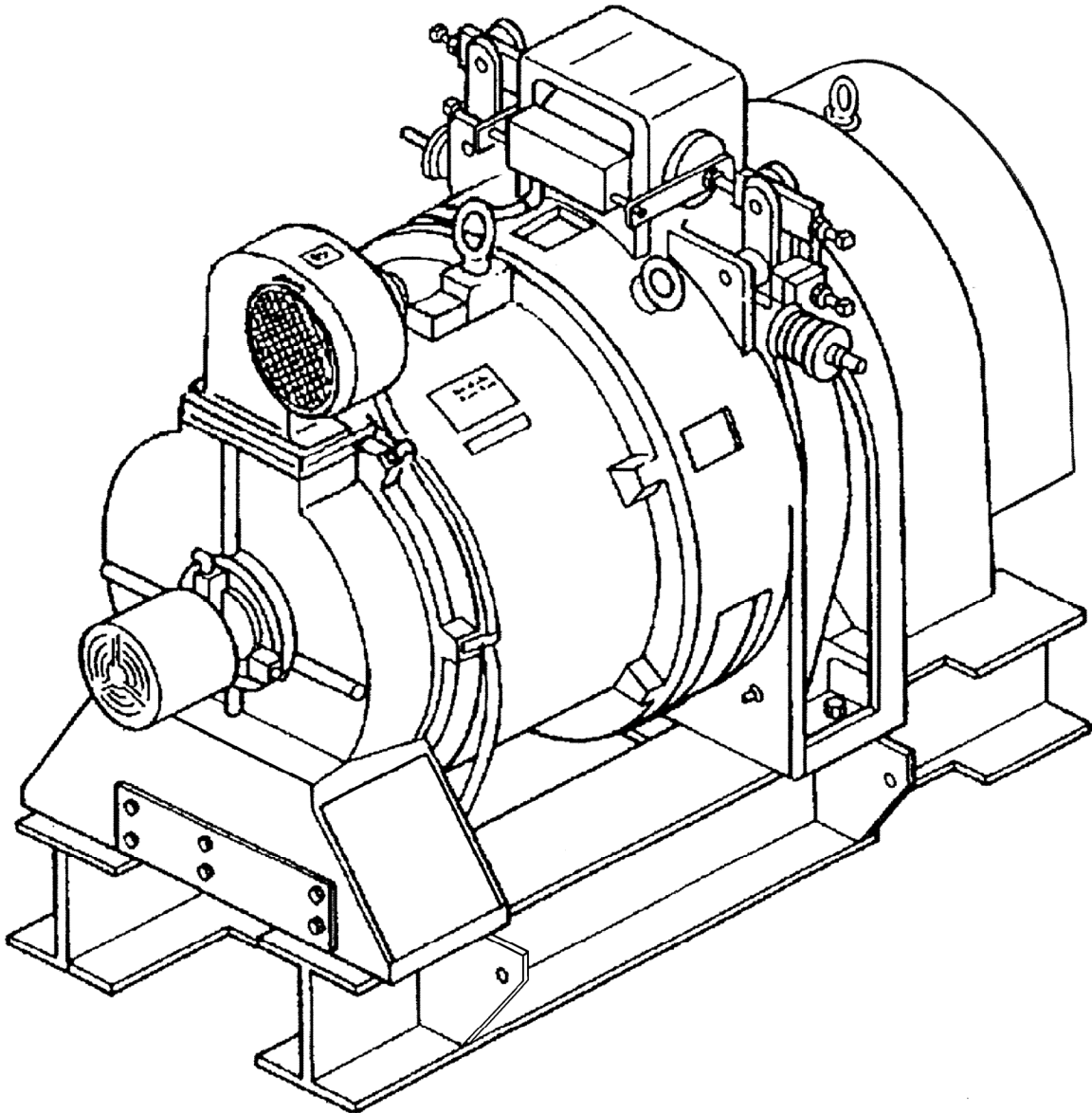


156MST machine
(CSA, with Hilliard Brake)

Spare Parts Leaflet
06-JAA20220AAS

February 19, 2014 / Page 1 of 12



OTIS

SERVICE ENGINEERING
Otis Elevator Company
Shibayama Factory, Japan

Unpublished Work—© Otis Elevator Co.; 2014

Leaflet Description

This leaflet provides spare parts information for 156MST machine
Used for OVF416 DRIVE and CSA / CEN code.

Leaflet Revisions

Date Revised	Subject Matter Expert	Reason for Revision
August 20, 2009	Yamaoka, Takayuki	New SPL
February 19, 2014	Val Sheynkman	Updated illustration on p. 9

Related Drawings

Drawing No.	Title	Drawing No.	Title
---	---	---	---

Related Documents

Document ID	Title
---	---

Subject Matter Expert

Name	Department
Val Sheynkman	OSC Service Engineering

About Spare Parts Leaflets...



This document lists the lowest replaceable units (LRUs) for the standard version of the product. The LRUs are chosen by a team of Otis associates representing engineering and manufacturing.

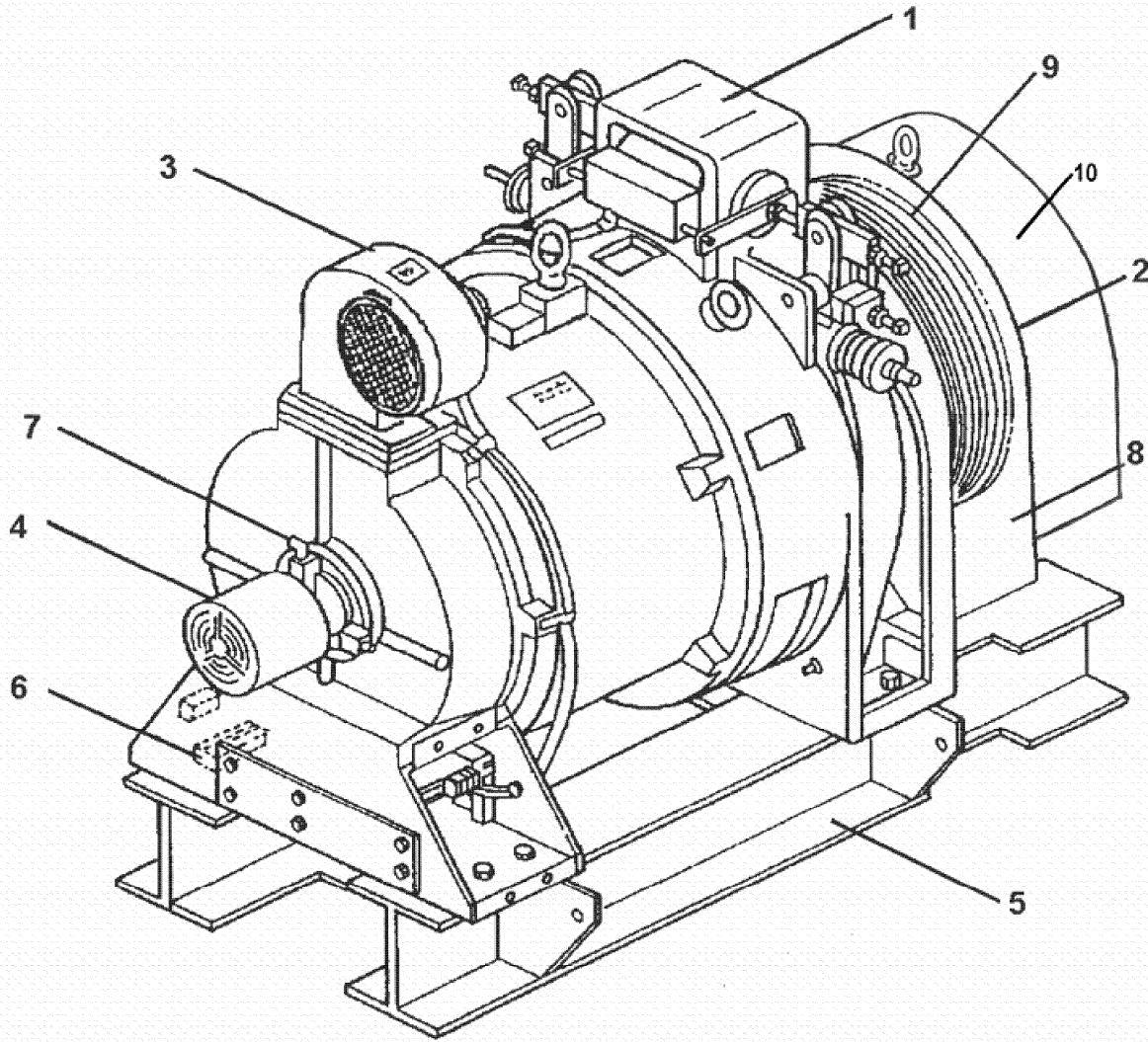
While goal of this document is to make parts identification as easy as possible, the document cannot be all-inclusive. Elevator and escalator contracts classified as “special” or “custom” are not addressed here. For such contracts, please refer to specified information, the contract folder, TIPS, Field Education Articles, Construction Letters, etc. for further information.

If you have any suggestions about this document, please contact the subject matter expert listed on this page.

Arrangement

06-JAA20220AAS



ASSEMBLY NO.	M/C ASS'Y ( page5)	LOAD VOLTAGE	DRIVING SHEAVE ( page9)		
JAA20220AAS	JAA20220AAT	900-1800Kg 480V/60Hz	JAA00261AAB		
				1	102
				2	106
				3	102
				4	106
				5	102
				6	106
				7	102
				8	106
				9	102
				10	106
				11	102
				12	106
				13	102
				14	106
				15	102
16	106				

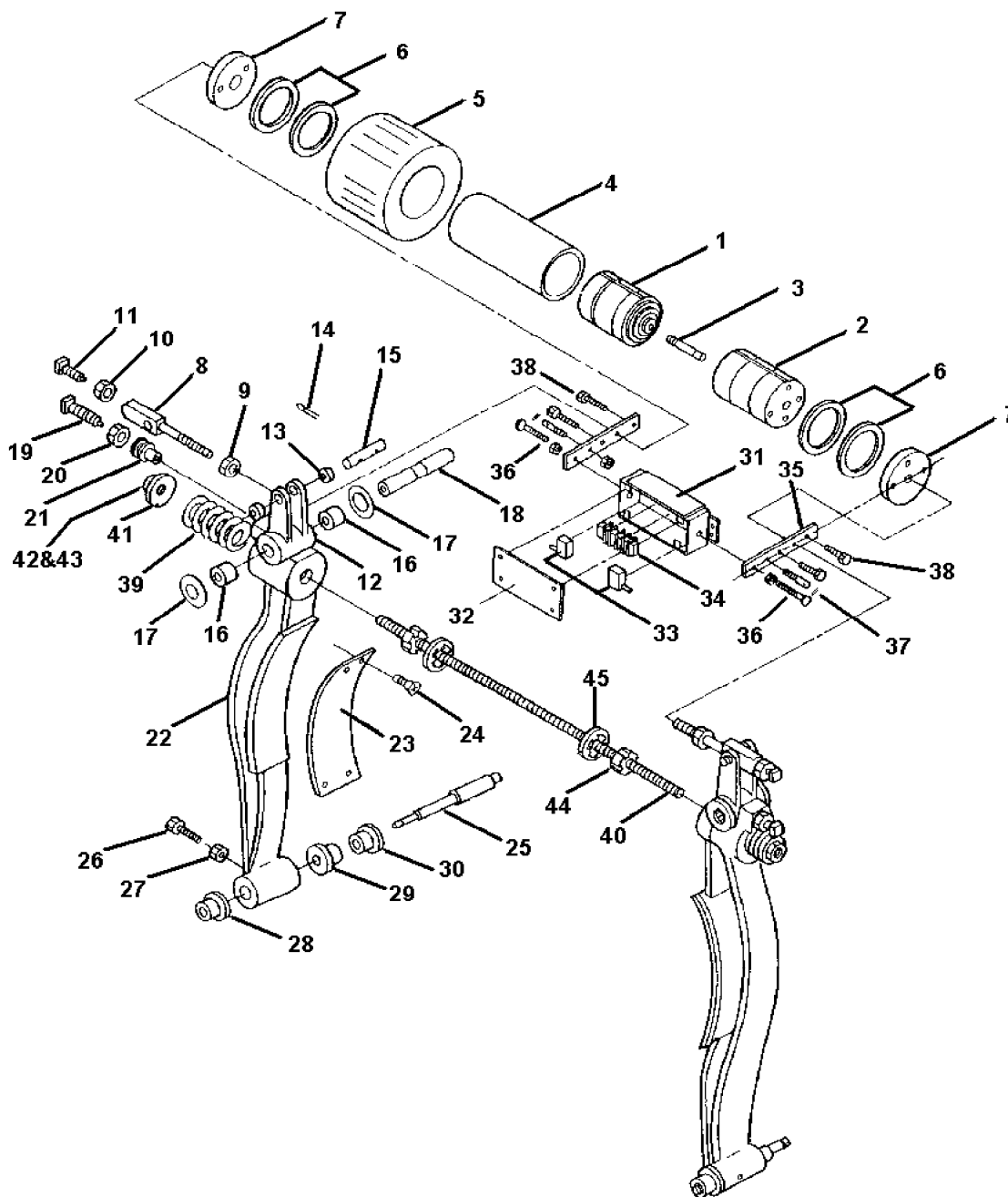


JAA20220AAS		
REF. NO.	PART or ML	DESCRIPTION
1	☞ Page 6	Brake Assembly (Drum Brake)
2	☞ Page 8	Rotor Assembly & Parts
3	JAA24721ABB3	Blower
4	☞ Page 5	PVT Assembly
5	JAA00293AAA001	Bed Plate
6	JBA00303ABZ001	Terminal Assembly
7	AGN	Nipple Grease JIS B1575 C type (1/8)
8	JAA384ALE1	Rope Guard
9	☞ Page 3	Sheave
10	☞ Page 12	Brake Assembly (Hilliard Brake)

Machine Assembly

06-JAA20220AAS

ASSEMBLY NO.	DESCRIPTION			
	PVT Assembly ( Page 10-11 for details)	MOTOR ( Page 8)		
JAA20220AAT	1	JAA21410AAJ004	JAA20220AAM001	35KW
	2	JAA21410AAJ002	JAA00751AAD407	28KW (2.5MPS)
	3		JAA00751AAD408	35KW (3.5MPS)
	4		JAA00751AAD409	40KW (4.0MPS)
	5	JAA21410ABH1	JAA20220AAM001	35kW
	6		JAA00751AAD407	28KW (2.5MPS)
	7		JAA00751AAD408	35KW (3.5MPS)
	8		JAA00751AAD409	40KW (4.0MPS)



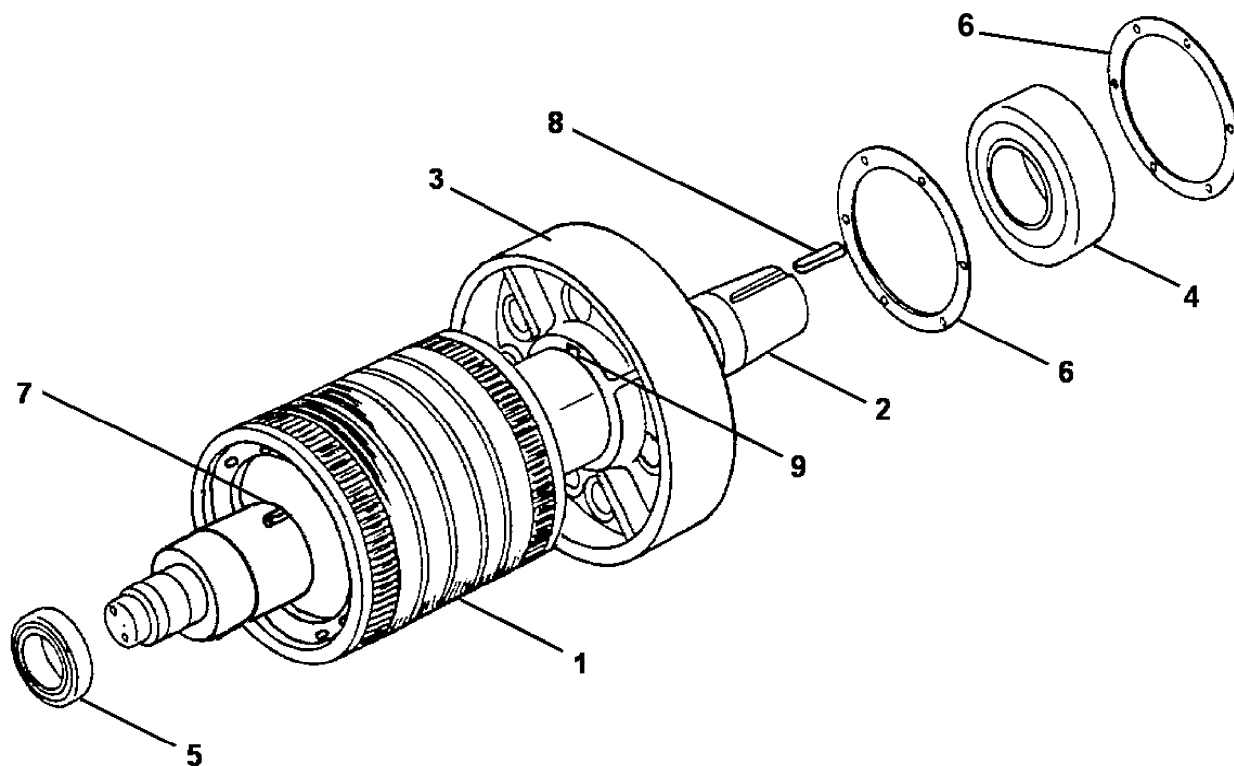
JAA20220AAS

REF. NO.	PART or ML	DESCRIPTION
1	JAA400ABB1	Magnet Core
2&3	JAA400ABA1 (77RG2)	Magnet Core (Integrated with Pin) (Pin)
4	JM136R10	Tube
5	JAA00234AAS001	Magnet Coil
6	128AG53	Washer

Brake Assembly

06-JAA20220AAS

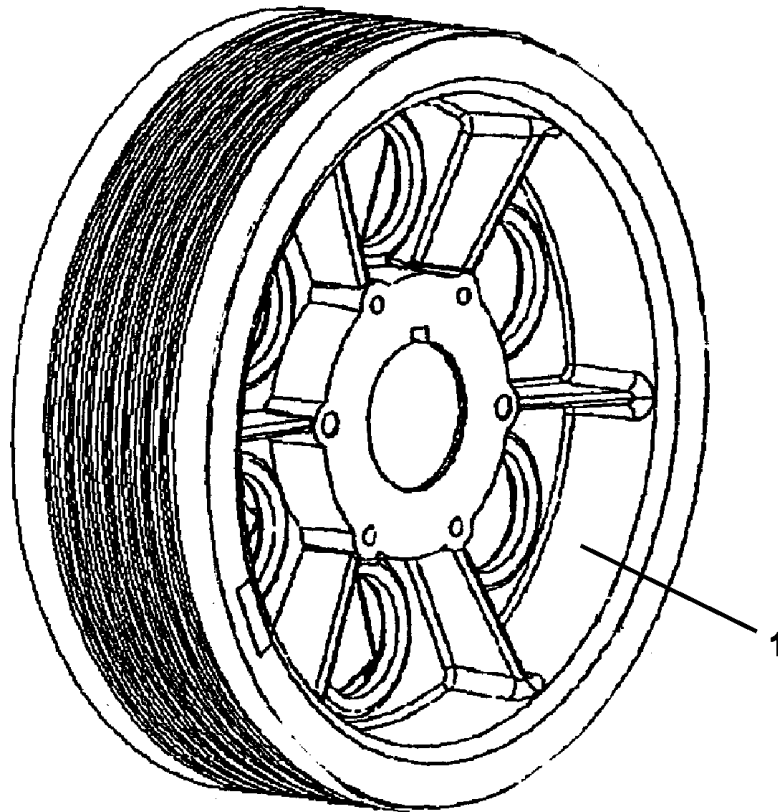
7	JAA346AZV1	Cover
8	JAA65AKW1	Bolt
9	NSM20-H	Hex. Full Nut (M20 P:1.5)
10	JSM20-H	Hex. Jam Nut (M20 P:1.5)
11	BFM20X050-H	Hex. HD. Fin Bolt (M20X50 P:1.5)
12&13	JXB288HX2	Lever with Needle Bearing
	JXB288HX1	Lever
	209A6	Needle Bearing
14	PC3.2X35	Cotter Pin
15	JO82AA3	Pin
16	209A7	Needle Bearing (Assemble to Brake Frame JAA00358AAD002)
17	128AL2	Washer
18	77LG3	Pin
19	BFM20X065-H	Hex. HD. Fin Bolt (M20X65 P:1.5)
20	JSM20-H	Hex. Jam Nut (M20 P:1.5)
21	81BN2	Pin
22-24	JAA286ABD2	Lever with Lining and Rivet
	B416Y1	Lining, Brake
	145C3	Special Flat Head Copper Rivet
	JAA286ABD1	Lever
25	JAA00081AFN001	Pin
26	BFM16X050-FULL	Hex. HD. Fin. Full Bolt
27	JSM16	Hex. Jam Nut
28	JAA335AAJ1	Bushing
29	335H14	Bushing
30	335H14	Bushing
31	JAA308AMM2	Box
32	JAA346AZW1	Cover
33	177Y1	Micro Switch
34	JAA00303ACF001	Board
35	JX288NH6	Lever
36	JAA00124AAA001, JSM12	Screw & Hex. Jam Nut
37	JAA98AKA1 , NSM10 , LWS10 , PC2.5X32	Rod, Hex. Full Nut, Spring Lock Washer & Cotter Pin
38	BFM08X045 , LWS08	Hex. HD. Fin. Bolt & Spring Lock Washer
39	90JD4	Spring
40	JAA98AKV1	Rod
41	ABA133AAB1	Washer
42	NSM24	Hex. Full Nut
43	JSM24	Hex. Jam Nut
44	NSM24	Hex. Full Nut
45	LWS24	Spring Lock Washer



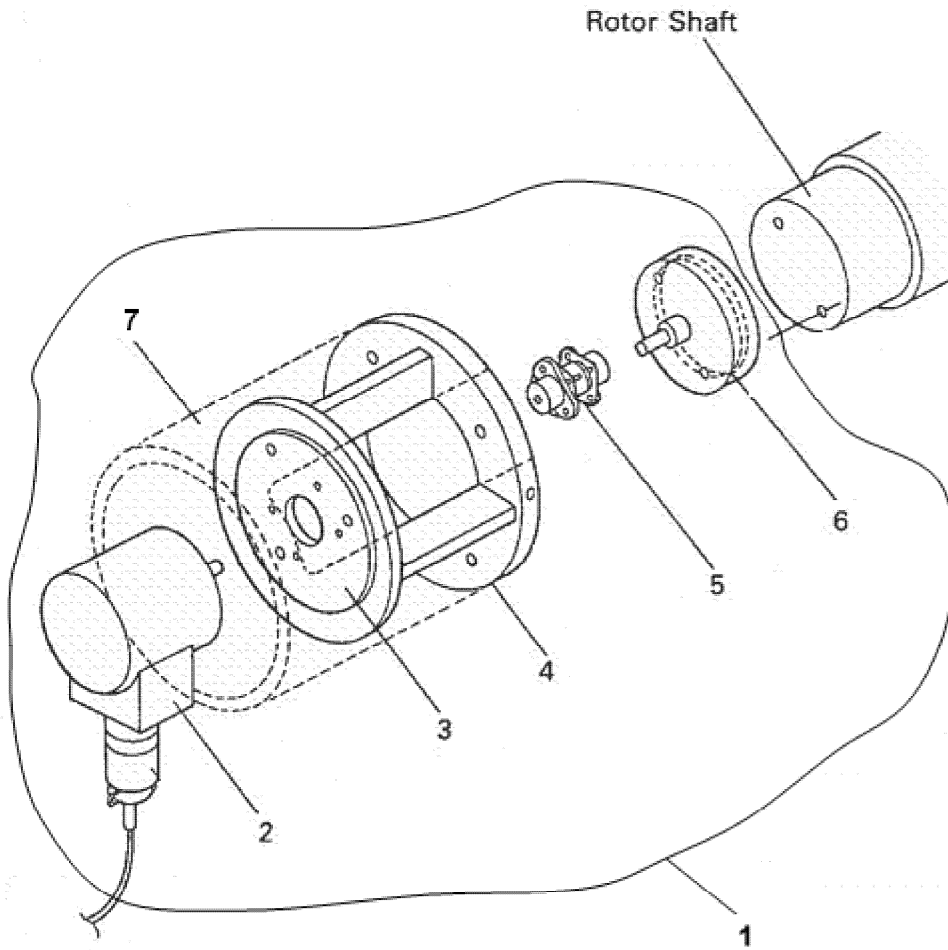
JAA20220AAS		
REF. NO.	PART or ML	DESCRIPTION
1	JAA20220AAM001 / JAA00751AAD407-409	Motor Assembly 👁 Page 5 for motor type.
2	JAA00461AAB002	Shaft
3	198Y1	Brake Pulley
4	209G14	Roller Bearing
5	JAA00207AAA001	Ball Bearing
6	376T16	Gasket
7	JAA00192AAB002	Key
8	JAA00192AAB003	Key
9	192G107	Key

Sheave

06-JAA20220AAS



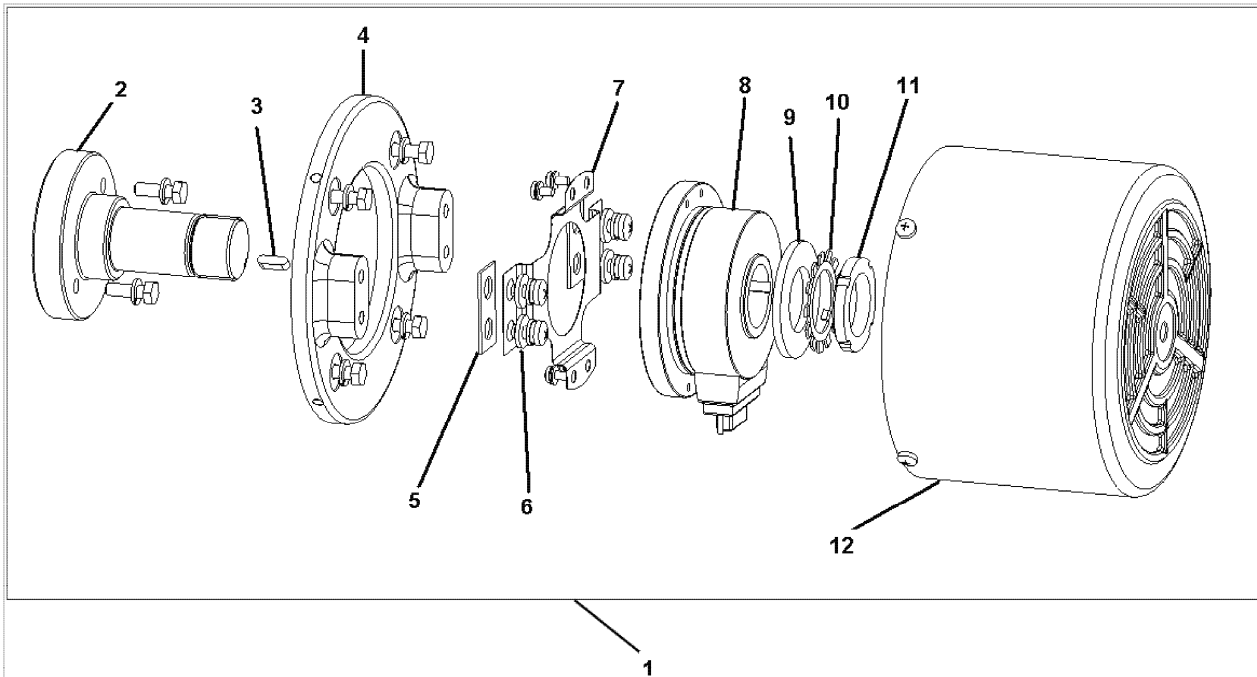
JAA20220AAS				
REF. No.	PART No.	DESCRIPTION	NO. & SIZE	UNDERCUT
1	JAA00261AAB102	Sheave	(7) \varnothing 12.7	90°
	JAA00261AAB106	Sheave	(8) \varnothing 12.7	



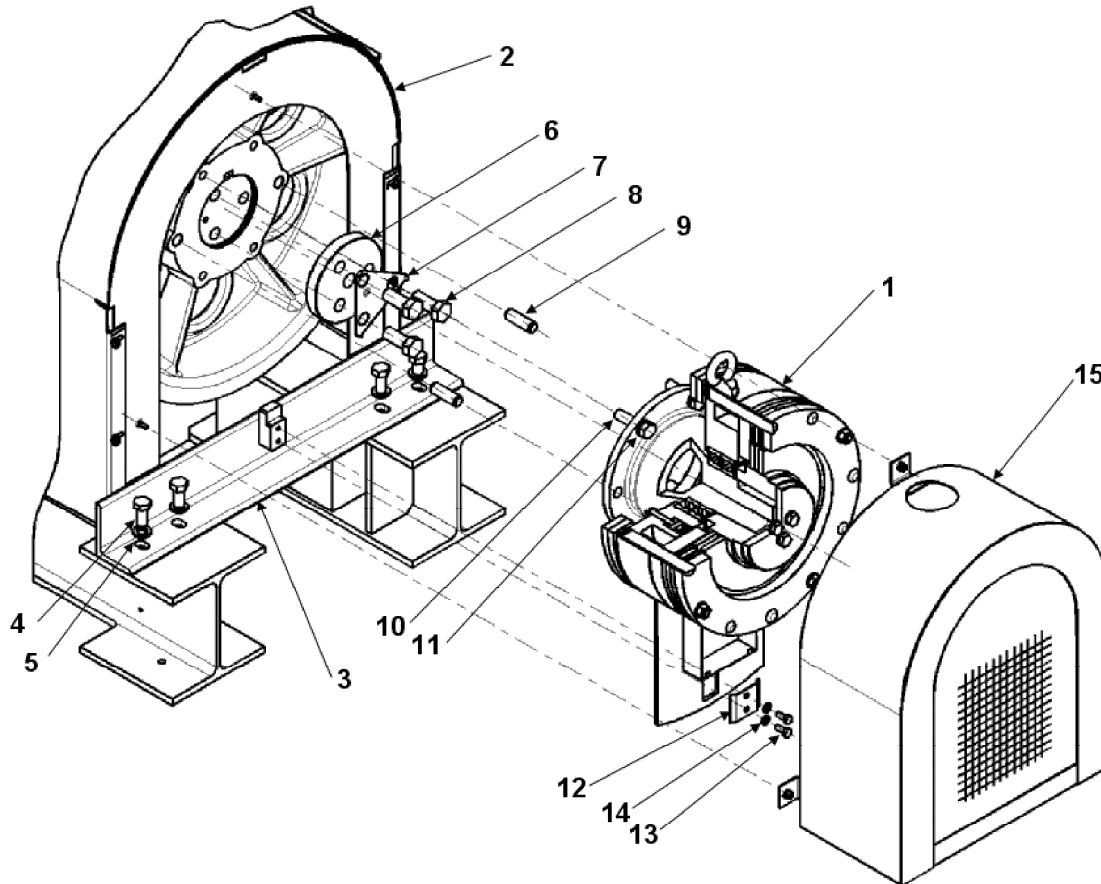
JAA20220AAS			
1-2		3-8	
REF. NO.	PART or ML		DESCRIPTION
1	JAA21410AAJ004	JAA21410AAJ002	PVT Ass'y
2	AAA659C1	-	Encoder
3	JAA00462AES001	-	Spacer
4	JAA00316AAZ001		Stand
5	215BN7	-	Coupling
6	JAA00081AAJ002		Drive Pin
7	JBA00285AAF003	JBA00285AAF002	Cover

PVT Assembly

06-JAA20220AAS



JAA20220AAS9-16		
REF. NO.	PART or ML	DESCRIPTION
1	JAA21410ABH1	PVT Ass'y
2	JAA494AED1	Shaft
3	192BA5	Key
4	JAA462AMF1	Spacer
5	JAA129ABF1	Insulator
6	JAA129ABG1	Insulator
7	JAA00316DBF001	Bracket
8	AAA633W1	Encoder
9	RWS30-UC	M30 Plain Washer (Ep-Fe/Zn 5/CM 1)
10	BWT30	AW06 Bearing Washer (Keyed Washer)
11	BNM30X1.5	M30X1.5 Bearing Nut
12	JAA285AYH1	Cover



JAA20220AAS

REF. NO.	PART or ML	DESCRIPTION
1	AAA20016C2	Brake
2	JAA384ALE1	Rope Guard
3	JAA283EAW2	Angle, Formed
4	BFM16X035-8.8	M16X35 Hex HD Fin Bolt (Class 8.8)
5	LWS16	M16 Hex Full Nut
6	JAA127ABN1	Washer
7	JAA00131AAA001	Washer
8	BFM20X50	M20X50 Hex HD Fin Bolt
9	AAA81MU1	Pin
10	BFM16X060-10.9	M16X60 Hex HD Fin Bolt (Class 10.9)
11	LWS16	M16 Spring Lock Washer
12	AAA339NX1	Clip
13	BFM08X020-8.8	M8X20 Hex HD Fin Bolt (Class 8.8)
14	LWS08	M8 Spring Lock Washer
15	JAA346BEJ1	Cover, Formed