

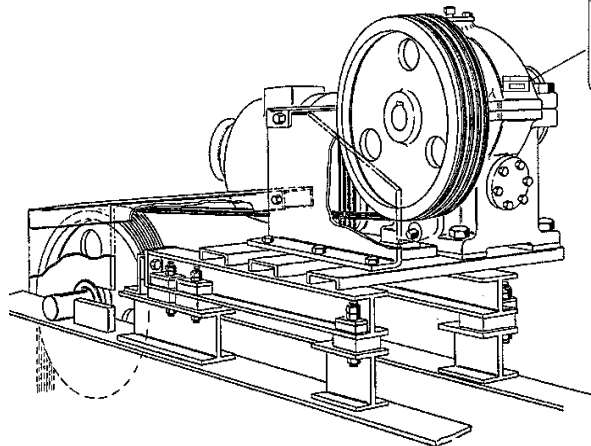
# SPL 06-JX7078BA - 17CT Machine

Unpublished Work - © Otis Elevator Company. Any unauthorized reproduction, disclosure, or distribution of copies or content by any person of any portion of this work may be a violation of Copyright Law of the United States of America. All rights reserved.

September 1997

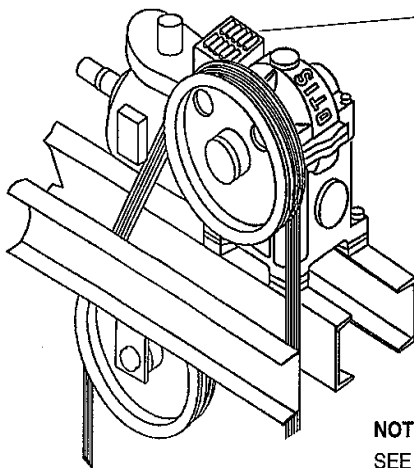
Page 1

## NIPPON FACTORY PRODUCTION



|                      |          |   |    |
|----------------------|----------|---|----|
| 06                   | JX7078BA |   |    |
| J                    | VINTAGE  | J | 01 |
| <input type="text"/> |          |   |    |

## LIVERPOOL FACTORY PRODUCTION



|                      |            |   |    |
|----------------------|------------|---|----|
| 06                   | LXJX7078BA |   |    |
| L                    | VINTAGE    | L | 01 |
| <input type="text"/> |            |   |    |

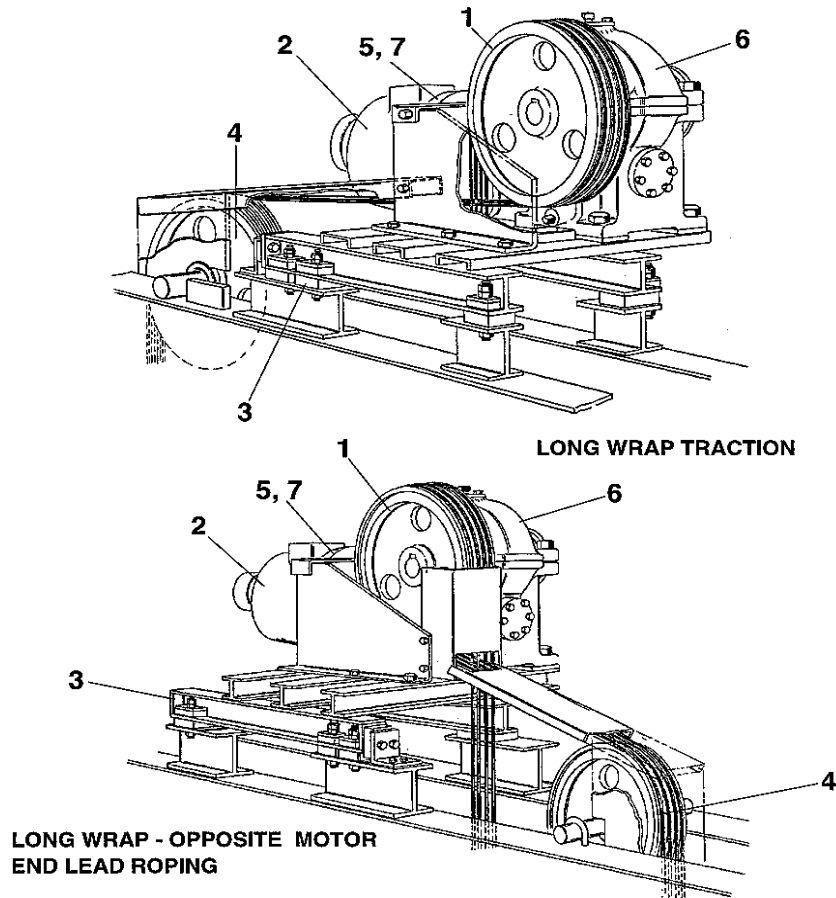
OR

TYPE 7078BA  
SERIAL NO  30H  
**OTIS**

**NOTE:** FOR ETO INSTALLATIONS  
SEE LIVERPOOL LEAFLET 06-LXJX 7078BA

## SPL 06-JX7078BA - 17CT Machine

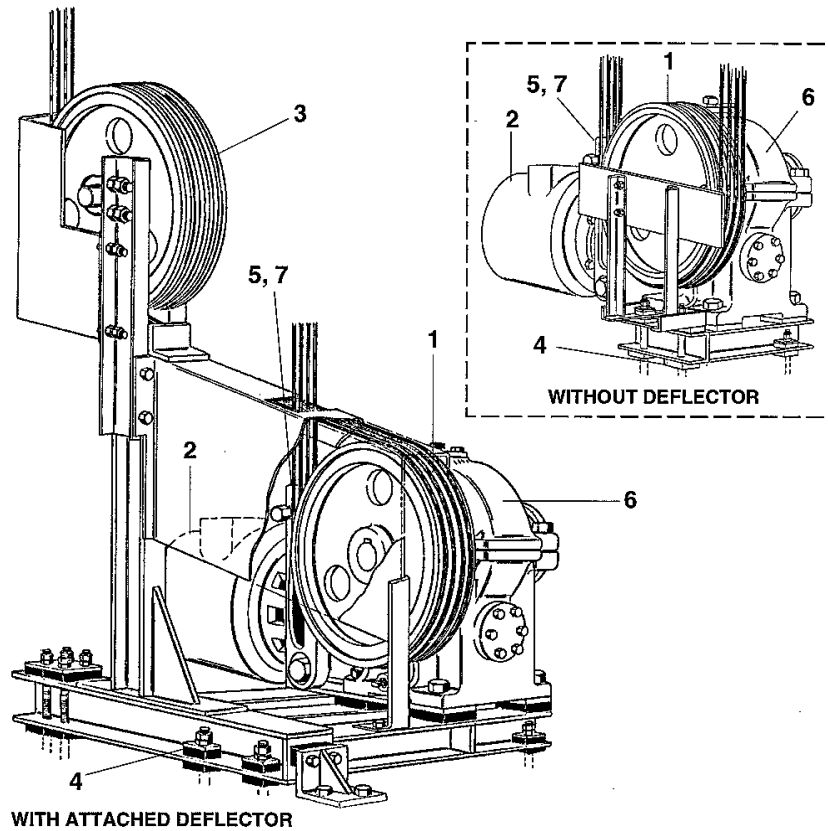
Page 2 - Table of Contents for 17CT Machine w/ DC Motor & Relay Control (machine above)



| Ref. No. | Part or ML                          | Description                                      |
|----------|-------------------------------------|--|
| 1        | Page 15                             | Type 260CH2 Drive Sheave                         |
| 2        | SPLs 08-6333CK-IMP and 08-6333CK-LS | Types 6333CK, 6333CL, and 6333CM Motor, DC       |
| 3        | Page 17                             | Sound Isolation Equipment                        |
| 4        | Page 16                             | Type 7078BP1 Deflector Assembly                  |
| 5        | Page 13                             | Type 7078DN1 Brake Switch Assembly               |
| 6        | Pages 9 - 12                        | Type JX7078BA Machine, right hand                |
| 7        | Pages 13 - 14                       | Type JY7078BB1 Brake Assembly and Brake Coupling |

## SPL 06-JX7078BA - 17CT Machine

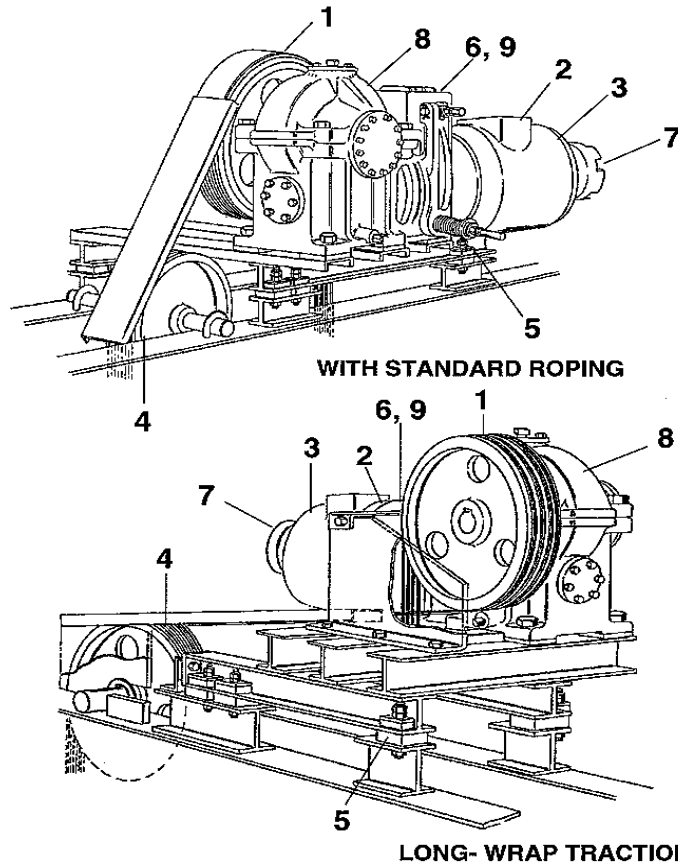
Page 3 - Table of Contents for 17CT Machine w/ DC Motor & Relay Control (machine below)



| Ref. No. | Part or ML                          | Description                                      |
|----------|-------------------------------------|--|
| 1        | Page 15                             | Type 260CH2, 260CH3 Drive Sheave                 |
| 2        | SPLs 08-6333CK-IMP and 08-6333CK-LS | Types 6333CK, 6333CL, and 6333CM Motor, DC       |
| 3        | Page 16                             | Type 7078BP2 Deflector Assembly                  |
| 4        | Page 17                             | Sound Isolation Equipment                        |
| 5        | Page 13                             | Type 7078DN1 Brake Switch Assembly               |
| 6        | Pages 9 - 12                        | Type JX7078BA Machine, Right Hand                |
| 7        | Pages 13 - 14                       | Type JY7078BB1 Brake Assembly and Brake Coupling |

**SPL 06-JX7078BA - 17CT Machine**

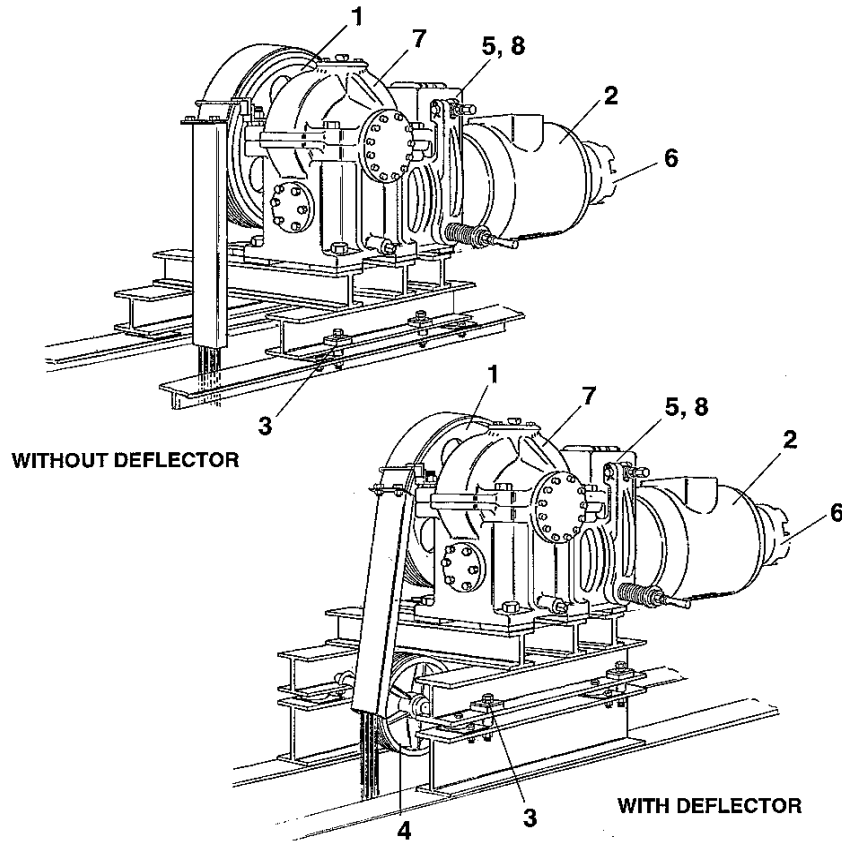
**Page 4 - Table of Contents for 17CT Machine w/ AC Motor & Gamma 160 Control (machine above)**



| W/O Vintage, Vintage J01, Vintage L01 |               |   |
|---------------------------------------|---------------|---|
| Ref. No.                              | Part or ML    | Description   |
| 1                                     | Page 15       | Type 260CA2, 260CA4, 260CA6, and 260CA8 Drive Sheave  |
| 2                                     | SPL 08-6333CE | Type 2040C Sensor                                     |
| 3                                     | SPL 08-6333CE | Types 6333CE1, 6333CE2, and 6333CE3 Motor, AC         |
| 4                                     | Page 16       | Type 7078BK1, 7078BK4, and 7078BK5 Deflector Assembly |
| 5                                     | Page 17       | Sound Isolation Equipment                             |
| 6                                     | Page 13       | Type 7078DN1 Brake Switch Assembly                    |
| 7                                     | SPL 08-6333CE | Type 9708G Tachometer Generator                       |
| 8                                     | Pages 9 - 12  | Type JX7078BA Machine, Right Hand                     |
| 9                                     | Pages 13 - 14 | Type JY7078BB1 Brake Assembly and Brake Coupling      |

## SPL 06-JX7078BA - 17CT Machine

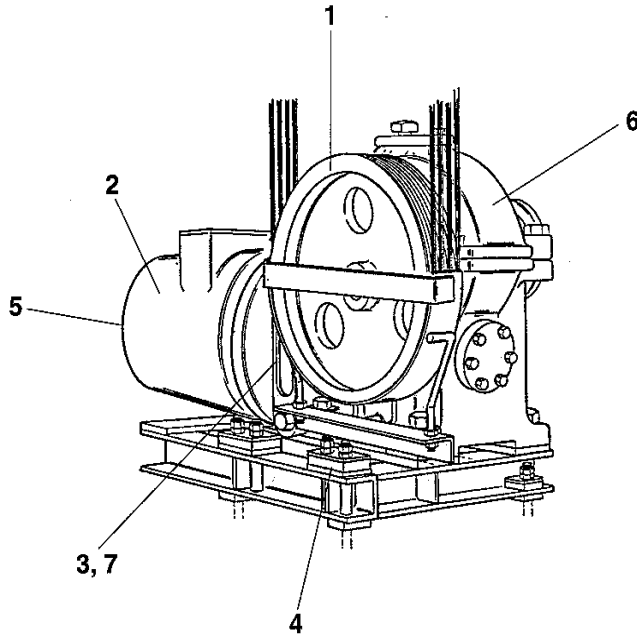
### Page 5 - Table of Contents for 17CT Machine w/ AC Motor & VF Control (machine above)



| Ref. No. | Part or ML     | Description  |
|----------|----------------|--|
| 1        | Page 15        | Type 260CP1, 260CP2, and 260CP3 Drive Sheave                           |
| 2        | SPL 08-A6333DY | Type A6333DY1, A6333DY2, A6333DY3, 6333DY1, 6333DY2, 6333DY3 Motor, AC |
| 3        | Page 17        | Sound Isolation Equipment  |
| 4        | Page 16        | Type 7078DM2 and 7078DM3 Deflector Assembly (when used)                |
| 5        | Page 13        | Type 7078DN1 Brake Switch Assembly                                     |
| 6        | SPL 08-6333DY  | Type 10260F3 Velocity Transducer                                       |
| 7        | Pages 9 -12    | Type JX7078BA Machine, Right Hand                                      |
| 8        | Page 13 -14    | Type JY7078BB2 Brake Assembly and Brake Coupling                       |

**SPL 06-JX7078BA - 17CT Machine**

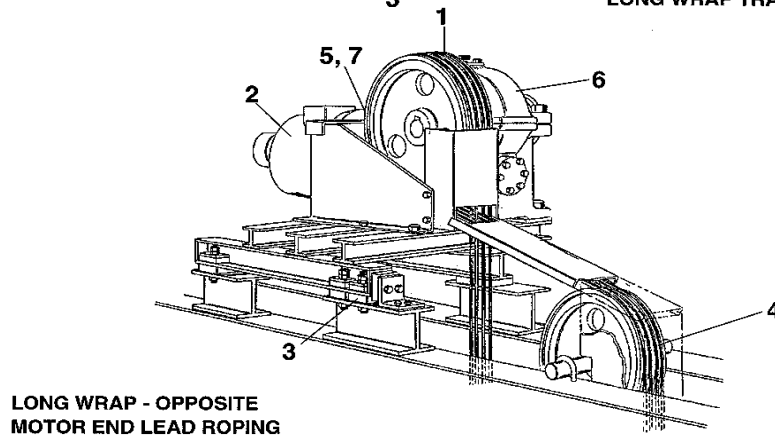
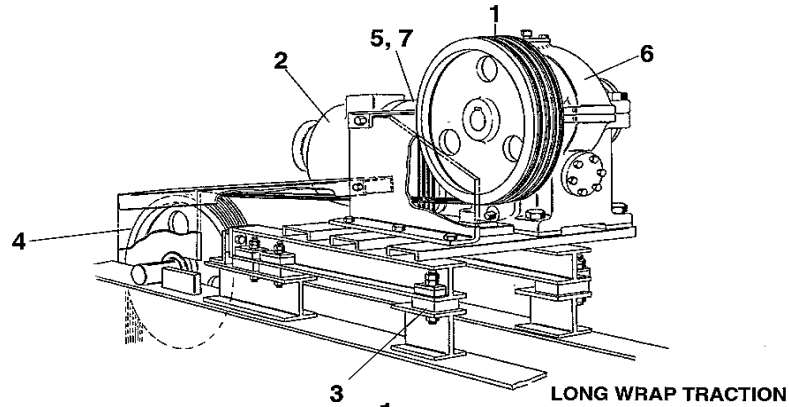
**Page 6 - Table of Contents for 17CT Machine w/ AC Motor & VF Control (machine below)**



| <b>Ref. No.</b> | <b>Part or ML</b> | <b>Description</b>   |
|-----------------|-------------------|--|
| 1               | Page 15           | Type 260CP1, 260CP2, and 260CP3 Drive Sheave                           |
| 2               | SPL 08-A6333DY    | Type A6333DY1, A6333DY2, A6333DY3, 6333DY1, 6333DY2, 6333DY3 Motor, AC |
| 3               | Page 13           | Type 7078DN1 Brake Switch Assembly                                     |
| 4               | Page 17           | Sound Isolation Equipment  |
| 5               | SPL 08-6333DY     | Type 10260F3 Velocity Transducer                                       |
| 6               | Pages 9 -12       | Type JX7078BA Machine, Right Hand                                      |
| 7               | Pages 13 -14      | Type JY7078BB2 Brake Assembly & Brake Coupling                         |

## SPL 06-JX7078BA - 17CT Machine

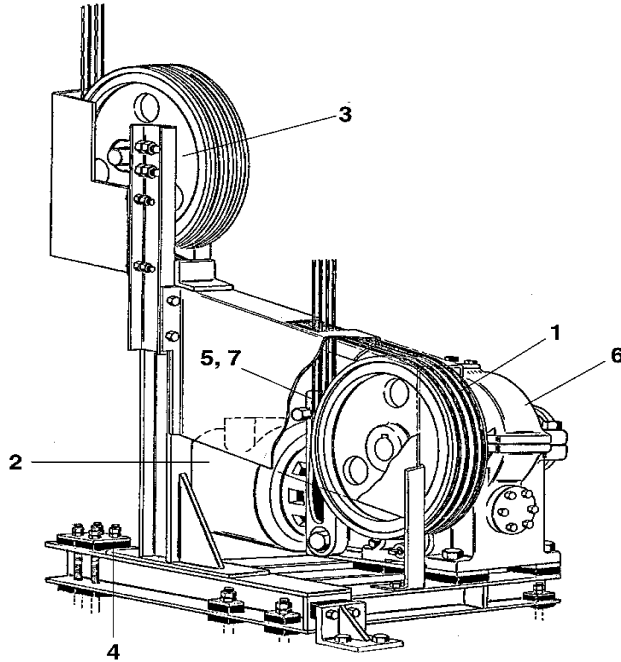
Page 7 - Table of Contents for 17CT Machine w/ DC Motor & Elevonic Control (machine above)



| Ref. No. | Part or ML        | Description                                      |
|----------|-------------------|--|
| 1        | Page 15           | Type 260CH2 Drive Sheave                         |
| 2        | SPL 08-6333CK-IMP | Type 6333DS and 6333DM Motor, DC                 |
| 3        | Page 17           | Sound Isolation Equipment                        |
| 4        | Page 16           | Type 7078BP1 Deflector Assembly                  |
| 5        | Page 13           | Type 7078DN1 Brake Switch Assembly               |
| 6        | Pages 9 -12       | Type JX7078BA Machine, Right Hand                |
| 7        | Pages 13 -14      | Type JY7078BB2 Brake Assembly and Brake Coupling |

SPL 06-JX7078BA - 17CT Machine

Page 8 - Table of Contents for 17CT Machine w/ DC Motor & Elevonic Control (machine below)



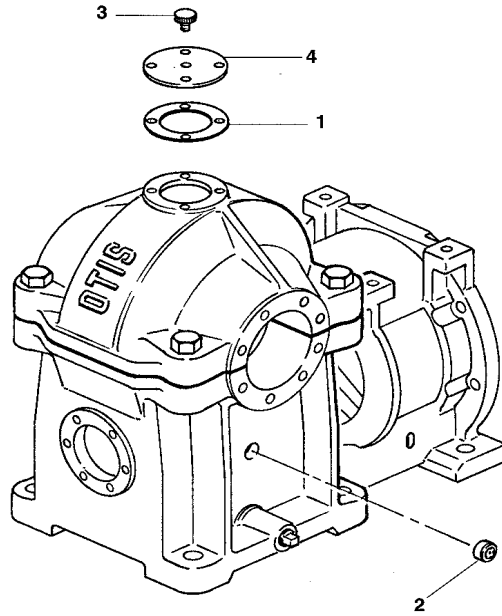
WITH ATTACHED DEFLECTOR

| Ref. No. | Part or ML        | Description                                      |
|----------|-------------------|--|
| 1        | Page 15           | Type 260CH2, 260CH3 Drive Sheave                 |
| 2        | SPL 08-6333CK-IMP | Type 6333DS and 6333DM Motor, DC                 |
| 3        | Page 16           | Type 7078BP2 Deflector Assembly                  |
| 4        | Page 17           | Sound Isolation Equipment                        |
| 5        | Page 13           | Type 7078DN1 Brake Switch Assembly               |
| 6        | Pages 9 -12       | Type JX7078BA Machine, Right Hand                |
| 7        | Pages 13 -14      | Type JY7078BB2 Brake Assembly and Brake Coupling |



SPL 06-JX7078BA - 17CT Machine

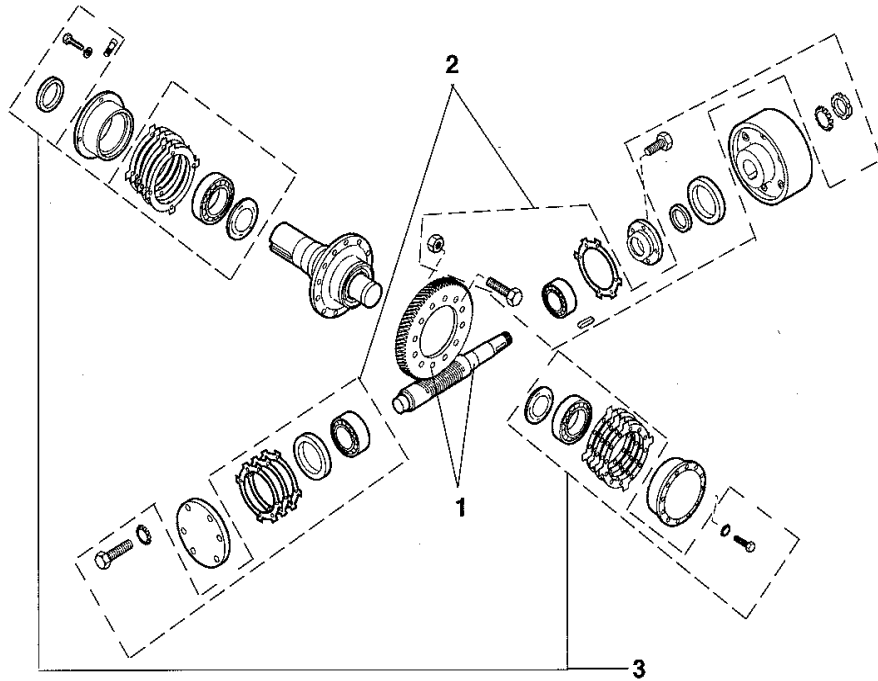
Page 9 - Upper & Lower Gear Case - Spare Parts



| Ref. No. | Part or ML                  |             | Description                    |
|----------|-----------------------------|-------------|--------------------------------|
|          | W/O Vintage,<br>Vintage J01 | Vintage L01 |                                |
| 1        | JO376AE4<br>JAA00376AAC1    |             | Gasket                         |
| 2        | JO719A1                     | LO444AE1    | Gauge, Oil                     |
| 3        | JX435AT1                    |             | Ventilator, Air                |
| 4        | AAA346AWH7                  |             | Clear Plastic Inspection Cover |
|          | JX353CA2                    |             | Steel Inspection Cover         |

SPL 06-JX7078BA - 17CT Machine

Page 10 - Worm and Gear Parts



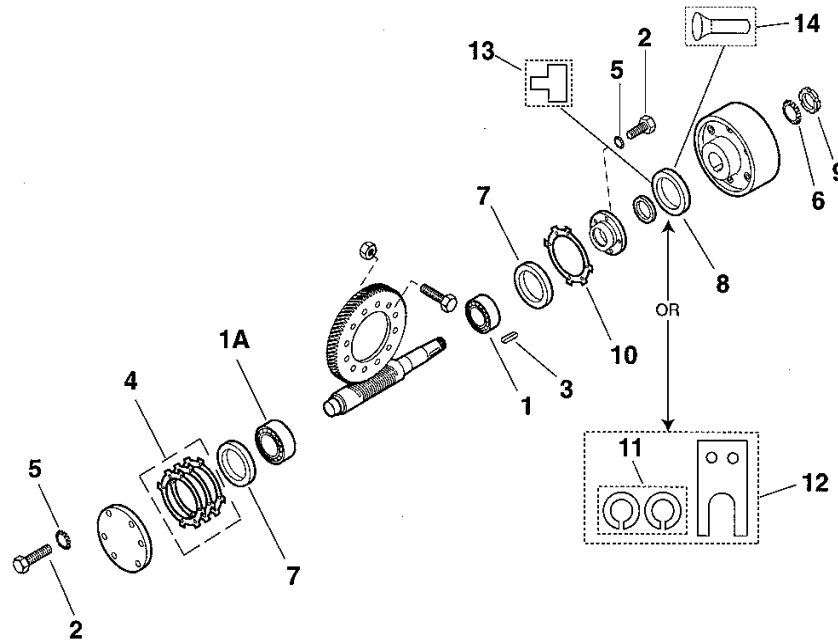
**NOTE:** Worm shaft sundries kit 2700AAR1 or 2700AAR2 required with worm & gear change-out. Sheave shaft sundries also recommended.

See also TIP 6.2.2-9.

| Ref. No. | W/O Vintage, Vintage J01, Vintage L01<br>Part or ML | Part  | Description |                  |                       |
|----------|---|---|-------------|------------------|-----------------------|
|          |   |   | Gear Ratio  | Gear; # of Teeth | Worm; # of RH Threads |
| 1A       | 490HM7 / JX200BR7                                   | Worm Gear & Hardened Worm Shaft   | 30:1        | 60               | 2                     |
|          | 490HM6 / JX200BR6                                   |   | 25:1        | 75               | 3                     |
| 1B       | 490HN7 / JX200BR7                                   | Worm Gear & Unhardened Worm Shaft   | 30:1        | 60               | 2                     |
|          | 490HN3 / JX200BR3                                   |   | 15:1        | 75               | 5                     |
|          | 490HN6 / JX200BR6                                   |   | 25:1        | 75               | 3                     |
| 1C       | 2700AAR8  | Kit, 75-Tooth CAVEX Worm Gear, Hardened CAVEX Worm Shaft & Supporting Parts, 25:1 Ratio                                     |             |                  |                       |
| 2        | 2700AAR1  | Kit, Worm Shaft Bearing & Gear Bolts (consists of bearings, gasket, seals, gear bolts, and hardware)                        |             |                  |                       |
|          | 2700AAR2  | Kit, Worm Shaft Bearing & Gear Bolts for CAVEX 17CT Machine (consists of bearings, gasket, seals, gear bolts, and hardware) |             |                  |                       |
| 3        | See page 12, ref. 15                                | Kit, Sheave Shaft Sundries  |             |                  |                       |

# SPL 06-JX7078BA - 17CT Machine

## Page 11 - Worm Shaft Parts

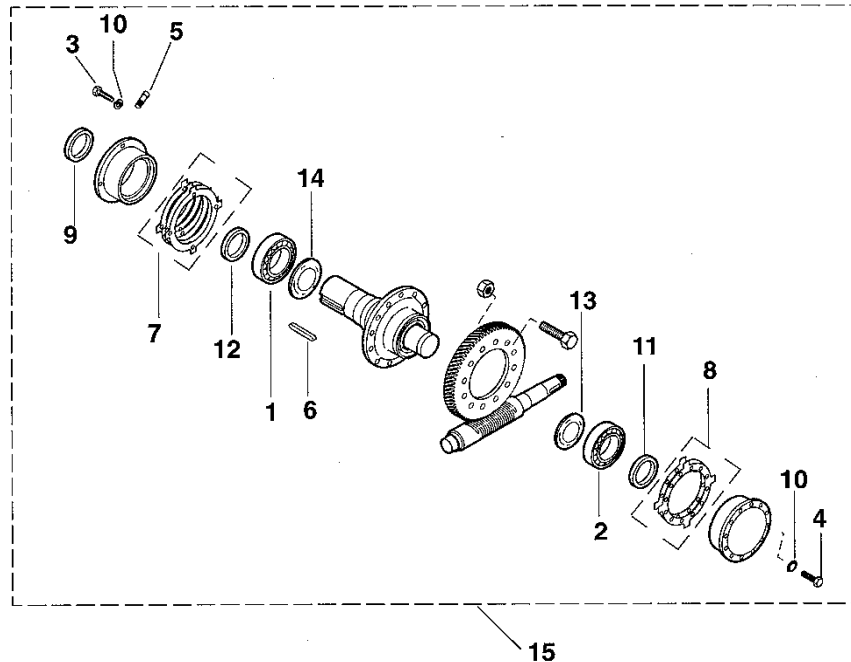


See also TIP 6.2.2-9

| Ref. No. | Part or ML   | Description   |                         |
|----------|--|---|-------------------------|
|          | <b>W/O Vintage,<br/>Vintage J01, &amp;<br/>Vintage L01</b> |   |                         |
| 1        | 209B38   | Bearing, Roller, ID 1.968 in.                             |                         |
| 1A       | 209B38   | Bearing, Roller, ID 1.968 in.                             |                         |
|          | 1F-209B1   | Bearing, Roller (CAVEX only), ID 1.771 in.                |                         |
| 2        | DIN931 M12x50  | Bolt, Hex Head, M12x50                                    |                         |
| 3        | JO192J2  | Key   |                         |
| 4        | 2700CAB6   | Kit, Shims - Total thickness of shims to be 2.05 +/- 5 mm |                         |
| 5        | DIN127 A12   | Lockwasher, Spring, A12                                   |                         |
| 6        | 130AT5   | Lockwasher, Type MB                                       |                         |
| 7        | JAA00172AAC1   | O-Ring  |                         |
| 8        | JAA00033AAA1   | Seal, Oil   |                         |
| 9        | 72FJ5  | Shaft Nut, Type SKF, M45x1.5                              |                         |
| 10       | JO255GT14  | Shim, 0.188 mm thick                                      |                         |
| 11       | AAA33AQ2   | Seal, Split Oil   | See also<br>TIP 6.2.0-3 |
| 12       | AAA33AQ1   | Kit, Split Seal   |                         |
| 13       | AAA396NQ1  | Seal Extension Housing                                    |                         |
| 14       | AAA465CT1  | Wear Sleeve   |                         |

SPL 06-JX7078BA - 17CT Machine

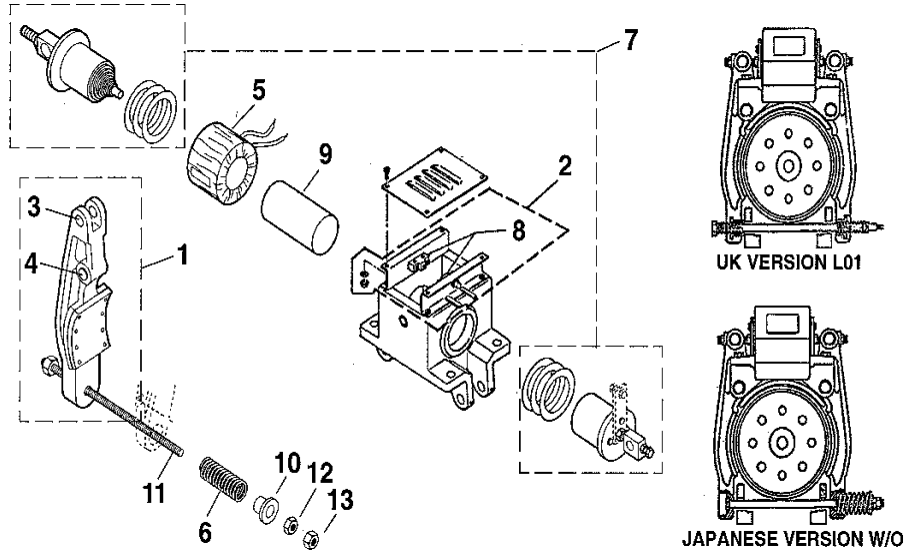
Page 12 - Sheave Shaft Parts



| Ref. No. | W/O Vintage & J01 | Vintage L01 | Description  |
|----------|-------------------|-------------|--|
| 1        | 209B36            |             | Bearing, Drive Shaft                                     |
| 2        | 209B37            |             |  |
| 3        | DIN931 M16x65mm   |             | Bolt, Hex Head, M16 x 65 mm                              |
| 4        | DIN931 M16x55mm   |             | Bolt, Hex Head, M16 x 55 mm                              |
| 5        | 435C3             |             | Fitting  |
| 6        | JO192J1           |             | Key  |
| 7        | 2700CAB7          |             | Kit, Shims - Total Thickness of Shims to be 0.9 - 2.3 mm |
| 8        | 2700CAB8          |             |  |
| 9        | JAA00033AAB1      |             | Oil Seal, Sheave Shaft 120.0 mm OD                       |
|          |                   | 1F-33E1     | Oil Seal, Sheave Shaft 120.65 mm OD                      |
| 10       | DIN127 M16        |             | Lockwasher, Spring M16                                   |
| 11       | JAA00172AAC2      |             | O-Ring   |
| 12       | JAA00172AAC3      |             |  |
| 13       | AJY172RL1         |             | Ring, Bearing Cover                                      |
| 14       | AJY172RL2         |             |  |
| 15       | 2700AAR9          |             | Kit, Sheave Shaft Sundries for 17CT Machine              |

SPL 06-JX7078BA - 17CT Machine

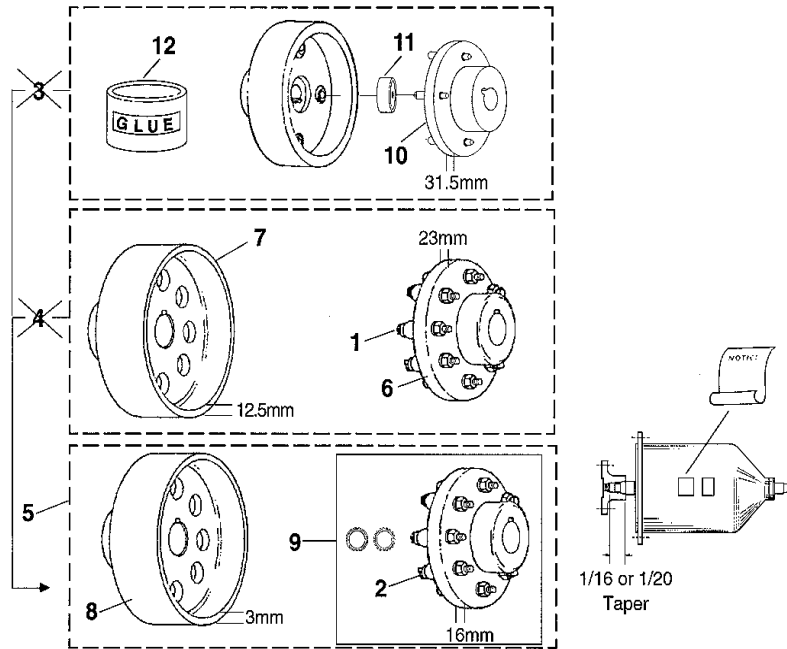
Page 13 - JY7078BB & LXJY7078BB Brake Assembly w/ 7078DN1 Brake Switch Assembly



| Ref. No. | Part or ML   | Description   |
|----------|--|---|
| 1        | W/O Vintage & J01<br>Vintage L01<br>JY286BF503<br>ALXJY286BF503<br>BLXJY286BF503 | Assembly, Brake Lever w/ Lining & Bearings  |
| 2        | LY7078DN4<br>7078DN1   | Assembly, Brake Switch  |
| 3        | 209A6  | Bearing   |
| 4        | JX335E503<br>209A3   | Bearing   |
| 5        | JY222FP2   | Magnet Coil, 80 Volts   |
|          | <del>LX222FP4</del><br>LX222FP2  | Magnet Coil, 100 Volts  |
| 6        | 90XC10   | Spring for use w/ JY7078BB1 Brake Assembly, Free Length 5 in., Wire diameter 0.250 in.      |
|          | 90ZC3  | Spring for use w/ JY7078BB2 Brake Assembly, Free Length 5.125 in., Wire diameter 0.2812 in. |
| 7        | 2700CAB22  | Kit, Male and Female Brake Magnet Core w/ Shims   |
| 8        | 177Y1  | Switch  |
| 9        | 136R15   | Tube, Magnet Core   |
| 10       | 133AH1   | Washer  |
| 11       | JY65EP1  | Bolt  |
| 12       | DIN934 M16   | Nut, M16  |
| 13       | DIN439 M16   | Nut, Jam, M16   |

## SPL 06-JX7078BA - 17CT Machine

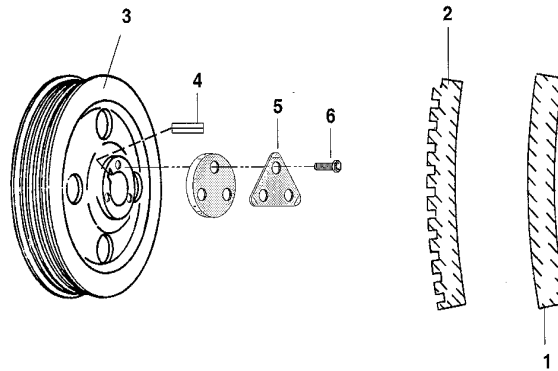
### Page 14 - Types JY7078BC, JO7078Y1, JO7078Y2, & JO7078AA2 Brake Coupling Assembly & Coupling Halves



| Ref. No. | Part or ML           | Description   |
|----------|----------------------|---|
| 1        | JO65CB4              | Bolt, Coupling, w/ Rubber Bushing, 20 x 85 mm (8 req'd)                               |
| 2        | JO65CB3 or LYJO65CB3 | Bolt, Coupling, w/ Rubber Bushing, 14 x 64 mm (8 req'd)                               |
| 3        | JY7078BC1            | Brake Coupling Assembly w/ 4 pins   |
| 4        | JO7078AA2            | Brake Coupling Assembly w/ 8 bolts  |
| 5        | JO7078Y2             |   |
| 6        | JO215P4              | Coupling, Male, w/ 8 bolts  |
| 7        | JO215J1              | Coupling, Female, w/ 8 holes & 12.5 mm lip  |
| 8        | JO215G1              | Coupling, Female, w/ 8 holes & 3 mm lip   |
| 9        | 2700CAB25            | Kit, Male Coupling Assembly w/ 16 mm lip & 1/16 Taper for All Motors                  |
|          | 2700CAB24            | Kit, Male Coupling Assembly w/ 16 mm lip and 1/20 Taper for 6333DY Motors, see Notice |
| 10       | 78FA42               | Pin, 3.5 in. Long (4 req'd)   |
| 11       | 321CJ4               | Bushing, 19 mm ID x 37.46 mm OD (4 req'd)   |
| 12       | VP-700400            | Adhesive for 321CJ Brake Bushings   |

## SPL 06-JX7078BA - 17CT Machine

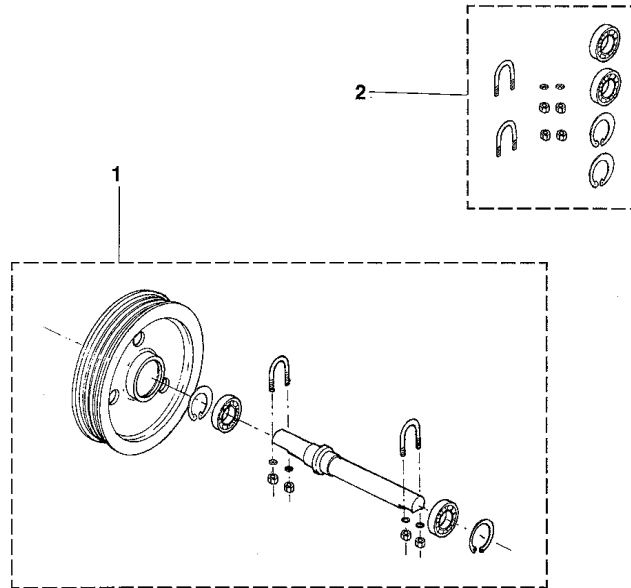
### Page 15 - Drive Sheave Parts



| Ref. No. | Part or ML    | Description   |
|----------|---------------|---|
| 1        | 251BT14       | Insert, Smooth for Use w/ 260CA1 Drive Sheave, 24 in. OD, 1/2 in. Ropes                           |
|          | 251CE8        | Insert, Smooth for Use w/ 260CH1 Drive Sheave, 26 in. OD, 5/8 in. Ropes                           |
| 2        | 251BT17       | Insert, Smooth for Use w/ 260CA3 Drive Sheave, 21 in. OD, 1/2 in. Ropes                           |
|          | B251BT18      | Insert, Treaded for Use w/ 260CA5 & 260CA7 Drive Sheaves, 21 in. OD, 1/2 in. Ropes                |
|          | B251BV9       | Insert, Treaded for Use w/ 260CH1 Drive Sheave, 26 in. OD, (4) 5/8 in. Ropes                      |
| 3        | 260CA3        | Drive Sheave, 21 in. OD, (4) 1/2 in. Ropes Used w/ 251BT17 Smooth Insert                          |
|          | 260CA5        | Drive Sheave, 21 in. OD, (4, 5) 1/2 in. Ropes Used w/ B251BT18 Treaded Insert                     |
|          | 260CA7        | Drive Sheave, 21 in. OD, (6) 1/2 in. Ropes Used w/ B251BT18 Treaded Insert                        |
|          | 260CA1        | Drive Sheave, 24 in. OD, (4) 1/2 in. Ropes Used w/ 251BT14 Smooth Insert                          |
|          | 260CH1        | Drive Sheave, 26 in. OD, (4) 5/8 in. Ropes Used w/ 251CE8 Smooth Insert or B251BV9 Treaded Insert |
|          | 260CP2        | Drive Sheave, 29.5 in. OD, (5) 1/2 in. Ropes, 105 degree Undercut                                 |
|          | 260CP3        | Drive Sheave, 29.5 in. OD, (6) 1/2 in. Ropes, 105 degree Undercut                                 |
|          | 260CP1        | Drive Sheave, 29.5 in. OD, (4) 1/2 in. Ropes, 105 degree Undercut                                 |
| 4        |               | Key, see page 12  |
| 5        | JO130H1       | Washer  |
| 6        | DIN933 M16x55 | Bolt, M16 x 55 mm   |

SPL 06-JX7078BA - 17CT Machine

Page 16 - Deflector Sheave Assembly

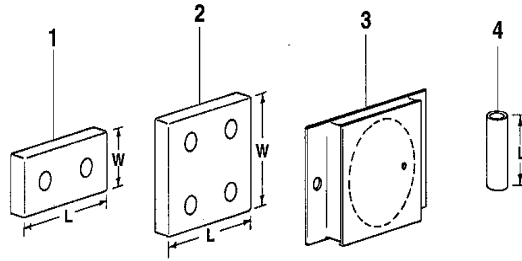


| Ref. No. | Part or ML | Description  |
|----------|------------|--|
| 1        | 2700CAB30  | Deflector Sheave Kit, Type 7078BK1, 21 in. OD, (4) 1/2 in. Ropes                             |
|          | 2700CAB31  | Deflector Sheave Kit, Type 7078BK4, 21 in. OD, (5) 1/2 in. Ropes                             |
|          | 2700CAB32  | Deflector Sheave Kit, Type 7078BK5, 21 in. OD, (6) 1/2 in. Ropes                             |
|          | 2700CAB28  | Deflector Sheave Kit, Type 7078BP1, 25 in. OD, (4) 5/8 in. Ropes w/ 23.5 in. Deflector Shaft |
|          | 2700CAB29  | Deflector Sheave Kit, Type 7078BP2, 25 in. OD, (4) 5/8 in. Ropes w/ 13 in. Deflector Shaft   |
|          | 2700CAB26  | Deflector Sheave Kit, Type 7078DM2, 21 in. OD, (5) 1/2 in. Ropes                             |
|          | 2700CAB27  | Deflector Sheave Kit, Type 7078DM3, 21 in. OD, (6) 1/2 in. Ropes                             |
| 2        | 2700CAB11  | Bearings & Supporting Parts for 7078BK Assemblies  |
|          | 2700CAB10  | Bearings & Supporting Parts for 7078BP Assemblies  |
|          | 2700CAB9   | Bearings & Supporting Parts for 7078DM Assemblies  |



**SPL 06-JX7078BA - 17CT Machine**

**Page 17 - Sound Isolation Equipment**



| <b>W/O Vintage, Vintage J01, &amp; Vintage L01</b> |                   |   |
|--|-------------------|---|
| <b>Ref. No.</b>                                    | <b>Part or ML</b> | <b>Description</b>  |
| 1  | 310JJ1            | Isolation, Sound, Rectangular, 6 in. L x 3 in. W, (2) 1 in. dia. holes      |
|  | 310JJ4            | Isolation, Sound, Rectangular, 2.5 in. L x 3 in. W, (2) 1 in. dia. holes    |
|  | 310JJ5            | Isolation, Sound, Rectangular, 6 in. L x 3 in. W, (2) 1.38 in. dia. holes   |
|  | 310JJ6            | Isolation, Sound, Rectangular, 3 in. L x 3 in. W, (2) 1.38 in. dia. holes   |
|  | 310JJ7            | Isolation, Sound, Rectangular, 3.5 in. L x 3 in. W, (2) 1.38 in. dia. holes |
| 2  | 310BE1            | Isolation, Sound, Rectangular, 6 in. L x 6 in. W, (4) 1 in. dia. holes      |
|  | 310BE2            | Isolation, Sound, Rectangular, 6 in. L x 3 in. W, (4) 1 in. dia. holes      |
|  | 310BE3            | Isolation, Sound, Rectangular, 3 in. L x 3 in. W, (4) 1 in. dia. holes      |
|  | 310BE4            | Isolation, Sound, Rectangular, 5 in. L x 3 in. W, (4) 1 in. dia. holes      |
| 3*   | JO310ES1          | Isolation, Sound, Round with Plate  |
|  | JO310ES2          | Isolation, Sound, Round with Plate  |
|  | JO310ES3          | Isolation, Sound, Round with Plate  |
|  | JO310ES4          | Isolation, Sound, Round with Plate  |
|  | JO310ES5          | Isolation, Sound, Square with Plate   |
|  | JO310ES6          | Isolation, Sound, Square with Plate   |
|  | JO310ES7          | Isolation, Sound, Square with Plate   |
|  | JO310ES8          | Isolation, Sound, Square with Plate   |
| 4  | 137AL4            | Tubing, 2.0 in. L   |
|  | 137AL10           | Tubing, 2.25 in. L  |
|  | 137AL8            | Tubing, 3.5 in. L   |
|  | 137AL9            | Tubing, 8.0 in. L   |

\*Part No. is marked on part.