

2.5T NAA / ANSI Brake for Gen2 System

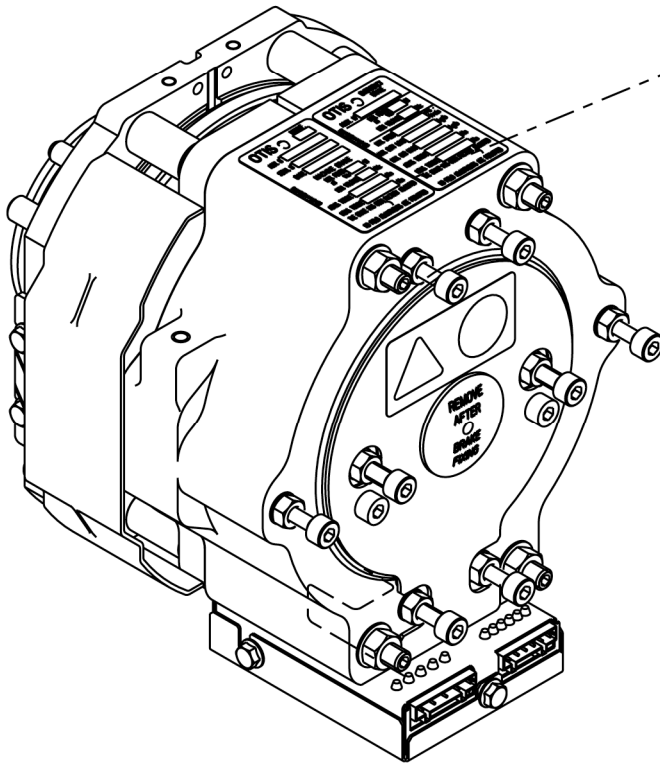
Spare Parts Leaflet

07-TAA20222BD

July 23, 2014 / Page 1 of 5

VINTAGES

TAA20222BD
TBA20222BD
TCA20222BD



OTIS <input type="checkbox"/> MWF	
ASSY. N°	<input type="text"/>
SEUL. N°	<input type="text"/>
DATE	<input type="text"/>
MACHINE BRAKE	
MAX. POWER AT V _{dc}	<input type="text"/> W
NOM. VOLTAGE	<input type="text"/> V _{dc}
ADMS. TORQUE	<input type="text"/> Nm
MEAS. TORQUE	<input type="text"/> Nm
THE BRAKE HAS BEEN FACTORY ADJUSTED	
NO FIELD ADJUSTMENTS ARE PERMITTED	

OTIS <input type="checkbox"/> EMERGENCY BRAKE	
ASSY. N°	<input type="text"/>
MAX. POWER AT V _{dc}	<input type="text"/> W
NOM. VOLTAGE	<input type="text"/> V _{dc}
MAX. SPEED	<input type="text"/> rpm
MAX. DUTY LOAD	<input type="text"/> kg
MAX. CAR MASS	<input type="text"/> kg
ADMS. TORQUE	<input type="text"/> Nm
MEAS. TORQUE	<input type="text"/> Nm
THE BRAKE HAS BEEN FACTORY ADJUSTED	
NO FIELD ADJUSTMENTS ARE PERMITTED	

OTIS

SERVICE ENGINEERING
Otis Elevator Company
HRSIT, Shanghai China

Unpublished Work—© Otis Elevator Co.; 2014

Leaflet Description

This leaflet provides spare parts information for T..2022BD disk brake (26 VDC). This brake is a Dual Solenoid one designed specially for the Gen2 2.5T machine roomless elevator system to be installed in NAA / ANSI markets.

Leaflet Revisions

Date Revised	Subject Matter Expert	Reason for Revision
November 2006	J.A. Illan	New arrangement for “EN” application
April 2008	J.A. Illan	Added Varistor
April 2009	J.A. Illan	Added vintage and assembly sensors
July 23, 2014	J.A. Illan	Updated ref. 8 on p. 5

Related Drawings

Drawing No.	Title	Drawing No.	Title
TCA20222BD	Brake	---	---

Related Documents

Document ID	Title
TAA26AVC	Brake Characteristics
P-FR-MEC-0180	Sensor Retrofit Procedure

Subject Matter Expert

Name	Department
Val Sheynkman	OSC Service Engineering

About Spare Parts Leaflets...

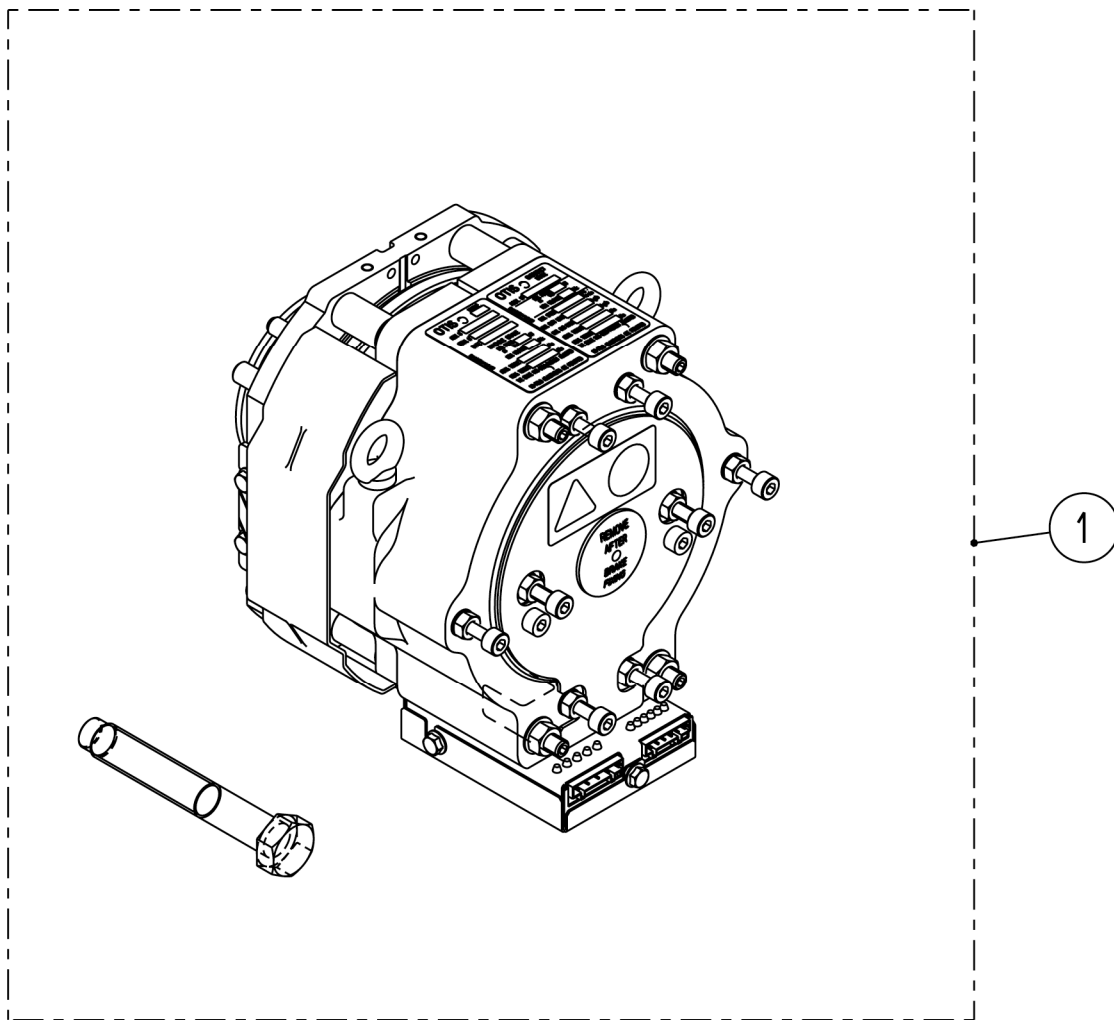
This document lists the lowest replaceable units (LRUs) for the standard version of the product. The LRUs are chosen by a team of Otis associates representing engineering and manufacturing.

While goal of this document is to make parts identification as easy as possible, the document cannot be all-inclusive. Elevator and escalator contracts classified as “special” or “custom” are not addressed here. For such contracts, please refer to specified information, the contract folder, TIPs, Field Education Articles, Construction Letters, etc. for further information.

If you have any suggestions about this document, please contact the subject matter expert listed on this page.

2.5T NAA / ANSI Brake for Gen2 System

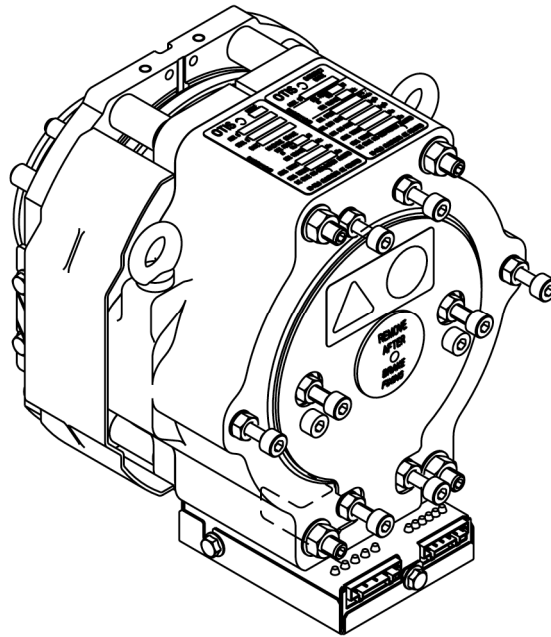
07-TAA20222BD



(*) Arrangement for “EN” application.

T..20222BD						
REF. No.	DUTY LOAD (kg)	SPEED (m/s)	ASSEMBLY	VOLTAGE (V)	LINING	REPLACED WITH
1	≤955	≤1.78	T..20222BD102 T..20222BD4 T..20222BD2	26	Carlisle	TCA20222BD102 + TAA27076FZ1 + TAA27076FZ2 + (2) DIN580 M8
	≤1135					
	≤1150	≤1.75	T..20222BD121	26	Carlisle	TCA20222BD121 (*) + TAA27076FZ1 + TAA27076FZ2 + (2) DIN580 M8

2.5T NAA / ANSI Brake for Gen2 System

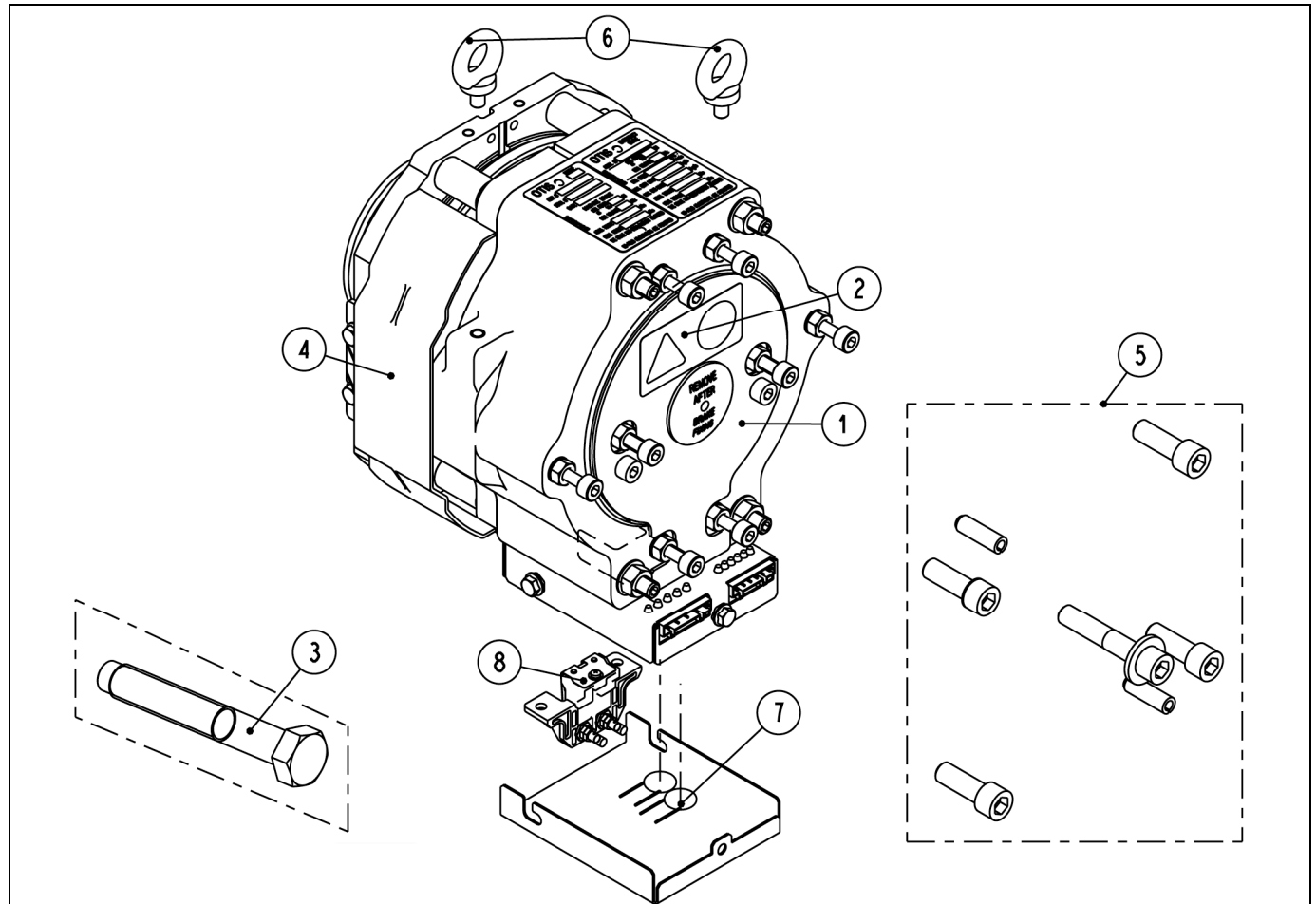


BRAKE NAMING EVOLUTION

NAMING April 2009	APPLICATION	NAMING April 2005	NAMING On Feb 2005	NAMING on Feb 2003	NAMING on Sep 2002
TCA20222BD102	955 kg	TBA20222BD102	TAC20222BD2	TAB20222BD4	TAA20222BD4 (w/sensors)
	1135 kg			TAB20222BD2	TAA20222BD3 (w/o sensors)
TCA20222BD102		1150 kg	TBA20222BD121	---	---

2.5T NAA / ANSI Brake for Gen2 System

07-TAA20222BD



T..20222BD			
REF. No.	PART No.		DESCRIPTION
1	TAA346MK1	TAA – TAB20222BD...	Cover
	TAA346MK2	T.. – TAC20222BD...	
	(2) ISO4762 M8 x 12 (DIN912 M8 x 12)	T..20222BD...	Screw
2	TAA102GW1	T..20222BD...	Label
3	TAA27076FZ2	T..20222BD...	(1) Screw TAA124DP2 (for removing the brake)
4	TAA384JB2	T..20222BD...	Guard
	(2) TAA124BF1		Screw
5	TAA27076FZ1	T..20222BD...	Hardware Kit for Assembling the Brake on the Machine Consists of: (2) Pins ISO8752-10x24-St (4) Washers TAA130AT3 (4) Screws ISO4762 M12x30-8.8-B (1) Screw ISO4762 M12x70-10.9-B (1) Washer DIN6796 M12-FST
6	(2) DIN580 M8	T..20222BD...	Eye bolt (lifting bolt)
7	(2) T0232BA3	T..20222BD...	Varistor
8	TAA27076VB1	T..20222BD...all	Assembly Sensor