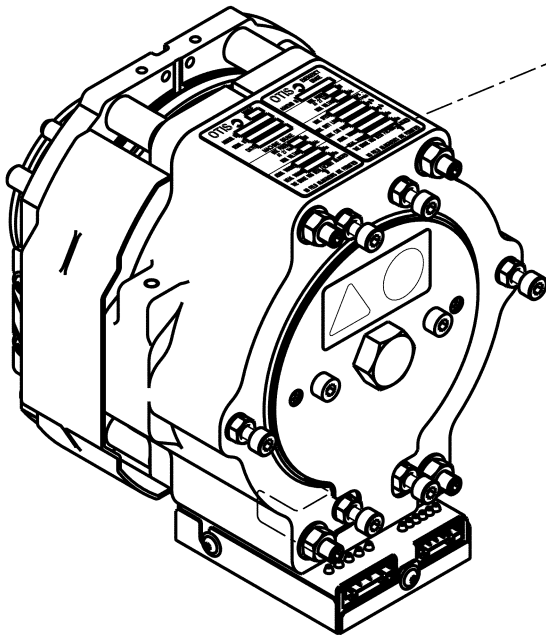


2.5T NAA / ANSI Brake for Gen2 System

Spare Parts Leaflet

07-TAB20222BD

April 2003 / Page 1 of 4



OTIS	0	NAME
ASSEMB. N°	<input type="text"/>	
SERIAL N°	<input type="text"/>	
DATE	<input type="text"/>	
MACHINE BRAKE		
MAX. POWER AT 27 Vdc	<input type="text"/>	W
NOM. VOLTAGE	<input type="text"/>	Vdc
ADMS. TORQUE	<input type="text"/>	Nm
MEAS. TORQUE	<input type="text"/>	Nm
THE BRAKE HAS BEEN FACTORY ADJUSTED		
<input type="radio"/> NO FIELD ADJUSTMENTS ARE PERMITTED		

OTIS	0	EMERGENCY BRAKE
ASSEMB. N°	<input type="text"/>	
MAX. POWER AT 27 Vdc	<input type="text"/>	W
NOM. VOLTAGE	<input type="text"/>	Vdc
MAX. SPEED	<input type="text"/>	rpm
MAX. DUTY LOAD	<input type="text"/>	kg-b
MAX. CAR MASS	<input type="text"/>	kg-b
ADMS. TORQUE	<input type="text"/>	Nm
MEAS. TORQUE	<input type="text"/>	Nm
THE BRAKE HAS BEEN FACTORY ADJUSTED		
<input type="radio"/> NO FIELD ADJUSTMENTS ARE PERMITTED		

Unpublished Work—© Otis Elevator Co., 2003

OTIS

Safety First!

**Otis Engineering Center
Madrid
Otis Elevator Company**

Leaflet Description

This leaflet provides spare parts information for TAB20222BD disk brake (26 VDC). This disk brake is a Dual Solenoid one designed specially for the Gen2 2.5T machine roomless elevator system to be installed in NAA / ANSI markets.

Leaflet Revisions

Date Revised	Subject Matter Expert	Reason for Revision
April 2003	D. Gil	Change on lining material & plates finish to avoid sticking. Change from TAA to TAB.
---	---	---

Related Drawings

Drawing No.	Title	Drawing No.	Title
TAB20222BD	Brake	---	---

Related Documents

Document ID	Title
---	---

Subject Matter Expert

Name	Department
D. Gil	Innovation OEC - Madrid

About Spare Parts Leaflets...

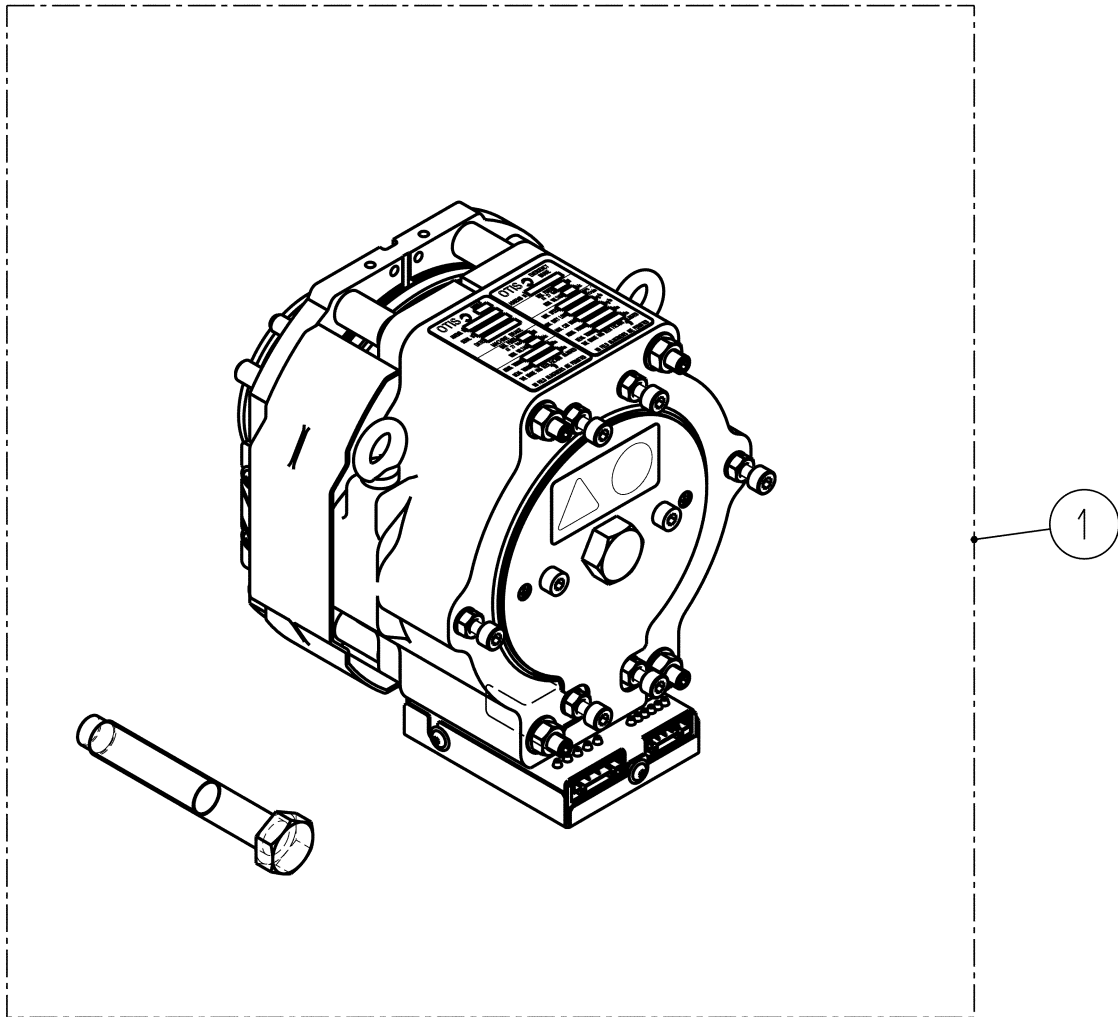
This document lists the lowest replaceable units (LRUs) for the standard version of the product. The LRUs are chosen by a team of Otis associates representing engineering and manufacturing.

While goal of this document is to make parts identification as easy as possible, the document cannot be all-inclusive. Elevator and escalator contracts classified as "special" or "custom" are not addressed here. For such contracts, please refer to specified information, the contract folder, TIPs, Field Education Articles, Construction Letters, etc. for further information.

If you have any suggestions about this document, please contact the subject matter expert listed on this page.

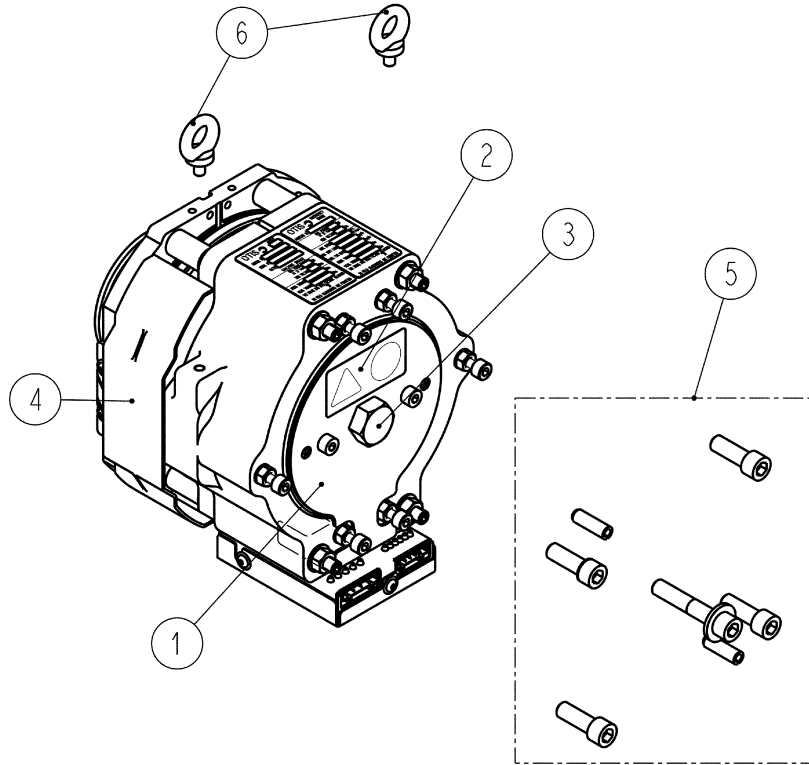
2.5T NAA / ANSI Brake for Gen2 System

07-TAB2022BD



TAB2022BD				
REF. No.	DUTY LOAD (kg)	SPEED (m/s)	VOLTAGE (V)	ARRANGEMENT
1	≤955	≤1.78	26	TAB2022BD4 + TAA124DP2 + TAA5300KJ1 + (2) DIN580 M8
	≤1135			TAB2022BD2 + TAA124DP2 + TAA5300KJ1 + (2) DIN580 M8

**2.5T NAA / ANSI Brake
for Gen2 System**



TAB2022BD			
REF. No.	PART No.	W →	DESCRIPTION
1	TAA346MK1	TAB2022BD2 - 4	Cover
	(2) ISO4762 M8 x 12 (DIN912 M8 x 12)	TAB2022BD2 - 4	Screw
2	TAA102GW1	TAB2022BD2 - 4	Label
3	TAA124DP2	TAB2022BD2 - 4	Screw
4	TAA384JB2	TAB2022BD2 - 4	Guard
	(2) TAA124EJ1	TAB2022BD2 - 4	Screw
5	TAA5300KJ1	TAB2022BD2 - 4	Hardware Kit for Assembling the Brake on the Machine Consists of: (2) Pins ISO8725-10x24-B (4) Washers TAA130AT3 (4) Screws ISO4762 M12x30-8.8-B (1) Screw ISO4762 M12x70-10.9-B (1) Washer DIN6796 M12-F
6	(2) DIN580 M8	TAB2022BD2 - 4	Eye bolt (lifting bolt)