

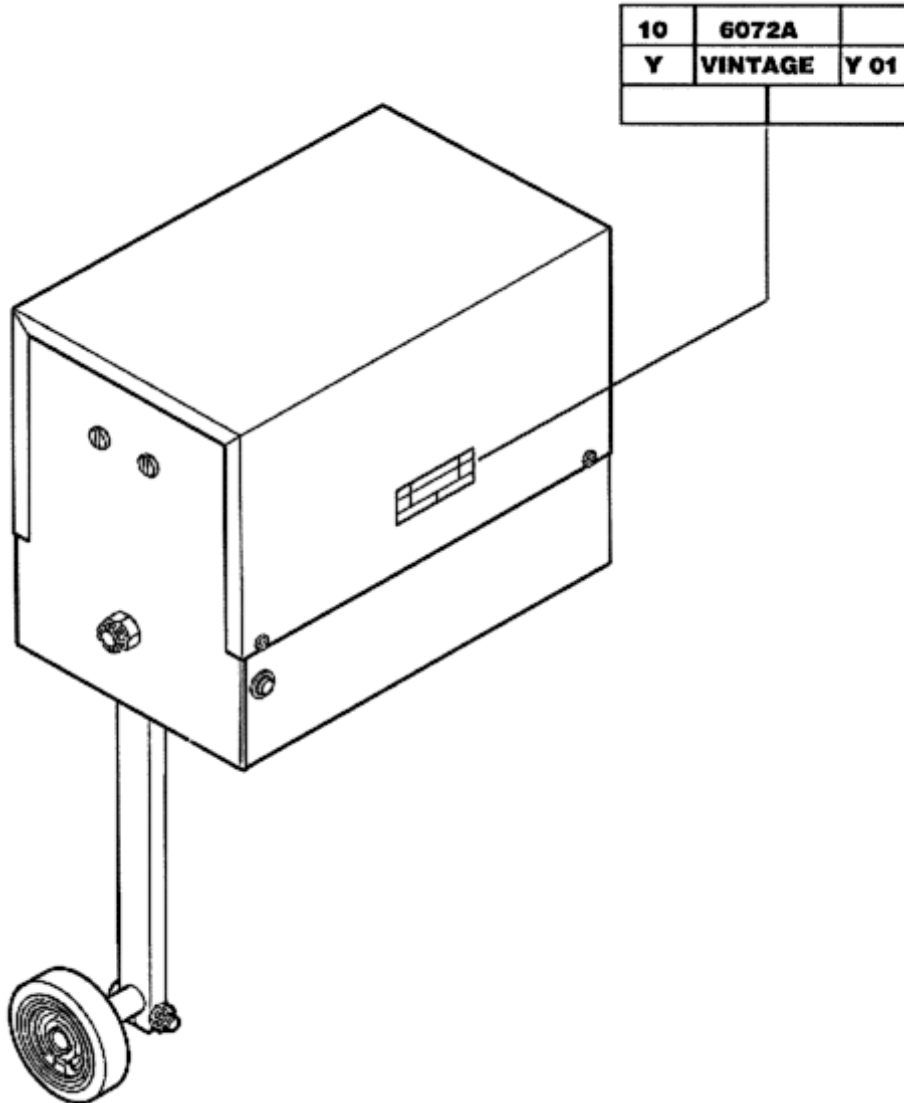
# SPL 10-6072A - Type 6072A Stopping Switch

Unpublished Work - © Otis Elevator Company. Any unauthorized reproduction, disclosure, or distribution of copies or content by any person of any portion of this work may be a violation of Copyright Law of the United States of America. All rights reserved.

October 1990

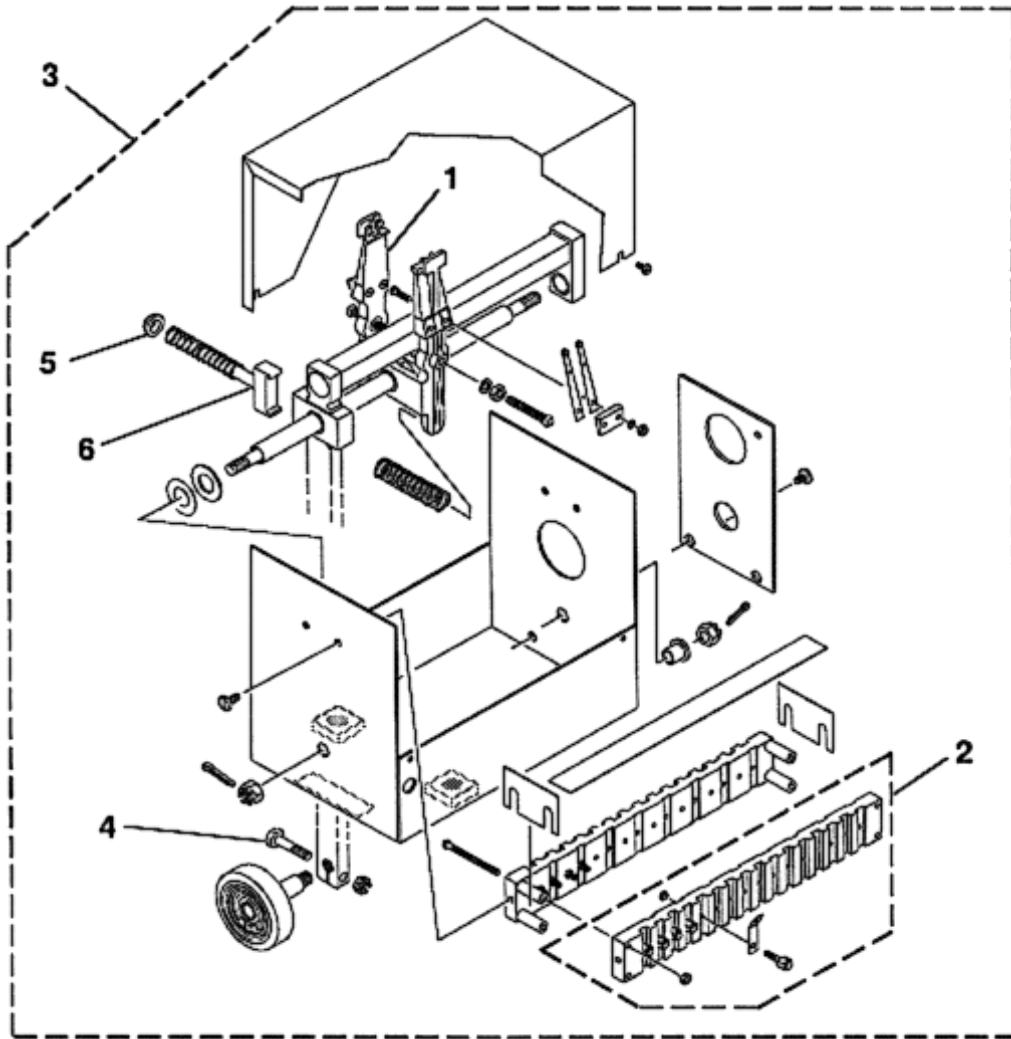
Supersedes SPL C-918A Dated: November 1945

Page 1



## SPL 10-6072A - Type 6072A Stopping Switch

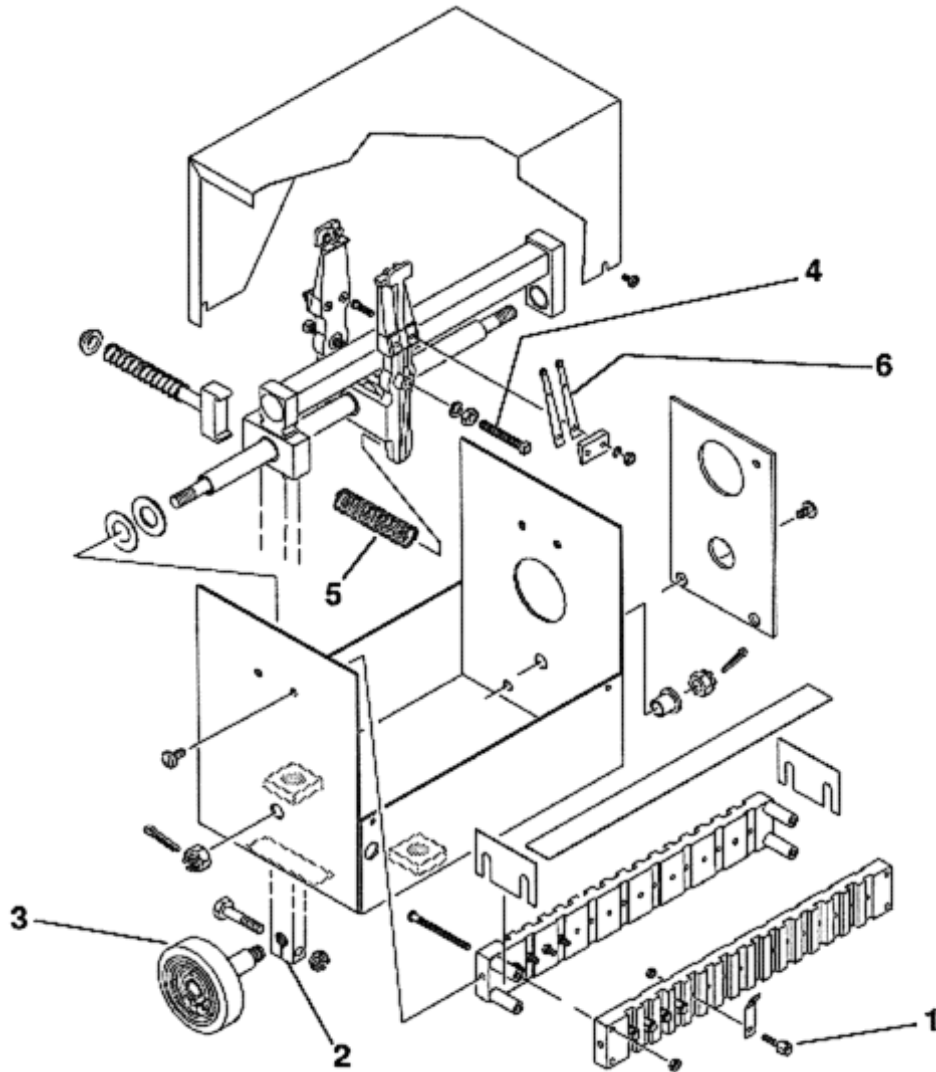
Page 2



VINTAGE Y 01		
REF. No.	PART OR ML	DESCRIPTION
1	A287C2	Arm, Switch w/Bushing
2	2010A1	Assembly, Base w/6 ea. Contact Holders & Terminals
	2010A2	Assembly, Base w/10 ea. Contact Holders & Terminals
	2010A3	Assembly, Base w/16 ea. Contact Holders & Terminals
3	A6072A5	Assembly, Switch w/10 Switch Arms and 16" Lever
	A6072A6	Assembly, Switch w/16 Switch Arms and 16" Lever
4	53B1	Bolt; for Roller
5	321W1	Bushing, for Equalizers
6	161A2	Equalizer w/Pin

## SPL 10-6072A - Type 6072A Stopping Switch

Page 3



VINTAGE Y 01		
REF. No.	PART OR ML	DESCRIPTION
1	179D2	Holder w/Contact
2	379H4	Lever, 16 in., for Switch w/6 Arms
	379H5	Lever, 16 in., for Switch w/10 Arms
	379H6	Lever, 16 in., for Switch w/16 Arms
3	A6037D1	Roller, Complete
4	115A1	Screw, 1/4" Sq. Hd. Oval Point Adjusting, for Switch Arm
5	90D1	Spring, Arm Returning
6	93A2	Spring, with Contact; For order specify 2 for each Switch Arm