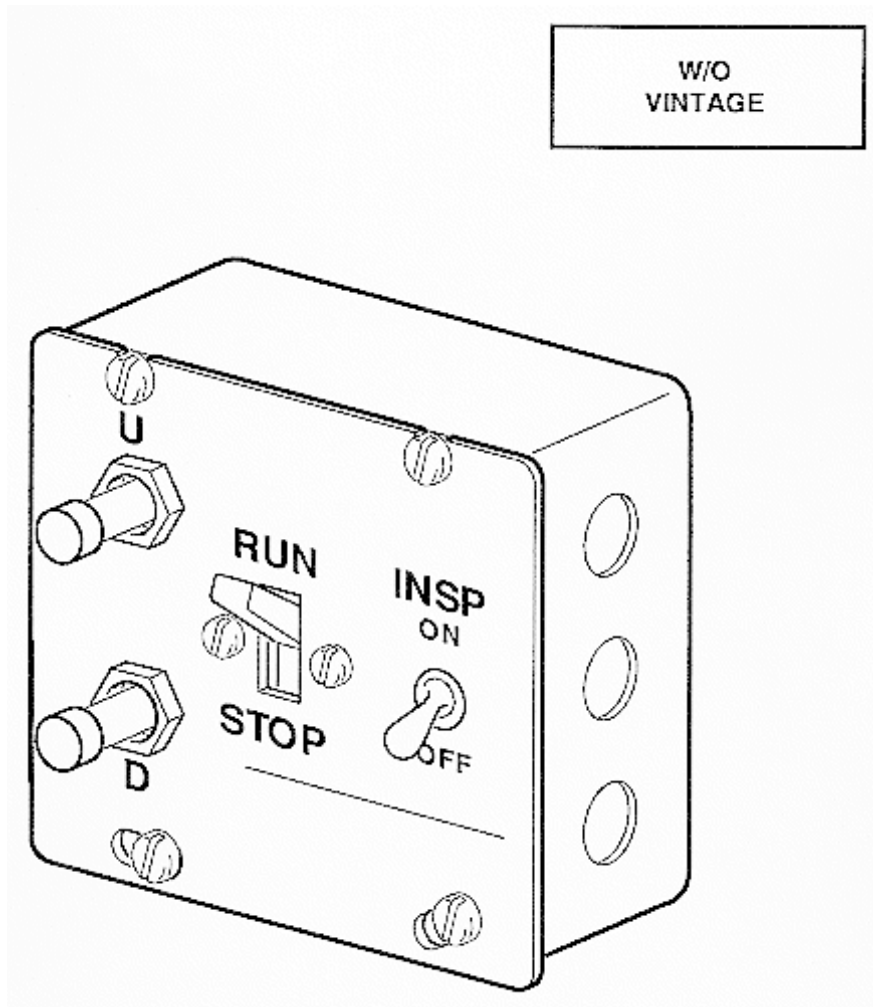


# SPL 10-7003AL - Inspection & Emergency Stop Control Box Assembly

Unpublished Work - © Otis Elevator Company. Any unauthorized reproduction, disclosure, or distribution of copies or content by any person of any portion of this work may be a violation of Copyright Law of the United States of America. All rights reserved.

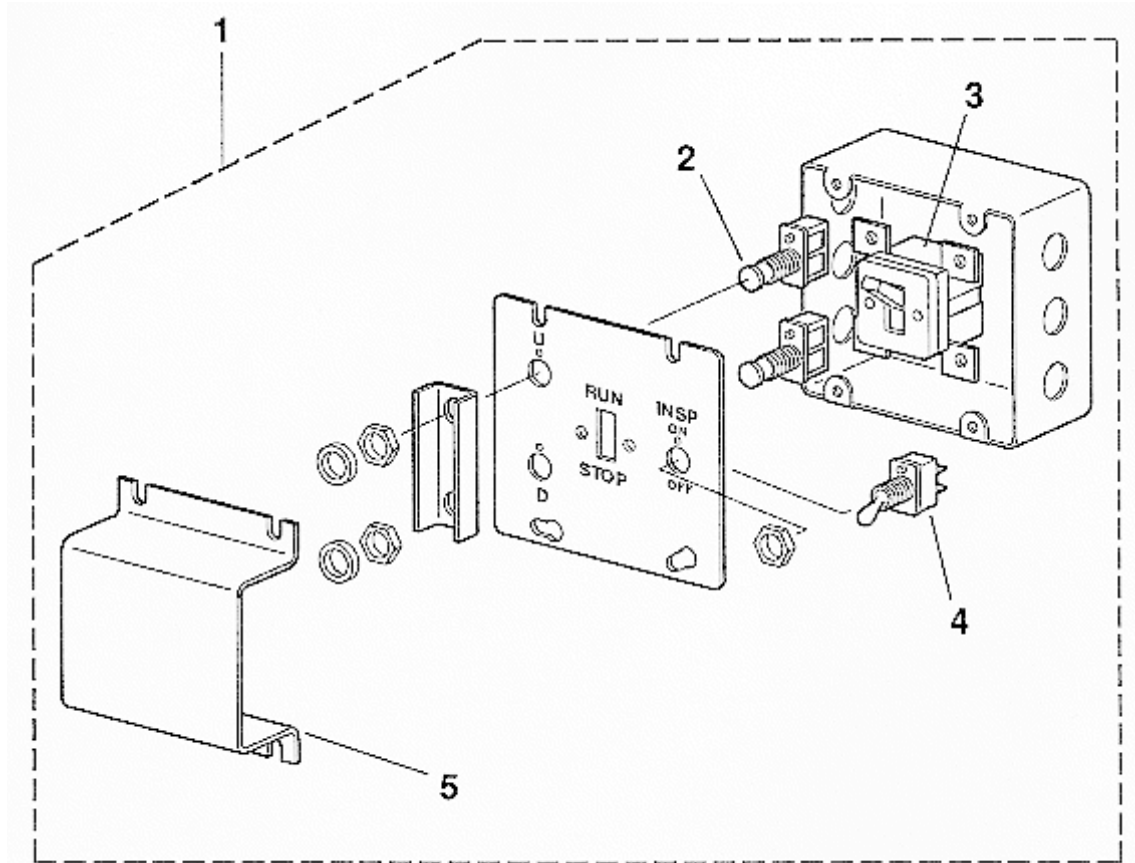
April 1993

Page 1



# SPL 10-7003AL - Inspection & Emergency Stop Control Box Assembly

Page 2



REF. No.	Without VINTAGE & VINTAGE Y 01 PART OR ML	DESCRIPTION
1	7003AL1 7003BE2	Assembly, Emergency Stop/Inspection Switches See Also SPL 10-7003BE for Detail
	7003AL2 7003BE3	Assembly, Emergency Stop Switch (Pit Switch) See Also SPL 10-7003BE for Detail
2	P177BX1	Switch, Concave Button, 0.75A, 125VDC, 2-Leads
3	P177BY1	Switch, Lever, Red, 20A, 250VAC
4	6599A7	Switch, Toggle, Double-Pole, Double-Throw
5	316CCJ2	Guard