

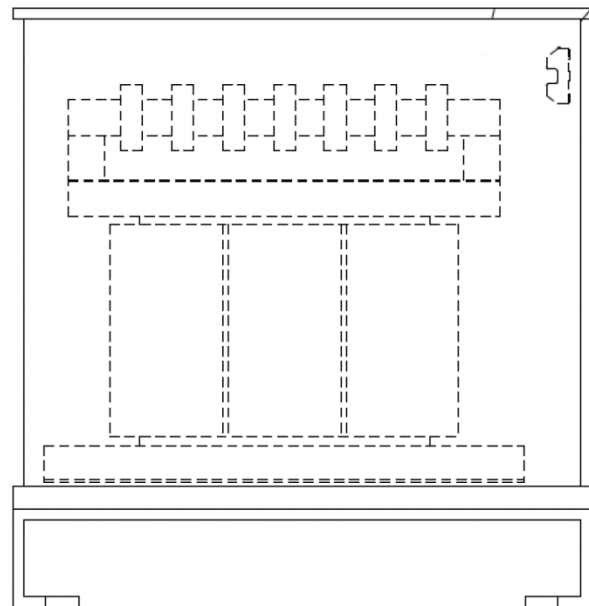
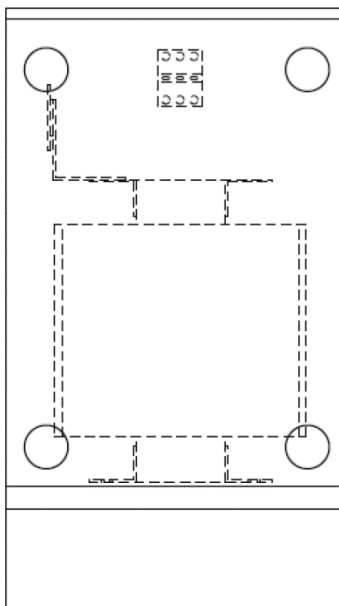
Transformer
Skyrise® / E2

Spare Parts Leaflet

10-AAA21799F

March 25, 2014 / Page 1 of 3

**W/O
VINTAGE**



OTIS

SERVICE ENGINEERING
Otis Elevator Company
HRSIT, Shanghai China

Unpublished Work—© Otis Elevator Co.; 2014

Leaflet Description

This spare parts leaflet lists the lowest replaceable units for transformer assembly, which is used for our control system when construction voltage doesn't meet our requirements.

Leaflet Revisions

Date Revised	Subject Matter Expert	Reason for Revision
March 25, 2014	Pan Guoping	New SPL

Related Drawings

Drawing No.	Title	Drawing No.	Title
AAA21799F	Transformer		

Related Documents

Document ID	Title

Subject Matter Expert

Name	Department
Pan Guoping	HRSIT, Shanghai China

About Spare Parts Leaflets...

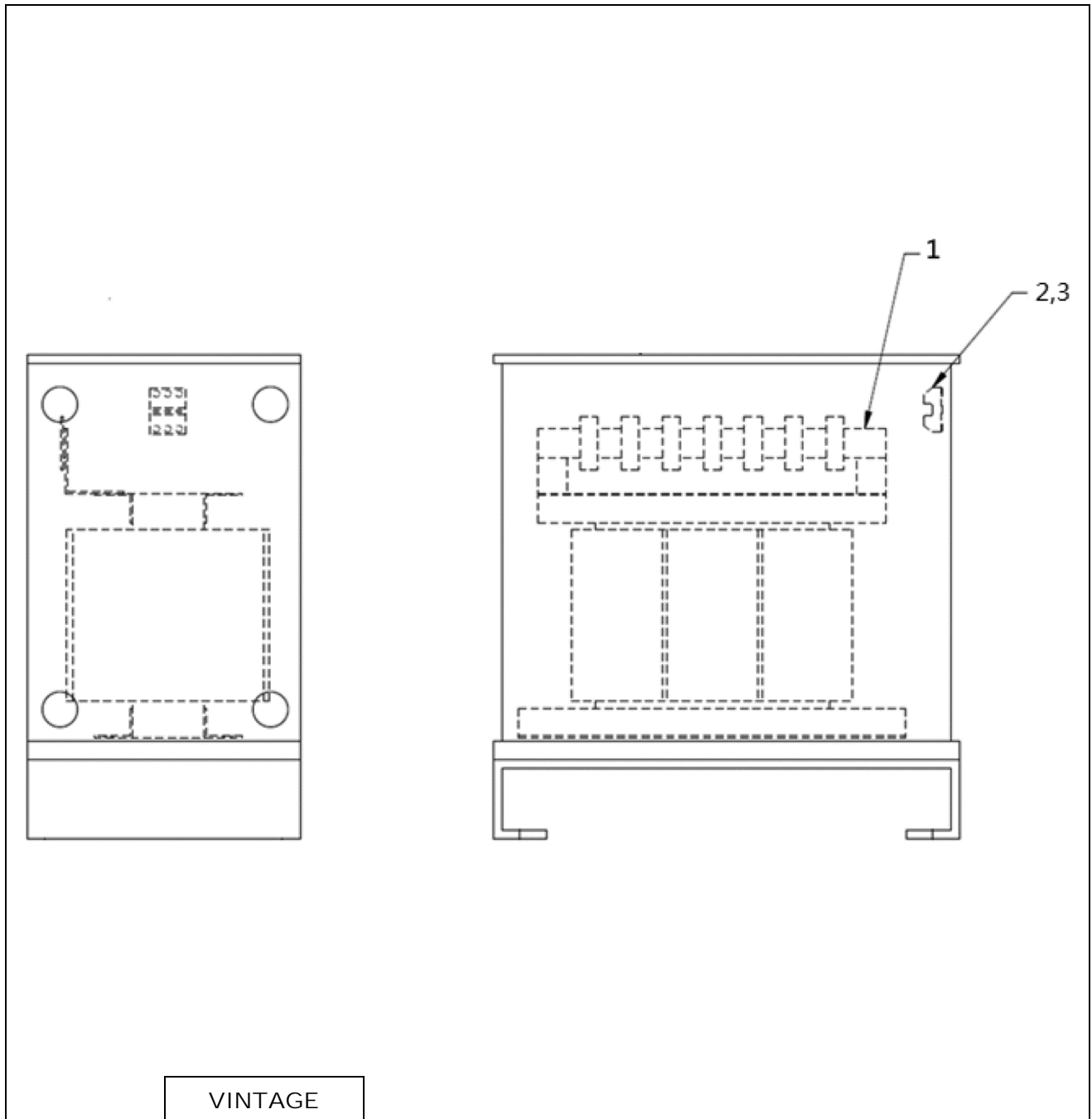
This document lists the lowest replaceable units (LRUs) for the standard version of the product. The LRUs are chosen by a team of Otis associates representing engineering and manufacturing.

While goal of this document is to make parts identification as easy as possible, the document cannot be all-inclusive. Elevator and escalator contracts classified as "special" or "custom" are not addressed here. For such contracts, please refer to specified information, the contract folder, TIPs, Field Education Articles, Construction Letters, etc. for further information.

If you have any suggestions about this document, please contact the subject matter expert listed on this page.

Transformer

10-AAA21799F



REF. No.	VINTAGE PART No.	DESCRIPTION
1	AAA225JV1	Transformer (input voltage: 360~440,32KVA, 50/60HZ)
	AAA225JV2	Transformer (input voltage: 550~600,23KVA, 60HZ)
	AAA225JV3	Transformer (input voltage: 208~230, 71KVA, 50/60HZ)
2	AAA375BZ52	Fuse, 125 Amp, 600 Volt.
3	AAA653J10	Fuse Holder, 3 Position