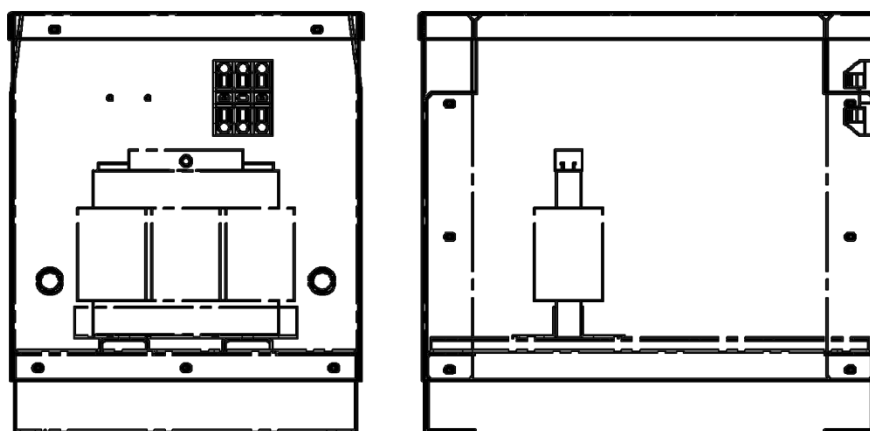


**Transformer
Enclosure Assembly**

**Spare Parts Leaflet
10-AAA21799G**

September 15, 2010 / Page 1 of 9

**W/O
VINTAGE**



Unpublished Work—© Otis Elevator Co.; 2010

OTIS

Safety First!

**SERVICE ENGINEERING
Otis Elevator Company
Bloomfield, Connecticut USA**

Leaflet Description

This leaflet provides replacement part information for the enclosure assembly that contains the power transformers that are required in variable frequency (VF) drive systems when they are not included in the main controller.

Leaflet Revisions

| Date Revised | Subject Matter Expert | Reason for Revision |
|---------------------|------------------------------|------------------------------|
| May 20, 2003 | John Dwyer | New SPL |
| August 25, 2003 | John Dwyer | Updated Ref. 3 and 5 |
| May 5, 2010 | John Kleine | Added NGPOK fuses on page 3. |
| September 15, 2010 | Sohaib Shaikh | New layout of SPL |

Related Drawings

| Drawing No. | Title | Drawing No. | Title |
|--------------------|------------------------------|--------------------|--------------|
| AAA21799G | Machine Room Transformer Box | --- | --- |
| --- | --- | --- | --- |

Related Documents

| Document ID | Title |
|--------------------|------------------------------------|
| SPL 10-AAA21290R | Controller GEM, E311VF, MVS, & HVS |
| --- | --- |

Subject Matter Expert

| Name | Department |
|---------------|----------------------------|
| Sohaib Shaikh | OSC Electrical Engineering |

About Spare Parts Leaflets...

This document lists the lowest replaceable units (LRUs) for the standard version of the product. The LRUs are chosen by a team of Otis associates representing engineering and manufacturing.

While goal of this document is to make parts identification as easy as possible, the document cannot be all-inclusive. Elevator and escalator contracts classified as "special" or "custom" are not addressed here. For such contracts, please refer to specified information, the contract folder, TIPs, Field Education Articles, Construction Letters, etc. for further information.

If you have any suggestions about this document, please contact the subject matter expert listed on this page.

Transformer Fuses

10-AAA21799G

| W/O VINTAGE | | | | | | |
|-------------|-------------|----------------------|------------------|-------------|-----------|-------------------|
| REF. No. | PART No. | DESCRIPTION | APPLICATION | TYPE | SYMBOL | |
| 1 | AAA375BN24 | Fuse, 15 A, 600 V | AAA21799G1 | I | F1,F2,F3 | |
| | | | AAA21799G2 | | | |
| | | | AAA21799G5 - G7 | | | |
| | | | AAA21799G28 | IX | | |
| | | | AAA21799G3 - G4 | II | | F1,F2,F3,F4,F5,F6 |
| | | | AAA21799G8 - 10 | III | | |
| | | | AAA21799G29 | X | | |
| | AAA21799G14 | IV | F1,F2,F3 | | | |
| | AAA21799G15 | | | | | |
| | AAA21799G24 | IV | | | | |
| | AAA21799G26 | VII | | | | |
| | AAA375BK28 | Fuse, 3.5 A, 600 V | | AAA21799G16 | V | F1,F2,F3,F4,F5,F6 |
| | | | | AAA21799G17 | | |
| | | | AAA21799G25 | | | |
| | | | AAA21799G27 | VIII | | |
| | | | AAA21799G18-20 | VI | F4,F5, F6 | |
| | AAA375BK26 | Fuse, 3A, 600 V | AAA21799G25 | V | FDD | |
| | | | AAA21799G26 | VII | FDD, FDDR | |
| | AAA375BK39 | Fuse, 10A, 600 V | AAA21799G28 | IX | FDD | |
| | | | AAA21799G29 | X | FDD, FDDR | |
| 2 | AAA653D2 | Holder, Fuse, 3 Pole | All Arrangements | All Types | N/A | |

NOTES:

1. Refer to Table 1. *AAA2199G Arrangement Descriptions* for Type selection.
2. Refer to pp7-9 for reference images.

| | | W/O VINTAGE | | | |
|-----------------|----------------------------------|---|--------------------|-------------|---------------|
| REF. No. | PART No. | DESCRIPTION | APPLICATION | TYPE | SYMBOL |
| 3 | AAA225JN1 | Transformer, 3-Phase Autotransformer, 9.0 in. L | AAA21799G1 | I | TFD |
| | | | AAA21799G28 | IX | |
| | | | AAA21799G29 | X | TFD, TRD |
| | AAA225JN3 | Transformer, 3-Phase Autotransformer, 9.0 in. L | AAA21799G2 | I | TFD |
| | | | AAA21799G4 | II | TFD, TRD |
| | AAA225FV3 | Transformer, 3-Phase, 12.0 in. L | AAA21799G5 | I | TFD |
| | | | AAA21799G18 | VI | |
| | AAA225FV5 | Transformer, 3-Phase, 12.0 in. L | AAA21799G6 | I | |
| | | | AAA21799G19 | VI | |
| | AAA225FV6 | Transformer, 3-Phase, 12.0 in. L | AAA21799G7 | I | |
| | | | AAA21799G20 | VI | |
| | AAA225JS3 | Transformer, 3-Phase, 13.0 in. L | AAA21799G8 | III | |
| | AAA225JS5 | Transformer, 3-Phase, 13.0 in. L | AAA21799G9 | | |
| | AAA225JS6 | Transformer, 3-Phase, 13.0 in. L | AAA21799G10 | | |
| | AAA225JR4 | Transformer, 1-Phase, 12.0 in. L | AAA21799G24 | IV | |
| | | | AAA21799G25 | V | |
| | AAA225JR5 | Transformer, 1-Phase, 12.0 in. L | AAA21799G15 | IV | |
| | | | AAA21799G17 | V | TFD, TRD |
| | | | AAA21799G19 | VI | TFD |
| | | | AAA21799G20 | | |
| AAA225JR6 | Transformer, 1-Phase, 12.0 in. L | AAA21799G14 | IV | TFD | |
| | | AAA21799G16 | V | TFD, TRD | |
| | | AAA21799G18 | VI | TFD | |
| | | AAA21799G26 | VII | | |
| | | AAA21799G27 | VIII | TFD, TRD | |

NOTES:

1. Refer to Table 1. *AAA2199G Arrangement Descriptions* for Type selection.
2. Refer to p7 for reference images.

Reference Table

10-AAA21799G

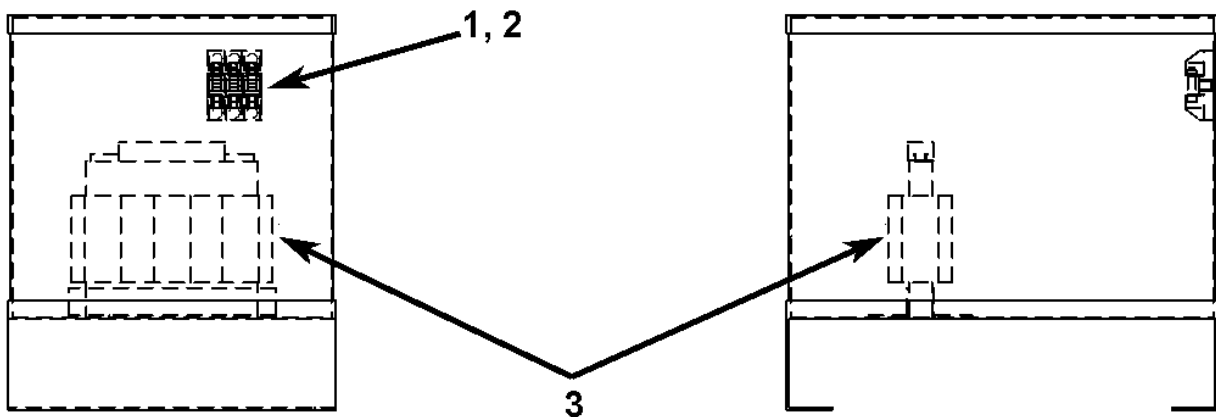
| W/O VINTAGE | | DESCRIPTION | | | TYPE |
|--------------------|--|------------------------------------|--|--|-------------|
| ARRANGEMENT | DRIVE | DOOR OPERATOR(S) (qty.) | VOLTAGE | | |
| AAA21799G1 | OVF-428 CSA Version | HPLIM (1) | 480 volt power supply or line transformer (TRL). | I | |
| AAA21799G2 | | | 360, 380, 400 or 415V volt power supply without line transformer (TRL) | | |
| AAA21799G3 | | HPLIM (2) | 480 volt power supply or with line transformer (TRL). | II | |
| AAA21799G4 | | | 360, 380, 400 or 415 volt power supply without line transformer (TRL) | | |
| AAA21799G5 | OVF-428 CEN Version | W/O HPLIM | 460 volt power supply or with line transformer (TRL) | I | |
| AAA21799G6 | | | 380 volt power supply without transformer (TRL). | | |
| AAA21799G7 | | | 415 volt power supply without line transformer (TRL) | | |
| AAA21799G8 | | HPLIM (1) | 460 volt power supply with line transformer (TRL) | III | |
| AAA21799G9 | | | 380 volt power supply without line transformer (TRL) | | |
| AAA21799G10 | | | 415 volt power supply without line transformer (TRL) | | |
| AAA21799G11 | | HPLIM (2) | 460 volt power supply with line transformer (TRL) | I & III | |
| AAA21799G12 | | | 380 volt power supply without transformer (TRL). | | |
| AAA21799G13 | | | 415 volt power supply without line transformer (TRL) | | |
| AAA21799G14 | | OVF-428 CSA Version | DO2000 (1) | 480 volt power supply or without line transformer (TRL). | IV |
| AAA21799G15 | 380, 400 or 415 volt power supply without line transformer (TRL) | | | | |
| AAA21799G16 | DO2000 (2) | | 480 volt power supply or with line transformer (TRL). | V | |
| AAA21799G17 | | | 380, 400 or 415 volt power supply without line transformer (TRL) | | |
| AAA21799G18 | OVF-428 CEN Version | DO2000 (1) | 460 volt power supply with line transformer (TRL) | VI | |
| AAA21799G19 | | | 380 or 400 volt power supply without line transformer (TRL) | | |
| AAA21799G20 | | | 415 volt power supply without line transformer (TRL) | | |
| AAA21799G21 | | DO2000 (2) | 460 volt power supply with line transformer (TRL) | I & IV | |

| W/O VINTAGE | | DESCRIPTION | | | TYPE |
|--------------------|---------------------------|-----------------------------|---|--------|-------------|
| ARRANGEMENT | DRIVE | DOOR OPERATOR (qty.) | VOLTAGE | | |
| AAA21799G22 | OVF-428 CEN Version | DO2000 (2) | 380 or 400 volt power supply without line transformer (TRL) | I & IV | |
| AAA21799G23 | OVF-428 CSA Version | | 415 volt power supply without line transformer (TRL) | | |
| AAA21799G24 | --- | DO2000 (1) or NGPOK (1) | 200 to 240 volt power supply | IV | |
| AAA21799G25 | | DO2000 (2) or NGPOK (2) | 200 to 240 volt power supply | V | |
| AAA21799G26 | | DO2000 (1) or NGPOK (1) | 440 to 605 volt power supply with FDD fuse | VII | |
| AAA21799G27 | | DO2000 (2) or NGPOK (2) | 200 to 240 volt power supply with FDD and FDDR fuses | VIII | |
| AAA21799G28 | | HPLIM (1) | 440 to 501 volt power supply with FDD fuse | IX | |
| AAA21799G29 | | HPLIM (2) | 440 to 501 volt power supply with FDD and FDDR fuses | X | |

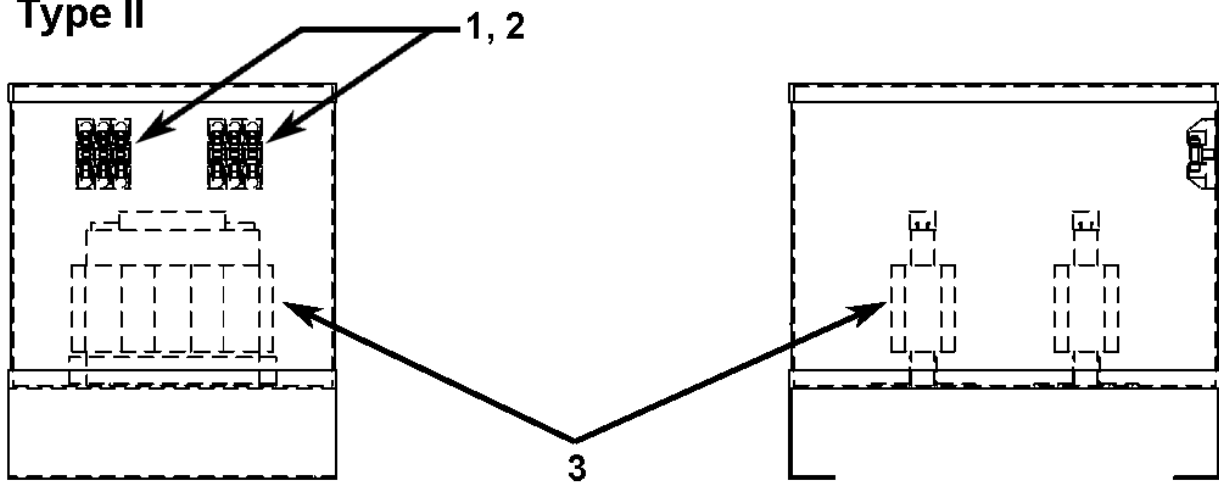
Reference Images

10-AAA21799G

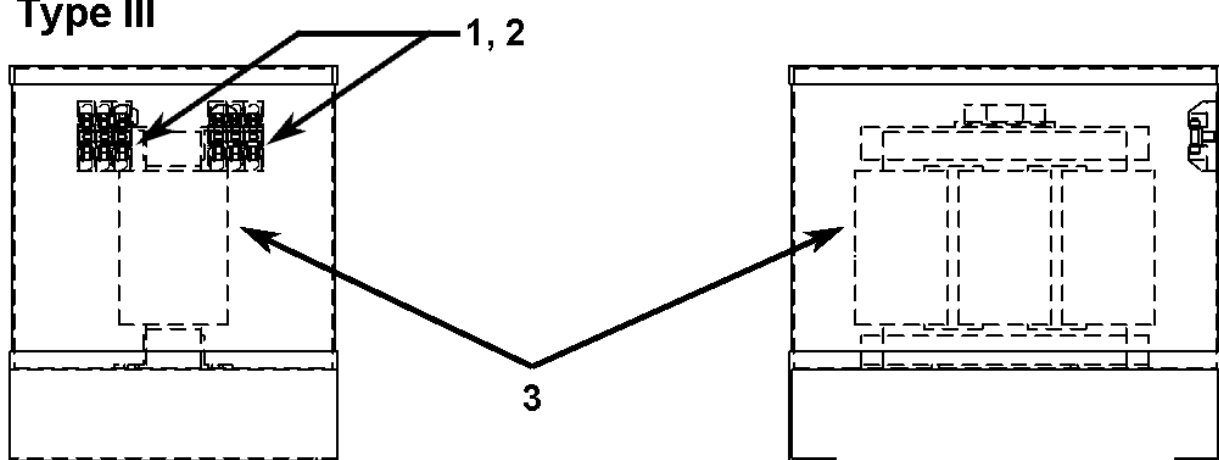
Type I



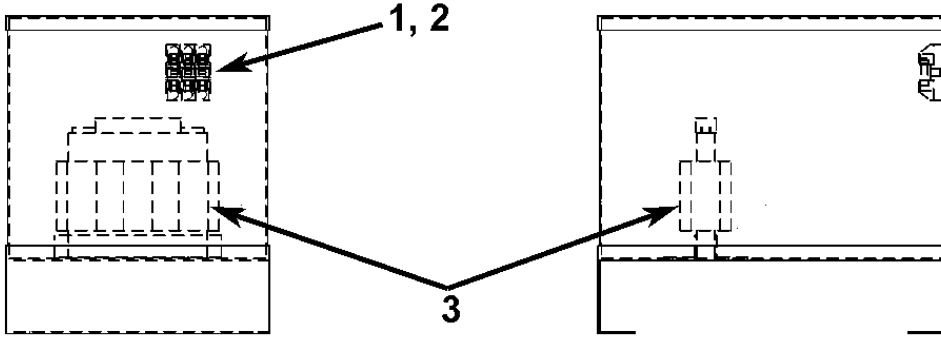
Type II



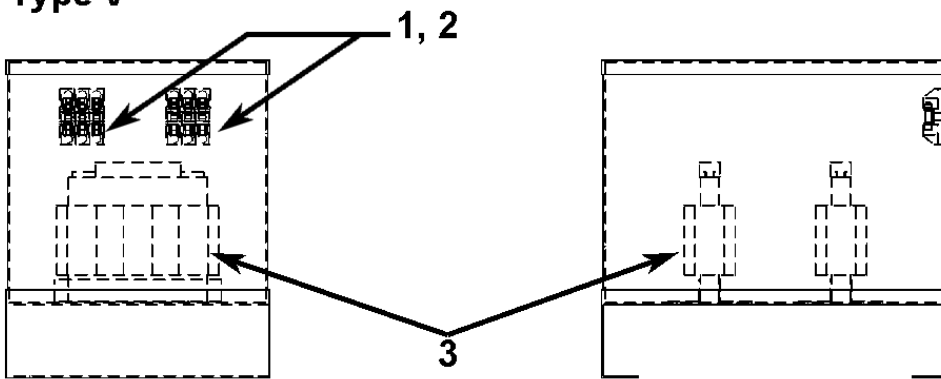
Type III



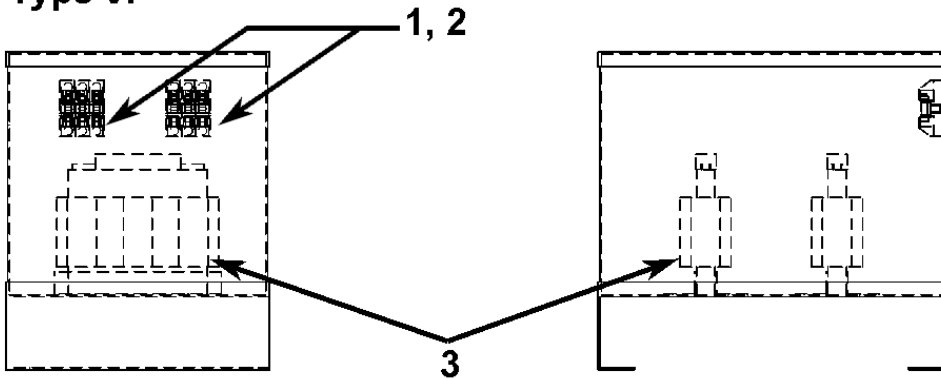
Type IV



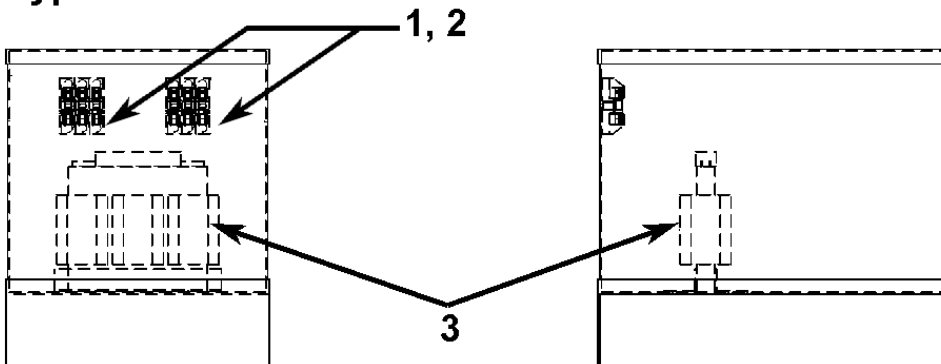
Type V



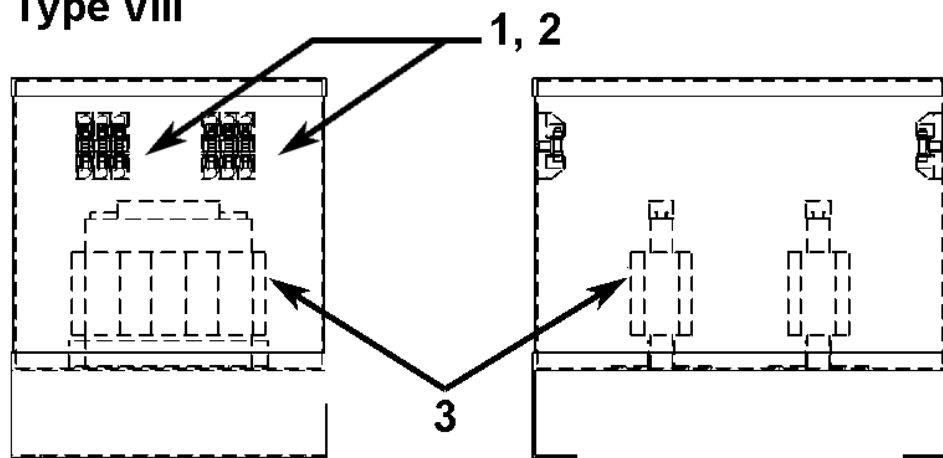
Type VI



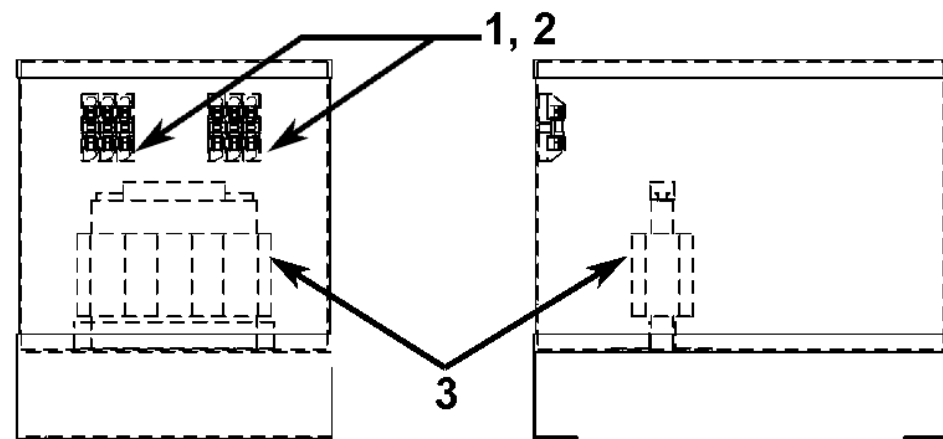
Type VII



Type VIII



Type IX



Type X

