

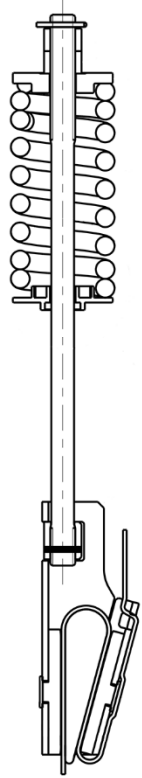
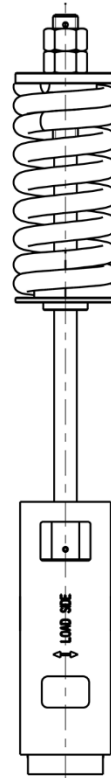
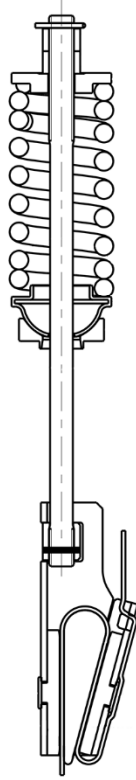
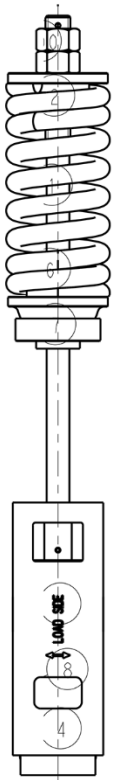
**Termination for Gen2
(86 kn, 60 mm wide)**

Spare Parts Leaflet

11-AAA20650AK

April 29, 2020 / Page 1 of 4

**W/O
VINTAGE**



OTIS

This document does not contain any technical data subject to EAR or ITAR

**SERVICE ENGINEERING
Otis Elevator Company
Bloomfield, Connecticut USA**

Unpublished Work—© Otis Elevator Co.; 2020

Leaflet Description

This leaflet provides information for the Gen2 86 kn terminations. These terminations were designed specifically for modernization applications with the 86 kn, 60 mm wide belts.

Leaflet Revisions

Date Revised	Subject Matter Expert	Reason for Revision
September 12, 2018	Gary Mendrala	New SPL
April 29, 2020	Gary Mendrala	Corrected part numbers on p. 3

Related Drawings

Drawing No.	Title	Drawing No.	Title
AAA20605AK	Termination, CSB	AAA21700AZ	Pulse RBI 86 kn Gen2
AAA717AJ	Coated Steel Belt		

Related Documents

Document ID	Title
11-AAA712P	Wire Rope, Coated Steel Belt
10-AAA21700AZ	86 kn Pulse RBI

Subject Matter Expert

Name	Department
Gary Mendrala	Service Engineering OSC

About Spare Parts Leaflets...

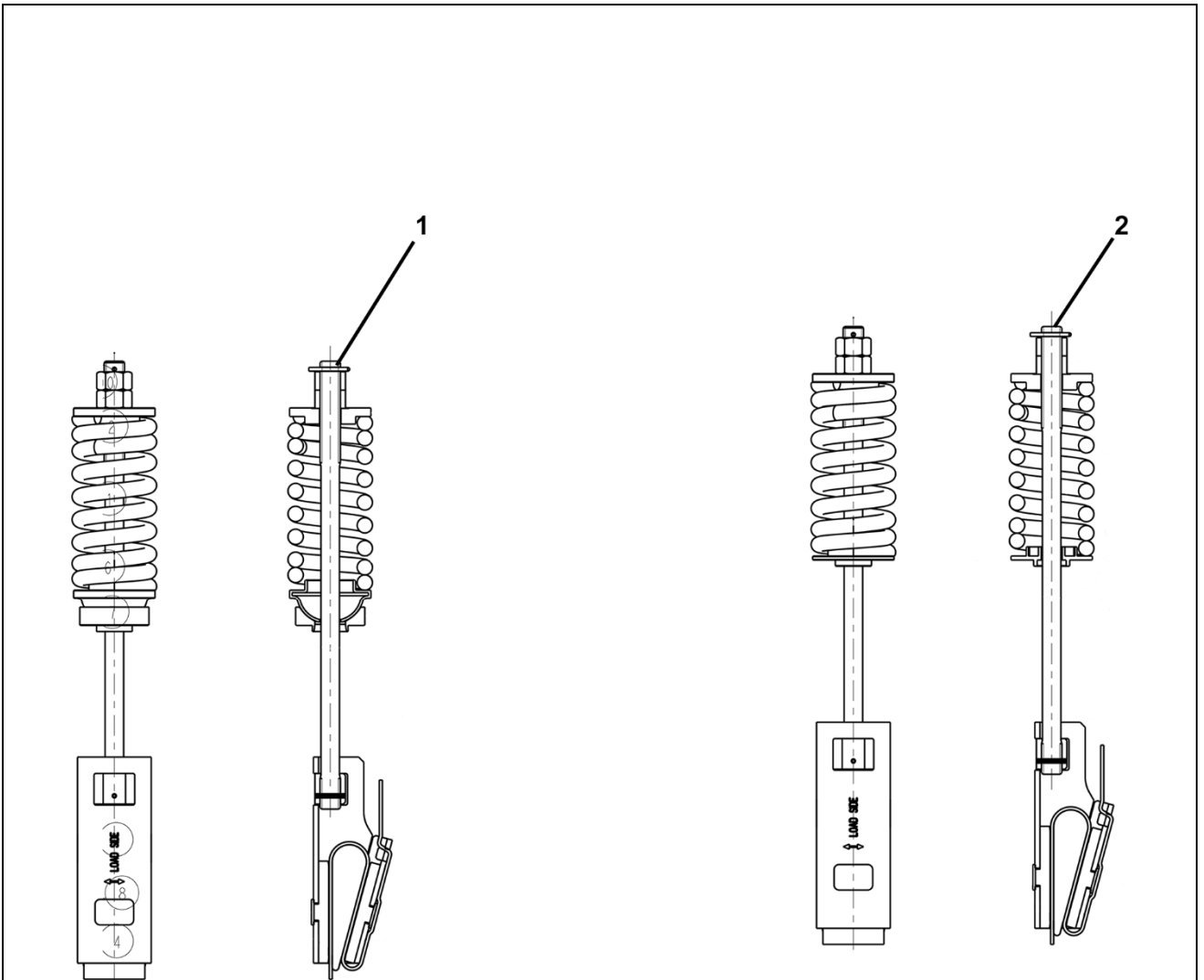
This document lists the lowest replaceable units (LRUs) for the standard version of the product. The LRUs are chosen by a team of Otis associates representing engineering and manufacturing.

While goal of this document is to make parts identification as easy as possible, the document cannot be all-inclusive. Elevator and escalator contracts classified as “special” or “custom” are not addressed here. For such contracts, please refer to specified information, the contract folder, TIPS, Field Education Articles, Construction Letters, etc. for further information.

If you have any suggestions about this document, please contact the subject matter expert listed on this page.

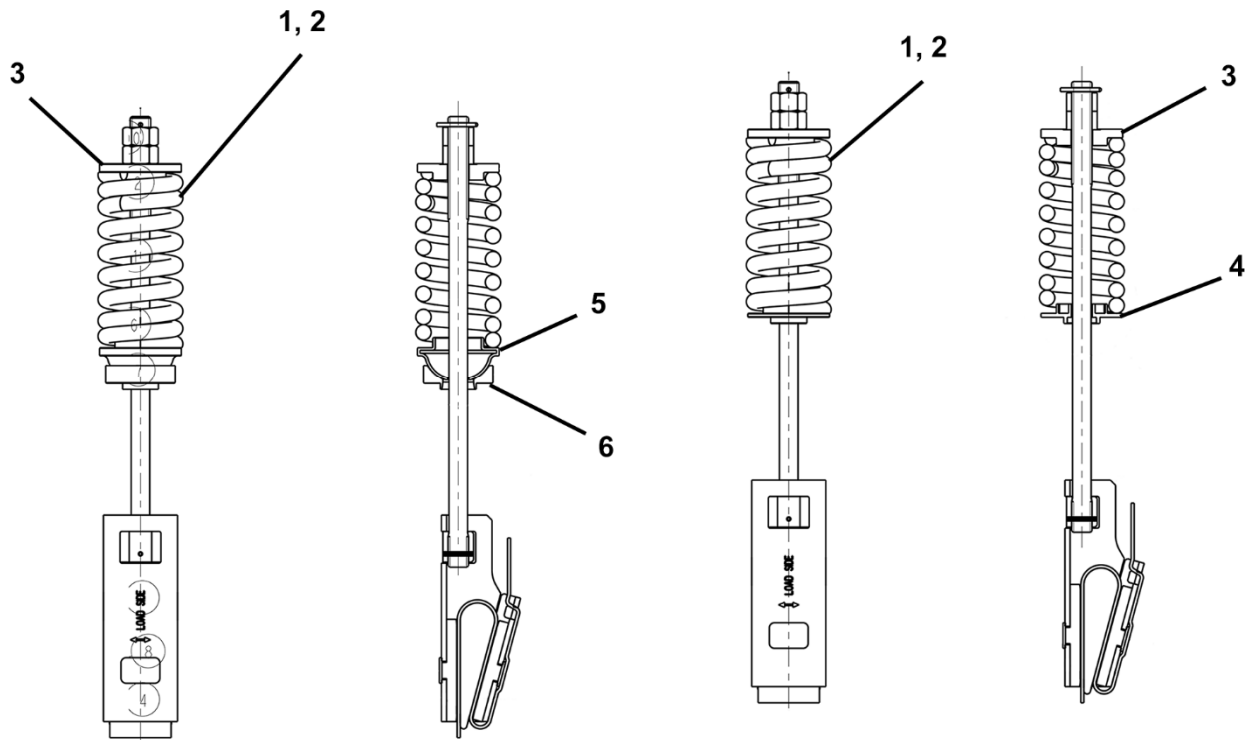
Termination for Gen2 (86 kn, 60 mm wide)

11-AAA20650AK



		W/O VINTAGE
REF. No.	PART No.	DESCRIPTION
1	AAA20650AK1	Termination 86 kn, Car Side, Red Spring, Spherical Seat
	AAA20650AK2	Termination 86 kn, Counterweight Side, Black Spring, Spherical Seat
2	AAA20650AK3	Termination 86 kn, Car Side, Red Spring, Flat Washer Seat
	AAA20650AK4	Termination 86 kn, Counterweight Side, Black Spring, Flat Washer Seat

**Termination for Gen2
(86 kn, 60 mm wide)**



W/O VINTAGE		
REF. No.	PART No.	DESCRIPTION
1	AAA90GK3	Spring, Counterweight Side (Black spring), 2 in. ID, 3.2 in. OD, L = 7.7 in.
2	AAA90GK1	Spring, Car Side (Red spring), 2 in. ID, 3.3 OD, L = 6.7 in.
3	TAA131AN1	Washer, Upper
4	AAA131MR2	Washer, Lower, Flat
5	TAA392BP2	Washer, Lower, Spherical
6	TAA392BR2	Washer, Lower, Cup