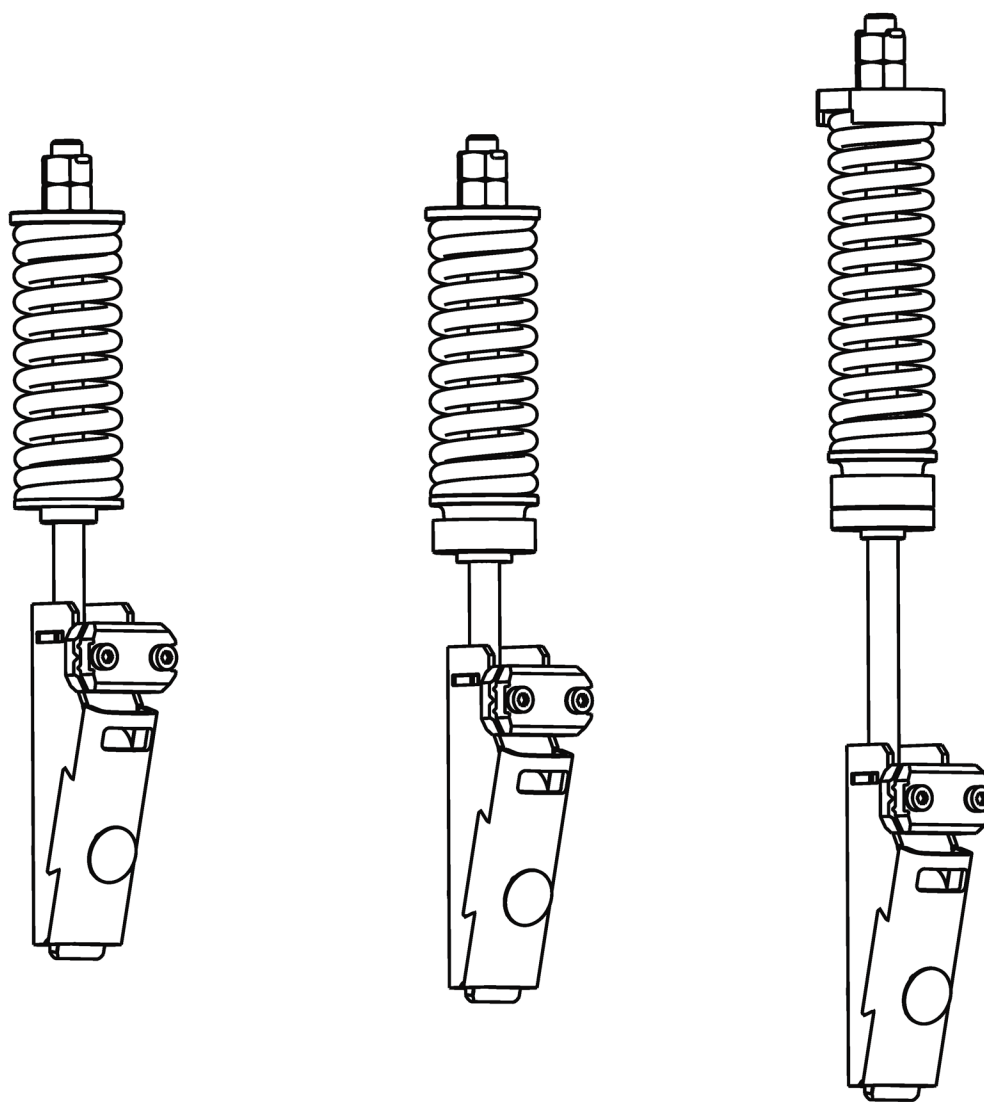


**Termination for
GeN2 32kN 30mm CSB**

Spare Parts Leaflet

11-TAA20650F

July, 2005 / Page 1 of 5



Unpublished Work—©Otis Elevator Co.; 2003

OTIS

Safety First!

**OTIS Engineering Center
Madrid
Otis Elevator Company**

Leaflet Description

This leaflet provides spare parts information for TAA20650F terminations. These terminations have been specially designed for the 32 KN Coated Steel Belts (CSB) with 30mm width and 3mm thickness.

Leaflet Revisions

Date Revised	Subject Matter Expert	Reason for Revision
April 2003	D. Gil	Document update
July 2005	D. Gil	Document update
		NOTE: This is a transcription of the Madrid SPL for purposes of publishing within NSAA.

Related Drawings

Drawing No.	Title	Drawing No.	Title
TAA20650F	Terminations		

Related Documents

Document ID	Title
---	---

Subject Matter Expert

Name	Department
D. Gil	Innovation OEC-Madrid

About Spare Parts Leaflets...

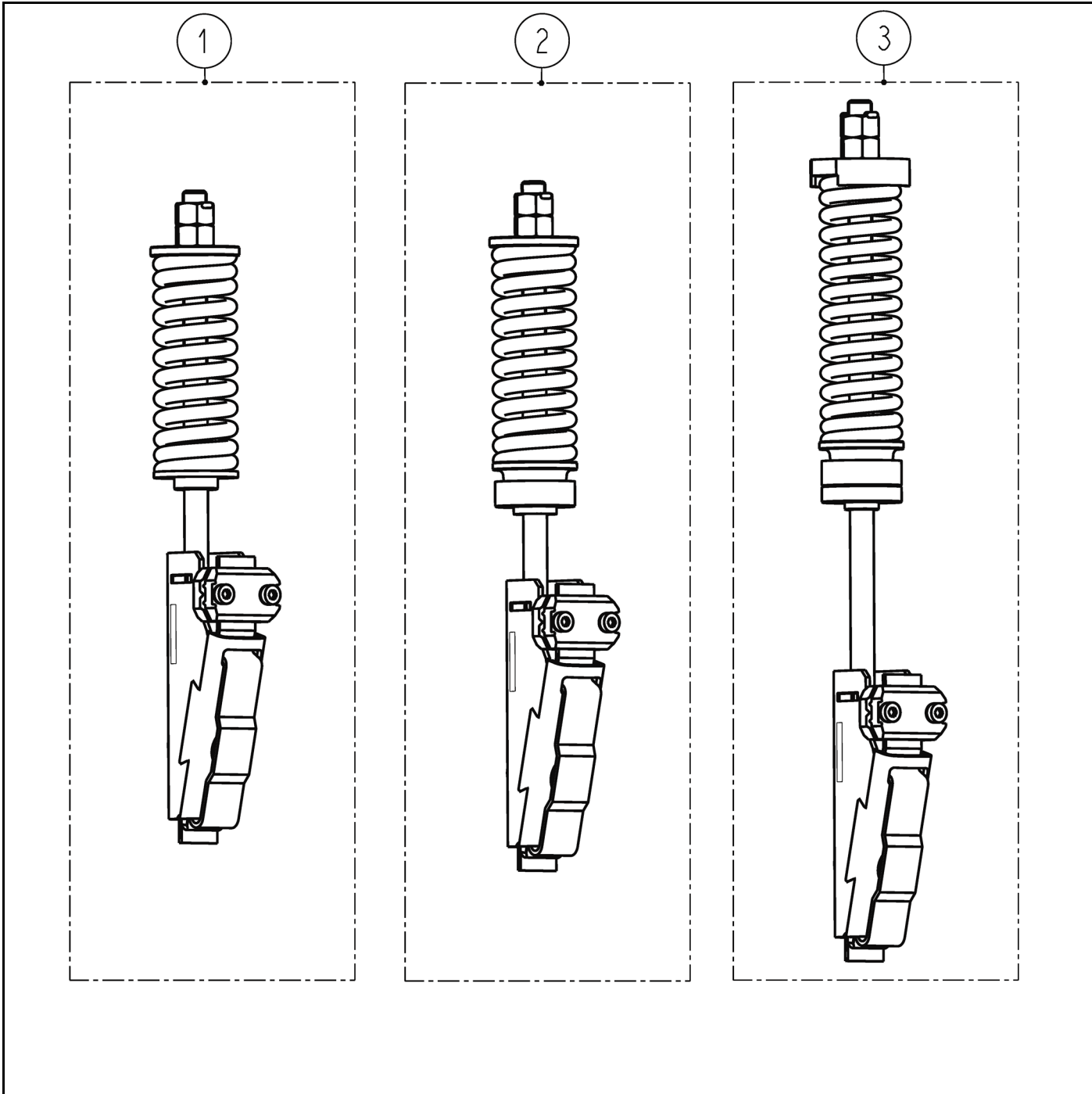
This document lists the lowest replaceable units (LRUs) for the standard version of the product. The LRUs are chosen by a team of Otis associates representing engineering and manufacturing.

While goal of this document is to make parts identification as easy as possible, the document cannot be all-inclusive. Elevator and escalator contracts classified as "special" or "custom" are not addressed here. For such contracts, please refer to specified information, the contract folder, TIPs, Field Education Articles, Construction Letters, etc. for further information.

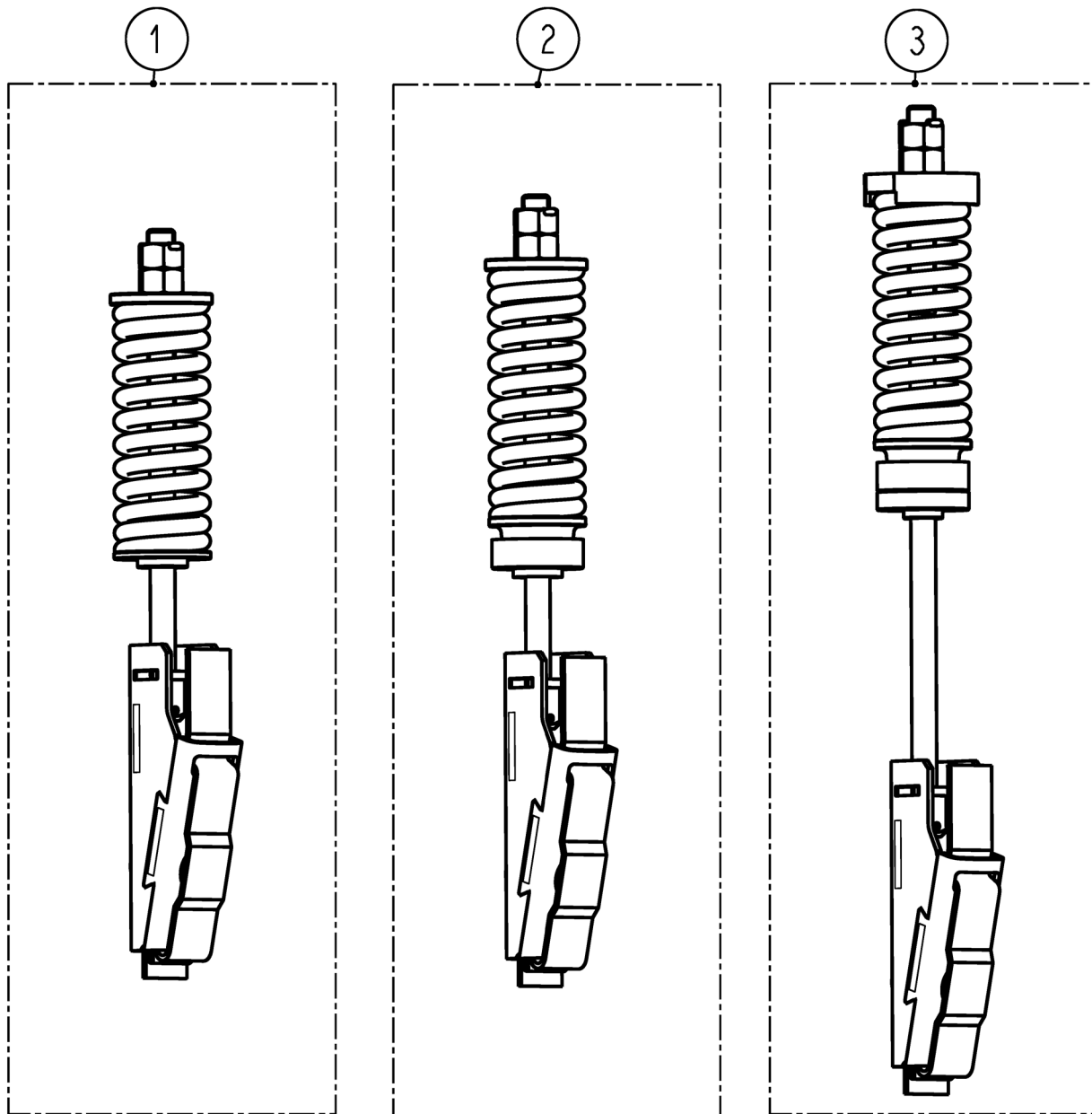
If you have any suggestions about this document, please contact the subject matter expert listed on this page.

TAA20650F Termination

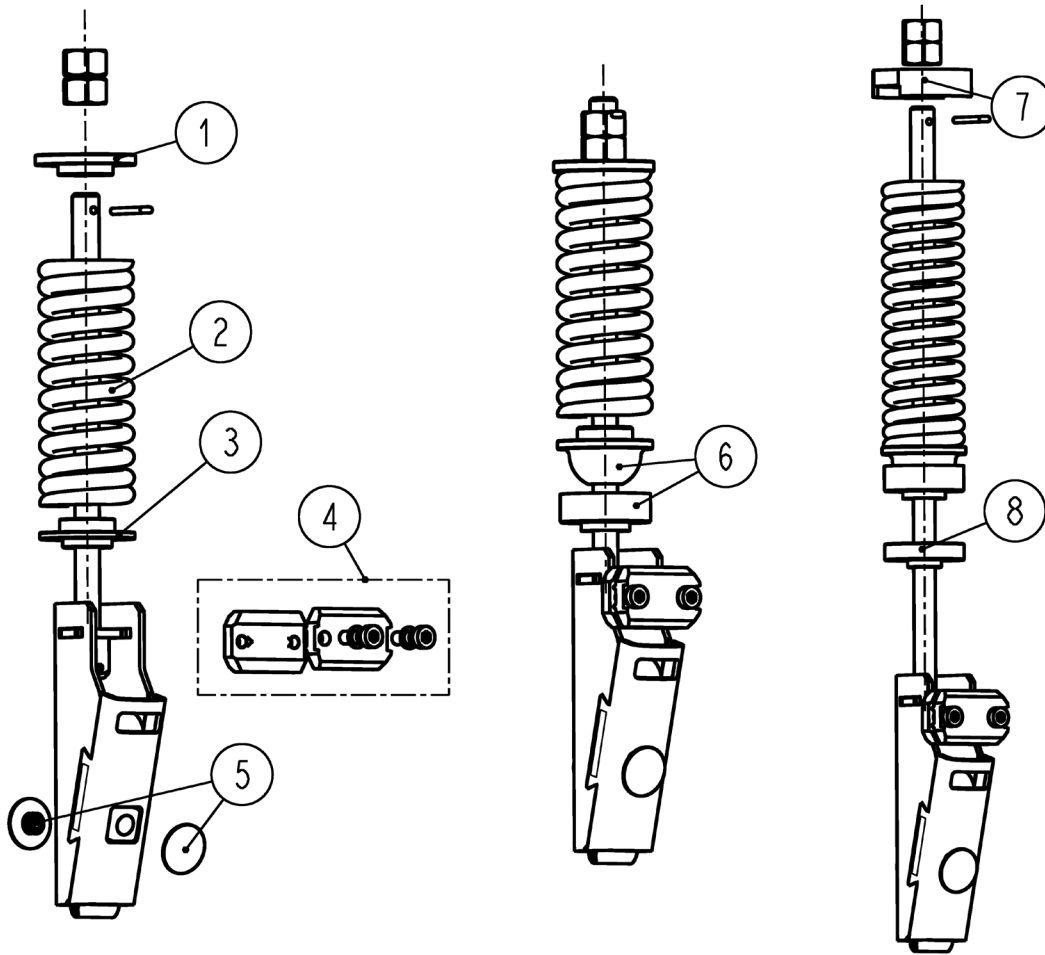
11-TAA20650F



REF. No.	PART No.	DESCRIPTION
1	TAA20650F11	Termination for Car Side without Ball Joint
	TAA20650F12	Termination for Cwt. Side without Ball Joint
2	TAA20650F13	Termination for Car Side with Ball Joint
	TAA20650F14	Termination for Cwt. Side with Ball Joint
3	TAA20650F15	Termination for Cwt. Side Units with Ball Joint for Gen2R1 Retrofit Units



REF. No.	PART No.	DESCRIPTION
1	TAA20650F16	Termination for Car Side without Ball Joint and without Clamp
	TAA20650F17	Termination for CWT. Side without Ball Joint and without Clamp
2	TAA20650F18	Termination for Car Side with Ball Joint and without Clamp
	TAA20650F19	Termination for CWT. Side with Ball Joint and without Clamp
3	TAA20650F20	Termination for CWT. Side with Ball Joint and Without Clamp (for Gen2R1 retrofit units)



(*) TAA27076EJ2: COATED FIRE CLIP / CLAMPS FOR RETROFIT MODERNIZATIONS WITH RBI

REF No.	PART or M.L.	W→	DESCRIPTION
1	TAA131AK1	TAA20650F11-F14, F16-F19	Washer
2	TAA90CG1	TAA20650F11, F13, F16, F18	Spring for Car Side
	TAA90CG2	TAA20650F12, F14, F15, F17, F19, F20	Spring for Cwt Side
3	TAA131AJ1	TAA20650F11, F12, F16, F17	Washer
4	TAA27076EJ1 TAA27076EJ2 (#)	TAA20650F11, F12, F13, F14, F15	Clamp
5	TAA444P1	TAA20650F11-F20	Plug
6	TAA392BJ1	TAA20650F13, F14, F15, F18, F19, F20	Hitch (ball joint)
	TAA392BK1		Hitch (ball joint) Base
7	FAA321J9	TAA20650F15-F20	Bushing
8	TAA131AL1	TAA20650F15-F20	Washer