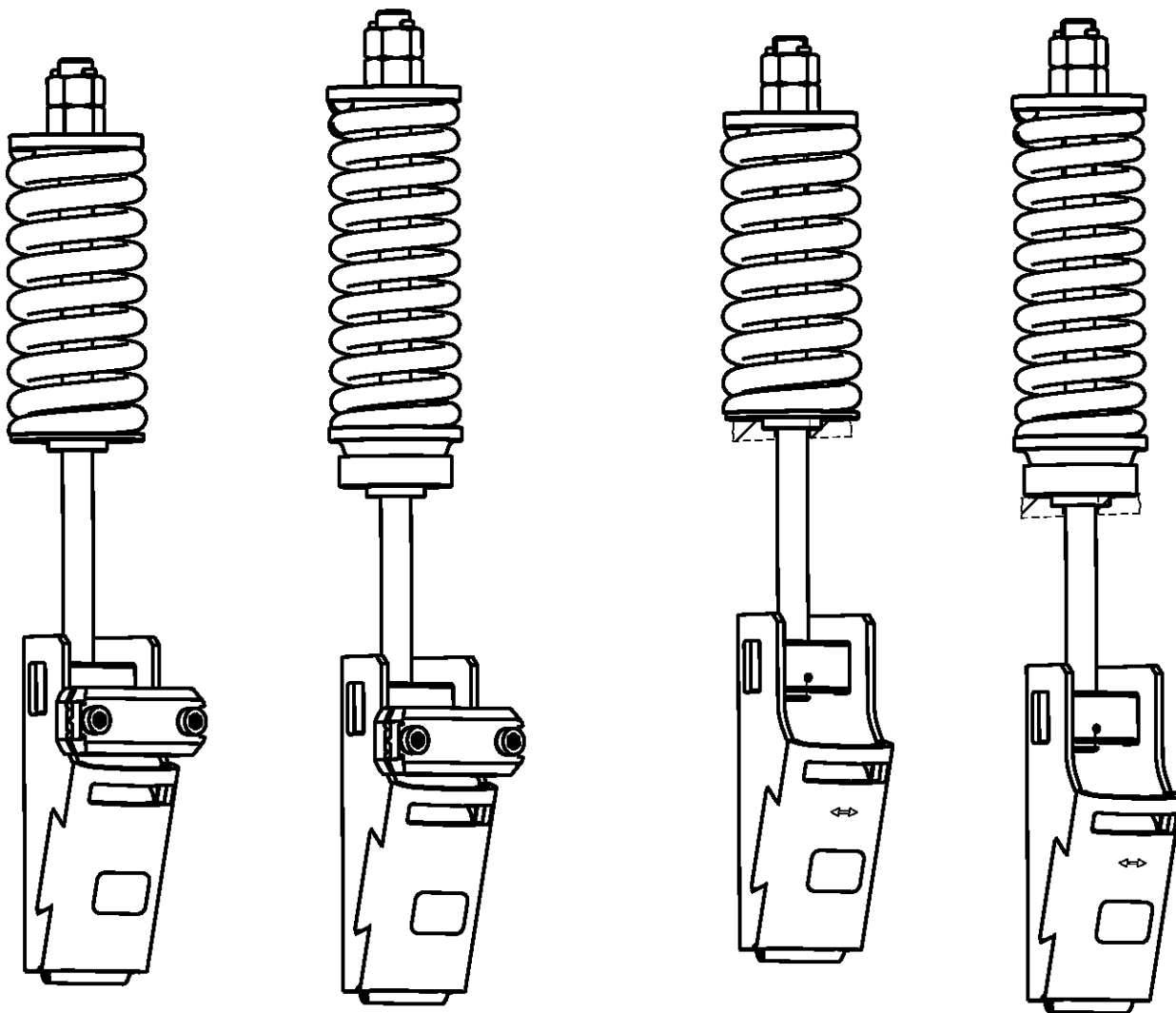


**Termination for Gen2
Model (64 kN)**

Spare Parts Leaflet

11-TAA20650H

July, 2005 / Page 1 of 5



Unpublished Work—© Otis Elevator Co.; 2003

OTIS

Safety First!

SERVICE ENGINEERING

Otis Elevator Company

Bloomfield, Connecticut USA

Leaflet Description

This leaflet provides spare parts information for TAA20650H terminations. These terminations have been specially designed for the 64 kN coated steel belts (CSB) with 60 mm width and 3 mm thickness.

Leaflet Revisions

Date Revised	Subject Matter Expert	Reason for Revision
April 2003	D. Gil	New Leaflet
July 2005	D. Gil	Document Update

Related Drawings

Drawing No.	Title	Drawing No.	Title
TAA20650H	Terminations		

Related Documents

Document ID	Title

Subject Matter Expert

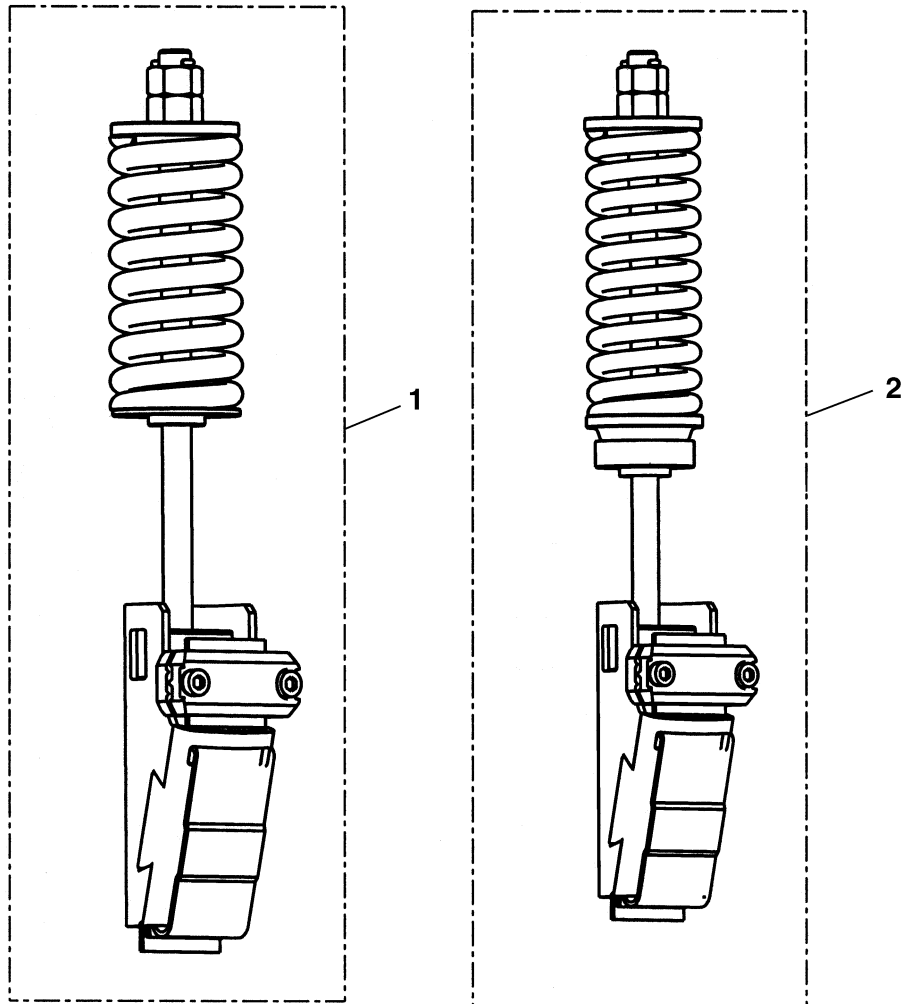
Name	Department
D. Gil	Innovation OEC—Madrid

About Spare Parts Leaflets...

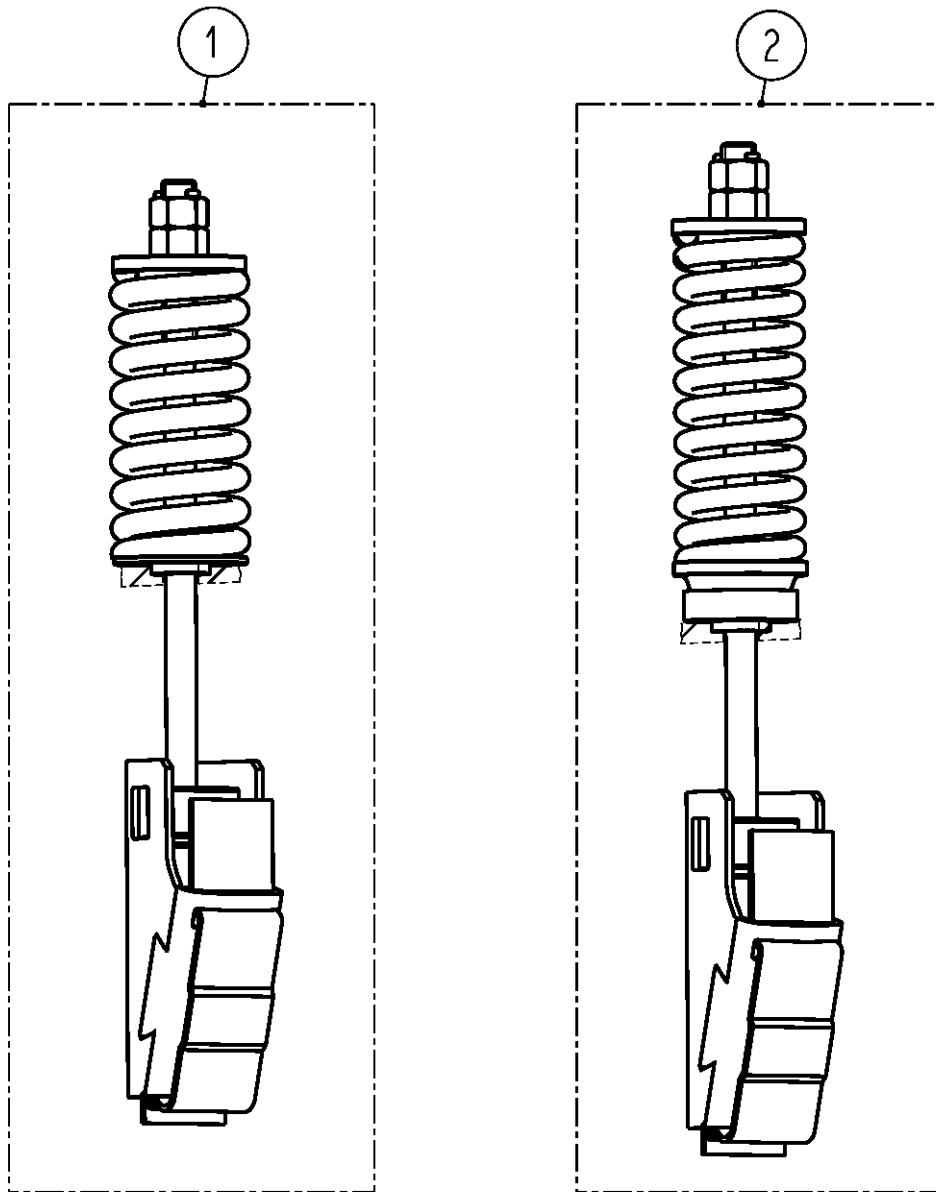
This document lists the lowest replaceable units (LRUs) for the standard version of the product. The LRUs are chosen by a team of Otis associates representing engineering and manufacturing.

While goal of this document is to make parts identification as easy as possible, the document cannot be all-inclusive. Elevator and escalator contracts classified as “special” or “custom” are not addressed here. For such contracts, please refer to specified information, the contract folder, TIPs, Field Education Articles, Construction Letters, etc. for further information.

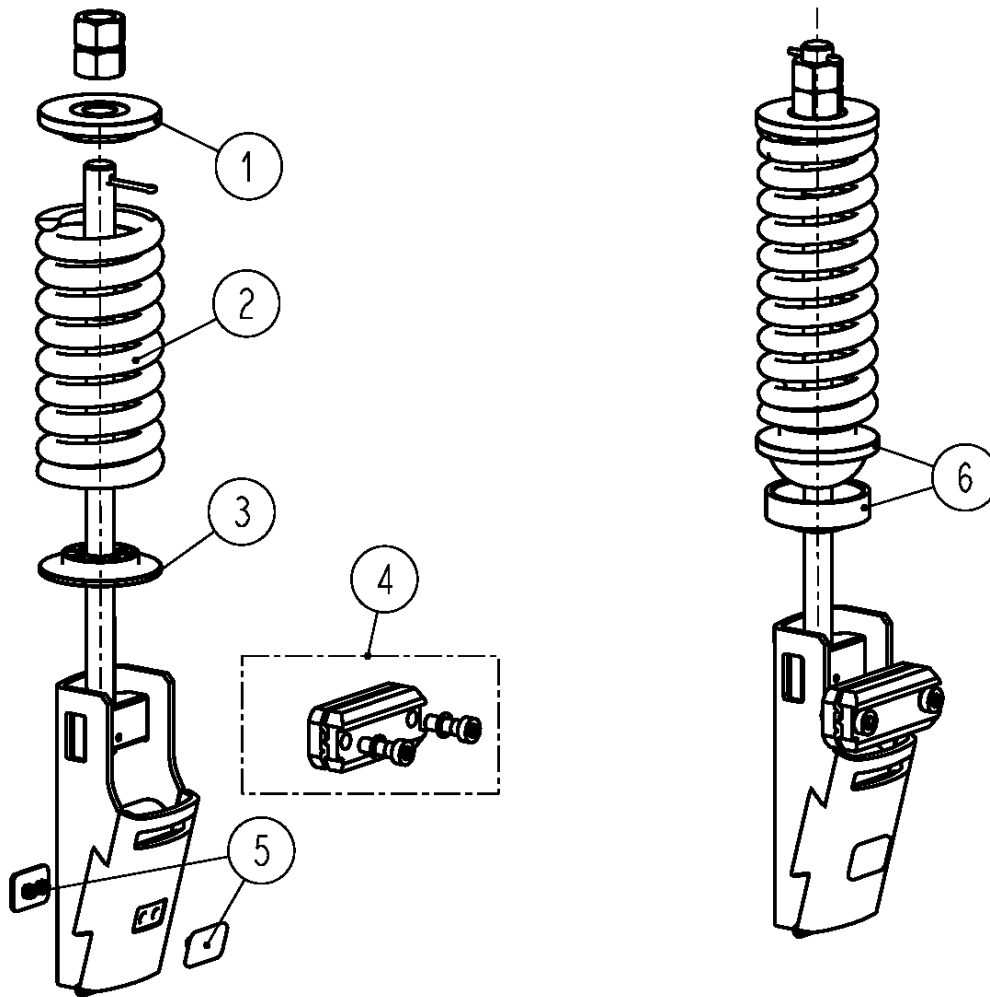
If you have any suggestions about this document, please contact the subject matter expert listed on this page.



REF. No.	PART No.	DESCRIPTION
1	TAA20650H1	Termination for Car Side without Ball Joint
	TAA20650H2	Termination for Cwt Side without Ball Joint
2	TAA20650H12	Termination for Cwt Side with Ball Joint



REF. No.	PART No.	DESCRIPTION
1	TAA20650H6	Termination for Car Side without Ball Joint and without Clamp
	TAA20650H7	Termination for CWT. Side without Ball Joint and without Clamp
2	TAA20650H17	Termination for CWT. side with Ball Joint and without Clamp
	TAA20650H19	Termination for CWT. side with Ball Joint and without Clamp (for ANSI low cost traction system)



(* TAA27076EK2: COATED FIRE CLIP / CLAMPS FOR RETROFIT MODERNIZATIONS WITH RBI

REF. No.	PART No.	W →	DESCRIPTION
1	TAA131AN1	TAA20650H1H2H6, H7, H12, H17, H19	Washer
2	TAA90CK1	TAA20650H1, H6	Spring for Car Side
	TAA90CK2	TAA20650H2, H7, H12, H17, H19	Spring for Cwt Side
3	TAA131AP1	TAA20650H1, H2, H6, H7	Washer
4	TAA27076EK1 TAA27076EK2 (#)	TAA20650H1, H2, H12	Clamps
5	(2) TAA444R1	TAA20650H1, H2, H6, H7, H12, H17, H19	Plug
6	TAA392BP1	TAA20650H12, H17, H19	Hitch (ball joint)
	TAA392BR1		Hitch (ball joint) Base