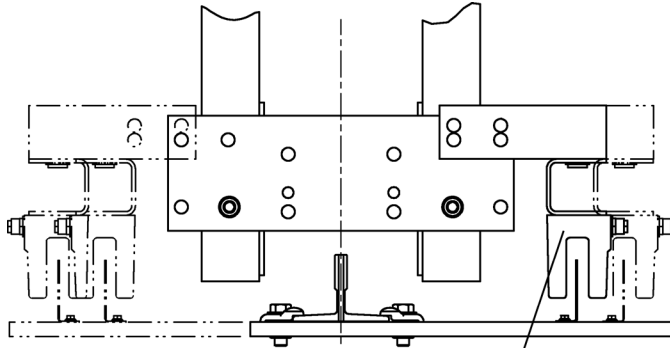


E411 Inductive Proximity Switch

Spare Parts Leaflet

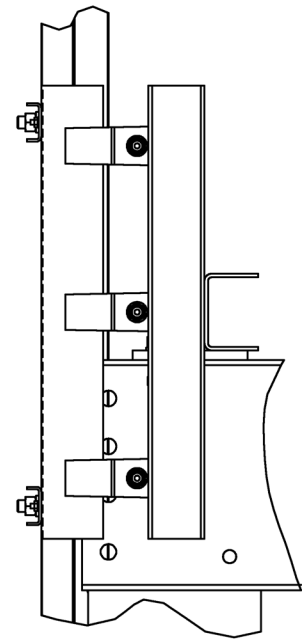
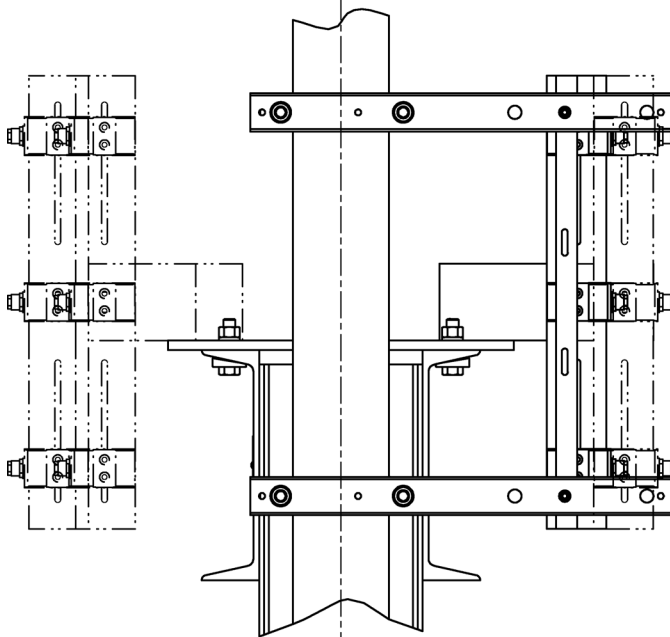
12-7145BH

March 25, 2009 / Page 1 of 3



W/O VINTAGE

Location of Inductive Sensor Switch



Unpublished Work—© Otis Elevator Co.; 2009

OTIS

Safety First!

SERVICE ENGINEERING
Otis Elevator Company
Bloomfield, Connecticut USA

Leaflet Description

This leaflet provides spare parts information for type 7145BH door sensor switch assemblies. The sensors are of the inductive class and they replace magnetic sensors.

Leaflet Revisions

Date Revised	Subject Matter Expert	Reason for Revision
March 25, 2009	Gary Mendrala	New SPL

Related Drawings

Drawing No.	Title	Drawing No.	Title
7145BH	Arrangement, Door Zone Sensor	A177DS	Inductive Proximity Sensor
7145BJ	Switch Assembly	---	---

Related Documents

Document ID	Title
SPL 12-7145D	Primary Position Transducer and Selector Tape System
TIP 2.3.2-1	LRV Position Device - Magnet Switch Interference
TIP 3.5.4-1	E411 Door Zone Sensor Installation and Adjustment

Subject Matter Expert

Name	Department
Gary Mendrala	OSC Service Engineering

About Spare Parts Leaflets...

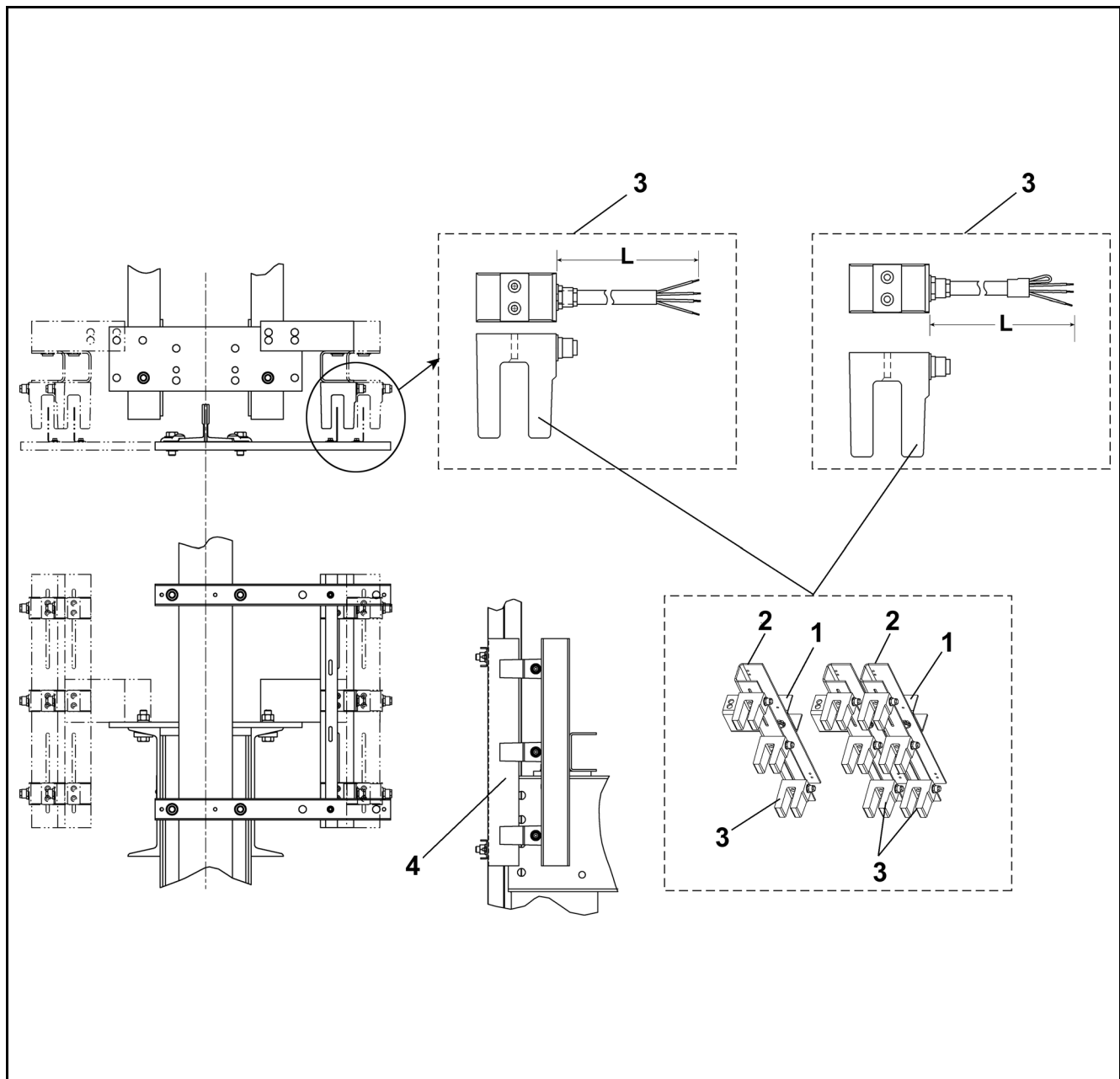
This document lists the lowest replaceable units (LRUs) for the standard version of the product. The LRUs are chosen by a team of Otis associates representing engineering and manufacturing.

While goal of this document is to make parts identification as easy as possible, the document cannot be all-inclusive. Elevator and escalator contracts classified as "special" or "custom" are not addressed here. For such contracts, please refer to specified information, the contract folder, TIPs, Field Education Articles, Construction Letters, etc. for further information.

If you have any suggestions about this document, please contact the subject matter expert listed on this page.

Door Sensor and Switch Assembly

12-7145BH



W/O VINTAGE		
REF. No.	PART No.	DESCRIPTION
1	A347AAK1	Channel, L= 8.7 in.
	A347AAK2	Channel, L= 13.7 in.
2	ABA347BJL1	Channel, L= 23.62 in.
3	A177DS1	Switch, Inductive Proximity Sensor, 4-Wire, L = 11,000 mm (433 in.)
	A177DS2	Switch, Inductive Proximity Sensor, 3-Wire, L = 1,000 mm (39.4 in.)
4	283ADM1	Vane