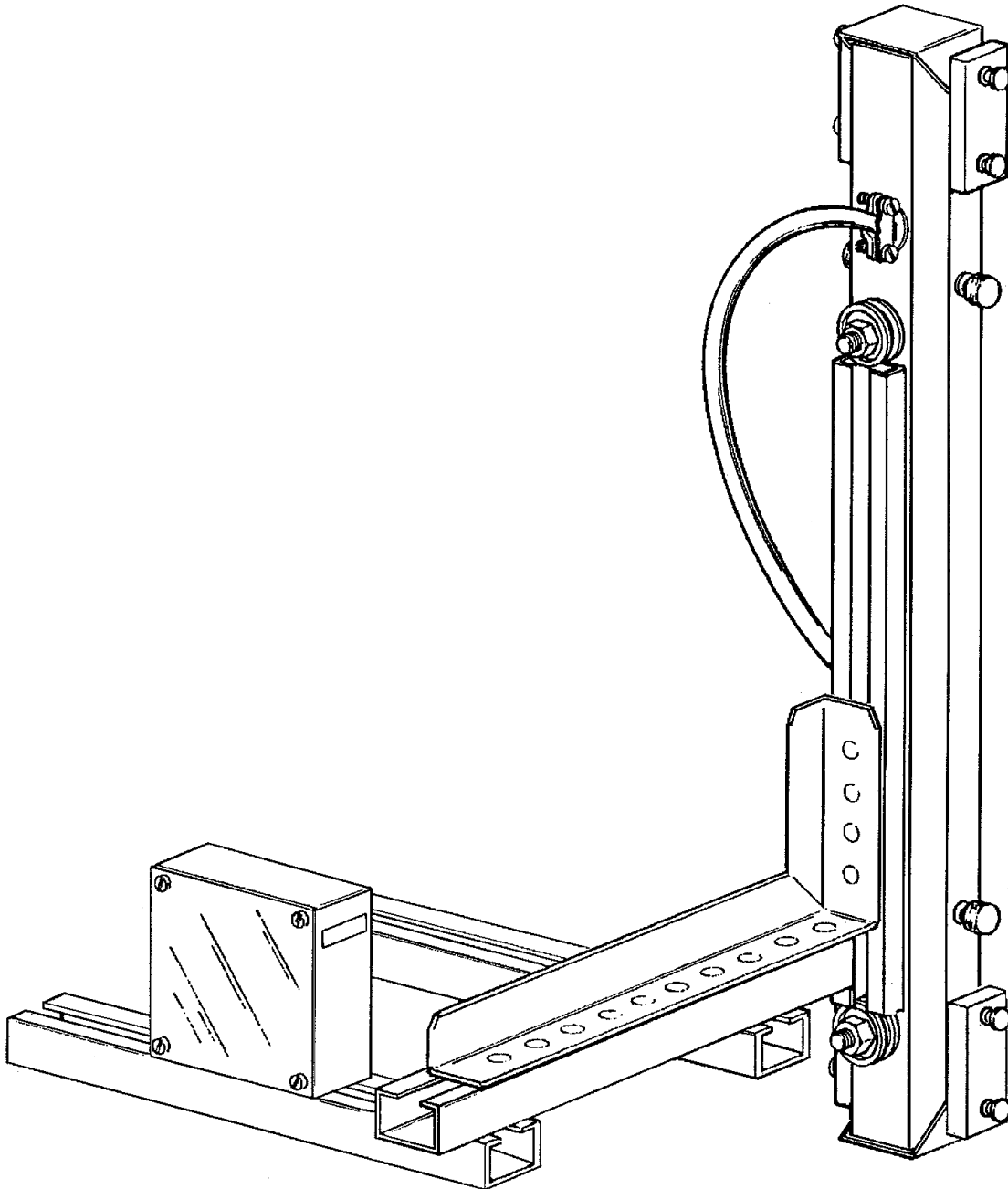


# SPT Floating Position Tape

**Spare Parts Leaflet**  
**12-AAA22439AAA**

November 13, 2013 / Page 1 of 7



Unpublished Work—© Otis Elevator Co.; 2013

**OTIS**

**Safety First!**

**SERVICE ENGINEERING**  
Otis Elevator Company  
Bloomfield, Connecticut USA

**Leaflet Description**

This leaflet provides lowest replaceable units (LRUs) for the SPT Floating Tape Position Device. The sensorhead assembly, control box, and floating tape each have specific pages.

**Leaflet Revisions**

<b>Date Revised</b>	<b>Subject Matter Expert</b>	<b>Reason for Revision</b>
March 1989	---	New Leaflet
April 1990	---	Updated Part Numbers
March 1995	---	Updated Part Numbers
June 1997	---	Added New part Numbers
October 1997	Ali Bozorgzadeh	Revised the part numbers; added history page
April 1998	Ali Bozorgzadeh	Corrected part numbers on page 7
November 2005	Ali Bozorgzadeh	Updated the SPL template; Corrected part numbers on page 7.
November 13, 2013	Gary Mendrala	Updated history page with correct SME information

**Related Drawings**

<b>Drawing No.</b>	<b>Title</b>	<b>Drawing No.</b>	<b>Title</b>
2700ABB	---	ACA22439AAA	Arrangement & Assembly Floating Tape Position Device
ABA22439AAA	Arrangement & Assembly Floating Tape Position Device	ABA22439AAC	Sensorhead Assembly
ABB22439AAA		ADA25500AAC	Control Box Assembly

**Related Documents**

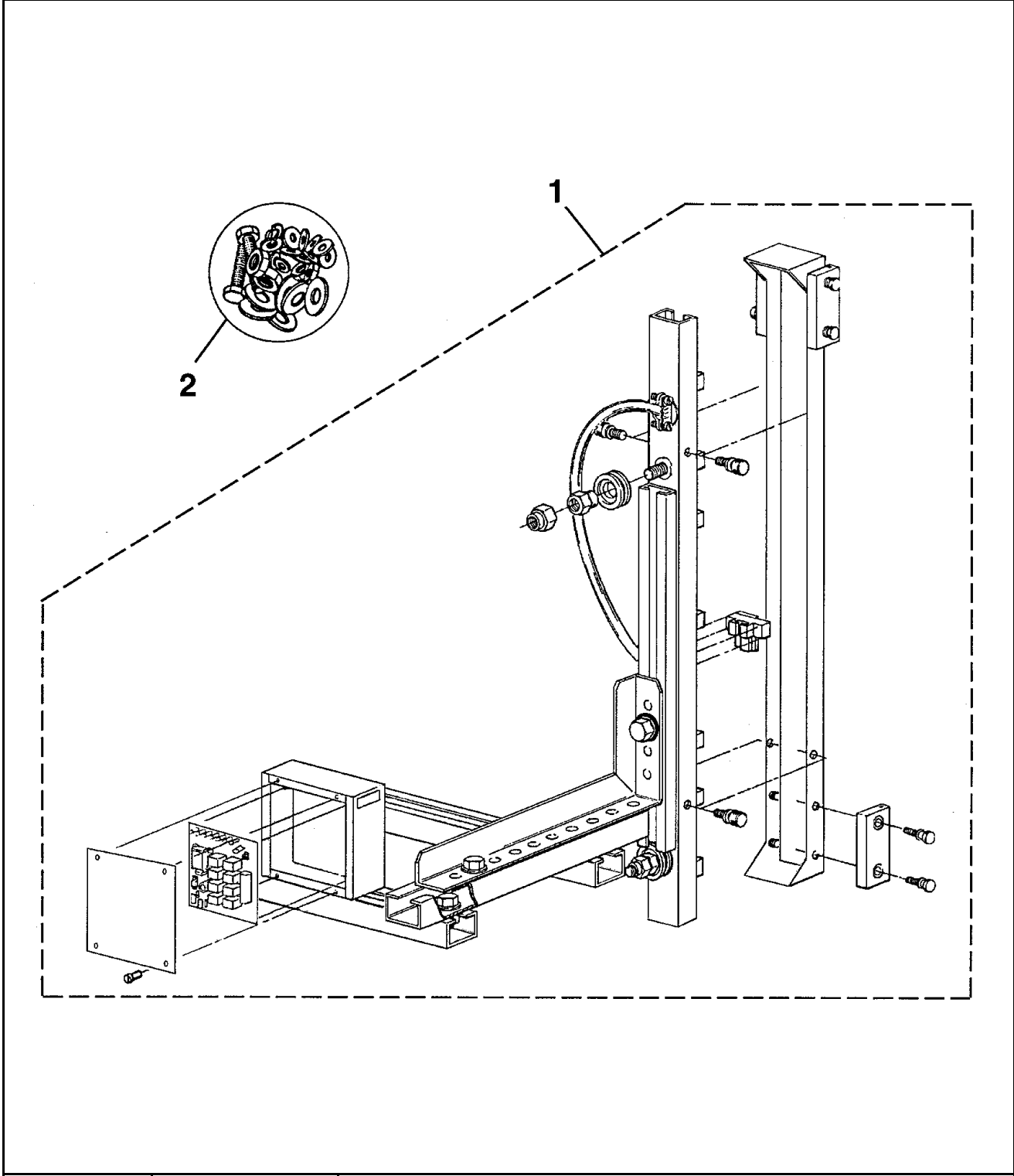
<b>Document ID</b>	<b>Title</b>
---	---

**Subject Matter Expert**

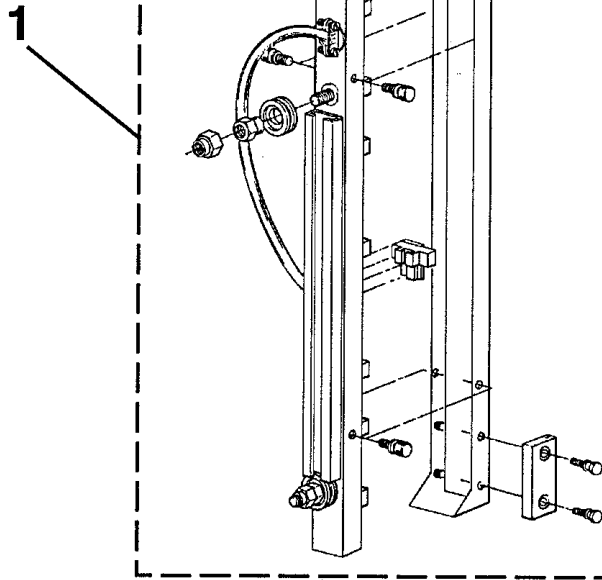
<b>Name</b>	<b>Department</b>
Gary Mendrala	OSC Service Engineering

**About Spare Parts Leaflets...**

This document lists the lowest replaceable units (LRUs) for the standard version of the product. The LRUs are chosen by a team of Otis associates representing engineering and manufacturing. While goal of this document is to make parts identification as easy as possible, the document cannot be all-inclusive. Elevator and escalator contracts classified as "special" or "custom" are not addressed here. For such contracts, please refer to specified information, the contract folder, TIPS, Field Education Articles, Construction Letters, etc. for further information. If you have any suggestions about this document, please contact the subject matter expert listed on this page.



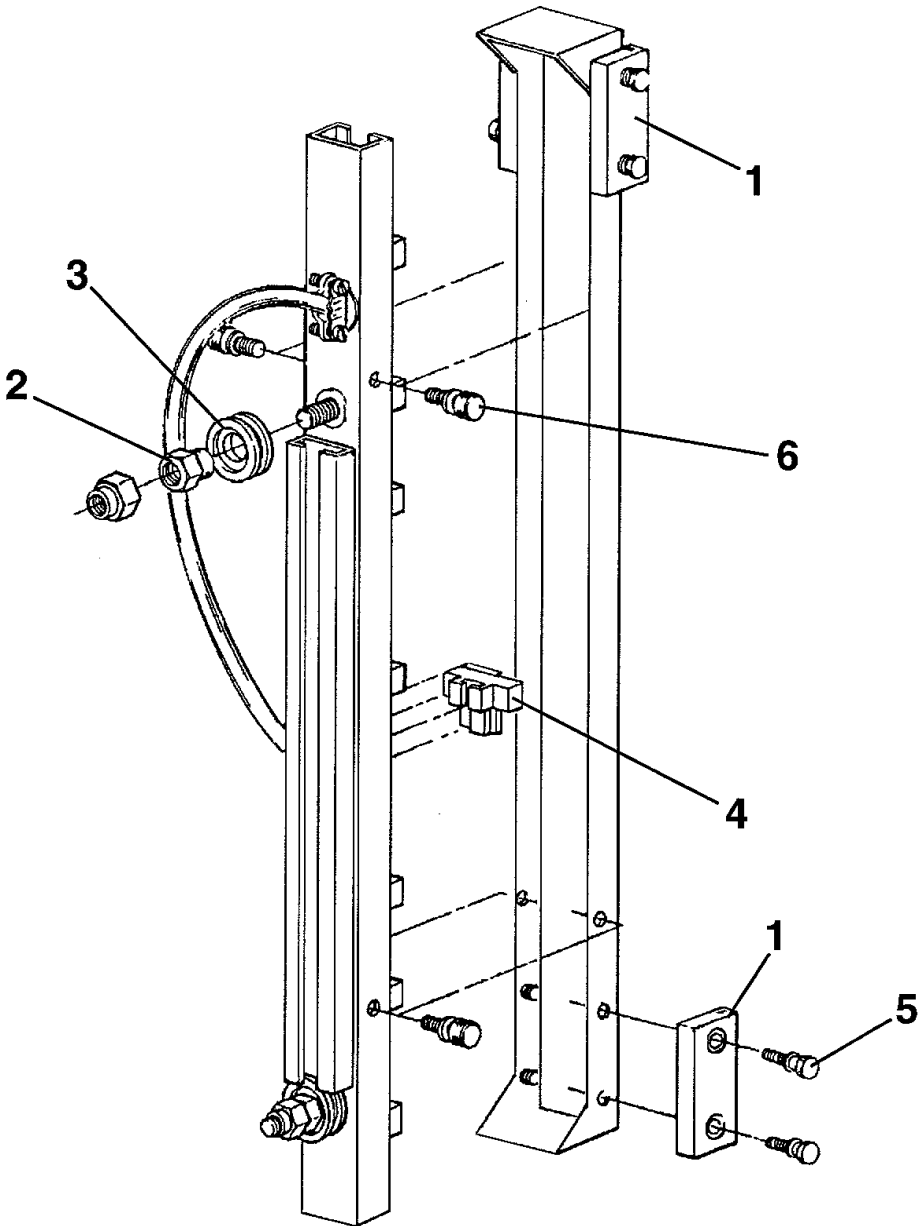
REF. No.	PART No.	DESCRIPTION
1	---	👁 Pages 4, 5 & 6
2	2700ABB1	Material List, Standard Parts Floating Tape Car Position Device



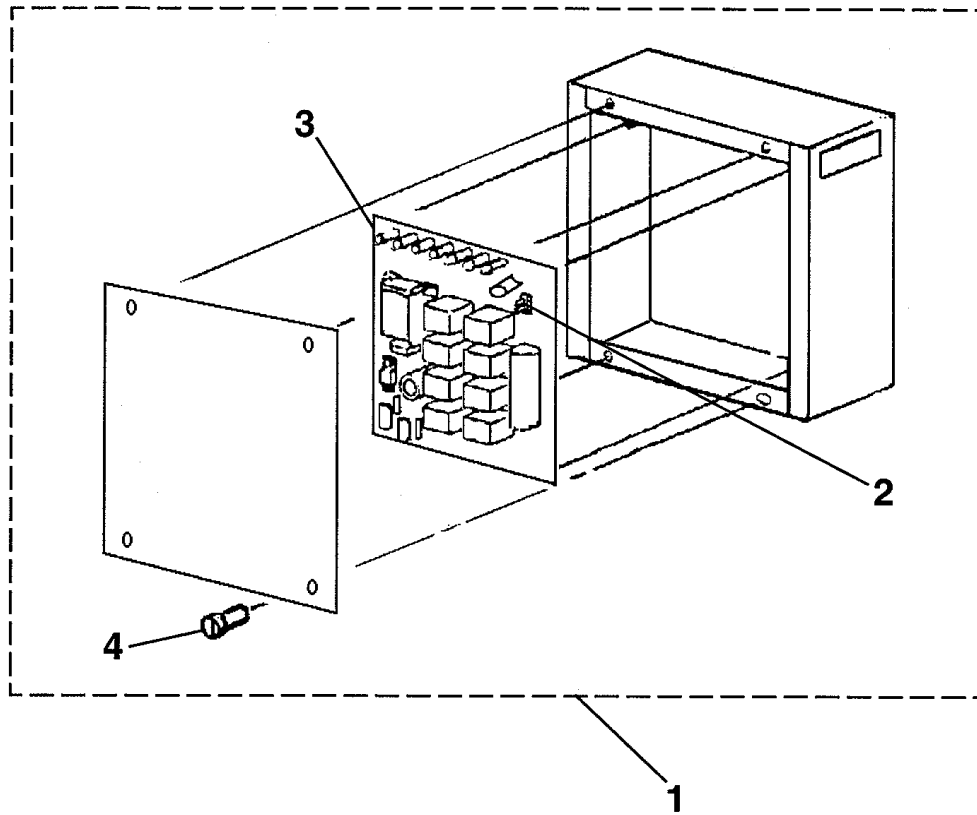
REF. No.	PART No.	DESCRIPTION
1	<del>AAA22439AAC001</del> <del>ABB22439AAC001</del> ABA22439AAC001	Assembly, Sensorhead, 401M(R) Elevator
	<del>AAA22439AAC002</del> <del>ABB22439AAC002</del> ABA22439AAC002	Assembly, Sensorhead, Gamma D Elevator
	<del>AAA22439AAC003</del> <del>AAB22439AAC003</del> ABA22439AAC003	Assembly, Sensorhead, Gamma D Elevator, w/Access Zoning
	<del>AAA22439AAC004</del> <del>AAB22439AAC004</del> ABA22439AAC004	Assembly, Sensorhead, 401M(R) Elevator w/Rear Doors
	<del>AAA22439AAC005</del> <del>AAB22439AAC005</del> ABA22439AAC005	Assembly, Sensorhead, Gamma D (Canada, B44 Code)
	<del>AAB22439AAC006</del> ABA22439AAC006	Assembly, Sensorhead, E411M® w/Rear Doors
	<del>AAB22439AAC007</del> ABA22439AAC007	Assembly, Sensorhead, E311M®
	<del>AAB22439AAC008</del> ABA22439AAC008	Assembly, Sensorhead, MCS 311
	<del>AAB22439AAC009</del> ABA22439AAC009	Assembly, Sensorhead, MCS 411 (XSL)
	<del>AAB22439AAC010</del> ABA22439AAC010	Assembly, Sensorhead, MCS 411 (SL)

# Sensorhead Assembly

12-AAA22439AAA



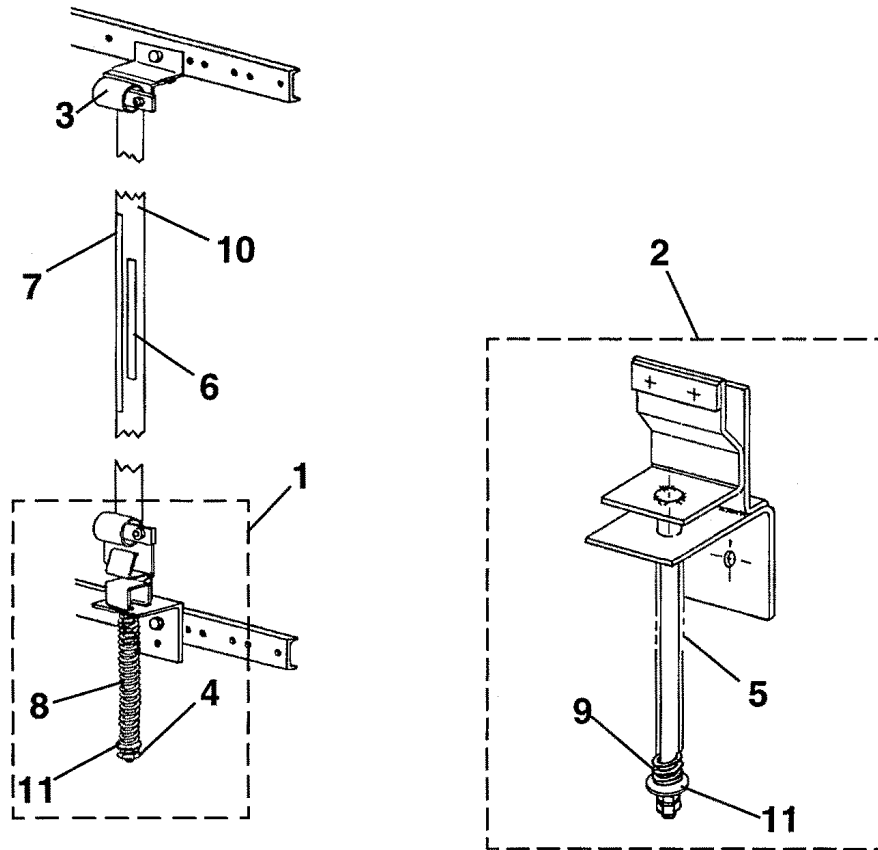
REF. No.	PART No.	DESCRIPTION
1	AAA00385AAA001	Guide, Tape
2	AAA00081AAA001	Pin, Eccentric
3	AAA00456AAA001	Roller
4	<del>AAA26800AAN001</del> <del>AAA26800AAN003</del> ABA26800AAN001	Sensor for Steel or Stainless Steel Tape
5	AAA00124AAA003	Thumbscrew for Tape Guide
6	AAA00124AAA001	Thumbscrew for Sensorhead Channel



REF. No.	PART No.	DESCRIPTION	ELEVATOR TYPE	DOORS
1	<del>A**25500AAC001</del> ADA25500AAC001	Assembly, Control Box	401M(R), Gamma D	Front & Rear
	<del>A**25500AAC002</del> ADA25500AAC002	Assembly, Control Box, w/Access Zoning & Canada	Gamma D	---
	<del>A**25500AAC003</del> ADA25500AAC003	Assembly, Control Box	401	Rear
	ADA25500AAC004	Assembly, Control Box	MCS 311/411	---
2	AAA375BF1	Fuse, 1/2 Amp		
3	<del>A*A26800AAP001</del> AEA26800AAP001	PC Board, Control Box PC	401M(R), Gamma D	---
	<del>A*A26800AAP002</del> AEA26800AAP001	PC Board, Control Box PC w/Access Zoning	Gamma D	---
	<del>A*A26800AAP003</del> AEA26800AAP003	PC Board, Control Box PC	401	Rear
	AEA26800AAP004	PC Board, Control Box PC	MCS 311/411	---
4	SCMA F8-32x1/2	Screw, Pan Head, 8-32, 1/2 in. Long		

# Floating Tape

**12-AAA22439AAA**



	<b>ABA22439AAA</b>	<b>ABB22439AAA ACA22439AAA</b>		
<b>REF. NO.</b>	<b>PART or ML</b>		<b>DESCRIPTION</b>	
1	AAA00316FAV004	---	Assembly, Tape Clamp, Lower <table border="1" style="display: inline-table; vertical-align: middle;"><tr><td>ORDER</td></tr></table> Ref. 2	ORDER
ORDER				
2	---	AAB00316FAV002	Assembly, Tape Clamp, Lower	
3	AAA00316FAT001		Assembly, Tape Clamp, Upper	
4	AAA65FS1	---	Bolt, Carriage, 12.0 in. L	
5	---	AAA65FS2	Bolt, Carriage, 9.0 in. L	
6	AAA233J29		Magnet, North, 19.5 in. L	
	AAA233J31		Magnet, North, 6.0 in. L	
7	AAA233J30		Magnet, South, 19.5 in. L (Wavy Line Marked to )	
	AAA233J32		Magnet, South, 6.0 in. L (Wavy Line Marked to )	
8	90BF3	---	Spring, 10.0 in. Free Length	
9	---	90BF4	Spring, 6.0 in. Free Length	
10	AAA00279AAA002		Tape, Stainless Steel	
	AAA00279AAA004		Tape, Stainless Steel w/Holes	
	AAA00279AAA001		Tape, Steel	
	AAA00279AAA003		Tape, Steel, w/Holes	
11	127VB61		Washer, Special	