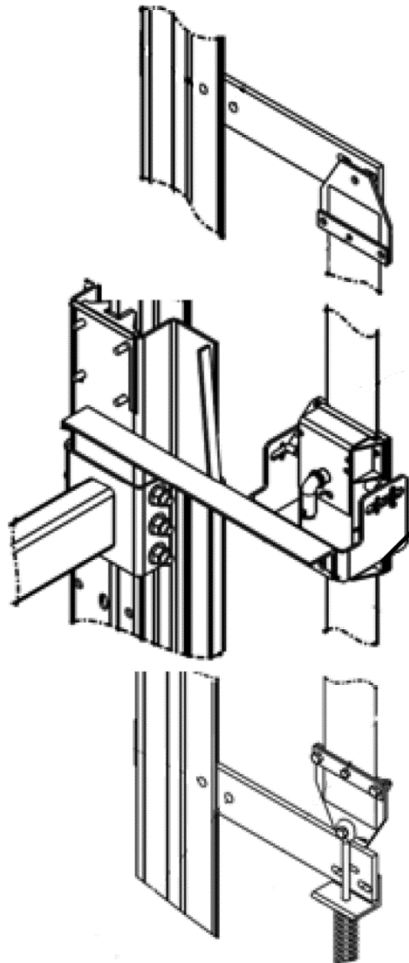


Tape Reader Assembly (HydroFit® / HydroAccel®)

Spare Parts Leaflet

12-AAA22439AC

January 22, 2020 / Page 1 of 4



W/O VINTAGE

12	A - ABA22439AC
12	A - ABA25550P

OTIS

This document does not contain any
technical data subject to EAR or ITAR

SERVICE ENGINEERING

Otis Elevator Company

Bloomfield, Connecticut USA

Unpublished Work—© Otis Elevator Co.; 2020

Leaflet Description

This leaflet provides spare parts information for the tape reader assemblies used with GCS hydraulic control system for HydroFit® and HydroAccel.

Leaflet Revisions

Date Revised	Subject Matter Expert	Reason for Revision
August 14, 2013	Taye Gebrewold and John Kleine	New SPL
October 23, 2013	Taye Gebrewold and John Kleine	Updated NOTE on p. 3
November 13, 2013	Gary Mendrala	Updated history page with SME information
January 22, 2020	Gary Mendrala	Added bracket and rails clip on p. 4

Related Drawings

Drawing No.	Title	Drawing No.	Title
AAA21242E	Holeless Hydro Controller Assembly and Arrangement	AAA25590AJ	HydroFit® Limit Switch Assembly
AAA22439AF	HydroFit™ Installation Assembly GCS Hydro Tape Reader	AAA22440K	HydroFit® Position Reference System GCS Hydraulic (Holeless & Telescopic)
AAA25550P	HydroFit® Tape Reader	AAA22440K-FMI	HydroFit® Position Reference System GCS Hydraulic (Holeless & Telescopic) Field Micro Instruction
AAA21600GW	HydroFit® Tape Reader Electrical Cable	AAA22440K	Position Reference System
AAA22439AF	Tape Reader	AAA25550P	Tape Reader

Related Documents

Document ID	Title
SPL 05-AAA25590AJ	HydroFit® Limit Switch Assembly
AAA21242F	HydroFit® System Wiring Diagram
AAA21242F-CMS	HydroFit® Construction Startup FMI
AAA21242F-SA	HydroFit® Adjusting FIM

Subject Matter Expert

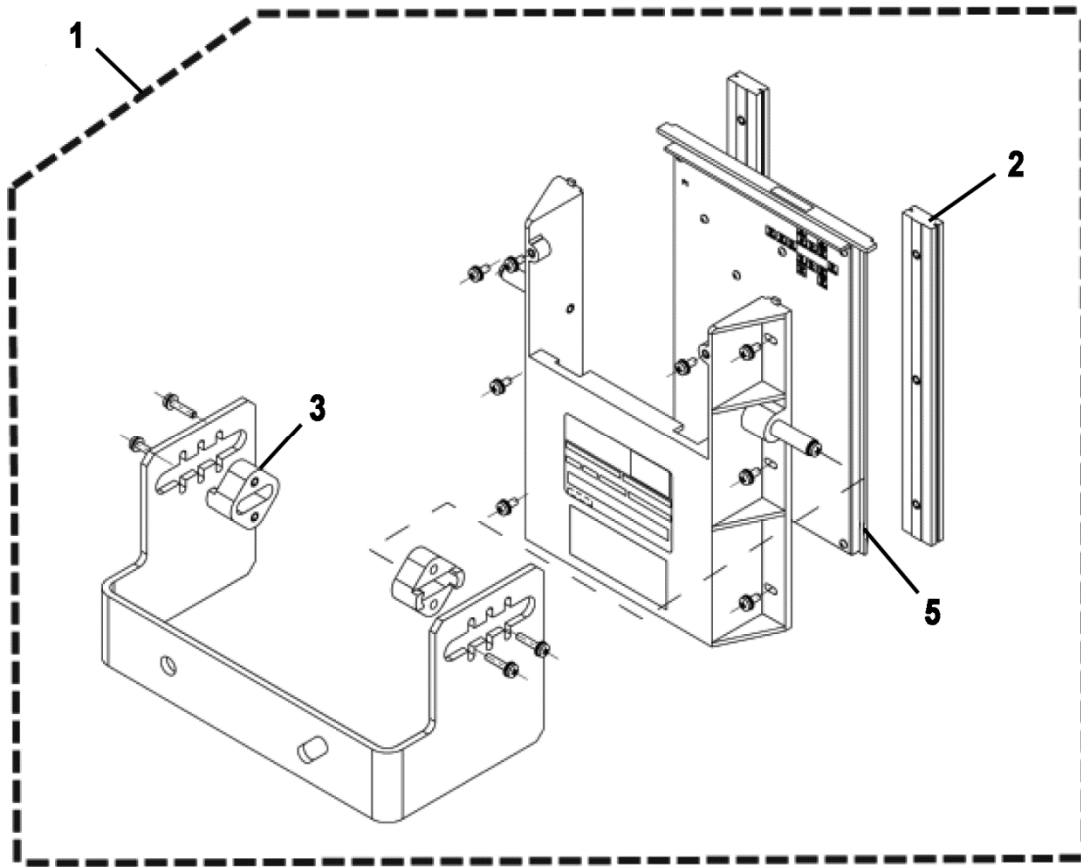
Name	Department
Gary Mendrala	OSC Service Engineering

About Spare Parts Leaflets...

This document lists the lowest replaceable units (LRUs) for the standard version of the product. The LRUs are chosen by a team of Otis associates representing engineering and manufacturing. While goal of this document is to make parts identification as easy as possible, the document cannot be all-inclusive. Elevator and escalator contracts classified as "special" or "custom" are not addressed here. For such contracts, please refer to specified information, the contract folder, TIPs, Field Education Articles, Construction Letters, etc. for further information. If you have any suggestions about this document, please contact the subject matter expert listed on this page.

Tape Reader for HydroFit™

12-AAA22439AC

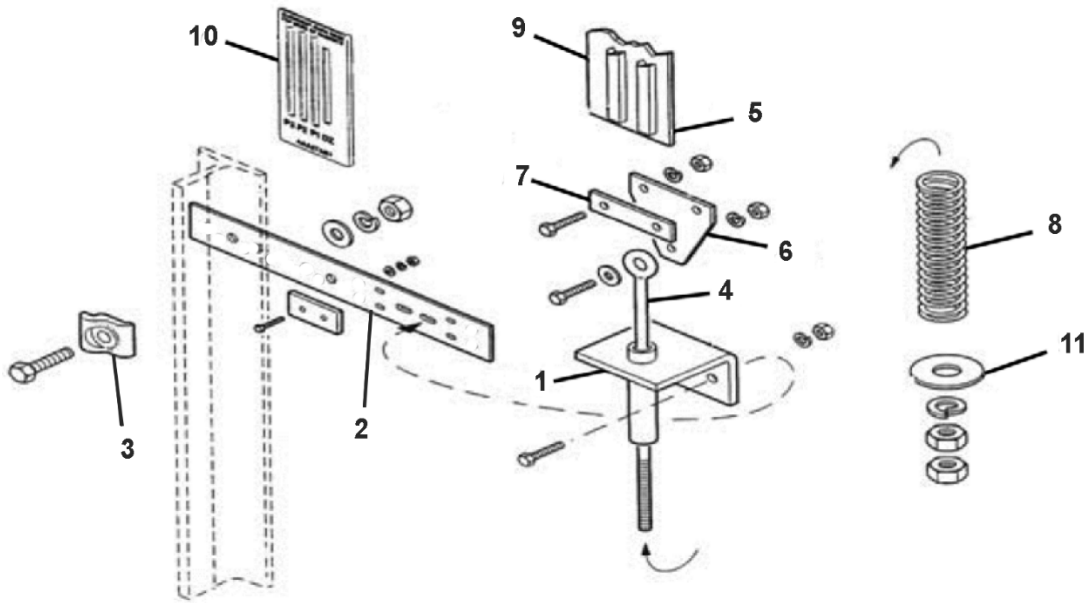


AAA22439AC
ABA22439AC
AAA25550P
ABA25550P

REF. No.	PART No.	DESCRIPTION
1	AAA22439AC1	Assembly, Tape Reader, GCS Hydro w/ AZL (NOTE)
	ABA22439AC1	Assembly, Tape Reader, GCS Hydro w/ AZL1 and AZL2
2	ABA385AAC1	Guide, Tape
3	AAA385PY1	Guide, Tape Reader
4*	AAA176HH376	Plug, Connector, P1 16-Position
	AAA176HH381	Plug, Connector, P1 17-Position (NOTE)
5	AAA22439AD1	Sub-Assembly, Tape Reader, GCS Hydro w/ AZL (NOTE)
	ABA22439AD1	Sub-Assembly, Tape Reader, GCS Hydro w/ AZL1 and AZL2

* Part not shown.

NOTE: When replacing AAA22439AC1 (item 1) or AAA22439AD1 (Item 5), item 4 must be ordered.



AAA22439AF
ABA22439AF
AAA22440K
ABA22440K

REF. No.	PART No.	DESCRIPTION
1	272FC108	Angle, Lower Tape
2	AAA316JLS1	Bracket
*	AAA329CE1	Cap
3	339E1	Clip, Rail #2
4	65GB9	Eye-Bolt
5	AAA233J34	Magnet, South Polarity (ID by straight line groove), 127 mm L (w/ acrylic based adhesive), NOTES 1 and 2
	AAA233J35	Magnet, South Polarity (ID by straight line groove), 152.4 mm L (w/ acrylic based adhesive), NOTES 1 and 2
	AAA233J36	Magnet, North Polarity, 127 mm L (w/ acrylic based adhesive), NOTES 1 and 2
6	AAA386KXH3	Plate
7	AAA386KXG3	Plate
8	90FC5	Spring
9	AAA297AV4	Tape, Stainless Steel, 150 mm W, L = Rise + 6500 mm
	AAA297AV3	Tape, Steel, 150 mm W, L = Rise + 6500 mm
10	AAA27ES1	Tool, Magnet Alignment (door zone and slowdown)
	AAA27ER1	Tool, Magnet Alignment (terminal limits)
11	127VB149	Washer, Flat
*	HC0998	Wipes, Alcohol (required with Ref. 5)
	VP-420422	Wipes, Alcohol, (required with Ref. 5), NOTE 3

* Part not shown.

NOTE 1: Alcohol wipes can be used for cleaning the tape.

NOTE 2: For hoistway magnet position, refer to ABA22440K-FMI.

NOTE 3: The box contains 50 wipes. Each wipe is 6 in. x 6 in.