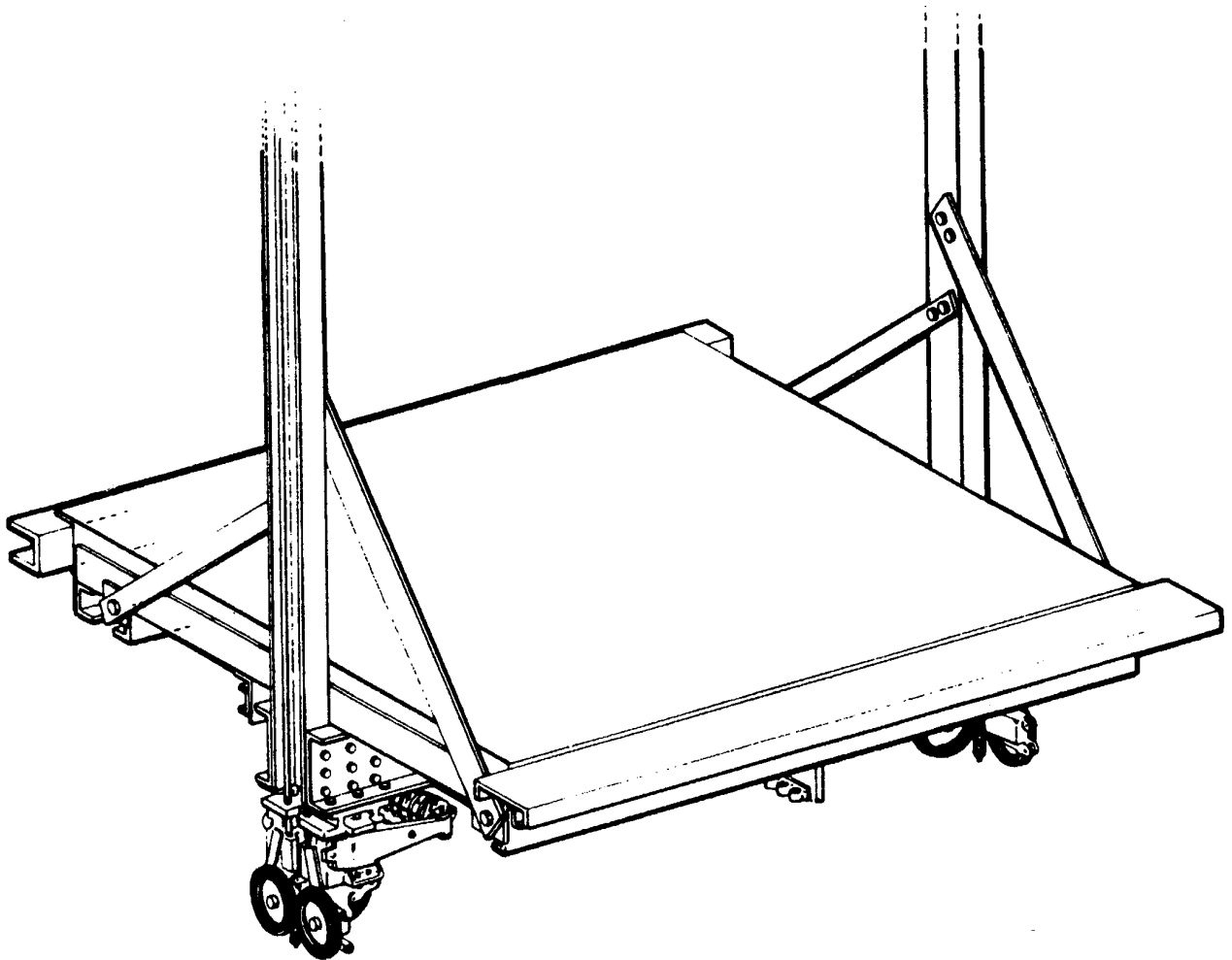


# Platform Sound Isolation

**Spare Parts Leaflet**

**14-6183AE**

**March 13, 2024 / Page 1 of 10**



# OTIS

This document contains technical data  
subject to EAR. ECCN=EAR99

**SERVICE ENGINEERING**  
**Otis Elevator Company**  
**Bloomfield, Connecticut USA**

Unpublished Work—© Otis Elevator Co.; 2024

# History

14-6183AE

## Leaflet Description

This leaflet describes the various sound isolation blocks used with Otis platforms. The two main methods for identification are by physically comparing field parts with those shown on page three of this leaflet, or by the platform type, if known. Machine records are also a valid source for identification. Some isolation blocks are color coded. This feature may be used to confirm correct selection of the appropriate block when used with the above method.

It should be noted that the quantities of isolation blocks given in this leaflet, are per platform and for standard arrangements. Actual quantities may vary based on a second entrance, non-standard architectural materials, or other special configurations. Therefore, the quantity required should be verified prior to ordering, if possible.

## Leaflet Revisions

Date Revised	Subject Matter Expert	Reason for Revision
July 1, 1999	Troy Chicoine	New SPL
January 1, 2000	Troy Chicoine	Fix measurement on p. 3, ref. 2.
March 13, 2024	Juan Murillo	Add bumper 320BE4.

## Related Drawings

Drawing No.	Title	Drawing No.	Title
A6183AF		A6183BS	
6183AM		6183BY	
6183AP		6183CC	
6183AY		6183CE	
6183BA		B6183DS	
6183BN			

## Related Documents

Document ID	Title
17-6183CD	Load Weighing Transducer, Elevonic 101/401
17-6934B	Microswitch Load Weighing Device

## Subject Matter Expert

Name	Department
Juan Murillo	Service Engineering

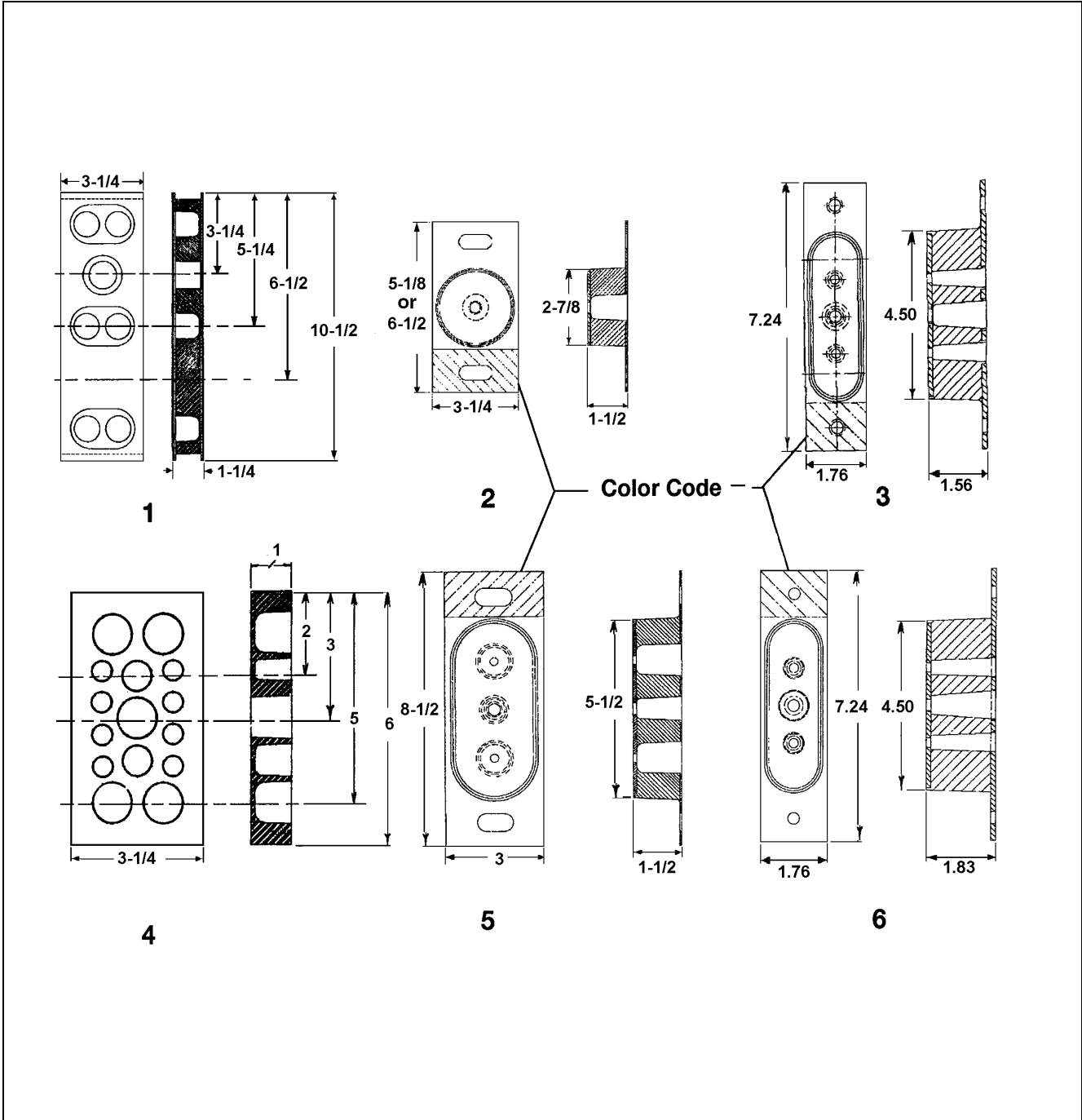
This document lists the lowest replaceable units (LRUs) for the standard version of the product. The LRUs are chosen by a team of Otis associates representing engineering and manufacturing.

While goal of this document is to make parts identification as easy as possible, the document cannot be all-inclusive. Elevator and escalator contracts classified as “special” or “custom” are not addressed here. For such contracts, please refer to specified information, the contract folder, TIPs, Field Education Articles, Construction Letters, etc. for further information.

If you have any suggestions about this document, please contact the subject matter expert listed on this page.

# Isolation Block Identification

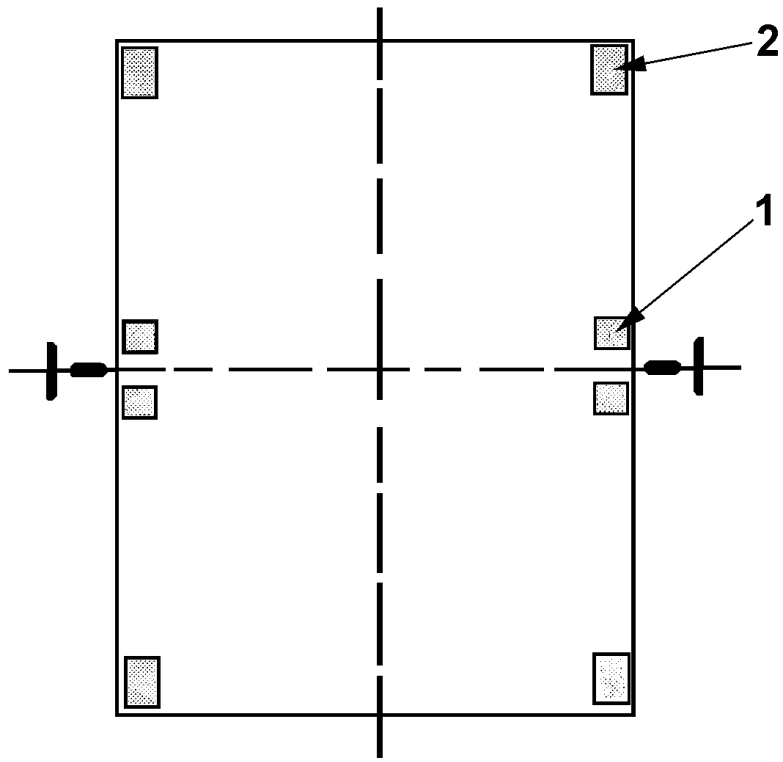
**14-6183AE**



REF. No.	PART No.	DESCRIPTION
1	310DP	See p. 5
2	A310JF	See p. 6 & 7
3	310KS	See p. 8 & 9
4	310WB	See p. 4
5	A310HD	See p. 6 & 7
6	AAA310QM	See p. 9

# Type 6182AE Platform

**14-6183AE**



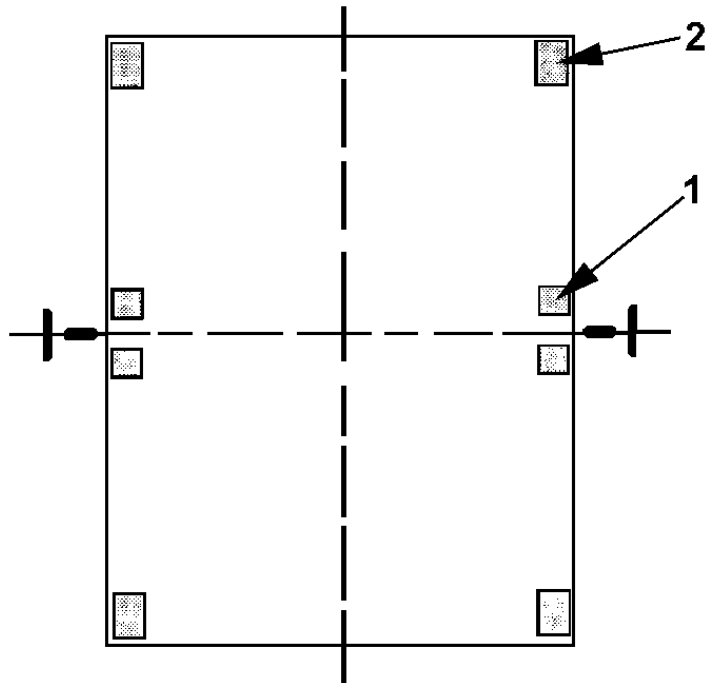
Front of Platform

Types I & II

<b>TYPE I</b>	<b>VINTAGE</b>	<b>W/O LOAD WEIGHING</b>		
<b>REF. No.</b>	<b>PART No.</b>	<b>DESCRIPTION</b>	<b>DUTY</b>	<b>QTY.</b>
1	310WB3	Block, Center	< 2500 #	4
			3001 # - 4500 #	
2	310WB2	Block, Center	2501 # - 3000 #	4
	310WB3	Block, Corner	< 750 #	4
			751 # - 2500 #	4
310WB2	Block, Corner	3001 # - 4500 #	8	
*	310WB1	Block, Corner	2501 # - 3000 #	4
			255EB6	Shim, 0.03 in. Thick

# Type 6183AE Platform

**14-6183AE**

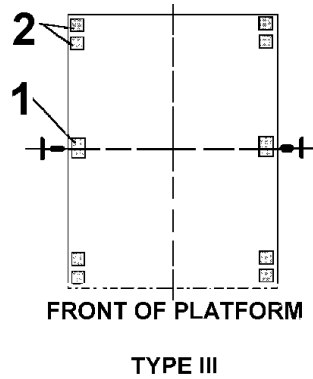


**Front of Platform  
Types I & II**

<b>TYPE II</b>	<b>VINTAGE</b>	<b>W/ TYPE 6934B LOAD WEIGHING DEVICE</b>		
<b>REF. No.</b>	<b>PART No.</b>	<b>DESCRIPTION</b>	<b>DUTY</b>	<b>QTY.</b>
1	310DP5	Block, Center	< 2500 #	4
			2501 # - 3000 #	
	310DP2	Block, Center	3001 # - 4500 #	
2	310DP2	Block, Corner	< 2500 #	
	310DP1	Block, Corner	2501 # - 3000 #	
	310DP4	Block, Corner	3001 # - 4500 #	
*	255EB6	Shim, 0.03 in. Thick		As Needed

# Type 6183AE Platform

**14-6183AE**

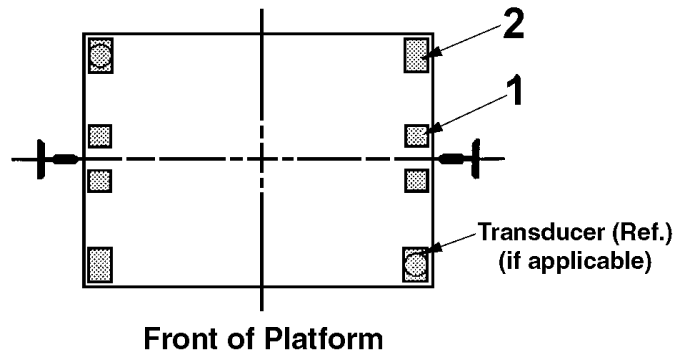


TYPE III	VINTAGE	W/ OR W/O TYPE 6934B LOAD WEIGHING DEVICE			
REF. No.	PART No.	DESCRIPTION	DUTY	QTY.	COLOR CODE
1	A310JF1	Block, Center	2000 #	2	Green
	A310JF2	Block, Center	2500 #	2	Yellow
	A310JF3	Block, Center	3000 #	2	Red
	A310JF4	Block, Center	5001 # - 6000 #	4	Red
	A310HD1	Block, Center	3500 #	2	Green
	A310HD2	Block, Center	4000 #	2	Yellow
	A310HD3	Block, Center	5000 #	2	Red
2	A310JF1	Block, Corner	2000 #	4	Green
	A310JF2	Block, Corner	2500 #	4	Yellow
	A310JF3	Block, Corner	3000 #	4	Red
		Block, Corner	5001 # - 6000 #	8	Red
	A310HD1	Block, Corner	3500 #	4	Green
	A310HD2	Block, Corner	4000 #	4	Yellow
	A310HD3	Block, Corner	5000 #	4	Red
*	255DK1	Shim, Center, 0.06 in. Thick	2000 # - 3000 #	As Needed	
	255DK3	Shim, Center, 0.06 in. Thick	5001 # - 6000 #		
	255DK5	Shim, Center, 0.06 in. Thick	3500 # - 5000 #		
	255DK2	Shim, Center, 0.03 in. Thick	2000 # - 3000 #		
	255DK4	Shim, Center, 0.03 in. Thick	5001 # - 6000 #		
	255DK6	Shim, Center, 0.03 in. Thick	3500 # - 5000 #		
	255AB76	Shim, Corner, 0.06 in. Thick	2000 # - 3000 #		
			5001 # - 6000 #		
	255AB78	Shim, Corner, 0.06 in. Thick	3500 # - 5000 #		
	255AB77	Shim, Corner, 0.03 in. Thick	2000 # - 3000 #		
			5001 # - 6000 #		
255AB79	Shim, Corner, 0.03 in. Thick	3500 # - 5000 #			

\* Part not shown.

# Type 6183AH, 6183AX, 6183BM, 6183BY Platforms

## 14-6183AE

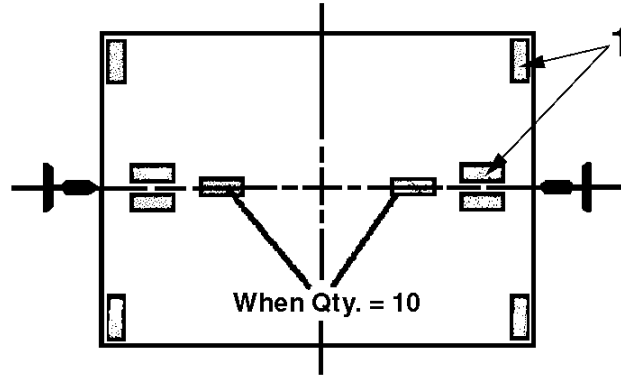


	VINTAGE	W/ or W/O 6934B LOAD WEIGHING DEVICE & W/ 6183CD TRANSDUCER			
REF. No.	PART No.	DESCRIPTION	DUTY	QTY.	COLOR CODE
1	A310JF1	Block, Center	2000 #	2	Green
	A310JF2	Block, Center	2500 #	2	Yellow
	A310JF3	Block, Center	3000 #	2	Red
	A310JF4	Block, Center	5001 # - 6000 #	4	Red
	A310HD1	Block, Center	3500 #	2	Green
	A310HD2	Block, Center	4000 #	2	Yellow
	A310HD3	Block, Center	5000 #	2	Red
2	A310JF1	Block, Corner	2000 #	4	Green
	A310JF2	Block, Corner	2500 #	4	Yellow
	A310JF3	Block, Corner	3000 #	4	Red
		Block, Corner	5001 # - 6000 #	8	Red
	A310HD1	Block, Corner	3500 #	4	Green
	A310HD2	Block, Corner	4000 #	4	Yellow
	A310HD3	Block, Corner	5000 #	4	Red
*	255DK1	Shim, Center, 0.06 in. Thick	2000 # - 3000 #	As Needed	
	255DK3	Shim, Center, 0.06 in. Thick	5001 # - 6000 #		
	255DK5	Shim, Center, 0.06 in. Thick	3500 # - 5000 #		
	255DK2	Shim, Center, 0.03 in. Thick	2000 # - 3000 #		
	255DK4	Shim, Center, 0.03 in. Thick	5001 # - 6000 #		
	255DK6	Shim, Center, 0.03 in. Thick	3500 # - 5000 #		
	255AB76	Shim, Corner, 0.06 in. Thick	2000 # - 3000 #		
			5001 # - 6000 #		
	255AB78	Shim, Corner, 0.06 in. Thick	3500 # - 5000 #		
	255AB77	Shim, Corner, 0.03 in. Thick	2000 # - 3000 #		
			5001 # - 6000 #		
255AB79	Shim, Corner, 0.03 in. Thick	3500 # - 5000 #			

\* Part not shown.

# Types 6183BP, 6183BR, 6183BX, 6183CV Platform

**14-6183AE**



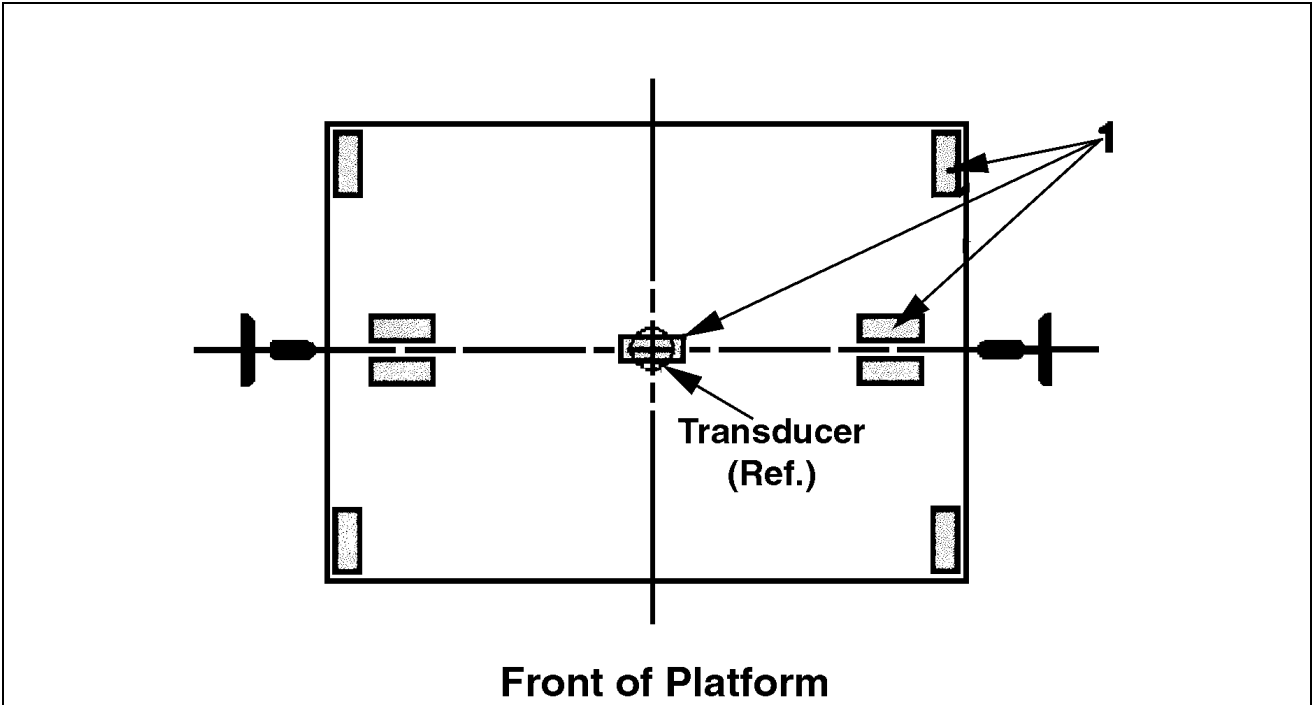
**Front of Platform**

	<b>VINTAGE</b>	<b>W/ or W/O 6934B LOAD WEIGHING DEVICE &amp; W/ 6183CD TRANSDUCER</b>			
<b>REF. No.</b>	<b>PART No.</b>	<b>DESCRIPTION</b>	<b>DUTY</b>	<b>QTY.</b>	<b>COLOR CODE</b>
1	310KS1	Block	1500 #	8	Brown
	310KS2	Block	1500 # High Cab & 2000 #	8	Gray
	310KS3	Block	2000 # High Cab & 2500 #	8	White
	310KS4	Block	2500 # High Cab & 3000 #	8	Green
	310KS5	Block	3000 # High Cab & 3500 #	8	Yellow
		Block	4000 # - 4500 # Hospital	10	Yellow
	310KS6	Block	3500 # High Cab & 4000 #	8	Red
		Block	5000 # Hospital	10	Red
*	255DK1	Shim, Center, 0.06 in. Thick	1500 # - 2000 #	As Needed	
	255DK3	Shim, Center, 0.06 in. Thick	2000 # High Cab - 4000 # & Hospital		
	255DK2	Shim, Center, 0.03 in. Thick	1500 # - 2000 #		
	255DK4	Shim, Center, 0.03 in. Thick	2000 # High Cab - 4000 # & Hospital		
	255AB76	Shim, Corner, 0.06 in. Thick	1500 # - 2000 #		
	255AB78	Shim, Corner, 0.06 in. Thick	2000 # High Cab - 4000 # & Hospital		
	255AB77	Shim, Corner, 0.03 in. Thick	1500 # - 2000 #		
	255AB79	Shim, Corner, 0.03 in. Thick	2000 # High Cab - 4000 # & Hospital		

\* Part not shown.



## Platforms



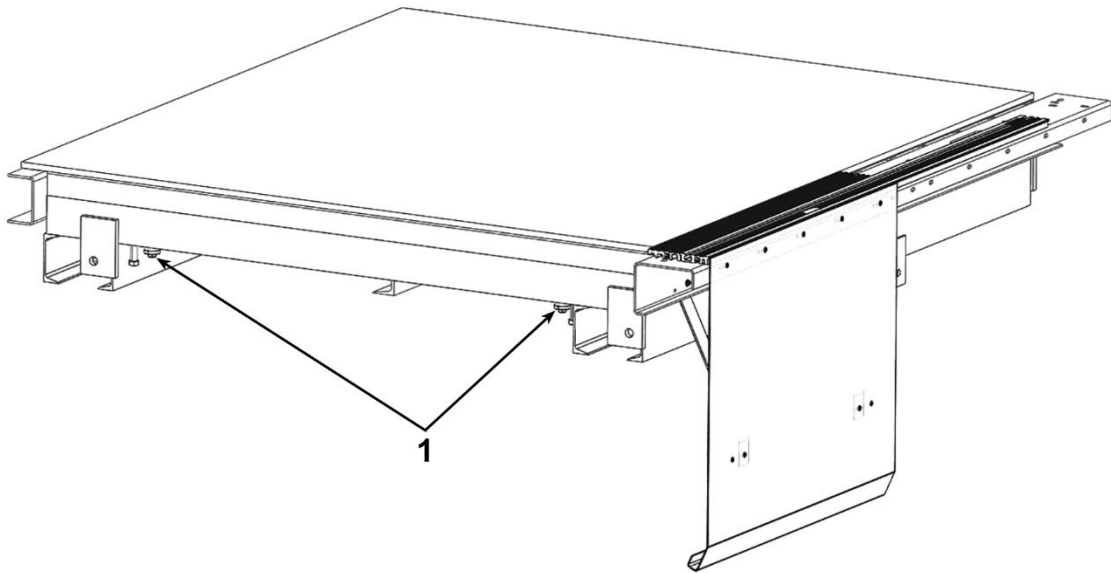
<b>VINTAGE</b>		<b>W/ 6183CD TRANSDUCER</b>			
<b>REF. No.</b>	<b>PART No.</b>	<b>DESCRIPTION</b>	<b>DUTY</b>	<b>QTY.</b>	<b>COLOR CODE</b>
1	310KS3	Block	2000 # to 3000 #	9	White
	310KS4	Block	3500 # to 4000 #	9	Green
	310KS5	Block	4500 #	9	Yellow
	310KS6	Block	5000 #	9	Red

<b>W/ AAA24270D TRANSDUCER</b>					
<b>REF. No.</b>	<b>PART No.</b>	<b>DESCRIPTION</b>	<b>MAX. LOAD ON ISOLATION BLOCKS*</b>	<b>QTY.</b>	<b>COLOR CODE</b>
1	AAA310QM1	Block	< 2690 #	7	Brown
			2691 # - 3450 #	9	Brown
	AAA310QM2	Block	3451 # - 4840 #	9	Gray
	AAA310QM3	Block	4841 # - 6680 #	9	Green
	AAA310QM4	Block	6681 # - 9220 #	9	Red
AAA310QM5	Block	9221 # - 12440 #	9	Orange	

\* Max load on isolation blocks = duty + total cab enclosure + total platform weights.

# Bumper, All Platforms

14-6183AE



- 2

	VINTAGE	
REF. No.	PART No.	DESCRIPTION
1	320BE4	Bumper