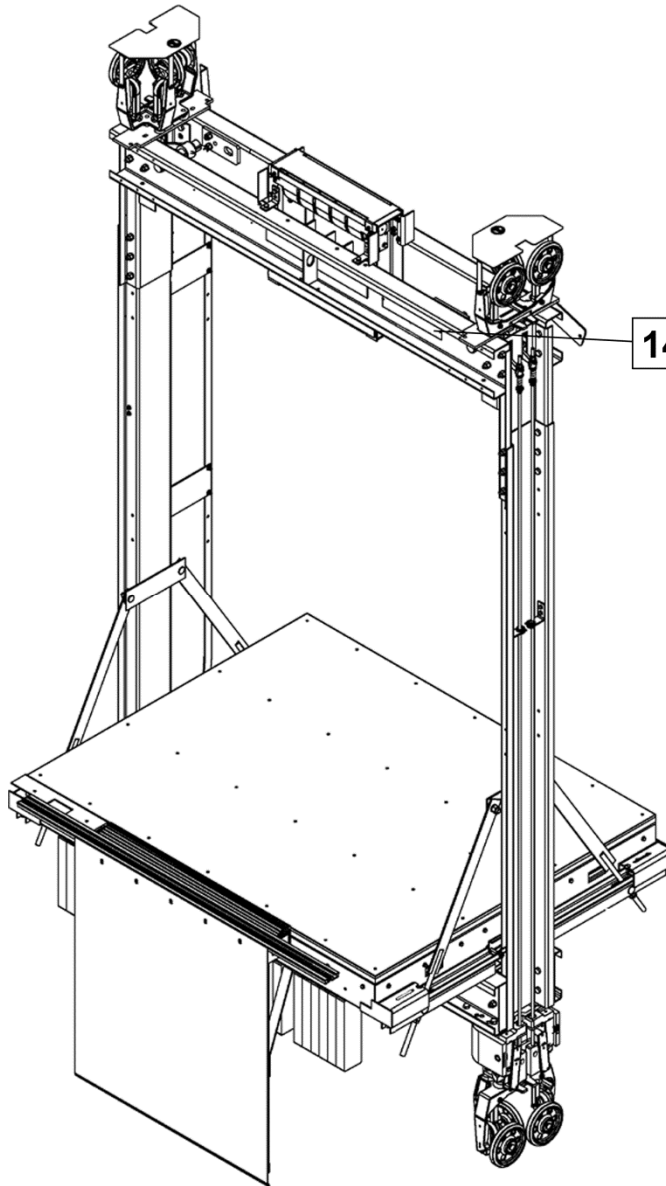


**NGHR-R1
Carframe Assembly**

Spare Parts Leaflet

14-AAA24000BM

April 9, 2014 / Page 1 of 10



**W/O
VINTAGE**

14 A - A_A24000BM

OTIS

**SERVICE ENGINEERING
Otis Elevator Company
Bloomfield, Connecticut USA**

Unpublished Work—© Otis Elevator Co.; 2014

Leaflet Description

The SPL describes the lowest replaceable parts for Next Generation High-Rise Carframe Assembly (NGHR).

Leaflet Revisions

Date Revised	Subject Matter Expert	Reason for Revision
September 20, 2005	Troy Chicoine	New SPL
June 10, 2007	Troy Chicoine	Changed page 6 and added SPL 17-AAA24270F reference for load cell and isolation pad.
January 6, 2010	Troy Chicoine	Updated ref. 3 on p. 3
July 21, 2010	Brian Mierzejewski	Updated page 7 with ACA24000BM isolation assembly information.
October 19, 2011	Jesse Richter	Updated vintage information
April 9, 2014	Kyle Pereira	Added pp. 9 and 10

Related Drawings

Drawing No.	Title	Drawing No.	Title
ACA24000BM	Next Gen HR Carframe and Platform	AAA24150G	Crosshead Sub-Assembly Gen2 Carframe
AAA24220Q	Arrangement and Assembly; Gen2 Platform	AAA24270F	Load Cell Assembly
AAA24240G	Platform Sound Insulation, Spacer Assembly	---	---
---	---	---	---

History (continued)

14-AAA24000BM

Related Documents

Document ID	Title
SPL 14-KAA24180AAA	<i>Roller Guide 160 mm Diameter</i>
SPL 14-AAA24180AV	<i>Roller Guide 200 mm Diameter</i>
SPL 14-AAA24060T	<i>2:1 Carframe Hitch Assembly Gen2 System (counterweight at rear)</i>
SPL 14-AAA24060U	<i>2:1 Carframe Hitch Assembly Gen2 System (counterweight at side)</i>
SPL 14-JAA24123AAJ	<i>Safety Assembly, 5C</i>
SPL 14-JAA24123AAK	<i>Safety Assembly, 8C</i>
SPL 17-AAA24270F	<i>Loadweighing Transducer Assemblies</i>
SPL 17-AAA24240G	<i>Platform Sound Insulation, Spacer Assembly</i>

Subject Matter Expert

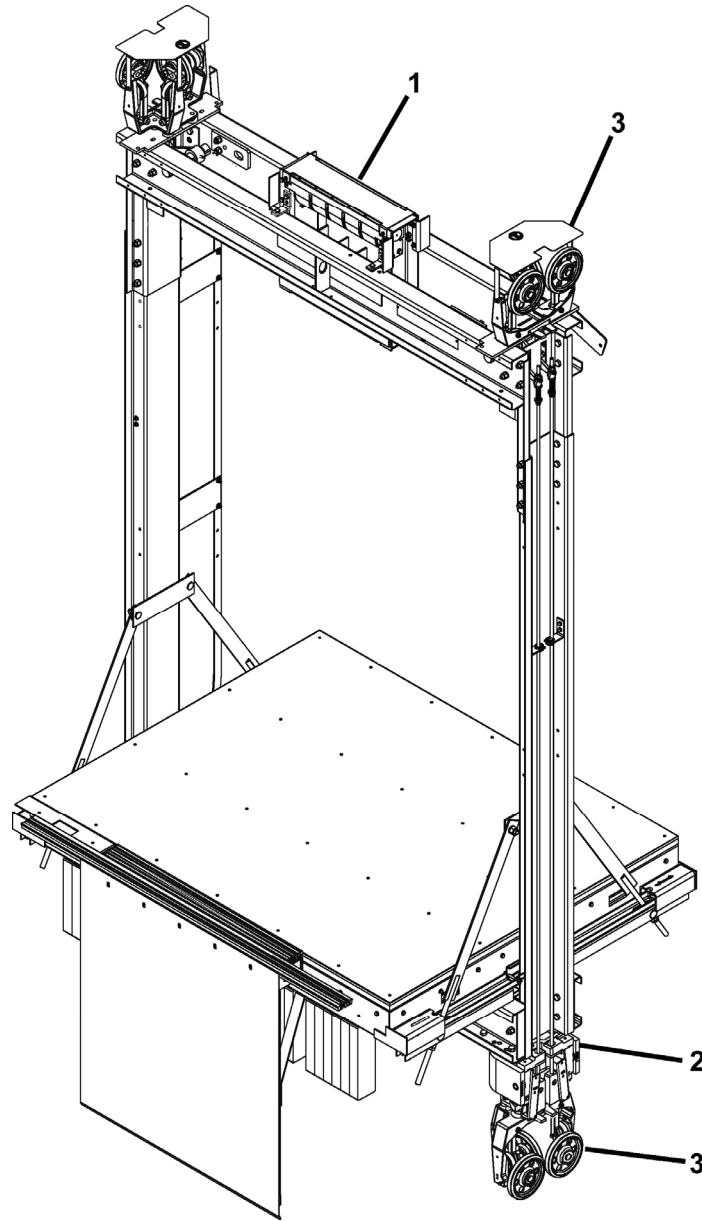
Name	Department
Kyle Pereira	OSC Service Engineering

About Spare Parts Leaflets...

This document lists the lowest replaceable units (LRUs) for the standard version of the product. The LRUs are chosen by a team of Otis associates representing engineering and manufacturing.

While goal of this document is to make parts identification as easy as possible, the document cannot be all-inclusive. Elevator and escalator contracts classified as “special” or “custom” are not addressed here. For such contracts, please refer to specified information, the contract folder, TIPS, Field Education Articles, Construction Letters, etc. for further information.

If you have any suggestions about this document, please contact the subject matter expert listed on this page.

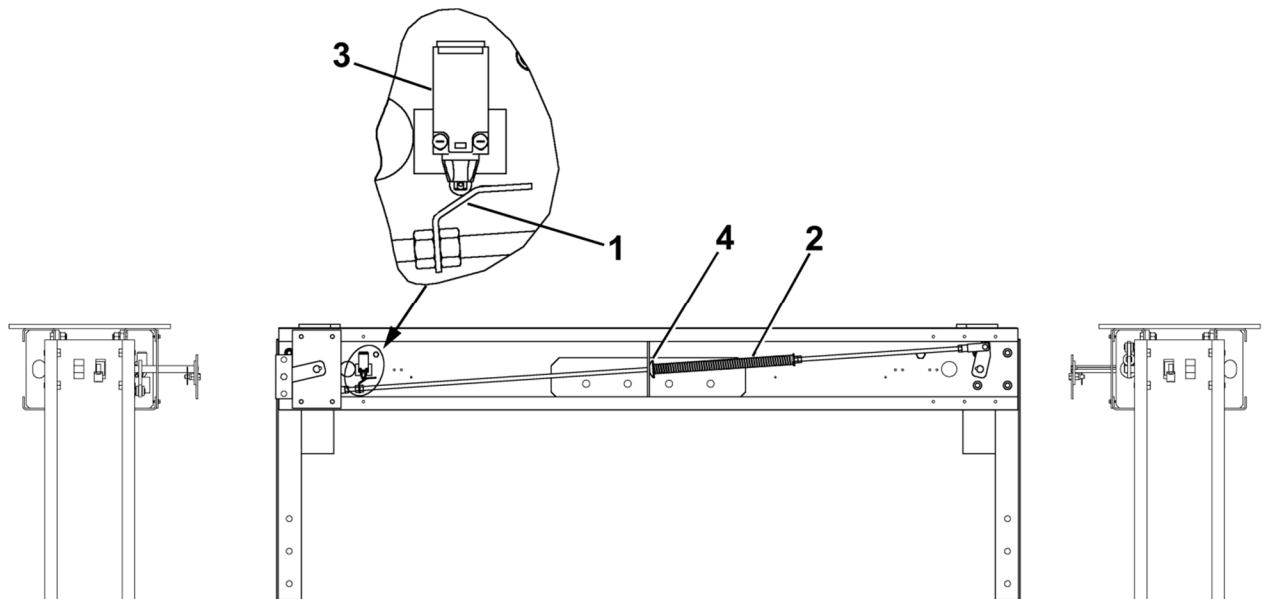


**W/O VINTAGE
A*A24000BM**

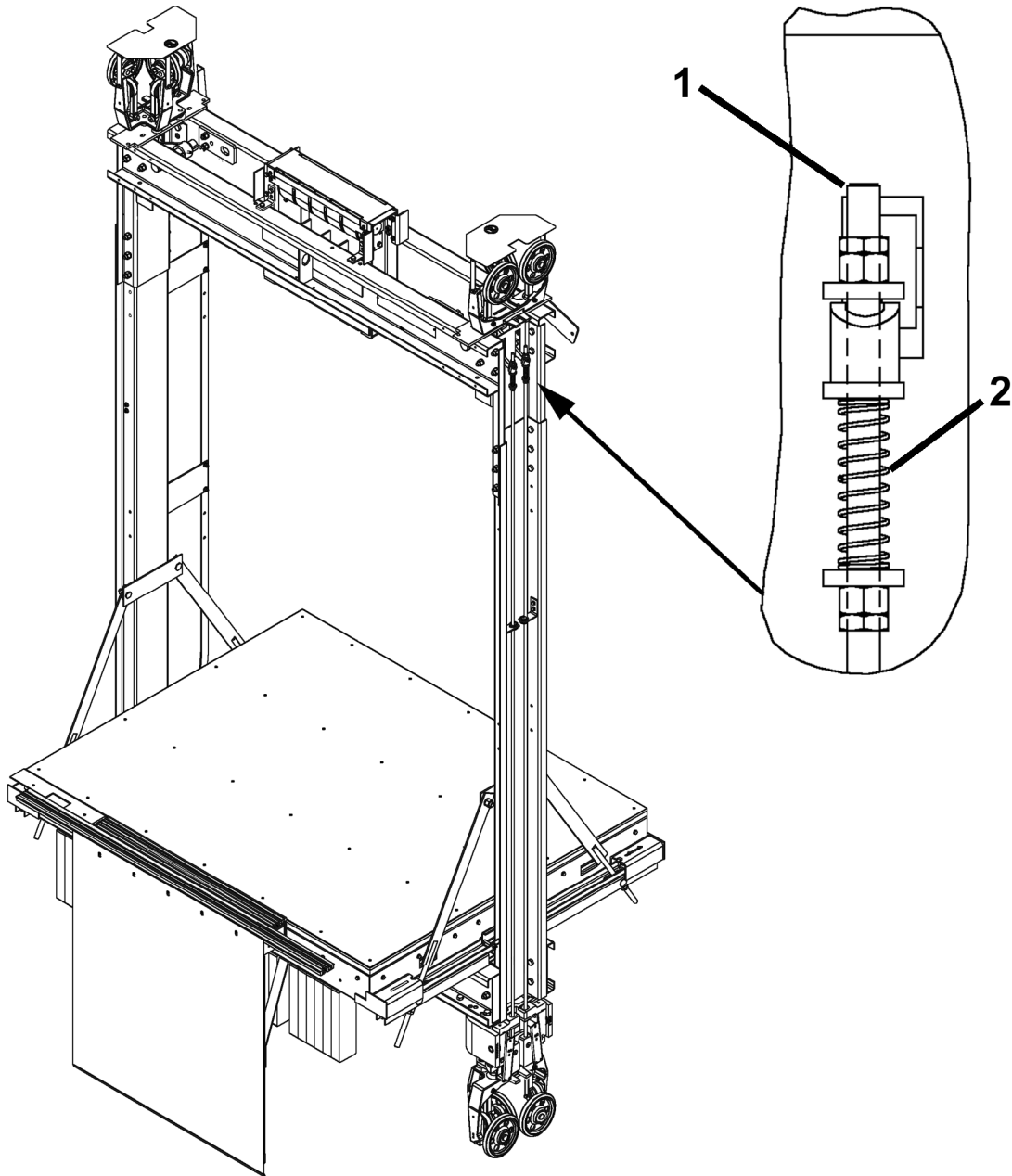
REF. No.	DESCRIPTION	REMARKS
1	Assembly, 2:1 Carframe Hitch (counterweight at rear)	👁️ SPL 14-AAA24060T
	Assembly, 2:1 Carframe Hitch (counterweight at side)	👁️ SPL 14-AAA24060U
2	Assembly, Safety, Type 12C-B (C7072A)	👁️ SPL 14-AAA24120F
	Assembly, Safety, Type 5C-B (JAA24123AAJ)	👁️ SPL 14-JAA24123AAJ
	Assembly, Safety, Type 8C-B (JAA24123AAK)	👁️ SPL 14-JAA24123AAK
3	Roller Guide, 160 mm (6.30 in.) Wheel Diameter	👁️ SPL 14-KAA24180AAA
	Roller Guide, 200 mm (7-7/8 in.) Wheel Diameter	👁️ SPL 14-AAA24180AV

Safety Operated Switch (SOS)

14-AAA24000BM



W/O VINTAGE A*A24000BM		
REF. No.	PART No.	DESCRIPTION
1	AAA316GXS1	Bracket (SOS switch)
2	AAA90EX1	Spring, 17.0 in. L, 1.0 in. \varnothing
3	AAA661D5	Switch (safety operated switch, SOS)
4	131R1	Washer, Special, 2.0 in. \varnothing

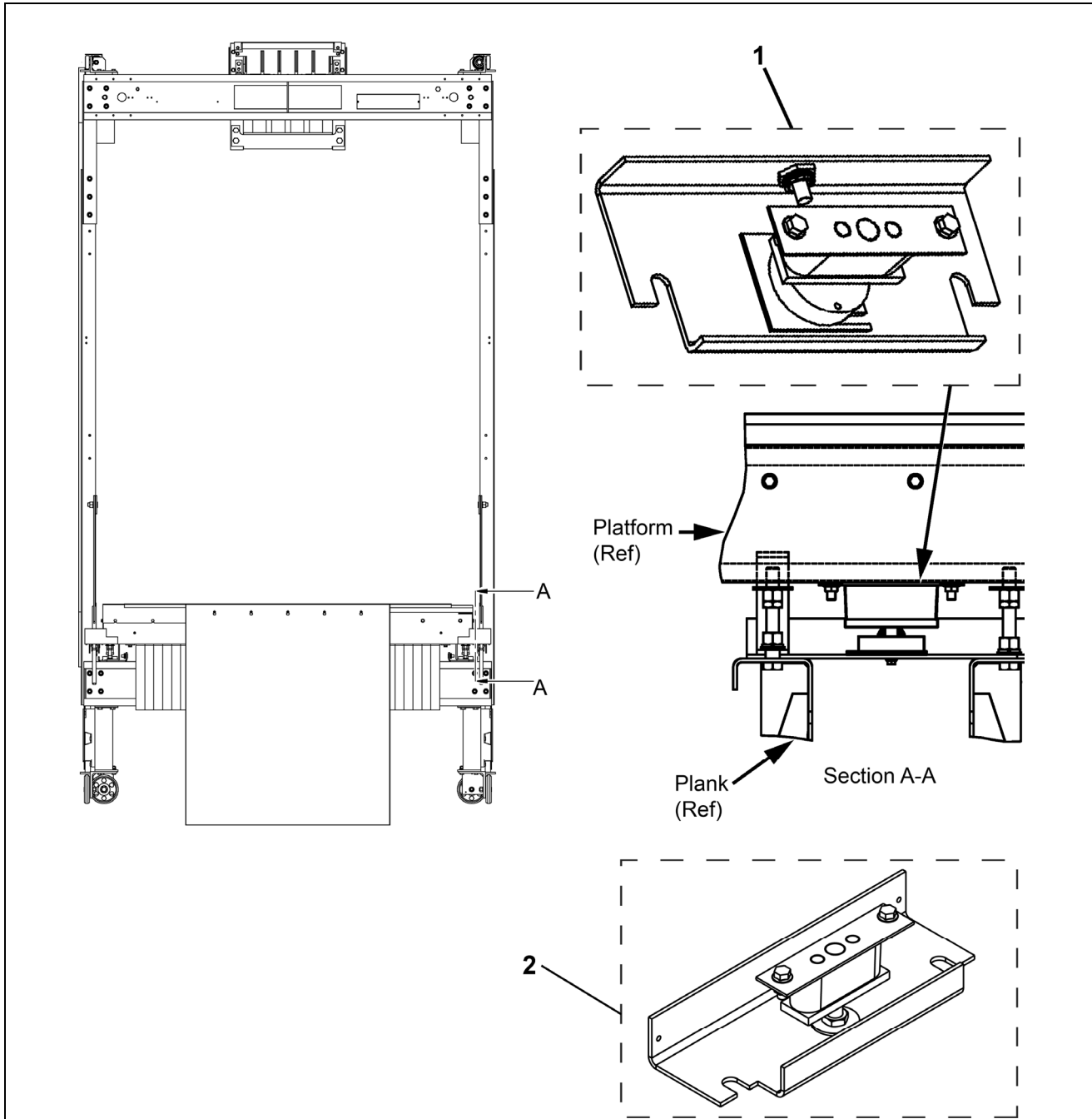




**W/O VINTAGE
A*A24000BM**

REF. No.	PART No.	DESCRIPTION
1	AAA96AAA23	Rod, Lift, Length = 3363 mm (carframe height = 3033 mm [10 ft.])
	AAA96AAA24	Rod, Lift, Length = 4116 mm (carframe height = 3516 mm [11.5 ft.])
	AAA96AAA25	Rod, Lift, Length = 4244 mm (carframe height = 3643 mm [12 ft.])
2	90JB10	Spring, 2.5 in. L, 11/16 in. \varnothing

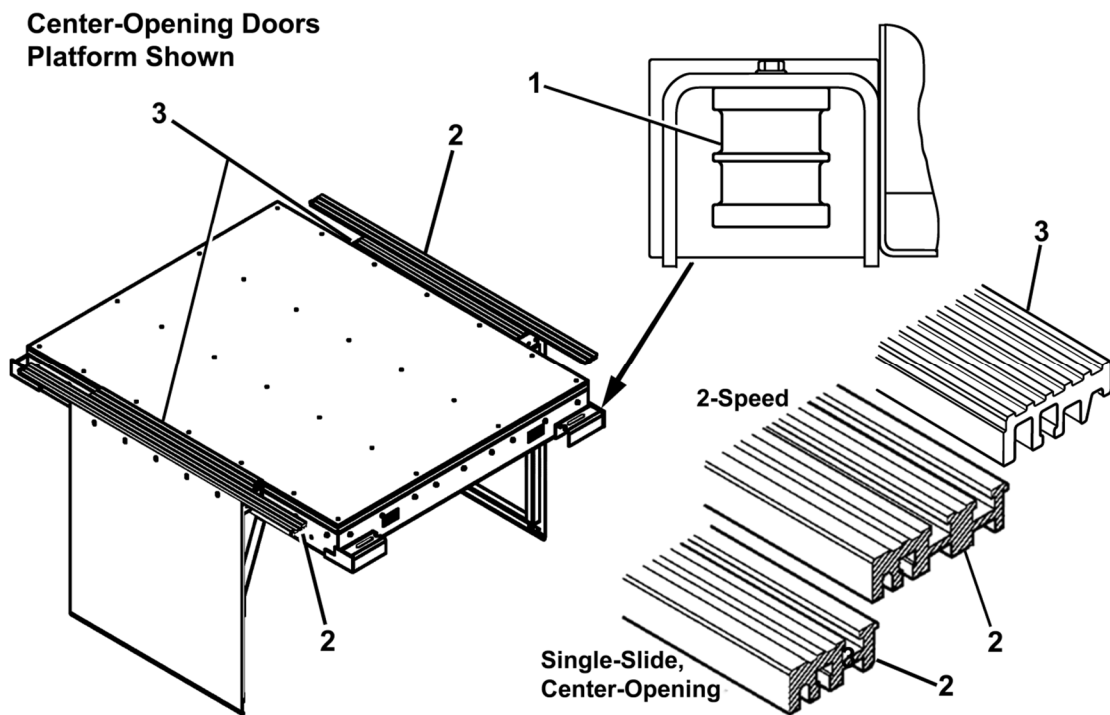
Load Cell Assembly

14-AAA2400BM



W/O VINTAGE A*A2400BM		
REF. No.	PART No.	DESCRIPTION
1	---	Assembly, Load Cell,  SPL 17-AAA24270F, w/o Belt Load Weighing
2	---	Assembly, Insulation,  SPL 17-AAA24240G, w/Belt Load Weighing

Threshold Plates and Sound Isolation Pads



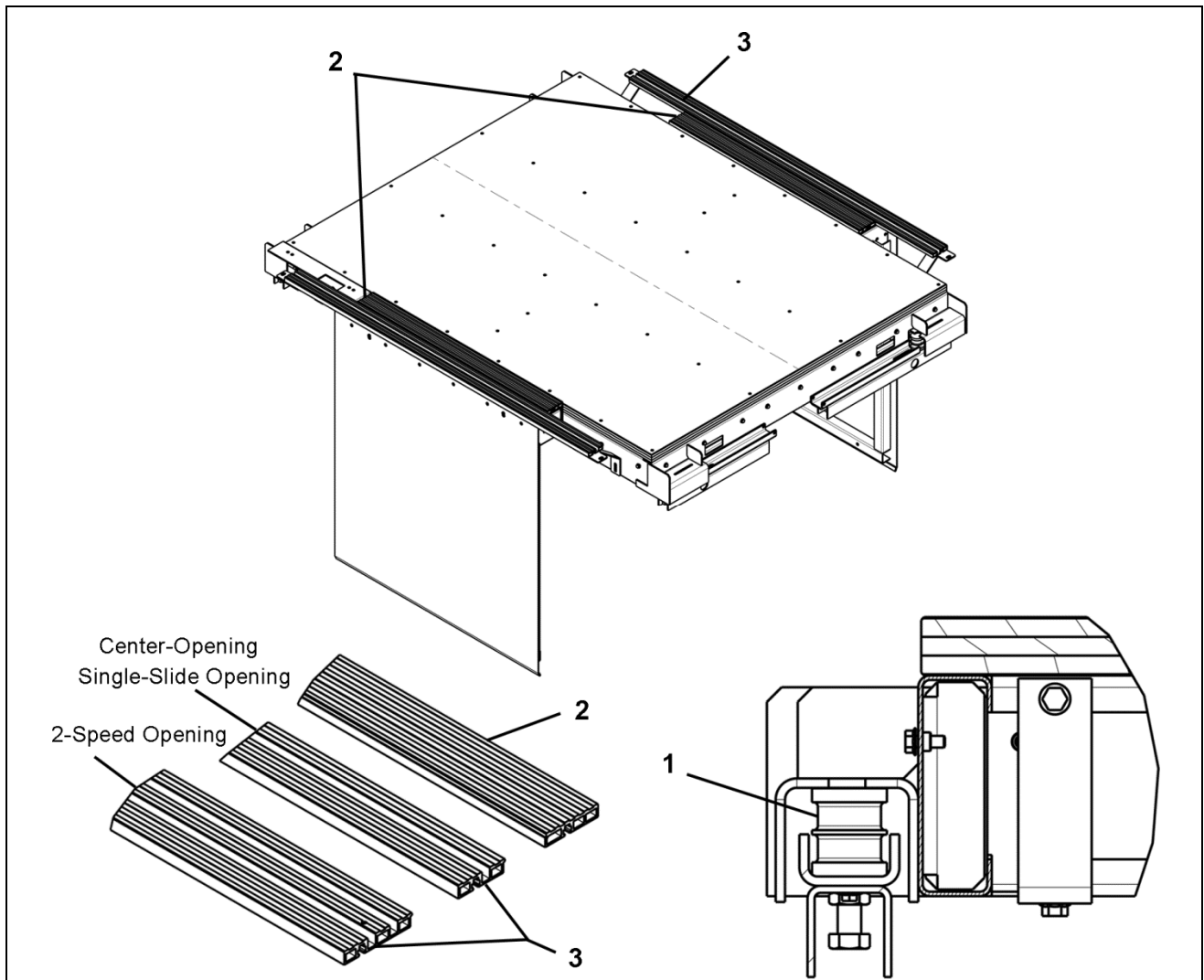
**W/O VINTAGE
AAA24000BM
ABA24000BM
ACA24000BM**

REF. No.	PART No.	DESCRIPTION
1	AAA321GH5	Pad, Sound Isolation
2	50AHT-AL-68	Shape, Threshold, Aluminum, 2/S, Length = 68 in.
	50AHT-AL-88	Shape, Threshold, Aluminum, 2/S, Length = 88 in.
	50AHT-BR-88	Shape, Threshold, Brass, 2/S, Length = 88 in.
	50AHT-NS-84	Shape, Threshold, Nickel Silver, 2/S, Length = 84 in.
	50AHV-AL-72	Shape, Threshold, Aluminum, S/S or C/O, Length = 72 in.
	50AHV-AL-144	Shape, Threshold, Aluminum, S/S or C/O, Length = 144 in.
	50AHV-BR-72	Shape, Threshold, Brass, S/S Or C/O, Length = 72 in.
	50AHV-NS-72	Shape, Threshold, Nickel Silver, S/S or C/O, Length = 72 in.
	50AHV-NS-84	Shape, Threshold, Nickel Silver, S/S or C/O, Length = 84 in.
3	50AJR-41-48	Shape, Threshold Extension, Aluminum, 2/S, S/S, or C/O, Length = 48 in.
	50AJR-41-144	Shape, Threshold Extension, Aluminum, 2/S, S/S, or C/O, Length = 144 in.

NOTES:

1. All shapes must be cut and drilled to suit at installation.
2. Door Systems: S/S = Single-Slide, 2/S = 2-Speed, and C/O = Center-Opening.

Isolation Pads



ADA2400BM				
REF. No.	PART No.	OPENING WIDTH	MATERIAL	DESCRIPTION
1	AAA321GH5	---	---	Pad, Sound Isolation
2	AAA280BP1	36 in. (914 mm)	Aluminum	Threshold Extensions
	AAA280BP2	42 in. (1067 mm)		
	AAA280BP3	48 in. (1219 mm)		
	AAA280BP4	54 in. (1372 mm)		
	AAA280BR1	36 in. (914 mm)	Bronze	
	AAA280BR2	42 in. (1067 mm)		
	AAA280BR3	48 in. (1219 mm)		
	AAA280BR4	54 in. (1372 mm)		
	AAA280BQ1	36 in. (914 mm)	Nickel Silver	
	AAA280BQ2	42 in. (1067 mm)		
	AAA280BQ3	48 in. (1219 mm)		
	AAA280BQ4	54 in. (1372 mm)		

(Continued on Next page)

**Threshold Plates & Sound
Isolation Pads**

See p. 9 for illustration

ADA2400BM								
REF. No.	PART No.	OPENING WIDTH	LENGTH	OPENING TYPE	MATERIAL	DESCRIPTION		
3	AAA280BJ1	42 in. (1067 mm)	67.34 in. (1711 mm)	Center-Opening	Aluminum	Threshold		
	AAA280BJ3	48 in. (1219 mm)	76.32 in. (1939 mm)					
	AAA280BJ5	36 in. (914 mm)	59.49 in. (1511 mm)	Single-Slide				
	AAA280BJ8	42 in. (1067 mm)	68.52 in. (1741mm)					
	AAA280BJ11	48 in. (1219 mm)	65.50 in. (1664 mm)	Two-Speed				
	AAA280BJ14	54 in. (1372 mm)	73.03 in. (1855 mm)					
	AAA280BJ18	N/A	76.32 in. (1939 mm)	C/O or S/S			Shape, Threshold, No Holes/Slots	
	AAA280BJ22		73.03 in. (1855 mm)	2/S				
	AAA280BN1	42 in. (1067 mm)	67.34 in. (1711 mm)	Center-Opening			Bronze	Threshold
	AAA280BN3	48 in. (1219 mm)	76.32 in. (1939 mm)					
	AAA280BN5	36 in. (914 mm)	59.49 in. (1511 mm)	Single-Slide				
	AAA280BN8	42 in. (1067 mm)	68.52 in. (1741mm)					
	AAA280BN11	48 in. (1219 mm)	65.50 in. (1664 mm)	Two-Speed				
	AAA280BN14	54 in. (1372 mm)	73.03 in. (1855 mm)					
	AAA280BN18	N/A	76.32 in. (1939 mm)	C/O or S/S	Shape, Threshold, No Holes/Slots			
	AAA280BN22		73.03 in. (1855 mm)	2/S				
	AAA280BM1	42 in. (1067 mm)	67.34 in. (1711 mm)	Center-Opening	Nickel Silver	Threshold		
	AAA280BM3	48 in. (1219 mm)	76.32 in. (1939 mm)					
	AAA280BM5	36 in. (914 mm)	59.49 in. (1511 mm)	Single-Slide				
	AAA280BM8	42 in. (1067 mm)	68.52 in. (1741mm)					
	AAA280BM11	48 in. (1219 mm)	65.50 in. (1664 mm)	Two-Speed				
	AAA280BM14	54 in. (1372 mm)	73.03 in. (1855 mm)					
	AAA280BM18	N/A	76.32 in. (1939 mm)	C/O or S/S			Shape, Threshold, No Holes/Slots	
	AAA280BM22		73.03 in. (1855 mm)	2/S				