

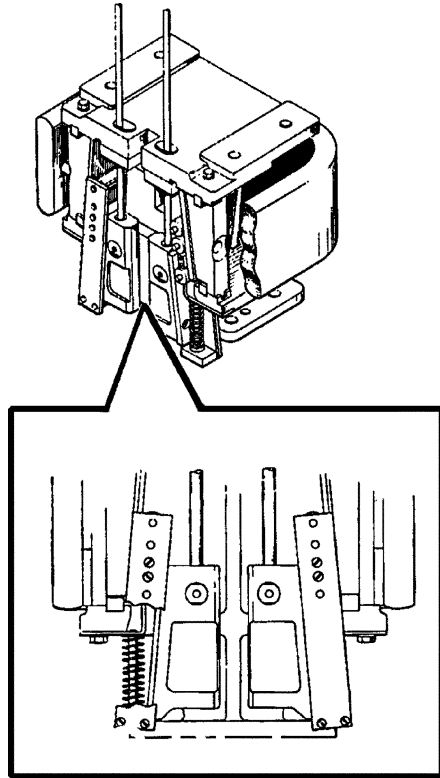
Flexible Guide Clamp Safeties

5C-B, 8C-B, 9C-B, 11C-B, 12C-B, 14C-B,
11U-B, 16U-B, 14D-B, 18D-B, & 25D-B

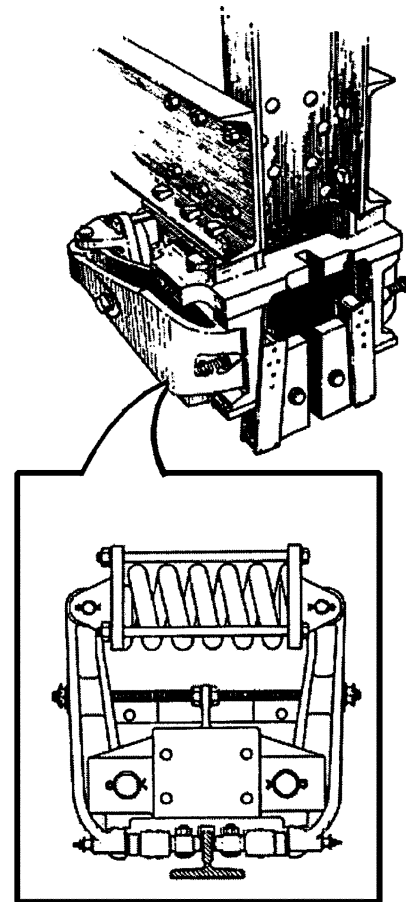
Spare Parts Leaflet

14-AAA24120F

September 6, 2023 / Page 1 of 24



C Style
&
U Style



D Style

OTIS

This document does not contain any technical
data subject to EAR or ITAR

SERVICE ENGINEERING

Otis Elevator Company

Bloomfield, Connecticut USA

Unpublished Work—© Otis Elevator Co.; 2023

Leaflet Description

This leaflet describes C-style, U-style, and D-style flexible guide clamp safeties. U-style safeties are similar to C-style safeties, except that they are metric. Specific pages detail individual types of each style as well as SOS switches, releasing carriers, and lift rod connection parts.

Leaflet Revisions

Date Revised	Subject Matter Expert	Reason for Revision
October 1997	Troy Chicoine	New Leaflet
January 1998	Troy Chicoine	Add Safety Test Tag, update and add parts
January 1, 2001	Troy Chicoine	Add U-style safeties, correct part number
August 10, 2004	Troy Chicoine	Added new part no. on pages 8-10, 12-14, 16-17
June 1, 2005	Jesse Richter	Added page 23, governor rope guide assembly
April 7, 2010	Jesse Richter	Added note to Lift Rod Connection Parts on p.22.
June 16, 2010	Justin Billard & Jesse Richter	Added new wedge assembly parts AAA24120G5 thru G8; added dimension F and ISO and Korean rail sizes for roller carriage and wedge assemblies on pages 13–14.
November 4, 2015	Kyle Pereira	Updated parts descriptions in ref. 2 on p. 12
November 18, 2015	Kyle Pereira	Corrected parts descriptions in ref. 2 on p. 8
January 19, 2022	Jesse Richter	Updated document template
May 31, 2023	Juan Murillo	Added p/n 82A7 to pp. 5 and 6
September 6, 2023	Juan Murillo	Updated Ref. 2 on p. 8

Related Drawings

Safety Type	Drawing No.	Safety Type	Drawing No.
5C-B	D6460A	25D-B	7124A
8C-B	E6461A	14C-B	A7128A
14D-B	D6523A	9C-B & 11C-B	7600F
12C-B	C7072A	11U-B	A**24120F & A**24120AC
18D-B	A7122A	16U-B	AAA24120K

Related Documents

Document ID	Title
OMM 17.0	Safeties
OMM 17.2.1	9C - B Safety
SWP 17.0.1-A	Safety Tests
TIP 17.0-1	9C and 11C Safeties
TIP 17.0-2	Car Safeties
TIP 17.0-3	Flexible Guide Clamp Safeties

(Continued on next page)

History (continued)

14-AAA24120F

Subject Matter Expert

Name	Department
Jesse Richter	OSC Service Engineering

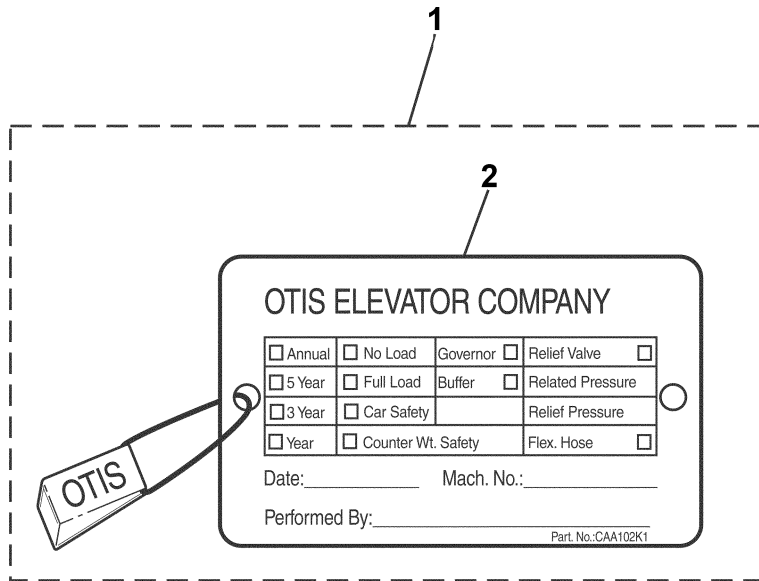
About Spare Parts Leaflets...

This document lists the lowest replaceable units (LRUs) for the standard version of the product. The LRUs are chosen by a team of Otis associates representing engineering and manufacturing.

While goal of this document is to make parts identification as easy as possible, the document cannot be all-inclusive. Elevator and escalator contracts classified as “special” or “custom” are not addressed here. For such contracts, please refer to specified information, the contract folder, TIPs, Field Education Articles, Construction Letters, etc. for further information.

If you have any suggestions about this document, please contact the subject matter expert listed on this page.

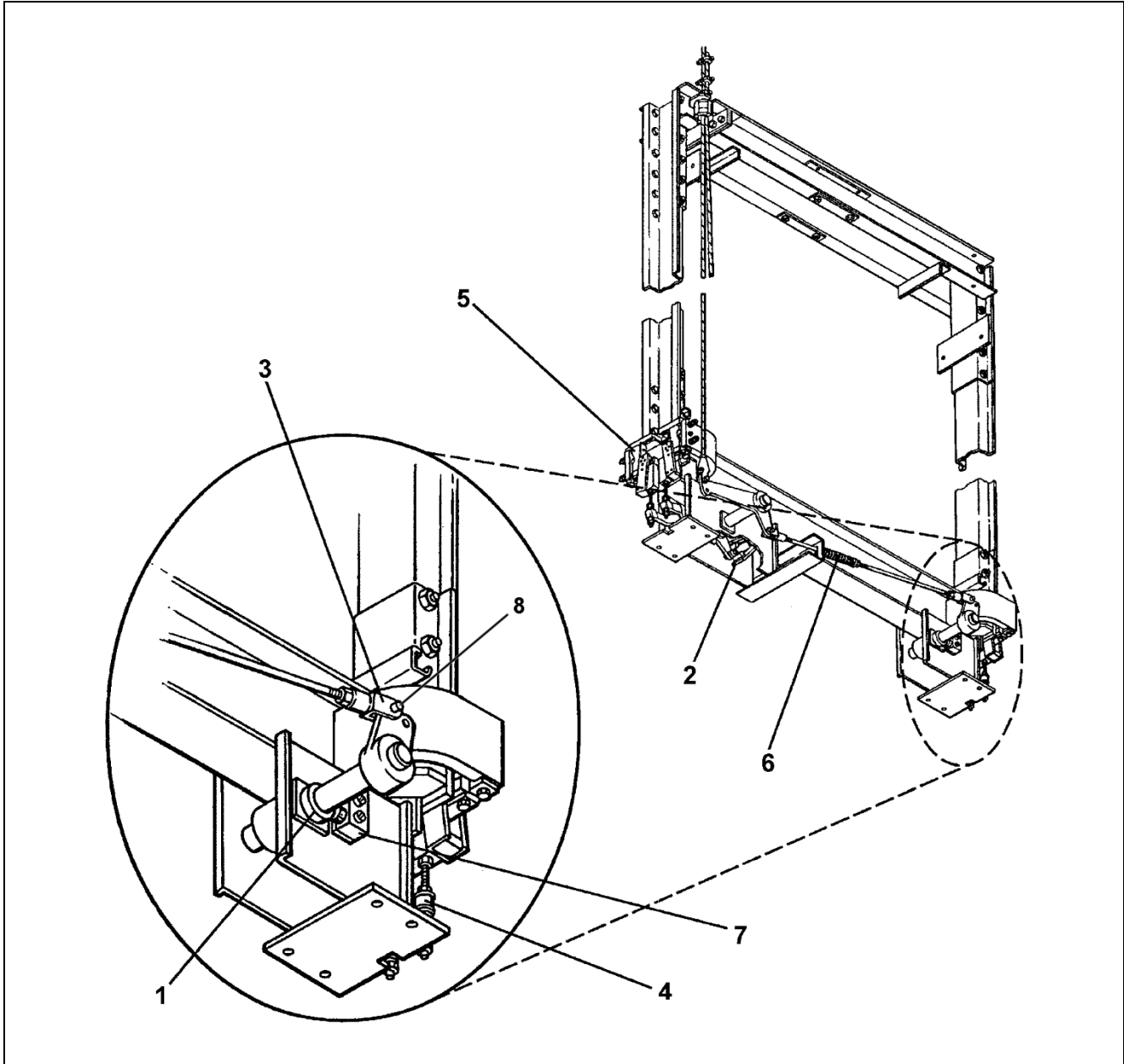
Safety Test Tag






REF. No.	PART No.	DESCRIPTION	APPLICATION
1	CAA102K2	Assembly, Multi-Purpose Test Tag, w/ Tracking Seal & Wire	All Safeties
2	CAA102K1	Tag, Multi-Purpose Test	

Types 9C & 11C Safeties

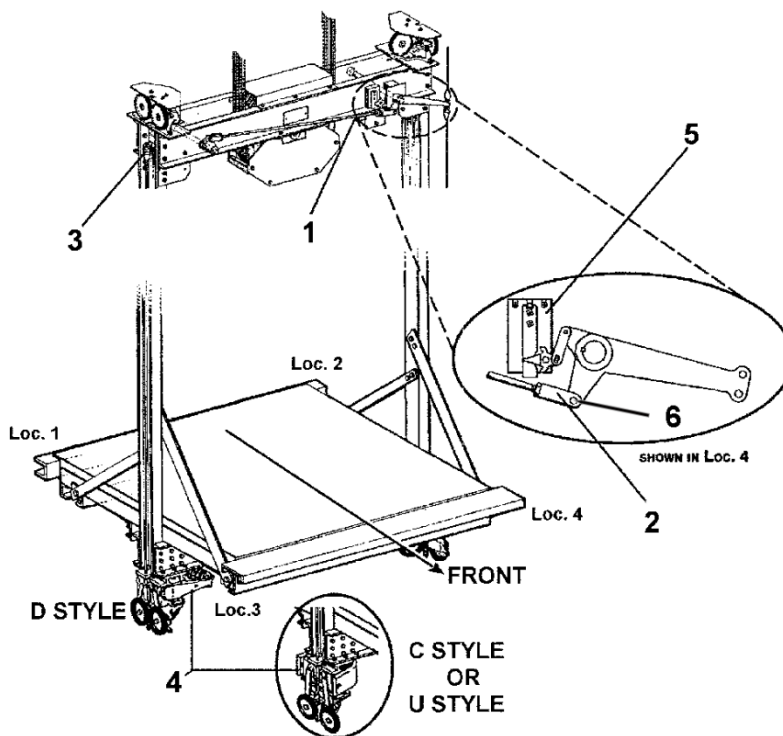
14-AAA24120F



REF. No.	PART No.	DESCRIPTION
1	327KK2	Cam
2	---	Carrier, Releasing, Type 7600AA,  p. 20
3	338P1	Clevis
4	---	Connection, Lift Rod,  p. 24
5	---	Safety, Types 9C-B & 11C-B,  pp. 9-10
6	90JC6	Spring
7	177DK3	Switch, SOS
8	82A7	Pin

14-AAA24120F

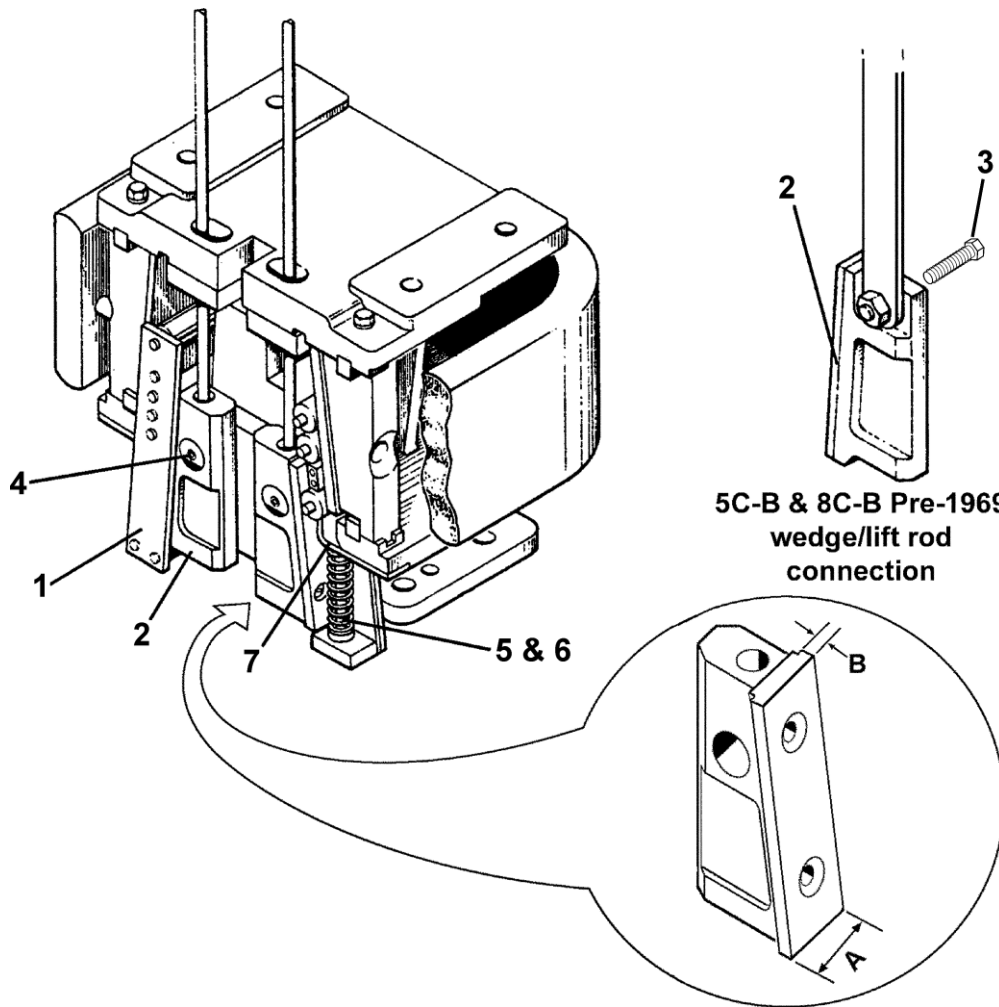
Types 5C-B, 8C-B, 12C-B, 14C-B, 11U-B, 16U-B, 14D-B, 18D-B, & 25D-B Safeties



REF. No.	PART No.	DESCRIPTION	PAGE No.
1	---	Carrier, Releasing, Type A6484A	20
	---	Carrier, Releasing, Type 6484B	21
2	338P1	Clevis	---
3	---	Connection, Lift Rod	23
4	---	Safety, Type 11U-B	13
		Safety, Type 16U-B	15
		Safety, Type 5C-B	7
		Safety, Type 8C-B	8
		Safety, Type 12C-B	11
		Safety, Type 14C-B	12
		Safety, Type 14D-B	16-17
		Safety, Type 18D-B	18
Safety, Type 25D-B	19		
5	6098D4 AAA6098NR1	Switch, SOS (used in locations 1 & 4)	
	6098D3 AAA6098NR2	Switch, SOS (used in locations 2 & 3)	
6	82A7	Pin	

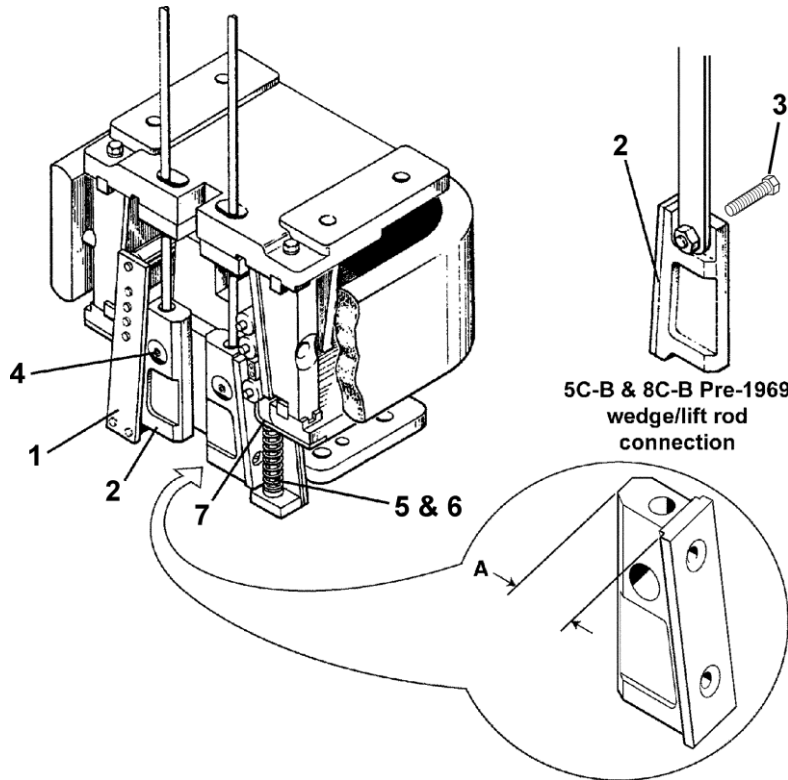
Type 5C-B Safeties



14-AAA24120F



REF. No.	PART No.	DESCRIPTION	VINTAGES
1	AAA6523J1	Assembly, Roller Carriage, AAA7072H1	1936-1940
	AAA6523J2	Assembly, Roller Carriage, AAA7072H2	1940-1969
	6460B1	Assembly, Roller Carriage, 6460C1	1969-Present
2	AAA7072H1	Assembly, Wedge, A = 1 in., B = 0.187 in.	1936-1940
	AAA7072H2	Assembly, Wedge, A = 1.25 in., B = 0.187 in.	1940-1969
	6460C1	Assembly, Wedge, A = 1.25 in., B = 0.312 in.	1969-Present
3	59DA1	Bolt, 3/4 in. x 2-1/32 in. L	Pre-1969
4	72DY2	Nut, Barrel (w/ set screw)	1969-Present
5	81PA1	Pin	All
6*	90HB6	Spring, Compression	(1936-Present)
7	477AT1	Stop, Roller Carriage	1940-Present

* Roller carriage stop was cast into safety block on 1936-1940 vintage.

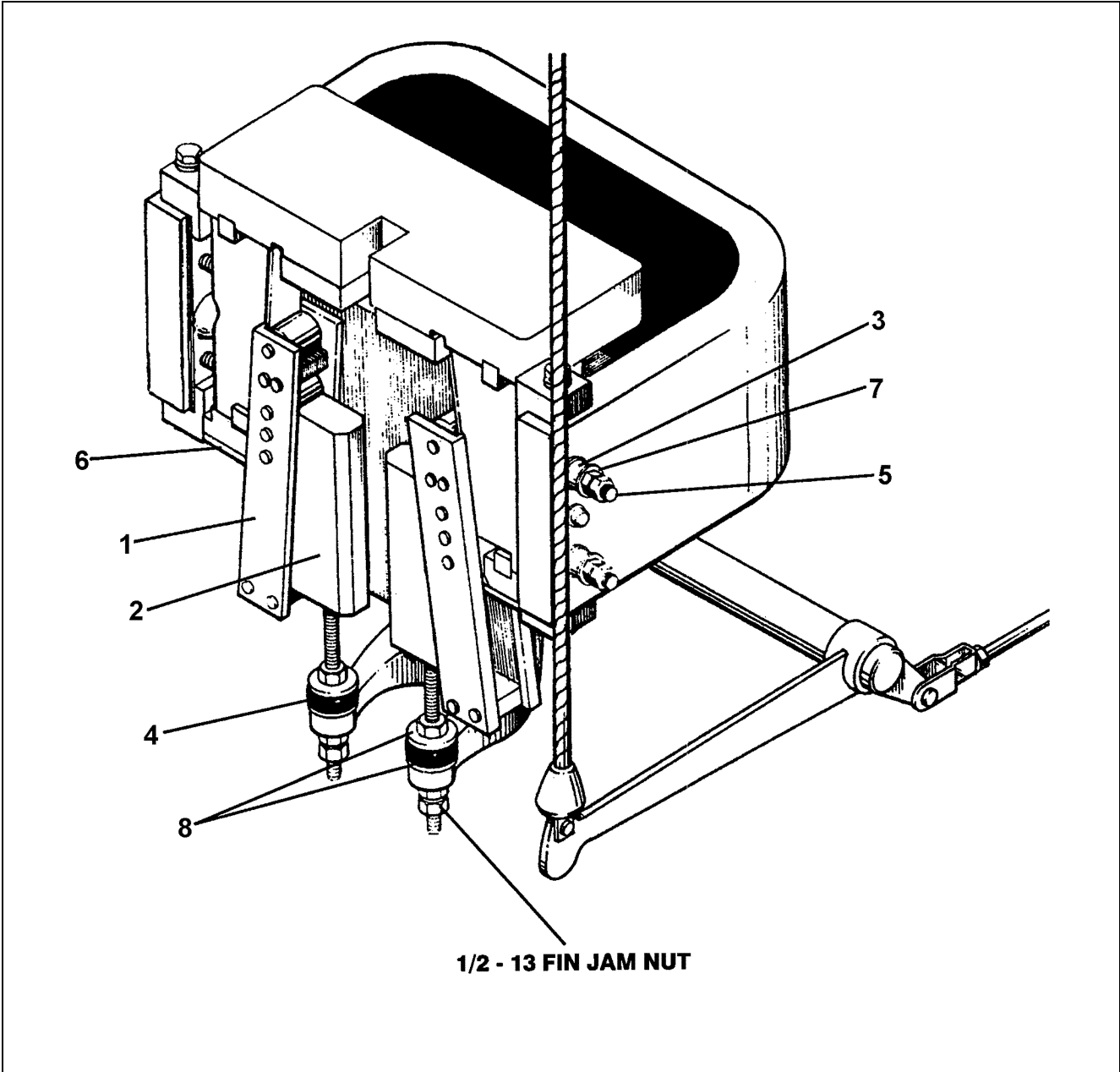


REF. No.	PART No.	DESCRIPTION	VINTAGES
1	AAA6523J3	Assembly, Roller Carriage,  AAA7072H3	1936-1965
	7072D4 7072D2	Assembly, Roller Carriage,  AAA7072H4, A7072B1	1965-Present
2	AAA7072H3	Assembly, Wedge, w/ Bolted Wedge /Lift Rod Connection, A = 1.94 in.	1936-1965
	AAA7072H4	Assembly, Wedge, w/ Bolted Wedge /Lift Rod Connection, A = 1.72 in.	1965-1969
	A7072B1	Assembly, Wedge, w/ Barrel Nut Wedge /Lift Rod Connection, A = 1.72 in.	1969-Present
3	59DA1	Bolt, 3/4 in. x 2-1/32 in. L	Pre-1969
4	72DY2	Nut, Barrel (w/ set screw)	1969-Present
5	81PA1	Pin	All
6*	90HB6	Spring, Compression	(1936-Present)
7	477AT2	Stop, Roller Carriage	1940-65
	283GF1		1965-Present

* Roller carriage stop was cast into safety block on 1936–1940 vintage.

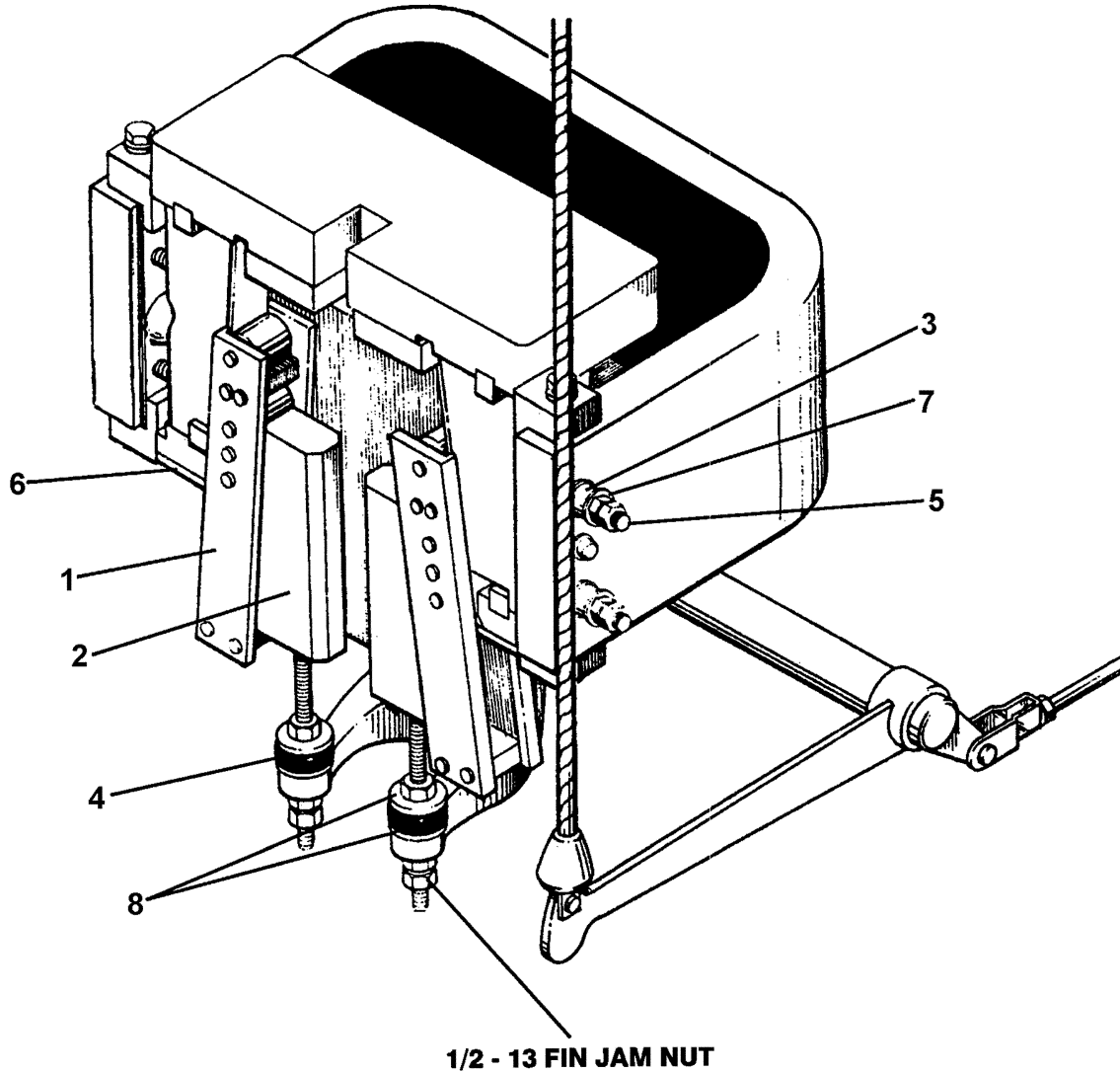
Type 9C-B Safeties

14-AAA24120F



1/2 - 13 FIN JAM NUT

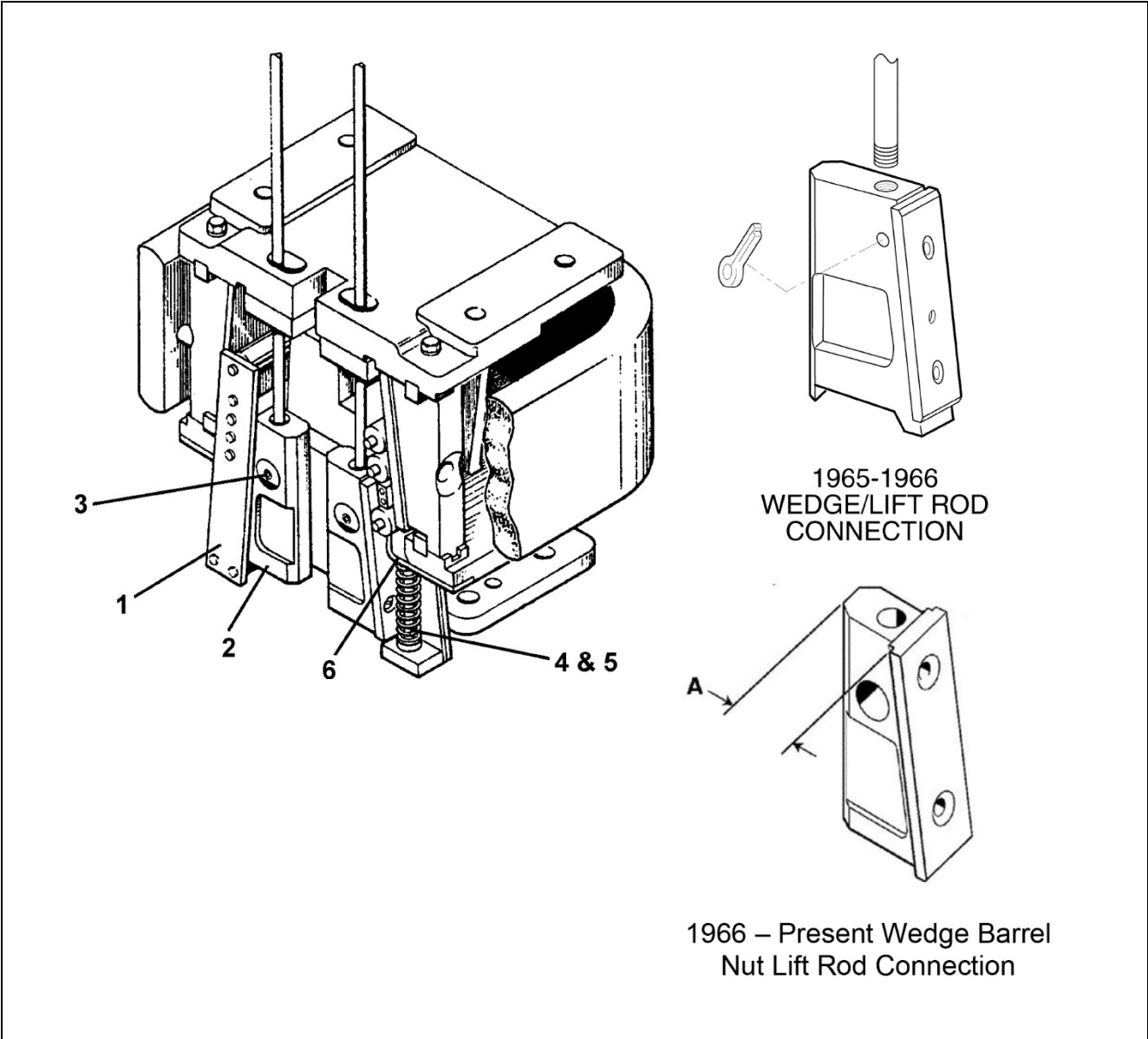
REF. No.	PART No.	DESCRIPTION
1	7600P4 7600P3	Assembly, Roller Carriage
2	7600H1	Assembly, Wedge
3	310AH6	Block, Rubber
4	320BE4	Bumper
5	96H185	Rod
6	477DF1	Stop, Roller Carriage
7	127VB124	Washer
8	138A1	Washer, Cup



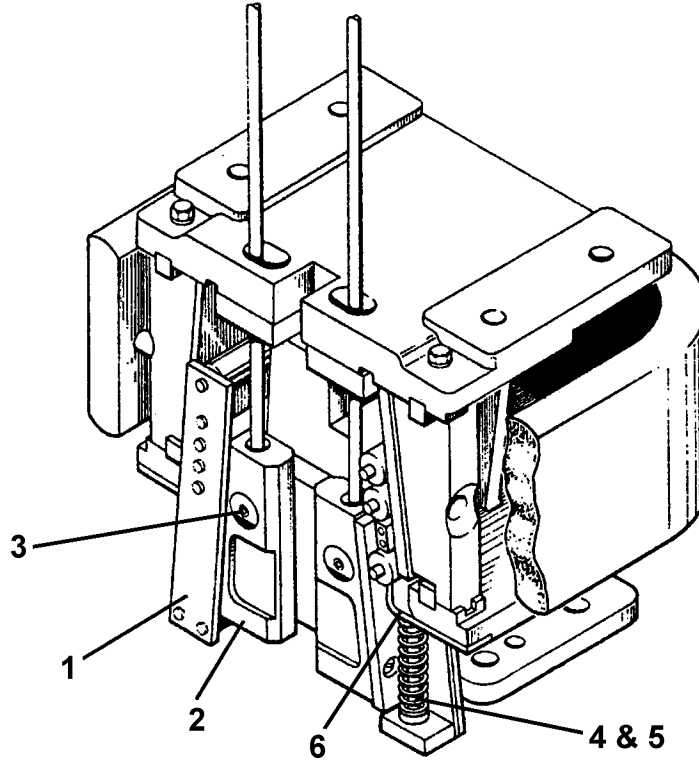
REF. No.	PART No.	DESCRIPTION
1	7600P2 7600P4	Assembly, Roller Carriage
2	7600H2	Assembly, Wedge (L.O.S. > 9,500 lb. & ≤ 11,500 lb.)
	7600H3	Assembly, Wedge (L.O.S. > 11,500 lb. & ≤ 13,000 lb.)
3	310AH6	Block, Rubber
4	320BE4	Bumper
5	96H185	Rod
6	477DF1	Stop, Roller Carriage
7	127VB124	Washer
8	138A1	Washer, Cup

Type 12C-B Safeties

14-AAA24120F



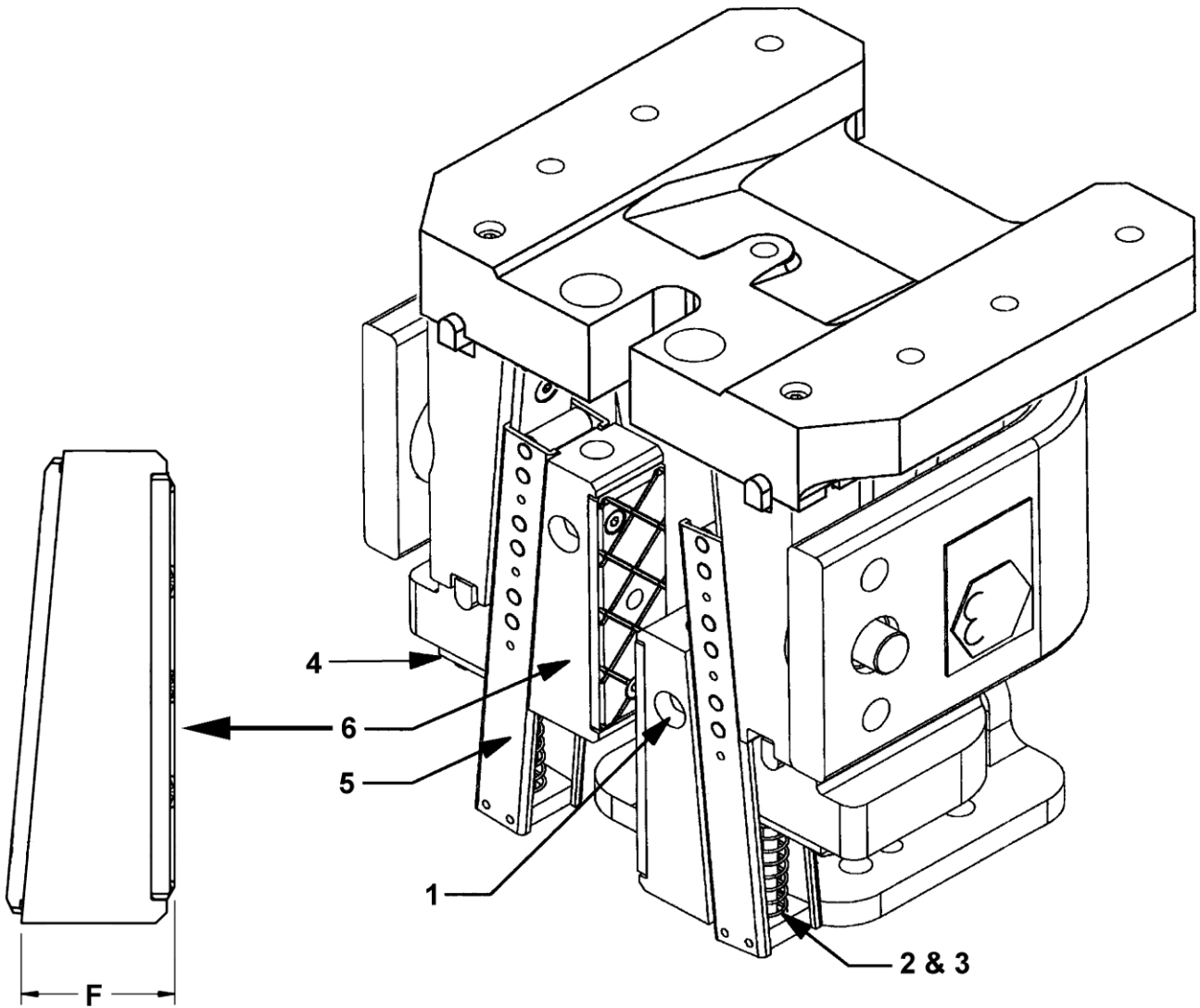
REF. No.	PART No.	DESCRIPTION	VINTAGES
1	7072D1	Assembly, Roller Carriage	All (1965-Present)
2	7072B1	Assembly, Wedge, w/ Threaded Lift Rod Connection	1965-1966
	A7072B1	Assembly, Wedge w/ Barrel Nut Connection to Lift Rod. A = 1.72 in.	1966-Present
	2-A7072B1	Assembly, Wedge w/ Barrel Nut Connection to Lift Rod. A = 1.67 in.	1996-2016
3	72DY2	Nut, Barrel (w/ set screw)	1966-Present
4	81PA1	Pin	All
5	90HB6	Spring, Compression	(1965-Present)
6	283GF1	Stop, Roller Carriage	All (1965-Present)



REF. No.	PART No.	DESCRIPTION	VINTAGES
1	7128C1 7128C2	Assembly, Roller Carriage	All (1967-Present)
2	7128D1	Assembly, Wedge, Bottom Surface Not Painted, w/ Flat Wear Surface	
	7128D3	Assembly, Wedge, Bottom Surface Painted Blue, w/ Chamfered Wear Surface	1987-Present
3	72DY2	Nut, Barrel (w/set screw), Imperial Thread	1967-1996
	72DY3	Nut, Barrel (w/set screw), Metric Thread	1996-Present
4	81PA1	Pin	All (1967-Present)
5	90HB6	Spring, Compression	
6	477ES1	Stop, Roller Carriage	

Type 11U-B Safeties

14-AAA24120F



A**24120F A**24120AC		
REF. No.	PART No.	DESCRIPTION
1	72DY3	Nut, Barrel (w/set screw)
2	81PA1	Pin
3	90HB6	Spring, Compression
4	AAA283APS1	Angle, Formed

(Continued on next page)

14-AAA24120F

Type 11U-B Safeties

See illustration on the previous page.

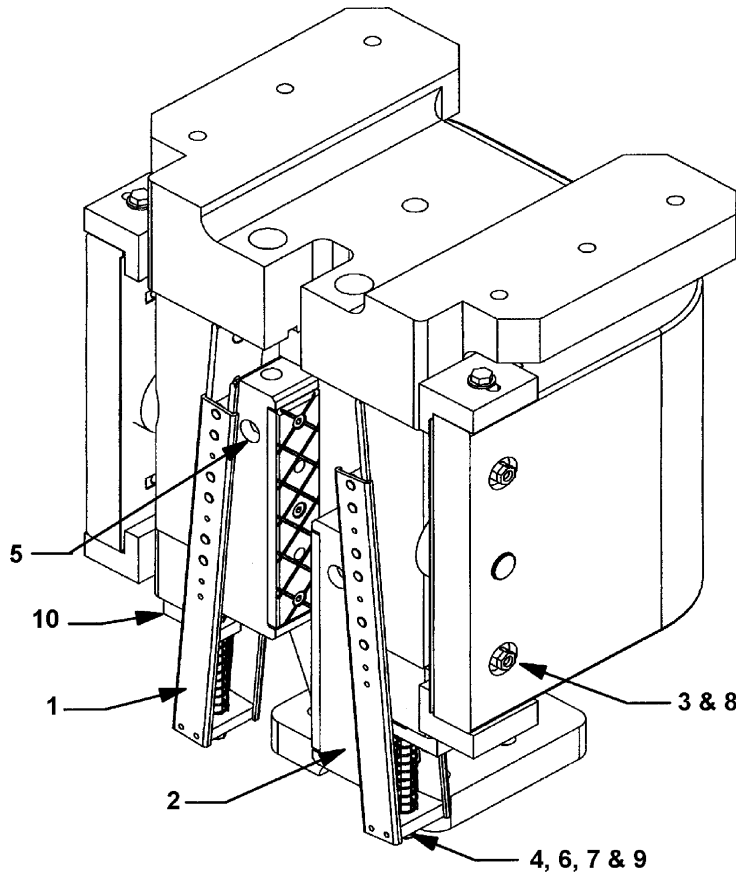
REF. No.	A**24120F	A**24120AC	DESCRIPTION	DIM. F mm (in.)	RAILSIZE			
					Otis	ISO7465	KOREA	
5	AAA24120H1 AAA24120H3	AAA24120H3	Assembly, Roller Carriage	---	3/4	T140-1/B	T30K	
					1/2	T140-2/B	T37K	
	OA	T140-3/B			T50K			
	1	T127-2/B			T24K			
6	AAA24120H2 AAA24120H4	AAA24120H4	Assembly, Wedge	57.9 (2.28)	1	T127-2/B	T24K	
					3/4	T140-1/B	T30K	
					1/2	T140-2/B	T37K	
					OA	T140-3/B	T50K	
	---	AAA24120G5** AAA24120G6** AAA24120G7** AAA24120G8**			AAA24120G1* AAA24120G2* AAA24120G3* AAA24120G4*	57.9 (2.28)	T127-2/B	T24K
						56.3 (2.22)	T140-1/B	T30K
						51.5 (2.03)	T140-2/B	T37K
						50 (1.97)	T140-3/B	T50K

* Parts manufactured prior to 2009-10-01 drawing do not have assembly number stamped on the side of the wedge.

** Parts have assembly number stamped on the side of the wedge.

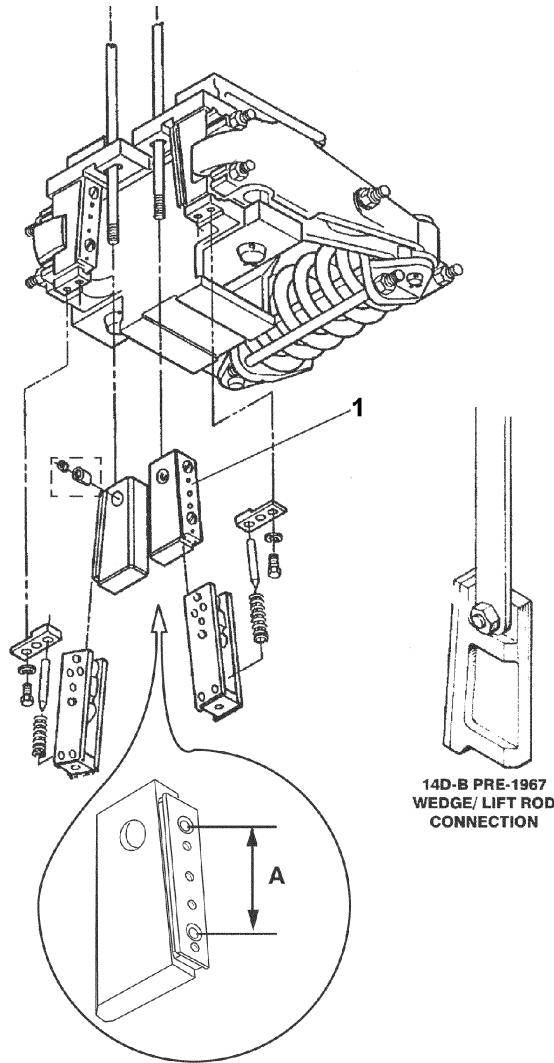
Type 16U-B Safeties

14-AAA24120F



A**24120K		
REF. No.	PART No.	DESCRIPTION
1	AAA24120T1 AAA24120T2	Assembly, Roller Carriage
2	AAA24120L1	Assembly, Wedge, No. 3/4 Rail
	AAA24120L2	Assembly, Wedge, No. 1/2 Rail
	AAA24120L3	Assembly, Wedge, No. OA Rail
3	310AH6	Block, Rubber
4	ISO4014M8X130-8.8Z	Bolt, Hex Head, M8 X 130
5	72DY3	Nut, Barrel (w/set screw)
6	ISO4032M8-10-Z	Nut, Hex, M8
7	ISO4035M8-04-Z	Nut, Jam, M8
8	AAA98JE1	Rod
9	90HB6	Spring, Compression
10	AAA477GE1	Stop, Roller Carriage

**Type 14D-B Safeties
—Wedge Assembly**

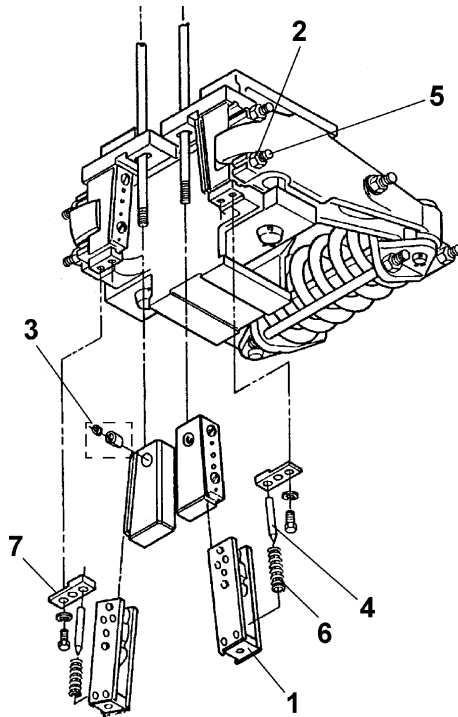


REF. No.	PART No.	RAIL SIZE	DESCRIPTION	VINTAGES
1	AAA7072H5	No. 1	Assembly, Wedge w/Bolted Flat	1937-1960
	AAA7072H6	No. 1/2	Lift Rod Connector, A = 4.5 in.	
	6523B1	No. 1	Assembly, Wedge w/Bolted Flat	1960-1967
	6523B2	No. 3/4	Lift Rod Connector, A = 3.88 in.	
	7122B2	No. 1	Assembly, Wedge, w/Barrel Nut Connection	1967-Present
	7122B3	No. 1/2		
	7122B4	No. 3/4		

(Continued on next page)

Type 14D-B Safeties—Components

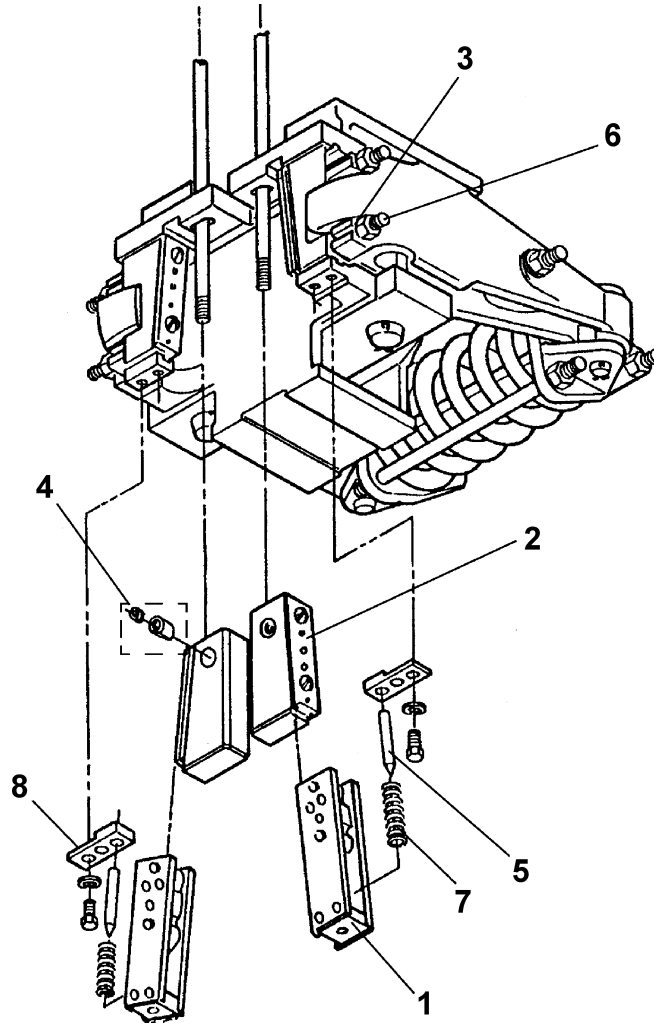
14-AAA24120F



REF. No.	PART No.	DESCRIPTION	VINTAGES
1	AAA6523J4	Assembly, Roller Carriage, AAA7072H5 & H6	1937-1960
	A6523C1 A6523C2	Assembly, Roller Carriage, All Other Wedge Assemblies	1960-Present
2	90PB1	Spring	1937-1960
	310AH4	Block	1960-Present
3	72DY2	Nut, Barrel (w/ set screw), Imperial Thread	1967-Present
	72DY3	Nut, Barrel (w/ set screw), Metric Thread (dyed blue)	1999-Present
4	81PA1	Pin, AAA7072H5 & H6	1937-1960
	77TH1	Pin, All Other Wedge Assemblies	1960-Present
5	96H24	Rod, Threaded, L = 4 in., Thread = 3/8-16	1937-1960
	96H182	Rod, Threaded, L = 4.25 in., Thread = 1/4-20	1960-1967
	96H248	Rod, Threaded, L = 3 in., M6 Metric Thread	1967-1999
	AAA98KE1	Rod, Threaded, L = 3.15 in., M6 Metric Thread	1999-Present
6	90HB6	Spring, Compression	All (1937-Present)
7*	477AS1	Stop, Roller Carriage, AAA7072H5 & H6	1940-1960
	477DR1	Stop, Roller Carriage, All Other Wedge Assemblies	1960-Present

* Roller carriage stop was cast into safety block on 1937-1940 vintage.

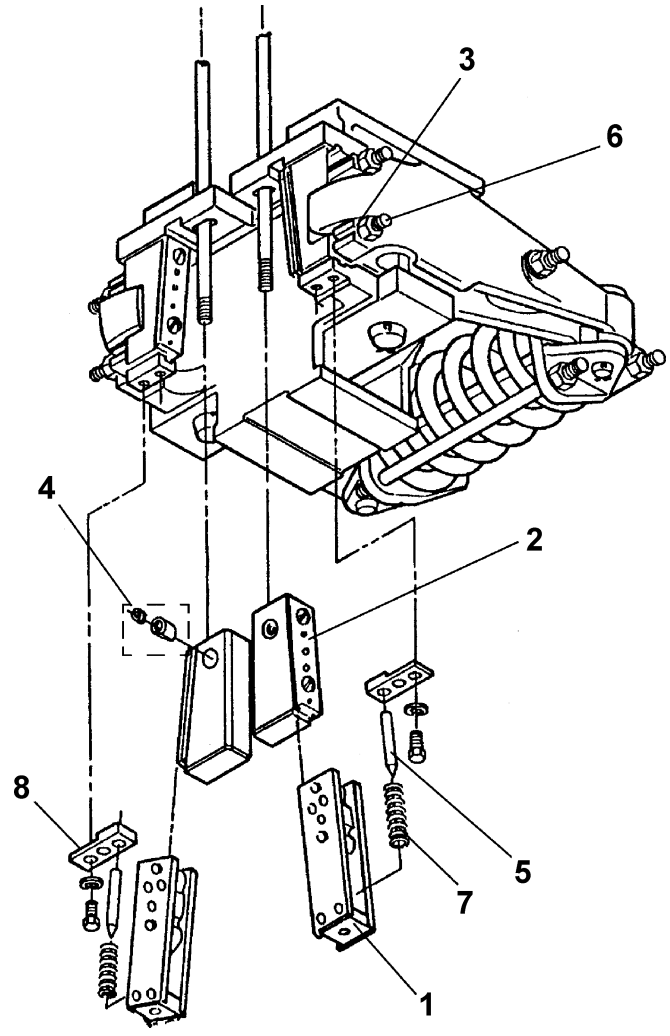
Type 18D-B Safeties



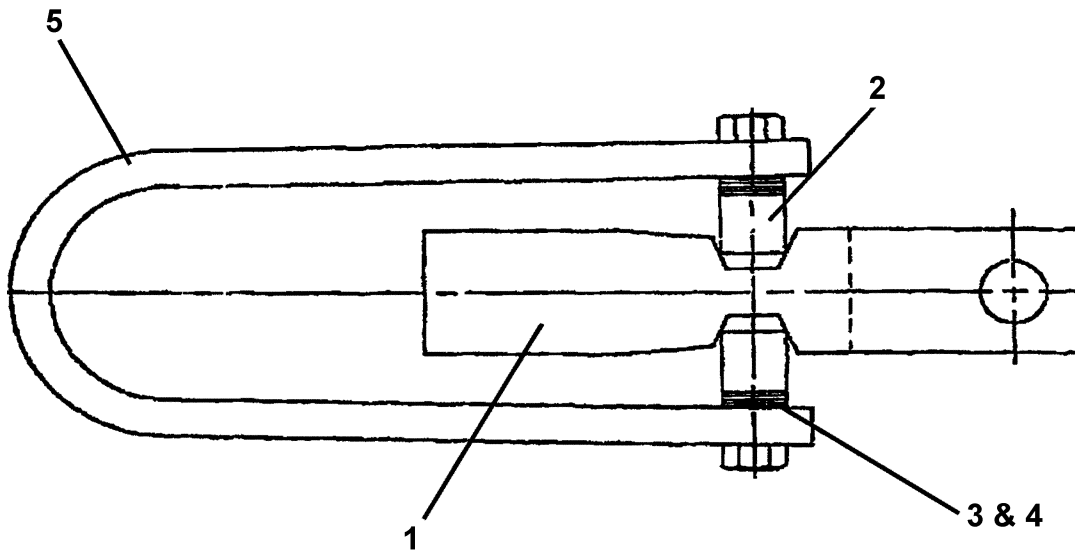
REF. No.	PART No.	DESCRIPTION	VINTAGES
1	6523F1 6523F2	Assembly, Roller Carriage	All (1966-Present)
2	7122B1	Assembly, Wedge (No. 3/4 Rail)	
3	310AH4	Block	
4	72DY2	Nut, Barrel (w/set screw), Imperial Thread	1999-Present
	72DY3	Nut, Barrel (w/set screw), Metric Thread (dyed blue)	
5	77TH1	Pin	All (1966-Present)
6	96H223	Rod, Threaded, L = 3 in., Thread = 1/4-20	1966-1999
	AAA98KE1	Rod, Threaded, L = 3.15 in., M6 Metric Thread	1999-Present
7	90HB6	Spring, Compression	All (1966-Present)
8	477DR1	Stop, Roller Carriage	

Type 25D-B Safeties

14-AAA24120F



REF. No.	PART No.	DESCRIPTION	VINTAGES
1	7124B1	Assembly, Roller Carriage	All (1966-Present)
2	7124C1	Assembly, Wedge, No. OA Rail	
	7124C2	Assembly, Wedge, No. 1/2 Rail	
	7124C3	Assembly, Wedge, No. 3/4 Rail	
3	310AH6	Block	
4	72DY2	Nut, Barrel (w/set screw), Imperial Thread	1999-Present
	72DY3	Nut, Barrel (w/set screw), Metric Thread (dyed blue)	
5	77TH1	Pin	All (1966-Present)
6	96H250	Rod, Threaded, L = 4.5 in., M10 Metric Thread	1966-1999
	AAA98KE2	Rod, Threaded, L = 4.75 in., M10 Metric Thread	1999-Present
7	90HB6	Spring, Compression	All (1966-Present)
8	477ER1	Stop, Roller Carriage	

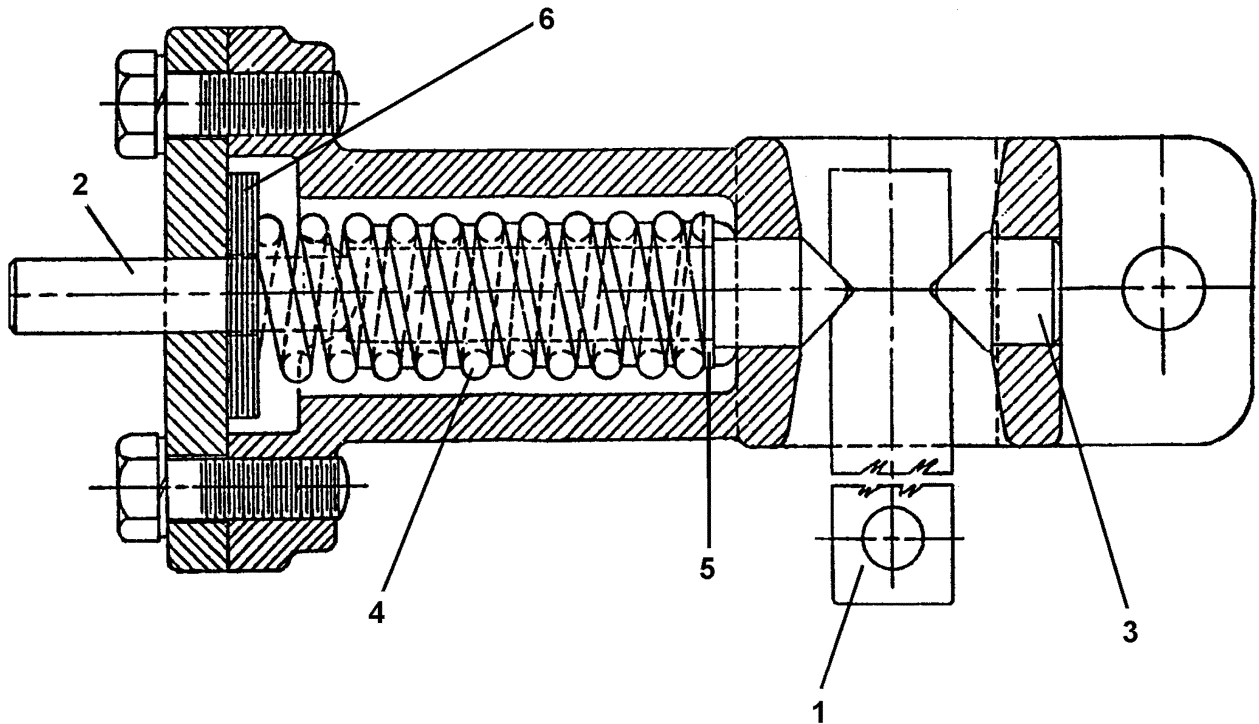


Type 7600AA Releasing Carrier
 (Used only on carframes w/ 9C-B & 11C-B Safeties)

REF. No.	PART No.	DESCRIPTION
1	331BM1	Catch
2	41AF1	Keeper
3	255EG4	Shim, 2 in. x 1/2 in. x 0.0149 in. Thick
4	255EG3	Shim, 2 in. x 1/2 in. x 0.0299 in. Thick
5	93EW1	Spring



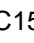

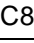

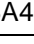



Type A6484A Releasing Carrier

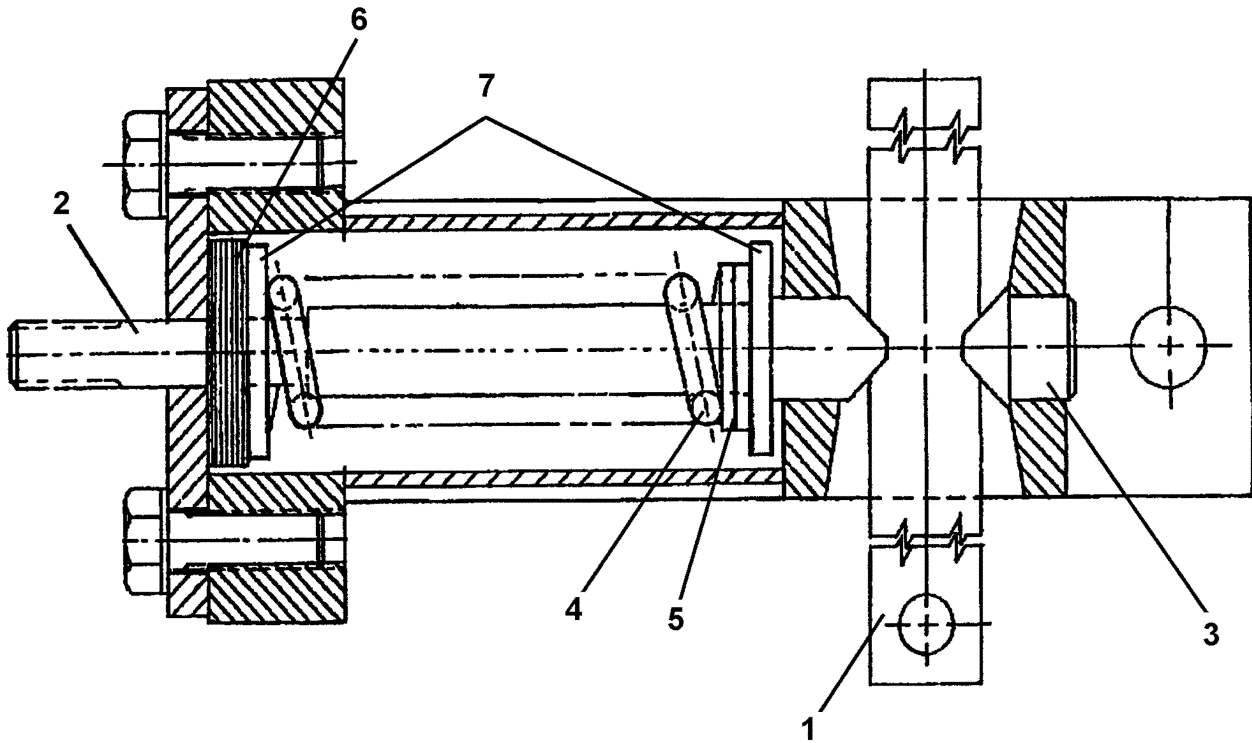
14-AAA24120F



Type A6484A Releasing Carrier

- (Used on carframes w/ 5C-B, 8C-B, 12C-B, 11U-B, 14D-B, 18D-B, & 25D-B Safeties)
- (Also used on counterweight frames w/ 8C-B, 12C-B, & 14C-B safeties)
- Used only for rises up to 600 ft. maximum.

REF. No.	PART No.	DESCRIPTION
1	331G2	Catch ( car safeties)
	331G3	Catch ( counterweight safeties)
2	79EA1	Pin
3	444G1	Plug
4	90XC15	Spring, 1-7/16 in.  , 15/16 in.  , 4-7/16 in. L (for rise up to 400 ft.)
	90XC8	Spring, 1-5/16 in.  , 13/16 in.  , 4 in. L (for rise 400 ft. up to 500 ft.)
5	127BA41	Washer, 1-1/4 in.  , 49/64 in.  , 1/16 in. Thick
6	127VB8	Washer, 2 in.  , 13/16 in.  , 1/32 in. Thick



Type 6484B Releasing Carrier

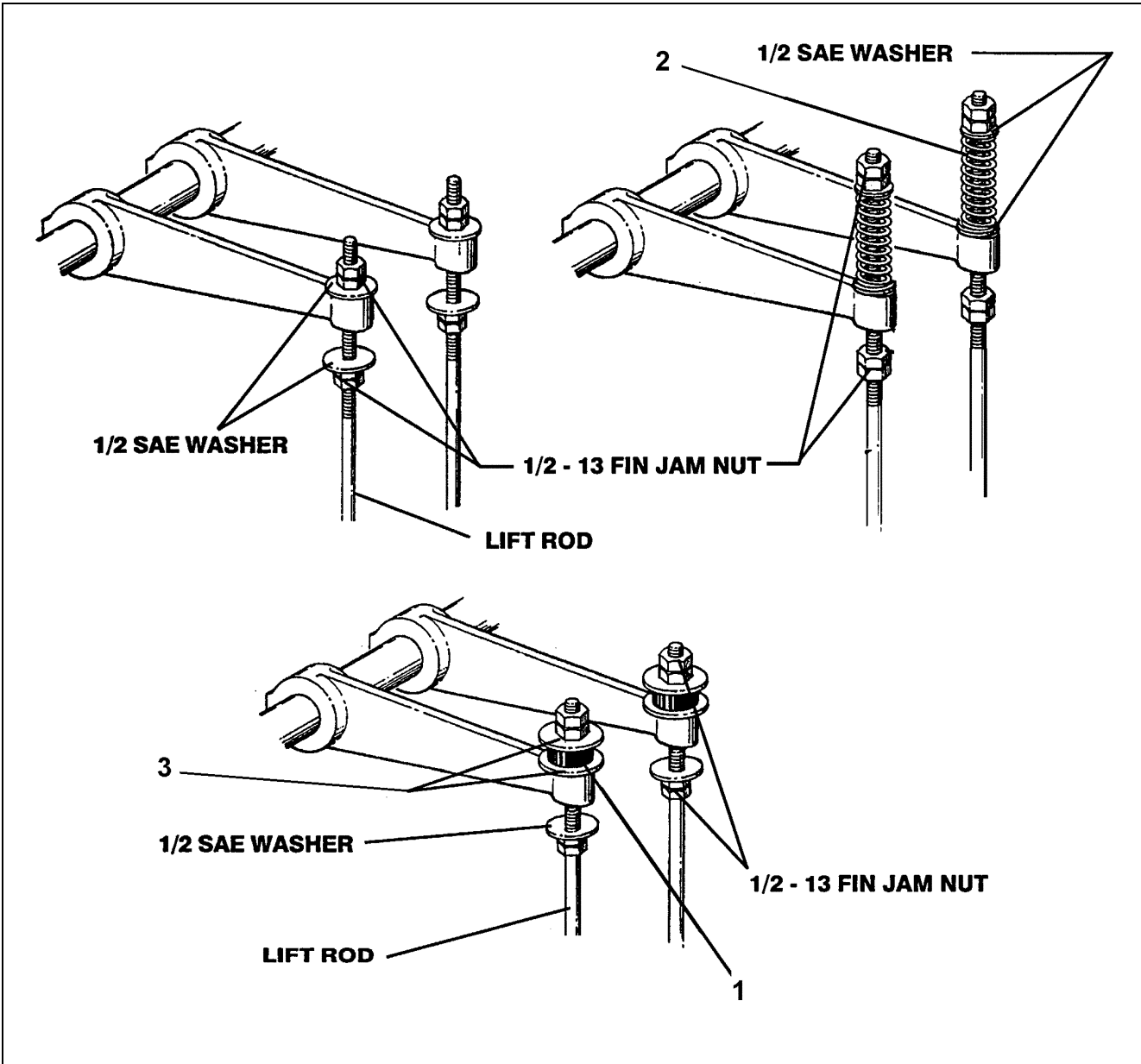
(Used on 14D-B Safeties w/ Tie-Down & 18D-B Safeties)

Note: Used only when the rise is above 500 ft. & inertia compensation is required.

REF. No.	PART No.	DESCRIPTION
1	331G5	Catch
2	79EA2	Pin
3	444G1	Plug
4	90XC8	Spring, 1- 5/16 in. \varnothing , 13/16 in. \varnothing , 4 in. L (for rise 500 ft. up to 1000 ft.)
5	127VB122	Washer, 1-3/8 in. \varnothing , 25/32 in. \varnothing , 1/8 in. Thick
6	127VB49	Washer, 1-7/8 in. \varnothing , 29/32 in. \varnothing , 1/32 in. Thick
7	127VB41	Washer, 1-3/4 in. \varnothing , 49/64 in. \varnothing , 3/16 in. Thick

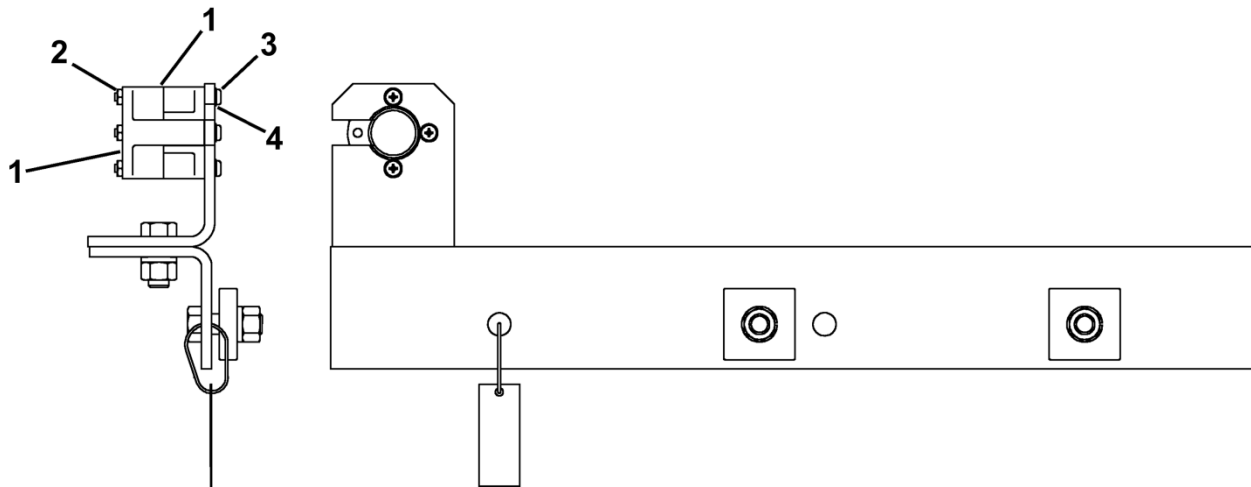
Lift Rod connection Parts

14-AAA24120F



NOTE: These parts apply only to pre-2006 USA-manufactured carframes using Imperial (inch dimensioned) hardware for type 5C, 8C, 9C, 11C, 12C, 14C, 14D, and 18D safeties. They are not to be used on later carframes using metric dimensioned hardware due to interference issues.

REF. No.	PART No.	DESCRIPTION
1	320BE4	Bumper
2	90FC10	Spring, Compression
3	138A1	Washer, Cup



REF. No.	PART No.	DESCRIPTION
1	385JW1	Guide
2	VP-819800	Nut, Hex, 10-32
3	---	Screw, Machine, Pan Head, 10-32 x 2-1/2 in. L
4	130R2	Washer