

**Sill, Threshold &
Threshold Extension
Shapes**

Spare Parts Leaflet

14-AAA50ANN

March 30, 2016 / Page 1 of 17



OTIS

SERVICE ENGINEERING
Otis Elevator Company
Bloomfield, Connecticut USA

Unpublished Work—© Otis Elevator Co.; 2016

Leaflet Description

Various extruded shapes have been used to produce car thresholds, threshold extensions, and hoistway sills for Otis elevator systems. Currently, tooling may not exist for many of these shapes; however, there are a number of available shapes which are very similar and could be used in place of unavailable ones. In cases where there is no currently available alternative to a shape, if desired, tooling could be created to produce the necessary shape, but this must be done on a special order basis. The information provided in this leaflet includes full part numbers for those shapes which have current tooling for some materials and some history of usage. Base part numbers and information to complete an ordering request have been included for those shapes where tooling does not currently exist, or for which there is no history of usage. Always look first for shapes whose profiles are close to what you are attempting to replace to see if that can be used, potentially avoiding the added costs of tooling and minimum runs.

Leaflet Revisions

Date Revised	Subject Matter Expert	Reason for Revision
November 16, 2007	Troy Chicoine	New SPL
June 27, 2008	Troy Chicoine	Corrected typos on pages 18 and 22.
January 5, 2009	Troy Chicoine	Added parts, expanded descriptions to reference 8 on p. 4.
June 2, 2009	Troy Chicoine	Corrected typo on p. 23
March 30, 2016	Troy Chicoine	Clarified illustrations throughout

Related Drawings

Drawing No.	Title	Drawing No.	Title
50J	Self Cleaning Threshold Plate for S/S Door	50AFJ	Shape
50P	Self Cleaning Threshold Plate for C/O Doors	50AJP	Shape, Sill Plate
A50P	Shape, Extruded	50AJR	Extruded Threshold Extension
50R	Threshold Plate & Extension for 2/S & 2/S-C/O Doors	50AJS	Extruded Threshold Extension
50FD	Threshold Plate w/o Extension	50AJV	Shape, Sill Plate for 2/S Hoistway Doors
50HC	Threshold Plate for 3/8" Door or Gate Guides	50AKM	Extruded Threshold Extension
50KF	Shape, Extruded	50AME	Extruded Threshold
50LF	Shape, Extruded	AAA50ANN	Shape, Sill C/O & S/S Hoistways
50YA	Self Cleaning Threshold Plate for S/S Door	AAA50ANP	Shape, Sill 2/S Hoistway
50YX	Threshold Plate for C/O & S/S Doors	AAA50APJ	Shape, Extruded Threshold
50YY	Threshold Plate & Extension for 2/S & 2/S-C/O Doors	AAA50APK	Shape, Extruded Threshold
A50ABM	Sill Plate for C/O & S/S Hoistway Doors	AAA50ATW	Shape, Extruded Threshold
A50ABN	Sill Plate for 2/S Hoistway Doors	AAA50ATX	Shape, Extruded Threshold

Continued on next page

History

14-AAA50ANN

Related Drawings (Continued)

Drawing No.	Title	Drawing No.	Title
50ADN	Threshold Plate for 2/S & 2/S-C/O Doors	AAA50AUD	Shape, Extruded Threshold
50AFC	Sill Plate for C/O & S/S Hoist & Car Doors	AAA50AUE	Shape, Extruded Threshold
50AFK	Shape	AAA50AUG	Shape, Threshold Extension
50AGM	Threshold Plate for 1-1/4" Door	AAA50AUH	Shape, Threshold Extension
50AHF	Extruded Threshold	AAA50AUJ	Shape, Extruded Threshold
50AHG	Extruded Threshold	AAA50AUK	Shape, Extruded Threshold
A50AHP	Shape, Threshold Extension	AAA50AVG	Shape, Extruded Threshold
50AHT	Extruded Threshold	AAA50AVS	Shape, Extruded Threshold
50AHV	Shape, Extruded Threshold	AAA50AVT	Shape, Extruded Threshold
AAA426AP	Spacer, Threshold		

Related Documents

Document ID	Title
25-AAA23100AAB	Hoistway Entrance
25-6178R	Integral Hanger Hoistway Door Systems Center-Opening, Single-Slide, Two-Speed
14-AAA24000BM	NGHR-R1 Carframe Assembly
14-AAA24000BK	Gen2 [®] Extended Duty Carframe Assembly
14-AAA24000AG	Carframe & Platform Assembly
14-AAA24000M	Carframe & Platform (2000-5000 lb. Duty, LVM)
14-AAA24000N	Carframe & Platform (Direct Holeless and Telescope)
14-FAA24011Z	Gen2. 953 kg and 1134 kg Duties Carframe, Platform, Ceiling, and Balustrade
17-6193MJ	Cab Assembly w/7777A/G/H Operator or GAL Operator

Subject Matter Expert

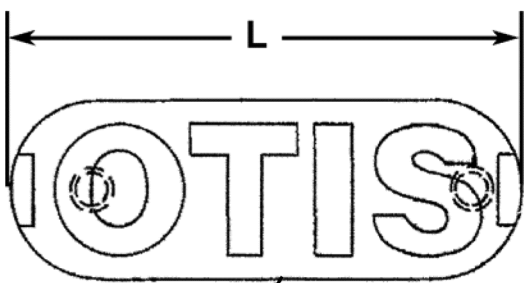
Name	Department
Troy Chicoine	OSC Service Engineering

About Spare Parts Leaflets...

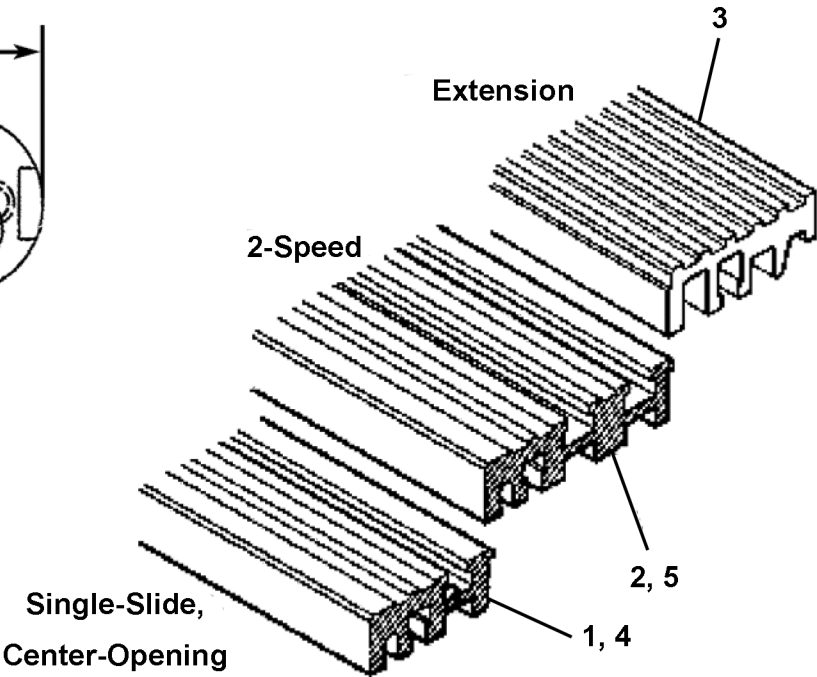
This document lists the lowest replaceable units (LRUs) for the standard version of the product. The LRUs are chosen by a team of Otis associates representing engineering and manufacturing.

While goal of this document is to make parts identification as easy as possible, the document cannot be all-inclusive. Elevator and escalator contracts classified as "special" or "custom" are not addressed here. For such contracts, please refer to specified information, the contract folder, TIPs, Field Education Articles, Construction Letters, etc. for further information.

If you have any suggestions about this document, please contact the subject matter expert listed on this page.



6

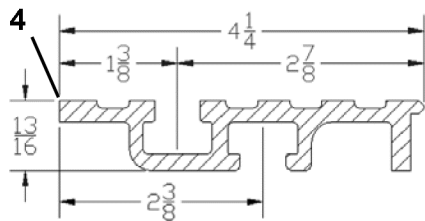
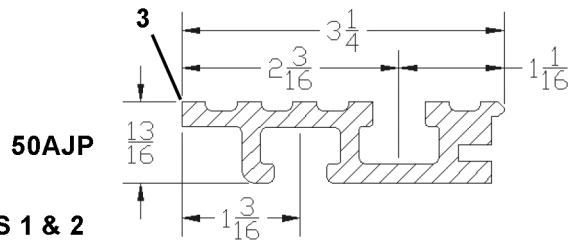
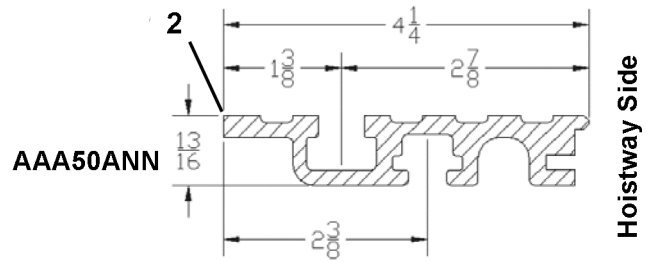
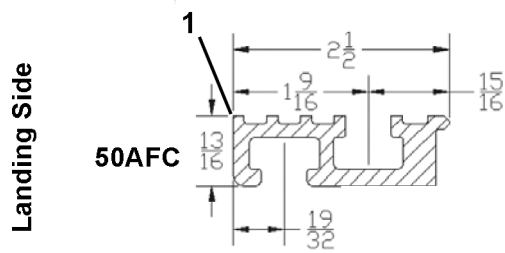


NOTE:
Sill = Hoistway Side
Threshold & Threshold Extension = Car Side

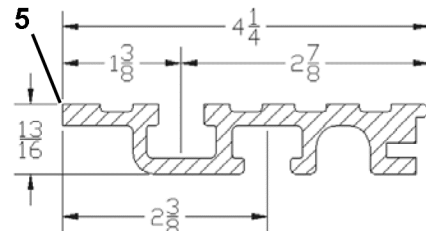
REF. No.	PAGE or PART No.	DESCRIPTION
1	5	Sill, for Single-Speed & Center-Opening Doors
2	6	Sill, for 2-Speed Doors
3	7-8	Threshold Extension
4	9-11	Threshold, for Single-Speed & Center-Opening Doors
5	12-15	Threshold, for 2-Speed Doors
---	16	Threshold, for 3-Speed Doors (Not Shown)
---	17	Plate, Shim (not shown)
6	102HX1-AL	Plate, Name, 2.97 in. L, Aluminum, "Otis"
	102HX1-BR	Plate, Name, 2.97 in. L, Brass, "Otis"
	102HX1-NS	Plate, Name, 2.97 in. L, Nickel Silver, "Otis"
	102A1-41	Plate, Name, 4.85 in. L, Aluminum, "Otis"
	102A1-7	Plate, Name, 4.85 in. L, Brass, "Otis"
	102A1-45	Plate, Name, 4.85 in. L, Nickel Silver, "Otis"

14-AAA50ANN

Single-Speed & Center-Opening Hoistway Sills



A50ABM - No Longer Available
Use AAA50ANN Instead



50AFK - No Longer Available
Use AAA50ANN Instead

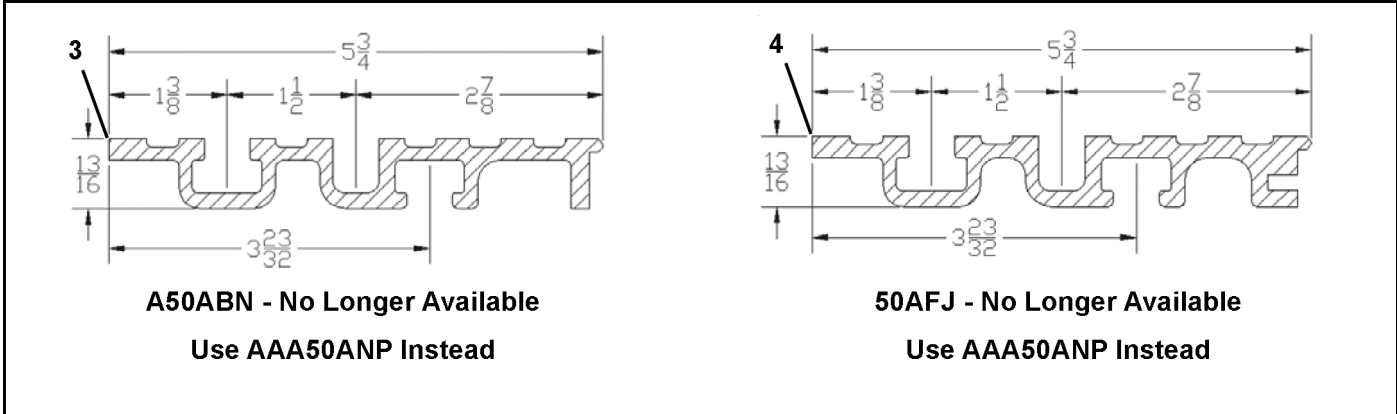
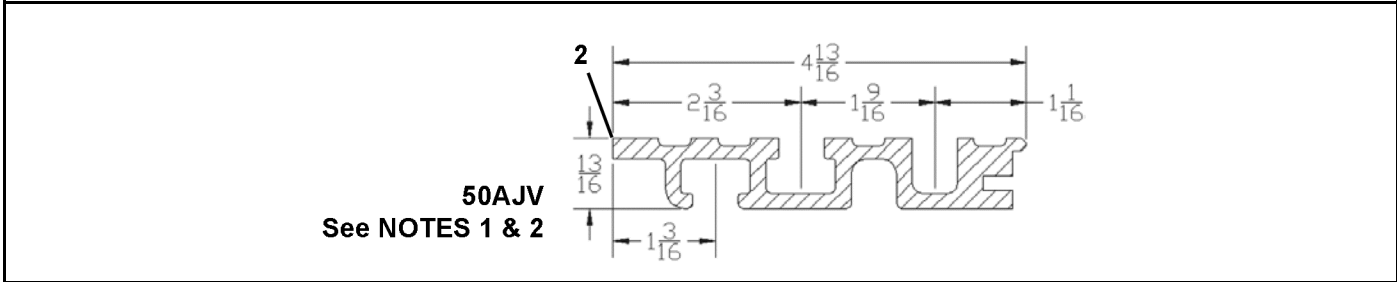
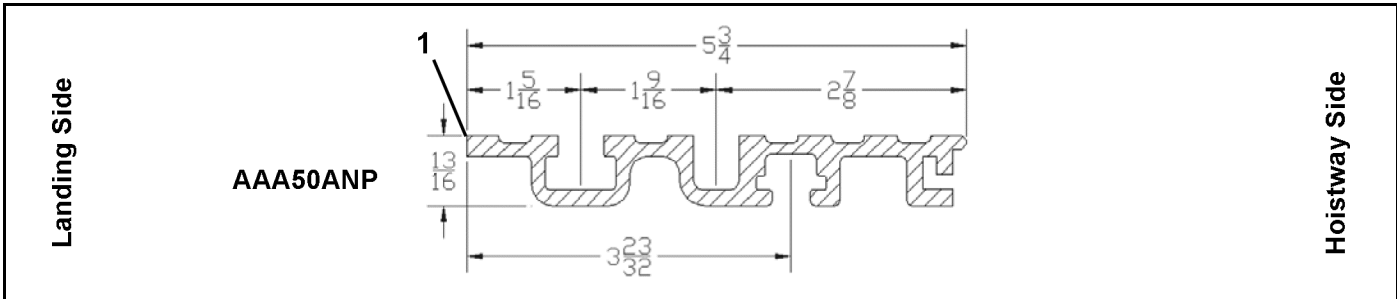
REF. No.	PART No.	MATERIAL	LENGTH (in.)	APPLICATION	DESCRIPTION
1	50AFC-41-99	Aluminum	99	280AF	Shape, Sill for Single-Slide and Center-Opening Doors
	50AFC-45-96	Nickel Silver	96		
	50AFC-7-96	Bronze	96		
2	AAA50ANN-AL-96	Aluminum	96	AAA426AS	Shape, Sill for Single-Slide and Center-Opening Doors
	AAA50ANN-AL-104	Aluminum	104		
	AAA50ANN-NS-96	Nickel Silver	96		
	AAA50ANN-7-120	Bronze	120		
3	50AJP-41-___	Aluminum	---	426AP	No Longer Available Use AAA50ANN
4	A50ABM-AL-104	Aluminum	104	A426AE	
5	50AFK-AL-104	Aluminum	104	RO426F, 426AJ	

NOTE 1: Must be ordered through Customer Service as special orders and may include tooling charges.

NOTE 2: This shape is only available in aluminum, with a material code of 41. The complete part number is formatted as SHAPE-MATERIAL CODE-LENGTH (in inches). For example, a 9-foot length of shape 50AJP would be 50AJP-41-108.

2-Speed Hoistway Sills

14-AAA50ANN



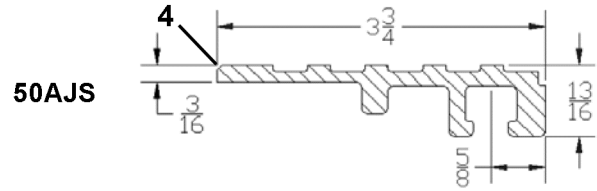
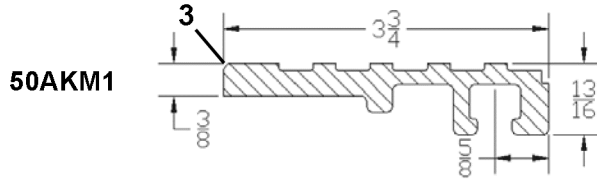
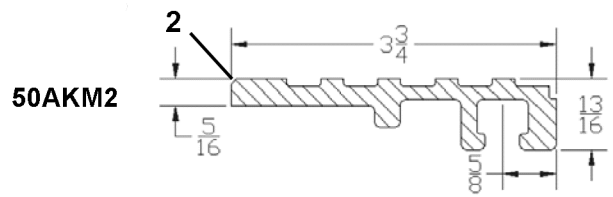
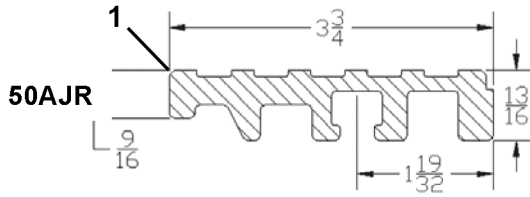
REF. No.	PART No.	MATERIAL	LENGTH (in.)	APPLICATION	DESCRIPTION
1	AAA50ANP-AL-120	Aluminum	120	AAA426AS	Shape, Sill for 2-Speed Doors
	AAA50ANP-45-81	Nickel Silver	81		
	AAA50ANP-NS-96		96		
	AAA50ANP-7-81	Bronze	81		
	AAA50ANP-7-120		120		
2	50AJV-41-___	Aluminum	---	426AP	
3	A50ABN-AL-120	Aluminum	120	A426AF	No Longer Available Use AAA50ANP
	A50ABN-NS-84	Nickel Silver	84		
	A50ABN-7-81	Bronze	81		
4	50AFJ-AL-120	Aluminum	120	426AJ	

NOTE 1: Must be ordered through Customer Service as special orders and may include tooling charges.

NOTE 2: This shape is only available in aluminum, with a material code of 41. The complete part number is formatted as SHAPE-MATERIAL CODE-LENGTH (in inches). Example: a 9-foot length of shape 50AJV would be 50AJV-41-108.

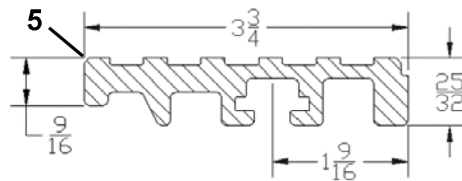
14-AAA50ANN

Car Threshold Extensions



See NOTES 1 & 2

Car Side



AAA50AUG - No Longer Available

Use 50AJR Instead

Threshold Side

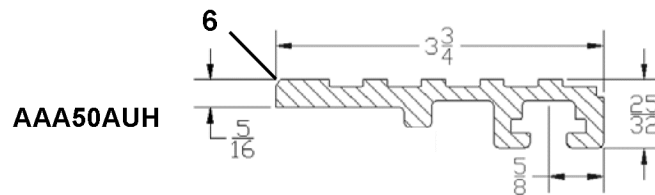
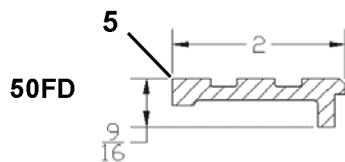
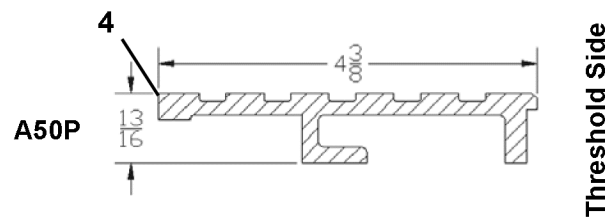
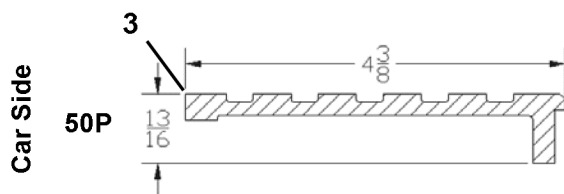
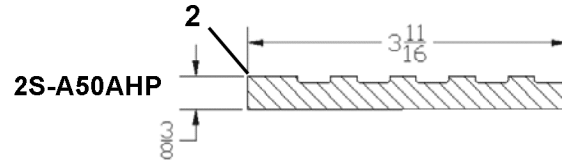
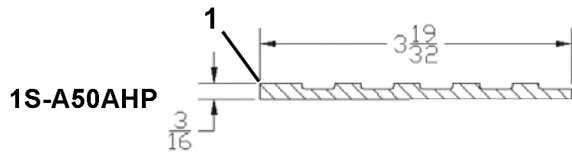
REF. NO.	PART NO.	MATERIAL	LENGTH (in.)	APPLICATION	DESCRIPTION	
1	50AJR-41-48	Aluminum	48	280AS, AAA280AZ	Shape, Threshold Extension	
	50AJR-41-144		144			
	50AJR-45-48	Nickel Silver	48			
	50AJR-45-54		54			
	50AJR-45-144		144			
	2	50AJR-7-48	Bronze			48
		50AJR-7-144				144
3	50AKM2-AL-144	Aluminum	144	280AS	Shape, Threshold Extension	
	50AKM1-AL-60	Aluminum	60			
	50AKM1-NS-60	Nickel Silver				
	50AKM1-BR-60	Bronze				
4	50AJS-___-___	Aluminum = 41 Nickel Silver = 45 Bronze = 7	---	280AS		
5	AAA50AUG-___-___	Aluminum = 41 Nickel Silver = 45 Bronze = 7	---	AAA280AZ	No Longer Available Use 50AJR	

NOTE 1: Must be ordered through Customer Service as special orders and may include tooling charges.

NOTE 2: The complete part number is formatted as SHAPE-MATERIAL CODE-LENGTH (in inches).
Example, a 9-foot length of shape 50FD in aluminum would be 50FD-41-108.

Car Threshold Extensions

14-AAA50ANN



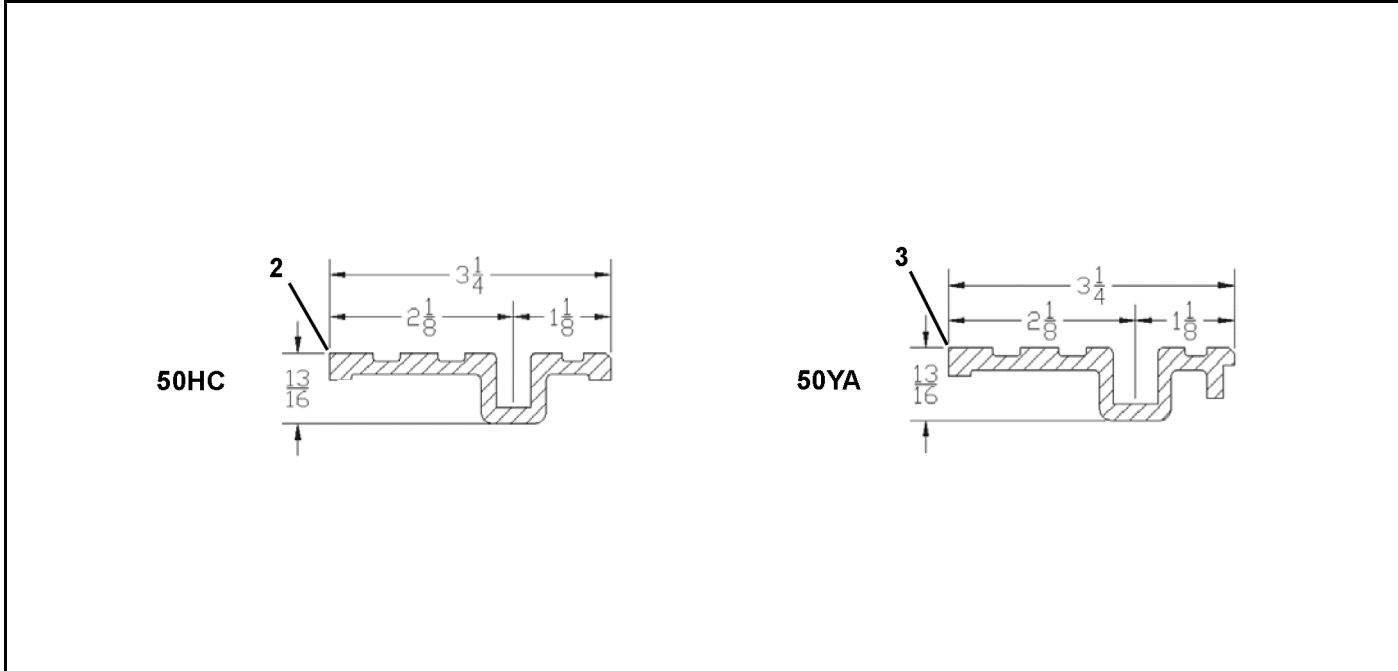
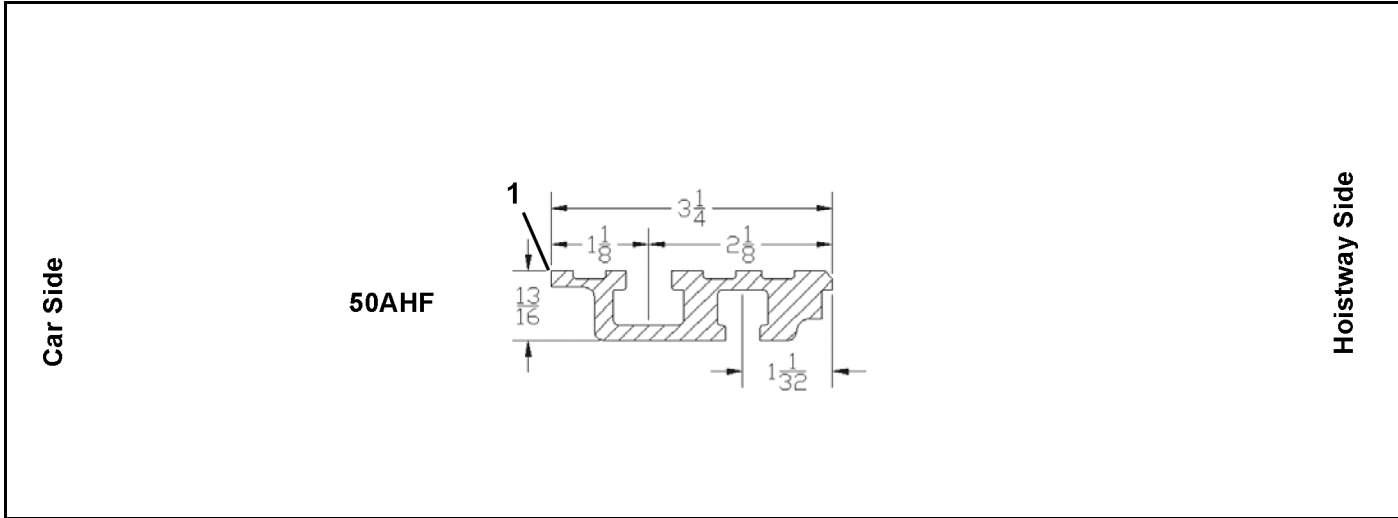
REF. No.	PART No.	MATERIAL	APPLICATION	DESCRIPTION
1	1S-A50AHP-_-_-	Aluminum = 41 Nickel Silver = 45 Bronze = 7	A280AP	Shape, Threshold Extension
2	2S-A50AHP-_-_-		A280AP	
3	50P-_-_-		280D, 280CA	
4	A50P-_-_-		B280D, A280D	
5	50FD-_-_-		A280Z	
6	AAA50AUH-_-_-		AAA280AZ	

NOTE 1: Must be ordered through Customer Service as special orders and may include tooling charges.

NOTE 2: The complete part number is formatted as SHAPE-MATERIAL CODE-LENGTH (in inches).
Example, a 9-foot length of shape 50FD in aluminum would be 50FD-41-108.

Single-Speed & Center-Opening Car Thresholds

14-AAA50ANN



REF. No.	PART No.	MATERIAL	LENGTH (in.)	APPLICATION	DESCRIPTION
1	50AHF-41-84	Aluminum	84	---	Shape, Threshold, S/S & C/O
2	50HC-___-___	Aluminum = 41 Nickel Silver = 45	---	---	
3	50YA-___-___	Bronze = 7	---	A280F, 280H, A280P, A280T	

NOTE 1: Must be ordered through Customer Service as special orders and may include tooling charges.

NOTE 2: The complete part number is formatted as SHAPE-MATERIAL CODE-LENGTH (in inches). Example, a 9-foot length of shape 50HC in aluminum would be 50HC-41-108.

14-AAA50ANN

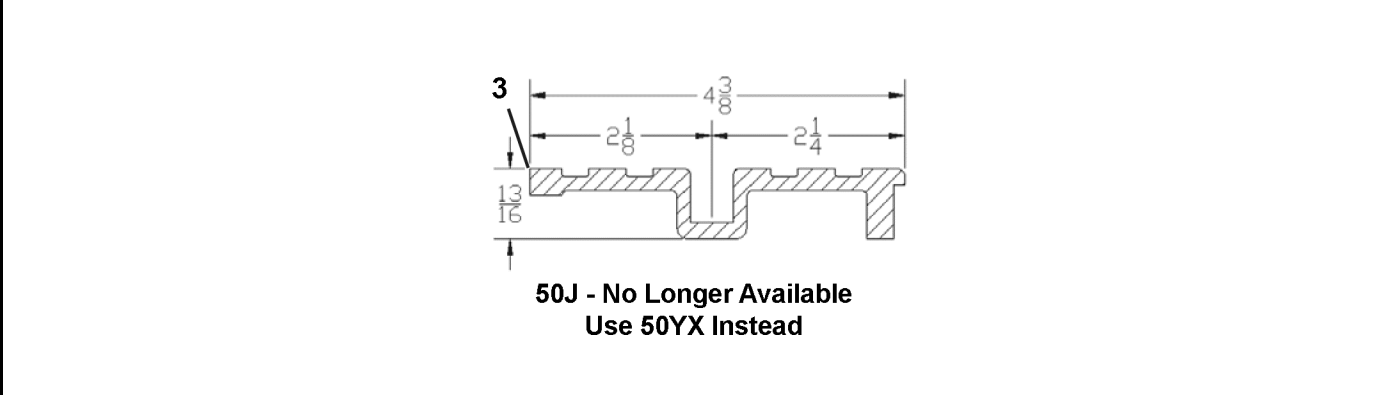
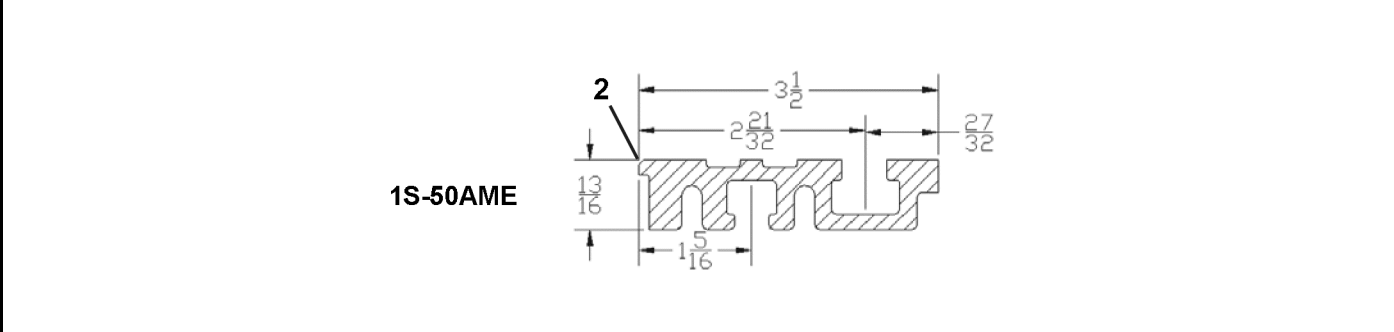
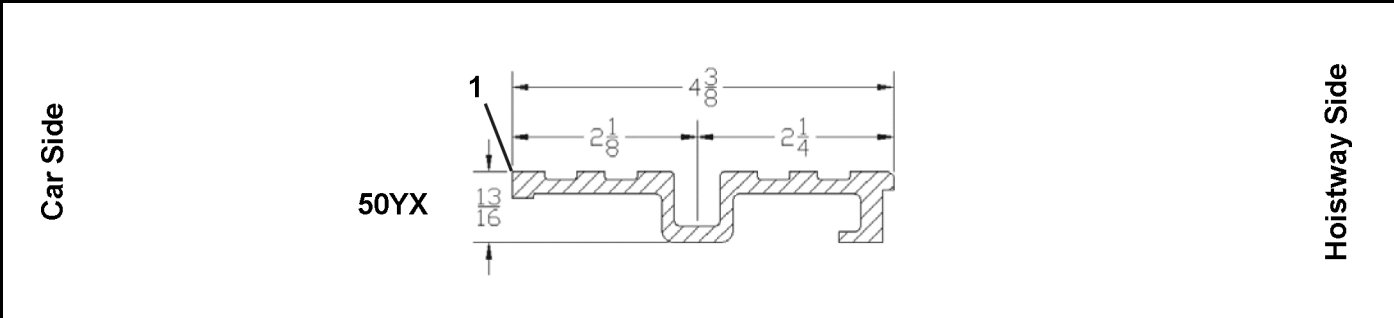
Single-Speed & Center-Opening Car Thresholds

Car Side	<p>1 50AHV</p>	<p>2 AAA50APJ</p>	Hoistway Side		
	<p>3 AAA50AUK</p> <p>See NOTES 1 & 2</p>	<p>4 AAA50ATX</p> <p>See NOTES 1 & 2</p>			
<p>5 AAA50AVG1 - No Longer Available Use 50AHV Instead</p>	<p>6 AAA50AUD1 - No Longer Available Use 50AHV Instead</p>				
REF. No.	PART No.	MATERIAL	LENGTH (in.)	APPLICATION	DESCRIPTION
1	50AHV-AL-72	Aluminum	72	A280AN, AAA280AY	Shape, Threshold For Single-Slide and Center-Opening Doors
	50AHV-AL-144		144		
	50AHV-NS-84	Nickel Silver	84		
	50AHV-NS-144		144		
	50AHV-BR-72	Bronze	72		
2	AAA50APJ-41-84	Aluminum	84	AAA280AW	
	AAA50APJ-45-84	Nickel Silver	84		
	AAA50APJ-7-84	Bronze	84		
3	AAA50AUK-___-___	Aluminum =	---	AAA280AY	
4	AAA50ATX-___-___	41	---	---	
5	AAA50AVG1-___-___	Nickel Silver =	---	AAA280BD	No Longer Available Use 50AHV
6	AAA50AUD1-___-___	45	---		
		Bronze = 7	---		

NOTE 1: Must be ordered through Customer Service as special orders and may include tooling charges.

NOTE 2: The complete part number is formatted as SHAPE-MATERIAL CODE-LENGTH (in inches).
Example, a 9-foot length of shape AAA50AUK in aluminum would be AAA50AUK-41-108.

**Single-Speed & Center-Opening Car
Thresholds**



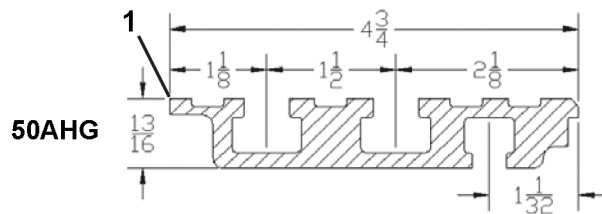
REF. No.	PART No.	MATERIAL	LENGTH (in.)	APPLICATION	DESCRIPTION
1	50YX-41-108	Aluminum	108	A280AB, 280AD, 280AE, 280AH, 280AK, 280AL	Shape, Threshold For Single-Slide and Center-Opening Doors
	50YX-45-84	Nickel Silver	84		
	50YX-45-108		108		
	50YX-7-108	Bronze	108		
2	1S-50AME-___-___	Aluminum = 41	---	280AT	No Longer Available Use 50YX
3	50J-___-___	Nickel Silver = 45 Bronze = 7	---	A280C, 280G, 280J, B280R, A280W, 280AA, 280AB, A280DA	

NOTE 1: Must be ordered through Customer Service as special orders and may include tooling charges.

NOTE 2: The complete part number is formatted as SHAPE-MATERIAL CODE-LENGTH (in inches). Example, a 9-foot length of shape 1S-50AME in aluminum would be 1S-50AME-41-108.

2-Speed Car Thresholds

Car Side



Hoistway Side

See NOTES 1 & 2

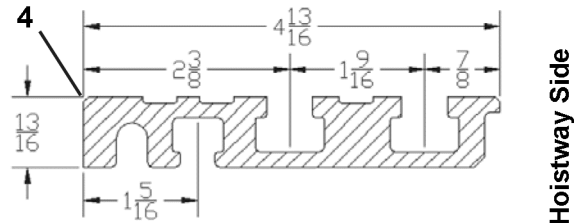
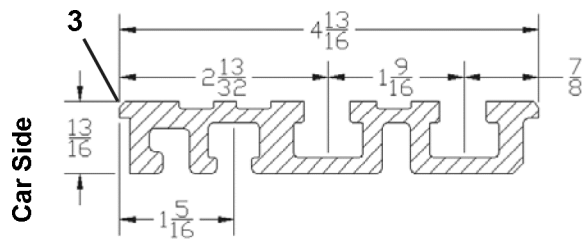
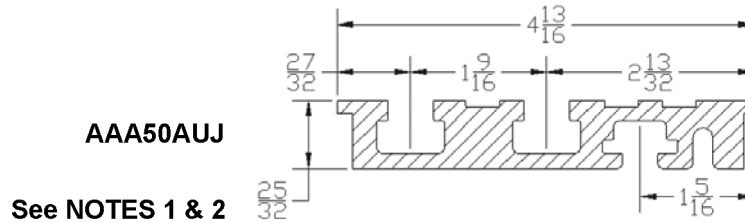
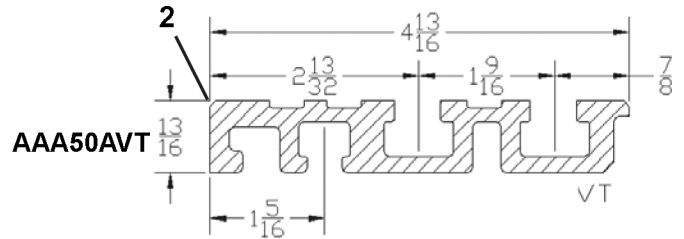
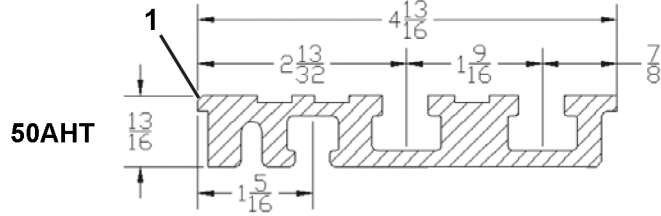
REF. NO.	PART No.	MATERIAL	LENGTH (in.)	APPLICATION	DESCRIPTION
1	50AHG-____-____	Aluminum = 41 Nickel Silver = 45 Bronze = 7	---	AAA280AY	Shape, Threshold For 2-Speed Doors

NOTE 1: Must be ordered through Customer Service as special orders and may include tooling charges.

NOTE 2: The complete part number is formatted as SHAPE-MATERIAL CODE-LENGTH (in inches).
Example, a 9-foot length of shape 50AHG in aluminum would be 50AHG-41-108.

14-AAA50ANN

2-Speed Car Thresholds



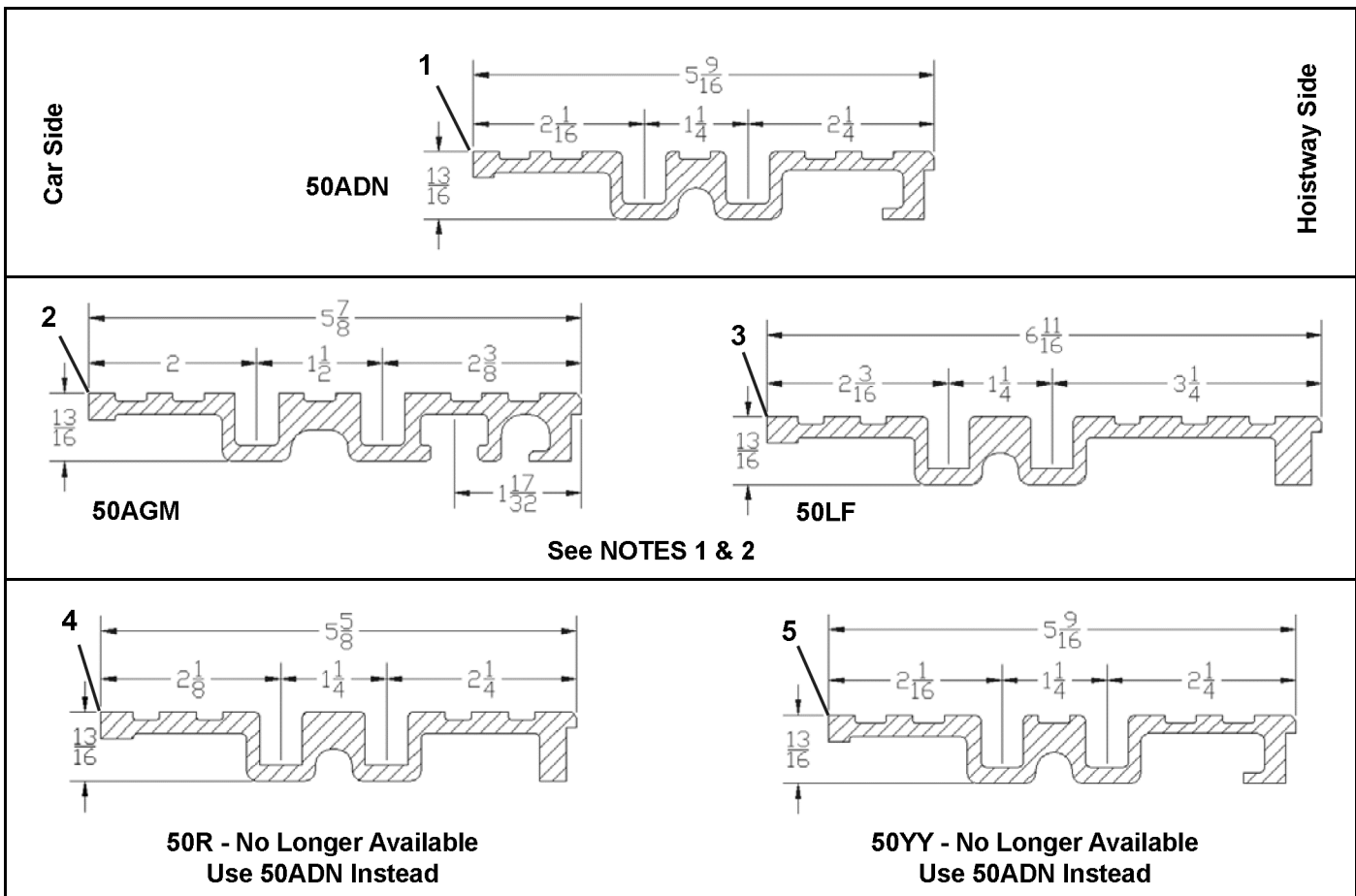
REF. NO.	PART No.	MATERIAL	LENGTH (in.)	APPLICATION	DESCRIPTION
1	50AHT-AL-68	Aluminum	68	A280AN, AAA280AY, AAA280BD	Shape, Threshold For 2-Speed Doors
	50AHT-AL-88		88		
	50AHT-NS-84	Nickel Silver	84		
2	AAA50AVT-45-84	Nickel Silver	84	AAA280BD	
	AAA50AVT-45-92		92		
	AAA50AVT-7-84	Bronze	84		
3	AAA50AUJ-AL-108	Aluminum	108	AAA280AY	No Longer Available Use 50AHT
	AAA50AUJ-___-___	Aluminum = AL Nickel Silver = NS Bronze = BR	---		
4	AAA50AVS-___-___	Aluminum = 41 Nickel Silver = 45 Bronze = 7	---	AAA280AY	
3	AAA50AUE1-41-84	Aluminum	84	AAA280BD	
	AAA50AUE1-45-84	Nickel Silver			
	AAA50AUE1-7-84	Bronze			

NOTE 1: Must be ordered through Customer Service as special orders and may include tooling charges.

NOTE 2: The complete part number is formatted as SHAPE-MATERIAL CODE-LENGTH (in inches).
Example, a 9-foot length of shape 1S-50AME in aluminum would be 1S-50AME-41-108.

2-Speed Car Thresholds

14-AAA50ANN



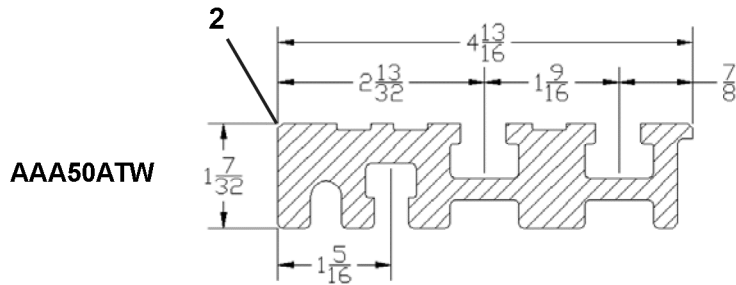
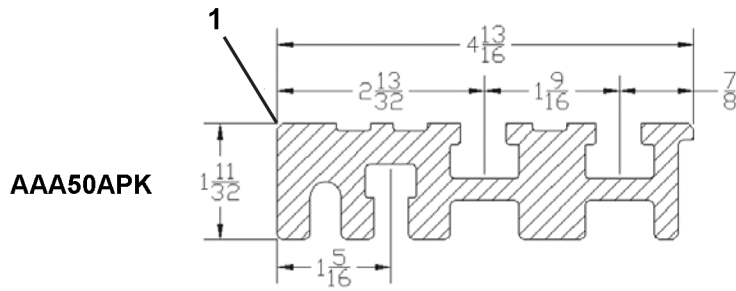
REF. NO.	PART NO.	MATERIAL	LENGTH (in.)	APPLICATION	DESCRIPTION
1	50ADN-41-108	Aluminum	108	A280AB, 280AD, 280AE	Shape, Threshold For 2-Speed Doors
	50ADN-41-72		72		
	50ADN-45-108	Nickel Silver	108		
	50ADN-45-72		72		
	50ADN-45-84		84		
	50ADN-7-108	Bronze	108		
	50ADN-7-72		72		
50ADN-7-84	84				
2	50AGM-___-___	Aluminum = 41	---	A280A, A280B, 280AB, 280BA, 280AM	No Longer Available Use 50ADN
3	50LF-___-___	Nickel Silver = 45	---		
4	50R-___-___	Bronze = 7	---		
5	50YY-___-___		---		

NOTE 1: Must be ordered through Customer Service as special orders and may include tooling charges.

NOTE 2: The complete part number is formatted as SHAPE-MATERIAL CODE-LENGTH (in inches).
Example, a 9-foot length of shape 1S-50AME in aluminum would be 1S-50AME-41-108.

Car Side

Hoistway Side



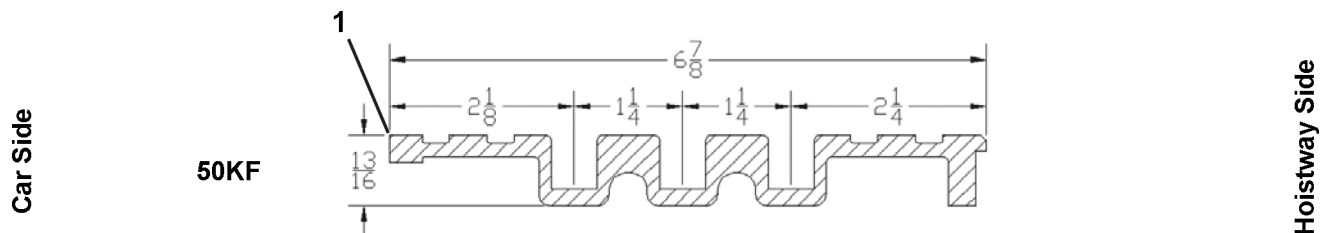
REF. No.	PART No.	MATERIAL	LENGTH (in.)	APPLICATION	DESCRIPTION
1	AAA50APK-41-84	Aluminum	84	AAA280AW	No Longer Available Use 50AHT or AAA50AVT (See Note 1)
	AAA50APK-45-84	Nickel Silver			
	AAA50APK-45-92		92		
	AAA50APK-7-84	Bronze	84		
2	AAA50ATW-____-____	Aluminum = 41 Nickel Silver = 45 Bronze = 7	---	A280A, A280B, 280AB, 280BA, 280AM	No Longer Available Use 50AHT or AAA50AVT (See Note 2)

NOTE 1: Also, order shim, AAA426AP from page 20 to make up 0.52" thickness difference in shapes.

NOTE 2: Also, order shim, AAA426AP from page 20 to make up 0.40" thickness difference in shapes.

3-Speed Doors Car Thresholds

14-AAA50ANN

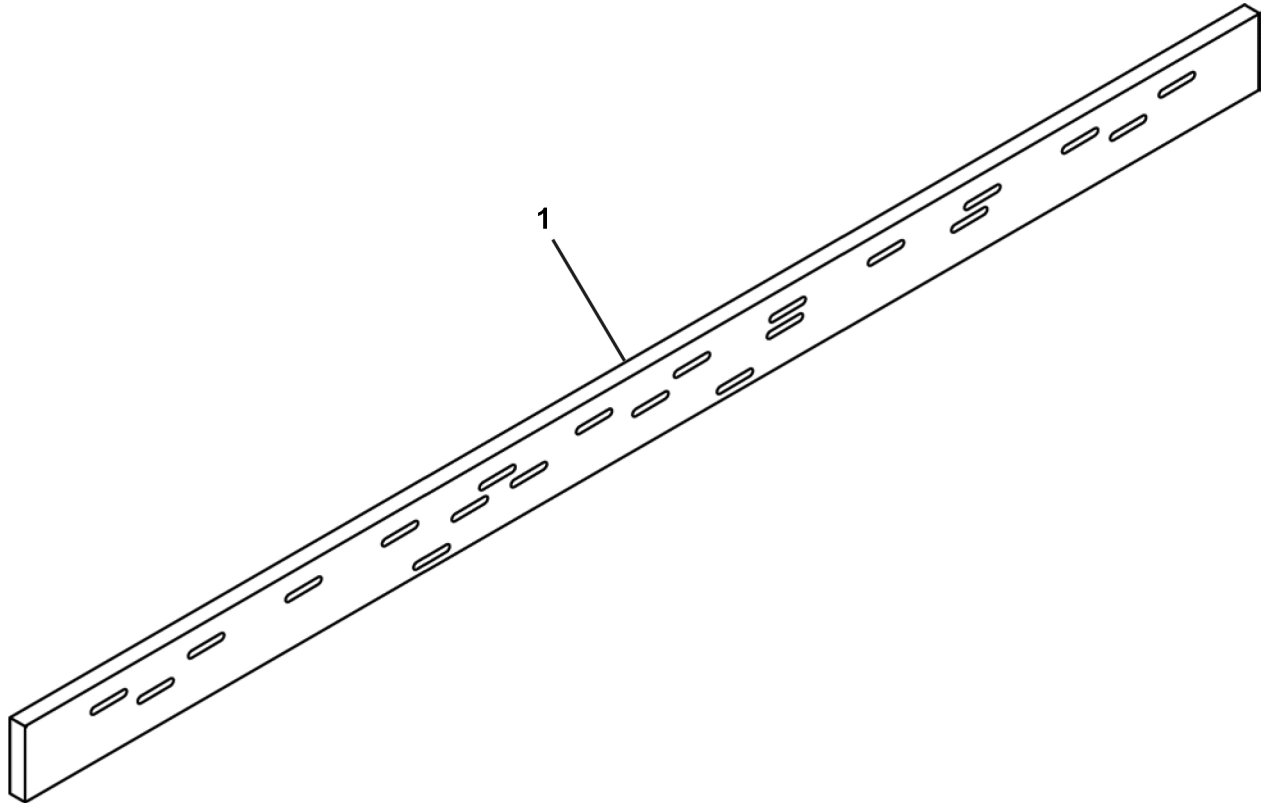


REF. No.	PART No.	MATERIAL	APPLICATION	DESCRIPTION
1	50KF-___-___	Aluminum = 41 Nickel Silver = 45 Bronze = 7	---	Shape, Threshold for 3-Speed Doors

NOTE 1: Must be ordered through Customer Service as special orders and may include tooling charges.

NOTE 2: The complete part number is formatted as SHAPE-MATERIAL CODE-LENGTH (in inches).
Example, a 9-foot length of shape 50KF in aluminum would be 50KF-41-108.

Sill & Threshold Shim Plates



REF. No.	PART No.	LENGTH (in.)	THICKNESS (in.)	WIDTH (in.)	APPLICATION	DESCRIPTION
1	AAA462AP3	70.75	0.25	3.0	Single-Slide, Center-Opening	Spacer, Threshold
	AAA462AP4		0.38			
	AAA462AP16		0.13			
	AAA462AP5	82.75	0.25			
	AAA462AP6		0.38			
	AAA462AP17		0.13			
	AAA462AP11	70.75	0.25	4.5	2-Speed	
	AAA462AP12		0.38			
	AAA462AP20		0.13			
	AAA462AP13	73.75	0.25			
	AAA462AP14		0.38			
	AAA462AP21		0.13			