


OS8000 Safety Gear


OS8000 安全钳

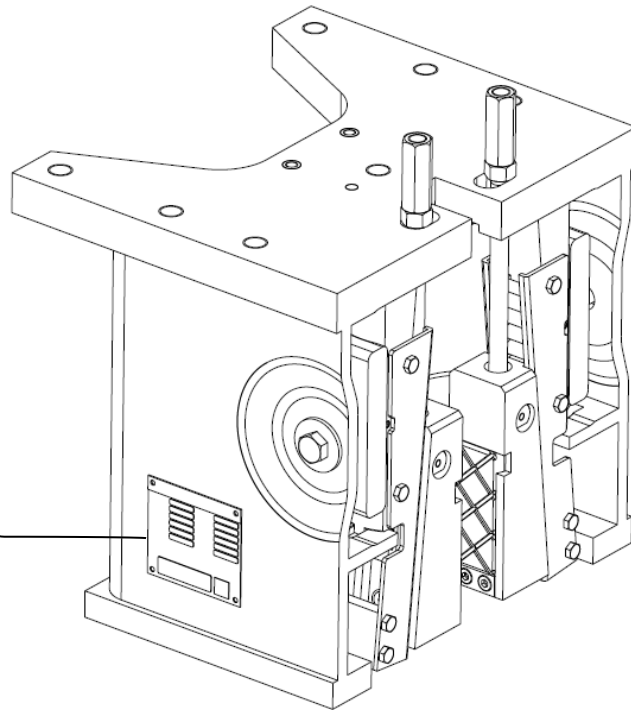
Spare Parts Leaflet

14-DAA24120Q

September 13, 2022 / Page 1 of 4

 濟南式安全鉗 PROGRESSIVE SAFETY GEAR	
型號 NO: OS8000 零件圖號: _____ 零件名稱: _____ 零件規格: _____ 零件圖號: _____ 零件名稱: _____ 零件規格: _____ 零件圖號: _____ 零件名稱: _____ 零件規格: _____	零件圖號: _____ 零件名稱: _____ 零件規格: _____ 零件圖號: _____ 零件名稱: _____ 零件規格: _____ 零件圖號: _____ 零件名稱: _____ 零件規格: _____
CE 名稱: 濟南式安全鉗 零件圖號: 14-DAA24120Q 零件名稱: 安全鉗 零件規格: _____ 零件圖號: _____ 零件名稱: _____ 零件規格: _____ 零件圖號: _____ 零件名稱: _____ 零件規格: _____	

 OTIS TYPE B SAFETY	
零件圖號: _____ 零件名稱: _____ 零件規格: _____ 零件圖號: _____ 零件名稱: _____ 零件規格: _____ 零件圖號: _____ 零件名稱: _____ 零件規格: _____	零件圖號: _____ 零件名稱: _____ 零件規格: _____ 零件圖號: _____ 零件名稱: _____ 零件規格: _____ 零件圖號: _____ 零件名稱: _____ 零件規格: _____
零件圖號: _____ 零件名稱: _____ 零件規格: _____ 零件圖號: _____ 零件名稱: _____ 零件規格: _____ 零件圖號: _____ 零件名稱: _____ 零件規格: _____	



This document does not contain any technical data subject to EAR or ITAR

SERVICE ENGINEERING

Otis Elevator Company

Unpublished Work—© Otis Elevator Co.; 2022

14-DAA24120Q

History

Leaflet Description

This leaflet provides spare parts information for type OS8000 safety gear assembly. These safeties are manufactured by the Hangzhou Huning Elevator Parts Co., Ltd.

该手册为 OS8000 安全钳的备件信息。该安全钳由杭州沪宁电梯部件有限公司制造。

Leaflet Revisions

Date Revised	Subject Matter Expert	Reason for Revision
2020-12-23	Fujun Yang	Add ASME field adjustment
2022-03-16	Fujun Yang	Update safety replacement description
2022-09-13	Alex Luo	Added vintage tag location, updated notes

Related Drawings

Drawing No.	Title	Drawing No.	Title
DAA24120Q	Safety Gear	---	---
---	---	---	---

Related Documents

Document ID	Title
DAA24120Q_FIM	Field Installation Manual
DAA24120Q_BD	Basic Data
OS8000_FAP	Field Adjustment
TIP 17.0-2	Correcting Long and Short Safety Slides

Subject Matter Expert

Name	Department
Fujun Yang	OTIS Shanghai Lead Design Center

About Spare Parts Leaflets...

This document is to make parts identification as easy as possible, the document cannot be all-inclusive. Elevator and escalator contracts classified as “special” or “custom” are not addressed here. For such contracts, please refer to specified information, the contract folder, TIPs, Field Education Articles, Construction Letters, etc. for further information.

If you have any suggestions about this document, please contact the subject matter expert listed on this page.

OS8000 Safety Gear

14-DAA24120Q

It is forbidden to replace any single parts of the safety assembly in the field except connecting nut. The whole safety assembly must be replaced as LRU, please refer to field installation manual DAA24120Q_FIM for details.

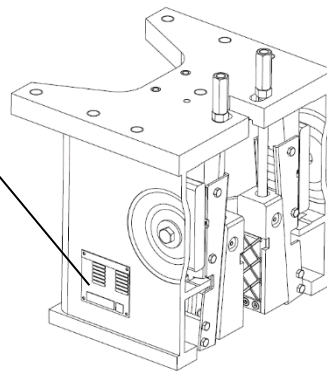
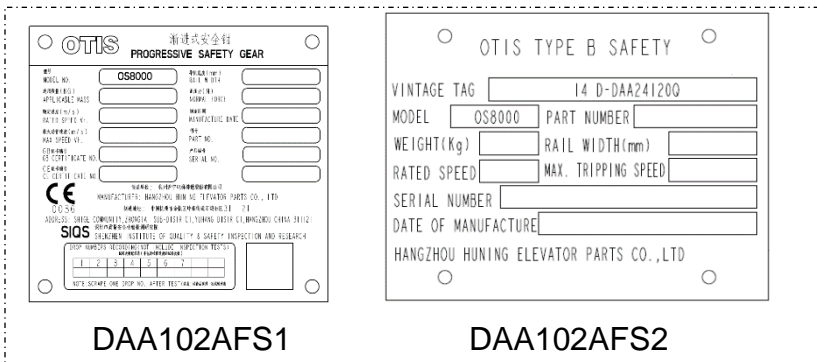
除连接螺母外，工地上禁止替换安全钳装配的任何零件。需要时必须更换整个安全钳，详见工地安装文件 DAA24120Q_FIM。

Notes:

- (1) Safety gear designed life is 30 years;
- (2) GB/CE: Safety gear suggest to be replaced if a freefall drop happens during operation;
- (3) For ASME A17.1 code area,
 - If slide lengths are not code compliant, refer to TIP 17.0-2 for correcting safety slide lengths. If slide lengths are still not code compliant, replace safeties;
 - Refer to OS8000_FAP for replacement safety installation slide length adjustment.
- (4) "LOS (Load on Safety)" express a same meaning to "Applicable Mass" of DAA102AFS1 and "WEIGHT" of DAA102AFS2".

注释:

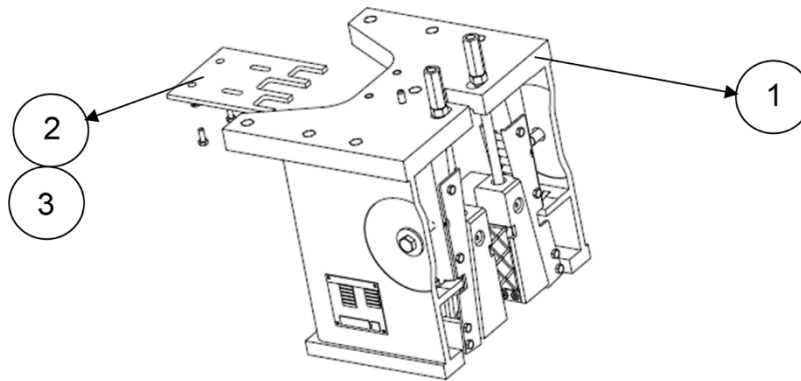
- (1) 安全钳的设计寿命是 30 年；
- (2) GB/CE:在电梯运行中发生自由落体，建议更换安全钳；
- (3) 对于 ASME A17.1 标准区域，
 - 如果滑移长度不满足规范要求，参照 TIP 17.0-2 修正滑移长度。如果调整后还是不能满足规范要求，需要替换安全钳；
 - 如需更换安全钳，安装时制动距离的调整方法参考 OS8000_FAP。
- (4) “安全钳负载”同铭牌件号 DAA102AFS1 上的“适用质量”和 DAA102AFS2 上的“WEIGHT”表示相同意思



14-DAA24120Q

Safety Gear

REF. No. 参考号	PART NO. 件号	DESCRIPTION 描述	REMARKS 备注
1	DAA24120Q999	Assembly, Safety / 安全钳	GB/CE/ASME application (19mm Rail)/ GB/CE/ASME 应用区域(19mm 导轨)
	DAA24120Q998	Assembly, Safety / 安全钳	GB/CE/ASME application (15.88, 16mm Rail)/ GB/CE/ASME 应用区域 (15.88, 16mm 导轨)
2	DAA24120Q400	Service Kit for field adjustment (15.88/16mm rail)	Only for ASME application / 仅适用 ASME 区域
3	DAA24120Q401	Service Kit for field adjustment (19mm rail)	Only for ASME application / 仅适用 ASME 区域



Safety gear part number selection method:

- For replacement of safety order: provide the below information which specified on the name plate
 - Safety part number = _____
 - Code area= _____
 - Rail blade width= _____ mm (Measure rail blade or check layout)
 - Applicable mass= _____ kg
 - Rated speed= _____ m/s
- For new safety assembly order: part number selection method per drawing DAA24120Q.

安全钳件号选择方法:

- 订购用于替换的安全钳, 按照旧安全钳的名牌提供以下信息:
 - 安全钳件号= _____
 - 标准= _____
 - 导轨工作面宽度= _____ mm (测量导轨工作面宽度或核对合同配置)
 - 适用质量= _____ kg
 - 额定速度= _____ m/s
- 订购新安全钳, 件号选取方法见图纸 DAA24120Q