

7-7/8 in. Roller Guide

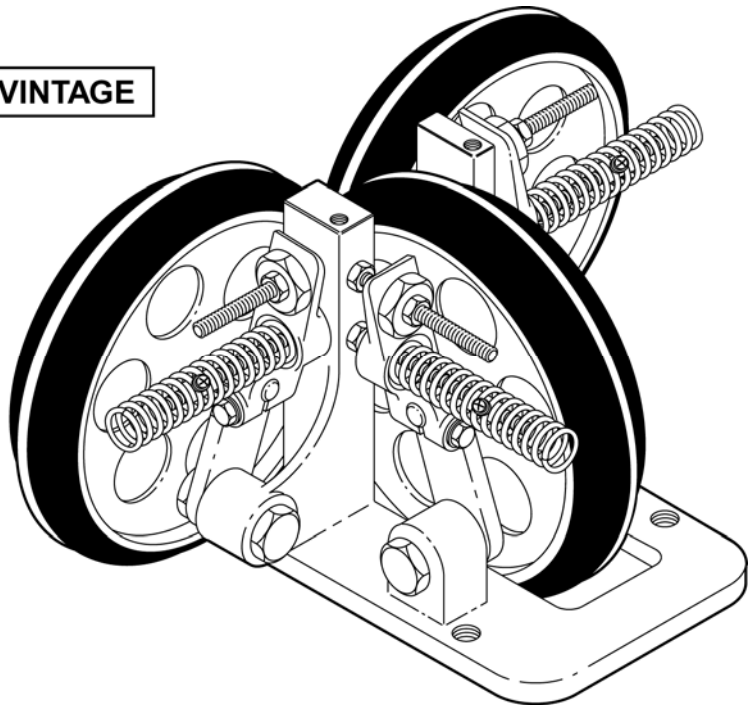
Spare Parts Leaflet 14-E6261C

August 1, 2018 / Page 1 of 9

6261C → E6261C W/O VINTAGE

14	F6261C	
Y	VINTAGE	Y 01
REV	EN	

Prod. Dec. 1999



OTIS

This document does not contain any
technical data subject to EAR or ITAR

SERVICE ENGINEERING
Otis Elevator Company
Bloomfield, Connecticut USA

Unpublished Work—© Otis Elevator Co.; 2018

14-E6261C

History

Leaflet Description

This leaflet was created to break out spare part listings for all vintage 7-7/8 in. roller guides from old SPL C-3033 and C-1022. C-3033 no longer covers any roller guides. This leaflet also supersedes C-1042. F6261C production start was December 1999.

Leaflet Revisions

Date Revised	Subject Matter Expert	Reason for Revision
September 1998	Duane Stupienski	Create new SPL to match record-changed version of roller guides currently being sent out from Bloomington & OSC.
February 14, 2002	Duane Stupienski	Add reference to F6261C and adapter brackets, p 9.
February 5, 2008	Val Sheynkman	Clarification of ref. 3 and 4 on p. 4
August 1, 2018	Juan Murillo	Added reference to TIP 18.1-9; Updated document template

Related Drawings

Drawing No.	Title	Drawing No.	Title
E6261C	7-7/8 in. Roller Guide Assemblies	F6261C	7-7/8 in. Roller Guide Assemblies

Related Documents

Document ID	Title
SPL C-1022	Roller Guides for Car and Counterweight (Obsolete)
SPL C-1042	Type (6261C) 7-7/8 in. Roller Guide (Obsolete)
SPL C-3033	Sliding Guides, Lubricators
TIP 18.1-4	Roller Guide Bushing Driving and Reaming Tools (p/n MT-114392 and MT-106005-1)
TIP 18.1-9	Roller Guide Rebuild Kit

Subject Matter Expert

Name	Department
Juan Murillo	OSC Service Engineering

About Spare Parts Leaflets...

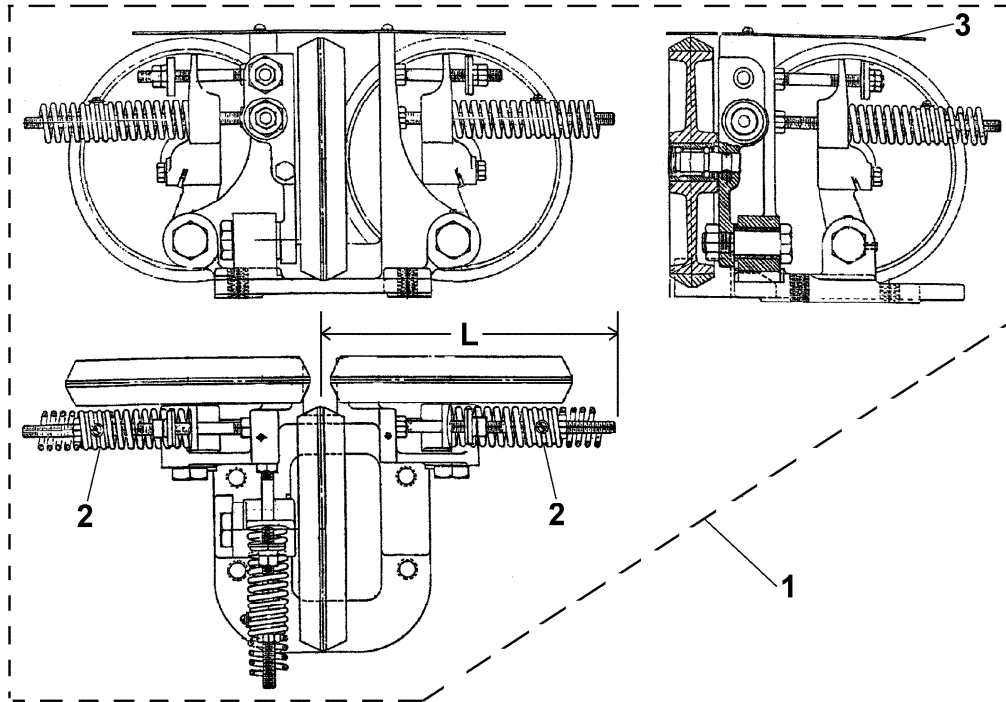
This document lists the lowest replaceable units (LRUs) for the standard version of the product. The LRUs are chosen by a team of Otis associates representing engineering and manufacturing.

While goal of this document is to make parts identification as easy as possible, the document cannot be all-inclusive. Elevator and escalator contracts classified as "special" or "custom" are not addressed here. For such contracts, please refer to specified information, the contract folder, TIPs, Field Education Articles, Construction Letters, etc. for further information.

If you have any suggestions about this document, please contact the subject matter expert listed on this page.

E6261C 7-7/8 in. Roller Guide

14-E6261C



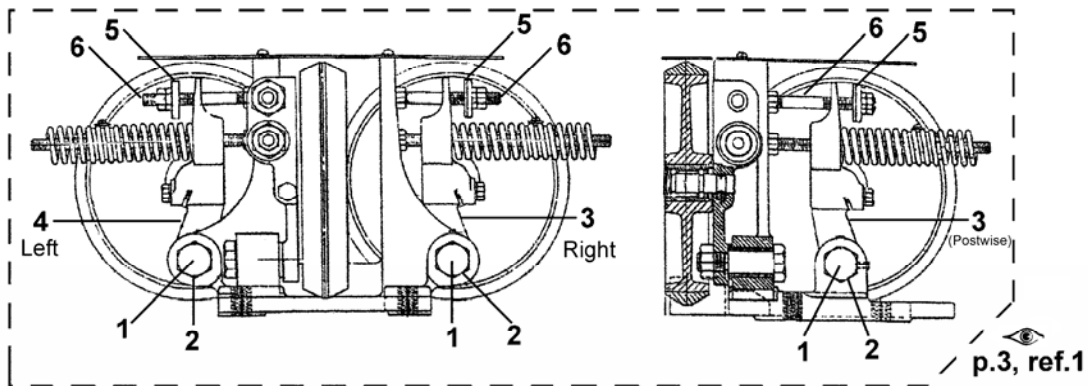
E6261C W/O Vintage Prod. 1961-1999	F6261C 01 Vintage Prod. Dec. 1999 - Present
--	---

REF No.	Part No.		Qty.	Description	Rail Size	Position
1	E6261C1	F6261C1	1	Assembly, Complete Car Roller Guide, 9.75 in. L	1, 1-1/2	Top
	E6261C2	F6261C2			3/4	
	E6261C3	F6261C3	1	Assembly, Complete Counterweight Roller Guide, 8.19 in. L	1, 1-1/2	Top
	E6261C4	F6261C4	1	Assembly, Complete Car Roller Guide, w/o Guard, 9.75 in. L	1, 1-1/2	Bottom
	E6261C5	F6261C5			3/4	
	E6261C6	F6261C6	1	Assembly, Complete Counterweight Roller Guide, w/o Guard, 8.19 in. L	1, 1-1/2	Bottom
2	149AG2	149AG4	3	Anchor, Spring, w/Hardware		
3	B384NB1		1	Guard		

(Continued on Next Page)

14-E6261C

E6261C 7-7/8 in. Roller Guide



E6261C W/O Vintage Prod. 1961-1999	F6261C 01 Vintage Prod. Dec. 1999 - Present
--	---

REF No.	Part No.		Qty.	Description	
1	*59P2	---	3	Bolt, Hex Head, w/Grease Fitting, (👁 TIP 18.1-4)	
	A59P1	---		Bolt, Hex Head, w/o Grease Fitting, 5/8-11 Thread (👁 TIP 18.1-4)	
	---	A59P2		Bolt, Hex Head, w/o Grease Fitting, M16 x 2,0 mm Thread (👁 TIP 18.1-4)	
2	335H1	---	3	Bushing, Flanged, Oil-less, 3/4 in. ⌀, 1 in. L, 1-1/2 in. L (for Stand); (👁 TIP 18.1-4 and MT-114392 Tool, p. 5)	
3	B288CK1	---	2	Lever, 2 Places, Imperial Taps	
	---	B288CK3		Lever, 2 Places, , Metric Taps	
4	B288CK2	---	1	Lever, Imperial Taps	
	---	B288CK4		Lever, Metric Taps	
5	72BF2	---	3	Nut, 3/8 in. Tap w/Leather Washer	
	---	72BF4		Nut, M10 Tap	
6	96H185	---	3	Rod, 3/8 in. Dia., 4 in. L	
	---	AAA96AAA14		Rod, 10 mm X 102 mm, M10 Thread	
**	488H1	---	1	Wick, Oil-Lubricated Pivots Only (Ref. 1, A59P1 and A59P2)	

* Used in early E6261C (1961-1987 production).

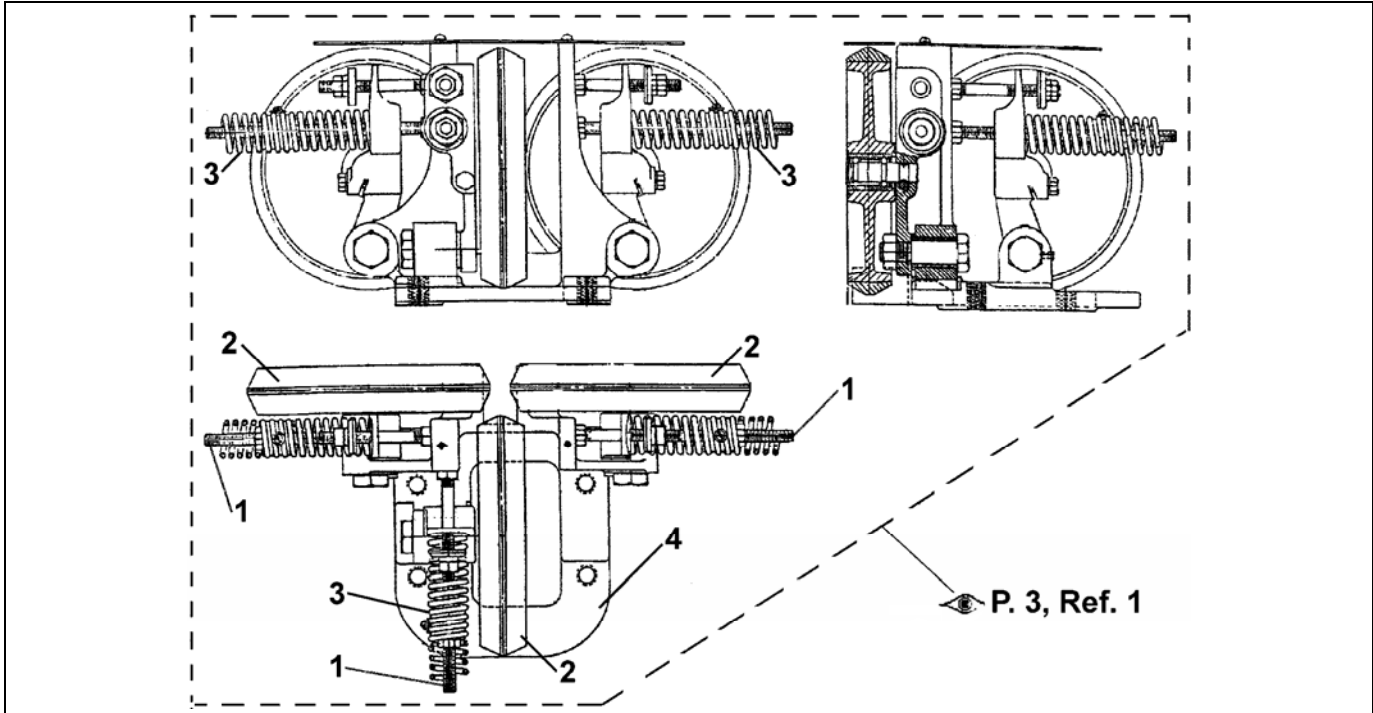
** For reference only. Part not shown.

NOTE: See TIP 18.1-9 for roller guide rebuild kits.

(Continued on Next Page)

E6261C 7-7/8 in. Roller Guide

14-E6261C



E6261C W/O Vintage Prod. 1961-1999	F6261C 01 Vintage Prod. Dec. 1999 - Present
--	---

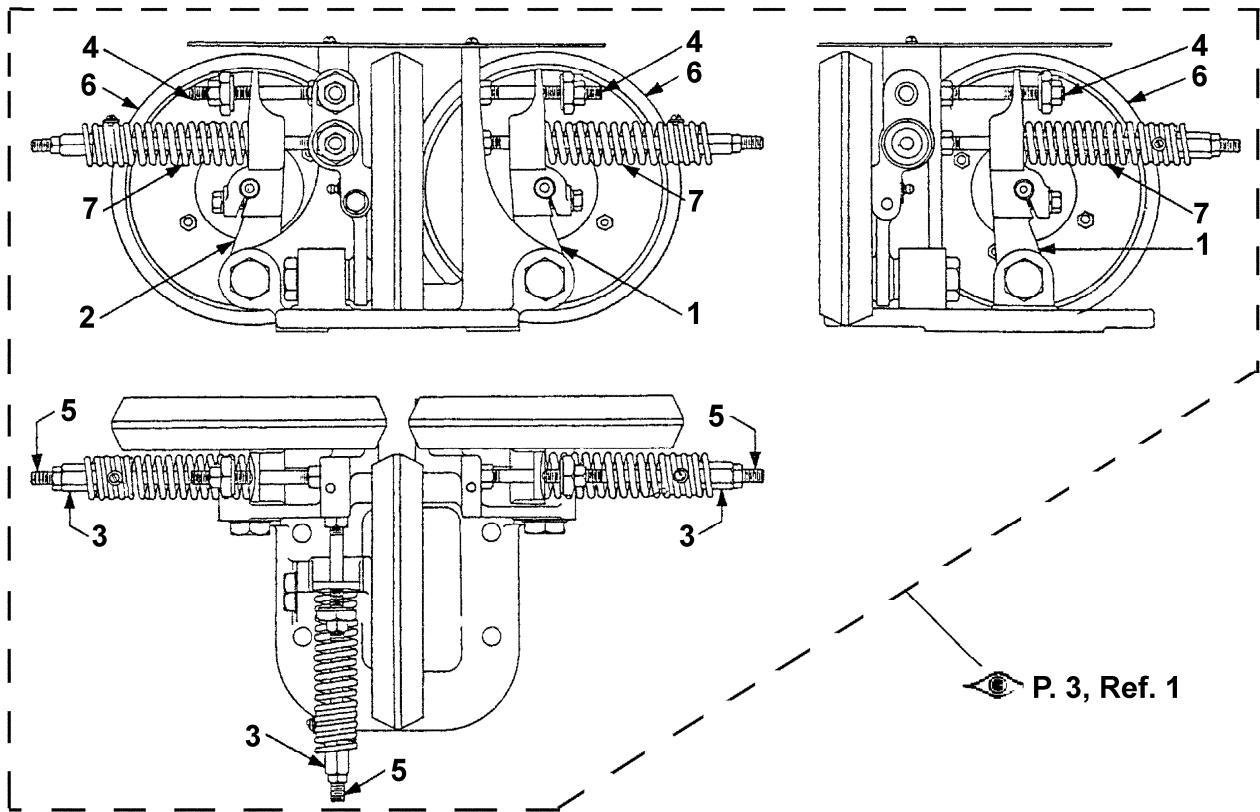
REF No.	Part No.		Qty.	Description
1	96H189	---	3	Rod, 3/8 in. Dia., 8 in. L
	---	AAA96AAA12		Rod, 10 mm X 204 mm, M10 Thread
	96CJ50	---		Rod, 6.44 in. L, Counterweight Guides Only
	---	AAA96AAA13		Rod, 10 mm X 163 mm, Counterweight Guides Only
2	456CL4		3	Roller w/Ball Bearing
3	90BN1		3	Spring, 29/32 in. , 6 in. L, 15 Active Turns
4	D471EA2	D471EA6	1	Stand w/Bushings (for 1 & 1-1/2 Guide Rail)
	D471EA4	D471EA8		Stand w/Bushings (for 3/4 guide rail)
*	MT-106005-1		1	Tool, Bushing Reamer, TIP 18.1-4.
*	MT-114392		1	Tool, Roller Guide Bushing Driving. (For more information TIP 18.1-4.)

* For reference only. Part not shown.

NOTE: See TIP 18.1-9 for roller guide rebuild kits.

14-E6261C

Parts for D6261C 7-7/8 in. Roller Guides

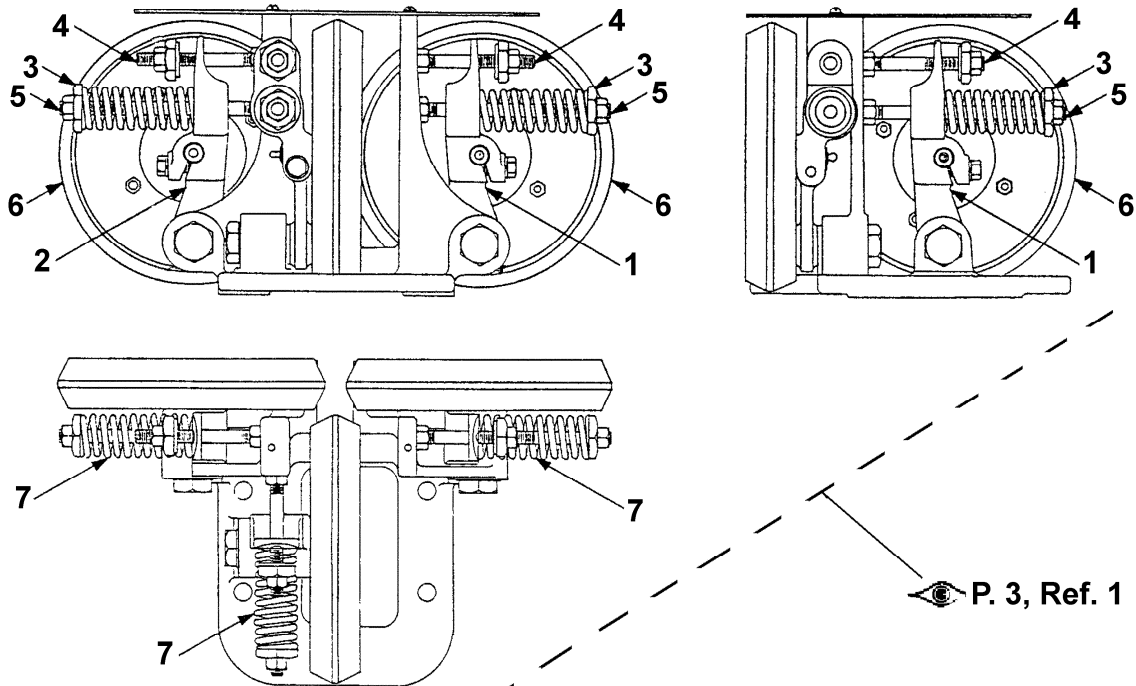


NOTE: For parts not called out, see parts for E6261C version guide on pp. 3 through 5.

D6261C
1960-61 Prod.

REF. No.	PART No.	QTY.	DESCRIPTION
1	A288CK1	2	Lever
2	A288CK2	1	Lever
3	72AF4	3	Nut, 3/8 in. Tap, Special
4	96H79	3	Rod, 3/8 in. ⌀, 4 in. L
5	96H167	3	Rod, 3/8 in. ⌀, 9 in. L
6	456AJ2	3	Roller, 7-7/8 in. Ball Bearing, w/Pin
7	90BM1	3	Spring, 1-1/4 in. ⌀, 6 in. L, 15-1/2 Active Turns

NOTE: See TIP 18.1-9 for roller guide rebuild kits.



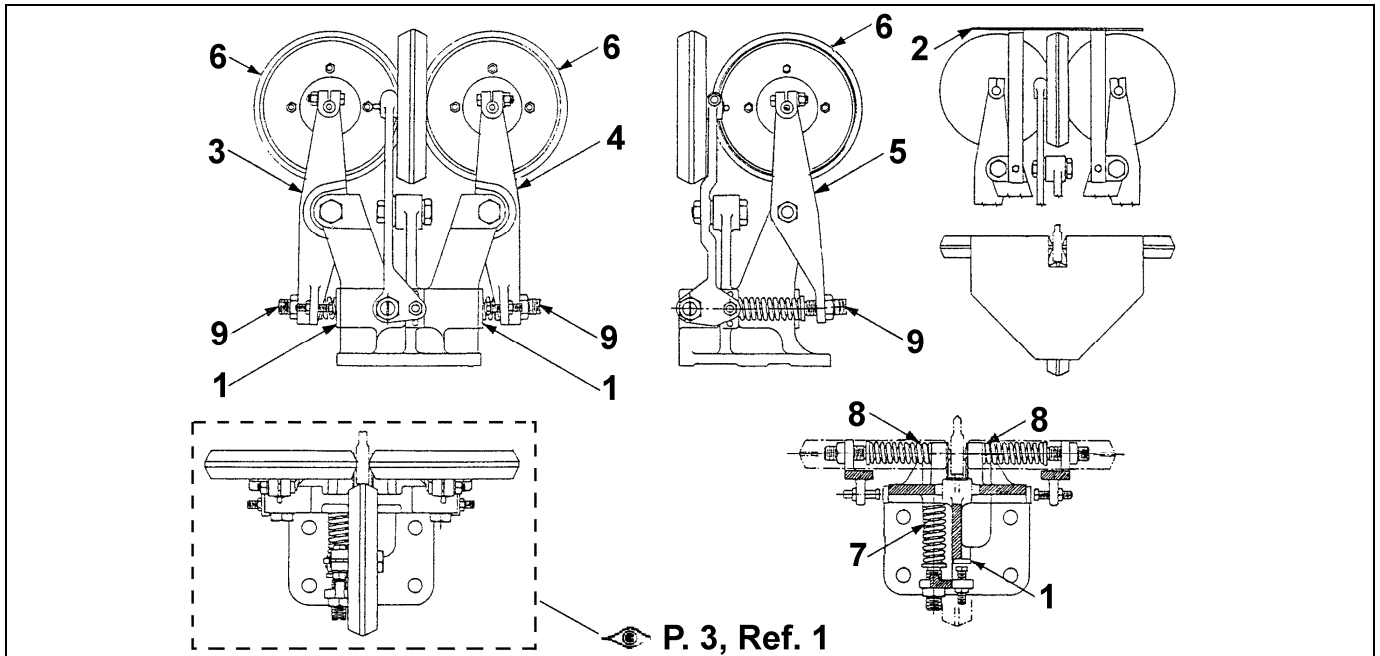
NOTE: For parts not called out, see parts for E6261C version guide on pp. 3 through 5.

C6261C1 1947-1959 Prod.			
REF. No.	PART No.	Qty.	Description
1	A288CK1	2	Lever
2	A288CK2	1	Lever
3	72BE1	3	Nut, Hex Head, 3/8 in. Tap, Special
4	96H79	3	Rod, 3/8 in. \varnothing , 4 in. L
5	96H80	3	Rod, 3/8 in. \varnothing , 6-1/4 in. L
6	456AJ2	3	Roller, 7-7/8 in. Ball Bearing, w/Pin
7	90JC13	3	Spring (white stripe), 1-1/4 in. \varnothing , 4-3/16 in. L, 12-1/2 Active Turns

NOTE: See TIP 18.1-9 for roller guide rebuild kits.

14-E6261C

Parts for B6261C 7-7/8 in. Roller Guides

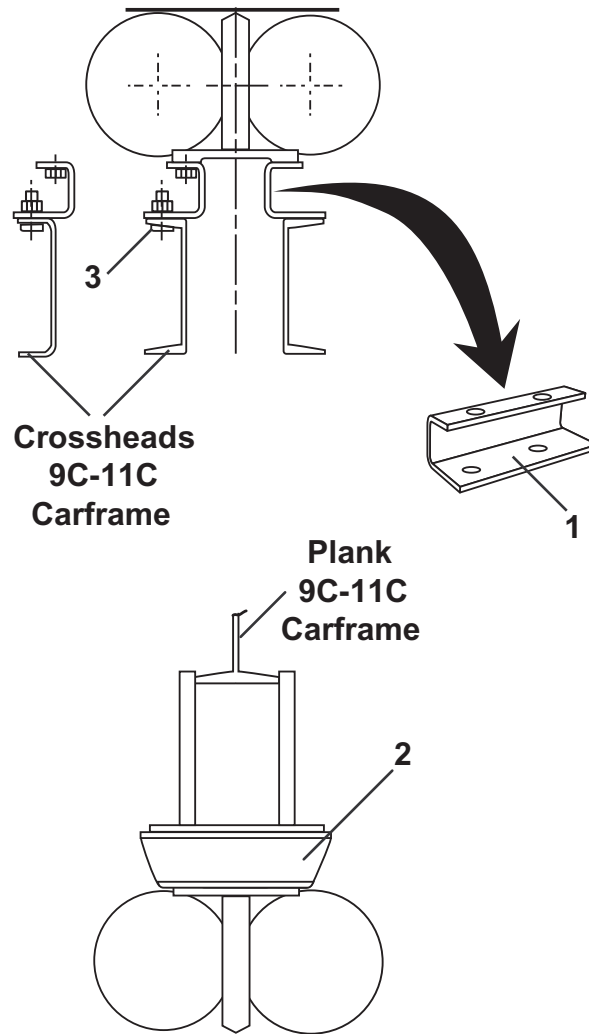


B6261C1 to 7 and
2054D1
1941-1947 Prod.

NOTE: For parts not called out, see parts for E6261C version guide on pp. 3 through 5.

REF.No	Part No.	Qty.	Description
1	320AE1	3	Bumper, 7/8 in. W, 2 in. L, 1/4 in. Thick, Leather (for stand)
2	A384NB1	1	Guard, 1-1/4 in. Slot
	A384NB2		Guard, 1-3/4 in. Slot
3	288CK1	1	Lever
4	288CK2	1	
5	288CJ1	1	
6	456AJ2	3	Roller, 7-3/4 in., Ball Bearing, w/Pin
7	90JC8	1	Spring, Postwise Roller (blue stripe), 27/32 in. \odot , 3-7/16 in. L, 10-1/2 Active Turns, 0.077 in. Dia. Wire
	90NC8		Spring, Postwise Roller (white stripe), 29/32 in. \odot , 3-7/16 in. L, 9 Active Turns, 0.207 in. Dia. Wire
8	90NC8	2	Spring, Postwise Roller (white stripe), 29/32 in. \odot , 3-7/16 in. L, 9 Active Turns, 0.207 in. Dia. Wire
9	95Z1	3	Stud, Roller Guide, 2-5/8 in. L

NOTE: See TIP 18.1-9 for roller guide rebuild kits.



	Pre 1997	Post 1997		
REF. No.	PART No.		DESCRIPTION	APPLICATION
1	---	AAA316GBR1	Bracket, As Shown	9C and 11C Carframes and Counterweights
	---	*AAA316GBR2	Bracket, Opposite Hand	
2	316APN1	---	Bracket, Adapter, Unhanded w/Beveled Ends	5C Carframes and Counterweights
3	---	131A2	Washer, Bevel, 5/8	11C Carframes and Counterweights

* For reference only-part not shown.