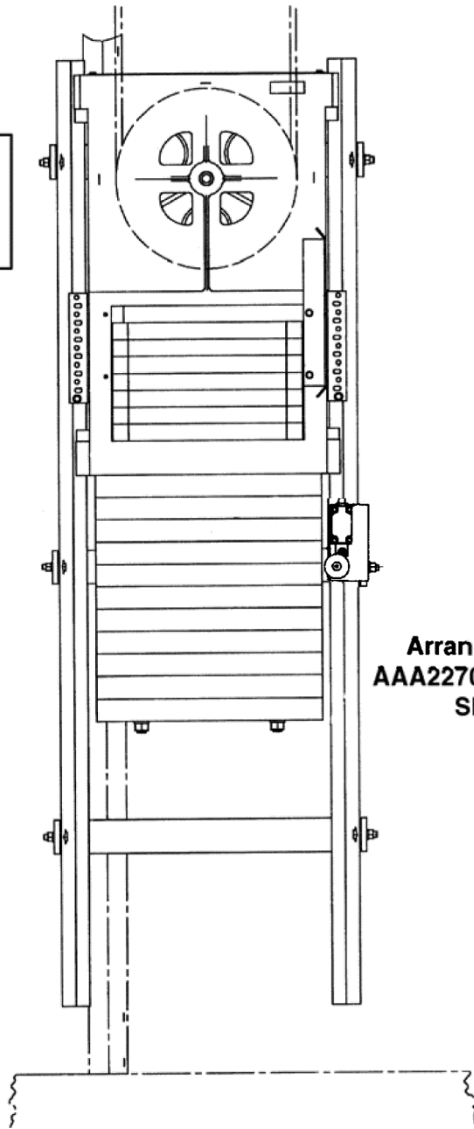


**Counterweight
Governor Rope
Tightener**

**Spare Parts Leaflet
15-AAA22700AAA**

June 18, 2014 / Page 1 of 3

**W/O
VINTAGE**



**Arrangements
AAA22700AAA4, 5, 6
Shown**

OTIS

**SERVICE ENGINEERING
Otis Elevator Company
Bloomfield, Connecticut USA**

Unpublished Work—© Otis Elevator Co.; 2014

Leaflet Description

This former pointer SPL lists LRUs for type AAA22700AAA and AAB22700AAA governor rope tightener arrangements.

Leaflet Revisions

Date Revised	Subject Matter Expert	Reason for Revision
October 1, 2002	Duane Stupienski	New Pointer SPL
March 15, 2002	Duane Stupienski	This former pointer SPL now lists LRUs for type AAA22700AAA governor rope tightener arrangements
June 18, 2014	Gary Mendrala	Updated cover illustration; Replaced switch and bracket on p. 3

Related Drawings

Drawing No.	Title	Drawing No.	Title
AAA22700AAA	CWT Governor Rope, Tightener		

Related Documents

Document ID	Title
SPL 15-6481AD	Type 6481AD Rope Tightener

Subject Matter Expert

Name	Department
Gary Mendrala	OSC Service Engineering

About Spare Parts Leaflets...

This document lists the lowest replaceable units (LRUs) for the standard version of the product. The LRUs are chosen by a team of Otis associates representing engineering and manufacturing.

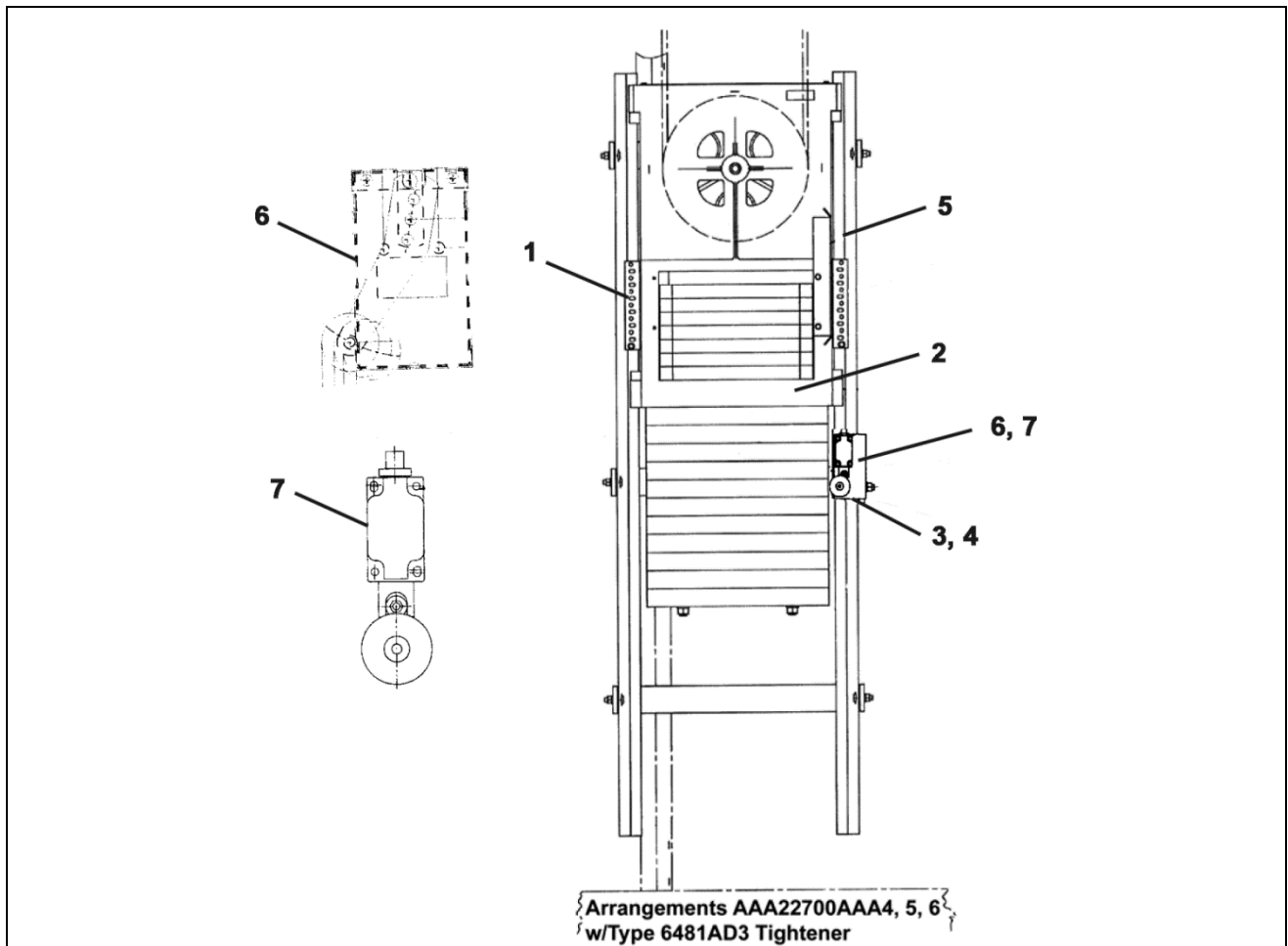
While goal of this document is to make parts identification as easy as possible, the document cannot be all-inclusive. Elevator and escalator contracts classified as “special” or “custom” are not addressed here. For such contracts, please refer to specified information, the contract folder, TIPs, Field Education Articles, Construction Letters, etc. for further information.

If you have any suggestions about this document, please contact the subject matter expert listed on this page.

Slack Rope Switch (CEN)

15-AAA22700AAA

Arrangement CWT Tension Frame



	AAA22700AAA	AAB22700AAA	
REF. No.	PART No.		DESCRIPTION
1	283JV1		Angle
2	6481AD2		Assembly, Tension Frame (not shown); Complete, w/o Weights, w/o Ratchet Frame, See SPL 15-6481AD
	6481AD3		Assembly, Tension Frame (shown); Complete, w/o Weights, w/ Heavy Load Bearings, Suited for Additional (10) Bottom Weights 955 lb. Application, See SPL 15-6481AD
3	AAA283APX1	---	Bracket
4	---	AAA283APX2	Bracket
5	AAA327NY1		Cam (Overall Length = 15 inches)
6	AAA6098NM3	---	Switch, Limit
7	---	AAA22800T1	Switch, Limit