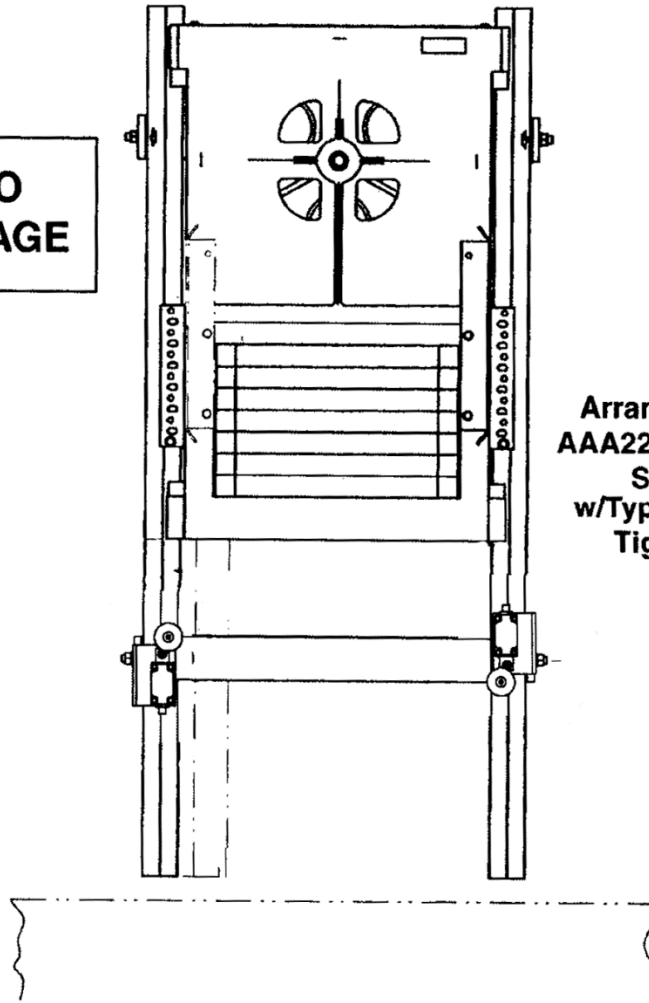


**Counterweight
Governor Rope
Tightener**

**Spare Parts Leaflet
15-AAA22700N**

June 18, 2014 / Page 1 of 3

**W/O
VINTAGE**



**Arrangements
AAA22700N3, 4, 5
Shown
w/Type 6481AD
Tightener**

OTIS

**SERVICE ENGINEERING
Otis Elevator Company
Bloomfield, Connecticut USA**

Unpublished Work—© Otis Elevator Co.; 2014

Leaflet Description

This former pointer SPL lists LRUs for type AAA22700N and AAB22700N governor rope tightener arrangements.

Leaflet Revisions

Date Revised	Subject Matter Expert	Reason for Revision
December 1, 2002	Duane Stupienski	New Pointer SPL
March 15, 2002	Duane Stupienski	This former pointer SPL now lists LRUs for type AAA22700N governor rope tightener arrangements
June 18, 2014	Gary Mendrala	Updated cover illustration; Replaced switch and bracket on p. 3

Related Drawings

Drawing No.	Title	Drawing No.	Title
AAA22700N	Arrangements CWT Governor Rope Tightener	6481AD	Assembly, Governor Rope (1/2 in.) Tightener Sheave 16 in. Diameter

Related Documents

Document ID	Title
SPL 15-6481AD	Type 6481AD Rope Tightener (16.5 in. high speed tightener)
SPL 11-AAA712P	Wire Rope, Shackles and Springs
SPL 15-TAA22700F	Samson 12 in. Tightener

Subject Matter Expert

Name	Department
Gary Mendrala	OSC Service Engineering

About Spare Parts Leaflets...

This document lists the lowest replaceable units (LRUs) for the standard version of the product. The LRUs are chosen by a team of Otis associates representing engineering and manufacturing.

While goal of this document is to make parts identification as easy as possible, the document cannot be all-inclusive. Elevator and escalator contracts classified as “special” or “custom” are not addressed here. For such contracts, please refer to specified information, the contract folder, TIPS, Field Education Articles, Construction Letters, etc. for further information.

If you have any suggestions about this document, please contact the subject matter expert listed on this page.

Slack Rope Switch (CEN)

15-AAA22700N

Arrangement CWT Tension Frame

